

HOME ECONOMICS

GUIDE



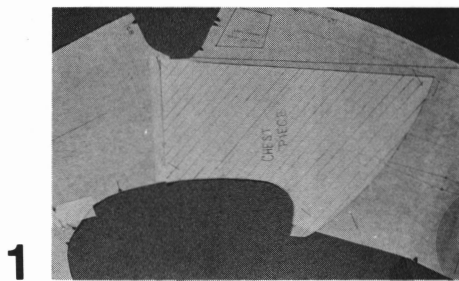
Published by the University of Missouri-Columbia
Extension Division
College of Home Economics

Floating Chest Piece (men's jackets)

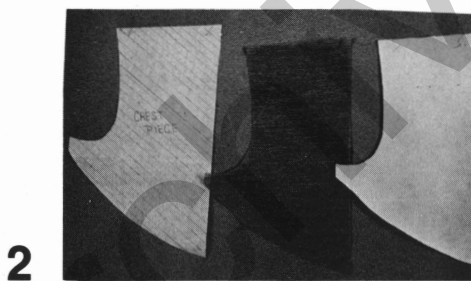
JUL 20 1982

Velda Rankin, State Clothing & Textiles Specialist
Janet Delcour, Area Clothing & Textiles Specialist
Doris Koelling, Consultant

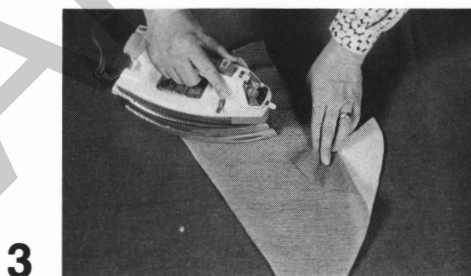
Chest pieces may be fused or floating. The top of *floating* chestpiece is attached to the jacket, after darts and pockets have been completed, and hangs free in the jacket.



Pin jacket front and side pattern. Draw the pattern by marking a line beginning $\frac{1}{4}$ inch from the lapel roll line at the neck edge to a point 5 inches in from the roll line and $1\frac{1}{2}$ " above the end of the roll line. Join the bottom lines with a curve.

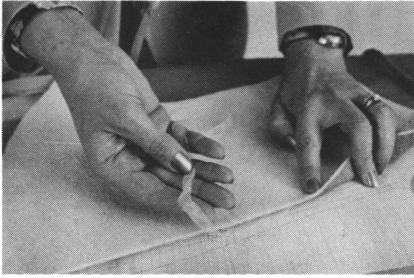


Cut the pattern from one double layer of hair canvas and a double layer of fleece.



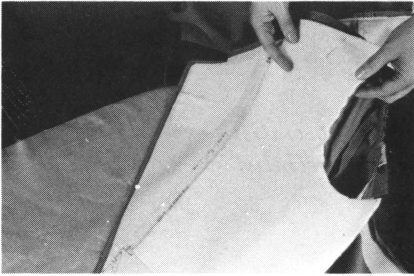
Fuse the hair canvas and fleece together. Remember to reverse layers for the right and left.

4



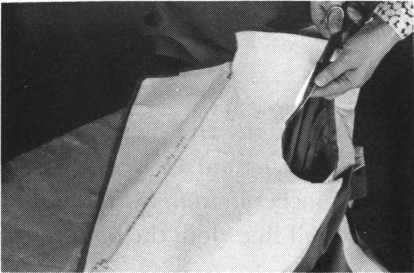
After the pockets have been completed place the chest piece on the line established in Step 1. Fuse in place along that line with a $\frac{3}{8}$ inch wide piece of fuseable web beginning the web $\frac{1}{2}$ " down from the neckline seam.

5



Pin loose edges down for ease in handling. The chest padding will be completed later.

6



Trim the chest pad even with armhole and shoulder edges.

This guide is part of a series on clothing construction.
For others in the series see Home Economics guides 410-422.

■ Issued in furtherance of Cooperative Extension Work Acts of May 8 and June 30, 1914 in cooperation with the United States Department of Agriculture. Leonard C. Douglas, Director, Cooperative Extension Service, University of Missouri and Lincoln University, Columbia, Missouri 65211. ■ An equal opportunity institution.