



9-1-2016

On the risk spillover across the oil market, financial markets, and the oil-related CDS sectors: A Volatility impulse response approach

Mehmet Balcilar

University of Pretoria, mehmet@mbalcilar.net

Shawkat Hammoudeh

Drexel University

Elif Akay Toparli

Eastern Mediterranean University, elifakaytoparli@gmail.com

Follow this and additional works at: <https://ecommons.luc.edu/meea>

Recommended Citation

Balcilar, Mehmet; Hammoudeh, Shawkat; and Akay Toparli, Elif, "On the risk spillover across the oil market, financial markets, and the oil-related CDS sectors: A Volatility impulse response approach". *Topics in Middle Eastern and North African Economies*, electronic journal, 18, 2, Middle East Economic Association and Loyola University Chicago, 2016, <http://www.luc.edu/orgs/meea/>

This Article is brought to you for free and open access by the Journals and Magazines at Loyola eCommons. It has been accepted for inclusion in Topics in Middle Eastern and North African Economies by an authorized administrator of Loyola eCommons. For more information, please contact ecommons@luc.edu.



This work is licensed under a [Creative Commons Attribution-NonCommercial-No Derivative Works 3.0 License](https://creativecommons.org/licenses/by-nc-nd/3.0/).
© 2016 The Authors

On the risk spillover across the oil market, financial markets, and the oil-related CDS sectors: A Volatility impulse response approach

Mehmet Balçılar¹, Shawkat Hammoudeh², Elif Akay Toparlı³

Abstract

In contrast to previous CDS literature, this study focuses on the magnitude of volatility transmission and the risk spillover mechanism across the oil market, financial market risks, and the oil-related Credit Default Swap (CDS) sectors. Our dataset includes futures prices of West Texas Intermediate (WTI) in addition to seven different measures of markets and credit risks. Four of the vast risk measures are the oil-related sector CDSs for auto, chemicals, natural gas, and utility sector CDSs. Two measures of the financial market risk are further included in the study, which include the one-month expected equity volatility measured by the volatility index (VIX) and the one-month bond option volatility estimate (MOVE) or swaption move expected volatility (SMOVE). The daily dataset covers the period from January 6, 2004 to February 2, 2016. The volatility transmission mechanism across the oil and financial markets and CDS sectors is examined, using the volatility impulse responses. In addition to showing the magnitude of the volatility transmission, the volatility impulse responses have the advantage of providing valuable information on the speed of risk transmission among different markets. The shape and sign of the volatility impulse responses also provide significant information on the transmission mechanism. We evaluate the risk transmission due to several recent crisis shocks. The results show complicated transmission mechanisms that spread over long periods.

Keywords: Risk; Sectoral CDS; VIX; SMOVE; MOVE; Volatility impulse response

JEL Classification: C13, C22, G1, G12, Q40

¹ Eastern Mediterranean University, Famagusta, T. R. North Cyprus, University of Pretoria, Pretoria 0002, South Africa; AND , IPAG Business School, Paris, France, e-mail: mehmet@mbalcilar.net

² Drexel University, Philadelphia, PA 19104, USA. IPAG, IPAG Business School, Paris, France

³ Department of Economics, Eastern Mediterranean University, Famagusta, T. R. North Cyprus, elifakaytoparli@gmail.com

1. Introduction

Oil can be considered as the most prominent and volatile commodity in the world economy and financial markets. Oil and oil-based products are not only used directly as raw materials by many economic sectors but also are used in many service sectors and traded on exchange markets. Because of high and growing demand (and constraints on supply), oil has become very valuable and volatile. Therefore, any fluctuations in oil prices have significant worldwide and regional effects on the world's economies. Many factors including supply-demand, global economic developments and political issues have profound effects on oil prices which are connected to other markets. The study of the transmission of risk shocks across oil and financial markets has recently gained more attention from researchers, oil industry and policymakers, particularly in the wake of recent major global crises. The Asian Financial Crisis in 1997, the Iraq War in 2003 the US subprime crisis at the end of 2007, the European sovereign debt crisis since the end of 2009 have been the catalysts for more research on volatility and the risk transmission mechanism among oil and financial markets. After Iraq War, WTI (West Texas Intermediate) future price declined to \$31.21 on February 6, 2004.

The WTI oil price of oil was \$146.12/barrel in July 2008, then nose-dived to \$39.72/barrel in the middle of February 2009, as a result of the 2008 global economic crisis. Recently, it dropped more than 70% since June 2014. It reached \$29.69⁴ in January 2016 because of the supply glut. The ten year nominal bond rates in the United States have declined from 275 basis points to 225 basis points in October 2015 to about 180 basis points in January 2016. The financial market also decline by half over the same period.

The major events that have affected the oil and financial markets have associated shocks also have a negative effect on the credit default swap (CDS) spreads which reflect the health of the economy and increases and decreases in the risk level of oil-related sectors. Due to mortgage crisis in 2007, the CDS market reached a record level of \$60 trillion up from two trillion dollars in 2002. This market in

⁴ <http://www.bloomberg.com/quote/CL1:COM>

December 2010 was 29.9 trillion and finished the 2012 with the value of 25.1 trillion according to a survey of ISDA⁵. The Energy producer-weighted CDS risk is now over 2009 levels. Defaults are rising across smaller oil and gas producers and risks are rising for larger ones as well.

The fear index, CBOE volatility index (VIX) which measures one-month expected equity volatility of the S&P 500. The expected risk in the bond market is represented by the Merrill Lynch Option Volatility Estimate (MOVE) Index and the expected risk in the swap market is measured by the Swaption Move Expected Volatility (SMOVE) index. In other words, VIX is correlated with the equity market, MOVE is with US Treasury securities market and SMOVE can be considered as a kind of VIX for US non-Treasury in swaption markets.

The daily closing future prices of WTI and seven different measures of risk are used in the analysis of this paper. Four of the vast risk measures are oil and oil-related sector CDSs, which include auto (AUTO), chemicals (CHE), natural gas (OILGAS), and utility (UTIL) sectors. Others are the one-month expected equity volatility measured by VIX, one-month MOVE and SMOVE indices. The seven variables investigated in this paper were not only used as risk measurement tools but also used to represent the volatilities in different markets and sectors.

This study has the following objectives: (1) to examine the volatility transmission mechanism across the oil, oil-related CDS sectors and financial markets, using a multivariate conditional volatility model, and (2) to discern how major global events affect the volatility of the oil, oil-related and CDS markets by employing the newly introduced volatility impulse response function analysis. To examine the risk spillover mechanism within and across the oil market, financial market, and the oil related CDS sectors; eight variables (WTI, four oil and oil-related sector CDSs, VIX, MOVE and SMOVE) were employed in the multivariate conditional volatility model, known as BEKK model, by Engle and Kroner, 1995. In addition, the Volatility Impulse Response Function (VIRF) model developed by

⁵<http://www2.isda.org/attachment/NTY4MQ==/ISDA%20YearEnd%202012%20Market%20Analysis%20FINAL.pdf>

Hafner and Herwartz (2006) is applied to our dataset to assess the magnitude of the volatility transmission. We evaluate the risk transmission on oil and oil-related market volatilities due to following events: US Mortgage Crisis; Lehman Brothers Bankruptcy on September 17, 2008; the Greece Debt Crisis on December 8, 2009; the Fear of Greece's Default on April 23, 2010; the Egyptian Political Unrest (Second Revolution) on May 27, 2011; the European Sovereign Debt Crisis on August 18, 2011; and the US Government Shutdown on September 30, 2013. The volatility impulse responses have the advantage of providing valuable information on the speed of risk transmission, and the shape and sign of the volatility impulse responses also provide significant information on the transmission mechanism. Therefore, the study of volatility transmissions within and across the oil and oil-related sectors and also determining the dynamic relationships between the oil prices, oil-related CDS sector indices, VIX, MOVE/SMOVE are valuable to oil companies, market investors, creditors of these sectors, energy regulators and Government for future decisions and actions.

The remainder of this paper is organized as follows. Section 2 presents a brief literature review. Section 3 describes the data and descriptive statistics. Section 4 presents econometric methodology of the volatility impulse response function, while Section 5 discusses the empirical results including the conclusion part and giving some remarks for the future studies.

2. Literature review

2.1. Volatility impulse response function (VIRF) method

The Error Shock Methodology named also as Impulse Response Analysis is employed to understand the effects of a shock on the behavior of time series. Most of the early papers on Impulse Response Analysis in the literature employed linear equations. The first paper about this concept was written by Sims, 1980 and improved by Doan et al., 1983. Sims, 1980 studied the analysis of shocks on volatility in linear models. Sims, 1980 identified the impulse response analysis providing dynamic effects of an error shock in the system on future economic variables. Single linear equations or Vector

Autoregressive (VAR) model were used to show the links between international equity returns. The initial studies of the international finance on spillover effect were conducted by Eun and Shim, 1989 and Becker et al., 1990. Blanchard and Quah, 1989 investigated the persistence of shocks on linear multivariate time series. Engle et al., 1990 introduced two important concepts known as “meteor showers” and “heat waves”. “Meteor showers” showed the transmission of volatility from one market to another and “heat waves” indicated the increased persistence in market volatility using linear equations. Koch and Koch, 1991 studied on the regional interdependence by using lead/lag relationships among eight financial markets. Their findings showed regional interdependence between markets growing over time and the influence of the Japanese market increases at the expense of the US market. They focused only on the return series and correlations, in other words, focused only on interdependence through the mean of the processes.

Linear time series models studied in the past were mainly using basic linear models. However, Beaudry and Koop, 1993, Potter, 1995, Pesaran and Potter, 1997 demonstrated that linear models are not adequate for studying on persistence effect of shocks on time series because of symmetry. Since, it is very difficult to distinguish differences between the effect of shocks occurring in an expansion period and a recession period in linear models. The early basic models using univariate linear equations were initially improved by models employing linear multivariate equations, offered by Pesaran et al., 1993 and Lee and Pesaran, 1993.

Further improvements were also conducted by employing models using nonlinear equations, which were able to demonstrate more complexities compared to linear models. Two different definitions of Impulse Response Analysis using nonlinear models were offered by Gallant et al., 1993 and Koop et al., 1996. Gallant et al., 1993 made use of a semi-nonparametric methodology for nonlinear system in their Impulse Response Analysis. Two concepts were defined: the “baseline” and the “shocked”. In their paper, the difference between the baseline approach and the shocked was approved as the conditional moment profile. And this shock should be either observable or estimated.

Koop et al., 1996 offered a new method. The difference between mean of the response vector conditioned on both history and present shock and the mean that only conditioned on history was found so that a new concept of generalized nonlinear impulse response functions for the conditional expectation was introduced and named as the Generalized Impulse Response Function (GIRF). Lin, 1997 contributed the idea of Gallant et al., 1993 by filling the gap in the generalized autoregressive conditional heteroscedasticity (GARCH) literature by tracing the dynamics of the conditional variance from past squared innovations for the Impulse Response Function. In the paper, the Impulse Response Function for conditional volatility in GARCH model's standard error was found. Then, first-order derivatives of the function and the covariance matrix of the estimated parameters were traced. Monte Carlo analysis was employed to find the finite sample properties of the standard errors. It was also concluded that despite the process itself being nonlinear, the conditional variance was linear. In 1990s, Hamao et al., 1990, Engle and Ng, 1993, Lin et al., 1994, Karolyi, 1995, Koutmos and Booth, 1995 and Booth et al., 1997 traced the effects of shocks over time using Impulse Response Analysis and investigated whether the volatility was transferred from one market to another. Ewing et al., 2002 studied volatility transmission in energy markets on stock indices of oil and gas companies. Serletis and Shahmoradi, 2006 examined volatility spillovers between gas and electricity prices in Canada.

Compared to earlier studies, Hafner and Herwartz, 2006 looked at the conditional variance rather than the conditional mean. According to their paper, it was considered that two news appearing in different series at the same time are independent. Owing to this assumption of news, it can be assumed as independent both over time and across the series. Whenever its distribution is not normal, the method helps to identify shocks. News is claimed as independent and identically distributed in other words, inherently independent over time. Hafner and Herwartz, 2006 created volatility impulse response function (VIRF) which is an application of Koop et al., 1996 definition to the multivariate generalized autoregressive conditional heteroscedasticity (MGARCH) models. The VIRF was used

for checking the effects of independent shocks of a market on volatility of another market and also the persistence of these spillover effects in multivariate nonlinear models.

The effects of central bank decisions on the foreign exchange market volatility were checked for the effects of independent shocks on volatility through time by ignoring orthogonality and ordering problems. In order to avoid these problems, Jordan decomposition was applied to retrieve an independent and realistic shock from the conditionally heteroskedastic error terms. Hafner and Herwartz, 2006 proved that news is inherently uncorrelated over time because of being a risk source that is independent and unpredictable which first introduced by Gallant et al., 1993. This assumption is directive in future studies. Panopoulou and Pantelidis, 2009 investigated the connection between the US and the rest of the G-7 countries and international information flow between these countries by using daily financial market return data based on VIRF analysis for 20 years. According to their findings for post-1995 period, connections between markets were changed significantly, in other words, interdependence in the volatility of the markets increased. Panopoulou and Pantelidis, 2009 argued that the VIRF method developed by Hafner and Herwartz, 2006 is well suited for the analysis on volatility spillover. First of all, it helps to show how a shock in one market could affect the other market's dynamic adjustment of volatility to another market and the persistence of these spillover effects. Another reason is that, when shocks occur, VIRF depends on both the state of actual system's volatility and the unexpected returns vector. This shows a given shock will not always increase expected conditional volatility. The asymmetric response of volatility can be negative and positive. Finally, owing to the application of Jordan decomposition, VIRF approach avoids typical orthogonalization and also ordering problems which is hardly feasible in the presence of highly interrelated and at high frequency financial time series. Diebold and Yilmaz, 2009 examined interdependence between asset returns and/or volatilities by measuring return spillovers and volatility spillovers.

From the early 1990s to the present, daily nominal local-currency financial market indices of nineteen global equity markets (seven developed financial markets and twelve emerging markets) were analyzed. According to results, a divergent behavior in the dynamics of return spillovers vs. volatility spillovers was observed. Spillover intensity was time varying and it was different for returns vs. volatilities as the nature of the time-variation. Return spillovers had no bursts but increasing trend, also increasing financial market integration for the last fifteen years. However, volatility spillovers displayed no trend but clear bursts because of the relevance of crisis. Le Pen and Sévi, 2010 quantified the effect of shocks on return volatilities in three electricity forward markets: British, Dutch and German. For the analysis of forward OTC (Over-the-Counter) electricity daily price data, they used MGARCH model and VIRF methodology. Limited numbers of papers investigated the volatility spillovers in energy markets. And most of them use the mean of the processes for transmissions than moments. Grobys, 2010 investigated the cointegration of European financial markets and studied the volatility spillover effects. A new concept was introduced, the advance of VIRF, to capture the overall impacts of volatility spillovers from one market on to another market named as Volatility Impulse Response Density Function (VIRDF). The sample data was divided into two parts: 1990-2000 and 2000-2010. Grobys, 2010 focused on the asset return series and how returns were correlated across different economies.

The financial markets' mean processes and a method determining changes concerning second-order moments over time were investigated in the model consisting of VAR and MGARCH models. Grobys, 2010 suggested that VIRDF presented a precise estimation of the overall volatility spillover effects considering within a certain time window since volatility shocks were continuous random variables. In addition, the probability of shocks was included in this study. Increasing or decreasing volatility spillover effects could be embraced as the difference of the volatility spillover effects between different time windows founded by VIRDF. Consequently, according to the findings of Grobys, 2010, there was an increasing volatility spillover impact among countries. Adams et al., 2015

created a state-dependent sensitivity value-at-risk (SDSVaR) model for quantifying risk spillover among 74 U.S. Real Estate Investment Trusts (REITs). They checked the direction of risk spillover effects from one REIT to another. For risk spillover size, estimation of the link between geographic distance and risk spillover was conducted. Therefore, these estimates were not only quantifying the size but also the direction. Their findings showed that vulnerability to risk in other REITs was significantly increased by high leverage, size, and market beta by increasing the probability of contagion during a financial crisis.

2.2. Volatility Impulse Response Function (VIRF) Method using CDS

Credit Default Swaps (CDS) index spread is a newly introduced concept; therefore, the number of studies is very limited. In addition, the limited availability of data on CDS also affects the study of economic analysis. As far as we know, there is no paper related to CDS especially studying on our selected shocks in VIRF analyses. The following studies use cross sectional data while analyzing on CDS spreads (equity and credit markets). Longstaff et al., 2005 examined the difference between corporate bond-implied CDS spreads and the actual market CDS spreads and found the former being higher than the latter. Das and Hanouna, 2006 investigated the change between cash/asset market CDS spread and credit market CDS.

CDS spread was considered as a measure of credit risk in the following papers. Bharath and Shumway, 2004 is another example on credit risk study. Ericsson et al., 2009 investigated the links between theory-based determinants of default risk and default swap spreads.

A significant portion of the variation in the data was explained by the theory-based variables. Berndt et al., 2008 examined the degree of variations in the credit risk premium of CDS spread in broadcasting and entertainment, health care, oil and gas sectors over time. According to the results, variations in the credit risk premium were significantly different. Zhang et al., 2009 studied the CDS premium, the volatility and jump risks of individual firms because of high frequency stock prices. The jump risk and volatility risk predicted 19% and 48% of the variation in CDS spread levels, respectively.

By controlling the internal and external influences, they predicted 6% more variation than before. As a result, the credit spreads could be explained by the high frequency-based volatility measures.

CDS was examined by time series as in the following studies. Byström, 2006 investigated Dow Jones iTraxx CDS indices, i.e. indices of CDS securities of the seven sectors (industrials, autos, energy, technology-media- telecommunications, consumers, senior financials and sub-ordinated financials) covering the European market. Byström, 2006 found a connection between iTraxx CDS index market and the financial market. The stock price volatility was highly correlated with CDS spreads and there was a significant positive autocorrelation in the iTraxx market. Zhu, 2006 showed the high response of CDS premium to credit conditions by using vector error correction model (VECM) and found a long-run relationship between credit risk in the corporate bond market and CDS market. Fung et al., 2008 discovered the links between stock and CDS markets in US and it was shown that the lead/lag relationships between those markets depended on the credit quality. Forte and Lovreta, 2008 found the stronger relationship at lower credit quality levels after examining the link between financial market and company level CDS. Norden and Weber, 2009 was also examined the relation between CDS, bond and financial markets.

Monthly, weekly and daily lead-lag relationships in VAR models for period from 2000 to 2002 were investigated. According to their findings, stock returns led a change in CDS and bond spread. In addition, the CDS market was found more sensitive to the financial market than the bond market and this tendency increased for lower credit quality and larger bond issues. Finally, it was shown that the CDS market contributed more to price discovery than the bond market and this was stronger for US firms than for European firms. Becker et al., 2009 evaluated two issues related to volatility index (VIX). First issue was on how historical jump activity made contribution to the price volatility. The other issue was to check whether VIX reflected any incremental information to future jump activity. Their findings showed that VIX carried information about both related to past jump contributions on total volatility and incremental information relevant to future jumps. It is an important study showing

how option markets form volatility forecasts. By using a general VECM representation with a sample of North American and European firms, Forte and Peña, 2009 studied the dynamic relationship between financial market implied credit spreads, CDS spreads, and bond spreads. The empirical results on price discovery indicated the leading role of CDS with respect to bonds. Figuerola-Ferretti and Paraskevopoulos, (2011) argued the nature of the relation between credit risk and market risk. It was claimed that there were long-term relationships in VIX and CDS markets for most companies. Figuerola-Ferretti and Paraskevopoulos, 2011 revealed the cointegration in VIX and iTraxx/CDS markets. In addition, VIX had a clear lead over the CDS market in the price discovery process. When there was a temporary mispricing from the long-run equilibrium, CDS could adjust to market risk. Luo and Zhang, 2012 extended the use of VIX to other maturities. Daily VIX term structure data from 2009 was offered by using a simple two-factor stochastic volatility framework for the VIXs. It was shown that VIX contained more information than historical volatility. According to the results, both the time series dynamics of VIXs and the rich cross-sectional shape of the term structure were captured by the framework. Luo and Zhang, 2012 made analysis on WTI, Dubai and Brent crude oil markets futures contracts and these market integrations on second moment with VAR-BEKK model. The range of the daily data was from 2005 to 2011. VIRF analysis revealed two historical shocks; the 2008 Financial Crisis and the BP Deepwater Horizon oil spill, and also quantified the size and persistence. The observations showed that Brent and Dubai crude oil markets were highly responsive to market shocks. The probability of observing a large impact of a shock was also lower while the probability of a smaller impact was opposite. Only a large shock, which was derived from small probability, was able to show an increase in expected conditional volatilities.

In contrast to the previous studies, Hammoudeh et al., 2013 focused on variable relationships at the sector level, not the firm level. Risk transmission and migration among six US measures of credit and market risk were examined. The data used in the series of analysis were from 2004 to 2011. However a sub-period of 2009 to 2011 was also used to analyze the effects of shocks in 2007–2008

Great Recession. Four oil exploration and production sectors namely the natural gas, utility, chemicals and auto sectors were investigated. According to the study, there were more long-run equilibrium risk relationships and short-run causal relationships among the four oil-related CDS spreads, the VIX index and the swaption expected volatility (SMOVE) index for the full period and the sub-period. In addition, the four oil-related CDS spreads were responsive to VIX in the short and long-run, whereas none of the indices were sensitive to SMOVE. The auto sector's CDS spread was the most error correcting in the long run and in the short run. It was pioneering in the risk discovery process. Furthermore, the 2007–2008 Great Recession showed “localization” and less migration of credit and market risk in the oil-related sectors.

Fernandes et al., 2014 examined the time series properties of the daily market VIX from the Chicago Board Options Exchange (CBOE). According to results, there was a negative relationship between the VIX and the S&P 500 index returns as well as a positive contemporaneous relationship with the volume of the S&P 500 index and VIX displayed long-range dependence. In addition, it was found that VIX tended to decline as the long-run oil price increased, reflecting the high demand from oil in recent years.

In this paper, we employ VIRF method for MGARCH model introduced by Hafner and Herwartz, 2006, which enable to examine our data for any unbiased transmission flow patterns. We focus on sector level for oil and oil related sectors as discussed in Hammoudeh et al., 2013. Focusing on the sector level is important because of the arising interest of energy regulators, policy-makers and investors in the energy and energy-related sectors. We use CDS spreads for all 4 sectors; auto (AUTO), chemicals (CHE), natural gas (OILGAS), utility (UTIL); and indices of VIX, MOVE and SMOVE as variables. Our daily dataset covers the period from the beginning of January 2004 to February 2016. We examine the risk spillover mechanism across the oil market, financial market, and the oil related sectors' CDSs. Different than Hammoudeh et al., 2013, the volatility transmission mechanism across the oil and financial markets and sector CDS is examined by using the Volatility Impulse Response

Function, having the advantage of providing valuable information on the speed of risk transmission. The shape and sign of the Volatility Impulse Response also provides significant information on the transmission mechanism of historical shocks. The effects of six specific events on residuals are researched. This study enables the migration of risk in the markets and four oil exploration and production sectors at a time of volatile oil prices.

3. DATA and DESCRIPTIVE STATISTICS

3.1. Data

Our data includes the daily closing future prices of West Texas Intermediate (WTI), Credit Default Swap (CDS) indices for four sectors (AUTO, CHE, OILGAS and UTIL), Volatility Index (VIX), one-month Merrill Lynch Option Volatility Estimate (MOVE) Index and Swaption Move Expected Volatility (SMOVE) Index. The daily dataset covers the period from 6 January 2004 to 2 February 2016 for five working days. Prices are quoted in US dollars per barrel and the data is obtained from Datastream.

CDS is a type of swap insured by the swap seller to remove the risk of non-payment on the security's premium and also interest payments at the end of the maturity date of a contract. Therefore, swap buyer makes payments to seller until the maturity date of a contract. In other words, the credit exposure of fixed income products is transferred between two parties, i.e. buyer of the swap and the seller. The risk is transferred in the way of paying CDS pre mia determined by current estimated calculations depending on the country risk. CDS spread is smaller for developed countries compared to developing ones. In our study, CDS spread represents the risk, fear, present and future economic health of four oil and oil-related sectors including auto, chemicals, natural gas, and utility sectors. The one-month expected equity volatility of the S&P 500 index measured by the VIX. Known also as uncertainty or fear index, VIX is used to understand whether there is fear or enthusiasm on the asset and gives an idea about the risk level by showing the volatility of the price of an asset. When the price

of a good increases, VIX also increases meaning that the risk becomes higher. The value of VIX greater than 30% is a sign of devolving in the course of the economy and leads to an increase in the risk perception of investors expecting the value of the S&P 500 index fluctuate in next 30 days. However, the value of 20% in VIX represents opposite that diminution in the risk perception and positive future expectations for the course of economy. MOVE index represents expected risk in the bond market and is a yield curve weighted index of the normalized implied volatility on one-month US Treasury maturities, which are weighted on the 2, 5, 10, and 30 years contracts. MOVE is 40% on the 10-year Treasury and 20% on the other Treasury options. VIX is correlated with equity; MOVE is with US Treasury options. On the other hand, expected risk in the swap market is measured by the SMOVE index. It is a kind of VIX for US non-Treasury in swaption markets and measures volatility on one to ten years US non-Treasury options depending on inflation, deflation, massive rolling of Government debts and interest rate movements. MOVE/SMOVE movements are dramatic and responses are in opposite compared to VIX.

We employ the first logarithmic differences for all eight variables in time series analysis. All daily prices converted into a daily nominal return series:

$$X = \ln\left(\frac{X_t}{X_{t-1}}\right) \quad \text{for } t=1,2,\dots,T \quad \text{Eq.1}$$

where X is the returns for all variables used in the study, X_t is the current level at time t and X_{t-1} is previous day's value.

3.2. Descriptive Statistics and Correlations

The descriptive statistics are given in Table 1 (Panel A, B and C). All variables are in first natural logarithmic differences. For full period, the number of observations is 3151 and same for all the series. The mean of all the variables are very close to zero. The standard deviation, measure of volatility, varies between 2.09-6.88%. The most volatile measure is VIX, despite the low peak-to-valley difference, i.e. the range of the data obtained from Min and Max. The lowest volatility observed for WTI. Considering the peak-to-valley difference, UTIL and SMOVE have the highest, correlating with high standard deviations. MOVE, SMOVE and VIX return series are skewed to the right, i.e. positive skewed and the data for the rest of the variables show negative skewness. The skewness values of WTI, SMOVE, MOVE and VIX are very close to zero. This means that the distributions of the data for these variables are close to normal distribution. The kurtosis values of oil and oil-related sectors are very high particularly UTIL. Therefore, it can be concluded that there are high leptokurtic distributions for oil and oil-related sectors. SMOVE index also has high value on kurtosis.

All variables were checked by Jarque and Bera, 1980 (JB) Lagrange multiplier test whether series show normal distribution or not. According to the test results, all variables rejected the null hypothesis of not having normal distribution with zero probabilities of the test, which could be also observed from the skewness and kurtosis values. Because of the finding, we employed Student's t-distribution for our analyses. The Box–Pierce Portmanteau Q statistics for lagged 1 and lagged 4 orders were also calculated. All residual series were found to be independently distributed at 5% significance level. According to statistical results presented in Table 1 Panel A, it was concluded that implementation of Student's t distribution to the series' error terms were more suitable instead of normal distribution.

All residuals were tested by the first [ARCH(1)] and the fourth [ARCH(4)] order Lagrange multiplier (LM) tests for the autoregressive conditional heteroskedasticity (ARCH). The tests rejected

the homoscedasticity hypothesis at the significance level of 1% up to 4 lagged orders except UTIL in 1 lagged order.

For full period, the sample was checked for the Pearson Correlation Coefficient (PCC). As can be seen in Table 1 Panel B, MOVE is highly interdependent with SMOVE compared to other PCCs, as observed by Hammoudeh et al., 2013. Table 1 Panel C represents the PCC estimates for the subprime mortgage crisis period. The correlation coefficient of MOVE and SMOVE is very close to 1 suggesting a high interdependency as found for the full period. However, UTIL and OILGAS have also high PCC, which is not observed for the full period. It can be concluded from Table 1 that the correlations between WTI and risk measures are low excluding the correlation between MOVE-SMOVE for both periods. Therefore, we can conclude that risk measures used in this study for the full period give information about different risks.

3.3. Dynamic Interdependencies in Returns: VAR Model

We employed a VAR model to have an idea about the return behavior for each of the four sectors' CDS indices: WTI, MOVE, SMOVE and VIX. The residuals of the VAR model were used for the following pursuits about volatility. In our model, we estimated the lags via information selection criteria. As shown in Table 2, lags are representing for each as p . Diagnostic tests are also shown in Table 2 for univariate GARCH(1,1) model. All residuals of time series were tested by ARCH-LM(1) and checked for Jarque-Bera. According to results, ARCH-LM(1) test rejected the null hypothesis because none of the tests was significant. As a result, we can conclude that there is ARCH effect in all series. Jarque-Bera tests were checked for normality assumption and was found that is violated at 1% significance level. The Box–Pierce Portmanteau Q statistics for lagged 10 and lagged 20 orders were also calculated. Only OILGAS and MOVE are independently distributed for lagged 20. In sum, according to statistical results, tests and VAR model demonstration that are more suitable to implement

Student's t distribution to the series' error terms instead of normal distribution.

3.4. Dynamic Interdependencies in Volatilities: BEKK Model

For modelling vectors of residuals, BEKK Engle and Kroner, 1995 GARCH model was used in analyses. In the VAR model, for return behavior of variables we identified error terms, ε_t as:

$$\varepsilon_t = H_t^{1/2} z_t \quad \text{Eq. 2}$$

where z_t is the 8×1 random vector: $z_t \sim (0, I_N)$. I_N is the identity matrix of order 8. H_t is 8×8 positive definite symmetric matrix and identified in the BEKK(1, 1) model as:

$$H_t = C C' + A \varepsilon_{t-1} \varepsilon_{t-1}' A' + B H_{t-1} B' \quad \text{Eq. 3}$$

where C is upper triangular matrix; A, B are all 8×8 parameter matrices in the model.

Matrix A in Eq. 3 measures the correlation between conditional variances and past squared one-lag unexpected returns. In other words, Matrix A shows the effects of the selected shocks on volatilities. On the other hand, Matrix B measures whether the current levels of the conditional variance-covariance matrix are correlated to past one-lag conditional variance-covariance matrices.

As we discussed earlier, all return series are distributed non-normal as can be seen in Table 1 and 2. Therefore, we checked the distribution of error terms, ε_t , by using Student's t distribution.

Figure 1 provides the daily levels of the CDS Premiums, oil price and volatility indices for the period 1/6/2004-2/2/2016. CDS Premium levels of AUTO and CHE have the peak values in 2009 particularly AUTO reaching the highest CDS level. They also show very similar profile over time, suggesting they are affected from the similar events and their responses are similar. On the other hand, OILGAS and UTIL are highly affected from different shocks compared to AUTO and CHE. WTI has the peak value in mid-2008. The rate of change in WTI is very high between 2007 and 2009. After the

peak value for the selected time, WTI decreases rapidly from about \$145/gallon to \$40/gallon in approximately six months. After the effects observed in mid-2008, WTI increases with a rate of change similar to the pre-shocks period until mid-2014. The volatility indices SMOVE and MOVE have very similar profiles during the chosen time period. The effects of the shocks and the responses of MOVE and SMOVE are very similar to each other. The interdependency of MOVE and SMOVE are also observed considering the Pearson Correlation Coefficient (PCC), as observed in Table 1. VIX is also affected from the similar shocks i.e. reaching the peak value in 2009, as for the other risk measures. Considering the CDS premiums, WTI and volatility indices; the effects of the different shocks can be clearly seen. However, the effects of the dominant shocks such as observed around 2009 are temporary for the selected time period except for the CDS of OILGAS so that the values of the risk measures become very similar to pre-shock period, after the shocks.

Figure 2 shows the estimated conditional correlations obtained from the BEKK-GARCH model with a Student's t-distribution. All eight variables that we use in our study show signs of volatility clustering. They all have upwards and downwards during the time depending on the different shocks. As can be observed from Figure 2, conditional correlation between MOVE and SMOVE is generally close to 1 during the chosen time period and volatility is very low compared to other conditional correlations, which can be expected owing to high interdependency between these two risk measures as observed in Table 1 and Figure 1.

Highest volatility can be seen between AUTO-CHE in 2007 and 2009 and CHE-UTIL in 2013. Therefore, it can be concluded that high volatilities of AUTO-CHE and CHE-UTIL are due to different shocks, i.e. they have low interdependency. On the other hand, lowest volatilities are observed between WTI-SMOVE/MOVE and WTI-VIX, considering the peak-to-valley differences of the conditional correlations.

General conditional correlation trend between four CDS Premiums are positive and their profiles suggest volatility between these measures. Conditional correlations between AUTO and the other CDS Premiums (CHE, OILGAS and UTIL) have high downward peak around 2009, which can be correlated with Lehman Brothers Bankruptcy shock. However, same trend between each four CDS Premiums and WTI are negative but close to zero whereas the trend between each four CDS Premiums and VIX is positive, except the steep upwards and downwards due to different responses of the risk measures against different shocks. Conditional correlations between each four CDS Premiums and MOVE/SMOVE are generally close to zero except the responses against the shocks encountered during the time period. Slight positive conditional correlation can be observed between MOVE/SMOVE and VIX having similar volatility levels.

4. METHODOLOGY of VIRF and EMPIRICAL RESULTS

4.1. Independent Shocks

In this section, we defined our model used to examine the risk spillover mechanism across the oil market, financial market, and the oil related Credit Default Swap (CDS) sectors. In addition to showing the magnitude of the volatility transmission, we described the methodology of the volatility impulse responses. This method has the advantage of providing valuable information on the speed of risk transmission. The shape and sign of the volatility impulse responses also provide significant information.

News or shocks are inherently independent over time as introduced as a new concept by Hafner and Herwartz, 2006. A shock is a risk source that is independent and unpredictable. It is also shown that two shocks appearing in different series at the same time are independent. The residuals include the effects of the shocks coming from independent sources. However, in order to obtain the pure impact of the shock, the orthogonality conditions of the error terms should be investigated. Otherwise, total effect of one shock on all the components of the residual would be observed. In order to avoid

orthogonality problem, Hafner and Herwartz, 2006 applied Jordan decomposition to retrieve an independent and realistic shock from the conditionally heteroskedastic error terms.

The component of our model that shows the effect of a shock is named as z_t in ε_t by Choleski decomposition. Independent news could be identified via Jordan decomposition of H_t . Let $\Lambda_{it} = \text{diag}(\lambda_{1t}, \dots, \lambda_{Nt})$ is the diagonal matrix whose components $\lambda_{it}, i = 1, \dots, N$ denote the eigenvalues of H_t . $\Gamma_{it} = (\gamma_{1t}, \dots, \gamma_{Nt})$ is the matrix $N \times N$ whose components $\Gamma_{it}, i = 1, \dots, N$ denote the corresponding eigenvectors. The symmetric matrix of $H_t^{1/2}$ can be decomposed as;

$$H_t^{1/2} = \Gamma_t \Lambda_t^{1/2} \Gamma_t' \quad \text{Eq. 4}$$

As Hafner and Herwartz, 2006 identified z_t as shocks from the past that were able to affect the markets in the future. Therefore, the independent shocks are defined as;

$$z_t = H_t^{-1/2} \varepsilon_t \quad \text{Eq. 5}$$

4.2. Volatility Impulse Response Function (VIRF)

According to Bollerslev et al., 1988 the BEKK (1,1) model for multivariate GARCH models can be written by using Vector Error Correction (VEC) model representation as follows:

$$\text{vech}(H_t) = \text{vech}(C) + A \text{vech}(\varepsilon_{t-1} \varepsilon_{t-1}') + B \text{vech}(H_{t-1}) \quad \text{Eq. 6}$$

in which H_t is the conditional covariance matrix at time t and $\text{vech}(H_t)$ indicates the operator that stacks the lower fraction of an 8×8 matrix into an $N^* = (N(N+1)/2)$ dimensional vector. $\text{vech}(C)$ is a vector which contains N^* coefficients, A and B are the parameter matrices containing $(N^*)^2$ parameters. This VEC model is used to eliminate the variables of the conditional covariance matrix that appear twice in the model.

According to Hafner and Herwartz, 2006, VIRF is the expectation of volatility conditional on an initial shock and history subtracted by the baseline expectation that only conditional on history, which can be written as follows;

$$V_h(z_t) = E[(vech(H_t)|\psi_{t-1}, z_t)] - E[(vech(H_t)|\psi_{t-1})] \quad \text{Eq. 7}$$

where z_t is the specific shock affecting the system at time t and ψ_{t-1} is the observed history up to time $t - 1$. $V_h(z_t)$ is the $N^* = (N(N + 1)/2)$ vector of the impact of the identical and independent shock components of z_t on the h -step ahead expected conditional variance-covariance matrix components. Therefore, to find the Eq. 7, the expectation matrix influenced by only history is subtracted from the h -step ahead expected conditional covariance matrix of a given shock and history. As a result, the model of $V_h(z_t)$ shows the reaction of the conditional variance of the eight variables respectively to the shock, z_t that occurred h period ago. One-step ahead VIRF applied to a BEKK(1,1) model is,

$$V_1(z_t) = A [vech(H_t^{1/2} z_t z_t' H_t^{1/2}) - vech(H_t)] = A D_N^+(H_t^{1/2} \otimes H_t^{1/2}) D_N vech(z_t z_t' - I_N) \quad \text{Eq. 8}$$

where D_N is the duplication matrix defined from the property as:

$$vech(Z) = D_N vech(Z) \quad \text{Eq. 9}$$

for any symmetric $N^* \times N^*$ matrix Z and D_N^+ is its Moore-Penrose inverse. I_N is the identity matrix and H_t is the conditional variance-covariance matrix representation at time t . \otimes represents the Kronecker product. For $h > 1$, the new VIRF is;

$$V_h(z_t) = (A + B)^{h-1} A D_N^+(H_t^{1/2} \otimes H_t^{1/2}) D_N vech(z_t z_t' - I_N) = (A + B) V_{h-1}(z_t) \quad \text{Eq. 10}$$

Compared to the traditional Choleski decomposition impulse response function of the conditional mean in linear models, VIRF model defined by Hafner and Herwartz, 2006 has the following important

properties:

- 1) The VIRF is an even, symmetric function of the shock with the property of $V_h(z_t) = V_h(-z_t)$. The impulse responses are odd functions in traditional linear analysis.
- 2) The VIRF is not homogenous function of any degree while the traditional linear analyses are.
- 3) The VIRF depends on the history through the volatility state H_t at the time of the initial shock occurs. However, the traditional analysis on linear systems does not depend on the historic shocks.
- 4) The persistence of shocks is calculated in moving average part same in the traditional, $(A + B)^{h-1} A$.

In our application, z_t was chosen as a shock with an independent and identically distributed random variable. The impact of a historical random shock was calculated by the observed volatility when a shock occurs. However, we are interested in the past events that have an impact on today and future. In the next part, the impact of observed historical shocks with observed volatilities will give information about past events.

4.3. Impacts of Historical Shocks on Volatilities

In the sample period, several shocks and effects were witnessed owing to our VIRF analysis. We focused on specific historical shocks: the US Mortgage Crisis: Lehman Brothers Bankruptcy, Greece Debt Crises, Fear Of Greece's Default, Egyptian Political Unrest (Second Revolution), European Sovereign Debt Crisis and US Government Shutdown that have significant effects on our variables. According to our best knowledge, the impacts of the listed six shocks within and across the oil related markets and financial market risks have not been considered in VIRF analyses in the literature. These events are explained below.

Lehman Brothers, one of the financial services firms in US, declared bankruptcy on September 15, 2008. This was the largest bankruptcy announcement in US history. The main reason for the bankruptcy can be associated with large decline of home prices after the collapse in mortgage market. The starting point of US Mortgage Crisis was accepted as the announcement of the bankruptcy of Lehman Brothers. This event influenced all the markets significantly not in the US but also worldwide. In our analysis, September 17, 2008 was accepted as the base point and we investigated the effects of this event, named also as shock, on our risk transmission and correlation analysis after this date.

Greece was accepted to the European Union on January 1, 1981. Gross Domestic Product (GDP) per capita reached the highest values in 2008, as around \$31,700 after adapting to the currency of Euro in 2001. The second shock we selected is “Greece Debt Crisis” started officially on December 8, 2009 when country’s credit rating was downgraded by Fitch from A- to BBB+. On March 4, 2010, Government announced austerity plan. In April 23, 2010 third shock in our analysis, “Fear of Greece’s Default” was assumed to be started after George Papandreou, Prime Minister of that time, called for a EU/IMF rescue package of €500bn for 3 years. This rescue package was not enough and second Greek crisis began because of Greek budget deficit was declared as higher than expected in April 2011. After that, credit rating of Greece was decreased from B to CCC. Second bailout loan was confirmed for €130bn. Therefore, interest rate increased and bond prices decreased. Banks and Greek Stock Exchanged Market closed for a month in June 2015. Unemployment rate was rising to 24.5% in November 2015. As a result, confidence in Government services was at a low point and the crisis is still continuing.

In Egypt, thousands of people protested for the step down of Husni Mubarak, the President for 30 years, and for changing the regime to democracy. Police used violence to stop protestors on the streets, resulting injuries and deaths. First revolution of Egypt named the Arab Spring was on January 25, 2011 where Muslim Brotherhood was a large part of the protests. Demonstrators filled Gharbeya, Alexandria, Suez, Ismailia and also Tahrir Square in Cairo on May 27, 2011, which was accepted as

the base point in our analysis. The demands of the crowd were for civilians not to be judged in military trials, all members of the Mubarak regime and those who killed protestors to be put on trial. And before parliament elections, demonstrators wanted the restoration of the Egyptian Constitution.

European Sovereign Debt Crisis started at the end of 2009 around European Union because of having difficulties in refinancing government debts or repayments of loans to Eurozone countries, European Central Bank (ECB) and International Monetary Fund (IMF). Increase in Government expenditures and investments, troubles in housing market therefore in banking system, small economic growth and also low productivity were main reasons for crisis especially around these Eurozone member countries; i.e. Greece, Portugal, Ireland, Spain and Cyprus. The effect of Sovereign Debt Crisis was not only on the entire Eurozone but also on European Union countries and worldwide.

The two chambers of US Congress could not be agree on the offer of increasing the Federal Government's debt ceiling or called extra fund to finance Patient Protection and Affordable Care Act known as Obamacare signed in 2010. As a result, US Government was shutdown on 1st of October until October 16, 2013. Non-compulsory expenditures were stopped and government postponed payments. Approximately 800,000 federal employees were forced for an unpaid leave. This event influenced financial agents and markets negatively, as can be expected. The base shock date chosen for our analyses was a day ago from the beginning of shutdown.

Figure 3 reports the responses to the above listed shocks as Impulse Response to covariances of eight variables used in this study. Nonzero positive impulse responses imply risk transmission. We note that some of the shocks might be negative at the date shock and the impulse response might negative. However, negative impulse responses still imply risk transmission. This is due the fact that the shocks are not normalized in terms of sign and the size. As can be seen, significant but various types of responses can be observed for all the covariances due to Lehman Brothers Bankruptcy. This

event or shock has the highest influence on the reported covariances compared to other five events. Since all the variables used in this study are US-based, higher influence of Lehman Brothers Bankruptcy to response of covariances can be expected.

Our findings show that covariances of VIX-AUTO, CHE-OILGAS, UTIL-OILGAS, WTI-CHE, SMOVE-UTIL and MOVE-SMOVE have negative responses to Lehman Brothers Bankruptcy shock and negative responses tend to be higher in the long run. Covariances of WTI-AUTO, SMOVE-AUTO and UTIL-CHE shift their response from positive to negative whereas the change of covariance of WTI-OILGAS is vice-versa. The change in response occurs after a very short time from Lehman Brothers Bankruptcy. The rest of the covariances show positive response to this shock, however, their profiles are different. In addition, right after the shock, the covariances have slight positive response, which tend to become zero in the short run and have increase in the long run except CHE-AUTO, UTIL-AUTO, VIX-UTIL, SMOVE-WTI, MOVE-WTI and VIX-WTI.

After Lehman Brothers Bankruptcy, the second highest influential shock is the Greece Debt Crisis. Substantial positive responses of covariances of OILGAS-AUTO, CHE-AUTO, WTI-AUTO, MOVE-AUTO, VIX-UTIL and MOVE-WTI as well as slight negative response of covariance UTIL-OILGAS can be observed right after the shock. However, all the responses diminish in the long run.

The other shocks namely Fear of Greece's Default, European Sovereign Debt Crisis and US Government Shutdown have very similar effect on the covariances. They have slight effect on covariances in the short-run, which tends to become zero in the medium term. However, the responses of the covariances of the risk measures slightly increase as time passes. Another remarkable feature is that covariances tend to show higher response to Fear of Greece's Default compared to European Sovereign Debt Crisis and US Government Shutdown in the long term. In this respect, the lowest response is to US Government Shutdown.

Covariances of the all the risk measures are almost insensitive to Egyptian Political Unrest.

Furthermore, the covariance of WTI-UTIL has no significant response to all reported shocks since utilities are a local monopoly that are regulated by policymakers. Moreover, utilities do not use oil as a fuel.

5. Conclusion

The study examines the volatility transmission mechanism across the oil and financial markets and sector CDSs, using eight different measures of risks during the period January 6, 2004 –February 2, 2016. In addition to assessing the magnitude of the volatility transmission, the volatility impulse responses have the advantage of providing valuable information on the speed of risk transmission. The shape and sign of the volatility impulse responses also provide significant information on the transmission mechanism. We also evaluate the risk transmission due to global shocks related to the US Mortgage Crisis, Lehman Brothers Bankruptcy, Greece Debt Crisis, Fear of Greece's Default, Egyptian Political Unrest (Second Revolution), European Sovereign Debt Crisis and US Government Shutdown and observe that most of these events lead to significant risk transmission. Among these events, the Lehman Brothers Bankruptcy has destabilizing effects on all the oil-related sectors. We also find that all oil market related shocks have significant risk transmission effects. Finally, the results show complicated transmission mechanisms that spread over long periods.

References

- Adams Z, Füss R, Schindler F. The Sources of Risk Spillovers among U.S. REITs: Financial Characteristics and Regional Proximity. *Real Estate Economics* 2015;43; 67-100.
- Beaudry P, Koop G. Do recessions permanently change output? *Journal of Monetary Economics* 1993;31; 149-163.
- Becker KG, Finnerty JE, Gupta M. The Intertemporal Relation Between the U. S. and Japanese Stock Markets. *The Journal of Finance* 1990;45; 1297-1306.
- Becker R, Clements AE, McClelland A. The jump component of S&P 500 volatility and the VIX index. *Journal of Banking & Finance* 2009;33; 1033-1038.
- Berndt A, Douglas R, Duffie D, Ferguson M, Schranz D. Measuring Default Risk Premia from Default Swap Rates and EDFs. BIS Working Paper No. 173; EFA 2004 Maastricht Meetings Paper No. 5121. . Available at SSRN: <http://ssrn.com/abstract=556080> 2008.
- Bharath ST, Shumway T. Forecasting Default with the KMV-Merton Model. Available at SSRN: <http://ssrn.com/abstract=637342> 2004.
- Blanchard OJ, Quah D. The Dynamic Effects of Aggregate Demand and Supply Disturbances. *The American Economic Review* 1989;79; 655-673.
- Bollerslev T, Engle R, Wooldridge J. A Capital Asset Pricing Model with Time-Varying Covariances. *Journal of Political Economy* 1988;96; 116-131.
- Booth GG, Chowdhury M, Martikainen T, Tse Y. Intraday Volatility in International Stock Index Futures Markets: Meteor Showers or Heat Waves? *Management Science* 1997;43; 1564-1576.
- Byström H. Credit Default Swaps and Equity Prices: The iTraxx CDS Index Market. *Financial Analysts Journal* 2006;62; 65-76.
- Das SR, Hanouna P. Credit default swap spreads. *Journal of Investment Management* 2006;4; 93-105.
- Diebold FX, Yilmaz K. Measuring Financial Asset Return and Volatility Spillovers, with Application to Global Equity Markets*. *The Economic Journal* 2009;119; 158-171.
- Doan T, Litterman RB, Sims CA. Forecasting and Conditional Projection Using Realistic Prior Distributions. National Bureau of Economic Research Working Paper Series 1983;No. 1202.
- Engle RF, Ito T, Lin W-L. Meteor Showers or Heat Waves? Heteroskedastic Intra-Daily Volatility in the Foreign Exchange Market. *Econometrica* 1990;58; 525-542.
- Engle RF, Kroner KF. Multivariate Simultaneous Generalized Arch. *Econometric Theory* 1995;11; 122-150.

- Engle RF, Ng VK. Measuring and Testing the Impact of News on Volatility. *The Journal of Finance* 1993;48; 1749-1778.
- Ericsson J, Jacobs K, Oviedo R. The Determinants of Credit Default Swap Premia. *Journal of Financial and Quantitative Analysis* 2009;44; 109-132.
- Eun CS, Shim S. International Transmission of Stock Market Movements. *The Journal of Financial and Quantitative Analysis* 1989;24; 241-256.
- Ewing BT, Malik F, Ozfidan O. Volatility transmission in the oil and natural gas markets. *Energy Economics* 2002;24; 525-538.
- Fernandes M, Medeiros MC, Scharth M. Modeling and predicting the CBOE market volatility index. *Journal of Banking & Finance* 2014;40; 1-10.
- Figuerola-Ferretti I, Paraskevopoulos I, 2011. Pairing market risk with credit risk. Universidad Carlos III, Departamento de Economía de la Empresa.
- Forte S, Lovreta L. Credit Risk Discovery in the Stock and CDS Markets: Who Leads, When, and Why. Available at SSRN: <http://ssrn.com/abstract=1183202> 2008.
- Forte S, Peña JI. Credit spreads: An empirical analysis on the informational content of stocks, bonds, and CDS. *Journal of Banking & Finance* 2009;33; 2013-2025.
- Fung H-G, Sierra GE, Yau J, Zhang G. Are the U.S. Stock Market and Credit Default Swap Market Related? Evidence from the CDX Indices. *Journal of Alternative Investments* 2008;11; 43-61.
- Gallant A, Rossi P, Tauchen G. Nonlinear Dynamic Structures. *Econometrica* 1993;61; 871-907.
- Grobys K. Have volatility spillover effects of cointegrated European stock markets increased over time? . *The Review of Finance and Banking* 2010;02; 83-94.
- Hafner CM, Herwartz H. Volatility impulse responses for multivariate GARCH models: An exchange rate illustration. *Journal of International Money and Finance* 2006;25; 719-740.
- Hamao Y, Masulis RW, Ng V. Correlations in Price Changes and Volatility across International Stock markets. *Review of Financial Studies* 1990;3; 281-307.
- Hammoudeh S, Liu T, Chang C-L, McAleer M. Risk spillovers in oil-related CDS, stock and credit markets. *Energy Economics* 2013;36; 526-535.
- Jarque CM, Bera AK. Efficient tests for normality, homoscedasticity and serial independence of regression residuals. *Economics Letters* 1980;6; 255-259.
- Karolyi GA. A Multivariate GARCH Model of International Transmissions of Stock Returns and Volatility: The Case of the United States and Canada. *Journal of Business & Economic Statistics* 1995;13; 11-25.
- Koch PD, Koch TW. Evolution in dynamic linkages across daily national stock indexes. *Journal of International Money and Finance* 1991;10; 231-251.

- Koop G, Pesaran MH, Potter SM. Impulse response analysis in nonlinear multivariate models. *Journal of Econometrics* 1996;74; 119-147.
- Koutmos G, Booth GG. Asymmetric volatility transmission in international stock markets. *Journal of International Money and Finance* 1995;14; 747-762.
- Le Pen Y, Sévi B. Volatility transmission and volatility impulse response functions in European electricity forward markets. *Energy Economics* 2010;32; 758-770.
- Lee KC, Pesaran MH. Persistence profiles and business cycle fluctuations in a disaggregated model of U.K. output growth. *Ricerche Economiche* 1993;47; 293-322.
- Lin W-L. Impulse Response Function for Conditional Volatility in GARCH Models. *Journal of Business & Economic Statistics* 1997;15; 15-25.
- Lin W-L, Engle RF, Ito T. Do Bulls and Bears Move Across Borders? International Transmission of Stock Returns and Volatility. *Review of Financial Studies* 1994;7; 507-538.
- Longstaff FA, Mithal S, Neis E. Corporate Yield Spreads: Default Risk or Liquidity? New Evidence from the Credit Default Swap Market. *The Journal of Finance* 2005;60; 2213-2253.
- Luo X, Zhang JE. The Term Structure of VIX. *Journal of Futures Markets* 2012;32; 1092-1123.
- Norden L, Weber M. The Co-movement of Credit Default Swap, Bond and Stock markets: an Empirical Analysis. *European Financial Management* 2009;15; 529-562.
- Panopoulou E, Pantelidis T. Integration at a cost: evidence from volatility impulse response functions. *Applied Financial Economics* 2009;19; 917-933.
- Pesaran MH, Pierse RG, Lee KC. Persistence, cointegration, and aggregation. *Journal of Econometrics* 1993;56; 57-88.
- Pesaran MH, Potter SM. A floor and ceiling model of US output. *Journal of Economic Dynamics and Control* 1997;21; 661-695.
- Potter SM. A nonlinear approach to US GNP. *Journal of Applied Econometrics* 1995;10; 109-125.
- Serletis A, Shahmoradi A. Measuring and Testing Natural Gas and Electricity Markets Volatility: Evidence from Alberta's Deregulated Markets. *Studies in Nonlinear Dynamics & Econometrics* 2006;10; 1-20.
- Sims CA. Macroeconomics and Reality. *Econometrica* 1980;48; 1-48.
- Zhang BY, Zhou H, Zhu H. Explaining Credit Default Swap Spreads with the Equity Volatility and Jump Risks of Individual Firms. *Review of Financial Studies* 2009;22; 5099-5131.
- Zhu H. An Empirical Comparison of Credit Spreads between the Bond Market and the Credit Default Swap Market. *Journal of Financial Services Research* 2006;29; 211-235.

Table 1. Descriptive Statistics and Correlations

	Mean	S.D.	Min	Max	Skewness	Kurtosis	JB	Q(1)	Q(4)	ARCH(1)	ARCH(4)
<i>Panel A: Descriptive statistics for log returns (%)</i>											
AUTO	0.01%	4.67%	-141.40%	46.41%	-8.74%	281.68%	10470537.58***	102.62***	131.94***	8.11***	24.64***
OILGAS	0.07%	3.53%	-96.78%	40.23%	-6.40%	210.65%	5854834.47***	29.89***	49.31***	7.84***	10.78*
CHE	0.01%	4.44%	-126.93%	86.65%	-5.18%	283.69%	10593977.62***	13.03***	42.56***	18.15***	25.44***
UTIL	0.02%	5.46%	-241.70%	20.65%	-29.36%	1244.67%	204108753.82***	12.45***	246.59***	0.00	70.16***
WTI	0.00%	2.09%	-10.58%	12.12%	-0.13%	3.09%	1264.83***	11.44***	21.05***	96.75***	415.34***
SMOVE	-0.02%	5.16%	-139.32%	137.89%	0.02%	329.09%	14237272.92***	125.83***	139.69***	776.51***	1279.86***
MOVE	-0.01%	4.02%	-22.21%	30.59%	0.55%	4.97%	3400.14***	6.24**	45.95***	24.76***	73.24***
VIX	0.01%	6.88%	-35.06%	49.60%	0.70%	4.03%	2395.49***	27.79***	47.04***	134.78***	218.72***
<i>Panel B: Pearson correlation coefficient estimates for the full sample</i>											
	AUTO	OILGAS	CHE	UTIL	WTI	SMOVE	MOVE	VIX			
AUTO	1.000										
OILGAS	0.266	1.000									
CHE	0.179	0.201	1.000								
UTIL	0.141	0.151	0.115	1.000							
WTI	-0.146	-0.176	-0.065	-0.069	1.000						
SMOVE	0.053	0.072	0.056	0.042	-0.046	1.000					
MOVE	0.069	0.079	0.076	0.054	-0.056	0.646	1.000				
VIX	0.259	0.213	0.143	0.108	-0.234	0.163	0.188	1.000			
<i>Panel C: Pearson correlation coefficient estimates for the subprime mortgage crises period (Dec 2007-Jun 2009)</i>											
	AUTO	OILGAS	CHE	UTIL	WTI	SMOVE	MOVE	VIX			
AUTO	1.000										
OILGAS	0.339	1.000									
CHE	0.069	0.202	1.000								
UTIL	0.337	0.831	0.222	1.000							
WTI	-0.145	-0.226	0.004	-0.240	1.000						
SMOVE	-0.062	0.140	0.044	0.132	-0.099	1.000					
MOVE	-0.060	0.139	0.054	0.135	-0.061	0.952	1.000				
VIX	0.103	0.235	0.044	0.214	-0.320	0.210	0.183	1.000			

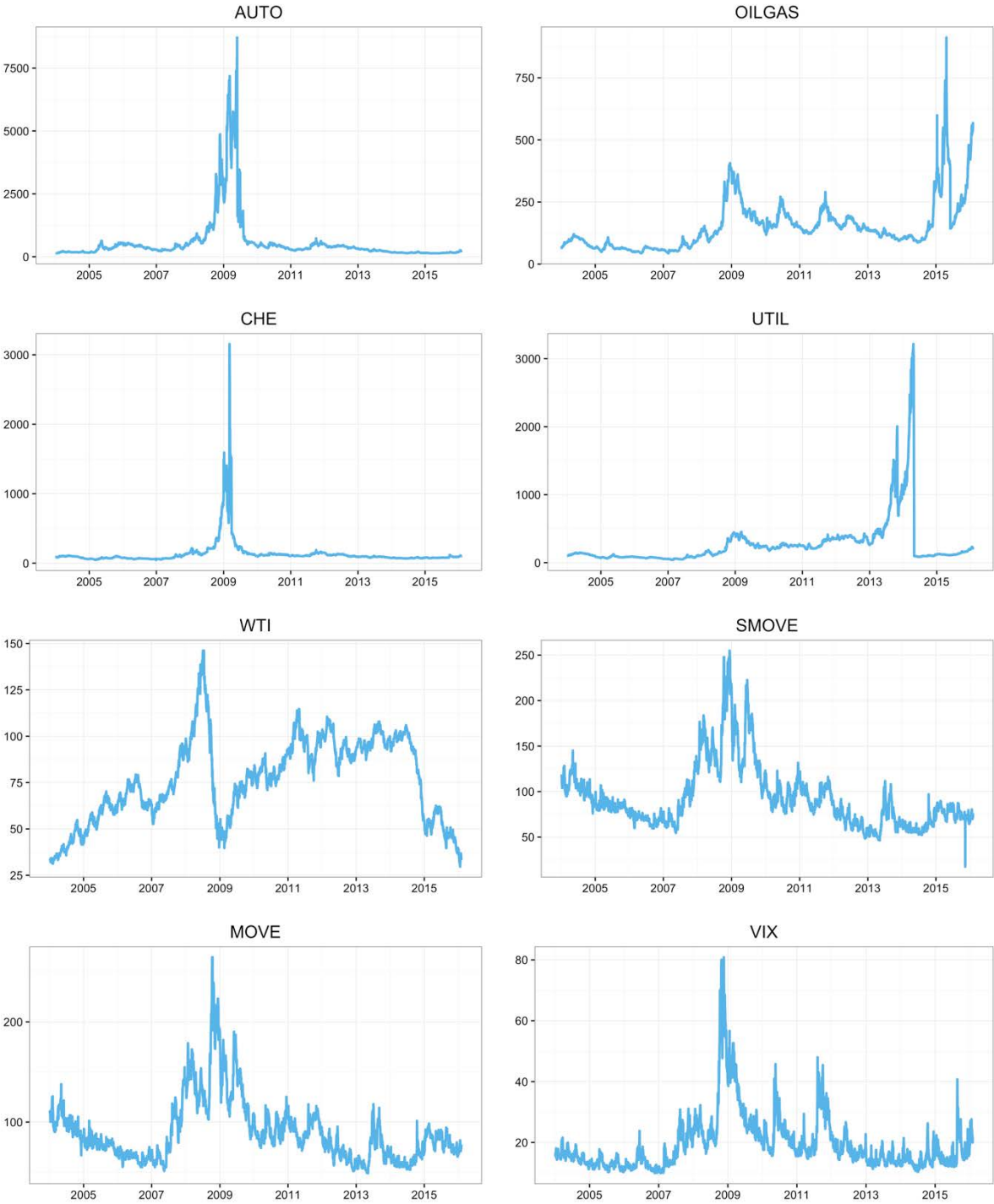
Note: Panel A provides the descriptive statistics for log returns. The sample period covers 1/6/2004-2/2/2016 with $n=3151$ daily observations. AUTO stands for the five-year US auto sector CDS premium; OILGAS stands for the five-year US auto oil and gas sector CDS premium; CHE stands for the five-year US chemicals sector CDS premium; UTIL stands for the five-year US utilities sector CDS premium; WTI stands for the daily closing price for the West Texas Intermediate (WTI) crude oil futures contract 3 (dollars per gallon) delivered in Cushing, Oklahoma; SMOVE stands for one-month bond volatility index; MOVE one-month volatility index for swaption; and VIX stands for the CBOE SPX volatility. In addition to the mean, the standard deviation (S.D.), minimum (min), maximum (max), skewness, and kurtosis statistics, the table reports the Jarque-Bera normality test (JB), the Ljung-Box first [$Q(1)$] and the fourth [$Q(4)$] autocorrelation tests, and the first [ARCH(1)] and the fourth [ARCH(4)] order Lagrange multiplier (LM) tests for the autoregressive conditional heteroskedasticity (ARCH). Panels B and C provide the Pearson correlation coefficient (PCC) estimates for the full sample and for the subprime mortgage crises period of Dec. 2007-Jun 2009, respectively. The asterisks ***, ** and * represent significance at the 1%, 5%, and 10% levels, respectively.

Table 2. Univariate AR(p)-GARCH(1,1) fit diagnostics

	ARCH-LM(1)	JB	$Q(10)$	$Q(20)$	p
AUTO	1.722 (0.189)	1776.673*** (< 0.001)	8.736 (0.462)	22.428 (0.263)	4
OILGAS	0.030 (0.862)	4187.452*** (< 0.001)	11.985 (0.214)	27.363* (0.096)	4
CHE	0.102 (0.750)	92736.463*** (< 0.001)	12.633 (0.180)	24.504 (0.178)	1
UTIL	0.025 (0.873)	7645.312*** (< 0.001)	12.066 (0.210)	23.184 (0.229)	4
WTI	2.946 (0.086)	355.697*** (< 0.001)	4.005 (0.911)	8.843 (0.976)	4
SMOVE	0.084 (0.772)	3715.044*** (< 0.001)	8.182 (0.516)	22.492 (0.260)	5
MOVE	0.766 (0.381)	2388.067*** (< 0.001)	5.747 (0.765)	29.374* (0.060)	8
VIX	0.030 (0.864)	3794.099*** (< 0.001)	9.842 (0.363)	25.624 (0.141)	7

Note: The table reports diagnostic tests for univariate autoregressive GARCH model fits. An AR(p)-GARCH(1,1) model is fitted to each series. The AR order p is selected by the Akaike Information Criterion (AIC). Table reports the Jarque-Bera normality test (JB), the Ljung-Box tenth [$Q(10)$] and the twentieth [$Q(20)$] autocorrelation tests, and the first [ARCH(1)] order Lagrange multiplier (LM) tests for the autoregressive conditional heteroscedasticity (ARCH). The p -values of the tests are given in parentheses. The asterisks ***, ** and * represent significance at the 1%, 5%, and 10% levels, respectively. The symbol “ $<$ ” signifies “less than” the number it precedes.

Figure 1. Time-series plots of level of the CDS premium, oil price, and volatility indices



Note: This figure provides the plots of the daily levels of the indices for the period 1/6/2004-2/2/2016. AUTO stands for the five-year US auto sector CDS premium; OILGAS stands for the five-year US auto oil and gas sector CDS premium; CHE stands for the five-year US chemicals sector CDS premium; UTIL stands for the five-year US utilities sector CDS premium; WTI stands for the daily closing price for the West Texas Intermediate (WTI) crude oil futures contract 3 (dollars per gallon) delivered in Cushing, Oklahoma; SMOVE stands for one-month bond volatility index; MOVE one-month volatility index for swaption; and VIX stands for the CBOE SPX volatility.

Figure 2. Conditional correlations from the BEKK-GARCH model

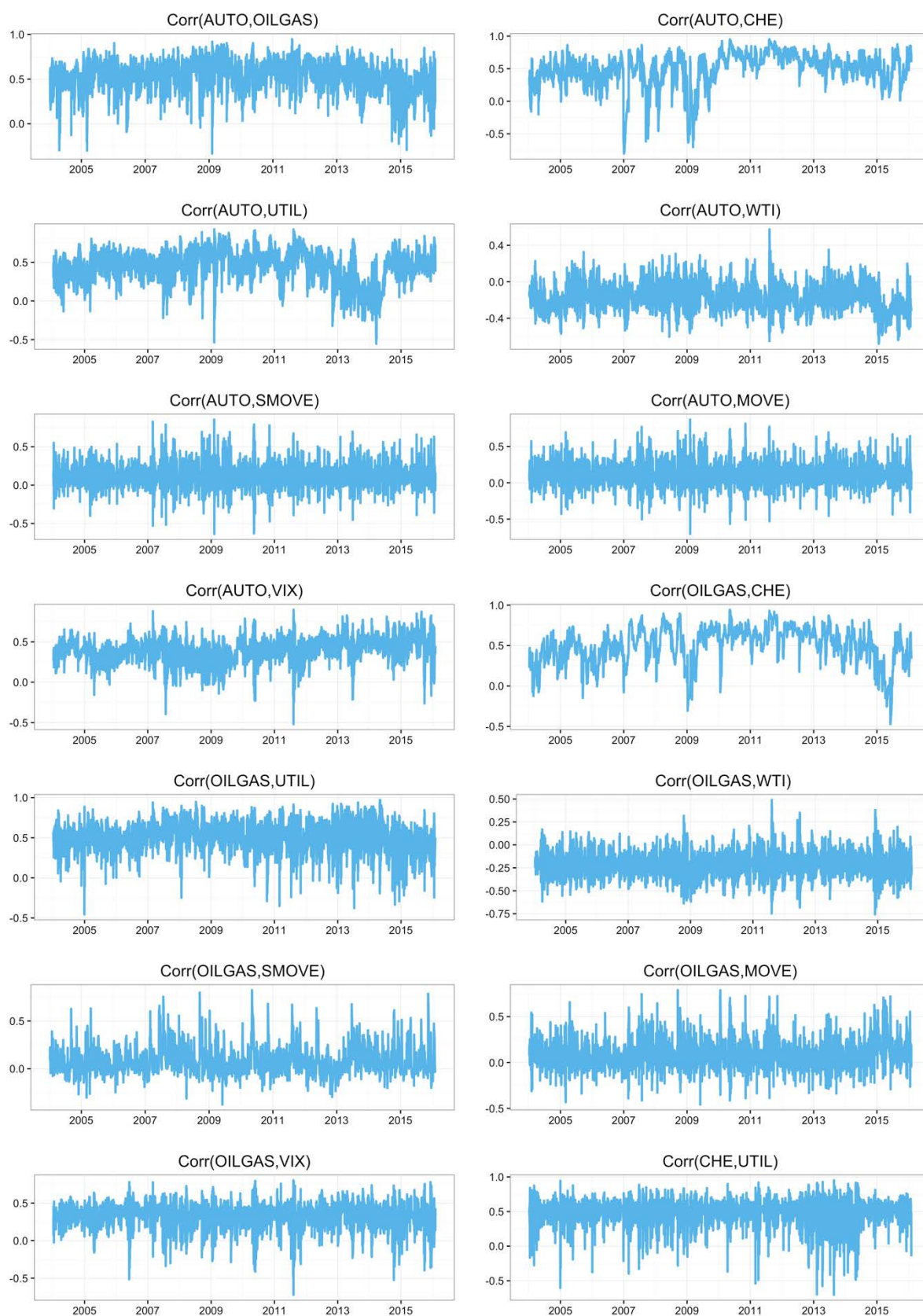


Figure 2. (continued)

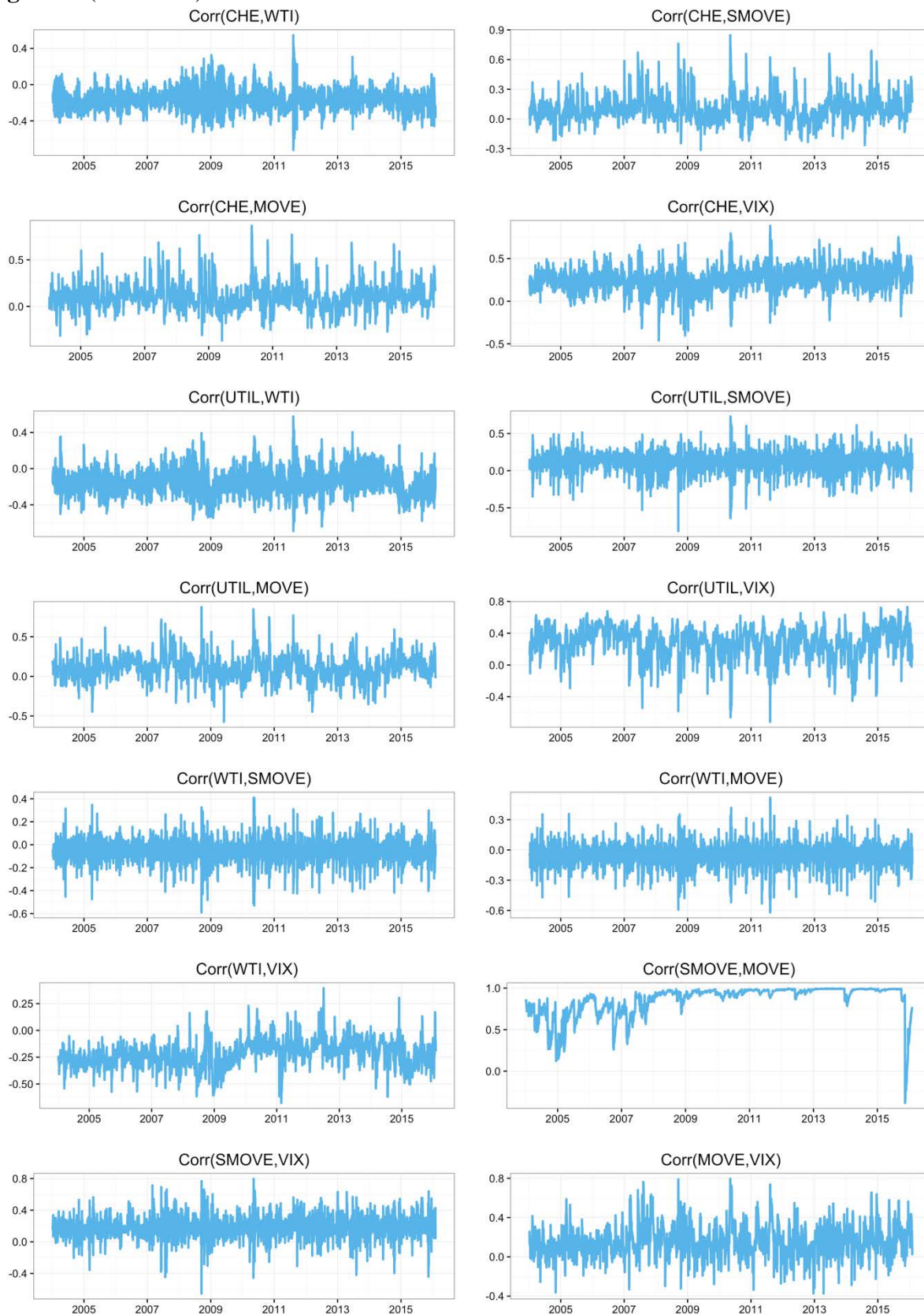
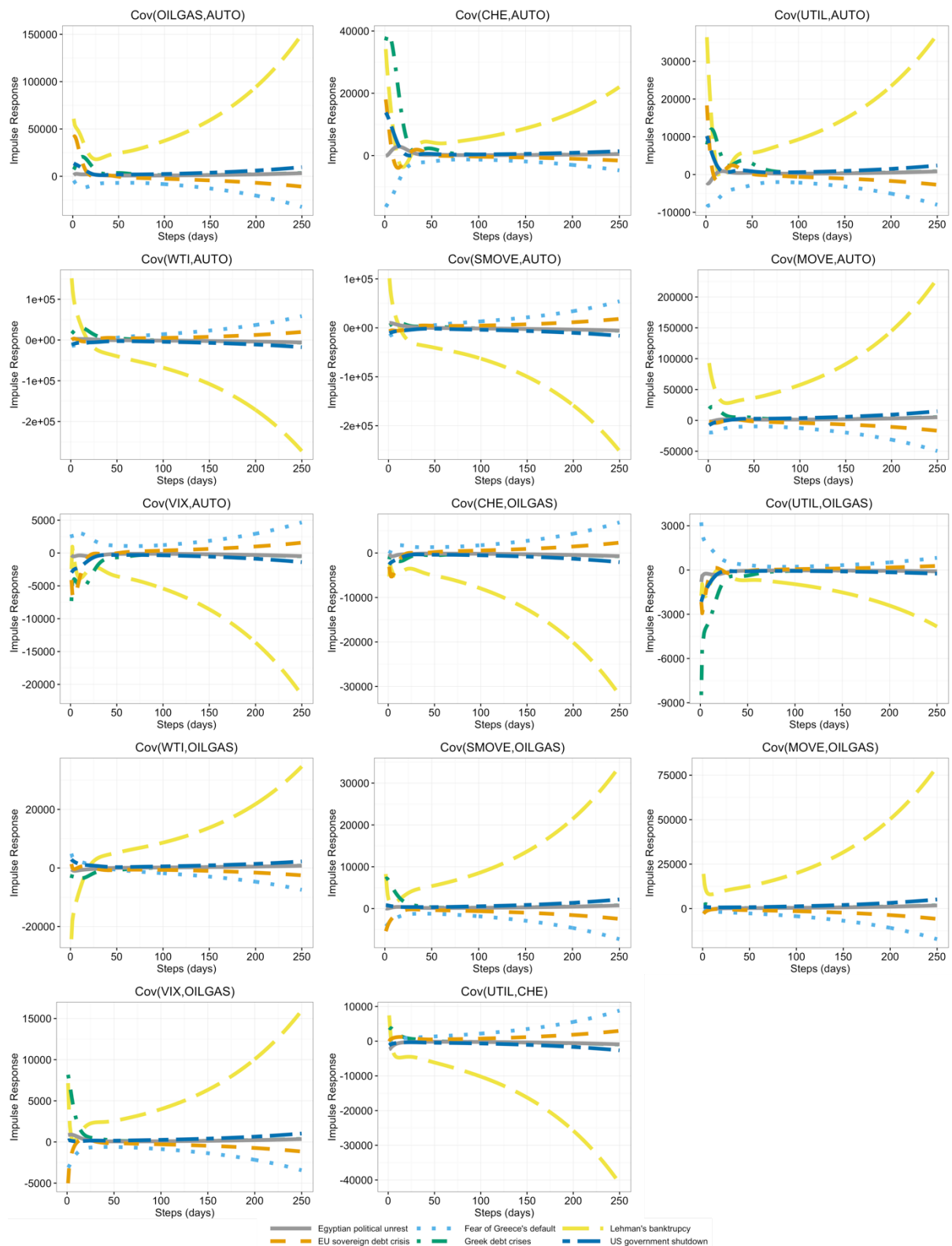
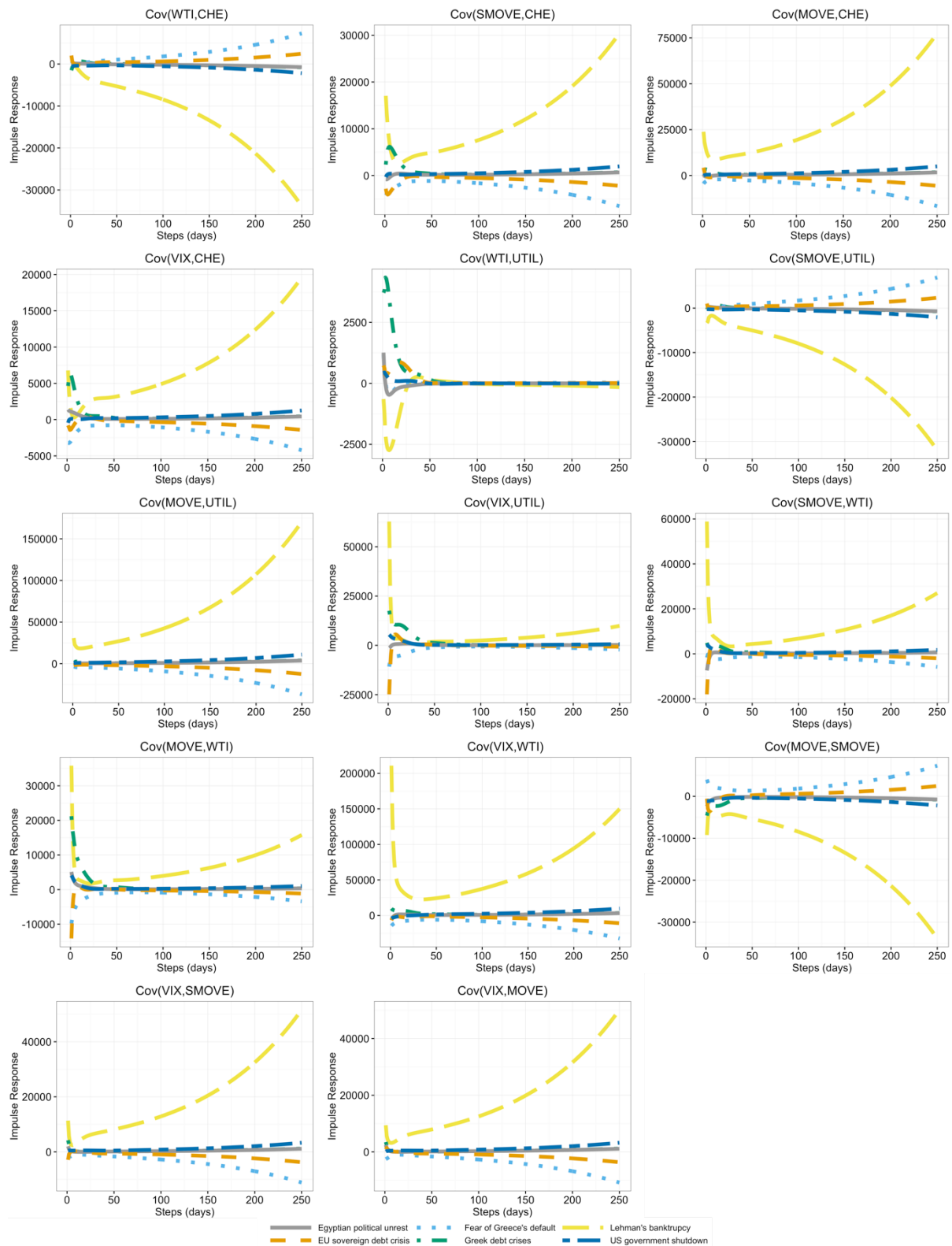


Figure 3. Responses of covariances to various shocks



Note: The figure reports the response of the covariances to the shock due to following events: Lehman Brothers bankruptcy on Sep 17, 2008; Greece debt crises on Dec 8, 2009; Fear of Greece's default on April 23, 2010; Egyptian political unrest (Second Revolution) on May 27, 2011; European sovereign debt crisis on August 18, 2011; and US government shutdown on Sept 30, 2013.

Figure 3. (continued)



Note: The figure reports the response of the covariances to shocks due to following events: Lehman Brothers bankruptcy on Sep 17, 2008; Greece debt crises on Dec 8, 2009; Fear of Greece's default on April 23, 2010; Egyptian political unrest (Second Revolution) on May 27, 2011; European sovereign debt crisis on August 18, 2011; and US government shutdown on Sept 30, 2013.