

1 **Impact of mechanical and microstructural properties of potato puree-food additive complexes on extrusion-**  
2 **based 3D printing**

3 Iman Dankar<sup>#&</sup>, Montserrat Pujolà<sup>&</sup>, Fawaz EL Omar<sup>#</sup>, Francesc Sepulcre<sup>&</sup>, Amira Haddarah<sup>#</sup>

4 <sup>#</sup>Lebanese University, Doctoral School of Science and Technology, EDST, Hadath, Lebanon

5 <sup>&</sup> Departament d'Enginyeria Agroalimentària i Biotecnologia, Universitat Politècnica de Catalunya.

6 BarcelonaTECH

7

8 **Abstract**

9 This paper studies the applicability of extrusion-based 3D printing for constructing novel shapes from potato puree  
10 and the effects of four additives (agar, alginate, lecithin and glycerol) added separately at three concentrations (0.5,  
11 1, 1.5%) on the internal strength, mechanical properties, microstructure and color of potato puree. The printability of  
12 the potato puree and the mixtures was assayed by examining the consistency of the extrusions and the stability and  
13 accuracy of the printed patterns. The results indicate that better printing was achieved at a nozzle height of 0.5 cm  
14 and a nozzle diameter of 4 mm, with concentrations of alginate and agar between 0.5-1.5% and 0.5-1%,  
15 respectively, providing the best printability and end-product stability, which was attributed to their respective high  
16 mechanical characteristics and specific mechanical energy (SME) values. Scanning electron microscopy (SEM)  
17 revealed that more convolutions were induced in the potato puree upon the addition of agar or alginate, which  
18 increased the puree stability. Three-dimensional printing did not significantly affect the surface color parameters of  
19 the final product. This study showed that the 3D printing process is a critical factor for initializing the production of  
20 customized healthy products.

21 **Keywords:** Texture, Scanning Electron Microscopy (SEM), Color, Specific Mechanical Energy (SME), 3D printing

22 Corresponding author: Dr. Montserrat Pujolà

23 E-mail: [montserrat.pujola@upc.edu](mailto:montserrat.pujola@upc.edu)

24 Postal address:

25

26 **Introduction**

27 There is a growing demand for the development of customized food for specialized dietary needs, such as  
28 products for athletes for recovery after training or products for expectant mothers that vary nutrient component  
29 levels by reducing amounts of undesirable ingredients and enhancing the presence of healthy ones (e.g., protein,  
30 vitamins, fiber). Moreover, elderly people who are facing physiological changes that occur with aging such as  
31 dysphagia and decreased sensory perception require special nutritive meals. Nevertheless, pureed food is  
32 delivered to them in an unappealing and unappetizing way. Children are another group of people who require  
33 special dietary intake. Children are more willing to consume healthy and nutritious snacks if they are presented  
34 in an innovative and fun way (Dankar, Haddarah, Omar, Sepulcre, & Pujolà, 2018). However, the development  
35 of such customized foods must be conducted in a very precise and inventive way, which is where the role of 3D  
36 printing appears.

37 Three-dimensional food printing is an innovative technique that is of great potential interest and is continuously  
38 under debate for both consumers and food scientists due to its broad array of uses (Severini, Derossi, Ricci,  
39 Caporizzi, & Fiore, 2018). The application of 3D food printing could be summarized as the ability to provide  
40 customized food to certain groups of people (de Roos, 2013) and to automatically generate a specific code to  
41 adjust composition, density or structure to the preferences and needs of the user. Moreover, 3D printing has  
42 demonstrated some interesting applications for industry by enhancing efficiency through the consolidation of  
43 multiple steps or even entire food production processes (Bak, 2003; Sun et al., 2015). For instance, the PepsiCo  
44 company decided to incorporate 3D printing in the manufacturing of its potato chips to save money and create  
45 healthier food after suffering serious problems in the sales of sugary drinks and fatty snacks (Simon, 2015).

46 Extrusion printing through a syringe nozzle is the most popular technique employed because of its ability to  
47 process the widest array of foods, such as printing with mashed potatoes (Southerland, Walters, & Huson,  
48 2011), chocolates (Hao et al., 2010), cookie dough (Lipton et al., 2010), soft cheeses (Le Tohic et al., 2018),  
49 hydrogels and fibers (Lille, Nurmela, Nordlund, Metsä-Kortelainen, & Sozer, 2017; Wang, Zhang, Bhandari, &

50 Yang, 2018) and blends of fruits and vegetables (Severini et al., 2017), and if coupled with more than one  
51 syringe, this technique can provide an infinite number of combinations of and a high degree of freedom for  
52 foods.

53 On the other hand, important factors should be taken into consideration when extrusion printing. Maintaining  
54 compatibility between specific printing parameters and the corresponding printed substance is crucial to ensure  
55 high feasibility for 3D printing. The essential process parameters that can be modulated are the printing speed,  
56 the distance between the nozzle and the printing bed and the nozzle size; these are critical criteria that influence  
57 the final resolution of the constructed shape (Hao et al., 2010; Zhuo, 2015; Derossi, Caporizzi, Azzollini, &  
58 Severini, 2018). Additionally, monitoring the properties and composition of the food material itself (ingredient  
59 rheology, electrical conductivity, density, textural quality, and physiochemical and microstructural properties) is  
60 imperative and aids in predicting the behavior of a particular food during 3D printing and in assembling a  
61 complex shape with many layers that is stable enough to maintain its profile for a long time post-deposition (  
62 Dankar et al., 2018; Godoi, Prakash, & Bhandari, 2016; Periard, Schaal, Schaal, Malone, & Lipson, 2007;  
63 Yang, Zhang, Bhandari, & Liu, 2018).

64 Potato purees, now considered part of the nutritious ready-to-eat food market, could be combined with  
65 hydrocolloids that interact with potato starches in an attempt to improve the overall product quality and  
66 facilitate processing (Shi & BeMiller, 2002). Therefore, scrutinizing the effects that certain food additives have  
67 on the starch structure and textural characteristics is important, because these effects affect the functionality of  
68 the whole food product.

69 The objectives of this study were to study the effects of food additives (agar, lecithin, glycerol, and alginate)  
70 and their concentrations on the mechanical and microstructural properties of potato puree, to evaluate the  
71 feasibility of the substances for 3D printing, to characterize the printing process parameters, such as the distance  
72 between the nozzle and the printing bed and the nozzle size and to investigate the effects of the printing process  
73 on the superficial color of the final products.

74

## 75 **Materials and Methods**

### 76 **Sample Preparation**

77 Commercial potato powder and whole milk were purchased from the local supermarket. Agar-agar, soy bean  
78 lecithin, sodium alginate and glycerol (food-grade) were procured from Sigma–Aldrich Co. The potato puree  
79 samples were prepared according to the following procedure: 450 mL of milk and 50 mL of water were first  
80 heated to 40°C, and then, 115 g of commercial potato powder was added. The mixture was then homogenized  
81 using an electrical hand blender (Braun, Germany). The same procedure was followed for preparing the puree  
82 samples with the different additives at concentrations of 0.5, 1.0 and 1.5% (Shi & BeMiller, 2002). Additives  
83 were added at quantities corresponding to the desired concentrations to the warmed solution (milk and water)  
84 prior to the incorporation of the potato powder. However, for the agar samples, the solutions were boiled to  
85 100°C, and the dehydrated potato was then added. All prepared puree samples were placed in an incubator and  
86 held at a temperature of 20°C preceding any measurements.

87

#### 88 **Extrusion Parameters and Determination of Specific Mechanical Energy**

89 To optimize the 3D printing process, the effects of additives (agar, alginate, glycerol and lecithin), applied  
90 speed (1, 2 and 4 mm·s<sup>-1</sup>) and extruder hole diameter (3 and 5 mm) on the extrusion process were studied using  
91 a TA.XT Plus Texture Analyzer (Stable MicroSystems, Godalwig. UK) device with a 50-kg cell load.

92 The specific mechanical energy (SME) was measured as an indicator of the energy efficiency and ease of flow  
93 of materials in the extrusion process (Guerrero, Beatty, Kerry, & De La Caba, 2012). Potato puree samples with  
94 and without additives were carefully scooped into acrylic cylinders to a height of 35 mm. The extrusion process  
95 was carried out by locking the distance traveled by the compression disc along the cylinder to 20 mm. For each  
96 extruder hole diameter (3 and 5 mm), speeds of 1, 2, and 4 mm·s<sup>-1</sup> were applied. The weight collected in kg and  
97 the force (kg·ms<sup>-2</sup>) applied during extrusion was measured. The SME was then calculated using the following  
98 formula:

$$99 \text{ SME (kJ/kg)} = [\text{Force (kg}\cdot\text{ms}^{-2}) \times \text{Distance (m)}] / \text{Weight collected (kg)} \quad (\text{Eq. 1})$$

100

#### 101 **Mechanical characteristics**

102 The mechanical characteristics of the additives alone at different concentrations (0.5, 1 and 1.5 g of additive in  
103 100 ml of distilled water) and after being added to the potato puree were tested, including the firmness,  
104 consistency and cohesiveness, using the aforementioned TA.XT Plus Textural Analyzer coupled with a back  
105 extrusion cell and a 35 mm disc. Samples of potato puree up to 40 mm high were placed in a standard-size  
106 cylinder. During the test, the disc penetrated a distance of 30 mm at a speed of  $2 \text{ mm.s}^{-1}$ , after which the probe  
107 returned to the original position. The peak in the positive area is taken as the measurement of firmness (kg).  
108 The area under the curve up to this point is defined as the consistency (kg.s). The maximum negative force is  
109 taken as an indication of the cohesiveness (kg) (Angioloni & Collar, 2009). Each sample was tested at least 5  
110 times.

111

### 112 **Scanning Electron Microscopy (SEM)**

113 Scanning electron microscopy (SERON SCI2100) was used to determine the surface structures of all the puree  
114 samples, which were first subjected to vacuum in a vacuum chamber to be dehydrated to avoid swelling in the  
115 microscope. Samples were then mounted on circular aluminum stubs with double-sided adhesive tape and  
116 coated with 20 nm of gold prior to observation. The SEM experiments were carried out at 15 kV and 4.0 K.

117

### 118 **Color Measurements of Potato Puree Samples**

119 To evaluate the color properties of the puree samples, a MINOLTA tristimulus colorimeter CR-400  
120 (MINOLTA camera, Osaka, Japan) calibrated with a white ceramic standard was used. The luminosities ( $L^*$ )  
121  $a^*$ ,  $b^*$  of the samples were measured, and the chroma ( $C=(a^{*2}+b^{*2})^{1/2}$  (saturation) and hue angle ( $H=\arctan$   
122 ( $b^*/a^*$ ) (matrix color)) were calculated. The color measurement values presented are the means of 6 tests  
123 performed before and after 3D printing.

124

### 125 **3D Food Printing conditions**

126 A RepRap BCN3D+ printer (designed by CIM Foundation) coupled with a syringe tool (100 mL volume and 4  
127 cm diameter) was used to 3D print the potato purees. The 3D printing process is based on extrusion and works

128 through the principle of joining materials layer-by-layer to make a final 3D object. The code for the desired 3D  
129 object is transferred through an SD card from a CAD program (CURA 15.02.01). Speeds set in the CURA  
130 program were as follows: travel speed= 100 mm.s<sup>-1</sup>, infill speed= 40 mm.s<sup>-1</sup>, printing speed= 40 mm.s<sup>-1</sup>, flow  
131 %= 100 and retraction speed= 40 mm.s<sup>-1</sup>.

132

### 133 **Statistical Analysis**

134 Statistical analyses of the data were conducted on Minitab 18 (Minitab Ink. Coventry, UK). Data concerning  
135 SME, textural characteristics and color assessment were tested for significant differences (p<0.05) using  
136 analysis of variance, one-way ANOVA and Tukey's HSD comparison test.

137

### 138 **Results and Discussion**

139

#### 140 **Effects of the Extrusion Parameters on Specific Mechanical Energy values of potato puree**

141 Varying the extruder hole diameter at a constant extrusion speed showed that decreasing the diameter of the  
142 extruder hole caused an increase in the SME of the samples due to higher acquired friction during extrusion,  
143 which necessitates an increase in the applied force (Table 1). Thus, a larger hole diameter (5 mm) facilitated  
144 extrusion with proper ordering of the layers. Moreover, significant differences were seen in the SME exerted at  
145 various extrusion speeds at a fixed extruder hole diameter; the SME and the extrusion speed were found to be  
146 inversely proportional, where the highest value for the SME was recorded at the lowest speed and gradually  
147 decreased significantly as the speed increased (Table 1). These results are in agreement with Chen et al.,  
148 (2010) and Guerrero et al., (2012), who reported that increasing the speed facilitated the flow of soybeans,  
149 hence decreasing the SME and the force required for extrusion.

150

#### 151 **Effects of additives on specific mechanical energy value of potato mixtures**

152 Table 2 shows the comparison between the potato puree and the potato purees with concentrations of 1% of  
153 different additives (alginate, agar, glycerol or lecithin) at an extruder hole diameter of 3 mm and an extrusion

154 speed of 2 mm.s<sup>-1</sup>. The SME value for the potato puree decreased significantly when 1% glycerol or lecithin  
155 was added (Table 2). This decrease could be attributed to the ability of glycerol and lecithin to retain moisture  
156 via the destabilization of the internal microstructure of the starch granules, therefore softening the material in  
157 accordance with Dankar et al., (2018) and Guerrero et al., (2012). Conversely, the addition of 1% alginate or  
158 agar in potato puree significantly increased the SME compared with the potato puree alone (Table 2). This  
159 result could be due to the tendency of hydrocolloids (agar or alginate) to form a continuous network of  
160 entanglements with starch molecules upon their addition to potatoes, leading to higher tensile strength and  
161 hardness and requiring a greater force to push the material out of an extruder (Fang, Zhang, & Wei, 2015).  
162 However, agar has demonstrated the ability to form a more complex gel network with starch molecules by  
163 previously providing the highest values for yield stress and thixotropy ( Dankar et al 2018). Therefore, the  
164 SME results allowed for classification of the samples based on their internal mechanical strengths as follows:  
165 glycerol ≤ lecithin ≤ potato puree < alginate < agar.

166 Furthermore, greater stability in the shape of the extruded layers occurred when alginate or agar was added to  
167 the potato puree, since the layers obtained were more consistent and able maintain their shape for a long time  
168 post-extrusion; although the extrusions of the puree alone and the puree with glycerol or lecithin were  
169 smoother, the extruded layers of these samples collapsed and recombined a few minutes after extrusion.

170

### 171 **Mechanical Characteristics of Potato Purees Combined With Additives**

172

173 The characterization of the mechanical properties of food is important and aids in assessing the behavior of the  
174 food during processing and consumption. The mechanical characteristics of the food additives alone and at the three  
175 different concentrations were first measured to understand the effects of the additives on the potato puree. The  
176 results showed that the mechanical strength of the agar additive was significantly different ( $p < 0.05$ ) from the other  
177 additives used in this work. On the other hand, the mechanical characteristics of the glycerol, lecithin and alginate  
178 additives showed no significant differences when the concentrations were changed from 0,5, to 1 and to 1,5%,  
179 whereas significant differences were detected in the mechanical properties of the agar measured at the different  
180 concentrations (Table 3).

181 The firmness, consistency and cohesiveness of the potato puree alone and the potato purees with the additives are  
182 summarized in Figure 1. The results of statistical analyses showed no significant differences ( $p < 0, 05$ ) between the  
183 firmness, cohesiveness and consistency of the potato puree and the purees with lecithin or glycerol at concentrations  
184 of 0.5, 1.0 and 1.5%. The addition of glycerol or lecithin to potato puree promotes more swollen starch granules  
185 (Dankar et al., 2018) with a wider spread in the particle size distribution, giving rise to low values for firmness,  
186 cohesiveness and consistency (Afoakwa, Paterson, Fowler, & Vieira, 2008) since these additives have emulsifying  
187 effects and the ability to lessen the structural integrities of foods such as waxy maize starch, cocoa spread cream,  
188 cassava starch and dark chocolate (Afoakwa, Paterson, Fowler, & Vieira, 2009; Souza et al., 2012 Koushki & Azizi,  
189 2015; Yang et al., 2016). On the other hand, the addition of alginate or agar significantly increased the mechanical  
190 values of the potato puree, with this elevation being enhanced when the concentrations of the additives were higher.  
191 However, the only significant difference in the consistency and cohesiveness between the agar and alginate samples  
192 was obtained at the concentration of 1%, which was marked by a higher consistency (Fig. 1). This behavior is  
193 attributable to the conveyed network structure that occurs between polysaccharide chains and the large-sized long  
194 additive molecules (agar or alginate) within the matrix and to the enhancement of the particle-particle surface  
195 contact (Huang, Kennedy, Li, Xu, & Xie, 2007; Dankar, et al. 2018). Similar mechanical strength results are  
196 obtained when carboxy-methyl cellulose, xanthan or carrageenan are added to sweet potato puree, whipped cream  
197 and carrots, respectively (Truong & Walter, 1994; Zhao, Zhao, Yang, & Cui, 2009; Sharma et al., 2017). The  
198 alginate alone showed mechanical property values similar to that of the glycerol and lecithin, but when the alginate  
199 was incorporated in the potato puree, the resulting mixture had high mechanical property values comparable with  
200 that of the agar.

201 This difference could be related to the interaction of the alginate with the calcium ions abundantly present in the  
202 milk and the potatoes used in the preparation of the samples, which consequently enhanced the textural strength and  
203 viscoelastic properties of the puree as also reported by Truong et al. (1995) and Fasina et al. (2003). On the other  
204 hand, the agar solely formed a gel that, upon interaction with other molecules, formed a more complex entangled  
205 network, which enhances its thickening ability (BeMiller, 2011; Milani & Maleki, 2012).

206



207 Thus in terms of mechanical strength, the greatest strengthening effect exerted by the agar and the alginate on  
208 the potato puree allows for products with the sufficient mechanical integrity to support a built-up layered  
209 geometry without deformation, in contrast to those with glycerol and lecithin.

210

### 211 **Scanning Electron Microscopy (SEM)**

212 The SEM micrographs highlighted clear microstructural differences between the different puree samples. At  
213 0.5%, the puree sample with lecithin was comparable to the potato puree alone but had a more cotton-like  
214 texture, whereas more noticeable changes in the potato puree were detected with the additions of the glycerol,  
215 agar and alginate. The alginate induced more folding, while the agar and glycerol yielded fibrillary network-like  
216 structures (Fig. 2b1, d1). However, this network-like structure was more compact in the sample with glycerol,  
217 which could be due to the ability of glycerol to enter the interior of polysaccharide chains and disrupt inter- and  
218 intra-molecular hydrogen bonds, making the polymer more elastic (Mali, Sakanaka, Yamashita, & Grossmann,  
219 2005). An expanded network with tiny wrinkles on the surface was produced by the agar. As the concentration  
220 of the agar increased, these tiny wrinkles evolved into a continuous phase with more folding and convolutions  
221 (Fig. 2d1, d3), which was the result of intense interactions between the starch and the agar (Phan, Debeaufort,  
222 Luu, & Voilley, 2005), agar gel formation and agar-agar interactions at higher concentrations (Dankar et al.,  
223 2018). Therefore, a firmer and more complex network of interactions was seen in the structure of the puree with  
224 1.5% agar, as revealed in the figures.

225 Similarly, the folding formed upon the addition of 0.5% alginate could be attributed to the formation of  
226 alginate-cation-polysaccharide complexes (Truong et al., 1995). When the concentration of alginate was  
227 increased to 1%, a more consistent and firm structure was formed. This result reflects the characteristic  
228 mechanical behavior of alginate; at concentrations of 1%, significant differences were detected between the  
229 agar and alginate samples, with a higher consistency value for the alginate, compared with a more cohesive  
230 structure for the agar that was expressed through higher folding formation. At 1.5% alginate, internal folding  
231 and convolutions were observed within the structure. The addition of additives at higher concentrations results  
232 in a greater availability of reactive sites and hence, increases their mode of functionality (Chen, Dickinson,  
233 Langton, & Hermansson, 2000). In fact, these convolutions largely explain the increase in the internal strength  
234 and mechanical characteristics of potato puree upon the addition of agar or alginate. In contrast, when the

235 concentration of lecithin in the potato puree was increased, a smooth surface with tiny pores was produced (Fig.  
236 2c1, c2). This behavior was ascribed to the two internal modes of action of lecithin. First, as regards the starch  
237 structure, lecithin can penetrate the starch molecules and induce modifications within the internal amylose-  
238 amylopectin and amylopectin-amylopectin bindings (Dankar et al., 2018). Consequently, more water molecules  
239 are able to penetrate the starch granules, leading to a more swelled starch structure that promotes the  
240 smoothness observed in the SEM figures (Fig. 2c1). Second, the emulsification properties of lecithin promoted  
241 the assembly of fine droplets that are an indication of a uniformly dispersed structure inside the food matrix  
242 (Afoakwa et al., 2009; Koushki & Azizi, 2015). Likewise, increasing the concentration of the glycerol induced  
243 a similarly smooth surface comparable to that of the potato puree. These factors explain the absence of  
244 significant differences between the mechanical characteristics of the potato puree alone and those for potato  
245 puree with glycerol or lecithin added. The microstructures of the potato puree samples combined with the  
246 textural data provide vital input for the 3D printing process, since formation of strong networks like those  
247 displayed in the samples with agar or alginate additions could be used to yield integrated shape-retention  
248 properties with stabilizing effects.

249

### 250 **3D printing Conditions for potato puree and potato puree with additives**

251 Many trials were performed on the BCN3D+ printer system to obtain the best printed product. When the  
252 distance from the nozzle to the printed bed was  $\geq 1$  cm, the flow of material was irregular due to delayed  
253 deposition, and the layers extruded were breakable and incompatibly attached to the previous layers for all the  
254 puree samples. After many trials, the critical nozzle height for high-quality printed potato purees was  
255 determined to be 0.5 cm. Similar results were obtained by Wang et al. (2018) and Hao et al. (2010) when  
256 printing surimi and chocolate gels, respectively; they found that the nozzle height critically affects the final  
257 geometry of the product.

258 The second optimization was the nozzle diameter, which directly affects the surface roughness and precision of  
259 printed objects (Yang et al., 2018). Because the 3D printer and the textural analyzer have different nozzle  
260 diameters, using the same diameter for both tests was impossible. This difference was minimized by using  
261 similar sized diameters, in both cases in the same range: 3 and 5 mm in the case of textural analyzer and 2 and  
262 4 mm for the 3D printer.

263

264 Using a 2 mm nozzle, printing with the potato puree and the potato purees with additives produced poor-  
265 quality products in which the layers did not overlay with one another properly, and the shape was not well-  
266 maintained, leading to a poor product mainly because the thin filament size that was extruded was not large  
267 enough to support the desired final structure for the potato puree. Whereas when a 4 mm nozzle was used, all  
268 the puree samples showed better printing quality. This result validates what was hypothesized while  
269 determining the extrusion parameters and SME values, where extrusion with the larger diameter size of 5 mm  
270 provided better layer organization than extrusion with a 3 mm diameter nozzle (refer to the SME results). A 4  
271 mm nozzle is sized within the range of these two values and hence, the 2 mm nozzle was excluded. The critical  
272 nozzle diameter is specific to the particular type of food extruded, as has been stated by several authors (Hao et  
273 al., 2010; Yang, Zhang, Bhandari, & Liu, 2018).

274 Another consideration for the printing process is the type of substrate to be printed. Of the mixtures  
275 prepared, the potato purees with the agar or alginate at the different concentrations tested were able to be  
276 printed in stable structures with many built-up layers that held their shape for a long time without collapsing  
277 (Fig. 3a and 3b, puree with 0,5% alginate and potato puree alone, respectively). This result could be directly  
278 attributed to the high internal strengths, demonstrated by the highest values measured for the textural properties  
279 (firmness, consistency, cohesiveness) and the high SME values exhibited by the purees with agar or alginate;  
280 the incorporation of gums into mashed potatoes has reportedly generally increased their resistance to  
281 deformation (Liu, Zhang, & Bhandari, 2018). Furthermore, the stabilization of the final shapes printed with the  
282 purees with the alginate or agar increased with increasing additive concentration in the potato puree, except for  
283 the 1.5% agar, which displayed high SME and mechanical values compared with the other additives and in  
284 which the sample was more solid-like, retarding the process of printing.

285 The potato puree and the purees with glycerol or lecithin showed different behavior, in which printing a  
286 multiple-layered 3D structure started well with a smooth flow of potato paste (Fig. 3d). Nevertheless, when the  
287 structure reached its final stage, the many layers that were printed collapsed into each other (Fig. 3e), resulting  
288 in a poorly defined and deformed product, due to the low firmness, consistency and internal stability possessed  
289 by these samples, which confirms the previous results concerning the shape stability of the extruded layers

290 from the texturometer. Conversely, these materials behaved well during the printing of flat structures with few  
291 layers. Thus, the stability of the final product depends not only on the substrate properties but also on the  
292 targeted geometry shape to be printed. The effect of the printed substrate on the quality of the final product has  
293 been reported by several authors. Yang et al. (2018) and Liu et al. (2018) observed that the addition of potato  
294 starch in certain concentration ranges in lemon juice and mashed potatoes, respectively, increased the viscosity  
295 of the printed substrate and therefore, ensured the delivery of more stable end-products. These results confirm  
296 that alginate and agar serve as better additives in food technological applications like 3D printing.

### 297 **Characteristics of the Final 3D Printed Products**

298 The color surface parameters for the puree samples, including the Luminosity, Chroma and hue angle, are  
299 dependent on the particulate distribution, absorptivity and scattering coefficients (Hutchings, 2011).

300 Each food additive used had a different effect on the surface color of the potato puree due to their distinct  
301 effects on the starch structure and the distribution of the particles and their respective arrangements. Only the  
302 alginate and agar produced significant differences ( $p < 0.05$ ) in the luminosity parameters of the potato purees,  
303 with decreases in their values (Fig. 4), which could be attributed to alterations of the starch globule sizes and  
304 morphologies. Additionally, solely the agar exhibited an effect on the hue angle of the puree by elevating the  
305 level. The glycerol and lecithin produced significant differences in the Chroma of the potato purees by  
306 decreasing the saturation property, which could be ascribed to changes in the starch granule morphologies and  
307 sizes and the starch internal networks (Dankar et al., 2018). However, Afoakwa et al., (2008) reported that the  
308 addition of lecithin did not affect the luminosity, Chroma or hue angle of dark chocolates.

309 Generally, increasing the concentration of the additives in the potato puree did not cause any significant  
310 differences in the luminosity or hue angle. However, increasing the concentration of lecithin to 1.5% produced  
311 a significant difference in the Chroma of the potato puree by further decreasing the degree of saturation (Fig.  
312 4). This result could be attributed to the lecithin (at 1.5%) producing increased modifications of the internal  
313 starch granule interactions, yielding a dull surface appearance (less saturated).

314 On the other hand, Le Tohic et al. (2018) found that the printing process affected the surface color of printed  
315 cheeses, inducing a small decrease in the luminosity in contrast to our work, where the 3D printing process had  
316 no significant effect on any of the color parameters studied for all the puree samples. Thus, the 3D printing

317 process was proven to not influence the surface color of printed potato purees, which satisfies some consumers  
318 and companies.

319 Additionally, several attempts have been made to design soft and tasty products to satisfy the desires of the  
320 elderly and those facing swallowing and mastication problems, enhancing their appetites with safe, novel and  
321 nutritious foods (Aguilera & Park, 2016). Table 4 presents the firmness values for all the puree samples in kPa,  
322 which were converted according to the following formula:

$$323 \text{ kPa} = \text{kg/cm}^2 \times 98.0665 \quad (\text{Eq. 2})$$

324 The accessible range of consumption for elderly or people facing mastication problems is within the firmness  
325 value range of 20 to 40 kPa (Serizawa et al., 2014), and all the tested puree samples fit well within this  
326 acceptable range. Although the maximum firmness for agar was measured at the concentration of 1.5% (25.8  
327 kPa), no significant difference was detected between the firmness values of the purees with agar or alginate at  
328 1.5% (Table 4). Similar work was conducted by Serizawa et al. (2014) to study the feasibility of printed  
329 hydrocolloids, agar and gelatin at different concentrations for the elderly. The higher the concentration of agar  
330 in water, the higher its hardness, such that 20% agar possessed the highest hardness of the tested samples (45  
331 kPa). The addition of gelatin demolishes the strength of the agar, which was demonstrated by a decrease in the  
332 hardness of the samples. This result confirms the results showing that the agar was the additive that increased  
333 the firmness and mechanical properties of the potato puree. The purees with 1.5% glycerol or lecithin showed  
334 the lowest firmness pressures, approximately equal to 3.82 kPa; however, neither functioned as proper  
335 additives for maintaining the stability and structure of the 3D products post-printing.

336 Potato purees could also serve as a healthy customized food for the second most susceptible sector of people,  
337 children. Studies have reported that children are willing to try a wider variety of foods if they are plated in an  
338 aesthetic and funny way (Zampollo, Kniffin, Wansink, & Shimizu, 2012).

339

## 340 **Conclusion**

341 Alginate (from 0.5% to 1.5%) and agar (0.5 and 1%) were the additives that provided more stability for printed  
342 products with corresponding increases in specific mechanical energy (SME).

343 The mechanical characteristics of firmness, consistency and cohesiveness showed significant differences  
344 ( $p < 0.05$ ) after the addition of agar or alginate to potato purees, and the effect was greater at higher

345 concentrations. Nevertheless, when not mixed with potato puree, only agar had a significant difference in  
346 mechanical characteristics among the additives.

347 The SEM figures demonstrate the different microstructural characteristics within the potato puree samples,  
348 wherein lecithin produced a cotton-like structure, alginate produced more folding, glycerol induced a more  
349 continuous network-like structure due to its ability to disrupt the inter- and intra-network interactions between  
350 the polysaccharide chains, and agar induced more folding and convolutions, which complements the textural  
351 value results.

352 The best extrusion conditions for the 3D-printed potato purees were achieved with a nozzle size of 4 mm and a  
353 critical nozzle height of 0.5 cm using a printing substrate of potato puree mixed with alginate (0.5 to 1.5%) or  
354 agar (0.5 and 1%) to provide the finest resolution of stable end-products with many built-up layers.

355 The optimal mechanical characteristic values for obtaining good quality 3D printed potato purees with  
356 additives fall within the following ranges: a firmness between 0.94 and 2.10 kg, a consistency between 11.6  
357 and 26.5 kg·s and a cohesiveness between 0.9 and 2.1 kg. The color of the final product is not affected by the  
358 3D printing process and all the printed samples showed good firmness values that fit well within the range of  
359 the maximum lingual pressure (20-40 kPa), thus enabling potato puree or other foods to be used in innovative  
360 designs to produce a good substitute for the unappealing meals available for people facing mastication  
361 problems.

## 362 **Acknowledgements**

363 Authors wish to thank the CIM foundation for providing the BCN 3D+ printer and Dr. Roland Habchech for  
364 the use of the SEM.

## 365 **References**

366 Afoakwa, E. O., Paterson, A., Fowler, M., & Vieira, J. (2008). Particle size distribution and compositional effects on  
367 textural properties and appearance of dark chocolates. *Journal of Food Engineering*, 87(2), 181–190.

368 <https://doi.org/10.1016/j.jfoodeng.2007.11.025>

369 Afoakwa, E. O., Paterson, A., Fowler, M., & Vieira, J. (2009). Microstructure and mechanical properties related to  
370 particle size distribution and composition in dark chocolate. *International Journal of Food Science &*

371 *Technology*, 44(1), 111–119. <https://doi.org/10.1111/j.1365-2621.2007.01677.x>

372 Aguilera, J. M., & Park, D. J. (2016). Texture-modified foods for the elderly: Status, technology and opportunities.  
373 *Trends in Food Science and Technology*, 57, 156–164. <https://doi.org/10.1016/j.tifs.2016.10.001>

374 Angioloni, A., & Collar, C. (2009). Small and large deformation viscoelastic behaviour of selected fibre blends with  
375 gelling properties. *Food Hydrocolloids*, 23(3), 742–748. <https://doi.org/10.1016/j.foodhyd.2008.04.005>

376 Bak, D. (2003). Rapid prototyping or rapid production? 3D printing processes move industry towards the latter.  
377 *Assembly Automation*, 23(4), 340–345. <https://doi.org/10.1108/01445150310501190>

378 BeMiller, J. N. (2011). Pasting, paste, and gel properties of starch–hydrocolloid combinations. *Carbohydrate*  
379 *Polymers*, 86(2), 386–423. <https://doi.org/10.1016/J.CARBPOL.2011.05.064>

380 Chen, J., Dickinson, E., Langton, M., & Hermansson, A. (2000). Mechanical Properties and Microstructure of Heat-  
381 set Whey Protein Emulsion Gels : Effect of Emulsifiers. *Lebensm.-Wiss. u.-Technol. Academic Press*, 33(4),  
382 299–307. <https://doi.org/10.1006/fstl.2000.0656>

383 Dankar, I., Haddarah, A., El Omar, F., Sepulcre, F., & Pujolà, M. (2018). Assessing the microstructural and  
384 rheological changes induced by food additives on potato puree. *Food Chemistry*, 240.  
385 <https://doi.org/10.1016/j.foodchem.2017.07.121>

386 Dankar, I., Haddarah, A., Omar, F. E. L., Sepulcre, F., & Pujolà, M. (2018). 3D printing technology: The new era  
387 for food customization and elaboration. *Trends in Food Science & Technology*, 75, 231–242.  
388 <https://doi.org/10.1016/J.TIFS.2018.03.018>

389 de Roos, B. (2013). Personalised nutrition: ready for practice? *Proceedings of the Nutrition Society*, 72(01), 48–52.  
390 <https://doi.org/10.1017/S0029665112002844>

391 Derossi, A., Caporizzi, R., Azzollini, D., & Severini, C. (2017). Application of 3D printing for customized food. A  
392 case on the development of a fruit-based snack for children. *Journal of Food Engineering*, 220, 65–75  
393 <https://doi.org/10.1016/j.jfoodeng.2017.05.015>

394 Fang, Y., Zhang, B., & Wei, Y. (2015). Effects of the specific mechanical energy on the physicochemical properties  
395 of texturized soy protein during high-moisture extrusion cooking. *Journal of Food Engineering*, 121, 32–38.  
396 <https://doi.org/10.1016/j.jfoodeng.2013.08.002>

397 Fasina, O. O., Walter, W. M., Fleming, H. P., & Simunovic, N. (2003). Viscoelastic properties of restructured

398 sweetpotato puree. *International Journal of Food Science and Technology*, 38(4), 421–425.  
399 <https://doi.org/10.1046/j.1365-2621.2003.00711.x>

400 Godoi, F. C., Prakash, S., & Bhandari, B. R. (2016). 3d printing technologies applied for food design: Status and  
401 prospects. *Journal of Food Engineering*. <https://doi.org/10.1016/j.jfoodeng.2016.01.025>

402 Guerrero, P., Beatty, E., Kerry, J. P., & De La Caba, K. (2012). Extrusion of soy protein with gelatin and sugars at  
403 low moisture content. *Journal of Food Engineering*, 110(1), 53–59.  
404 <https://doi.org/10.1016/j.jfoodeng.2011.12.009>

405 Hao, L., Mellor, S., Seaman, O., Henderson, J., Sewell, N., & Sloan, M. (2010). Material characterisation and  
406 process development for chocolate additive layer manufacturing. *Virtual and Physical Prototyping*, 5(2), 57–  
407 64. <https://doi.org/10.1080/17452751003753212>

408 Hutchings, J. B. (2011). *Food Color and Appearance* (2nd ed.). Glasgow, UK: Springer. Retrieved from  
409 <http://www.springer.com/gp/book/9781441951939>

410 Koushki, M., & Azizi, M. (2015). Effect of Different Formulations on Mechanical and Physical Properties of  
411 Calcium Alginate Edible Films. *Journal of Food Quality*, 2(2), 45–50.

412 Le Tohic, C., O’Sullivan, J. J., Drapala, K. P., Chartrin, V., Chan, T., Morrison, A. P., ... Kelly, A. L. (2017). Effect  
413 of 3D printing on the structure and textural properties of processed cheese. *Journal of Food Engineering*,  
414 220,56-64 . <https://doi.org/10.1016/j.jfoodeng.2017.02.003>

415 Lille, M., Nurmela, A., Nordlund, E., Metsä-Kortelainen, S., & Sozer, N. (2017). Applicability of protein and fiber-  
416 rich food materials in extrusion-based 3D printing. *Journal of Food Engineering*, 220, 20-27  
417 <https://doi.org/10.1016/j.jfoodeng.2017.04.034>

418 Lipton, J., Arnold, D., Nigl, F., Lopez, N., Cohen, D., Norén, N., & Lipson, H. (2010). MUTLI-MATERIAL FOOD  
419 PRINTING WITH COMPLEX INTERNAL STRUCTURE SUITABLE FOR CONVENTIONAL POST-  
420 PROCESSING. In: *21st Annual International Solid Freeform Fabrication Symposium - an Additive  
421 Manufacturing Conference, SFF 2010*, 809–815.

422 Liu, Z., Zhang, M., & Bhandari, B. (2018). Effect of gums on the rheological, microstructural and extrusion printing  
423 characteristics of mashed potatoes. *International Journal of Biological Macromolecules*, 117, 1179–1187.



424 <https://doi.org/10.1016/j.ijbiomac.2018.06.048>

425 Mali, S., Sakanaka, L. S., Yamashita, F., & Grossmann, M. V. E. (2005). Water sorption and mechanical properties  
426 of cassava starch films and their relation to plasticizing effect. *Carbohydrate Polymers*, 60(3), 283–289.  
427 <https://doi.org/10.1016/J.CARBPOL.2005.01.003>

428 Milani, J., & Maleki, G. (2012). Hydrocolloids in Food Industry. In D. B. Valdez (Ed.), *Food Industrial Processes-*  
429 *Methods and Equipment* (p. 418). Iran: INTECH. <https://doi.org/10.5772/2491>

430 Periard, D., Schaal, N., Schaal, M., Malone, E., & Lipson, H. (2007). Printing Food. *Proceedings of the 18th Solid*  
431 *Freeform Fabrication Symposium*, 564–574. <https://doi.org/10.1007/s00216-007-1293-0>

432 Phan, T. D., Debeaufort, F., Luu, D., & Voilley, A. (2005). Functional Properties of Edible Agar-Based and Starch-  
433 Based Films for Food Quality Preservation. *Journal of Agriculture AND Food Chemistry*, 53(4), 973–981.  
434 <https://doi.org/10.1021/JF040309S>

435 Serizawa, R., Shitara, M., Gong, J., Makino, M., Kabir, M. H., & Furukawa, H. (2014). 3D jet printer of edible gels  
436 for food creation. *Proceedings of SPIE - The International Society for Optical Engineering*, 9058, 1–5.  
437 <https://doi.org/10.1117/12.2045082>

438 Severini, C., Derossi, A., Ricci, I., Caporizzi, R., & Fiore, A. (2017). Printing a blend of fruit and vegetables. New  
439 advances on critical variables and shelf life of 3D edible objects. *Journal of Food Engineering*, 220,89-100  
440 <https://doi.org/10.1016/j.jfoodeng.2017.08.025>

441 Sharma, M., Kristo, E., Corredig, M., & Duizer, L. (2017). Effect of hydrocolloid type on texture of pureed carrots:  
442 Rheological and sensory measures. *Food Hydrocolloids*, 63, 478–487.  
443 <https://doi.org/10.1016/j.foodhyd.2016.09.040>

444 Shi, X., & BeMiller, J. N. (2002). Effects of food gums on viscosities of starch suspensions during pasting.  
445 *Carbohydrate Polymers*, 50(1), 7–18. [https://doi.org/10.1016/S0144-8617\(01\)00369-1](https://doi.org/10.1016/S0144-8617(01)00369-1)

446 Simon. (2015). PepsiCo is creating new deep-ridged potato chips on 3D printers | 3D Printer News & 3D  
447 Printing News.

448 Southerland, D., Walters, P., & Huson, D. (2011). Edible 3D Printing. *Digital Fabrication 2011 Conference, NIP*  
449 *27, 27th International Conference on Digital Printing Technologies*, 819–822.

450 Souza, A. C., Benze, R., Ferrão, E. S., Ditchfield, C., Coelho, A. C. V, & Tadini, C. C. (2012). Cassava starch  
451 biodegradable films: Influence of glycerol and clay nanoparticles content on tensile and barrier properties and  
452 glass transition temperature. *LWT - Food Science and Technology*, *46*(1), 110–117.  
453 <https://doi.org/10.1016/j.lwt.2011.10.018>

454 Sun, J., Peng, Z., Yan, L., Fuh, J. Y. H., Hong, G. S., H Fuh, J. Y., & Soon Hong, G. (2015). 3D food printing—An  
455 innovative way of mass customization in food fabrication. *Journal of Bioprinting*, *1*(1), 27–38.  
456 <https://doi.org/10.18063/IJB.2015.01.006>

457 Truong, V. D., & Walter, W. M. (1994). Physical and Sensory Properties of Sweetpotato Puree Texturized with  
458 Cellulose Derivatives. *Journal of Food Science*, *59*(6), 1175–1180.

459 Truong, V. D., Walter, W. M., JR., & Giesbrecht, F. G. (1995). texturization and sensory properties of sweet potato  
460 puree with alginate. *Journal of Food Science*, *60*(5), 1054–1059.

461 Wang, L., Zhang, M., Bhandari, B., & Yang, C. (2017). Investigation on fish surimi gel as promising food material  
462 for 3D printing. *Journal of Food Engineering*, *220*, 101-108 <https://doi.org/10.1016/j.jfoodeng.2017.02.029>

463 Yang, F., Zhang, M., Bhandari, B., & Liu, Y. (2018). Investigation on lemon juice gel as food material for 3D  
464 printing and optimization of printing parameters. *LWT - Food Science and Technology*, *87*, 67–76.  
465 <https://doi.org/10.1016/j.lwt.2017.08.054>

466 Yang, Q., Yang, Y., Luo, Z., Xiao, Z., Ren, H., Li, D., & Yu, J. (2016). Effects of Lecithin Addition on the  
467 Properties of Extruded Maize Starch. *Journal of Food Processing and Preservation*, *40*(1), 20–28.  
468 <https://doi.org/10.1111/jfpp.12579>

469 Zampollo, F., Kniffin, K. M., Wansink, B., & Shimizu, M. (2012). Food plating preferences of children: The  
470 importance of presentation on desire for diversity. *Acta Paediatrica, International Journal of Paediatrics*,  
471 *101*(1), 61–66. <https://doi.org/10.1111/j.1651-2227.2011.02409.x>

472 Zhao, Q., Zhao, M., Yang, B., & Cui, C. (2009). Effect of xanthan gum on the physical properties and textural  
473 characteristics of whipped cream. *Food Chemistry*, *116*(3), 624–628.  
474 <https://doi.org/10.1016/j.foodchem.2009.02.079>

475 Zhuo, P. (2015). *3D FOOD PRINTER : DEVELOPMENT OF DESKTOP 3D PRINTING SYSTEM FOR FOOD*

476        *PROCESSING*. National University of Singapore.

477

478

479

480

481

482

483

484

485

486

487

488

489

490

491

492

493

494

495

496

497

498

499

500

501

502

503

504

505

506

507  
508  
509

**Table 1** Values of Force, weight collected and SME of potato puree extruded at different speeds and hole diameter

Extrusion conditions		Parameters		
Diameter hole	Speed (mm.s <sup>-1</sup> )	Force (kg.ms <sup>-2</sup> )	Weight collected (g)	SME (KJ.kg <sup>-1</sup> )
5mm	1	113.4 ±0.6 <sup>a</sup>	36.6 ±0.3 <sup>a</sup>	62.0±0.2 <sup>a</sup>
	2	86.1 ±1.6 <sup>b</sup>	35.5 ±0.4 <sup>a</sup>	48.5±1.5 <sup>b</sup>
	4	68.1 ±1.3 <sup>c</sup>	34.0 ±1.5 <sup>a</sup>	40.1±1.0 <sup>c</sup>
3mm	1	198.2 ±7.8 <sup>A</sup>	35.0 ±2.1 <sup>a,b</sup>	120.8±3.1 <sup>A</sup>
	2	141.9 ±2.2 <sup>B</sup>	31.0 ±0.7 <sup>b,c</sup>	91.7 ±3.5 <sup>B</sup>
	4	107.5 ±2.7 <sup>C</sup>	31.8 ±0.7 <sup>b,c</sup>	67.7±0.1 <sup>C</sup>

510  
511  
512  
513  
514  
515  
516  
517  
518  
519  
520  
521  
522  
523  
524  
525  
526

Values are mean of three replicates ± standard deviation.

Different letters of Mean values in the same column differ significantly (P<0.05) (small and capitals letters for 5 and 3 mm diameter hole respectively)

527 Table 2 Values of extrusion parameters and Specific Mechanical Energy (SME) obtained at 3mm hole  
 528 diameter and 2mm.s<sup>-1</sup> speed printer of potato puree with 1% of different additives

Samples	Force applied (kg.ms <sup>-2</sup> )	Weight collected (g)	SME (kJ.kg <sup>-1</sup> )
potato puree	141.9±2.2 <sup>c</sup>	31.0±0.7 <sup>b</sup>	91.7±3.5 <sup>c</sup>
potato puree+1% alginate	261.6±3.8 <sup>b</sup>	32.2±1.3 <sup>a,b</sup>	162.4±10.1 <sup>b</sup>
potato puree+1% agar	332.1±10.6 <sup>a</sup>	30.6±1.0 <sup>a,b</sup>	217.0±0.3 <sup>a</sup>
potato puree+1% glycerol	82.3±1.0 <sup>d</sup>	31.7±0.5 <sup>a,b</sup>	51.9±2.1 <sup>d</sup>
potato puree+1% lecithin	86.5±2.8 <sup>e</sup>	33.3±0.8 <sup>a</sup>	52.0±0.6 <sup>d</sup>

529

530

531 Values are mean of three replicates ± standard deviation.

532 Different letters of Mean values in the same column (corresponding to the same parameter) differ  
 533 significantly (P<0.05

534

535

536

537

538

539

540

541

542

543

544

545

546

547

548

549

550

551 **Table 3** Values of Mechanical Characteristics: firmness, consistency and cohesiveness of additives at 0.5,1 and  
552 1.5 % concentration

553

Additive	Concentration (%)	Firmness (g)	Consistency (g.s)	Cohesiveness (g)
Glycerol	0.5	15.4±0.9 <sup>a</sup>	275.0±29.2 <sup>a</sup>	-3.6±3.0 <sup>a</sup>
	1	15.0±1.4 <sup>a</sup>	293.8±36.4 <sup>a</sup>	-2.4±0.4 <sup>a</sup>
	1.5	13.5±1.5 <sup>a</sup>	249.5±43.1 <sup>a</sup>	-2.5±0.9 <sup>a</sup>
Lecithin	0.5	13.9±0.9 <sup>a</sup>	255.0±25.5 <sup>a</sup>	-3.1±0.5 <sup>a</sup>
	1	14.7±1.4 <sup>a</sup>	269.8±13.5 <sup>a</sup>	-2.4±0.4 <sup>a</sup>
	1.5	14.2±0.9 <sup>a</sup>	275.2±29.2 <sup>a</sup>	-2.3±0.6 <sup>a</sup>
Agar	0.5	336.0±54.9 <sup>b</sup>	2347.0±699.5 <sup>b</sup>	-74.0±36.5 <sup>b</sup>
	1	1202.3±158.8 <sup>c</sup>	11858.7±417.5 <sup>c</sup>	-245.3±31.7 <sup>c</sup>
	1.5	5864.7±193.6 <sup>d</sup>	55070.0±1714.5 <sup>d</sup>	-687.7±86.5 <sup>d</sup>
Alginate	0.5	13.5±1.3 <sup>a</sup>	204.2±50.0 <sup>a</sup>	-3.4±0.5 <sup>a</sup>
	1	16.0±0.8 <sup>a</sup>	313.7±34.5 <sup>a</sup>	-4.3±0.5 <sup>a</sup>
	1.5	15.3±0.6 <sup>a</sup>	291.2±13.2 <sup>a</sup>	-2.7±0.4 <sup>a</sup>

554

Val  
ues  
are  
mea  
n of  
thre  
e  
repli  
cate  
s ±  
stan  
dard

568 deviation.

569 Different letters of Mean values in the same column (corresponding to the same parameter) differ significantly  
570 (P<0.05)

571

572

573

574

575

576

577

578

579

580

581

582

583

584

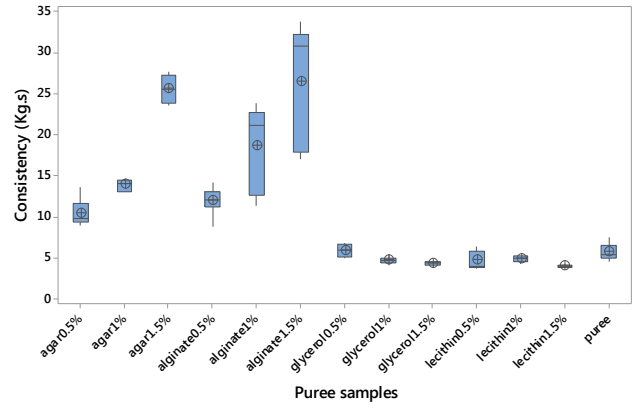
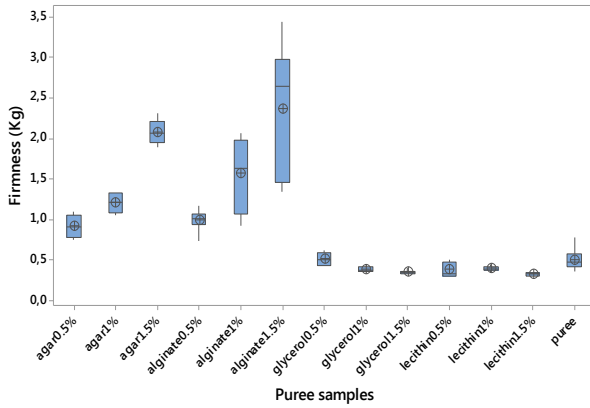
585  
 586  
 587  
 588  
 589  
 590  
 591  
 592  
 593  
 594  
 595  
 596  
 597  
 598  
 599  
 600  
 601  
 602  
 603  
 604  
 605  
 606  
 607  
 608  
 609  
 610  
 611  
 612  
 613  
 614

**Table 4** Firmness values (kPa) of potato puree samples with glycerol, lecithin, agar and alginate at 0.5, 1 and 1.5% concentration

Sample	Concentration (%)	Firmness (kPa)
Potato puree +Alginate	0.5	10.0 <sup>c</sup>
	1	13.2 <sup>b,c</sup>
	1.5	22.7 <sup>a</sup>
Potato puree +Agar	0.5	10.9 <sup>c</sup>
	1	17.1 <sup>b</sup>
	1.5	25.8 <sup>a</sup>
Potato puree +Lecithin	0.5	4.3 <sup>d</sup>
	1	4.4 <sup>d</sup>
	1.5	3.6 <sup>d</sup>
Potato puree +Glycerol	0.5	5.0 <sup>d</sup>
	1	4.2 <sup>d</sup>
	1.5	3.8 <sup>d</sup>
Potato puree	-----	5,5 <sup>d</sup>

Values are replicates mean of three

Different letters with Mean values in the same column (corresponding to the same parameter) differ significantly (P<0.05)



616

617

618

619

620

621

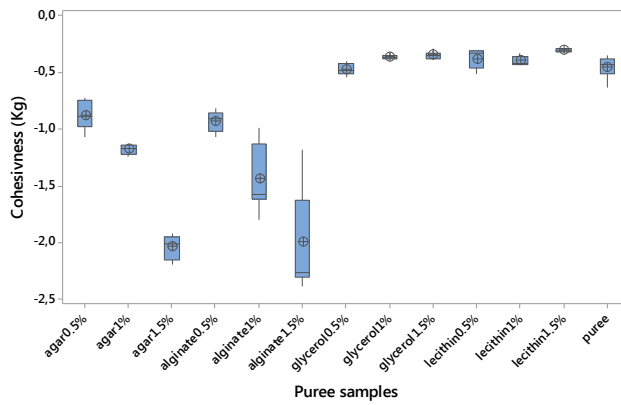
622

623

624

625

626



627 **Fig.1** Box plot analysis of the mechanical characteristics firmness (a), consistency (b) and cohesiveness (c) of potato puree and  
 628 potato puree with agar, alginate, glycerol and lecithin at concentration of 0.5, 1 and 1.5 % .

629

630

631

632

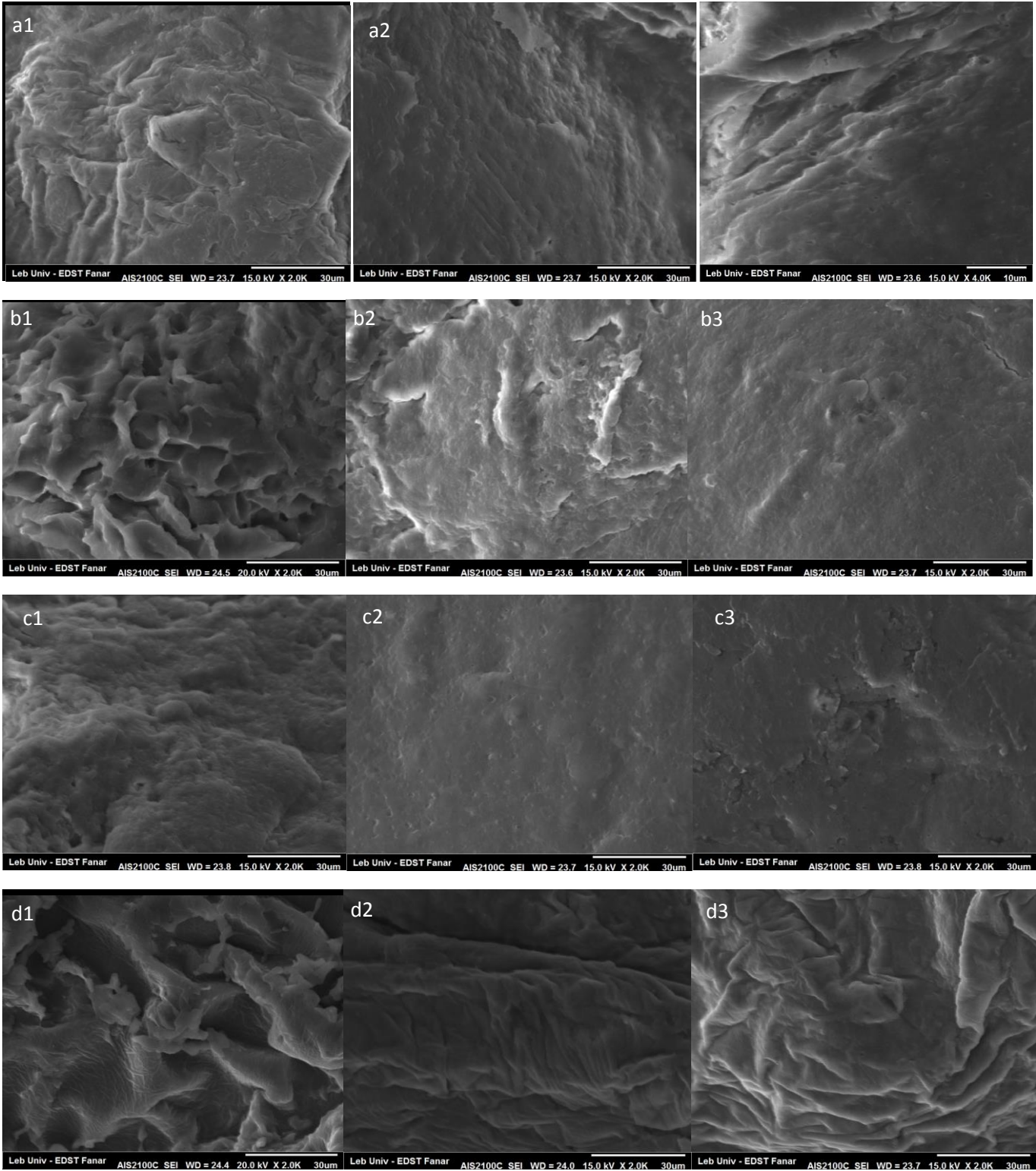
633

634

635 **Fig. 2** Scanning electron microscopy analysis of potato puree samples  
 636 1% (column 2), and 1.5% (column 3) of additive concentration: a1, a2,

with 0.5% (column 1),  
 a3 potato puree with

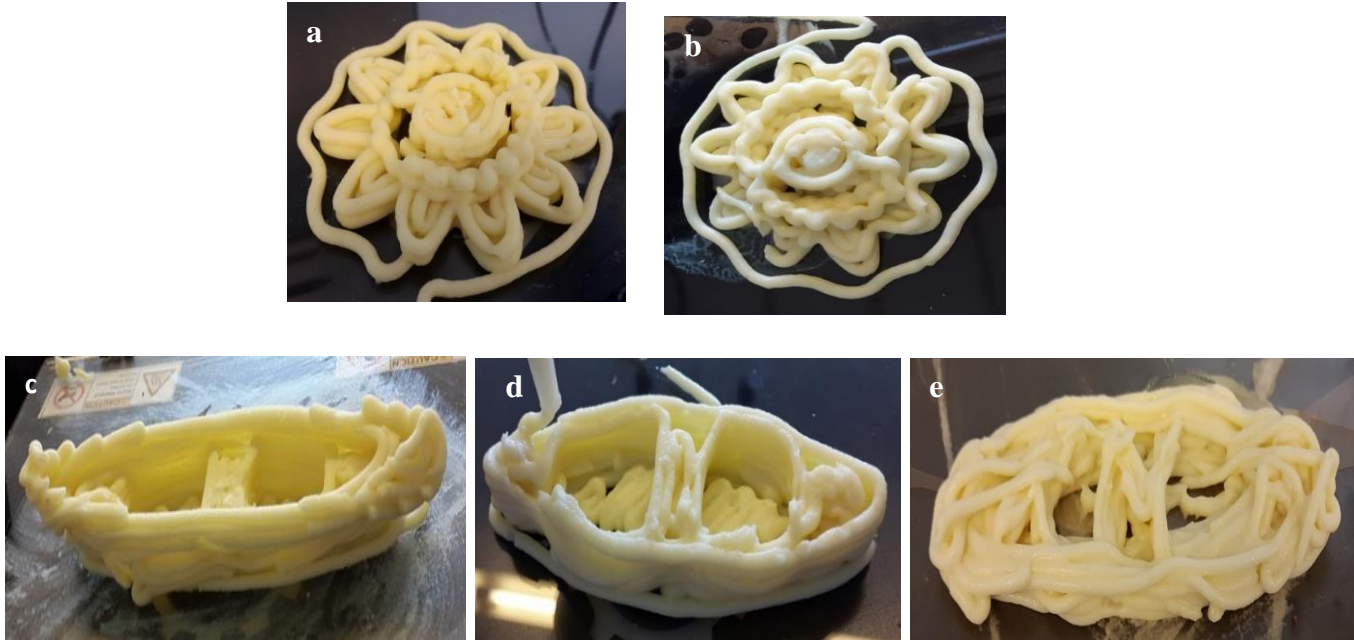




637 alginate; b1, b2, b3 b potato puree with glycerol; c1, c2, c3 potato puree with lecithin; d1, d2, d3 potato  
 638 puree with agar. \*arrows correspond to pores formation within lecithin.

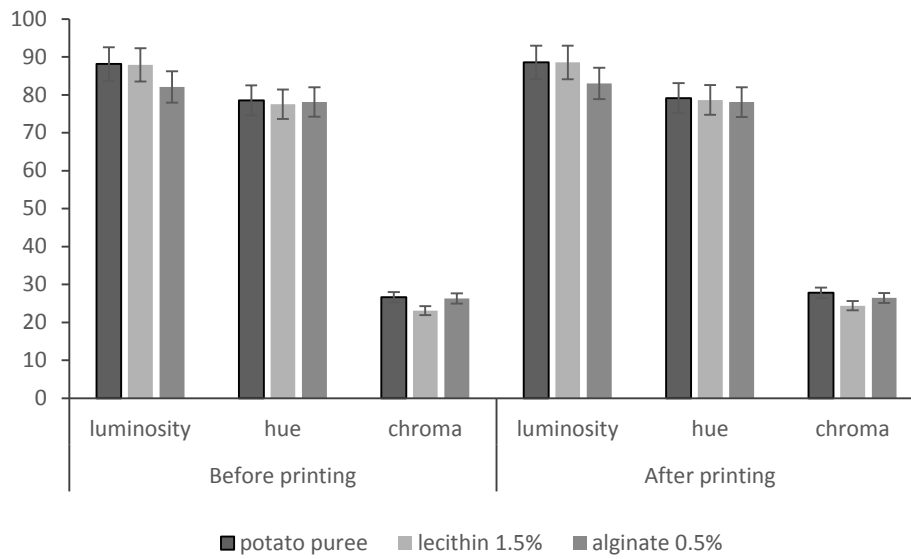
639

640  
641  
642  
643  
644  
645  
646  
647  
648  
649  
650  
651  
652  
653  
654  
655  
656  
657  
658  
659  
660  
661  
662  
663  
664  
665  
666  
667  
668



**Fig. 3** The influence of the substrate and shape design on 3D printed products of potato puree alone or with additives when is extruded at 4mm nozzle. Fig 3(a, b) Influence of substrate printed : (a) potato puree with 0.5% alginate, (b) potato puree alone, Fig 3 (c, d, e) Influence of shape design (c) potato puree with 1% alginate, (d) potato puree alone at primary stages of printing and (e) potato puree alone at final stages of printing.

669



670

671

672 **Fig. 4** Values of Luminosity, Chroma and Hue angle in color surface of potato puree alone, potato puree  
673 with 1.5% lecithin and potato puree with 0.5% alginate before and after 3D printing. Values are mean  $\pm$   
674 standard deviation (n=6)

675

676

677

678

679

680

681

682

683

684