

NIST Interlaboratory Study on Glycosylation Analysis of Monoclonal Antibodies: Comparison of Results from Diverse Analytical Methods

Authors

Maria Lorna A. De Leoz, David L. Duewer, Adam Fung, Lily Liu, Hoi Kei Yau, Oscar Potter, Gregory O. Staples, Kenichiro Furuki, Ruth Frenkel, Yunli Hu, Zoran Sosic, Peiqing Zhang, Friedrich Altmann, Clemens Grünwald-Grube, Chun Shao, Joseph Zaia, et al.

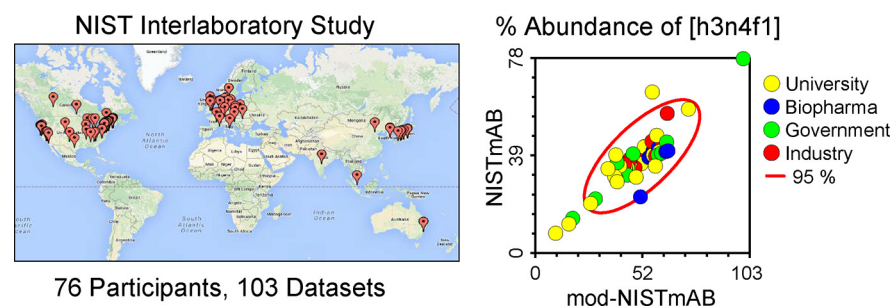
Correspondence

lornadeleoz@gmail.com

In Brief

A broad-based interlaboratory study of glycosylation profiles of a reference and modified IgG antibody involving 103 reports from 76 laboratories.

Graphical Abstract



Highlights

- A broad-based interlaboratory study of the glycosylation of a reference antibody: NISTmAb.
- 103 reports were received from 76 diverse laboratories worldwide.
- Analysis involved two samples, the NISTmAb and an enzymatically modified sample, enabling within-lab separation of random and systematic errors using the “Youden two-sample” method.
- Consensus values were derived and similar performance across all experimental methods was noted.



NIST Interlaboratory Study on Glycosylation Analysis of Monoclonal Antibodies: Comparison of Results from Diverse Analytical Methods*

Maria Lorna A. De Leoz^{1,84,95}, David L. Duewer², Adam Fung³, Lily Liu³, Hoi Kei Yau³, Oscar Potter⁴, Gregory O. Staples⁴, Kenichiro Furuki⁵, Ruth Frenkel⁶, Yunli Hu⁶, Zoran Susic⁶, Peiqing Zhang⁷, Friedrich Altmann⁸, Clemens Grünwald-Grube⁸, Chun Shao⁹, Joseph Zaia⁹, Waltraud Evers¹⁰, Stuart Pengelley¹⁰, Detlev Suckau¹⁰, Anja Wiechmann¹⁰, Anja Resemann¹⁰, Wolfgang Jabs^{10,11}, Alain Beck¹², John W. Froehlich¹³, Chuncui Huang¹⁴, Yan Li¹⁴, Yaming Liu¹⁴, Shiwei Sun¹⁵, Yaojun Wang¹⁵, Youngsuk Seo¹⁶, Hyun Joo An¹⁶, Niels-Christian Reichardt¹⁷, Juan Echevarria Ruiz^{17,85}, Stephanie Archer-Hartmann¹⁸, Parastoo Azadi¹⁸, Len Bell¹⁹, Zsuzsanna Lakos²⁰, Yanming An²¹, John F. Cipollo²¹, Maja Pucic-Bakovic²², Jerko Štambuk²², Gordan Lauc^{22,23}, Xu Li²⁴, Peng George Wang²⁴, Andreas Bock²⁵, René Hennig²⁵, Erdmann Rapp^{25,40}, Marybeth Creskey²⁶, Terry D. Cyr²⁶, Miyako Nakano²⁷, Taiki Sugiyama²⁷, Pui-King Amy Leung²⁸, Paweł Link-Lenczowski²⁹, Jolanta Jaworek²⁹, Shuang Yang³⁰, Hui Zhang³⁰, Tim Kelly³¹, Song Klapoetke³¹, Rui Cao^{31,86}, Jin Young Kim³², Hyun Kyoung Lee³², Ju Yeon Lee³², Jong Shin Yoo³², Sa-Rang Kim³³, Soo-Kyung Suh³³, Noortje de Haan³⁴, David Falck³⁴, Guinevere S. M. Lageveen-Kammeijer³⁴, Manfred Wuhrer³⁴, Robert J. Emery³⁵, Radosław P. Kozak³⁵, Li Phing Liew³⁵, Louise Royle³⁵, Paulina A. Urbanowicz³⁵, Nicole H. Packer³⁶, Xiaomin Song³⁶, Arun Everest-Dass^{36,87}, Erika Lattová³⁷, Samanta Cajic³⁸, Kathirvel Alagesan^{39,88}, Daniel Kolarich^{39,88}, Toyin Kasali⁴⁰, Viv Lindo⁴⁰, Yuetian Chen⁴¹, Kudrat Goswami⁴¹, Brian Gau^{42,89}, Ravi Amunugama⁴³, Richard Jones⁴³, Corné J. M. Stroop⁴⁴, Koichi Kato^{45,46}, Hirokazu Yagi⁴⁶, Sachiko Kondo^{46,47}, C. T. Yuen⁴⁸, Akira Harazono⁴⁹, Xiaofeng Shi⁵⁰, Paula E. Magnelli⁵⁰, Brian T. Kasper⁵¹, Lara Mahal^{51,90}, David J. Harvey⁵², Roisin O'Flaherty⁵³, Pauline M. Rudd⁵³, Radka Saldova⁵³, Elizabeth S. Hecht⁵⁴, David C. Muddiman⁵⁴, Jichao Kang⁵⁵, Prachi Bhoskar⁵⁶, Daniele Menard⁵⁶, Andrew Saati⁵⁶, Christine Merle⁵⁷, Steven Mast⁵⁸, Sam Tep⁵⁸, Jennie Truong⁵⁸, Takashi Nishikaze⁵⁹, Sadanori Sekiya⁵⁹, Aaron Shafer⁶⁰, Sohei Funaoka⁶¹, Masaaki Toyoda⁶¹, Peter de Vreugd⁶², Cassie Caron⁶³, Pralima Pradhan⁶³, Niclas Chiang Tan⁶³, Yehia Mechref⁶⁴, Sachin Patil⁶⁵, Jeffrey S. Rohrer⁶⁵, Ranjan Chakrabarti⁶⁶, Disha Dadke^{66,91}, Mohammedazam Lahori^{66,92}, Chunxia Zou^{67,68}, Christopher Cairo^{67,68}, Béla Reiz⁶⁸, Randy M. Whittall⁶⁸, Carlito B. Lebrilla⁶⁹, Lauren Wu⁶⁹, Andras Guttman⁷⁰, Marton Szigeti^{70,71}, Benjamin G. Kremkow⁷², Kelvin H. Lee⁷², Carina Sihlbom⁷³, Barbara Adamczyk⁷⁴, Chunsheng Jin⁷⁴, Niclas G. Karlsson⁷⁴, Jessica Örnros⁷⁴, Göran Larson⁷⁵, Jonas Nilsson⁷⁵, Bernd Meyer⁷⁶, Alena Wiegandt⁷⁶, Emy Komatsu⁷⁷, Helene Perreault⁷⁷, Edward D. Bodnar^{77,4}, Nassur Said⁷⁸, Yannis-Nicolas Francois⁷⁸, Emmanuelle Leize-Wagner⁷⁸, Sandra Maier⁷⁹, Anne Zeck⁷⁹, Albert J. R. Heck⁸⁰, Yang Yang^{80,93}, Rob Haselberg⁸¹, Ying Qing Yu⁸², William Alley^{82,94}, Joseph W. Leone⁸³, Hua Yuan⁸³, and Stephen E. Stein¹

From the ¹Mass Spectrometry Data Center, Biomolecular Measurement Division, Material Measurement Laboratory, National Institute of Standards and Technology, 100 Bureau Drive Gaithersburg, Maryland 20899; ²Chemical Sciences Division, Material Measurement Laboratory, National Institute of Standards and Technology, 100 Bureau Drive Gaithersburg, Maryland 20899; ³Analytical Development, Agensys, Inc., 1800 Steward Street Santa Monica, California 90404; ⁴Agilent Technologies, Inc., 5301 Stevens Creek Blvd Santa Clara, California 95051; ⁵Astellas Pharma, 5-2-3 Tokodai, Tsukuba, Ibaraki, 300-2698, Japan; ⁶Analytical Development, Biogen, 14 Cambridge Center Cambridge, Massachusetts 02142; ⁷Bioprocessing Technology Institute, 20 Biopolis Way, Level 3 Singapore 138668; ⁸Department of Chemistry, University of Natural Resources and Life Science, Vienna (BOKU), Muthgasse 18 1190 Wien, Austria; ⁹Center for Biomedical Mass Spectrometry, Boston University School of Medicine, 670 Albany Street Boston, Massachusetts 02118; ¹⁰Bruker Daltonik GmbH, Fahrenheitstr. 4, 28359 Bremen, Germany; ¹¹Department of Life Sciences & Technology, Beuth Hochschule für Technik Berlin, Seestraße 64, 13347 Berlin, Germany; ¹²Centre d'Immunologie Pierre Fabre, 5 Avenue Napoléon III, BP 60497, 74164 St Julien-en-Genevois, France; ¹³Department of Urology, Boston Children's Hospital, 300 Longwood Avenue Boston Massachusetts 02115; ¹⁴Institute of Biophysics, Chinese Academy of Sciences, 15 Da Tun Road, Chaoyang District, Beijing 100101 China; ¹⁵Key Lab of Intelligent Information Processing, Institute of Computing Technology, Chinese Academy of Sciences, 15 Da Tun Road, Chaoyang District, Beijing 100101 China; ¹⁶Graduate School of Analytical Science and Technology, Chungnam National University, Gung-dong 220, Yuseong-Gu, Daejeon 305-764, Korea (South); ¹⁷CICbiomaGUNE, Paseo Miramon 182, 20009 San Sebastian, Spain; ¹⁸Analytical Services, Complex Carbohydrate Research Center, University of Georgia, 315 Riverbend Road Athens, Georgia 30602; ¹⁹BioCMC Solutions (Large Molecules), Covance Laboratories Limited, Otley Road, Harrogate, North Yorks HG3 1PY, United Kingdom; ²⁰Biochemistry Method Development & Validation, Eurofins Lancaster Laboratories, Inc., 2425 New Holland Pike Lancaster, Pennsylvania 17601; ²¹Center for Biologics Evaluation and Research, Food and Drug Administration, 10903 New Hampshire

Avenue, Silver Spring, Maryland 20993; ²²Glycoscience Research Laboratory, Genos, Borongajska cesta 83h, 10 000 Zagreb, Croatia; ²³Faculty of Pharmacy and Biochemistry, University of Zagreb, A. Kovačića 1, 10 000 Zagreb, Croatia; ²⁴Department of Chemistry, Georgia State University, 100 Piedmont Avenue, Atlanta, Georgia 30303; ²⁵glyXera GmbH, Brennekestrasse 20 * ZENIT / 39120 Magdeburg, Germany; ²⁶Health Products and Foods Branch, Health Canada, AL 2201E, 251 Sir Frederick Banting Driveway, Ottawa, Ontario, K1A 0K9 Canada; ²⁷Graduate School of Advanced Sciences of Matter, Hiroshima University, 1-3-1 Kagamiyama Higashi-Hiroshima 739-8530 Japan; ²⁸ImmunoGen, 830 Winter Street, Waltham, Massachusetts 02451; ²⁹Department of Medical Physiology, Jagiellonian University Medical College, ul. Michalowskiego 12, 31-126 Krakow, Poland; ³⁰Department of Pathology, Johns Hopkins University, 400 N. Broadway Street Baltimore, Maryland 21287; ³¹Mass Spec Core Facility, KBI Biopharma, 1101 Hamlin Road Durham, North Carolina 27704; ³²Division of Mass Spectrometry, Korea Basic Science Institute, 162 YeonGuDanji-Ro, Ochang-eup, Cheongwon-gu, Cheongju Chungbuk, 363-883 Korea (South); ³³Advanced Therapy Products Research Division, Korea National Institute of Food and Drug Safety, 187 Osongsaengmyeong 2-ro Osong-eup, Heungdeok-gu, Cheongju-si, Chungcheongbuk-do, 363-700, Korea (South); ³⁴Center for Proteomics and Metabolomics, Leiden University Medical Center, P.O. Box 9600, 2300 RC Leiden, The Netherlands; ³⁵Ludger Limited, Culham Science Centre, Abingdon, Oxfordshire, OX14 3EB, United Kingdom; ³⁶Biomolecular Discovery and Design Research Centre and ARC Centre of Excellence for Nanoscale BioPhotonics (CNBP), Macquarie University, North Ryde, Australia; ³⁷Proteomics, Central European Institute for Technology, Masaryk University, Kamenice 5, A26, 625 00 BRNO, Czech Republic; ³⁸Max Planck Institute for Dynamics of Complex Technical Systems, Sandtorstrasse 1, 39106 Magdeburg, Germany; ³⁹Department of Biomolecular Sciences, Max Planck Institute of Colloids and Interfaces, 14424 Potsdam, Germany; ⁴⁰AstraZeneca, Granta Park, Cambridgeshire, CB21 6GH United Kingdom; ⁴¹Merck, 2015 Galloping Hill Rd, Kenilworth, New Jersey 07033; ⁴²Analytical R&D, MilliporeSigma, 2909 Laclede Ave. St. Louis, Missouri 63103; ⁴³MS Bioworks, LLC, 3950 Varsity Drive Ann Arbor, Michigan 48108; ⁴⁴MSD, Molenstraat 110, 5342 CC Oss, The Netherlands; ⁴⁵Exploratory Research Center on Life and Living Systems (ExCELLS), National Institutes of Natural Sciences, 5-1 Higashiyama, Myodaiji, Okazaki 444-8787 Japan; ⁴⁶Graduate School of Pharmaceutical Sciences, Nagoya City University, 3-1 Tanabe-dori, Mizuhoku, Nagoya 467-8603 Japan; ⁴⁷Medical & Biological Laboratories Co., Ltd, 2-22-8 Chikusa, Chikusa-ku, Nagoya 464-0858 Japan; ⁴⁸National Institute for Biological Standards and Control, Blanche Lane, South Mimms, Potters Bar, Hertfordshire EN6 3QG United Kingdom; ⁴⁹Division of Biological Chemistry & Biologicals, National Institute of Health Sciences, 1-18-1 Kamiyoga, Setagaya-ku, Tokyo 158-8501 Japan; ⁵⁰New England Biolabs, Inc., 240 County Road, Ipswich, Massachusetts 01938; ⁵¹New York University, 100 Washington Square East New York City, New York 10003; ⁵²Target Discovery Institute, Nuffield Department of Medicine, University of Oxford, Roosevelt Drive, Oxford, OX3 7FZ, United Kingdom; ⁵³GlycoScience Group, The National Institute for Bioprocessing Research and Training, Fosters Avenue, Mount Merrion, Blackrock, Co. Dublin, Ireland; ⁵⁴Department of Chemistry, North Carolina State University, 2620 Yarbrough Drive Raleigh, North Carolina 27695; ⁵⁵Pantheon, 201 College Road East Princeton, New Jersey 08540; ⁵⁶Pfizer Inc., 1 Burt Road Andover, Massachusetts 01810; ⁵⁷Proteodynamics, ZI La Varenne 20-22 rue Henri et Gilberte Goudier 63200 RIOM, France; ⁵⁸ProZyme, Inc., 3832 Bay Center Place Hayward, California 94545; ⁵⁹Koichi Tanaka Mass Spectrometry Research Laboratory, Shimadzu Corporation, 1 Nishinokyo Kuwabara-cho Nakagyo-ku, Kyoto, 604 8511 Japan; ⁶⁰Children's GMP LLC, St. Jude Children's Research Hospital, 262 Danny Thomas Place Memphis, Tennessee 38105; ⁶¹Sumitomo Bakelite Co., Ltd., 1-5 Muromati 1-Chome, Nishiku, Kobe, 651-2241 Japan; ⁶²Synthon Biopharmaceuticals, Microweg 22 P.O. Box 7071, 6503 GN Nijmegen, The Netherlands; ⁶³Takeda Pharmaceuticals International Co., 40 Landsdowne Street Cambridge, Massachusetts 02139; ⁶⁴Department of Chemistry and Biochemistry, Texas Tech University, 2500 Broadway, Lubbock, Texas 79409; ⁶⁵Thermo Fisher Scientific, 1214 Oakmead Parkway Sunnyvale, California 94085; ⁶⁶United States Pharmacopeia India Pvt. Ltd. IKP Knowledge Park, Genome Valley, Shamirpet, Turkapally Village, Medchal District, Hyderabad 500 101 Telangana, India; ⁶⁷Alberta Glycomics Centre, University of Alberta, Edmonton, Alberta T6G 2G2 Canada; ⁶⁸Department of Chemistry, University of Alberta, Edmonton, Alberta T6G 2G2 Canada; ⁶⁹Department of Chemistry, University of California, One Shields Ave, Davis, California 95616; ⁷⁰Horváth Csaba Memorial Laboratory for Bioseparation Sciences, Research Center for Molecular Medicine, Doctoral School of Molecular Medicine, Faculty of Medicine, University of Debrecen, Debrecen, Egyetem ter 1, Hungary; ⁷¹Translational Glycomics Research Group, Research Institute of Biomolecular and Chemical Engineering, University of Pannonia, Veszprem, Egyetem ut 10, Hungary; ⁷²Delaware Biotechnology Institute, University of Delaware, 15 Innovation Way Newark, Delaware 19711; ⁷³Proteomics Core Facility, University of Gothenburg, Medicinaregatan 1G SE 41390 Gothenburg, Sweden; ⁷⁴Department of Medical Biochemistry and Cell Biology, University of Gothenburg, Institute of Biomedicine, Sahlgrenska Academy, Medicinaregatan 9A, Box 440, 405 30, Gothenburg, Sweden; ⁷⁵Department of Clinical Chemistry and Transfusion Medicine, Sahlgrenska Academy at the University of Gothenburg, Bruna Straket 16, 41345 Gothenburg, Sweden; ⁷⁶Department of Chemistry, University of Hamburg, Martin Luther King Pl. 6 20146 Hamburg, Germany; ⁷⁷Department of Chemistry, University of Manitoba, 144 Dysart Road, Winnipeg, Manitoba, Canada R3T 2N2; ⁷⁸Laboratory of Mass Spectrometry of Interactions and Systems, University of Strasbourg, UMR Unistra-CNRS 7140, France; ⁷⁹Natural and Medical Sciences Institute, University of Tübingen, Markwiesenstraße 55, 72770 Reutlingen, Germany; ⁸⁰Bijvoet Center for Biomolecular Research and Utrecht Institute for Pharmaceutical Sciences, Utrecht University, Padualaan 8, 3584 CH Utrecht, The Netherlands; ⁸¹Division of Bioanalytical Chemistry, Amsterdam Institute for Molecules, Medicines and Systems, Vrije Universiteit Amsterdam, de Boelelaan 1085, 1081 HV Amsterdam, The Netherlands; ⁸²Department of Chemistry, Waters Corporation, 34 Maple Street Milford, Massachusetts 01757; ⁸³Zoetis, 333 Portage St. Kalamazoo, Michigan 49007

✉ *Author's Choice*—Final version open access under the terms of the Creative Commons CC-BY license.

Received July 24, 2019, and in revised form, August 26, 2019

Published, MCP Papers in Press, October 7, 2019, DOI 10.1074/mcp.RA119.001677

Glycosylation is a topic of intense current interest in the development of biopharmaceuticals because it is related to drug safety and efficacy. This work describes results of an interlaboratory study on the glycosylation of the Pri-

mary Sample (PS) of NISTmAb, a monoclonal antibody reference material. Seventy-six laboratories from industry, university, research, government, and hospital sectors in Europe, North America, Asia, and Australia submit-

ted a total of 103 reports on glycan distributions. The principal objective of this study was to report and compare results for the full range of analytical methods presently used in the glycosylation analysis of mAbs. Therefore, participation was unrestricted, with laboratories choosing their own measurement techniques. Protein glycosylation was determined in various ways, including at the level of intact mAb, protein fragments, glycopeptides, or released glycans, using a wide variety of methods for derivatization, separation, identification, and quantification. Consequently, the diversity of results was enormous, with the number of glycan compositions identified by each laboratory ranging from 4 to 48. In total, one hundred sixteen glycan compositions were reported, of which 57 compositions could be assigned consensus abundance values. These consensus medians provide community-derived values for NISTmAb PS. Agreement with the consensus medians did not depend on the specific method or laboratory type. The study provides a view of the current state-of-the-art for biologic glycosylation measurement and suggests a clear need for harmonization of glycosylation analysis methods. *Molecular & Cellular Proteomics* 19: 11–30, 2020. DOI: 10.1074/mcp.RA119.001677.

Biologics have recently emerged as critically important drugs from health and economic perspectives. Two-thirds of approved biologics are glycoproteins, *i.e.* proteins containing glycans as post-translational modification. Alteration in glycosylation may impact the safety and efficacy of the drug, including its clearance rates, effector functions, folding, immunogenicity, solubility, and biological activity. In addition to glycomic profiling of new drug candidates, analysis of glycoforms is essential for monitoring production batches of established drugs and comparing biosimilars and biobetters to originator drugs.

This report describes results of a broad interlaboratory study designed to determine both the level of variability in current measurement methods as well as to support consensus measurement values for a reference material. Participation was open to all laboratories, regardless of experience or preferred analytical method. Because specific methods selected by participating laboratories varied greatly, as did their degree of expertise, this study was not designed to determine “best” methods, but to provide a “snapshot” of the currently used methods for biologic glycosylation measurement. Unfortunately, this diversity in experience and objective prevented a deeper analysis of the variability of results, with some highly experienced labs using well-developed standard operating procedures, and with others using novel approaches or exploiting their unique capabilities. The study rationale and design are presented in detail in [supplementary Discussion S1](#).

Glycosylation analysis is inherently challenging because, unlike amino acids in proteins which are encoded by the genome, sequential addition of monosaccharide residues is not template-driven. It is rather dictated by competing enzymatic activities, leading to heterogeneity. Even at the same

site of glycosylation, diverse glycans with different linkages, number of antenna, and monosaccharide compositions are possible, giving rise to challenges in separation (chromatography) and isomerization (mass spectrometry).

A common glycosylation in mAbs is *N*-glycosylation where the glycans are linked to the nitrogen of the Asn residue of the protein with a consensus sequence Asn-X-Ser/Thr or, more rarely, Asn-X-Cys where X is any amino acid except proline. Moreover, *N*-glycans have a common five-membered trimannosyl chitobiose core, Man α 1–6(Man α 1–3)Man β 1–4GlcNAc β 1–4GlcNAc β 1-Asn-X-Ser/Thr. The highly complex nature of *N*-glycosylation analysis has given rise to a proliferation of different methods (1–14). Currently, *N*-glycosylation is examined at the level of intact proteins, protein fragments, peptides, glycans, or monosaccharides. Analytes are then analyzed by mass spectrometry (MS)¹ (1); liquid chromatography (LC) with fluorescence detection (FD)(2) and/or MS detection; capillary electrophoresis (CE) with MS detection (3); CE-laser-induced fluorescence detection (CE-LIF); high performance anion exchange chromatography with pulsed amperometric detection (HPAEC-PAD); nuclear magnetic resonance (NMR) spectroscopy; or a combination of these techniques (4).

One popular approach is the release of glycans where *N*-glycans are cleaved from proteins using Peptide-N-Glycosidase F (PNGase F), which hydrolyzes the side-chain amide group of the glycosylated asparagine. Before analysis, glycans may be subjected to permethylation, reduction, or fluorophore labeling to increase sensitivity and specificity. Structure elucidation and isomer separation is possible using the glycan-release approach, but it lacks information on the site of glycosylation because analysis is performed after the glycans are cleaved from the protein.

¹ The abbreviations used are: MS, generic mass spectrometry or first stage mass spectrometry; AA, aminobenzoic acid; AB, aminobenzamide; APTS, 9-aminopyrene-1,4–6-trisulfonate; C4, C4 (butyl) desalting column; C8, C8 (octyl) desalting column; CE, capillary electrophoresis; CFG, Consortium for Functional Glycomics; DI, direct infusion; Exo, exoglycosidase; Fab, antigen-binding fragment of a monoclonal antibody; Fc, crystallizable fragment of a monoclonal antibody; FD, fluorescence detection; GU, glucose units; HILIC, hydrophilic interaction liquid chromatography; HPAEC-PAD, high performance anion exchange chromatography with pulsed amperometric detection; IC, ion chromatography; IdeS, immunoglobulin G-degrading enzyme; LC, liquid chromatography; LIF, laser-induced fluorescence detection; LoR, limit of reporting; mAb, monoclonal antibody; MALDI, matrix-assisted laser desorption/ionization; MRV, minimum reported value; MS/MS, tandem mass spectrometry; MSn, nth stage MS; MT, migration time; ND, not detected; NISTIR, NIST internal report; NMR, nuclear magnetic resonance; NQ, not quantified; PA, peak area/integration; PGC, porous graphitized carbon; PH, peak height; PNGase F, Peptide-N-Glycosidase F; PS, primary sample; RP, reversed-phase; RT, retention time; SEC, size-exclusion chromatography; UOXF, Oxford Glycobiology Institute; xCGE, multiplexed capillary gel electrophoresis.

Analysis of glycopeptides can provide glycosylation site information along with glycan compositions. In this approach, mAbs are digested with proteases such as trypsin (and less commonly used enzymes such as chymotrypsin, LysC, LysN, AspN, GluC, or ArgC) to produce peptides and glycopeptides that are then typically analyzed using MALDI-MS and LC-MS(/MS) methods (and less commonly CE-MS(/MS) methods (15)). The peptide attached to the glycoform gives information on the site of glycosylation. Potential disadvantages include challenges in differentiating isomers and suppression of glycopeptide ions because of peptide ions at the precursor (MS1) level. The latter could be alleviated by (two-dimensional) LC or enrichment methods (16).

Middle-down and top-down approaches characterize the glycosylation by analyzing protein fragments and intact proteins, respectively. In the middle-down approach, mAbs are treated with immunoglobulin G-degrading enzyme (IdeS), an endopeptidase that cleaves heavy chains below the hinge region, resulting in antigen-binding (Fab) and crystallizable (Fc) fragments. These large fragments are then usually analyzed by MS. Protein fragments have a lower molecular mass than the intact protein and could be better resolved in MS compared with the analysis of intact mAbs in the top-down approach. Compared with other techniques, the top-down approach provides the advantage that little-to-no sample preparation steps are needed before the analysis. Typically, only desalting of the intact mAb is necessary, which is normally performed with a desalting column (e.g. C4, C8) followed by the analysis with MS. However, because top-down and middle-down analyses often result in higher masses, fewer glycan compositions can be distinguished because of lack of resolution compared with other MS-based methods.

The diversity of these methods presents a major challenge in the interpretation of *N*-glycosylation measurements. Unfortunately, only a few multi-laboratory studies have been reported assessing the performance of the different approaches (17–21). In two studies by the Human Proteome Organization (HUPO), relative abundances of *N*-glycans (in transferrin and IgG) (17) and O-glycans (in IgA1) (18) were analyzed by 20 and 15 laboratories, respectively. They observed that MS-based methods are efficient in identifying and quantifying glycans. However, there were no participants from biopharmaceutical companies.

Here we present the design and results of our interlaboratory study of two materials: primary sample (PS) 8670, commonly referred to as NISTmAb (22), and mod-NISTmAb, a material derived from PS 8670 by modification with galactosidase. PS 8670 is the in-house standard for NIST Reference Material 8671 (23). The rationale for the use of these samples is presented in [supplementary Discussion S2](#). This report is based on 103 reports submitted by 76 laboratories worldwide. It builds on the NIST internal report (NISTIR) 8186 (24).

This interlaboratory study had two goals. The first goal was to determine measurement variability in identifying and quan-

tifying *N*-glycosylation in monoclonal antibodies across laboratories in the glycomics and glycoproteomics community, including laboratories from biopharmaceutical companies and universities. The second goal was to aid in determining community-based consensus medians for the glycosylation of the PS. The community's consensus values for NISTmAb PS 8670 glycosylation, robustly estimated as medians, represent an unparalleled diversity of approaches applied to the same material and serve as a seminal baseline for comparing glycoanalytical strategies.

Finally, we note two quite different levels of identification - by composition and by structure. Compositions are determined by high mass accuracy mass spectrometry, whereas confident isomer identification often requires reference materials or chromatographic retention matching.

EXPERIMENTAL PROCEDURES

Monoclonal Antibody Sample Preparation—Two materials were used in the study, (1 the Primary sample (PS) for NIST Reference Material 8671, NISTmAb, Humanized IgG1 κ Monoclonal Antibody produced in NS0 cells, and (2 a material derived from the PS by treatment with galactosidase, termed “mod-NISTmAb.”

NISTmAb was obtained as a bulk substance prepared using mammalian cell culture and downstream processing. It has one *N*-glycosylation site at the Fc region of the antibody. mod-NISTmAb was prepared by subjecting a portion of NISTmAb to β -1,4-galactosidase (New England Biolabs, Ipswich, MA) and then adding the resulting solution back to the original NISTmAb (30:70 by mass).

Study Execution—The study was conducted in two stages: Stage 1 involved nine selected laboratories who volunteered to assist in final study design; Stage 2 was widely advertised and open to all laboratories. Two samples were shipped to laboratories on June 2015 and August–September 2015 for Stage 1 and Stage 2, respectively. Laboratories received three vials consisting of two blinded monoclonal antibody samples and one buffer solution in 1.0 ml screw-top tubes (Matrix™ Thermo Fisher Scientific, #3740) as follows:

- Sample A: white label, frozen liquid, 0.4 mg, 100 mg/ml mAb
- Sample B: blue label, frozen liquid, 0.4 mg, 100 mg/ml mAb
- Buffer: yellow label, frozen liquid, 1 ml, 25 mmol/L L-Histidine, pH 6.0

Laboratories were informed that both samples are humanized IgG1 κ expressed in murine suspension culture and that the samples are “drug-like substances” not for human use. The buffer solution was provided as a diluent.

Participants used their method of choice to determine the glycan content in the two samples. Participants were requested to provide measurement results using NIST-provided data and method reporting templates (24) by July 30, 2015 (Stage 1) and November 6, 2015 (Stage 2). Some laboratories submitted more than one report; each report was assigned a confidential laboratory number (and was treated as a separate laboratory). Participants could enter other glycans or methods in the template; no other post-translational modifications, e.g. lysine glycation, could be reported.

Data were analyzed as reported, *i.e.* no normalization, using a variety of robust statistical analysis techniques to assess measurement reproducibility and to characterize glycan distributions. Results were compiled and evaluated for determination of community's consensus medians, within-laboratory precision, and concordance within the laboratories. A technical summary (24) of reported and derived values from all laboratories, a table of all identified glycans, and an

individualized graphical analysis of their performance for the exercise were sent to the participating laboratories on June 2, 2017.

Shipping—Package shipped to each laboratory consisted of three vials (Sample A, Sample B, and L-Histidine buffer solution) and a welcome packet (24). The three vials were stowed in a rolled, self-sealing bubble wrap bag and placed in an insulated box filled with dry ice. The welcome packet consisted of a cover letter; instructions; packing list/shipment receipt confirmation form; and data, method, and comment reporting sheets. These documents were enclosed in a waterproof sleeve and placed at the top of the shipping box, between the cardboard covering and the foam insulation. A soft copy of the welcome packet was emailed to participants as one spreadsheet workbook with multiple worksheets. Participants were requested to return the filled shipment receipt confirmation form as soon as they received the shipped package.

Analysis Methods—Each laboratory was asked to perform glycosylation analysis of the two samples in triplicate using their own method(s), as summarized in Table I. Briefly, glycans were cleaved by incubating mAbs with PNGase F (74 reports), trypsin/PNGase F (1 report), and Pepsin/PNGase A (1 report). Cleaved glycans were derivatized using fluorescent (54 reports) or non-fluorescent (22 reports) methods. Next, glycans were separated with chromatography (CE (5 reports), HILIC (46 reports), IC (1 report), PGC (6 reports), RP (6 reports)) or without chromatography (12 reports), and then identified by various analytical methods.

Glycopeptides were cleaved from mAbs using trypsin (21 reports). Cleaved glycopeptides were left underivatized (18 reports) or subjected to dimethylamidation (1 report), Ludger V-tag (1 report) or reduction (1 report). Glycopeptide separation was performed using RP (17 reports), HILIC (1 report) or CE (1 report) chromatography. MS (20 reports) or FD (1 report) was used for analysis.

To obtain protein fragments, Ides (2 reports) or Endo-S (1 report) enzymes were added to mAbs. No derivatization was performed before chromatography using CE (1 report), RP (1 report), or SEC (1 report). Analysis was performed using LC-MS. Intact mAbs were analyzed with (1 report) or without PNGase F (1 report) and with (1 report) or without RP (1 report) chromatography. Intact mAbs analysis was performed using MS.

Laboratories recorded in a provided template a) methods used and b) percent abundances of glycans. Laboratories were asked to create separate reports for each method of analysis. If a value obtained was below their limit of detection or quantification, participants were asked to indicate this result as “ND” (not detected) or “NQ” (not quantified), respectively.

Describing Glycans in the Data Reporting Template

Naming Conventions—Currently, there is no standard way of naming *N*-glycans. Common names using the G0F and Oxford naming conventions were used. In cases where, to the authors’ knowledge, there is no existing name for a glycan, every attempt was made to derive it from naming conventions, summarized below.

Common Name—

- All *N*-glycans have two core GlcNAcs;
- High mannose glycans are named ManX where X is the number of mannoses after the two core GlcNAcs;
- F is fucose, number after F indicates number of fucoses. No number indicates the presence of core fucose only;
- Gx is galactose and x is the number of terminal Gal connected to two GlcNAcs, G0 is a biantennary complex glycan with two terminal GlcNAcs, G1 is a biantennary complex glycan with two GlcNAcs and one terminal Gal, G2 is a biantennary complex glycan with two GlcNAcs and two terminal Gal;
- Gx-yN means y GlcNAc is missing, e.g. G1-N is biantennary complex glycan with one terminal GlcNAc and one terminal Gal;

- S (NeuAc) or (NeuGc) is sialic acid. (NeuAc) or (NeuGc) indicates type of sialic acid;
- Number in parenthesis indicates linkage: F(6) or S(6) means a α 1–6-linked core fucose or α 2,6-linked sialic acid, respectively;
- Number in square brackets is the location of residue, e.g. (3) or (6) indicates that the residue is in the α 1,3 or α 1,6 mannose arm, respectively; and
- xaGal is α -1,3-linked galactose, x is the number of residues; **Oxford Name**—
 - All *N*-glycans have two core GlcNAcs;
 - F at the start of the abbreviation indicates a core fucose, (6) after the F indicates that the fucose is α 1–6 linked to the inner GlcNAc;
 - Mx, number (x) of mannose on core GlcNAcs;
 - Ax, number of antenna (GlcNAc) on trimannosyl core; A2, biantennary with GlcNAcs as β 1–2 linked; A3, triantennary with a GlcNAc linked β 1–2 to both mannose and the third GlcNAc linked β 1–4 to the α 1–3 linked mannose; A3', triantennary with a GlcNAc linked β 1–2 to both mannose and the third GlcNAc linked β 1–6 to the α 1–6 linked mannose; A4, GlcNAcs linked as A3 with additional GlcNAc β 1–6 linked to α 1–6 mannose;
 - B, bisecting GlcNAc linked β 1–4 to α 1–3 mannose;
 - Gx, number (x) of linked galactose on antenna, (4) or (3) after the G indicates that the Gal is β 1–4 or β 1–3 linked; [3]G1 and [6]G1 indicates that the galactose is on the antenna of the α 1–3 or α 1–6 mannose;
 - Gax, number (x) of linked alpha galactose on antenna; and
 - Sx, number (x) of sialic acids linked to galactose; the numbers 3 or 6 in parentheses after S indicate whether the sialic acid is in an α 2–3 or α 2–6 linkage.

Monosaccharide Composition—The monosaccharide composition is inside a square bracket. Small letters were used to avoid confusion with elements (hydrogen, nitrogen, fluorine, etc.): h = hexose, n = *N*-acetylhexosamine, f = deoxyhexose (e.g. fucose), a = NeuAc, g = NeuGc. Number after the letter denotes the number of residues. For example, [h6n4f1a1] has 6 hexoses, 4 *N*-acetylhexosamine, 1 fucose, 1 NeuAc. For sulfonated glycans, S = sulfur.

Structure Conventions—Two structure notations were used: the Consortium for Functional Glycomics (CFG) (25) and the Oxford Glycobiology Institute (UOXF) notations. Glycoworkbench 2.1 (Eurocarb) (26) was used to draw the structures. The differences are in the monosaccharide residue representations (for example, NeuAc is purple diamond in CFG but purple star in UOXF notations) and linkage notations (angle represents linkage in UOXF). A revised CFG format has been introduced but it was not used in this reporting template.

Calculations for Derived Attributes of NISTmAb—Calculations for the glycan attributes were estimated from the median results and based on an earlier reported method (27):

- Galactosylation = Sum of (% abundance) × (galactosylation factor) for all glycans with terminal galactose where the factor is the fraction of antennae that are galactosylated. For example, the galactosylation factor of G0F is 0, G1F is 0.5, G2F is 1.
 - α Galactosylation = As above but for α galactosylation only
- Sialylation = Sum of (% abundance) × (sialylation factor) for all glycans with NeuAc or NeuGc sialic acid where the factor is the fraction of antennae that are sialylated.
 - NeuAc sialylation = As above, but for NeuAc only
 - NeuGc sialylation = As above, but for NeuGc only
- Fucosylation = Sum of (% abundance) for all glycans with fucose residues.

- Core fucosylation only = Sum of (% abundance) for all glycans with 1 fucose. This calculation assumes that the first fucose is always a core fucose.
- Difucosylation = Sum of (% abundance) for all glycans with 2 fucose residues.
- Bisecting GlcNAc = Sum of (% abundance) for all glycans with bisecting GlcNAc.
- High mannose level = Sum of (% abundance) for all high-mannose glycans.
- Sialic Acid/Galactose ratio = Sialylation/Galactosylation.

RESULTS

Overview—Because the participating labs selected their own methods of analysis and these methods can differ in many ways, merits and drawbacks of the methods can only be discussed in general terms. There are two principal factors distinguishing output: the number of different glycans reported and how the structures of those glycans were determined. High mass accuracy mass spectrometry is currently capable of determining compositions of glycans over a wide range of abundance and therefore can yield the largest number of different glycans, it is limited in isomer identification because spectra of different isomers are often indistinguishable and do not generally contain sufficient information for full structure determination. For example, glycopeptide fragmentation appears incapable of yielding complete glycan structural information. On the other hand, defined structures may be determined using chromatographic methods, coupled with standard materials and labeling or use of enzymes (exoglycosidases) capable to removing selected outer glycans. However, only a limited number of standard glycans are available and enzymatic methods are of limited use in complex glycan mixtures. In the absence of direct structural information, structures are generally represented based on biological inference, which are, in effect, informed guesses.

Sample preparation methods, ranging from enzymatic glycan release and labeling to protein digestion constitute a major source of variation. The effectiveness of these methods depends as much on laboratory skill than specific method and are, in effect, a hidden source of variation in these studies.

Differences in the objectives of the labs is a major contributor to the diversity of methods and results. Probably the most critical measurements are made by biopharmaceutical companies who rely on glycan determinations for both product quality and government approval. Consequently, they generally use well-established, conservative methods that often involve several targeted, derivatized glycans with precisely defined established chromatographic methods. Further, they may limit their number of analytes to only the major glycans considered. Other groups, such as instrument companies and some academic institutions seek to maximize the number of glycans identified, which generally sacrifices structural information. Other labs made these measurements for various educational and internal quality control purposes

whereas others wish to develop or demonstrate new methods of analysis.

Demographics of Laboratories—One hundred eighteen laboratories responded to the call for participation. However, because of challenges with timing, personnel, shipping (bad weather, customs delay), legal, technical (instrument, freezer malfunction), and other issues, several laboratories had to drop out of the study. Samples were sent to 90 laboratories; 76 laboratories submitted 103 reports. [Supplemental Fig. S1A](#) shows a map of the participating laboratories from Europe (42%) and North America (38%), Asia (18%), and Australia (2%). Laboratories were primarily from the industry sector, with almost half of these laboratories from biopharmaceutical companies, as shown in [supplemental Fig. S1B](#).

Glycosylation Analysis Methods Used by Participating Laboratories—Table I summarizes the glycosylation analysis methods used by laboratories in this study. Out of 103 reports, 74% analyzed released glycans, 20% used glycopeptides, and 6% used intact protein and protein fragments. Fluorescently-labeled glycans were commonly analyzed by LC-FD or LC-FD-MS methods except for APTS-labeled glycans, which were analyzed by CE-LIF exclusively. Reduced and permethylated glycans were analyzed solely by MS (using MALDI, direct infusion- (DI) and LC-electrospray ionization techniques). Hydrophilic interaction liquid chromatography (HILIC) is the commonly used chromatographic method for glycans labeled with 2-AB, glycosylamine, and procainamide fluorophores whereas porous graphitized carbon (PGC) was used for reduced glycans.

In Table I, glycopeptides were typically analyzed without derivatization (18 out of 21 reports) by reversed-phase LC-MS (16 out of 21 reports). MS techniques (MS mass, MS/MS fragmentation data, or a combination) were frequently used for identification whereas MS peak area, MS intensity, and summation of isotope peaks were used for quantification. [Supplemental Fig. S2](#) shows an example of fragmentation data of glycopeptides using LC-MS/MS analysis. HCD spectra at 40% normalized collision energy ([supplemental Fig. S2A](#)) shows the peptide backbone ([supplemental Fig. S2B](#)), oxonium ions ([supplemental Figs. S2C and S2J](#)), and glycan fragmentation ([supplemental Fig. S2D–S2I](#)). Oxonium ions have been used to screen for the presence of glycopeptides and glycan motifs (28,29). The laboratory used oxonium ions from a HexNAc (m/z 168.07, m/z 186.08, and m/z 204.09) to screen for the presence of glycopeptides ([supplemental Fig. S2C](#)). Presence of m/z 512.20 oxonium ion is specific for antenna fucosylation (30) ([supplemental Fig. S2E](#)); m/z 290.09 and m/z 308.10 oxonium ions are specific for NeuGc residues ([supplemental Fig. S2F](#)); and m/z 528.19 is indicative of a trisaccharide having 2 hexoses and 1 *N*-acetylhexosamine., e.g. Gal-Gal-GlcNAc ([supplemental Fig. S2G and S2H](#)). For high mannose glycans, the absence of GlcNAc antenna could result in hexose oxonium ions m/z 127.04, m/z 145.05, and m/z 163.06 ([supplemental Fig. S2J](#)). The

TABLE I
Overview of analytical techniques for mAb glycosylation analysis used in this interlaboratory study

Analyte	Derivatization	Analytical method	Chromatography	Identification	Quantification	
Glycan (76)	2-AB labeling (20)	LC-FD (15)	HILIC (19)	MS mass (5)	PA (19)	
		LC-FD-MS (4)	RP (1)	RT std (8)	MS int (1)	
		LC-MS (1)		RT GU (5)		
	Glycosylamine labeling (18); InstantPC InstantAB Rapifluor	LC-FD (6)		HILIC (17)	RT GU & exo (2)	PA (16)
			LC-FD-MS (8)	RP (1)	MS mass (8)	MS int (2)
		LC-MS (4)			MS/MS (2)	
					RT std (6)	
	APTS labeling (6)	CE-LIF (6)		CE (5)	MS mass & RT GU (1)	PA (4)
				None (1)	exo (2)	PH (2)
	Permethylation (6)	MALDI-MS (4)		None (4)	MT std (1)	MS int (4)
DI-MS (1)			RP (2)	MS mass (4)	PA (2)	
Procainamide (6)	LC-MS (1)			MS/MS (1)		
		LC-FD-MS (5)	HILIC (6)	MSh (1)	PA (6)	
	LC-FD (1)			MS mass (3)		
Reduction (5)	LC-MS (5)		PGC (5)	RT GU (1)	MS int (2)	
				All + MS/MS & exo (1)	PA (3)	
None (4)	LC-MS (2)		HILIC (1)	MS mass (2)	PA (2)	
		MALDI-MS (1)	IC (1)	MS/MS (2)	MS int (1)	
Glycopeptide (21)	Ethyl esterification (3)	HPAEC-PAD (1)	None (1)	MS mass & MS/MS (1)	sum isotope pks (1)	
		MALDI-MS (3)	PGC (1)	RI (1)		
	2-AA labeling (2)	LC-FD (1)	None (3)	MS mass (3)		sum isotope pks (2)
		MALDI-MS (1)	HILIC (1)	MS/MS (1)	isotopic dil. (1)	
	2-AA & permethylation (1)	LC-MS (1)	None (1)	HILIC (1)	PA (1)	PA (1)
		LC-FD,MS (1)	HILIC (1)	None (1)	RT std (1)	MS int (1)
	4-AA labeling (1)	LC-FD,MS (1)	RP (1)	MS mass & RT std (1)	PA (1)	PA (1)
		INLIGHT (1)	HILIC (1)	RT std (1)	PA (1)	PA (1)
	Phenyhydrazine (1)	MALDI-MS (1)	RP (1)	MS mass & MS/MS (1)	PA (1)	MS int (1)
		p-toluidine (1)	None (1)	MS/MS (1)	MS (1)	MS int (1)
None (18)	LC-MS (16)	None (1)	MS/MS (9)	MS/MS (1)	PA (12)	
	CE-MS (1)	RP (17)	MS (7)	MS (7)	MS int (4)	
Dimethylamidation (1)	MALDI-MS (1)	None (1)	None (1)	MS mass & MS/MS (2)	sum isotope pks (2)	
	Ludger V-tag (1)	MALDI-MS (1)	None (1)	MS mass (1)	sum isotope pks (1)	
Reduction (1)	LC-FD (1)	HILIC (1)	HILIC (1)	RT std (1)	PA (1)	
	None (3)	CE-MS (1)	CE (1)	MS/MS (1)	MS int (1)	
Protein fragment (3)	LC-MS (3)	LC-MS (3)	CE (1)	MS mass (3)	MS int (3)	
			RP (1)			
Intact protein (2)	None (2)	LC-MS (1)	SEC (1)	MS mass (2)	MS int (2)	
	None (1)	DI-MS (1)	RP (1)			
Intact, fragments, glycans (1)	None (1)	LC-MS (1)	None (1)	MS mass, MS/MS & exo (1)	MS int (1)	
			PGC (1)			

Number in parenthesis indicates number of laboratories.

Additional abbreviations: std = standard; int = intensity; dil = dilution; sum = summation; pks = peaks.

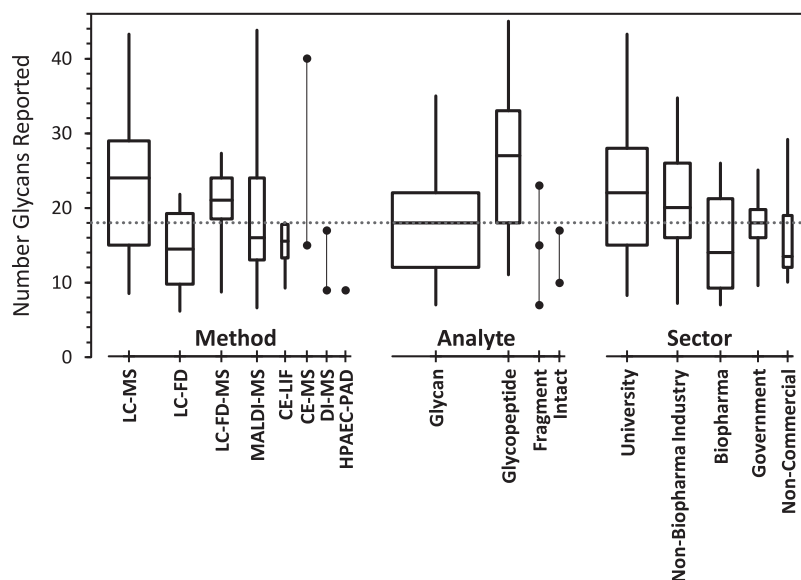


FIG. 1. **Number of unique glycan compositions reported, grouped by method, analyte, and sector.** The boxes span the central 50% of reported values, 25% to 75%; the whiskers span the central 90%, 5% to 95%; the central line marks the median, 50%. Box widths are proportional to the number of reports. Groups within each category are presented in order of decreasing number of reports. Solid circles represent individual results within categories of fewer than six reports. The dotted line marks the median number of compositions reported in the 103 reports provided by 76 laboratories.

laboratory screened glycopeptides for high-mannose glycans using m/z 163.06.

Intact proteins and protein fragments were analyzed mostly using LC-MS, as shown in Table I. Separation was performed by CE, RP, SEC, or PGC; identification was performed by MS mass or MS/MS fragmentation with exoglycosidases; and quantification by MS intensity.

Supplemental Table S1 lists the analytical approaches by laboratory sector. Here, a disparity could be observed in the choice of methods. Biopharmaceutical company laboratories preferred the well-established method involving fluorophore-labeled glycans for their analysis (19 out of 21 laboratories); whereas two used glycopeptide analyses. University laboratories, however, primarily used either more generic mass spectrometry-based methods of glycopeptide analysis (14 out of 32 laboratories) or non-fluorescent glycan (12 out of 32 laboratories) approaches. Protein fragment ($n = 3$) and intact protein ($n = 2$) techniques were used to demonstrate the technology - they are not listed in supplemental Table S1 to protect laboratory anonymity.

Glycan Identification—The data reporting template (24) included 54 glycan compositions for 68 glycan structures, however an additional 62 compositions and 71 other structures were reported by the participating laboratories. A total of 116 compositions and 139 structures were identified. Supplemental Table S2 lists the glycan compositions and isomers identified by laboratories in this study (24). Supplemental Table S3 lists all the quantified and derived values for NISTmAb and mod-NISTmAb for glycan compositions and glycan structures (24). Independent of this study, glycosylation of NIST-

mAb was previously characterized by three laboratories using HILIC with fluorescence detection of 2-AB-labeled *N*-glycans and collectively found 24 glycan peaks (28, 31). Another work using 1D- and 2D-LC-MS/MS for the analysis of glycopeptides found 60 glycan masses on NISTmAb (16).

The number of glycan compositions reported by each laboratory ranged from 4 to 48. Most reports listed about the same number of glycan compositions for each of the two samples. Fig. 1 summarizes the number of unique glycan compositions reported for NISTmAb and/or mod-NISTmAb samples as a function of the laboratory's analytical method, analyte, and organizational type. On average, more compositions were reported by laboratories (1 using MS-based methods, 2 analyzing glycopeptides, and 3 that were university-based. However, the wide range in the number of compositions reported within most of the groups suggests that the technology is not the major determinant.

Fig. 2 summarizes the proportion of compositions that were reported with isomeric information as a function of identification method. On the average, laboratories that used exoglycosidases reported the greatest number of isomeric information, followed by retention times, then by FD, then by MS/MS. Surprisingly, about one-fourth of the data sets that nominally used accurate mass (MS) identification identified some isomers.

Glycan Quantification—Laboratories were asked to report quantitative values for each glycoform as proportions relative to the sum of all glycoforms detected. Table II lists the consensus median abundances of glycan compositions and gly-

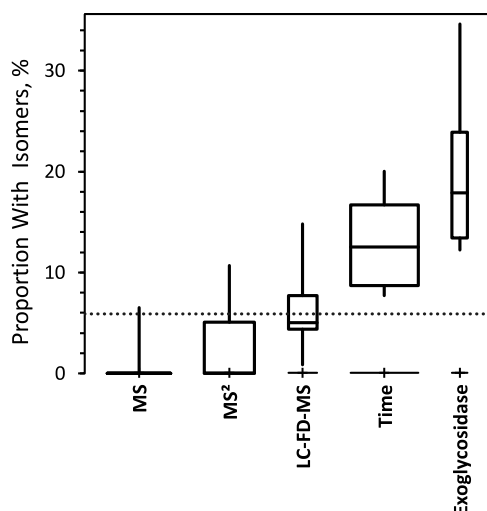


FIG. 2. Proportion of glycan compositions reported as isomers. The boxes span the central 50% of reported values, 25% to 75%; the whiskers span the central 90%, 5% to 95%; the central line marks the median, 50%. Box widths are proportional to the number of reports. Categories are presented in order of increasing median proportion. The dotted line marks the median proportion of compositions reported as isomers.

can structures on NISTmAb that were reported at least six times. The three compositions [h3n4f1], [h4n4f1] and [h5n4f1] are the most commonly reported and the most abundant compositions; together, they account for more than 85% of the total signal intensity. Although the normalization factors (the sum of signals) for the different data sets are not based on the same compositions nor the same number of compositions, the dominance of [h3n4f1] and [h4n4f1] ensures that the reported proportions are comparable across data sets. However, the differences among the normalization factors are a source of variability. Other approaches such as normalizing to the most abundant few glycoforms could be pursued in future studies.

Laboratories were asked to report their results as percent abundances normalized such that they summed to 100% per sample. [Supplemental Fig. S3](#) shows a histogram of the sum of the unique glycan composition values for NISTmAb and mod-NISTmAb as reported by the laboratories ($n = 206$, two samples per laboratory). Although results in most data sets summed to 100%, the sums ranged from 88% to 122%. Some laboratories assigned percent abundances to unidentified glycans; the sum of these values was reported as one entry called “Unknown Glycans” and added to the abundance sum for that sample.

The number of replicate values per reported composition or structure per sample ranged from one to nine. The nature of these values ranged from purely technical replicates (multiple measurements of the same preparation) to process replicates (single measurements of multiple independent preparations). In all cases where two or more replicate values were reported,

the values were summarized as their mean and standard deviation (SD).

Some data sets reported replicate values equal to zero, not detected (ND), and not quantified (NQ). These values can be ignored when there are no quantitative values in a set of replicates but cause numerical instability when there is at least one quantitative value in the set. Various options were explored for handling these situations in a uniform manner including: treating non-numerical results as zero, replacing zeros and non-numerical values with the data set’s minimum reported value (MRV, the smallest reported numerical value of a data set), or replacing them with the data set’s limit of reporting (LoR, the extrapolated smallest value of a data set). Replacement with the LoR provided slightly smaller SDs than replacement by the MRV. [Supplemental Fig. S4](#) shows the LoR for one set of results. Gray lines are traces of the unique non-zero values reported in each set of results, where the numbers are ordered by decreasing value. If the true amounts of the minor glycans are randomly distributed and all results reflect the same level of analytical effort, a best-fit line to the right-tail of the trace estimates the LoR for that set. As shown in [supplemental Fig. S5](#), most of the LoRs agree well for MRVs above about 0.05%. Below this value, many of the sets contain a few values many-fold smaller than their LoR. This may reflect special interest in selected glycan components rather than reporting issues with the less-abundant glycans. The LoR values in the data set may be more representative of the analytical sensitivity of a measurement system than is the MRV.

Derived Attribute Quantities in NISTmAb—Table III shows the degree of galactosylation, sialylation, fucosylation; levels of bisecting GlcNAc and high-mannose; and the sialic acid/galactose ratio in NISTmAb. These values are estimated from the consensus median values of the glycan compositions. Calculations are based on previous works by Wuhrer (27) and are designed to reflect biosynthetic pathways (32) and, to some extent, enzyme activity. In addition, these glycosylation traits relate to differences in effector functions of monoclonal antibodies and circulation half-time for other therapeutic glycoproteins.

All antennae were assumed to be available for galactosylation by most galactosyltransferases. Antennae galactosylation may be a reasonable proxy for enzyme activity and may therefore reflect regulation of galactosylation process in a biological system. Thus, galactosylation levels were expressed by calculating the number of galactosylated (occupied) antennae divided by the total number of antennae of the specific glycan. Only glycans identified with galactose residues were included in the calculations. For biantennary glycans, the galactosylation levels are 0.0, 0.5, and 1.0 for 0, 1, and 2 galactoses, respectively. For triantennary glycans, the galactosylation levels are 0.0, 0.33, 0.67, and 1.0, reflecting the presence of 0, 1, 2, or 3 galactosylated antennae. For NISTmAb, the median degree of galactosylation is 36.2% with alpha-galactosylation at 3.8%, as shown in Table III.

TABLE II

Community's consensus abundances of glycans in NISTmAb PS 8670 reported by laboratories at least six times. Glycan compositions are arranged by decreasing number of values (N). *Supplementary Table S2* lists all glycan structures and names. *Supplementary Table S3* lists all the community's consensus values

Measurand	Oxford	CFG	Oxford	N	Median	MAD _c	S _{rep}	CV	CV _{rep}
[h4n4f1]				103	38.37	2.28	0.34	6.0	0.9
G1F				103	38.37	2.28	0.34		
G1F[6]	F(6)A2[6]G(4)1			58	28.12	1.37	0.16		
G1F[3]	F(6)A2[3]G(4)1			59	10.18	0.70	0.10		
[h3n4f1]				102	39.10	2.88	0.54	7.4	1.4
G0F	F(6)A2			102	39.09	2.85	0.56		
[h5n4f1]				102	8.52	1.56	0.21	18.3	2.4
G2F	F(6)A2G(4)2			101	7.51	1.82	0.17		
G1F+1aGal	F(6)A2G(4)1Ga(3)1			32	1.605	0.704	0.028		
[h3n3f1]				89	2.127	0.700	0.082	32.9	3.8
G0F-N	F(6)A1			89	2.127	0.700	0.082		
G0F-N[6]	F(6)A1[6]			9	1.607	0.951	0.025		
G0F-N[3]	F(6)A1[3]			11	1.920	0.412	0.065		
[h5n2]				79	0.732	0.353	0.045	48.1	6.1
Man5	M5			79	0.732	0.353	0.045		
[h4n3f1]				77	2.200	0.822	0.064	37.3	2.9
G1F-N	F(6)A1G(4)1			76	2.186	0.820	0.067		
G1F-N[6]	F(6)A1[6]G(4)1			8	1.279	1.594	0.035		
G1F-N[3]	F(6)A1[3]G(4)1			12	1.775	0.940	0.028		
[h6n4f1]				73	1.800	0.469	0.081	26.0	4.5
G2F+1aGal	F(6)A2G(4)2Ga(3)1			73	1.800	0.469	0.081		
[h7n4f1]				71	0.900	0.337	0.044	37.4	4.9
G2F+2aGal	F(6)A2G(4)2Ga(3)2			70	0.893	0.324	0.045		
[h3n3]				63	0.440	0.315	0.040	71.7	9.0
G0-N	A1			63	0.425	0.294	0.041		
[h4n5f1]				67	0.681	0.286	0.028	42.1	4.1
G1FB	F(6)A2BG(4)1			57	0.671	0.272	0.034		
G1F+N (tri)	F(6)A3G(4)1			9	0.507	0.470	0.021		
[h5n3f1]				68	0.891	0.247	0.045	27.7	5.1
G1F-N+1aGal	F(6)A1G(4)1Ga(3)1			61	0.889	0.240	0.040		
[h3n4]				58	0.193	0.138	0.024	71.4	12.6
G0	A2			57	0.187	0.129	0.023		
[h4n3f1g1]				60	1.009	0.434	0.057	43.1	5.7
G1FS-N (NeuGc)	F(6)A1G(4)1Sg1			60	1.009	0.434	0.057		
[h5n5f1]				58	0.463	0.201	0.018	43.4	3.9
G2FB	F(6)A2BG(4)2			51	0.468	0.200	0.017		
G2F+N (tri)	FA3G2			7	0.243	0.208	0.005		

TABLE II—continued

Measurand	Oxford	CFG	Oxford	N	Median	MAD _c	S _{rep}	CV	CV _{rep}
[h4n4f1g1]				56	0.345	0.283	0.020	81.9	5.7
G1FS (NeuGc)	F(6)A2G(4)1Sg1			56	0.345	0.283	0.020		
[h3n5f1]				46	0.487	0.370	0.039	75.9	8.1
G0FB	F(6)A2B			41	0.476	0.359	0.041		
[h5n4f1g1]				50	0.454	0.258	0.027	56.9	5.8
G2FS (NeuGc)	F(6)A2G(4)2Sg1			50	0.454	0.258	0.027		
[h6n4f1g1]				49	0.459	0.208	0.039	45.3	8.5
G2FS+1aGal (NeuGc)	F(6)A2G(4)2Ga(3)1Sg1			49	0.459	0.208	0.039		
[h3n2f1]				45	0.143	0.111	0.010	77.6	6.6
Man3F	F(6)M3			45	0.143	0.111	0.010		
[h4n4]				35	0.493	0.623	0.065	126.3	13.1
G1	A2G(4)1			34	0.582	0.749	0.069		
[h5n4]				36	0.542	0.567	0.026	104.7	4.7
G2	A2G(4)2			36	0.525	0.553	0.026		
[h6n5f1]				38	0.282	0.157	0.016	55.8	5.5
G2FB+1aGal	F(6)A2BG(4)2Ga(3)1			21	0.259	0.147	0.015		
G3F	FA3G3			17	0.320	0.137	0.015		
G(4)3F	F(6)A3G(4)3			11	0.320	0.137	0.012		
[h4n3]				28	0.122	0.125	0.028	102.5	22.9
G1-N	A1G(4)1			25	0.124	0.147	0.039		
[h6n3f1]				27	0.189	0.098	0.016	51.9	8.3
Man5G1F hybrid	F(6)M5A1G(4)1			24	0.182	0.101	0.016		
[h7n5f1]				23	0.110	0.046	0.005	41.8	4.6
G2FB+2aGal	F(6)A2BG(4)2Ga(3)2			17	0.100	0.047	0.004		
[h5n3f1g1]				20	0.121	0.063	0.012	52.1	9.6
Man5G0FS (NeuGc) hybrid	F(6)M5A1Sg1			11	0.138	0.056	0.007		
[h5n4a1]				19	0.260	0.176	0.035	67.7	13.4
G2S (NeuAc)	A2G(4)2Sa1			19	0.260	0.176	0.035		
[h5n4f1a1]				17	0.327	0.411	0.014	125.7	4.4
G2FS (NeuAc)	F(6)A2G(4)2Sa1			17	0.327	0.411	0.014		
[h6n3]				20	0.226	0.159	0.019	70.3	8.2
Man5G1 hybrid	M5A1G(4)1			20	0.226	0.159	0.019		
[h5n3]				17	0.080	0.049	0.019	60.6	23.3
G1-N+1aGal	A1G(4)1Ga(3)1			17	0.080	0.049	0.019		

TABLE II—continued

Measurand	Oxford	CFG	Oxford	N	Median	MAD _E	S _{rep}	CV	CV _{rep}
[h6n2]				17	0.334	0.406	0.010	121.7	2.9
Man6	M6			17	0.334	0.406	0.010		
[h6n4f2]				16	0.115	0.114	0.017	98.9	15.0
G2F2+1aGal	F(6)A2F1G(4)2Ga(3)1			16	0.115	0.114	0.017		
[h6n3flg1]				16	0.074	0.050	0.006	68.1	7.5
Man5G1FS (NeuGe) hybrid	F(6)M5A1G(4)1Sg1			16	0.074	0.050	0.006		
[h7n3f1]				16	0.063	0.056	0.005	88.5	8.0
Man5G1F hybrid+1aGal	F(6)M5A1G(4)1Ga(3)1			16	0.063	0.056	0.005		
[h4n3fla1]				13	0.591	0.543	0.140	91.8	23.7
G1FS-N (NeuAc)	F(6)A1G(4)1Sa1			13	0.591	0.543	0.140		
[h4n4f2]				13	0.147	0.104	0.009	70.8	5.8
G1F2	F(6)A2F1G(4)1			13	0.147	0.104	0.009		
[h9n5f1]				13	0.057	0.017	0.003	30.2	5.2
[h4n4fla1]				10	0.405	0.377	0.050	93.0	12.4
G1FS (NeuAc)	F(6)A2G(4)1Sa1			10	0.405	0.377	0.050		
[h5n4f2]				11	0.087	0.078	0.012	90.3	13.5
G2F2	F(6)A2F1G(4)2			10	0.118	0.114	0.012		
[h3n2]				10	0.057	0.069	0.011	122.2	18.9
Man3	M3			10	0.057	0.069	0.011		
[h4n5flg1]				8	0.032	0.032	0.007	100.3	22.2
G1FBS (NeuGe)	FA2BG(4)1Sg1			8	0.032	0.032	0.007		
[h6n4fla1]				9	0.121	0.149	0.011	122.6	9.1
G2FS+1aGal (NeuAc)	F(6)A2G(4)2Ga(3)1Sa1			8	0.102	0.135	0.008		
[h7n3]				10	0.088	0.071	0.008	80.2	9.1
Man5G1+1aGal hybrid	M5A1G(4)1Ga(3)1			10	0.088	0.071	0.008		
[h5n4g2]				7	0.40	0.39	0.05	98.7	12.0
G2S2 (NeuGe)	A2G(4)2Sg2			7	0.40	0.39	0.05		
[h8n5f1]				9	0.06	0.02	0.00	37.1	7.2
[h5n3a1]				7	0.25	0.32	0.01	128.2	3.1
[h5n4fla2]				8	0.41	0.27	0.01	67.2	1.7
G2FS2 (NeuAc)	F(6)A2G(4)2Sa2			8	0.41	0.27	0.01		
[h3n5]				7	0.17	0.14	0.03	86.1	18.3
G0B	A2B			7	0.17	0.16	0.03		
[h4n2]				7	0.10	0.09	0.01	89.4	7.2
Man4	M4			7	0.10	0.09	0.01		
[h4n3f2]				7	0.12	0.12	0.01	99.6	5.9
[h7n2]				7	0.55	0.78	0.02	140.3	3.5
Man7	M7			7	0.55	0.78	0.02		
Unknown Glycans				25	2.60	3.30	0.08	126.7	3.0

n = number of values; consensus median = consensus median (50th percentile or 2nd quartile, expressed as percent of total composition) of the distribution of the reported results; MAD_E = median absolute deviation; S_{rep} = a robust estimate of the expected repeatability, the median SD for glycan compositions with at least six results; CV = robust coefficient of variation (MAD_E/median); CV_{rep} = (S_{rep}/median).

TABLE III

Derived attribute quantities for NISTmAb PS 8670, estimated from the consensus median values of the glycan compositions

Features	Number of Labs	25%	Median	75%
Galactosylation	32	31.78	36.21	43.30
alpha-Galactosylation	13	3.00	3.77	4.97
Sialylation	18	2.26	3.48	6.98
NeuAc sialylation	6	0.71	1.25	2.83
NeuGc sialylation	12	1.55	2.23	4.16
Core fucosylation only	37	92.36	103.95	118.23
Antenna fucosylation	3	0.25	0.38	0.73
Bisecting GlcNAc	7	1.49	2.17	3.83
High mannose	6	1.04	1.92	3.42
Sialic Acid/Galactose Ratio		0.07	0.10	0.16

For sialylation levels, the same principle is applied, *i.e.* the sialylation per antenna was calculated. For NISTmAb, NeuAc and NeuGc sialylation were observed at a medium value of 1.3% and 2.2%, respectively. The ratio of sialic acid per galactose was calculated as 0.1%. This value reflects the sialylation activity, *i.e.* whether available acceptor positions have been sialylated.

Monofucosylation was interpreted as core fucosylation. NISTmAb had very high levels of core fucosylation (median of 104%; values exceeding 100% are artifacts of the variable normalization factors). The antenna fucosylation (manifested as difucosylation) at 0.38% was calculated separately because the interaction between core and antenna fucosylation is assumed to be minimal.

Issues with Glycosylation Analysis Methods—Laboratories reported challenges in identifying and quantifying glycans. Some laboratories reported their analysis at the composition level only and did not differentiate isomeric species; some laboratories analyzed at the glycan isomer level and had challenges in identifying co eluting or same mass species. These issues are usually method dependent, as shown in [supplemental Table 4](#). Some glycan structures were supported by MS/MS and other structures were inferred from similar structures, *e.g.* triantennary structures. Consequently, some abundance values were assigned to triantennary structures instead of bisecting glycans. The same laboratory observed a discrepancy for glycan G1FS N (NeuGc). Compared with quantitative data from subunit analysis, the glycopeptide abundance was higher than subunit abundance. Overall, the laboratory observed that glycopeptide abundances were in good accordance with the subunit data with slightly lower values for G0F and G1F in the glycopeptide analysis.

One laboratory analyzed protein fragments by LC MS that had masses up to 25 kDa. One or two nominal mass differences were challenging to distinguish using their technique.

Another laboratory analyzed 2-AB glycans using HILIC LC FD with comparison to retention time of standards. It was difficult to distinguish glycans that coelute, *e.g.* G2 and Man6. Moreover, the laboratory was unable to identify glycan peaks

present in the samples but absent in their lab-designated standard sample.

[Supplemental Table S4](#) lists the advantages of certain methods as described by laboratories. Sialic acid specific derivatization of 2-AB or ethyl esterified glycans analyzed by LC FD or MALDI MS could confirm presence of terminal α 2 linked NeuGc in glycans.

Intact protein analysis could give the G0F/G1F, G1F/G2F, G0/G0F, G0F N/G0F, G2F+1aGal/G2F glycoforms present in the monoclonal antibodies. Due to the cleavage of glycopeptides or glycans from the protein, analysis using these two analytes could not provide this specific information.

2-AB glycans analyzed by LC FD using glucose units and APTS labeled glycans analyzed by multiplexed capillary gel electrophoresis (xCGE) using migration time of standards and exoglycosidases could distinguish between isomers.

Additional Information on NISTmAb

Some laboratories performed unique analyses, resulting in additional information on the glycosylation of NISTmAb

Absolute Glycan Amounts—One laboratory determined absolute glycan amounts in the samples by employing isotopic dilution methods, using ^{13}C -labeled *N*-glycans as internal standards followed by MALDI-TOF MS analysis. For example, the absolute amounts of three glycans in NISTmAb were reported to be:

G0F^a: (626.7 ± 7.5) pmol per 100 μg NISTmAb

G2F: (110.8 ± 5.9) pmol per 100 μg NISTmAb

G2: (19.0 ± 3.8) pmol per 100 μg NISTmAb

Glycoforms in Intact Samples—One laboratory analyzed intact mAb samples using LC-MS and identified glycoforms on the two Fc portions that were analyzed. Example glycoforms are G0/G0F, G0F/G1F, G1F/G2F, G0F-N/G0F, and G2F+1aGal/G2F. Abundance values for these glycoforms are shown in [supplemental Table S3](#), bottom rows.

Unknown Modifications—One laboratory found an unknown delta mass of + 1856 Da at 0.40% abundance in NISTmAb by LC-MS. Another laboratory detected + 54 Da unidentified protein modification using ^1H -NMR and MS. The latter found a glycan present in <3% with no branching at the central β -Mannose, *i.e.* there is only one arm present with a terminal NeuGc and a proximal Fuc.

Unglycosylated Forms—One laboratory used protein fragment analysis by C4-LC-MS and observed the unglycosylated form of the samples at 0.60% abundance in NISTmAb. Another participant used glycopeptide analysis by C18-LC-MS and detected the unglycosylated form at 0.91% abundance in NISTmAb, as confirmed by high mass accuracy MS (< 3 parts per million (ppm^b) mass deviation).

^a Definition of naming convention of glycans is in the Experimental Procedures section.

^b ppm is a unit of mass measurement error ($\Delta m/z$)/(m/z) * 1000000, expressed as unified atomic mass units (Daltons) divided by charge.

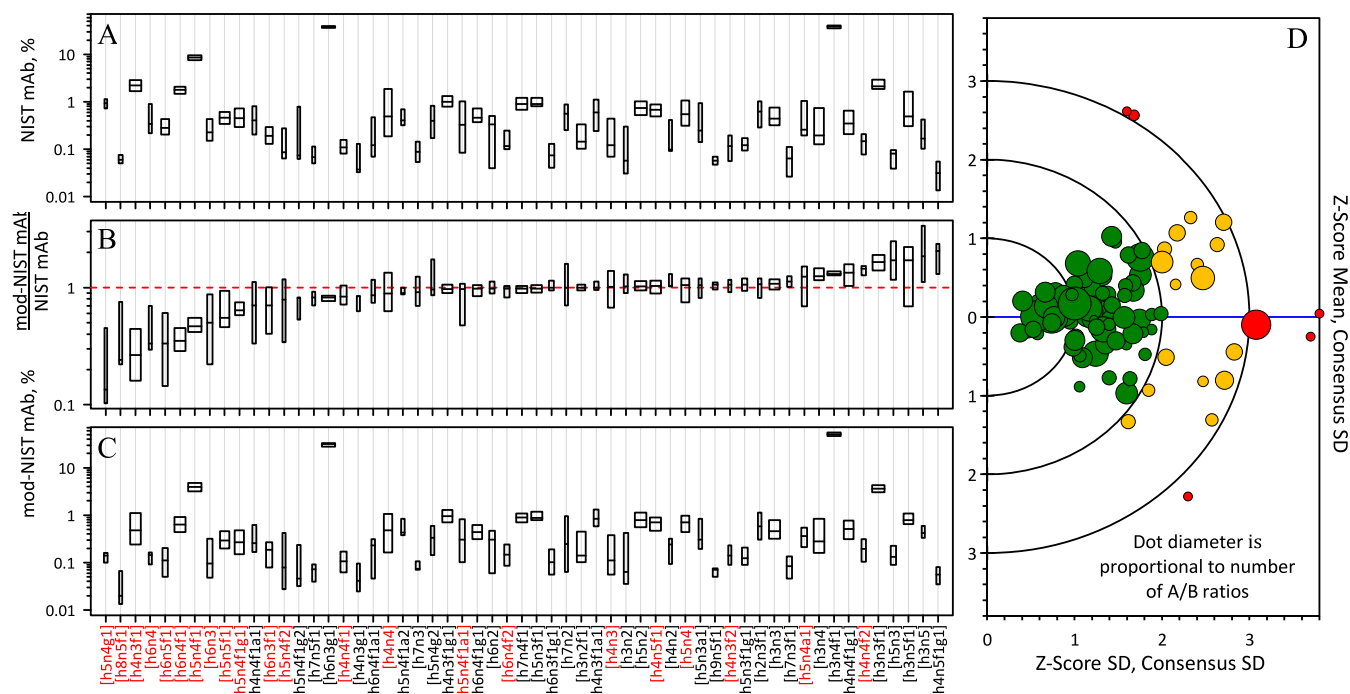


FIG. 3. Summary results for the 57 most frequently reported unique glycan compositions. Box plots for A) mod-NISTmAb, B) mod-NISTmAb/NISTmAb ratio, and C) NISTmAb PS 8670. Glycan compositions in red have terminal β 1,4-gal as their dominant structure. Each box represents the distribution of the central 50% of the mean of the reported replicate values for one glycan. The horizontal middle line in each box represents the consensus median. The width of each box is proportional to the square root of the number of values defining the distribution. The dashed red line in the display of the Fig. 3B denotes the expected ratio, 1.0, when a glycan result is the same in mod-NISTmAb as it is in NISTmAb. Glycans are sorted in order of increasing mod-NISTmAb/NISTmAb ratio. D) Targetplot summary of mod-NISTmAb/NISTmAb ratios relative to the consensus medians. Each dot represents one set of results. Dot diameter is proportional to number of mod-NISTmAb/NISTmAb ratios reported. The dots are color-coded by distance from the (0, 0) origin: dots within two comparability units are colored green, between two and three units are colored yellow, and greater than three units are colored red. The “Z-score Mean” axis displays the average bias estimated as the mean of the “Z-score” values of the ratios. The “Z-score SD.” axis displays the variability of individual bias estimates, estimated as the standard deviation of the Z-scores.

Glycan Motifs—One laboratory employed lectin microarrays on intact proteins (33). The participant found that NISTmAb has more core fucosylation whereas mod-NISTmAb has slightly more terminal fucosylation. Both samples hint at the presence of α 2,6 sialylation and show similar patterns for hybrid/lower order mannose *N*-glycans, indicating no strong presence of complex glycans.

DISCUSSION

Sample Ratios Demonstrate Comparability—To examine the between-data set differences in the measurements of the two samples, mod-NISTmAb/NISTmAb ratios were calculated for the 57 glycan compositions that were reported at least six times for either NISTmAb or mod-NISTmAb. Since the number and identity of the reported glycan compositions in the two samples were nearly the same within each data set, these ratios are insensitive to the normalization factors. Figs. 3A and 3C display the NISTmAb and mod-NISTmAb measurement distributions of these compositions as boxplots. Fig. 3B displays the mod-NISTmAb/NISTmAb ratios. [Supplemental Table S3](#) lists the values of these ratios.

Every box in Fig. 3 spans the central 50% of the reported or calculated values, with the horizontal middle line denoting the consensus median. The compositions are sorted in order of increasing mod-NISTmAb/NISTmAb median. The width of each box is proportional to the square root of the number of values defining the distribution, so the wider the box, the more laboratories reported that glycan. For example, 102 of the 103 data sets identified [h3n4f1] and [h4n4f1], which have the widest boxes. The dashed red line in Fig. 3B denotes the expected ratio, 1.0, when a glycan result is the same in mod-NISTmAb as it is in NISTmAb. Ideally, glycan structures with terminal β 1,4-gal should fall below this red line because β 1,4-galactosidase, an enzyme that specifically cleaves terminal β 1,4-gal, was added to a portion of the mod-NISTmAb. Glycan compositions colored red in the x axis have terminal β 1,4-gal as their dominant structure. As expected, most of these glycans fall below the red line, *i.e.* they have lower abundance in mod-NISTmAb than in NISTmAb.

Fig. 3D displays the average variability and bias of the mod-NISTmAb/NISTmAb ratios relative to the consensus medians in a form sometimes called a “targetplot” (34). Each dot

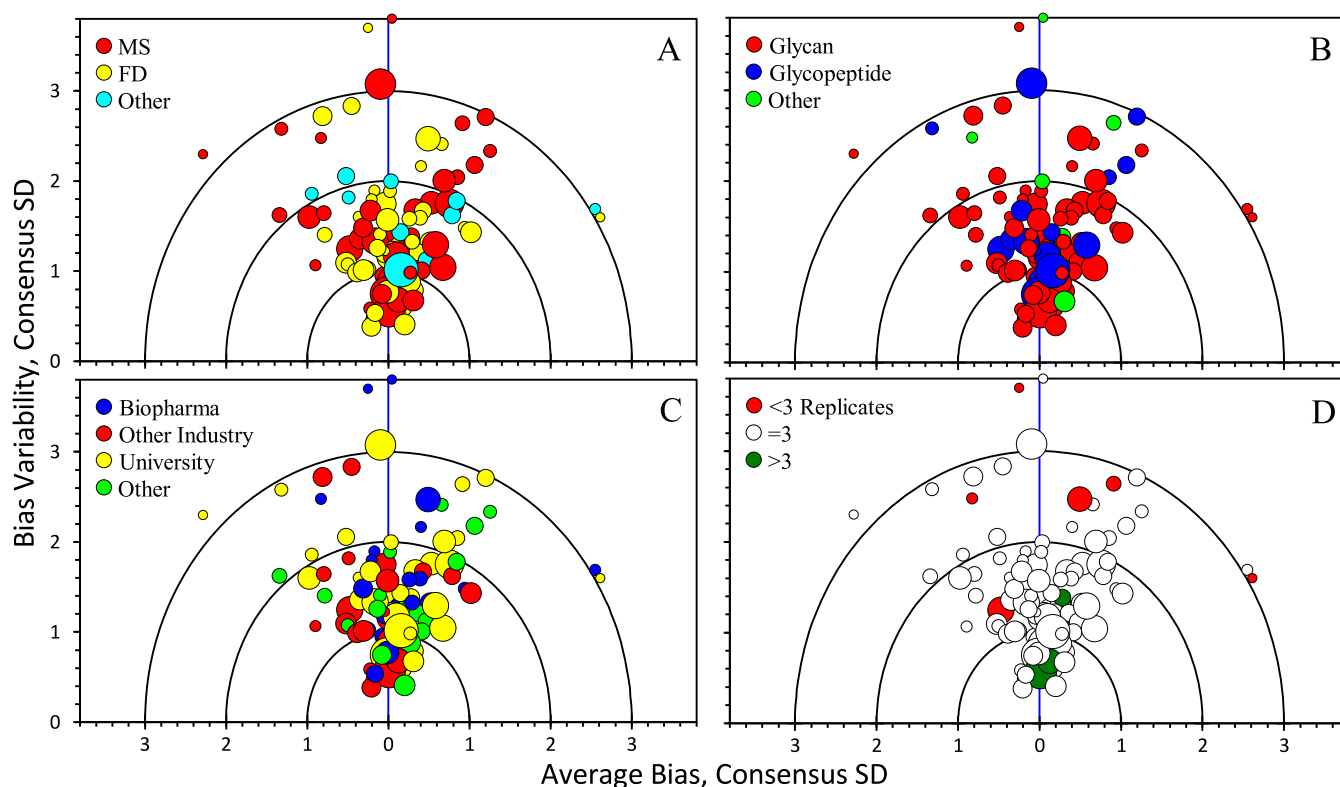


FIG. 4. Targetplot summary of mod-NISTmAb/NISTmAb ratios relative to the consensus medians. Each dot represents one set of results. Dot diameter is proportional to number of ratios reported. The “Average Bias” axis displays values estimated as the mean of the “Z-scores” of the ratios. The “Bias Variability axis displays values estimated as the standard deviation of the Z-scores. The subplots are colored by: A) analytical technique, B) analyte, C) laboratory type, and D) number of replicates.

marks the summary score for the unique glycan compositions in one set of results. The vertical axis displays the mean bias or “concordance” of the ratios: $z_i = (\sum_j (x_{ij} - \bar{x}_j)/s_j)/n_j$, where x_{ij} is the ratio for the j^{th} composition reported in the i^{th} data set, \bar{x}_j is the consensus location of the j^{th} composition, s_j is the consensus dispersion for that composition, and n_j is the number of data sets that report values for that composition in both samples. Because the distributions of the ratios for most compositions are heavily-tailed, the consensus location and dispersion are estimated using robust estimators: the median for location and the scale-adjusted median absolute deviation from the median (MAD_E) for dispersion. The horizontal axis displays the variability of bias estimates, estimated as the SD, or “apparent precision” of the biases:

$$s(z_i) = \sqrt{\sum_j ((x_{ij} - \bar{x}_j)/s_j)^2 / (n_j - 1)}$$

The semicircles mark one, two, and three “comparability” distances from the ideal ($z_i, s(z_i)$) value of (0, 0):

$$d_i = \sqrt{z_i^2 + s^2(z_i)}$$

The targetplot dots are color-coded by distance from the (0, 0) origin: dots within two comparability units are colored green, between two and three units are colored yellow, and greater than three units are colored red. These codes roughly

indicate “Good”, “Moderate”, and “Questionable” agreement with the consensus mod-NISTmAb/NISTmAb ratio estimates.

Fig. 4 displays the same targetplot colored by analyte, analytical technique, organizational type, and number of replicates. No systematic trend was apparent in any of the parameters.

Youden Two-Sample Plots of Glycan Compositions—Fig. 5 shows Youden two-sample plots for the four most abundant glycan compositions, [h3n4f1], [h4n4f1], [h5n4f1] and [h3n3f1]. Supplemental Fig. S6 presents similar plots for all compositions with quantitative results for both samples in at least six data sets. Each dot in these panels represents one (mod-NISTmAb, NISTmAb) pair from one data set. The median of each sample is used as the univariate estimate of distribution location because it is not as vulnerable to extreme values as is the mean. The center of each panel (for [h3n4f1], the values (52, 39)) represents the consensus location of the resulting bivariate distribution. The ellipse in each panel is constructed to enclose data pairs that are consistent with the consensus medians at an approximate 68% (one sigma) level of confidence. These ellipses are defined by (1 the univariate medians, 2 the MAD_E robust estimates of the univariate SDs, 3 the bivariate correlation between the two distributions, and 4 a factor that provides a stated coverage probability.

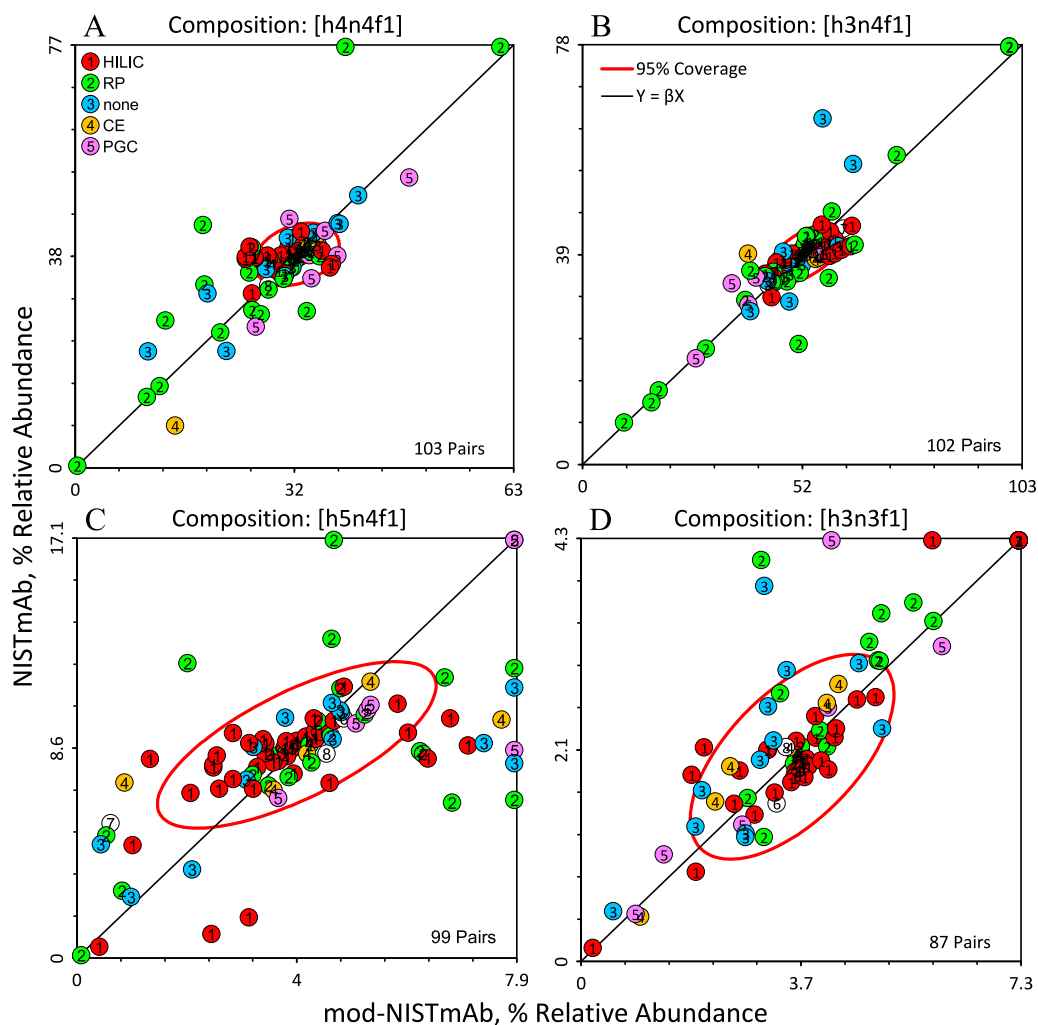


FIG. 5. Youden two-sample plots for the four most abundant glycan compositions in NISTmAb. Each panel displays the bivariate distribution for one composition. A) [h4n4f1], B) [h3n4f1], C) [h5n4f1], and D) [h3n3f1] (see Materials and Methods for key). The panels are centered on the univariate medians and scaled to display all values from 0 to twice the median. Values that are greater than twice the median are assigned a value of twice the median. The ellipse includes about 68% of the pairs (≈ 1 SD). The diagonal line represents the expected relationship when measurement systems have the same bias for both samples. Each symbol represents the (mod-NISTmAb, NISTmAb) pair for one data set. Symbols are coded and labeled by separation technique.

When the two samples present similar measurement challenges, Youden two-sample plots graphically separate random within-data set measurement imprecision from systematic between-data set bias (35, 36). Pairs of measurements that reflect the same proportional bias will fall along the 45° line. This often indicates a calibration issue. Pairs of measurements that lie well away from the line indicate sample-specific interferences or measurement systems that are not in adequate statistical control.

The dots in Fig. 5 are colored by separation method. Essentially all laboratories that used HILIC separation are within the ellipse for [h3n4f1] and [h4n4f1], are within the ellipse or lie along the diagonal for [h3n3f1] but show significant scatter for [h5n4f1]. The pattern of off-diagonal results for [h5n4f1] suggests that for this composition the two samples presented

several measurement systems with different measurement challenges.

Measurement Repeatability Better for More Abundant Glycans—Metrological repeatability is defined as the variation in measurements taken by a single person or instrument on the same sample, under the same conditions, and in a short period of time. Fig. 6 shows a scatterplot of the relationship between measurement repeatability, estimated as the coefficient of variation expressed as percentage (CV), and glycan amount, estimated as the mean of the replicates, for one exemplar laboratory. The black line represents a simple consensus power-law: $CV = 5.0 \times \text{Mean}^{-0.35}$ (or, expressed as $SD = 0.050 \times \text{Mean}^{0.65}$). Note that CV is not constant for all glycan amounts but rather generally increases with decreasing amount. This trend is closely re-

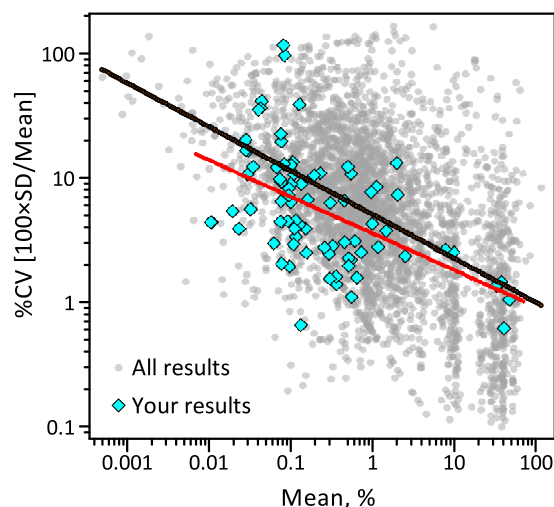


FIG. 6. Scatterplot of the relationship between measurement repeatability, estimated as the CV, and glycan amount, estimated as the mean of the replicates. The black line represents a consensus power curve fit to all available (mean of replicates, relative standard deviation) pairs, denoted by the light gray dots: $CV = 5.0 \times \text{Mean}^{-0.35}$ (or $SD = 0.050 \times \text{Mean}^{0.65}$). The red line is the power curve fit to the pairs, denoted by the blue diamonds, reported in one data set. The measurement repeatability of this data set is somewhat better than average.

lated to Horwitz's observation that the interlaboratory study CV generally increases with decreasing analyte concentration regardless of the analytical method or number of laboratories (37). It has been speculated that this empirical trend arises more from cost-benefit considerations than intrinsic analytical limitations (38).

Repeatable Measurements are Closer to Community's Consensus Values—The extent of agreement between a given laboratory's reported values and the study's consensus median values is a strong function of the laboratory's measurement repeatability. Thus, establishing within-laboratory repeatability is critical to the harmonization of glycosylation analysis methods between-laboratories. Fig. 7 shows a scatterplot of the closeness to consensus of the reported medians as a function of measurement repeatability. "Closeness" is estimated as the relative absolute difference between a given result mean and the median of the means provided in all 103 reports: $100 \times \text{Mean} - \text{Consensus Median} / \text{Mean}$. The symbols are coded by the user-stated nature of the reported replicates. Because of the great variability in the results for the various glycans, the over-all repeatability for each laboratory is estimated as the median of the repeatabilities of the reported unique glycan compositions.

Trueness of the Consensus Estimates—Metrological trueness is the closeness of a result to the best available approximation to its (unknown) true value. Area-based estimates for 27 resolved NISTmAb peaks of defined composition have been published (22). Unique correspondences can be established between glycan compositions and most of the

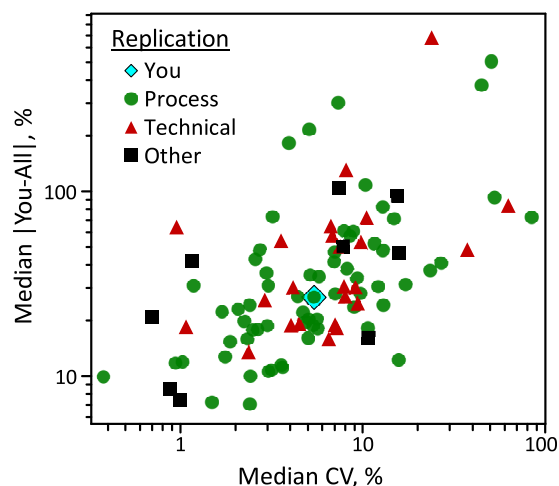


FIG. 7. Scatterplot of the closeness to consensus of the reported values as a function of measurement repeatability estimated as CV. The symbols are coded by the user-stated nature of the reported replicates. The plot shows the data point, in blue diamond, of one data set.

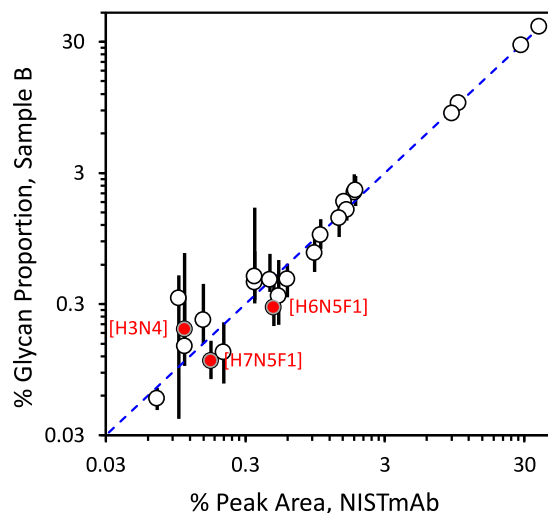


FIG. 8. Comparison Consensus Medians to Published Peak Areas²². Each symbol represents this interlaboratory study's consensus median % proportion as a function of the published peak areas for one composition or defined group of compositions. The bars span the central 50% of the distribution of reported values. The solid red circles denote compositions where the central 50% of the values does not include the published peak area. The dashed line represents equality between the two estimates.

peak assignments, Fig. 8 demonstrates that the study's consensus medians agree well with published values for composition levels of 1% or more. While agreement diverges with decreasing abundance, only three of the published values are not contained within the study's central 50% distribution.

In broad terms, a large proportion of methods used chromatography for separation followed by identification either by mass spectrometry or chromatographic retention times. Some laboratories combined both for identification. Labora-

tories that used MS only reported more distinct glycan compositions. Laboratories that used MS with exoglycosidases, RT, FD, and/or MS/MS reported isomers. However, the range in the number of reported compositions within each category is quite large.

CONCLUSION

Community consensus medians for 57 glycan compositions in NISTmAb were obtained from 103 reports of 76 laboratories. Levels of sialylation (NeuAc and NeuGc), galactosylation (including alpha-galactosylation), and fucosylation (core and antenna) were calculated from consensus medians. These values could be useful in comparing analytical methods for determining glycosylation of a publicly-available material. A unique advantage of using NISTmAb is that because it was produced in NS0 cells, a rich array of glycan compositions with low-abundant variants including NeuGc and alpha-Gal-containing glycans is observed.

More importantly, this study provides an overview of the current state of glycosylation determination in the glycomics community:

1. Most biopharmaceutical company laboratories analyzed glycosylation using fluorescently-labeled glycans whereas most academic laboratories prefer glycopeptide analysis and non-fluorescently-labeled glycan analysis. On average, biopharmaceutical company laboratories reported lower number of glycan compositions than university laboratories.
2. Glycan compositions identified using different methods for determining glycosylation ranged from 4 to 48 compositions. Laboratories that used glycopeptides as analyte, on the average, reported the greatest number of glycan compositions.
3. Agreement to the community's consensus medians did not depend on a specific method or laboratory type but on the measurement repeatability. The better a laboratory's measurement precision the more likely that the laboratory's mean values will agree with the community consensus. Thus, establishing within-laboratory repeatability is critical to the harmonization of glycosylation analysis methods between-laboratories.
4. Most methods used in the different laboratories could be corrected by calibration methods when and if a standard becomes available.
5. Measurement repeatability was better for more abundant glycans. The CVs increased with decreasing glycan abundances. This work is the first attempt to analyze data from the interlaboratory study. Further data mining studies on this large data set could be valuable to the glycomics community to uncover underlying systematic trends. Examples of potential studies include comparisons of identification methods, quantification methods, or normalization methods. Other areas to explore include assigning degrees of confidence in identification meth-

ods (e.g. identification by MS1 alone *versus* identification by MS1 with one, two, or three orthogonal values).

The study shows a clear need for harmonization of glycosylation analysis methods. Further understanding of causes of deviations would be useful in developing a harmonized method for glycosylation analyses of mAbs.

Finally, we note that the generally unsatisfactory state of confident identification of less abundant glycan structures. While the increasing sensitivity of mass spectrometry-based methods have revealed an increasingly large number of glycan compositions, the ability to elucidate their structures have not kept pace. In many cases, glycan structures are routinely inferred through biological reasoning. The use of exoglycosidases is helpful in excluding candidates, but of limited value for minor glycans or complex mixtures. Perhaps the emerging field of ion mobility mass spectrometry can aid the distinction of isomers.

Acknowledgments—Thanks to NISTers Mike Tarlov, Dean Ripple, Karen Phinney, John Schiel, John Bowden, David Bunk, Jeff Hudgens, and Paul Rudnick for help in study design; Luke Arbogast, Ioannis Karageorgos, Yuxue Liang, Eric Yan, Qian Dong, and Yamil Simon for their help in preliminary experiments; Jeanice Brown Thomas, Randy Isenburg, Dawn Bruchey, Paul Thompson, and Jeff Hudgens for their help in logistics; and Honeyeh Zube and J'aime Maynard for help in legal matters. We thank the following for their help in the study and study design: Chuck Hague and Cara Wong (BioMarin); Dongbo Bu (Chinese Academy of Sciences); Joon Ho Eom (Korea National Institute of Food and Drug Safety); Joe Zaia and Nancy Leymarie (Boston U); Manfred Wuhrer and David Falck (Leiden U); Louise Royle (Ludger Ltd.); CT Yuen (NIBSC); Carlito Lebrilla (U California Davis); Pauline Rudd (NIBRT); Ron Orlando and Parastoo Azadi (U Georgia); John Cipollo (FDA); Yehia Mechref (Texas Tech U); Albert Heck (Utrecht U); Paul Rudnick (Spectragen Informatics); Eoin Cosgrave (Seattle Genetics); Doug Sheeley (NIH); Nuno Bandeira (U San Diego); and Thuy Tran and Vern Reinhold (U New Hampshire). Thanks to Lai-Xi Wang (U Maryland); Chris Barton (Shire); Ellen Guthrie, Paula Magnelli and Beth Mcleod (NEB); Sam Tep, Justin Hyche, and Ted Haxo (Prozyme); and Charles Nwosu (Takeda) for their help in modifying NISTmAb. We thank Manfred Wuhrer, Pauline Rudd, Mustafa Varoglu (SAGE Therapeutics), and Ron Orlando for their help in publicity.

DATA AVAILABILITY

Summary results as provided by the participants, expressed as percentage total glycan, are provided in the Supplemental Information.

* This work was supported by: 1. Science Foundation Ireland Starting Investigator Research under Grant 13/SIRG/2164 to R.S.; 2. Swedish Research Council under Grant 8266 to G.L. and J.N.; 3. Alberta Glycomics Centre to C.C.; 4. National Institute of Diabetes and Digestive and Kidney Diseases (NIDDK) under Grant K01-DK101632 to J.W.F.; 5. Australian Research Council Centre of Excellence for Nanoscale BioPhotonics (CNBP) under Grant CE140100003 to N.H.P. and A.E.-D.; 6. European Union (EU) FP7 program HighGlycan under Grant 278535 to R.O.F. and P.M.R.; 7. National Institutes of Health (NIH) Research Resource for Biomedical Glycomics under Grant P41GM10349010 and Grant 1S10OD018530 to P.A.; 8. Austrian Research Promotion Agency Laura Bassi Center of Expertise under Grant 822757 to C.G.-G.; 9. National Natural Science Foundation of China under Grant 31600650, 31671369, and 31770775D to D.B., S.S., C.H. and Y.L.; 10. Deutsche Forschungs-

gemeinschaft (DFG, German Research Foundation) "The concert of dolichol-based glycosylation: from molecules to disease models" under Grant FOR2509 to E.R.; 11. European Union (EC) "IMforFuture" under Grant 721815 to E.R.; 12. German Federal Ministry of Education and Research (BMBF) "Die Golgi Glykan Fabrik 2.0" under Grant 031A557 to S.C. and E.R.; 13. Health Canada, Government of Canada to T.D.C. and M.C.; 14. European Union FP7 GastricGlycoExplorer ITN under Grant 316929 and the Swedish Research Council under Grant 621–2013-5895 to N.G.K.; 15. National Research Council of Science and Technology Creative Allied Project (CAP) under Grant NTM2371511 to J.S.Y.; 16. Hungarian Government project under Grant NKFIH-K 116263 and BIONANO GINOP-2.3.2- 15–2016-00017 to A.G.; and 17. National Research Foundation of Korea under Grant NRF-2013M3A9B6075933 to H.J.A.

□ This article contains [supplemental Figures, Tables, and Discussion](#).

⁸⁴ Current Address: Agilent Technologies, Inc., 2500 Regency Parkway, Cary, North Carolina 27518.

⁸⁵ Current address: Asparia Glycomics, Paseo de Mikeletegi, 8320009 San Sebastián, Spain.

⁸⁶ Current address: Analytical Development-Protein Characterization, Janssen R & D, LLC, 260 Great Valley Parkway, Malvern, Pennsylvania 19355.

⁸⁷ Current address: Institute for Glycomics, Griffith University, Southport, Australia.

⁸⁸ Current address: Institute for Glycomics, Griffith University, Gold Coast Campus, Queensland 4222, Australia.

⁸⁹ Current address: Pfizer 700 Chesterfield Pkwy W, St. Louis, MO 63198 US.

⁹⁰ Current Address: Department of Chemistry, University of Alberta, 11227 Saskatchewan Drive, Edmonton, Alberta, Canada T6G 2G2.

⁹¹ Current Address: Analytical, Regulatory, and Clinical Sciences, Aurobindo Biologics (A Division of Aurobindo Pharma Ltd.), Indrakaran Village, Sangareddy District - 502329, Telangana, India.

⁹² Current Address: Translational Science, Intas Pharmaceuticals Ltd., Plot No. 423/P/A, Sarkhej-Bavla Highway, Moraiya, Ta; Sanand, Ahmedabad 382213 Gujrat India.

⁹³ Current Address: Novartis Biologics Center, Novartis Institutes for BioMedical Research, Inc. Novartis Pharma, 4002 Basel, Switzerland.

⁹⁴ Current Address: Department of Science and Mathematics, Texas A&M University-San Antonio, One University Way, San Antonio, Texas 78224.

⁹⁵ To whom correspondence should be addressed. Tel.: +1 (240) 630-2726; E-mail: lornadeleoz@gmail.com.

Author contributions: M.L.A.D.L., D.L.D., J.Z., P.A., J.F.C., D.F., M.W., L.R., C.Y., D.J.H., R.M.O., P.M.R., Y.M., C.L., A.J.R.H. and S.E.S. designed research; M.L.A.D.L., D.L.D., A.F., L.L., H.K.Y., O.P., G.O.S., K.F., R.F., Y.H., Z.S., P.Z., F.A., C.G., C. Shao, J.Z., W.E., S. Pangelley, D.S., A. Wiechmann, A.R., W.J., A. Beck, J.W.F., C.H., Y. Li, Y. Liu, S. Sun, Y.W., Y.S., H.J.A., N.-C.R., J.E.R., S.A., P.A., L.B., Z.L., Y.A., J.F.C., M.P.-B., J. Štambuk, G. Lauc, X.L., P.G.W., A. Bock, R. Hennig, E.R., M.C., T.C., M.N., T.S., P.A.L., P.L., J.J., S.J.Y., H.Z., T. Kelly, S. Klapoetke, R. Cao, J.Y.K., H.K.L., J.L., J.S.Y., S. Kim, S. Suh, N.d.H., D.F., G.S.L.-K., M.W., R.J.E., R.P.K., L.P.L., L.R., P.A.U., N.P., X. Song, A.E.-D., E.L., S.C., K.A., D.K., T. Kasali, V.L., Y.C., K.G., B.G., R.A., R.J., C.J.M.S., K.K., H. Yagi, S. Kondo, C.Y., A.H., X. Shi, P.M., B.T.K., L.K.M., D.J.H., R.M.O., P.M.R., R.S., E.S.H., D.C.M., J.K., P.B., D.M., A. Saati, C.M., S. Mast, S.T., J.T., T.N., S. Sekiya, A. Shafer, S.F., M.T., P.d.V., C.C., P.P., N.C.T., Y.M., S. Patil, J.S.R., R. Chakrabarti, D.D., M.L., C.Z., C.W.C., B.R., R.M.W., C.L., L.D.W., A.G., M.S., B.G.K., K.L., C. Sihlbom, B.A., C.J., N.G.K., J. Örnros, G. Larson, J.N., B.M., A. Wiegandt, E.K., H.P., E.D.B., N.S., Y.F., E.L.-W., S. Maier, A.Z., A.J.R.H., Y.Y., R. Haselberg, Y.Q.Y., W.A., J.W.L., H. Yuan, and S.E.S. performed research; M.L.A.D.L., D.L.D., A.F., L.L.,

H.K.Y., O.P., G.O.S., K.F., R.F., Y.H., Z.S., P.Z., F.A., C.G., C. Shao, J.Z., W.E., S. Pangelley, D.S., A. Wiechmann, A.R., W.J., A. Beck, J.W.F., C.H., Y. Li, Y. Liu, S. Sun, Y.W., Y.S., H.J.A., N.-C.R., J.E.R., S.A., P.A., L.B., Z.L., Y.A., J.F.C., M.P.-B., J. Štambuk, G. Lauc, X.L., P.G.W., A. Bock, R. Hennig, E.R., M.C., T.C., M.N., T.S., P.A.L., P.L., J.J., S.J.Y., H.Z., T. Kelly, S. Klapoetke, R. Cao, J.Y.K., H.K.L., J.L., J.S.Y., S. Kim, S. Suh, N.d.H., D.F., G.S.L.-K., M.W., R.J.E., R.P.K., L.P.L., L.R., P.A.U., N.P., X. Song, A.E.-D., E.L., S.C., K.A., D.K., T. Kasali, V.L., Y.C., K.G., B.G., R.A., R.J., C.J.M.S., K.K., H. Yagi, S. Kondo, C.Y., A.H., X. Shi, P.M., B.T.K., L.K.M., D.J.H., R.M.O., P.M.R., R.S., E.S.H., D.C.M., J.K., P.B., D.M., A. Saati, C.M., S. Mast, S.T., J.T., T.N., S. Sekiya, A. Shafer, S.F., M.T., P.d.V., C.C., P.P., N.C.T., Y.M., S. Patil, J.S.R., R. Chakrabarti, D.D., M.L., C.Z., C.W.C., B.R., R.M.W., C.L., L.D.W., A.G., M.S., B.G.K., K.L., C. Sihlbom, B.A., C.J., N.G.K., J. Örnros, G. Larson, J.N., B.M., A. Wiegandt, E.K., H.P., E.D.B., N.S., Y.F., E.L.-W., S. Maier, A.Z., A.J.R.H., Y.Y., R. Haselberg, Y.Q.Y., W.A., J.W.L., H. Yuan, and S.E.S. analyzed data; M.L.A.D.L., D.L.D., and S.E.S. wrote the paper.

DISCLAIMER: The authors declare that they have no conflicts of interest with the contents of this article. Any mention of commercial products is for information only; it does not imply recommendation or endorsement by any of the participating institutions. The content is solely the responsibility of the authors and does not necessarily represent the official views of any of the participating institutions.

Certain commercial equipment, instruments, or materials are identified in this paper in order to specify the experimental procedure adequately. Such identification is not intended to imply recommendation or endorsement by the National Institute of Standards and Technology, nor is it intended to imply that the materials or equipment identified are necessarily the best available for the purpose.

REFERENCES

- Yang, S., Li, Y., Shah, P., and Zhang, H. (2013) Glycomic analysis using glycoprotein immobilization for glycan extraction. *Anal. Chem.* **85**, 5555–5561
- Vreeker, G. C. M., and Wuhrer, M. (2017) Reversed-phase separation methods for glycan analysis. *Anal. Bioanal. Chem.* **409**, 359–378
- Ruhaak, L. R., Zauner, G., Huhn, C., Bruggink, C., Deelder, A. M., and Wuhrer, M. (2010) Glycan labeling strategies and their use in identification and quantification. *Anal. Bioanal. Chem.* **397**, 3457–3481
- Dotz, V., Haselberg, R., Shubhakar, A., Kozak, R. P., Falck, D., Rombouts, Y., Reusch, D., Somsen, G. W., Fernandes, D. L., and Wuhrer, M. (2015) Mass spectrometry for glycosylation analysis of biopharmaceuticals. *Trac-Trend Anal. Chem.* **73**, 1–9
- O'Flaherty, R., Muniyappa, M., Walsh, I., Stockmann, H., Hutson, R., Saldova, R., and Rudd, P. M. (2016) High-throughput sequential glycoproteomics of six abundant glycoproteins IgG, IgA, IgM, transferrin, haptoglobin and alpha-1-antitrypsin in ovarian cancer. *Glycobiology* **26**, 1430–1431
- Beck, A., Wagner-Rousset, E., Ayoub, D., Van Dorsselaer, A., and Sanglier-Cianferani, S. (2013) Characterization of therapeutic antibodies and related products. *Anal. Chem.* **85**, 715–736
- Beck, A., Wagner-Rousset, E., Bussat, M. C., Lokteff, M., Klinguer-Hamour, C., Haeuw, J. F., Goetsch, L., Wurch, T., Van Dorsselaer, A., and Corvaia, N. (2008) Trends in glycosylation, glycoanalysis and glycoengineering of therapeutic antibodies and Fc-fusion proteins. *Curr. Pharm. Biotechnol.* **9**, 482–501
- Hecht, E. S., McCord, J. P., and Muddiman, D. C. (2015) Definitive screening design optimization of mass spectrometry parameters for sensitive comparison of filter and solid phase extraction purified, INLIGHT plasma N-glycans. *Anal. Chem.* **87**, 7305–7312
- Walker, S. H., Taylor, A. D., and Muddiman, D. C. (2013) Individuality normalization when labeling with isotopic glycan hydrazide tags (INLIGHT): a novel glycan-relative quantification strategy. *J. Am. Soc. Mass Spectr.* **24**, 1376–1384
- Hu, Y. L., Shihab, T., Zhou, S. Y., Wooding, K., and Mechref, Y. (2016) LC-MS/MS of permethylated N-glycans derived from model and human blood serum glycoproteins. *Electrophoresis* **37**, 1498–1505
- Mechref, Y., and Muddiman, D. C. (2017) Recent advances in glycomics,

- glycoproteomics and allied topics. *Anal. Bioanal. Chem.* **409**, 355–357
12. Zhou, S. Y., Hu, Y. L., Veillon, L., Snovidá, S. I., Rogers, J. C., Saba, J., and Mechref, Y. (2016) Quantitative LC-MS/MS glycomic analysis of biological samples using aminoxyTMT. *Anal. Chem.* **88**, 7515–7522
 13. Yang, N., Goonatilake, E., Park, D., Song, T., Fan, G. R., and Lebrilla, C. B. (2016) Quantitation of site-specific glycosylation in manufactured recombinant monoclonal antibody drugs. *Anal. Chem.* **88**, 7091–7100
 14. Hong, Q. T., Ruhaak, L. R., Stroble, C., Parker, E., Huang, J. C., Maverakis, E., and Lebrilla, C. B. (2015) A method for comprehensive glycosite-mapping and direct quantitation of serum glycoproteins. *J. Proteome Res.* **14**, 5179–5192
 15. Giorgetti, J., D'Atri, V., Canonge, J., Lechner, A., Guillarme, D., Colas, O., Wagner-Rousset, E., Beck, A., Leize-Wagner, E., and Francois, Y. N. (2018) Monoclonal antibody N-glycosylation profiling using capillary electrophoresis - Mass spectrometry: Assessment and method validation. *Talanta* **178**, 530–537
 16. Dong, Q., Yan, X., Liang, Y., and Stein, S. E. (2016) In-depth characterization and spectral library building of glycopeptides in the tryptic digest of a monoclonal antibody using 1D and 2D LC-MS/MS. *J. Proteome Res.* **15**, 1472–1486
 17. Wada, Y., Azadi, P., Costello, C. E., Dell, A., Dwek, R. A., Geyer, H., Geyer, R., Kakehi, K., Karlsson, N. G., Kato, K., Kawasaki, N., Khoo, K. H., Kim, S., Kondo, A., Lattova, E., Mechref, Y., Miyoshi, E., Nakamura, K., Narimatsu, H., Novotny, M. V., Packer, N. H., Perreault, H., Peter-Katalinic, J., Pohlentz, G., Reinhold, V. N., Rudd, P. M., Suzuki, A., and Taniguchi, N. (2007) Comparison of the methods for profiling glycoprotein glycans-HUPO Human Disease Glycomics/Proteome Initiative multi-institutional study. *Glycobiology* **17**, 411–422
 18. Wada, Y., Dell, A., Haslam, S. M., Tissot, B., Canis, K., Azadi, P., Backstrom, M., Costello, C. E., Hansson, G. C., Hiki, Y., Ishihara, M., Ito, H., Kakehi, K., Karlsson, N., Hayes, C. E., Kato, K., Kawasaki, N., Khoo, K. H., Kobayashi, K., Kolarich, D., Kondo, A., Lebrilla, C., Nakano, M., Narimatsu, H., Novak, J., Novotny, M. V., Ohno, E., Packer, N. H., Palaima, E., Renfrow, M. B., Tajiri, M., Thomsson, K. A., Yagi, H., Yu, S. Y., and Taniguchi, N. (2010) Comparison of methods for profiling O-glycosylation: Human Proteome Organisation Human Disease Glycomics/Proteome Initiative multi-institutional study of IgA1. *Mol. Cell. Proteomics* **9**, 719–727
 19. Thobhani, S., Yuen, C. T., Bailey, M. J., and Jones, C. (2009) Identification and quantification of N-linked oligosaccharides released from glycoproteins: an inter-laboratory study. *Glycobiology* **19**, 201–211
 20. Leymarie, N., Griffin, P. J., Jonscher, K., Kolarich, D., Orlando, R., McComb, M., Zaija, J., Aguilar, J., Alley, W. R., Altmann, F., Ball, L. E., Basumallick, L., Bazemore-Walker, C. R., Behnken, H., Blank, M. A., Brown, K. J., Bunz, S. C., Cairo, C. W., Cipollo, J. F., Daneshfar, R., Desaire, H., Drake, R. R., Go, E. P., Goldman, R., Gruber, C., Halim, A., Hathout, Y., Hensbergen, P. J., Horn, D. M., Hurum, D., Jabs, W., Larson, G., Ly, M., Mann, B. F., Marx, K., Mechref, Y., Meyer, B., Möginger, U., Neusüß, C., Nilsson, J., Novotny, M. V., Nyalwidhe, J. O., Packer, N. H., Pompach, P., Reiz, B., Resemann, A., Rohrer, J. S., Ruthenbeck, A., Sanda, M., Schulz, J. M., Schweiger-Hufnagel, U., Sihlbom, C., Song, E., Staples, G. O., Suckau, D., Tang, H., Thaysen-Andersen, M., Viner, R. I., An, Y., Valmu, L., Wada, Y., Watson, M., Windwarder, M., Whittall, R., Wuhrer, M., Zhu, Y., and Zou, C. (2013) Interlaboratory study on differential analysis of protein glycosylation by mass spectrometry: The ABRF Glycoprotein Research Multi-Institutional Study 2012. *Mol. Cell. Proteomics* **12**, 2935–2951
 21. Reusch, D., Habberger, M., Maier, B., Maier, M., Kloseck, R., Zimmermann, B., Hook, M., Szabo, Z., Tep, S., Wegstein, J., Alt, N., Bulau, P., and Wuhrer, M. (2015) Comparison of methods for the analysis of therapeutic immunoglobulin G Fc-glycosylation profiles-Part 1: Separation-based methods. *Mabs* **7**, 167–179
 22. Formolo, T., Ly, M., Levy, M., Kilpatrick, L., Lute, S., Phinney, K., Marzilli, L., Brorson, K., Boyne, M., Davis, D., and Schiel, J. (2015) Determination of the NISTmAb Primary Structure. In *State-of-the-Art and Emerging Technologies for Therapeutic Monoclonal Antibody Characterization Volume 2. Biopharmaceutical Characterization: The NISTmAb Case Study* (John E. Schiel, Darryl L. Davis, Oleg V. Borisov, eds.) **Chapter 1**, pp. 1–62, American Chemical Society
 23. Schiel, J. E., and Turner, A. (2018) The NISTmAb Reference Material 8671 lifecycle management and quality plan. *Anal. Bioanal. Chem.* **410**, 2067–2078
 24. De Leoz, M. L. A., Duewer, D. L., and Stein, S. E. (2017) NIST Interlaboratory Study on the Glycosylation of NISTmAb, a Monoclonal Antibody Reference Material. In *NIST Internal Report (NISTIR)*, 8186
 25. Varki, A., Cummings, R. D., Esko, J. D., Freeze, H. H., Stanley, P., Marth, J. D., Bertozzi, C. R., Hart, G. W., and Etzler, M. E. (2009) Symbol nomenclature for glycan representation. *Proteomics* **9**, 5398–5399
 26. Ceroni, A., Maass, K., Geyer, H., Geyer, R., Dell, A., and Haslam, S. M. (2008) GlycoWorkbench: a tool for the computer-assisted annotation of mass spectra of glycans. *J. Proteome Res.* **7**, 1650–1659
 27. de Jong, S. E., Selman, M. H., Adegnikia, A. A., Amoah, A. S., van Riet, E., Kruize, Y. C., Raynes, J. G., Rodriguez, A., Boakye, D., von Mutius, E., Knulst, A. C., Genuneit, J., Cooper, P. J., Hokke, C. H., Wuhrer, M., and Yazdanbakhsh, M. (2016) IgG1 Fc N-glycan galactosylation as a biomarker for immune activation. *Sci. Rep.* **6**, 28207
 28. Halim, A., Westerlind, U., Pett, C., Schorlemer, M., Ruetschi, U., Brinkmalm, G., Sihlbom, C., Lengqvist, J., Larson, G., and Nilsson, J. (2014) Assignment of saccharide identities through analysis of oxonium ion fragmentation profiles in LC-MS/MS of glycopeptides. *J. Proteome Res.* **13**, 6024–6032
 29. Yu, J., Schorlemer, M., Gomez Toledo, A., Pett, C., Sihlbom, C., Larson, G., Westerlind, U., Nilsson, J., and Distinctive, M. S. (2016) MS Fragmentation Pathways of Glycopeptide-Generated Oxonium Ions Provide Evidence of the Glycan Structure. *Chemistry* **22**, 1114–1124
 30. Pompach, P., Ashline, D. J., Brnakova, Z., Benicky, J., Sanda, M., and Goldman, R. (2014) Protein and Site Specificity of Fucosylation in Liver-Secreted Glycoproteins. *J. Proteome Res.* **13**, 5561–5569
 31. Prien, J. M., Stöckmann, H., Albrecht, S., Martin, S. M., Varatta, M., Furtado, M., Hosselet, S., Wang, M., Formolo, T., Rudd, P. M., and Schiel, J. E. (2015) Orthogonal Technologies for NISTmAb N-Glycan Structure Elucidation and Quantitation. In *State-of-the-Art and Emerging Technologies for Therapeutic Monoclonal Antibody Characterization Volume 2. Biopharmaceutical Characterization: The NISTmAb Case Study*. John E. Schiel, Darryl L. Davis, Oleg V. Borisov, eds.) **Chapter 4**, pp. 185–235, American Chemical Society
 32. Benedetti, E., Pucic-Bakovic, M., Keser, T., Wahl, A., Hassinen, A., Yang, J. Y., Liu, L., Trbojevic-Akmacic, I., Razzdorov, G., Stambuk, J., Klarlæ L., Ugrina, I., Selman, M. H. J., Wuhrer, M., Rudan, I., Polasek, O., Hayward, C., Grallert, H., Strauch, K., Peters, A., Meitinger, T., Gieger, C., Vilaj, M., Boons, G. J., Moremen, K. W., Ovchinnikova, T., Bovin, N., Kellokumpu, S., Theis, F. J., Lauc, G., and Krumsiek, J. (2017) Network inference from glycoproteomics data reveals new reactions in the IgG glycosylation pathway. *Nat. Commun.* **8**, 1483
 33. Pilobello, K. T., Krishnamoorthy, L., Slawek, D., and Mahal, L. K. (2005) Development of a lectin microarray for the rapid analysis of protein glycoproteins. *ChemBioChem* **6**, 985–989
 34. Duewer, D. L., Kline, M. C., Sharpless, K. E., Thomas, J. B., Gary, K. T., and Sowell, A. L. (1999) Micronutrients measurement quality assurance program: helping participants use interlaboratory comparison exercise results to improve their long-term measurement performance. *Anal. Chem.* **71**, 1870–1878
 35. Youden, W. J. (1959) Graphical diagnosis of interlaboratory test results. *Industrial Quality Control* **XV**, 29–33
 36. Shirono, K., Iwase, K., Okazaki, H., Yamazawa, M., Shikakume, K., Fukumoto, N., Murakami, M., Yanagisawa, M., and Tsugoshi, T. (2013) A study on the utilization of the Youden plot to evaluate proficiency test results. *Accredit. Qual. Assur.* **18**, 161–174
 37. Horwitz, W. (1982) Evaluation of analytical methods used for regulation of foods and drugs. *Anal. Chem.* **54**, 67–76
 38. Thompson, M., and Lowthian, P. J. (1997) The Horwitz function revisited. *J. AOAC. Int.* **80**, 676–679