

This document is published at:

Gallardo-Vara, E., Ruiz-Llorente, L., Casado-Vela, J., Ruiz-Rodríguez, M.J., López-Andrés, N., Pattnaik, A.K., ... y Bernabeu, C. (2019). Endoglin Protein Interactome Profiling Identifies TRIM21 and Galectin-3 as New Binding Partners. *Cells*, 8(9), 1082.

DOI: <https://doi.org/10.3390/cells8091082>



This work is licensed under a [Creative Commons Attribution 4.0 International License](https://creativecommons.org/licenses/by/4.0/).

Article

Endoglin Protein Interactome Profiling Identifies TRIM21 and Galectin-3 as New Binding Partners

Eunate Gallardo-Vara ^{1,†}, Lidia Ruiz-Llorente ^{1,†}, Juan Casado-Vela ^{2,†}, María J. Ruiz-Rodríguez ³, Natalia López-Andrés ⁴, Asit K. Pattnaik ⁵, Miguel Quintanilla ^{6,‡,*} and Carmelo Bernabeu ^{1,‡,*}

¹ Centro de Investigaciones Biológicas, Consejo Superior de Investigaciones Científicas (CSIC), and Centro de Investigación Biomédica en Red de Enfermedades Raras (CIBERER), 28040 Madrid, Spain

² Bioengineering and Aerospace Engineering Department, Universidad Carlos III and Centro de Investigación Biomédica en Red Enfermedades Neurodegenerativas (CIBERNED), Leganés, 28911 Madrid, Spain

³ Centro Nacional de Investigaciones Cardiovasculares (CNIC), Madrid 28029, Spain;

⁴ Cardiovascular Translational Research, Navarrabiomed, Complejo Hospitalario de Navarra (CHN), Universidad Pública de Navarra (UPNA), IdiSNA, 31008 Pamplona, Spain

⁵ School of Veterinary Medicine and Biomedical Sciences, and Nebraska Center for Virology, University of Nebraska-Lincoln, Nebraska 68583, USA

⁶ Instituto de Investigaciones Biomédicas “Alberto Sols”, Consejo Superior de Investigaciones Científicas (CSIC), and Departamento de Bioquímica, Universidad Autónoma de Madrid (UAM), 28029 Madrid, Spain

* Correspondence: bernabeu.c@cib.csic.es (C.B.); mquintanilla@iib.uam.es (M.Q.)

† These authors contributed equally to this work.

‡ Equal senior contribution.

Received: 7 August 2019; Accepted: 7 September 2019; Published: 13 September 2019

Abstract: Endoglin is a 180-kDa glycoprotein receptor primarily expressed by the vascular endothelium and involved in cardiovascular disease and cancer. Heterozygous mutations in the endoglin gene (ENG) cause hereditary hemorrhagic telangiectasia type 1, a vascular disease that presents with nasal and gastrointestinal bleeding, skin and mucosa telangiectases, and arteriovenous malformations in internal organs. A circulating form of endoglin (alias soluble endoglin, sEng), proteolytically released from the membrane-bound protein, has been observed in several inflammation-related pathological conditions and appears to contribute to endothelial dysfunction and cancer development through unknown mechanisms. Membrane-bound endoglin is an auxiliary component of the TGF- β receptor complex and the extracellular region of endoglin has been shown to interact with types I and II TGF- β receptors, as well as with BMP9 and BMP10 ligands, both members of the TGF- β family. To search for novel protein interactors, we screened a microarray containing over 9000 unique human proteins using recombinant sEng as bait. We find that sEng binds with high affinity, at least, to 22 new proteins. Among these, we validated the interaction of endoglin with galectin-3, a secreted member of the lectin family with capacity to bind membrane glycoproteins, and with tripartite motif-containing protein 21 (TRIM21), an E3 ubiquitin-protein ligase. Using human endothelial cells and Chinese hamster ovary cells, we showed that endoglin co-immunoprecipitates and co-localizes with galectin-3 or TRIM21. These results open new research avenues on endoglin function and regulation.

Keywords: endothelial cells; endoglin; TGF- β ; BMP; HHT; cancer; preeclampsia; TRIM family; galectin family; protein–protein interactions

1. Introduction

Endoglin is an auxiliary TGF- β co-receptor predominantly expressed in endothelial cells, which is involved in vascular development, repair, homeostasis, and disease [1–4]. Heterozygous mutations in the human ENDOGLIN gene (ENG) cause hereditary hemorrhagic telangiectasia (HHT) type 1, a vascular disease associated with nasal and gastrointestinal bleeds, telangiectases on skin and mucosa and arteriovenous malformations in the lung, liver, and brain [4–6]. The key role of endoglin in the vasculature is also illustrated by the fact that endoglin-KO mice die in utero due to defects in the vascular system [7]. Endoglin expression is markedly upregulated in proliferating endothelial cells involved in active angiogenesis, including the solid tumor neovasculature [8,9]. For this reason, endoglin has become a promising target for the antiangiogenic treatment of cancer [10–12]. Endoglin is also expressed in cancer cells where it can behave as both a tumor suppressor in prostate, breast, esophageal, and skin carcinomas [13–16] and a promoter of malignancy in melanoma and Ewing's sarcoma [17]. Ectodomain shedding of membrane-bound endoglin may lead to a circulating form of the protein, also known as soluble endoglin (sEng) [18–20]. Increased levels of sEng have been found in several vascular-related pathologies, including preeclampsia, a disease of high prevalence in pregnant women which, if left untreated, can lead to serious and even fatal complications for both mother and baby [2,18,19,21]. Interestingly, several lines of evidence support a pathogenic role of sEng in the vascular system, including endothelial dysfunction, antiangiogenic activity, increased vascular permeability, inflammation-associated leukocyte adhesion and transmigration, and hypertension [18,22–27]. Because of its key role in vascular pathology, a large number of studies have addressed the structure and function of endoglin at the molecular level, in order to better understand its mechanism of action.

Endoglin is a 180-kDa disulphide-linked homodimeric type I transmembrane glycoprotein that contains a large extracellular region (561 amino acids), a single hydrophobic transmembrane domain, and a short (47 amino acids) cytosolic tail [28,29]. As the extracellular region of endoglin comprises most (~88%) of the whole protein and is present in circulating sEng, which displays key relevant functions in vascular biology, several reports have analyzed its structure and interacting protein partners. Studies of the three-dimensional structure of the ectodomain of endoglin, using single particle electron microscopy [30], as well as X-ray crystallography [31] have revealed the presence of an N-terminal orphan region (OR), and a C-terminal bipartite zona pellucida (ZP) module. The conserved ZP module of endoglin is likely involved in polymerization of extracellular proteins, as reported for several ZP protein family members [31,32]. In addition, the endoglin ZP module contains an accessible arginine–glycine aspartic acid (RGD) sequence located in the ZP–N subdomain, which is a consensus binding motif for integrin recognition [28,31]. Notably, the RGD motif of membrane-bound and soluble endoglin appears to be actively involved in integrin-mediated cell adhesion, implicating, at least, $\alpha 5\beta 1$ and $\alpha v\beta 3$ integrin family members [24,25,33]. The orphan domain of endoglin is responsible for the binding with high affinity to members of the TGF- β family, namely BMP9 and BMP10 [31,34,35]. Furthermore, in line with the initially recognized role of endoglin as an essential co-receptor in TGF- β family signaling [4,36–39], the extracellular region of endoglin can simultaneously bind to BMP9 and the endothelial TGF- β type I receptor ALK1 [31,34,40]. Moreover, the ectodomain of endoglin specifically interacts with the TGF- β type I receptor ALK5 and with the TGF- β type II receptor [41,42]. Of note, the matrix metalloprotease 14 (MMP14 or MT1-MMP) can bind with and target the extracellular region of membrane-bound endoglin to release sEng (either alone or in complex with exosomes) upon proteolytic processing [22,23,42,43]. In addition, in the cancer setting, it has been shown that sEng associates with the receptor tyrosine kinase Met and antagonizes Met signaling in spindle carcinoma cells [44]. Nevertheless, the current knowledge about protein interactors of the endoglin ectodomain does not fully explain the exact molecular mechanisms of action involved in the complex cellular and pathophysiological roles of endoglin.

In this study, we screened a microarray containing over 9000 unique human proteins using recombinant sEng as bait. Among the 22 new putative high-affinity interactors identified, we demonstrated for the first time the specific interaction of endoglin with galectin-3, a secreted member of the lectin family with capacity to bind membrane glycoproteins, and with tripartite motif-

containing protein 21 (TRIM21), an E3 ubiquitin-protein ligase. Taken together, this proteomic study reveals novel avenues on endoglin function and regulation.

2. Materials and Methods

2.1. Cell-free Protein Microarrays

Protein interaction screening was carried out using the ProtoArray human protein Microarray v5.0 (Life Technologies), based on the nucleic acid programmable protein arrays (NAPPA) technology [45]. This microarray contains over 9000 unique human proteins individually purified and arrayed under native conditions to maximize functionality. Two replicate analyses were hybridized with purified recombinant human soluble endoglin (sEng; Glu26-Gly586; 1097-EN, R&D Systems). Arrays were then incubated with a mouse monoclonal antibody (mAb) against human endoglin (clone SN6h, Dako) and, after washing, with a rabbit antimouse secondary antibody coupled to horseradish peroxidase [HRP] (P0260, Dako). The specific binding signal was developed using SuperSignal™ West Pico Plus chemiluminescent substrate (34580, Thermo Fisher Scientific). Arrays were scanned using an Axon GenePix 4100A microarray reader with the GenePixPro 6.0 program and results analyzed with Prospector software (Invitrogen). After scanning, chemoluminescence in specific regions on the surface of arrays were measured and statistically analyzed using Z-scores [46], with the formula: $Z = (x - \mu)/\sigma$, where x is the raw value, μ the population mean, and σ the SD for the population. Only those proteins reaching a Z-score ≥ 2.0 in two independent protein arrays were considered as candidate bona fide interacting proteins for further validation analyses.

2.2. Cell Culture

All cell types were incubated routinely at 37 °C in a humidified atmosphere with 5% CO₂. Human umbilical vein-derived endothelial cells (HUVECs) were purchased from Lonza and used at early passages (3–5). HUVECs were grown on 0.2% gelatin (Sigma-Aldrich) pre-coated plates in endothelial basal medium (EBM2) supplemented with EGM2 SingleQuots (EBM2/EGM2 medium; Lonza). The Chinese hamster ovary cell line CHO-K1 was cultured in Dulbecco's modified Eagle's medium/Nutrient mixture F-12 medium (DMEM:F12). All cell media were supplemented with 10% heat-inactivated fetal bovine serum (FBS, Gibco), 2 mM L-glutamine, 100 U/mL penicillin, and 100 µg/mL streptomycin (Gibco), unless otherwise noted.

2.3. Plasmids and Cell Transfections

The following human endoglin expression vectors were used: pDisplay-HA-EngFL (full-length), pcEXV-HA-EngFL (full-length), pDisplay-HA-EngEC (extracellular region), pDisplay-HA-EngTMEC (transmembrane and extracellular regions), pDisplay-HA-Mock (empty vector; Ø) and pcEXV-Ø (empty vector; Ø), all of them previously described [25,37,41]. Some of these vectors encode endoglin constructs tagged with the human influenza hemagglutinin (HA) epitope, as indicated. Human TRIM21 or human galectin-3 were overexpressed using the pcDNA3.1-HA-hTRIM21 [47] or pcDNA3.1-Gal-3 [48], respectively. All plasmids were confirmed by sequencing (Secugen, Madrid). Transient transfections of CHO-K1 cells with plasmids were carried out using Lipofectamine 2000 (Invitrogen). Cells were analyzed after 48 h of transfection, for protein expression by Western blot.

2.4. Immunoprecipitation Assays

HUVECs or CHO-K1 cells were lysed in lysis buffer (1% NP-40, 0.5 mM NaF, 150 mM NaCl, 50 mM Tris/pH 7.4, and 1 mM phenylmethylsulfonyl fluoride (PMSF)), supplemented with protease (Roche) and phosphatase (Calbiochem) inhibitors. After 5 min of incubation at 4 °C, lysates were centrifuged at 10,000·g for 5 min and precleared using Protein G magnetic beads (PureProteome-Protein G magnetic beads, Millipore). Protein concentration of whole-cell extracts was measured using the Bradford quantification method (Bio-Rad protein Assay) in a Novaspek Plus Visible Spectrophotometer (GE Healthcare Life Sciences).

Immunoprecipitations (IPs) for Western blot analysis were carried out using Protein G magnetic beads incubated with the indicated primary antibodies. For galectin-3/endo glycin IP, mouse mAb anti-galectin-3 (IgG1, clone B2C10, sc-32790, Santa Cruz Biotech) and mouse mAb anti-HA (IgG1, clone CB051, #TA180128, Origin) were used. For TRIM21/endo glycin IP, rabbit mAb anti-TRIM21 (#92043, Cell Signaling Technology) and mouse mAb anti-endo glycin (P4A4, sc-20072, Santa Cruz Biotech) were used. In all cases, control immunoprecipitations with isotype-matched antibodies (Immunostep) were carried out. Antibodies were incubated with protein G magnetic beads for 10 min at room temperature, followed by several washes with PBS. Then, antibody-coupled protein G magnetic beads were incubated with total cell lysates (~0.5 mg) overnight at 4 °C. After washing with PBS, immunoprecipitates were further analyzed for Western blot analysis.

Co-IPs for proteomic analysis (mass spectrometry) were carried out by incubation of 1 mg of protein lysates with protein G-coated magnetic beads coupled with either the monoclonal antibody P4A4 anti-endo glycin (Developmental Studies Hybridoma Bank, The University of Iowa, US) or an isotype-matched (IgG2b) control antibody (Immunostep, Salamanca, Spain). An additional control with protein G magnetic beads in the absence of antibodies was also included. After extensive washing with PBS, immunoprecipitates were then subjected to mass spectrometry analysis.

2.5. Mass Spectrometry and Data Analysis

Samples from co-IPs were incubated overnight at 4 °C on a rotator, washed twice and then incubated with Laemmli buffer at 95°C for 5 min. Proteins eluted from each condition (P4A4, IgG2b, protein G) were analyzed by SDS-PAGE (10% polyacrilamide and 0.1% sodium dodecyl sulphate under nonreducing and albumin-free conditions, and then stained with colloidal Coomassie Brilliant Blue (G-250, Sigma). Each lane of gel was divided into small sections, followed by a standard digestion protocol with trypsin [49,50]. Peptides were trapped onto a C18-A1 ASY-Column (2 cm, ID100 µm, 5µm) (Thermo Fisher Scientific), and then eluted onto a Biosphere C18 column (75 µm, 16 cm, 3 µm) (NanoSeparations) and separated using a 110 min gradient min (90 min 0–35% Buffer B, 10 min 35–45% Buffer B, 4 min 45–95% Buffer B, 5 min 95% Buffer B, and 1 min 0% Buffer B) (Buffer A: 0.1% formic acid, 2% acetonitrile; Buffer B: 0.1% formic acid in acetonitrile) at a flow-rate of 200 nL/min on a nanoEasy HPLC (Proxeon) coupled to a nanoelectrospray (Thermo Fisher Scientific). Mass spectra were acquired on an LTQ-Orbitrap Velos mass spectrometer (Thermo Fisher Scientific) in the positive ion mode. Full-scan MS spectra (m/z 400–2000) were acquired in the Orbitrap at a resolution of 60,000, and the 15 most intense ions were selected for collision-induced dissociation (CID) fragmentation in the linear ion trap with a normalized collision energy of 35%. Singly charged ions and unassigned charge states were rejected. Dynamic exclusion was enabled with an exclusion duration of 30 s. Mass spectra *.raw files were searched against the human SwissProt 2016_10 database (20,121 sequence protein entries) using the MASCOT search engine (version 2.3, Matrix Science). Precursor and fragment mass tolerance were set to 10 ppm and 0.5 Da, respectively, allowing 2 missed cleavages, N-terminal, carbamidomethylation of cysteines as a fixed modification and methionine oxidation as a variable modification. Identified peptides were validated using Percolator

algorithm with a q-value threshold of 0.01 [51]. Peptides found in the analysis, which covered $\geq 2\%$ of a specific protein region, allowed identifying the proteins present in the sample. These proteins were then subjected to String-protein database version 11 to analyze possible interactions already described, between them. The protein identification by nLC-MS/MS was carried out by the Proteomics and Genomics Facility of Biological Research Center (Centro de Investigaciones Biológicas; CIB-CSIC), a member of the ProteoRed-ISCI network.

2.6. Western Blot Analysis

Total cell lysates or immunoprecipitates were separated by SDS-PAGE on 10% acrylamide gels under reducing or nonreducing conditions, and resolved proteins were electrotransferred to polyvinylidene difluoride (PVDF) or nitrocellulose membranes using the semidry system iBlot Gel transfer (Invitrogen). Then, membranes were blocked with TBS buffer (0.1% Tween, 5% BSA) for 1 h at room temperature and immunoblotted with primary antibodies, as indicated. For galectin-3/endoglin IP, anti-galectin-3 (biotinylated polyclonal goat IgG; BAF1154, R&D Systems) and anti-endoglin (rabbit mAb, clone EPR10145-12, Abcam), antibodies were used. For TRIM21/endoglin IP, anti-TRIM21 (rabbit mAb #92043, Cell Signaling Technology), or anti-HA (mouse mAb, clone CB051, #TA180128, OriGene) antibodies were used. Loading control antibodies were also included (anti- β -actin; A-1978, Sigma). Incubation with the primary antibodies was carried out overnight at 4 °C. The next day, membranes were washed and incubated in TBS with the specific secondary antibodies coupled to HRP, rabbit anti-mouse (1:1000 dilution; P0260, Dako) or goat anti-rabbit (1:1000 dilution; P0448, Dako), or with streptavidin-HRP conjugate (1.5 $\mu\text{g}/\text{mL}$; SA10001, Thermo Fisher Scientific). Protein bands were revealed using SuperSignal™ West Pico Plus chemiluminescent substrate (34580, Thermo Fisher Scientific) to enhance signal, following the manufacturer's protocol. Bands were visualized and quantified using the Molecular Imager® Gel Doc™ XR+ System with Image Lab software (Bio-Rad).

2.7. Immunofluorescence Microscopy

HUVECs were grown to confluence in 12 mm diameter coverslips, previously coated with 0.2% gelatin (Sigma-Aldrich) in PBS. Cells were fixed with 3% paraformaldehyde in PBS and permeabilized with 0.1% Triton X-100 during 10 min at room temperature. HUVECs were blocked with PBS containing either 2% BSA (galectin-3) or 1% BSA plus 5% normal goat serum [NGS] (TRIM21). In order to monitor the co-localization of endoglin with TRIM21 or galectin-3, samples were incubated first with the mouse monoclonal antibody anti-human endoglin (P4A4; sc-20072, Santa Cruz Biotech). After washing twice with PBS, samples were incubated with antibodies, anti-TRIM21 (rabbit mAb #92043, Cell Signaling Technology) or anti-galectin-3 (rabbit polyclonal IgG, #PA5-34819, Thermo Fisher Scientific). Then, after several washing steps with PBS, cells were incubated with the secondary antibodies Alexa 488 goat anti-mouse IgG or Alexa 647 goat anti-rabbit IgG. To visualize the samples and for nuclear staining, slides were mounted in Prolong-DAPI (4',6-diamidino-2-phenylindole) reagent (Molecular Probes, Invitrogen). Samples were observed using a SP5 fluorescence confocal microscope (DMI6000 CS Leica Microsystems).

2.8. Bio-Layer Interferometry Measurements

Protein-protein interactions were measured by bio-layer interferometry using a single channel BLItz system (ForteBio BLItz®). Recombinant human endoglin/CD105 protein (1097-EN-025, R&D) was diluted to a final concentration of 250 $\mu\text{g}/\text{mL}$ in PBS containing 0.1% BSA. Recombinant proteins tagged with 6xHis were resuspended following the manufacturer's recommendations. Human full-length TRIM21 protein (RO52; 6His-tag, N-terminus, LSBio) was diluted to a final concentration of 250 $\mu\text{g}/\text{mL}$ in 0.2 M Tris/pH 7.4 + 25% glycerol buffer. Human full-length galectin-3 protein tagged at the C-terminus (LGALS3; 6His-tag, LS-G39216, LSBio) or the N-terminus (LS-G26359; 6His-tag, LSBio) were diluted in distilled water or 10% glycerol in PBS/pH 7.4, respectively, to a final

concentration of 100–200 µg/mL. The 6His-tagged proteins (galectin-3 or TRIM21) were immobilized on Ni-NTA (Nickel-nitrilotriacetic acid) biosensor tips and 4.1 µM soluble endoglin, or its corresponding control buffer was added to the biosensor to measure the endoglin-TRIM21 or endoglin-galectin-3 binding. Each binding reaction was carried out first with a 30 sec baseline (buffer), followed by a 300 s association phase (protein binding) and a 300 s dissociation phase (buffer only). Assays were performed by duplicate, and binding graphs were constructed by representing the experimental interferometry binding values (nm) and the duration of experiment run (sec). BLItz Pro software was used to analyze the data.

2.9. Statistical Analysis

All quantified results are shown as mean ± SD. Differences in mean values were analyzed using Student's t test. Asterisks indicate statistically significant values between selected conditions (* $p < 0.05$; ** $p < 0.01$; *** $p < 0.005$; ns not significant).

3. Results

3.1. Identification of Human Proteins Interacting with Endoglin Using Cell-Free Protein Microarray Technology

Recombinant sEng, encompassing the extracellular domain of human endoglin, was probed twice against a commercially available microarray that contains over 9000 unique human proteins individually purified and arrayed (Microarray v5.0, Life Technologies). Among these, we identified 22 proteins common to both replicates, strongly interacting with endoglin (Table 1). The stringent list of potential interactors was selected by imposing a Z-score ≥ 2.0 as a threshold.

Table 1. Human protein-array analysis of endoglin interactors¹.

Accession #	Protein name	Cellular compartment
NM_172160.1 Q14722	Potassium voltage-gated channel, shaker-related subfamily, beta member 1 (KCNAB1), transcript variant 1	Plasma membrane
NM_138565.1 Q14247	Cortactin (CTTN), transcript variant 2	Plasma membrane
BC036123.1 Q8IYB5	Stromal membrane-associated protein 1 (SMAP1)	Plasma membrane
NM_173822.1 Q8IXS8	Family with sequence similarity 126, member B (FAM126B)	Plasma membrane, cytosol
BC047536.1 O95171	Sciellin (SCEL)	Plasma membrane, extracellular or secreted
BC068068.1 P17931	Galectin-3	Plasma membrane, mitochondrion, nucleus, extracellular or secreted
BC001247.1 O14639	Actin-binding LIM protein 1 (ABLIM1)	Cytoskeleton
NM_198943.1 Q6VEQ5	Family with sequence similarity 39, member B (FAM39B)	Endosome, cytoskeleton
NM_005898.4 Q14444	Cell cycle associated protein 1 (CAPRIN1), transcript variant 1	Cytosol
BC002559.1 Q9Y5A9	YTH domain family, member 2 (YTHDF2)	Nucleus, cytosol
NM_003141.2 P19474	Tripartite motif-containing 21 (TRIM21)	Nucleus, cytosol
BC025279.1 Q14151	Scaffold attachment factor B2 (SAFB2)	Nucleus
BC031650.1 Q8TEC5	Putative E3 ubiquitin-protein ligase SH3RF2	Nucleus

BC034488.2 Q8NE71	ATP-binding cassette, sub-family F (GCN20), member 1 (ABCF1)	Nucleus
BC040946.1 Q9P013	Spliceosome-associated protein CWC15 homolog (HSPC148)	Nucleus
NM_003609.2 Q9BW71	HIRA interacting protein 3 (HIRIP3)	Nucleus
NM_005572.1 P02545	Lamin A/C (LMNA), transcript variant 2	Nucleus
NM_006479.2 Q96B01	RAD51 associated protein 1 (RAD51AP1)	Nucleus
NM_014321.2 Q9Y5N6	Origin recognition complex, subunit 6 like (yeast) (ORC6L)	Nucleus
NM_015138.2 Q92541	RNA polymerase-associated protein RTF1 homolog (RTF1)	Nucleus
NM_032141.1 Q9H0G5	Coiled-coil domain containing 55 (CCDC55), transcript variant 1	Nucleus
BC012289.1 Q5JSZ5	Protein PRRC2B, KIAA0515	Data not available

¹ Microarrays containing over 9000 unique human proteins were screened using recombinant sEng as a probe. Protein interactors showing the highest scores (Z-score ≥ 2.0) are listed. GeneBank (<https://www.ncbi.nlm.nih.gov/genbank/>) and UniProtKB (<https://www.uniprot.org/help/uniprotkb>) accession numbers are indicated with a yellow or green background, respectively. The cellular compartment of each protein was obtained from the UniProtKB webpage. Proteins selected for further studies (TRIM21 and galectin-3) are indicated in bold type with blue background.

Although the probe encoded the extracellular domain of endoglin, gene ontology analyses revealed that the selected proteins were located in different subcellular compartments, including the cytoplasm, nucleus, membrane, and extracellular subsets. Putative endoglin interactors included cytoskeletal components, ion channels, soluble factors, ubiquitin-ligases, RNA polymerases, extracellular matrix proteins, and membrane receptors, among others (Table 1). Among these, galectin-3 and TRIM21 were selected for validation due their involvement in several biological functions shared by endoglin.

3.2. Galectin-3 Interacts with Endoglin in Cells.

Galectin-3 is a secreted member of the lectin family with the capacity to bind membrane glycoproteins like endoglin and is involved in the pathogenesis of many human diseases [52]. We confirmed the protein screen data for galectin-3, as evidenced by two-way co-immunoprecipitation of endoglin and galectin-3 upon co-transfection in CHO-K1 cells. As shown in Figure 1A, galectin-3 and endoglin were efficiently transfected, as demonstrated by Western blot analysis in total cell extracts. No background levels of endoglin were observed in control cells transfected with the empty vector (\emptyset). By contrast, galectin-3 could be detected in all samples but, as expected, showed an increased signal in cells transfected with the galectin-3 expression vector. Co-immunoprecipitation studies of these cell lysates showed that galectin-3 was present in endoglin immunoprecipitates (Figure 1B). Conversely, endoglin was also detected in galectin-3 immunoprecipitates (Figure 1C).

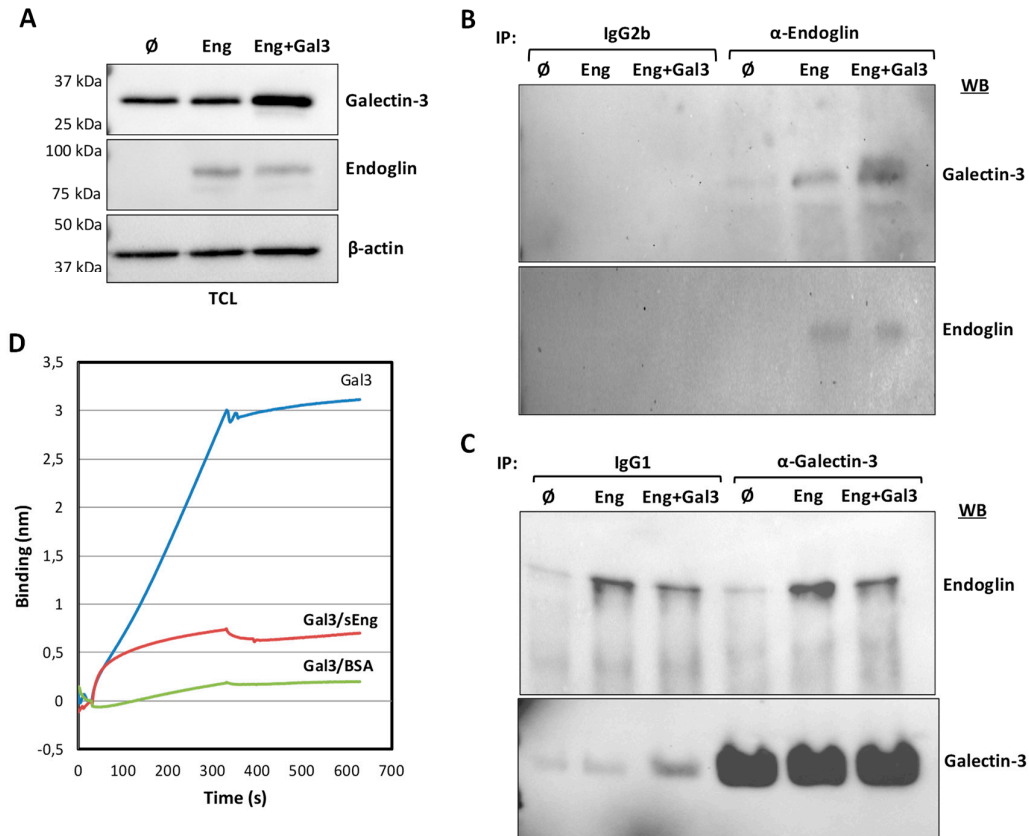


Figure 1. Protein–protein association between galectin-3 and endoglin. **A–C.** Co-immunoprecipitation of galectin-3 and endoglin. CHO-K1 cells were transiently transfected with pcEXV-∅ (∅), pcEXV-HA-EngFL (Eng) and pcDNA3.1-Gal-3 (Gal3) expression vectors. **A.** Total cell lysates (TCL) were analyzed by SDS-PAGE under reducing conditions, followed by Western blot (WB) analysis using specific antibodies to endoglin, galectin-3 and β-actin (loading control). Cell lysates were subjected to immunoprecipitation (IP) with anti-endoglin (**B**) or anti-galectin-3 (**C**) antibodies, followed by SDS-PAGE under reducing conditions and WB analysis with anti-endoglin or anti-galectin-3 antibodies, as indicated. Negative controls with an IgG2b (**B**) and IgG1 (**C**) were included. **D.** Protein–protein interactions between galectin-3 and endoglin using Bio-layer interferometry (BLITZ). The Ni-NTA biosensors tips were loaded with 7.3 μM recombinant human galectin-3/6xHis at the C-terminus (LGALS3), and protein binding was measured against 0.1% BSA in PBS (negative control) or 4.1 μM soluble endoglin (sEng). Kinetic sensorgrams were obtained using a single channel ForteBioBLITZ™ instrument.

Next, we analyzed the interaction between galectin-3 and endoglin by biolayer interferometry [53,54] as implemented in the BLITZ™ instrument, which allows kinetic analysis of protein–protein interactions using small amounts of protein. Galectin-3 with a 6His-tag at the C-terminus was immobilized on Ni-NTA biosensor tips, protein interactions were measured against soluble endoglin or its corresponding control buffer, and the association kinetics was monitored. As shown in Figure 1D, a specific interaction between endoglin and galectin-3 is visualized as compared to the background signal. Interestingly, similar experiments using galectin-3 with a 6His-tag at the N-terminus did not display any specific interaction with endoglin (data not shown), suggesting that the N-terminus of galectin-3 shelters the binding domain of endoglin.

The interaction and association results between galectin-3 and endoglin shown above, prompted us to test whether galectin-3 co-localized with membrane-bound endoglin at the cellular level.

Supporting this hypothesis, co-localization of endogenous galectin-3 and endoglin in the plasma membrane of HUVECs under basal conditions was observed by confocal microscopy (Figure 2).

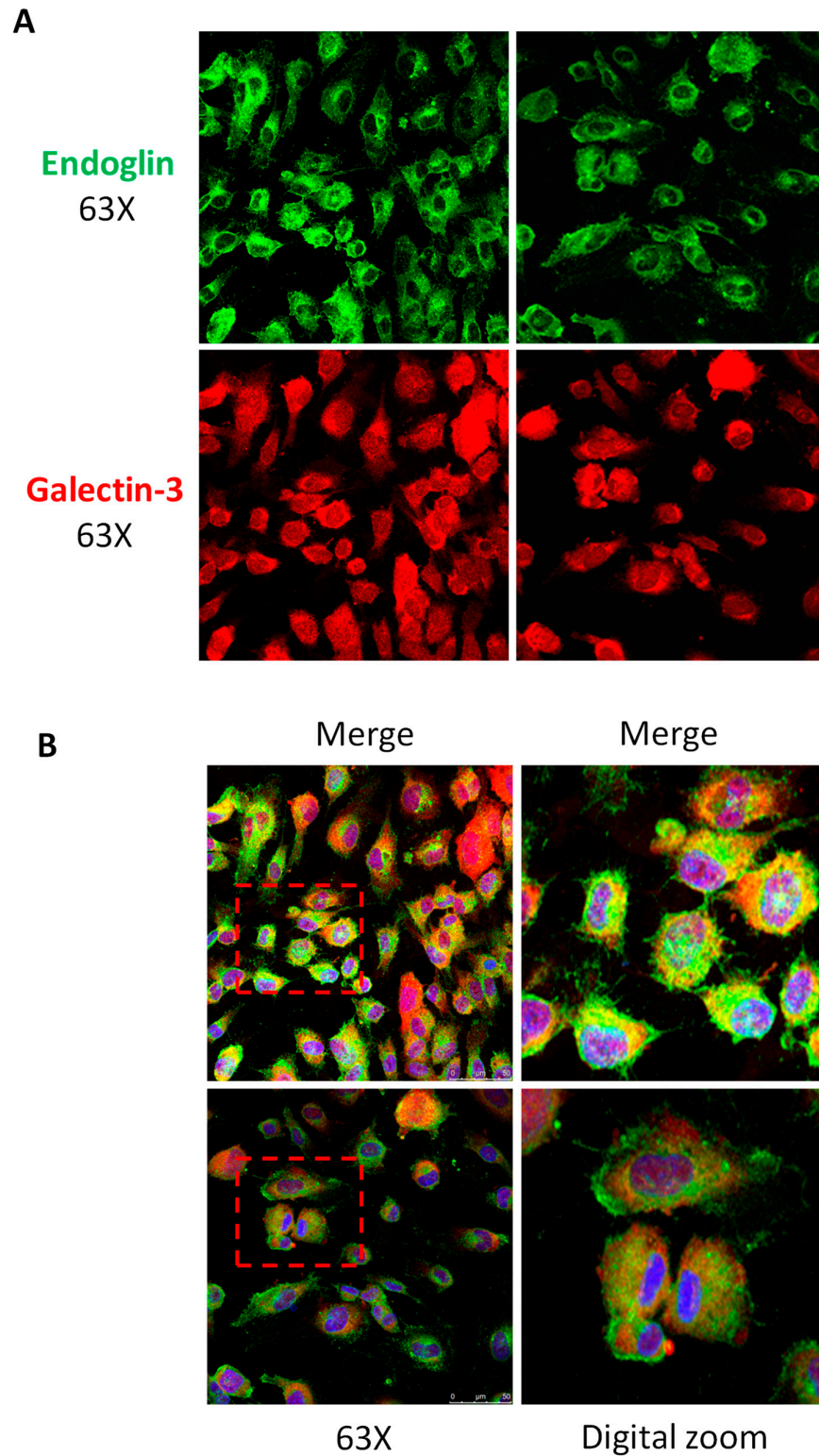


Figure 2. Galectin-3 and endoglin co-localize in human endothelial cells. Human umbilical vein-derived endothelial cell (HUVEC) monolayers were fixed with paraformaldehyde, permeabilized with Triton X-100, incubated with the mouse mAb P4A4 anti-endoglin, washed, and incubated with

a rabbit polyclonal anti-galectin-3 antibody (PA5-34819). Galectin-3 and endoglin were detected by immunofluorescence upon incubation with Alexa 647 goat anti-rabbit IgG (red staining) and Alexa 488 goat anti-mouse IgG (green staining) secondary antibodies, respectively. **(A)** Single staining of galectin-3 (red) and endoglin (green) at the indicated magnifications. **(B)** Merge images plus DAPI (nuclear staining in blue) show co-localization of galectin-3 and endoglin (yellow color). Representative images of five different experiments are shown.

Immunostaining of galectin-3 was detected at the membrane and intracellular compartments, whereas endoglin signal was mainly located at the cell surface (Figure 2A). Some of these cells showed a clear membrane co-localization of galectin-3 and endoglin, as depicted in the merged images (Figure 2B, yellow staining). Because both endoglin and galectin-3 are expressed by endothelial cells [28,52], their additional co-localization within the same secretory pathway (for example in the Golgi) cannot be excluded. This would be compatible with the occasional perinuclear yellow staining observed (Figure 2B). Control labeling in the absence of primary antibodies did not show any positive signals (Supplementary Figure S1), ruling out a potential artifact of immunofluorescent secondary antibodies. Taken together, the above results demonstrate the interaction and association between galectin-3 and endoglin.

3.3. TRIM21 Interacts with Endoglin in Cells

The TRIM family is a highly conserved group of E3 ubiquitin ligase proteins that have been implicated in the regulation of the TGF- β -dependent cellular, as well as in the ubiquitination and degradation of several components of TGF- β signaling pathway [55]. Unfortunately, little is known about the connection between the TRIM family and the TGF- β auxiliary receptor endoglin of endothelial cells. Among TRIM family members, TRIM21 acts not only as an E3 ubiquitin ligase on different target proteins, but also as a substrate in auto-ubiquitination, both leading to protein degradation [56–58]. In addition, TRIM21 is involved in cancer [59,60], inflammation [61–64], intracellular immunity, and autoimmunity [47,65–67]. Here, we validated the protein screen data for TRIM21, using two-way co-immunoprecipitation analysis of endoglin and TRIM21 in HUVECs and co-transfected CHO-K1 cells (Figure 3).

Endoglin and TRIM21 were readily detected in whole HUVECs lysates, as shown by WB analysis (Figure 3A). Co-immunoprecipitation studies of these lysates showed that endoglin was present in TRIM21 immunoprecipitates, but not in a negative control (Figure 3B). In our hands, TRIM21 could not be detected in endoglin immunoprecipitates from HUVECs (data not shown). For this reason, a proteomic approach was used. Thus, HUVEC lysates were subjected to immunoprecipitation with anti-endoglin antibodies, and the total proteins associated with immunoprecipitates were separated by SDS-PAGE, followed by trypsin digestion and proteomic analysis by mass spectrometry. As shown in Supplementary Table 1, TRIM21 was found among the putative endoglin-interacting proteins identified by this technique. Further support for the endoglin/TRIM21 association was obtained from co-transfection experiments in CHO-K1 cells (Figure 3C,D). Figure 3C shows that endoglin and TRIM21 were clearly expressed upon transfection of CHO-K1 cells, as evidenced by WB analysis of total cell extracts. Co-immunoprecipitation studies of these cell lysates showed that endoglin was present in TRIM21 immunoprecipitates (Figure 3D, upper panel). Conversely, TRIM21 was detected in endoglin immunoprecipitates, as shown by WB analysis (Figure 3D, lower panel). In addition, co-immunoprecipitation studies of CHO-K1 cells, previously co-transfected with TRIM21 and two different truncated constructs (pDisplay-HA-EngEC and pDisplay-HA-EngTMEC), both devoid of the cytoplasmic tail of endoglin, revealed that these mutant proteins were present in TRIM21 immunoprecipitates, suggesting that the cytoplasmic domain of endoglin is not required for interaction with TRIM21 (Figure 3E).

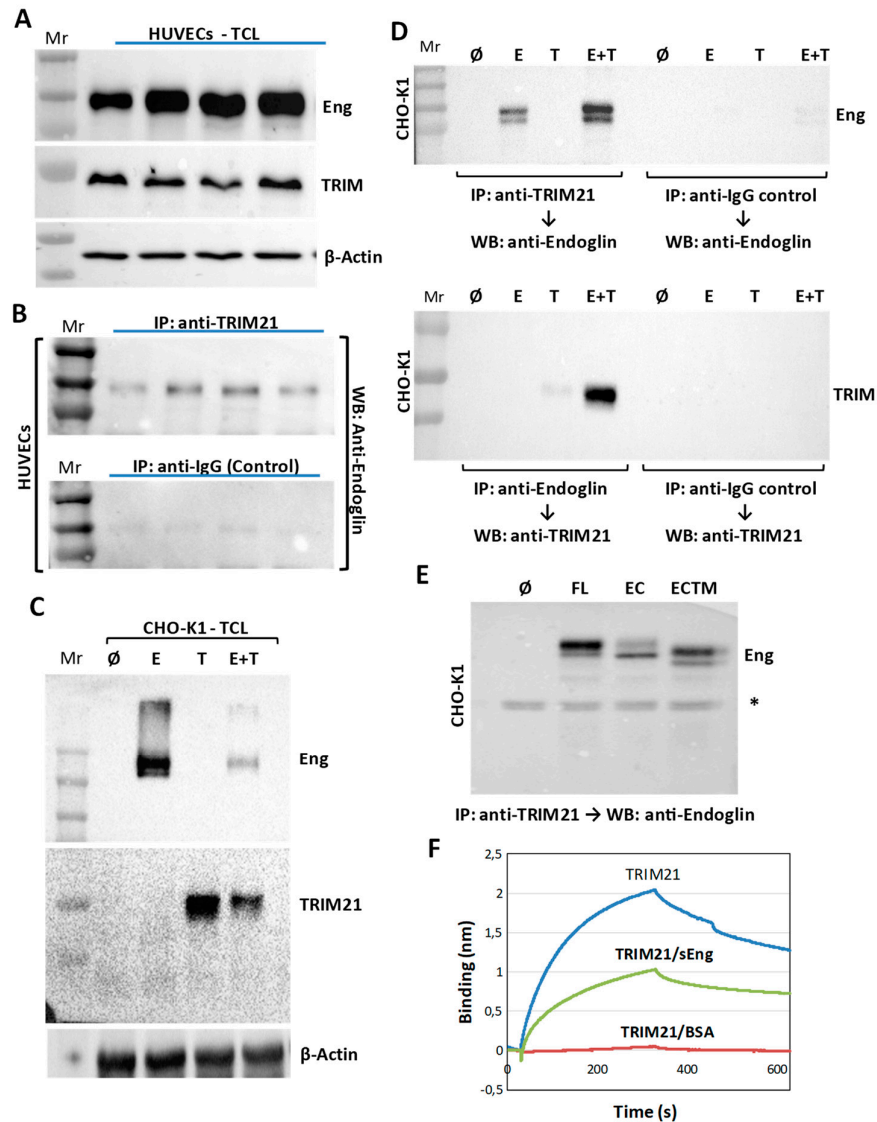


Figure 3. Protein–protein association between TRIM21 and endoglin. (A–E) Co-immunoprecipitation of TRIM21 and endoglin. A,B. HUVEC monolayers were lysed and total cell lysates (TCL) were subjected to SDS-PAGE under reducing (for TRIM21 detection) or nonreducing (for endoglin detection) conditions, followed by Western blot (WB) analysis using antibodies to endoglin, TRIM21 or β -actin (A). HUVECs lysates were subjected to immunoprecipitation (IP) with anti-TRIM21 or negative control antibodies, followed by WB analysis with anti-endoglin (B). C,D. CHO-K1 cells were transiently transfected with pDisplay–HA–Mock (\emptyset), pDisplay–HA–EngFL (E) or pcDNA3.1–HA–hTRIM21 (T) expression vectors, as indicated. Total cell lysates (TCL) were subjected to SDS-PAGE under nonreducing conditions and WB analysis using specific antibodies to endoglin, TRIM21, and β -actin (C). Cell lysates were subjected to immunoprecipitation (IP) with anti-TRIM21 or anti-endoglin antibodies, followed by SDS-PAGE under reducing (upper panel) or nonreducing (lower panel) conditions and WB analysis with anti-TRIM21 or anti-endoglin antibodies. Negative controls of appropriate IgG were included (D). E. CHO-K1 cells were transiently transfected with pcDNA3.1–HA–hTRIM21 and pDisplay–HA–Mock (\emptyset), pDisplay–HA–EngFL (FL; full-length), pDisplay–HA–EngEC (EC; cytoplasmic-less) or pDisplay–HA–EngTMEC (TMEC; cytoplasmic-less) expression vectors, as indicated. Cell lysates were subjected to immunoprecipitation with anti-TRIM21, followed by SDS-PAGE under reducing conditions and WB analysis with anti-endoglin antibodies, as indicated. The asterisk indicates the presence of a nonspecific band. Mr, molecular reference; Eng, endoglin; TRIM, TRIM21. (F) Protein–protein interactions between TRIM21 and endoglin using Bio-

layer interferometry (BLItz). The Ni-NTA biosensors tips were loaded with 5.4 μM recombinant human TRIM21/6xHis at the N-terminus (R052), and protein binding was measured against 0.1% BSA in PBS (negative control) or 4.1 μM soluble endoglin (sEng). Kinetic sensorgrams were obtained using a single channel ForteBioBLItzTM instrument.

Further evidence for the interaction between TRIM21 and endoglin was obtained by biolayer interferometry. The 6His-tagged TRIM21 was immobilized on Ni-NTA biosensor tips, and protein interactions were measured against soluble endoglin or its corresponding control buffer (Figure 3F). The association kinetics was monitored, revealing a specific interaction between TRIM21 and endoglin, as compared to the background signal of BSA.

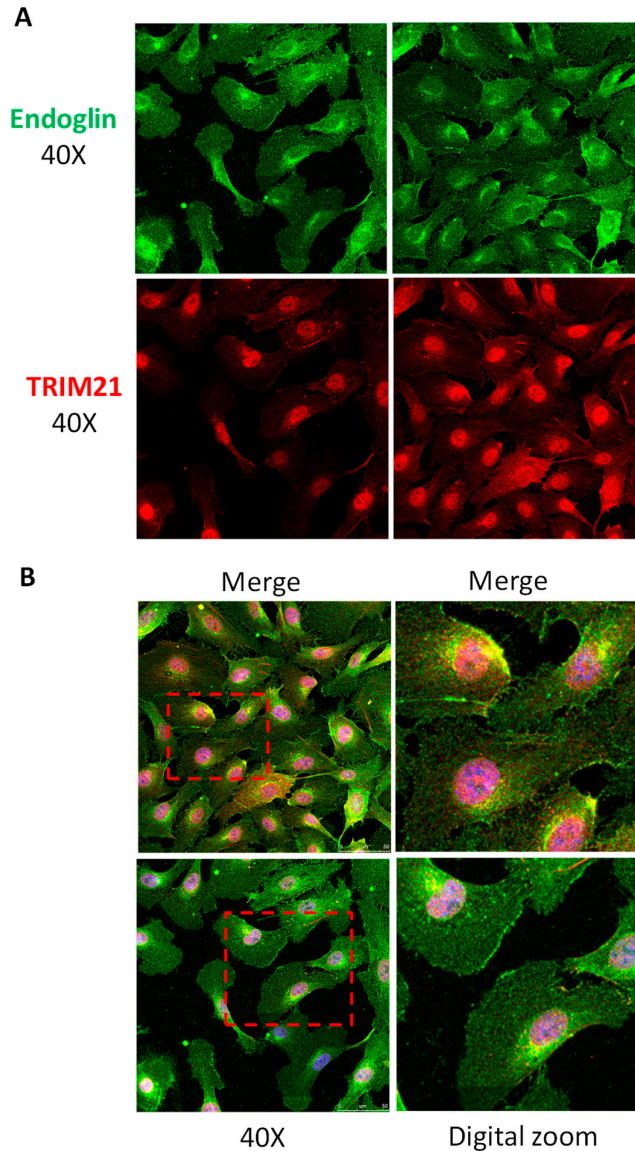


Figure 4. TRIM21 and endoglin co-localize in human endothelial cells. HUVEC monolayers were fixed with paraformaldehyde, permeabilized with Triton X-100, incubated with the mouse mAb P4A4 anti-endoglin, washed and incubated with a rabbit monoclonal anti-TRIM21 antibody (#92043). TRIM21 and endoglin were detected by immunofluorescence upon incubation with Alexa 647 goat anti-rabbit IgG (red staining) and Alexa 488 goat anti-mouse IgG (green staining) secondary antibodies, respectively. (A) Single staining of TRIM21 (red) and endoglin (green) at the indicated

magnifications. **(B)** Merge images plus DAPI (nuclear staining in blue) show co-localization of TRIM21 and endoglin (yellow color). Representative images of four different experiments are shown.

Next, we tested whether TRIM21 co-localized with membrane-bound endoglin at the cellular level. As shown by confocal microscopy, immunostaining of TRIM21 was detected at the nucleus, membrane, and cytosolic compartments, whereas endoglin signal was mainly located at the cell surface (Figure 4). Endogenous TRIM21 and endoglin co-localized in the plasma membrane of HUVECs under basal conditions (Figure 4A). As depicted in the merged images (Figure 4B, yellow staining), some cells showed a clear membrane and perinuclear co-localization of TRIM21 and endoglin. Control labeling in the absence of primary antibodies did not show any positive signal (Figure S1), ruling out a potential artifact of immunofluorescent secondary antibodies.

Taken together, the above results demonstrate for the first time the interaction and association between TRIM21 and endoglin.

4. Discussion

The protein array screening allowed us to test a total of >9000 putative interactions with the extracellular region of endoglin using commercially available sEng. This is at variance with other screening studies which have previously used either the cytoplasmic region of endoglin or the full-length protein as a bait [9,68–71]. Here, we identified 22 interactors that passed our stringent criteria. They are located in different subcellular compartments, including plasma membrane, cytosol, cytoskeleton or extracellular secreted proteins. Surprisingly, some of the identified interactors are not membrane or secreted proteins, something that would be expected from the extracellular region of a type I membrane protein as endoglin. Several interactors are located in the nucleus, suggesting a yet-to-discover function for endoglin. Compatible with this hypothesis, endoglin deficiency or overexpression in human cells can regulate the expression of a wide range of target genes at the transcriptional level [72–74]. While the localization of endoglin in the nucleus has not been demonstrated, the intriguing functional impact of endoglin interactions with the newly identified nuclear partners remains to be explored.

Here we have confirmed the interaction between endoglin and two previously unrecognized partners, galectin-3 and TRIM21. Endoglin is a glycoprotein with several consensus N- and O- linked glycosylation sites [28]. Therefore, its capacity to bind galectin-3 fully agrees with the fact that this lectin contains a carbohydrate-recognition-binding domain involved in the interaction with different membrane glycoproteins [52]. Given the key role of endoglin in the vascular system, one of the reasons for choosing galectin-3 was its widely reported involvement in cardiovascular disease, including cardiac fibrosis and inflammation, pathological angiogenesis, aortic stenosis, abdominal aortic aneurysm, endothelial dysfunction, cardiovascular remodeling or hypertension [75–80]. Interestingly, both galectin-3 and endoglin can be expressed as a secreted biomarker in circulation and both have been involved in endothelial dysfunction and inflammation. Galectin-3 has been reported to exacerbate endothelial dysfunction via oxidized-LDL [79] and likely through oxidized-HDL-induced LOX-1 activation [81]. Further, sEng synergizes with hypercholesterolemia to aggravate endothelial and vessel wall dysfunction [26]. Interestingly, galectin-3 and sEng are increased in preeclampsia a systemic syndrome associated with inflammation, endothelial dysfunction and anti-angiogenic activity [18,43,82]. Additionally, galectin-3 and sEng regulate endothelial cell migration and angiogenic activity [22,83–86]. Because abnormal levels of galectin-3 and sEng are found in several endothelium-related pathological conditions, these results suggest that these soluble proteins may associate with each other, acting in concert to regulate endothelial function in vascular-related pathologies. In this regard, the galectin-3/endoglin interaction in the endothelial context is supported by a recent and preliminary work where endoglin was identified, among other glycoproteins, after a purification process of HUVEC extracts through a galectin-3 affinity column [86]. In addition, galectin-3 was detected in endoglin immunoprecipitates from lysates of HUVECs previously treated with recombinant galectin-3 [87]. Galectin-3 is a relatively abundant component of the tumor microenvironment, where it has been found to regulate critical aspects of cancer biology,

such as metastasis, apoptosis, and immune surveillance [88]. Since elevated levels of sEng are also found in different types of cancer [9,89], it is tempting to speculate on the involvement of sEng/galectin-3 interaction in tumor progression and metastasis.

We have also shown that endoglin can interact with TRIM21, a protein involved in multiple cell functions. As other members of the TRIM family, TRIM21 can act as a ubiquitination enzyme targeting for degradation different proteins [56–58,90]. The TRIM family has been shown to ubiquitinate different components of the TGF- β signaling pathway [55,91], and our results suggest for the first time that TRIM21 may target for degradation the TGF- β auxiliary receptor endoglin. This interesting line of research should be explored in future experiments and may be key to understanding the described long half-life of this relatively stable glycoprotein [92]. Several reports have shown the involvement of TRIM21 in cancer development [58–60,93], a characteristic shared by other TRIM family members [55] and, interestingly, by endoglin [9,89]. TRIM21 functions as a tumor suppressor in breast cancer and high expression levels of TRIM21 are associated with longer overall survival of breast cancer patients [58,60]. Notably, a similar role for endoglin as a tumor suppressor in breast, prostate, esophageal, and skin carcinomas has been described [13–16]. These data suggest that, upon interacting with each other, endoglin and TRIM21 may act in concert to regulate cancer development. In line with this, both TRIM21 [58] and endoglin [94] appear to induce the epithelial–mesenchymal transition (EMT), a key process in cancer development. In addition, galectin-3 can also induce the mesenchymal transition of endothelial cells [95]. Another interesting finding of our studies is the presence of TRIM21 in endothelial cells, considering that the expression and function of TRIM21 in this cell lineage has been poorly addressed so far. Very recently, it has been reported that TRIM21 from human lung endothelial cells displays a modulatory role during the inflammatory response to lipopolysaccharide (LPS), suggesting that TRIM21 is a potential therapeutic target in sepsis-induced endothelial dysfunction [96,97]. Similarly, endothelial endoglin, which is markedly increased during inflammation [2,98], regulates several inflammation-related processes such as LPS-induced leukocyte extravasation [24] or cell-mediated vascular repair [99]. In addition, patients with septic shock present higher levels of circulating sEng compared to healthy individuals [100], while it has been reported that sEng contributes to endothelial dysfunction in animal models [26,27]. Further studies are needed to elucidate the exact role that the TRIM21/endoglin interaction plays in the complex role of endothelial cells during the inflammatory process.

5. Conclusions

In summary, here we identified more than twenty novel interactors of the extracellular region of endoglin, of which endoglin/galectin-3 and endoglin/TRIM21 associations were further characterized. Given the key involvement of membrane-bound and soluble endoglin in different pathophysiological contexts, these findings open up a new research avenue to better understand the mechanism of action of endoglin. Future independent studies remain to be performed to assess the functional significance of the endoglin interactions with these novel partners.

Supplementary Material: The following is available online at www.mdpi.com/xxx/s1, Figure S1: Immunofluorescence staining of galectin-3, TRIM21, and endoglin in human endothelial cells, Table S1: Proteomic analysis of endoglin-associated proteins.

Author Contributions: Contribution: E.G.-V., J.C.-V., L.R.-L., M.Q., and C.B. designed the research, analyzed the data, and wrote the paper; E.G.-V., J.C.-V., L.R.-L., and M.J. R.-R. performed *in vitro* assays; N.L.-A. and A.K.P. provided helpful reagents and comments; C.B. and M.Q. supervised the research and provided funding support.

Funding: This work was supported by grants from Ministerio de Ciencia, Innovación y Universidades of Spain (SAF2013-43421-R to CB and SAF2017-84183-R to MQ), Centro de Investigación Biomédica en Red de Enfermedades Raras (CIBERER; ISCIII-CB06/07/0038 to CB and contract CNV-234-PRF-360 to LR-L) and Consejo Superior de Investigaciones Científicas (CSIC; 201920E022 to CB). JC-V was supported by a postdoctoral contract co-funded by Consejo Superior de Investigaciones Científicas, Ministerio de Ciencia, Innovación y Universidades and the European Social Fund (ESF). CIBERER and CIBERNED are initiatives of the Instituto de Salud Carlos III (ISCIII) of Spain supported by European Regional Development (FEDER) funds.

Acknowledgments: We thank the Proteomics and Genomics facility of Centro de Investigaciones Biológicas (CIB-CSIC), a member of ProteoRed-ISCI network, Juan Roman-Luque (Molecular Interactions facility, CIB-CSIC), Elena de Blas and Vivian de Los Rios, for technical support. The mass spectrometry proteomics data have been deposited to the ProteomeXchange Consortium via the PRIDE [101] partner repository (dataset identifier PXD015402) and to the UC3M repository (<https://doi.org/10.21950/ZHPOMI>) at University Carlos III (Madrid, Spain). We are indebted to Dr. Ibón Iloro (CICbioGUNE, Center for Cooperative Research in Biosciences, Bizkaia Science and Technology Park 48160 Derio, Spain) for data management assistance and submission to public repositories.

Conflicts of Interest: The authors declare no conflict of interest.

References

1. Lebrin, F.; Mummery, C.L. Endoglin-mediated vascular remodeling: Mechanisms underlying hereditary hemorrhagic telangiectasia. *Trends Cardiovasc Med.* **2008**, *18*, 25–32, doi:10.1016/j.tcm.2007.11.003.
2. López-Novoa, J.M.; Bernabeu, C. The physiological role of endoglin in the cardiovascular system. *Am. J. Physiol. Heart Circ. Physiol.* **2010**, doi:10.1152/ajpheart.01251.2009.
3. Núñez-Gómez, E.; Pericacho, M.; Ollauri-Ibáñez, C.; Bernabéu, C.; López-Novoa, J.M. The role of endoglin in post-ischemic revascularization. *Angiogenesis* **2017**, *20*, 1–24, doi:10.1007/s10456-016-9535-4.
4. Ruiz-Llorente, L.; Gallardo-Vara, E.; Rossi, E.; Smadja, D.M.; Botella, L.M.; Bernabeu, C. Endoglin and alk1 as therapeutic targets for hereditary hemorrhagic telangiectasia. *Expert Opin Ther Targets.* **2017**, *21*, 933–947, doi:10.1080/14728222.2017.1365839.
5. McAllister, K.A.; Grogg, K.M.; Johnson, D.W.; Gallione, C.J.; Baldwin, M.A.; Jackson, C.E.; Helmbold, E.A.; Markel, D.S.; McKinnon, W.C.; Murrell, J.; et al. Endoglin, a TGF-beta binding protein of endothelial cells, is the gene for hereditary haemorrhagic telangiectasia type 1. *Nat. Genet.* **1994**, *8*, 345–351, doi:10.1038/ng1294-345.
6. Shovlin, C.L. Hereditary haemorrhagic telangiectasia: Pathophysiology, diagnosis and treatment. *Blood Rev.* **2010**, *24*, 203–219, doi:10.1016/j.blre.2010.07.001.
7. Tual-Chalot, S.; Oh, S.P.; Arthur, H.M. Mouse models of hereditary hemorrhagic telangiectasia: Recent advances and future challenges. *Front. Genet.* **2015**, doi:10.3389/fgene.2015.00025.
8. Li, C.; Guo, B.; Bernabeu, C.; Kumar, S. Angiogenesis in breast cancer: The role of transforming growth factor beta and CD105. *Microsc Res. Tech.* **2001**, *52*, 437–449, doi:10.1002/1097-0029(20010215)52:4<437::AID-JEMT1029>3.0.CO;2-G.
9. Bernabeu, C.; Lopez-Novoa, J.M.; Quintanilla, M. The emerging role of TGF-beta superfamily coreceptors in cancer. *Biochim Biophys Acta* **2009**, *1792*, 954–973, doi:10.1016/j.bbdis.2009.07.003.
10. Fonsatti, E.; Nicolay, H.J.; Altomonte, M.; Cove, A.; Maio, M. Targeting cancer vasculature via endoglin/CD105: A novel antibody-based diagnostic and therapeutic strategy in solid tumours. *Cardiovasc Res.* **2010**, *86*, 12–19, doi:10.1093/cvr/cvp332.
11. Paauwe, M.; ten Dijke, P.; Hawinkels, L.J. Endoglin for tumor imaging and targeted cancer therapy. *Expert Opin Ther Targets.* **2013**, *17*, 421–435, doi:10.1517/14728222.2013.758716.
12. Rosen, L.S.; Gordon, M.S.; Robert, F.; Matei, D.E. Endoglin for targeted cancer treatment. *Curr Oncol Rep.* **2014**, doi:10.1007/s11912-013-0365-x.
13. Wong, V.C.; Chan, P.L.; Bernabeu, C.; Law, S.; Wang, L.D.; Li, J.L.; Tsao, S.W.; Srivastava, G.; Lung, M.L. Identification of an invasion and tumor-suppressing gene, Endoglin (ENG), silenced by both epigenetic inactivation and allelic loss in esophageal squamous cell carcinoma. *Int J. Cancer.* **2008**, *123*, 2816–2823, doi:10.1002/ijc.23882.
14. Henry, L.A.; Johnson, D.A.; Sarrió, D.; Lee, S.; Quinlan, P.R.; Crook, T.; Thompson, A.M.; Reis-Filho, J.S.; Isacke, C.M. Endoglin expression in breast tumor cells suppresses invasion and metastasis and correlates with improved clinical outcome. *Oncogene* **2011**, *30*, 1046–1058, doi:10.1038/onc.2010.488.
15. Lakshman, M.; Huang, X.; Ananthanarayanan, V.; Jovanovic, B.; Liu, Y.; Craft, C.S.; Romero, D.; Vary, C.P.; Bergan, R.C. Endoglin suppresses human prostate cancer metastasis. *Clin. Exp. Metastasis* **2011**, *28*, 39–53, doi:10.1007/s10585-010-9356-6.

16. Pérez-Gómez, E.; Villa-Morales, M.; Santos, J.; Fernández-Piqueras, J.; Gamallo, C.; Dotor, J.; Bernabéu, C.; Quintanilla, M. A role for endoglin as a suppressor of malignancy during mouse skin carcinogenesis. *Cancer Res.* **2007**, *67*, 10268–10277, doi:10.1158/0008-5472.CAN-07-1348.
17. Pardali, E.; van der Schaft, D.W.; Wiercinska, E.; Gorter, A.; Hogendoorn, P.C.; Griffioen, A.W.; ten Dijke, P. Critical role of endoglin in tumor cell plasticity of Ewing sarcoma and melanoma. *Oncogene* **2011**, *30*, 334–345, doi:10.1038/onc.2010.418.
18. Venkatesha, S.; Toporsian, M.; Lam, C.; Hanai, J.; Mammoto, T.; Kim, Y.M.; Bdolah, Y.; Lim, K.H.; Yuan, H.T.; Libermann, T.A.; et al. Soluble endoglin contributes to the pathogenesis of preeclampsia. *Nat. Med.* **2006**, *12*, 642–649, doi:10.1038/nm1429.
19. Gregory, A.L.; Xu, G.; Sotov, V.; Letarte, M. Review: The enigmatic role of endoglin in the placenta. *Placenta* **2014**, doi:10.1016/j.placenta.2013.10.020.
20. Aristorena M, Gallardo-Vara E, Vicen M, de Las Casas-Engel M, Ojeda-Fernandez L, Nieto C, Blanco FJ, Valbuena-Diez AC, Botella LM, Nachtigal P, Corbi AL, Colmenares M, Bernabeu, C. MMP-12, secreted by pro-inflammatory macrophages, targets endoglin in human macrophages and endothelial cells. *Int J. Mol. Sci.* **2019**, doi:10.3390/ijms20123107.
21. Oujó, B.; Pérez-Barriocanal, F.; Bernabeu, C.; López-Novoa, J.M. Membrane and soluble forms of endoglin in preeclampsia. *Curr Mol. Med.* **2013**, *13*, 1345–1357.
22. Hawinkels, L.J.; Kuiper, P.; Wiercinska, E.; Verspaget, H.W.; Liu, Z.; Pardali, E.; Sier, C.F.; ten Dijke, P. Matrix metalloproteinase-14 (MT1-MMP)-mediated endoglin shedding inhibits tumor angiogenesis. *Cancer Res.* **2010**, *70*, 4141–4150, doi:10.1158/0008-5472.CAN-09-4466.
23. Valbuena-Diez, A.C.; Blanco, F.J.; Oujó, B.; Langa, C.; González-Núñez, M.; Llano, E.; Pendas, A.M.; Díaz, M.; Castrillo, A.; López-Novoa, J.M.; et al. Oxysterol-induced soluble endoglin release and its involvement in hypertension. *Circulation* **2012**, *126*, 2612–2624, doi:10.1161/CIRCULATIONAHA.112.101261.
24. Rossi, E.; Sanz-Rodríguez, F.; Eleno, N.; Düwell, A.; Blanco, F.J.; Langa, C.; Botella, L.M.; Cabañas, C.; López-Novoa, J.M.; Bernabeu, C. Endothelial endoglin is involved in inflammation: Role in leukocyte adhesion and transmigration. *Blood* **2013**, *121*, 403–415, doi:10.1182/blood-2012-06-435347.
25. Rossi, E.; Smadja, D.M.; Boscolo, E.; Langa, C.; Arevalo, M.A.; Pericacho, M.; Gamella-Pozuelo, L.; Kauskot, A.; Botella, L.M.; Gaussem, P.; et al. Endoglin regulates mural cell adhesion in the circulatory system. *Cell Mol. Life Sci.* **2016**, *73*, 1715–1739, doi:10.1007/s00018-015-2099-4.
26. Vitverova, B.; Blazickova, K.; Najmanova, I.; Vicen, M.; Hyšpler, R.; Dolezelova, E.; Nemeckova, I.; Tebbens, J.D.; Bernabeu, C.; Pericacho, M.; et al. Soluble endoglin and hypercholesterolemia aggravate endothelial and vessel wall dysfunction in mouse aorta. *Atherosclerosis* **2018**, *271*, 15–25, doi:10.1016/j.atherosclerosis.2018.02.008.
27. Vicen, M.; Vitverova, B.; Havelek, R.; Blazickova, K.; Machacek, M.; Rathouska, J.; Najmanová, I.; Dolezelova, E.; Prasnicka, A.; Sternak, M.; et al. Regulation and role of endoglin in cholesterol-induced endothelial and vascular dysfunction in vivo and in vitro. *FASEB J.* **2019**, *33*, 6099–6114, doi:10.1096/fj.201802245R.
28. Gougos, A.; Letarte, M. Primary structure of endoglin, an RGD-containing glycoprotein of human endothelial cells. *J. Biol. Chem.* **1990**, *265*, 8361–8364.
29. Bernabeu, C.; Conley, B.A.; Vary, C.P. Novel biochemical pathways of endoglin in vascular cell physiology. *J. Cell Biochem.* **2007**, *102*, 1375–1388, doi:10.1002/jcb.21594.
30. Llorca, O.; Trujillo, A.; Blanco, F.J.; Bernabeu, C. Structural model of human endoglin, a transmembrane receptor responsible for hereditary hemorrhagic telangiectasia. *J. Mol. Biol.* **2007**, *365*, 694–705, doi:10.1016/j.jmb.2006.10.015.
31. Saito, T.; Bokhove, M.; Croci, R.; Zamora-Caballero, S.; Han, L.; Letarte, M.; de Sanctis, D.; Jovine, L. Structural Basis of the Human Endoglin-BMP9 Interaction: Insights into BMP Signaling and HHT1. *Cell Rep.* **2017**, *19*, 1917–1928, doi:10.1016/j.celrep.2017.05.011.
32. Bokhove, M.; Jovine, L. Structure of Zona Pellucida Module Proteins. *Curr Top. Dev. Biol.* **2018**, *130*, 413–442, doi:10.1016/bs.ctdb.2018.02.007.

33. Rossi, E.; Pericacho, M.; Bachelot-Loza, C.; Pidard, D.; Gaussem, P.; Poirault-Chassac, S.; Blanco, F.J.; Langa, C.; González-Manchón, C.; Lopez-Novoa, J.M.; et al. Human endoglin as a potential new partner involved in platelet-endothelium interactions. *Cell Mol. Life Sci.* **2018**, *75*, 1269–1284, doi:10.1007/s00018-017-2694-7.
34. Castonguay, R.; Werner, E.D.; Matthews, R.G.; Presman, E.; Mulivor, A.W.; Solban, N.; Sako, D.; Pearsall, R.S.; Underwood, K.W.; Seehra, J.; et al. Soluble endoglin specifically binds bone morphogenetic proteins 9 and 10 via its orphan domain, inhibits blood vessel formation, and suppresses tumor growth. *J. Biol Chem.* **2011**, *286*, 30034–30046, doi:10.1074/jbc.M111.260133.
35. Alt, A.; Miguel-Romero, L.; Donderis, J.; Aristorena, M.; Blanco, F.J.; Round, A.; Rubio, V.; Bernabeu, C.; Marina, A. Structural and functional insights into endoglin ligand recognition and binding. *PLoS ONE* **2012**, doi:10.1371/journal.pone.0029948.
36. Cheifetz, S.; Bellón, T.; Calés, C.; Vera, S.; Bernabeu, C.; Massagué, J.; Letarte, M. Endoglin is a component of the transforming growth factor-beta receptor system in human endothelial cells. *J. Biol Chem.* **1992**, *267*, 19027–19030.
37. Bellón T, Corbí A, Lastres P, Calés C, Cebrián M, Vera S, Cheifetz S, Massague J, Letarte, M., Bernabéu, C. Identification and expression of two forms of the human transforming growth factor-beta-binding protein endoglin with distinct cytoplasmic regions. *Eur J. Immunol.* **1993**, *23*, 2340–2345, doi:10.1002/eji.1830230943.
38. Lastres, P.; Letamendía, A.; Zhang, H.; Rius, C.; Almendro, N.; Raab, U.; López, L.A.; Langa, C.; Fabra, A.; Letarte, M.; et al. Endoglin modulates cellular responses to TGF-beta 1. *J. Cell Biol.* **1996**, *133*, 1109–1121, doi:10.1083/jcb.133.5.1109.
39. Mahmoud, M.; Upton, P.D.; Arthur, H.M. Angiogenesis regulation by TGFβ signalling: Clues from an inherited vascular disease. *Biochem Soc. Trans.* **2011**, *39*, 1659–1666, doi:10.1042/BST20110664.
40. Blanco, F.J.; Santibanez, J.F.; Guerrero-Esteo, M.; Langa, C.; Vary, C.P.; Bernabeu, C. Interaction and functional interplay between endoglin and ALK-1, two components of the endothelial transforming growth factor-beta receptor complex. *J. Cell Physiol.* **2005**, *204*, 574–584, doi:10.1002/jcp.20311.
41. Guerrero-Esteo, M.; Sanchez-Elsner, T.; Letamendia, A.; Bernabeu, C. Extracellular and cytoplasmic domains of endoglin interact with the transforming growth factor-beta receptors I and II. *J. Biol Chem.* **2002**, *277*, 29197–29209, doi:10.1074/jbc.M111991200.
42. Gallardo-Vara, E.; Blanco, F.J.; Roqué, M.; Friedman, S.L.; Suzuki, T.; Botella, L.M.; Bernabeu, C. Transcription factor KLF6 upregulates expression of metalloprotease MMP14 and subsequent release of soluble endoglin during vascular injury. *Angiogenesis* **2016**, *19*, 155–171, doi:10.1007/s10456-016-9495-8.
43. Ermini, L.; Ausman, J.; Melland-Smith, M.; Yeganeh, B.; Rolfo, A.; Litvack, M.L.; Todros, T.; Letarte, M.; Post, M.; Caniggia, I. A Single Sphingomyelin Species Promotes Exosomal Release of Endoglin into the Maternal Circulation in Preeclampsia. *Sci Rep.* **2017**, doi:10.1038/s41598-017-12491-4.
44. del Castillo, G.; Sánchez-Blanco, E.; Martín-Villar, E.; Valbuena-Diez, A.C.; Langa, C.; Pérez-Gómez, E.; Renart, J.; Bernabéu, C.; Quintanilla, M. Soluble endoglin antagonizes Met signaling in spindle carcinoma cells. *Carcinogenesis* **2015**, *36*, 212–22, doi:10.1093/carcin/bgu240.
45. Díez, P.; González-González, M.; Lourido, L.; Dégano, R.M.; Ibarrola, N.; Casado-Vela, J.; LaBaer, J.; Fuentes, M. NAPPA as a Real New Method for Protein Microarray Generation. *Microarrays* **2015**, *4*, 214–227, doi:10.3390/microarrays4020214.
46. Díez, P.; Dasilva, N.; González-González, M.; Matarráz, S.; Casado-Vela, J.; Orfao, A.; Fuentes, M. Data Analysis Strategies for Protein Microarrays. *Microarrays* **2012**, *1*, 64–83, doi:10.3390/microarrays1020064.
47. Das, A.; Dinh, P.X.; Pattnaik, A.K. Trim21 regulates Nmi-IFI35 complex-mediated inhibition of innate antiviral response. *Virology* **2015**, *485*, 383–392, doi:10.1016/j.virol.2015.08.013.

48. Calvier, L.; Miana, M.; Reboul, P.; Cachofeiro, V.; Martinez-Martinez, E.; de Boer, R.A.; Poirier, F.; Lacolley, P.; Zannad, F.; Rossignol, P.; et al. Galectin-3 mediates aldosterone-induced vascular fibrosis. *Arterioscler. Thromb. Vasc. Biol.* **2013**, *33*, 67–75, doi:10.1161/ATVBAHA.112.300569.
49. Casado-Vela, J.; Ruiz, E.J.; Nebreda, A.R.; Casal, J.I. A combination of neutral loss and targeted product ion scanning with two enzymatic digestions facilitates the comprehensive mapping of phosphorylation sites. *Proteomics* **2007**, *7*, 2522–2529, doi:10.1002/pmic.200700026.
50. Cristobo, I.; Larriba, M.J.; de los Ríos, V.; García, F.; Muñoz, A.; Casal, J.I. Proteomic analysis of 1 α , 25-Dihydroxyvitamin D3 action on human colon cancer cells reveals a link to splicing regulation. *J. Proteomics* **2011**, *75*, 384–397, doi:10.1016/j.jprot.2011.08.003.
51. Käll, L.; Canterbury, J.D.; Weston, J.; Noble, W.S.; MacCoss, M.J. Semi-supervised learning for peptide identification from shotgun proteomics datasets. *Nat. Methods* **2007**, *4*, 923–925, doi:10.1038/nmeth1113.
52. Sciacchitano, S.; Lavra, L.; Morgante, A.; Ulivieri, A.; Magi, F.; De Francesco, G.P.; Bellotti, C.; Salehi, L.B.; Ricci, A. Galectin-3: One Molecule for an Alphabet of Diseases, from A to Z. *Int J. Mol. Sci.* **2018**, doi:10.3390/ijms19020379.
53. Abdiche, Y.; Malashock, D.; Pinkerton, A.; Pons, J. Determining kinetics and affinities of protein interactions using a parallel real-time label-free biosensor, the Octet. *Anal. Biochem.* **2008**, *377*, 209–217, doi:10.1016/j.ab.2008.03.035.
54. Do, T.; Ho, F.; Heidecker, B.; Witte, K.; Chang, L.; Lerner, L. A rapid method for determining dynamic binding capacity of resins for the purification of proteins. *Protein Expr Purif.* **2008**, *60*, 147–150, doi:10.1016/j.pep.2008.04.009.
55. Lee, H.J. The Role of Tripartite Motif Family Proteins in TGF- β Signaling Pathway and Cancer. *J. Cancer Prev.* **2018**, *23*, 162–169, doi:10.15430/JCP.2018.23.4.162.
56. Fletcher, A.J.; Mallery, D.L.; Watkinson, R.E.; Dickson, C.F.; James, L.C. Sequential ubiquitination and deubiquitination enzymes synchronize the dual sensor and effector functions of TRIM21. *Proc. Natl Acad Sci USA* **2015**, *112*, 10014–10019, doi:10.1073/pnas.1507534112.
57. Anandapadamanaban, M.; Kyriakidis, N.C.; Csizmók, V.; Wallenhammar, A.; Espinosa, A.C.; Ahlner, A.; Round, A.R.; Trehwella, J.; Moche, M.; Wahren-Herlenius, M.; et al. E3 ubiquitin-protein ligase TRIM21-mediated lysine capture by UBE2E1 reveals substrate-targeting mode of a ubiquitin-conjugating E2. *J. Biol Chem.* **2019**, *294*, 11404–11419, doi:10.1074/jbc.RA119.008485.
58. Jin, Y.; Zhang, Y.; Li, B.; Zhang, J.; Dong, Z.; Hu, X.; Wan, Y. TRIM21 mediates ubiquitination of Snail and modulates epithelial to mesenchymal transition in breast cancer cells. *Int J. Biol Macromol.* **2019**, *124*, 846–853, doi:10.1016/j.ijbiomac.2018.11.269.
59. Nguyen, J.Q.; Irby, R.B. TRIM21 is a novel regulator of Par-4 in colon and pancreatic cancer cells. *Cancer Biol. Ther.* **2017**, *18*, 16–25, doi:10.1080/15384047.2016.1252880.
60. Zhou, W.; Zhang, Y.; Zhong, C.; Hu, J.; Hu, H.; Zhou, D.; Cao, M. Decreased expression of TRIM21 indicates unfavorable outcome and promotes cell growth in breast cancer. *Cancer Manag Res.* **2018**, *10*, 3687–3696, doi:10.2147/CMAR.S175470.
61. Ahn, Y.; Hwang, J.H.; Zheng, Z.; Bang, D.; Kim, D.Y. Enhancement of Th1/Th17 inflammation by TRIM21 in Behçet's disease. *Sci Rep.* **2017**, doi:10.1038/s41598-017-03251-5.
62. Vinter, H.; Langkilde, A.; Ottosson, V.; Espinosa, A.; Wahren-Herlenius, M.; Raaby, L.; Johansen, C.; Iversen, L. TRIM21 is important in the early phase of inflammation in the imiquimod-induced psoriasis-like skin inflammation mouse model. *Exp. Dermatol.* **2017**, *26*, 713–720, doi:10.1111/exd.13269.
63. Gómez-Martín, D.; Galindo-Feria, A.S.; Barrera-Vargas, A.; Merayo-Chalico, J.; Juárez-Vega, G.; Torres-Ruiz, J.; Alcocer-Varela, J. Ro52/TRIM21-deficient expression and function in different subsets of peripheral blood mononuclear cells is associated with a proinflammatory cytokine response in patients with idiopathic inflammatory myopathies. *Clin. Exp. Immunol.* **2017**, *188*, 154–162, doi:10.1111/cei.12914.
64. Zhou, G.; Wu, W.; Yu, L.; Yu, T.; Yang, W.; Wang, P.; Zhang, X.; Cong, Y.; Liu, Z. Tripartite motif-containing (TRIM) 21 negatively regulates intestinal mucosal inflammation through inhibiting

- TH1/TH17 cell differentiation in patients with inflammatory bowel diseases. *J. Allergy Clin. Immunol.* **2018**, *142*, 1218–1228, doi:10.1016/j.jaci.2017.09.038.
65. Foss, S.; Watkinson, R.; Sandlie, I.; James, L.C.; Andersen, J.T. TRIM21: A cytosolic Fc receptor with broad antibody isotype specificity. *Immunol Rev.* **2015**, *268*, 328–339, doi:10.1111/imr.12363.
66. Rhodes, D.A.; Isenberg, D.A. TRIM21 and the Function of Antibodies inside Cells. *Trends Immunol.* **2017**, *38*, 916–926, doi:10.1016/j.it.2017.07.005.
67. Oke, V.; Wahren-Herlenius, M. The immunobiology of Ro52 (TRIM21) in autoimmunity: A critical review. *J. Autoimmun.* **2012**, *39*, 77–82, doi:10.1016/j.jaut.2012.01.014.
68. Sanz-Rodriguez, F.; Guerrero-Esteo, M.; Botella, L.M.; Banville, D.; Vary, C.P.; Bernabéu, C. Endoglin regulates cytoskeletal organization through binding to ZRP-1, a member of the Lim family of proteins. *J. Biol Chem.* **2004**, *279*, 32858–32868, doi:10.1074/jbc.M400843200.
69. Conley, B.A.; Koleva, R.; Smith, J.D.; Kacer, D.; Zhang, D.; Bernabéu, C.; Vary, C.P. Endoglin controls cell migration and composition of focal adhesions: Function of the cytosolic domain. *J. Biol Chem.* **2004**, *279*, 27440–27449, doi:10.1074/jbc.M312561200.
70. Meng, Q.; Lux, A.; Holloschi, A.; Li, J.; Hughes, J.M.; Foerg, T.; McCarthy, J.E.; Heagerty, A.M.; Kioschis, P.; Hafner, M.; et al. Identification of Tctex2beta, a novel dynein light chain family member that interacts with different transforming growth factor-beta receptors. *J. Biol Chem.* **2006**, *281*, 37069–37080, doi:10.1074/jbc.M608614200.
71. Xu, G.; Barrios-Rodiles, M.; Jerkic, M.; Turinsky, A.L.; Nadon, R.; Vera, S.; Voulgaraki, D.; Wrana, J.L.; Toporsian, M.; Letarte, M. Novel protein interactions with endoglin and activin receptor-like kinase 1: Potential role in vascular networks. *Mol. Cell Proteomics* **2014**, *13*, 489–502, doi:10.1074/mcp.M113.033464.
72. Fernandez-L., A.; Garrido-Martin, E.M.; Sanz-Rodriguez, F.; Pericacho, M.; Rodriguez-Barbero, A.; Eleno, N.; Lopez-Novoa, J.M.; Düwell, A.; Vega, M.A.; Bernabeu, C.; et al. Gene expression fingerprinting for human hereditary hemorrhagic telangiectasia. *Hum. Mol. Genet.* **2007**, *16*, 1515–1533, doi:10.1093/hmg/ddm069.
73. Thomas, B.; Eyries, M.; Montagne, K.; Martin, S.; Agrapart, M.; Simerman-François, R.; Letarte, M.; Soubrier, F. Altered endothelial gene expression associated with hereditary haemorrhagic telangiectasia. *Eur J. Clin. Invest.* **2007**, *37*, 580–588, doi:10.1111/j.1365-2362.2007.01824.x.
74. Blanco, F.J.; Ojeda-Fernandez, L.; Aristorena, M.; Gallardo-Vara, E.; Benguria, A.; Dopazo, A.; Langa, C.; Botella, L.M.; Bernabeu, C. Genome-wide transcriptional and functional analysis of endoglin isoforms in the human promonocytic cell line U937. *J. Cell Physiol.* **2015**, *230*, 947–958, doi:10.1002/jcp.24827.
75. Fernandez-García, C.E.; Tarin, C.; Roldan-Montero, R.; Martinez-Lopez, D.; Torres-Fonseca, M.; Lindhot, J.S.; Vega de Ceniga, M.; Egido, J.; Lopez-Andres, N.; Blanco-Colio, L.M.; et al. Increased galectin-3 levels are associated with abdominal aortic aneurysm progression and inhibition of galectin-3 decreases elastase-induced AAA development. *Clin. Sci* **2017**, *131*, 2707–2719, doi:10.1042/CS20171142.
76. Arrieta, V.; Martinez-Martinez, E.; Ibarrola, J.; Alvarez, V.; Sádaba, R.; Garcia-Peña, A.; Fernández-Celis, A.; Cachofeiro, V.; Rossignol, P.; López-Andrés, N. A role for galectin-3 in the development of early molecular alterations in short-term aortic stenosis. *Clin. Sci* **2017**, *131*, 935–949, doi:10.1042/CS20170145.
77. Dos Santos, S.N.; Sheldon, H.; Pereira, J.X.; Paluch, C.; Bridges, E.M.; El-Cheikh, M.C.; Harris, A.L.; Bernardes, E.S. Galectin-3 acts as an angiogenic switch to induce tumor angiogenesis via Jagged-1/Notch activation. *Oncotarget* **2017**, *8*, 49484–49501, doi:10.18632/oncotarget.17718.
78. Barman, S.A.; Chen, F.; Li, X.; Haigh, S.; Stepp, D.W.; Kondrikov, D.; Mahboubi, K.; Bordan, Z.; Traber, P.; Su, Y.; et al. Galectin-3 Promotes Vascular Remodeling and Contributes to Pulmonary Hypertension. *Am. J. Respir Crit Care Med.* **2018**, *197*, 1488–1492, doi:10.1164/rccm.201711-2308LE.
79. Chen, X.; Lin, J.; Hu, T.; Ren, Z.; Li, L.; Hameed, I.; Zhang, X.; Men, C.; Guo, Y.; Xu, D.; et al. Galectin-3 exacerbates ox-LDL-mediated endothelial injury by inducing inflammation via integrin β 1-RhoA-JNK signaling activation. *J. Cell Physiol.* **2019**, *234*, 10990–11000, doi:10.1002/jcp.27910.

80. Martínez-Martínez, E.; Brugnolaro, C.; Ibarrola, J.; Ravassa, S.; Buonafine, M.; López, B.; Fernández-Celis, A.; Querejeta, R.; Santamaria, E.; Fernández-Irigoyen, J.; et al. CT-1 (Cardiotrophin-1)-Gal-3 (Galectin-3) Axis in Cardiac Fibrosis and Inflammation. *Hypertension* **2019**, *73*, 602–611, doi:10.1161/HYPERTENSIONAHA.118.11874.
81. Pérez, L.; Vallejos, A.; Echeverria, C.; Varela, D.; Cabello-Verrugio, C.; Simon, F. OxHDL controls LOX-1 expression and plasma membrane localization through a mechanism dependent on NOX/ROS/NF- κ B pathway on endothelial cells. *Lab. Invest.* **2019**, *99*, 421–437, doi:10.1038/s41374-018-0151-3.
82. Jeschke, U.; Mayr, D.; Schiessl, B.; Mylonas, I.; Schulze, S.; Kuhn, C.; Friese, K.; Walzel, H. Expression of galectin-1, -3 (gal-1, gal-3) and the Thomsen-Friedenreich (TF) antigen in normal, IUGR, preeclamptic and HELLP placentas. *Placenta* **2007**, *28*, 1165–1173, doi:10.1016/j.placenta.2007.06.006.
83. Nangia-Makker, P.; Honjo, Y.; Sarvis, R.; Akahani, S.; Hogan, V.; Pienta, K.J.; Raz, A. Galectin-3 induces endothelial cell morphogenesis and angiogenesis. *Am. J. Pathol.* **2000**, *156*, 899–909, doi:10.1016/S0002-9440(10)64959-0.
84. Markowska, A.I.; Liu, F.T.; Panjwani, N. Galectin-3 is an important mediator of VEGF- and bFGF-mediated angiogenic response. *J. Exp. Med.* **2010**, *207*, 1981–1993, doi:10.1084/jem.20090121.
85. Griffioen, A.W.; Thijssen, V.L. Galectins in tumor angiogenesis. *Ann. Transl Med.* **2014**, *2*, 90, doi:10.3978/j.issn.2305-5839.2014.09.01.
86. Gallardo-Vara, E.; Tual-Chalot, S.; Botella, L.M.; Arthur, H.M.; Bernabeu, C. Soluble endoglin regulates expression of angiogenesis-related proteins and induction of arteriovenous malformations in a mouse model of hereditary hemorrhagic telangiectasia. *Dis Model. Mech.* **2018**, doi:10.1242/dmm.034397.
87. Colomb, F.; Wang, W.; Simpson, D.; Zafar, M.; Beynon, R.; Rhodes, J.M.; Yu, L.G. Galectin-3 interacts with the cell-surface glycoprotein CD146 (MCAM, MUC18) and induces secretion of metastasis-promoting cytokines from vascular endothelial cells. *J. Biol Chem.* **2017**, *292*, 8381–8389, doi:10.1074/jbc.M117.783431.
88. Ruvolo, P.P. Galectin 3 as a guardian of the tumor microenvironment. *Biochim. Biophys. Acta* **2016**, *1863*, 427–437, doi:10.1016/j.bbamcr.2015.08.008.
89. Pérez-Gómez, E.; Del Castillo, G.; Santibanez, J.F.; López-Novoa, J.M.; Bernabéu, C.; Quintanilla, M. The role of the TGF- β coreceptor endoglin in cancer. *ScientificWorldJournal* **2010**, *10*, 2367–2384, doi:10.1100/tsw.2010.230.
90. Clift, D.; So, C.; McEwan, W.A.; James, L.C.; Schuh, M. Acute and rapid degradation of endogenous proteins by Trim-Away. *Nat. Protoc.* **2018**, *13*, 2149–2175, doi:10.1038/s41596-018-0028-3.
91. Iyengar, P.V. Regulation of Ubiquitin Enzymes in the TGF- β Pathway. *Int J. Mol. Sci.* **2017**, doi:10.3390/ijms18040877.
92. Paquet, M.E.; Pece-Barbara, N.; Vera, S.; Cymerman, U.; Karabegovic, A.; Shovlin, C.; Letarte, M. Analysis of several endoglin mutants reveals no endogenous mature or secreted protein capable of interfering with normal endoglin function. *Hum. Mol. Genet.* **2001**, *10*, 1347–1357, doi:10.1093/hmg/10.13.1347.
93. Wang, H.; Zhou, Y.; Oyang, L.; Han, Y.; Xia, L.; Lin, J.; Tang, Y.; Su, M.; Tan, S.; Tian, Y.; et al. LPLUNC1 stabilises PHB1 by counteracting TRIM21-mediated ubiquitination to inhibit NF- κ B activity in nasopharyngeal carcinoma. *Oncogene* **2019**, *38*, 5062–5075, doi:10.1038/s41388-019-0778-6.
94. Hu, J.; Guan, W.; Yan, L.; Ye, Z.; Wu, L.; Xu, H. Cancer Stem Cell Marker Endoglin (CD105) Induces Epithelial Mesenchymal Transition (EMT) but Not Metastasis in Clear Cell Renal Cell Carcinoma. *Stem Cells Int.* **2019**, doi:10.1155/2019/9060152.
95. Zhang, L.; Li, Y.M.; Zeng, X.X.; Wang, X.Y.; Chen, S.K.; Gui, L.X.; Lin, M.J. Galectin-3-Mediated Transdifferentiation of Pulmonary Artery Endothelial Cells Contributes to Hypoxic Pulmonary Vascular Remodeling. *Cell Physiol. Biochem.* **2018**, *51*, 763–777, doi:10.1159/000495331.

96. Li, L.; Wei, J.; Mallampalli, R.K.; Zhao, Y.; Zhao, J. TRIM21 mitigates human lung microvascular endothelial cells inflammatory responses to lipopolysaccharide. *Am. J. Respir Cell Mol. Biol.* **2019**, June 11, doi:10.1165/rcmb.2018-0366OC. [Epub ahead of print].
97. Natarajan, V. Mind the Gap between the Endothelium and E3 Ubiquitin Ligase: TRIM21 is a Viable Therapeutic Target in Sepsis-Induced Endothelial Dysfunction. *Am. J. Respir Cell Mol. Biol.* **2019** Jun 14, doi:10.1165/rcmb.2019-0161ED. [Epub ahead of print].
98. Torsney, E.; Charlton, R.; Parums, D.; Collis, M.; Arthur, H.M. Inducible expression of human endoglin during inflammation and wound healing in vivo. *Inflamm Res.* **2002**, *51*, 464–470.
99. van Laake, L.W., van den Driesche, S.; Post, S.; Feijen, A.; Jansen, M.A.; Driessens, M.H.; Mager, J.J.; Snijder, R.J.; Westermann, C.J.; Doevendans, P.A.; et al. Endoglin has a crucial role in blood cell-mediated vascular repair. *Circulation* **2006**, *114*, 2288–2297, doi:10.1161/CIRCULATIONAHA.106.639161.
100. Faiotto, V.B.; Franci, D.; Enz Hubert, R.M.; de Souza, G.R.; Fiusa, M.M.L.; Hounkpe, B.W.; Santos, T.M.; Carvalho-Filho, M.A.; De Paula, E.V. Circulating levels of the angiogenesis mediators endoglin, HB-EGF, BMP-9 and FGF-2 in patients with severe sepsis and septic shock. *J. Crit. Care.* **2017**, *42*, 162–167, doi:10.1016/j.jcrc.2017.07.034.
101. Perez-Riverol, Y.; Csordas, A.; Bai, J.; Bernal-Llinares, M.; Hewapathirana, S.; Kundu, D.J.; Inuganti, A.; Griss, J.; Mayer, G.; Eisenacher, M.; Pérez, E.; Uszkoreit, J.; Pfeuffer, J.; Sachsenberg, T.; Yilmaz, S.; Tiwary, S.; Cox, J.; Audain, E.; Walzer, M.; Jarnuczak, A.F.; Ternent, T.; Brazma, A.; Vizcaíno, J.A. The PRIDE database and related tools and resources in 2019: improving support for quantification data. *Nucleic Acids Res.* **2019**, *47*, D442–D450. doi: 10.1093/nar/gky1106.



© 2019 by the authors. Licensee MDPI, Basel, Switzerland. This article is an open access article distributed under the terms and conditions of the Creative Commons Attribution (CC BY) license (<http://creativecommons.org/licenses/by/4.0/>).