

Utah State University

DigitalCommons@USU

Old Ephraim Exhibit

Utah State University Special Collections &
Archives

8-2019

Grave Wayfinder: Visit Old Ephraim's Grave

Alyson Griggs

Utah State University, alyson.fairbourn@aggiemail.usu.edu

Clint Pumphrey

Utah State University, clint.pumphrey@usu.edu

Shay Larsen

Utah State University, shay.larsen@usu.edu

Follow this and additional works at: <https://digitalcommons.usu.edu/oldephraim>

Recommended Citation

Griggs, Alyson; Pumphrey, Clint; and Larsen, Shay, "Grave Wayfinder: Visit Old Ephraim's Grave" (2019). *Old Ephraim Exhibit*. 4.

<https://digitalcommons.usu.edu/oldephraim/4>

This Book is brought to you for free and open access by the Utah State University Special Collections & Archives at DigitalCommons@USU. It has been accepted for inclusion in Old Ephraim Exhibit by an authorized administrator of DigitalCommons@USU. For more information, please contact digitalcommons@usu.edu.



HIKING DIRECTIONS TO OLD EPHRAIM'S GRAVE

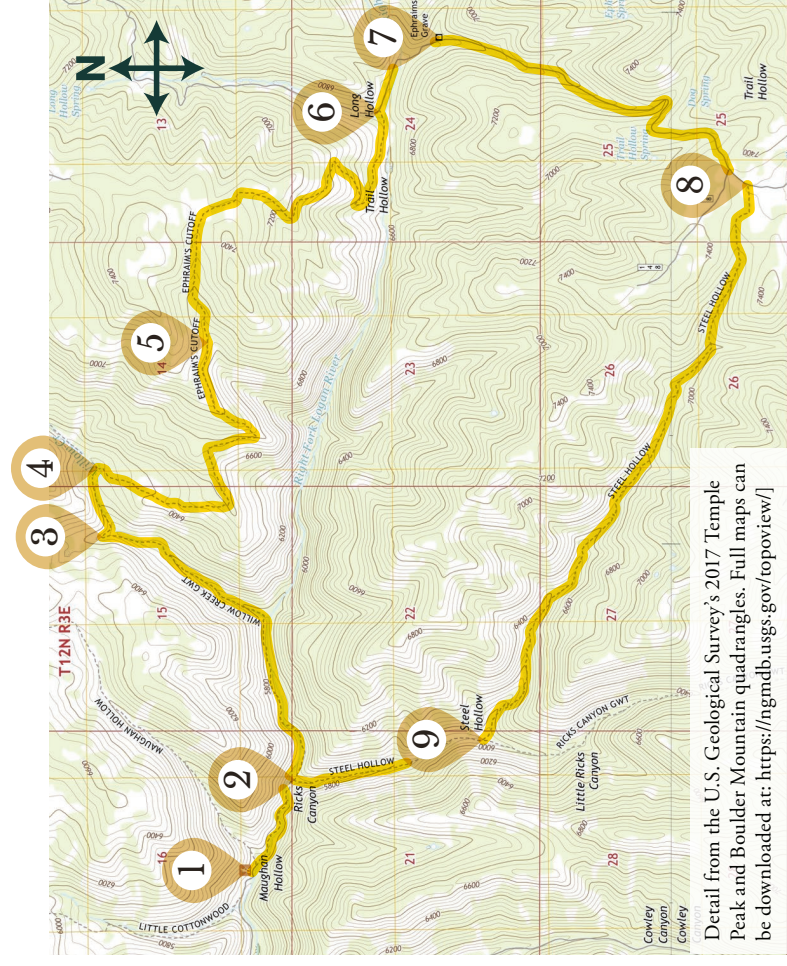
- 1 The trail starts by the creek at the end of the turnaround.
- 2 At 0.5 miles, keep left on the Willow Creek Trail.
- 3 At 2 miles, a rocky cow path continues up the hill; make a sharp right to stay on the trail.
- 4 At 2.35 miles, turn right across a creek bed onto Ephraim's Cutoff Trail.
- 5 At 4 miles, check out the deep sinkhole just off the left of the trail.
- 6 At 5.55 miles, the trail intersects Long Hollow Road (FR 056). Turn right and walk south down the road.
- 7 At 6 miles, arrive at Old Ephraim's grave. After visiting the site, continue south on Long Hollow Road (FR 056).
- 8 At 7.65 miles, turn right off the road and onto the Steel Hollow Trail.
- 9 At 10.4 miles, turn right onto the Ricks Canyon/Steel Hollow Trail.
- 2 (Step 10) At 11.25 miles, turn left toward the Right Hand Fork trailhead.
- 1 (Step 11) At 11.75 miles, return to the trailhead.

VISIT OLD EPHRAIM'S GRAVE

HIKING DIRECTIONS TO OLD EPHRAIM'S GRAVE

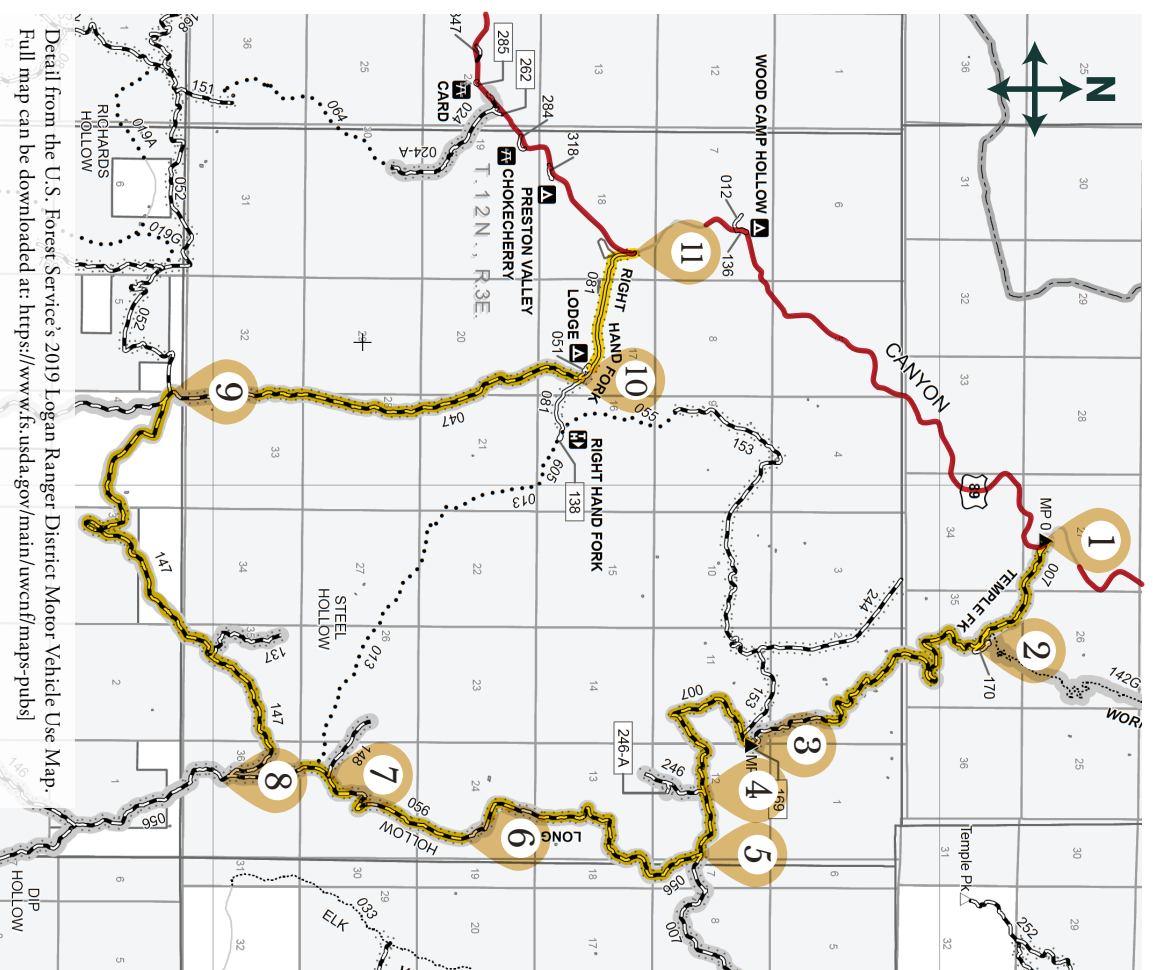
This loop hike takes you to Old Ephraim's grave via the Willow Creek Trail, Ephraim's Cutoff Trail, Long Hollow Road (FR 056), Steel Hollow Trail, and Rick's Canyon Trail. The total distance is 11.75 miles from the Right Hand Fork trailhead, and the hike takes 6 to 7 hours plus breaks. It can be hiked from late spring to early fall. There is no cell service along the route.

To get to the trailhead, head east on U.S. Highway 89 into Logan Canyon. From the mouth of the canyon, drive 8.7 miles and turn right onto Right Hand Fork Road (FR081). After 1.3 miles, stay left at the fork, following the sign to the Right Hand Fork trailhead. Continue 0.7 miles and park at the turnaround where the road dead ends.



DRIVING DIRECTIONS TO OLD EPHRAIM'S GRAVE

- 1 Head east on U.S. Highway 89 into Logan Canyon. From the mouth of the canyon, drive 14.7 miles and turn right onto Temple Fork Road (FR 007), just after milepost 476. Reset your odometer to 0.0 miles at the parking area.
- 2 At 0.9 miles, keep right on FR 007, following the sign to Ephraim's grave.
- 3 At 4.7 miles, you pass the Little Cottonwood Spring turnout to the right (FR 153). Continue straight on FR 007, following the sign to Mud Flat and Temple Flat.
- 4 At 6.3 miles, you pass the Hunsaker Springs turnout to the right (FR 246). Continue straight on FR 007.
- 5 At 6.9 miles, turn right onto Long Hollow Road (FR 056), following the sign south to Old Ephraim's grave.
- 6 At 9.7 miles, arrive at the parking area for Old Ephraim's grave. After visiting the site, continue south on Long Hollow Road (FR 056).
- 7 At 11.3 miles, you pass the Trail Hollow Spring turnout to the right (FR 148). Continue straight on FR 056.
- 8 At 12.2 miles, turn right onto FR 147, following the sign to Logan Canyon U.S. 89.
- 9 At 17.2 miles, FR 147 ends and becomes FR052. Stay right, following the sign to Right Hand Fork Canyon. At 17.3 miles, turn right onto FR 047.
- 10 At 21.1 miles, FR 047 ends and becomes FR081, a paved road. Continue straight, following the sign to Logan Canyon U.S. 89.
- 11 At 22.4 miles, arrive at U.S. Highway 89. Turn left to head west back to Logan.



DRIVING DIRECTIONS TO OLD EPHRAIM'S GRAVE

This loop drive takes you to Old Ephraim's grave via Temple Fork and Right Hand Fork canyons. The total distance is 31.3 miles roundtrip from the mouth of Logan Canyon, and the drive takes approximately 3 hours. It is typically open for travel from June 15 to November 15.

The route is very rocky, rutted, and steep, suitable for high-clearance, four-wheel-drive vehicles only. Do not attempt after rain or when the ground is saturated with snowmelt as roads can become impassable due to mud. There is no cell service along the route.

Before you go, visit the Logan Ranger District office at 1500 East Highway 89 or call them at (435) 755-3620 to inquire about current road conditions.