

■ Peptidomimetics

Surface Design for Immobilization of an Antimicrobial Peptide Mimic for Efficient Anti-Biofouling

Abshar Hasan,^[a, f] Kyueui Lee,^[b] Kunal Tewari,^[f] Lalit M. Pandey,^[a] Phillip B. Messersmith,^[c, d] Karen Faulds,^[f] Michelle Maclean,^[e] and King Hang Aaron Lau^{*[f]}

Abstract: Microbial surface attachment negatively impacts a wide range of devices from water purification membranes to biomedical implants. Mimics of antimicrobial peptides (AMPs) constituted from poly(*N*-substituted glycine) „peptoids“ are of great interest as they resist proteolysis and can inhibit a wide spectrum of microbes. We investigate how terminal modification of a peptoid AMP-mimic and its surface immobilization affect antimicrobial activity. We also demonstrate a convenient surface modification strategy for enabling alkyne–azide „click“ coupling on amino-functionalized surfaces. Our results verified that the N- and C-terminal peptoid structures are not required for antimicrobial activity. Moreover, our peptoid immobilization density and choice of PEG tether resulted in a „volumetric“ spatial separation between AMPs that, compared to past studies, enabled the highest AMP surface activity relative to bacterial attachment. Our analysis suggests the importance of spatial flexibility for membrane activity and that AMP separation may be a controlling parameter for optimizing surface anti-biofouling.

Bacterial adhesion and colonization on implantable biomedical devices and the consequent infection contribute to 40–70% of hospital-acquired infections (HAI).^[1] Water purification systems, food packaging, and maritime operations can also be compromised by microbial contamination.^[2] Despite substantial research, prevention of bacterial adhesion and growth on surfa-

ces is still challenging.^[3] Surface properties such as roughness and topology, chemistry and wettability, as well as surface molecular arrangements, are among the many factors that influence biofouling.^[4]

Proposed strategies for overcoming bacterial surface fouling include „antifouling“ coatings that inhibit non-specific protein adsorption and bacterial attachment, such as by surface grafting poly(ethylene glycol) (PEG) as polymer brushes.^[5] Immobilization of existing antibiotics and antibiotic-releasing coatings are other strategies.^[6] However, many existing antimicrobial agents suffer from a narrow spectrum of activity and a rising resistance against their activities.^[6b,7] Antimicrobial peptides (AMPs) are being investigated to overcome these issues,^[6] but they are degraded by proteases secreted by both human hosts and bacteria.^[8]

Poly(*N*-substituted glycine) „peptoids“ represent a promising class of peptidomimics being developed to address the drawbacks of AMPs. They possess a non-natural polyglycine backbone with sidechains attached to backbone amide nitrogen atoms that offers protease resistance and enhanced lipid membrane permeability.^[9] Secondary structures are induced in specific sequences with specific sidechains.^[9b,10]

A number of groups have demonstrated peptoid AMP mimics that exhibit high activity.^[6b,8a,11] One such peptoid has also been synthesized as part of a surface grafted peptoid brush but a high level of overall bacterial attachment was observed.^[12] Natural AMPs such as hLf1-11, LL-37, and melamine have also been immobilized with varying results.^[6,8c,13] These studies apply bioconjugation techniques such as maleimide-

[a] Dr. A. Hasan, Prof. L. M. Pandey
Bio-Interface & Environmental Engineering Lab
Department of Biosciences and Bioengineering
Indian Institute of Technology Guwahati
Assam, 781039 (India)


[b] Dr. K. Lee
Department of Bioengineering
University of California, Berkeley
Berkeley (USA)


[c] Prof. P. B. Messersmith
1. Department of Bioengineering
2. Department of Materials Science and Engineering
University of California, Berkeley
Berkeley (USA)

[d] Prof. P. B. Messersmith
Materials Sciences Division
Lawrence Berkeley National Laboratory
Berkeley (USA)

[e] Dr. M. Maclean
1. Department of Electronic & Electrical Engineering
2. Department of Biomedical Engineering
University of Strathclyde
295 Cathedral Street
Glasgow G1 1XL (UK)

[f] Dr. A. Hasan, Dr. K. Tewari, Prof. K. Faulds, Dr. K. H. A. Lau
Department of Pure & Applied Chemistry
University of Strathclyde
295 Cathedral Street
Glasgow G1 1XL (UK)
E-mail: aaron.lau@strath.ac.uk

 Supporting information and the ORCID identification number(s) for the author(s) of this article can be found under:
<https://doi.org/10.1002/chem.202000746>.

 © 2020 The Authors. Published by Wiley-VCH Verlag GmbH & Co. KGaA. This is an open access article under the terms of the Creative Commons Attribution License, which permits use, distribution and reproduction in any medium, provided the original work is properly cited.

thiol, amide, and alkyne–azide „click” coupling to enable covalent surface immobilization. Alkyne–azide coupling is especially suitable since it is orthogonal to reactive groups commonly found on AMPs, but the approach is often limited by the availability of specialized chemical linkers.

In the present work, we employ a 12-mer (Nlys-Nspe-Nspe)₄ antimicrobial peptoid with an amphiphilic helical structure, first reported by Barron et al.,^[11] as a model AMP mimic for investigating the influence of immobilization design on surface antimicrobial activity. We first tested the effects of modifying the peptoid's N- and C-termini with diethylene glycol segments on the minimum inhibitory concentrations (MICs) in solution. We then demonstrated the conversion of surface immobilized amines into azides for copper(I)-catalyzed alkyne–azide cycloaddition (CuAAC) surface coupling of the peptoid, with or without a 2 kDa polyethylene glycol (PEG) tether. We characterized the surface modification steps by water contact angle (WCA) analysis and X-ray photoelectron spectroscopy (XPS), and finally assayed the surfaces for protein adsorption and live/dead bacterial attachment. We hypothesized that sufficient spatial separation between AMPs and hence flexibility in molecular arrangement, such as enabled by a PEG tether, is required to both resist bacterial attachment and retain antimicrobial activity on a surface.

The (Nlys-Nspe-Nspe)₄ parent sequence is composed of a repeating „kss” motif in which k and s are, respectively, the Lys-analogue *N*-(4-aminobutyl)glycine (Nlys) and the α -chiral (*S*)-*N*-(1-phenylethyl)glycine (Nspe) (Figure 1 A). The sequence represents an archetypical ABB trimer motif in which A is cationic and B is hydrophobic (often Nspe to induce helicity). Peptoid synthesis was carried out using well-established „sub-monomer” solid phase synthesis (SSPS),^[9b] and all sequence modifications were performed on-resin using commercially available building blocks (see ESI). HPLC and LC-MS characterization of purified sequences are shown in Figures S1 and S2.

We first verified whether the C-terminal amide or the N-terminal amine of (kss)₄ might be important to its bactericidal effect. Cultured bacteria (5×10^7 CFU mL⁻¹) were incubated in growth broth containing peptoids modified either at the C- or N-terminus with a diethylene glycol (EG₂) linker to give, respec-

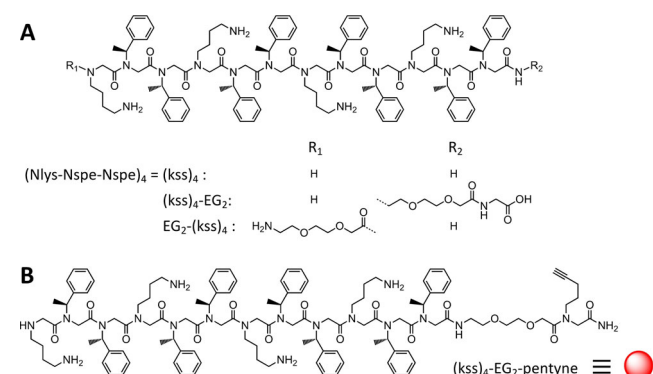


Figure 1. A) Chemical structures of the (kss)₄ antimicrobial sequence as well as its C- and N-modifications. B) Chemical structure of the modified sequence for CuAAC „click” coupling. The red ball representation is used in Figure 2A.

tively (kss)₄-EG₂ and EG₂-(kss)₄ (Figure 1 A). The EG₂ linker was also used later for spacing (kss)₄ from the surface-coupling group (see below). We found similar MICs with or without terminal modifications for the Gram negative and Gram positive strains tested (i.e. 16–20 μ M against *Pseudomonas aeruginosa* (PA01), 5–9 μ M against *Escherichia coli* (ATCC 25922), 1–6 μ M against *Staphylococcus aureus* (NCTC 4135); see Figure S3 for full data). A previous report modifying the N-terminus of (kss)₄ with a small-molecule metal chelator also showed little change in MIC against *E. coli*.^[14] A different report modifying the C-terminus of a peptoid similar to (kss)₄ with a non-functional 20-residue peptoid lowered activity (i.e. increased MIC) by 2–10 times depending on the strain.^[12] The overall data suggest that the peptoid N- and C-terminal structures are not essential to activity, but the steric bulk of the modification may be important.

For surface immobilization, we further modified the C-terminal with a residue possessing a pentyne sidechain using regular peptoid SSPS to generate (kss)₄-EG₂-pentyne (Figure 1 B). In parallel, following established protocols (see ESI), we prepared glass slides silanized either with (3-glycidyloxypropyl)trimethoxysilane (GOPTS) further functionalized by a diamino-PEG_{2k}^[15] or simply with (3-aminopropyl)trimethoxysilane (APTMS) (Figure 2A).^[16] The terminal amines on both surfaces were then converted to azides by one-step overnight incubation with imidazole-1-sulfonyl azide (see ESI).^[17] This enabled CuAAC coupling^[18] of (kss)₄-EG₂-pentyne to give peptoid functionalized surfaces with and without a PEG_{2k} tether, that is,

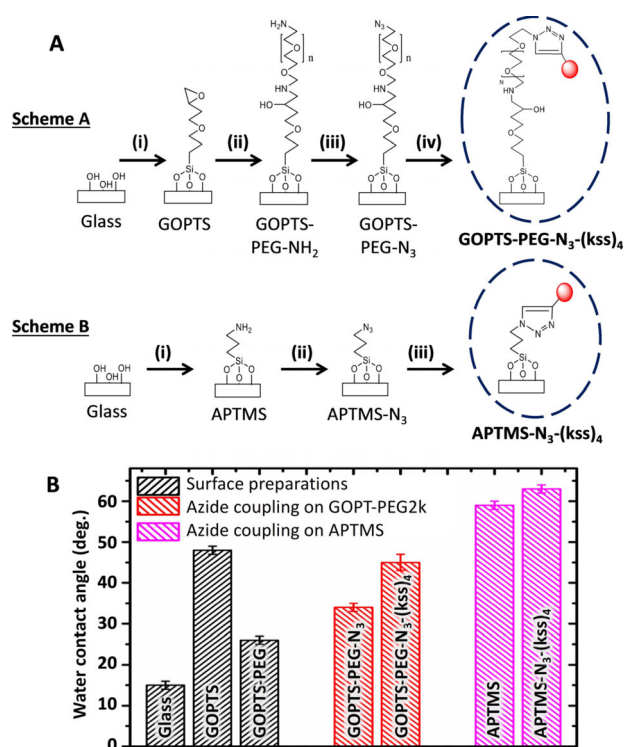


Figure 2. A) Surface modification schemes for generating PEG-tethered (kss)₄ (i.e. Scheme A: GOPTS-PEG-N₃-(kss)₄) and (kss)₄ immobilized directly on the surface (i.e. Scheme B: APTMS-N₃-(kss)₄). B) Water contact angles measured after successive modification steps.

Figure 2A Scheme A: GOPTS-PEG-N₃-(kss)₄ and Scheme B: APTMS-N₃-(kss)₄, respectively.

Figure 2B shows water contact angle (WCA) data consistent with the expected changes in surface wettability after each modification step. For Scheme A, WCA increased with initial GOPTS modification (the organosilane is more hydrophobic than glass), and then decreased after coupling of diamino-PEG_{2K} (PEG-amine is hydrophilic). Subsequent conversion of the PEG terminal amine to a non-cationic azide (N₃) and then CuAAC coupling of (kss)₄, which possesses numerous hydrophobic Nspe groups, successively increased WCA. Similarly, for Scheme B, successive increases in WCA was observed after the glass was silanized with the organosilane APTMS and then finally functionalized with (kss)₄.

The surface modifications were further confirmed by XPS. In the C1s spectrum (Figure 3A), a peak appeared at 286.5 eV after GOPTS silanization that indicated the expected addition of C–O bonds in the epoxide groups. PEG attachment was

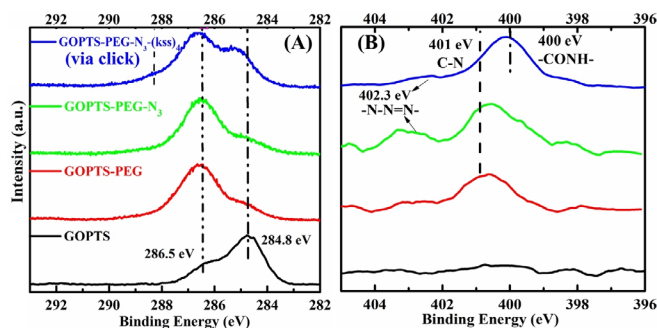


Figure 3. High-resolution C1s (A) and N1s (B) XPS spectra after each surface modification steps to achieve GOPTS-PEG-N₃-(kss)₄.

verified both by further increases of this C–O peak arising from the abundance of ether bonds in PEG, and by the appearance of the N1s N–C peak (401 eV) arising from the terminal amine of the PEG used (Figure 3B). Subsequent azide derivatization was confirmed by the appearance of a N–N=N[−] peak at 402.3 eV.^[13,19] Final peptoid coupling was confirmed by the substantial increase in peaks attributed to (kss)₄: C1s C–C (284.8 eV) and amide (288.3 eV),^[19] and N1s N–C=O (399.5 eV) and NH₂ (400.8 eV).^[20] By analyzing the attenuation of the Si2p signal from the SiO₂ substrate, we estimate a final peptoid surface density of 0.3 chain/nm² (Table S1 and related discussion).

Our PEG tether essentially forms a polymer brush, which should confer resistance against non-specific biomolecular adsorption and hence reduce bacterial attachment.^[5a,c] For initial evaluation of this anti-fouling property, we incubated GOPTS-PEG-N₃-(kss)₄ samples in 10% FBS (RT for 2 h). Following established protocol,^[21] ellipsometry measurements showed little change of the adlayer thickness before and after incubation (Figure S4: 3.5 ± 0.6 nm vs. 3.7 ± 0.5 nm, *n* = 3), indicating little protein adsorption on the PEG-tethered peptoid surface.

We then focused on evaluating the antimicrobial activity of the peptoid-functionalized surfaces against *P. aeruginosa* (PA01) due to its high relevance in HAI and risks associated

with biofilm formation.^[22] Figures 4A–D show typical images of attached live and dead/damaged bacterial cells stained, respectively by Syto 9 and propidium iodide (PI) after a 24 h attachment assay (5 × 10⁷ CFU mL^{−1}, 37 °C). Figure 4E summarizes this data in terms of actual surface coverage (θ_{coverage}) and normalized coverage (θ_{norm} ; relative to unmodified glass control).

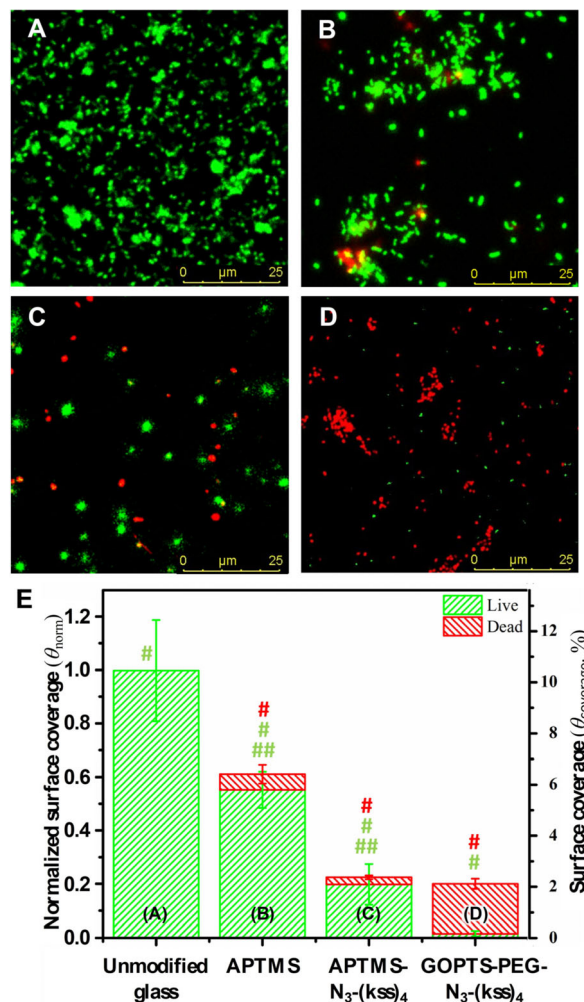


Figure 4. Typical confocal microscopy images of live (green) and dead/damaged (red) *P. aeruginosa* on: A) unmodified glass, B) APTMS, C) APTMS-N₃-(kss)₄, and D) GOPTS-PEG-N₃-(kss)₄. E) Quantified attachment data corresponding to confocal measurements. Both actual coverage (θ_{coverage}) and coverage normalized to attachment on unmodified glass (θ_{norm}) are shown. # and ## denote *p* < 0.005 and *p* < 0.05, respectively (one-way ANOVA).

On unmodified glass, a relatively high live *P. aeruginosa* $\theta_{\text{coverage}} = 10.5\%$ ($\theta_{\text{norm}} \equiv 1$) was observed, with only live bacteria found (Figure 4A). In contrast, on PEG-tethered (kss)₄ (i.e. GOPTS-PEG-N₃-(kss)₄), a much lower $\theta_{\text{norm}} = 0.21$ was observed, of which only a small fraction consisted of live bacteria ($\theta_{\text{norm-live}} = 0.02$) (Figure 4D and E). In comparison, although a similar overall attachment ($\theta_{\text{norm-total}} = 0.23$) was observed on (kss)₄ immobilized without PEG (i.e. APTMS-N₃-(kss)₄), most of these cells were still live ($\theta_{\text{norm-live}} = 0.20$) (Figure 4C and E). Therefore, the 2 kDa PEG tether was instrumental to achieving high surface activity.

We performed a further control with APTMS modified glass, which gave an amine-terminated surface (Figure 2A, Scheme B, step [i]), to mimic the positive charge expected on (kss)₄ surfaces. Figures 4B and E show $\theta_{\text{coverage}} = 6.5\%$ on APTMS, consisting mostly of live bacteria. This level of attachment was moderately lower than the control ($\theta_{\text{norm}} = 0.62$), a phenomenon that has occasionally been observed on amino-silane surfaces (Figure S5).^[23] However, this was still about 3-times higher than on the (kss)₄ functionalized surfaces. This suggests a role of the antimicrobial sequence in suppressing attachment, notwithstanding its cationic nature, that might be related to the ability of similarly short surface-grafted peptoids in resisting biofouling.^[21a,b] As for the minor fraction of dead/damaged attached cells ($\theta_{\text{norm-dead}} = 0.06$), a role for electrostatic surface adhesion that compromises the fluidity and integrity of bacterial membranes could be possible.

We had also performed our attachment assay against *E. coli* (ATCC 25922) but only very little attachment was observed and no statistically significant data were obtained. It is possible that some detachment had occurred under our conditions. Nonetheless, based on the even lower MIC measured for our modified peptoids against *E. coli* (and *S. aureus*) than *P. aeruginosa* (Figure S3), we anticipate that GOPTS-PEG-N₃-(kss)₄ surface modification would be effective against these strains.

Overall, the results for our PEG-tethered peptoid were characterized by low live bacterial attachment and a high proportion of dead/damaged cells. Our immobilized (lateral) density of 0.3 chain/nm² (see XPS analysis), considered together with the flexibility in both lateral and vertical movement allowed by the 20 nm contour length of PEG-N₃-(kss)₄, imply a maximum „volumetric“ separation of about 5 nm between immobilized (kss)₄ sequences (see ESI for calculations). This is equivalent to the average molecular separation found in a 25 mM solution, which is orders of magnitude higher than the MICs of (kss)₄. Thus, surface immobilization can generate a very high local concentration of AMPs.

Indeed, past studies have focused on increasing the immobilized density of AMPs.^[12,23–25] However, AMPs generally possess hydrophobic and cationic groups, both of which promote undesirable bacterial attachment. Plotting our results alongside past studies, where data for calculating AMP separation are available (see ESI), shows many reports of high live attachments, especially those with relatively shorter AMP separations (i.e. high AMP densities) (Figure 5A). Immobilization directly on silanized surfaces generally resulted in the shortest separations since silanization gives a high density of surface coupling groups. Tethering AMPs at the tip of polymer brushes, including our design, generally increased separations because the polymer chains prevent close packing and enable lateral and vertical movement around the anchor point of the polymer tether. However, some studies had attached multiple AMPs along the length of the polymer chains to increase immobilization density,^[23b,24] reducing AMP separation. Overall, Figure 5A shows it is possible to decrease live attachment by increasing AMP separation, despite the diverse bacteria types and assay protocols surveyed. Moreover, our current design coupling a single AMP on PEG_{2k} gave the lowest attachment at the largest

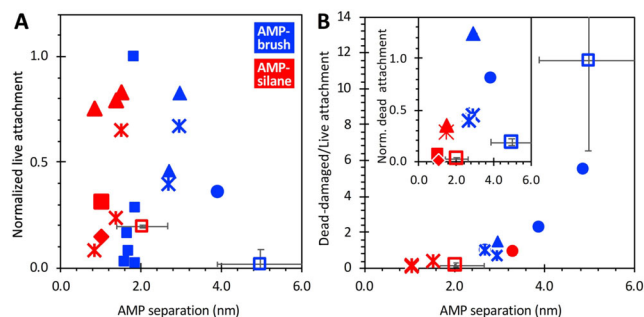


Figure 5. A) Live bacterial attachment normalized to levels on unmodified substrate (glass or Ti). B) Ratio of dead/damaged bacterial attachment versus live attachment shown in (A). The inset shows the original dead attachment data. Open squares (□) indicate the present study for *P. aeruginosa*. Other symbols indicate literature data for *P. aeruginosa* (■),^[23c,24] *E. coli* (●),^[12,25] *S. aureus* (◆),^[23c] *L. salivarius* (▲),^[23a,b] and *S. sanguinis* (*).^[23a,b] Attachment was measured by either imaging stained cells or re-culturing of attached bacteria.

AMP separation. This lowered fouling was corroborated by the low FBS adsorption observed (Figure S6).

Turning to damaged/dead bacterial attachment, Figure 5B-inset shows that AMPs coupled at intermediate (3–4 nm) separations on brushes exhibited the highest apparent surface activity (i.e. highest dead attachments). This is consistent with our hypothesis that a polymer tether can introduce flexibility in molecular arrangement and orientation for enhanced membrane interactions. However, attached dead bacteria could still lead to biofilm formation as well as acute immune responses. Figure 5B plots the same data ratioed against live attachment, to highlight cases with low overall attachment as well as relatively high activity. This reveals a remarkable correlation between increasing AMP separation and relative activity, despite the diverse experiments compared. In fact, whereas our APTMS-N₃-(kss)₄ design exhibited a low relative activity similar to other silane surfaces, our GOPTS-PEG-N₃-(kss)₄ brush design had the highest separation (5 nm) as well as the highest relative activity. Naturally, it can also be expected that the relative activity would decrease at very large AMP separations, which implies a very low density of AMPs insufficient for disrupting the membrane of a bacterium. An intermediate AMP separation should therefore exist for exhibiting an optimal relative activity.

In conclusion, we have shown that a model antimicrobial peptoid AMP mimic is amenable to modification of both its C- and N- termini, and we demonstrated a one-step protocol for introducing azide-terminations on amino-functionalized surfaces for CuAAC „click“ surface coupling. These demonstrations enabled a study of AMP immobilization design showing that surface activity is strongly enhanced by a polymer (PEG_{2k}) tether, consistent with the importance of engineering spatial flexibility and vertical reach for suitable surface interactions with bacteria. Moreover, we introduce AMP separation as a new parameter for characterizing immobilized AMP anti-biofouling. This parameter highlights the very high local AMP concentrations achieved by surface immobilization. It also reveals, by comparison with literature data, a strong correlation be-

tween increasing AMP separation and increasing relative surface activity, indicated by a high proportion of dead/damaged bacteria among a low level of attachment. In fact, our PEG coupling design exhibited the largest AMP separation and also the highest relative activity. The present results therefore highlight the potential of optimizing AMP separation, rather than immobilization density, to enable both surface activity and reduced bacterial attachment.

Acknowledgements

A.H. acknowledges the Commonwealth Scholarship Commission for a Split Site award (INCN-2017-50). The authors thank the EPSRC (EP/N010914/1), the Stewart fund at Strathclyde PAC, and Tenovus Scotland (S15/29) for equipment funding. K.F. also acknowledges BBSRC (BB/R00899X/1) for financial support.

Conflict of interest

The authors declare no conflict of interest.

Keywords: antimicrobial peptides · bacterial attachment · biointerfaces · click chemistry · peptoids

- [1] a) J. W. Costerton, P. S. Stewart, E. P. Greenberg, *Science* **1999**, *284*, 1318–1322; b) E. M. Hetrick, M. H. Schoenfish, *Chem. Soc. Rev.* **2006**, *35*, 780–789; c) C. Desrousseaux, V. Sautou, S. Descamps, O. Traore, *J. Hosp. Infect.* **2013**, *85*, 87–93.
- [2] a) R. Chmielewski, J. Frank, *Compr. Rev. Food Sci. Food Saf.* **2003**, *2*, 22–32; b) X. Z. Zhao, C. J. He, *ACS Appl. Mater. Interfaces* **2015**, *7*, 17947–17953; c) D. W. Wang, X. Wu, L. X. Long, X. B. Yuan, Q. H. Zhang, S. Z. Xue, S. M. Wen, C. H. Yan, J. M. Wang, W. Cong, *Biofouling* **2017**, *33*, 970–979.
- [3] C. D. Nadell, K. Drescher, K. R. Foster, *Nat. Rev. Microbiol.* **2016**, *14*, 589.
- [4] a) K. Bazaka, R. J. Crawford, E. P. Ivanova, *Biotechnol. J.* **2011**, *6*, 1103–1114; b) D. Perera-Costa, J. M. Bruque, M. L. González-Martín, A. C. Gómez-García, V. Vadillo-Rodríguez, *Langmuir* **2014**, *30*, 4633–4641; c) K. W. Kolewe, J. Zhu, N. R. Mako, S. S. Nonnenmann, J. D. Schiffman, *ACS Appl. Mater. Interfaces* **2018**, *10*, 2275–2281; d) A. Hasan, S. K. Pattanayek, L. M. Pandey, *ACS Biomater. Sci. Eng.* **2018**, *4*, 3224–3233.
- [5] a) C. Blaszykowski, S. Sheikh, M. Thompson, *Chem. Soc. Rev.* **2012**, *41*, 5599–5612; b) A. D. White, A. K. Nowinski, W. Huang, A. J. Keefe, F. Sun, S. Jiang, *Chem. Sci.* **2012**, *3*, 3488–3494; c) S. Lowe, N. M. O'Brien-Simpson, L. A. Connal, *Polym. Chem.* **2015**, *6*, 198–212.
- [6] a) F. Costa, I. F. Carvalho, R. C. Montelaro, P. Gomes, M. C. L. Martins, *Acta Biomater.* **2011**, *7*, 1431–1440; b) A. Andrea, N. Molchanova, H. Jenssen, *Biomolecules* **2018**, *8*, 27.
- [7] S. R. Palumbi, *Science* **2001**, *293*, 1786–1790.
- [8] a) N. Molchanova, P. R. Hansen, H. Franzyk, *Molecules* **2017**, *22*, 1430; b) M. Sieprawska-Lupa, P. Mydel, K. Krawczyk, K. Wójcik, M. Puklo, B. Lupa, P. Suder, J. Silberring, M. Reed, J. Pohl, *Antimicrob. Agents Chemother.* **2004**, *48*, 4673–4679; c) M. Xiao, J. Jasensky, J. Gerszberg, J. Chen, J. Tian, T. Lin, T. Lu, J. Lahann, Z. Chen, *Langmuir* **2018**, *34*, 12889–12896.
- [9] a) K. H. A. Lau, *Biomater. Sci.* **2014**, *2*, 627–633; b) A. S. Knight, E. Y. Zhou, M. B. Francis, R. N. Zuckermann, *Adv. Mater.* **2015**, *27*, 5665–5691.
- [10] M. El Yaagoubi, K. M. Tewari, K. H. A. Lau in *Self-assembling Biomaterials* (Eds.: H. S. Azevedo, R. M. P. da Silva), Elsevier-Woodhead, Amsterdam, **2018**, pp. 95–112.
- [11] a) N. P. Chongsiriwatana, J. A. Patch, A. M. Czyzewski, M. T. Dohm, A. Ivankin, D. Gidalevitz, R. N. Zuckermann, A. E. Barron, *Proc. Natl. Acad. Sci. USA* **2008**, *105*, 2794–2799; b) J. A. Patch, A. E. Barron, *J. Am. Chem. Soc.* **2003**, *125*, 12092–12093.
- [12] A. R. Statz, J. P. Park, N. P. Chongsiriwatana, A. E. Barron, P. B. Messersmith, *Biofouling* **2008**, *24*, 439–448.
- [13] J. He, J. Chen, G. Hu, L. Wang, J. Zheng, J. Zhan, Y. Zhu, C. Zhong, X. Shi, S. Liu, *J. Mater. Chem. B* **2018**, *6*, 68–74.
- [14] J. Seo, G. Ren, H. Liu, Z. Miao, M. Park, Y. Wang, T. M. Miller, A. E. Barron, Z. Cheng, *Bioconjugate Chem.* **2012**, *23*, 1069–1079.
- [15] a) M. Zelzer, L. E. McNamara, D. J. Scurr, M. R. Alexander, M. J. Dalby, R. V. Ulijn, *J. Mater. Chem.* **2012**, *22*, 12229–12237; b) J. N. Roberts, J. K. Sahoo, L. E. McNamara, K. V. Burgess, J. Yang, E. V. Alakpa, H. J. Anderson, J. Hay, L. A. Turner, S. J. Yarwood, M. Zelzer, R. O. Oreffo, R. V. Ulijn, M. J. Dalby, *ACS Nano* **2016**, *10*, 6667–6679.
- [16] U. Jonas, C. Krüger, *J. Supramol. Chem.* **2002**, *2*, 255–270.
- [17] R. Chapman, K. A. Jolliffe, S. Perrier, *Aust. J. Chem.* **2010**, *63*, 1169–1172.
- [18] V. V. Rostovtsev, L. G. Green, V. V. Fokin, K. B. Sharpless, *Angew. Chem. Int. Ed.* **2002**, *41*, 2596–2599; *Angew. Chem.* **2002**, *114*, 2708–2711.
- [19] W. Lin, C. Junjian, C. Chengzhi, S. Lin, L. Sa, R. Li, W. Yingjun, *J. Mater. Chem. B* **2015**, *3*, 30–33.
- [20] A. Gouget-Laemmel, J. Yang, M. Lodhi, A. Siriwardena, D. Aureau, R. Boukherroub, J.-N. Chazalviel, F. Ozanam, S. Szunerits, *J. Phys. Chem. C* **2013**, *117*, 368–375.
- [21] a) K. H. A. Lau, C. Ren, S. H. Park, I. Szeleifer, P. B. Messersmith, *Langmuir* **2012**, *28*, 2288–2298; b) K. H. A. Lau, C. Ren, T. S. Sileika, S. H. Park, I. Szeleifer, P. B. Messersmith, *Langmuir* **2012**, *28*, 16099–16107; c) K. H. A. Lau, T. S. Sileika, S. H. Park, A. M. L. Sousa, P. Burch, I. Szeleifer, P. B. Messersmith, *Adv. Mater. Interfaces* **2015**, *2*, 1400225.
- [22] S. L. Percival, L. Suleman, C. Vuotto, G. Donelli, *J. Med. Microbiol.* **2015**, *64*, 323–334.
- [23] a) M. Godoy-Gallardo, C. Mas-Moruno, M. C. Fernández-Calderón, C. Pérez-Giraldo, J. M. Manero, F. Albericio, F. J. Gil, D. Rodríguez, *Acta Biomater.* **2014**, *10*, 3522–3534; b) M. Godoy-Gallardo, C. Mas-Moruno, K. Yu, J. M. Manero, F. J. Gil, J. N. Kizhakkedathu, D. Rodríguez, *Biomacromolecules* **2015**, *16*, 483–496; c) R. Chen, M. D. Willcox, K. K. Ho, D. Smyth, N. Kumar, *Biomaterials* **2016**, *85*, 142–151.
- [24] G. Gao, D. Lange, K. Hilpert, J. Kindrachuk, Y. Zou, J. T. J. Cheng, M. Kazemzadeh-Narbat, K. Yu, R. Wang, S. K. Straus, D. E. Brooks, B. H. Chew, R. E. W. Hancock, J. N. Kizhakkedathu, *Biomaterials* **2011**, *32*, 3899–3909.
- [25] M. Gabriel, K. Nazmi, E. C. Veerman, A. V. Nieuw Amerongen, A. Zentner, *Bioconjugate Chem.* **2006**, *17*, 548–550.

Manuscript received: February 11, 2020

Accepted manuscript online: February 14, 2020

Version of record online: ■■■■■ 0000

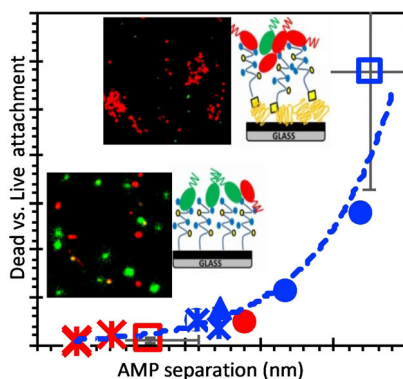
COMMUNICATION

Peptidomimetics

A. Hasan, K. Lee, K. Tewari, L. M. Pandey,
P. B. Messersmith, K. Faulds, M. Maclean,
K. H. A. Lau*

■■ - ■■

Surface Design for Immobilization of
an Antimicrobial Peptide Mimic for
Efficient Anti-Biofouling



Efficient anti-biofouling: We show that an archetypical antimicrobial peptoid could retain high activity even with terminal modifications. Immobilization by alkyne–azide „click” coupling on one-step modified amino-surfaces was demonstrated. Appropriate spatial separation between immobilized peptoids, rather than increasing surface density, was found to promote both resistance against bacterial attachment and AMP surface activity.