



This item was submitted to Loughborough's Institutional Repository by the author and is made available under the following Creative Commons Licence conditions.



CC creative commons
COMMONS DEED

Attribution-NonCommercial-NoDerivs 2.5

You are free:

- to copy, distribute, display, and perform the work

Under the following conditions:

BY: **Attribution.** You must attribute the work in the manner specified by the author or licensor.

Noncommercial. You may not use this work for commercial purposes.

No Derivative Works. You may not alter, transform, or build upon this work.

- For any reuse or distribution, you must make clear to others the license terms of this work.
- Any of these conditions can be waived if you get permission from the copyright holder.

Your fair use and other rights are in no way affected by the above.

This is a human-readable summary of the [Legal Code \(the full license\)](#).

[Disclaimer](#) 

For the full text of this licence, please go to:
<http://creativecommons.org/licenses/by-nc-nd/2.5/>



Department of Economics

Economic Research Paper No. 00/2

**Properties of Macroeconomic
Forecast Errors**

David I. Harvey and Paul Newbold

January 2000

Centre for International, Financial and Economics Research
Department of Economics
Loughborough University
Loughborough
Leics., LE11 3TU
UK

Tel: + 44 (0)1509 222734
Fax: + 44 (0) 1509 223910
Email: E.J.Pentecost@lboro.ac.uk

Director : Dr Eric J Pentecost
Deputy Director : Professor C J Green

Associate Directors:

Professor Kenneth J Button, George Mason University, USA
Professor Peter Dawkins, University of Melbourne, Australia
Professor Robert A Driskill, Vanderbilt University, USA
Professor James Gaisford, University of Calgary, Canada
Professor Andre van Poeck, University of Antwerp, Belgium
Professor Amine Tarazi, University of Limoges, France

Properties of Macroeconomic Forecast Errors

DAVID I. HARVEY

Department of Economics, Loughborough University, Loughborough, Leicestershire, LE11 3TU, UK
(tel.: +44 (0)1509 222712, fax: +44 (0)1509 223910, e-mail: D.I.Harvey@Lboro.ac.uk)

and

PAUL NEWBOLD

School of Economics, University of Nottingham, University Park, Nottingham, NG7 2RD, UK
(tel.: +44 (0)115 9515392, fax: +44 (0)115 9514159, e-mail: Paul.Newbold@Nottingham.ac.uk)

ABSTRACT

This paper investigates the distributional properties of individual and consensus time series macroeconomic forecast errors, using data from the Survey of Professional Forecasters. The degree of autocorrelation and the presence of ARCH in the consensus errors is also determined. We find strong evidence of leptokurtic forecast errors and some evidence of skewness, suggesting that an assumption of error normality is inappropriate; many of the forecast error series are found to have non-zero mean, and we find sporadic evidence of consensus error ARCH. Properties of the distribution of cross-sectional forecast errors are also examined.

KEY WORDS: Survey data; Forecast error distribution; Non-normality.

The distributional properties of economic forecast errors are important from the perspectives of both *ex ante* prediction and *ex post* forecast evaluation. With regard to the former, it is good practice to supplement point forecasts with an estimate of the uncertainty associated with the prediction, especially when one considers the role of forecasting in decision making and policy. The most common approach is to produce a (symmetric) prediction interval around the point forecast, where the actual is predicted to lie between certain limits with a specified probability, although recently the more general approach of density forecasting has received more attention, involving estimation of the probability distribution of possible outturns (see, for example, Diebold, Tay and Wallis, 1999, and Tay and Wallis, 2000). Prediction intervals can be computed in numerous ways (see Chatfield, 1993), but the methods generally rely on some understanding or assumption of the underlying forecast error distribution. An assumption of forecast error normality is commonplace; for example, both the Bank of England and the National Institute of Economic and Social Research utilise the normal distribution when generating their interval and density forecasts of UK macroeconomic variables (Wallis, 1999; Tay and Wallis, 2000).

From the perspective of *ex post* forecast evaluation, forecast error distribution properties are equally important when assumptions concerning the error distribution are made. For example, standard tests of equal forecast accuracy and forecast encompassing typically assume normally distributed errors. Diebold and Mariano (1995) and Harvey, Leybourne and Newbold (1998) examine tests of these two hypotheses respectively, and demonstrate each test's lack of robustness when the errors are non-normal. In both cases, alternative robust tests are proposed (Harvey, Leybourne and Newbold, 1997, also propose a small-sample modification to the Diebold-Mariano test).

Given these considerations, it is interesting to examine the distributional characteristics of past forecast errors, and particularly the extent to which the distributions follow or depart from the normal distribution. Although some work has been done in this area (for example, Zarnowitz and Braun, 1993), little has been done on the properties of *individual* forecasters as opposed to the consensus forecasts, or with recent data. This paper analyses predictions from a panel of US forecasters, taken from the Survey of Professional Forecasters, primarily using conventional summary statistics, for both individual forecasters and the consensus (mean) forecasts. The forecasts are of inflation, GDP growth, the short-term interest rate and the unemployment rate over four horizons.

In addition to the investigation of distributional forecast error properties, we also

analyse serial dependence in the forecast error time series. The order of any autocorrelation present in the errors is determined, and we test for the presence of forecast error autoregressive conditional heteroskedasticity (ARCH). The latter property is also important for the forecast evaluation tests mentioned above, as discussed by Harvey, Leybourne and Newbold (1999b) who highlight the problematic effects of ARCH on the hypothesis tests, and suggest alternative procedures accordingly. Due to data constraints, this serial dependence analysis is performed only for the consensus forecast errors. Finally, we also examine the cross-sectional properties of the forecast errors, again using summary statistics to characterise aspects of the underlying distributions.

The paper is structured in the following way. Section 1 outlines the data employed in the study, including detail on the Survey of Professional Forecasters. Sections 2 and 3 present our analysis of the time series properties of the errors, for individual forecasters in the survey and for the consensus forecasts respectively. Section 4 addresses the issue of cross-section forecast error properties, and Section 5 concludes.

1. DATA

The data are errors from point forecasts of four US macroeconomic variables – the percentage change in the consumer price index (CPI), the percentage change in real gross domestic product (GDP), the 3-month Treasury bill (T-bill) rate and the civilian unemployment rate. The percentage changes in CPI and real GDP are measured as changes on the previous quarter, expressed as an annual percentage. For each economic variable, the data are errors from a panel of forecasts, with predictions being made from one to four steps ahead. Forecasts are made at quarterly intervals over the period 1981:3-1997:4, with the exception of the unemployment rate which has earlier coverage, extending the sample to 1968:4-1997:4.

The forecasts are taken from the Survey of Professional Forecasters (SPF), which provides a quarterly survey of a number of US macroeconomic forecasts. The survey began in 1968 as the ASA-NBER Economic Outlook Survey, organised jointly by the American Statistical Association and the National Bureau of Economic Research, then in 1990 changed hands and was extended and relaunched by the Federal Reserve Bank of Philadelphia as the SPF. The survey asks a fairly diverse range of private sector forecasters to provide point forecasts for a variety of variables and horizons, plus density forecasts for GDP and its deflator. There are about thirty respondents each quarter on average, and the SPF maintains a

policy of forecaster anonymity. Zarnowitz (1969) and Croushore (1993) provide further detail on the survey. Much work has been done using data from the SPF, investigating a variety of issues including forecast performance and accuracy (for example Zarnowitz, 1984, Fair and Shiller, 1989, and Zarnowitz and Braun, 1993), forecast rationality (for example Zarnowitz, 1985, Keane and Runkle, 1990, and Baghestani and Kianian, 1993), and forecast uncertainty and density forecasts (for example Lahiri and Teigland, 1987, Zarnowitz and Lambros, 1987, and Diebold, Tay and Wallis, 1999). The full SPF data set can be obtained from the Philadelphia Federal Reserve Board website; this site also contains a more complete set of references to work that has made use of or discussed the SPF data in some way.

Although the SPF dates back to 1968, many variables only entered the survey in 1981 (or later). We have elected to analyse the forecast errors of key macroeconomic variables which receive most economic and political interest, thus preferring real GDP and the CPI to nominal GDP and its price deflator respectively, even though the latter have longer samples in the survey.

There are two peculiarities associated with the real GDP forecasts which should be noted. First, prior to 1992, the survey reports forecasts for real gross national product (GNP). This should have little impact on our results since the analysis solely concerns forecast errors, which were constructed using corresponding output measures for actuals and forecasts. (For notational convenience, here and throughout the paper we refer to these errors simply as real GDP forecast errors.) Secondly, respondents predict the level of real GDP rather than its percentage change. However, as well as predicting future outturns of real GDP, the forecasters also provide predictions of its level in the current and past quarter. The percentage change forecast made by a given forecaster can therefore be derived by comparing their h -steps ahead prediction with their estimate of the current quarter value.

The error made by forecaster i at time t for a given variable and horizon is given by $e_{it} = y_t - f_{it}$, where f_{it} denotes the forecast and y_t the corresponding actual. Actuals for the percentage change in the CPI, the T-bill rate and the unemployment rate were all obtained from Datastream. For the percentage change in real GDP and GNP, levels data were taken from the Federal Reserve Bulletin, using first published (unrevised) values, then converted to annualised percentage changes on the previous quarter accordingly.

2. INDIVIDUAL FORECASTER ERRORS

From the full SPF data on the four variables described above, we initially investigate properties of individual forecasters' predictions over time, in particular by examining summary statistics for the forecast error time series. Although our samples range from 1968/1981 to 1997, the forecasting records of particular survey respondents are generally much shorter; indeed some forecasters only have entries for a few surveys over that time span. We exclude respondents for whom there are less than an arbitrarily chosen minimum number of forecasts recorded. Clearly, a trade-off exists between the number of included forecasters and the minimum number of observations required for inclusion. After some experimentation, a minimum number of thirty observations seems to provide the best balance, given the estimation requirements of our analysis.

It is important to note that we do not require the included time series to be unbroken; consequently, the forecast error series have a number of 'missing observations' in this sense. Such a feature is not problematic for estimation of the summary statistics, but does preclude any analysis of serial dependence, for example autocorrelation and ARCH; this limitation is addressed in the next section.

For each variable and horizon, we estimate several summary statistics for each included forecaster: the mean (\bar{e}_i), standard deviation (s_i), skewness and kurtosis. We employ 'bias-corrected' skewness and kurtosis estimators (see, for example, Kendall, Stuart and Ord, 1987, chapter 3) given by

$$\text{Skewness} = \frac{n_i}{(n_i - 1)(n_i - 2)} \sum_{t=1}^{n_i} \left(\frac{e_{it} - \bar{e}_i}{s_i} \right)^3$$

$$\text{Kurtosis} = \frac{n_i(n_i + 1)}{(n_i - 1)(n_i - 2)(n_i - 3)} \sum_{t=1}^{n_i} \left(\frac{e_{it} - \bar{e}_i}{s_i} \right)^4 - \frac{3(n_i - 1)^2}{(n_i - 2)(n_i - 3)} + 3$$

where n_i is the number of observations ($n_i \geq 30$) for forecaster i ; the kurtosis measure is defined such that the normal distribution has kurtosis equal to three. These summary statistic estimates are subsequently averaged across the forecasters to provide the mean summary statistic measures given in Table 1, along with the corresponding standard errors. The number of forecasters included in each case (i.e. those with at least thirty observations) is also listed in the table. Although there are relatively few forecasters for the inflation, GDP growth and T-bill rate variables, the advantage of our selection procedure is that the average length of each forecaster's error series is approximately 45, thereby providing reasonable samples for summary statistic estimation.

Results for the forecast error means highlight a certain degree of bias. The percentage change in CPI is, on average, underpredicted by 0.5% one step ahead, rising to 0.9% four steps ahead. This is consistent with Zarnowitz and Braun (1993) who find similar behaviour displayed in consensus forecasts of inflation, also using SPF data. It is also perhaps unsurprising that the magnitude of the errors grows with the forecast horizon, due to the effects of error accumulation. A similar pattern of underprediction can be observed for the T-bill rate forecasts, although the magnitude is smaller. The error measures for the GDP growth forecasts are also negative at each horizon, but due to larger variability, the mean summary statistics are insignificant at the 5%-level (using an approximate significance rule of ± 2 standard errors). The unemployment rate forecast errors have more mixed behaviour: one step ahead the mean summary statistic is just less than zero and marginally significant, two steps ahead the measure is insignificant, while the three and four steps ahead errors display significant evidence of overprediction, albeit of a relatively minor degree (approximately 0.1%).

The means of the forecast error standard deviations are largely constant around 2-3% for inflation and GDP growth, whereas for the T-bill rate and unemployment rate predictions, they rise with the horizon from approximately 1% to 2% and 0.5% to 1% respectively. The latter feature indicates that the forecast error variance may be positively related to uncertainty at the time of prediction. It is also noticeable that the mean standard deviations for the unemployment rate forecast errors are substantially smaller than for the other variables considered; combining this observation with the variable's smaller mean error measures suggests that this series may be somewhat easier to predict.

Regarding the mean skewness measures, we find strong evidence of negative skewness for inflation at all horizons and the T-bill rate one and two steps ahead. Equally strong evidence exists for the unemployment rate errors being positively skewed; there is no significant evidence of skewness for the GDP growth forecast errors. With the exception of the real GDP errors, there is thus little support for an assumption of symmetry in the distribution of macroeconomic forecast errors.

The mean kurtosis values given in the table are greater than three without exception. Further, in all but two cases (T-bill rate three and four steps ahead; these results are treated as exceptions in the following discussion), the measures are significantly greater than three, implying strong evidence of leptokurtic forecast errors. The excess kurtosis is generally larger for the inflation and GDP growth errors (kurtosis approximately 6.5 or more) than for

the T-bill rate and unemployment rate errors (kurtosis approximately 4.5), but fat-tailed behaviour is a clear feature of these macroeconomic forecast errors.

It is also interesting to analyse the kurtosis values from another perspective. Sampling variability enters our results not only through the averaging of the summary statistics, but also through those statistics' initial estimation. If we treat a given mean kurtosis value as a kurtosis estimate derived from a series of length equal to the (rounded) mean number of observations for that variable and horizon, an interesting question is then whether this estimated kurtosis is significantly greater than three, thus taking account of sampling variability in the statistic's estimation. An approximate test of the null that this population kurtosis is three against a one-sided alternative can be performed via Monte Carlo simulation. The distribution of estimated kurtosis values under the null can be simulated by repeatedly drawing a sample of m realisations from the standard normal distribution and calculating the sample kurtosis, where m is the (rounded) mean number of observations for that variable and horizon. Simulation in this manner (we use 10,000 replications) permits calculation of the test's probability values. The results of this experiment are given in Table 1 for each variable and horizon, and reinforce the above inference, with rejections of the null occurring at least at the 1%-level for inflation and GDP growth, the 2%-level for the T-bill rate (excepting three and four steps ahead as before), and the 5%-level for the unemployment rate.

The leptokurtosis displayed in the series provides evidence in favour of non-normal forecast error distributions; the most obvious alternative which admits such fat-tailed characteristics is the Student's t distribution. Under the assumption that the generating distribution underlying the mean summary statistics is Student's t , the final row of Table 1 gives the corresponding degrees of freedom that the mean kurtosis values imply. The degrees of freedom are about five for the inflation and GDP growth errors, rising slightly for the T-bill rate and unemployment rate errors (again with the two T-bill rate exceptions). These values give an impression of the extent to which the forecast error distributions depart from normality, and suggest that an assumption of normal errors in interval prediction or forecast evaluation is misplaced. The non-normal distributions simulated in Diebold and Mariano (1995) and Harvey, Leybourne and Newbold (1997, 1998) are Student's t with five and six degrees of freedom; these results provide evidence in favour of such simulations, and add weight to these authors' recommendation to use robust or non-parametric tests for equal forecast accuracy and encompassing.

3. CONSENSUS FORECAST ERRORS

In addition to the analysis of individual forecaster performance, it is also of interest to study the consensus forecast, defined here as the sample mean of the predictions at a particular point in time. The consensus forecast can be thought of as a simple combined forecast where all the available forecasts are pooled with equal weight. The consensus forecast error, for a given variable and horizon, is therefore defined by

$$cfe_t = N_t^{-1} \sum_{i=1}^{N_t} e_{it}$$

where N_t is the number of available forecasts at time t . We first examine the properties of the consensus forecast error time series by way of summary statistics as in the previous section (obviously there is now only one summary statistic for a particular variable and horizon, and no subsequent averaging takes place). The results are given in Table 2.

The distributional properties of the consensus errors are not dissimilar to those of the individual forecasters analysed above. Underprediction of almost identical magnitudes is displayed in the inflation and T-bill rate forecast errors, the unemployment rate errors are close to zero, while the mean GDP growth forecast errors are more varied. Figures 1-4 provide plots of the consensus forecast errors for each variable and horizon through time (note that there are five quarters in which no survey respondents returned predictions for the unemployment rate four steps ahead, thus the time series is broken in two places early on). These plots show clearly the underprediction of inflation and the interest rate, and the relative accuracy of the unemployment rate consensus forecasts. Excepting the GDP growth forecasts, the pattern of standard deviations rising with the forecast horizon is again a feature of the errors (see Table 2); this increase in volatility can be seen in the plots, particularly for the T-bill rate and unemployment rate. The figures also highlight greater volatility exhibited in the early 1980s for most of the series.

The distributions of consensus forecast errors appear to lack symmetry across the variables and horizons, with negative skewness present in the case of inflation, GDP growth and the interest rate, but positive skewness in the case of the unemployment rate. Leptokurtosis is manifest in the consensus errors as well as individual forecasters' errors, with kurtosis estimates ranging from 4-8 (again treating the three and four steps ahead T-bill rate forecasts as exceptions). The probability values associated with the null that the kurtosis is three indicate rejection at very low significance levels, and the corresponding Student's t degrees of freedom are in the range 5-9, providing strong evidence that the consensus errors

are non-normal.

In contrast to the individual forecasts, the consensus series are not subject to the problem of missing observations since there are always some survey returns in each period for the variables and horizons we consider. The unbroken nature of these series therefore admits the possibility of serial dependence analysis, overcoming to some extent the aforementioned limitation of the individual series. However, there is one exception in our data: the four steps ahead consensus forecasts of the unemployment rate have five missing observations (as mentioned above). When examining serial dependence among these errors, we use the longest unbroken segment of the series, which amounts to dropping the first twenty four observations.

We examine two serial dependence properties of interest – the extent to which the consensus forecast errors are autocorrelated, and whether the errors exhibit ARCH-type behaviour. The order of autocorrelation present in a given consensus error time series is found by fitting moving average models of varying order; the preferred model being chosen by use of the Schwarz-Bayesian information criterion. Theoretically, optimal forecasts h -steps ahead have dependence of order $(h-1)$, but since our consensus forecasts may well lack optimality properties, higher order autocorrelation might be expected. Consequently, we consider moving average orders $(h-1)$, h and $(h+1)$ in our analysis. Table 3 contains the autocorrelation orders resulting from this selection process. Autocorrelation of order one is found to be present in all the one step ahead consensus forecasts; for longer horizons, the orders vary between h and $(h-1)$.

Testing for ARCH in the consensus forecast errors is performed using the standard Engle (1982) test, although we first filter the errors for the autocorrelation found to be present in the preceding analysis. The test is thus based on $T.R^2$ in the regression

$$\hat{u}_t^2 = \mathbf{a}_0 + \mathbf{a}_1 \hat{u}_{t-1}^2 + \dots + \mathbf{a}_p \hat{u}_{t-p}^2 + \mathbf{h}_t$$

where \hat{u}_t^2 are the squared residuals from the preferred moving average model fitted to the consensus forecast errors. The test statistic has an asymptotic \mathbf{c}^2 distribution with p degrees of freedom. Results of tests for relatively low order ARCH ($p = 1, 2$) are given in Table 3.

There is some evidence of ARCH in the consensus forecast errors we consider, but no general patterns emerge. Variables and horizons for which there are rejections at conventional significance levels in favour of ARCH error processes are inflation three steps ahead, GDP growth three and four steps ahead, the T-bill rate one step ahead and the

unemployment rate one and four steps ahead. The somewhat anomalous ARCH(2) test statistic for the one step ahead T-bill rate is driven by the first few observations: repetition of the test with these observations omitted leads to a much reduced test statistic and non-rejection of the null. The ARCH(1) test for this series is equally dependent on the first few observations, casting doubt on an inference of ARCH in these consensus errors. Overall, ARCH does seem to be present in *some* consensus errors at *some* horizons; however, the sporadic nature of the evidence precludes any general inference across variables or horizons.

4. CROSS-SECTION PROPERTIES

In this section we extend our analysis to study distributional characteristics of cross-sections of forecast errors. The same summary statistics as in the previous section are employed, although here the method differs. For a given variable and horizon, cross-section summary statistics are calculated using all the available forecasters at a given point in time; these are then averaged over time, yielding the mean summary statistics (and the standard errors associated with these means) presented in Table 4. The average of the cross-section means for each variable and horizon is the same as the mean of the consensus forecast error in Table 2; these results have already been discussed but are included here for completeness. The number of actuals in each case, i.e. the number of observations through time over which the statistics are averaged, is also given.

Three general observations can be drawn from these results. First, the mean cross-section standard deviations are broadly greater for longer horizon forecasts, although this is not a characteristic of the GDP growth forecast errors. Secondly, the mean cross-section skewness measures are insignificantly different from zero for inflation and GDP growth, but significantly negative for the T-bill rate and the unemployment rate (apart from unemployment one step ahead); however, the magnitudes involved for these latter variables are fairly small, indicating little deviation from symmetry. Finally, the mean cross-section kurtosis estimates are significantly greater than three for the inflation, GDP growth and unemployment rate forecast errors at all four horizons. The probability values (derived using simulation in a way comparable to that outlined in Section 2) in these cases all imply rejections of the null at the 10%-level confirming leptokurtic behaviour, and the Student's t degrees of freedom corresponding to the mean kurtosis estimates fall between five and ten, illustrating the extent of the non-normality. The detection of cross-section forecast error leptokurtosis is consistent with Harvey, Leybourne and Newbold (1999a), who find similar

properties among UK survey data on fixed event macroeconomic forecasts.

5. CONCLUSION

It is important for interval prediction and forecast evaluation to understand the properties of forecast errors. This paper has investigated distributional and serial dependence properties of errors from predictions of macroeconomic variables using a panel of US forecasters. Analysis of summary measures of error for individual forecasters and the consensus forecasts showed leptokurtosis to be a feature for almost all the variables and horizons we considered. This result necessitates the conclusion that the frequently made assumption of forecast error normality is untenable, its use resulting in overly narrow prediction intervals and problems with evaluation tests reliant on such a premise. Further, evidence of skewness was also displayed for a majority of variables and horizons in our sample, strengthening the argument against forecast error normality.

Our recommendation is therefore to make use of robust or non-parametric forecast evaluation tests, and in interval prediction, when an explicit distributional assumption is required, to utilise the Student's t distribution with relatively low degrees of freedom. On the latter point, the t distribution is symmetric and does not permit skewness; if the possibility of skewed forecast errors is also to be admitted, a more general distribution such as the non-central t distribution (see, for example, Johnson and Kotz, 1970, chapter 31) may be appropriate (as used by Lahiri and Teigland, 1987, in their analysis of SPF density forecasts).

In addition to these concerns, we found many of the forecast error series to have non-zero mean, with underprediction being a feature of the inflation and interest rate forecasts. ARCH was detected in some of the consensus forecast error time series, but not in general. Finally, analysis of cross-sections of forecast errors highlighted a significant degree of cross-section leptokurtosis.

REFERENCES

- Baghestani, H. M. and Kianian, A. M. (1993), "On the Rationality of US Macroeconomic Forecasts: Evidence from a Panel of Professional Forecasters", *Applied Economics*, 25, 869-878.
- Chatfield, C. (1993), "Calculating Interval Forecasts", *Journal of Business and Economic Statistics*, 11, 121-35.
- Croushore, D. (1993), "The Survey of Professional Forecasters", *Business Review*, Federal Reserve Bank of Philadelphia, November/December, 3-15.
- Diebold, F. X. and Mariano, R. S. (1995), "Comparing Predictive Accuracy", *Journal of Business and Economic Statistics*, 13, 253-263.
- Diebold, F. X., Tay, A. S. and Wallis, K. F. (1999), "Evaluating Density Forecasts of Inflation: The Survey of Professional Forecasters", in *Cointegration, Causality, and Forecasting: A Festschrift in Honour of Clive W. J. Granger*, eds. R. F. Engle and H. White, New York: Oxford University Press.
- Engle, R. F. (1982), "Autoregressive Conditional Heteroskedasticity with Estimates of the Variance of United Kingdom Inflation", *Econometrica*, 50, 987-1007.
- Fair, R. C. and Shiller, R. J. (1989), "The Informational Content of Ex Ante Forecasts", *Review of Economics and Statistics*, 71, 325-331.
- Harvey, D. I., Leybourne, S. J. and Newbold, P. (1997), "Testing the Equality of Prediction Mean Squared Errors", *International Journal of Forecasting*, 13, 281-291.
- Harvey, D. I., Leybourne, S. J. and Newbold, P. (1998), "Tests for Forecast Encompassing", *Journal of Business and Economic Statistics*, 16, 254-259.
- Harvey, D. I., Leybourne, S. J. and Newbold, P. (1999a), "Analysis of a Panel of UK Macroeconomic Forecasts", Loughborough University Economic Research Paper, No. 99/8.
- Harvey, D. I., Leybourne, S. J. and Newbold, P. (1999b), "Forecast Evaluation Tests in the Presence of ARCH", *Journal of Forecasting*, 18, 435-445.
- Johnson, N. L. and Kotz, S. (1970), *Distributions in Statistics: Continuous Univariate Distributions, Volume 2*, Boston: Houghton Mifflin.
- Keane, M. P. and Runkle, D. E. (1990), "Testing the Rationality of Price Forecasts: New Evidence from Panel Data", *American Economic Review*, 80, 714-735.
- Kendall, M. G., Stuart, A. and Ord, J. K. (1987), *Kendall's Advanced Theory of Statistics, Volume 1: Distribution Theory (5th ed.)*, London: Griffin.
- Lahiri, K. and Teigland, C. (1987), "On the Normality of Probability Distributions of Inflation and GNP Forecasts", *International Journal of Forecasting*, 3, 269-279.

- Tay, A. S. and Wallis, K. F. (2000), "Density Forecasting: A Survey", *Journal of Forecasting*, forthcoming.
- Wallis, K. F. (1999), "Asymmetric Density Forecasts of Inflation and the Bank of England's Fan Chart", *National Institute Economic Review*, 167, 106-112.
- Zarnowitz, V. (1969), "The New ASA--NBER Survey of Forecasts by Economic Statisticians", *American Statistician*, 23, 12-16.
- Zarnowitz, V. (1984), "The Accuracy of Individual and Group Forecasts from Business Outlook Surveys", *Journal of Forecasting*, 3, 11-26.
- Zarnowitz, V. (1985), "Rational Expectations and Macroeconomic Forecasts", *Journal of Business and Economic Statistics*, 3, 293-311.
- Zarnowitz, V. and Braun, P. (1993), "Twenty-Two Years of the NBER-ASA Quarterly Economic Outlook Surveys: Aspects and Comparisons of Forecasting Performance", in *Business Cycles, Indicators, and Forecasting*, eds. J. H. Stock and M. W. Watson, Chicago: University of Chicago Press.
- Zarnowitz, V. and Lambros, L. A. (1987), "Consensus and Uncertainty in Economic Prediction", *Journal of Political Economy*, 95, 591-621.

Table 1. Mean Summary Statistics for Individual Forecaster Errors

Summary statistic	Percentage change in CPI				Percentage change in real GDP				3-month Treasury bill rate				Unemployment rate			
	<i>h</i> = 1	<i>h</i> = 2	<i>h</i> = 3	<i>h</i> = 4	<i>h</i> = 1	<i>h</i> = 2	<i>h</i> = 3	<i>h</i> = 4	<i>h</i> = 1	<i>h</i> = 2	<i>h</i> = 3	<i>h</i> = 4	<i>h</i> = 1	<i>h</i> = 2	<i>h</i> = 3	<i>h</i> = 4
<i>No. forecasters</i>	11	11	11	11	11	11	11	11	11	11	11	11	47	47	47	39
No. observations	45.36 (2.20)	45.45 (2.14)	45.36 (2.08)	43.55 (1.56)	47.45 (1.74)	47.36 (1.74)	47.27 (1.68)	45.36 (1.25)	46.91 (1.99)	46.82 (1.99)	46.55 (1.92)	44.91 (1.48)	45.53 (2.02)	45.51 (2.02)	45.38 (2.00)	44.38 (1.95)
Mean	-0.51 (0.08)	-0.60 (0.08)	-0.78 (0.11)	-0.91 (0.13)	-0.31 (0.17)	-0.46 (0.26)	-0.27 (0.18)	-0.13 (0.24)	-0.13 (0.07)	-0.32 (0.10)	-0.48 (0.12)	-0.66 (0.15)	-0.03 (0.01)	0.03 (0.02)	0.12 (0.03)	0.11 (0.03)
Standard deviation	2.02 (0.11)	2.00 (0.11)	1.99 (0.13)	2.18 (0.12)	2.84 (0.27)	3.51 (0.38)	3.38 (0.43)	2.79 (0.15)	0.98 (0.07)	1.32 (0.07)	1.59 (0.09)	1.84 (0.10)	0.48 (0.01)	0.71 (0.02)	0.90 (0.02)	0.98 (0.02)
Skewness	-0.98 (0.23)	-0.76 (0.24)	-0.75 (0.21)	-1.09 (0.27)	0.11 (0.48)	-0.62 (0.72)	-0.21 (0.80)	0.06 (0.42)	-0.85 (0.32)	-0.63 (0.26)	-0.19 (0.16)	-0.07 (0.16)	0.67 (0.07)	0.92 (0.06)	0.95 (0.06)	0.90 (0.08)
Kurtosis	6.68 (0.54)	6.51 (0.72)	5.49 (0.46)	6.95 (0.77)	7.30 (2.28)	11.82 (3.37)	12.28 (4.23)	6.84 (1.19)	6.19 (1.04)	4.80 (0.75)	3.20 (0.22)	3.03 (0.32)	4.31 (0.17)	4.82 (0.18)	4.61 (0.16)	4.32 (0.16)
<i>Probability value</i>	0.001	0.002	0.009	0.002	0.001	0.000	0.000	0.001	0.002	0.022	0.301	0.398	0.049	0.022	0.031	0.050
<i>Student's t d.o.f.</i>	5.6	5.7	6.4	5.5	5.4	4.7	4.6	5.6	5.9	7.3	34.0	204.0	8.6	7.3	7.7	8.5

NOTES: Table entries are sample means of individual forecaster error summary statistics for all rows except those with italicised labels.

Standard errors of sample mean estimates are given in parentheses.

'*No. forecasters*' denotes the number of forecasters (the number of summary statistics) in each sample.

'*Probability value*' denotes the probability value associated with the test that, treating the mean kurtosis as a kurtosis estimate derived from a series of length equal to the (rounded) mean number of observations, the population kurtosis is 3 against a one-sided alternative.

'*Student's t d.o.f.*' denotes the degrees of freedom corresponding to the mean kurtosis if the generating distribution is Student's *t*.

Table 2. Summary Statistics for Consensus Forecast Errors

Summary statistic	Percentage change in CPI				Percentage change in real GDP				3-month Treasury bill rate				Unemployment rate			
	<i>h</i> = 1	<i>h</i> = 2	<i>h</i> = 3	<i>h</i> = 4	<i>h</i> = 1	<i>h</i> = 2	<i>h</i> = 3	<i>h</i> = 4	<i>h</i> = 1	<i>h</i> = 2	<i>h</i> = 3	<i>h</i> = 4	<i>h</i> = 1	<i>h</i> = 2	<i>h</i> = 3	<i>h</i> = 4
No. observations	66	66	66	66	66	66	66	66	66	66	66	66	117	117	117	112
Mean	-0.57	-0.69	-0.85	-1.01	-0.06	-0.12	-0.11	0.08	-0.08	-0.24	-0.44	-0.63	-0.04	-0.02	0.03	0.02
Standard deviation	1.76	1.77	1.78	1.86	2.11	2.24	2.21	2.17	0.83	1.13	1.37	1.60	0.39	0.59	0.78	0.96
Skewness	-1.54	-1.39	-1.53	-1.53	-0.28	-0.30	-0.34	-0.33	-1.19	-0.77	-0.40	-0.23	0.79	1.09	1.16	0.70
Kurtosis	8.07	7.90	7.81	7.58	5.20	4.58	4.76	4.45	6.19	4.31	3.20	2.70	4.15	5.22	5.24	5.21
<i>Probability value</i>	0.000	0.000	0.000	0.000	0.005	0.016	0.011	0.023	0.001	0.030	0.296	0.669	0.018	0.001	0.001	0.001
<i>Student's t d.o.f.</i>	5.2	5.2	5.2	5.3	6.7	7.8	7.4	8.1	5.9	8.6	34.0	-	9.2	6.7	6.7	6.7

NOTES: Table entries are consensus forecast error summary statistics for all rows except those with italicised labels.
'*Probability value*' denotes the probability value associated with the test that the population kurtosis is 3 against a one-sided alternative.
'*Student's t d.o.f.*' denotes the degrees of freedom corresponding to the kurtosis if the generating distribution is Student's *t*.

Table 3. Autocorrelation Specification and ARCH Tests for Consensus Forecast Errors

	Percentage change in CPI				Percentage change in real GDP				3-month Treasury bill rate				Unemployment rate			
	<i>h</i> = 1	<i>h</i> = 2	<i>h</i> = 3	<i>h</i> = 4	<i>h</i> = 1	<i>h</i> = 2	<i>h</i> = 3	<i>h</i> = 4	<i>h</i> = 1	<i>h</i> = 2	<i>h</i> = 3	<i>h</i> = 4	<i>h</i> = 1	<i>h</i> = 2	<i>h</i> = 3	<i>h</i> = 4
Autocorrelation order	1	1	3	3	1	1	2	3	1	1	3	4	1	2	3	4
ARCH(1) test statistic	1.23 [0.267]	1.60 [0.207]	0.32 [0.570]	0.09 [0.765]	0.54 [0.464]	0.00 [0.945]	5.26 [0.022]	0.10 [0.755]	6.71 [0.010]	0.66 [0.416]	0.48 [0.489]	1.28 [0.259]	2.85 [0.091]	2.09 [0.148]	2.54 [0.111]	5.69 [0.017]
ARCH(2) test statistic	1.88 [0.391]	2.03 [0.363]	5.73 [0.057]	0.23 [0.891]	0.54 [0.764]	4.39 [0.111]	7.92 [0.019]	6.18 [0.045]	28.42 [0.000]	1.76 [0.415]	1.28 [0.527]	1.71 [0.426]	8.69 [0.013]	2.11 [0.348]	4.08 [0.130]	6.66 [0.036]

NOTE: Probability values are given in brackets.

Table 4. Mean Summary Statistics for Cross-Sectional Forecast Errors

Summary statistic	Percentage change in CPI				Percentage change in real GDP				3-month Treasury bill rate				Unemployment rate			
	<i>h</i> = 1	<i>h</i> = 2	<i>h</i> = 3	<i>h</i> = 4	<i>h</i> = 1	<i>h</i> = 2	<i>h</i> = 3	<i>h</i> = 4	<i>h</i> = 1	<i>h</i> = 2	<i>h</i> = 3	<i>h</i> = 4	<i>h</i> = 1	<i>h</i> = 2	<i>h</i> = 3	<i>h</i> = 4
<i>No. actuals</i>	66	66	66	66	66	66	66	66	66	66	66	66	117	117	117	112
No. observations	29.39 (1.15)	29.41 (1.14)	29.27 (1.12)	28.42 (1.11)	30.05 (1.18)	30.02 (1.17)	29.82 (1.16)	28.97 (1.15)	29.67 (1.16)	29.62 (1.15)	29.42 (1.14)	28.64 (1.13)	38.06 (1.33)	38.03 (1.33)	37.90 (1.32)	36.35 (1.34)
Mean	-0.57 (0.22)	-0.69 (0.22)	-0.85 (0.22)	-1.01 (0.23)	-0.06 (0.26)	-0.12 (0.28)	-0.11 (0.27)	0.08 (0.27)	-0.08 (0.10)	-0.24 (0.14)	-0.44 (0.17)	-0.63 (0.20)	-0.04 (0.04)	-0.02 (0.05)	0.03 (0.07)	0.02 (0.09)
Standard deviation	0.78 (0.06)	0.77 (0.06)	0.82 (0.05)	0.86 (0.05)	1.46 (0.12)	1.67 (0.17)	1.62 (0.17)	1.56 (0.12)	0.41 (0.04)	0.54 (0.04)	0.64 (0.04)	0.75 (0.05)	0.24 (0.01)	0.30 (0.01)	0.36 (0.01)	0.53 (0.12)
Skewness	0.11 (0.11)	0.15 (0.12)	0.04 (0.13)	-0.04 (0.13)	-0.43 (0.20)	0.24 (0.25)	0.04 (0.23)	0.41 (0.22)	-0.26 (0.10)	-0.19 (0.07)	-0.13 (0.06)	-0.28 (0.06)	-0.15 (0.09)	-0.15 (0.07)	-0.26 (0.06)	-0.35 (0.07)
Kurtosis	4.40 (0.26)	4.66 (0.34)	4.86 (0.44)	4.71 (0.31)	7.48 (0.72)	8.63 (0.98)	8.17 (0.89)	8.06 (0.79)	3.98 (0.30)	3.47 (0.17)	3.20 (0.13)	3.36 (0.11)	4.26 (0.36)	3.99 (0.18)	4.00 (0.18)	4.12 (0.29)
<i>Probability value</i>	0.063	0.046	0.034	0.043	0.002	0.001	0.001	0.001	0.109	0.219	0.316	0.256	0.062	0.089	0.088	0.077
<i>Student's t d.o.f.</i>	8.3	7.6	7.2	7.5	5.3	5.1	5.2	5.2	10.1	16.8	34.0	20.7	8.8	10.1	10.0	9.4

NOTES: Table entries are sample means of cross-sectional forecast error summary statistics for all rows except those with italicised labels.

Standard errors of sample mean estimates are given in parentheses.

'*No. actuals*' denotes the number of predicted actuals (the number of summary statistics) in each sample.

'*Probability value*' denotes the probability value associated with the test that, treating the mean kurtosis as a kurtosis estimate derived from a series of length equal to the (rounded) mean number of observations, the population kurtosis is 3 against a one-sided alternative.

'*Student's t d.o.f.*' denotes the degrees of freedom corresponding to the mean kurtosis if the generating distribution is Student's *t*.

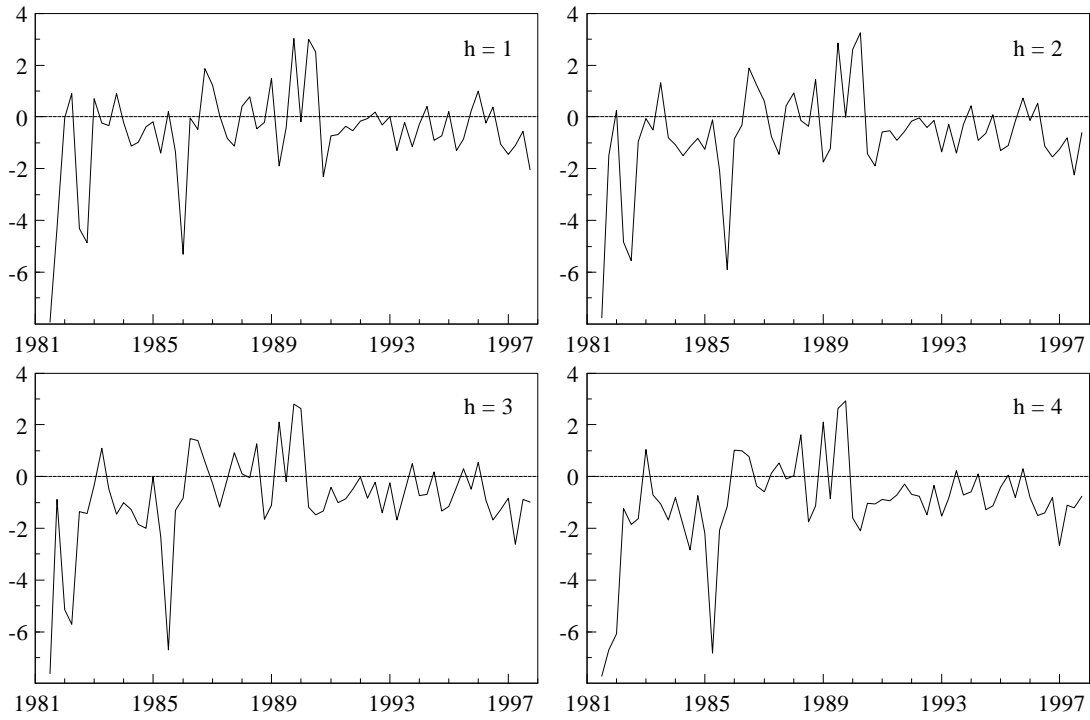


Figure 1. Consensus Forecast Errors: Percentage Change in CPI

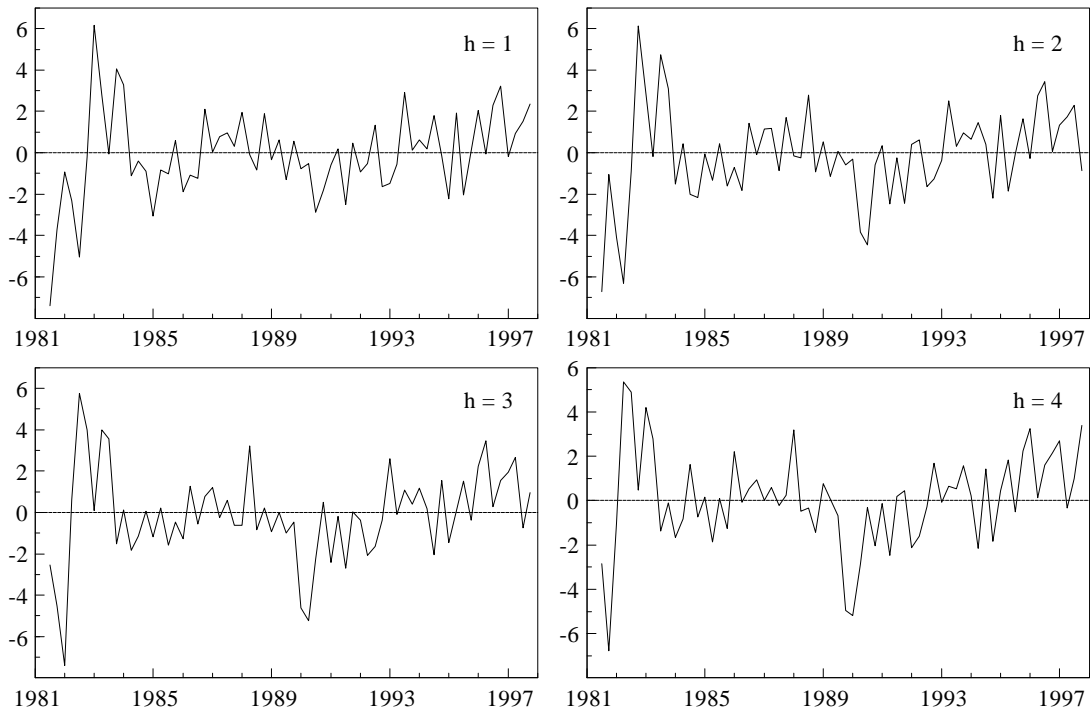


Figure 2. Consensus Forecast Errors: Percentage Change in real GDP

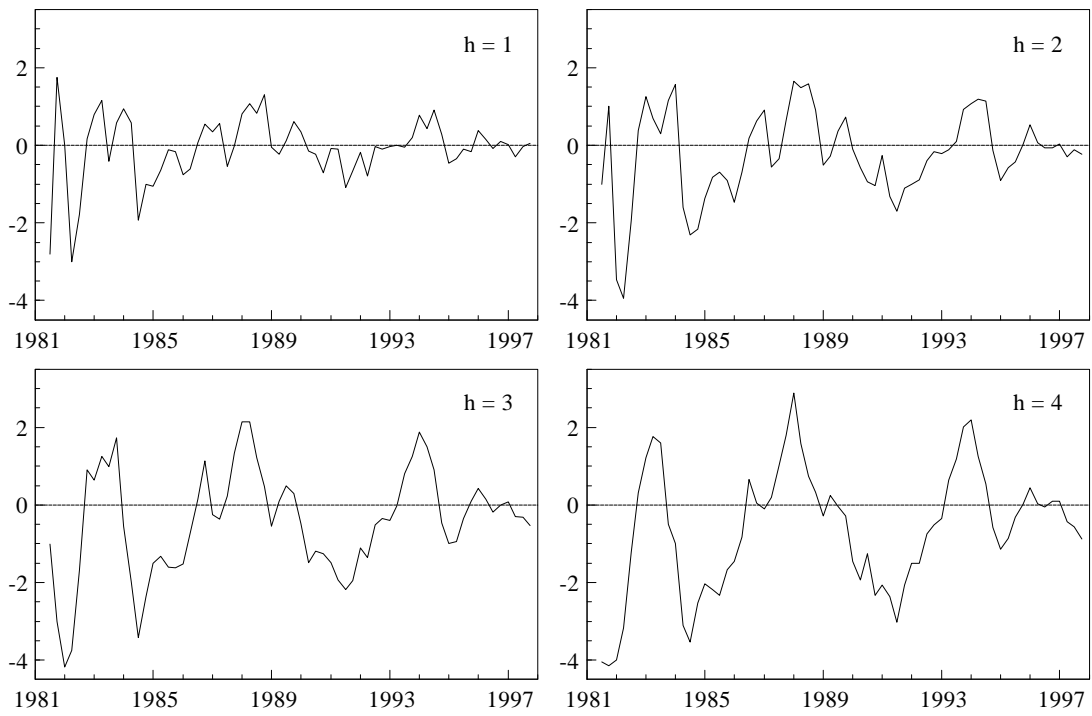


Figure 3. Consensus Forecast Errors: 3-Month Treasury Bill Rate

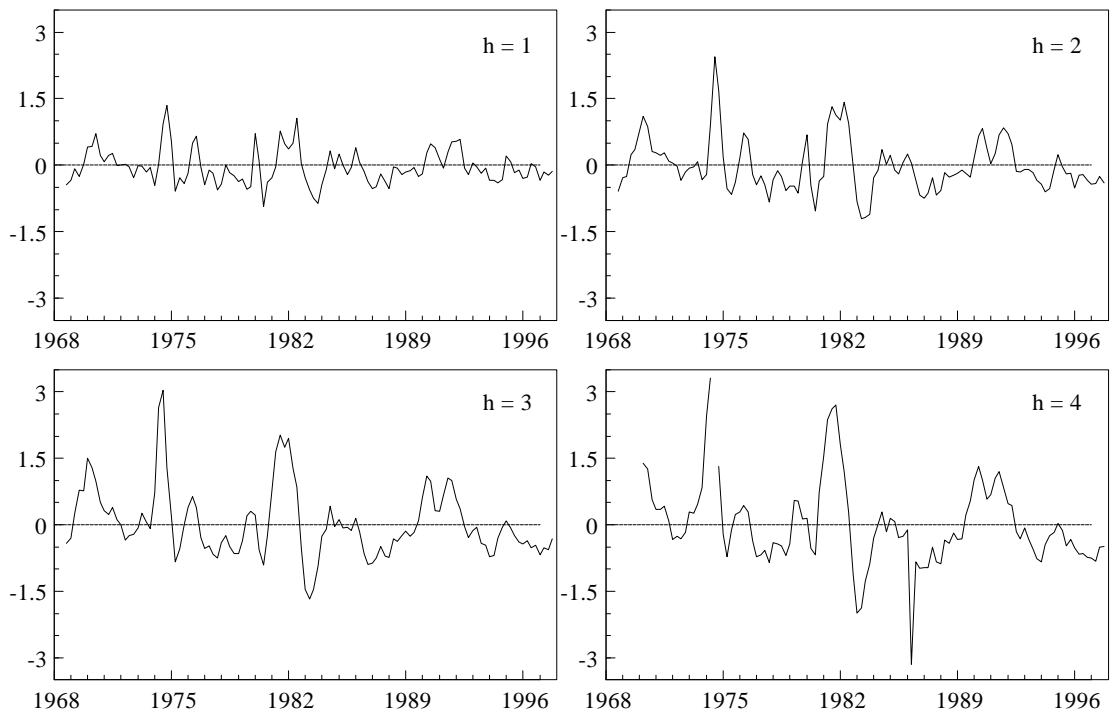


Figure 4. Consensus Forecast Errors: Unemployment Rate