

This item was submitted to Loughborough's Institutional Repository (<https://dspace.lboro.ac.uk/>) by the author and is made available under the following Creative Commons Licence conditions.



CC creative commons
COMMONS DEED

Attribution-NonCommercial-NoDerivs 2.5

You are free:

- to copy, distribute, display, and perform the work

Under the following conditions:

BY: **Attribution.** You must attribute the work in the manner specified by the author or licensor.

Noncommercial. You may not use this work for commercial purposes.

No Derivative Works. You may not alter, transform, or build upon this work.

- For any reuse or distribution, you must make clear to others the license terms of this work.
- Any of these conditions can be waived if you get permission from the copyright holder.

Your fair use and other rights are in no way affected by the above.

This is a human-readable summary of the [Legal Code \(the full license\)](#).

[Disclaimer](#) 

For the full text of this licence, please go to:
<http://creativecommons.org/licenses/by-nc-nd/2.5/>

Computational Study of Jetlet Structures in Perforate Silencers

C. D. Pokora* and G. J. Page†

Loughborough University, Leicestershire, United Kingdom.

Reynolds Averaged Navier Stokes allow for the steady state solutions while Large eddy simulation is a useful tool for predicting the spatial and temporal behavior of flow structures generated by complex geometries. However, many predictions suffer from poor grid resolution and initial conditions resulting in poor development of the initial jet shear layer and consequent incorrect prediction of critical flow behaviour. In this work, two 1mm thick perforate plate geometries of 23% and 40% porosity with 2mm diameter holes at an overall pressure ratio of 1.45 have been investigated. Results presented in this paper show the initial jetlet and fully merged jet flow-field to be sensitive to the porosity and the presence of partial holes around the circumference of the plate. The increase in porosity reduces the available entrainment flow, and increases the local jetlet interaction and resultant turbulence levels. This interaction fundamentally changes the flow structure from coherent vortex rings (found at low porosity) to a helical structure. The 2^{nd} and 4^{th} order spatio-temporal correlation R_{ij} and $R_{ij,kl}$ are presented as evidence of the associated impact on acoustic source modeling.

I. Introduction

Orifice plates and fluid throttle screens are common devices in climate control systems of aircraft,¹ as well as in process plant piping systems,² and can be used as pulsation suppression devices for reciprocating compressor and pressure reducing devices for gas services. It is known that the restriction of orifices can cause high level tonal noise in certain conditions and induce severe vibrations under high pressure ratio. The mechanisms and scaling laws for noise radiated from subsonic airflow through single and multiholed orifice plates have been studied experimentally.³ Such geometries can be categorised as dissipative flow silencers and are used to control noise within duct type flows due to their broadband attenuation characteristics. An example of this can be seen in the design of car silencers.⁴ Work by Itsuro et al² showed that the noise level for a multi perforated plate is lower than that of a single hole orifice in high pressure ratio conditions, whilst the flow rate of a multi perforated plate is larger than that of a single hole orifice.

Within this study, the mentality is to view the perforated plate as multiple orifices, each producing a separate jet ('jetlet'). It is therefore pertinent to consider single jet knowledge and associated issues. Reynolds Averaged CFD solution provide turbulence statistics, while Large Eddy Simulation (LES) are able to predict spatio-temporal behavior of turbulence. In LES, a subgrid-scale (sgs) model is used to account for the unresolved scales of motion in the flow. On a sufficiently fine grid, the subgrid-scale model has no significant effect on the evolution of the shear layer flow.⁵ However for high Reynolds number flows such a high-fidelity simulation is not currently feasible and it has been shown that modifications to the sgs to reduce the filter width results in significant changes to the evolution of the initial flow-field.⁶ Initialisation of a flow simulation at the inlet to the domain requires the specification of an inlet condition that provides the correct representation of the fundamental characteristic of the flows. Past research superimposed noise onto the inlet condition in order to promote the onset of turbulence in the flow.^{7,8} The current noise study does not suffer from any of these problems as the inlet geometry (straight pipe) and short nozzle length (perforate plate thickness) generates the correct turbulence and boundary layer development itself, removing the requirement to specify an inlet condition with accurate turbulent statistics.

*Research Associate, Dept. Aeronautical and Automotive Eng., AIAA Member

†Senior Lecturer, Dept. Aeronautical and Automotive Eng., AIAA Member.

The aim of this work is to perform computational simulations to provide an assessment of the fluid mechanics and potential porosity effects within multiple perforate geometries. This requires the collection of fundamental data on the performance of perforates, the flow structures, and their temporal development. Note that the flow within perforate environment designs is extremely complex and highly geometry specific and as a consequence the test programme has been restricted to a fundamental flow study using both steady RANS and unsteady LES.

II. Methodology

Meshes employed within this study are unstructured and mixed element and use a compressible, density-based Reynolds Averaged Navier-Stokes solver. The unstructured nature allows great flexibility in grid generation in order to handle complex geometry of industrial interest. The drawback is that, compared to a block-structured methodology, there is an overhead in computer memory and run-time, and unstructured spatial discretisation schemes are difficult to extend to more than second order accuracy.

The discretisation has been improved so as to avoid excessive dissipation of resolved eddies, and subgrid scale models incorporated. The important features are summarised below.

A. Governing Equations

Employing Cartesian tensor notation and the conservative variables $(\rho, \rho u_i, E)$, the governing time dependent equations in terms of spatially filtered, Favre-averaged compressible N-S equations can be expressed as

$$\frac{\partial}{\partial t} \int_{\Gamma} Q dV + \int_{\partial\Gamma} F(Q) \cdot n dS + \int_{\partial\Gamma} G(Q) \cdot n dS = 0, \quad (1)$$

where,

$$Q = \begin{bmatrix} \bar{\rho} \\ \bar{\rho}\tilde{u} \\ \bar{\rho}\tilde{v} \\ \bar{\rho}\tilde{w} \\ \tilde{E} \end{bmatrix}, \quad F(Q) \cdot n = \begin{bmatrix} \bar{\rho}\tilde{U}_n \\ \bar{\rho}\tilde{U}_n\tilde{u} + \hat{n}_x\bar{p} \\ \bar{\rho}\tilde{U}_n\tilde{v} + \hat{n}_y\bar{p} \\ \bar{\rho}\tilde{U}_n\tilde{w} + \hat{n}_z\bar{p} \\ \tilde{U}_n(\tilde{E} + \bar{p}) \end{bmatrix},$$

and $G(Q)$ contains viscous and conduction flux terms. The finite volume discretization provides an implicit filter for the large eddies and $\bar{\cdot}$ denotes unweighted filtered variables and $\tilde{\cdot}$ density weighted filtered variables. The spatial filter size is computed at every node from the control volume surrounding the node. The finite volumes are created from the median-dual of the original unstructured mesh which may contain tetrahedra, hexahedra, pyramids and prisms.

B. Discretisation

The fluxes through the median dual control volume faces are accumulated by looping over all the edges connecting the nodes. For an edge ij that connects nodes i and j , the flux is computed using a second-order accurate scheme of Moinier[?]

$$F_{ij} = \frac{1}{2} \left[F(Q_i) + F(Q_j) - \text{smoothing} \right], \quad (2)$$

The smoothing term is defined as

$$\text{smoothing} = |A_{ij}| \varepsilon (L_j^{lp}(Q) - L_i^{lp}(Q)), \quad (3)$$

where L^{lp} is the pseudo-Laplacian and

$$|A_{ij}| = \partial F / \partial Q \quad (4)$$

For LES it is essential that the smoothing term should be kept as small as possible so as to avoid unphysical dissipation of the resolved eddies. Temporal discretisation uses a standard third order accurate, three-stage Runge-Kutta algorithm.

C. The $k - \epsilon$ model

The Reynolds-averaged Navier-Stokes (RANS) equations require the turbulent Reynolds stresses $\overline{\rho u'_i u'_j}$ to be modelled. In the current work turbulence closure is achieved using the standard $k - \epsilon$ model, where turbulent viscosity is given by

$$\mu_t = \rho C_\mu \frac{k^2}{\epsilon} \quad (5)$$

which requires two additional modelled transport equations to be solved for turbulent kinetic energy and dissipation rate are:

$$\frac{\partial(\rho k)}{\partial t} + \frac{\partial}{\partial x_j} (\rho u_j k) = \frac{\partial}{\partial x_j} \left(\left(\mu + \frac{\mu_t}{\sigma_k} \right) \frac{\partial k}{\partial x_j} \right) + P_k - \rho \epsilon \quad (6)$$

$$\frac{\partial(\rho \epsilon)}{\partial t} + \frac{\partial}{\partial x_j} (\rho u_j \epsilon) = \frac{\partial}{\partial x_j} \left(\left(\mu + \frac{\mu_t}{\sigma_\epsilon} \right) \frac{\partial \epsilon}{\partial x_j} \right) + \frac{\epsilon}{k} (C_{\epsilon 1} P_k - C_{\epsilon 2} \rho \epsilon) \quad (7)$$

where the production of turbulence kinetic energy (P_k) is given by:

$$P_k = -\overline{\rho u'_i u'_j} \left(\frac{\partial \bar{u}_i}{\partial x_j} \right) \quad (8)$$

D. Sub Grid Scale Model

The standard Smagorinsky SGS model⁹ defines the subgrid scale viscosity as

$$\mu_{sgs} = \rho l_{smag}^2 \sqrt{2 S_{ij} S_{ij}}, \quad (9)$$

where the Smagorinsky length scale is,

$$l_{smag} = C_s \Delta \quad (10)$$

the strain rate is,

$$S_{ij} = \frac{1}{2} \left(\frac{\partial u_i}{\partial x_j} + \frac{\partial u_j}{\partial x_i} \right), \quad (11)$$

the filter width Δ is determined from the cube root of the control volume and C_s is a model constant.

A typical hexahedral mesh used for engineering calculations resolves the gradients in the boundary layer by decreasing spacing normal to the wall. This results in moderate to high aspect ratios close to the wall. The consequence is that the filter width stays relatively large and excessively high values of μ_{sgs} are found close to the wall. A ‘purist’ approach to LES would suggest that element aspect ratios should be significantly reduced to be closer to unity - but in practical terms the large increase in number of elements would render the calculation impractical.

In the inner region of the Baldwin-Lomax or Cebeci-Smith mixing length RANS model, the turbulent viscosity takes a similar form to the sub-grid scale viscosity of the Smagorinsky model

$$(\mu_t)_i = \bar{\rho} l_{bl}^2 |\bar{\omega}| \quad (12)$$

where the mixing length is in this case

$$l_{bl} = \kappa y [1 - \exp(-\frac{y^+}{A^+})] \quad (13)$$

Since the Smagorinsky SGS model only accounts for the modelled part of the total stress, this should be smaller than the Reynolds stress predicted by the mixing length model. Hence, we have a way of restricting the excessive length scale in the Smagorinsky model.

$$l_{smag} = \min(C_s \Delta, \kappa y) \quad (14)$$

This can be interpreted as using a RANS model near the wall, and is similar to the Detached Eddy Simulation (DES) approach in that we are defining a length scale as the minimum of the RANS model length scale and a SGS length scale based upon the local element size. Unlike DES, which aims to use the RANS model for the whole of the boundary layer, the objective here is to use the RANS model only in the inner region of the boundary layer in order to improve the prediction of the wall shear stress.

E. Second- and Fourth-Order Correlations

The usual Reynolds decomposition is adopted to separate time-mean (statistically stationary) and fluctuating components of the instantaneous velocity field:

$$u'_i(\vec{x}, t) = u_i(\vec{x}, t) - U_i(\vec{x}) \quad (15)$$

Single point Reynolds stresses are defined as usual, e.g. for the rms of the axial turbulent normal stress

$$u_1^{rms}(\vec{x}, t) = \sqrt{u'_1(\vec{x}, t)^2} \quad (16)$$

In addition, for spatio-temporal characteristics of the turbulence, the definitions adopted for the normalised 2^{nd} and 4^{th} order two-point, two-time correlations are as follows, let A,B,C identify particular spatial / temporal co-ordinate pairs:

$$\begin{aligned} A &= (\vec{x}, t) \\ B &= (\vec{x} + \vec{\eta}, t) \\ C &= (\vec{x} + \vec{\eta}, t + \tau) \end{aligned}$$

Then:

$$R_{ij}(\vec{x}, \vec{\eta}, \tau) = \frac{\overline{u'_i(A) u'_j(C)}}{\sqrt{\overline{u'_i(A)^2}} \sqrt{\overline{u'_j(B)^2}}} \quad (17)$$

$$R_{ij,kl}(\vec{x}, \vec{\eta}, \tau) = \frac{\overline{u'_i(A) u'_j(A) u'_k(C) u'_l(C)} - \left(\overline{u'_i(A) u'_j(A)}\right) \left(\overline{u'_k(B) u'_l(B)}\right)}{\left(\overline{u'_i(A)^4}\right)^{\frac{1}{4}} \left(\overline{u'_j(A)^4}\right)^{\frac{1}{4}} \left(\overline{u'_k(B)^4}\right)^{\frac{1}{4}} \left(\overline{u'_l(B)^4}\right)^{\frac{1}{4}} - \sqrt{\overline{u'_i(A)^2}} \sqrt{\overline{u'_j(A)^2}} \sqrt{\overline{u'_k(B)^2}} \sqrt{\overline{u'_l(B)^2}}} \quad (18)$$

Simpler correlations of interest may be obtained by selecting specific values of $\vec{\eta}$ and τ . For example, the auto-correlation function is obtained by setting $\vec{\eta} = 0$ and the spatial correlation function is obtained by setting $\tau = 0$.

Integral length scales may be extracted from these correlations, e.g at 2^{nd} order level :-

$$L_{ij}^k(\vec{x}) = \int_0^\infty R_{ij}(\vec{x}, \eta_k, 0) d\eta_k \quad (19)$$

where k indicates the component of the separation vector along which the integration is carried out. For example, the streamwise integral scale is evaluated as L_{11}^1 and the transverse integral scale as L_{11}^2 . Note that in practice these integral scales are evaluated up to the first zero crossing of the correlation function (as in Fleury et al¹⁰).

III. Computational Grids

Two distinct test configurations have been designed to investigate and characterise the main fluid mechanics and aeroacoustic mechanisms associated with perforate noise.

The first test configuration includes two geometries with varying porosity perforates mounted at the end of a 47.5mm internal diameter pipe. The two perforates have open areas of 23% and 40% with 2mm diameter holes (D_j) resulting in ≈ 130 and ≈ 226 holes respectively. These models have designations of [R23-2] and [R40-2] and have been used for RANS calculations to investigate the basic jet flowfield (jet mixing and shock associated) from isolated perforates.

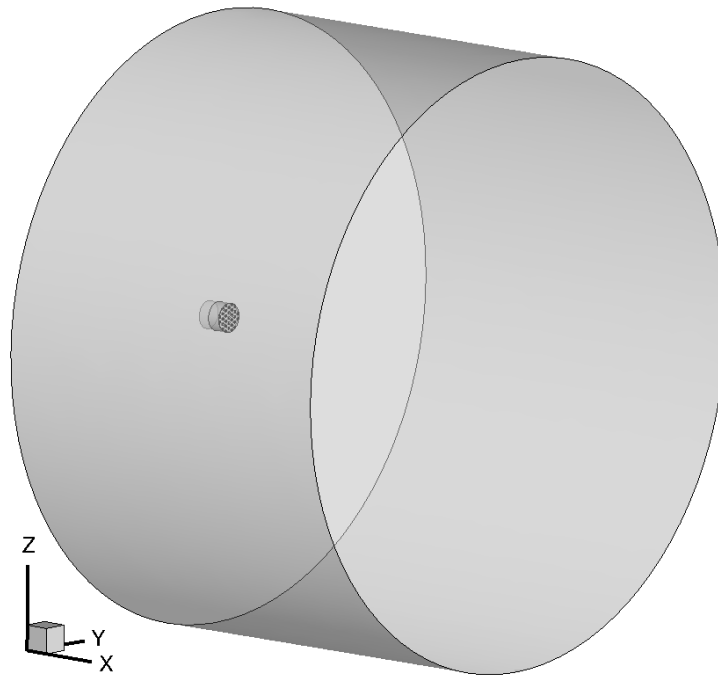
The second test configuration uses the same porosity perforates but with a reduced plate diameter of 21mm (D_p). This reduces the number of holes to ≈ 25 and ≈ 44 for the 23% and 40% porosity perforates respectively. The reduced number of holes reduces the computational cost therefore allowing for LES calculations to be performed. These models have designations of [L23-2] and [L40-2] and have been conducted for a single overall pressure ratio of 1.45 resulting in pipe Reynolds number $Re_{pipe} \approx 97,000$, jetlet Reynolds number $Re_{jetlet} \approx 32,000$ and equivalent open area jet Reynolds number $Re_{jet(L23-2)} \approx 77,000$ and $Re_{jet(L40-2)} \approx 102,000$.

The commercial grid generator ‘Centaur’ was used in this study to mesh the geometry illustrated in Figure 1a-c. The hole pattern and spacing for the two porosities can be seen in Figure 1b and c. The presence of partial holes around the circumference can be identified and their potential to effect the flow development noted. Figure 2a-d illustrates the LES grid for the L40-2 geometry for the XZ plane at $Y=0$ mm and the YZ plane 1mm downstream of the perforate plate exit. Prism layers were used adjacent to the walls of the orifices, with tetrahedral elements elsewhere. The tetrahedra were increased in size away from the areas of interest. Source terms were used to control grid spacing where the jetlet shear layers were expected (Figure 2b) and the overall region of the merged jet plume (Figure 2a). As the CFD solver uses a medium dual approach, the number of unknowns is equal to the number of nodes in the mesh.

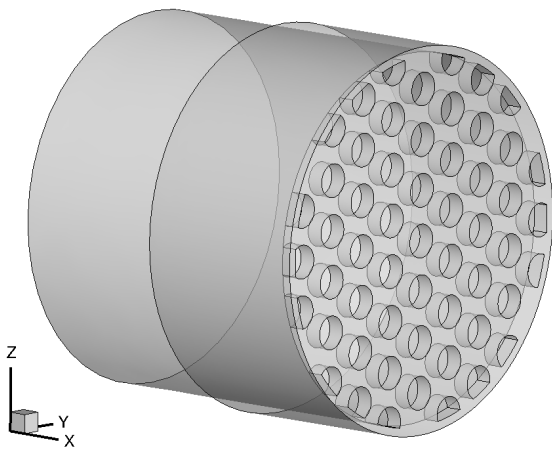
Grid resolution is critical to obtaining a high level of resolved turbulence reducing the errors incurred through large SGS model contributions. A good indicator of the quality of the computational mesh is the ratio of mean sub grid scale modelled viscosity to laminar viscosity μ_t/μ . This has been used to aid mesh refinement. Table 1 shows the final mesh sizes for the test configurations and perforate porosity. Note, each hole resolution is identical between perforate porosities (144,000 nodes per hole). Figure 3 shows contour plots of this ratio for the final mesh on the XZ plane at $Y=0$ mm. This provides evidence that the grid refinement (prism layers and node clustering) has increased the resolved turbulence around the holes and downstream until $x/D_j = 2$ producing values of between 1-3. The grid stretching employed further downstream can be seen to match the growth of the turbulent structures helping to maintain a ratio value < 3 until $x/D_j = 10$. This covers the main area of interest for this study. Further downstream the mesh becomes coarser to reduce computational cost, and as a consequence the viscosity ratio increase as axial distance increases to a peak value of 35.

| Solver | Definition | Porosity | Hole count | Element count |
|--------|------------|----------|----------------|----------------|
| RANS | R23-2 | 23% | 105.45 Million | 283.39 Million |
| RANS | R40-2 | 40% | 106.04 Million | 286.32 Million |
| LES | L23-2 | 23% | 34.88 Million | 126.37 Million |
| LES | L40-2 | 40% | 37.37 Million | 140.59 Million |

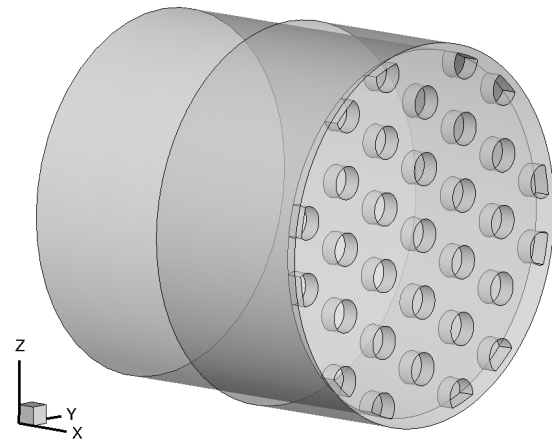
Table 1: RANS test configuration grid sizes



(a) XZ Plane

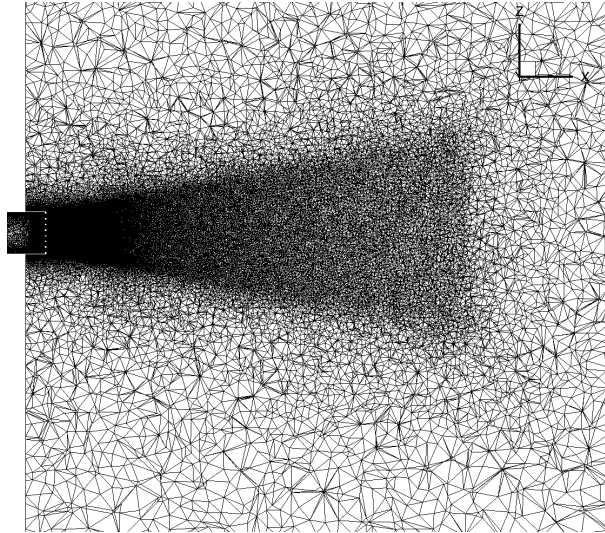


(b) XZ Plane (detailed single hole)

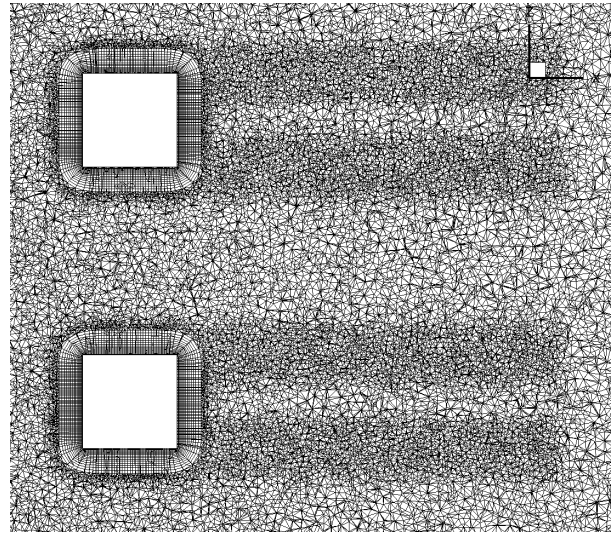


(c) ZY Plane

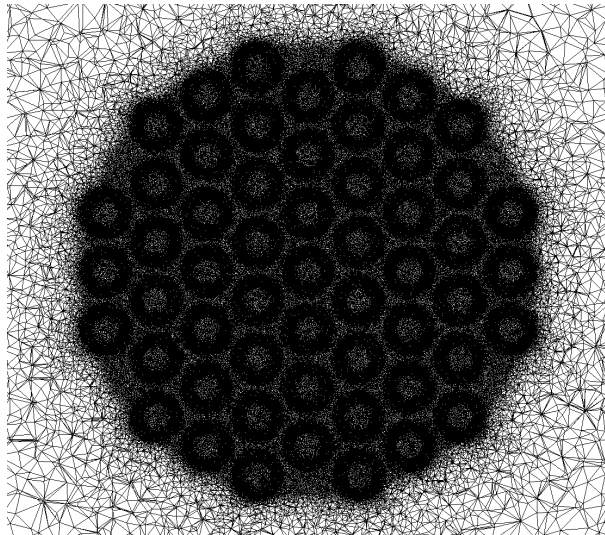
Figure 1: Illustrations of the 23% and 40% geometry for the LES simulations (RANS geometries are comparable)



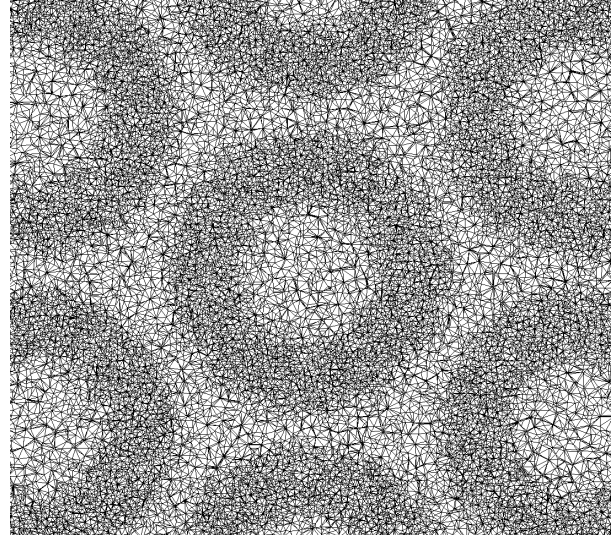
(a) XZ Plane



(b) XZ Plane (detailed single hole)



(c) ZY Plane



(d) ZY Plane (detailed single hole)

Figure 2: Illustrations of LES L40-2 grid (L23-2 comparable)

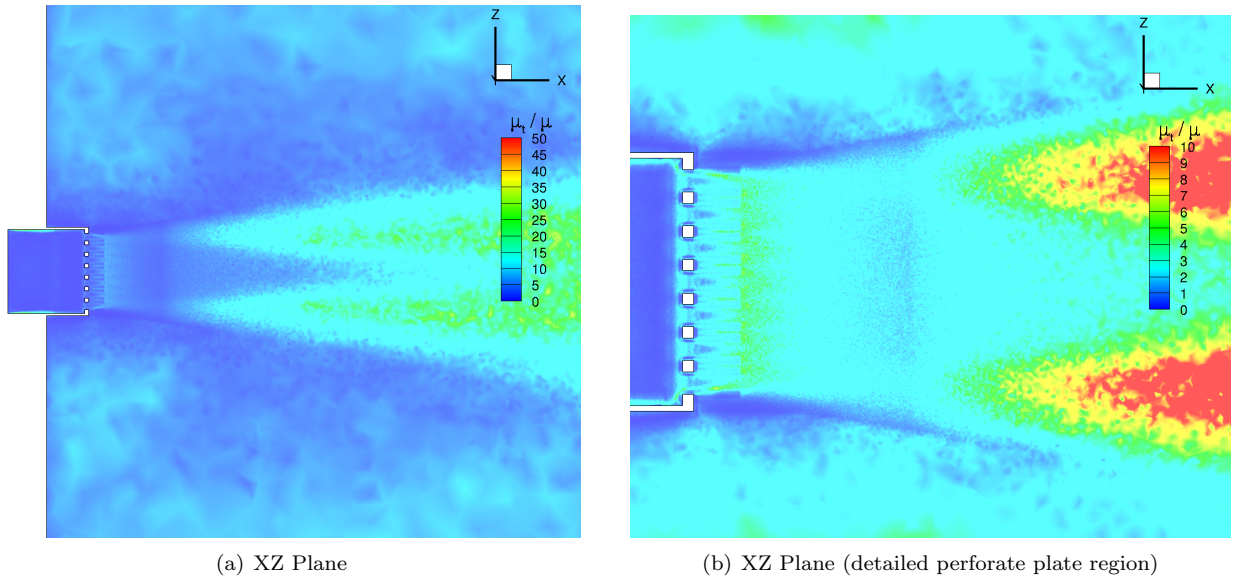


Figure 3: Ratio of SGS to laminar viscosity μ_t/μ at $Y = 0$ mm

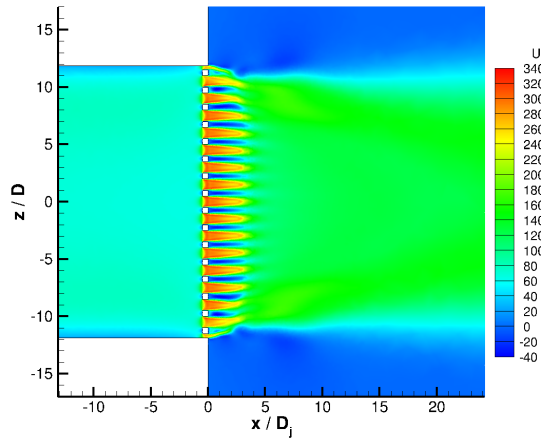
IV. Results

A. Flow Statistics

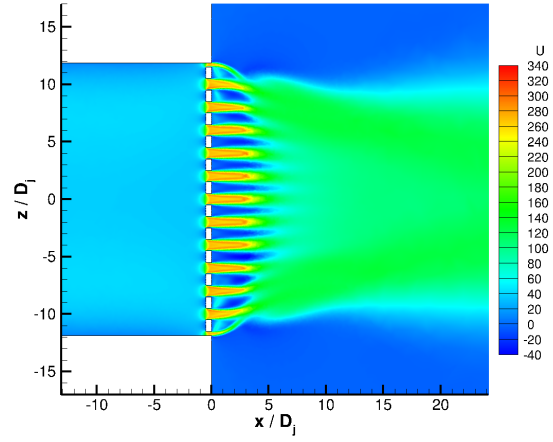
The flow simulated on each geometry is performed with a single nominal pressure ratio of 1.45 for both RANS and LES calculations. Of particular interest in the simulations is the effect of perforate porosity for a given inflow pipe diameter (D_p). This inevitably reduces the number of holes present within the low porosity cases, and changes the number and influence of the partial holes on the outer circumference of the plate. This will be assessed in the following section.

Results from the RANS simulations for both R23-2 and R40-2 geometries are illustrated in Figure 4a-f and 5a-f in the form of XY and YZ planes at various axial locations of axial velocity and tke contours. Figure 4a-f provides evidence that the porosity of the plate changes the potential core lengths of the jetlets from each of the holes. With the increase in porosity comes a reduction in the area between neighboring holes and hence the gap between neighboring jetlets shear layers is smaller than a single holes annular shear layer diameter. As the shear layers spread, they interact with the neighboring shear layers before the closure of their own potential core. This causing increased turbulence (Figure 4e and f) and reduction in potential core length. Figure 4a and b illustrate the difference in the initial development of the fully merged jet plume. The increased mixing present on the outer most side of the outer jetlets, together with the partial holes (identified earlier) are seen to effect the jetlet trajectory and lead to an asymmetry in the fully merged jet plume. Figures 5a-f show how important the inclusion of the outer partial holes are in predicting the distortion they have on the overall mixed jet plume. Comparison between the distorted mixed jet plume to typically circular jet plumes must also play a part in the associated far-field noise. Given the number of permutations of outer circumferential hole geometries, this paper now focuses on the central hole, whose behavior is solely driven by the proximity of neighboring whole jetlets.

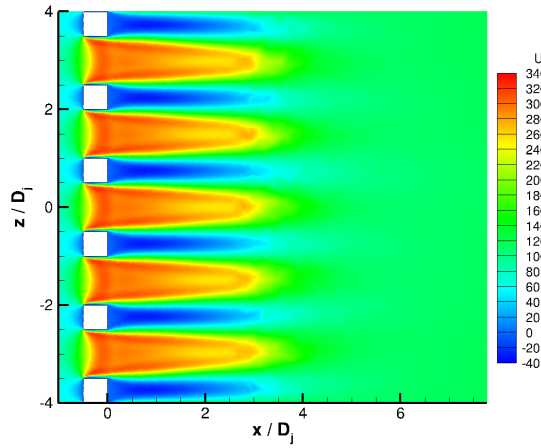
Comparison between the central jetlet of both the RANS and LES geometries for both porosities is shown in Figures 6 - 8. Figure 6 shows the increased potential core length commonly seen with RANS simulations. R40-2 can also be seen to posses an acceleration in centreline velocity at $x/D_j = 20$. It is believed this increase in local velocity is due to higher energy fluid moving from the outlet region of the overall jet plume once the jetlet have become fully mixed. This is seen to its largest extent on the high porosity case due to the increased jetlet to jetlet interaction (illustrated in Figure 5e and f). The LES predictions are generally shorter than the RANS, however, in this case there is a distinct lack of potential core region in both LES simulations. The L40-2 jet axial velocity decays rapidly while the L23-2 decays at a slower rate to begin



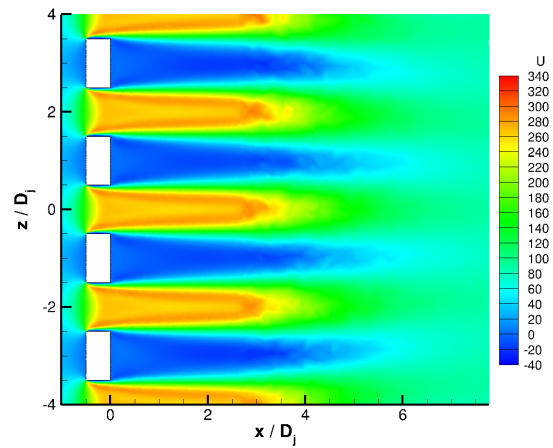
(a) R40-2 - Axial velocity for whole plate



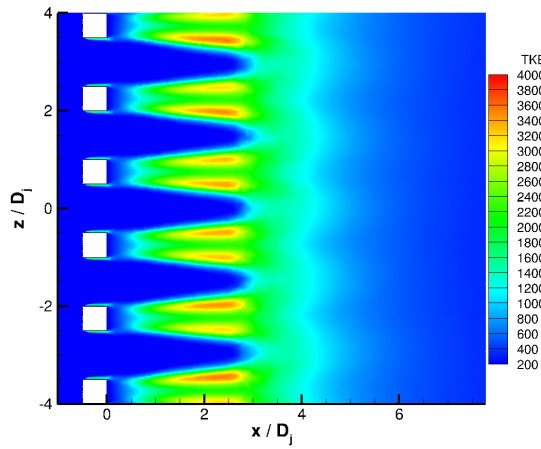
(b) R23-2 - Axial velocity for whole plate



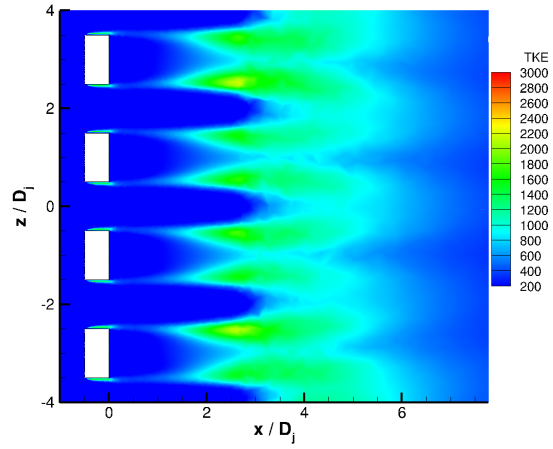
(c) R40-2 - Axial velocity for central holes



(d) R23-2 - Axial velocity for central holes

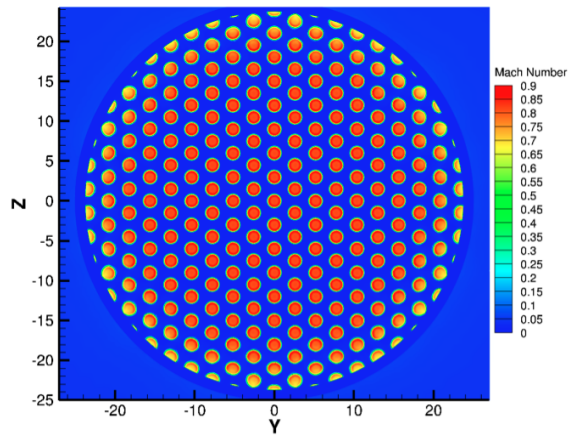


(e) R40-2 - tke for central holes

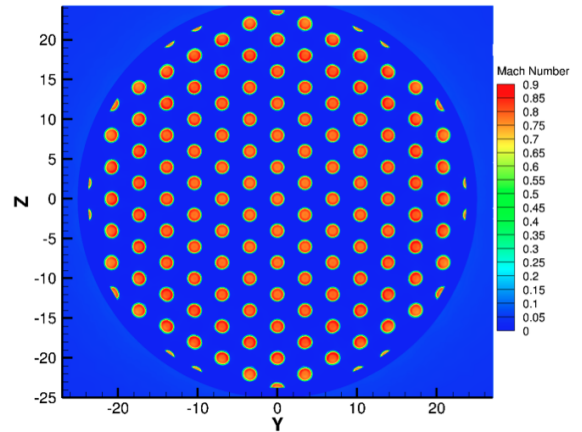


(f) R40-2 - tke for central holes

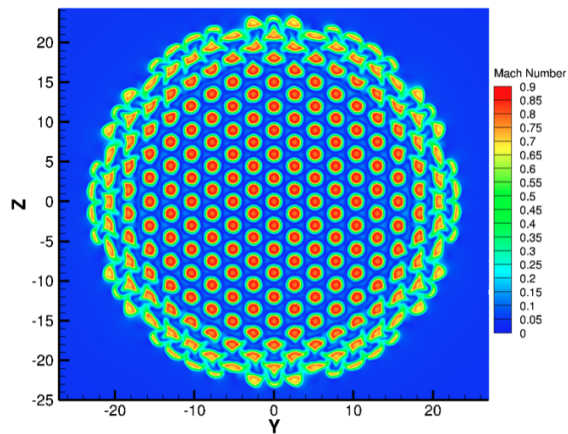
Figure 4: XY planes of axial velocity at various axial locations for 40% and 23% perforates



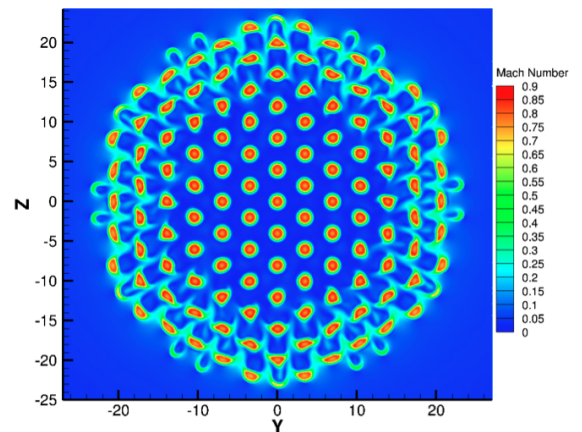
(a) R40-2, $x=0.001\text{mm}$



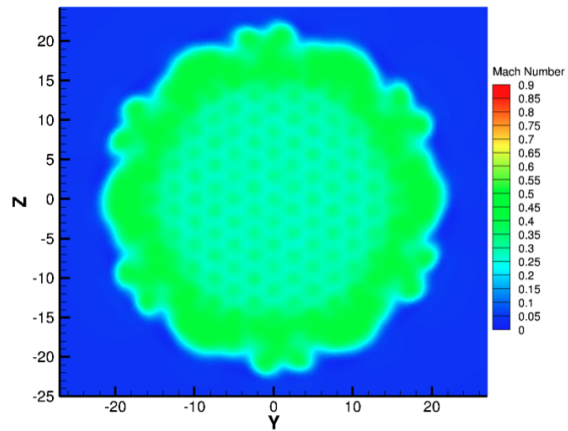
(b) R23-2, $x=0.001\text{mm}$



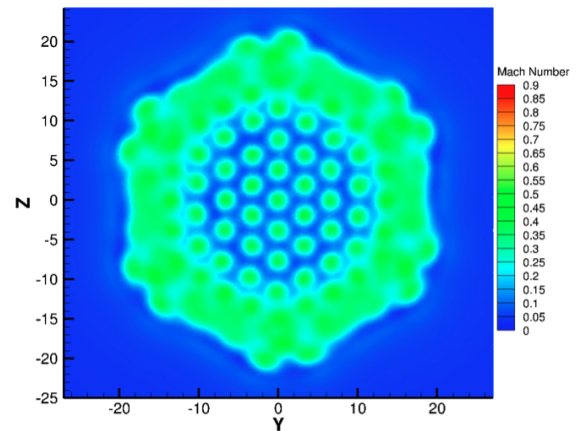
(c) R40-2, $x=2.0\text{mm}$



(d) R23-23, $x=2.0\text{mm}$



(e) R40-2, $x=10.0\text{mm}$



(f) R23-2, $x=10.0\text{mm}$

Figure 5: YZ planes of axial velocity at various axial locations for 40% and 23% perforates

with, but by $x/D_j = 3$ decays at the same rate as the L40-2 simulation. The L40-2 and L23-2 jetlet becomes fully mixed with its neighbouring jets at $x/D_j = 4$ and $x/D_j = 6$ respectively. The jetlet mixed region, produces an overall jet plume which possesses the typical plateau (steady velocity) region before the annular shear layer around the overall jet plume closes the potential core at approximately $x/D_j = 55$ or $x/D_p = 4.8$ and $x/D_j = 40$ or $x/D_p = 3.5$ for both L40-2 and L23-2 respectively. Note, the longer overall jet plateau for the 40% porosity plate is due to the larger effective overall jet diameter (based on open area diameter).

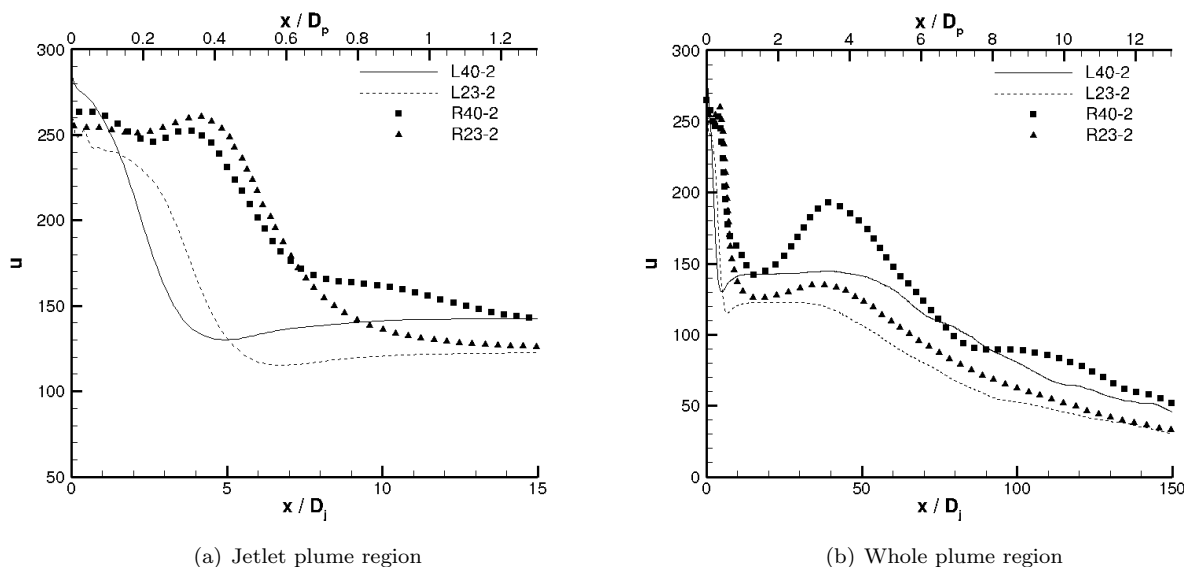


Figure 6: Comparison between RANS and LES axial profiles of axial mean velocity for both L40-2 and L23-2 predictions along the jet centreline

Figures 7 and 8 show profiles of the r.m.s of the velocity fluctuations. Downstream of $x/D_j = 10$ the two simulations are comparable, the larger scale motions which have developed within the shear layer have overcome the earlier difference in plate porosity. When examining the r.m.s upstream of $x/D_j = 10$ both the centreline and lipline profiles show a distinct two peak profile for the L23-2 simulations, whilst the L40-2 simulations shows a single peak. This single peak, although equal in magnitude to the twin peaks along the centreline, is higher along the lipline.

Figure 9a-b shows the radial profiles of axial mean and r.m.s velocity of the central jets. This shows the jetlet shear layers, due to the high porosity, interact with the neighbouring shear layers before the closure of its potential core. The L40-2 simulation has a negative velocity (recirculation zone) downstream of the plate. This results in higher r.m.s levels within the region of lee between the neighboring jetlet in comparison to the L23-2 simulation.

B. Flow Structures

A major advantage of LES is the ability to obtain fully time-dependent solutions allowing investigation into the fluid dynamics and presence of coherent structures in more detail. Instantaneous axial velocity and pressure contour plots for the whole jet plume and the central jetlet region are shown in Figures 10a-f for both L40-2 and L23-2 simulations. There is a noticeable difference for the two configurations in the shape and distribution of axial velocity through the hole and its dissipation into the overall jet plume. The regions of low pressure in Figure 10e and f signify the presence of shear layer vortical structures. As the jetlet emerges from the plate in the 23% case, the vortical structures are aligned across the shear layer and aligned with the adjacent jetlets (as will be seen later, there are toroidal (ring) structures). For the 40% case the low pressure indicates the vortical structures are staggered across the jetlet and staggered in respect to the adjacent jetlets. (Representative visualisations of the vortical structures in the flow are shown in Figures 11 and 12 for both L23-2 and L40-2 simulations).

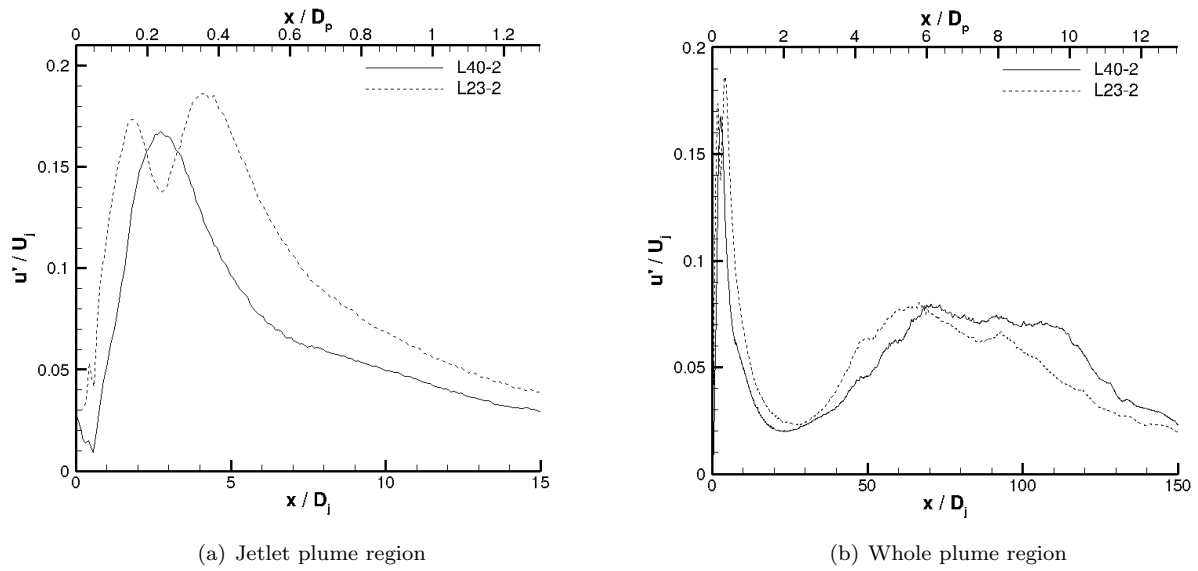


Figure 7: Axial profiles of axial r.m.s velocity for both L40-2 and L23-2 predictions along the jet centreline

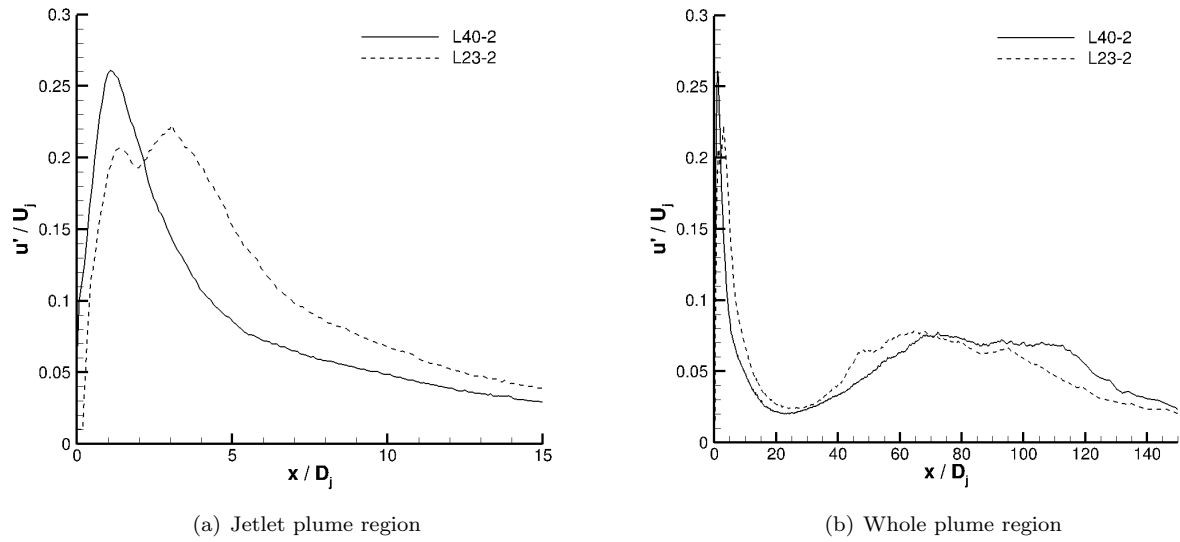


Figure 8: Axial profiles of axial r.m.s velocity for both L40-2 and L23-2 predictions along the central hole lipline

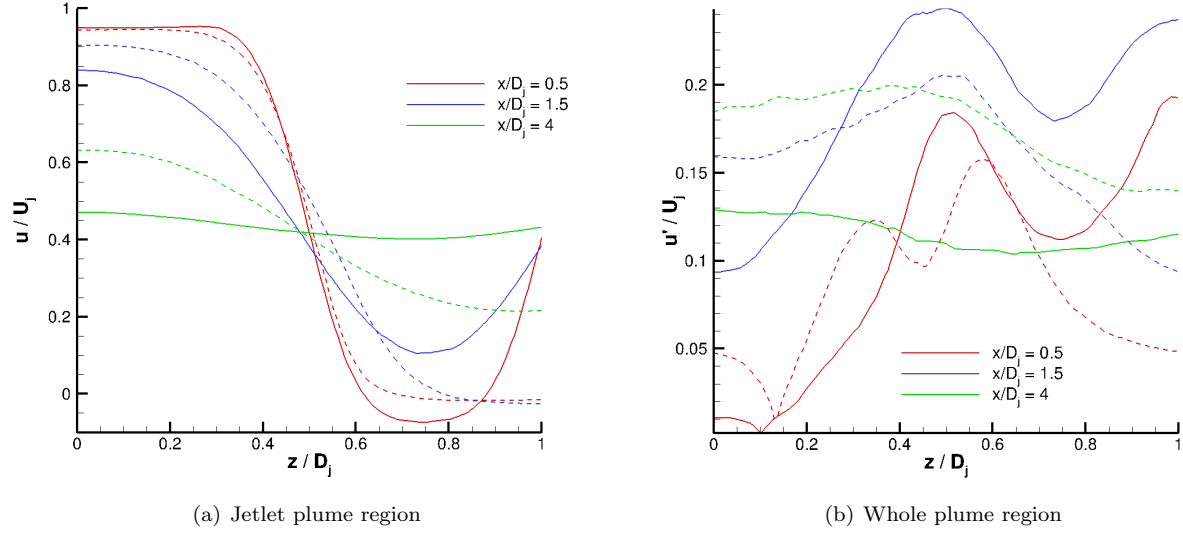
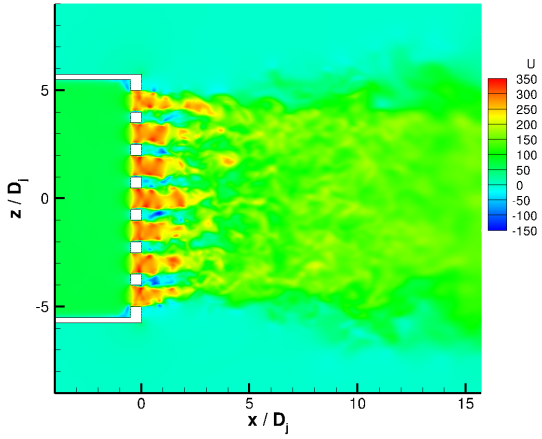


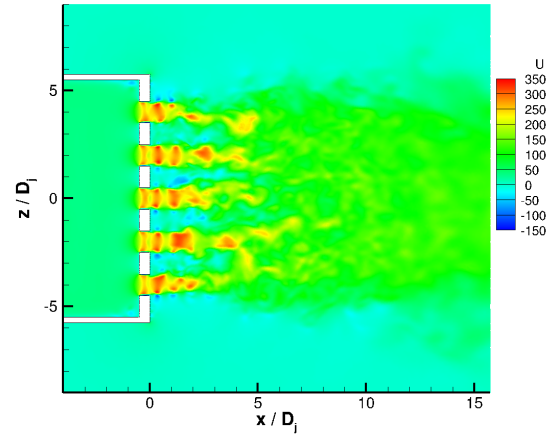
Figure 9: Radial profiles of axial mean and r.m.s velocity for both L40-2 and L23-2 predictions (solid lines = L40-2, dashed lines = L23-2)

Visualisation using an isosurface of vorticity magnitude (Figure 11b and 12b) show vortex ring structures typical of a jet with laminar initial condition⁷ and with some similarity to the vortex train produced by a synthetic jet. In the 40% porosity perforate case, the reduced distance between the holes leads to increased interaction between the jetlets resulting in a dominant helical vortex structure and additional small scale turbulence. These structures also increase the turbulence levels and reduces the potential core length of the jetlets.

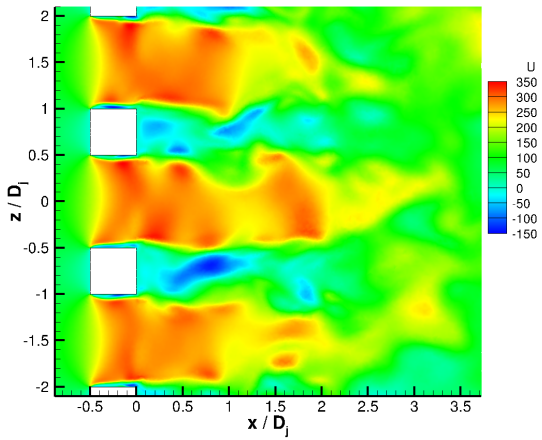
The different vortex structures is likely to be due to the ambient air entrainment process of the jetlets. Each jetlet requires a certain amount of mass to be entrained to be able to expand like an individual, undisturbed one. In this case, the air would be delivered from the ambient environment but due to the small spacing between two adjacent holes, insufficient fluid is available to feed the jetlets. This results in a low pressure region - although not constant in time. Regarding the temporal development of the inner hole region, it can be seen that a separation bubble emerges due to the sharp inlet edge causing a reduction in the effective flow area. Due to the lack of entrainment air in the region of lee downstream of the plate, the separation bubble is sucked out of the hole and into this low-speed lee region to provide the required mass flow. The instantaneous mass compensation leads to a breakdown of the driving force for the suction of the separation bubble. Hence a new one is formed and the mechanism starts again. This process happens for all holes at the same time. Therefore, an equilibrium is achieved between suction of the separation bubble to provide enough fluid in the lee regions and the instantaneous entrainment of this air. For the L40-2 case, the close proximity of neighboring jetlets results in the formation of an entrainment region roughly opposite of it located suction region which circulates around the centerline of each jet. Superimposed with the axial velocity of the jetlets, this motion leads to the occurrence of the helical vortex structures.



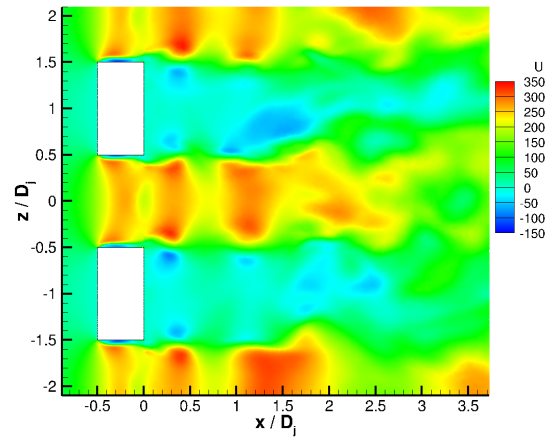
(a) L40 - Axial Velocity Contours



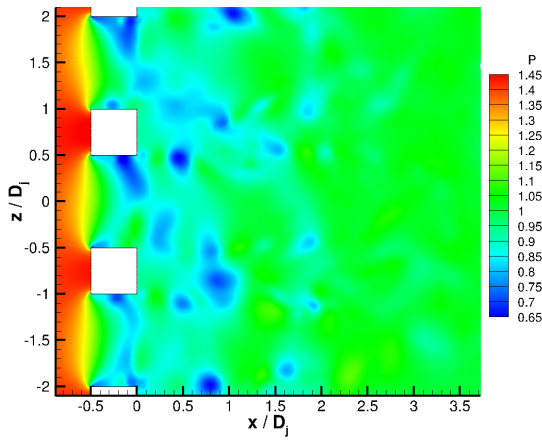
(b) L23 - Axial Velocity Contours



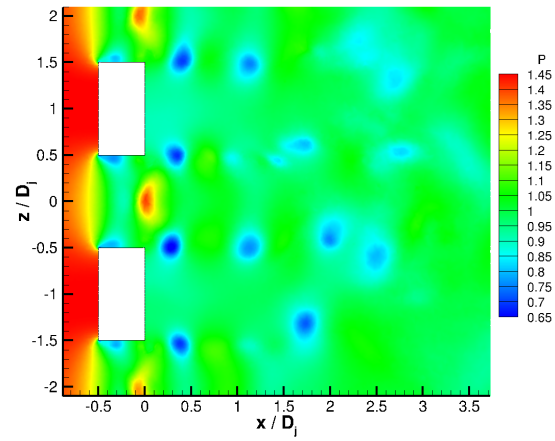
(c) L40 - Axial Velocity Contours



(d) L23 - Axial Velocity Contours

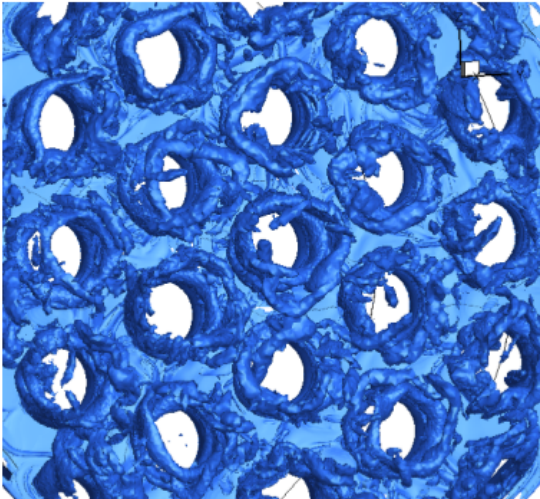


(e) L40 - Pressure Contours

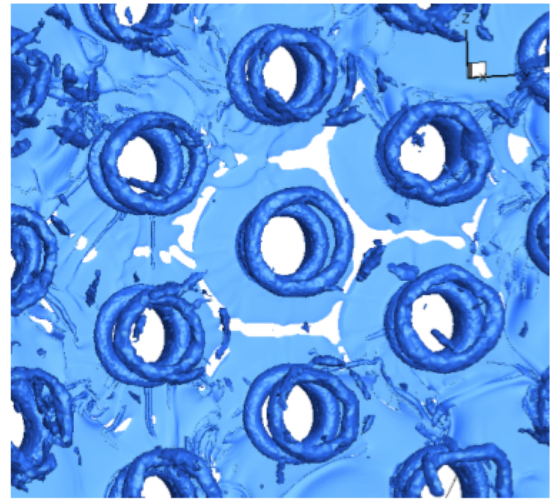


(f) L23 - Pressure Contours

Figure 10: XZ planes of Mach number at $Y=0$ for T40 and T23 perforates

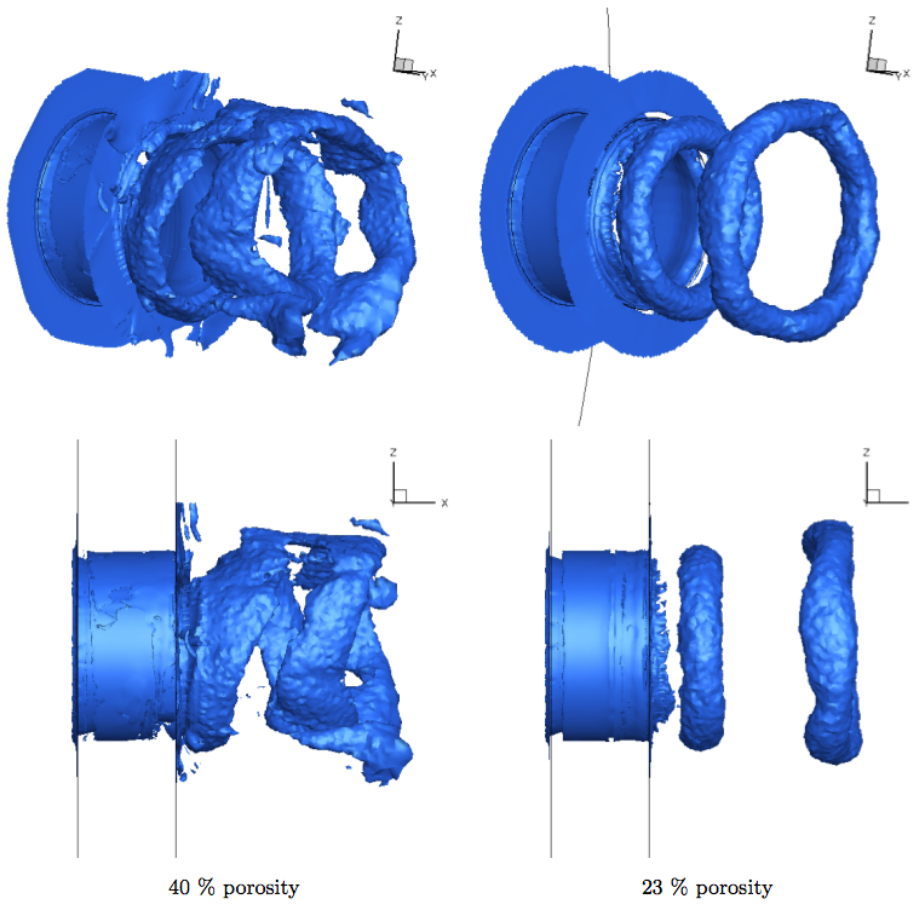


(a) 40% porosity



(b) 23% porosity

Figure 11: Iso-surfaces of $\Omega_{rel} = 2.7\%$ at the central plate area for both geometries



40 % porosity

23 % porosity

Figure 12: Iso-surfaces of a relative vorticity magnitude of $\Omega_{rel} = 3.6\%$ at the most central hole for both geometries seen from two different perspectives

C. Correlations

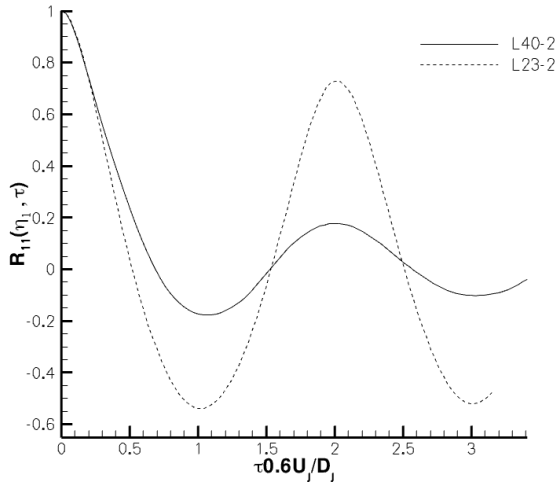
In order to understand the acoustic sources the two LES solutions have been post-processed to extract the 2-point 2-time correlations for both 2nd and 4th order statistics, as defined in equations 17 and 18. The correlations are evaluated at a point in the middle of the shear layer ($r/D_j = 0.5$). The auto-correlation function is obtained by setting $\vec{\eta} = 0$ and gives rise to the local integral timescale. Figures 13 illustrates the auto-correlation at $x/D_j = 1.5$ and $x/D_j = 4$. The second peak value in both 2nd and 4th correlations for both L40-2 and L23-2 represents the passing of a correlated structure (i.e the next vortex ring). The peaks occur at approximately the same temporal decay indicating that the frequency is similar in both cases, as would be expected as this is generally a driven by a geometric length and characteristic velocity. As expected the secondary peak magnitude is larger for the L23-2 case due to the highly coherent nature of multiple vortex rings, in comparison to a helical structure interlaced with high frequency structures. Figure 13c illustrates the same secondary peak correlations at $\tau 0.6U_j/D_j = 2$ whilst also bringing to attention an earlier smaller peak only present in the L23-2 prediction. This tertiary peak is associated with the secondary streamwise vortices which straddle the two rolling vortex rings and produce a region of mildly correlated axial velocity fluctuations. The lack of secondary peaks for both simulations at $x/D_j = 4$ illustrates that by this axial location both structures have undergone transition into a fully turbulent flow.

Figure 14 and 15 shows the 2nd and 4th order correlations for the axial velocity fluctuation (R_{11}) and for varying axial separation and delay time. For all separation distances (η) a noticeable secondary peak exists for all velocity components (Axial - R_{11} , Radial - R_{22} , and Circumferential - R_{33}). The decay can be seen to be slower for the L23-2 simulations associated with the low level of diffusion in vortex rings present at $x/D_j = 1.5$. The evolution of the shear layer development with axial distance results in an increase in decay rate for L23-2 in comparison to L40-2 by $x/D_j = 4$. This is associated by the rapid transition to fully-developed turbulence downstream of vortex ring breakdown.⁷

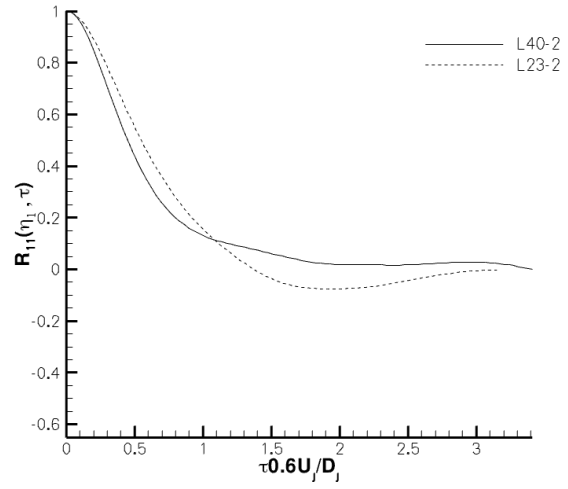
To address the question of relative amplitudes of correlation components, the peak magnitude (numerator) of all 6 2nd order and 21 4th order independent correlation components for zero time and space separations normalised by the axial component peak magnitude at $x/D_j = 1.5$, $z/D_j = 0.5$ are examined. Table 2 shows a comparison of 2nd order relative correlation amplitudes between the PIV results from Pokora et al,⁷ CTA results from Harper-Bourne⁷ and the two LES simulations in this study. The agreement between the LES simulations is good for all terms except R_{33} where the helical nature of the flow structure produced by the L40-2 geometry increase the circumferential term. The non-isotropic 2D coherent structures can be clearly seen in both results in the difference between R_{22} and R_{33} .

| | R_{11} | R_{12} | R_{13} | R_{22} | R_{23} | R_{33} |
|-------------------------------------|----------|----------|----------|----------|----------|----------|
| Pokora ⁷ PIV data | 1 | 0.30 | -0.04 | 0.42 | 0.03 | 0.67 |
| Harper-Bourne ⁷ CTA data | 1 | - | - | 0.61 | - | 0.80 |
| L23-2 LES data | 1 | 0.47 | -0.03 | 1.01 | 0.04 | 0.34 |
| L40-2 LES data | 1 | 0.48 | -0.04 | 0.92 | -0.02 | 0.83 |

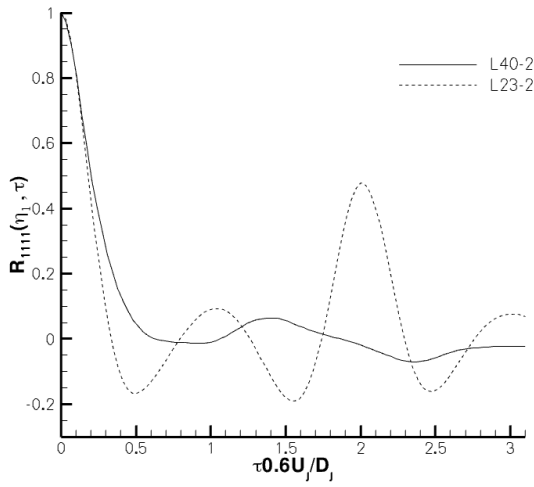
Table 2: Comparison of 2nd order correlation component amplitudes as a ratio of R_{11} between average PIV results and CTA results at $x/D_j = 1.5$, $z/D_j = 0.5$)



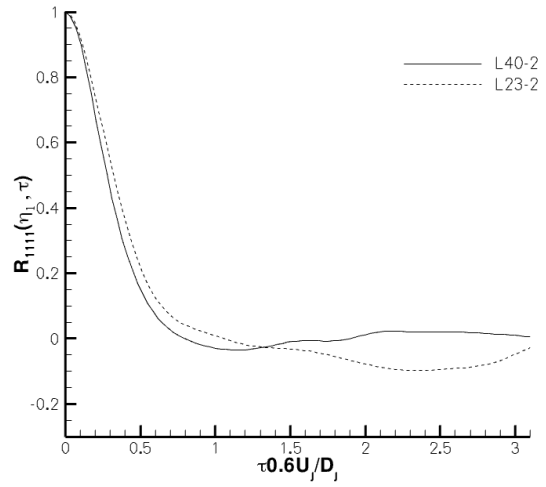
(a) $x/D_j = 1.5$



(b) $x/D_j = 4$

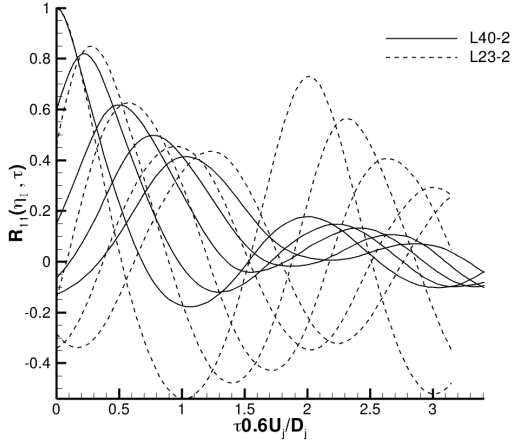


(c) $x/D_j = 1.5$

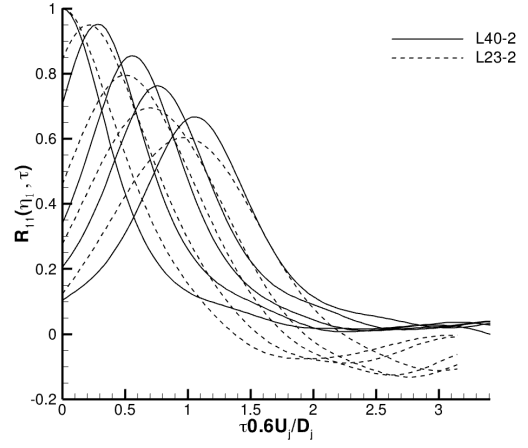


(d) $x/D_j = 4$

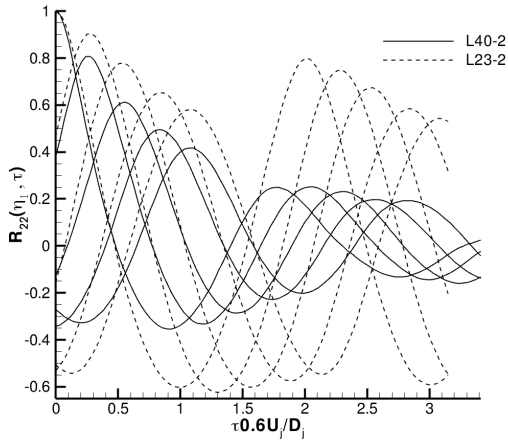
Figure 13: Comparison between L40-2 and L23-2 for 2nd and 4th order auto-correlations of axial velocity fluctuations ($\eta = 0$)



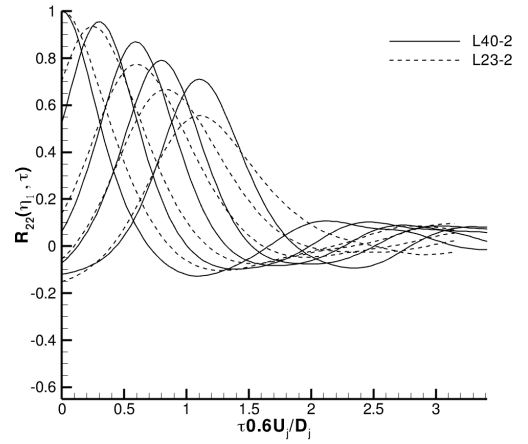
(a) $x/D_j = 1.5$



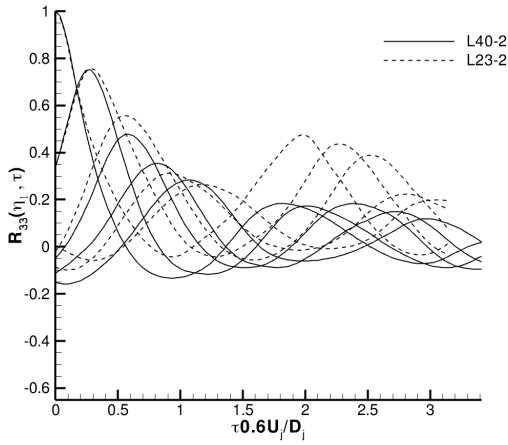
(b) $x/D_j = 4$



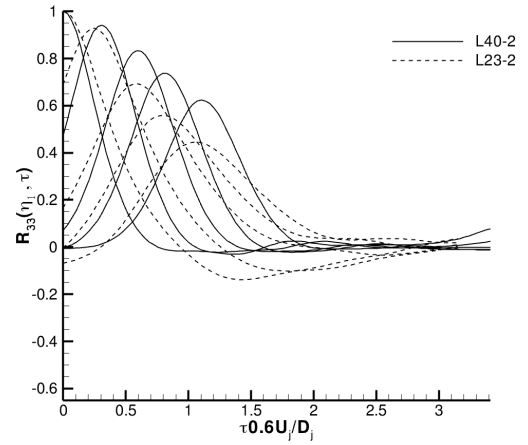
(c) $x/D_j = 1.5$



(d) $x/D_j = 4$



(e) $x/D_j = 1.5$



(f) $x/D_j = 4$

Figure 14: Comparison between L40-2 and L23-2 for 2^{nd} order 2-point 2-time correlations of axial velocity fluctuations with axial separations (each line represents $\eta_1/D_j = 0.2$)

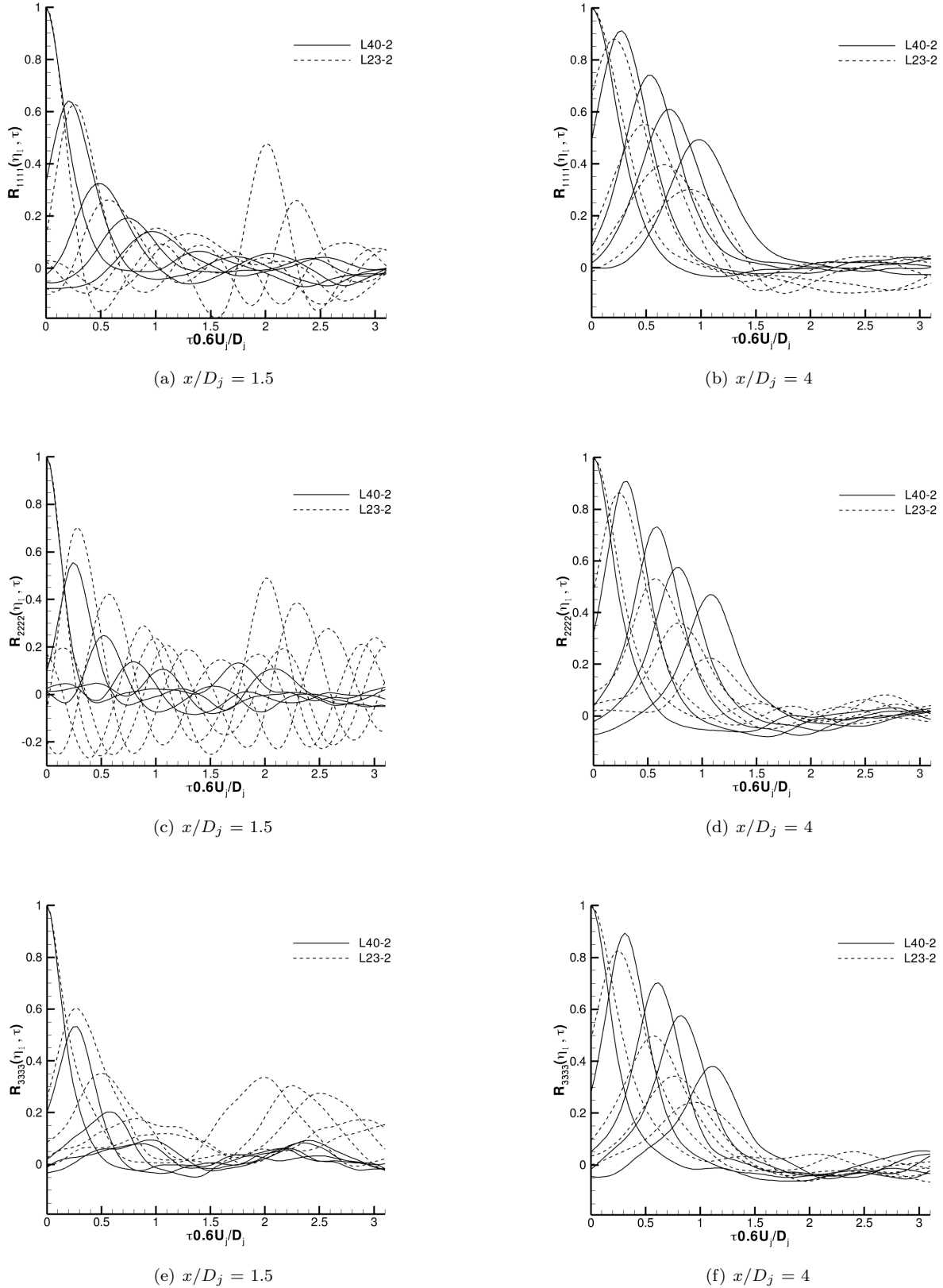


Figure 15: Comparison between L40-2 and L23-2 for 4th order 2-point 2-time correlations of axial velocity fluctuations with axial separations (each line represents $\eta_1/D_j = 0.2$)

V. Conclusion

The study has shown that the RANS and LES are able to compute steady and unsteady flow in multiple hole perforate plates. This has allowed for edge effects due to the partial holes to be shown to have significant influence on the shape and mixing of the merged jet plume.

The individual perforate jetlets have been shown to be strongly influenced by neighboring jetlets and different flow structures have been observed due to the changes in plate porosity. Changing from a vortex ring structure at low porosity to a helical structure as the porosity increases.

The 2nd and 4th order spatio-temporal correlation R_{ij} and $R_{ij,kl}$ confirm acoustic source changes due to the difference in coherent structures. Away from the early jetlet development 2nd and 4th order correlations are similar to those found in an isolated free single jet. The correlations presented here are available as suggested validation data for further acoustic source modeling.

VI. Acknowledgment

The work has been performed under SYMPHONY ‘SYstem Manufacturing and Product design tHrough cOmponent Noise technologY’, TP11/HVM/6/I/AB201K.

This project was co-funded by the Technology Strategy Board’s Collaborative Research and Development programme, following an open competition. The Technology Strategy Board is an executive body established by the Government to drive innovation. It promotes and invests in research, development and the exploitation of science, technology and new ideas for the benefit of business - increasing sustainable economic growth in the UK and improving quality of life.

Computational time on HECToR has been funded by ‘Supercomputing Resources and Support for the UK Applied Aerodynamics Consortium 2’ EPSRC EP/F005954/1.

Preliminary LES predictions were carried out by Christoph Schäfer as part of his Diploma studies at TU Dresden, supported through ERASMUS.

References

- ¹Boock, K. and Viertel, M., “Low-Noise Volume Flow Rate Throttling of Fluid-Carrying Pipes,” *Patent application, AIRBUS DEUTSCHLAND GMBH*, July 2007.
- ²Itsuro, H. Teruo, H. and Hiroshi., “Flow Induced Noise at Orifice Plate in Piping Systems,” *Nippon Kikai Gakkai Kankyo Kogaku Sogo Shinpojiumu Koen Ronbunshu*, Vol 14, pp26-29, 2004
- ³Demetz, F. C. Matis, M. F. Langley, R. S. and Wilson, J. L., “Noise radiation from subsonic air flow through single and multiholed orifice plates,” *Interim Report Naval Ship Research and Development Center, Bethesda, MD. Acoustics Dept.*, Feb 1979.
- ⁴Peat, K. S., “A numerical decoupling analysis of perforated pipe silencer elements,” *Journal of Sound and Vibration*, 123(2), 199-212, 1988.
- ⁵McMullan, W. A., “Numerical experiments on spatially developing mixing layers using Large Eddy Simulation,” *Ph. D. Thesis, University of Leicester*, 2005.
- ⁶Andersson, N., Eriksson, L-E. and Davidson, L., “Effects of inow conditions and subgrid model on LES of turbulent jets,” No. 2005-2925, AIAA 2005.
- ⁷Wu, W., Page, G. J., and McGuirk, J. J., “An approach to improve high frequency noise prediction in LES of jets,” *12th AIAA/CEAS Aeroacoustics Conference, Cambridge, Massachusetts No.2006-2442*, May 2006,.
- ⁸Freund, J. B., “Noise sources in a low-Reynolds number turbulent jet at Mach 0.9,” *Journal of Fluid Mechanics*. Vol 438, pp 277-305.
- ⁹Smagorinsky, J., “General circulation experiments with the primitive equations,” *Monthly Weather Review*, Vol. **91**, pp 99-164. 1963
- ¹⁰Fleury, V., Bailly, C., Juve, D., Michard, M., and Jondeau, E., “Space-time correlations in two subsonic jets using dual-PIV measurements,” *13th AIAA/CEAS Aeroacoustic Conference AIAA Paper 2007-3615*, 2007.