

Institute of Mechanical Engineers, Part A: Journal of Power and Energy, special issue.

## **Time-Step Analysis of the DECC 2050 Calculator Pathways**

John Barton<sup>a\*</sup>, Eoghan McKenna<sup>a,b</sup>, Murray Thomson<sup>a</sup>

<sup>a</sup> Centre for Renewable Energy Systems Technology, School of Mechanical, Electrical and Manufacturing Engineering, Loughborough University, Loughborough. LE11 3TU. UK

<sup>b</sup> Environmental Change Institute, School of Geography and the Environment, University of Oxford, OX1 3QY

\* Corresponding author

John Barton

CREST (Centre for Renewable Energy Systems Technology)

Wolfson School of Mechanical, Electrical & Manufacturing Engineering

Holywell Park

Loughborough University

Loughborough

LE11 3TU

United Kingdom

Tel: +44 (0) 1509 635350

E-mail: [j.p.barton@lboro.ac.uk](mailto:j.p.barton@lboro.ac.uk)

Copies of FESA analysing each of the DECC 2050 Calculator pathways, and a copy of the Calculator, version 3.4.6 will be stored on the Loughborough University Repository, <https://dspace.lboro.ac.uk/dspace-jspui/>

DOI: 10.17028/rd.lboro.4742905

## **Abstract**

An hour-by-hour time-step analysis is presented of United Kingdom (UK) electricity grid balancing in low-carbon energy pathways from the DECC 2050 Calculator. The detailed modelling uses the Future Energy Scenario Assessment (FESA) tool, which uses real weather data and real electricity demand data from year 2001 to model future supply and demand profiles, suitably adjusted to reflect technology uptakes. The paper describes the linking of the DECC 2050 Calculator with FESA and many of the detailed considerations within the modelling. The calculation of net demand (total demand less intermittent renewables and inflexible portions of other electricity generation) reveals the magnitude and duration of peaks and troughs throughout the year and this allows quantification of required peaking plant, energy storage, demand response or a combination of these. The results indicate that the grid balancing challenge is much greater than is apparent from the DECC 2050 Calculator, with significant excess power from renewables and less flexible generators needing to be exported or curtailed, and, at other times of the year, a significant amount of additional conventional generation being required. FESA also indicates significantly lower capacity factors for despatchable generators than indicated in the DECC 2050 Calculator. The results underline the value of energy storage and flexible demand, particularly in the high-renewables pathways, but also that much of that storage and flexibility needs to be available for days or even weeks rather than hours.

**Keywords:** low carbon transition pathways; scenarios; renewable energy; demand side management; energy storage; grid balancing; energy security; time step modelling; model integration

# 1 Introduction

Intermittent renewable sources of electricity generation and inflexible nuclear power present a challenge to electricity systems in their balancing of supply with demand. As the UK moves to reduce greenhouse gas emissions in line with its obligations (1,2), these low-carbon generators are likely to be increasingly used, and so the challenge of grid balancing will increase.

This paper describes the linking of the Future Energy Scenario Assessment (FESA) model with the DECC 2050 Calculator (3) and the use of the combined models to investigate the challenges of balancing the DECC 2050 scenario pathways on an hourly basis throughout a full year. Both these models have been used within the Transition Pathways project, (4) and their linking draws on the methodology of (5) by recognising the areas of overlap and complementarity of different models.

The DECC 2050 Calculator has been widely used to explore and visualise possible futures of UK energy supply and demand (3,6-8). Among its strengths are that it includes all significant uses of energy in the UK economy, it represents all significant sources of greenhouse-gas emissions and it estimates costs; it is also user-friendly and open-source leading to widespread use. Its outputs include quantification of the annual production and annual consumption of electricity and it is configured to ensure that these figures balance on an annual-energy basis. Of course in practice, the temporal availability of wind, solar and other renewables will not align with the temporal profile of demand, and whilst the DECC 2050 Calculator includes a general

representation of energy storage and peaking plant, the detailed quantification of these is beyond its scope.

Future Energy Scenario Assessment (FESA) is a UK grid-balancing model developed at Loughborough University and presented previously (6,7,9). Its strength is that it uses hourly data to represent a whole year of operation and so it can reveal the scale of the grid balancing challenge and provide quantification of required peaking plant, energy storage, demand response or the combination of these. It uses real weather data and real electricity demand data from year 2001 to model future supply and demand profiles, modelling the magnitude and duration of peaks and troughs in net demand (total demand less intermittent renewables and inflexible portions of other electricity generation).

The roles of despatchable generation, energy storage and demand shifting are investigated and presented against quantified indicators including curtailed (wasted) generation and unsatisfied demand. The resulting outputs also include electricity generated and used by each technology in each hour of the year. From these, the capacity factors (utilisation factors) of each form of controllable generation are calculated.

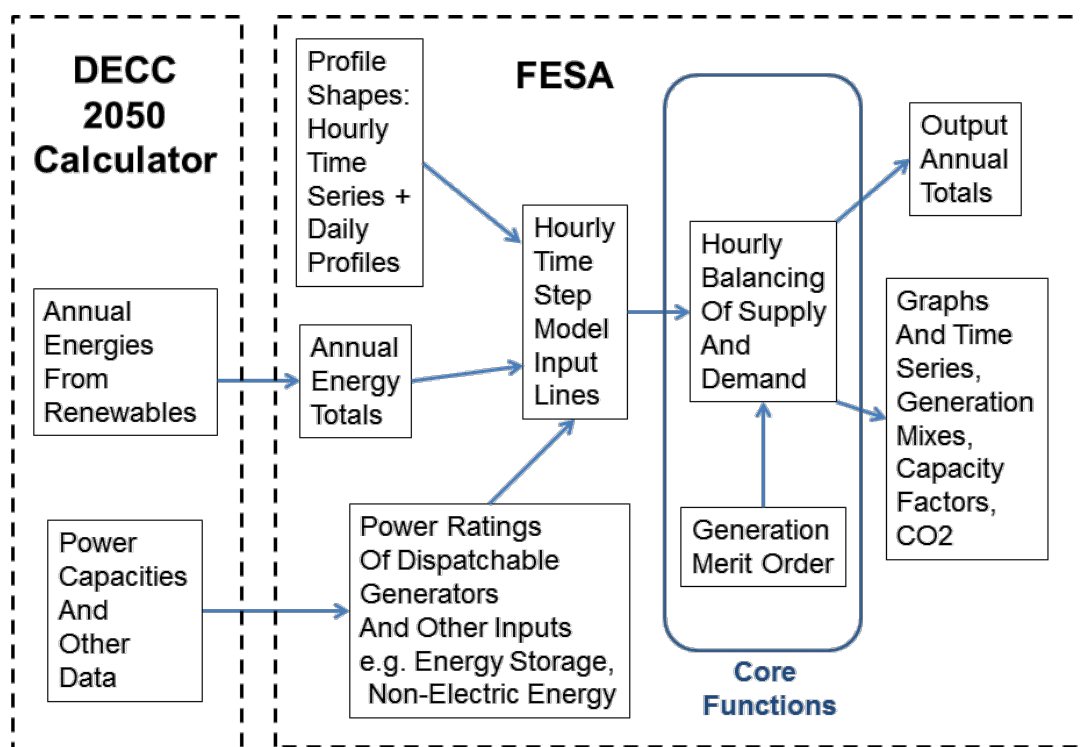
FESA models electricity demand in detail and non-electric energy use more simply, whereas the DECC 2050 Calculator models greenhouse gas (GHG) emissions and non-electric energy use in more detail.

Although data from year 2001 is now quite old, it was used because concurrent data from that year is available for electricity demand and all the forms of renewable

energy modelled, and to be consistent with previous papers published using FESA (6,7,9).

## 2 Modelling details and assumptions

Both models are written in Microsoft Excel and their linking allows a user to adjust inputs to the DECC 2050 Calculator, for example to consider a new scenario pathway, and for those modifications to automatically feed through to FESA and update its outputs. An overview of the data flows is shown in Figure 1 and is described in the following section.



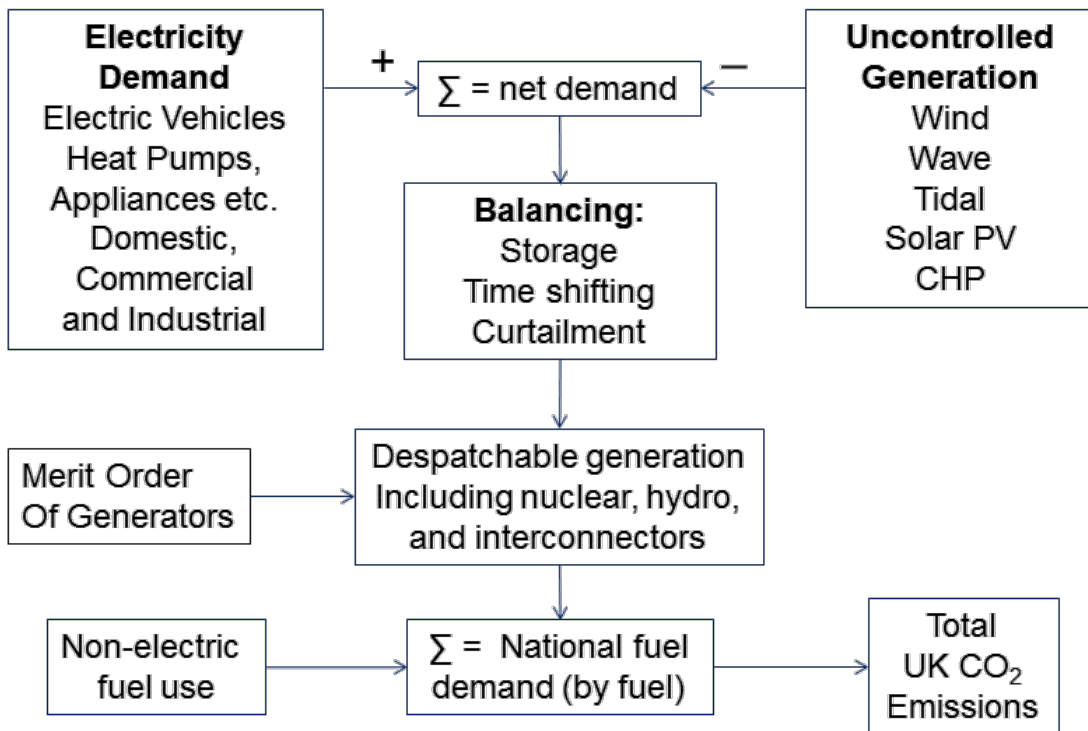
**Figure 1. Overview of data flows from the DECC 2050 Calculator and through FESA**

The annual energy production and consumption figures provided by the DECC 2050 Calculator are used as input data. FESA then applies hourly profiles and time series to these annual totals. An important feature of FESA is that, where appropriate, the hourly profiles are based on weather data from around the UK. Lists of the

“uncontrollable” components of electricity generation and demand are given in tables A.1 and A.2 of the appendix, together with the source of data for the time series or profiles.

In order to be consistent with the DECC 2050 Calculator, FESA is configured to model the UK as a whole, including Northern Ireland. This is equivalent to assuming that Northern Ireland is very strongly electrically connected to the GB grid, which is not the case today and is may well not be the case in 2050. Nonetheless, it is a useful simplification for the purposes of this paper, since it allows direct comparison back to the DECC 2050 Calculator. Furthermore, configuring FESA to use GB-only data would not provide any different insight or conclusions overall. FESA is a single-node model: it assumes unconstrained power flows throughout the UK.

The core functions of FESA are illustrated in Figure 2 and have been reported previously (6,7,9). The inflexible, variable and uncontrolled portions of electricity generation are subtracted from the total electricity demand, as illustrated in Figure 2, to give a net demand that must be met by flexible sources of power. FESA first considers meeting the net demand using energy storage and “controllable” demands such as electric vehicle charging, as described in Table 1. FESA then uses conventional, despatchable generation in merit order to achieve grid balancing.



**Figure 2. Overview of core functions of FESA model.**

## **2.1 Annual Total Quantities**

As far as possible, FESA takes all its inputs directly and automatically from the Excel version 3.4.6 of the DECC 2050 Calculator (10) and faithfully reproduces the annual total numbers. FESA has to use some assumptions to fill in gaps in the DECC data, and also make a few adjustments to be consistent with other input numbers. For example, domestic and commercial water heating demand are added together into a single number in FESA; and the annual average temperature rise due to climate change is calculated by averaging the expected temperatures in all four seasons in each year as given by the DECC 2050 Calculator.

The FESA inputs taken from the DECC 2050 Calculator are listed in appendix 4.

## **2.2 Application of Profiles to Annual Totals**

Each form of variable renewable electricity generation and each component of electricity demand follows its own weather-related or daily (non-weather related)

profile as described in appendices 1,2 and 3. In each case FESA applies the relevant profile to the annual total quantity given by the DECC Calculator. Consistency is confirmed within FESA by the annual summation of hourly values. For intermittent electricity generating technologies such as wind and solar PV, this summation is an annual total electrical energy, whereas for heat quantities, e.g. domestic space heat demand or CHP heat output, a total annual heat energy is confirmed. FESA also calculates the necessary installed capacity of each variable or inflexible generator to achieve the annual total, given the annual capacity factor of each form of generation. Generators falling into the category of 'uncontrolled generator' consist of: onshore wind, offshore wind, solar photovoltaics (PV), solar thermal water heating, domestic combined heat and power (CHP), commercial CHP, wave power, tidal stream and tidal barrage.

The time series of variable renewable energy sources were created using hourly weather records (11) but the time series of electricity demand was based on half-hourly electricity demand data from National Grid in the same year (12). Other profiles have to be estimated since their technology is not in widespread use, for example electric vehicle charging, heat pumps, and CHP.

### ***2.3 Heat Energy Demand***

Within electricity demand, FESA includes detail on heat-related energy use, with commercial heating and cooling energy use separated out from domestic energy use. Industrial uses of energy remain undifferentiated, being part of 'other electricity demand' which also includes domestic and commercial lighting and appliances. FESA concentrates on sectors with the best understood and greatest potential for demand-shifting (i.e. time-shifting of demand, not demand reduction).



Industrial CHP is present in both the FESA model, and the DECC 2050 calculator, but is not explicitly modelled in either. Both DECC and FESA's industrial electricity demand is net of this electricity, which is accounted as industrial self-generation. Both models account the fuel used in industrial CHP as part of industrial fuel use. Looking at other sources of data, industrial CHP provides a large amount of heat for low, medium and high-temperature industrial processes (13). The electricity is produced as a by-product and typically used entirely within the industrial site. The demand profiles of industrial CHP are not easily accessible, but are largely independent of weather-related factors such as external temperature and largely inflexible. Industrial CHP is therefore not presently adjustable or useful for grid balancing, and FESA was not significantly diminished by the lack of an explicit model of it.

In contrast, domestic and commercial CHP provides low temperature heat for space heating and hot water. The use of this CHP is dependent on external temperature and in theory is amenable to adjustment or time-shifting in conjunction with low-temperature heat stores. Profiles of domestic and commercial CHP are related to hot water demand and external temperature, and are better known. These sectors of CHP are therefore included in both FESA and the DECC 2050 Calculator.

In this study, FESA was run to faithfully reproduce the DECC 2050 Calculator example pathways, and therefore excluded the possibility of time-shifting domestic and commercial CHP. If time-shifting were included together with hot water storage, and if households can accommodate a hot water cylinder of 100 litres, cycling through a temperature range of 20°C to 80°C, the heat storage capacity will be 7kWh

per house. If half of the 40 million households in 2050 could accommodate a hot water cylinder, this would add 140GWh of thermal storage.

This thermal energy stored in hot water cylinders would translate into tens of GWh of flexible electricity supply (from CHP) and flexible demand (from heat pumps), which are comparable magnitude to either pumped hydro or electric vehicle charging, but not modelled by the DECC 2050 Calculator.

## ***2.4 Transport Energy Demand***

Battery electric vehicle charging was another sector of electricity demand that was modelled in detail. This sector includes both purely electric vehicles (EVs) and plug-in hybrid electric vehicles (PHEVs). In the absence of extensive data on when EVs and PHEVs are really charged, a charging profile was created for FESA. This was based on the times of day when cars are parked, but modified to avoid electricity use at the peak demand time of early evening, in accordance with projections of future policy to aid grid balancing (1,14-16). It was assumed that EV charging would take place primarily at night-time, for example in response to simple time-of-use tariffs.

FESA assumes both 'simple' and 'smart' demand shifting to aid grid balancing. Simple demand shifting means that the default profiles of demand are flatter or use more electricity at night and less during peak periods, as might result from time-of-use tariffs, for example the default profile of EV charging described above, which was used up to and including year 2015. Smart demand shifting is more flexible and is modelled as a form of energy storage, as described below in Section 2.5. Smart meters are assumed to be ubiquitous from 2020 onwards in accordance with government policy (17-20), and this is interpreted as including the use of flexible

demand, mainly electric vehicle charging, which was treated as a form of smart demand shifting from year 2020 onwards.

## ***2.5 Energy storage and time-shifting of demand***

The 'Electricity distribution, storage and balancing' section of the DECC 2050 Calculator is rather limited. FESA faithfully reproduces the flexible demand modelled in the DECC 2050 Calculator, which consists only of time-shifting of electric vehicle charging. The DECC 2050 Calculator balancing section also contains international interconnection, extra 'boostable' generating capacity and pumped storage, again, faithfully modelled by FESA. Whereas the DECC 2050 Calculator only considers peak demand and availability factors, FESA goes much further by considering the duration for which peak net demand persists, and also periods of electricity surplus.

Recognising that most forms of time-shifting flexible demand involve inbuilt energy storage, FESA models demand shifting as a form of energy storage. For simplicity, all types of storage and time-shifting are aggregated together into one large national energy store, and are assumed to operate over 24 hours only. The net demand in each hour is compared with a 24-hour moving average of net demand calculated 12 hours before the hour and 12 hours after the hour, including the hour itself. 24 hours was chosen as the averaging period and as the maximum working energy storage period because:

- (i) The natural variations in demand and in solar, wind and tidal generation include significant or dominant cycles on a daily or almost daily basis.
- (ii) The storage associated with time-shifting mechanisms available to the electricity system have a time constant appropriate to 24-hour storage.

Existing pumped hydro has an energy-to-power ratio of 9.3 hours and electric vehicles are designed to be charged up overnight, typically over a period of 7 hours.

Note that a store performing sinusoidal cycles of power and energy requires an energy-to-power ratio (time constant) equal to the storage period divided by  $\pi$  (3.14), so a period of 24 hours requires a store with a time constant of about 7.6 hours. FESA used the same power ratings as the DECC 2050 Calculator for its energy storage and flexible demand modelling, Table 1, but FESA then estimated the energy rating associated with each power rating.

Note that when the grid balancing measures are set to effort level 4 in the DECC 2050 Calculator, the power rating of pumped hydro is 20GW. Whereas the Calculator then assumes an energy rating of 400GWh, FESA assumes an energy rating of 186.7GWh, maintaining today's energy-to-power ratio of 9.3. These levels of power and energy are considered ambitious by some but achievable by Prof. David MacKay whose work contributed to the DECC 2050 Calculator (21) and by others who have studied the possibility of converting conventional hydro power into pumped hydro (22).

Also note that in FESA, pumped hydro is still used on a daily basis, maintaining a high utilisation factor, even at the highest level of deployment. The use of longer timescales of storage is a promising area of research for future work.

**Table 1. Energy storage and demand time shifting resources**

Scenario	Storage / Time-shifting resource	Energy Capacity, GWh	Power rating, GW	Time Constant, Hours
Year 2010	Pumped Hydro	26.7	2.86	9.3
	Electric Vehicles	0	0	0
Markal 3.26 in Year 2050	Pumped Hydro	37.3	4.0	9.3
	Electric Vehicles	7.37	1.05	7.0
Higher Renewables in Year 2050	Pumped Hydro	186.7	20	9.3
	Electric Vehicles	22.1	3.15	7.0
Higher Nuclear in Year 2050	Pumped Hydro	37.3	4.0	9.3
	Electric Vehicles	9.46	1.35	7.0
Higher CCS in Year 2050	Pumped Hydro	37.3	4.0	9.3
	Electric Vehicles	7.52	1.07	7.0
Low Cost in Year 2050	Pumped Hydro	32.7	3.5	9.3
	Electric Vehicles	0	0	0
Friends Of the Earth in Year 2050	Pumped Hydro	186.7	20	9.3
	Electric Vehicles	22.1	3.15	7.0
Campaign to Protect Rural England in 2050	Pumped Hydro	65.3	7.0	9.3
	Electric Vehicles	18.2	2.6	7.0
Mark Brinkley in Year 2050	Pumped Hydro	186.7	20	9.3
	Electric Vehicles	28.3	4.05	7.0
National Grid in Year 2050	Pumped Hydro	37.3	4.0	9.3
	Electric Vehicles	9.46	1.35	7.0
Atkins in Year 2050	Pumped Hydro	65.3	7.0	9.3
	Electric Vehicles	16.7	2.38	7.0

The energy store control algorithm uses the difference between the net demand in each hour and the 24-hour moving average to smooth the net demand towards the 24-hour moving average and to reduce the size of peaks and troughs. The energy storage control strategy is also described in (23) but McKenna uses a reference price whereas FESA uses net demand. The control algorithm reduces the charging rate as the store approaches a full state and reduces its discharge rate as it approaches an empty state. It does this to avoid disturbances to the electricity system caused by suddenly becoming completely full or empty and the loss of usefulness of the store that either of these events would cause.

## **2.6 Generation Merit Order**

As illustrated in Figure 2, once energy storage and time-shifting of demand have been taken into account, the remaining net demand is that which must be met by conventional or controllable generation.

FESA allocates this on a merit-order basis, using four tiers approximately corresponding to carbon intensity, Figure 4. The least flexible low carbon generator outputs are calculated first (e.g. nuclear power), followed by the flexible low carbon generators (biomass or CCS), followed by the higher carbon (unabated fossil fuel), and then finally the least efficient and highest carbon-emitting generators (e.g. open-cycle gas turbines).

### **2.6.1 Less flexible low-carbon generators:**

There are four kinds of generation in the category of least flexible: Nuclear, hydro, geothermal and imports. The DECC 2050 Calculator model specifies an annual energy output for each of these types of generation (in TWh) as well as a maximum generating capacity (in GW). FESA therefore has to perform calculations to meet both these numbers for each type of generation. The inclusion of large hydro power in this category is a little anomalous since hydro can adjust its output from zero to full power over relatively short time frames. However, it is resource-limited by annual rainfall and has finite storage capacity. It has a relatively small contribution to total UK electricity generation, and is included here as a modelling simplification.

The inclusion of planned electricity imports in this category is also a little anomalous since imports are not necessarily low-carbon. Imports are treated as baseload generation in the DECC 2050 Calculator, and FESA aims to replicate its underlying assumptions as far as possible. Planned imports are limited by trading contracts.

Nuclear power stations each have a minimum operational power output, and tend to operate continuously for many months followed by planned and unplanned outages that FESA cannot model. Geothermal power has an availability in the DECC 2050 Calculator, but one applying to the whole year causing it to have a constant power output. Each generator does a share of load following, within the limitations described above. This is done by a linear relationship to net demand, equation (1) but each type of generation is subject to physical constraints as described in equations (2), (3) and (4).

$$P_G(t) = kD(t) + C \quad (1)$$

Where

$P_G(t)$  is the total power output of generators of type  $G$  in hour  $t$

$D(t)$  is the net demand (demand – intermittent renewable supply) in hour  $t$

$C$  and  $k$  are constants

Subject to constraints:

$$kD_{Max} + C \leq P_{GMax} \quad (2)$$

$$kD_{Min} + C \geq 0 \quad (3)$$

$$\frac{1}{T} \sum_{t=1}^T [kD(t) + C] = P_{GAve} \quad (4)$$

Where:

$D_{Min}$  and  $D_{Max}$  are the annual minimum and maximum values of net demand

$P_{GMax}$  is the available maximum power from generators of type  $G$

$P_{GAve}$  is the annual average power from generators of type  $G$

Each type of generation is controlled to maximise its usefulness for balancing supply and demand, in other words maximising their responsiveness to net demand. In mathematical terms, this means maximising the gradient,  $k$  in equation (1).

Depending on the ratio of  $P_{GAve}$  to  $P_{GMax}$  and the distribution of net demand,  $D$ , this is achieved by one of the following control regimes:

$$C \geq 0, \quad kD_{Max} + C = P_{GMax} \quad (5)$$

for  $P_{GAve}$  that is large relative to  $P_{GMax}$

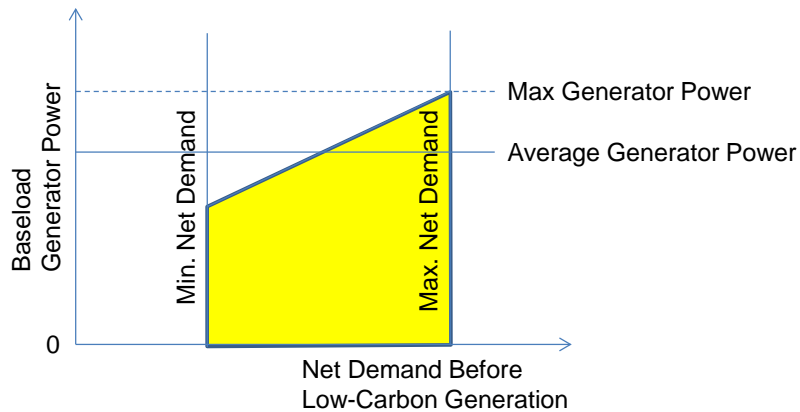
$$C = 0, \quad kD_{Max} \leq P_{GMax} \quad (6)$$

for  $P_{GAve}$  that is small relative to  $P_{GMax}$

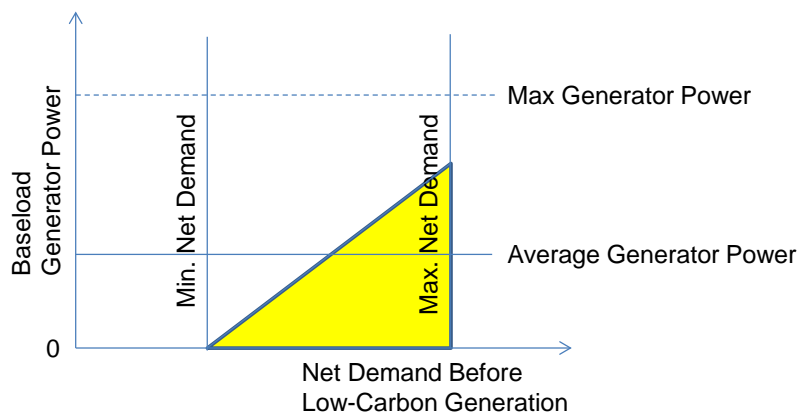
Equations (5) and (6) are shown as graphs in Figure 3 parts (a) and (b) respectively. When using inputs from the DECC 2050 Calculator equation (5) is appropriate for nuclear and geothermal power (where present), whereas equation (6) is appropriate for rainfall-limited hydro power and planned imports of electricity.



(a) A Baseload Generator With High Average Power



(b) A Baseload Generator With Low Average Power



**Figure 3. Calculation of less flexible generator powers (nuclear, hydro, geothermal or imports)**

### 2.6.2 More Flexible Low-carbon generators

In FESA, the least flexible low carbon generators described above are constrained to have the same annual total as in the DECC 2050 Calculator version of the pathway but all other forms of generation described in this section and following sections are allowed to be different in total electricity demand as they respond to demand hour-by-hour. More flexible low-carbon generators consist of biomass fuelled and CCS generators (coal or gas fired with CCS), which are lower carbon emitters than the older, unabated fossil fuel generators but are not entirely emission free, and they require fuel. Their position in the despatch merit order is therefore lower than the least flexible generators but higher than unabated fossil-fuelled generators. All three

have equal position in the merit order. At any hour of the year, the output of these generators exists in one of three states:

1. When net demand is already fully satisfied by energy storage, load shifting and less flexible generation, their output is zero.
2. When net demand is less than their combined maximum available generating capacity, they share the load-following duty, in proportion to the available generating capacity of each.
3. When net demand exceeds their combined maximum available generating capacity, they each run at their maximum.

The installed capacities and characteristics of low-carbon generators are read from the relevant worksheet of the DECC 2050 Calculator, I.a for biomass, I.b for coal CCS and I.b for gas CCS.

### **2.6.3 High-Carbon Generators**

These generators consist of unabated (i.e. without CCS) coal and gas fuelled generators using combined cycle gas turbines (CCGT). This tier of high-carbon generators only runs when the net demand exceeds the combined balancing capability of all the above balancing mechanisms and generators. High carbon generators then share the load-following duty with each other in the same way as low carbon generators, up to their combined maximum winter availabilities.

The installed capacities and characteristics of high-carbon generators are read from worksheet I.a of the DECC 2050 Calculator.

#### **2.6.4 Peaking plant**

These consist of oil-fired generators and gas-fired generators using less efficient but quicker responding open-cycle gas turbines (OCGT). Again, these generators only operate when the net demand exceeds the combined capacity of all the above generators and balancing mechanisms, and they generate up to their maximum winter availabilities.

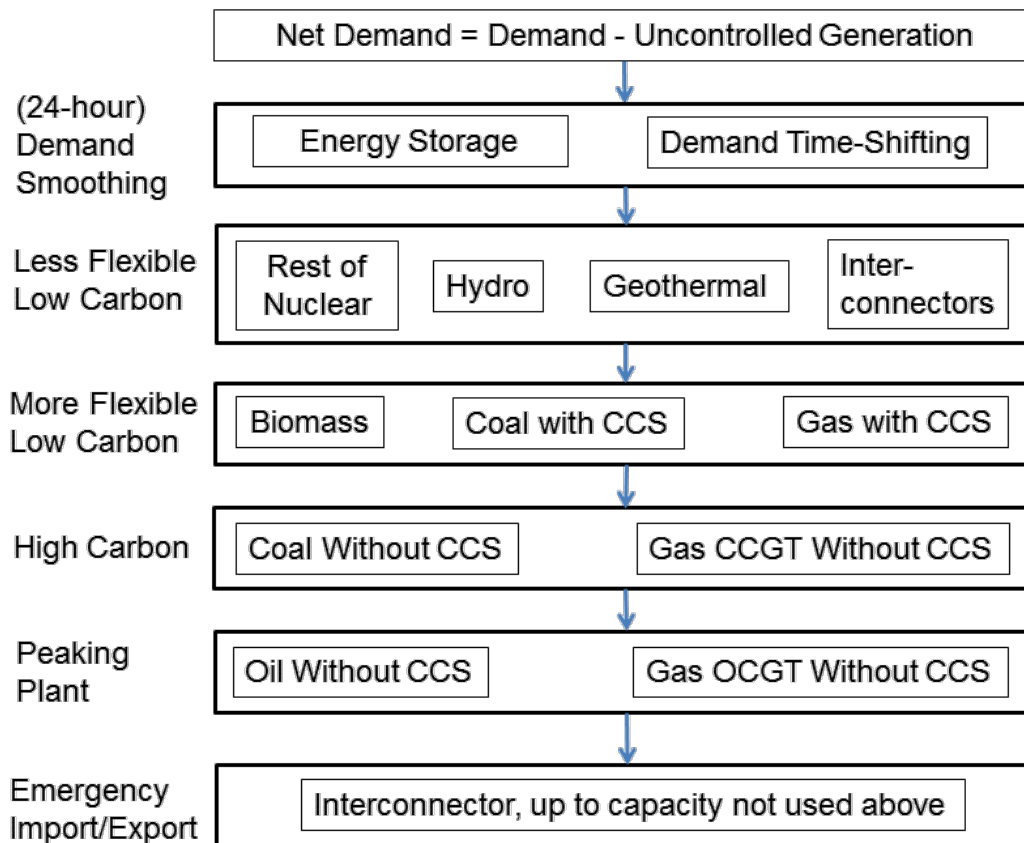
The installed capacities and characteristics of peaking plant come from two places: Oil-fired generation comes from DECC worksheet I.a but the gas-fired generation comes from the balancing worksheet, VII.c.

#### **2.6.5 Emergency import and export**

Any remaining shortfall or surplus of electricity is imported / exported if possible. This is in addition to the planned imports, and is only available up to the capacity of the interconnectors not used by the planned imports.

#### **2.6.6 Summary of merit order**

The merit order of measures to match supply with demand is shown below in Figure 4.



**Figure 4. Merit order of grid balancing**

### ***2.7 Pathways selected for study***

The DECC 2050 Calculator (3) models all energy use in the UK on an annual total basis in 2007, 2010 and then in 5 year steps to 2050 ensuring that annual energy supply matches energy use and losses at each stage of energy conversion. Demand is disaggregated into sectors approximately corresponding with the Digest of UK Energy Statistics (DUKES) with some further end-use disaggregation.

The DECC 2050 Calculator can of course model a huge variety of pathways to a low carbon economy, and even more potential pathways that fail to achieve an 80% reduction in greenhouse gas (GHGs) emissions by 2050. However, ten example low-carbon pathways have been chosen that were provided with the online and downloadable versions of the calculator, and those are the ones studied and

compared in this paper. These pathways are summarised for reference in the appendix. Four of these ten are 'Markal 3.26', 'Low Cost', 'Higher Renewables' and 'Friends of the Earth (FOE)' and are illustrative of the range of pathways.

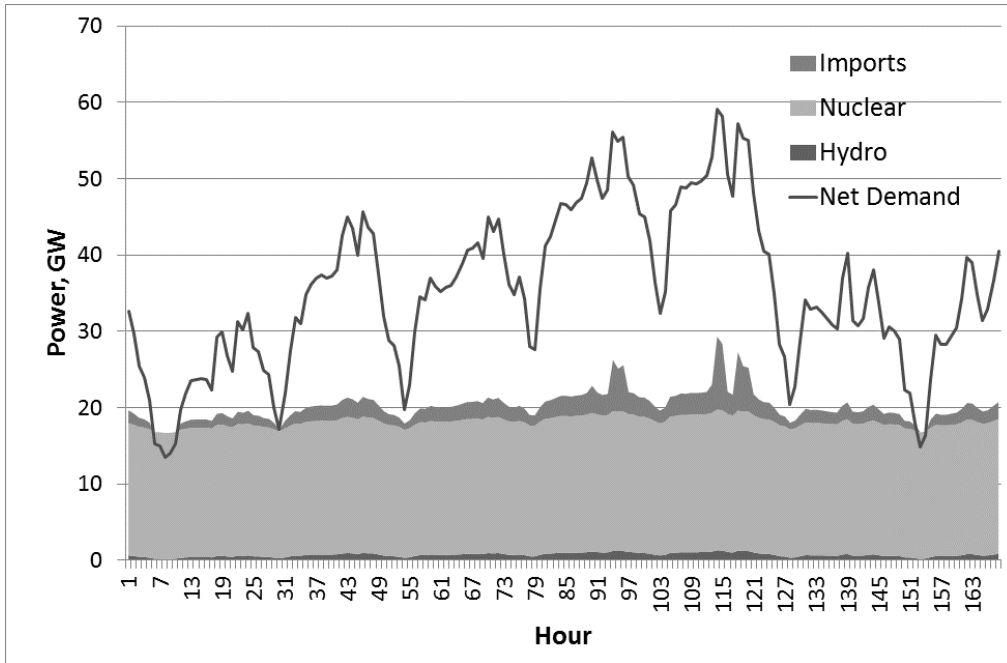
### **3 Results and Discussion**

The following graphs and tables show results of FESA time-step analysis. They reveal the extent of the grid balancing challenge in terms of unsatisfied demand and curtailed renewable generation. They also show that the DECC 2050 Calculator assumes high levels of capacity factor for fuelled generators and that this overestimates the amount of electricity needed from those generators.

The following sections describe these and other results in detail, comparing FESA analysis with the much simpler DECC 2050 Calculator results.

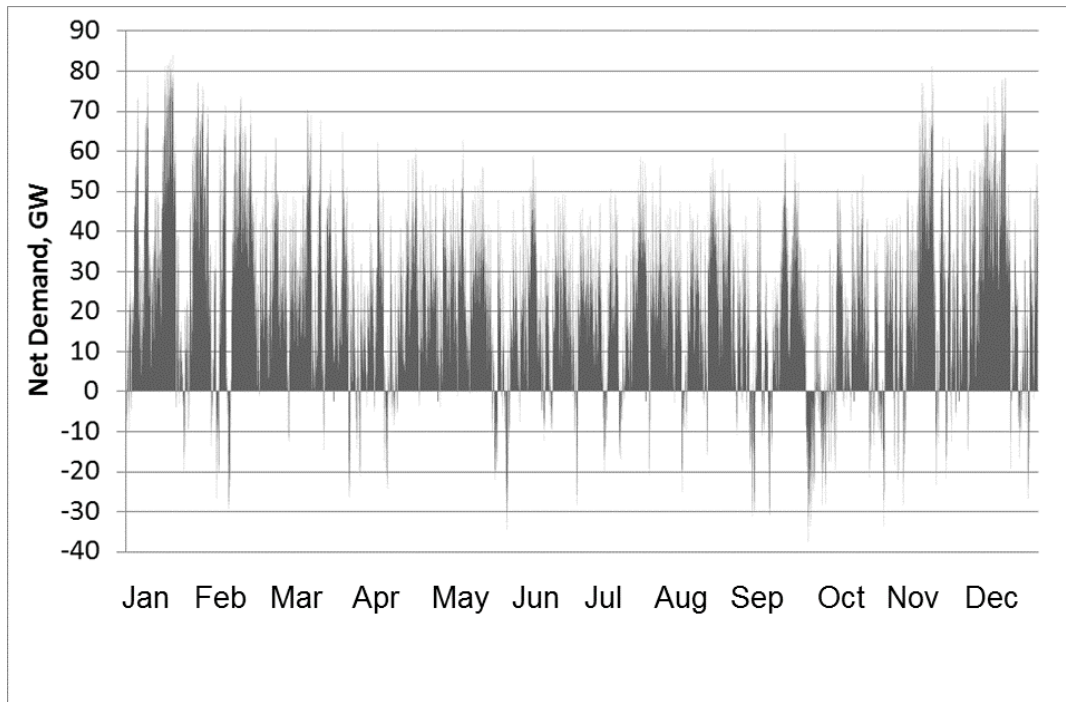
#### ***3.1 Electricity Generation Dispatch***

The use of less flexible low carbon generators in the first four days of January are shown in Figure 5. Nuclear power does a little load following but has almost constant power because its average level is close to its maximum level. In contrast, imported electricity and hydro power do more load following but at a lower average level.



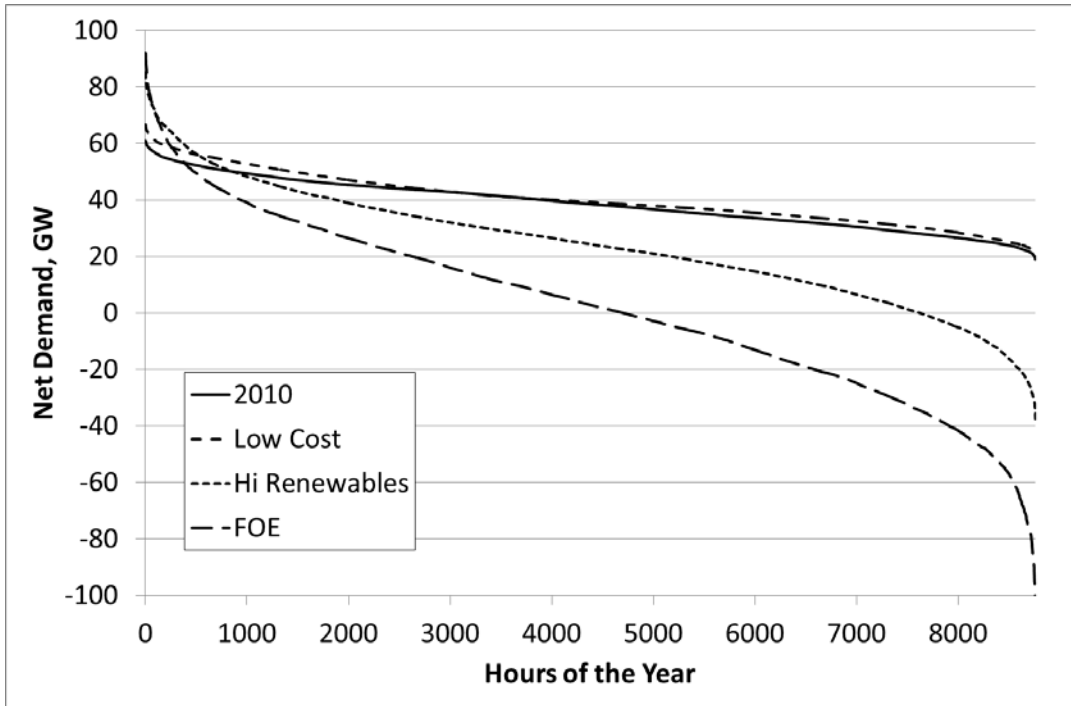
**Figure 5. Less flexible low carbon generators during the first 4 days of January under the DECC Markal 3.26 scenario in year 2040.**

### 3.2 Net Demand



**Figure 6. Net demand before energy storage and demand time shifting for the Higher Renewables pathway in 2050**

A typical result from the FESA time-step model is shown in Figure 6. When total electricity demand is increased due to heat pumps and electric vehicle charging, the peaks of net demand are higher than in the UK today but then offset by intermittent renewable generation that acts as negative demand, creating troughs that are sometimes negative. Renewable generation and demand are very variable, making the peaks and troughs very spikey. However, periods of low renewable generation lead to peaks lasting 2 or 3 weeks, and periods of high renewable generation result in troughs, again lasting for 2 or 3 weeks. When arranged in order of net demand to create load duration curves, the curves for the DECC low carbon scenarios in 2050 are mostly much steeper than for the UK in 2010, Figure 7.



**Figure 7. Net Demand Duration Curves for the UK in 2010 and under 3 low-carbon scenarios in 2050**

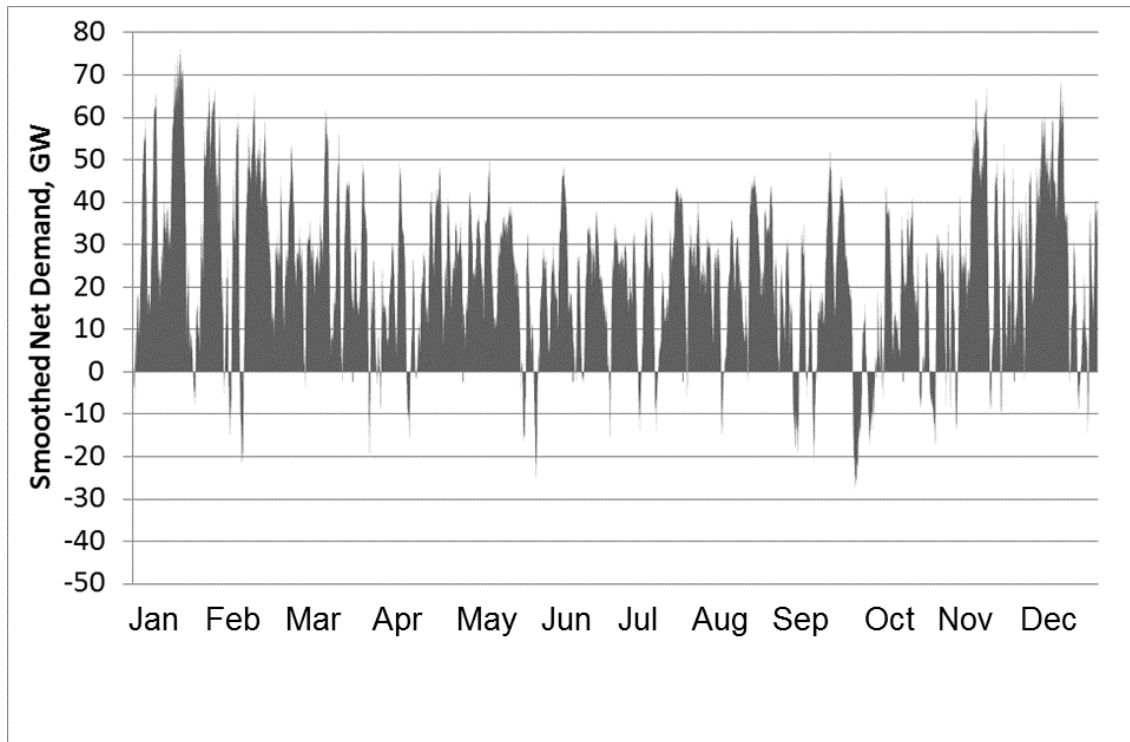
Figure 7 shows the total variability of net demand of three extreme scenarios: a typical one (Higher Renewables), one that is difficult to balance (FOE) and the easiest to balance (Low Cost). These curves do not include the inflexible ‘must run’ portion of nuclear power, which would shift all the curves lower. Under the ‘Low Cost’ scenario in 2050, the variability is only slightly greater than in 2010, but even here, the peak demand is higher. In the ‘Higher Renewables’ scenario, the curve is much steeper, and goes negative (surplus power) for a significant portion of the year. The FOE scenario shows a surplus for nearly half the year. The overall picture is that the grid balancing challenge is considerably greater under most low-carbon scenarios.

### **3.3 Energy Storage and Demand Shifting**

After energy storage and demand shifting are applied using the quantities shown in Table 1, the net demand variability is reduced under all scenarios. The Higher

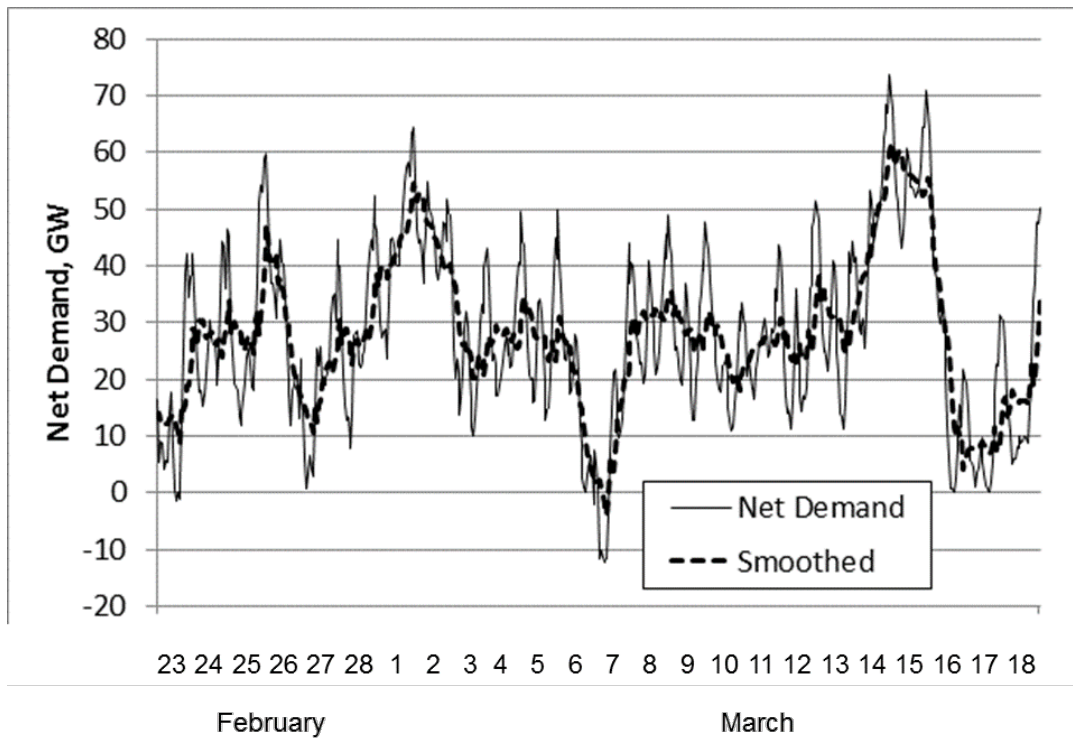


Renewables pathway in 2050 is shown again after storage and demand shifting in Figure 8.



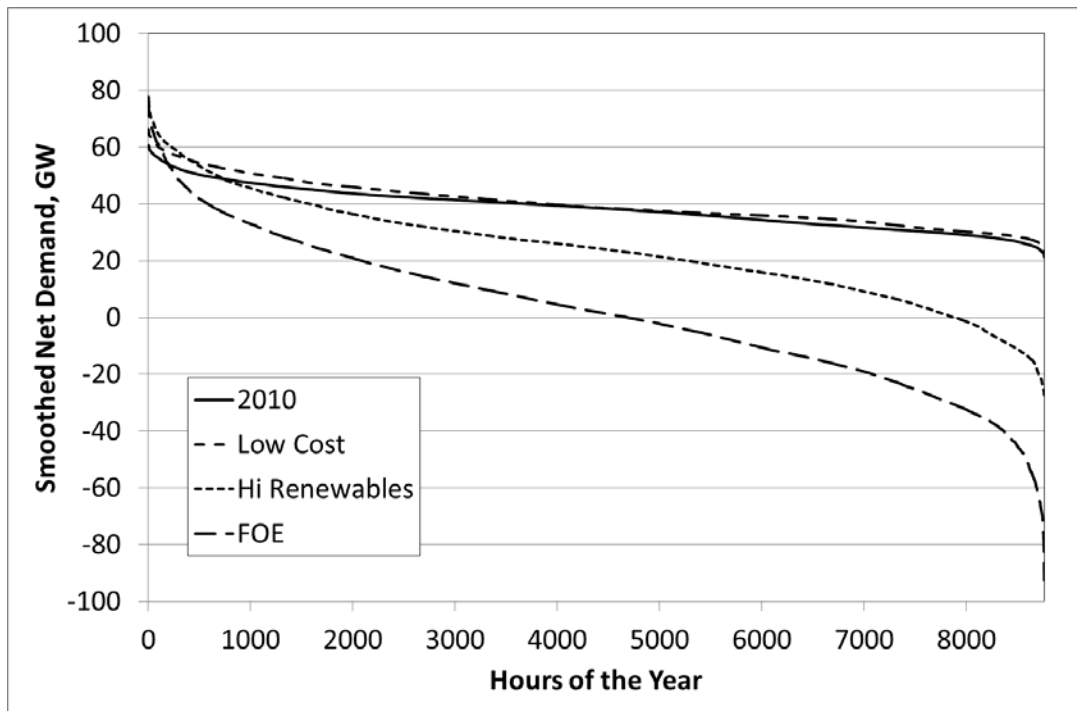
**Figure 8. Higher Renewables pathway in 2050 after application of storage and time-shifting of demand**

Figure 8 shows a reduction in the hour-to-hour variation in net demand and also a reduction in the extremity of peaks and troughs. These reductions are more easily seen by zooming in on a shorter period of time, Figure 9.



**Figure 9. Higher Renewables pathway in 2050 before and after application of storage and time-shifting of demand, 24 days in February and March**

When this data is translated into load-duration curves, Figure 10, we also see a small reduction in the gradient of each curve and a small reduction in the range of net demand. However, the gradient and shape of the curves still depends very strongly on the pathway, and is still steeper than in 2010 indicating that energy storage and flexible demand have not solved the problem.



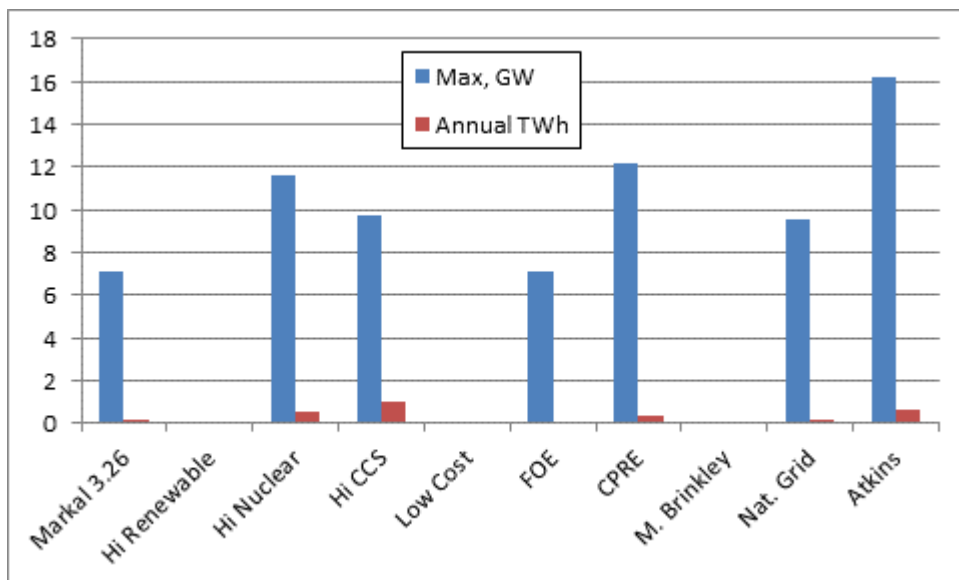
**Figure 10. Net Demand Duration Curves for the UK in 2010 and under 3 low-carbon scenarios in 2050, after energy storage and time-shifting of flexible demand**

Furthermore, this analysis indicates the importance of long-term storage. Short-term variations in net demand can be smoothed out by today's pumped hydro energy storage and demand-shifting as modelled in FESA, but longer-term variations cannot. FESA shows that most variation in net demand falls into this second category, with peaks and troughs persisting for several days, Figure 9, or even up to 2 weeks, Figure 8.

### **3.4 Unsatisfied Electricity Demand**

FESA shows that seven of the ten low-carbon DECC pathways suffer from some unsatisfied electricity demand by 2050. The maximum unmet demand power level is fairly large, up to 16.2 GW in the Atkins pathway, Figure 11, but the annual energy shortfall is modest, the largest being just 1.0TWh in the Higher CCS pathway. This means that the shortfall occurs for just a few hours on a few days of the year with the

very highest peaks of net demand and might be accommodated by a little more flexible, time-shifted electricity demand and a little more flexible generation. The DECC 2050 Calculator uses a stress test of a 5-day period of low wind speeds and below-average temperatures (3). The DECC 2050 Calculator adds extra peak generating plant and some demand flexibility to aid grid balancing, but our modelling indicates that more is needed than was anticipated when the pathways were created. It is also apparent that, with the exception of Friends-Of-the-Earth, the pathways with the highest shortfall are also ones that do not include the highest level of flexibility in the form of energy storage, extra peak generation, international interconnectors and demand flexibility. Our modelling shows that when the DECC 2050 Calculator example pathways were created, the grid balancing challenge was under-estimated, especially the height of the worst winter peak of electricity demand, which in FESA were modelled using weather data from year 2001.



**Figure 11. Unmet power as a maximum power shortfall and annual unmet energy demand for each pathway in 2050, as modelled by FESA**

On the one hand, extra flexibility should be quite feasible: It should be noted that the DECC 2050 Calculator specifies the flexibility of electric vehicle charging but does not include any flexibility in space heating or water heating. On the other hand, FESA already assumes that international interconnectors are fully accommodating to the needs of UK electricity systems. This may be an optimistic assumption given that the UK's European neighbours may experience similar shortfalls of electricity at the same time, and therefore be unable to export electricity to the UK. FESA may therefore underestimate the amount of unsatisfied electricity demand. The DECC 2050 Calculator assumes only 75% availability of imported power which goes some way to modelling the limited availability of imported power, but then under-estimates the peaks of electricity demand.

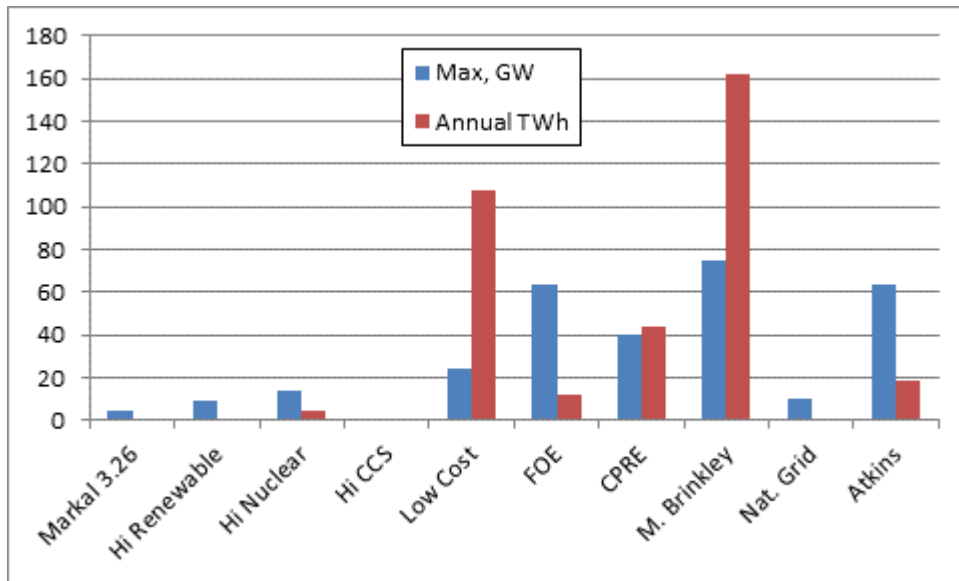
It should also be noted that all these forms of demand response (electric vehicle charging, water heating and space heating) would do little to solve the lack of storage volume over longer multi-day periods, as raised elsewhere.

### ***3.5 Curtailed Excess Power***

FESA predicts that at other times of the year and under different weather conditions, most of the DECC pathways experience a surplus of electricity from the renewable and the less-flexible low-carbon generators when modelled in FESA. This surplus cannot all be used by energy storage, flexible demand or exported through international interconnectors, even assuming a market for that surplus in the UK's neighbouring markets. The DECC 2050 Calculator does include some calculation of ability to cope with winter-peak demand, but it does not consider surpluses, which vary greatly from one pathway to another. By year 2050 the maximum values and annual totals of curtailed (and therefore lost) electricity are shown in Figure 12.

These figures are a minimum, firstly because neighbouring countries may not always

be able to accommodate surplus electricity from the UK and secondly because other transmission and operational constraints on the grid are ignored. For example, the electricity system of Ireland can only accommodate a certain percentage of non-synchronous generation, which limits the penetration of wind power to 50% of system demand in the Irish electricity system (24-26).



**Figure 12. Curtailed surplus generation in each DECC pathway in year 2050, as a maximum power and as an annual total energy**

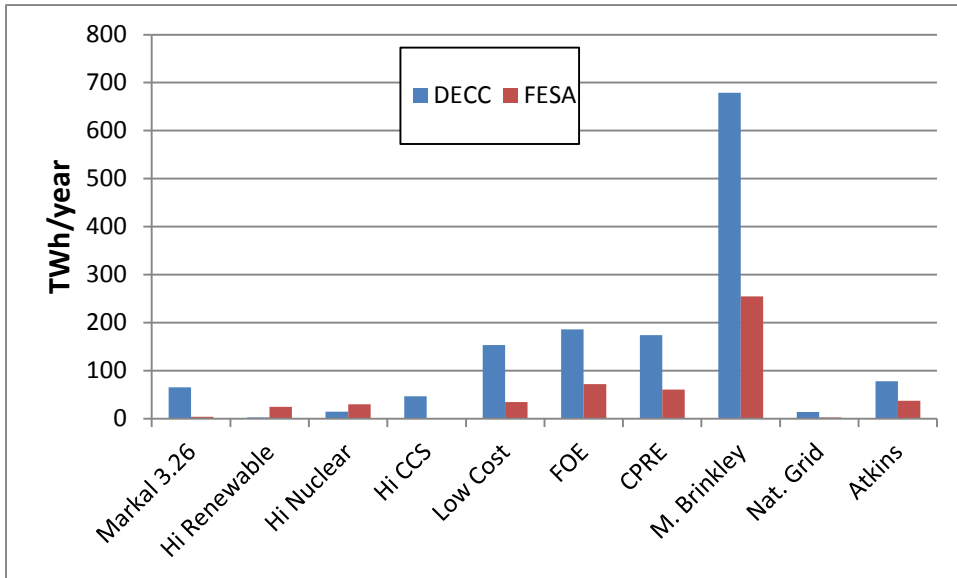
It can be seen in Figure 12 that surpluses of electricity are generally much larger than the shortfalls of Figure 11. To put these numbers into context, 60GW of surplus power (Friends-Of-the-Earth, Mark Brinkley and Atkins) is greater than the UK's winter peak electricity demand all being wasted, and 160TWh of energy (Mark Brinkley) is equal to half of a typical year's total electrical energy in 2010. These surpluses therefore represent a huge wasted resource if not used, stored or converted into a fuel. At the same time, in all pathways, the UK is a net importer of fuel in 2050, see Section 3.9. Longer term storage would reduce the amount of exported and curtailed energy in each pathway, while eliminating the unmet demand and reducing the need for installed capacity of despatchable generators and their

fuel use. Investments in this longer term storage capacity are currently prevented by the high cost of long-term storage options and are outside the scope of this paper, but it is unlikely that it will ever be cost-effective to use energy storage to eliminate all curtailed energy. A cost-benefit analysis of longer term storage options is the subject of ongoing research using FESA modelling.

### **3.6 Exported Electricity**

Because exported electricity has to accept whatever international markets will pay for it, the price is likely to be low. Arguably, this is a wasted resource given that the UK is a net importer of fuels under all the scenarios in year 2050, Section 3.9.

All of the pathways export some electricity by 2050, but the amount varies greatly from one pathway to another. The maximum exported power is usually limited by the power rating of international interconnectors but the total annual exported energy is largely determined by the hourly balance of supply and demand (FESA) or by the annual total balance (DECC 2050 Calculator). In most pathways, the exported energy in 2050 is much greater when modelled by the DECC 2050 Calculator than when modelled by FESA, Figure 13. This is a function of the despatch algorithms: The DECC 2050 Calculator merely assumes a constant, annual capacity factor for each type of generator, which results in a large over-supply of electricity from despatchable generators, regardless of the need for that electricity, see section 3.8.



**Figure 13. Annual exported electricity in 2050 predicted by the DECC 2050 Calculator and by FESA**

Figure 13 shows that the amount of exported energy varies greatly from one pathway to another but when the amounts are large, the DECC 2050 Calculator's estimate is typically greater than FESA's by a factor of 2 or 3, a consequence of the large assumed capacity factors of dispatchable generators in the DECC 2050 Calculator.

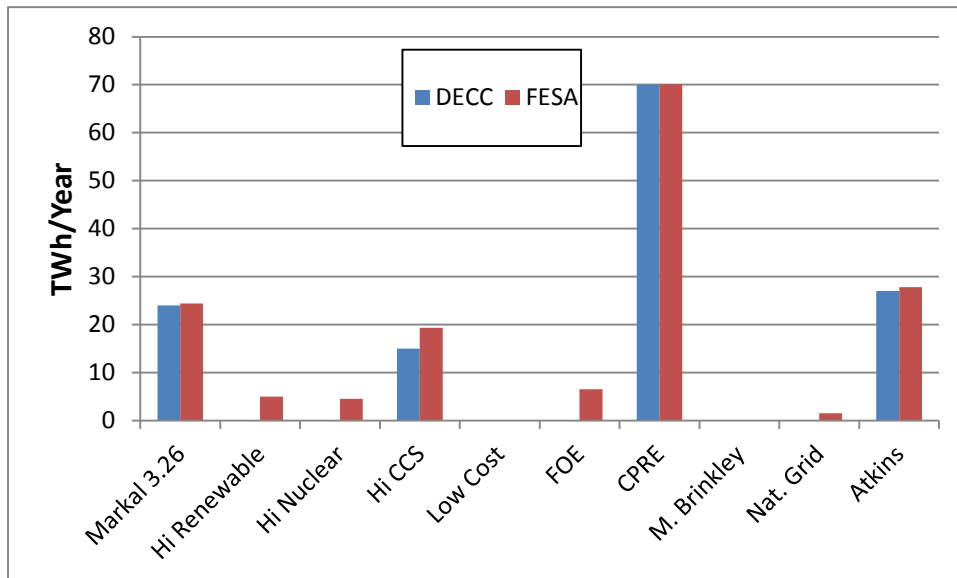
In just two pathways (Higher Renewables and Higher Nuclear), FESA predicts more exported energy than DECC does, but still a small quantity. In these cases, electricity is exported on the few occasions when renewable and nuclear powered electricity exceed demand.

### **3.7 Imported Electricity**

In the DECC 2050 Calculator, imported electricity is an input parameter to the model, and that is carried over into the FESA interpretation of the same pathways. However, when needed, FESA adds to imported electricity to meet occasional peaks of net demand. These periods of high demand and low renewable supply are rare and add



just a small amount to the annual total imported electricity, Figure 14. As with exports, the annual maximum imported power is usually equal to the power capacity of the international interconnectors, but the imported power only reaches this limit in a few hours of the year. The power capacity limit makes only a small difference to the annual imported energy.



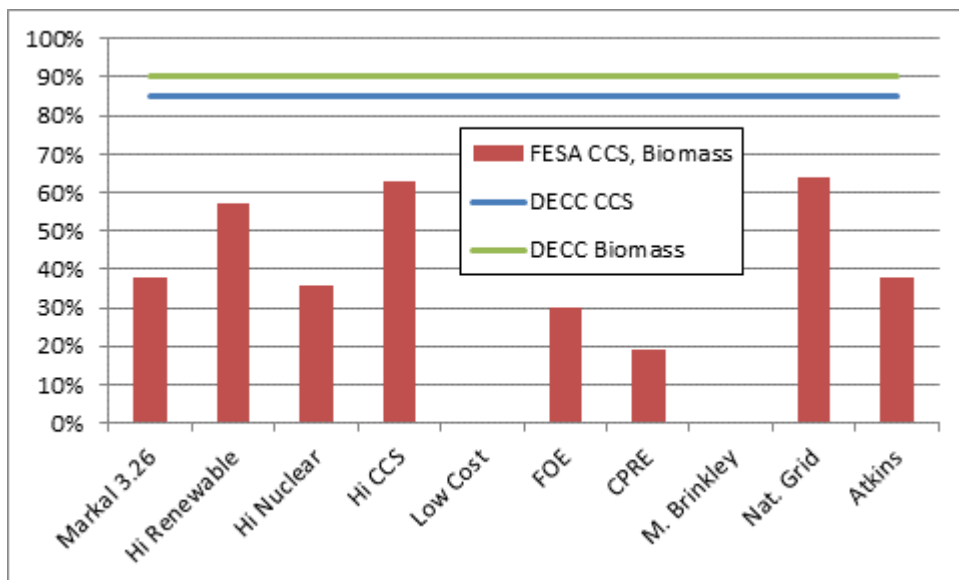
**Figure 14. Annual imported electricity in 2050 predicted by the DECC 2050 Calculator and by FESA**

Figure 14 shows that the imported electricity is dominated by the planned imports (4 of the pathways) but that FESA predicts a small increase in imports to accommodate periods of low supply and high demand (7 of the pathways). These extra imports for grid balancing, Figure 14, are an order of magnitude smaller than exported surpluses, Figure 13.

### **3.8 Capacity Factors**

The capacity factors of despatchable (flexible) generation are a significant difference between the DECC 2050 Calculator and FESA, and are lower in FESA despite the use of smart demand shifting. In the DECC 2050 Calculator, all capacity factors are an input parameter but in FESA, the capacity factors of the despatchable generators

are an output of the program, calculated by the grid balancing algorithm. FESA maintains the same capacity factors as DECC for the least flexible generators: non-thermal renewables, nuclear, hydro and geothermal generators. At the other end of the merit order, the open cycle gas turbines, oil-fired power stations and older, unabated coal and gas-fired power stations either operate at low capacity factor anyway by 2050, or have small installed capacity. In the middle of the merit order in 2050 are coal and gas with CCS and biomass fuelled generators, which have assumed high capacity factor in the DECC 2050 Calculator but a much lower capacity factor in FESA by year 2050, Figure 15.



**Figure 15. Generation capacity factors calculated by FESA, after smart demand-shifting, compared to those assumed by the DECC 2050 Calculator, in year 2050**

Figure 15 shows that in all 10 pathways, the capacity factors of CCS and biomass plant calculated by FESA are substantially lower than those of the DECC 2050 Calculator, and in some cases zero or virtually zero. Note that the use of smart demand-shifting makes virtually no difference to the capacity factors of CCS in

FESA, and fails to bring them close to the levels assumed in the DECC 2050 Calculator. Of equal importance is the rate at which these capacity factors decline, Figure 16, which is a function of the rate at which CCS generators are constructed, Figure 17 compared to the slow-down in electricity requirement from these plants, Figure 18. After an initial increase in capacity factor until 2030 when CCS technology becomes mature and more reliable (an effect copied across from the DECC 2050 Calculator) the capacity factors fall rapidly due to lack of electricity demand. The combined data of coal and gas CCS generators are shown for illustration, but all three generator types (gas with CCS, coal with CCS and biomass) have similar and converging capacity factors.

The capacity factors could be increased in FESA, or the amount of exported electricity in the DECC 2050 Calculator could be reduced, by reducing the installed capacity of CCS and biomass generators. However, that would reduce the electricity system's ability to meet peak net demands or jeopardise the 80% reduction in greenhouse gas emissions by 2050.

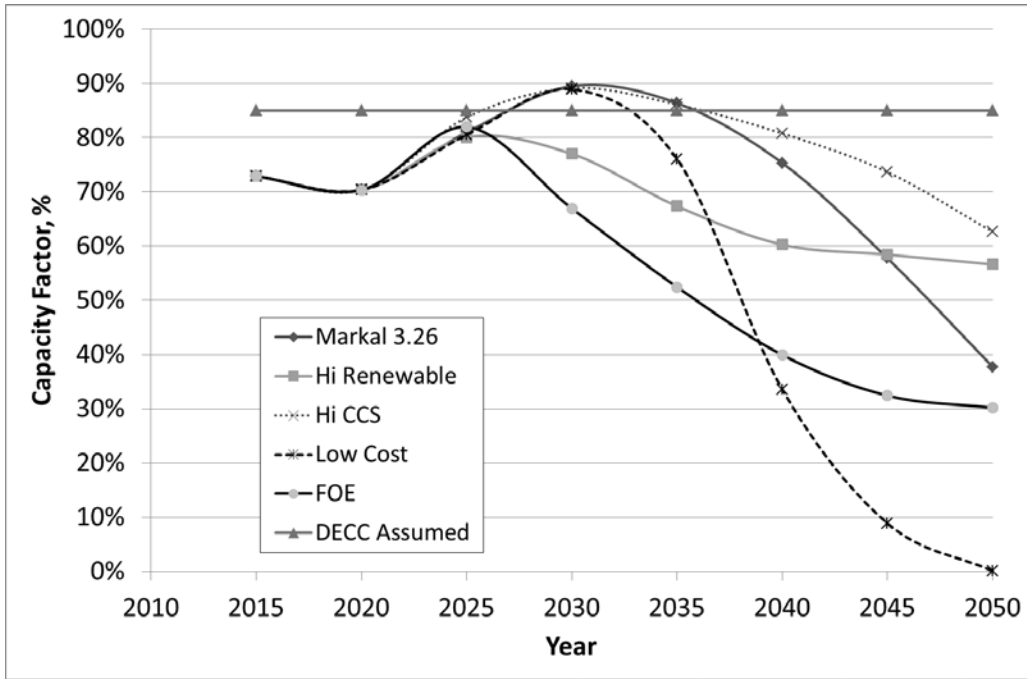


Figure 16. Combined capacity factors of CCS generators, years 2015 to 2050

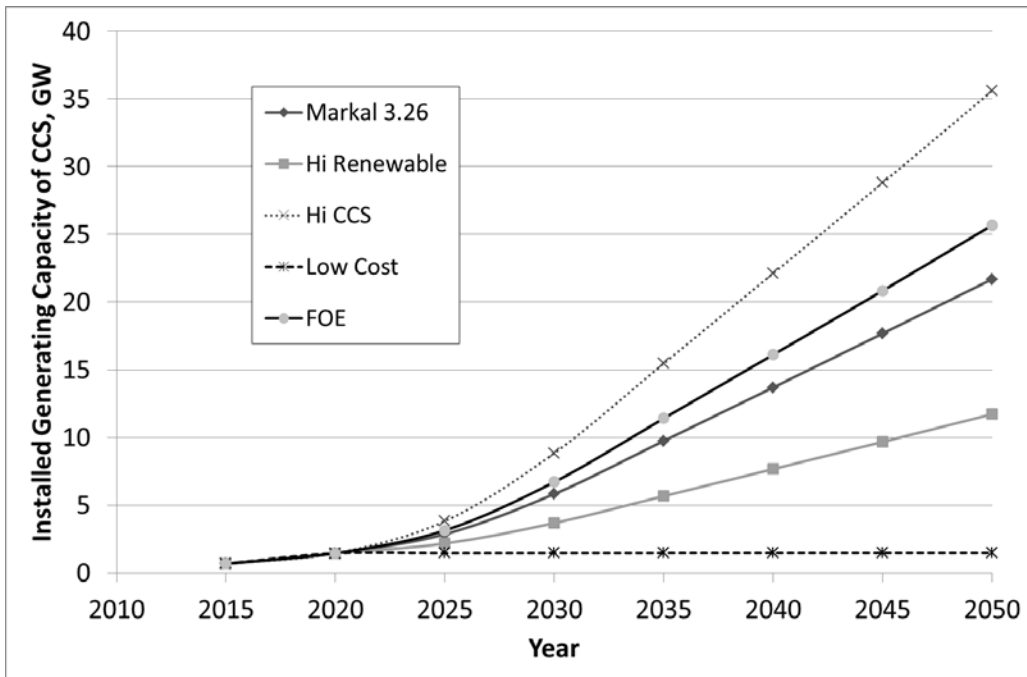
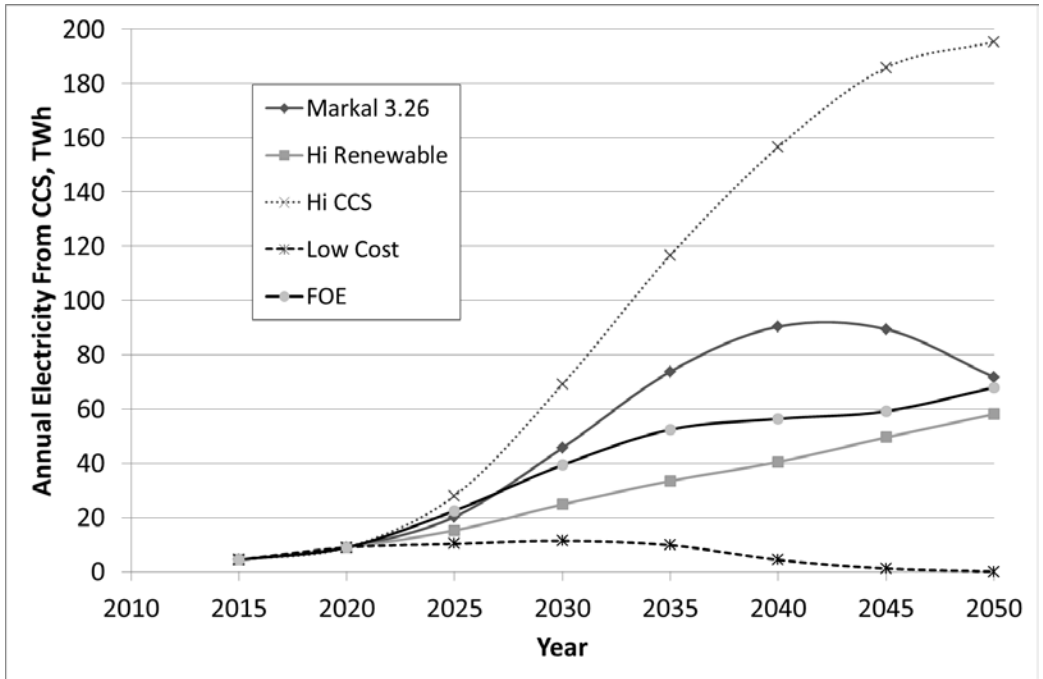


Figure 17. Total installed capacities of CCS generators, years 2015 to 2050



**Figure 18. Total annual electricity from CCS generators, years 2015 to 2050**

Figure 16, Figure 17 and Figure 18 show that low capacity factors of CCS generators are more serious in some pathways than others. The Higher CCS and National Grid pathways have high installed capacities of CCS, Figure 17 and high use, Figure 18, resulting in a high and maintained capacity factor, Figure 16. At the other end of the scale, the Low Cost and Higher Nuclear pathways make very little use of CCS, but have very little installed capacity, resulting in relatively few stranded assets.

All the other six pathways have stagnating or declining output from CCS generators beyond 2035, continuing high installation rates and declining capacity factors, putting into question the financial viability of CCS (and biomass) generators constructed after 2030 in these pathways. The most unrealistic pathway appears to be Mark Brinkley, where 35GW of CCS plant is installed between 2010 and 2050, most of it after 2035, but virtually none of it is used after 2030.

### 3.9 Imported Fuels

Under all ten pathways in year 2050, the UK is a net importer of fuels. The picture with regard to some individual fuels (natural gas, coal, liquid biofuels and solid biomass) is a mixed one when modelled by FESA, Figure 19 but the total is always in the direction of imports to the UK. The UK always imports liquid crude oil and oil products but it always exports coal. In almost all cases, FESA predicts smaller imports of fuel (especially natural gas) and greater exports (coal) than when modelled by the DECC 2050 Calculator, Figure 20. This is because FESA recognises when electricity generation is not needed in the UK and reduces the capacity factor of despatchable generators, which in turn reduces fuel consumption.

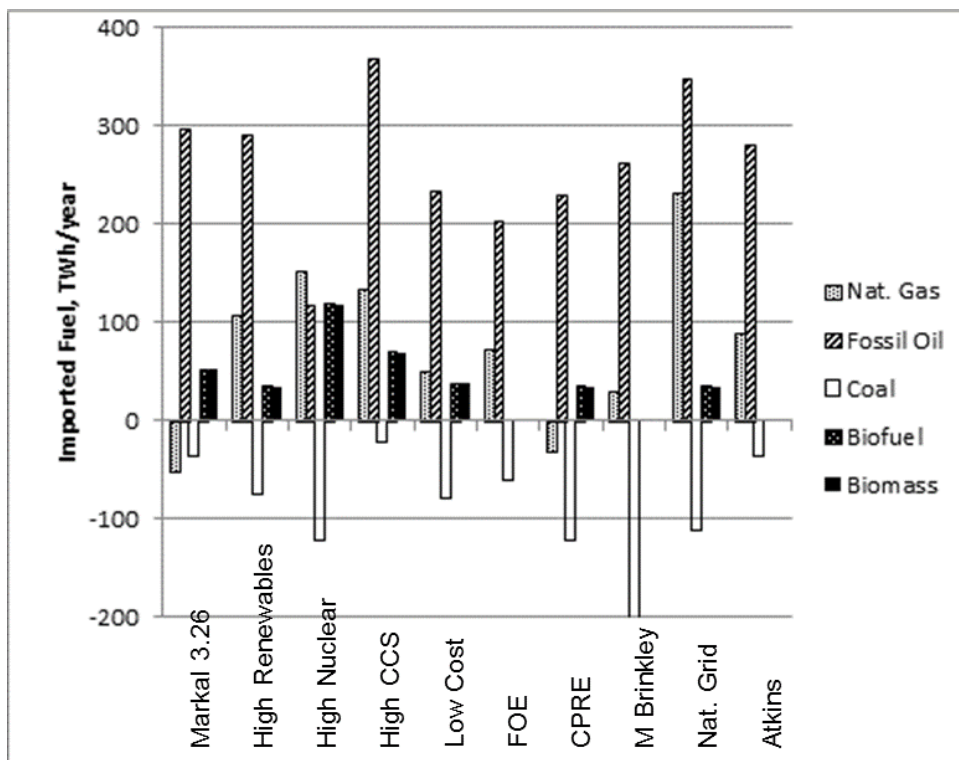
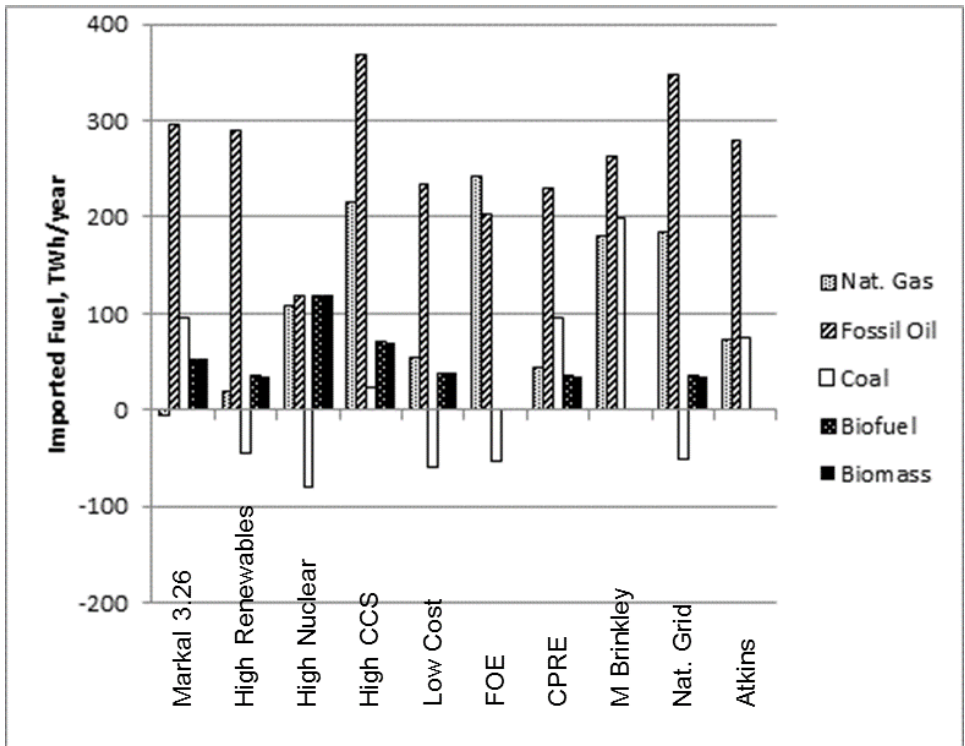


Figure 19. Annual imported fuels modelled by FESA in year 2050



**Figure 20. Annual imported fuels modelled by DECC 2050 Calculator in year 2050**

Of all the pathways, the one created by Mark Brinkley has the smallest overall level of total imported fuel when modelled by FESA, Figure 19. This pathway may have been a deliberate attempt to create self-sufficiency in energy, but results in a very large surplus of electricity without eliminating imports of fuel.

Since the DECC pathways were created, hydraulic fracturing ('fracking') technology has substantially increased the extraction rate of natural gas and oil in the USA. If in the future, hydraulic fracturing also increases oil and gas production in the UK, then the UK may not become a net importer of fuels. Nevertheless, the UK would remain heavily dependent on fossil fuels.

### **3.10 Overall View of the Merits of the Pathways**

Combining and comparing the above results, it is possible to see which pathways do best overall in balancing supply and demand of electricity while making good use of generation assets, Table 2. The peak and annual total values of unmet demand are self-explanatory, while the annual curtailed energy and annual exported energy were explained above in Sections 3.5 and 3.6. The ‘stranded CCS capacity’ is the total generating capacity of CCS installed, subtracting the generating capacity that would give the same amount of annual electricity if operated at 85% capacity factor, as assumed in the DECC 2050 Calculator.

<b>Pathway in Year 2050</b>	<b>Peak Unmet Demand, GW</b>	<b>Annual Unmet Demand, TWh/y</b>	<b>Curtailed Energy, TWh/y</b>	<b>Exported Energy, TWh/y</b>	<b>Stranded CCS Capacity, 10GW</b>
Markal 3.26	7.1	0.2	0	3.8	<b>12.1</b>
Higher Renewables	0	0	0.3	24.7	3.9
Hi Nuclear	<b>11.6</b>	<b>0.5</b>	4.6	29.5	0.9
Hi CCS	<b>9.7</b>	<b>1</b>	0	0.01	9.4
Low Cost	0	0	<b>107.7</b>	34.7	1.5



FOE	7.1	0.03	11.7	<b>72</b>	<b>16.6</b>
CPRE	<b>12.2</b>	<b>0.3</b>	<b>43.8</b>	<b>60.8</b>	<b>19.4</b>
M. Brinkley	0	0	<b>162.3</b>	<b>254.9</b>	<b>35.2</b>
Nat. Grid	<b>9.5</b>	0.2	0.2	2.3	6.2
Atkins	<b>16.2</b>	<b>0.6</b>	18.9	37.3	10.2
Arithmetic Average Values	7.3	0.28	35	52	11.5

**Table 2. Pathway performance parameters as calculated using FESA in year 2050**

Thresholds have been chosen as shown in the last line of Table 2, indicating whether a pathway is better or worse than average in each category, also indicated by numbers in bold and italics for numbers that are larger and therefore worse. We can see that the Markal 3.26, Higher Renewables, Low Cost and National Grid scenarios in 2050 perform well in all or all but one of the categories, while the Campaign to Protect Rural England and Mark Brinkley perform poorly in at least three categories. Note that if the additional, fuel-saving uses of excess electricity were included as described in section 3.12 then the picture might look much better for these scenarios with large amounts of exported or curtailed energy.

### **3.11 Limitations of the Models**

FESA is a single-node model: it assumes unconstrained power flows throughout the UK. Spatial disaggregation of intermittent renewables may reveal point stresses on parts of the system, but it should be noted that the intermittent renewables are distributed around the UK in useful way: solar PV is predominantly in the South of the UK, close to centres of demand; Onshore wind is located mainly in the North and West of the UK but is balanced to some extent by Offshore wind located in shallow seas around the South and East of the UK.

It includes international interconnectors but the grid balancing problem within the countries at the other end of each connector is outside the scope of the model. The use of international interconnectors might therefore be seen as unrealistically favourable to the UK: Weather patterns can span several countries, especially high-pressure weather systems and might cause a simultaneous drop in wind power output. Why would the UK's neighbours accommodate the needs of the UK when they might also experience similar grid balancing problems at the same time? These simplifications are shared with the DECC 2050 Calculator and are further reasons that both models under-estimate the grid balancing problem. In the worst-case, if the UK is unable to import power at times of peak net demand, the peak unmet demand, Table 2, could be increased by the power rating of the interconnector, ranging from 4GW in the case of the Low-cost pathway to an additional 30GW in the Higher Renewables, FOE and M. Brinkley pathways. In justification of this model of interconnectors, continental Europe is geographically larger and more fully integrated between different countries, and therefore more able to aggregate electricity supply and demand over a larger area.

FESA also under-estimates the grid balancing challenge because it only uses one year of weather data and demand data. Year-to-year variability means that in some years the unmet demand or curtailed power will be much worse. In the real UK electricity systems of 2016, more margin is built into the despatchable generating capacity. Analysis of inter-annual variation in renewable energy generation, for example wind resource (27) indicates that over a 30-year period the weather-related annual average capacity factor of onshore wind power can vary between 24% and 36%. If the amount of installed wind power were sized for the worst year, then the best year might result in an over-supply of 50% which would be curtailed. Conversely, if wind power is sized for an average year, then a worst year will leave a 20% shortfall in wind power and a greater risk of unmet demand.

### ***3.12 The Need for More Flexibility and Energy Storage***

The DECC 2050 Calculator is limited because it fails to pursue ways of reducing the surplus of electricity, sections 3.5 and 3.6, by using it to save or make fuels. There are many potential technologies to do this: electric water heating with hot water storage (28-30), electric space heating, electrification of industrial and agricultural processes, flexible use of plug-in electric vehicles (PHEVs) (31). In this context, the electrification of water heating, space heating, industrial and agricultural processes, and vehicles means the use of additional, secondary systems such that electricity is used when available, but fuels are used when electricity is not available. Flexibility also includes the greater deployment of grid-connected bulk energy storage, flexible hydrogen production by electrolysis of water (power-to-gas) (32,33), and production of synthetic fuels (34)

Inputs to FESA were set up to be as faithful as possible to the DECC 2050 Calculator, and in so doing, neither the DECC 2050 Calculator nor FESA include these energy transformations. If they were included, the electricity surpluses of sections 3.5 and 3.6 would be reduced, as would the fuel imports of section 3.9.

## **4 Conclusions**

The FESA model has been used to perform an hourly time-step analysis of the ten low-carbon example pathways of the DECC 2050 Calculator version 3.4.6 using the same assumptions as far as possible, and taking as many inputs as possible directly and automatically from the Excel version of the DECC 2050 Calculator. This analysis reveals the following.

- The grid balancing challenge is much greater than is suggested by the DECC 2050 Calculator.
- Most of the example pathways fail to meet the peaks of net electricity demand, even with smart grid technologies, flexible demand and flexible imports. In most cases, the unmet demand is a modest shortfall of power, up to 16 GW peak, and a very small shortfall in annual energy, not more than 1 TWh/year and persisting for only a few hours.
- The DECC 2050 Calculator's assumptions of large installed generating capacities, together with high capacity factors for despatchable generators, result in very large surpluses of electricity not required in the UK. The Calculator makes a poor assessment of these surpluses. In most cases, it predicts a large excess of electricity that is exported, but fails to calculate how much is in excess of what can be exported. FESA calculates that a large

amount of energy is curtailed, with up to 75 GW peak and 160 TWh/year completely lost. These surpluses can persist for many days and indicate the importance of developing long-term energy storage technologies (days and weeks, not just hours) including power-to-gas or other fuel-producing technologies.

- When analysed in FESA, all the example pathways result in a lower capacity factor for CCS and biomass generators than indicated in the DECC 2050 Calculator. In several of the pathways this results in many GW of generating capacity operating for only a few hours of the year, only a few years after it is constructed. Demand shifting makes little improvement. It is therefore doubtful that all these generators, especially some of those with CCS, can be financially viable under those DECC pathways.
- Both DECC 2050 Calculator and FESA predict that in most of the pathways, the UK will be a large net importer of fuels, or a large net exporter of electricity, or both by year 2050.
- Short-term time-shifting forms of demand response have very limited benefit to grid balancing but fuel-switching technologies show promise in helping to address many of the above problems, by flexibly using electricity instead of a fuel. Fuel switching technologies currently omitted from the models include flexible heating systems, flexible operation of plug-in hybrid vehicles and power-to-gas.

## **5 Acknowledgement**

This work was supported by the Engineering and Physical Sciences Research Council, UK, within projects: Realising Transition Pathways - Whole Systems Analysis for a UK More Electric Low Carbon Energy Future EP/K005316/1 and Integrated, Market-fit and Affordable Grid-scale Energy Storage (IMAGES) EP/K002228/1.

## References

1. Climate Change Act Chapter 27, UK Government. 2008 [cited 2014].  
Available from: <http://www.legislation.gov.uk/ukpga/2008/27/contents>;
2. Carbon Plan, UK Government. 2011 [cited 2014]. Available from:  
<https://www.gov.uk/government/publications/the-carbon-plan-reducing-greenhouse-gas-emissions--2>;
3. 2050 Pathways Analysis, UK Department of Energy and Climate Change (DECC). 2010 [cited 2014]. Available from:  
[https://www.gov.uk/government/uploads/system/uploads/attachment\\_data/file/68816/216-2050-pathways-analysis-report.pdf](https://www.gov.uk/government/uploads/system/uploads/attachment_data/file/68816/216-2050-pathways-analysis-report.pdf);
4. Foxon T, Hammond G and Pearson P. Developing transition pathways for a low carbon electricity system in the UK. Technol. Forecasting Social Change 2010; 77(8): 1203-1213. DOI:10.1016/j.techfore.2010.04.002
5. Trutnevyte E, Barton J, O'Grady A et al. Linking a storyline with multiple models: A cross-scale study of the UK power system transition. Technol. Forecasting Social Change 2014; 89: 26-42.  
DOI:10.1016/j.techfore.2014.08.018
6. Barnacle M, Robertson E, Galloway S et al. Modelling generation and infrastructure requirements for transition pathways. Energ. Policy 2013 1; 52: 60-75. DOI:10.1016/j.enpol.2012.04.031

7. Barton J, Huang S, Infield D et al. The evolution of electricity demand and the role for demand side participation, in buildings and transport. *Energ. Policy* 2013; 52: 85-102. DOI:10.1016/j.enpol.2012.08.040
8. Lannon S, Georgakaki A, Macdonald S. Modelling urban scale retrofit, pathways to 2050 low carbon residential building stock. In: 13th Conference of International Building Performance Simulation Association, Chambéry, France, 26-28 August 2013.
9. Barton J and Gammon R. The production of hydrogen fuel from renewable sources and its role in grid operations. *J. Power Sources* 2010; 195(24): 8222-8235. DOI:10.1016/j.jpowsour.2009.12.100
10. DECC. History of published versions of the 2050 Calculator, <http://2050-calculator-tool-wiki.decc.gov.uk/pages/140>. (2014, Accessed 16th July 2015).
11. National Environmental Research Council (NERC), British Atmospheric Data Centre. 2004, <http://badc.nerc.ac.uk/home/>. (2004, Accessed 3rd December 2004).
12. National Grid. Metered half-hourly electricity demands, <http://www.nationalgrid.com/uk/Electricity/Data/Demand+Data/> (2001, Accessed 2005).
13. DECC. *The future of heating: Meeting the challenge*, Evidence annex. Report, [https://www.gov.uk/government/uploads/system/uploads/attachment\\_data/file/190151/16\\_04\\_DECC-The\\_Future\\_of\\_Heating-Evidence\\_Annex\\_ACCESSIBLE.pdf](https://www.gov.uk/government/uploads/system/uploads/attachment_data/file/190151/16_04_DECC-The_Future_of_Heating-Evidence_Annex_ACCESSIBLE.pdf) (2013, Accessed 2015).
14. Acha S, Green T, Shah N. Optimal charging strategies of electric vehicles in the UK power market. In: IEEE PES Innovative Smart Grid Technologies Conference, Hilton Anaheim, CA, USA; 17th to 19th January 2011,



<http://ieeexplore.ieee.org/stamp/stamp.jsp?tp=&arnumber=5759128> and  
[https://workspace.imperial.ac.uk/urbanenergysystems/Public/Acha\\_ISGT\\_2011.pdf](https://workspace.imperial.ac.uk/urbanenergysystems/Public/Acha_ISGT_2011.pdf) (2011, Accessed 2015).

15. Huang S and Infield DG. The potential of domestic electric vehicles to contribute to power system operation through vehicle to grid technology. In: Proceedings of the 44th International Universities Power Engineering Conference, University of Strathclyde, Glasgow; 1st to 4th September 2009, <https://www.upec2009.org/content/node/285> (2009, Accessed 2015).
16. Committee on Climate Change. *Energy prices and bills - impacts of meeting carbon budgets*. Report, December 2014.  
<http://www.theccc.org.uk/publication/energy-prices-and-bills-impacts-of-meeting-carbon-budgets-2014/>; (Accessed 2015).
17. Ofgem - Smart Metering Team. *Smart Metering - Functional Requirements Catalogue*. Report no. URN:11D/680, 30<sup>th</sup> March 2011,  
<http://www.ofgem.gov.uk/e-serve/sm/Documentation/Documents1/Functional%20Requirements%20Catalogue.pdf> (Accessed 19th September 2011).
18. Ofgem - Smart Metering Team. *Smart metering implementation programme: statement of design requirements*. Report no. 94b/10, 27th July 2010  
<http://www.ofgem.gov.uk/e-serve/sm/Documentation/Documents1/Smart%20metering%20-%20Statement%20of%20Design%20Requirements.pdf> (Accessed 5th September 2011).

19. Energy Efficiency News. UK to roll out smart meters to all households by 2020, <http://www.energyefficiencynews.com/i/1532/>; (30th October 2008, Accessed 5th September 2011).
20. Towards a smarter future: Government response to the consultation on electricity and gas smart metering, DECC, [http://www.decc.gov.uk/en/content/cms/consultations/smart\\_metering/smart\\_metering.aspx](http://www.decc.gov.uk/en/content/cms/consultations/smart_metering/smart_metering.aspx); (December 2009, Accessed 2011).
21. MacKay DJC. *Sustainable Energy - without the hot air*. Cambridge, UK: UIT Cambridge Ltd; 2008.
22. Day G, Foote P, McCloy D, et al. *Scotland Wind Power and Pumped Hydro Potential*. Available at: [http://www.esru.strath.ac.uk/EandE/Web\\_sites/03-04/wind/content/storage%20available.html](http://www.esru.strath.ac.uk/EandE/Web_sites/03-04/wind/content/storage%20available.html); (2009, Accessed 26<sup>th</sup> October 2016).
23. McKenna EJ and Thomson M. Impact of wind curtailment and storage on the Irish power system 2020 renewable electricity targets: A free open-source electricity system balancing and market (ESBM) model. In 3rd Renewable Power Generation Conference (RPG 2014), 24-25 September 2014, pp.1-6. [http://ieeexplore.ieee.org/xpls/abs\\_all.jsp?arnumber=6993238&tag=1](http://ieeexplore.ieee.org/xpls/abs_all.jsp?arnumber=6993238&tag=1);  
DOI:10.1049/cp.2014.0845
24. Eirgrid and SONI. *2012 Curtailment Report*, 2013. [http://www.soni.ltd.uk/media/documents/operations/renewables/2012\\_curtailment\\_report.pdf](http://www.soni.ltd.uk/media/documents/operations/renewables/2012_curtailment_report.pdf); (2013, Accessed 11th February 2016).
25. Mc Garrigle EV, Deane JP and Leahy PG. How much wind energy will be curtailed on the 2020 Irish power system? *Renew. Energ.* 2013; 55: 544-553.

26. McKenna E, Grünewald P and Thomson M. Going with the wind: temporal characteristics of potential wind curtailment in Ireland in 2020 and opportunities for demand response. IET Renewable Power Gener. 2015; 9: 66-77.
27. Sinden G. Characteristics of the UK wind resource: long-term patterns and relationship to electricity demand. Energ. Policy 2007; 35(1):112-127.  
doi:10.1016/j.enpol.2005.10.003
28. 4eco Limited. Immersun. <https://www.immersun.co.uk/> (Accessed 15th April 2016).
29. Cool Power Products. Cool Power Products, Smart Sustainable Energy.  
<http://coolpowerproducts.com/home>. (Accessed 15th April 2016).
30. Parra D, Walker GS and Gillott M. Are batteries the optimum PV-coupled energy storage for dwellings? Techno-economic comparison with hot water tanks in the UK. Energy Build. 2016; 116: 614-621.  
DOI:10.1016/j.enbuild.2016.01.039
31. Andersson S, Elofsson AK, Galus MD et al. Plug-in hybrid electric vehicles as regulating power providers: Case studies of Sweden and Germany. Energ. Policy 2010; 38 (6): 2751-2762. DOI:10.1016/j.enpol.2010.01.006
32. Hydrogenics. Power-To-Gas: Bridging the Power Grid and Natural Gas System, <http://www.hydrogenics.com/hydrogen-products-solutions/energy-storage-fueling-solutions/power-to-gas>. (2013, Accessed 15th April 2016).
33. ITM Power. Power-To-Gas Energy Storage, <http://www.itm-power.com/sectors/power-to-gas-energy-storage>. (2016, Accessed 15th April 2016).

34. Palmer E. Audi creates green 'e-diesel fuel of the future' using just carbon dioxide and water. International Business Times, 27th April 2015.
35. UK Met Office. Marine Automatic Weather Station (MAWS) Network. 2016; Available at: <http://www.metoffice.gov.uk/public/weather/marine-observations/#?tab=marineObsMap&marineLocId=162091> (Accessed 1<sup>st</sup> August 2005).
36. UK Met Office. Hadley Centre Central England Temperature (HadCET) dataset; Available at: <http://hadobs.metoffice.com/hadcet/>. (Accessed 2009)
37. Day T. Degree-days: theory and application. 2006 September 2006; Report no. TM41, September 2006. London: The Chartered Institution of Building Services Engineers (CIBSE).  
<http://www.degree-days-for-free.co.uk/pdf/TM41.pdf> (Accessed 20<sup>th</sup> October 2016)
38. Dolman M, Walker I, Wright A, et al. Demand side response in the non-domestic sector. Final report for Ofgem, July 2012. <http://www.element-energy.co.uk/wordpress/wp-content/uploads/2012/07/Demand-Side-Response-in-the-non-domestic-sector.pdf> (Accessed 20<sup>th</sup> October 2016)
39. DECC. *Energy consumption in the United Kingdom (ECUK)*. Report no. URN: 13D/165, 2013. London: DECC, BEIS.  
<https://www.gov.uk/government/collections/energy-consumption-in-the-uk#documents> (Accessed 20<sup>th</sup> October 2016)
40. Elexon Ltd. *Electricity user load profiles by profile class*. 1997. UKERC.  
<http://data.ukedc.rl.ac.uk/browse/edc/Electricity/LoadProfile/data> (Accessed 1st September 2011).

41. Woods P, Dickson J. The contribution CHP can make to energy efficiency in buildings. In: *Energy Efficiency in Buildings IMechE Seminar*, (Parsons Brinckerhoff Ltd – Energy Services Division and Combined Heat and Power Association), 23rd March 2004.
- [http://www.chpa.co.uk/news/news\\_downloads/2005/040221-IMechE%20paper%20-%20paul%20woods-final.pdf](http://www.chpa.co.uk/news/news_downloads/2005/040221-IMechE%20paper%20-%20paul%20woods-final.pdf) (Accessed 1<sup>st</sup> October 2009).
42. Knight I, Kreutzer N, Manning M, et al. European and Canadian non-HVAC electric and DHW load profiles for use in simulating the performance of residential cogeneration systems. Report no. M154-12/2007E:1-72, May 2007. Series: Annex 42 of the International Energy Agency. [http://cogen-sim.net/index.php?pg=&download=Annex\\_42\\_Subtask\\_A\\_Final\\_Report\\_on\\_Domestic\\_Energy\\_Profiles.pdf](http://cogen-sim.net/index.php?pg=&download=Annex_42_Subtask_A_Final_Report_on_Domestic_Energy_Profiles.pdf) (Accessed 1<sup>st</sup> October 2009)
43. Hesmondhalgh, S. What can demand modelling tell you about electricity demand in the near future? In: *GB electricity demand - realising the resource. Workshop report*, Royal Society, 6-9 Carlton House Terrace, London, 16th May 2013. Brattle Group.
- <http://www.sustainabilityfirst.org.uk/images/publications/gbelec/UKERC%20-%20GB%20Electricity%20Demand%20Workshop%20-%20UKERC%20Report%20-%202016%20May%202013.pdf> (Accessed 20<sup>th</sup> October 2016).

## Appendix: Description of Input Data Used by FESA

### A1. Table of Annual Time Series Data Used in FESA

The following inputs to FESA use one year of data as hourly averages.

Name	Description and Origin of Data	
Total electricity demand	National Grid data (12) from year 2001 measured as half-hour averages and aggregated to hourly averages.	
Offshore wind power	Wind speed data (11) from many coastal sites in 2001 as proxy for offshore, extrapolated to typical offshore hub height and put through a typical turbine power curve	
Onshore wind power	Wind speed data (11) from many sites in 2001, extrapolated to typical onshore hub height and put through a typical turbine power curve	
Normalised solar power	Solar global irradiance data (11) from many sites in 2001, divided by 1000W/m <sup>2</sup>	
Wave power	Power assumed proportional to hourly average wave height at 6 sites of the West coast of Great Britain, (35).	
Tidal stream	4 stream cycles per 24.84 hours combined with a 29.53 day cycle of spring and neap tides representing one site off the UK coast.	
Tidal barrage	2 cycles per 24.84 hours (ebb generation only) combined with a 29.53 day cycle of spring and neap tides representing one site on the UK coast.	
Ambient Temperatures	Hourly measurements at the Rutherford Appleton Laboratory, (11) but normalised using the Central England Temperature Record of daily averages (36).	
Smoothed temperatures	Ambient temperatures averaged over the previous 24 hours to represent temperatures as experienced by buildings with large thermal masses.	
Degree-hours of heating or cooling	Differences between the smoothed temperatures and thresholds of temperature below which / above which heating or cooling is required proportional to that difference. Some threshold temperatures are based on empirical evidence, others on published data or from the DECC 2050 calculator.	
	<b>No-heat/cooling temperature</b>	<b>Origin and description</b>
	Domestic no-heat in 2001: 15.5°C	Value used by tradition and convention, CIBSE (37). To subtract off the correct amount of domestic resistive heating from

		the demand data
	Domestic no-heat in other years	Changes with year. Calculated from incidental heat gains and internal temperatures from the DECC 2050 Calculator (10).
	Commercial no-heat temperature in all years, 14.5°C	Empirically set to give the correct balance of heating by season, (38).
	Commercial no-cool temperature in all years, 4°C	Empirically set to give the correct balance of cooling by season (38).
Domestic electric space heating in 2001	<p>Using the domestic no-heat temperature above for year 2001, smoothed ambient temperatures and the 'Economy-7' daily profile for space heating below, the resulting hourly demand is scaled to give the annual total resistive heating of the ECUK database (39) assuming that almost all domestic electric heating was used under an economy-7 tariff in 2001.</p> <p>This was subtracted off total electricity demand to give electricity demand in 2001 excluding space heating (and excluding electric vehicle charging).</p>	
Domestic electric water heating in 2001	<p>Using the 'Economy-7' daily profile for water heating below, the resulting hourly demand is scaled to give the annual total resistive water heating of the ECUK database (39) assuming that almost all domestic electric heating was used under an economy-7 tariff in 2001.</p> <p>This was subtracted off total electricity demand to give electricity demand in excluding domestic space heating and excluding domestic water heating.</p>	
Total domestic space heating demand	Degree-hours of space heating based on smoothed ambient temperatures of the previous 24 hours, including variable no-heat temperature and global warming changes to ambient temperature as specified in the DECC 2050 Calculator.	
Commercial electric water heating in 2001	<p>Using the general commercial daily profile for energy demand below, the resulting hourly demand is scaled to give the annual total electric water heating demand in commercial buildings (heat pumps plus resistive) of the ECUK database (39).</p> <p>This was subtracted off electricity demand to give electricity demand excluding commercial water heating.</p>	
Commercial electric space heating in 2001	Using the general commercial daily profile for energy demand below, multiplied by the commercial degree-hours of space heating, the resulting hourly demand is scaled to give the annual total electric space heating demand in commercial buildings (heat pumps plus resistive) of the ECUK database (39).	

	This was subtracted off total electricity demand to give electricity demand excluding commercial space heating.
Commercial electric space cooling in 2001	Using the general commercial daily profile for energy demand below, multiplied by the commercial degree-hours of space cooling, the resulting hourly demand is scaled to give the annual total electric space cooling demand in commercial buildings (heat pumps) of the ECUK database (39).  This was subtracted off total electricity demand to give electricity demand excluding commercial space cooling.

### ***A2. Table of Daily Profile Data Used in FESA***

The following inputs to FESA use 24 values, one for each hour of the day, repeated for every day of the year.

Name	Description and Origin of Data
Hot water demand	Typical hot water demand profile for UK with a large morning peak and a smaller evening peak. Based mainly on unrestricted (single tariff) electricity profiles (40) but also very similar to data measured by Paul Woods (41) and consistent with International Energy Agency data, (42). The same profile is used for all days, week and weekend.
Electric Vehicle Charging	Approximately the inverse of transport demand profiles, (14) but with reduced demand in early evening. The same profile is used for all days, week and weekend.
Commercial demand profile	A daily demand profile with a broad peak in the middle of the day (43). The same profile is used for all days, week and weekend, and is an average of both week and weekend because they are very similar.
Domestic economy 7 hot water profile	Standard National Grid profile (40) from July (when space heating assumed not to be required). This electricity demand is mainly in the early hours of the morning.
Domestic economy 7 space heating profile	Standard National Grid profile from January (40) minus July, thus subtracting off the water heating. This electricity demand is mainly in the early hours of the morning.

### ***A3. Combinations of Annual Total Quantities with Annual Time Series and Daily Profiles***

Category of Electricity or	Annual Energy	Profile of Data
----------------------------	---------------	-----------------



<b>other Demand</b>		
Appliances and lighting	Total electricity demand of DECC 2050 Calculator excluding heating, cooling and electric vehicles	Great Britain hourly electricity demand from 2001 (12) after all domestic and commercial space heating, space cooling and water heating profiles have been subtracted off
Total Domestic space heating (thermal) demand	Total domestic space heating requirement of DECC 2050 Calculator	Domestic degree-hours of heating based on 24-hour smoothed ambient temperatures and no-heat temperatures (37) including incidental heat gains and global warming.
Electricity for heat pumps for domestic space heating	The portion of space heating provided by heat pumps	As above
Total domestic hot water demand - solar	Total domestic water heating demand of DECC 2050 Calculator, subtracting the capped solar thermal contribution.	Daily profile of hot water demand as described in table A2 (large morning peak and a smaller evening peak, the same every day).
Electricity for domestic heat pumps for hot water	The portion of domestic hot water provided by heat pumps	As above
Electricity for domestic resistive hot water	The portion of domestic hot water provided by resistive heating	Same as resistive domestic hot water in 2001 (economy-7) (40), a small sector reducing year by year.
Electricity for domestic resistive space heating	The portion of domestic space heating provided by resistive heating	Same as resistive domestic space heating in 2001 (Economy-7) (40), using degree-hours of heating from 2001, a small sector, reducing year by year
Domestic boiler heat	Total of heat from 4 types of boiler: Old gas, new gas, oil and solid fuel	Sum of domestic space heating and domestic water heating profiles (with solar heat subtracted)
Commercial hot water demand	Annual commercial hot water demand	Commercial energy demand (43)
Commercial	Annual commercial space	Commercial space heating

space heating	heating demand	profile: A combination of commercial daily profile (43) and commercial degree-hours of heating in each day
Commercial and domestic space cooling	Annual commercial space cooling demand plus annual domestic space cooling demand	Commercial space cooling profile: A combination of commercial daily profile (43) and commercial degree-hours of cooling (domestic uses the same because cooling is needed mainly during the daytime and because domestic space cooling remains small)
Total electricity for commercial heating and cooling plus domestic cooling	Sum of annual electricity used in commercial heat pumps and air conditioning (domestic and commercial) plus the extra electricity used in district heating systems	Sum of weighted commercial space cooling, commercial water heating, commercial space cooling and domestic space cooling profiles
Commercial boiler heat	Total of heat from 4 types of boiler: Old gas, new gas, oil and solid fuel	Sum of commercial space heating and commercial water heating profiles
Electricity for Cars	Electricity for Electric vehicle charging	Daily electric vehicle charging profile
Electricity for hydrogen production	Portion of hydrogen for transport that is supplied by electrolysis, divided by electrolyser efficiency	A flat profile as assumed in the DECC 2050 Calculator

#### ***A4. DECC 2050 Calculator Version 3.4.6 - Quantities Used as Inputs to FESA***

<b>DECC Worksheet</b>	<b>Cells</b>	<b>Annual Quantity</b>	<b>Use in FESA</b>
Petroleum refineries XV.a	Line 133	Refinery own use, TWh	Total liquid fuel uses
Industrial processes XI.a	Line 242	Industrial uses of oil, TWh	Total liquid fuel uses
Offshore wind III.a.2	Line 117	Offshore wind electricity, TWh	Offshore wind electricity
Offshore wind III.a.1	Line 97	Onshore wind electricity, TWh	Onshore wind electricity
Solar photovoltaics IV.a	Line 71	Solar PV electricity, TWh	Solar PV electricity
Tidal and wave III.c	Line 156	Wave powered electricity, TWh	Wave powered electricity

Tidal and wave III.c	Line 164	Tidal stream electricity, TWh	Tidal stream electricity
Tidal and wave III.c	Line 172	Tidal range electricity, TWh	Tidal barrage electricity
Geothermal electricity III.d	Line 68	Geothermal generating capacity, GW	Geothermal generating capacity
Geothermal electricity III.d	Line 69	Geothermal availability, %	Annual geothermal electricity and constant power, GW
Nuclear Power II.a	Line 130	Nuclear electricity, actual supplied, TWh	Nuclear electricity supplied to grid
Nuclear Power II.a	Line 122	Nuclear installed electrical generating capacity, GW	Nuclear installed capacity
Storage, demand shifting, interconnection, VII.c	Line 167	Nuclear power winter availability factor	Maximum available nuclear power
Hydroelectric power stations, III.b	Line 75	Hydroelectric installed capacity, GW	Maximum available hydroelectric power
Hydroelectric power stations, III.b	Line 76	Hydroelectric average capacity factor	Average hydroelectric electricity to grid
Domestic passenger transport, XII.a	Line 763	Liquid hydrocarbons for domestic aviation, TWh	Total liquid fuel uses
Domestic freight, XII.b	Line 375	Liquid hydrocarbons for national navigation, TWh	Total liquid fuel uses
International aviation, XII.c	Line 106	Liquid hydrocarbons for international aviation, TWh	Total liquid fuel uses
International shipping, XII.e	Line 95	Liquid hydrocarbons for shipping, TWh	Total liquid fuel uses
Domestic freight, XII.b	Line 360	Liquid hydrocarbons for road freight, TWh	Total liquid fuel uses
Domestic passenger transport, XII.a	Line 745	Liquid hydrocarbons for road passenger transport, TWh	Total liquid fuel uses
Domestic freight, XII.b	Line 368	Liquid hydrocarbons for rail freight, TWh	Total liquid fuel uses
Domestic passenger transport, XII.a	Line 754	Liquid hydrocarbons for rail passenger transport, TWh	Total liquid fuel uses
Domestic passenger transport, XII.a	Line 152	Electricity per mile, TWh/bn km (kWh/km)	Total miles powered by electricity
Domestic freight, XII.b	Line 228	Electricity for road freight, TWh	Electricity for road transport
Domestic passenger transport, XII.a	Line 746	Electricity for road passenger transport, TWh	Electricity for road transport

Storage, demand shifting, interconnection, VII.c	Line 245	Shifting demand from electric vehicles, GW	Loads that can be time-shifted for grid balancing
Domestic passenger transport, XII.a	Line 755	Electricity for rail passenger transport, TWh	Electricity for rail transport
Domestic freight, XII.b	Line 367	Electricity for rail freight transport, TWh	Electricity for rail transport
Hydrogen production for transport, VIII.a	Line 116	Hydrogen required for transport, TWh	Hydrogen required for transport
Domestic passenger transport, XII.a	Line 159	Hydrogen per mile, TWh/bn km (kWh/km)	Order-of-magnitude checks
Solar Thermal, IV.b	Line 62	Number of households	Number of roofs with solar water heating
Domestic space heating and hot water, IX.a	Lines 109 to 112	Average external temperatures in each season, °C	External temperature rise due to climate change
Domestic space heating and hot water, IX.a	Line 822	Incidental heat gains in homes, Joules/home	The “no-heat” temperature above which space heating is not required.
Domestic space heating and hot water, IX.a	Line 71	Heat loss rate per home, W/°C/home	The “no-heat” temperature.
Domestic space heating and hot water, IX.a	Line 44	Average internal temperature of homes	The “no-heat” temperature.
Domestic space heating and hot water, IX.a	Lines 1173 and 1174	CHP electricity to end user and to grid respectively, TWh	Electricity from CHP
Domestic space heating and hot water, IX.a	Line 1181	CHP heating and cooling, TWh	Domestic heat from CHP
Domestic space heating and hot water, IX.a	Line 1175	Solid fuel used by CHP, TWh	Solid fuel used
Domestic space heating and hot water, IX.a	Line 1176	Liquid fuel used by CHP, TWh	Liquid fuel used
Domestic space heating and hot water, IX.a	Line 1177	Gaseous fuel used by CHP, TWh	Natural gas used
Domestic space heating and hot water, IX.a	Line 835	Electricity used for domestic resistive space heating, TWh	Electricity used for domestic resistive space heating
Domestic space heating and hot water, IX.a	Line 765	Electricity used for domestic resistive water heating, TWh	Electricity used for domestic resistive water heating
Domestic space	Lines 840	Domestic space heat	Electricity used in

heating and hot water, IX.a	and 841	from air-source and ground-source heat pumps respectively, TWh	domestic heat pumps for space heating. COPs assumed from Calculator Wiki pages, 3:1 for air-source and 4:1 for ground-source
Domestic space heating and hot water, IX.a	Lines 770 and 771	Domestic water heat from air-source and ground-source heat pumps respectively, TWh	Electricity used in domestic heat pumps for water heating. COPs assumed from Calculator Wiki pages, 2:1 for air-source and 3:1 for ground-source
Domestic space heating and hot water, IX.a	Line 1195	Environmental heat gathered (by heat pumps)	Checking that energy adds up
Domestic space heating and hot water, IX.a	Lines 763 and 833	Domestic heat from old gas boilers to water heating and space heating respectively, TWh	Total fuelled heat supply (not directly needed until fuel switching is used for grid-balancing)
Domestic space heating and hot water, IX.a	Lines 764 and 834	Domestic heat from new gas boilers to water heating and space heating respectively, TWh	Total fuelled heat supply (not directly needed until fuel switching is used for grid-balancing)
Domestic space heating and hot water, IX.a	Lines 766 and 836	Domestic heat from oil fired boilers to water heating and space heating respectively, TWh	Total fuelled heat supply (not directly needed until fuel switching is used for grid-balancing)
Domestic space heating and hot water, IX.a	Lines 767 and 837	Domestic heat from solid fuelled boilers to water heating and space heating respectively, TWh	Total fuelled heat supply (not directly needed until fuel switching is used for grid-balancing)
Domestic space heating and hot water, IX.a	Line 1161	Solid fuel used in domestic boilers, TWh	Total solid fuel used
Domestic space heating and hot water, IX.a	Line 1162	Liquid fuel used in domestic boilers, TWh	Total liquid fuel used
Domestic space heating and hot water, IX.a	Line 1163	Gaseous fuel used in domestic boilers, TWh	Total natural gas used
Domestic space heating and hot water, IX.a	Line 755	Total domestic hot water demand, TWh	Total water heating demand, and maximum that can be displaced by solar thermal heat

Domestic space heating and hot water, IX.a	Line 828	Total domestic space heating demand, TWh	Total space heating demand
Domestic space heating and hot water, IX.a	Line 886	Total domestic space cooling demand, TWh	Total space cooling demand
Commercial heating and cooling, IX.c	Lines 719 and 720	CHP electricity to end user and to grid respectively, TWh	Electricity from CHP
Commercial heating and cooling, IX.c	Line 726	CHP heating and cooling, TWh	Domestic heat from CHP
Commercial heating and cooling, IX.c	Line 721	Solid fuel used by CHP, TWh	Solid fuel used
Commercial heating and cooling, IX.c	Line 722	Liquid fuel used by CHP, TWh	Liquid fuel used
Commercial heating and cooling, IX.c	Line 723	Gaseous fuel used by CHP, TWh	Natural gas used
Commercial heating and cooling, IX.c	Line 705	Electricity used in commercial heating and cooling	Electricity used in commercial buildings
District heating demand XVII.a	Line 49	Electricity used in district heating, TWh	An addition to commercial electricity
Commercial heating and cooling, IX.c	Line 739	Environmental heat gathered (by heat pumps)	Checking that energy adds up
Commercial heating and cooling, IX.c	Lines 350 and 382	Commercial heat from old gas boilers to water heating and space heating respectively, TWh	Total fuelled heat supply (not directly needed until fuel switching is used for grid-balancing)
Commercial heating and cooling, IX.c	Lines 351 and 383	Commercial heat from new gas boilers to water heating and space heating respectively, TWh	Total fuelled heat supply (not directly needed until fuel switching is used for grid-balancing)
Commercial heating and cooling, IX.c	Lines 353 and 385	Commercial heat from oil fired boilers to water heating and space heating respectively, TWh	Total fuelled heat supply (not directly needed until fuel switching is used for grid-balancing)
Commercial heating and cooling, IX.c	Lines 354 and 386	Commercial heat from coal fired boilers to water heating and space heating respectively, TWh	Total fuelled heat supply (not directly needed until fuel switching is used for grid-balancing)
Commercial heating and cooling, IX.c	Line 707	Solid fuel used in commercial boilers, TWh	Total solid fuel used
Commercial heating	Line 708	Liquid fuel used in	Total liquid fuel used

and cooling, IX.c		commercial boilers, TWh	
Commercial heating and cooling, IX.c	Line 709	Gaseous fuel used in commercial boilers, TWh	Total natural gas used
Commercial heating and cooling, IX.c	Line 363	Total commercial hot water demand, TWh	Total water heating demand
Commercial heating and cooling, IX.c	Line 395	Total commercial space heating demand, TWh	Total space heating demand
Commercial heating and cooling, IX.c	Line 418	Total commercial space cooling demand, TWh	Total space cooling demand
Solar thermal, IV.b	Line 76	Number of dwellings with solar thermal	Solar hot water power
Domestic Lighting and appliances, X.a	Line 132	Gas used in cooking & appliances, TWh	Natural gas used for cooking & appliances
Domestic Lighting and appliances, X.a	Line 118	Electricity used in cooking, TWh	Electricity used for cooking
Commercial Lighting and appliances, X.b	Line 155	Gas used in cooking & appliances, TWh	Natural gas used for cooking & appliances
Commercial Lighting and appliances, X.b	Line 104	Electricity used in cooking, TWh	Electricity used for cooking
Domestic Lighting and appliances, X.a	Line 131	Domestic electricity for appliances, TWh	Electricity used in domestic appliances
Solar thermal, IV.b	Line 76	Electricity used for solar thermal pumping	Electricity used in domestic appliances
Commercial Lighting and appliances, X.b	Line 115	Commercial electricity for appliances, TWh	Commercial electricity use
Industrial processes, XI.a	Line 240	Electricity used, TWh	Electricity used by industry
Petroleum refineries, XV.a	Line 132	Electricity used, TWh	Electricity used by industry
Indigenous fossil fuel production XV.b	Line 208	Electricity used, TWh	Electricity used by industry
Agriculture, VI.a	Line 536	Electricity used, TWh	Electricity used by agriculture
Electricity grid distribution, VII.b	Line 117	Distribution losses and own use, TWh	Distribution losses and own use
Electricity storage, demand shifting, interconnection, VII.c	Line 434	Distribution losses and own use, TWh	Storage losses and own use
Geosequestration (CCS), XIV.a	Line 168	Electricity used, TWh	Electricity used for Geosequestration
Electricity imports, VII.a	Line 20	Interconnector capacity, GW	Interconnector export capacity
Electricity storage, demand shifting, interconnection, VII.c	Line 244	Power capacity from interconnection, GW	Interconnector import capacity

Electricity imports, VII.a	Line 120	Imported electricity, TWh	Planned (routine) electricity imports
Electricity storage, demand shifting, interconnection, VII.c	Line 246	Power capacity from pumped storage, GW	Pumped storage capacity
Hydrogen production for transport, VIII.a	Line 119	Hydrogen from electrolysis, TWh	Electrolytic hydrogen for transport
Hydrogen production for transport, VIII.a	Line 139	Electrolyser power, GW	Electrolyser capacity
Hydrogen production for transport, VIII.a	Line 19	Electrolyser efficiency, %	Electrolyser efficiency
Biomass / coal power stations, I.a	Line 197	Biomass installed capacity, GW	Rated Biomass generating capacity
Biomass / coal power stations, I.a	Line 209	Implied load factor, %	Maximum biomass availability factor
Carbon capture and storage, I.b	Lines 217 and 218	Gas-fired generating capacity and CCS use respectively, GW	Rated generating capacity of CCGT with CCS
Electricity storage, demand shifting, interconnection, VII.c	Line 163	CCGT maximum availability factor, %	Maximum availability factor of CCGT with or without CCS
Carbon capture and storage, I.b	Lines 188 and 189	Post combustion CCS coal-fired generating capacity and CCS use respectively, GW	Rated generating capacity of coal with post-combustion CCS
Carbon capture and storage, I.b	Lines 203 and 204	Pre combustion CCS coal-fired generating capacity and CCS use respectively, GW	Rated generating capacity of coal with pre-combustion CCS
Electricity storage, demand shifting, interconnection, VII.c	Line 166	CCS maximum availability factor, %	Maximum availability factor of coal with CCS
Biomass / coal power stations, I.a	Line 281	Rated capacity of gas-fired generation, GW	Rated capacity of CCGT without CCS
Biomass / coal power stations, I.a	Line 196	Generating capacity of coal without CCS, GW	Generating capacity of coal without CCS
Electricity storage, demand shifting, interconnection, VII.c	Line 165	Coal without CCS maximum availability factor, %	Maximum availability factor of coal without CCS
Biomass / coal power stations, I.a	Line 279	Generating capacity of oil without CCS, GW	Generating capacity of oil without CCS
Electricity storage, demand shifting, interconnection, VII.c	Line 164	Oil-fired generation maximum availability factor, %	Maximum availability factor of oil-fired generation
Electricity storage, demand shifting, interconnection, VII.c	Line 390	Generating capacity of gas-fired OCGT without CCS, GW	Generating capacity of gas-fired OCGT without CCS
Electricity storage, demand shifting,	Line 153	gas-fired OCGT without CCS maximum	gas-fired OCGT maximum availability



interconnection, VII.c		availability factor, %	factor
Biomass / coal power stations, I.a	Lines 60 and 53	Thermal efficiency and self-use of gas CCGT	Overall efficiency of gas-fired CCGT
Biomass / coal power stations, I.a	Lines 58 and 51	Thermal efficiency and self-use of coal & biomass power, %	Overall efficiency of coal and biomass generation
Carbon capture and storage, I.b	Lines 56 and 70	Unabated efficiency and CCS / self-use load of CCGT CCS, %	Overall efficiency of CCGT with CCS
Carbon capture and storage, I.b	Lines 55 and 69	Unabated efficiency and CCS / self-use load of coal with pre-combustion CCS, %	Overall efficiency of coal with pre-combustion CCS
Carbon capture and storage, I.b	Lines 54 and 68	Unabated efficiency and CCS / self-use load of coal with post-combustion CCS, %	Overall efficiency of coal with post-combustion CCS
Biomass / coal power stations, I.a	Lines 59 and 52	Thermal efficiency and self-use of coal & biomass power, %	Overall efficiency of oil-fired generation
Electricity storage, demand shifting, interconnection, VII.c	Line 154	Thermal efficiency of gas-fired OCGT without CCS, %	Efficiency of gas OCGT power stations
Industrial processes XI.a	Line 241	Solid hydrocarbons used, TWh	Coal used in industry excluding electricity
Indigenous fossil fuel production XV.b	Line 146	Solid hydrocarbons in coal production, TWh	Self-use of coal by the coal industry
Agriculture, VI.a	Line 537	Solid hydrocarbons in agriculture, TWh	Coal used in agriculture
Agriculture, VI.a	Line 538	Liquid hydrocarbons in agriculture, TWh	Oil products used in agriculture
Industrial processes XI.a	Line 441	Gaseous hydrocarbons, TWh	Gas used in industry excluding electricity
Petroleum refineries, XV.a	Line 174 or line 134	Gaseous hydrocarbons, TWh	Natural gas used in refineries
Indigenous fossil fuel production XV.b	Line 210	Gaseous hydrocarbons, TWh	Natural gas used in fossil fuel extraction
Agriculture, VI.a	Line 436	Gaseous hydrocarbons, TWh	Natural gas used in agriculture
Hydrogen production for transport, VIII.a	Line 17	Efficiency of centralised steam methane reformation	Efficiency of SMR. Assume all SMR will be large scale.
Types of fuel from biomass, V.a	Line 241	Biomass to liquid fuel conversion efficiency	Not yet used in FESA
Types of fuel from biomass, V.a	Line 245	Biomass to gaseous fuel efficiency	Not yet used in FESA
Constants (Vector of emissions factors)	Cell D80	CO2 emissions of natural gas	Natural gas emissions rate
Constants (Vector of	Cell D79	CO2 emissions of oil	Liquid fuels emissions

emissions factors)		and oil products	rate
Constants (Vector of emissions factors)	Cell D78	CO2 emissions of coal and fossil waste	Solid fuels emissions rate
Carbon capture and storage, I.b	Line 82	Emissions reduction due to CCS, %	Capturable fraction of CO2 emissions from point sources
Indigenous fossil fuel production XV.b	Line 150	Oil production	UK oil production
Indigenous fossil fuel production XV.b	Line 151	Gas production	UK gas production
Indigenous fossil fuel production XV.b	Line 144	Coal production	UK coal production
Types of fuel from biomass, V.a	Line 385	Gaseous hydrocarbons, TWh	Gas produced from biomass
Types of fuel from biomass, V.a	Line 384	Liquid hydrocarbons	Liquid fuels produced from biomass
Bioenergy imports, V.b	Line 38	Liquid bioenergy imported, TWh	Imported liquid biofuel
Waste and recycling, VI.b	Line 529	Coal and fossil waste, TWh	Solid fuel from fossil and coal waste
Types of fuel from biomass, V.a	Line 383	Solid hydrocarbons, TWh	Solid from waste and energy crops
Bioenergy imports, V.b	Line 29	Imported bioenergy, TWh	Solid biomass imports