



## LJMU Research Online

**Filogonio, R, Assis, VB, Figueiredo Passos, L and Coutinho, ME**

**Distribution of populations of broad-snouted caiman (*Caiman latirostris*, Daudin 1802, Alligatoridae) in the São Francisco River basin, Brazil**

<http://researchonline.ljmu.ac.uk/id/eprint/10503/>

### Article

**Citation** (please note it is advisable to refer to the publisher's version if you intend to cite from this work)

**Filogonio, R, Assis, VB, Figueiredo Passos, L and Coutinho, ME (2010)  
Distribution of populations of broad-snouted caiman (*Caiman latirostris*,  
Daudin 1802, Alligatoridae) in the São Francisco River basin, Brazil.  
Brazilian Journal of Biology. 70 (4). pp. 961-968. ISSN 1519-6984**

LJMU has developed **LJMU Research Online** for users to access the research output of the University more effectively. Copyright © and Moral Rights for the papers on this site are retained by the individual authors and/or other copyright owners. Users may download and/or print one copy of any article(s) in LJMU Research Online to facilitate their private study or for non-commercial research. You may not engage in further distribution of the material or use it for any profit-making activities or any commercial gain.

The version presented here may differ from the published version or from the version of the record. Please see the repository URL above for details on accessing the published version and note that access may require a subscription.

For more information please contact [researchonline@ljmu.ac.uk](mailto:researchonline@ljmu.ac.uk)

<http://researchonline.ljmu.ac.uk/>

# Distribution of populations of broad-snouted caiman (*Caiman latirostris*, Daudin 1802, Alligatoridae) in the São Francisco River basin, Brazil

Filogonio, R.<sup>a\*</sup>, Assis, VB.<sup>a</sup>, Passos, LF.<sup>b</sup> and Coutinho, ME.<sup>c</sup>

<sup>a</sup>Programa das Nações Unidas para o Desenvolvimento – PNUD Consultant,  
Rua Congonhas, 245, São Pedro, CEP 30330-100, Belo Horizonte, MG, Brazil

<sup>b</sup>Departamento de Ciências Biológicas, Pontifícia Universidade Católica de Minas Gerais – PUC,  
Av. Dom José Gaspar, 500, Coração Eucarístico, CEP 30535-901, Belo Horizonte, MG, Brazil

<sup>c</sup>Centro Nacional de Pesquisa e Conservação de Répteis e Anfíbios – RAN/ICMBio,  
Embrapa, Al. Vilma Eldeweiss, 115, CEP 33400-000, Lagoa Santa, MG, Brazil

\*e-mail: renatofilogonio@gmail.com

Received July 20, 2009 – Accepted August 6, 2009 – Distributed November 30, 2010

(With 1 figure)

## Abstract

We surveyed populations of the broad-snouted caiman, *Caiman latirostris*, throughout the São Francisco River basin, from Três Marias reservoir, State of Minas Gerais, to the river delta, at the boarder of Sergipe and Alagoas states. We registered the occurrence of crocodylians in 61% of all surveyed localities (n = 64), in which the presence of *C. latirostris* was confirmed in 44% of the surveyed sites. Caimans occurred in both lentic and lotic habitats, although there was a preference for small dams, oxbow lakes and wetlands. Despite the hunting pressure and human impact on natural habitats, our results indicate that the populations of *C. latirostris* in the São Francisco basin are not fragmented.

**Keywords:** *Caiman latirostris*, São Francisco River basin, broad-snouted caiman, population distribution.

## Distribuição das populações de jacaré-do-papo-amarelo (*Caiman latirostris*, Daudin 1802, Alligatoridae) na bacia do Rio São Francisco, Brasil

### Resumo

Fizemos o levantamento de populações do jacaré-de-papo-amarelo, *Caiman latirostris*, ao longo da bacia do rio São Francisco, a partir do reservatório de Três Marias, no Estado de Minas Gerais, até a foz do rio, na divisa entre os Estados de Sergipe e Alagoas. Registramos a ocorrência de jacarés em 61% das localidades visitadas (n = 64), nas quais a presença de *C. latirostris* foi confirmada em 44% dos casos. Os jacarés ocorreram em ambientes lênticos e lóticos, muito embora tenhamos observado uma preferência por pequenas represas, lagoas marginais e áreas alagáveis. Apesar da pressão de caça e da modificação dos habitats naturais, nossos resultados são evidências de que as populações de *C. latirostris* ao longo da bacia do São Francisco não estão fragmentadas.

**Palavras-chave:** *Caiman latirostris*, bacia do rio São Francisco, jacaré-de-papo-amarelo, distribuição das populações.

### 1. Introduction

The broad-snouted caiman, *Caiman latirostris*, is a native species from Brazil, Argentina, Bolivia, Paraguay and Uruguay. It is distributed throughout the Paraná, Paraguay, São Francisco and Uruguay River basins (Borteiro et al., 2006), being the crocodylian with the southernmost distribution among neotropical species. The species distribution within Brazil ranges from the north-eastern state of Rio Grande do Norte reaching the south of the Rio Grande do Sul state (Verdade and Piña, 2006).

*Caiman latirostris* was considered an endangered species in Brazil until 2003, when the species was withdrawn from the Brazilian List of Endangered Fauna (Martins, 2005). On the other hand, Brazilian populations are still listed in Appendix I of the Convention of International Trade of Endangered Species – CITES (Verdade, 1998). Few studies have dealt with the status or dynamics of Brazilian populations in the wild and most of them were conducted in the Paraná River basin or on the coastal south-eastern part of the species distribution range (e.g., Mourão and

Campos, 1995; Grigg et al., 1998; Verdade et al., 2002; Fusco-Costa et al., 2008). On the other hand, there has been considerable research effort focused on captivity animals (e.g., Verdade, 2004; Verdade and Santiago, 1992). The lack of information on wild populations imposes serious constraints to the development of broader conservation and management plans like those currently being carried out in Argentina, as reported by Larriera and Imhof (2006). Moreover, there are virtually no available data on natural populations of *C. latirostris* from the São Francisco River basin, which accounts for an extensive portion of the species distribution range (Verdade and Piña, 2006; Villela et al., 2008). The aim of our study was to evaluate the distribution pattern of wild populations of *C. latirostris* throughout the São Francisco River basin (SFB).

## 2. Materials and Methods

### 2.1. Study area

The SFB is an important Brazilian water resource, draining the states of Bahia (BA), Minas Gerais (MG), Pernambuco (PE), Alagoas (AL), Sergipe (SE), Goiás (GO) and Distrito Federal (DF). Human population estimates in the SFB reaches over 13 million people (ANA, 2005). Along its 2,863 km of extension (ANA, 2005), the river basin is divided into four sub-regions according to the prevailing biome, temperature and rainfall: the high and medium sub-region are primarily covered by the Cerrado biome, where the mean temperature and annual rainfall are 23 °C and 24 °C and 1372 mm and 1052 mm, respectively. The sub-medium presents a mean temperature of 27 °C and the annual rainfall drops to 693 mm, being covered mostly by the Caatinga biome. The Atlantic Forest covers the low sub-region and the mean temperature and annual rainfall are 25 °C and 957 mm, respectively (ANA, 2005; Mark, 1963). The biomes Cerrado and Atlantic Forest are considered hotspots, with high conservation priority (Myers et al., 2000). Natural and suitable artificial habitats for *C. latirostris* such as wetlands, oxbow lakes, small dams and reservoir are distributed throughout the basin.

Since the early Portuguese colonisation, the basin has been used intensively by human population, although there remain fragments of well preserved habitats along the river basin. Such intensive uses are associated with gallery forest deforestation and the erosion of its margins, intense irrigation and high number of hydroelectric power plants (SEPLANTEC, 2000). Hunting pressure on *C. latirostris* has also been reported. In the state of Alagoas, for example, the species is sold in local markets as salted fish meat, known as the “São Francisco codfish”, probably provided by local fishermen (Verdade, 2001). Recently, discussions about transposing waters from the São Francisco River to irrigate dry regions of the Brazilian Caatinga have drawn attention to the basin environmental issues.

In order to restore and minimise human impacts, since 2001, the Brazilian Federal Government has launched a revitalisation plan for the basin, which includes a broad evaluation of the status of the biotic components of the São Francisco basin (Andrade, 2002).

### 2.2. Survey methods

Survey sites were spread along the main river course, covering most of the SFB extension (see Figure 1). Population surveys started from the high sub-region, at Três Marias reservoir, State of Minas Gerais, reaching the river delta, in the municipality of Penedo, in the state of Alagoas. Surveys were conducted during two field trips, the first one was held from March to May 2006 and the second, from November to early December 2007. The search for caimans was made by night-light surveys using a 5 m open boat powered by a 25 hp outboard engine, at an average constant speed of 8 km/h. In many cases, however, when the locality was inaccessible with the boat, the surveys were conducted by walking at the margins of the water body. The searches usually started 20-30 minutes after sunset, around 7:00 PM, and ended around 11:00 PM. The caimans were located with a sealed-beam powered by a 12 V battery and headlights. Because another caiman species, *Paleosuchus palpebrosus* (Cuvier, 1807), occurs in the SFB (Campos et al., 1995), we approached the individuals in order to identify the species. We also interviewed local people to evaluate whether or not caimans occur in the area.

Our surveys included the main channel of the São Francisco River and its tributaries as well as oxbow lakes, dams and wetlands. Each surveyed site was georeferenced and characterised according to the hydrography, vegetation type and human impacts using a standard protocol developed specifically to attend the studies in the SFB. Site hydrography was classified as main river or small tributaries main channels, which were grouped as lotic environments, and dams, oxbow lakes and wetlands which were grouped as lentic environment. The prevailing vegetation type (Cerrado, Caatinga and Atlantic Forest) was noted, whereas human impacts were characterised observing the presence of pasture, monoculture, erosion, roads and urbanisation. To test the relationship between presence of caimans and human impact, we summed the number of respective impacts observed in each locality visited according to the categories cited above. The sites were then assigned with a specific rank of impact intensity, which ranges from 0 (when no impacts were observed) to 5 (when all the impacts listed were observed). The relationship between the occurrence of caimans, type of water body and human impact was tested using the  $\chi^2$  Pearson correlation statistic carried out with Systat (Wilkinson, 1998).

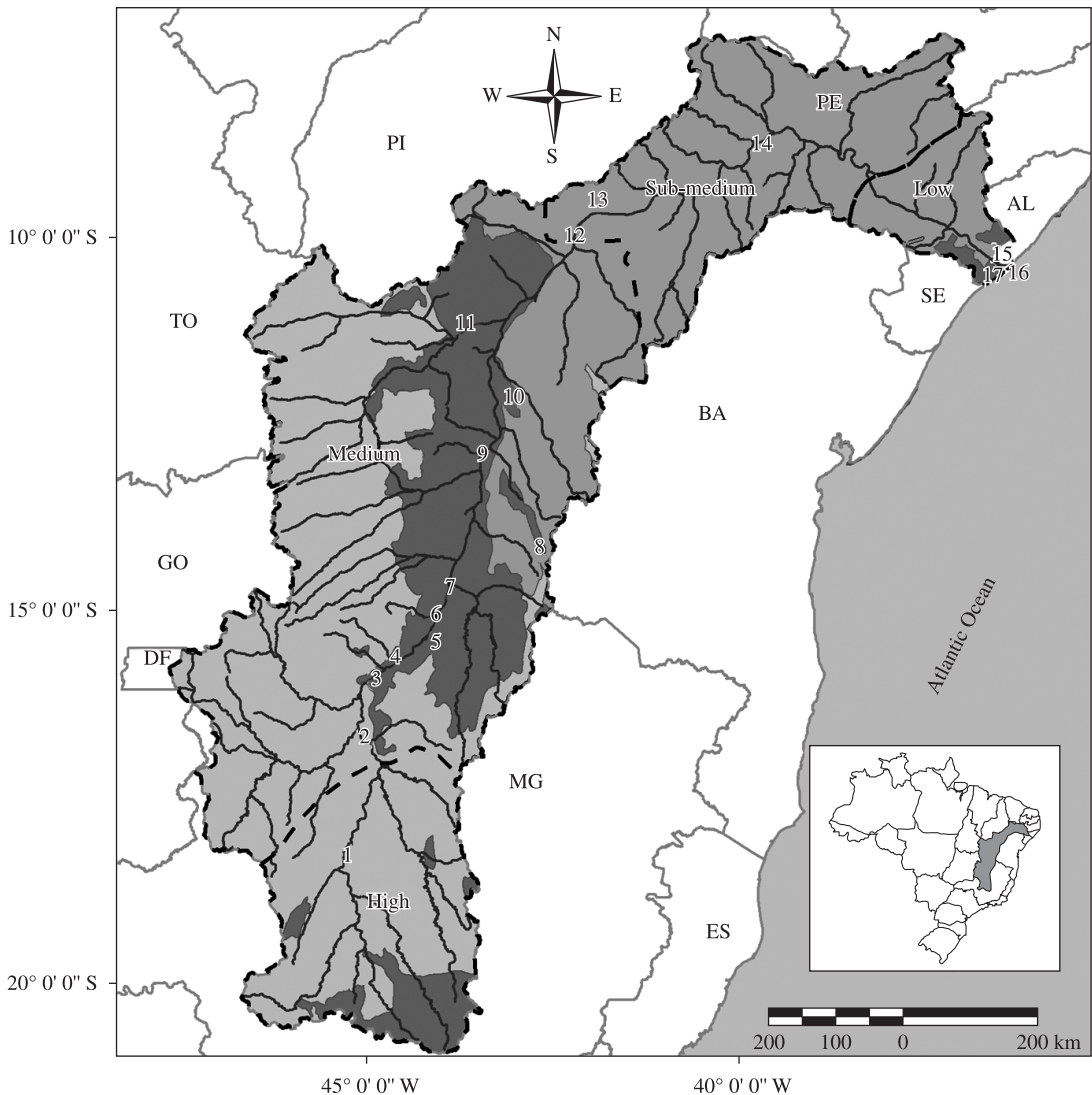
## 3. Results

We checked 64 localities for the presence of caimans over 17 municipalities along the SFB (see Figure 1).

With the exception of Pilão Arcado (BA), in which we registered the presence of caimans based on interviews, and Remanso (BA), in which we did not register the presence of caimans, we sighted caimans directly in all municipalities along the studied area ( $n = 15$ ). Caimans were present in 39 localities surveyed (61%) and were widely distributed along the river basin, occurring in all sub-regions, in the three biome types, Cerrado, Caatinga

and Atlantic Forest. *Caiman latirostris* was sighted directly in 28 localities (44%), and *Paleosuchus palpebrosus* was present in three different sites, whereas the other sightings corresponded to unidentified individuals (indicated as “Eyes only”, see Table 1).

Caimans were observed using both lotic and lentic environments. However, caimans were found more frequently in lentic environments, to which occurrence was positively



**Figure 1.** Map of the São Francisco River basin, Brazil, showing the municipalities visited during the 2006 and 2007 surveys. Spaced lines delimitate high, medium, sub-medium and low sub-regions. States are delimited by grey lines. The basin drains the states of Minas Gerais (MG), Bahia (BA), Pernambuco (PE), Alagoas (AL), Sergipe (SE), Goiás (GO) and Distrito Federal (DF). The Cerrado biome is represented by the region in light grey, the Caatinga biome, in medium grey, and the Atlantic Forest biome, in dark grey. Numbers represent the municipalities visited: 1 – Três Marias (MG); 2 – São Romão (MG); 3 – São Francisco (MG); 4 – Januária (MG); 5 – Itacarambi (MG); 6 – Pedras de Maria da Cruz (MG); 7 – Manga (MG); 8 – Guanambi (BA); 9 – Sítio do Mato (BA); 10 – Ibotirama (BA); 11 – Barra (BA); 12 – Pilão Arcado (BA); 13 – Remanso (BA); 14 – Santa Maria da Boa Vista (PE); 15 – Penedo (AL); 16 – Piaçabuçu (AL); 17 – Brejo Grande, (SE). Modified from “Plano decenal de recursos hídricos na bacia hidrográfica do Rio São Francisco (2004-2013)” (ANA, 2005).

related ( $\chi^2 = 2.5$ ,  $df = 1$ ,  $p = 0.01$ ). Therefore, caimans can use the São Francisco River main channel and its tributaries as dispersion routes, however, populations composed of individuals of all age/sizes occurred mainly in lentic environments. Most of the surveyed sites present some degree of human impact. Pasture was found in 46 surveyed localities (72%), followed by roads (25 localities; 39%), urbanisation (23 localities; 36%) and monocultures (20 localities; 31%; see Table 2). We expected to observe a negative relationship between impact intensity and the presence of caimans. However, no significant trend was found ( $\chi^2 = 7.5$ ,  $df = 5$ ,  $p = 0.19$ ), indicating that caimans are resistant to the impact measured in this study. We also confirmed hunting pressure in most of the visited sites, as many people claimed to be hunters themselves. People justified hunting caimans primarily for food acquisition. Many fishermen also killed caimans because caimans feed on the fishes attached to their fishing nets, which also destroy their nets. On one occasion, in the municipality of Ibotirama (BA), in the medium sub-region, local people showed us a *C. latirostris* skin of approximately 1.8 m total length. Because of the hunting pressure, spotlighted individuals were very wary, thus explaining the relatively high percentage (12%) of occasions in which attempts to approach and identify the species were frustrated.

**4. Discussion**

Based on our surveys we have demonstrated that *C. latirostris* is widely distributed throughout the SFB. Such distribution pattern is an indication that the populations within the river basin are not fragmented. The fact that we observed caimans in lotic habitats, and considering that river channels are important routes to crocodylian dispersal (Magnusson, 1979), we can predict a consistent genetic flux within the river basin. This is in agreement with the findings of Villela et al. (2008), who demonstrated that the genetic variations of *C. latirostris* are closely related to macrogeographic patterns of big river basins rather than geographic distance itself, and that genetic flux occurs even in large distances, say thousands of kilometres. Moreover, our findings are in agreement with those of Borteiro (2005), who also found *C. latirostris* widespread in Uruguay, occurring in 29 of the 36 localities surveyed (81% of the sampled areas).

We did not attempt to estimate population size. However, we observed a number of populations with low number of individuals, which were scattered distributed throughout the survey sites. Such pattern differs from that observed in other species of the same genus, such as the *Caiman crocodilus* in the Brazilian Amazonia (Da Silveira et al., 1997) and *Caiman yacare* in the Pantanal (Coutinho and Campos, 1996), which occur in habitats relatively free from human impacts, particularly when compared to the SFB. *Caiman latirostris* from the SFB occurred in preserved habitats as well as in habitats affected strongly by human occupation. In fact, we did find individuals in sewage and highly urbanized areas, showing that the species is rather resistant to human impacts and that habitat modification has limited effect on the species distribution. On the other hand, habitat modification seems to be more important to determine the small size of natural populations, rather than affecting the species distribution pattern. In this sense, current levels of hunting pressure seems to be playing a major role in reducing population size, but it does not seem to drive populations to local extinction. Certainly, hunting is affecting the wary behaviour of the caimans, as pointed out by a number of crocodylian studies (e.g., Ron et al., 1998).

*Caiman latirostris* is one of the Brazilian crocodylian species with the highest commercial value (Magnusson and Mourão, 1997). In the Amazon region, black caiman populations (*Melanosuchus niger*) were overexploited because of the value of its skin (Rebêlo and Magnusson, 1983). However, by means of protection measures and management programs, natural populations had recovered steadily and are currently included in Appendix II of CITES (RAN, 2007). The success of management efforts to recovering crocodylian populations have been reported worldwide (Thorbjarnarson, 1999). For instance, previous reports on the successful ranching program of *C. latirostris* in Argentina (Larriera and Imhof, 2006) show the potential for conservation through the sustainable use of wild populations. We expect that protecting suitable habitats of *C. latirostris* will probably lead to an increase in population growth rates, which, in turn, may make ranching programs feasible from both conservation and socioeconomic perspectives. Further efforts must be towards implementing such programs in the SFB, in order to protect wild populations of caimans and to promote the development of sociobiodiversity value chains in the region.

**Table 1.** Number of sites where caimans were observed by direct sighting and/or interview according to the localities and municipalities, during the 2006 and 2007 surveys in the São Francisco River basin, Brazil. Percentages were calculated in relation to the total number of water bodies surveyed.

Sites	Occurrence of caimans (%)	Type of observation		
		Direct sighting		Interview
		<i>C. latirostris</i>	Eyes only	
Localities (n = 64)	39 (61%)	28 (44%)	8 (12%)	3 (5%)
Municipalities (n = 17)	16 (94%)			

**Table 2.** Caimans registered by direct sighting and/or interview, according to the sites and habitats observed during the 2006 and 2007 surveys in the São Francisco River basin, Brazil.

Sub-region	Site		Presence of caimans			Habitat		
	Municipality	Locality	<i>Caiman latirostris</i>	Eyes only	Interview	Hydrography*	Vegetation	Human impact**
High	Três Marias (MG)	Pirapitinga Ecological Station	1	0	0	D	Cerrado	
Medium	São Romão (MG)	Grota da Onça	0	0	0	D	Cerrado	
		São Francisco River	0	0	0	RC	Cerrado	P
		Luciano Creek	0	0	0	RC	Cerrado	P
		Lake Desdém	1	0	0	OL	Cerrado	P
		Porto Dam	1	0	0	D	Cerrado	P, M
		Pichuá Dam	1	0	0	D	Cerrado	
		Vale das Aroeiras Farm's Dam	1	0	0	D	Cerrado	P
		Lake Paracatu	1	0	0	OL	Cerrado	P
		Lake Intam	0	0	0	OL	Cerrado	R
		Lake Carboroeto	1	0	0	OL	Cerrado	P
	São Francisco (MG)	São Francisco River	0	0	0	RC	Cerrado	P, U
		Lake Daniela	0	0	0	OL	Cerrado	P
		Lake Prata's Vereda	0	1	0	WET	Cerrado	P
		Lake Grande	1	0	0	OL	Cerrado	P, R, U
		Lake Piãozeiro	1	0	0	OL	Cerrado	P
		Lake Vaqueta	1	0	0	OL	Cerrado	P
		Lake Comprida	0	1	0	OL	Cerrado	P
Januária (MG)	Pandeiros River	1	0	0	RC	Cerrado	P	
	Mr. Pedro' Lake	1	0	0	OL	Cerrado	U	
	Itacarambi (MG)	São Francisco River	0	0	0	RC	Cerrado	P, E, U
		Cauê Farm's Lake - 1	0	0	0	D	Cerrado	P, U
	Cauê Farm's Lake - 2	0	0	0	OL	Cerrado	P	
	Jota Alves Farm' Lake	1	0	0	D	Cerrado	P, R, U	
	Lake Jatobá	1	0	0	D	Cerrado	R, U	
	Lake Azul	0	0	0	OL	Cerrado	R	
	Olaria's Lake	0	1	0	D	Cerrado	P, M, R	
	Pedras de Maria da Cruz (MG)	Cantagalo's Lake -1	0	1	0	D	Cerrado	P, R
Cantagalo's Lake -2		1	0	0	D	Cerrado	P, M, U	
Manga (MG)	Lake Prata	0	0	0	OL	Cerrado	P	
	Mata Seca Reserve's Lake - 2	0	1	0	WET	Cerrado	P, M, R	

\* Letters in the "Hydrography" column represent: D = Dam; OL = Oxbow lake; RC = River channels; WET = Wetlands. \*\* Letters in the "Human Impact" column represent: E = Erosion; M = Monoculture; P = Pasture; R = Roads; U = Urbanisation.

Table 2. Continued...

Sub-region	Site		Presence of caimans				Habitat		
	Municipality	Locality	Caiman <i>latirostris</i>	Eyes only	Interview	Hydrography*	Vegetation	Human impact**	
Medium	Guanambi (BA)	Highway BR-122	0	1	0	D	Caatinga	P, U, R	
		Sítio do Mato (BA)	São Francisco/Corrente River	1	0	0	RC	Caatinga	P, M, E
	Ibotirama (BA)	Lake Araçá	Lake Araçá	0	1	0	D	Caatinga	P
			Lake Papa	0	0	0	D	Caatinga	P
		Cachorro River	São Francisco River	0	0	0	RC	Caatinga	U, E
			Lake Comprida	1	0	0	OL	Caatinga	P
		Lake Serra	Lake Serra – 1	1	0	0	OL	Caatinga	P, U
			Lake Serra – 2	0	0	0	OL	Caatinga	P
			Lake Serra – 3	1	0	0	OL	Caatinga	P
		Highway BR-242	Highway BR-242	0	1	0	OL	Caatinga	U, R
			Barra (BA)	Lake Piranhas	1	0	0	OL	Caatinga
		Lake Golfo Grande River		1	0	0	OL	Caatinga	M, R, E
	Lake Timbó – 1	0		0	0	RC	Caatinga	P, M, E, R	
	Lake Timbó – 2	0		0	1	OL	Caatinga	P	
	Lake Lameiro	0		0	1	OL	Caatinga	P	
	Afonso’s Lake	0		0	0	OL	Caatinga	P, M, U, E	
	Catú Ceek	0		0	0	OL	Caatinga	P	
	Bonfim wetland	0		0	0	RC	Caatinga	P, M, E, U, R	
	Sub-Medium	Pilão Arcado (BA)	Tapera Creek	0	0	0	RC	Caatinga	
			Lake Peixe	0	0	0	OL	Caatinga	
Passagem’s Lakes		Poeirão	0	0	1	RC	Caatinga	E, U, R	
		Remanso Velho	0	0	0	OL	Caatinga	P, M, U, R	
Remanso (BA)		Remanso Velho	0	0	0	RC	Caatinga	P, M, E, U, R	
		Santa Maria da Boa Vista (PE)	São Francisco River	0	0	0	RC	Caatinga	U, R
Low		Penedo (AL)	Lake Barra	0	0	0	OL	Caatinga	M, R
			Igarapé da Barra	1	0	0	OL	Caatinga	M, R
		Lake Chaves	Lake Chaves	1	0	0	OL	Atlantic Forest	M, U, R
			Lake Uricuré – 1	1	0	0	OL	Atlantic Forest	P, M, E, U
	Lake Uricuré – 2	Lake Uricuré – 1	1	0	0	OL	Atlantic Forest	P	
		Lake Uricuré – 2	1	0	0	OL	Atlantic Forest	P	
Piaçabuçu (AL)	Pau-à-pique wetland	1	0	0	RC	Atlantic Forest	P, M, E, U, R		
Brejo Grande (SE)	São Francisco River	1	0	0	RC	Atlantic Forest	P, M, E, U, R		
	Lake Capivara	1	0	0	OL	Atlantic Forest	P, M, E, R		

\* Letters in the “Hydrography” column represent: D = Dam; OL = Oxbow lake; RC = River channels; WET = Wetlands. \*\* Letters in the “Human Impact” column represent: E = Erosion; M = Monoculture; P = Pasture; R = Roads; U = Urbanisation.

**Acknowledgements** — We are grateful to Gláucia M. Drummond, from the Biodiversitas Foundation, and to Vera Luz, from the Centre for Conservation and Management of Reptiles and Amphibians (RAN/ICMBio) for logistical and financial support. Alonso (Lourinho), Luiz Rondon (Zairo), Galinho and Thiago Santos assisted us in the field work. We are indebted to John Thorbjarnarson, Carlos Piña, Alejandro Larriera and Luciano M. Verdade, who critically read and commented on a first draft of the manuscript. Alfredo Palau helped with complementary information and Amanda Alves from the Biodiversitas Foundation contributed drawing figures and maps.

## References

- Agência Nacional de Águas - ANA, 2005. *Plano decenal de recursos hídricos na bacia hidrográfica do Rio São Francisco (2004-2013)*. Brasília: Ministério do Meio Ambiente. 142 p.
- ANDRADE, R., 2002. *Da transposição das águas do Rio São Francisco à revitalização da bacia: as várias visões de um rio*. São Paulo: Fórum Permanente de Defesa do Rio São Francisco/International Rivers Network/Coalizão Rios Vivos. 44 p.
- BORTEIRO, C., 2005. *Abundancia, estructura poblacional y dieta de yacarés (Caiman latirostris: Crocodylia, Alligatoridae) en ambientes antrópicos del departamento de Artigas, Uruguay*. Montevideo: Universidad de la República, 79 p. [Dissertação de Mestrado].
- BORTEIRO, C., PRIGIONI, C., GARCÍA, JE., TEDROS, M., GUTIÉRREZ, F. and KOLENC, F., 2006. Geographic distribution and conservation status of *Caiman latirostris* (Crocodylia, Alligatoridae) in Uruguay. *Phyllomedusa*, vol. 5, p. 97-108.
- CAMPOS, Z., COUTINHO, ME. and ABERCROMBIE, C., 1995. Size structure and sex ratio of dwarf caiman in the Serra do Amolar, Pantanal, Brazil. *Herpetological Journal*, vol. 5, p. 321-322.
- Centro de Conservação e Manejo de Répteis e Anfíbios - RAN, 2007. *A proposal to transfer the population of black caiman (Melanosuchus niger) of Brazil from appendix I to appendix II of CITES*. Available from: <www.cites.org/eng/cop/14/prop/E14-P13.pdf>. Access in: 04/06/2009.
- COUTINHO, ME. and CAMPOS, Z., 1996. Effect of habitat and seasonality on the densities of caiman in southern Pantanal, Brazil. *Journal of Tropical Ecology*, vol. 12, p. 741-747.
- DA SILVEIRA, R., MAGNUSSON, WE. and CAMPOS, Z., 1997. Monitoring the distribution, abundance and breeding areas of *Caiman crocodilus crocodilus* and *Melanosuchus niger* in the Anavilhanas archipelago, Central Amazonia, Brazil. *Journal of Herpetology*, vol. 31, p. 514-520.
- FUSCO-COSTA, R., CASTELLANI, TT. and TOMÁS, WM., 2008. Abundância e locais de ocorrência do jacaré-de-papo-amarelo (*Caiman latirostris*, Alligatoridae) no noroeste da Ilha de Santa Catarina, SC. *Biotemas*, vol. 21, p. 183-187.
- GRIGG, GC., BEARD, LA., MOULTON, T., MELO, MTQ. and TAPLIN, LE., 1998. Osmoregulation by the broad-snouted caiman, *Caiman latirostris*, in estuarine habitat in southern Brazil. *Journal of Comparative Physiology B. Biochemical, Systematic and Environmental Physiology*, vol. 168, p. 445-452.
- LARRIERA, A. and IMHOF, A., 2006. Proyecto Yacaré: cosecha de huevos para cría en granjas del género *Caiman* en Argentina. In BOLKOVIC, ML. and RAMADORI, D. *Manejo de fauna silvestre en Argentina. Programas de uso sustentable*. Buenos Aires: Dirección de Fauna Silvestre, Secretaría de Ambiente y Desarrollo Sustentable. p. 51-64.
- MAGNUSSON, WE. and MOURÃO, GM., 1997. Manejo extensivo de jacarés no Brasil. In VALLADERS-PÁDUA, C., BODMER, RE. and CULLEN Jr., L. (Orgs.). *Manejo e conservação da vida silvestre no Brasil*. Belém: Sociedade Civil Mamirauá. p. 214-221.
- MAGNUSSON, WE., 1979. Dispersal of hatchling crocodiles (*Crocodylus porosus*) (Reptilia, Crocodylidae). *Journal of Herpetology*, vol. 13, p. 227-231.
- MARK, R., 1963. Geologia e geografia física da bacia hidrográfica do Rio de Contas. No Estado da Bahia. *Boletim de Geografia Física*, vol. 5, p. 1-59.
- MARTINS, M., 2005. Répteis. In MACHADO, ABM., MARTINS, CS. and DRUMMOND, GM. (Eds.). *Lista da fauna brasileira ameaçada de extinção*. Belo Horizonte: Fundação Biodiversitas. 160 p.
- MOURÃO, G. and CAMPOS, Z., 1995. Survey of the broad-snouted caiman *Caiman latirostris*, marsh deer *Blastocercus dichotomus*, and capybara *Hydrochaeris hydrochaeris*, in the area to be inundated by Porto Primavera dam, Brazil. *Biological Conservation*, vol. 73, p. 27-31.
- MYERS, N., MITTERMEIER, RA., MITTERMEIER, CG., FONSECA, GAB. and KENT, J., 2000. Biodiversity hotspots for conservation priorities. *Nature*, vol. 403, no. 24, p. 853-858.
- REBÊLO, GH. and MAGNUSSON, WE., 1983. An analysis of the effect of hunting on *Caiman crocodilus* and *Melanosuchus niger* based on the sizes of confiscated skins. *Biological Conservation*, vol. 26, p. 95-104.
- RON, SR., VALLEJO, A. and ASANZA, E., 1998. Human influence on the wariness of *Melanosuchus niger* and *Caiman crocodilus* in Cuyabeno, Ecuador. *Journal of Herpetology*, vol. 32, p. 320-324.
- Secretaria do Planejamento, Ciência e Tecnologia - SEPLANTEC, 2000. Situação física e ambiental do rio São Francisco. In Secretaria do Planejamento do Estado da Bahia - SEPLAN. *Plano de fomento do vale do rio São Francisco*. Salvador: Governo do Estado da Bahia, p. 27-32.
- THORBJARNARSON, J., 1999. Crocodile tears and skins: International trade, economic constraints, and limits to the sustainable use of crocodylians. *Conservation Biology*, vol. 13, p. 465-470.
- VERDADE, LM. and PIÑA, CI., 2006. *Caiman latirostris*. *Catalog of the American Society of Amphibians and Reptiles*, vol. 833, p. 1-21.
- VERDADE, LM. and SANTIAGO, MEB., 1992. Status of captive population of broad-nosed caiman (*Caiman latirostris*) in Brazil. In *Crocodyles. Proceedings of the 11<sup>th</sup> Working Meeting of the Crocodile Specialist Group*. Gland: The World Conservation Union – IUCN. vol. 2, p. 218-225.
- VERDADE, LM., 1998. *Caiman latirostris*. In ROSS, JP. *Crocodyles Status Survey and Conservation Action Plan*. Gland: IUCN - The World Conservation Union. p. 18-20.
- . 2001. The São Francisco River 'codfish': the northernmost populations of the broad-snouted caiman (*Caiman latirostris*). *Crocodyle Specialist Group Newsletter*, vol. 20, p. 80-82.



-, 2004. A exploração da fauna silvestre no Brasil: jacarés, sistemas e recursos humanos. *Biota Neotropica*, vol. 4, p.12.

VERDADE, LM., ZUCOLOTO, RB. and COUTINHO, LL., 2002. Microgeographic variation in *Caiman latirostris*. *Journal of Experimental Zoology Part B: Molecular and Developmental Evolution*, vol. 294, p. 387-396.

VILLELA, PMS., COUTINHO, LL., PIÑA, CI. and VERDADE, LM., 2008. Macrogeographic Genetic Variation in Broad-Snouted Caiman (*Caiman latirostris*). *Journal of Experimental Zoology Part A: Ecological Genetics and Physiology*, vol. 309A, p. 628-636.

WILKINSON, L., 1998. *SYSTAT: The System for Statistics*. Evanston, IL, USA: SYSTAT.