

---

# Decision Support System of Teacher Performance Assessment with Smart Method

*by* Erni Murniarti

---

**Submission date:** 23-Mar-2020 12:55PM (UTC+0700)

**Submission ID:** 1280211809

**File name:** Conf\_Scopus\_Q\_3\_Penulis\_5\_\_2018\_Decision.pdf (917.58K)

**Word count:** 2822

**Character count:** 14875

PAPER • OPEN ACCESS

## Decision Support System of Teacher Performance Assessment with Smart Method

6

To cite this article: Mardi Turnip *et al* 2019 *J. Phys.: Conf. Ser.* **1361** 012066

View the [article online](#) for updates and enhancements.



**IOP | ebooks™**

Bringing you innovative digital publishing with leading voices to create your essential collection of books in STEM research.

Start exploring the collection - download the first chapter of every title for free.

## 7 Decision Support System of Teacher Performance Assessment with Smart Method

<sup>1</sup>Mardi <sup>3</sup>rnip<sup>\*</sup>, <sup>1</sup>Pipin, <sup>1</sup>Siti Aisyah, <sup>1</sup>Anita Christine Sembiring, <sup>2</sup>Erni Murniarti

<sup>1</sup>Faculty of Technology and Computer Science, Universitas Prima Indonesia, Indonesia

<sup>2</sup>Educational Administration and Management Master's Degree Departement Post Graduate of Universitas Kristen Indonesia.

E-mails: marditurnip@unprimdn.ac.id<sup>\*</sup>, youxiang296@gmail.com, sitiaisyah@unprimdn.ac.id, anitakembaren22@gmail.com

**Abstract.** In general, the teacher assessment process in Indonesia is still carried out conventionally (this results in the length of time needed for decision making). The criteria used in this study are pedagogic, personality, social, professional. In this research, web-based decision support system application with SMART method will be built. Based on the research conducted, there were significant differences before and after using this application.

### 3 Introduction

The development of information technology today is inseparable from the rapid development of computer technology, because computers are media that can provide convenience for humans to complete a job. This is inseparable from human activities which are often supported by information technology itself which is able to answer the demands of work that is easier and saves time. Information technology is very helpful for companies or agencies in processing work data so that they get accurate information to determine decisions. Decision Support System (DSS) began to be developed in 1965 until the mid-1990s. The use of technology encourages the development of technology in various fields, one of which is in the field of education. The quality of human resources is one of the factors needed to improve the productivity of an educational institution's performance. (Law number 14 of 2005 concerning teachers and lecturers) [1-3]. In recent years, more research related to DSS with SMART methods have been carried out, including: Mesdina Situmeang (2015), FM Kasie (2013), Dodi Siregar, et al (2015), Ardi Kurniawan, Kusri (2016) the number of studies caused by the increasing need to overcome the limitations of conventional decision-making systems those are still widely used in schools. In general, the teacher assessment process in Indonesia is still carried out conventionally (this results in the length of time needed for decision making). The criteria used in these study are pedagogic, personality, social, professional. In this research, web-based decision support system application with SMART method will be built. Based on the research conducted, there were significant differences before and after using this application.

### 1 Methods

There are several steps in applying the SMART method, namely: Identifying decision problems. Definition of problems must be done to find the root of the problem and the limitations that exist. Decisions like what will be taken must be defined first, so that the decision-making process can be directed and not deviate from the objectives to be achieved. The definition of the decision maker is



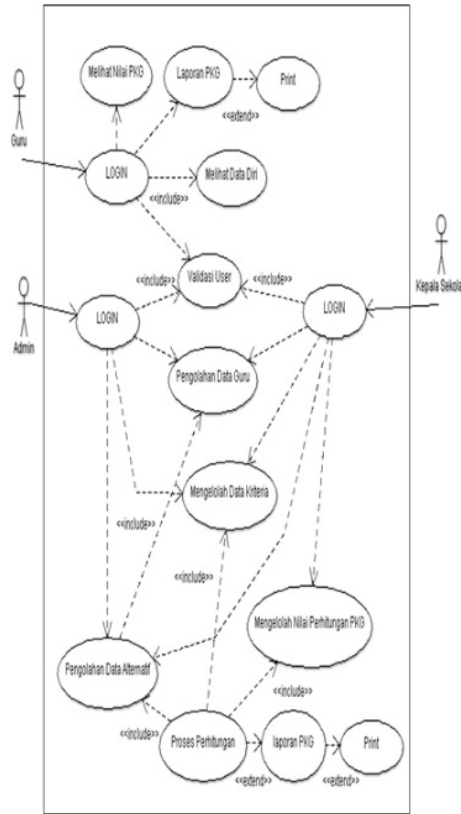
Content from this work may be used under the terms of the [Creative Commons Attribution 3.0 licence](https://creativecommons.org/licenses/by/3.0/). Any further distribution of this work must maintain attribution to the author(s) and the title of the work, journal citation and DOI.

done so that the gift will be the value of the criteria can be in accordance with the importance of these criteria for alternatives. Identify the criteria used in making decisions. Identify alternatives to be evaluated. At this stage the data collection process will carried out. Identify relevant criteria for alternative assessments. Need to limit values. This can be achieved by eliminating less important goals. Edwards believes that there is no need to have a complete list of goals. Fifteen are considered too many and eight are considered large enough. Ranks on the position of importance of criteria In this case it is considered quite easy compared to the development of weight.

This needs to be done to be able to give weight to each criterion. Because the weight is given to the criteria will depend on ranking criteria. Giving weight to each criterion Giving weight is given with a value that can be determined by the user himself. In this case the weighting will be done twice based on the criteria that is considered most important and based on the criteria that is considered the least important. The criteria that is considered most important are given a value of 100. The next important criterion is given a value that describes the comparison of relative importance to the least important dimension. This process will be continued until the weighting is given to the criteria that is considered least important to be obtained. The same step will also be done by comparing the least important criteria given a value of 10. The next most important criterion is given a value that describes the comparison of interests relative to the most important dimensions. This process will be continued until the granting of weight to the criteria that is considered most important is obtained. Calculate normalization of the weight of the criteria The weight obtained will be normalized where the weight of each criterion obtained will be shared with the result of the sum of each criteria weight. Normalization will also be carried out based on the most important criteria and the least important criteria. The value of the two normalizations obtained will find the average value.

### 3. Results and Discussion

Based on the current system analysis, it can be described the Use Case of the proposed system as shown in Figure 1.



5

Figure 1. Use Case Diagram of Proposed System.

Class Diagrams describe the structure of an object system. This diagram shows the class of Objects that make up the system and also the relationship between the Object classes.

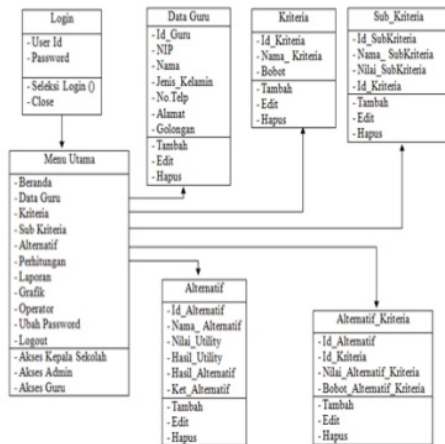
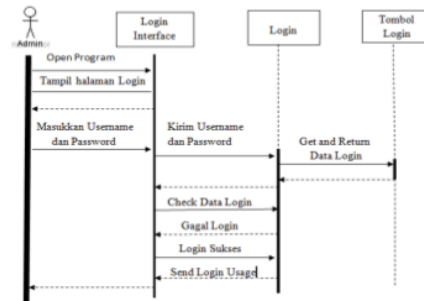


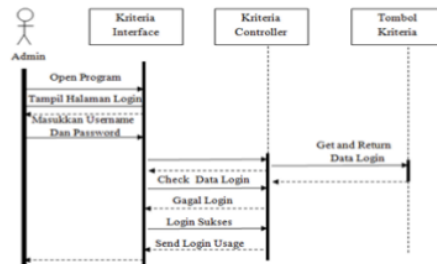
Figure 2. Class Diagram of Proposed System.

The following is the proposed Sequence Diagram, which is as follows:



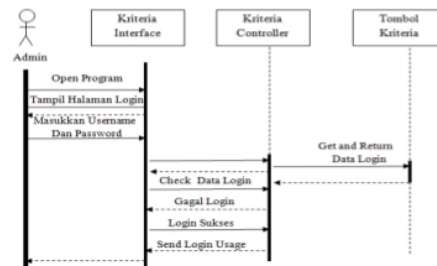
**Figure 3.** Sequence Diagram Login Form.

The application user opens the login form then the user enters the application according to the type of user. If the application user is logged in as a teacher, the application will open the teacher performance evaluation form. If the application user is logged in as admin then the application opens the admin form and if the application user is logged in as the principal then the application opens the principal form.



**Figure 4.** Sequence of Teacher Data Registration System Diagram.

Application users open the teacher data form. If the User or here admin adds data then the data will be saved. If the user changes the data, the teacher data will be changed. If the user deletes the data, the data will be deleted.



**Figure 5.** Sequence PKG Criteria Value System Diagram.

Application users open the criteria form. Then process the data as needed, example if the user adds criteria, it will be saved. If the user changes the criteria, the criteria will be changed and if the user deletes the criteria, the criteria will be deleted.

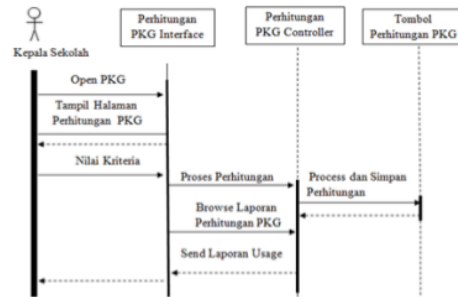


Figure 6. Sequence System Diagram for PKG Calculation.

Application users open the criteria form. Then process the data as needed, example if the user adds a calculation, it will be saved. If the user changes the calculation, the calculation will be changed and if the user deletes the calculation, the calculation will be deleted. Application users can produce decisions based on criteria that are in the database of their respective criteria.

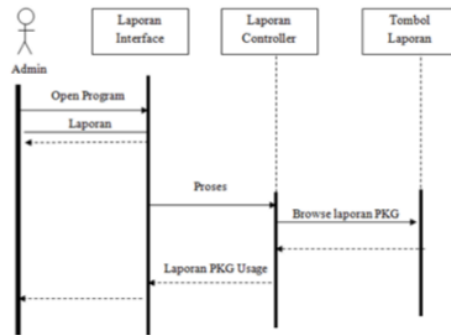


Figure 7. Report Sequence Diagram.

Application users open the Report form. Then process the data according to need, example if the user enters from the report, then the result is the overall value of the calculation. If the user prints a report, the report will be printed. Activity Diagram describes the functional flow of the system. In the modeling stage, Activity diagram can be used to show the work flow and can be used to model actions that will be performed when an operation is executed, and model the results of the action that. Following are the proposed Activity Diagrams, which are as follows:

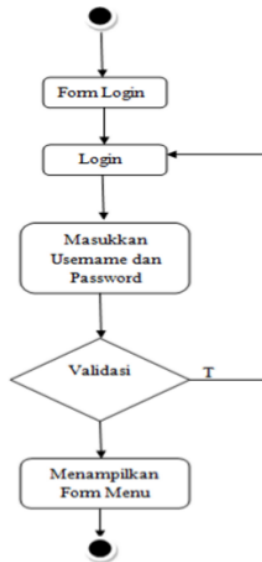


Figure 8. Login Activity Diagram.

The application user opens the login form then the user enters the application according to the type of user. If the application user is logged in as a teacher, the application will open the teacher performance evaluation form. If the application user is logged in as admin then the application opens the admin form and if the application user is logged in as the principal then the application opens the principal form.

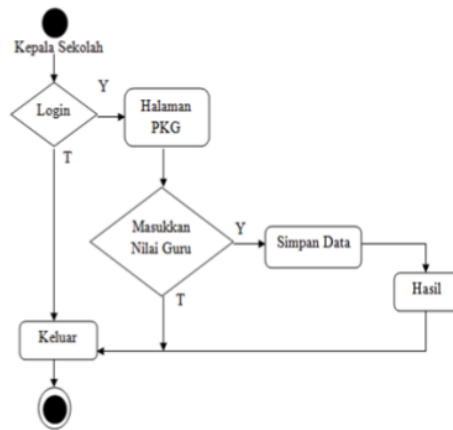


Figure 9. PKG Calculation Activity Diagram.

Application users open the criteria form. Then process the data as needed, example if the user adds a calculation, it will be saved. If the user changes the calculation, the calculation will be changed and if the user deletes the calculation, the calculation will be deleted. Application users can produce decisions based on criteria that are in the database of their respective criteria.



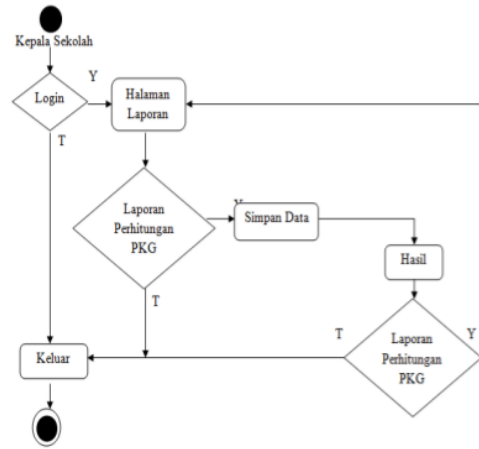


Figure 10. Report Activity Diagram.

Application users open the Report form. Then process the data according to need, ie if the user enters from the report, then the result of the overall value of the calculation. If the user prints a report, the report will be printed.

The decision support system application made was implemented in Binjai 7 Public High School. Steps for making decisions using the SMART method:

- criteria used in assessing teacher performance (pedagogic, personality, social, professional)
- the alternative is a high school teacher criteria ranking and weighting based on the most important criteria and least important criteria. The most important criteria are set with a weight of 100 and the least important criteria is set with a value of 10.
- From the average weight criteria based on the most important and least important.
- Calculating utility values for all alternatives based on each criterion using the SMART formula. The formula used in SMART is equation 1. The  $W_j$  value is obtained from step 4 and the value of  $U_{ij}$  is obtained from step 5.
- Obtain an alternative order of importance based on the highest score, a minimum range of 50 and a maximum of 90.

The following is an example of calculating a case using an SMART method. Suppose that 6 alternatives are used with the following values:

Table 1. Teacher assessment.

Criteria	Teacher 1	Teacher 2	Teacher 3	Teacher 4	Teacher 5	Teacher 6
C1	100	60	40	40	60	40
C2	75	75	50	0	50	75
C3	100	50	50	50	50	100
C4	50	100	50	0	50	0

In this table there are 6 alternatives for Teacher 1 - Teacher 6. Assessed based on the principal's assessment of the teachers. Where C1: Pedagogic, C2: Personality, C3: Social, C4: Professional.

Table 2. Evaluation of Teacher's criteria.

Alternative	C1	C2	C3	C4	Result
Weight	0.4	0.3	0.2	0.1	
Teacher 1	100	75	100	50	87.5
Teacher 2	60	75	50	100	66,5

10					
Teacher 3	40	50	50	50	46
Teacher 4	40	0	50	0	26
Teacher 5	60	50	50	50	54
Teacher 6	40	75	100	0	58.5

In this table there are alternatives. Assessed based on the assessment of the principal. Where  $A_i$  is an alternative and  $W_j$  is normalizing the weight. To get the evaluation weight, the meal is obtained from the multiplication results from  $A_i$  and  $W_j$ . For example an alternative value of 1: 100 multiplied by the normalization of weight  $C_1$ : Then  $100 \times 0.4 = 40$ . And the result is the total number of multiplication weights.

**Table 3.** Decision results.

No	10	Alternative	Value	Decision
1		Teacher 1	87.5	Very Worthy
2		Teacher 2	66.5	Worthy
3		Teacher 3	58,5	Worthy
4		Teacher 4	54	Considered
5		Teacher 5	46	Considered
6		Teacher 6	26	Not worthy

From the value range table above, it can be seen that the teacher performance evaluation with alternative teacher 1 is better than teacher 2 - teacher 6 so that teacher 1 can be stated as the best alternative.

#### 4. Conclusions

The final result of this study is that there are significant differences before and after using this application.

#### References

- [1] Ardi Kurniawan Kusri 2016 Analysis and Design of Decision Support System for Teacher Performance Assessment (PKG) using Simple Additive Weighting Method (SAW) on 1 Wonoroto Public Elementary School Based on Website 6 (1) 3
- [2] Eriyanto 2014 Implementation of Law Number 14 Year 2005 Article 7 Point C Concerning Teachers and Lecturers in Madrasah Aliyah Se Kampar Regency Thesis thesis State Islamic University Sultan Sarif Kasim Riau
- [3] Fitri Mulyani 2015 Concept of Teacher Competence in Law Number 14 of 2005 concerning Teachers and Lecturers in Madrasah (Studies of Islamic Education) Garut University
- [4] Mesdina Situmeang 2015 Designing the Best Lecturer Performance Appraisal Application using the Simple Multi Attribute Rating Technique Method (Case Study: Binalita Sudama Medan Foundation Actor) 5 (2) 3
- [5] F M Kasie "Combining the Simple Multiple Attribute Rating Technique and Analytical Hierarchy Process for Designing the Multi-Criteria Performance Measurement Framework" Global Journal of Research in Engineering Industrial Engineering vol 13 no 1 pp 14-30 2013
- [6] Suryanto Muhammad Safrizal 2015 Decision Support System for the Selection of Exemplary Employees with the SMART Method (Simple Multi Attribute Rating Technique) 1 (2) 26
- [7] Yohana Dewi Lulu W Rani Maya Sari Heni Rachmawati 2010 Determination of the Best Employees Using Fuzzy Simple Additive Weighting (SAW) Methods Case Study of PT. PERTAMINA RU II DUMAI 1 (3) 2
- [8] Savitha K. and andrasekar C 2011 Vertical Handover decision schemes using SAW and MADMWP for Network selection in Heterogeneous Wireless Networks. Double Blind Peer Reviewed International Research Journal 11 (9) 19-24

- [9] Herdiyanti Astri and Widiyanti Utami Dewi 2013 Construction of New Employee Recruitment Decision Support Systems at PT. ABC, *Journal of Scientific Computers and Information* 2 (2) ISSN: 2089-9033
- [10] Qian G Hai W and Xiangqian F Generalized hesitant fuzzy sets and their application in decision support systems *Knowledge-Based Systems* 37 (2013) 357-365
- [11] Tanius Sonavia 2010 Decision Support System for Recruitment of New Teaching staff In *Libra Education Institute with TOPSIS Method Thesis of Computer Science Study Program Faculty of Mathematics and Natural Sciences University of North Sumatra*
- [12] Sugumaran R and DeGroot J 2011 *Spatial Decision Support Systems Principles and Practice Florida: CRC Press*
- [13] Musen M A Blackford M and Robert A G 2014 *Clinical decision-support systems. Biomedical informatics Springer London* 643-674
- [14] Compiler T 2011 *Guidelines for Implementing Teacher Performance Assessment (Teacher's PK) Ministry of National Education*
- [15] Bidgoli H 1989 *Decision Support Systems: Principle and Practice St Paul: West Publishing Company*
- [16] Mitchael Hutomo Tanuwibowo Roy Setiawan 2015 Effect of Organizational culture and Work Motivation on Employee Performance at PT. Lestari Purnama Perkasa 3 (2) 62
- [17] Sauter V L 1997 *Decision Support Systems: An Applied Managerial Approach. New York: John Willey & Sons Inc*
- [18] Dewantoro Aji Decision Support System Determining Exemplary Teachers at Semarang 24 Junior High School Using Simple Additive Weighting Method Thesis Semarang: UDINUS 2013
- [19] Dodi Siregar Dika Arisandi Ari Usman Dedy Irwan Robbi Rahim 2015 Research of Simple Multi Attribute Rating Technique for Decision Support 1 (1): 92
- [20] Turban E Rainer R K and Potter R E 2005 *Introduction to Information Technology Hoboken: John Willey & Sons*
- [21] Zhou M 2011 *Communication in Computer and Information Science New York: Springer*
- [22] Suryadi K and Ramdhani M A 1998 *Decision Support Systems: A Structural Discourse of Idelisasi and Implementation of Decision Making Concepts Bandung: Teen Rosda Offset works*
- [23] Bidgoli H 1989 *Decision Support Systems: Principle and Practice St Paul: West Publishing Company*

3

**Acknowledgments**

This research was supported and funded by Universitas Prima Indonesia.

# Decision Support System of Teacher Performance Assessment with Smart Method

## ORIGINALITY REPORT

28%

SIMILARITY INDEX

13%

INTERNET SOURCES

22%

PUBLICATIONS

9%

STUDENT PAPERS

## PRIMARY SOURCES

- 1 Berti Sari Br Sembiring, Muhammad Zarlis, Sawaluddin, Alfian Agusnady, Titin Qowidho. "Comparison of SMART and SAW Methods in Decision Making", Journal of Physics: Conference Series, 2019  
Publication 10%
- 2 repository.unhas.ac.id  
Internet Source 5%
- 3 Angelina, Ruth Damayanti Surbakti, Risky Sandi Simamora, Erick Cendana, Delima Sitanggang, Jeffry Banjarnahor, Mardi Turnip. "Application Selection Lending Houses Subsidized by the Method of AHP and SAW", Journal of Physics: Conference Series, 2019  
Publication 3%
- 4 Submitted to School of Business and Management ITB  
Student Paper 2%
- 5 E. M. A Fenty, Khodijah Hulliyah, Mayang

Ekafitri. "Applying mobile application development life cycle in the development of Zakat maal mobile web application using JQuery mobile framework", 2014 International Conference on Cyber and IT Service Management (CITSM), 2014

Publication

1%

6

[repository.unair.ac.id](https://repository.unair.ac.id)

Internet Source

1%

7

Husnul Hafizah, Darmawan Napitupulu, Krisna Adiyarta, Agus Perdana Windarto. "Decision Support System for Teacher Performance Assessment of SMK Nusantara 1 Ciputat Based on AHP and TOPSIS", Journal of Physics: Conference Series, 2019

Publication

1%

8

Ana Rusmardiana, Tri Yani Akhirina, Dwi Yulistiyanti, Ulfa Pauziah. "A Web-Based High School Major Decision Support System in Banten Using Tsukamoto's Fuzzy Method", 2018 International Seminar on Intelligent Technology and Its Applications (ISITIA), 2018

Publication

1%

9

Meta Amalya Dewi, Dina Fitria Murad, Rosdiana. "Implementation of the SMART Models for Application Development Employee Performance Appraisal", 2019 International

1%

# Conference on Sustainable Information Engineering and Technology (SIET), 2019

Publication

10

[www.mansfieldisdoundation.org](http://www.mansfieldisdoundation.org)

Internet Source

1%

11

Devika Naidoo. "Losing the "purity" of subjects? Understanding teachers' perceptions of integrating subjects into learning areas", Education as Change, 2010

Publication

1%

12

Submitted to The University of the West of Scotland

Student Paper

<1%

13

Submitted to CTI Education Group

Student Paper

<1%

Exclude quotes  On

Exclude matches  Off

Exclude bibliography  On