

University of Nebraska - Lincoln

DigitalCommons@University of Nebraska - Lincoln

Biochemistry -- Faculty Publications

Biochemistry, Department of

Transcriptome analysis-identified long noncoding RNA CRNDE in maintaining endothelial cell proliferation, migration, and tube formation

Matthew Moran

Xiao Cheng Zeng

Mohamed Sham Shihabudeen Haider Ali

Nishikant Wase

Nghi Nguyen

See next page for additional authors

Follow this and additional works at: <https://digitalcommons.unl.edu/biochemfacpub>



Part of the [Biochemistry Commons](#), [Biotechnology Commons](#), and the [Other Biochemistry, Biophysics, and Structural Biology Commons](#)

This Article is brought to you for free and open access by the Biochemistry, Department of at DigitalCommons@University of Nebraska - Lincoln. It has been accepted for inclusion in Biochemistry -- Faculty Publications by an authorized administrator of DigitalCommons@University of Nebraska - Lincoln.

Authors

Matthew Moran, Xiao Cheng Zeng, Mohamed Sham Shihabudeen Haider Ali, Nishikant Wase, Nghi Nguyen, Weilong Yang, Chi Zhang, Concetta C. DiRusso, and Xinghui Sun

OPEN

Transcriptome analysis-identified long noncoding RNA CRNDE in maintaining endothelial cell proliferation, migration, and tube formation

Matthew Moran¹, Xiao Cheng¹, Mohamed Sham Shihabudeen Haider Ali¹, Nishikant Wase¹, Nghi Nguyen¹, Weilong Yang², Chi Zhang², Concetta DiRusso^{1,3} & Xinghui Sun^{1,4*}

Obesity is a leading risk factor for type-2 diabetes. Diabetes often leads to the dysregulation of angiogenesis, although the mechanism is not fully understood. Previously, long noncoding RNAs (lncRNAs) have been found to modulate angiogenesis. In this study, we asked how the expression levels of lncRNAs change in endothelial cells in response to excessive palmitic acid treatment, an obesity-like condition. Bioinformatics analysis revealed that 305 protein-coding transcripts were upregulated and 70 were downregulated, while 64 lncRNAs were upregulated and 46 were downregulated. Gene ontology and pathway analysis identified endoplasmic reticulum stress, HIF-1 signaling, and Toll-like receptor signaling as enriched after palmitic acid treatment. Moreover, we newly report enrichment of AGE-RAGE signaling pathway in diabetic complications, IL-17 signaling, and cysteine and methionine metabolism by palmitic acid. One lncRNA, Colorectal Neoplasia Differentially Expressed (CRNDE), was selected for further investigation. Palmitic acid induces CRNDE expression by 1.9-fold. We observed that CRNDE knockdown decreases endothelial cell proliferation, migration, and capillary tube formation. These decreases are synergistic under palmitic acid stress. These data demonstrated that lncRNA CRNDE is a regulator of endothelial cell proliferation, migration, and tube formation in response to palmitic acid, and a potential target for therapies treating the complications of obesity-induced diabetes.

Diabetes and obesity have become major health problems throughout the world. As of 2017, approximately 24,710,000 people in the United States had diabetes, with an estimated economic impact of \$327 billion¹. One of the major processes dysregulated in diabetes is angiogenesis, i.e., the formation of new capillaries from existing ones². One of the major components of angiogenesis is endothelial cells. Endothelial cells line the inner walls of the blood vessels and form a barrier between the blood and tissues. Angiogenesis begins when endothelial cells receive pro-angiogenic signals from hypoxic or injured tissues³. In response, endothelial cells migrate through the tissue following the gradient of angiogenic signals from both sides, proliferating to create a new vessel, until they fuse and form a new capillary². A complete picture, however, has yet to be developed of how endothelial cells function and how they are regulated in obesity that lead to endothelial dysfunction, especially regarding the role of lncRNAs.

lncRNAs are defined as RNA molecules that are longer than 200 nucleotides and do not code for protein. They have been shown to affect numerous processes, such as development and tumorigenesis⁴. lncRNAs, such as metastasis associated lung adenocarcinoma transcript 1 (MALAT1), MANTIS, myocardial infarction associated transcript (MIAT) and antisense non-coding RNA in the INK4 locus (ANRIL)^{5–8}, have been found to regulate

¹Department of Biochemistry, University of Nebraska - Lincoln, Lincoln, Nebraska, 68588, USA. ²Center for Plant Science Innovation, School of Biological Sciences, University of Nebraska - Lincoln, Lincoln, Nebraska, 68588, USA.

³Nebraska Center for Integrated Biomolecular Communication, University of Nebraska - Lincoln, Lincoln, Nebraska, 68588, USA. ⁴Nebraska Center for the Prevention of Obesity Diseases through Dietary Molecules, University of Nebraska - Lincoln, Lincoln, Nebraska, 68588, USA. *email: xsun17@unl.edu

angiogenesis by adopting a variety of roles. Knockdown of the lncRNA MALAT1 causes dysregulated proliferation of endothelial cells and inhibition of recovery from hindlimb ischemia⁶. MANTIS is a lncRNA found to be required for transcription of angiogenesis genes, such as SOX18 and SMAD6⁵. MIAT promotes angiogenesis by acting as a competing endogenous RNA to miR-150-5p⁸, and ANRIL inhibits angiogenesis through binding to the Polycomb Repressor Complex 2⁷.

Obesity is a leading risk factor for type 2 diabetes, and it is associated with increasing levels of circulating free fatty acids, especially palmitic acid^{9,10}. Thus, palmitic acid is often used as an inducer *in vitro* to mimic obesogenic conditions present *in vivo*. Palmitic acid can cause endothelial dysfunction by interfering with normal signaling pathways. For example, it impairs insulin signaling, eNOS activity, and nitric oxide production by inducing the activation of I κ B-kinase β ¹¹ or promoting PTEN activity¹². It induces superoxide production through NADPH oxidase¹³, which is mediated by Toll-like receptor 4¹⁴. Recently, it was reported that palmitic acid treatment can activate the Stimulator of Interferon Genes (STING) by inducing mitochondrial damage and leakage of mitochondrial DNA into the cytosol¹⁵. Despite these exciting studies, the transcriptome regulated by palmitic acid in endothelial cells and the role of lncRNAs in regulating endothelial response to palmitic acid are not completely understood. In this study, an understanding of the transcriptome was acquired through RNA-seq and a highly expressed lncRNA, CRNDE, was selected for further study to determine its effects on angiogenesis. It is observed that palmitic acid upregulates genes involved in stress response and reduces angiogenic function. Also, knockdown of the lncRNA CRNDE inhibits angiogenic potential in endothelial cells.

Results

Analysis of HUVEC transcriptome. To determine the effect that palmitic acid has on endothelial transcriptome, RNA-seq was performed. Human umbilical vein endothelial cells (HUVECs) were treated with 100 μ M palmitic acid and RNA sequencing was performed. After alignment and differential expression analysis, according to the process outlined in Fig. 1A, principal component analysis of the clusters was performed, and the palmitic acid treatment and control (fatty acid-free BSA) clustered as expected (Supplementary Fig. 1A). 35.5% of transcripts analyzed are mRNA and 27.4% are lncRNA (Fig. 1B). There were between 60 million and 80 million reads mapped for the samples (Supplementary Table 1). An mRNA was considered as expressed if the average counts per million (CPM) in one condition (control or PA) was greater than 1. Of the 27.4% mapped as lncRNA, 53.6% was intergenic lncRNA, which was analyzed further in this study (Fig. 1C). LncRNA was considered expressed if the CPM in one condition was greater than 0.1 to include lncRNAs expressed at low levels in the analysis as lncRNA expression levels are 10-fold less abundant than mRNAs¹⁶. All mRNAs or lncRNAs that were not found to be expressed were eliminated from the analysis. mRNAs and lncRNAs were considered as significantly differentially expressed if the fold change of palmitic acid versus control was greater than 1.5 or less than 0.66 and the p-value was less than 0.05. Analysis based on mapping to individual chromosomes found that the highest number of differentially expressed mRNAs and lncRNAs were on chromosome 1 (Supplementary Figs. 1B and 2A). Analysis of the expression levels of the mRNA found that the transcripts which were differentially expressed had a wide range of expression (Fig. 2A). Heatmap analysis of the differentially expressed mRNA showed 305 protein-coding transcripts upregulated after palmitic acid treatment compared to control, and 70 protein-coding transcripts downregulated (Supplementary Fig. 1C). The top 20 upregulated and 20 downregulated mRNAs were shown in Fig. 2B. We found that the top enriched Kyoto Encyclopedia of Genes and Genomes (KEGG) pathways in differentially expressed genes were linked to the tumor necrosis factor- α (TNF- α), MAPK, NF- κ B, PPAR, HIF-1 signaling pathways and insulin resistance (Fig. 2C, Table 1). In addition, we discovered that AGE-RAGE signaling pathway in diabetic complications and IL-17 signaling were enriched, which have not been reported. Gene Ontology (GO) analysis by Gene Set Enrichment Analysis of genes induced by palmitic acid showed a number of enriched GO terms (Table 2). Palmitic acid induces endoplasmic reticulum (ER) stress^{17,18}, and this was also shown by being the most enriched GO terms in our RNA-seq (Table 2). Given this, we examined the effect of CRNDE knockdown on ER stress response genes. CRNDE knockdown reduces the ER stress response (Supplementary Fig. 1D), as measured by the ER stress response genes DNA damage inducible transcript 3 (DDIT3), PRKR-like endoplasmic reticulum kinase (PERK, also known as eukaryotic initiation factor 2 alpha kinase 3), X-box binding protein 1 (XBP1) and activating transcription factor-6 (ATF6). These data suggest that CRNDE is involved in the upregulation of ER stress response genes by palmitic acid. Analysis of genes reduced by palmitic acid showed enrichment in GO terms such as Wnt protein binding, Wnt activated receptor activity, transforming growth factor beta binding, and transforming growth factor beta receptor binding (Table 3). Expression level analysis of differentially expressed lncRNAs, using the same fold change cutoff as mRNA, showed the same range of expression as mRNA, although some of the most highly expressed lncRNA were not significantly differentially expressed (Fig. 3A). Heatmap analysis of the significantly differentially expressed lncRNAs showed that 64 lncRNAs were upregulated and 46 downregulated (Supplementary Fig. 2B; Supplementary Table 3). CRNDE (indicated by the red dot in Fig. 3A) is one of the highest expressed lncRNAs that was also significantly induced by palmitic acid. The top 20 lncRNAs by expression that are also differentially expressed were shown in Fig. 3B. Our data shows that the expression of many protein-coding genes and lncRNAs were changed by palmitic acid in HUVECs.

LncRNA CRNDE expression is induced by palmitic acid in HUVECs. The lncRNA CRNDE was chosen for further study, since it is highly expressed in HUVECs and its expression was significantly induced by palmitic acid (Fig. 3B). CPMs for CRNDE are shown in Supplementary Table 2. CRNDE upregulation was confirmed by qPCR after HUVECs were treated with 100 μ M palmitic acid. After 12 hours, CRNDE was significantly upregulated by 1.9-fold (Fig. 3C). HMOX1 and VEGF-A, which are well known genes involved in angiogenesis^{19,20}, were also analyzed to compare the relative expression of CRNDE with them (Fig. 3C). To examine the mechanisms underlying CRNDE induction by palmitic acid in HUVECs, the proximal promoter of CRNDE

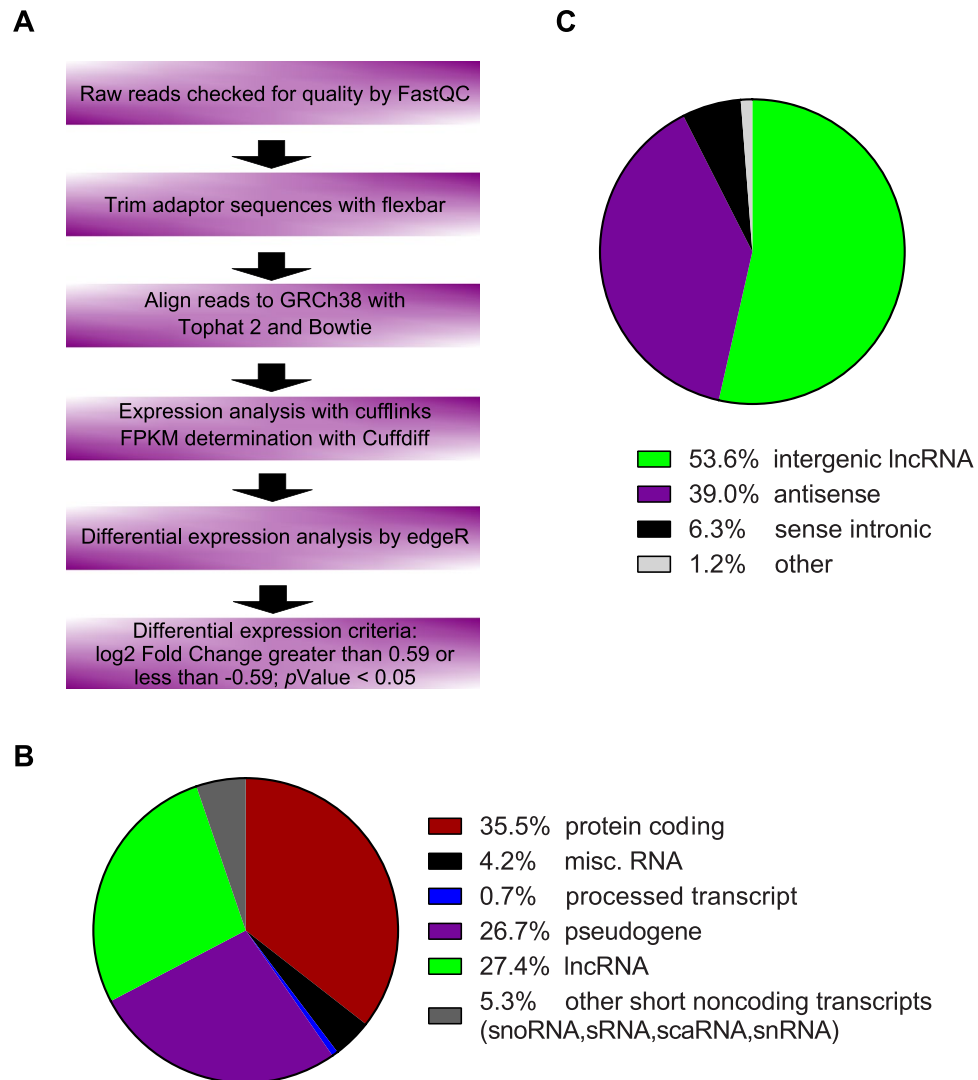


Figure 1. Distribution of RNA-seq data. **(A)** Analysis workflow for RNA-seq data. **(B)** Percentage of the different types of RNA identified by RNA-seq. **(C)** Percentages of the different types of lncRNA identified in **(B)**.

was cloned into luciferase reporter (Supplementary Fig. 3). The CRNDE promoter was defined as a sequence of 1761 nucleotides surrounding the transcription start site encompassing 1718 nucleotides upstream of the *Crnde* gene and 43 nucleotides of 5' *Crnde* gene. The luciferase activities were increased by 8.1-fold in the presence of CRNDE promoter, indicating CRNDE promoter indeed activates luciferase expression. However, the luciferase activities driven by CRNDE promoter were not further increased in HUVECs by palmitic acid treatment compared with control, suggesting a distal cis-sequence mediates CRNDE induction by palmitic acid. Given the effect of palmitic acid upregulating NF- κ B signaling, it was unknown whether palmitic acid induces CRNDE expression through NF- κ B signaling. HUVECs were treated with TNF- α to activate NF- κ B signaling, then the expression of CRNDE expression was examined by qPCR. It turned out the CRNDE expression was not TNF- α -responsive (Supplementary Fig. 4), suggesting the induction of CRNDE by palmitic acid is not likely mediated by palmitic acid-activated NF- κ B signaling.

CRNDE knockdown inhibits angiogenic potential. To determine the effect of CRNDE on endothelial cells, functional assays were performed. Lentiviral shRNA against CRNDE (shCRNDE) was used to knock down CRNDE expression, and endothelial cell proliferation, migration, and angiogenic activity were measured. CRNDE expression was reduced by 87.5% in HUVECs transduced with lentiviral shCRNDE (Supplementary Fig. 5). CRNDE knockdown reduces the wound closure by 27.1% in the scratch-wound assay (Fig. 4A,B), indicating CRNDE knockdown inhibits cell migration. As a measure of angiogenic activity, a Matrigel[®] capillary-like tube formation assay²¹ was performed (Fig. 4C–E). After 6 h, total tube length, nodes and segments were reduced by 57.7%, 87.2% and 85.5%, respectively, in HUVECs transduced with lentiviral shCRNDE than in HUVECs transduced with lentiviral control shRNA, indicating that CRNDE knockdown has an inhibitory effect on the capacity of HUVECs to form capillary-like tube structures. The effects of CRNDE knockdown on cell cycle were examined by propidium iodide staining followed by flow cytometry analysis (Fig. 5A,B). The percentage of cells

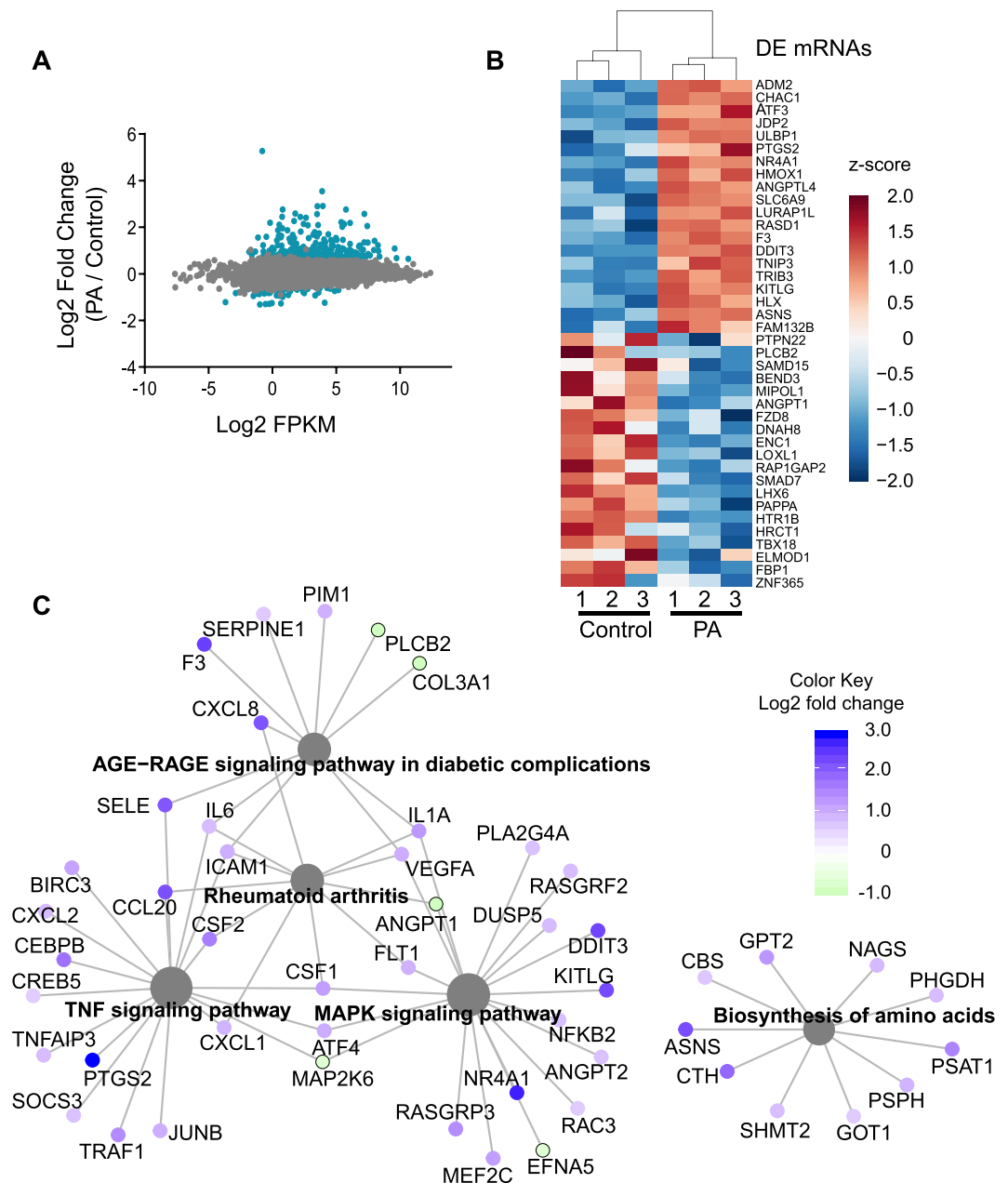


Figure 2. Differentially expressed mRNAs. **(A)** Expression plot of identified mRNAs. Expression is determined by average FPKM. Blue are those mRNAs significantly differentially expressed. **(B)** Heatmap of the top 20 upregulated and top 20 downregulated mRNAs. Data was plotted as z-score of the log₂ fold change. **(C)** Highly enriched KEGG pathways from differentially expressed genes. Protein coding genes are identified by gene symbols.

in S phase is 8.9% after CRNDE knockdown compared with 23.9% in control cells. In contrast, the percentage of cells in G1 phase is 81.2% compared with 57.9% in control cells. These data suggest that CRNDE knockdown inhibits cell proliferation. We examined the expression of cyclin kinase inhibitor p21 by western blot analysis and found the CRNDE knockdown increases p21 expression by 1.7-fold (Fig. 5C, Supplementary Fig. 6). These data demonstrate that CRNDE knockdown inhibits the angiogenic potential of HUVECs.

CRNDE is involved in the response to palmitic acid. Having established that CRNDE is involved in angiogenesis, the role of CRNDE on angiogenesis under palmitic acid stress was determined by performing scratch and tube formation assays (Fig. 6). HUVECs were transduced with shCRNDE and treated with palmitic acid for 12 h, and then the assays were performed. In the scratch-wound assay, palmitic acid treatment reduces wound closure by 59.6% (Fig. 6A,B), which is consistent with a previous study²². CRNDE knockdown reduces wound closure by 44.0% in control HUVECs (Fig. 6A,B). Importantly, CRNDE knockdown and palmitic acid treatment have synergistic effects on wound closure, which was reduced by 74.6%. In the capillary-like tube

Pathway	No. of genes	FDR
TNF signaling pathway	18/110	2.13×10^{-8}
Rheumatoid arthritis	11/91	8.02×10^{-4}
Biosynthesis of amino acids	10/75	8.02×10^{-4}
AGE-RAGE signaling pathway in diabetic complications	11/100	1.41×10^{-3}
MAPK signaling pathway	19/295	3.70×10^{-3}
NF-kappa B signaling pathway	10/100	4.69×10^{-3}
Transcriptional misregulation in cancer	14/186	4.69×10^{-3}
Glycine, serine and threonine metabolism	6/40	9.15×10^{-3}
IL-17 signaling pathway	9/93	9.15×10^{-3}
PPAR signaling pathway	8/76	9.84×10^{-3}
Fluid shear stress and atherosclerosis	11/139	1.00×10^{-2}
HIF-1 signaling pathway	9/100	1.17×10^{-2}
Cysteine and methionine metabolism	6/49	1.67×10^{-2}
Insulin resistance	9/108	1.67×10^{-2}
One carbon pool by folate	4/20	1.67×10^{-2}
Ras signaling pathway	14/232	1.90×10^{-2}
Rap1 signaling pathway	13/208	1.92×10^{-2}
Kaposi sarcoma-associated herpesvirus infection	12/186	2.10×10^{-2}
Amoebiasis	8/95	2.26×10^{-2}
Ferroptosis	5/40	2.75×10^{-2}

Table 1. Enriched KEGG pathways in differentially expressed genes. No. of genes is reported as the number of genes in the pathway identified as differentially expressed in this data set versus the total number of genes in the pathway.

Category	Name	No. of Genes	FDR
Biological Process	Intrinsic Apoptotic Signaling Pathway in Response to Endoplasmic Reticulum Stress	30/32	1.03×10^{-4}
	Response to Endoplasmic Reticulum Stress	196/233	7.81×10^{-4}
	Decidualization	14/21	1.91×10^{-3}
	Cellular Response to Topologically Incorrect Protein	99/122	1.98×10^{-3}
	Positive Regulation of Transcription From RNA Polymerase II Promoter umn Response to Stress	18/23	3.03×10^{-3}
Cellular Component	Nuclear Nucleosome	30/41	5.20×10^{-3}
	DNA Packaging Complex	79/108	7.01×10^{-3}
	Anchored Component of Membrane	38/152	6.65×10^{-2}
	Nuclear Euchromatin	20/24	1.21×10^{-1}
	Pre Autophagosomal Structure	25/31	1.32×10^{-1}
Metabolic Function	Amino Acid Transmembrane Transporter Activity	39/79	2.85×10^{-3}
	Hormone Activity	16/119	6.59×10^{-3}
	L Amino Acid Transmembrane Transporter Activity	31/54	1.01×10^{-2}
	Anion Cation Symporter Activity	17/53	1.85×10^{-2}
	LRR Domain Binding	14/17	2.01×10^{-2}

Table 2. Top 5 Gene Ontology terms from each category enriched in genes upregulated by palmitic acid. No. of genes is reported as the number of genes in the term identified as differentially expressed in this data set versus the total number of genes in the term.

formation assay, palmitic acid treatment reduces tube length by 35.4% in shNT-treated cells (Fig. 6C,D), which is consistent with what previously reported²². In addition, palmitic acid treatment reduces the number of segments and number of nodes by 47.7% and 35.5%, respectively (Fig. 6C,D). CRNDE knockdown reduces tube length by 51.3%, the number of segments by 67.7%, and the number of nodes by 56.3% in control HUVECs (Fig. 6C,D). Similarly, CRNDE knockdown and palmitic acid treatment have synergistic effects on capillary-like tube formation. CRNDE knockdown reduces the tube length, the number of segments, and the number of nodes by 71.6%, 80.6%, and 70.6%, respectively, in HUVECs treated with palmitic acid compared with shNT-treated cells under control condition (Fig. 6C,D). CRNDE knockdown also reduces branching by 23.4% and 43.2% under control and palmitic acid conditions, respectively; palmitic does not reduce branching in shNT-treated cells (Fig. 6E). Human aortic endothelial cells (HAECs) showed a similar trend in some respects (Supplementary Fig. 7). CRNDE knockdown reduced wound closure by 43.5% under control condition. It also reduced the number of nodes and the

Category	Name	No. of Genes	FDR
Biological Process	Spliceosomal snRNP Assembly	33/38	8.47×10^{-2}
	Maturation of SSU rRNA	39/42	1.23×10^{-1}
	Nucleobase Metabolic Process	30/39	1.33×10^{-1}
	Nucleobase Biosynthetic Process	18/18	1.49×10^{-1}
	Regulation of Heart Morphogenesis	16/29	1.58×10^{-1}
Cellular Component	Small Subunit Processome	30/33	8.07×10^{-2}
	Preribosome	54/61	9.26×10^{-2}
	Small Nucleolar Ribonucleoprotein Complex	18/20	9.46×10^{-2}
	SMN Sm Protein Complex	17/17	1.12×10^{-1}
	Nucleolar Part	56/62	1.52×10^{-1}
Metabolic Function	Wnt Protein Binding	16/31	2.06×10^{-1}
	Nucleosomal DNA Binding	28/30	2.09×10^{-1}
	Wnt Activated Receptor Activity	13/22	2.23×10^{-1}
	Transforming Growth Factor Beta Binding	15/16	2.32×10^{-1}
	Transforming Growth Factor Beta Receptor Binding	27/50	2.39×10^{-1}

Table 3. Top 5 Gene Ontology terms from each category enriched in genes downregulated by palmitic acid. No. of genes is reported as the number of genes in the term identified as differentially expressed in this data set versus the total number of genes in the term.

number of segments by 16.3% and 22% respectively (Supplementary Fig. 7). Tube length and branching were not significantly reduced. Palmitic acid reduced wound closure by 68.6% and tube length, the number of nodes, the number of segments and branching by 25.9%, 57.6%, 73.6% and 34.2% respectively in shNT-treated cells (Supplementary Fig. 7). Surprisingly, overexpressing CRNDE 87.1-fold (Supplementary Fig. 8) did not produce the opposite effect when examined by the scratch-wound and tubule formation assays (Supplementary Fig. 9). CRNDE overexpression reduces tube length, the number of segments, the number of nodes and branching by 13.3%, 21.7%, 27.2%, and 27.8% respectively (Supplementary Fig. 9). When CRNDE overexpressing HUVECs are treated with palmitic acid, wound closure is reduced by 73.1% compared to control cells (Supplementary Fig. 9). Tube length, the number of segments, the number of nodes and branching are reduced by 28.3%, 38.7%, 28.4% and 32.6% respectively (Supplementary Fig. 9). Our data imply that the induction of CRNDE by palmitic acid may counteract the effects of palmitic acid on endothelial cells.

Discussion

In this study, changes in the transcriptome of HUVECs induced by palmitic acid were identified by RNA-seq, and the lncRNA CRNDE is shown to maintain angiogenic potential of HUVECs. CRNDE has already been identified as regulating metabolic pathways in cancer, but its role in diseases other than cancer has not been established. One way in which CRNDE is involved in regulating metabolism is in colorectal cancer, being downregulated by insulin in an AKT and MAPK dependent manner²³. The loss-of-function studies demonstrated that CRNDE expression promotes the metabolic changes by which cancer cells switch to aerobic glycolysis²³. CRNDE has also been identified as an oncogene, activating the Wnt signaling pathway in breast cancer by sponging miR-136²⁴. Other than cancer, CRNDE is required for platelet-derived growth factor-BB-stimulated proliferation and migration of vascular smooth muscle cells²⁵, and it inhibits the transcriptional activation of Smad3 on target genes in cardiac fibroblasts²⁶. In our studies, we found that CRNDE knockdown reduces endothelial cell migration, proliferation, and capillary-like tube formation (Figs. 4–6). These data suggest that CRNDE is an important regulator of various cellular functions in different cell types and may be a potential drug target. LncRNAs can be targeted by drugs to cause degradation, just as they are knocked down *in vitro* and *in vivo*. One such mechanism is the use of chemically modified antisense oligonucleotides. One form of antisense oligonucleotides, a gapmeR, consists of two spans of modified ribonucleotides connected by an antisense DNA linker that recruits RNase H to degrade the target RNA^{27,28}. GapmeRs have been successfully used to knock down lncRNA *in vitro* and *in vivo*^{29–31}. One gapmeR, mipomersen, has been approved for familial hypercholesterolemia³².

Our transcriptome analysis by RNA-seq revealed that the expression of hundreds of transcripts including mRNAs and lncRNAs is changed by palmitic acid in HUVECs (Figs. 1–3). Gene ontology analysis also shows that palmitic acid induces endoplasmic reticulum stress (Table 2). Palmitic acid also reduces endothelial cell proliferation and migration through activating the cGAS/STING signaling pathway, a marker of mitochondrial damage²². Interestingly, CRNDE knockdown reduces ER stress related genes (Supplementary Fig. 1D). Endoplasmic reticulum stress and oxidative stress are linked in endothelial cells³³, and oxidative stress can induce JAK-STAT signaling³⁴. CRNDE can also induce JAK-STAT in fibroblasts after lipopolysaccharide challenge³⁵. Given this, the possible connection between palmitic acid induced endoplasmic reticulum stress and CRNDE induction needs to be examined in future studies, providing a possible mechanism by which CRNDE expression is induced after palmitic acid challenge. Given that in HUVECs, CRNDE knockdown reduced endothelial cell proliferation and migration more than palmitic acid alone (Fig. 6), but CRNDE is not directly induced by palmitic acid (Supplementary Fig. 3), CRNDE may act as a compensatory mechanism to preserve some angiogenic ability after palmitic acid treatment. Palmitic acid induces other compensatory mechanisms, such as causing induction

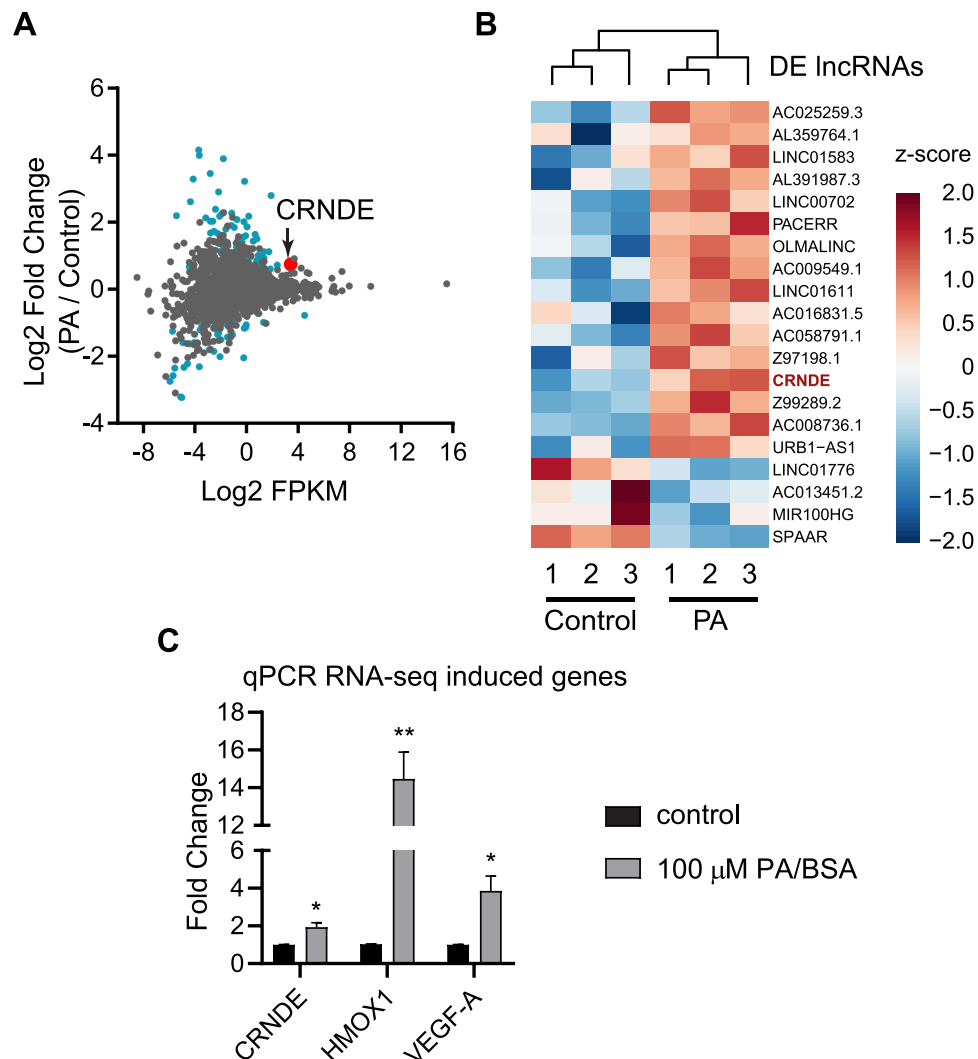


Figure 3. Differentially expressed lncRNAs. (A) Expression plot of identified lncRNAs. Expression is determined by average FPKM. Blue and red are those lncRNAs significantly differentially expressed; red is CRNDE. (B) Heatmap of the top 20 lncRNAs by expression that are differentially expressed. Data was plotted and ranked as z-score of the log₂ fold change. (C) Effect of palmitic acid on gene expression. HUVECs were treated with palmitic acid or vehicle control for 12 hours. The expression of CRNDE, HMOX1, and VEGF-A was analyzed by RT-qPCR, * $p < 0.05$, ** $p < 0.001$.

of HMOX1 (heme oxygenase 1) in neuroblastoma cells to deal with the increased oxidative stress palmitic acid causes³⁶. Indeed, in this study, HMOX1 is induced by palmitic acid (Figs. 2B and 3C).

The molecular basis by which CRNDE knockdown inhibits angiogenic potential in endothelial cells remains unknown. CRNDE promotes proliferation and migration of trophoblasts by acting as a competing endogenous RNA for miR-1277, and its knockdown reduces proliferation and migration³⁷. Given this, CRNDE may also affect endothelial cell proliferation and migration through effecting miRNA levels. When CRNDE is knocked down, there is a reduction in endothelial cell proliferation, and the cell cycle arrests in the G1 phase (Figs. 5 and 6). This is associated with an increase in p21 expression (Fig. 5C). This is consistent with a previous study showing that CRNDE silencing induces the expression of p21 in colorectal cancer cells³⁸. Thus, increased p21 expression may mediate the effects of CRNDE knockdown on endothelial cell migration, proliferation, and capillary tube formation in HUVECs. Finally, CRNDE overexpression did not have an opposite effect to CRNDE knockdown on endothelial cell proliferation and tube formation (Supplementary Fig. 9), indicating that CRNDE is necessary but not sufficient for the induction of these processes. The CRNDE overexpression results suggest additional cofactors are required to facilitate CRNDE function. While the mechanism of CRNDE's action in endothelial cells is unknown, CRNDE has the potential to be a novel target in the fight against the angiogenic complications of diabetes and obesity.

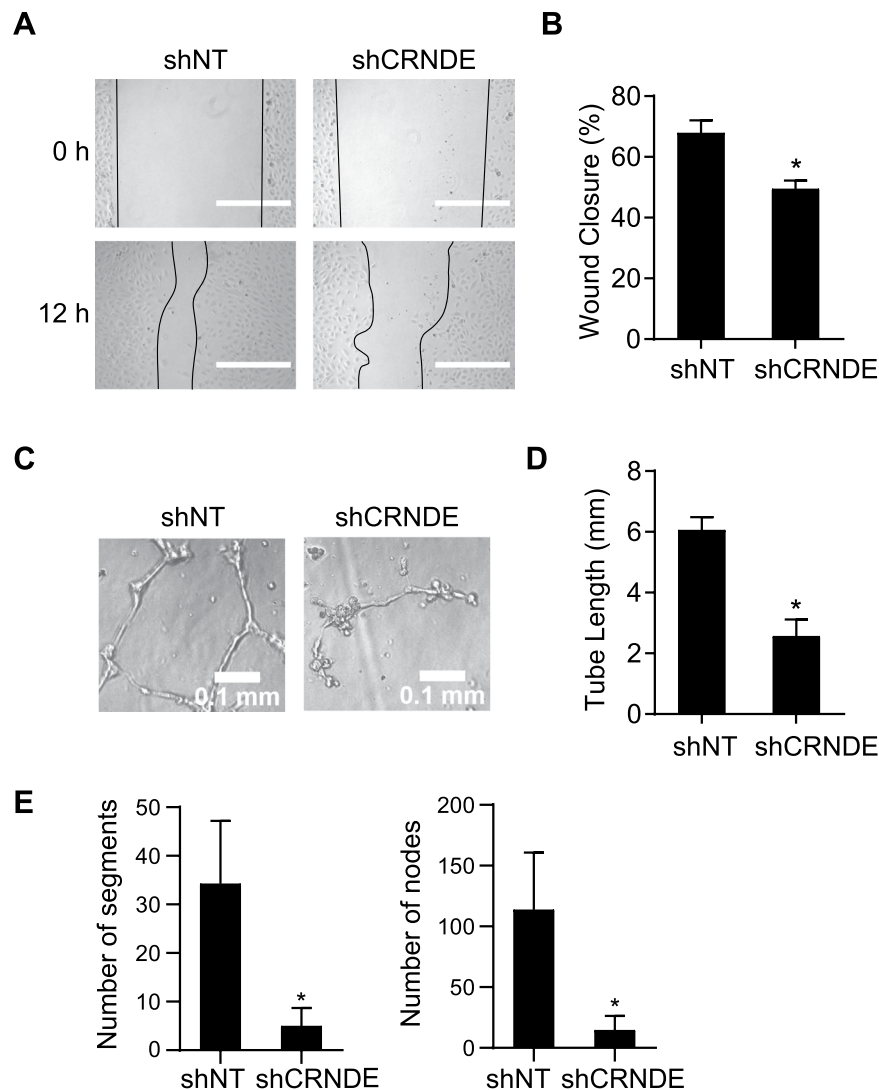


Figure 4. CRNDE knockdown inhibits endothelial cell proliferation and tube formation. (A) CRNDE knockdown reduces wound closure in HUVECs. CRNDE was treated with CRNDE shRNA (shCRNDE) or non-targeting control shRNA (shNT) for 24 h before wounding. Images were taken from fixed cells 12 h after wounding. Representative images of 3 independent experiments were shown. Scale bars are 500 μ m. (B) Quantification of wound closure, $*p = 0.027$. (C) CRNDE knockdown reduces tube formation. HUVECs were treated as in a before being seeded into Matrigel-coated wells. Images were taken from fixed wells after 6 hours. Representative images of 3 independent experiments were shown. (D) Quantification of tube length in millimeters $*p = 3.2 \times 10^{-6}$. (E) Quantification of number of segments ($*p = 9.9 \times 10^{-4}$) and number of nodes ($*p = 6.5 \times 10^{-4}$).

Methods

All methods reported here were carried out in accordance with relevant guidelines and regulations of the University of Nebraska - Lincoln. All experimental protocols were reviewed and approved by the University of Nebraska - Lincoln Institutional Biosafety Committee (Protocol Number: IBC788). The studies in the paper did not involve human tissue samples or human subjects. There are no studies in the manuscript that require ethical approval.

Cell culture. HUVECs from pooled donors (Cat. No. CC-2519) and Human Aortic Endothelial Cells (HAECs) (Cat. No. CC-2535) were purchased from Lonza and cultured in either EGM-2 (Lonza Cat. No. CC-3162) for RNA-seq experiments or Endothelial Cell Growth Medium (ATCC Cat. No. PCS-100-041) supplemented with 1% penicillin-streptomycin for all other experiments. Media was changed every two days during normal passaging. All cells used were between passages 3 and 8. In the tubule formation assay, Endothelial Cell Basal Medium (PromoCell Cat. No. C-22211; hereafter PromoCell EBM) was used where indicated. Cell detachment was carried out with 0.05% trypsin in EDTA (Thermo Fisher). All the experiments were done using three different lots of HUVECs.

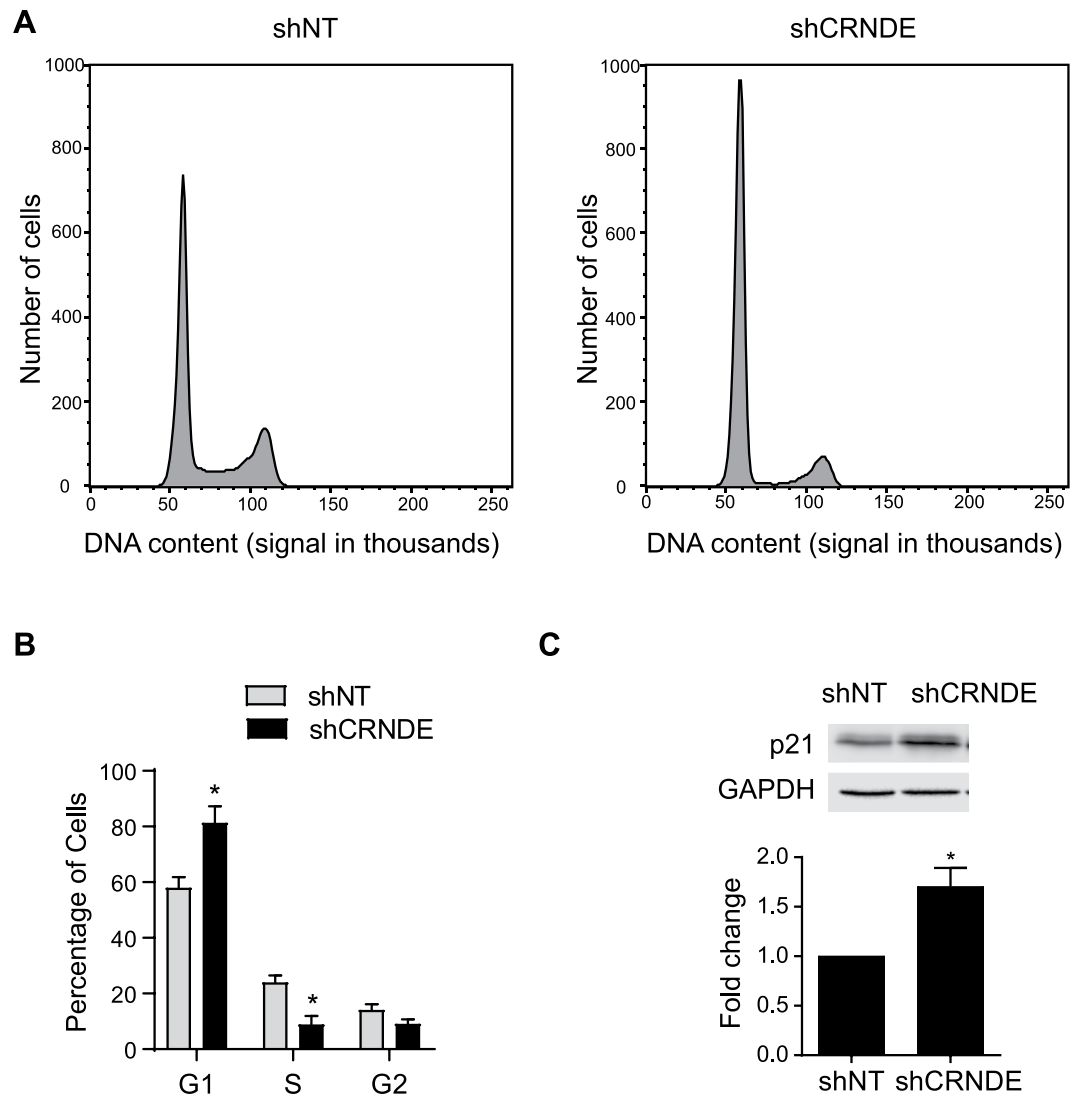


Figure 5. CRNDE knockdown inhibits the progression of cell cycle. **(A)** Histogram of DNA content in HUVECs after CRNDE knockdown. HUVECs were treated with shNT or shCRNDE and then stained with propidium iodide. DNA content was measured by flow cytometry at 488 nm. Representative histograms of three independent experiments were shown. **(B)** Quantification of cell cycle phase in three independent experiments, $*p < 0.05$. **(C)** Western blot analysis of p21 expression and quantification of three independent experiments ($*p = 1.4 \times 10^{-3}$).

RNA sequencing and analysis. HUVECs were treated for 8 h with 100 μ M palmitic acid (NuChuk Prep.) conjugated to fatty-acid poor BSA (EMD Millipore) in a 3 to 1 molar ratio as previously described¹¹. RNA was harvested and rRNA depleted, adaptors were ligated, and the samples sent for sequencing on an Illumina HiSeq 2500. After obtaining raw reads, FastQC was used to analyze the quality of the reads. Tophat2 and bowtie³⁹⁻⁴¹ were used to map the reads to the genome, GRCh38 (Ensembl release 82⁴²), and cufflinks⁴³ was used to determine transcript expression. Cuffdiff⁴⁴ was used to generate FPKM values and edgeR⁴⁵⁻⁴⁸ was used for differential expression analysis. To determine differential expression, the fold change values were transformed by log2 and compared against the log2 fold change values from edgeR, that had a requisite *p*-Value (less than 0.05). Heatmaps were generated using the R pheatmap package. For Fig. 3B, gene names were taken from Ensembl Release 97, eliminating from Supplementary Table 3 those IDs which have been removed from release 97.

KEGG pathway analysis. All significantly differentially expressed genes were used for KEGG pathway enrichment analysis. Using the biological id translator function from R clusterProfiler package⁴⁹, Ensembl IDs were converted to NCBI gene IDs and used for KEGG pathway enrichment analysis. First KEGG pathway enrichment analysis was performed using human metabolic network as a background. *P*-value cut-off was set at 0.05 and Bonferroni-Hochberg adjustment was performed with minimum gene set (GS) size set to 10 and max GS to 500. Finally, KEGG pathway enrichment data was used to generate plots showing linkages of gene and enriched KEGG pathways. The edges of the nodes for reduced genes were manually highlighted with black lines.

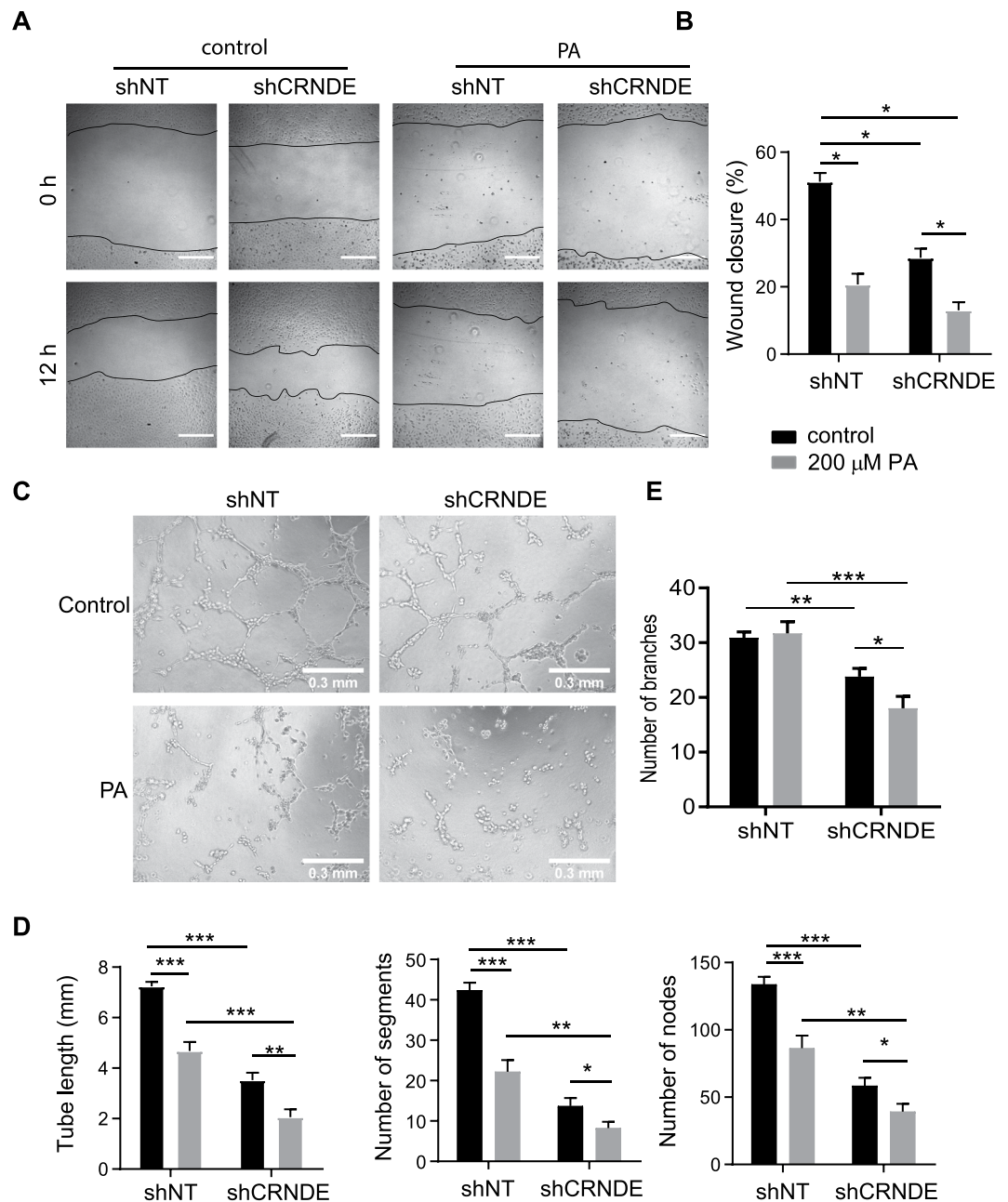


Figure 6. CRNDE knockdown potentiates the inhibitory effects of palmitic acid on endothelial cell migration and tube formation. **(A)** CRNDE knockdown potentiates the inhibitory effects of palmitic acid on wound closure. HUVECs were treated with shNT or shCRNDE for 24 h and then palmitic acid or vehicle control for 12 h before wounding. Images were taken from fixed cells 12 h after wounding. Representative images of 3 independent experiments were shown. Scale bars are 500 μ m. **(B)** Quantification of **(A)** ($*p < 0.001$). **(C)** CRNDE knockdown potentiates the inhibitory effects of palmitic acid on tube formation. HUVECs were treated as for wound healing before being seeded into Matrigel-coated wells. Images were taken from fixed wells after 6 h. Representative images of 3 independent experiments were shown. **(D)** Quantification of tube formation in **(C)**. Tube length in millimeters, the number of segments, and the number of nodes ($*p < 0.05$, $**p < 0.01$, $***p < 1 \times 10^{-4}$). **(E)** Quantification of tube formation in **(C)**. Number of branches ($*p < 0.05$, $**p < 0.001$, $***p < 1 \times 10^{-4}$).

Gene ontology analysis. Differentially expressed mRNAs were analyzed by Genome Set Enrichment Analysis as described previously⁵⁰. GSEA was used to perform Gene Ontology analysis. Enriched terms were reported in upregulated and downregulated genes. To determine differentially enriched gene ontology terms, a false discovery rate of 0.25 was used as a cutoff.

CRNDE shRNA lentiviral generation and HUVEC transduction. The shRNA target sequence GTGTGATGCTTCCATAATACA was cloned into the vector pLKO.1-TRC, a gift from David Root (Addgene plasmid No. 10878) to create shCRNDE. HEK-293T cells were cultured in DMEM supplemented with 10% fetal bovine serum and penicillin/streptomycin (Thermo Fisher). Lentivirus was produced by transfecting HEK-293T cells with the CRNDE-pLKO.1 plasmid using Lipofectamine 2000 (Thermo Fisher). After 24 h transfection, media was collected at 48 h and 72 h post transfection. HUVECs were plated into 12 well plates (100,000 cells/well) and transduced with the appropriate volume of virus to knock down CRNDE. 24 hours post transduction media was changed for downstream applications.

Reverse transcription quantitative PCR. RNA was collected from HUVECs and precipitated using TRIzol Reagent (Thermo Fisher Cat. No. 15596026) according to the manufacturer's instructions. 1 µg of RNA was converted to cDNA using the High Capacity cDNA Reverse Transcription Kit (Thermo Fisher Cat. No. 4368813). qPCR was conducted in the CFX Connect Real Time System (BioRad) using 2x Sybr Green qPCR Master Mix (Bimake Cat. No. B21203). Data was normalized by the DeltaDeltaCt method⁵¹. The primers for qPCR are in Supplementary Table 4.

Scratch assay. HUVECs or HAECs were transduced with CRNDE shRNA (shCRNDE) or a non-targeting control shRNA (shNT) for 24 h and then seeded into 2 wells of a 6-well plate per condition at 600,000 cells per well. After resting for 12 h, cells were treated with or without palmitic acid (100 or 200 µM) for 12 h. After treatment 2 wounds were produced per confluent well and images were obtained. After wound formation, wells were fixed with 2% formaldehyde and images were again taken in the same places. The wound area was measured with ImageJ and the percentage wound closure was calculated by measuring the area of the wound.

Tube formation assay. The tubule formation assay was performed as previously described, with slight modifications²¹. HUVECs or HAECs were transduced as in the scratch assay and then seeded into one well of a 6-well plate at 300,000 cells per well. After 12 h, cells were treated with or without palmitic acid (100 or 200 µM) for 12 h. Cells were then trypsinized and neutralized with PromoCell EBM supplemented with 1% FBS. After centrifugation, HUVECs were resuspended in EBM without FBS and seeded into Matrigel (Corning Cat. No. 254234) coated wells (50 µl per well) at 15,000 cells per well. After 3–6 h, cells were fixed with 4% formaldehyde and 4–6 random images were taken per well, with duplicate wells per condition. Images were then analyzed with ImageJ using the Angiogenesis Analyzer plugin by Giles Carpentier (<http://imagej.nih.gov/ij/macros/toolsets/Angiogenesis%20Analyzer.txt>), and total branching length, number of nodes and number of segments were used as markers of angiogenic tube formation.

Flow cytometry. HUVECs were treated with shCRNDE or shNT for 24 h. 24 h later, cells were fixed in 70% ethanol at 4 °C with a concentration less than 1×10^6 cells per sample. After fixation, cells were treated with 200 µg/ml RNase A and stained with propidium iodide at a final concentration of 10 µg/ml. Cells were then analyzed using the DxP10 FACSort (BD). Data was analyzed using the FlowJo software (BD).

Western blot. HUVECs were treated with shCRNDE or shNT for 24 h. 24 h later, cells were lysed in radio-immunoprecipitation buffer (25 mM Tris-HCl pH 7.6, 150 mM NaCl, 1% NP-40, 1% sodium deoxycholate, 0.1% SDS), and protein concentration determined with the Pierce BCA Protein Assay Kit (Thermo Fisher). 10 µg of protein was loaded per sample and the samples were separated by SDS-PAGE using a 12% acrylamide gel. After SDS-PAGE, the samples were transferred to a polyvinylidene fluoride membrane using the Trans Blot Turbo Transfer System (BioRad; 25 V, 1.0 A, 30 min). After blocking with 5% nonfat milk in TBST, rabbit anti-p21 (Cell Signaling Technology Cat. No. 2974) was used to probe for p21. Then the blot was probed with HRP-conjugated anti-rabbit (Cell Signaling Technology Cat. No. 7074) and the signal was detected by chemiluminescence using the LiCOR Odyssey Fc Imaging System. The blot was stripped using an SDS-glycine stripping buffer (1.5% glycine, 0.1% SDS, 1% Tween 20) and re-probed with rabbit anti-GAPDH (Cell Signaling Technology Cat. No. 2118). GAPDH was detected in the same way as p21.

Statistical analysis. All experimental data is the average of three independent experiments, reported as mean ± standard error, unless otherwise stated. All statistical analysis was carried out using two-tailed Student's t-test with an alpha level of 0.05. All comparisons were to the control, unless otherwise stated.

Data availability

The RNA-seq data generated in this manuscript is available through the Gene Expression Omnibus⁵² (GSE141126): <https://www.ncbi.nlm.nih.gov/geo/query/acc.cgi?acc=GSE141126>.

Received: 17 July 2019; Accepted: 5 December 2019;

Published online: 20 December 2019

References

1. American Diabetes, A. Economic Costs of Diabetes in the U.S. in 2017. *Diabetes Care* **41**, 917–928, <https://doi.org/10.2337/dci18-0007> (2018).
2. Cheng, R. & Ma, J. X. Angiogenesis in diabetes and obesity. *Rev Endocr Metab Disord* **16**, 67–75, <https://doi.org/10.1007/s11154-015-9310-7> (2015).
3. Krock, B. L., Skuli, N. & Simon, M. C. Hypoxia-induced angiogenesis: good and evil. *Genes & cancer* **2**, 1117–1133, <https://doi.org/10.1177/1947601911423654> (2011).
4. Esteller, M. Non-coding RNAs in human disease. *Nature reviews. Genetics* **12**, 861–874, <https://doi.org/10.1038/nrg3074> (2011).

5. Leisegang, M. S. *et al.* Long Noncoding RNA MANTIS Facilitates Endothelial Angiogenic Function. *Circulation* **136**, 65–79, <https://doi.org/10.1161/CIRCULATIONAHA.116.026991> (2017).
6. Michalik, K. M. *et al.* Long noncoding RNA MALAT1 regulates endothelial cell function and vessel growth. *Circulation research* **114**, 1389–1397, <https://doi.org/10.1161/CIRCRESAHA.114.303265> (2014).
7. Thomas, A. A., Feng, B. & Chakrabarti, S. ANRIL: A Regulator of VEGF in Diabetic Retinopathy. *Investigative ophthalmology & visual science* **58**, 470–480, <https://doi.org/10.1167/iovs.16-20569> (2017).
8. Yan, B. *et al.* lncRNA-MIAT regulates microvascular dysfunction by functioning as a competing endogenous RNA. *Circulation research* **116**, 1143–1156, <https://doi.org/10.1161/CIRCRESAHA.116.305510> (2015).
9. Grundy, S. M. Metabolic complications of obesity. *Endocrine* **13**, 155–165, <https://doi.org/10.1385/ENDO:13:2:155> (2000).
10. Laws, A. *et al.* Differences in insulin suppression of free fatty acid levels by gender and glucose tolerance status. Relation to plasma triglyceride and apolipoprotein B concentrations. Insulin Resistance Atherosclerosis Study (IRAS) Investigators. *Arteriosclerosis, thrombosis, and vascular biology* **17**, 64–71 (1997).
11. Kim, F. *et al.* Free fatty acid impairment of nitric oxide production in endothelial cells is mediated by IKKbeta. *Arteriosclerosis, thrombosis, and vascular biology* **25**, 989–994, <https://doi.org/10.1161/01.ATV.0000160549.60980.a8> (2005).
12. Wang, X. L. *et al.* Free fatty acids inhibit insulin signaling-stimulated endothelial nitric oxide synthase activation through upregulating PTEN or inhibiting Akt kinase. *Diabetes* **55**, 2301–2310, <https://doi.org/10.2337/db05-1574> (2006).
13. Inoguchi, T. *et al.* High glucose level and free fatty acid stimulate reactive oxygen species production through protein kinase C-dependent activation of NAD(P)H oxidase in cultured vascular cells. *Diabetes* **49**, 1939–1945, <https://doi.org/10.2337/diabetes.49.11.1939> (2000).
14. Maloney, E. *et al.* Activation of NF-kappaB by palmitate in endothelial cells: a key role for NADPH oxidase-derived superoxide in response to TLR4 activation. *Arteriosclerosis, thrombosis, and vascular biology* **29**, 1370–1375, <https://doi.org/10.1161/ATVBAHA.109.188813> (2009).
15. Mao, Y. *et al.* STING-IRF3 Triggers Endothelial Inflammation in Response to Free Fatty Acid-Induced Mitochondrial Damage in Diet-Induced Obesity. *Arteriosclerosis, thrombosis, and vascular biology* **37**, 920–929, <https://doi.org/10.1161/ATVBAHA.117.309017> (2017).
16. Kornienko, A. E. *et al.* Long non-coding RNAs display higher natural expression variation than protein-coding genes in healthy humans. *Genome biology* **17**, 14, <https://doi.org/10.1186/s13059-016-0873-8> (2016).
17. Wei, Y., Wang, D., Topczewski, F. & Pagliassotti, M. J. Saturated fatty acids induce endoplasmic reticulum stress and apoptosis independently of ceramide in liver cells. *American journal of physiology. Endocrinology and metabolism* **291**, E275–281, <https://doi.org/10.1152/ajpendo.00644.2005> (2006).
18. Zhang, Y., Xue, R., Zhang, Z., Yang, X. & Shi, H. Palmitic and linoleic acids induce ER stress and apoptosis in hepatoma cells. *Lipids in health and disease* **11**, 1, <https://doi.org/10.1186/1476-511X-11-1> (2012).
19. Melincovici, C. S. *et al.* Vascular endothelial growth factor (VEGF) - key factor in normal and pathological angiogenesis. *Romanian journal of morphology and embryology = Revue roumaine de morphologie et embryologie* **59**, 455–467 (2018).
20. Ayer, A., Zarjou, A., Agarwal, A. & Stocker, R. Heme Oxygenases in Cardiovascular Health and Disease. *Physiological reviews* **96**, 1449–1508, <https://doi.org/10.1152/physrev.00003.2016> (2016).
21. Xie, D., Ju, D., Speyer, C., Gorski, D. & Kosir, M. A. Strategic Endothelial Cell Tube Formation Assay: Comparing Extracellular Matrix and Growth Factor Reduced Extracellular Matrix. *Journal of visualized experiments: JoVE*, <https://doi.org/10.3791/54074> (2016).
22. Yuan, L. *et al.* Palmitic acid dysregulates the Hippo-YAP pathway and inhibits angiogenesis by inducing mitochondrial damage and activating the cytosolic DNA sensor cGAS-STING-IRF3 signaling mechanism. *The Journal of biological chemistry* **292**, 15002–15015, <https://doi.org/10.1074/jbc.M117.804005> (2017).
23. Ellis, B. C., Graham, L. D. & Molloy, P. L. CRNDE, a long non-coding RNA responsive to insulin/IGF signaling, regulates genes involved in central metabolism. *Biochimica et biophysica acta* **1843**, 372–386, <https://doi.org/10.1016/j.bbamcr.2013.10.016> (2014).
24. Huan, J., Xing, L., Lin, Q., Xui, H. & Qin, X. Long noncoding RNA CRNDE activates Wnt/beta-catenin signaling pathway through acting as a molecular sponge of microRNA-136 in human breast cancer. *American journal of translational research* **9**, 1977–1989 (2017).
25. Zhou, Y. *et al.* lncRNA CRNDE regulates the proliferation and migration of vascular smooth muscle cells. *Journal of cellular physiology*, <https://doi.org/10.1002/jcp.28284> (2019).
26. Zheng, D. *et al.* Long noncoding RNA Crnde attenuates cardiac fibrosis via Smad3-Crnde negative feedback in diabetic cardiomyopathy. *The FEBS journal* **286**, 1645–1655, <https://doi.org/10.1111/febs.14780> (2019).
27. Monia, B. P. *et al.* Evaluation of 2'-modified oligonucleotides containing 2'-deoxy gaps as antisense inhibitors of gene expression. *The Journal of biological chemistry* **268**, 14514–14522 (1993).
28. Kurreck, J., Wyszko, E., Gillen, C. & Erdmann, V. A. Design of antisense oligonucleotides stabilized by locked nucleic acids. *Nucleic acids research* **30**, 1911–1918, <https://doi.org/10.1093/nar/30.9.1911> (2002).
29. Amodio, N. *et al.* Drugging the lncRNA MALAT1 via LNA gapmeR ASO inhibits gene expression of proteasome subunits and triggers anti-multiple myeloma activity. *Leukemia* **32**, 1948–1957, <https://doi.org/10.1038/s41375-018-0067-3> (2018).
30. Piccoli, M. T. *et al.* Inhibition of the Cardiac Fibroblast-Enriched lncRNA Meg3 Prevents Cardiac Fibrosis and Diastolic Dysfunction. *Circulation research* **121**, 575–583, <https://doi.org/10.1161/CIRCRESAHA.117.310624> (2017).
31. Shihabudeen Haider Ali, M. S. *et al.* lncRNA Meg3 protects endothelial function by regulating the DNA damage response. *Nucleic acids research* **47**, 1505–1522, <https://doi.org/10.1093/nar/gky1190> (2019).
32. Rader, D. J. & Kastelein, J. J. Lomitapide and mipomersen: two first-in-class drugs for reducing low-density lipoprotein cholesterol in patients with homozygous familial hypercholesterolemia. *Circulation* **129**, 1022–1032, <https://doi.org/10.1161/CIRCULATIONAHA.113.001292> (2014).
33. Amodio, G., Moltedo, O., Faraonio, R. & Remondelli, P. Targeting the Endoplasmic Reticulum Unfolded Protein Response to Counteract the Oxidative Stress-Induced Endothelial Dysfunction. *Oxidative medicine and cellular longevity* **2018**, 4946289, <https://doi.org/10.1155/2018/4946289> (2018).
34. Simon, A. R., Rai, U., Fanburg, B. L. & Cochran, B. H. Activation of the JAK-STAT pathway by reactive oxygen species. *The American journal of physiology* **275**, C1640–1652, <https://doi.org/10.1152/ajpcell.1998.275.6.C1640> (1998).
35. Zhu-Ge, D., Yang, Y. P. & Jiang, Z. J. Knockdown CRNDE alleviates LPS-induced inflammation injury via FOXM1 in WI-38 cells. *Biomedicine & pharmacotherapy = Biomedecine & pharmacotherapie* **103**, 1678–1687, <https://doi.org/10.1016/j.biopha.2018.04.192> (2018).
36. Shi, Y. *et al.* Up-regulation of HO-1 by Nrf2 activation protects against palmitic acid-induced ROS increase in human neuroblastoma BE(2)-M17 cells. *Nutr Res* **52**, 80–86, <https://doi.org/10.1016/j.nutres.2018.02.003> (2018).
37. Zhu, H. & Kong, L. lncRNA CRNDE regulates trophoblast cell proliferation, invasion, and migration via modulating miR-1277. *American journal of translational research* **11**, 5905–5918 (2019).
38. Ding, J. *et al.* Long noncoding RNA CRNDE promotes colorectal cancer cell proliferation via epigenetically silencing DUSP5/CDKN1A expression. *Cell death & disease* **8**, e2997, <https://doi.org/10.1038/cddis.2017.328> (2017).
39. Langmead, B., Trapnell, C., Pop, M. & Salzberg, S. L. Ultrafast and memory-efficient alignment of short DNA sequences to the human genome. *Genome biology* **10**, R25, <https://doi.org/10.1186/gb-2009-10-3-r25> (2009).

40. Kim, D. *et al.* TopHat2: accurate alignment of transcriptomes in the presence of insertions, deletions and gene fusions. *Genome biology* **14**, R36, <https://doi.org/10.1186/gb-2013-14-4-r36> (2013).
41. Langmead, B. & Salzberg, S. L. Fast gapped-read alignment with Bowtie 2. *Nat Methods* **9**, 357–359, <https://doi.org/10.1038/nmeth.1923> (2012).
42. Zerbino, D. R. *et al.* Ensembl 2018. *Nucleic acids research* **46**, D754–D761, <https://doi.org/10.1093/nar/gkx1098> (2018).
43. Trapnell, C. *et al.* Transcript assembly and quantification by RNA-Seq reveals unannotated transcripts and isoform switching during cell differentiation. *Nature biotechnology* **28**, 511–515, <https://doi.org/10.1038/nbt.1621> (2010).
44. Trapnell, C. *et al.* Differential analysis of gene regulation at transcript resolution with RNA-seq. *Nature biotechnology* **31**, 46–53, <https://doi.org/10.1038/nbt.2450> (2013).
45. Robinson, M. D., McCarthy, D. J. & Smyth, G. K. edgeR: a Bioconductor package for differential expression analysis of digital gene expression data. *Bioinformatics* **26**, 139–140, <https://doi.org/10.1093/bioinformatics/btp616> (2010).
46. R: A Language and Environment for Statistical Computing (R Foundation for Statistical Computing, Vienna, Austria, 2018).
47. McCarthy, D. J., Chen, Y. & Smyth, G. K. Differential expression analysis of multifactor RNA-Seq experiments with respect to biological variation. *Nucleic acids research* **40**, 4288–4297, <https://doi.org/10.1093/nar/gks042> (2012).
48. Anders, S. *et al.* Count-based differential expression analysis of RNA sequencing data using R and Bioconductor. *Nat Protoc* **8**, 1765–1786, <https://doi.org/10.1038/nprot.2013.099> (2013).
49. Yu, G., Wang, L. G., Han, Y. & He, Q. Y. clusterProfiler: an R package for comparing biological themes among gene clusters. *Omic: a journal of integrative biology* **16**, 284–287, <https://doi.org/10.1089/omi.2011.0118> (2012).
50. Subramanian, A. *et al.* Gene set enrichment analysis: a knowledge-based approach for interpreting genome-wide expression profiles. *Proceedings of the National Academy of Sciences of the United States of America* **102**, 15545–15550, <https://doi.org/10.1073/pnas.0506580102> (2005).
51. Livak, K. J. & Schmittgen, T. D. Analysis of relative gene expression data using real-time quantitative PCR and the 2⁻(Delta Delta C(T)) Method. *Methods* **25**, 402–408, <https://doi.org/10.1006/meth.2001.1262> (2001).
52. Barrett, T. *et al.* NCBI GEO: archive for functional genomics data sets—update. *Nucleic acids research* **41**, D991–995, <https://doi.org/10.1093/nar/gks1193> (2013).

Acknowledgements

We would like to thank Dirk Anderson of the Flow Cytometry core of the University of Nebraska-Lincoln for his assistance. This work was supported by the National Institutes of Health Funded COBRE grant 1P20GM104320 (X.S. through the Nebraska Center for the Prevention of Obesity-related Diseases through Dietary Molecules), the American Heart Association SDG#15SDG25400012 (X.S.), and the National Institutes of Health Funded T32 grant 5T32GM107001-04 (M.M.). All authors read, provided feedback on, and approved the manuscript for publication.

Author contributions

M.M. and X.S. wrote the manuscript. M.M., X.C., M.H.A., N.N. performed the experiments; N.W., W.Y., C.Z. assisted with data analysis; and X.S. and C.D. provided inspiration and designed the experiments.

Competing interests

The authors declare no competing interests.

Additional information

Supplementary information is available for this paper at <https://doi.org/10.1038/s41598-019-56030-9>.

Correspondence and requests for materials should be addressed to X.S.

Reprints and permissions information is available at www.nature.com/reprints.

Publisher's note Springer Nature remains neutral with regard to jurisdictional claims in published maps and institutional affiliations.



Open Access This article is licensed under a Creative Commons Attribution 4.0 International License, which permits use, sharing, adaptation, distribution and reproduction in any medium or format, as long as you give appropriate credit to the original author(s) and the source, provide a link to the Creative Commons license, and indicate if changes were made. The images or other third party material in this article are included in the article's Creative Commons license, unless indicated otherwise in a credit line to the material. If material is not included in the article's Creative Commons license and your intended use is not permitted by statutory regulation or exceeds the permitted use, you will need to obtain permission directly from the copyright holder. To view a copy of this license, visit <http://creativecommons.org/licenses/by/4.0/>.

© The Author(s) 2019