

Illinois State University

ISU ReD: Research and eData

School of Music Programs

Music

Spring 4-6-2019

I Pagliacci

John M. Koch Conductor
Illinois State University

Follow this and additional works at: <https://ir.library.illinoisstate.edu/somp>



Part of the [Music Performance Commons](#)

Recommended Citation

Koch, John M. Conductor, "I Pagliacci" (2019). *School of Music Programs*. 3851.
<https://ir.library.illinoisstate.edu/somp/3851>

This Concert Program is brought to you for free and open access by the Music at ISU ReD: Research and eData. It has been accepted for inclusion in School of Music Programs by an authorized administrator of ISU ReD: Research and eData. For more information, please contact ISUReD@ilstu.edu.

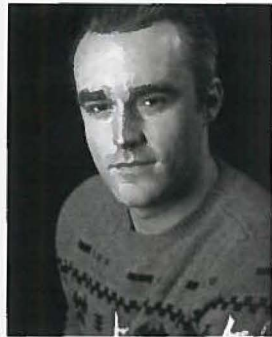


Anthony Gullo, Silvio

Anthony Gullo, baritone, has performed in *Les Contes d'Hoffmann* (The Four Villains), *Carmen* (Escamillo), *Le nozze di Figaro* (title role), *Aida* (Ramfis), *Don Giovanni* (Leporello), *Falstaff* (Ford), and *La cenerentola* (Alidoro) with the Midwest Institute of Opera. Additionally, Anthony participated in the world premiere of Griffin Candey's opera *Sweets by Kate*, singing the role of Joe Briggmann. He also performed *HMS Pinafore* (Captain Corcoran) with the Vermillion Players and in *Die Fledermaus* (Falke), and *Amahl and the Night Visitors* (Melchior) while studying at Carthage College.

Mr. Gullo has had numerous musical theatre roles with the Vermillion Players and Carthage College Theatre including Albert in *Bye Bye Birdie* and Hucklebee in *The Fantasticks*. February 2019 sees Mr. Gullo performing in *I Love You, You're Perfect, Now Change*. Mr. Gullo has directed productions with Vermillion Players as well: *The 25th Annual Putnam County Spelling Bee* in 2014, *The Producers* in 2017, *Bingo! The Winning Musical* in 2018, and he will be adding *Guys and Dolls* to his directorial and conducting credits in 2019.

Gullo has also been featured in the Illinois State Civic Chorale as a baritone soloist in Duruflé's *Requiem*, Rutter's *Mass for the Children* and as a bass soloist in Handel's *Messiah*.



Macauley Allen, Beppe

Macauley Allen, tenor, of Monticello, Illinois is a second-year vocal performance Master's student at Illinois State University, where he also earned his Bachelor's degree in vocal performance. He made his operatic debut as Rinuccio in ISU's 2015 production of Puccini's *Gianni Schicchi*, a role he will be reprising this April. Macauley has performed several notable roles during his time at ISU, including Prince Phillippe in Lennox Berkeley's *A Dinner Engagement* (2015), Daniel Buchanan in Kurt Weill's *Street Scene* (2016), Ferrando in Mozart's *Così fan tutte* (2018) in addition to performing select scenes from Bernstein's *Candide* (in the title

role) and Donizetti's *L'elisir d'amore* (as Nemorino). He made his MIO debut in 2016 as Fenton in Verdi's *Falstaff*, and also participated in MIO's 2018 season, performing the roles of Spalanzani and Franz in Offenbach's *Les contes d'Hoffmann* and Frederic in Gilbert and Sullivan's *The Pirates of Penzance*. Macauley has been a member of the Illinois State University Civic Chorale since 2016. He was a featured soloist in last spring's performance of Schubert's *Liebeslieder Waltzes* and most recently participated in Civic Chorale's 50th Anniversary Concert in November 2018.

ILLINOIS STATE UNIVERSITY
College of Fine Arts & School of Music

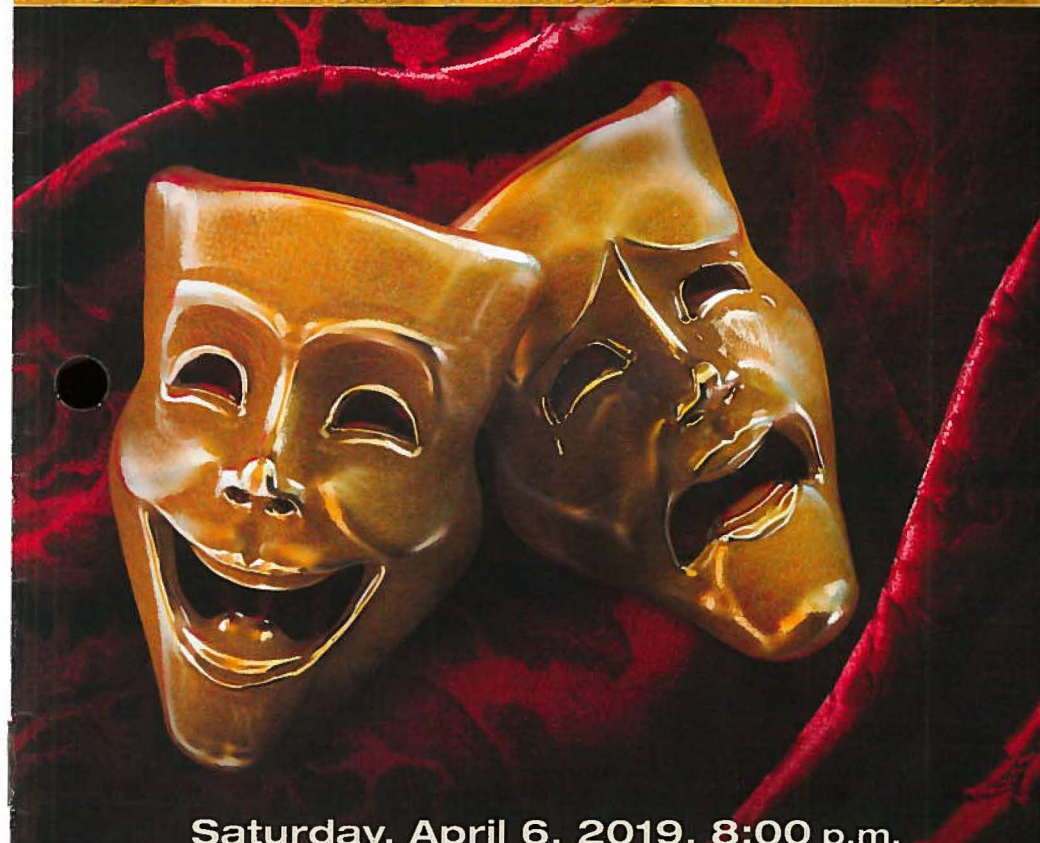
ISU Civic Chorale and MIOpera presents:

LEONCAVALLO'S I PAGLIACCI

John M. Koch, conductor

ISU Civic Chorale • PERFORMED WITH THE MIOPERA FESTIVAL ORCHESTRA

SUNG IN ITALIAN WITH ENGLISH SUPERSTITLES



Saturday, April 6, 2019, 8:00 p.m.

Illinois State University Center for the Performing Arts Concert Hall

Tickets available at the CPA Box Office (309) 438-2535

50th Anniversary
Illinois State University
Civic Chorale miOpera

Like us on Facebook:



finearts.illinoisstate.edu



Illinois State University
College of Fine Arts and School of Music
ISU Civic Chorale
Presents:

I Pagliacci

Premiere, Teatro dal Verme, Milan, Italy, May 21, 1892
New York Premiere, June, 1893

Music and Libretto by Ruggero Leoncavallo (1857-1919)
A verismo opera in a prologue and two acts

Cast of characters

Tonio, a clown Stephen Hobe, Baritone
Canio, head of a travelling theatre troop Allan Glassman, Tenor
Nedda, Canio's wife Katherine Weber, Soprano
Beppe, a member of the troop Macauley Allen, Tenor
Silvio, a young peasant Anthony Gullo, Baritone
First villager David Edmondson, Tenor
Second villager Matthew Mancillas, Baritone
The Illinois State University Civic Chorale Chorus of villagers

John M. Koch, Conductor
Dennis Gotkowski, Assistant Conductor

MIOpera Festival Orchestra

Alex Hunter, Flute
Judith Dicker, Oboe
Anne Dervin, Clarinet
Michael Dicker, Bassoon
Rachel Hockenberry, Horn
Patricia Foltz, Piano
Adriana Lizardi, Double Bass
Matthew James, Percussion

Chamber orchestration by Michael Withers, Theatre Music Editions, United Kingdom

The Story of I Pagliacci

Prologue

Tonio the clown announces that what the audience is about to see is a true story and that actors have the same joys and sorrows as other people.

Act I

A small theatrical company has just arrived and Canio, the head of the troupe, advertises the night's performance to the crowd. One of the villagers suggests that Tonio is secretly courting Canio's young wife, Nedda. Canio warns them all that if he found Nedda with a lover the consequences would be deadly. As the crowd leaves Nedda is alone, upset by her husband's jealousy. She looks to the sky, envying the birds their freedom, singing Stridono lassù. Tonio appears and tries to force himself on her but she beats him back and he retreats, swearing revenge. In fact, Nedda does have a lover—Silvio, a young peasant, who suddenly appears. The two reaffirm their love and Silvio persuades Nedda to run away with him that night. Tonio, who has returned and overheard the end of their conversation, hurries to tell Canio, but Silvio manages to slip away. Canio threatens Nedda but she refuses to reveal her lover's name. Beppe, another member of the troupe, restrains Canio, and Tonio advises him to wait until the evening's performance to catch the culprit. Alone, Canio gives in to his despair—he must still play the clown in the aria *Vesti la giubba*.

Fifteen minute intermission

Act II

That evening, the villagers assemble to watch the performance, Silvio among them. Beppe plays Arlecchin, who serenades Columbina, played by Nedda. He dismisses her buffoonish servant Taddeo, played by Tonio, and over dinner the two lovers plot to poison Columbina's husband Pagliaccio, played by Canio. When Pagliaccio unexpectedly appears, Arlecchin slips away. Taddeo maliciously assures Pagliaccio of his wife's innocence, which ignites Canio's jealousy. Forgetting his role and the play, he demands that Nedda tell him the name of her lover. She tries to continue with the performance, the audience enthralled by its realism, until Canio snaps. In a fit of rage he stabs Nedda and then Silvio, who rushes to her aid. Turning to the horrified crowd, Canio announces that the comedy is over.

Please silence all cell phones and electronic devices for the duration of the concert.
Flash photography is strictly forbidden.

ISU Civic Chorale, Spring 2019

The Illinois State University Civic Chorale Excellence Fund

The Civic Chorale Excellence Fund was established as part of its 50th Anniversary celebration in 2018. This fund enables the purchase of new music and the engagement of guest artists and instrumentalists. In addition to securing tenor Allan Glassman from the Metropolitan Opera for the title role in tonight's *I Pagliacci*, we also provided honoraria for guest musicians that were a driving force in the success of the two major works by John Rutter at the 50th Anniversary Gala. As Civic Chorale expands its performance venues, the Excellence Fund will also help pay travel expenses and costs of future productions.

We greatly appreciate your presence at this Civic Chorale concert, and we hope that you will join us at future concerts. Any monetary gift to the Civic Chorale Excellence Fund is tax-deductible and should be mailed directly to: ISU Foundation, Illinois State University, Campus Box 8000, Normal, IL 61790-8000. Please make checks payable to the ISU Civic Chorale Excellence Fund.

Special thanks to:

Doug Smith, Director of Learning Spaces & Audio/Visual Technologies

Shawn Billo, CTLT

Jim Kalmbach

Patty Foltz

Tim Schachtschneider

Chuck Beck

Michael Withers, Theatre Music Editions

Student Members

Macauley Allen
Stephanie An
Joshua Anderson
Jake Batara
Andy Bibler
April Bolich
Madisyn Boykin
Jeff Burke
Bethany Busch
Aelsa Butler
Mickey Byrne
Mel Campbell
Rachel Cremer
Leah Crews
Lauren Crumble
Nicole Cuevas
Erika Dowd
Ye Eun Eom
Julia Fraczek
Matt Garee
Yuwei Guo
Anna Janaszak
Taeyeong Jung
Ching I Kuo
Jessica Lamberty
Cassidy Lemrise
Matthew Mancillas
Taylor Matos
Celine McLaughlin

Sidney Megeff
Blythe Neese
Joshua Niemann
Louisa Peng
Evan Porter
Mark Richins
John Rotap
Destiny Rowe
Elizabeth Salvador
Ashlie Schlatweiler*
Berlin Schlegel
Christopher Schmidt
Ben Schulz
Yangyang Tai
Colleen Thomas
Lauren Weber
Haley Youhas
Adam Zasada

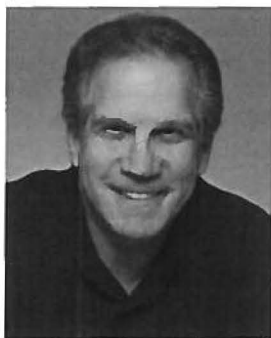
Community Members

Louise Andrew
Susan Burt
Bev Collins
David Edmondson
Judy Esh
Char Fesler
Earl Grim
Jan Grim
Cheri Grizzard

Janet Grupp
Anthony Gullo
Andrea Helmer
Ed Hines
Judy Hines
Li Huang
James Kalmbach**
Douglas Kaufman-Dickson
Hayley Koch
Tracy Marie Koch
Sonja Larson-Strieff
Karen LaVoie
Andrew Loy
Rachel Kay Miller
Lauren Palmer
Stuart Palmer
Susan Palmer
Abby Palmisano
Janna Peterson
Jim Reid
Annilee Rohrscheib
Grace Shanks
Tina Sipula
Debi Terfruchte
Tamera Turner
Mary Van Deven
Kevin Yale Vernon
Jean Wallace
Chris Wiman
*Graduate Assistant
**Program design

Illinois State University
CIVIC Chorale
50th Anniversary

The Performers



Allan Glassman, Canio

Tenor **Allan Glassman** has thrilled audiences throughout America and Europe for decades with his vibrant timbre and committed interpretations of roles. Critics exclaim "his very presence on stage made those around him sound better." A regular at The Metropolitan Opera, Mr. Glassman triumphed as Herod in a production of *Salome* and has since been heard in The Met's productions of *Billy Budd*, *Die Frau ohne Schatten*, *Lady Macbeth of Mtsensk District*, *Boris Godunov*, *The Great Gatsby*, *Carmen*, *Elektra*, *Katya Kabanova*, *The Ghost of Versailles*, Mussorgsky's *Khovanshchina* and *Wozzeck*.

Mr. Glassman has performed the role of Herod in *Salome* to wide acclaim in opera venues throughout the world. Critics wrote: "His fear and distress seemed to come from his heart and soul."

Mr. Glassman's impressive career includes many title roles in some of opera's most notable works, including Samson in *Samson et Dalila*, Hoffmann in *Les contes d'Hoffmann*, and *Idomeneo* at Los Angeles Opera where he was double cast with the tenor Plácido Domingo. Hailed as the *Otello* of his generation: "Glassman is a full-on Verdian tenor... Glassman is more than equal to the demands of the role conveying Otello's pain and suspicion vividly." In past seasons, he has performed the role with Opera Company of Philadelphia, Arizona Opera, Palm Beach Opera, Dallas Opera, Des Moines Metro Opera, and at Chautauqua Opera.

Sought after by orchestras worldwide, Mr. Glassman maintains an active concert calendar. Notable engagements include: Verdi's *Requiem* with L'Opéra de Nice, Mahler's *Das Lied von der Erde* with the Orquesta Sinfónica de Xalapa in Mexico, and Erik in *Der fliegende Holländer* in concert with the Syracuse Opera. We are honored that Mr. Glassman is able to perform our title role this evening!



Katherine Weber, Nedda

Katherine Weber, an American soprano from Holmen, Wisconsin, is recognized for her steely voice and is at the start of what is to be an exciting career. Most recently, she performed the role of Rosalinde in *Die Fledermaus* with New Philharmonic in Chicago and made her Chicago Opera Theater debut performing the role of Iolanta in *Iolanta* by Tchaikovsky. *The Chicago Tribune*

stated, "[Ms Weber's] was the most formidable voice in a consistently strong cast,

her top register soaring easily above the most densely written choral passages." This is after making her Chicago debut portraying the role of Violetta in *La Traviata* with DuPage Opera. She also performed the role with Aspen Music Festival which *Aspen Times* praised for her "level of dignity and vulnerability with her acting and a voice that hit high notes with a steely edge and caressed the mid-range with welcome warmth." *Opera News* claimed, "she had little trouble with the role's many vocal and dramatic challenges, which served to showcase a confident singing actress with a magnetic stage presence and abundant potential." Ms Weber has truly made this role her own and has also performed *La Traviata* with Boulder Symphony and Central City Opera. She has also had the opportunity to cover the role of Nedda in *Pagliacci* with Virginia Opera as well as Kitty Hart in *Deadman Walking* with Central City Opera. Katherine has won numerous awards from the Upper Midwest and Midwest regions of the Metropolitan Opera National Council auditions, Schubert Club, Florentine Opera, and Central City Opera.



Stephen Hobe, Tonio

Gifted in musical theatre and opera genres, baritone **Stephen Hobe** has flourished in classical and crossover repertoire in his hometown of Chicago. Mr. Hobe is "a generous performer," lauded for his charismatic and often quirky performances of particularly English and Italian repertoire. Mr. Hobe studied paleontology and music theatre at Carthage College, then moved on to operatic repertoire in his Master's degree at Roosevelt University's Chicago College of Performing Arts, studying with Kurt Link. This past summer, Mr. Hobe toured Eastern Wis-

consin as a member of Florentine Opera's Summer Concert Quartet. Mr. Hobe is currently a Studio Artist with Madison Opera, where he performed *Cavalleria rusticana*, *Pagliacci*, and *A little night music*. Recent credits also include *Cunning little vixen* at Roosevelt University, *Patience and Sarah* with Third Eye Theatre Ensemble, *Le comte d'Ory* with Transgressive Theatre-Opera, and *Gianni Schicchi* with the St. Petersburg Opera.