

1974

# Honeyhome

Edwin E. (Edwin Earnest) Meek (1940-)

Follow this and additional works at: [https://egrove.olemiss.edu/meek\\_pub](https://egrove.olemiss.edu/meek_pub)



Part of the [Architecture Commons](#)

---

## Recommended Citation

Meek (1940-), Edwin E. (Edwin Earnest), "Honeyhome" (1974). *Publications*. 5.  
[https://egrove.olemiss.edu/meek\\_pub/5](https://egrove.olemiss.edu/meek_pub/5)

This Book is brought to you for free and open access by the Ed Meek Collection at eGrove. It has been accepted for inclusion in Publications by an authorized administrator of eGrove. For more information, please contact [egrove@olemiss.edu](mailto:egrove@olemiss.edu).



# honeyhome











Spacious bedrooms, rich natural wood siding and decks are features which distinguish the Honeyhome. A unique modular design inspired by nature allows you to enjoy the great outdoors year-round.





Honeyhome  
Is  
Your Home...  
Whatever You Want  
Your Home To Be





# Simple Elegance

Honeyhome is a new idea which combines standard construction with a unique pre-construction technique. The result is a custom home tailored to individual tastes with great savings in costs.

Honeyhome's patented modular design makes the most efficient use of space, saving you high construction costs and there's added savings in reduced energy costs. Honeyhome is the perfect first home, vacation home, or your custom dream home.





# A Honey Of A Dream Come True

Honeyhome's patented construction design makes your dream of more house for less money come true. And, there is no sacrifice of quality, beauty or flexibility!

QUALITY...the best materials and nature's most handsome woods

BEAUTY...architectural beauty as individual as your personality

FLEXIBILITY...build or add to Honeyhome with total freedom

And ECONOMY that is only possible through the patented Honeyhome building system which gives you more usable space without added costs.

## Unique Design

The Honeyhome is available in all price ranges from our remarkable one, two and three bedroom homes to custom designed homes that fulfill any dream. Our patented Honeyhome module design significantly lowers construction costs. Modules interconnect freely allowing total flexibility and absolute conservation of space. Little used corners and hallways are eliminated in the Honeyhome and the result is more usable space and construction costs well below conventional construction methods.

## Energy Savings

Honeyhomes are over-insulated by today's standards with six inches of insulation in the ceilings and floors and four inches in the walls. Heating and cooling costs are additionally lowered with the elimination of hallways and corner spaces. The need for continuous operation of air conditioning systems is lessened because windows are opposite each other, allowing the Honeyhome to ventilate itself.







# As Versatile As Your Imagination

Honeyhome's polygonal shaped module efficiently combines traditional construction techniques and structural features which saves (us) time as it saves (you) money. The Honeyhome system is adaptable to any building need and in every case there is great savings in construction costs.

The variety of designs using the Honeyhome system are limitless. Our Honeyhome apartment designs offer the most attractive investment return possible. Vacation homes which are uniquely designed to fit individual needs are possible at significant savings. In fact, anything you might consider building from a bachelor pad to an office or business complex can be made more attractive—in price and beauty—with the Honeyhome system.

## Years Of Research

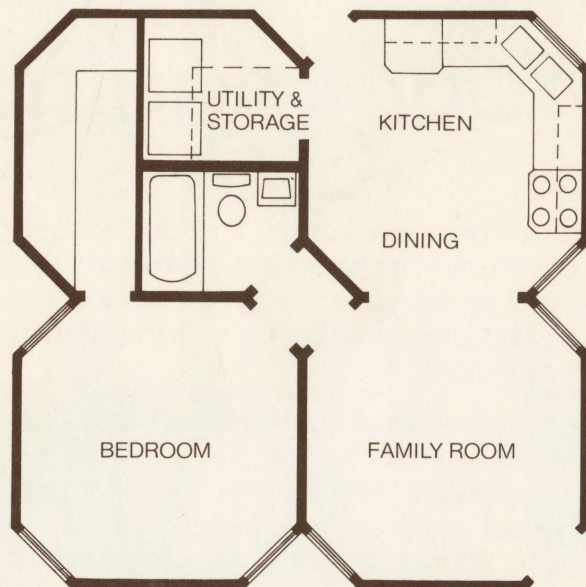
The Honeyhome building system is the result of eight years of research. Utilizing pre-constructed panels built in modules, the Honeyhome system reduces labor and materials costs but not at the expense of quality or beauty.

When four Honeyhome modules are combined they form a "circulation link" which is the key to Honeyhome's lower cost, flexibility and unusual strength. From this circulation link one may enter directly into three other rooms or modules. Most houses derive the major part of their strength from the four outer corners. In Honeyhome this strength is multiplied many times since every Honeyhome has at least thirty-six exterior corners which fall in a systematic pattern.

## Add Rooms Easily

The modular design of the Honeyhome makes the addition of modules for any purpose extremely easy. Modules are easily connected, allowing the expansion of a home's basic design in any direction. The beautiful natural woods used for the exterior blend handsomely, so that a Honeyhome never has that added-on look.





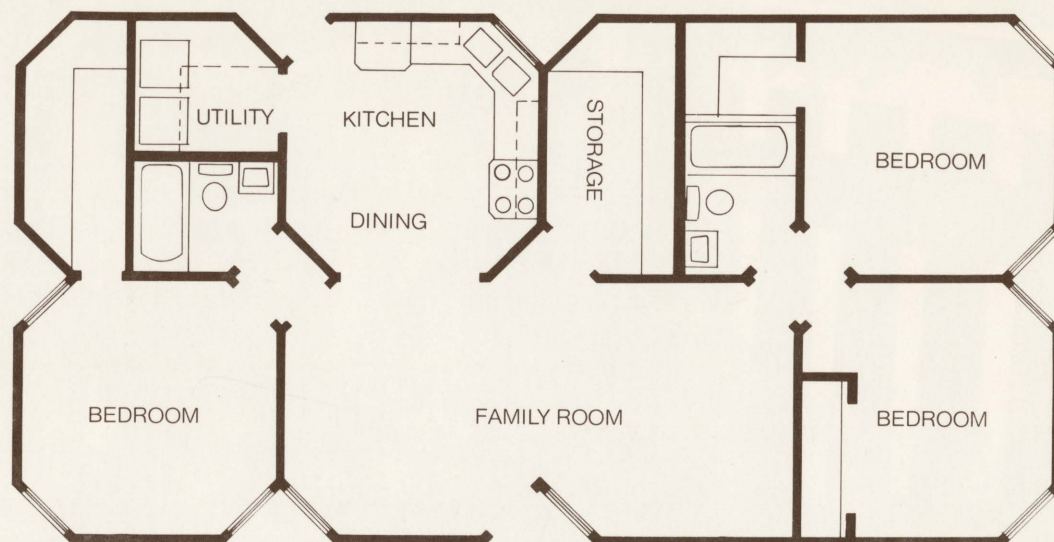
### One or Two Bedrooms

The perfect efficiency home or apartment. Kitchen, living room, bath, utility and storage room and ample closet space.

### Three Bedrooms

A spacious living room, two baths and great storage are features of the three bedroom Honeyhome. Alter our design slightly and add a den for almost no extra cost.

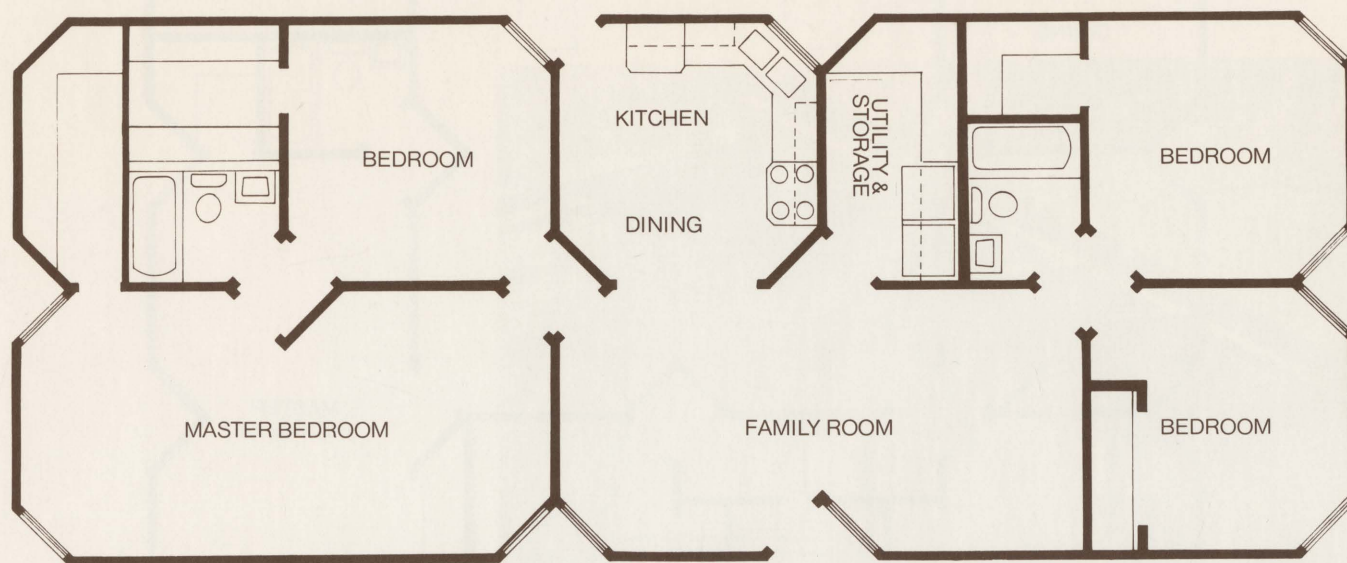
U.S. Patent No. 3851427  
International Patents Pending



U.S. Patent No. 3851427  
International Patents Pending



# With The Addition Of Modules, Honeyhome Grows With Your Family



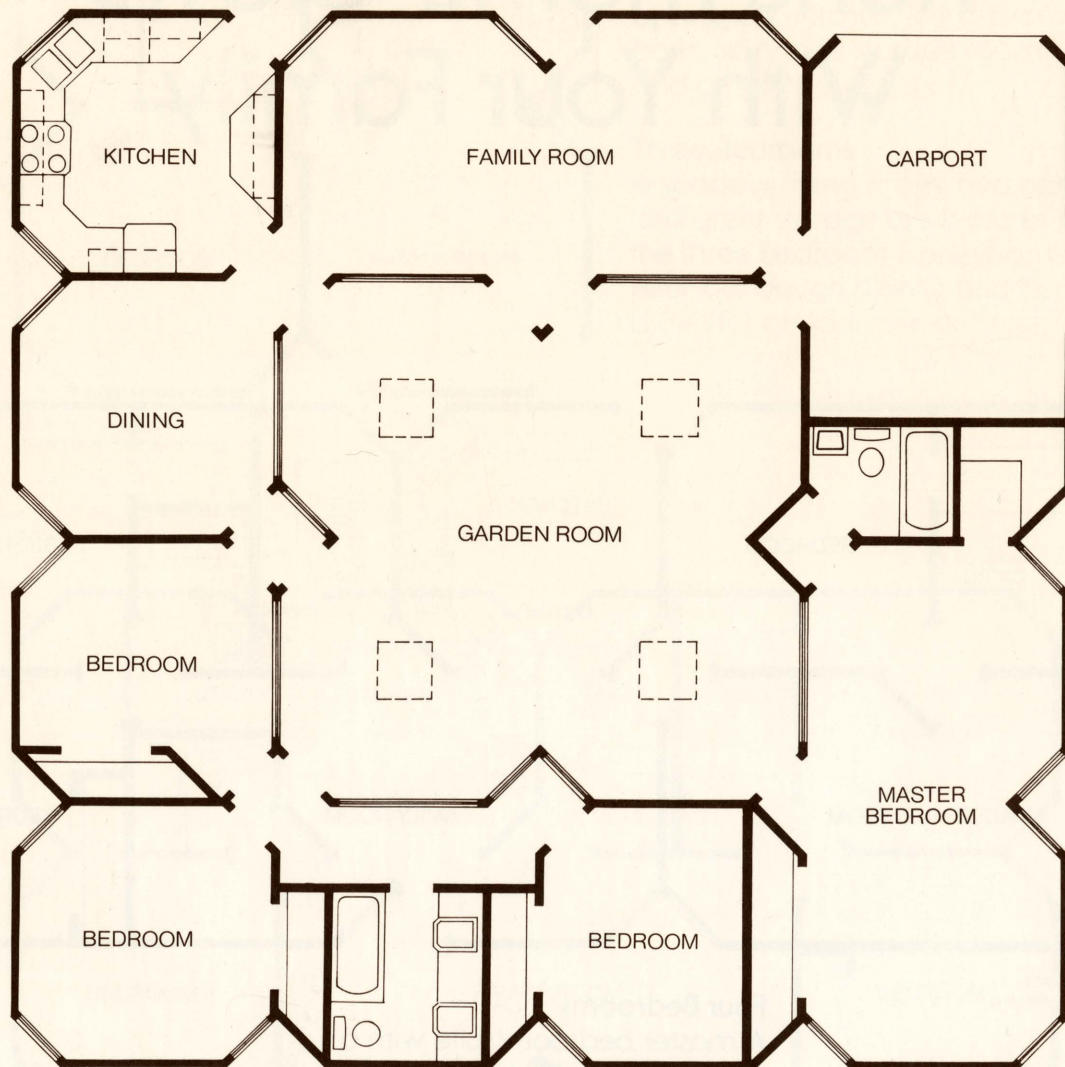
U.S. Patent No. 3851427  
International Patents Pending

## Four Bedrooms

A master bedroom suite with a twelve foot walk-in closet, exposed beam family room make the four bedroom Honeyhome attractive for any family. Pass-thru dining bar, fireplace, and many other optional features including redwood decks and carport are available.



# Custom Designs



Four bedroom home with a beautiful atrium or garden center...this is just one of the many designs available from Honeyhome, Inc.

U.S. Patent No. 3851427  
International Patents Pending









For additional information and a wide range of Honeyhome designs for homes, apartments and other building needs, telephone (601) 234-0200 or write Honeyhome, Inc., 539 Hathorn Road, Oxford, Mississippi 38655.



honeyhome  
inc 