

September 2019

# The Briers, Natchez, Miss.

E. C. Kropp Co. (Milwaukee, Wis.)

Follow this and additional works at: [https://egrove.olemiss.edu/ms\\_pcards](https://egrove.olemiss.edu/ms_pcards)



Part of the [Tourism and Travel Commons](#)

---

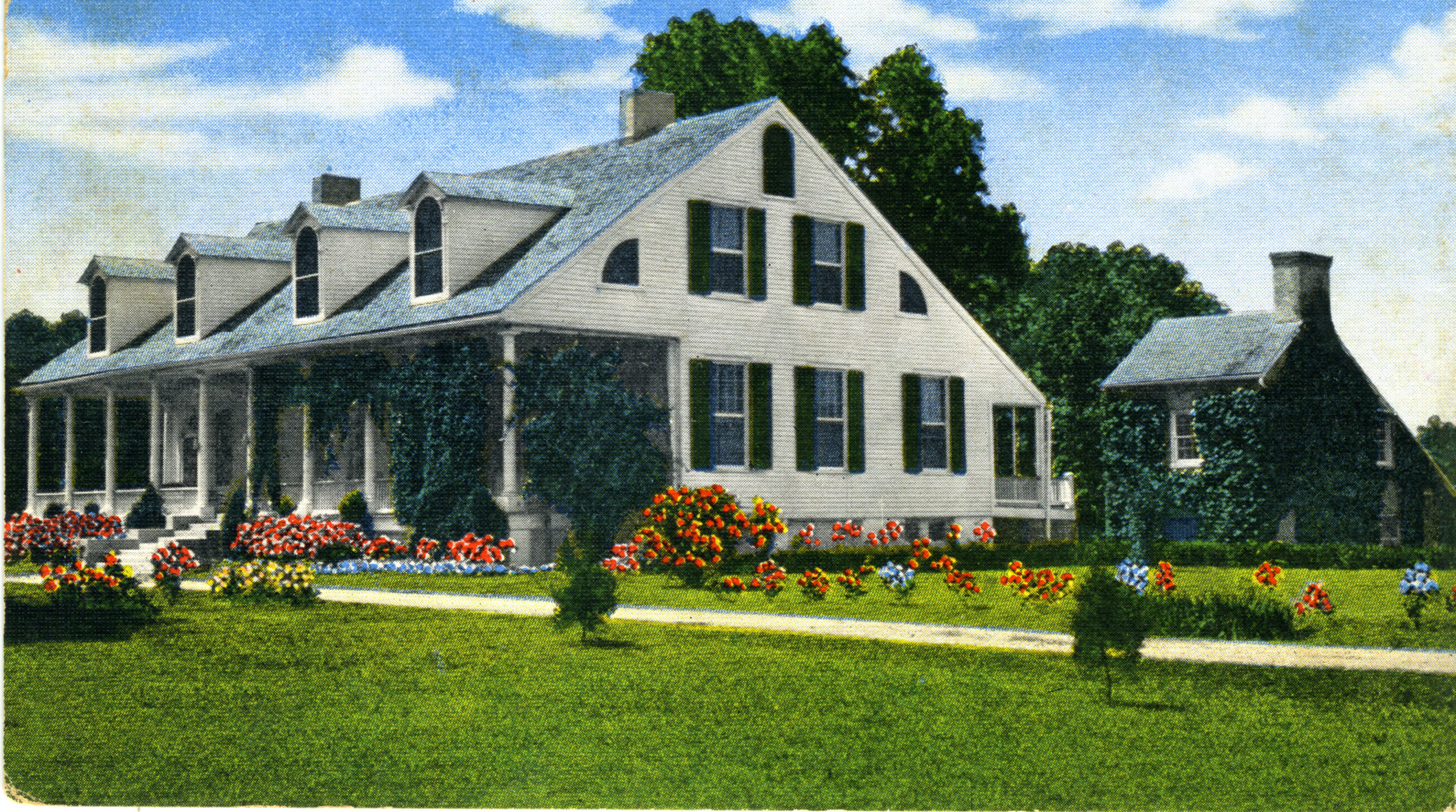
## Recommended Citation

E. C. Kropp Co. (Milwaukee, Wis.), "The Briers, Natchez, Miss." (2019). *Postcards, 2-sided*. 218.  
[https://egrove.olemiss.edu/ms\\_pcards/218](https://egrove.olemiss.edu/ms_pcards/218)

This Book is brought to you for free and open access by the Mississippi City and Counties Postcards at eGrove. It has been accepted for inclusion in Postcards, 2-sided by an authorized administrator of eGrove. For more information, please contact [egrove@olemiss.edu](mailto:egrove@olemiss.edu).



"THE BRIERS," NATCHEZ, MISS.





32737—11

Built before 1818. It was here in the front drawing room in 1845 that Varina Howell was married to Jefferson Davis, President of the Confederacy. During the shelling of Natchez, in the latter part of the War between the States, the front gallery post was torn away.

Published by Louisiana-Mississippi News Co., McComb, Miss.—  
A "Natural Color Card" made by E. C. Kropp Co., Milwaukee, Wis.—AJL

**POST CARD**

