

September 2019

Lansdowne, Natchez, Miss.

E. C. Kropp Co. (Milwaukee, Wis.)

Follow this and additional works at: https://egrove.olemiss.edu/ms_pcards



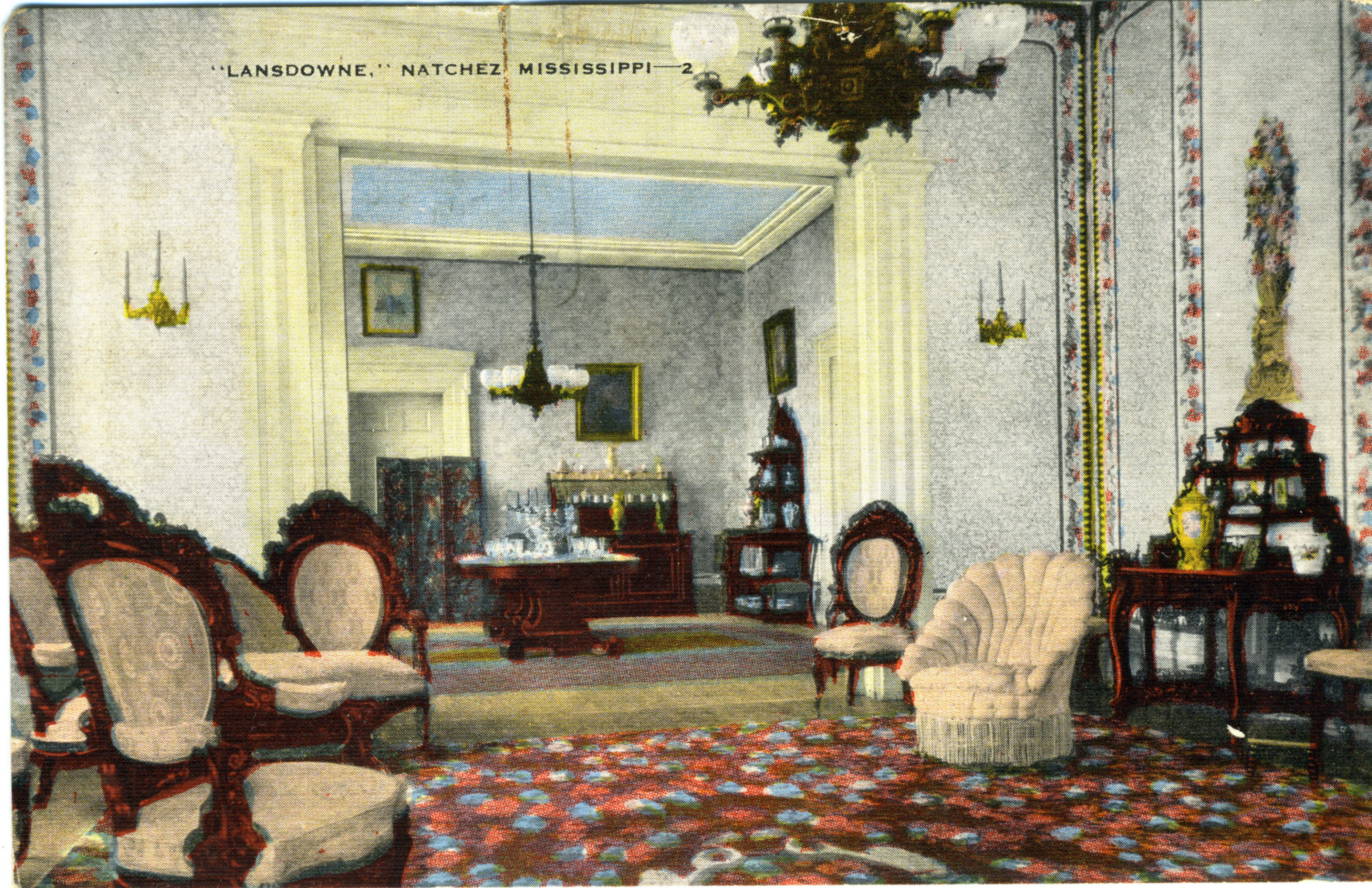
Part of the [Tourism and Travel Commons](#)

Recommended Citation

E. C. Kropp Co. (Milwaukee, Wis.), "Lansdowne, Natchez, Miss." (2019). *Postcards, 2-sided*. 186.
https://egrove.olemiss.edu/ms_pcards/186

This Book is brought to you for free and open access by the Mississippi City and Counties Postcards at eGrove. It has been accepted for inclusion in Postcards, 2-sided by an authorized administrator of eGrove. For more information, please contact egrove@olemiss.edu.

"LANSDOWNE," NATCHEZ MISSISSIPPI—2



Built by Geo. M. Marshall I in 1852; still owned and occupied by his descendants, Mrs. Jas. H. Ward and Geo. M. Marshall and family. Contains original furnishings of mahogany and French rosewood, French hand-blocked wallpaper, Aubusson carpet, gold cornices, brocatelles and bronze chandeliers. Many lovely paintings, including portrait of Levin R. Marshall by Sully, original set of apricot-banded china (partly destroyed during the Civil War), coin silver goblets, handsome silver and many other rare pieces of interest.

Published by Magnolia News, Natchez, Mississippi
Natural Color Post Card Made in U.S.A. by E. C. Kropp Co., Milwaukee, Wis.—FCL

7956

POST CARD

