

8-31-1944

Moonlight On Mississippi Gulf Coast

E. C. Kropp Co. (Milwaukee, Wis.)

Follow this and additional works at: https://egrove.olemiss.edu/ms_pcards

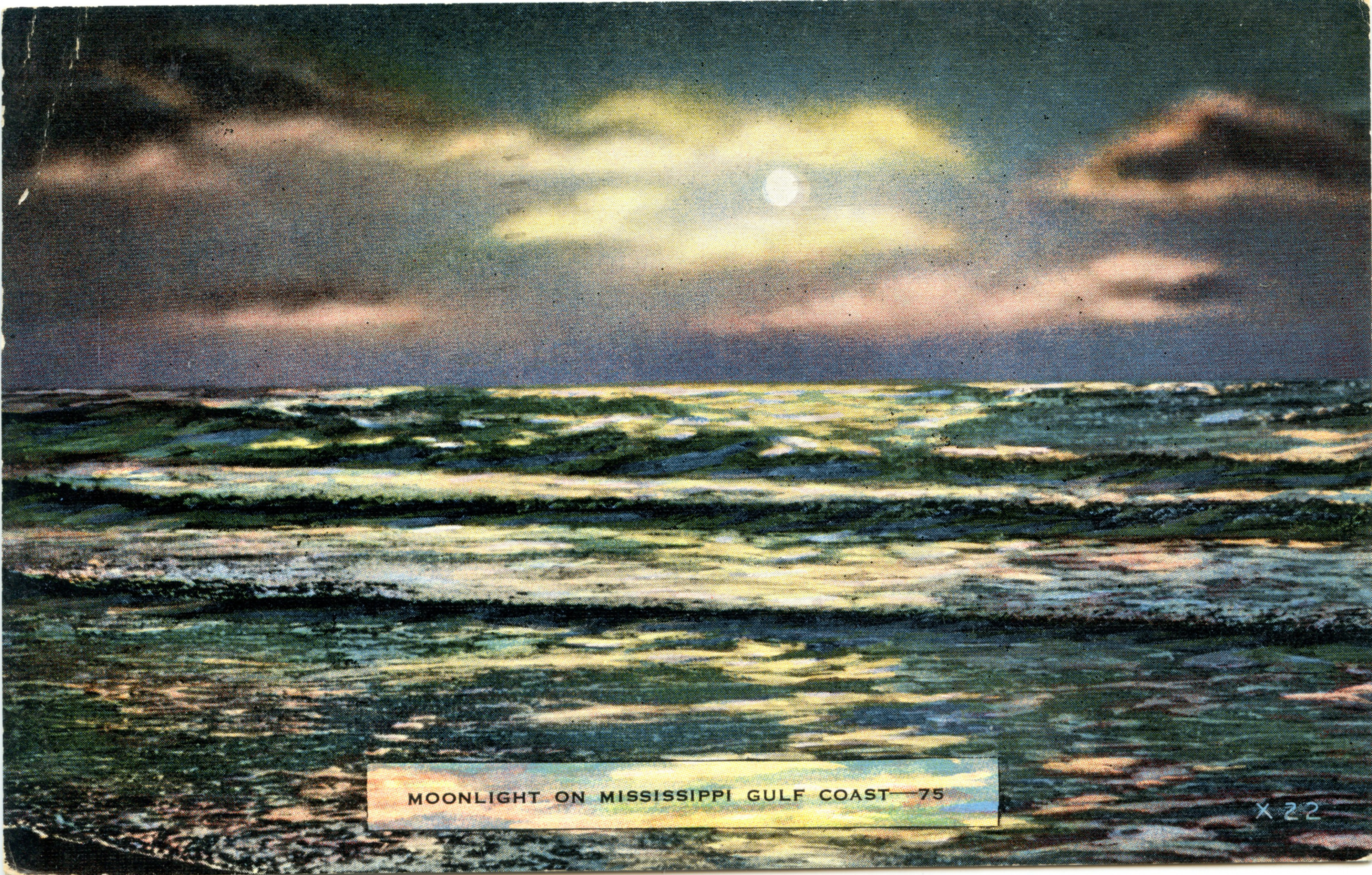


Part of the [Tourism and Travel Commons](#)

Recommended Citation

E. C. Kropp Co. (Milwaukee, Wis.), "Moonlight On Mississippi Gulf Coast" (1944). *Postcards, 2-sided*. 79.
https://egrove.olemiss.edu/ms_pcards/79

This Book is brought to you for free and open access by the Mississippi City and Counties Postcards at eGrove. It has been accepted for inclusion in Postcards, 2-sided by an authorized administrator of eGrove. For more information, please contact egrove@olemiss.edu.



MOONLIGHT ON MISSISSIPPI GULF COAST—75

X 22

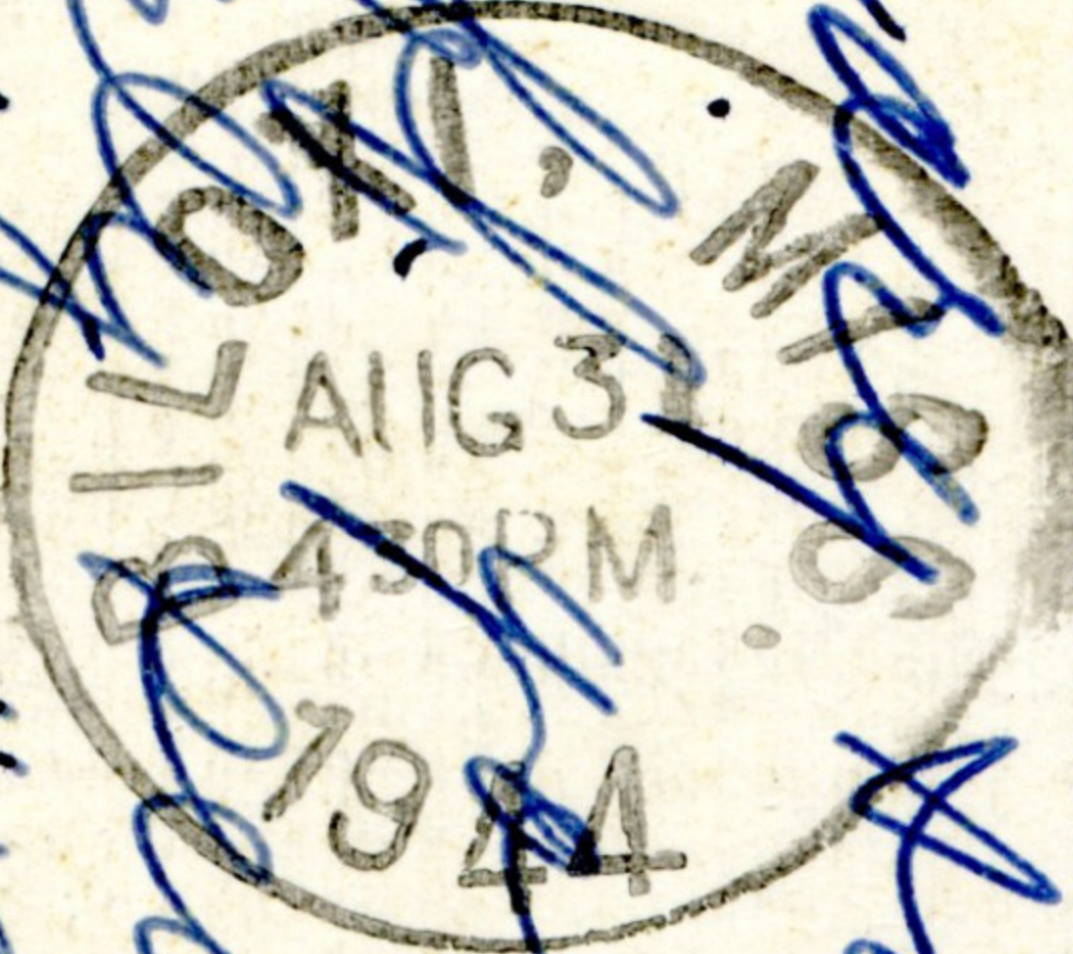
27111



Post CARD

Miss Kingbird E. Beyer
137 College Blvd.
San Antonio 2,
Texas

PUB. BY BARBER & THATCHER, GULFPORT, MISS. — NATURAL COLOR POST CARD MADE IN U.S.A. BY E. C. KROPP CO., MILWAUKEE, WIS. - (KLY)



Missy Pearl and
Beth you for an
early summer and
week, Miss Pearl
has my full time. She
gets up real early
morning. Since I
able to have a
all get. Love,
Doris