

September 2019

## Entrance to U.S. Cemetery, Corinth, Miss.

Corinth Souvenir Co. (Corinth, Miss.)

Follow this and additional works at: [https://egrove.olemiss.edu/ms\\_pcards](https://egrove.olemiss.edu/ms_pcards)



Part of the [Tourism and Travel Commons](#)

---

### Recommended Citation

Corinth Souvenir Co. (Corinth, Miss.), "Entrance to U.S. Cemetery, Corinth, Miss." (2019). *Postcards, 2-sided*. 57.  
[https://egrove.olemiss.edu/ms\\_pcards/57](https://egrove.olemiss.edu/ms_pcards/57)

This Book is brought to you for free and open access by the Mississippi City and Counties Postcards at eGrove. It has been accepted for inclusion in Postcards, 2-sided by an authorized administrator of eGrove. For more information, please contact [egrove@olemiss.edu](mailto:egrove@olemiss.edu).

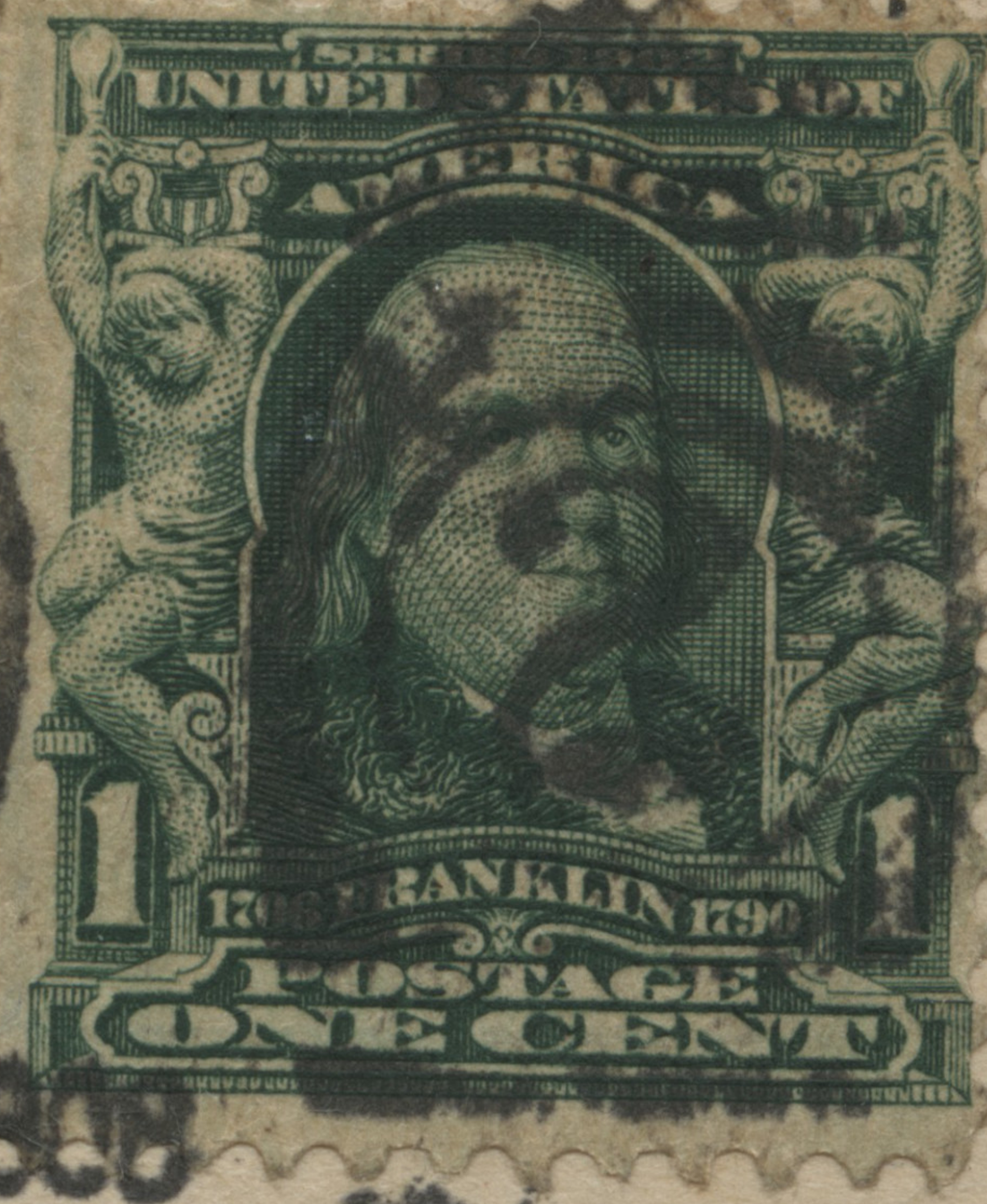


PUB. BY CORINTH SOUVENIR CO., CORINTH, MISS.

ENTRANCE TO U. S. CEMETERY, CORINTH, MISS.

2

# Post Card.



This Space may be used for Correspondence

The Address Only to be Written Here

town of 5000  
big business

H D

Mrs. Bertha Brown  
New Martinsville

W Va