

September 2019

Old Folks at Home / words by Stephen C. Foster

Stephen C. Foster

National Music Co. (Chicago)

Follow this and additional works at: https://egrove.olemiss.edu/sharris_f



Part of the [African American Studies Commons](#), and the [Music Commons](#)

Recommended Citation

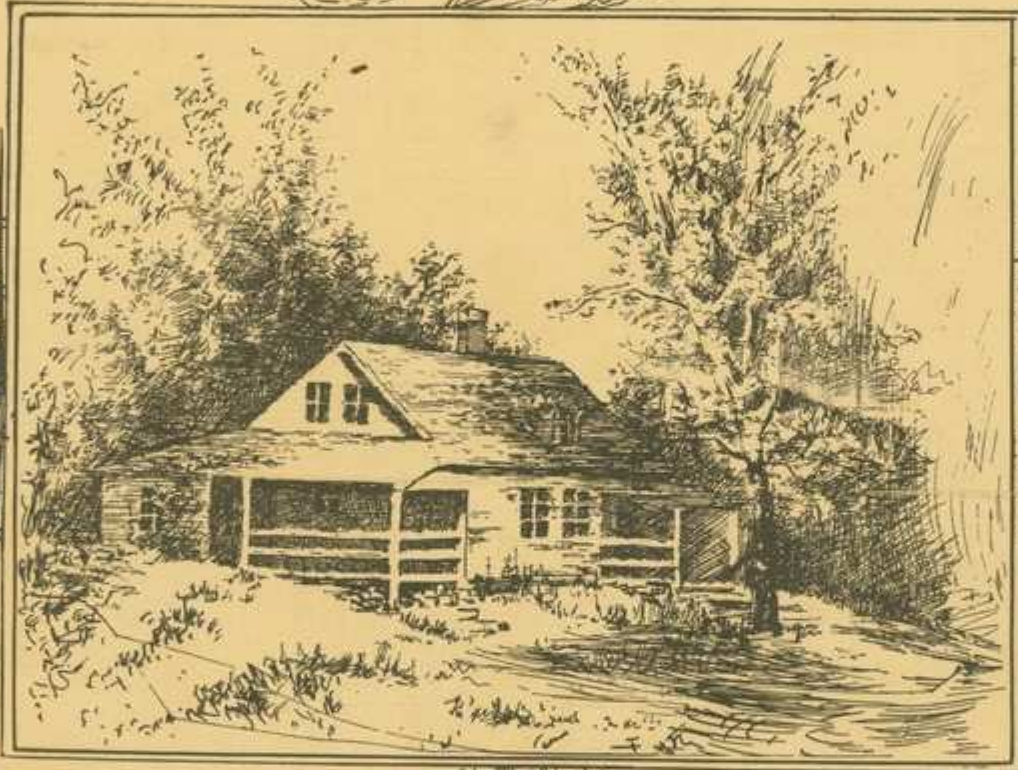
Foster, Stephen C. and National Music Co. (Chicago), "Old Folks at Home / words by Stephen C. Foster" (2019). *Sheet Music, Undated*. 8.

https://egrove.olemiss.edu/sharris_f/8

This Book is brought to you for free and open access by the Sheldon Harris Collection at eGrove. It has been accepted for inclusion in Sheet Music, Undated by an authorized administrator of eGrove. For more information, please contact egrove@olemiss.edu.

"WAY DOWN UPON DE SWANEE RIBER."

OLD FOLKS AT



HOME

Harry Earl

Composed By
Stephen C. Foster

40

3665	Variations	W. H. Lanyon,	.50
3405	Song	Stephen A. Foster,	.40

Published
By
215 To 221
Wabash
Avenue
NATIONAL MUSIC
COMPANY
CHICAGO.

The Great Waltz Hit

(Words ad-lib)

ALICE BLUE WALTZES.

By ABBIE A. FORD

Al - ice dear Al - ice we wish you hap - pi - ness

Life's path looks bright for you, may shad - ows nev - er fall.

Keep true your prom - ise e - ver be loy - al

He who has won your heart will shield you thro' all

Alice Blue - 4

Copyright MCMVI by Windsor Music Co.

If your dealer cannot supply, send 25¢ (regular price 50¢) to
Windsor Music Co. State & Quincy sts Chicago

Old Folks at Home.

Written and Composed by S. C. Foster.

Moderato.

The first system of the piano introduction consists of two staves. The right staff is in treble clef with a key signature of one sharp (F#) and a common time signature (C). It contains a melodic line of quarter notes: F#4, G4, A4, B4, C5, B4, A4, G4, F#4. The left staff is in bass clef with the same key signature and time signature, containing a bass line of quarter notes: F#2, G2, A2, B2, C3, B2, A2, G2, F#2.

The second system of the piano introduction continues the melodic and bass lines from the first system. The right staff continues with quarter notes: D5, C5, B4, A4, G4, F#4, E4, D4. The left staff continues with quarter notes: F#2, G2, A2, B2, C3, B2, A2, G2, F#2.

The first system of the vocal and piano accompaniment. The vocal line (treble clef) has the lyrics: "1. Way down up - on de Swa - nee rib-ber, Far, far a - way,". The piano accompaniment (grand staff) features a right hand with chords and a left hand with a simple bass line.

The second system of the vocal and piano accompaniment. The vocal line (treble clef) has the lyrics: "Dere's wha my heart is turn - ing eb-ber, Dere's wha de old folks stay." The piano accompaniment (grand staff) continues with chords and a bass line.

All up and down de whole ere - a - tion, sad - ly I roam—

Still long-ing for de old plan - ta - tion, And for de old folks at home.

§ CHORUS.

All de world am sad and drea - ry, Eb - 'ry where I roam,

Oh, dark-ies, how my heart grows wea-ry, far from de old folks at home!

2. All 'round de lit-tle farm I wan-der'd. When I was young;

Den ma-ny hap-py days I squander'd—ma-ny de songs I sung.

When I was play-ing wid my brudder, Hap-py was I,— *Dal*

Oh! take me to my kind old mudder, Dere let me live and die.

3. One lit-tle hut a-mong de bush-es, one dat I love,

Still sad-ly to my mem-'ry rush-es, No matter where I rove.

When will I see de bees a humming, All round de eomb? *Dal*

When will I hear de ban-jo tumming, Down in my good old home?

TELL ME WHY, LITTLE GIRL, TELL ME WHY.

CHORUS. *Lentamente.* Words by MABEL GIRLING Music by EVANS LLOYD.
Composer of "Would You?"

Tell me why lit-tle girl tell me why Why the

love light has gone from your eye That your heart nev-er

more beats for me Tho' I ev-er am dream-ing of

thee Tell me why lit-tle girl tell me why That

Copyright MCMV by Windsor Music Co.
Copyright secured in England.

If your dealer cannot supply, send 25¢ (regular price 50¢) to
Windsor Music Co. State & Duinoy sts Chicago