

1936

The Night Is Young and You're So Beautiful / music by Dana Suesse; words by Billy Rose and Irving Kahal

Dana Suesse

Billy Rose

Irving Kahal

Words and Music Inc. (New York)

Follow this and additional works at: https://egrove.olemiss.edu/sharris_e

 Part of the [African American Studies Commons](#), and the [Music Commons](#)

Recommended Citation

Suesse, Dana; Rose, Billy; Kahal, Irving; and Words and Music Inc. (New York), "The Night Is Young and You're So Beautiful / music by Dana Suesse; words by Billy Rose and Irving Kahal" (1936). *Sheet Music, 1930-1967*. 43.
https://egrove.olemiss.edu/sharris_e/43

This Book is brought to you for free and open access by the Sheldon Harris Collection at eGrove. It has been accepted for inclusion in Sheet Music, 1930-1967 by an authorized administrator of eGrove. For more information, please contact egrove@olemiss.edu.

THE NIGHT IS YOUNG AND YOU'RE SO BEAUTIFUL

FORT WORTH FRONTIER CENTENNIAL

Presents

BILLY ROSE'S

CASA MAÑANA

WORDS BY
BILLY ROSE
AND
IRVING KAHAL
MUSIC BY
DANA SUESSE

STAGED BY
JOHN MURRAY ANDERSON
ARCHITECTURE DESIGNED BY
ALBERT JOHNSON



YOU'RE LIKE A TOY-BALLOON
ANOTHER MILE
THE NIGHT IS YOUNG AND
YOU'RE SO BEAUTIFUL

WORDS & MUSIC INC.
MUSIC PUBLISHERS
NEW YORK, N.Y. - MADE IN U.S.A.

2 The Night Is Young And You're So Beautiful

Words by
BILLY ROSE and
IRVING KAHAL

Music by
DANA SUESSE

Moderato

Piano

mf *poco rit*

p * C Emi. Gmi. A7

So pro - per and po - lite, Up - on this love - ly night We
In - stead of mak - ing love, We stand here talk - ing of The

L.H. *p*

Dmi. * F Dmi.7 G7 C

sit here mak - ing fool - ish con - ver - sa - tion, In - stead of be - ing bright; Let's
mer - its of the Fair and Gro - ver Cleve - land. For - get the fer - ris wheel, My

E G Ami.7 D7 D7 G7

be our - selves to - night And take ad - van - tage of the si - tu - a - tion:
su - gar plum, let's steal In - to the paint - ed realms of make - be - lieve land.

* Symbols for Ukulele, Guitar and Banjo.

Refrain Lento *p legato* C E mi. C C ma.7 A mi.7 C

The night is young and you're so beau-ti-ful, Here a-mong the

sha-dows, beau-ti-ful la-dy, op-en your heart.

The scene is set, the breez-es sing of it; Can't you get in-

to the swing of it, la-dy, When do we

The Night Is Young etc.

C Dmi.7 C F C G+

start? When the la - dy is kiss - a - ble

mp

C C+ C Cma.7 C

And the ev - 'ning is cool, An - y dream is per -

D₇⁹ D7 G₇⁹ Fma.7

miss - a - ble in the heart of a fool.

mf

G7 Emi. G7 C Emi. C

The moon is high And you're so gla - mor - ous,

p

Red. *

The Night Is Young etc.

Cma.7 Ami.7 C C Dmi.7 Emi.

And if I seem o - ver - am - or - ous, la - dy,

E♭mi. G7 Ami. A♭+

What can I do? The

C C9 C D#dim. G7 C Emi. G+ G7

night is young and I'm in love with you! The

C D♭ C

you!

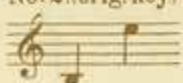
p *pp*

ANOTHER GREAT SONG FROM THE PENS OF THESE GIFTED COMPOSERS

No. 1.



No. 2. (orig. key)



No. 3.



Words by
BILLY ROSE and
IRVING KAHAL

ANOTHER MILE

Music by
DANA SUESSE

REFRAIN (*not fast*)

An-oth-er mile, — an-oth-er mile — And all the strugglin' will be worth while,

For when we stand — on prai-rie land, — The sun will smile

A light-er heart, — a bright-er eye, — A green-er field and a blu-er

REFRAIN

Another mile, another mile and all the strugglin' will be worth while,
For when we stand on prairie land, the sun will smile.
A lighter heart, a brighter eye, a greener field and a bluer sky.
Another land, the brotherland, where we'll get by.
One more river, one more mountain, one more valley.
Headin' straight way for the gateway of our new home
The grass is tall, the goin' slow, the rain may fall and the wind may blow.
Buck up and smile, there's only one more mile to go.

WORDS & MUSIC INC. 1619 Broadway, New York N.Y.