

1922

I Wish I Could Shimmy Like My Sister Kate / music by A.J. Piron; words by A.J. Piron

A. J. Piron

A. J. Piron

Clarence Williams Music Publishing Co. (New York)

Follow this and additional works at: https://egrove.olemiss.edu/sharris_d

 Part of the [African American Studies Commons](#), and the [Music Commons](#)

Recommended Citation

Piron, A. J.; Piron, A. J.; and Clarence Williams Music Publishing Co. (New York), "I Wish I Could Shimmy Like My Sister Kate / music by A.J. Piron; words by A.J. Piron" (1922). *Sheet Music, 1920-1929*. 35.
https://egrove.olemiss.edu/sharris_d/35

This Book is brought to you for free and open access by the Sheldon Harris Collection at eGrove. It has been accepted for inclusion in Sheet Music, 1920-1929 by an authorized administrator of eGrove. For more information, please contact egrove@olemiss.edu.

I WISH I COULD SHIMMY LIKE MY SISTER KATE

WORDS AND MUSIC BY A.J. PIRON

Butler

Dec. 1922

Chicago, Ill.

"ORIGINAL MEMPHIS FIVE"
Kings of Dance Music
PIONEER EXPLOITERS OF THIS NUMBER



CLARENCE WILLIAMS

MUSIC PUBLISHING CO., INC.
1547 BROADWAY, NEW YORK



MADE IN
U.S.A.

I Wish I Could Shimmy Like My Sister Kate

Words & Music by
A. J. PIRON

Tempo di Jazz

The piano introduction is in 4/4 time, featuring a syncopated melody in the right hand and a steady bass line in the left hand. The key signature has two flats (B-flat and E-flat). The piece begins with a forte (*f*) dynamic.

Went to a dance with my sis-ter Kate,
Thought if I want to be up-to date,

Vamp

The first vocal line is in 4/4 time, starting with a rest for two measures. The piano accompaniment features a vamp in the right hand and a steady bass line in the left hand. The dynamic is piano (*p*).

Ev'-ry one there said she danced so great. I re-al-ized a thing or two,
I had to shim-my like sis-ter Kate. Although I tried'twas all in vain,

The second vocal line continues the melody in 4/4 time. The piano accompaniment provides harmonic support with chords and a steady bass line.

Then I got wise to something new, I look'd at Kate, she was in a trance
But sister Kate could not be blamed, She made me dance till I got sore feet,

The third vocal line concludes the piece in 4/4 time. The piano accompaniment continues with the same harmonic structure.

And then I knew it was in her dance All the boys are
I will be glad when it's all com - plete, Tried so hard to

go - ing wild Just ov - er Ka-tie's danc-ing style... I
im - i - tate To shim-my like my sis - ter Kate... I

CHORUS

Wish I could Shim - my like my sis - ter Kate, She shiv - ers like the Jel - ly

p-f

on a plate; My mam-my want-ed to know last night,

Why all the boys treat Sis-ter Kate so nice, Ev'-ry boy_ in our

neigh-bor - hood Knows that she can shim-my and it's un-der - stood.

I know I'm late but I'll be up to date, When I can shim-my like my sis-ter

Kate. I Kate, I mean, shim-my like my sis ter Kate.

SPECIAL JAZZ CHORUS as played on the records by the "Original Memphis Five"

I've learned to dance like my Sis - ter Kate I'll tell you_

that it's great. That dance's a bear but I don't care And I've learned to dance it_

With a feel - in' starts me reel - in. Now I can shim - my like Sis - ter Kate_

Gee I know I'm not late, I've learned_ to do a real shim-mie dance,

Hon - ey, like my Sis - ter Kate, Sweet Pa - pa, Dance it like my Sis - ter Kate_

LATEST BROADWAY SUCCESSES

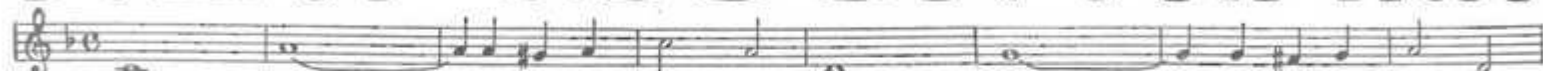
MAY BE HAD FOR
PIANO, PIANO PLAYER, OR TALKING MACHINE

ROUMANIA FOX-TROT



My sweet dark-eyed maid-en My heart's heav-y lad-en I'm blue

NEW MOON FOX-TROT



New moon why do you haunt me new moon why do you taunt me

IF YOU DON'T BELIEVE I LOVE YOU, SEE WHAT A FOOL I'VE BEEN BLUES



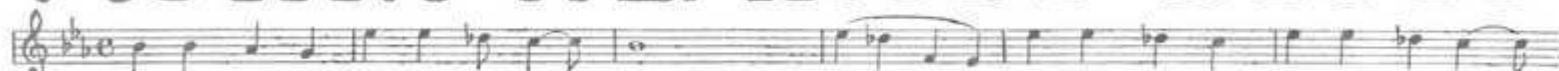
If you don't be-lieve I love you Look what a fool I've been If you don't think I fell for you

DECATUR STREET BLUES



Down on De-ca-tur Street I mean it can't be beat You'll see some pret-ty Browns, Yel-lows too,

ACHIN' HEARTED BLUES



Got those dog-gone Ach-in' heart-ed blues Bout my ba-by want some one to tell my wor-ried

Play 'Em For Mama and Sing 'Em For Me BLUES



Play 'em for ma-ma Sing 'em for me. I'm wild a-bout that blue mel-o-dy. I love you da-ily good and strong

CLARENCE WILLIAMS
MUSIC PUBLISHING CO. INC.
1547 BROADWAY NEW YORK

ALL EQUALLY AS GOOD AS THOSE YOU HAVE
HEARD CLARENCE WILLIAMS SING ON THE RECORDS