

1899

# Stay in Your Own Back Yard / music by Lyn Udal; words by Karl Kennett

Lyn Udal

Karl Kennett

M. Witmark and Sons (New York)

Follow this and additional works at: [https://egrove.olemiss.edu/sharris\\_a](https://egrove.olemiss.edu/sharris_a)



Part of the [African American Studies Commons](#), and the [Music Commons](#)

---

## Recommended Citation

Udal, Lyn; Kennett, Karl; and M. Witmark and Sons (New York), "Stay in Your Own Back Yard / music by Lyn Udal; words by Karl Kennett" (1899). *Sheet Music, 1834-1899*. 58.

[https://egrove.olemiss.edu/sharris\\_a/58](https://egrove.olemiss.edu/sharris_a/58)

24  
H

# STAY IN YOUR OWN BACKYARD



LYRIC BY

KARL KENNETT

MUSIC BY

LYN UDALL

PRICE 50c



STANDARD

M. WITMARK & SONS  
NEW YORK

PRINTED IN U.S.A.

# Stay In Your Own Backyard

Words by  
KARL KENNETT

Music by  
LYN UDALL

Moderately with expression

PIANO. *mf*

The piano introduction consists of two staves. The right hand plays a melody of eighth notes in a B-flat major key signature, starting with a half note G4, followed by eighth notes A4, Bb4, C5, D5, E5, F5, G5, and a half note G5. The left hand provides a harmonic accompaniment with chords and single notes.

Li - lac trees a-bloom - ing in the cor - ner, by the gate,  
Ev - 'ry day the chil - dren as they passed old mam-my's place,

*rit.* *p a tempo*

The first line of the song features a vocal melody in the right hand and piano accompaniment in the left hand. The tempo is marked 'Moderately with expression'. The first measure is a whole rest. The second measure starts with a half note G4, followed by eighth notes A4, Bb4, C5, D5, E5, F5, G5, and a half note G5. The piano accompaniment consists of chords and single notes.

Mam - my in the lit - tle cab - in door. — Curl - y head - ed pick - a - nin - ny  
Romp - ing home from school at night or noon, — Peer - ing thro' the fence would see this

The second line of the song continues the vocal melody and piano accompaniment. The vocal melody includes a dotted quarter note G4, followed by eighth notes A4, Bb4, C5, D5, E5, F5, G5, and a half note G5. The piano accompaniment continues with chords and single notes.

com - in' home so late, Cry - in' cause his lit - tle heart is sore; —  
ea - ger lit - tle face, Such a wist - ful, lone - some lit - tle coon; —

The third line of the song concludes the vocal melody and piano accompaniment. The vocal melody includes a dotted quarter note G4, followed by eighth notes A4, Bb4, C5, D5, E5, F5, G5, and a half note G5. The piano accompaniment continues with chords and single notes.

Copyright MDCCLXXIX by M. Witmark & Sons.  
Rights For Mechanical Instruments Reserved.  
International Copyright Secured.

“Tous droits d'Édition et  
d'Exécution réservés pour  
tous pays.”

All the chil - dren play - ing 'round have skin so white and fair,  
'Till one day the lit - tle face was gone for - ev - er more,

None of them with him will ev - er play, So Mam-my in her lap takes the  
God had called this dusk-y lit - tle elf, And Mam-my in the door sat and

lit - tle weep - ing chap, And says, in her kind old way:  
rocked a3 oft be - fore, And crooned to her old black self:

*Tenderly with expression*

*p*  
"Now hon - ey, yo' stay in yo' own back yard, Doan min' what dem white chiles

do; — What show yo' sup-pose dey's a gwine to gib A black lit - tle coon like

yo'? — So stay on dis side of de high boahd fence, An

hon - ey, doan cry so hard, — Go out an' a - play, jes' as

much as yo' please, But stay in yo' own back yard." —

*poco rit.*

EVERYBODY SHOULD SING THIS BEAUTIFUL BALLAD

# THAT WONDERFUL MOTHER OF MINE

THE TEXT - by *CLYDE HAGER*, carries a tender, fragrant message and is written in the simple language that even a child can grasp.

THE MELODY - by *WALTER GOODWIN*, is beautiful and just as simple: easy flowing and quickly memorized, with a real tune to give it added sweetness.

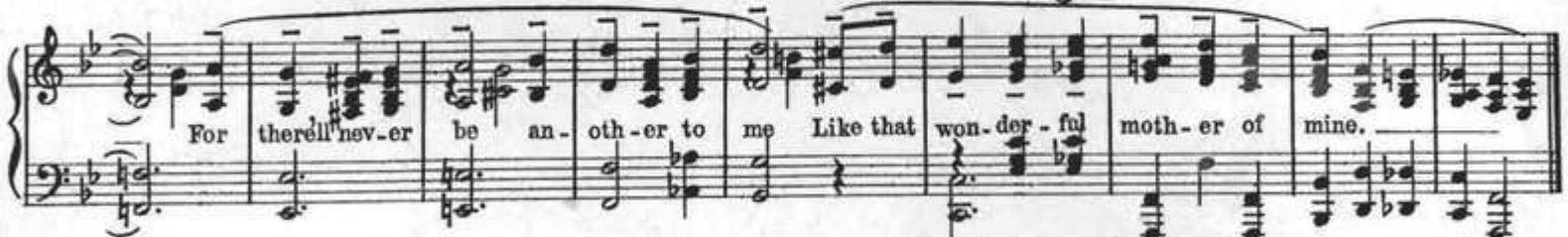
## AN IDEAL SONG FOR THE HOME

SCHOOL, CONCERT, LYCEUM, VAUDEVILLE, etc.- NOT ALONE FOR MOTHER'S DAY BUT FOR EVERY DAY IN THE YEAR

THE moon never beams without bringing me dreams  
Of that wonderful mother of mine;  
The birds never sing but a message they bring  
Of that wonderful mother of mine.  
Just to bring back the time  
That was so sweet to me;  
Just to bring back the day  
When I sat on her knee.

You are a wonderful mother,  
Dear old mother of mine.  
You'll hold a spot down deep in my heart,  
Till the stars no longer shine.  
Your soul shall live on forever,  
On through the fields of time.  
For there'll never be another to me  
Like that wonderful mother of mine.

I pray ev'ry night to our Father above,  
For that wonderful mother of mine.  
I ask Him to keep her as long as He can,  
That wonderful mother of mine.  
There are treasures on earth  
That make life seem worth while,  
But there's none can compare  
With my dear mother's smile.



Copyright MCMXVIII by M. Witmark & Sons. - International Copyright Secured

EASY  
TO  
LEARN

A THOUGHT SUCH AS THIS INSTILLED IN CHILDHOOD  
REMAINS ENSHRINED IN THE HEART FOREVER

HARD  
TO  
FORGET

PUBLISHED AS FOLLOWS

Solo, Four keys, *Ab, (bb to eb) Bb, (c to f) C, (d to g) Eb, (f to bb)*

Duet, Two keys, *Bb, (Melody low) C, (Melody high)*

Octavo, Two Part    Three Part (S.S.A. or T.B.B. and S.A.B.)    Four Part, Male, Female and Mixed  
Ensemble, Violin and Piano    Cello and Piano    Violin, Cello and Piano  
Orchestration    Band

TRADE MARK



REGISTERED

SEND FOR

# "SONGLAND"

THE FREE CATALOG, CONTAINING EXCERPTS OF  
WORLD FAMOUS SONGS

TRADE MARK



REGISTERED

# ARTHUR PENN



COMPOSER OF  
SMILIN' THROUGH • SUNRISE AND YOU • CARISSIMA • SING ALONG  
and others

## SMILIN' THROUGH

There's a lit - tle brown road wind - in' o - ver the hill To a lit - tle white  
cot by the sea; There's a lit - tle green gate At whose  
trell - is I wait, While two eyes o' blue Come smil - in' through At me!

Copyright MCMXXVIII by M. Witmark & Sons

**M. WITMARK & SONS**  
STANDARD DEPARTMENT  
NEW YORK