

University of Mississippi

eGrove

Women's Soccer

Athletics

2012

2012 Ole Miss Soccer Media Guide

Ole Miss Athletics. Women's Soccer

Follow this and additional works at: https://egrove.olemiss.edu/med_soc

Recommended Citation

Ole Miss Athletics. Women's Soccer, "2012 Ole Miss Soccer Media Guide" (2012). *Women's Soccer*. 4. https://egrove.olemiss.edu/med_soc/4

This Book is brought to you for free and open access by the Athletics at eGrove. It has been accepted for inclusion in Women's Soccer by an authorized administrator of eGrove. For more information, please contact egrove@olemiss.edu.



2012

REBEL

SOCCER

“OLE MISS MEANS TO PLAY FOR SOMETHING MUCH BIGGER THAN MYSELF. IT MEANS TO PLAY FOR MY TEAMMATES AND DO NOTHING HALF-HEARTEDLY.”

-MANDY McCALLA
TEAM CAPTAIN
JR - F



EMILY SINOVICH
SR - D

ALIX HILDAL
TEAM CAPTAIN
SR - MF

ERIN EMERSON
TEAM CAPTAIN
JR - MF



TABLE OF CONTENTS

INTRO	1-9	2011 REVIEW	36-38	Starnes Athletic Training Center	56
Table of Contents	1	Notes and Highlights	36	Chancellor	57
Quick Facts	2	Statistics	37	Athletics Committee	57
Schedule	2	SEC Review	38	Athletics Director	58
Roster	3			Athletics Leadership	58
Media Information.....	4-5	HISTORY & RECORDS	39-51		
Rebels on Television	5	Individual Records	39-40		
Television/Radio Roster	6	Annual Statistical Leaders	41		
Team Photo/Captains.....	7	Team Records	42		
2012 Season Outlook.....	8-9	Year-by-Year Results.....	43-45		
		All-Time Records vs. Opponents.....	46		
COACHES & STAFF	10-14	All-Time Coaching Records	46		
Head Coach Matthew Mott.....	10-11	Miscellaneous Records	47		
Assistant Coach Becky Fletcher.....	12	Record vs. Conferences	47		
Assistant Coach Rob Thompson.....	13	Rebel Honor Roll.....	48-50		
Support Staff	14	Letterwinners.....	51		
		ATHLETICS SUPPORT	52-53		
2012 REBELS	15-33	Strength and Conditioning.....	52		
Senior Profiles	15-17	Health and Sports Performance.....	52		
Junior Profiles	18-23	Athletics Department Mission Statement.....	52		
Sophomore Profiles	24-27	Academic Support	53		
Newcomer Profiles.....	28-33	Rebel Ready - CHAMPS Life Skills.....	53		
		NCAA Compliance.....	53		
TOURNAMENTS	35-36	FACILITIES	54-58		
NCAA Tournament.....	35	Ole Miss Soccer Stadium	54		
SEC Tournament	35	Gillom Sports Center and Complex	55		
Magnolia Cup.....	36	FedEx Academic Support Center	56		

CREDITS

Editor: Kristen Saibini
Cover designs: Dan Pellegrino

Special Assistance: Kyle Campbell, Joey Jones

Photography: Associated Press, Kevin Bain, Jason Baker, Joey Brent, Harry Briscoe, Kyle Campbell, Doug Fejer, J.D. Johnson, Rob Johnson, Joey Jones, Robert Jordan, Nathan Latil, Anne McDaniel, Ryan Moore, Langston Rogers, Kristen Saibini, John Seiler, Matthew Sharpe, Daniel Snowden, Michael Thompson, Ryan Whittington

© COPYRIGHT UNIVERSITY OF MISSISSIPPI
 The 2012 Ole Miss Soccer Guide was published by the University of Mississippi Athletics Media Relations Office and designed by Kristen Saibini using Adobe InDesign and Adobe Photoshop. All contents of this issue are copyrighted 2012 by the University of Mississippi. Reproduction without written permission is strictly prohibited.



INTRODUCTION

2012 QUICK FACTS

GENERAL INFORMATION

Name: University of Mississippi (Ole Miss)
Location: Oxford, Miss.
Founded: November 6, 1848
Enrollment: 20,824
Nickname: Rebels
Colors: Cardinal Red & Navy Blue
Conference: Southeastern (Western Division)
Chancellor: Dr. Daniel W. Jones
Athletics Director: Ross Bjork
Executive Associate AD/SWA: Lynnette Johnson
Ticket Office: 800.REBS.TKTS
Stadium: Ole Miss Soccer Stadium (1,500)
Press Box Number: 662.915.7851

TEAM INFORMATION

2011 Overall Record: 8-10-1
SEC Record/Finish: 4-7/4th West
Postseason: None
Letterwinners Returning/Lost: 13/7
Starters Returning/Lost: 6/5
Newcomers: 12

COACHING STAFF

Head Coach: Matthew Mott, 3rd year
Alma Mater: UCF, 2000
Ole Miss Record/Years: 15-19-5/2 years
Career Record/Years: Same
Assistant Coach: Becky Fletcher
Alma Mater: Erskine College, 1998
Year at Ole Miss: 3rd
Assistant Coach: Rob Thompson
Alma Mater: Lock Haven, 1995
Year at Ole Miss: 3rd
Soccer Office Phone: 662.915.7891

PROGRAM HISTORY

First Year of Soccer: 1995
Program's Overall Record: 173-138-33 (.551)
NCAA Tournament Appearances: 4 (2002, 2003, 2005, 2009)
Best NCAA Tournament Finish: 2nd Round/2003
SEC Western Division Titles: 3 (1999, 2000, 2005)
Best SEC Overall Finish: 2nd/2005
Best SEC Tournament Finish: 2nd/1999

ATHLETICS MEDIA RELATIONS

Assistant AD, Media and Public Relations: Kyle Campbell
Associate Director: Kim Ling
Associate Director (soccer): Bill Bunting
Office Phone: 662.915.1083
Cell Phone: 662.816.5862
E-Mail: wbunting@olemiss.edu
Associate Director: Joey Jones
Assistant Director: Daniel Snowden
Assistant Director: Kristen Saibini
Assistant Director: Metz Camfield
Senior Staff Assistant: Ashley Mangrum
Mailing Address: PO Box 217 / University, MS 38677
Overnight Address: 908 All-American Drive / University, MS 38677
Website: www.OleMissSports.com
Facebook: www.Facebook.com/OleMissSports
www.Facebook.com/OleMissSoccer
Twitter: www.Twitter.com/OleMissNow
www.Twitter.com/CoachMattMott
www.Twitter.com/OleMissSoccer

2012 SCHEDULE



SAINT LOUIS

AUG. 17 | OXFORD, MISS. | OLE MISS SOCCER STADIUM | 7 PM CT



at MIDDLE TENNESSEE STATE

AUG. 19 | MURFREESBORO, TENN. | BLUE RAIDER SOCCER FIELD | 6 PM CT



at TROY

AUG. 22 | TROY, ALA. | JESSE H. COLLEY TRACK/SOCCER COMPLEX | 3 PM CT



LOUISIANA-LAFAYETTE

AUG. 26 | OXFORD, MISS. | OLE MISS SOCCER STADIUM | 1 PM CT



ARKANSAS-LITTLE ROCK

AUG. 31 | OXFORD, MISS. | OLE MISS SOCCER STADIUM | 7 PM CT



TEXAS TECH

SEPT. 2 | OXFORD, MISS. | OLE MISS SOCCER STADIUM | 7 PM CT



UAB

SEPT. 7 | OXFORD, MISS. | OLE MISS SOCCER STADIUM | 7:30 PM CT



ARKANSAS

SEPT. 14 | OXFORD, MISS. | OLE MISS SOCCER STADIUM | 7 PM CT



TEXAS A&M

SEPT. 16 | OXFORD, MISS. | OLE MISS SOCCER STADIUM | 1 PM CT



at MISSOURI

SEPT. 21 | COLUMBIA, MO. | AUDREY J. WALTON TRACK/SOCCER FIELD | 7 PM CT



at ALABAMA

SEPT. 23 | TUSCALOOSA, ALA. | UNIVERSITY OF ALABAMA SOCCER COMPLEX | 1 PM CT



at FLORIDA

SEPT. 28 | GAINESVILLE, FLA. | JAMES G. PRESSLY STADIUM | 6 PM CT



at AUBURN

SEPT. 30 | AUBURN, ALA. | AUBURN SOCCER COMPLEX | 2 PM CT



GEORGIA

OCT. 5 | OXFORD, MISS. | OLE MISS SOCCER STADIUM | 7 CT



KENTUCKY

OCT. 7 | OXFORD, MISS. | OLE MISS SOCCER STADIUM | 1 PM CT



at VANDERBILT

OCT. 12 | NASHVILLE, TENN. | VANDERBILT SOCCER/LACROSSE COMPLEX | 7 PM CT



at SOUTH CAROLINA

OCT. 14 | COLUMBIA, S.C. | STONE STADIUM | NOON CT



LSU

OCT. 19 | OXFORD, MISS. | OLE MISS SOCCER STADIUM | 7:30 PM CT



TENNESSEE

OCT. 21 | OXFORD, MISS. | OLE MISS SOCCER STADIUM | 1 PM CT



at MISSISSIPPI STATE

OCT. 25 | STARKVILLE, MISS. | MSU SOCCER FIELD | 7 p.m. CT



SEC TOURNAMENT

OCT. 29 - NOV. 4 | ORANGE BEACH, ALA. | ORANGE BEACH SOCCER COMPLEX

2012 ROSTER

NUMERICAL

NO.	NAME	POS.	HT.	YR.-EXP.	HOMETOWN/LAST SCHOOL
0	Emily Wilber	GK	5-6	FR-HS	Sonoma, Calif. (Sonoma Valley)
1	Kelly McCormick	GK	5-7	SO-1L	Laguna Niguel, Calif. (Dana Hills)
2	Samantha Sanders	D	5-8	FR-HS	West Allis, Wis. (Nathan Hill)
3	Erin Emerson	MF	5-2	JR-2L	Fayetteville, Ga. (Whitewater)
4	Alix Hildal	MF	5-5	SR-3L	Cincinnati, Ohio (Sycamore)
5	Georgia Russell	D	5-8	FR-HS	Tupelo, Miss. (Tupelo)
6	Rafaelle Souza	F	5-7	JR-1L	Salvador, Brazil (Centro Federal)
7	Bethany Bunker	F	5-8	FR-HS	Memphis, Tenn. (St. Agnes Academy)
8	Maddie Friedmann	D/MF	5-6	FR-HS	St. Louis, Mo. (Ursuline Academy)
9	Sydney Eddy	MF/F	5-6	FR-HS	Franklin, Tenn. (Battle Ground Academy)
10	Brooke Theobald	D	5-7	FR-HS	Marietta, Ga. (Walton)
11	Emily Reid	MF	5-7	JR-1L	McKinney, Texas (Oklahoma)
12	Meghan O'Rourke	MF	5-5	SR-1L	Peachtree City, Ga. (McIntosh)
13	Emily Sinovich	D	6-0	SR-1L	St. Louis, Mo. (UAB)
14	Sara Coleman	F	5-4	FR-HS	Laurel, Miss. (West Jones)
15	Jessica Hiskey	D	5-4	FR-HS	Franklin, Tenn. (Franklin)
16	Mary Louise Clawson	MF/F	5-6	SO-1L	Houston, Texas (Houston Christian)
17	Maddie Cunningham	D	5-6	JR-2L	Louisville, Ky. (Ballard)
19	Virginia Seiler	D	5-7	SO-1L	Atlanta, Ga. (The Lovett School)
20	Olivia Harrison	F/MF	5-8	FR-HS	Collierville, Tenn. (Houston HS)
21	Mandy McCalla	MF/F	5-8	JR-2L	Fayetteville, Ga. (Starr's Mill)
22	Jennifer Miller	MF	5-1	FR-HS	St. Louis, Mo. (Co Jesu Academy)
26	Kim Duff	MF/D	5-8	JR-1L	Greensboro, NC (Dakota Wesleyan Univ.)
28	Margaret Thomas	D	5-6	SO-1L	Benton, Ky. (Marshall County)
31	Brianna Supulski	GK	6-0	JR-TR	Carrollton, Texas (Indiana State)

Head Coach: Matthew Mott, 3rd year (UCF, 2000)

Assistant Coach: Becky Fletcher, 3rd year (Erskine College, 1998)

Assistant Coach: Rob Thompson, 3rd year (Lock Haven, 1995)

Director of Operations: Ronda Brooks, 1st year (Auburn, 2008)

Athletic Trainer: Erica Wilburn, 8th year (West Alabama, 2002)

Strength and Conditioning: Randall Dorvin, 2nd year (New Orleans, 2000)

Media Relations: Bill Bunting (Ole Miss, 2000)

Managers: Mike Melton, Lorrie Phillips

ALPHABETICAL

NO.	NAME
7	Bethany Bunker
16	Mary Louise Clawson
14	Sara Coleman
17	Maddie Cunningham
26	Kim Duff
9	Sydney Eddy
3	Erin Emerson
8	Maddie Friedmann
20	Olivia Harrison
4	Alix Hildal
15	Jessica Hiskey
21	Mandy McCalla
1	Kelly McCormick
22	Jennifer Miller
12	Meghan O'Rourke
11	Emily Reid
5	Georgia Russell
2	Samantha Sanders
19	Virginia Seiler
13	Emily Sinovich
6	Rafaelle Souza
31	Brianna Supulski
10	Brooke Theobald
28	Margaret Thomas
0	Emily Wilber

ROSTER BREAKDOWN

BY CLASS

Senior | 3

Alix Hildal, Meghan O'Rourke, Emily Sinovich

Juniors | 7

Maddie Cunningham, Kim Duff, Erin Emerson, Mandy McCalla, Emily Reid, Rafaelle Souza, Brianna Supulski

Sophomores | 4

Mary Louise Clawson, Kelly McCormick, Virginia Seiler, Margaret Thomas

Freshmen | 11

Bethany Bunker, Sara Coleman, Sydney Eddy, Maddie Friedmann, Olivia Harrison, Jessica Hiskey, Jessica Miller, Georgia Russell, Samantha Sanders, Brooke Theobald, Emily Wilber

Newcomers | 12

Bethany Bunker, Sara Coleman, Sydney Eddy, Maddie Friedmann, Olivia Harrison, Jessica Hiskey, Jennifer Miller, Georgia Russell, Samantha Sanders, Brianna Supulski, Brooke Theobald, Emily Wilber

BY HOME STATE/COUNTRY

Brazil | 1

Rafaelle Souza

California | 2

Kelly McCormick, Emily Wilber

Georgia | 5

Erin Emerson, Mandy McCalla, Meghan O'Rourke, Virginia Seiler, Brooke Theobald

Kentucky | 2

Maddie Cunningham, Margaret Thomas

Mississippi | 2

Sara Coleman, Georgia Russell

Missouri | 3

Maddie Friedmann, Jennifer Miller, Emily Sinovich

North Carolina | 1

Kim Duff

Ohio | 1

Alix Hildal

Tennessee | 4

Bethany Bunker, Sydney Eddy, Olivia Harrison, Jessica Hiskey

Texas | 3

Mary Louise Clawson, Emily Reid, Brianna Supulski

Wisconsin | 1

Samantha Sanders

PRONUNCIATION GUIDE

Alix Hildal	HILL-doll
Mandy McCalla	mah-CALL-ah
Virginia Seiler	Sigh-lur

MEDIA INFORMATION

INTERVIEWS

All interview requests should be arranged through the Ole Miss Athletics Media Relations Department. Contact Bill Bunting by phone (662-915-1083/662-816-5862) or e-mail (wbunting@olemiss.edu) to set up a time convenient to all parties. Coaches and players will be available for interview following their workout. Should an interview need to be conducted at a different time of day, please contact the Ole Miss Athletics Media Relations office no less than a day in advance. Following games, interviews will be held on the playing field immediately after the match or following the team's 10-minute postgame meeting.

PRESS AREA

The Ole Miss Soccer Stadium, located on Hathorn Road behind the Gillom Sports Center in Oxford, has a fully functional press box to meet the needs of members of print, radio and TV media. Notes, statistics and box scores will be provided for the working media in the press box for each Rebel match. The press box phone number is 662-915-7851, and telephone lines and ethernet hookup will be available for reporters and visiting SIDs. Should you need a phone line for radio/TV purposes, please notify the Ole Miss Athletics Media Relations office at least one week in advance.

PHOTOGRAPHERS

Photographers who wish to attend Ole Miss soccer matches should contact Bill Bunting in the Ole Miss Athletics Media Relations office at least one day prior to the match. Photographers may shoot from the sidelines at Ole Miss Soccer Stadium, excluding the team bench areas. Shooting from the endline is permitted with the exception of directly behind the goals. Please keep a safe distance from the playing area.

INTERNET

Up-to-the-minute results, statistics, game stories and coach/player bios can be freely obtained through the official athletics web site, **OleMissSports.com**. Live statistics for all home matches will be available, while updates of scores, weather and upcoming special events are also available through Facebook, Twitter and Blogspot. **RebelVision**, the website's premium content channel, offers live video and audio streaming of select Ole Miss sporting events and features player and coaches interviews as well as archived footage of games and interviews with Rebel athletes and coaches. Visit OleMissSports.com for subscription information.



SOCCKER MEDIA CONTACT

Associate Director: Bill Bunting
Office Phone: 662.915.1083
Cell Phone: 662.816.5862
E-Mail: wbunting@olemiss.edu

PRIMARY MEDIA CONTACTS

OXFORD MEDIA

Oxford Eagle.....	662-234-4331
Daily Mississippian (campus).....	662-915-5503
Ole Miss Spirit/Scout.com.....	662-236-2667
RebelGrove.com/Rivals.com.....	662-238-7762
Game Time Rebels/Rebels247.com	662-832-8023
WQLJ-FM 93.7.....	662-236-0093
WBUD-FM 102.1.....	662-236-2120
WWMS-FM 97.5	662-234-6881
WOXD-FM 95.5.....	662-234-9631
WUMS-FM 92.1 (campus).....	662-915-5395
UMTV (campus).....	662-915-5508

ADDITIONAL MEDIA

Associated Press.....	601-948-5897
Mississippi Network.....	601-957-1700
The Clarion-Ledger.....	601-961-7294
Commercial Appeal.....	901-529-2360
Northeast Mississippi Daily Journal.....	662-842-2611
Biloxi Sun Herald.....	228-896-2100
Commercial Dispatch.....	662-328-2471
Meridian Star.....	601-485-1203
West Point Times Leader.....	662-494-1422
Vicksburg Evening Post.....	601-636-4545
Natchez Democrat.....	601-442-9101
Delta Democrat Times.....	662-335-1155
Daily Sentinel-Star.....	662-226-4322
Clarksdale Press Register.....	662-627-2201
Bolivar Commercial.....	662-843-4241
Daily Leader.....	601-833-6961
Hattiesburg American.....	601-582-4341
Greenwood Commonwealth.....	662-453-2908
Daily Corinthian.....	662-287-6111
WCBI-TV (CBS).....	662-245-0133
WTVA-TV (NBC).....	662-842-7620
WREG-TV (CBS).....	901-543-2117
WMC-TV (NBC).....	901-726-0416
WPTY-TV (ABC).....	901-321-7617
WHBQ-TV (Fox).....	901-320-1345
WJTV-TV (CBS).....	601-944-4920
WLBT-TV (NBC).....	601-960-4428
WAPT-TV (ABC).....	601-922-1652
WABG-TV (ABC).....	662-332-0949
WXVT-TV (CBS).....	662-334-1500
WTOK-TV (ABC).....	601-693-6397
WLOX-TV (ABC).....	228-896-1313
WDAM-TV (NBC).....	800-844-0730

MEDIA INFORMATION

REBELS ON TELEVISION

Since the birth of SEC soccer in 1995, the Rebels have been among the league's most televised clubs. Ole Miss has played in 23 televised matches, including a school-record four appearances in 2010. The Rebels are scheduled for at least one TV appearances this year - October 21 at home versus Tennessee (SportSouth).

The Ole Miss Soccer Stadium has previously hosted seven TV broadcasts, including the championship game of the 2002 SEC Tournament. The Rebels' 1995 matchup at Arkansas was the first SEC soccer match on TV.

ALL-TIME TELEVISION RESULTS

DATE	OPPONENT	BROADCAST	LOCATION	RESULT
9-10-95	at Arkansas	Local	Fayetteville, Ark.	L, 1-2
10-20-96	at Florida	Sunshine	Gainesville, Fla.	L, 0-8
9-28-97	Alabama	FSN South	Oxford, Miss.	L, 0-3
10-15-99	at Kentucky	FSN South	Lexington, Ky.	L, 1-2
11-7-99	vs. Florida	FSN South	Nashville, Tenn. (<i>SEC Tour.</i>)	L, 0-3
10-20-00	at Georgia	FSN South	Athens, Ga.	W, 3-2
10-22-00	at Tennessee	CSSE	Knoxville, Tenn.	L, 0-3
10-21-01	Vanderbilt	FSN South	Oxford, Miss.	W, 1-0
10-20-02	at Vanderbilt	FSN South	Nashville, Tenn.	T, 0-0 (2OT)
9-21-03	at Florida State	Sunshine	Tallahassee, Fla.	L, 1-2 (OT)
10-8-04	at Alabama	FSN South	Tuscaloosa, Ala.	L, 0-1 (OT)
10-8-06	at Alabama	FSN South	Tuscaloosa, Ala.	W, 4-0
9-30-07	at LSU	FSN South	Baton Rouge, La.	T, 1-1 (2OT)
9-27-09	Auburn	ESPNU	Oxford, Miss.	W, 3-2 (2OT)
10-9-09	at Georgia	FS South	Athens, Ga.	W, 1-0
10-11-09	at Tennessee	ESPNU	Knoxville, Tenn.	T, 1-1 (2OT)
9-26-10	at Auburn	ESPNU	Auburn, Ala.	W, 2-1
10-1-10	at South Carolina	Fox Soccer Channel	Columbia, S.C.	L, 0-3
10-10-10	Tennessee	CSS	Oxford, Miss.	L, 1-3
10-17-10	Arkansas	FS South	Oxford, Miss.	T, 4-4 (2OT)
9-23-11	at Arkansas	Cox	Fayetteville, Ark.	L, 1-2 (OT)
10-14-11	Florida	FS Florida	Oxford, Miss.	L, 0-2
10-28-11	Mississippi State	FS South	Oxford, Miss.	W, 2-0



SOCIAL MEDIA



www.Facebook.com/OleMissSports
www.Facebook.com/OleMissSoccer



www.Twitter.com/OleMissNow
www.Twitter.com/CoachMattMott
www.Twitter.com/OleMissSoccer



www.OleMissSports.com/Blog

TELEVISION/RADIO ROSTER



0 • Emily Wilber
Fr. • GK • 5-6
Sonoma, Calif.



1 • Kelly McCormick
So. • GK • 5-7
Laguna Niguel, Calif.



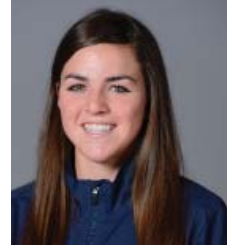
2 • Samantha Sanders
Fr. • D • 5-8
West Allis, Wis.



3 • Erin Emerson
Jr. • MF • 5-2
Fayetteville, Ga.



4 • Alix Hildal
Sr. • F • 5-5
Cincinnati, Ohio



5 • Georgia Russell
Fr. • D • 5-8
Tupelo, Miss.



6 • Rafaelle Souza
Jr. • F • 5-7
Salvador, Brazil



7 • Bethany Bunker
Fr. • F • 5-8
Memphis, Tenn.



8 • Maddie Friedmann
Fr. • D/MF • 5-6
St. Louis, Mo.



9 • Sydeny Eddy
Fr. • MF/F • 5-6
Franklin, Tenn.



10 • Brooke Theobald
Fr. • D • 5-7
Marietta, Ga.



11 • Emily Reid
Jr. • MF • 5-7
McKinney, Texas



12 • Meghan O'Rourke
Sr. • MF • 5-5
Peachtree City, Ga.



13 • Emily Sinovich
Sr. • D • 6-0
St. Louis, Mo.



14 • Sara Coleman
Fr. • F • 5-4
Laurel, Miss.



15 • Jessica Hiskey
Fr. • D • 5-4
Franklin, Tenn.



16 • Mary Louise Clawson
So. • MF/F • 5-6
Houston, Texas



17 • Maddie Cunningham
Jr. • D • 5-6
Louisville, Ky.



19 • Virginia Seiler
So. • D • 5-7
Atlanta, Ga.



20 • Olivia Harrison
Fr. • MF/F • 5-8
Collierville, Tenn.



21 • Mandy McCalla
Jr. • F • 5-8
Fayetteville, Ga.



22 • Jennifer Miller
Fr. • MF • 5-1
St. Louis, Mo.



26 • Kim Duff
Jr. • D/MF • 5-8
Greensboro, N.C.



28 • Margaret Thomas
So. • D • 5-6
Benton, Ky.



31 • Brianna Supulski
Jr.-TR. • GK • 6-0
Carrollton, Texas



**Head Coach
Matthew Mott**
3rd season
UCF, 2000



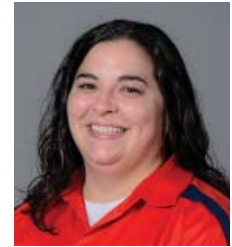
**Assistant Coach
Becky Fletcher**
3rd season
Erskine College, 1998



**Assistant Coach
Rob Thompson**
3rd season
Lock Haven, 1995



**Director of Operations
Ronda Brooks**
1st season
Auburn, 2008



**Erica Wilburn
Athletic Trainer**
8th season
West Alabama, 2002



2012 OLE MISS REBELS

Back row (L to R): Assistant coach Rob Thompson, Brooke Theobald, Olivia Harrison, Sam Sanders, Brianna Supulski, Emily Sinovich, Mandy McCalla, Rafaelle Souza, Emily Reid, Georgia Russell, Kim Duff, Mary Louis Clawson, Virginia Seiler, head coach Matt Mott.

Middle row (L to R): Strength and conditioning coach Randall Dorvin, athletic trainer Erica Wilburn, Margaret Thomas, Meghan O'Rourke, Erin Emerson, Alix Hildal, Maddie Cunningham, Kelly McCormick, director of operations Ronda Brooks, assistant coach Becky Fletcher.

Front row (L to R): Manager Lorrie Phillips, Jenn Miller, Sara Coleman, Sydney Eddy, Jess Hiskey, Maddie Friedmann, Emily Wilber, Bethany Bunker, manager Mike Melton.

2012 OLE MISS REBEL TEAM CAPTAINS



3 • Erin Emerson
Jr. • MF • 5-2
Fayetteville, Ga.



4 • Alix Hildal
Sr. • MF • 5-5
Cincinnati, Ohio



21 • Mandy McCalla
Jr. • F • 5-8
Fayetteville, Ga.

INTRODUCTION



2012 SEASON OUTLOOK

Entering his third year at the helm, head coach Matt Mott faces a unique challenge entering the 2012 campaign - getting his 13 returners and 12 newcomers to gel and become one.

But, if what he has seen in preseason is any indication of what the year will hold, the team is accepting the challenge.

"The biggest challenge we have in preseason is getting everybody all together," Mott said. "With the 13 returners and the 12 newcomers, it's really like two teams that we are bringing together and making as one but they have accepted the challenge. The freshmen have come in with no fear and really battled and have the understanding that they have the ability to play. They want to prove themselves which has been huge for us."

In addition to a group of talented newcomers, Mott also returns a core of veterans including two-time All-SEC selection Alix Hildal, Mandy McCalla, Erin Emerson and the team's leading offensive threat from a year ago, Ra-faelle Souza.

"Those four have all come in in great shape and are playing great," Mott said. "Alix is still coming off of an injury but she is playing hard. Mandy looks excellent. Erin is playing very,

very well - as well as she has played since she's been here. With Rafa, you can tell the difference in her with a year played and having spent a month and a half with Brazil this summer. She's come in and looks really sharp."

Hildal, McCalla, Emerson and Souza aren't the only four who have come in fit and given Ole Miss a level of intensity which Mott hadn't seen in his first two seasons with the Rebels.

"The team has come in very fit which is always a plus," Mott said. "They are hungry and working really, really hard. Our intensity level at every training session has been really high. Our competitiveness each session has been really high. They know that there are 11 open spots and they are all trying to get them, so the battle for playing time and positions has been fantastic."

Over Mott's first two years at Ole Miss, the Rebels have narrowly missed qualifying for the SEC Tournament, missing the tournament by one point in the standings each year. The newfound intensity the team has entered camp with along with a strong number of returnees who have seen how close the team has been the last two years should give the Rebels the edge they need to push through games and meet their goal.

"We want to 'reach the beach' (the SEC Tournament in Orange Beach, Ala.) and that has been our goal," Mott said. "These guys are hungry and they know they've missed out the last two years and that they've been that close. When we've talked to the upperclassmen they really want to take the team to the tournament."

GOALKEEPER

Ole Miss will have three goalkeepers on this year's roster, two of whom have college playing experience. Sophomore Kelly McCormick played in 12 matches last year for the Rebels. She finished the year with three solo shutouts and a 1.62 GAA.

Challenging McCormick will be freshman Emily Wilber and junior transfer Brianna Supulski.

"There is a good battle going on in goal-keeping," Mott said. "Kelly is back and is starting to establish herself as our top goalkeeper which we are happy with. She has put herself in a spot to be an elite-level goalkeeper."

Wilber, a native of Sonoma, Calif., was a four-year starting goalkeeper at Sonoma Valley High School and a two-time All-League First Team Selection. Supulski played two

years at Indiana State where as a sophomore she started four games and tallied 14 saves.

DEFENDER

The Ole Miss backline will have the newest look of any position for the Rebels this year as the team will aim to replace its defense it lost to graduation last season.

In addition to returners, senior Emily Sinovich and junior Maddie Cunningham, a trio of newcomers, Sam Sanders, NCSAA All-American Maddie Friedmann and Jess Hiskey, have all made an impression on Mott and his staff during preseason camp.

"Sam has been probably the biggest surprise of the freshmen. She is playing fantastic and she's going toe-to-toe with Rafa and Mandy and has done really well," Mott said. "Maddie Friedmann is coming off an injury but she has come in and has established herself as somebody who we are going to take a hard look at. Jess has come in and established herself as well."

Cunningham, who played in all 19 matches last year, made marked improvements in the spring and Mott expects her progress to carry over to the fall. Sinovich will give Ole Miss experience on the backline as she started 18 games last year.

Freshman Georgia Russell, a Tupelo, Miss., native who enrolled in Ole Miss in the spring, will also challenge for time in the Rebel defense. Other players who will look for playing time are, sophomores Virginia Seiler and Margaret Thomas, and freshman Brooke Theobald.

MIDFIELD

The Rebel midfield will return a strong core of players including two-time All-SEC honoree Alix Hildal and Erin Emerson. Newcomers Jenn Miller, Sara Coleman, Bethany Bunker and NSCAA All-American Olivia Harrison look to break into the Rebel midfield and earn time.

"Alix and Erin certainly will play in the midfield," Mott said. "Jenn has come in and impressed and I think she will play an attacking role for us. Sara, Bethany and Olivia have all come in in the midfield/forward roles for us and they look sharp and fit. Those three have come in and are really battling for one or two spots and I think we will start one of those freshmen in those spots."

Also returning to the Rebel midfield are

sophomore Kim Duff, senior Meghan O'Rourke, junior Emily Reid and freshman Sydney Eddy, who could also see time up top.

FORWARD

Up top, the Rebels return a pair of forwards who combined for 14 goals and 11 assists last season in juniors Mandy McCalla and Rafaelle Souza.

"Rafa and Mandy are returning and we are going to rely on them a lot for a scoring punch," Mott said. "I think they are both poised to have really years."

The pair also finished last season 1-2 on the team in shots, with Souza taking a team-leading 54 followed by McCalla's 44, and combined for five game-winning goals.

SCHEDULE

The Rebels' schedule for the fall will pit Ole Miss against 10 teams that advanced to the NCAA Tournament in 2011 and will include 12 home games.

"We play a good schedule," Mott said. "We open up with Saint Louis at home and that is typically a good team. Then we go to Middle Tennessee State, which will be hard because it will be their home opener so we have to be prepared for them. We finish the non-conference at home, which will be nice to end with a five-game home stand right into conference play at home."

Ole Miss will open SEC play at home on September 14 and 16, hosting Arkansas and conference newcomer Texas A&M.

"We open conference play at home against Arkansas and they have a new coach so we don't really know what to expect from them but I think they will be much improved," Mott said. "Then we have Texas A&M, who is going to be one of the best teams, not only in the league but in the country, so that will be a handful for us that weekend."

The 2012 edition of the SEC Tournament will be held October 29 - November 4 in Orange Beach, Ala.

"We are excited for the year," Mott said. "The girls are talking about starting the season and we are focusing on Saint Louis right now and trying to prepare for them. I think that we have to mold these pieces together through the non-conference and get them ready to play and make a good conference run."



Mandy McCalla



Alix Hildal



HEAD COACH MATTHEW MOTT

THIRD YEAR | UCF | 2000

HEAD COACH AT OLE MISS: 2010-PRESENT

Matthew Mott, who enters his third year as head coach in 2012, was named the second women's soccer head coach in Ole Miss history on May 10, 2010.

During his second season at the helm in 2011, several of Mott's players earned both athletic and academic honors. Three players earned All-SEC honors (Meredithe Snow, Dylan Jordan and Alix Hildal) while Hildal was also named to the 2011 NCAA Women's Division I All-South Third Team.

Academically, Jordan was named a Capital One Third Team Academic All-American by CoSIDA while Jenna Strother was named a 2011-12 Who's Who Among Students in American Universities and Colleges for the University of Mississippi. As a

team, the Rebels earned the NSCAA Team Academic Award for the 2010-11 academic year for a team GPA above 3.0.

In 2011, Mott's team saw improvement from the 2010 season as the team finished the year winning its final three SEC games of the year including a 2-0 win over Mississippi State for the Magnolia Cup. The Rebels, who ended the year 8-10-1 overall (4-7 SEC), scored 11 more goals in 2011 than 2010.

During his first season with the Rebels, Mott led his program to a 7-9-4 overall record and a 3-5-3 mark in SEC play. During the season, Mott's team knocked off No. 25 Auburn on the road, 2-1, and recorded a 0-0 double overtime tie against No. 18 Georgia.

A pair of his players (Alix Hildal and Mandy McCalla) was named to the All-SEC Second Team and SEC All-Freshman Team, respectively, while Dylan Jordan and Taylor Cunningham (CoSIDA ESPN Academic All-District First Team and SEC Community Service Team) earned honors for their accolades off the field. In addition, three players also garnered player of the week honors from the SEC.

The top assistant coach at the University of Texas from 2006-10, Mott helped the Longhorns to three NCAA Tournament appearances, including back-to-back Sweet Sixteen berths in 2006 and 2007. The 2007 squad rose as high as No. 1 in the national rankings. Working with the goalkeepers and defenders, Mott





helped guide UT to a school record for lowest goals against average (0.64 in 2008) and several other defensive records during his tenure.

No stranger to the Southeastern Conference, Mott assisted Karen Hoppa at Auburn from 1999-2005. He was promoted from assistant to assistant head coach to associate head coach during his time on the Plains and helped the Tigers to four straight NCAA Tournaments and four straight SEC West titles from 2001-04. He was named the AFLAC National Assistant Coach of the Year in 2002 when Auburn claimed the SEC overall championship. As Auburn's recruiting coordinator, Mott brought in six nationally ranked signing classes and helped develop several players to All-SEC and All-America honors.

The Norwood, N.Y., native served as an assistant coach at his alma mater, Central Florida, for four years under Hoppa prior to his stint at Auburn. While there, the Golden Knights won three Trans Atlantic Athletic Conference Championships and earned an NCAA Tournament berth in 1998.

Before UCF, Mott was the head women's coach at Division III Hilbert College in Hamburg, N.Y., where he became

the winningest coach in school history during his tenure from 1991-94. He was also the goalkeepers coach for the men's team at Hilbert during that time.

Mott obtained a bachelor's degree in general studies and a minor in criminal justice from UCF in 2000 and also earned an Associate of Science degree in 1994 from Erie Community College in Buffalo, N.Y. Before college, Mott spent four years in the U.S. Coast Guard where he played and coached with the Coast Guard's select team in Portsmouth, Va.

Mott holds a National "B" Coaching License from the United States Soccer Federation. In addition to his college coaching positions, he has served as the goalkeepers coach for the USYSA Region III Olympic Development Program team since 2003.

He is married to the former Jennifer Swartz. They have two sons, Dean and Will, and a daughter, Tacie.

Mott's Collegiate Coaching Stops

Year	Team	Position
2012	Ole Miss	Head Coach
2011	Ole Miss	Head Coach
2010	Ole Miss	Head Coach
2009	Texas	Assistant Coach
2008	Texas	Assistant Coach
2007	Texas	Assistant Coach
2006	Texas	Assistant Coach
2005	Auburn	Associate Head Coach
2004	Auburn	Associate Head Coach
2003	Auburn	Assistant Head Coach
2002	Auburn	Assistant Head Coach
2001	Auburn	Assistant Head Coach
2000	Auburn	Assistant Coach
1999	Auburn	Assistant Coach
1998	UCF	Assistant Coach
1997	UCF	Assistant Coach
1996	UCF	Assistant Coach
1995	Hilbert College	Head Coach
1994	Hilbert College	Head Coach
1993	Hilbert College	Head Coach
1992	Hilbert College	Head Coach
1991	Hilbert College	Head Coach

Career Record: 15-19-5

SEC Record: 7-12-3



ASSISTANT COACH BECKY FLETCHER

THIRD YEAR | ERSKINE COLLEGE | 1998

ASSISTANT COACH AT OLE MISS: 2010-PRESENT

Becky Fletcher enters her third year as an assistant coach at Ole Miss in 2012.

With the Rebels, Fletcher is the recruiting coordinator in addition to working with the midfielders and defenders. She is also in charge of equipment, is the academic and marketing liaison and organizes community service for the team.

In 2011, the Ole Miss backline helped the team post seven shutouts while the team finished the year with a 8-10-1 overall record (4-7 SEC). In addition, she helped coach defender Meredith Snow and midfielder Dylan Jordan to All-SEC honors.

During her first season with Ole Miss in 2010, she helped lead the Rebels to a 7-9-4 overall record and a 3-5-3 mark in SEC play. Defender Alix Hildal was named SEC Offensive Player of the Week after recording a hat trick against Vanderbilt, while midfielder Mandy McCalla, who led the team in assists with six, was named to the SEC All-Freshman team.

After two seasons as the head coach at Tennessee Tech, Fletcher was hired as an assistant coach for the Ole Miss soccer program on May 25, 2010.

In her two seasons as the head coach of the Golden Eagles, Fletcher led them to back-to-back Ohio Valley Conference tournaments after not having made an appearance since 2003. She also directed TTU to the 2009 OVC Tournament championship game, its first appearance since 2000.

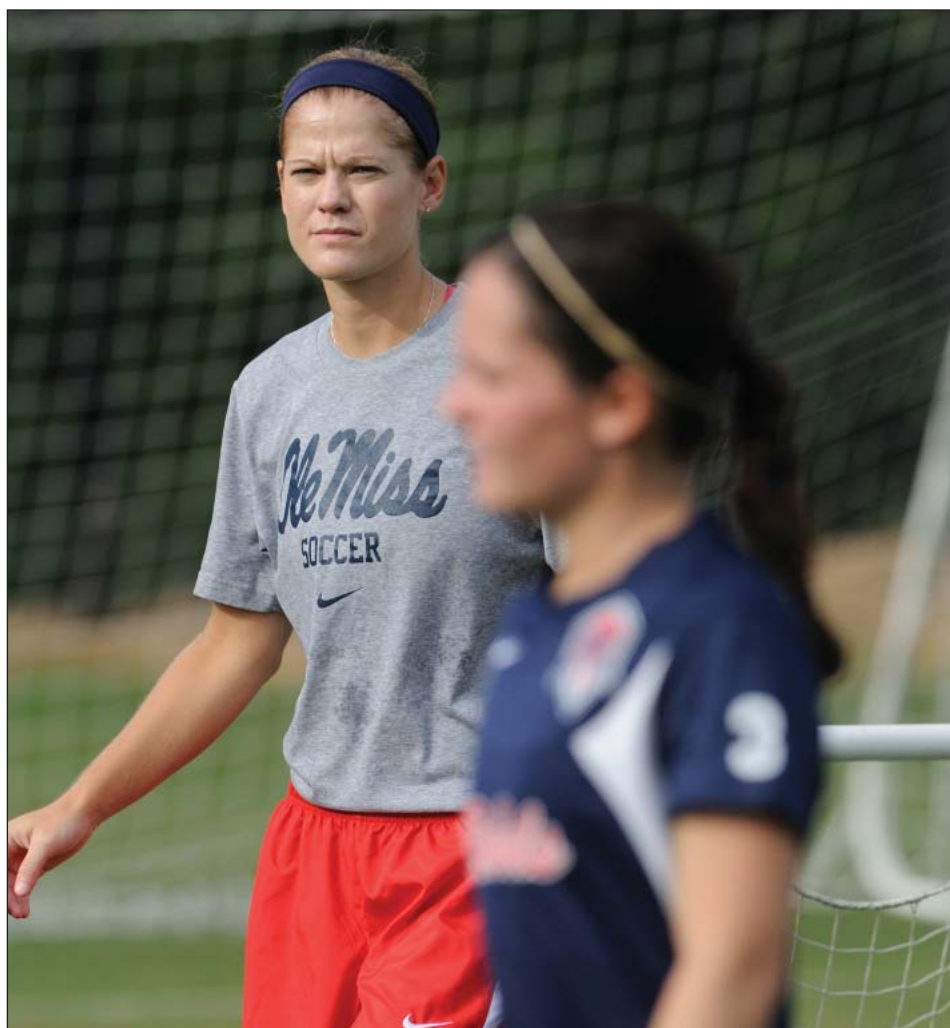
No stranger to the Southeastern Conference, Fletcher was an assistant alongside Mott at Auburn from 2003-08. She helped Karen Hoppa's team reach a number of achievements during her time on the Plains, including three SEC West titles, four

trips to the NCAA Tournament and a record of 58-34-11 (.617).

After Mott left for Texas, Fletcher was tabbed as Auburn's recruiting coordinator and helped land three nationally ranked classes.

The Columbia, S.C., native started as an assistant at her alma mater, Erskine College (Due West, S.C.), in 1998 before spending three seasons as an assistant at Tennessee Tech. She went back to Erskine

as the school's head coach for one year before joining the Auburn staff. She has also served as a member of the Olympic Development Program staff for Region III since 1997, helping develop some of the top soccer talent in the Southeast. Fletcher holds a bachelor's degree in physical education from Erskine College (1998) and a master's in health and physical education from Tennessee Technological University (2001).





ASSISTANT COACH ROB THOMPSON

THIRD YEAR | LOCK HAVEN | 1995

ASSISTANT COACH AT OLE MISS: 2010-PRESENT

Rob Thompson enters his third year as an assistant coach in 2012 in charge of goalkeepers.

In 2011, goalkeepers Alley Ronaldi and Kelly McCormick recorded a combined seven shutouts as the team finished the year 8-10-1 overall (4-7 SEC). Ronaldi was named SEC Defensive Player of the Week on August 29. Ole Miss opened the year holding its opponents scoreless for the first 455 minutes of the season, marking the longest scoreless streak in program history.

During 2010, Thompson helped Ole Miss to a 7-9-4 overall record and a 3-5-3 record in SEC play. His goalkeepers, Sarah Story and Alley Ronaldi, recorded a combined six shutouts on the year. In addition, Story set program records for saves in a game (17) and in a season (109).

Thompson brings high-level experience in training goalkeepers to the Rebel program. Following a two-year hiatus from college coaching for family reasons, he came back to the SEC, where he was an assistant at Georgia from 2005-08.

While in Athens, he helped lead the Bulldogs to their first NCAA Tournament berth since 2003 and just their second appearance in the SEC Tournament championship game. Georgia went 40-19-4 during his three seasons, and he helped develop goalkeeper Michelle Betos into an SEC All-Freshman pick who would go on to rank among the all-time school and conference leaders in shutouts and saves.

Thompson was an assistant at Florida State for two seasons, where he helped the Seminoles reach back-to-back NCAA Tournaments, including the 2003 College Cup Semifinals. He trained goalkeeper Joy

McKenzie to All-ACC and All-Region status, while she broke several school records along the way.

A native of Grimbsy, England, his extensive experience as a goalkeeper coach on the professional and collegiate levels also includes the WUSA's New York Power (2002-03), Adelphi University men (2001-02), the A-League's Long Island Rough Riders (1998-01) and Lock Haven University men and women (1995-98).

He has also been a member of the ODP Region III coaching staff since 2003.

Thompson holds bachelor's and master's degrees from Lock Haven University (Pa.), where he was a three-time all-conference and two-time all-region player in soccer. He is married to the former April Murphy and the couple has a son, Michael.



SOCCKER SUPPORT STAFF



Lynnette Johnson
Executive Associate
Athletics Director

Lynnette Johnson is in her 23rd year overall with Ole Miss Athletics. Currently, she is in her 14th year as a Sport Administrator and Senior Woman Administrator. She is the Sport Administrator for eight intercollegiate programs, which include: soccer, volleyball, rifle, women's basketball, men's and women's golf and tennis. She also handles multiple internal and external operations involving all sports programs and several departments.

During her first nine years, Johnson was a member of the Sports Medicine staff. She became the first female head athletic trainer in the Southeastern Conference in 1997.

During her 14 years as a sport administrator, the programs that she has worked with have been very successful. Collectively, they have won three SEC Regular Season titles, 14 Western Division titles, three SEC Tournament titles and made over 30 NCAA tournament appearances; which include several Sweet Sixteen, Elite Eight and Final Four appearances. Individual student-athlete accomplishments have been just as impressive with multiple All-America honors,

SEC Champions, NCAA Champions and two Olympians.

Johnson is also responsible for coordinating and bidding all NCAA and SEC postseason events held on campus. Ole Miss has hosted SEC men's and women's tennis, track and field, cross country, softball and soccer and is scheduled to host the SEC Women's Tennis Championship in April 2012. The NCAA has also found a home at Ole Miss, hosting men's and women's tennis regionals, five baseball regionals and three baseball super regionals.

Academically, the teams are excelling in the classroom as well; putting up high graduation rates, multiple Academic All-America honors and Taylor Medalists, as well as the first athlete to be inducted into the school's Phi Beta Kappa Honor Society chapter.

The Pittsburgh, Pa., native is a 1988 graduate of East Carolina University and a 1990 graduate of Ole Miss with a master's degree in Education. She is married to Tal Johnson and the couple has two daughters, Alexandria and Samantha.



Ronda Brooks
Director of
Operations



Mike Melton
Team Manager



Lorrie Phillips
Team Manager



Erica Wilburn
Athletic Trainer



Randall Dorvin
Strength & Conditioning
Coach



Abigail M. Drescher
Academic Counselor



Betty Drewrey
Senior Staff Assistant



Alicia Meredith
Event Management
Coordinator



Connie Braseth
Marketing Coordinator



#4 ALIX HILDAL

SENIOR | 3L | MIDFIELD | 5-5
CINCINNATI, OHIO | SYCAMORE HS

GAME HIGHS

Shots: 5 (vs. The Citadel, 9-12-11)

Goals: 3 (at Vanderbilt, 10-24-10)

Assists: 1 (four times)

Points: 6 (at Vanderbilt, 10-24-10)

2011 (JUNIOR SEASON): Named to the All-SEC Second Team for the second consecutive season ... Also named to the 2011 NCAA Women's Division I All-South Third Team ... Started all 19 games for the Rebels ... Finished the year fourth on the team in points with 11 and fourth on the team in goals with four ... Scored goals in wins against Jackson State, The Citadel, Vanderbilt and at Kentucky ... Took 35 shots during the season with 15 on goal ... Recorded the game-winning goal at Kentucky.

2010 (SOPHOMORE SEASON): Second-team All-SEC selection ... Started all 20 games during the year ... Ended the season with six goals and one assist as a defender ... Recorded a hat trick in Ole Miss' 3-2 come-from-behind win at Vanderbilt ... Went 2-for-2 in penalty kicks against Vanderbilt ... Helped the Rebels record six shutouts during the season ... Finished second on the team in goals with six and third in points with 13 ... Named SEC Offensive Player of the Week on October 25 ... Named to the SEC Honor Roll, the Chancellor's Honor Roll in the Fall and the UMAA Honor Roll in the Spring.

2009 (FRESHMAN SEASON): Started all 21 matches at left back ... Helped a Rebel defense that ranked second in the SEC and 17th in the nation with a 0.64 goals-against average ... Ranked fifth on the team with 1,859 minutes played (out of a possible 1,958) ... Played the full match 17 times, including all 11 league contests ... Attempted seven shots on the season, including five on-goal ... Chancellor's Honor Roll for Spring.

HIGH SCHOOL: Helped Sycamore High School to a pair of Greater Miami Conference titles and a dis-

trict championship in her four years ... As a senior, she set the school record for goals in a season with 19 and was named first team All-State by the Ohio Scholastic Soccer Coaches Association ... Also was tabbed Greater Miami Conference Athlete of the Year, All-City and All-District ... Earned Senior All-Star Game MVP honors ... Was All-District on one other occasion and All-Conference first team two more times ... Honor roll student, graduated with Honors ... Served as a Fast Track mentor.

ODP: A member of the Ohio South team ... Participated in Region II Camp in 2007.

CLUB TEAM: Teamed with fellow Rebel Meredith Snow to help Ohio Elite reach the 2009 USYSA National Championship game and finish runner-up ... Helped Ohio Elite to seven straight Ohio State Cup titles and a third-place national finish in 2008 ... Team was ranked as high as No. 1 in the country by NationalSoccerRanking.com and GotSoccer.com.

PERSONAL: Born Dec. 23, 1990 ... Full name is Alix Joy Hildal ... Daughter of Rick and Robyn Hildal ... Majoring in Marketing.



CAREER STATISTICS

Year	GP-GS	Goals	Assists	Points	Shots	GWG
2009	21-21	0	0	0	7	0
2010	20-20	6	1	13	15	1
2011	19-19	4	3	11	35	1
TOTAL	60-60	10	4	24	57	2



#12 MEGHAN O'ROURKE

SENIOR | 1L | MIDFIELD | 5-5
PEACHTREE CITY, GA. | MCINTOSH HS | MERCER UNIVERSITY

GAME HIGHS

Shots: 1 (two times)
Goals: 1 (vs. Jackson State, 8-28-11)
Points: 2 (vs. Jackson State, 8-28-11)

2011 (JUNIOR SEASON): Saw playing time in 12 games during the year ... recorded two shots on the season against Jackson State and Alabama ... Scored her first career goal in a 8-0 win over Jackson State.

MERCER UNIVERSITY: Played soccer at Mercer University in 2009-10. Did not play soccer in 2010-11.

HIGH SCHOOL: Attended McIntosh High School in Peachtree City, Ga. ... Was a member of the varsity soccer team all four years ... Named to the Georgia 4A high school all-region team for three years ... Also named Fayette County Student-Athlete of the Week ... Member of a peer leadership program ... Volunteered at the Hope House and a church confirmation program.

CLUB: Played club for AFC Lightning '91 ... Won a pair of Atlanta Cup tournament championships ... Georgia State runner up in 2007.

ODP: Member of the Georgia State ODP team for five years ... Attended the Region III camp for two years.

PERSONAL: Born June 14, 1991 ... Full name is Meghan Taylor O'Rourke ... Daughter of Dawn and Brian O'Rourke ... Majoring in Marketing ... Enjoys traveling and has been to China, Jamaica, Cancun and Singapore.



CAREER STATISTICS

Year	GP-GS	Goals	Assists	Points	Shots	GWG
2011	12-0	1	0	2	2	0
TOTAL	12-0	1	0	2	2	0



#13

EMILY SINOVICH

SENIOR | 1L | DEFENSE | 6-0
ST. LOUIS, MO. | INCARNATE WORLD ACADEMY | UAB

GAME HIGHS

Shots: 1 (two times)

2011 (JUNIOR SEASON): Started 18 games during her first season with the Rebels ... Took two shots on the year ... As a defensive midfielder, helped Ole Miss to seven shutouts on the year.

UAB: Played two years at UAB ... Appeared in 37 career matches ... As a defender, recorded seven points on three goals and one assist ... Named to the Conference USA Honor Roll and Dean's List.

HIGH SCHOOL: Attended Incarnate Word Academy in St. Louis, Mo. ... Was named a NSCAA First Team All-American as a senior ... Two-time Missouri High School State Champion in 2008 and 2009 ... As a senior, earned All-State, All-Conference, All-Region and All-Metro honors ...Gatorade Player of the Year runner up.

CLUB: Played club for the St. Louis Soccer Club ... Won six consecutive state championships from 2005-10 ... Participated in the Midwest Regional League from 2005-08.

PERSONAL: Born Jan. 2, 1991 ... Full name is Emily Nicole Sinovich ... Daughter of Tim and Jerene Sinovich ... Relative of former NBA basketball player Keith Van Horn ... Majoring in Psychology.



CAREER STATISTICS

Year	GP-GS	Goals	Assists	Points	Shots	GWG
2011	18-18	0	0	0	2	0
TOTAL	18-18	0	0	0	2	0



#17 MADDIE CUNNINGHAM

JUNIOR | 2L | DEFENSE | 5-6
LOUISVILLE, KY. | BALLARD HS

GAME HIGHS

Shots: 3 (vs. McNeese State, 9-10-10)
Goals: 1 (at Arkansas, 9-23-11)
Assists: 1 (vs. McNeese State, 9-10-10)
Points: 2 (at Arkansas, 9-23-11)

2011 (SOPHOMORE SEASON): Played in all 19 games and recorded eight starts during the year ... Ended the season with two points ... Recorded her first career goals at Arkansas ... Played full matches in three games during the year.

2010 (FRESHMAN SEASON): Played in 17 of the team's 20 games and started the last four games of the year ... Recorded her first career assist in Ole Miss' 5-1 win over McNeese State ... Took seven shots during the year including three against McNeese State ... Played a career-high 90 minutes against Mississippi State ... Named to the SEC First-Year Academic Honor Roll and the UMAA Honor Roll in both the Fall and the Spring.

HIGH SCHOOL: Led Ballard High School to three straight district titles ... Named All-District and All-Region ... Finished her prep career with 52 goals and 46 assists, leading her team in both categories for three straight seasons ... Member of Beta Club, National Honor Society, Latin Club, Environmental Club and Bruin Nation.

ODP: Six-year member of Kentucky ODP team.

CLUB TEAM: Helped Javanon Soccer Club to the 2005 state championship and was her team's leading scorer the final three seasons.

PERSONAL: Born April 12, 1992 ... Full name is Madison Lynn Cunningham ... Daughter of Steve and TamBrey Cunningham ... Majoring in Exercise Science ... Older sister, Taylor, played soccer for the Rebels from 2007-10.



CAREER STATISTICS

Year	GP-GS	Goals	Assists	Points	Shots	GWG
2010	17-4	0	1	1	7	0
2011	19-8	1	0	2	2	0
TOTAL	36-12	1	1	3	9	0



#26 KIM DUFF

JUNIOR | 1L | MIDFIELD/DEFENSE | 5-8
GREENSBORO, NC | MITCHELL HS DAKOTA | WESLEYAN UNIVERSITY

2011 (SOPHMORE SEASON): Made eight appearances in her first season with Ole Miss ... Played a career-high 40 minutes in Ole Miss' 8-0 win over Jackson State.

DAKOTA WESLEYAN UNIVERSITY: Played the 2010 season at Dakota Wesleyan University in Mitchell, South Dakota ... Named to the All-Conference Honorable Mention team ... Was the co-leader in goals scored with 14 and was ranked nationally in NAIA for goals ... Four goals were game winners ... Also recorded four assists ... Trained in Trinidad and Tobago for four weeks.

HIGH SCHOOL: Attended Mitchell High School in Mitchell, South Dakota ... Participated in track, swimming and tennis in addition to soccer ... Three-time Second Team All-State honoree ... Named to the First Team All-Conference as a freshman at Ben L. Smith High School in Greensboro, N.C. ... Also served as a team captain.

CLUB: Played club for Dakota Gold Soccer Club ... Won three South Dakota State championships.

ODP: South Dakota does not have an ODP team but twice was a participant in the ODP Region III SubRegional Tournament.

PERSONAL: Born April 17, 1991 ... Full name is S. Kimberly Duff ... Daughter of Scott and Susan Duff ... Has lived in four different states (New Hampshire, North Carolina, South Dakota and Mississippi) ... Siblings also play soccer ... Loves all kinds of sports including motocross ... Majoring in Park and Recreation Management.



CAREER STATISTICS

Year	GP-GS	Goals	Assists	Points	Shots	GWG
2011	8-0	0	0	0	0	0
TOTAL	8-0	0	0	0	0	0



#3

ERIN EMERSON

JUNIOR | 2L | MIDFIELD | 5-2
 FAYETTEVILLE, GA. | WHITEWATER HS

GAME HIGHS

Shots: 8 (vs. Arkansas, 10-17-10)
 Goals: 2 (two times)
 Assists: 2 (vs. The Citadel, 9-12-11)
 Points: 4 (two times)

2011 (SOPHOMORE SEASON): Started all 19 games ... Finished the season fifth on the team in points with eight ... Scored two goals on the season, both in a win over Jackson State ... Recorded four assists during the year ... Took 30 shots during the season with 13 on goal.

2010 (FRESHMAN SEASON): Started all 20 games during her first year with Ole Miss ... Recorded nine points during the season on three goals and three assists ... Scored two goals in Ole Miss' 4-4 double overtime tie with Arkansas ... Tied with Dylan Jordan and Mandy McCalla for the team lead in shots with 53 ... Led the team in shots on goal with 31 ... Recorded one game-winning goal on the year against Southern Miss ... Named to the SEC First-Year Academic Honor Roll and to the Chancellor's Honor Roll in both the Fall and the Spring.

HIGH SCHOOL: Led Whitewater High School to a state title in 2007, a runner-up finish in 2010 (to Mandy McCalla's team) and semifinal appearances two more times ... Named a 2009 High School All-America honorable mention by ESPN RISE after scoring 48 goals for Whitewater as a junior ... Also named the 2009 City and Region Player of the Year ... Rated the No. 15 prospect in the South Atlantic Region by Top Drawer Soccer ... Four-time All-Region selection ... Participated in the 2010 Georgia All-Star game ... A NSCAA/adidas High School Scholar All-American ... Member of National Honor Society, Beta Club and other academic and service organizations.

ODP: A Region III pool player in 2009 and 2010 and a member of Georgia's ODP team since 2003.

CLUB TEAM: Helped the AFC Lightning to a state championship and the club's first Southeastern Region championship and U.S. Youth Soccer National Championships appearance in 2010 ... Region finals appearance in 2009 ... Region semifinal berths in 2006 and 2008 and a quarterfinal appearance in 2007.

PERSONAL: Born June 22, 1992 ... Full name is Erin Marisa Emerson ... Daughter of David and Tina Emerson ... Majoring in Exercise Science ... Two older sisters played soccer at Georgia College & State University.



CAREER STATISTICS

Year	GP-GS	Goals	Assists	Points	Shots	GWG
2010	20-20	3	3	9	53	1
2011	19-19	2	4	8	30	0
TOTAL	39-39	5	7	17	83	1



#21

MANDY McCALLA

JUNIOR | 2L | FORWARD | 5-8
 FAYETTEVILLE, GA. | STARR'S MILL HS

GAME HIGHS

Shots: 9 (vs. McNeese State, 9-10-10)

Goals: 2 (two times)

Assists: 2 (two times)

Points: 5 (vs. McNeese State, 9-10-10)

2011 (SOPHOMORE SEASON): Started all 19 games for the Rebels ... Ended the year third on the team in points with 14 and second on the team in goals with five ... Recorded goals against Jackson State, UAB, Auburn and two against Mississippi State ... Also recorded four assists on the year ... Finished the year second on the team with 44 shots ... Scored one game-winning goal during the season against Mississippi State ... Played a career-high 102 minutes in an overtime tie against Wright State ... Played full matches in seven games and played over 80 minutes in 11 games.

2010 (FRESHMAN SEASON): Named to the SEC All-Freshman team ... Started all 20 games during her first season with the Rebels ... Finished the year second on the team in points (14) on four goals and a team-leading six assists ... Tied with Erin Emerson and Dylan Jordan for the team lead in shots with 53 ... Recorded five points (two goals, one assist) in the Rebels' 5-1 win over McNeese State ... Recorded two assists in a 3-0 win over Southern Miss ... Recorded four points (one goal, two assists) in the 4-4 double overtime come-from-behind tie against Arkansas ... Finished the year with four multi-point games ... Converted her first career penalty kick attempt versus Arkansas ... Logged nine full games during the year ... Was named to the All-Tournament team at the Inn at St. Mary's Classic in South Bend, Ind. ... Ended the year tied for 10th in the SEC in assists (six) ... Named to the SEC First-Year Freshman Honor Roll and to the Chancellor's Honor Roll for both the Fall and the Spring after recording a 4.0 GPA each semester.

HIGH SCHOOL: Led Starr's Mill High School to the 2010 Georgia state championship, scoring both

goals in the 2-1 title game win over Erin Emerson's squad ... Helped Starr's Mill earn a No. 18 national ranking by ESPN RISE, as the team was 21-2 overall her senior year ... 2010 Georgia Soccer Coaches Association 4A Player of the Year ... Participated in the 2010 Georgia All-Star game ... Named a 2009 High School All-America honorable mention by ESPN RISE ... Also participated in basketball ... Four-year honor roll student.

CLUB TEAM: Helped the AFC Lightning to a state

championship and the club's first Southeastern Region championship and U.S. Youth Soccer National Championships appearance in 2010 ... Region finals appearance in 2009 ... Region semifinal berths in 2006 and 2008 and a quarterfinal appearance in 2007.

PERSONAL: Born Nov. 20, 1991 ... Full name is Amanda Rose McCalla ... Daughter of John and Monica McCalla ... Majoring in Marketing ... Her older sister, Laura, played soccer at UAB.



CAREER STATISTICS

Year	GP-GS	Goals	Assists	Points	Shots	GWG
2010	20-20	4	6	14	53	0
2011	19-19	5	4	14	44	1
TOTAL	39-39	9	10	28	97	1



#11 EMILY REID

JUNIOR | 1L | MIDFIELD | 5-7
MCKINNEY, TEXAS | MCKINNEY BOYD HS | OKLAHOMA

GAME HIGHS

Shots: 4 (vs. Wright State, 9-21-11)

Goals: 2 (vs. The Citadel, 9-12-11)

Assists: 1 (two times)

Points: 5 (The Citadel, 9-12-11)

2011 (SOPHOMORE SEASON): Played in all 19 games and made 18 starts during her first season with Ole Miss ... Finished the year with two goals and two assists ... Scored two goals in a win over The Citadel ... Recorded assists against The Citadel and at Tennessee ... Scored the game-winning goal against The Citadel ... Took 21 shots during the year.

PERSONAL: Born November 25, 1991 ... Full name is Emily Morgan Reid ... Daughter of Craig and Lisa Reid ... Father played professional baseball in the San Diego Padres organization ... Wants to learn how to snowboard ... A Salvation Army Angle Tree Volunteer and a First Baptist Church of McKinney youth soccer camp instructor ... Majoring in Exercise Science.

OKLAHOMA: Played in 21 games as a freshman in 2010 ... As a midfielder, she recorded one goal and one assist for the Sooners ... Was tied for sixth on the team in shots with 23 ... Team made an NCAA Tournament appearance and was a Big 12 Conference Tournament finalist.

HIGH SCHOOL: Four-year letterwinner at McKinney Boyd High School ... During her high school career, she scored 92 goals and was a two-time First Team All-State selection ... Was ranked as the No. 18 recruit in the 2010 TopDrawerSoccer.com Regional Top 20 ... Also earned 2009 and 2010 ESPN Rise Magazine High School All-America honors ... A two-time TASCOS First Team honoree and a four-time TASCOS All-Region selection.

ODP: Was a member of the 91 North Texas State Team in 2008 and a member of the North Texas 91 State Pool in 2004 and 2006-07.

CLUB TEAM: Played for Sting '92 ... Won several championships including four North Texas State Championships, two USYS Premier League West Championships and a USYS Region III Championship.



CAREER STATISTICS

Year	GP-GS	Goals	Assists	Points	Shots	GWG
2011	19-18	2	2	6	21	1
TOTAL	19-18	2	2	6	21	1



#6

RAFAELLE SOUZA

JUNIOR | 1L | FORWARD | 5-7

SALVADOR, BRAZIL | CENTRO FEDERAL DE EDUCAÇÃO TECNOLÓGICA DA BAHIA

GAME HIGHS

Shots: 6 (two times)

Goals: 2 (three times)

Assists: 2 (vs. The Citadel, 9-12-11)

Points: 5 (vs. Jackson State, 8-28-11)

2011 (SOPHOMORE SEASON): Recorded one of the best seasons in school history by a newcomer ... Finished the season leading the team in goals (nine), assists (seven) and points (25) ... Ended the year one goal, one point and one assist away from breaking into Ole Miss' single-season record book for each category ... Scored Ole Miss' first five goals of the year and scored at least one goal in her first three career games ... Played in 16 games and made 14 starts ... Led the team with four game-winning goals against Southern Miss, Texas Tech, Jackson State and Alabama ... Took a team-leading 54 shots on the year with 28 shots on goal ... Recorded three multiple goal games with two goals in each game against Southern Miss, Jackson State and Alabama ... In 15 of the 16 games she played in, her shot on goal percentage was at least 50 percent including a perfect 100 percent with six shots and six shots on goal against Southern Miss ... Ended the year tied for fifth in the SEC in game-winning goals (4), ninth in points (25) and tied for ninth in goals (9).

HIGH SCHOOL: Attended Centro Federal de Educação Tecnológica da Bahia in Brazil.

PERSONAL: Born June 18, 1991 ... Full name is Rafaelle Leone Carvalho Souza ... Daughter of Maria das Gracas dos Reis Souza and Emmanoel Leone de Carvalho Souza ... Majoring in Engineering.

UNIVERSIDADE DO ESTADO DA BAHIA: Attended the Universidade Do Estado Da Bahia in Salvador, Brazil ... Did not play soccer.

CLUB: Played club for São Francisco do Conde Futebol Clube ... Participated in the FIFA U17 Women's World Cup in New Zealand in 2008 and the FIFA U-20 Women's World Cup in Germany in 2010 ... Placed second in the U17 Chile South American championship 2008 ... Took first in the U20 Colombia South American Championship 2010 and finished first in the State Championship Bahia in 2007, 2008, 2009, 2010.



CAREER STATISTICS

Year	GP-GS	Goals	Assists	Points	Shots	GWG
2011	16-14	9	7	25	54	4
TOTAL	16-14	9	7	25	54	4



#16 MARY LOUISE CLAWSON

SOPHOMORE | 1L | MIDFIELD/FORWARD | 5-6
HOUSTON, TEXAS | HOUSTON CHRISTIAN HS

GAME HIGHS

Shots: 1 (vs. Jackson State, 8-28-11)

2011 (FRESHMAN SEASON): Played in six games during the year ... took one shot during the season against Jackson State.

HIGH SCHOOL: Attended Houston Christian High School in Houston, Texas ... Four-year varsity soccer player ... Earned several athletic honors in high school including being named to the All-State First Team (2009), the All-District First Team (2009, 2010), team MVP (2008) and was named to the NSCAA All-America Soccer team in 2009 ... Also participated in track and was a two-time State Champion in the 400m dash ... Named to the All-State team in track from 2008-10 ... Holds five school track records (100m, 200m 400m, 4x100m relay and the 4x400m relay) ... Named to the Principal's honor roll in 2008 and 2009.

ODP: Was a member of the Texas ODP Region III State Team in 2005, 2007 and 2009 ... Named to the Honorable Mention Regional Team in 2007.

CLUB TEAM: Played club for the Albion Hurricanes FC 93 Blue ... Led her team to a Division I State Championship in 2005 ... Played in the Premier League for four years.

PERSONAL: Born Dec. 21, 1992 ... Full name is Mary Louise Clawson ... Daughter of Mark and Laura Clawson ... Has spent time volunteering in programs that help underprivileged children ... Several family members have served in the U.S. Armed Forces ... Great Grandmother was 100 percent Native American ... Enjoys taking international trips, cooking and outdoor activities ... Majoring in Mechanical Engineering.



CAREER STATISTICS

Year	GP-GS	Goals	Assists	Points	Shots	GWG
2011	6-0	0	0	0	1	0
TOTAL	6-0	0	0	0	1	0



#1

KELLY McCORMICK

SOPHOMORE | 1L | GOALKEEPER | 5-7
LAGUNA NIGUEL, CALIF. | DANA HILLS HS

GAME HIGHS

Saves: 10 (at UAB, 9-17-11)

Minutes: 92 (two times)

Goals Allowed: 4 (two times)

2011 (FRESHMAN SEASON): Played in 12 games with nine starts ... Ended the year with three solo shutouts against Alabama, Vanderbilt and Mississippi State ... Recoded a team-best 61 saves ... Allowed 17 goals in 944:51 minutes played (1.62 GAA) ... Ended the season with a 5-5 record ... Made a career high 10 saves against UAB ... Recorded at least five saves in seven games during the season ... Ended the year fifth in the SEC in save percentage (.782), ninth in saves (61) and 10th in shutouts (3).

HIGH SCHOOL: Attended Dana Hills High School in Dana Point, Calif. ... Four-year varsity starter and a three-year team captain ... Earned numerous awards and honors including Rookie of the Year, Most Inspirational, All-League Team 2, MVP and All-League Team 1... Ran cross country as a freshman and sophomore ... Lettered in track and field in 2010 and was the league champion in the pole vault ... Is second on the all-time list for pole vaulting ... Earned numerous academic accolades including being named a four-year scholar athlete and a four-year member of the Principal's honor roll ... Graduated with Academic Distinction ... Earned a spot on the school's "Wall of Fame" for earning six varsity letters in two sports and two All-League titles.

CLUB: Played club for the highly-competitive So. Cal Blues ... Team was ranked as the No. 1 team by National Soccer Rankings, TopDrawer and GotSoccer ... Played for the So. Cal. Blues for nine years and led her team to five-consecutive Surf Cup Championships ...also led her team to a U.S. Youth U-17 National Championship in 2010, a U.S. Youth U-16

Bronze National Championship and a U.S. Youth U-15 Silver National Championship.

PERSONAL: Born Aug. 25, 1992 ... Full name is Kelly Heid McCormick ... Daughter of Robert and Charlotte McCormick ... Has two older siblings, Katelyn, who swam for Saint Louis University, and

Brandon ... Niece of past President of the Ole Miss Alumni Association (2007-08), David and Susan McCormick ... Has participated in numerous community service events including volunteering at a veterinary hospital, a mentorship program for the mentally challenged and a program for the homeless ... Majoring in Biology.



CAREER STATISTICS

Year	GP-GS	Minutes	GA	GaAvg	Saves	W	L	T	Sho.
2011	12-9	944:51	17	1.62	61	5	5	0	3
TOTAL	12-9	944:51	17	1.62	61	5	5	0	3



#19 VIRGINIA SEILER

SOPHOMORE | 1L | DEFENSE | 5-7
ATLANTA, GA. | THE LOVETT SCHOOL

2011 (FRESHMAN SEASON): Played in five games during her first year at Ole Miss ... Did not attempt a shot ... Played a career-high 24 minutes in Ole Miss' 8-0 win over Jackson State.

HIGH SCHOOL: Attended The Lovett School in Atlanta, Ga. ... Was a four-year starter ... Named Defensive MVP two times ... Team advanced to the State finals as a freshman and sophomore ... Served as a team captain in 2011 ... Named to the All-Area First Team and the All-Area Player of the Year ... Also earned First Team All-Region and Region Player of the Year accolades ... A ESPN RISE All-State All Star ... Garnered MVP honors in high school ... Was the second leading goal scorer for goals in a season with 29 while playing offense for the first time ... Member of the Scholar's List all four years ... Also a member of the National Honor Society.

CLUB: Played club for the Concorde Fire Elite ECNL ... Was a four-year team captain ... Club was a state finalist as a freshman, sophomore and senior ... Semi-finalist as a junior ... Advanced to regionals as the premier league team as a sophomore and senior.

PERSONAL: Born Sept. 3, 1992 ... Full name is Virginia Linton Seiler ... Daughter of John and June Seiler ... Majoring in Mathematics Education ... Dad played basketball at Vanderbilt ... Has three brothers: John was a four-year starter in football and Columbia where he served as captain and was named Offensive Line MPV; Stuart was a high school All-American in lacrosse and plays at the University of Georgia and William who is 11 years old ... Majoring in Mathematics Education.



CAREER STATISTICS

Year	GP-GS	Goals	Assists	Points	Shots	GWG
2011	5-0	0	0	0	0	0
TOTAL	5-0	0	0	0	0	0



#28 MARGARET THOMAS

SOPHOMORE | 1L | DEFENSE | 5-6
BENTON, KY. | MARSHALL COUNTY HS

GAME HIGHS

Shots: 1 (vs. The Citadel, 9-12-11)

2011 (FRESHMAN SEASON): Saw playing time in five games as a freshman ... Took one shot on the year in Ole Miss' 6-1 win over The Citadel ... Played a career-high 15 minutes in the Rebels' game at Georgia.

in numerous community service events including Walks for MS, St. Jude Children's Hospital annual fundraisers and the Gunning for Gunner Foundation for Pediatric brain cancer ... Enrolled in the college of Liberal Arts.

HIGH SCHOOL: Attended Marshall County High School in Benton, Ky. ... Was a three-time All-District Team honoree and a two-time First Team All-State selection ... Ended her career second all-time in Marshall Country school history in goals scored (118), second for goals in a season (36) ... Is the all-time leader in assists (34) and is the career leader in assists in a season (17) ... Led her team to a Region I runner up finish in 2010 and a sectional runner-up finish in 2009 ... Also played basketball and was a team captain from 2009-11 and was named to the All-District and All-Region for basketball in 2007 ... Involved in several activities in high school including serving as Student Government Vice President, a class representative, Marshall Militia Pep Club Secretary.

CLUB: Played club for Marshall County Lady Marshals.

ODP: Was a member of the Kentucky Region II State ODP team from 2004-06.

PERSONAL: Born July 5, 1992 ... Full name is Margaret Elizabeth Thomas ... Daughter of Jeff and Susan Thomas ... Enjoys the outdoors and activities such as bow hunting and fishing ... Likes to travel and has been to Mexico, the Bahamas and Jamaica ... Has two older sisters, Anna, who attends LSU, and Olivia, who attends Kentucky ... Participated



CAREER STATISTICS

Year	GP-GS	Goals	Assists	Points	Shots	GWG
2011	5-0	0	0	0	1	0
TOTAL	5-0	0	0	0	1	0

#7

BETHANY BUNKER

FRESHMAN | HS | FORWARD | 5-8
MEMPHIS, TENN. | ST. AGNES ACADEMY



HIGH SCHOOL: Attended St. Agnes Academy in Memphis, Tenn. ... ESPN Rise Top Girls' Soccer Player List (2009-10) ... NSCAA All-South Team (2011)... Gatorade Player of the Year Nominee (2009, 2011) ... Tennessee High School Coaches Association All-State Team (2009-11) ... St. Agnes High School Team Offensive Player of the Year (2008-10) ... Commercial Appeal Best of the Preps All-Metro Soccer Team (2008-11) ... Tennessee Sports Writer's Association All-State Girls Soccer Team (2009-11) ... Commercial Appeal Best of the Preps Finalist (2009-11)

... Tennessee Division II/West Region All-Tournament Team (2008-11) ... Tennessee DII/AA State Finalists (2010, 2011) ... Tennessee DII/AA West Region Champions (2009-11) ... Also ran track ... St. Agnes Academy record holder in the 100m, 200m, 4x100m relay and 4x200m relay ... Commercial Appeal's Best of the Preps All-Metro Track Team (2009) ... National Honor Society (2011-12) ... National English Honor Society (2010-11) ... National Latin Honor Society (2010-11) ... Dean's List Magna Cum Laude (2008-10) ... Dean's List Summa Cum Laude (2010-2011) ... Volunteered with the Salvation Army, St. Ann Special Olympics, TOP Soccer, St. Vincent de Paul Soup Kitchen, Mann House, Lisa Lass Annual 5K Race and Fayette Cares.

CLUB: Played club for the Collierville Lady Lobos ... Tennessee State Finalists (2010, 2011) ... Region III Premier League Champions.

PERSONAL: Born December 30, 1993 ... Daughter of Ray and Kathy Bunker ... Played soccer in Italy in 2008 with the Mid-South Futbol Club ... Pre-Pharmacy Major.

#14

SARA COLEMAN

FRESHMAN | FORWARD | 5-4
LAUREL, MISS. | WEST JONES HS



HIGH SCHOOL: Attended West Jones High School in Laurel, Miss. ... Mississippi Gatorade Player of the Year (2012) ... First Team All-District (2007-12) ... Second Team All-State (2007-08) ... First Team All-State (2008-12) ... District Player of the Year (2009, 2010) ... Gatorade Player of the Year Nominee (2009, 2010) ... Five-time team captain ... State Champion (2009, 2011) ... State Runner up (2010) ... Career stats: 154 goals, 105 assists ... Also ran track ... Third place at State in the 400m (2008) ... First place at State in the 4x200m relay (2008) ... Student Council (2009-12) ... Sophomore, Junior President ... Student Advisor Board (2011, 2012) ... Senior Secretary ... FCA (2009-12) ... Spanish Club (2009-12) ... Alpha Team (2012) ... Logged 279 community service hours for math tutoring.

... Sophomore, Junior President ... Student Advisor Board (2011, 2012) ... Senior Secretary ... FCA (2009-12) ... Spanish Club (2009-12) ... Alpha Team (2012) ... Logged 279 community service hours for math tutoring.

ODP: Five years on the Mississippi Team ... Four years on the Region III Team ... Thanksgiving Regional Event ... Costa Rica with the Region III Team ... National Team Camp.

CLUB: Played club for the North Atlantic Soccer Association ... Won Regionals (2011) ... Placed third at Nationals (2011) ... Won a National League Title (2010) ... State Champion (2010) ... Placed second at State (2011).

PERSONAL: Born December 1, 1993 ... Daughter of Jerry and Marie Coleman ... Both parents were members of the track team at Southern Miss from 1985-89 ... Majoring in Elementary Education.

#9

SYDNEY EDDY

FRESHMAN | MIDFIELD/FORWARD | 5-6
FRANKLIN, TENN. | BATTLE GROUND ACADEMY



HIGH SCHOOL: Attended Battle Ground Academy in Franklin, Tenn. ... Started 71 games and played in 73 ... Recorded 44 goals and 29 assists ... All Mid-State as a junior and senior ... All-Region as a junior and senior ... First Team All-State as a senior ... Team captain as a senior ... All-Star team as a senior ... Placed third at State (2010, 2011) ... Finished the 2011 season 12-4-2 ... National Honors Society ... Mu Alpha Theta (math) ... AP English ... Community service activities include a mission trip, nursing home and Habitat for Humanity.

ODP: Tennessee State Team (2009-10).

CLUB: BWSC Girls '93 Premier ... Six-time Tennessee State Champions ... Three-time Premier League Champions

PERSONAL: Born July 13, 1993 ... Daughter of Steve and Tracy Eddy ... Majoring in Business.

#6

MADDIE FRIEDMANN

FRESHMAN | DEFENSE/MIDFIELD | 5-6
ST. LOUIS, MO. | URSULINE ACADEMY



HIGH SCHOOL: Attended Ursuline Academy in St. Louis, Mo. ... NSCAA All-America Team (2011) ... Missouri State Defender of the Year (2011) ... First Team All-Region (2011) ... First Team All-State (2011) ... First Team All-Metro (2011) ... First Team All-Conference (2011) ... Team Captain (2010, 2011) ... Selected by the St. Louis Soccer Hall of Fame for receive the "Future Soccer Stars" award (2011) ... Team finished second in the state of Missouri (2011) ... First Team All-Conference (2010) ... Ursuline Academy MVP (2010) ... Also played field hockey ... First Team All-Conference (2010, 2011) ... Second Team All-Metro (2010, 2011) ... Ursuline Academy Team Captain and MVP ... Ursuline Academy Academic Excellence Award, 4.0 GPA (2009-present) ... Excellence in Art Award (2011) ... Volunteers with St. Louis Crisis Nursery, Kolping Kicks U15 girls soccer team.

CLUB: Played club for Kolping Kicks ... National League Champions (2011) ... Second place U.S. Soccer Nationals (2011) ... Missouri State Champions (2007, 2009, 2010, 2011) ... Midwest Regional League Division Champions ... ECNL All-Tournament Team ... Currently ranked eighth in the Region by Top Drawer Soccer

PERSONAL: Born November 15, 1993 ... Daughter of Sheri and Kevin Kersting and Robert Friedmann ... Enrolled in the College of Liberal Arts.

#20

OLIVIA HARRISON

FRESHMAN | MIDFIELD/FORWARD | 5-8
COLLIERVILLE, TENN. | HOUSTON HS



HIGH SCHOOL: Attended Houston High School in Collierville, Tenn. ... Tennessee Gatorade Player of the Year (2012) ... NSCAA All-American (2010, 2011) ... NSCAA All-South (2009-2011) ... ESPN Rise All-South Team (2010) ... ESPN Rise National Player of the Week (Nov. 2010)... NSCAA Tennessee Player of the Year (2010, 2011) ... ESPN Rise Top-10 Player in Tennessee (2009, 2010) ... Tennessee Coaches Association All-State (2008-11) ... Tennessee Sports Writers' All-State (2008-11) ... THSSCA All Star "East-West" Team (2011) ... Overall

Champion Pepsi/Commercial Appeal Best of the Preps (2009 & 2010) ... Pepsi/Commercial Appeal Best of Preps - Top Five Finalist (2008-11) ... Voted MVP of the TSSAA High School D-1 AAA State Tournament (2009-10) ... 106 career goals and 67 career assists with a 73-10-8 record at Houston High School ... Tennessee High School D-1 AAA State Champions (2009-10) ... Semifinalist (2011) and Quarterfinalists (2008) ... Ranked in ESPN "Fab 50" all four years and as high as fifth in the nation (2010) ... Also ran track and cross country ... Anchor leg of Tennessee D-1 AAA State Championship team in 4x800m relay ... Placed second in Tennessee D-1 AAA State Championships in 800m (2:18:74) ... Selected to Pepsi/Commercial Appeal Best of Preps in Girls Track (2009-10) ... Holds the Houston High School record in the 800m (2:18:74) ... Top female finisher in the Shelby County (Tennessee) Cross Country Championships (19:27) ... Honor Roll ... AP student ... Involved in TOPSoccer (special needs players) and Collierville Animal Shelter.

ODP: National ODP (2008, 2010) ... International ODP Roster, Costa Rica Tournament (March 2009) ... Coral Springs (2008) ... National Development Camp, Pomona, Calif. (2009, 2011).

CLUB: Played club for 94 Lady LOBOS Blue ... Topdrawersoccer's Top 10 Player to Watch (fourth in South region) ... Topdrawersoccer's National Player of the Month (June 2011) ... Third leading overall scorer (U17 Girls) at 2011 USYS Southern Regionals ... Region III Premier League-Central Champions (2011) ... USYS Southern Regionals Quarterfinalists (2011) ... Tennessee State Finalists (2008, 2010, 2011) ... Ranked as high as second in the nation (SoccerinCollege) and seventh in the nation (Gotsoccer) ... 2011 Disney U17G Champions... 2010 CASL Champions.

PERSONAL: Born July 20, 1994 ... Daughter of Carter and Patricia Harrison ... Majoring in Biology.

#15

JESSICA HISKEY

FRESHMAN | DEFENSE | 5-4
FRANKLIN, TENN. | FRANKLIN HS



HIGH SCHOOL: Attended Franklin High School in Franklin, Tenn. ... Co-Captain of 2011 Tennessee State Champions (24-0-0; ranked first in nation by NSCAA; second in nation by ESPN) ... Tennessee State Finalists (2009, 2010) ... Adidas High School All-America (2011) ... Two-time District 11-AAA Player of the Year (2010, 2011) ... Four-year varsity starter ... Three-year All-District, All-Region, All-State team (2009-2011) ... Honor Roll ... Fellowship of Christian Athletes ... National Honors Society ... Habitat for Humanity.

ODP: Region III ODP Team (2011) ... Boca Thanksgiving Interregional (2011) ... Tennessee ODP Team (2008-11).

CLUB: Played club for BWSC 94 Premier ... Region III Finalists (2011) ... Region III Semifinalists (2010) ... Region III Quarterfinalists (2008, 2009) ... National League (2010-11) ... Three-time State Champions (2009-2011) ... Captain (2007-2012).

PERSONAL: Born May 14, 1994 ... Daughter of Lynn and Jon Hiskey ... Has lived in Pennsylvania, Mexico, California and Tennessee ... Majoring in Exercise Science.

#22

JENNIFER MILLER

FRESHMAN | MIDFIELD | 5-1
ST. LOUIS, MO. | CO JESU ACADEMY



HIGH SCHOOL: Attended Cor Jesu Academy in St. Louis, Mo. ... As a team, finished third at State (2009-10) ... Named First Team All-Conference (2009-10 and 2010-11) ... Team MVP (2010-11) ... Also played field hockey ... As a team, lost in the semifinals of the state playoffs (2009-10) ... Placed second at State (2011-12) ... Team captain on this past year's team ... Second Team All-Conference (2010-2011)... First Team All-Conference (2011-2012) ... The Post-Dispatch First Team All-Metro (2011-2012) ... Team MVP (2011-2012) ... Made High

Honors for every semester of high school, (minimum of a 3.75 GPA) ... A member of the National Honor Society, (minimum of a 3.5 GPA and 10 hours of service per semester) ... Serves at Ranken Jordan Pediatric Specialty Hospital and SPENSA (special needs soccer).

ODP: Missouri State Team (2006) ... Invited to and attended the U.S. Soccer id2 Program (2007).

CLUB: Kolping Saint Louis/St. Louis Scott Gallagher ... Played for Saint Louis Scott Gallagher for nine years and then switched clubs this year to become Kolping Saint Louis ...Team captain for the last four years ... Missouri State Champions (2007, 2009, 2010, 2011) ... National League Champions (2010-11) ... National finalist U.S. Youth Soccer National Championships (2010-2011).

PERSONAL: Born August 19, 1993 ... Daughter of Pat and Joan Miller ... Has four siblings ... Majoring in Biology.

#5

GEORGIA RUSSELL

FRESHMAN | DEFENSE | 5-8
TUPELO, MISS. | TUPELO HS



Spring 2012: Enrolled in classes at Ole Miss and attended spring practice with the team.

HIGH SCHOOL: Attended Tupelo High School in Tupelo, Miss ... Started every game during her high school career ... Recorded 68 goals and 24 assists ... Helped Tupelo to a 64-14-4 record over her four seasons and earned several accolades including being named to the All-State First Team, the Northeast Mississippi Daily Journal Player of the Year and two-time team MVP ... Three-year member of Tupelo's track team and was a three-time

finalist in the class 6A 300m hurdles ... As a junior, she broke the school record in the 300m hurdles, which stood for 15 years, with a time of 46.35 ... Five-time Rotary Scholar, an ACT Scholar and a member of the National Honor Society ... Graduated early from high school with a 4.0 GPA and was fifth in her class of 514.

ODP: Mississippi ODP program (2006-08).

CLUB: Played club soccer for Tupelo FC, Fire and most recently Birmingham United SA ... Led the team in goals and points for the past two years.

PERSONAL: Born January 25, 1994 ... Daughter of Bo and Noel Russell ... Her father, Bo, was an All-SEC Defensive Back in 1989 at Mississippi State and is a 1993 graduate of the Ole Miss Law School ... She is the fourth generation in her family to attend Ole Miss but the first to do so as an undergraduate ... Enrolled in the college of Liberal Arts.

#2

SAMANTHA SANDERS

FRESHMAN | DEFENSE | 5-8
WEST ALLIS, WIS. | NATHAN HILL



HIGH SCHOOL: All Conference Player (2009-2011) ... Metro-Milwaukee Player (2011) ... Honor Roll (2008-2012) ... Church community project, working at the food pantry ... Coached kindergarteners and first graders on the weekends.

CLUB: Played club for FC Milwaukee (2009 - Present) and Challenge 94 (2004 - 2008) ... State Champions, FC Milwaukee (2008, 2009, 2010, 2011) ... State Champions, Challenge 94 (2006, 2007, 2008) ... Region 2 Semi-Finalists (2010-2011) ... Madison

I.D. Camp (2011).

ODP: STYSA ODP (2007-08).

PERSONAL: Born September 7, 1994 ... Daughter of Karen Ciezki and Mike Sanders ... Sister played soccer at Troy University ... Has lived in Texas and Wisconsin ... Enrolled in the College of Liberal Arts.

#31

BRIANNA SUPULSKI

JUNIOR | GOALKEEPER | 6-0
CARROLTON, TEXAS | INDIANA STATE | HEBRON HS



INDIANA STATE (2010-11): Played two seasons at Indiana State ... In 2011, started four games for the Sycamores, while also making one appearance off the bench ... Tallied 14 saves and a .778 save percentage ... Allowed one goal in each of her four starts, finishing the season with a 0.99 goals against average ... In 2010, started two matches in goal, playing 45 minutes in each game ... made five saves over her 90 minutes played, including four in the season opener against Western Michigan ... Was a three-time Dean's List selection, a three-time AD Honor Roll member and a three-time Missouri Valley Conference Academic Honor Roll honoree.

HIGH SCHOOL: Three year starter on the Hebron High School team that reached a No. 1 national ranking in 2008 and 2009 ... Led Hebron to District 6-5A championships in 2008 and 2009 ... Selected as a 2009 and 2010 Texas District 6-5A First Team Goalkeeper.

CLUB: Led her club team, Dallas Texans '92 Red, to a North Texas State Cup, Region III and National Championships, in the summer of 2011 ... Played club soccer with Solar '92, where she competed in the Division I Lake Highlands Girl's Classic League, Region III Premier League and Red Bull National League.

ODP: Member of the North Texas State Pool from 2008-10 ... Attended Region III Camp in Birmingham, Ala., in 2008 ... Member of the North Texas State Team in 2009.

PERSONAL: Born February 16, 1992 ... Daughter of Jeff and Linda Supulski ... Majoring in Business.

#10

BROOKE THEOBALD

FRESHMAN | DEFENSE | 5-7
MARIETTA, GA. | WALTON HS



UNITED STATES SOCCER FEDERATION EVENTS: United States Soccer Federation U.S. Soccer January Training Center Atlanta, Ga. (2011) ... United States Soccer Federation U.S. Soccer April Training Center Atlanta, Ga. (2011) ... United States Soccer Federation U.S. Soccer August Training Center Atlanta, Ga. (2011).

HIGH SCHOOL: Attended Walton High School in Marietta, Ga. ... Led Walton to the GHSA AAAAA Girls Soccer State Semi Finals (2009-11) ... All-Cobb County First Team (2011) ...

Walton High School Varsity Midfielder of the Year (2011) ... GHSA AAAAA State Tournament Final Four (2011) ... Walton High School Varsity Midfielder of the Year (2010) ... GHSA AAAAA State Tournament Final Four (2010) ... Walton High School Varsity Rookie of the Year (2009) ... GHSA AAAAA State Tournament Final Four (2009) ... Volunteered at the Atria Assisted Living Home (2011) ... Walton High School Female Physical Education Award (2010) ... NASA Little Kickers Volunteer (2010) ... FCA (2008-11) ... NASA TOPSoccer Coach (2006-09) ... Young Life (2005-11).

ODP: '94 ODP National Camp Coral Springs, Fla. - Invitee (2010) ... '94 ODP Girls Thanksgiving Interregional Coral Springs, Fla. - Invitee (2009) ... '94 ODP International Tournament Costa Rica (2009) ... '94 ODP National Camp Pomona, Calif. (2009) ... '94 ODP Region III Pool (2009) ... '94 Georgia ODP (2009) ... '94 ODP Girls Thanksgiving Interregional Coral Springs, Fla. (2008) ... '94 ODP Region III Pool (2008) ... '94 Georgia ODP (2008) ... '94 ODP Sub Region Camp Coaches Choice Selection (2007) ... '94 Georgia ODP (2007) ... '94 Georgia ODP.

CLUB: Played club for North Atlanta Soccer Association (NASA) ... USYSA National Championships Third Place, Phoenix, Ariz. (2011) ... USYSA Southern Regional Champion (2011) ... USYSA National League Second Place (2011) ... Region III Premier League East Champion (2011) ... USYSA National Championships Overland Park, Kan. (2010) ... USYSA National League Champion (2010) ... Scored the game winning goal for NASA on an unassisted corner kick to win the USYSA National League Championship to send her team to the 2010 USYSA National Championships in Overland Park, Kan. ... Georgia State Cup Champion (2010) ... USYSA Southern Regional Finalist (2009) ... USYSA Southern Regional Quarterfinalist (2008) ... Region III Premier League East Champion (2008) ... CASL Champion (2008) ... Georgia State Cup Champion (2007) ... 2007 WAGS Cup Flight Champion (2007) ... CASL Champion (2006).

PERSONAL: Born May 21, 1994 ... Daughter of David and Kellie Theobald ... Brother, Braden, played collegiate football at Brevard College ... Mother, Kellie, played softball and was a cheerleader at Bryan College in Dayton, Tenn. ... Father, David, played baseball at Southwestern University in Georgetown, Texas ... Majoring in Exercise Science.

#0

EMILY WILBER

FRESHMAN | GOALKEEPER | 5-6
SONOMA, CALIF. | SONOMA HS



HIGH SCHOOL: Attended Sonoma Valley High School in Sonoma, Calif. ... Four-year starting goalkeeper... Four-year team MVP ... Two-year varsity team captain ... Senior year Team Captain Award ... Two-time All-League First Team ... One-time All-League Second Team ... CSF Life-Long Member ... Member of Earth Club and Interact Club ... Campaign manager for winning student government officers ... CEO of Virtual Enterprise class ... Senior class top nine percent (300 students).

CLUB: Played club for Sonoma County Alliance 94G ... U.S. Club State Cup finalists, second place (2010) ... Mustang Tournament Champions (2010).

PERSONAL: Born October 18, 1994 ... Daughter of Jeff and Donna Wilber ... Mother, Donna, was born and raised in Mississippi ... Grandparents, Joe and Virginia, are from Columbus, Miss. ... Majoring in Accountancy.

POSTSEASON TOURNAMENTS

NCAA CHAMPIONSHIPS

Ole Miss will have its sights set on a fifth trip to the "Big Dance" in 2012. The Rebels previously made NCAA Tournament appearances in 2002, 2003, 2005 and 2009.



2012 NCAA Women's Soccer Championships

Nov. 10 - Dec. 2

Women's College Cup: San Diego, Calif. (Nov 30 & Dec. 2)



REBELS IN THE NCAA TOURNAMENT				
YEAR	HOST	ROUND	RESULTS (1-3)	UM GOALS
2002	Florida State	First	Florida St. 2, UM 0	_____
2003	Florida	First	UM 1, Texas 0	Megan Mattei (Amy Sample)
		Second	Florida 4, UM 3 (2OT)	Hillary Beckman (unassisted) Karen Hall (Brittney Potts) Brittney Potts (unassisted)
2005	Vanderbilt	First	Pepperdine 1, UM 0	_____
2009	Portland	First	Washington 1, UM 0	_____



SOUTHEASTERN CONFERENCE TOURNAMENT

Entering the 2012 season, Ole Miss has appeared in 13 of the last 15 SEC Tournaments, including 13 straight from 1997-2009. The only league school to appear in more during that span is Florida who has appeared in each of the last 15 SEC Tournaments. The Rebels have made four semifinals appearances and played in the 1999 championship match against the Gators.



The top eight teams in the final regular-season standings advance to the tournament. The tournament's winner is granted an automatic bid into the NCAA Tournament.

The SEC has hosted a postseason tournament every year since 1993. It returns for a ninth time to the Orange Beach Soccer Complex in Orange Beach, Ala., in 2012.

2012 SEC Soccer Tournament

October 29 - November 4, 2012

Orange Beach Soccer Complex (Orange Beach, Ala.)

Media Relations Contact: Craig Pinkerton

Pinkerton phone: 205-458-3010

Pinkerton email: cpinkerton@sec.org

Web site: www.secsports.com

REBELS IN THE NCAA TOURNAMENT			
YEAR	SEED	ROUND	RESULTS (5-12)
1997	West 3	First	UF 6, UM 0
1998	West 2	First	UK 4, UM 1
1999	2	First	UM 1, UT 0
		Semis	UM 1, UG 0
		Final	UF, 3, UM 0
2000	2	First	UG 2, UM 0
2001	7	First	UM 2, MS 1
		Semis	AU 2, UM 1
2002	3	First	UK 2, UM 1
2003	4	First	UM 2, UK 1
		Semis	UT 2, UM 0
2004	7	First	UM 3, AU 0
		Semis	UF 3, UM 0
2005	2	First	UK 3, UM 2 (OT)
2006	7	First	UK 3, UM 2
2007	7	First	UG 2, UM 0
2008	7	First	LS 2, UM 1
2009	3	First	AU 2, UM 1



MAGNOLIA CUP

Ole Miss and Mississippi State form a geographical and conference rivalry in every sport. The two soccer programs have further enhanced the rivalry with the Magnolia Cup, which has been given to the winner of each match the Rebels and Bulldogs have played since 2003. The traveling trophy is up for grabs at each meeting, whether during the fall or the exhibition season in the spring.

Ole Miss has controlled the series in recent years, leading the all-time series 10-2-2 and are 9-1 in their last 10 meetings against the Bulldogs and Ole Miss has outscored Mississippi State, 24-3 in those nine meetings. Most recently, Ole Miss secured a 2-0 win at home during the 2012 regular season.

In the inaugural battle for the Magnolia Cup on April 4, 2003, the Rebels took control of the prize with a 1-0 victory over the Bulldogs, off a Kelly Renie goal, in the first ever night game at MSU Soccer Field. Ole Miss maintained the Cup in fall 2003, and State captured the trophy for the first time in 2004 with a narrow 1-0 win in Starkville. After a draw in 2005, the Rebels regained the Cup with an impressive 2-0 victory in Starkville in 2006. The Rebels currently are in possession of the Magnolia Cup after a 2-0 win in October to end the 2011 regular season.



MAGNOLIA CUP RESULTS		
DATE	RESULT	SITE
4/4/03	UM 1, MSU 0	Starkville
10/31/03	UM 0, MSU 0 (2OT)	Oxford
10/29/04	MSU 1, UM 0	Starkville
10/28/05	UM 1, MSU 1 (2OT)	Oxford
10/27/06	UM 2, MSU 0	Starkville
11/2/07	UM 1, MSU 0	Oxford
3/22/08	UM 6, MSU 0	Ridgeland
10/31/08	UM 3, MSU 1	Starkville
4/16/09	UM 3, MSU 0	Ridgeland
10/30/09	UM 2, MSU 0	Oxford
3/31/10	UM 2, MSU 0	Ridgeland
10/29/10	UM 1, MSU 2	Starkville
3/26/11	UM 2, MSU 0	Ridgeland
10/28/11	UM 2, MSU 0	Oxford
Ole Miss leads 10-2-2		

2011 NEWS AND HIGHLIGHTS

SOCCER RUNS THROUGH SPRING GAMES UNDEFEATED

Ole Miss ended its spring season with an undefeated record of 5-0-1. Ole Miss went 3-0-1 at home and 2-0 on the road including a 2-1 victory at local rival Memphis.

- April 21: UAB, W 4-1 (Sinovich, Russell, McCalla, McCalla)
- April 14: Georgia State T, 2-2 (Duff, Rafaele)
- April 10: at Memphis, W 2-1 (Rafaele, Snow)
- March 31: Lee, W 2-1 (Emerson, Emerson)
- March 31: Samford, W 1-0 (McCalla)
- March 3: at St. Louis W 2-0 (Rafaele, McCalla)

SOCCER TRIO EARN ALL-SEC HONORS

Seniors Meredith Snow and Dylan Jordan and junior Alix Hildal were each named to the Second Team All-SEC, the conference announced on October 31. It was the second career SEC honor for Hildal and the first for both Jordan and Snow.

TEAM, HILDAL EARN HONORS FROM NSCAA

As a team, the Rebels posted a GPA above 3.0 for the fall semester to earn the NSCAA Team Academic Award for the 2010-11 academic year. Ole Miss recorded a 3.10 GPA under head coach Matt Mott. Individually, Hildal was named to the 2011 NCAA Women's Division I All-South Third Team.

JORDAN NAMED ACADEMIC ALL-AMERICAN

Senior Dylan Jordan was named a Capital One Third Team Academic All-American by CoSIDA, the organization announced in December. Jordan, who was named



As a sophomore, Rafaele Souza led the team in points (25), goals (nine) and assists (seven). She also recorded four game-winning goals.

to the Academic District 6 All-District team in November, earned Academic All-America honors for the first time in her career. Jordan is Ole Miss' first CoSIDA Academic All-American since 2004.

RONALDI NAMED TO SEC COMMUNITY SERVICE TEAM

Senior goalkeeper Alley Ronaldi was named to the 2011 SEC Soccer Community Service Team.

During her career at Ole Miss, Ronaldi participated in Reading with the Rebels, and the Leap Frog Mentorship Program.

JENNA STROTHER NAMED WHO'S WHO

Jenna Strother was one of 10 Rebel student-athletes among the 154 Ole Miss students selected to the 2011-12 Who's Who Among Students in American Universities and Colleges for the University of Mississippi.

SOCCER KEEPS MAGNOLIA CUP

Mandy McCalla scored twice as Ole Miss beat Mississippi State, 2-0, to win the Magnolia Cup on October 28.

JORDAN RECORDS FIRST CAREER HAT TRICK

Dylan Jordan recorded three goals in Ole Miss' 4-3 loss at Tennessee on October 7. It was the first hat trick by an Ole Miss player since Alix Hildal recorded three goals in a 3-2 win at Vanderbilt on October 24, 2010.

SOUZA LEADS TEAM OFFENSIVELY

Newcomer Rafaele Souza led Ole Miss in points (25), goals (nine) and points (seven) on the year. She finished the season one point, one goal and one assist away from breaking into Ole Miss' top-10 record book for each category.

NO GOALS ALLOWED

The Rebels did not allow a goal in the first 455 minutes of the season. That streak is a program record for the longest an Ole Miss team has held an opponent scoreless at any point in a season. Prior to this year, the longest a Rebel team held an opponent scoreless was 450 minutes in 2009.

RONALDI NAMED SEC DEFENSIVE PLAYER OF THE WEEK

Senior goalkeeper Alley Ronaldi was named SEC Defensive Player of the Week on August 29 after helping lead Ole Miss to a pair of wins over the weekend. Ronaldi posted a shutout in a 1-0 win at Texas Tech and made two saves in an 8-0 win over Jackson State.

SNOW NAMED SEC DEFENSIVE PLAYER OF THE WEEK

Senior defender Meredith Snow was named SEC Defensive Player of the Week on October 24 after scoring a goal, helping Ole Miss to a shutout against Vanderbilt and leading the Rebels to a 2-0 record the week of

October 17

SNOW ENDS CAREER FIFTH ALL-TIME IN STARTS

Senior defender Meredith Snow ended her career starting all 80 games for Ole Miss. She is fifth all-time for the Rebels in games started.



Alix Hildal was named to the All-SEC Second Team for the second consecutive year in 2011.

SEASON BREAKDOWN

Overall	8-10-1
SEC	4-7
Home	6-3
Away	2-6
Neutral	0-1-1
Day	3-4
Night	5-6-1
One-Goal	2-5
Overtime	1-1-1

TEAM HIGHS

Goals/Game	8, vs. Jackson State
Assists/Game	5, two times
Points/Game	21, vs. Jackson State
Shots/Game	26, vs. Jackson State
Corner kicks/Game	14, vs. The Citadel

INDIVIDUAL HIGHS

Goals/Game	3, Dylan Jordan at Tennessee
Assists/Game	2, two times
Points/Game	6, Dylan Jordan at Tennessee
Shots/Game	8, Mandy McCalla vs. vs. MSU
Saves/Game	10, Kelly McCromick at UAB

2011 STATISTICS

2011 Ole Miss Soccer
Ole Miss Combined Team Statistics (as of May 04, 2012)
All games

RECORD:	OVERALL	HOME	AWAY	NEUTRAL
ALL GAMES	8-10-1	6-3	2-6	0-1-1
CONFERENCE	4-7	3-3	1-4	0-0
NON-CONFERENCE	4-3-1	3-0	1-2	0-1-1

Date	Opponent	Score	Att.	##	Player	gp	g	a	pts	sh	sh%	sogsog%	gw	pk-att
Aug 19	SOUTHERN MISS	w 2-0	517	6	Rafaelle Souza	16	9	7	25	54	.16	28 .51	4	0-0
Aug 26	at Texas Tech	w 1-0	1054	8	Dylan Jordan	19	8	2	18	28	.28	16 .57	1	0-0
Aug 28	JACKSON STATE	w 8-0	489	21	Mandy McCalla	19	5	4	14	44	.11	20 .45	1	0-0
Sep 02	vs Wright State	To2 0-0	1896	4	Alix Hildal	19	4	3	11	35	.11	15 .42	1	0-0
Sep 04	vs DUKE	L 0-1	527	3	Erin Emerson	19	2	4	8	30	.06	13 .43	0	0-0
Sep 09	at #16 Memphis	L 0-3	980	7	Jenna Strother	19	3	1	7	10	.30	5 .50	0	0-0
Sep 12	THE CITADEL	w 6-1	232	11	Emily Reid	19	2	2	6	21	.09	8 .38	1	0-0
Sep 17	at UAB	L 2-4	309	2	Meredith Snow	19	2	0	4	11	.18	4 .36	0	0-0
* 9/23/11	at ARKANSAS	Lot 1-2	912	22	Kendyl Mygatt	19	0	3	3	3	.00	1 .33	0	0-0
* Sep 25	at LSU	L 2-3	775	17	Maddie Cunningha	19	1	0	2	2	.50	2 1.00	0	0-0
* Sep 30	AUBURN	L 2-3	1057	12	Meghan O'Rourke	12	1	0	2	2	.50	1 .50	0	0-0
* Oct 02	ALABAMA	w 3-0	894	14	Abbie Curran	19	0	0	0	3	.00	2 .66	0	0-0
* Oct 07	at #20 Tennessee	Lot 3-4	1215	13	Emily Sinovich	18	0	0	0	2	.00	0 .00	0	0-0
* Oct 09	at Georgia	L 0-3	1378	28	Margaret Thomas	5	0	0	0	1	.00	0 .00	0	0-0
* Oct 14	FLORIDA	L 0-2	1132	25	Chelsea Heimann	18	0	0	0	1	.00	1 1.00	0	0-0
* Oct 16	SOUTH CAROLINA	L 0-3	867	16	Mary Louise Clawso	6	0	0	0	1	.00	1 1.00	0	0-0
* Oct 20	VANDERBILT	w 3-0	354	26	Kim Duff	8	0	0	0	0	.00	0 .00	0	0-0
* Oct 23	at Kentucky	Wot 2-1	603	19	Virginia Seiler	5	0	0	0	0	.00	0 .00	0	0-0
* Oct 28	MISSISSIPPI STATE	w 2-0	1212	15	Kelsey Breathitt	1	0	0	0	0	.00	0 .00	0	0-0
				1	Alley Ronaldi	11	0	0	0	0	.00	0 .00	0	0-0
				0	Kelly McCormick	12	0	0	0	0	.00	0 .00	0	0-0
TEAM STATISTICS	UM	OPP												
SHOT STATISTICS														
Goals-Shot attempts	37-248	30-290												
Goals scored per game	1.95	1.58												
Shot pct.	.149	.103												
Shots on goal-Attempts	117-248	134-290												
SOG pct.	.472	.462												
Shots/Game	13.1	15.3												
CORNER KICKS	93	94												
PENALTY KICKS	0-0	1-2												
PENALTIES														
Yellow cards	7	6												
Red cards	0	0												
ATTENDANCE														
Total	6754	7226												
Dates/Avg Per Date	9/750	8/903												
Neutral Site #/Avg	2/1212													

##	Goalie	GP	Min.	GA	GAAvg	Save	Pct	W-L-T	Sho
1	Alley Ronaldi	11	790:52	13	1.48	42	.764	3-5-1	2
0	Kelly McCormick	12	944:51	17	1.62	61	.782	5-5-0	3
	Total	19	1735:43	30	1.56	104	.776	8-10-1	7
	Opponents	19	1735:43	37	1.92	80	.684	10-8-1	6

Goals by Period	1st	2nd	OT	OT2	Total
Ole Miss	15	21	1	0	37
Opponents	12	16	2	0	30

Shots by Period	1st	2nd	OT	OT2	Total
Ole Miss	125	120	3	0	248
Opponents	139	143	6	2	290

Saves by Period	1st	2nd	OT	OT2	Total
Ole Miss	52	47	3	2	104
Opponents	45	34	1	0	80

Corners by Period	1st	2nd	OT	OT2	Total
Ole Miss	35	58	0	0	93
Opponents	39	54	1	0	94

Fouls by Period	1st	2nd	OT	OT2	Total
Ole Miss	72	84	2	4	162
Opponents	81	83	3	1	168

2011 SEC REVIEW



SETTING THE STANDARD FOR COLLEGIATE SOCCER

The 2011 women's soccer season reaffirmed the SEC's prominence in the country. A record eight teams from the SEC were invited to the NCAA Tournament. Alabama, Auburn, Florida, Georgia, Kentucky, LSU, South Carolina and Tennessee all made the 64-team field. The eight teams combined for a record of 4-7-1 with Auburn, Florida, Georgia and South Carolina advancing to the second round. The SEC now has a 55-67-11 (.455) NCAA Tournament record in 73 appearances.

In 2011, the SEC boasted ...

- Four NSCAA Scholar All-Americans
- 11 programs earning NSCAA/adidas College Team Academic Awards
- Four All-Americans
- 20 student-athletes on the NSCAA All-Region teams
- One Soccer America Freshman All-American
- A record eight teams advancing to the NCAA Championships
- At least three teams advancing to the postseason for the 14th time in the past 15 seasons
- 13 Capital One Academic All-District picks
- Five Top Drawer National Team of the Season members and three Top Drawer All-Rookie Team selection.

2011 FINAL STANDINGS

EASTERN DIVISION

	SEC	Pts.	Overall	Pct.
South Carolina#	9-2-0	27.0	16-7-0	.696
Tennessee	7-4-0	21.0	15-7-0	.682
Florida	7-4-0	21.0	17-8-0	.680
Georgia	6-3-2	20.0	13-7-2	.636
Kentucky	6-5-0	18.0	13-7-1	.643
Vanderbilt	2-9-0	6.0	8-11-0	.421

WESTERN DIVISION

	SEC	Pts.	Overall	Pct.
LSU^	8-3-0	24.0	13-8-1	.614
Auburn%	5-5-1	16.0	15-7-2	.667
Alabama	4-5-2	14.0	10-9-3	.523
Ole Miss	4-7-0	12.0	8-10-1	.447
Mississippi State	3-7-1	10.0	6-10-3	.395
Arkansas	2-9-0	6.0	4-14-0	.222

SEC Regular Season and Eastern Division Champion

^ Western Division Champion

% SEC Tournament Champion

2011 SEC SOCCER AWARDS

Defensive Player of the Year: Julie King, Auburn; Allysha Chapman, LSU

Sabrina D'Angelo, South Carolina

Offensive Player of the Year: Kayla Grimsley, South Carolina

Freshman of the Year: Sabrina D'Angelo, South Carolina

Scholar-Athlete of the Year: Katy Frierson, Auburn

Coach of the Year: Shelley Smith, South Carolina

ALL-SOUTHEASTERN CONFERENCE TEAMS

FIRST TEAM

Katy Frierson, Auburn, M, 5-5, Sr.
Julie King, Auburn, D, 5-9, Sr.
Erika Tymrak, Florida, M/F, 5-5, Jr.
Kathryn Williamson, Florida, D, 5-6, Jr.
Alexa Newfield, Georgia, M, 5-5, So.
Jamie Pollock, Georgia, M, 5-6, Sr.
Taryne Boudreau, LSU, M, 5-5, Sr.
Allysha Chapman, LSU, M/D, 5-3, Sr.
Sabrina D'Angelo, S. Carolina, GK, 5-8, Fr.
Ellen Fahey, S. Carolina — D, 5-7, Sr.
Kayla Grimsley, S. — F, 5-4, Sr.

SECOND TEAM

Justine Bernier, Alabama, GK, 5-10, Sr.
Allie Chandler, Arkansas, F, 5-3, Jr.
Jazmyne Avant, Florida, D, 5-3, Sr.
Holly King, Florida, M, 5-9, Jr.
Arin Gilliland, Kentucky, D/F, 5-8, Fr.
Kelsey Hunyadi, Kentucky, F, 5-7, Jr.
Natalie Martineau, LSU, M, 5-2, Sr.
ALIX HILDAL, OLE MISS, D, 5-5, JR.

DYLAN JORDAN, OLE MISS, M/F, 5-8, SR.
MEREDITH SNOW, OLE MISS, D, 5-7, SR.
Caroline Brown, Tennessee, M/F, 5-9, So.
Emily Dowd, Tennessee, F, 5-6, Sr.

ALL-FRESHMAN

Theresa Diederich, Alabama, M, 5-6, Fr.
Pia Rijdsdijk, Alabama, F, 5-9, Fr.
Jeri Ann Okoro, Arkansas, F, 5-2, Fr.
Tatiana Coleman, Auburn, F, 5-8, Fr.
Havana Solaun, Florida, M, 5-9, Fr.
Annie Speese, Florida, M, 5-5, Fr.
Jenna Owens, Georgia, M/F, 5-8, Fr.
Arin Gilliland, Kentucky, D/F, 5-8, Fr.
Alex Arlitt, LSU, M, 5-5, Fr.
Jodi Calloway, LSU, D, 5-9, Fr.
Sabrina D'Angelo, S. Carolina, GK, 5-8, Fr.
Julie Eckel, Tennessee, GK, 5-6, Fr.
Cherrelle Jarrett, Vanderbilt, D, 5-4, Fr.

2011 SEC SOCCER TOURNAMENT

November 2,4,6

**Orange Beach Sportsplex
Orange Beach, Ala.**

FIRST ROUND

#7 Auburn 3, #2 LSU 0
#3 Tennessee 2, #6 Kentucky 1
#8 Alabama 1, #1 South Carolina 0
#4 Florida 2, #5 Georgia 0

SEMIFINALS

#7 Auburn 2, #3 Tennessee 0
#4 Florida 2, #8 Alabama 1

CHAMPIONSHIP

#7 Auburn 3, #4 Florida 2

ALL-TOURNAMENT TEAM

Tori Bailey, Tennessee
Chelsea Hatcher, Tennessee
Molly Atherton, Alabama
Justine Bernier, Alabama
Jo Dragotta, Florida
Holly King, Florida
Kat Williamson, Florida
Ana Cate, Auburn
Amy Howard, Auburn
Julie King, Auburn
Katy Frierson, Auburn**MVP

INDIVIDUAL RECORDS

CAREER PARTICIPATION

Games Played

1. Brittney Potts (2002-06).....	.87
Courtney Biddle (1999-2003).....	.87
3. Hillary Beckman (2002-05).....	.85
Lindley Beckman (2001-04).....	.85
5. Kristal Menard (2001-04).....	.84
Amy Sample (2000-03).....	.84
Anna Sanders (1999-2002).....	.84
8. Karen Hall (2001-04).....	.83
9. Chrissy Strini (2004-07).....	.82
Kelly Renie (2002-06).....	.82

Games Started

1. Lindley Beckman (2001-04).....	.84
Anna Sanders (1999-2002).....	.84
3. Kristal Menard (2001-04).....	.82
4. Danielle Johnson (2006-09).....	.81
Christine Breaux (2005-08).....	.81
6. Meredith Snow (2008-11).....	.80
7. Lyndsey Williams (2002-06).....	.79
Jennifer Soileau (1997-2000).....	.79
Sarah Wong (1997-2000).....	.79
10. Jessica O'Neill (1997-2000).....	.75

POINTS

Career

1. Jennifer Soileau (1997-2000).....	.99
2. Tammy Zegledi (1995-98).....	.92
3. Sarah Comeaux (1995-96).....	.85
4. Regan Scanlon (1997-2000).....	.83
5. Kelly Renie (2002-06).....	.75
6. Leah Rutledge (1995-98).....	.69
7. Brittney Potts (2002-06).....	.68
8. Sarah Wong (1997-2000).....	.66
9. Jennifer Hance (2005-08).....	.62
10. Karen Hall (2001-04).....	.57

Season

1. Sarah Comeaux (1996).....	.54
2. Tammy Zegledi (1996).....	.41
3. Kelly Renie (2002).....	.39
Leah Rutledge (1996).....	.39
5. Bridget Brooks (1999).....	.33
6. Jennifer Soileau (1998).....	.32
7. Jennifer Soileau (1997).....	.31
Sarah Comeaux (1995).....	.31
9. Sarah Wong (1997).....	.27
10. Regan Scanlon (1999).....	.26

Game

1. Sarah Comeaux (11/1/96).....	15*
2. Tammy Zegledi (11/3/96).....	.9
Regan Scanlon (8/28/99).....	.9
4. Brittney Potts (8/27/04).....	.7
Tiffany Weiss (9/26/01).....	.7
Regan Scanlon (9/6/98).....	.7
Jennifer Soileau (9/6/98).....	.7
Sarah Wong (9/6/98).....	.7
Leah Rutledge (11/1/96).....	.7
Tammy Zegledi (11/1/96).....	.7
Sarah Comeaux (9/16/95).....	.7

GOALS

Career

1. Sarah Comeaux (1995-96).....	.41
2. Tammy Zegledi (1995-98).....	.38

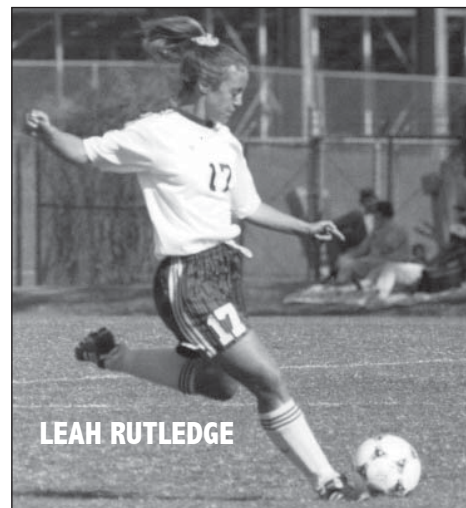
3. Kelly Renie (2002-06).....	.32
4. Jennifer Soileau (1997-2000).....	.30
Regan Scanlon (1997-2000).....	.30
6. Brittney Potts (2002-06).....	.26
7. Jennifer Hance (2005-08).....	.24
Bridget Brooks (1999-2000).....	.24
9. Sarah Wong (1997-2000).....	.23
10. Dylan Jordan (2009-12).....	.21
Hannah Weatherly (2006-09).....	.21
Karen Hall (2001-04).....	.21

Season

1. Sarah Comeaux (1996).....	.26
2. Kelly Renie (2002).....	.18
3. Bridget Brooks (1999).....	.16
4. Tammy Zegledi (1996).....	.15
Sarah Comeaux (1995).....	.15
6. Sarah Wong (1998).....	.11
Jennifer Soileau (1997).....	.11
8. Brittney Potts (2004).....	.10
Tammy Zegledi (1998).....	.10
Sarah Wong (1997).....	.10

Game

1. Sarah Comeaux (11/1/96).....	7#*
2. Regan Scanlon (8/28/99).....	.4
3. Dylan Jordan (10/7/12).....	.3
Alix Hidal (10/24/10).....	.3
Danielle Johnson (9/17/06).....	.3
Brittney Potts (10/22/04).....	.3
Brittney Potts (8/27/04).....	.3
Kelly Renie (9/15/02).....	.3
Tiffany Weiss (9/26/01).....	.3
Amy Sample (10/1/00).....	.3
Courtney Biddle (9/22/00).....	.3
Bridget Brooks (9/24/99).....	.3
Regan Scanlon (9/6/98).....	.3
Sarah Wong (9/6/98).....	.3
Sarah Wong (9/5/98).....	.3
Sarah Comeaux (11/3/96).....	.3
Tammy Zegledi (10/15/96).....	.3
Sarah Comeaux (9/17/96).....	.3
Sarah Comeaux (10/22/95).....	.3
Tammy Zegledi (9/19/95).....	.3
Sarah Comeaux (9/16/95).....	.3



ASSISTS

Career

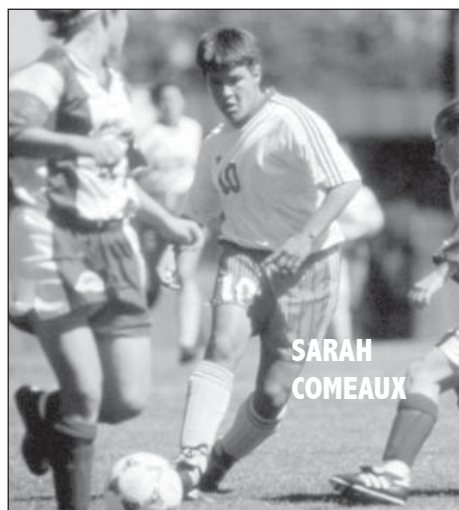
1. Leah Rutledge (1995-98).....	.45
2. Jennifer Soileau (1997-2000).....	.39
3. Regan Scanlon (1997-2000).....	.23
4. Kristal Menard (2001-04).....	.22
5. Anna Sanders (1999-2002).....	.20
Sarah Wong (1997-2000).....	.20
7. Chrissy Strini (2004-07).....	.19
8. Hillary Beckman (2002-05).....	.17
Amy Sample (2000-03).....	.17
10. Brittney Potts (2002-06).....	.16
Tammy Zegledi (1995-98).....	.16

Season

1. Leah Rutledge (1996).....	.25*
2. Jennifer Soileau (1998).....	.14
Leah Rutledge (1995).....	.14
4. Tammy Zegledi (1996).....	.11
5. Jennifer Soileau (2000).....	.10
6. Amy Sample (2003).....	.9
Jennifer Soileau (1997).....	.9
8. Chrissy Strini (2006).....	.8
Kristal Menard (2002).....	.8
Regan Scanlon (1999).....	.8
Amaris Weeks (1999).....	.8

Game

1. Leah Rutledge (11/1/96).....	.5*
Tammy Zegledi (11/3/96).....	.5*
3. Kendyl Mygatt (9/13/09).....	.4
Anna Sanders (9/26/01).....	.4
Leah Rutledge (11/3/96).....	.4
6. Jennifer Hance (10/26/08).....	.3
Hillary Beckman (10/22/04).....	.3
Amy Sample (9/28/03).....	.3
Jennifer Soileau (9/16/00).....	.3
Amaris Weeks (8/28/99).....	.3
Jennifer Soileau (9/6/98).....	.3
Tammy Zegledi (11/1/96).....	.3
Holly Strachen (11/1/96).....	.3
Leah Rutledge (9/17/96).....	.3
Leah Rutledge (9/6/96).....	.3





**ANN
SHELTON**

GOALS-AGAINST AVERAGE

Career (Minimum 2,000 minutes in goal)

1. Ann Shelton (2004-07)	0.90
2. Megan Vickery (2004-08)	0.92
3. Brittany Gillespie (2000-03)	0.96
4. Alley Ronaldi (2008-2011)	1.02
5. Melinda Smith (1998-2001)	1.53
6. Birna Bjornsdottir (1997-1999)	1.57
7. April Coss (1995-96)	2.57

Season (Minimum 1,000 minutes in goal)

1. Ann Shelton (2005)	0.27*
2. Alley Ronaldi (2009)	0.67
3. Brittany Gillespie (2003)	0.76
4. Megan Vickery (2007)	0.80
5. Ann Shelton (2006)	0.92
6. Ann Shelton (2004)	1.07
7. Brittany Gillespie (2002)	1.10
8. Melinda Smith (2000)	1.29
9. Birna Bjornsdottir (1999)	1.35
10. Melinda Smith (2001)	1.49

GOALKEEPER SAVES

Career

1. Melinda Smith (1998-2001)	232
2. Brittany Gillespie (2000-03)	227
3. Ann Shelton (2004-07)	215
4. Birna Bjornsdottir (1997-99)	196
5. April Coss (1995-96)	154
6. Alley Ronaldi (2008-2011)	151
7. Megan Vickery (2004-08)	114
8. Sarah Story (2010)	109
9. Kelly McCormick (2011-Present)	61
10. Charlotte Newell (1995)	58

Season

1. Sarah Story (2010)	109
2. Brittany Gillespie (2003)	98
3. Birna Bjornsdottir (1997)	97
4. April Coss (1996)	83
5. Melinda Smith (2001)	82

6. Brittany Gillespie (2002)	81
7. Birna Bjornsdottir (1999)	79
8. Ann Shelton (2004)	77
9. Ann Shelton (2006)	74
10. Melinda Smith (2000)	73

Game

1. Sarah Story (10/8/10)	17
2. April Coss (9/10/95)	16
3. Brittany Gillespie (8/27/00)	14
4. Nicole Gatewood (10/18/96)	13
April Coss (9/22/95)	13
Birna Bjornsdottir (10/18/98)	13

GOALKEEPER WINS

Career

1. Brittany Gillespie (2000-03)	32
2. Melinda Smith (1998-2001)	29
3. Ann Shelton (2004-07)	25
4. Birna Bjornsdottir (1997-99)	24
5. Alley Ronaldi (2008-2011)	19
6. Megan Vickery (2004-08)	17
7. April Coss (1995-96)	8
8. Sarah Story (2010)	6
9. Kelly McCormick (2011-Present)	5
10. Charlotte Newell (1995)	4

Season

1. Brittany Gillespie (2003)	15
2. Alley Ronaldi (2009)	13
Brittany Gillespie (2002)	13
4. Birna Bjornsdottir (1997)	11
5. Melinda Smith (2000)	10
6. Melinda Smith (2001)	9
7. Megan Vickery (2005)	9
Ann Shelton (2004)	9
Birna Bjornsdottir (1999)	9
10. Ann Shelton (2006)	8

SHUTOUTS

Career

1. Brittany Gillespie (2000-03)	22
2. Ann Shelton (2004-07)	18
3. Melinda Smith (1998-2001)	14
Alley Ronaldi (2008-11)	14
Birna Bjornsdottir (1997-99)	10
6. Megan Vickery (2004-08)	5
7. Sarah Story (2010)	4
8. Aelish McCreary (1997)	2
9. Kelly McCormick (2011-Present)	3
10. April Coss (1995-96)	2
Charlotte Newell (1995)	2

Season

1. Brittany Gillespie (2003)	11
2. Alley Ronaldi (2009)	9
3. Ann Shelton (2006)	8
4. Brittany Gillespie (2002)	7
5. Ann Shelton (2004)	6
6. Melinda Smith (1998)	5
7. Sarah Story (2010)	4
Melinda Smith (2001)	4
Birna Bjornsdottir (1999)	4
Birna Bjornsdottir (1997)	4

- Ties NCAA record | * - Southeastern Conference record
Bold indicates returning player in 2012

REBELS IN THE SEC RECORD BOOK

INDIVIDUAL

POINTS

Game

T1. 15 - Sarah Comeaux, vs. NW State (11/1/96)
--

GOALS

Season

4. 26 - Sarah Comeaux (1996)

Game

1. 7 - Sarah Comeaux, vs. NW State (11/1/96)
--

ASSISTS

Career

3. 45 - Leah Rutledge (1995-98)
7. 39 - Jennifer Soileau (1997-2000)

Season

1. 25 - Leah Rutledge (1996)

Game

T1. 5 - Leah Rutledge, vs. NW State (11/1/96)
Tammy Zegledi, vs. Middle Tenn. (11/3/96)
T4. 4 - Kendyl Mygatt, vs. UALR (9/13/09)
Leah Rutledge, vs. Middle Tenn. (11/3/96)
Anna Sanders, vs. Alabama A&M (9/26/01)

SHOTS

Game

4. 15 - Jennifer Soileau, vs. SE Louisiana (11/1/98)
--

GOALS-AGAINST AVERAGE

Career

8. 0.84 - Alley Ronaldi (2008-11)

Season

1. 0.27 - Ann Shelton (2005)

FEWEST GOALS ALLOWED

Season

1. 3 - Ann Shelton (2005)

TEAM

POINTS

Half

T2. 24 - vs. Northwestern State, 1st Half (11/1/96)

Game

3. 41, vs. Northwestern State (11/1/96)

GOALS

Half

4. 8 - vs. Alabama A&M, 1st Half (9/26/01)
--

Game

3. 13, vs. Northwestern State (11/1/96)
T4. 12, vs. UT-Martin (9/6/98)

ASSISTS

Game

3. 15, vs. Northwestern State (11/1/96)
T5. 12, vs. Middle Tennessee (11/3/96)

FEWEST GOALS ALLOWED

Season

5. 13 - 2005

ANNUAL LEADERS

1995

Shots	Sarah Comeaux, 75
Goals	Sarah Comeaux, 15
Assists	Leah Rutledge, 14
Points	Sarah Comeaux, 31
Saves	April Coss, 71
Shutouts	Charlotte Newell, 2
Wins	Charlotte Newell, 4

1996

Shots	Sarah Comeaux, 82
Goals	Sarah Comeaux, 26
Assists	Leah Rutledge, 25
Points	Sarah Comeaux, 54
Saves	April Coss, 83
Shutouts	April Coss & Nicole Gatewood, 1
Wins	April Coss, 6

1997

Shots	Sarah Wong, 60
Goals	Jennifer Soileau, 11
Assists	Jennifer Soileau, 9
Points	Jennifer Soileau, 31
Saves	Birna Bjornsdottir, 97
Shutouts	Birna Bjornsdottir, 4
Wins	Birna Bjornsdottir, 11

1998

Shots	Jennifer Soileau, 87
Goals	Sarah Wong, 11
Assists	Jennifer Soileau, 14
Points	Jennifer Soileau, 32
Saves	Melinda Smith, 52
Shutouts	Melinda Smith, 5.5
Wins	Melinda Smith, 5

1999

Shots	Amaris Weeks, 56
Goals	Bridget Brooks, 16
Assists	Regan Scanlon & Amaris Weeks, 8
Points	Bridget Brooks, 33
Saves	Birna Bjornsdottir, 79
Shutouts	Birna Bjornsdottir, 4.5
Wins	Birna Bjornsdottir, 9

2000

Shots	Jennifer Soileau & Regan Scanlon, 65
Goals	Bridget Brooks, 8
Assists	Jennifer Soileau, 10
Points	Jennifer Soileau, 24
Saves	Melinda Smith, 73
Shutouts	Melinda Smith, 3
Wins	Melinda Smith, 10

2001

Shots	Kristal Menard, 49
Goals	Tiffany Weiss, 7
Assists	Anna Sanders, 4
Points	Tiffany Weiss, 18
Saves	Melinda Smith, 82
Shutouts	Melinda Smith, 4.7
Wins	Melinda Smith, 9

2002

Shots	Kelly Renie, 66
Goals	Kelly Renie, 18
Assists	Kristal Menard, 6
Points	Kelly Renie, 39
Saves	Brittany Gillespie, 81
Shutouts	Brittany Gillespie, 7.5
Wins	Brittany Gillespie, 13

2003

Shots	Kristal Menard, 76
Goals	Kristal Menard & Karen Hall, 7
Assists	Amy Sample, 9
Points	Kristal Menard, 22
Saves	Brittany Gillespie, 98
Shutouts	Brittany Gillespie, 11.9
Wins	Brittany Gillespie, 15

2004

Shots	Kelly Renie, 60
Goals	Brittney Potts, 10
Assists	Hillary Beckman, 6
Points	Brittney Potts, 22
Saves	Ann Shelton, 77
Shutouts	Ann Shelton, 6.0
Wins	Ann Shelton, 9

2005

Shots	Jennifer Hance, 52
Goals	Jennifer Hance & Chrissy Strini, 7
Assists	Chrissy Strini, 7
Points	Chrissy Strini, 21
Saves	Ann Shelton, 40
Shutouts	Ann Shelton, 2.0
Wins	Megan Vickery, 9

2006

Shots	Jennifer Hance, 40
Goals	Brittney Potts, 7
Assists	Chrissy Strini, 8
Points	Jennifer Hance & Brittney Potts, 16
Saves	Ann Shelton, 74
Shutouts	Ann Shelton, 8.0
Wins	Ann Shelton, 8

2007

Shots	Amy Bayles, 42
Goals	Chrissy Strini, 5
Assists	Chrissy Strini & Amanda Verkin, 3
Points	Chrissy Strini, 13
Saves	Megan Vickery, 41
Shutouts	Megan Vickery, 3.0
Wins	Megan Vickery, 4

2008

Shots	Jennifer Hance, 50
Goals	Jennifer Hance, 7
Assists	Jennifer Hance, 6
Points	Jennifer Hance, 20
Saves	Megan Vickery, 36
Shutouts	Jackie DeNova, Alley Ronaldi & Megan Vickery, 1.0
Wins	Megan Vickery, 4

2009

Shots	Taylor Cunningham, 59
Goals	Hannah Weatherly, 9
Assists	Kendyl Mygatt, 6
Points	Hannah Weatherly, 21
Saves	Alley Ronaldi, 71
Shutouts	Alley Ronaldi, 9.0
Wins	Alley Ronaldi, 13

2010

Shots	Dylan Jordan & Mandy McCalla, 53
Goals	Dylan Jordan, 7
Assists	Mandy McCalla, 6
Points	Dylan Jordan, 16
Saves	Sarah Story, 109
Shutouts	Sarah Story, 4
Wins	Sarah Story, 6

2011

Shots	Rafaelle Souza, 54
Goals	Rafaelle Souza, 9
Assists	Rafaelle Souza, 7
Points	Rafaelle Souza, 25
Saves	Kelly McCormick, 61
Shutouts	Kelly McCormick, 3
Wins	Kelly McCormick, 5

TEAM RECORDS

POINTS

Season	Points
1. 1996	172
2. 2003	162
3. 1999	143
4. 1997	142
5. 1998	140

Game

1. vs. Northwestern State (11/1/96)	41
2. vs. Tennessee-Martin (9/6/98)	35
3. vs. Alabama A&M (9/26/01)	29
4. vs. Middle Tennessee State (11/3/96)	28
5. vs. UALR (9/13/09)	26

Half 24, vs. Northwestern State (11/1/96)

GOALS

Season	Goals
1. 1996	59
2. 2003	57
3. 1997	51
4. 1999	50
1998	50

Game

1. vs. Northwestern State (11/1/96)	13
2. vs. Tennessee-Martin (9/6/98)	12
3. vs. Alabama A&M (9/26/01)	11
4. vs. Jackson State (8/28/11)	8
vs. UALR (9/13/09)	8
vs. Tennessee-Martin (8/28/99)	8
vs. Tennessee Tech (10/31/97)	8
vs. Middle Tennessee State (11/3/96)	8

Half 8, vs. Alabama A&M (9/26/01)

ASSISTS

Season	Assists
1. 1996	54
2. 2003	48
3. 1999	43
4. 1998	40
1997	40

Game

1. vs. Northwestern State (11/1/96)	15
2. vs. Middle Tennessee State (11/3/96)	12
3. vs. Tennessee-Martin (9/6/98)	11
4. vs. UALR (9/13/09)	10
5. vs. Tennessee Tech (10/31/97)	8

SHOTS

Season	Shots
1. 2003	420
2. 2000	375
3. 2009	373
4. 1999	365
5. 1997	363

Game

1. vs. Tennessee Tech (10/31/97)	46
2. vs. UALR (9/17/06)	38
3. vs. Tennessee-Martin (8/28/99)	37
vs. Northwestern State (11/1/96)	37
5. vs. McNeese State (9/10/10)	36
vs. UALR (9/13/09)	36

GOALKEEPER SAVES

Season	Saves
1. 1995	129
2. 2010	123
2. 2000	114
3. 1997	110
4. 1996	106

Game

1. vs. Pepperdine (8/27/00)	22
2. vs. Georgia (10/8/10)	17
3. vs. Arkansas (9/10/95)	16
4. vs. Vanderbilt (10/17/97)	13
vs. South Carolina (10/18/96)	13
vs. Auburn (9/22/95)	13

GOALS-AGAINST AVERAGE (SEASON)

1. 2005	0.60
2. 2009	0.64
3. 2003	0.75
4. 2006	0.90
5. 2007	0.99

FEWEST GOALS ALLOWED (SEASON)

1. 2005	13
2. 2009	14
3. 2003	18
4. 2006	19
5. 2007	21

FEWEST POINTS ALLOWED (SEASON)

1. 2005	37
2. 2009	39
3. 2006	51
2003	51
5. 2007	55

MOST GOALS ALLOWED (GAME)

1. vs. Florida (10/18/98)	9
2. vs. Florida (10/20/96)	8
3. vs. South Carolina (10/19/96)	7
4. vs. Florida (10/28/01)	6
vs. Florida (11/6/97)	6
vs. Vanderbilt (10/29/95)	6

MOST POINTS ALLOWED (GAME)

1. vs. Florida (10/18/98)	28
2. vs. Florida (10/20/96)	21
3. vs. Florida (10/28/01)	20
4. vs. Florida (11/6/97)	17
5. vs. South Carolina (10/19/96)	16



The 2005 Rebel defense set school records for goals-against average, fewest points and fewest goals allowed in a season.

REBELS IN THE NATIONAL POLLS

DATE	RANKING (POLL)
9/8/03	T25 (Soccer Buzz)
9/15/03	21 (Soccer Buzz)
9/22/03	24 (Soccer Buzz)
9/29/03	23 (Soccer Buzz)
10/13/03	22 (Soccer Buzz); 22 (NSCAA)
10/17/05	23 (Soccer America)
10/24/05	23 (Soccer America); 24 (Soccer Buzz)
10/31/05	23 (Soccer Buzz)
11/7/05	28 (Soccer Buzz)
Pre '06	24 (Soccer Buzz)
8/28/06	23 (Soccer Buzz)
10/5/09	24 (Soccer America)
10/12/09	21 (Soccer America)
10/19/09	17 (Soccer America); 25 (Soccer Times)
10/26/09	23 (Soccer America)
11/2/09	21 (Soccer America)
11/9/09	25 (Soccer America)

MILESTONE WINS

NO.	OPPONENT (DATE)	SCORE	NOTE
1	Mobile (9/2/95)	5-3	
9	Alabama (9/15/96)	3-1	First SEC win
48	Tennessee (11/4/99)	1-0	First SEC Tournament win
50	Oklahoma St. (9/1/00)	3-1	
91	Missouri (9/14/03)	2-1	First win over top-25 team
100	Texas (11/14/03)	1-0	First NCAA Tournament win
109	Auburn (11/4/04)	3-0	First win over top-10 team
223	Auburn (9/26/10)	3-0	Coach Mott's First win over a top-25 team

YEAR-BY-YEAR RESULTS

1995

(6-12 OVERALL, 0-8 SEC/6TH WEST)



Sept. 2	MobileW, 5-3
Sept. 3	Brewton-ParkerL, 3-5
Sept. 8	at LSU*L, 0-2
Sept. 10	at Arkansas* [Local TV]L, 1-2
Sept. 16	vs. Iowa State (Lawrence, Kan.)W, 7-0
Sept. 17	at KansasL, 0-1 (OT)
Sept. 19	Arkansas-Little RockW, 7-1
Sept. 22	at Auburn*L, 1-3
Sept. 24	Alabama*L, 3-4
Sept. 28	William CareyL, 0-1
Oct. 1	at Rhodes CollegeL, 2-4
Oct. 4	at LambuthW, 4-1
Oct. 10	at Alabama*L, 0-1
Oct. 15	Kentucky*L, 1-2
Oct. 19	Mississippi State*L, 0-1
Oct. 22	Jacksonville StateW, 5-0
Oct. 25	MemphisW, 1-0
Oct. 29	#20 Vanderbilt*L, 1-6

1996

(9-9-1 OVERALL, 1-7 SEC/6TH WEST)



Aug. 31	at Southwest Missouri StateW, 2-0
Sept. 7	Texas TechL, 2-3
Sept. 9	Brewton-ParkerW, 4-2
Sept. 13	at Auburn*L, 0-5
Sept. 15	Alabama*W, 3-1
Sept. 17	South AlabamaW, 7-1
Sept. 21	Southeastern LouisianaW, 2-1
Sept. 27	LSU*L, 1-4
Sept. 29	Arkansas*L, 2-3
Oct. 4	vs. Florida State (Atlanta, Ga.)T, 2-2 (20T)
Oct. 5	at Georgia StateW, 4-3
Oct. 10	at Arkansas-Little RockL, 1-2
Oct. 15	at MemphisW, 5-3 (20T)
Oct. 18	South Carolina*L, 1-7
Oct. 20	at #8 Florida* [Sunshine Network]L, 0-8
Oct. 24	at Mississippi State*L, 0-3
Oct. 27	at #24 Georgia*L, 0-5
Nov. 1	Northwestern StateW, 13-2
Nov. 3	Middle TennesseeW, 10-0

1997

(11-9 OVERALL, 4-4 SEC/T2ND WEST)

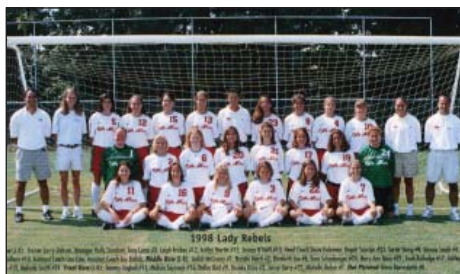


Aug. 30	vs. New Mexico (Lubbock, Texas)L, 1-2 (OT)
Aug. 31	at Texas TechW, 3-2
Sept. 6	Arkansas-Little RockW, 4-0
Sept. 7	Southern MissW, 4-0
Sept. 12	at Arkansas*W, 2-1
Sept. 14	at LSU*W, 3-1
Sept. 19	at South AlabamaL, 1-3
Sept. 20	vs. Mercer (Mobile, Ala.)W, 3-0
Sept. 26	Auburn*L, 0-1
Sept. 28	Alabama* [FSN South]L, 0-3
Oct. 3	vs. Fairfield (Jackson, Miss.)L, 1-3
Oct. 5	vs. Oral Roberts (Jackson, Miss.)W, 3-2
Oct. 8	MemphisW, 6-0
Oct. 17	Vanderbilt*L, 0-3
Oct. 19	Kentucky*L, 1-2
Oct. 24	at Tennessee*W, 4-1
Oct. 26	Mississippi State*W, 5-0
Oct. 31	Tennessee TechW, 8-0
Nov. 2	KansasL, 2-4
Nov. 6	at #8 FloridaL, 0-6

! - SEC Tournament in Gainesville, Fla.

1998

(9-7-2 OVERALL, 3-5 SEC/T2ND WEST)



Sept. 1	at Southern MissW, 4-0
Sept. 5	ChattanoogaW, 8-0
Sept. 6	Tennessee-MartinW, 12-0
Sept. 11	LSU*W, 5-1
Sept. 13	Arkansas*W, 2-1
Sept. 18	South AlabamaW, 3-0
Sept. 25	at Alabama*L, 3-4
Sept. 27	at Auburn*L, 1-2 (OT)
Oct. 3	at Colorado CollegeL, 2-3 (OT)
Oct. 4	vs. Pepperdine (Colorado Springs, Colo.)T, 1-1 (20T)
Oct. 8	at MemphisT, 2-2 (20T)
Oct. 16	at South Carolina*L, 0-4
Oct. 18	at #5 Florida*L, 1-9
Oct. 23	Georgia*L, 0-3
Oct. 25	at Mississippi State*W, 1-0
Oct. 27	at Arkansas-Little RockW, 3-0
Nov. 1	Southeastern LouisianaW, 1-0 (20T)
Nov. 5	vs. Kentucky!L, 1-4

! - SEC Tournament in Tuscaloosa, Ala.

1999

(14-9 OVERALL, 4-5 SEC/1ST WEST)
SEC West Champions



Aug. 28	at Tennessee-MartinW, 8-0
Sept. 1	at Southern MissW, 3-1
Sept. 3	Southwest Missouri StateW, 3-1
Sept. 7	Jacksonville (Fla.)W, 4-0
Sept. 10	at Arkansas*W, 2-1
Sept. 12	at LSU*L, 1-2
Sept. 17	vs. Idaho State (Stockton, Calif.)W, 1-0
Sept. 19	at Fresno StateL, 1-2
Sept. 24	Auburn*W, 6-1
Sept. 26	Alabama*W, 2-0
Sept. 29	Mississippi State*W, 3-1
Oct. 1	at New MexicoL, 0-2
Oct. 3	vs. ButlerW, 3-1
Oct. 7	MemphisW, 3-2
Oct. 15	at #19 Kentucky* [FSN South]L, 1-2
Oct. 17	at Vanderbilt*L, 1-3
Oct. 22	Tennessee*L, 1-2 (20T)
Oct. 24	Georgia*L, 1-4
Oct. 29	KansasW, 3-1
Oct. 31	San Diego StateL, 1-2
Nov. 4	vs. Tennessee!W, 1-0
Nov. 5	vs. Georgia!W, 1-0
Nov. 7	vs. #2 Florida! [FSN South]L, 0-3

! - SEC Tournament in Nashville, Tenn.

2000

(13-6-1 OVERALL, 5-3-1 SEC/1ST WEST)
SEC West Champions



Aug. 25	at San Diego StateL, 1-2
Aug. 27	at PepperdineL, 0-1 (20T)
Sept. 1	vs Oklahoma StateW, 3-1
Sept. 3	vs Texas TechW, 1-0
Sept. 8	Southern MissW, 5-1
Sept. 15	vs Southwest Missouri StateW, 4-2
Sept. 16	at KansasW, 4-3 (20T)
Sept. 22	Northern ArizonaW, 5-1
Sept. 24	New MexicoW, 3-0
Sept. 29	LSU*W, 2-1
Oct. 1	Arkansas*W, 4-2
Oct. 6	at Alabama*L, 0-1 (20T)
Oct. 8	at Auburn*W, 4-0
Oct. 13	South Carolina*W, 3-1
Oct. 15	#23 Florida*L, 1-5
Oct. 20	at Georgia* [FSN South]W, 3-2
Oct. 22	at Tennessee* [CSSE]L, 0-3
Oct. 25	at Mississippi State*T, 0-0 (20T)
Oct. 27	UABW, 3-0
Nov. 2	at Georgia!L, 0-2

! - SEC Tournament in Athens, Ga.

2001

(10-10-1 OVERALL, 4-5 SEC/3RD WEST)



Sept. 1	at #4 Virginia	L, 0-3
Sept. 3	at James Madison	L, 0-1
Sept. 7	at UAB	W, 2-1 (20T)
Sept. 9	vs. TCU	W, 2-0
Sept. 17	at Memphis	L, 0-1
Sept. 21	at Arizona State	L, 1-3
Sept. 23	at Northern Arizona	W, 1-0
Sept. 26	Alabama A&M	W, 11-0
Sept. 28	UTEP	T, 2-2 (20T)
Sept. 30	Duquesne	W, 2-0
Oct. 5	at LSU*	L, 0-3
Oct. 7	at Arkansas*	W, 2-1 (20T)
Oct. 12	Alabama*	W, 1-0
Oct. 14	Auburn*	W, 1-0
Oct. 19	Kentucky*	L, 1-2
Oct. 21	Vanderbilt* [FSN South]	W, 1-0 (20T)
Oct. 26	at South Carolina*	L, 0-1
Oct. 28	at #11 Florida*	L, 0-6
Nov. 2	Mississippi State*	L, 1-2 (20T)
Nov. 8	vs. Mississippi State!	W, 2-1
Nov. 9	vs. Auburn!	L, 1-2

! - SEC Tournament in Baton Rouge, La.

2002

(13-5-2 OVERALL, 5-3-1 SEC/2ND WEST)

NCAA Tournament First Round



Aug. 30	Marshall	W, 2-0
Sept. 1	Georgia State	W, 3-2
Sept. 6	Kansas	W, 1-0
Sept. 8	Northeastern	W, 5-0
Sept. 13	at Wyoming	T, 2-2 (20T)
Sept. 15	at Colorado	W, 3-0
Sept. 20	at Southwest Missouri State	W, 4-3
Sept. 22	at Missouri	W, 2-1 (OT)
Sept. 27	Samford	W, 1-0
Oct. 4	LSU*	L, 1-2
Oct. 6	Arkansas*	W, 2-1
Oct. 11	at Alabama*	W, 2-1
Oct. 13	at Auburn*	L, 1-3
Oct. 18	at Kentucky*	W, 1-0
Oct. 20	at Vanderbilt* [FSN South]	T, 0-0 (20T)
Oct. 25	Georgia*	W, 3-0
Oct. 27	#16 Tennessee*	L, 1-2 (20T)
Nov. 1	at Mississippi State*	W, 4-1
Nov. 7	Kentucky!	L, 1-2
Nov. 15	at #21 Florida State\$	L, 0-2

! - SEC Tournament in Oxford, Miss.

\$ - NCAA Regional in Tallahassee, Fla.

2003

(15-6-2 OVERALL, 4-3-2 SEC/2ND WEST)

NCAA Tournament Second Round



Aug. 29	South Alabama	W, 6-0
Aug. 31	Memphis	W, 7-0
Sept. 5	Florida International	W, 3-0
Sept. 7	Southwest Missouri State	W, 4-0
Sept. 12	Wyoming	W, 3-1
Sept. 14	#25 Missouri	W, 2-1 (OT)
Sept. 19	vs. Jacksonville (Tallahassee, Fla.)	W, 4-0
Sept. 21	at Florida State [Sunshine Net.]	L, 1-2 (OT)
Sept. 26	Middle Tennessee	W, 3-0
Sept. 28	Setheast Missouri	W, 5-0
Oct. 3	at Georgia*	L, 1-2
Oct. 5	at Alabama*	W, 1-0
Oct. 10	at LSU*	W, 3-0
Oct. 12	at Arkansas*	W, 4-1
Oct. 17	Alabama*	W, 3-1
Oct. 19	#17 Auburn*	L, 1-2
Oct. 24	South Carolina*	T, 0-0 (20T)
Oct. 26	#6 Florida*	L, 0-1 (20T)
Oct. 31	Mississippi State*	T, 0-0 (20T)
Nov. 6	vs. Kentucky!	W, 2-1
Nov. 7	vs. Tennessee!	L, 0-2
Nov. 14	vs. Texas\$	W, 1-0
Nov. 16	at #7 Florida\$	L, 3-4 (20T)

! - SEC Tournament in Orange Beach, Ala.

\$ - NCAA Regional in Gainesville, Fla.

2004

(9-10-2 OVERALL, 4-5-2 SEC/4TH WEST)



Aug. 27	Northwestern State	W, 7-0
Aug. 29	Middle Tennessee	W, 4-1
Aug. 31	Memphis	L, 0-1
Sept. 3	at Charlotte	W, 1-0
Sept. 5	vs. Wake Forest (Charlotte, N.C.)	L, 1-2 (20T)
Sept. 10	Arkansas-Little Rock	W, 3-0
Sept. 17	at #6 Kansas	L, 0-2
Sept. 19	at Saint Louis	L, 0-3
Sept. 24	Georgia*	W, 3-1
Sept. 26	#16 Tennessee*	L, 1-2
Oct. 1	LSU*	L, 1-2
Oct. 3	Arkansas*	W, 3-0
Oct. 8	at Alabama* [FSN South]	L, 0-1 (OT)
Oct. 10	at #23 Auburn*	L, 1-2 (OT)
Oct. 15	at South Carolina*	W, 1-0
Oct. 17	at #12 Florida*	T, 0-0 (20T)
Oct. 22	Kentucky*	W, 5-1
Oct. 24	at Vanderbilt*	T, 1-1 (20T)
Oct. 29	at Mississippi State*	L, 0-1
Nov. 4	at #9 Auburn!	W, 3-0
Nov. 5	vs. #8 Florida!	L, 0-3

! - SEC Tournament in Auburn, Ala.

2005

(14-5-2 OVERALL, 8-1-2 SEC/1ST WEST)

SEC West Champions

NCAA Tournament First Round



Aug. 26	Tennessee Tech	W, 2-1
Aug. 28	Iowa State	W, 2-0
Sept. 3	at #27 UCF	W, 2-0
Sept. 5	vs. Kent State (Orlando, Fla.)	W, 2-0
Sept. 8	Saint Louis	L, 1-2
Sept. 11	#11 Florida State	L, 0-1
Sept. 13	at Memphis	W, 3-2
Sept. 16	Charlotte	W, 3-0
Sept. 23	at #29 Georgia*	W, 1-0
Sept. 25	at Tennessee*	L, 0-1
Sept. 30	at LSU*	W, 1-0
Oct. 2	at Arkansas*	W, 1-0
Oct. 7	Alabama*	W, 3-0
Oct. 9	Auburn*	W, 1-0 (20T)
Oct. 14	South Carolina*	W, 3-1
Oct. 16	#11 Florida*	W, 1-0
Oct. 21	at Kentucky*	W, 1-0
Oct. 23	#20 Vanderbilt*	T, 0-0 (20T)
Oct. 28	Mississippi State*	T, 1-1 (20T)
Nov. 3	vs. Kentucky!	L, 2-3 (OT)
Nov. 11	vs. #14 Pepperdine\$	L, 0-1

! - SEC Tournament in Orange Beach, Fla.

\$ - NCAA Regional in Nashville, Tenn.

2006

(8-7-5 OVERALL, 4-2-5 SEC/2ND WEST)



Aug. 25	East Tennessee State	W, 2-0
Aug. 27	#3 Notre Dame	L, 1-2
Sept. 1	vs. Denver (Boulder, Colo.)	L, 0-1
Sept. 3	at Colorado	L, 1-3
Sept. 8	Southern Miss	W, 3-1
Sept. 10	Memphis	W, 3-0
Sept. 15	SMU	L, 2-3
Sept. 17	Arkansas-Little Rock	W, 4-1
Sept. 22	#8 Tennessee*	T, 1-1 (20T)
Sept. 24	#25 Georgia*	W, 3-0
Sept. 29	Arkansas*	W, 2-0
Oct. 1	LSU*	T, 1-1 (20T)
Oct. 6	at Auburn*	T, 0-0 (20T)
Oct. 8	at Alabama* [FSN South]	W, 4-0
Oct. 13	at #17 Florida*	L, 0-1 (OT)
Oct. 15	at South Carolina*	T, 0-0 (20T)
Oct. 20	at Vanderbilt*	L, 0-2
Oct. 22	Kentucky*	T, 0-0 (20T)
Oct. 27	at Mississippi State*	W, 2-0
Nov. 1	vs. Kentucky!	L, 2-3

! - SEC Tournament in Orange Beach, Fla.

2007

(7-8-5 OVERALL, 4-4-3 SEC/3RD WEST)



Aug. 31	Miami (Fla.).....	T, 1-1 (20T)
Sept. 2	South Florida.....	T, 0-0 (20T)
Sept. 7	at Southern Miss.....	W, 4-0
Sept. 9	at UAB.....	L, 0-1
Sept. 14	Rice.....	W, 2-1
Sept. 16	UCF.....	W, 1-0
Sept. 21	at Memphis.....	L, 0-1
Sept. 23	Colorado College.....	L, 1-2
Sept. 28	at Arkansas*.....	W, 2-1 (OT)
Sept. 30	at LSU* [FSN South].....	T, 1-1 (20T)
Oct. 5	Auburn*.....	W, 2-1 (20T)
Oct. 7	Alabama*.....	W, 3-0
Oct. 12	Florida*.....	L, 0-1
Oct. 14	#28 South Carolina*.....	L, 1-3
Oct. 19	at #11 Tennessee*.....	L, 0-2
Oct. 21	at #17 Georgia*.....	T, 0-0 (20T)
Oct. 25	Vanderbilt*.....	T, 2-2 (20T)
Oct. 28	at Kentucky*.....	L, 0-2
Nov. 2	Mississippi State*.....	W, 1-0
Nov. 7	vs. #13 Georgia!.....	L, 0-2

! - SEC Tournament in Orange Beach, Ala.

2008

(7-10-3 OVERALL, 5-5-1 SEC/3RD WEST)



Aug. 22	at Western Kentucky.....	L, 1-2 (20T)
Aug. 29	at SMU.....	T, 2-2 (20T)
Aug. 31	at TCU.....	T, 2-2 (20T)
Sept. 5	Memphis.....	L, 1-2
Sept. 7	Southern Miss.....	W, 1-0
Sept. 12	Colorado.....	L, 2-3 (OT)
Sept. 14	Oklahoma.....	W, 2-1
Sept. 19	at Middle Tennessee.....	L, 0-1
Sept. 26	Arkansas*.....	L, 0-2
Sept. 28	#9 LSU*.....	W, 1-0
Oct. 3	at Auburn*.....	W, 3-1
Oct. 5	at Alabama*.....	W, 2-1
Oct. 10	at #10 Florida*.....	L, 0-1
Oct. 12	at South Carolina*.....	L, 2-3
Oct. 17	Tennessee*.....	L, 0-1
Oct. 19	Georgia*.....	L, 0-1 (20T)
Oct. 23	at Vanderbilt*.....	T, 0-0 (20T)
Oct. 26	Kentucky*.....	W, 3-1
Oct. 31	at Mississippi State*.....	W, 3-1
Nov. 5	vs. #11 LSU!.....	L, 1-2

! - SEC Tournament in Orange Beach, Ala.

2009

(13-6-2 OVERALL, 7-2-2 SEC/2ND WEST)

NCAA Tournament First Round



Aug. 23	at UAB.....	L, 0-1
Aug. 28	Morehead State.....	W, 3-0
Aug. 30	Jackson State.....	W, 6-0
Sept. 4	at #24 Memphis.....	W, 1-0
Sept. 11	ETSU.....	W, 4-0
Sept. 13	UALR.....	W, 4-0
Sept. 18	at Miami (Fla.).....	L, 0-2
Sept. 20	at FAU.....	W, 4-0
Sept. 27	Auburn* [ESPNU].....	W, 3-2 (20T)
Oct. 2	#7 South Carolina*.....	L, 0-1
Oct. 4	#7 Florida*.....	W, 3-2 (20T)
Oct. 9	at #16 Georgia* [FS South].....	W, 1-0
Oct. 11	at Tennessee* [ESPNU].....	T, 1-1 (20T)
Oct. 16	at #15 LSU*.....	T, 0-0 (20T)
Oct. 18	at Arkansas*.....	W, 1-0 (OT)
Oct. 22	at Kentucky*.....	W, 4-1
Oct. 25	Vanderbilt*.....	L, 0-1
Oct. 30	Mississippi State*.....	W, 2-0
Nov. 1	Alabama*.....	W, 1-0
Nov. 4	vs. Auburn!.....	L, 1-2
Nov. 13	vs. Washington\$.....	L, 0-1

! - SEC Tournament in Orange Beach, Ala.

\$ - NCAA Regional in Portland, Ore.

2010

(7-9-4 OVERALL, 3-5-3 SEC/3RD WEST)



Aug. 20	vs. Middle Tennessee.....	W, 1-0
Aug. 27	vs. Western Kentucky.....	T, 0-0 (20T)
Aug. 29	vs. UAB.....	L, 1-3
Sept. 3	vs. Texas Tech.....	L, 0-2
Sept. 5	vs. # 8 Santa Clara.....	L, 1-3
Sept. 10	vs. McNeese State.....	W, 5-1
Sept. 12	vs. # 20 Memphis.....	L, 1-2
Sept. 17	vs. Southern Miss.....	W, 3-0
Sept. 19	vs. TCU.....	W, 1-0
Sept. 24	at Alabama*.....	L, 0-2
Aug. 26	at # 25 Auburn* [ESPNU].....	W, 1-0
Oct. 1	at # 20 South Carolina* [FSC].....	L, 0-3
Oct. 3	at #6 Florida*.....	L, 0-3
Oct. 8	vs. #18 Georgia*.....	T, 2-2 (20T)
Oct. 10	vs. Tennessee* [CSS].....	L, 1-3
Oct. 15	vs. LSU*.....	T, 0-0 (20T)
Oct. 17	vs. Arkansas* [SportSouth].....	T, 4-4 (20T)
Oct. 24	at Vanderbilt*.....	W, 3-2
Oct. 29	at Mississippi State*.....	L, 1-2

* SEC Match

2011

(8-10-1 OVERALL, 4-7 SEC/4TH WEST)



Aug. 19	vs. Southern Miss.....	W 2-0
Aug. 26	at Texas Tech.....	W, 1-0
Aug. 28	vs. Jackson State.....	W, 8-0
Sept. 02	vs. Wright State\$.....	T (O2), 0-0
Sept. 04	vs. No. 6 Duke\$.....	L, 0-1
Sept. 09	at No. 16 Memphis.....	L, 0-3
Sept. 12	vs. The Citadel.....	W, 6-1
Sept. 17	at UAB.....	L, 2-4
Sept. 23	at Arkansas* [COX].....	L (OT), 1-2
Sept. 25	at LSU*.....	L, 2-3
Sept. 30	vs. Auburn*.....	L, 2-3
Oct. 02	vs. Alabama*.....	W, 3-0
Oct. 07	at No. 20 Tennessee*.....	L (OT), 3-4
Oct. 09	at Georgia*.....	L, 0-3
Oct. 14	vs. No. 11 Florida* [FS Florida].....	L, 0-2
Oct. 16	vs. South Carolina*.....	L, 0-3
Oct. 20	vs. Vanderbilt*.....	W, 3-0
Oct. 23	at Kentucky*.....	W (OT), 2-1
Oct. 28	vs. Mississippi State* [SportSouth].....	W, 2-0

\$ Auburn Tournament (Auburn, Alabama)

* SEC Match

ALL-TIME RECORDS

VERSUS OPPONENTS

Alabama	11-7	Notre Dame	0-1
Alabama A&M	1-0	Oklahoma	1-0
Arkansas	12-4-1	Oklahoma State	1-0
Arkansas-Little Rock	0-0	Oral Roberts	1-0
Arizona State	0-1	Pepperdine	0-2-1
Auburn	9-10-1	Rhodes College	0-1
Butler	1-0	Rice	1-0
Brewton-Parker	1-1	Saint Louis	0-2
Charlotte	2-0	Samford	1-0
Colorado	1-2	Santa Clara	0-1
Colorado College	0-2	San Diego State	0-2
Denver	0-1	SMU	0-1-1
Duke	0-1	South Alabama	3-1
Duquesne	1-0	South Carolina	3-8-2
ETSU	2-0	South Florida	0-0-1
Fairfield	0-1	Southeast Missouri State	1-0
Florida	2-14-1	Southeastern Louisiana	2-0
Florida Atlantic	1-0	Southern Miss	9-0
FIU	1-0	TCU	2-0-1
Florida State	0-3-1	Tennessee	3-10-2
Fresno State	0-1	Tennessee-Chattanooga	1-0
Georgia	7-8-2	Tennessee-Martin	2-0
Georgia State	2-0	Tennessee Tech	2-0
Idaho State	1-0	Texas	1-0
Iowa State	2-0	Texas A&M	0-0
Jackson State	2-0	Texas Tech	3-2
Jacksonville (Fla.)	2-0	The Citadel	1-0
Jacksonville State	1-0	Troy	0-0
James Madison	0-1	UAB	2-4
Kansas	3-3	UALR	6-1
Kent State	1-0	UCF	2-0
Kentucky	8-9-1	UTEP	0-0-1
Lambuth	1-0	Vanderbilt	3-5-5
Louisiana-Lafayette	0-0	Virginia	0-1
LSU	6-8-4	Wake Forest	0-1
Marshall	1-0	Washington	0-1
McNeese State	1-0	Western Kentucky	0-1-1
Memphis	8-6-1	William Carey	0-1
Mercer	1-0	Wright State	0-0-1
Miami (Fla.)	0-1-1	Wyoming	1-0-1
Middle Tennessee	4-1		
Mississippi State	10-5-3		
Missouri	2-0		
Missouri State (SW)	5-0		
Mobile	1-0		
Morehead State	1-0		
New Mexico	1-2		
Northeastern	1-0		
Northern Arizona	2-0		
Northwestern State	2-0		

* Bold indicates 2012 opponents

ALL-TIME COACHING RECORDS



Matthew Mott
2010-Present

Year	Overall	SEC	Postseason
2010	7-9-4	3-5-3	-
2011	8-10-1	4-7	-
Totals	15-19-5	7-12-3	-



Steve Holeman
1995-2009

Year	Overall	SEC	Postseason
1995	6-12-0	0-8-0	-
1996	9-9-1	1-7-0	-
1997	11-9-0	4-4-0	SEC 1st Round
1998	9-7-2	3-5-0	SEC 1st Round
1999	14-9-0	4-5-0	SEC Champ. Gm.
2000	13-6-1	5-3-1	SEC 1st Round
2001	10-10-1	4-5-0	SEC Semifinals
2002	13-5-2	5-3-1	SEC 1st Round NCAA 1st Round
2003	15-6-2	4-3-2	SEC Semifinals NCAA 2nd Round
2004	9-10-2	4-5-2	SEC Semifinals
2005	14-5-2	8-1-2	SEC 1st Round NCAA 1st Round
2006	8-7-5	4-2-5	SEC 1st Round
2007	7-8-5	4-4-3	SEC 1st Round
2008	7-10-3	5-5-1	SEC 1st Round
2009	13-6-2	7-7-2	SEC 1st Round NCAA 1st Round
Totals	158-119-28	62-62-19	5-12 (SEC) 1-4 (NCAA)

PROGRAM RECORDS

Overall Record: 173-138-33 (15 seasons)

Southeastern Conference Record: 69-74-22

Non-Conference Record: 100-54-11

SEC Tournament Record: 5-13 (13 appearances)

NCAA Tournament Record: 1-4 (4 appearances)

Record at Ole Miss Soccer Stadium: 90-38-15

Television Record: 7-12-4

Overtime Record: 16-22-33

Record vs. Ranked Teams: 11-37-5

MISCELLANEOUS SEASON RECORDS

Most Games.....	23 - 2003, 1999	Longest Road Non-Winning Streak	6 - 2 Times
Most Wins	15 - 2003	Longest Road Losing Streak.....	5 - 4 Times
Fewest Wins.....	6 - 1995	Most Goals.....	59 - 1996
Most Losses	12 - 1995	Fewest Goals	21 - 2007
Fewest Losses.....	5 - 2005, 2002	Most Assists	54 - 1996
Most Ties.....	5 - 2007, 2006	Fewest Assists.....	13 - 2007
Fewest Ties.....	0 - 3 Times	Most Points.....	172 - 1996
Most SEC Wins	8 - 2005	Fewest Points	55 - 2007
Highest Win/Loss Pct.....	.714 - 2005	Most Shots	420 - 2003
Lowest Win/Loss Pct.....	.333 - 1995	Fewest Shots	236 - 1995
Longest Winning Streak.....	9 - 2000	Most Saves	129 - 1995
Longest Non-Losing Streak.....	9 - 2005, 2002, 2000	Fewest Saves.....	69 - 2007
Longest Non-Winning Streak.....	8 - 1998	Most Corner Kicks	120 - 1999
Longest Losing Streak	4 - 5 Times	Fewest Corner Kicks.....	68 - 1995
Longest SEC Winning Streak.....	7 - 2005	Most Shutouts	12 - 2005, 2003
Longest Home Winning Streak	9 - 2003	Fewest Shutouts.....	2 - 1996
Longest Home Non-Losing Streak.....	9 - 2005, 2003	Most SEC Shutouts	8 - 2005
Longest Home Non-Winning Streak	4 - 1995	Consecutive Shutouts.....	5 - 2009
Longest Home Losing Streak.....	4 - 1995	Consecutive Games Being Shut Out.....	4 - 2006
Longest Road Winning Streak	4 - 2005	Longest Time Holding An Opponent Scoreless.....	455 minutes - 2012
Longest Road Non-Losing Streak.....	6 - 2009		



The 2011 team holds the program record for the longest consecutive time for holding an opponent scoreless as the team held opponents scoreless for the first 455 minutes of the 2011 season.

VERSUS CONFERENCES

America East	1-0	Mid-American	2-0
Atlantic 10	2-1	Midwestern Collegiate	1-0
Atlantic Coast.....	0-7-2	Mountain West	3-4-2
Atlantic Sun	5-0	NAIA	3-3
BIG EAST	0-1-1	Ohio Valley.....	5-0-1
Big Sky	3-0	Pac-12.....	0-2
Big 12.....	14-7	Southern	2-0
Colonial Athletic	0-1	Southland	5-0
Conference USA	26-14-2	Southwestern Athletic	3-0
Horizon	1-0	Sun Belt.....	9-3
Independents.....	3-1	Trans American Athletic	5-0
Metro Atlantic Athletic	0-1	West Coast.....	0-3-1
Missouri Valley.....	8-1	Western Athletic	0-1-1

REBEL HONOR ROLL

WOMEN'S PRO SOCCER DRAFT

2010 Danielle Johnson - 4th Round (35th overall)
 New Jersey Sky Blue FC

WUSA DRAFT

2001 Jennifer Soileau - 3rd Round
 Philadelphia Charge

SOCCER BUZZ ALL-AMERICA

2005 Chrissy Strini - HM

SOCCER AMERICA FRESHMAN ALL-AMERICA

2005 Jennifer Hance - Second Team

SOCCER BUZZ FRESHMAN ALL-AMERICA

2002 Kelly Renie - First Team
 2005 Jennifer Hance - Second Team
 Christine Breaux - Third Team
 2006 Danielle Johnson - Third Team

SOCCER BUZZ FRESHMAN OF THE YEAR FINALIST

2005 Jennifer Hance

NSCAA ALL-REGION

1998 Jennifer Soileau - Third Team
 1999 Jennifer Soileau - Second Team
 2000 Jennifer Soileau - First Team
 Kristin Chapman - Third Team
 2001 Kristin Chapman - Second Team
 2002 Kristal Menard - Second Team
 Kelly Renie - Second Team
 2003 Kristal Menard - First Team
 Amy Sample - Second Team
 2004 Kristal Menard - Third Team
 2005 Jennifer Hance - First Team
 Chrissy Strini - Second Team
 2006 Chrissy Strini - Third Team
 2008 Danielle Johnson - Third Team
 Jennifer Hance - Third Team
 2009 Danielle Johnson - First Team
 Hannah Weatherly - First Team
 2011 Alix Hildal - Third Team

SOCCER BUZZ ALL-CENTRAL REGION

1996 Leah Rutledge - Third Team
 1999 Jennifer Soileau - Second Team
 2000 Jennifer Soileau - First Team
 2001 Kristin Chapman - Second Team
 2002 Kristal Menard - First Team
 Kelly Renie - Second Team
 2003 Kristal Menard - First Team
 Amy Sample - First Team
 2004 Kristal Menard - Second Team
 2005 Chrissy Strini - First Team
 Jennifer Hance - Second Team
 Christine Breaux - Third Team
 2006 Chrissy Strini - Second Team
 Danielle Johnson - Third Team
 2007 Danielle Johnson - Second Team
 2008 Danielle Johnson - Third Team

SOCCER BUZZ CENTRAL REGION ALL-FRESHMAN

1999 Bridget Brooks
 2002 Kelly Renie
 2005 Christine Breaux, Jennifer Hance
 2006 Danielle Johnson

ALL-SEC

1996 Sarah Comeaux - Second Team
 1997 Sarah Wong - First Team
 1998 Jennifer Soileau - First Team
 1999 Jennifer Soileau - First Team
 2000 Jennifer Soileau - First Team
 Kristin Chapman - Second Team
 2001 Kristin Chapman - First Team
 2002 Kristal Menard - First Team
 Kelly Renie - First Team
 Kristin Chapman - HM
 Amy Sample - HM
 2003 Kristal Menard - First Team
 Brittany Gillespie - Second Team
 Amy Sample - Second Team
 2004 Kristal Menard - Second Team
 Brittney Potts - Second Team
 Lyndsey Williams - Second Team
 2005 Jennifer Hance - First Team
 Chrissy Strini - First Team
 2006 Chrissy Strini - First Team
 Jennifer Hance - Second Team
 Danielle Johnson - Second Team
 2007 Danielle Johnson - First Team
 Amy Bayles - Second Team
 2008 Danielle Johnson - First Team
 Christine Breaux - Second Team
 Jennifer Hance - Second Team
 2009 Danielle Johnson - First Team
 Hannah Weatherly - Second Team



Kelly Renie became the Rebels' first SEC Freshman of the Year and Freshman All-America selection when she scored 18 goals as a rookie in 2002.

2010 Alix Hildal - Second Team
 2011 Meredith Snow - Second Team
 Dylan Jordan - Second Team
 Alix Hildal - Second Team

SEC FRESHMAN OF THE YEAR

2002 Kelly Renie
 2005 Jennifer Hance

SEC ALL-FRESHMAN

2003 Elise Karlowicz, Brittney Potts
 2004 Ann Shelton
 2005 Christine Breaux, Jennifer Hance
 2006 Danielle Johnson
 2009 Arielle Cohen
 2010 Mandy McCalla

PRESEASON ALL-SEC

2007 Chrissy Strini
 2008 Danielle Johnson
 2009 Danielle Johnson
 2010 Taylor Cunningham, Meredith Snow

SOCCER AMERICA TEAM OF THE WEEK

1996 Sarah Comeaux - Oct 8; Nov. 5
 2002 Karen Hall - Sept. 25
 2005 Jennifer Hance - Sept. 8
 Amy Gill - Oct. 19
 2007 Chrissy Strini - Sept. 18
 Danielle Johnson - Oct. 9
 2009 Taylor Cunningham - Sept. 1
 Danielle Johnson - Oct. 13
 Alley Ronaldi - Oct. 20

SOCCER BUZZ TEAM OF THE WEEK

2005 Lyndsey Williams - Oct. 12
 Amy Gill - Oct. 19
 2006 Ann Shelton - Sept. 27
 2007 Chrissy Strini - Sept. 18
 2008 Danielle Johnson - Oct. 8

TOP DRAWER SOCCER TEAM OF THE WEEK

2005 Amy Gill - Oct. 19
 2006 Ann Shelton - Sept. 11
 Lyndsey Williams - Oct. 10
 2007 Chrissy Strini - Sept. 18
 2009 Dylan Jordan - Nov. 2

COLLEGE SOCCER 360 TEAM OF THE WEEK

2009 Abbie Curran - Oct. 6
 Danielle Johnson - Oct. 13

SEC PLAYER OF THE WEEK

1996 Sarah Comeaux - Sept. 9; Nov. 5
 1997 Jennifer Soileau - Oct. 27
 2000 Regan Scanlon - Sept. 5
 Jennifer Soileau - Sept. 19
 Bridget Brooks - Sept. 26
 2001 Melinda Smith - Oct. 16
 2002 Karen Hall - Sept. 23

2003 Brittany Gillespie (Def.) - Sept. 29; Oct. 13
 2005 Ann Shelton (Def.) - Sept. 19
 Lyndsey Williams (Def.) - Oct. 10
 Amy Gill (Off.) - Oct. 17
 2007 Chrissy Strini (Off.) - Sept. 17
 Danielle Johnson (Def.) - Oct. 8
 2008 Danielle Johnson (Def.) - Oct. 6
 Amy Bayles (Off.) - Oct. 27
 2009 Taylor Cunningham (Off.) - Aug. 31
 Danielle Johnson (Off.) - Oct. 12
 Alley Ronaldi (Def.) - Oct. 19
 2010 Dylan Jordan (Off.) - Sept. 20
 Alix Hildal (Off.) - Oct. 25
 2011 Alley Ronaldi - (Def.) - Aug. 29
 Meredith Snow - (Def.) - Oct. 24

SEC FRESHMAN OF THE WEEK

2005 Amanda Verkin - Aug. 29
 Jennifer Hance - Sept. 6
 2006 Hannah Weatherly - Sept. 11
 2008 Kelsey Breathitt - Nov. 3
 2010 Sarah Story - Sept. 20

ALL-TOURNAMENT TEAM

1997 Jennie Compton - Port City Classic
 Amy Lucas - Port City Classic
 Jennifer Soileau - Port City Classic
 1999 Birna Bjornsdottir - SEC
 Jennifer Soileau - SEC
 2000 Bridget Brooks - Kansas Jayhawk Classic
 Kristin Chapman - Kansas Jayhawk Classic;
 LSU Invitational (Defensive MVP)
 Jessica O'Neill - Kansas Jayhawk Classic
 Regan Scanlon - Kansas Jayhawk Classic;
 LSU Invitational
 Jennifer Soileau - Kansas Jayhawk Classic (MVP);
 LSU Invitational
 2001 Lindley Beckman - UAB Nike Classic
 Kristin Chapman - UAB Nike Classic; SEC



Lindley Beckman is the only two-time Academic All-American in program history.

. Michaela Collins - UAB Nike Classic (MVP)
 Kristal Menard - SEC
 Tiffany Weiss - UAB Nike Classic; SEC
 2002 Lindley Beckman - Ole Miss Invitational
 Kristal Menard - Ole Miss Invitational
 Kelly Renie - Ole Miss Invitational (MVP)
 Ramey Rush - Ole Miss Invitational
 2003 Elise Karłowicz - Nike Seminole Classic
 Kristal Menard - SEC
 Brittney Potts - Nike Seminole Classic
 2004 Lindley Beckman - SEC
 Kristal Menard - Charlotte Classic; SEC
 Kelly Renie - SEC
 2005 Jennifer Hance - UCF Invitational (MVP)
 2009 Kelsey Breathitt - Ole Miss Nike Invitational
 Arielle Cohen - Ole Miss Nike Invitational
 Taylor Cunningham - Ole Miss Nike Invitational (MVP)
 Meredith Snow - Ole Miss Nike Invitational

ESPN THE MAGAZINE/COSIDA ACADEMIC ALL-AMERICA

2000 Sara Schaubberger - Third Team
 2003 Lindley Beckman - First Team
 Amy Sample - Second Team
 2004 Lindley Beckman - First Team
 2011 Dylan Jordan - Third Team

NSCAA/ADIDAS SCHOLAR ALL-AMERICA

2000 Jessica O'Neill - Second Team
 Jennifer Soileau - Second Team
 2003 Kristal Menard - Second Team
 2009 Danielle Johnson - Second Team

SEC SCHOLAR-ATHLETE OF THE YEAR

2006 Lyndsey Williams
 (Shared with Tennessee's Ali Christoph)

SEC POST-GRADUATE AWARD

2000 Brooke Riley - Community Service
 2005 Lindley Beckman - Scholar-Athlete
 2006 Hillary Beckman - Scholar-Athlete
 2008 Jennifer Hance - Community Service
 2009 Danielle Johnson - Scholar-Athlete

UM HALL OF FAME

2007 Ashley Ferree

UM TAYLOR MEDAL

2007 Ashley Ferree

UM CROSSING THE LINES

2008 Cori Mehan

UM EUGENIA CONNER AWARD

2000 Brooke Riley
 2009 Danielle Johnson (co-recipient)

ESPN THE MAGAZINE/COSIDA ACADEMIC ALL-DISTRICT VI

1999 Sara Schaubberger - Second Team
 2000 Sara Schaubberger - First Team (Top Vote Getter)
 2002 Ramey Rush - First Team
 Leigh Barrow - Second Team

. Kristin Chapman - Second Team
 2003 Lindley Beckman - First Team
 Brittany Gillespie - First Team
 Amy Sample - First Team
 Kristal Menard - Second Team
 Ramey Rush - Second Team
 2004 Lindley Beckman - First Team
 Leigh Barrow - Second Team
 Lyndsey Williams - Second Team
 2005 Lyndsey Williams - First Team
 Ashley Ferree - Second Team
 Ann Shelton - Second Team
 Chrissy Strini - Second Team
 2006 Ann Shelton - Second Team
 Chrissy Strini - Second Team
 Lyndsey Williams - Second Team
 2007 Stacey Emmonds - Third Team
 Cori Mehan - Third Team
 Chrissy Strini - Third Team
 2008 Stacey Emmonds - Second Team
 Danielle Johnson - Third Team
 2009 Kelsey Breathitt - Second Team
 Danielle Johnson - Second Team
 Alley Ronaldi - Third Team
 Meredith Snow - Third Team
 2010 Dylan Jordan - First Team

NSCAA/ADIDAS ACADEMIC ALL-REGION

2000 Jessica O'Neill - First Team
 Jennifer Soileau - First Team
 Regan Scanlon - Second Team
 Sarah Wong - Second Team
 2005 Lyndsey Williams - HM
 2006 Chrissy Strini - Second Team
 Ann Shelton - HM
 Lyndsey Williams - HM
 2008 Danielle Johnson - Second Team
 Stacey Emmonds - HM

SEC ACADEMIC HONOR ROLL

1996 April Coss; Elizabeth Lee; Leah Rutledge;
 Jennie Schurr; Holly Strachan; Tammy Zegledi
 1997 Jenny Curry; Brooke Riley; Tammy Zegledi
 1998 Michelle Dubuc; Leigh Frisbee; Elizabeth Lee;
 Mary Ann Moss; Jessica O'Neill; Brooke Riley;
 Regan Scanlon; Sara Schaubberger;
 Jennifer Soileau; Sarah Wong; Tammy Zegledi
 1999 Dallas Bird; Birna Bjornsdottir; Leigh Frisbee;
 Amy Lucas; Jessica O'Neill; Brooke Riley;
 Regan Scanlon; Sara Schaubberger;
 Jennifer Soileau; Amaris Weeks; Sarah Wong
 2000 Dallas Bird; Megan Bowman; Michaela Collins;
 Jessica O'Neill; Anna Sanders; Regan Scanlon;
 Sara Schaubberger; Jennifer Soileau;
 Heather Wilemon-Hopson; Sarah Wong
 2001 Megan Bowman; Kristin Chapman; Jessica
 O'Neill; Anna Sanders; Regan Scanlon; Sara
 Schaubberger; Melinda Smith; Jennifer Soileau;
 Heather Wilemon-Hopson; Sarah Wong
 2002 Leigh Barrow; Lindley Beckman; Kristin
 Chapman; Erin Cooper; Erin Edmundson;
 Brittany Gillespie; Karen Hall; Kristal Menard;

HISTORY & RECORDS

.....Laura Price; Kelly Renie; Ramey Rush;
 Amy Sample; Anna Sanders; Tiffany Weiss;
 Heather Wilemon-Hopson
 2003 Leigh Barrow; Hillary Beckman; Lindley
 Beckman; Courtney Biddle; Erin Edmundson;
 Kelly Renie; Ashley Ferree (Freshman); Sammi
 Gould (Fr.); Karen Hall; Ashley Hanne; Kristal
 Menard; Mary Robinson (Fr.); Ramey Rush; Amy
 Sample; Ann Shelton (Fr.); Heather
 Wilemon-Hopson; Lyndsey Williams
 2004 Leigh Barrow; Hillary Beckman; Lindley
 Beckman; Ashley Ferree; Sammi Gould; Karen
 Hall; Ashley Hanne; Elise Karlowicz; Kelly Renie;
 Cori Mehan (Freshman); Kristal Menard; Mary
 Robinson; Ramey Rush; Ann Shelton; Chrissy
 Strini (Fr.); Megan Vickery (Fr.); Lyndsey Williams
 2005 Hillary Beckman; Christine Breaux (Freshman);
 Stacey Emmonds (Fr.); Ashley Ferree; Amy Gill;
 Elise Karlowicz; Cori Mehan; Caitlin Mizell (Fr.);
 Kelly Renie; Ann Shelton; Chrissy Strini;
 Brook Thebeau (Fr.); Amanda Verkin (Fr.);
 Megan Vickery; Lyndsey Williams
 2006 Christine Breaux; Stacey Emmonds; Ashley
 Ferree; Amy Gill; Danielle Johnson (Freshman);
 Elise Karlowicz; Cori Mehan; Ann Shelton;
 Chrissy Strini; Perryn Tyler (Fr.); Amanda Verkin;
 Megan Vickery; Hannah Weatherly (Fr.);
 Lyndsey Williams
 2007 Amy Bayles; Mallory Coleman; Lily Crabtree
 (Freshman); Erin Downing (Fr.); Stacey
 Emmonds; Amy Gill; Laura Hall (Fr.); Danielle
 Johnson; Christine Liberto; Cori Mehan; Ann

..... Shelton; Chrissy Strini; Amanda Verkin;
 Megan Vickery; Hannah Weatherly
 2008 Amy Bayles; Katie Breathitt (Freshman);
 Kelsey Breathitt (Fr.); Mallory Coleman; Lily Crabtree;
 Abbie Curran (Fr.); Erin Downing; Stacey Emmonds;
 Jennifer Hance; Danielle Johnson; Alley Ronaldi (Fr.);
 Meredith Snow (Fr.); Jenna Strother (Fr.); Amanda
 Verkin; Megan Vickery; Hannah Weatherly
 2009 Katie Breathitt; Kelsey Breathitt;
 Lily Crabtree; Taylor Cunningham; Abbie Curran;
 Danielle Johnson; Lacy Key (Fr.); Katie Lowder (Fr.);
 Alley Ronaldi; Alyssa Smith (Fr.); Meredith Snow;
 Jenna Strother; Brittany Vanderburg (Fr.);
 Hannah Weatherly
 2010 Kelsey Breathitt; Maddie Cunningham (Fr.);
 Abbie Curran; Alix Hildal; Erin Emerson (Fr.);
 Dylan Jordan; Kendyl Mygatt; Alley Ronaldi;
 Meredith Snow; Jenna Strother; Morgan Zigelsky (Fr.)
 2011 Abbie Curran; Erin Emerson;
 Chelsea Heimann; Alix Hildal; Dylan Jordan;
 Lacy Key; Mandy McCalla; Kelly McCromick; (Fr.)
 Kendyl Mygatt; Meghan O'Rourke; Alley Ronaldi;
 Virginia Seiler (Fr.) Meredith Snow; Jenna Strother

2008 Jennifer Hance
 2009 Danielle Johnson
 2010 Taylor Cunningham
 2011 Alley Ronaldi

SEC COMMUNITY SERVICE TEAM

1998 Michelle Dubuc
 2000 Sara Schaubberger
 2003 Heather Lea Hopson
 2004 Leigh Barrow
 2005 Ashley Ferree
 2006 Cori Mehan
 2007 Cori Mehan

FOUR-TIME ALL-SEC



DANIELLE JOHNSON
 Defender/Midfielder (2006-09)

THREE-TIME ALL-SEC



JENNIFER SOILEAU
 Midfielder (1997-2000)



KRISTIN CHAPMAN
 Defender (2000-02)



KRISTAL MENARD
 Midfielder (2001-04)



JENNIFER HANCE
 Midfielder (2005-08)

LETTERWINNERS

— B —

Leigh Barrow (Guntersville, Ala.) 2001-02-03-04
Bernadette Bartlett (Miami, Fla.) 2003
Amy Bayles (Florence, Ala.) 2005-06-07-08
Hillary Beckman (Anchorage, Ky.) 2002-03-04-05
Lindley Beckman (Anchorage, Ky.) 2001-02-03-04
Courtney Biddle (Pittsburgh, Pa.) 1999-00-01, 2003
Dallas Bird (Tulsa, Okla.) 1998, 2000
Birna Bjornsdottir (Reykjavik, Iceland) 1997-98-99
Jennifer Blackwell (Cincinnati, Ohio) 1995
Megan Bowman (Lawrenceville, Ga.) 1999-00-01
Katie Breathitt (Lexington, Ky.) 2009
Kelsey Breathitt (Lexington, Ky.) 2008-09
Christine Breaux (Gonzales, La.) 2005-06-07-08
Bridget Brooks (Shreveport, La.) 1999-00
Austin Brown (Lucaledale, Miss.) 2005-06-07-08
Emily Brown (Germantown, Tenn.) 2003

— C —

Janet Callahan (Pensacola, Fla.) 1996
Amanda Carpenter (Prairie Village, Kan.) 1997
Kristin Chapman (Vicksburg, Miss.) 2000-01-02
Mary Louise Clawson (Houston, Texas) 2011
Arielle Cohen (Wellington, Fla.) 2009
Mallory Coleman (Clinton, Miss.) 2006-07-08-09
Michaela Collins (Lakeland, Fla.) 1999-00
Sarah Comeaux (Lafayette, La.) 1995-96
Jennie Compton (Boise, Idaho) 1997
Erin Cooper (Highlands Ranch, Colo.) 2000-01
April Coss (Randolph, N.J.) 1995-96
Lily Crabtree (Columbus, Ga.) 2008-09-10
Maddie Cunningham (Louisville, Ky.) 2010-11
Taylor Cunningham (Louisville, Ky.) 2007-08-09-10
Abbie Curran (Eagle, Idaho) 2008-09-10-11
Jenny Curry (Ft. Walton Beach, Fla.) 1996-97-98-99

— D —

Kate Davis (Greenwood, Miss.) 2010
Jade Davis (Charleston, S.C.) 2009
Jackie DeNova (Fort Benning, Ga.) 2006, 2008
Erin Downing (Stafford, Va.) 2007-08
Michelle Dubuc (Baton Rouge, La.) 1995-96-97-98
Kim Duff (Greensboro, N.C.) 2011

— E —

Erin Edmundson (Raleigh, N.C.) 2000-01-02-03
Erin Emerson (Fayetteville, Ga.) 2010-11
Stacey Emmonds (Mirfield, England) 2005-06-07-08

— F —

Ashley Ferree (Cordova, Tenn.) 2003-04-05-06
Leigh Frisbee (Lewisville, Texas) 1996-97-98-99

— G —

Nicole Gatewood (Irvine, Calif.) 1996
Caitlyn Gibson (Plano, Texas) 2000
Jennifer Gibson (Prospect, Ky.) 2000
Amy Gill (Loveland, Ohio) 2004-05-06-07
Brittany Gillespie (Modesto, Calif.) 2000-01-02-03
Sammi Gould (Germantown, Tenn.) 2003-04

— H —

Karen Hall (Southlake, Texas) 2001-02-03-04
Laura Hall (Greenwood, Miss.) 2007
Jennifer Hance (Sugar Land, Texas) 2005-06-07-08
Ashley Hanne (Franklin, Tenn.) 2002-03
Shellie Harmon (Metairie, La.) 2002
Chelsea Heimann (Arlington, Texas) 2010-11

Alix Hoidal (Cincinnati, Ohio) 2009-10-11
Kim Hobgood (North Palm Beach, Fla.) 2009-10
Liz Holder (Marietta, Ga.) 2001
Jessie Hrapmann (Mandeville, La.) 2006

— I —

Lisa Iantria (Etobicoke, Ontario) 1997

— J —

Brooke Johnson (Athens, Ga.) 2001
Danielle Johnson (Baton Rouge, La.) 2006-07-08-09
Dylan Jordan (Palmyra, Tenn.) 2009-10-11

— K —

Elise Karlowicz (Katy, Texas) 2003-04-05-06
Lacy Key (Noble, Okla.) 2010
Brittany King (Edmond, Okla.) 2009
Kelly Kreis (Bartlett, Tenn.) 1995

— L —

Elizabeth Lee (Collierville, Tenn.) 1995-96-97-98
Christine Liberto (Charlotte, N.C.) 2004-05-06-07
Sofia Lindell (Värmdö, Sweden) 2008
Katie Lowder (Brentwood, Tenn.) 2009
Amy Lucas (Tallahassee, Fla.) 1996-97-98-99

— M —

Ashley Martin (Baton Rouge, La.) 1998
Natalie Martt (Kenner, La.) 1996-97-98
Megan Mattei (Memphis, Tenn.) 2003
Emily Maxwell (Shreveport, La.) 1999
Mandy McCalla (Fayetteville, Ga.) 2010-11
Kelly McCormick (Laguna Niguel, Calif.) 2011
Aelish McCreary (Markham, Ontario) 1997-98
Cori Mehan (Cordova, Tenn.) 2004-05-06-07
Kristal Menard (Crestwood, Ky.) 2001-02-03-04
Courtney Messina (Plano, Texas) 2009-10
Lisa Mestayer (New Orleans, La.) 2002
Caitlin Mizell (Atlanta, Ga.) 2005-06
Jenni Moats (Highlands Ranch, Colo.) 2000
A'Shanae Monroe (McDonough, Ga.) 2010
Megan Morton (Auburndale, Fla.) 2002
Mary Ann Moss (Jackson, Miss.) 1997-98
Kendyl Mygatt (Marietta, Ga.) 2009-10-11

— N —

Charlotte Newell (New Orleans, La.) 1995
Ashley Newport (Maple Ridge, British Columbia) 1997
Ally Nikolaus (St. Louis, Mo.) 2010
Carrie Nobles (Germantown, Tenn.) 1995

— O —

Jessica O'Neill (Vancouver, B.C.) 1997-98-99-00
Megan O'Rourke (Peachtree City, Ga.) 2011

— P —

Emily Perkins (Nashville, Tenn.) 2009-10
Brittney Potts (Franklin, Tenn.) 2003-04-05-06
Laura Price (Memphis, Tenn.) 2001-02-03-04

— R —

Morgan Reichel (Hilton Head Island, S.C.) 2004-05-06-07
Emily Reid (McKinney, Texas) 2011
Kelly Renie (Carmel, Ind.) 2002, 2004-05-06
Mallory Rickert (Prosper, Texas) 2006-07
Brooke Riley (Gulfport, Miss.) 1996-97-98-99
Leslie Robichaux (Geismar, La.) 2005
Mary Robinson (Madison, Miss.) 2003-04

Denise Rogers (Monrovia, Md.) 1999-00
Alley Ronaldi (The Woodlands, Texas) 2008-09-10-11
Ramey Rush (Meridian, Miss.) 2001-02-03-04
Leah Rutledge (Chapel Hill, N.C.) 1995-96-97-98

— S —

Amy Sample (Crestwood, Ky.) 2000-01-02-03
Anna Sanders (Fayetteville, Ark.) 1999-00-01-02
Regan Scanlon (Pittsford, N.Y.) 1997-98-99-00
Sara Schauburger (Russellville, Ky.) 1997-98-99-00
Jennie Schurr (Fishers, Ind.) 1995-96
Virginia Seiler (Atlanta, Ga.) 2011
Ann Shelton (Tulahoma, Tenn.) 2004-05-06-07
Emily Sinovich (St. Louis, Mo.) 2011
Alyssa Smith (Pensacola Beach, Fla.) 2009
Melinda Smith (Tacoma, Wash.) 1998-99-00-01
Meredith Snow (Cincinnati, Ohio) 2008-09-10-11
Jennifer Soileau (Baton Rouge, La.) 1997-98-99-00
Rafaelle Souza (Salvador, Brazil) 2011
Sarah Story (Hoover, Ala.) 2010
Holly Strachan (Germantown, Tenn.) 1995-96
Chrissy Strini (Cordova, Tenn.) 2004-05-06-07
Jenna Strother (Auburn, Ala.) 2008-09-10-11

— T —

Aundrea Tauzin (Carencro, La.) 1995-96
Brook Thebeau (Charlotte, N.C.) 2005-06
Margaret Thomas (Benton, Ky.) 2011
Ashley Thompson (Bradenton, Fla.) 1998-99
Perryn Tyler (Brandon, Miss.) 2006-07

— U —

Mary Katherine Ulmer (Jackson, Miss.) 2001

— V —

Brittany Vanderburg (Hoover, Ala.) 2009
Amanda Verkin (Sugar Land, Texas) 2005-06-07-08
Megan Vickery (Dallas, Texas) 2004-05, 2007-08

— W —

Lindsey Walter (Laguna Niguel, Calif.) 2010
Hannah Weatherly (Tupelo, Miss.) 2006-07-08-09
Amaris Weeks (Spring, Texas) 1998-99
Tiffany Weiss (Frisco, Texas) 2000-01
Kathryn White (Brandon, Miss.) 2002
Mary Bailey Wickham (Columbus, Ga.) 2009
Heather Wilemon-Hopson (Tupelo, Miss.) 2000-01-02-03
Lyndsey Williams (Germantown, Tenn.) 2002, 2004-05-06
Rachel Wokurka (O'Fallon, Mo.) 1995
Sarah Wong (Vancouver, B.C.) 1997-98-99-00
Tiffany Wright (Hendersonville, Tenn.) 1996

— Z —

Tammy Zegledi (Winter Park, Fla.) 1995-96-97-98
Morgan Zigelsky (Franklin, Tenn.) 2010

Bold indicates returning in 2012

REBEL STRENGTH & CONDITIONING

The mission of the Ole Miss Strength & Conditioning program is to support every varsity sport in the Department of Intercollegiate Athletics, by propelling each student-athlete to maximize their athletic potential for competitive success. This is accomplished by integrating practical research-based training methodologies to increase power, strength, speed, mobility, agility and efficiency of movement for sport-specific tasks. Equally important as improving these qualities, is conditioning every student-athlete to be able to repeat these sport-specific tasks at a frequency required for competitive success while concurrently developing the mental toughness required to compete in the SEC and the NCAA.

Ole Miss student-athletes train in three state-of-the-art facilities. With access to these exceptional resources, the strength & conditioning staff at Ole Miss have an abundance of tools at their disposal to ensure that every student-athlete is trained to compete at the highest level. To further enhance their level of preparedness, the student-athletes are educated in nutrition by Faculty from the University of Mississippi's Dietetics and Nutrition program, and are instructed in, and exposed to, various recovery strategies designed to ensure that they experience ongoing positive performance adaptations in response to their training program(s).

Assistant Strength & Conditioning Coach, Randall Dorvin, joined the Ole Miss Athletics staff in the Summer of 2011, and is responsible for the development and implementation of the annual training plan for Ole Miss women's soccer.



Randall Dorvin
Assistant Strength & Conditioning Coach



HEALTH AND SPORTS PERFORMANCE

Under the leadership of Athletics Director Ross Bjork, Ole Miss launched the unique and comprehensive Health and Sports Performance program in July 2012, which takes a holistic approach to providing optimal health care for the demands of elite student-athletes. Through a complete collaboration between all services provided in the Health and Sports Performance model, Ole Miss is ensured not only healthy student-athletes, but ones that can achieve peak performance. These services include strength and conditioning, athletic training, team physicians, physical therapy, massage therapy, sports psychologist and sports nutrition.

"Our team of Health and Sports Performance professionals strive to provide quality health and sports performance services based on the latest in health and strength training research," said Shannon Singletary, Senior Associate A.D. for Health and Sports Performance. "By doing this we hope to not only provide our student-athletes with a better chance of winning on the field but also give them an opportunity to lead a healthy lifestyle."

Ole Miss Health and Sports Performance has strong working relationships with student health services, local physicians and Baptist Memorial Hospital-North Mississippi, which is located just miles from the Oxford campus. The department also taps into its own University of Mississippi Medical Center in Jackson for world-class treatment from multiple specialties including orthopedics, neurology and cardiology.

Ole Miss' athletic trainers begin treatment and rehabilitation as early as 6 a.m. and are available until the last student-athlete is finished with practice or competition. There are currently six athletic training facilities on campus with the two main athletic training rooms located in the Starnes Athletic Training Center and the Indoor Practice Facility. In addition, there are four satellite athletic training rooms located in Tad Smith Coliseum,

Basketball Practice Facility, Gillom Sports Center and Oxford-University Stadium/Swayze Field.



Erica Wilburn
Soccer Athletic Trainer

The main athletic training rooms are stocked with equipment such as digital x-ray systems, stationary bikes, laser therapy equipment, therapeutic modalities, underwater treadmills and Biodex testing equipment. Each component is strategically designed to not only give the student-athletes the best care but also aid in returning them to competition as quickly and safely as possible.



ATHLETICS DEPARTMENT MISSION STATEMENT

The mission of the University of Mississippi Department of Intercollegiate Athletics is to advance the University's role as a major comprehensive institution of higher learning dedicated to teaching, research, and service. The Department will produce competitive and entertaining athletic teams, by recruiting qualified student-athletes, coaches and staff from diverse backgrounds, providing equal opportunities regardless of ethnicity or gender. The Department will prepare student-athletes to be productive members of society by assisting in their development of academic, athletic, social, and leadership skills within an environment which fosters integrity, sportsmanship, and emotional, physical, and mental well being.

Operating within the principles of sound fiscal management, the Department will

sponsor athletic teams which reflect the interest of the citizens of Mississippi and promote enthusiasm, financial support, cohesiveness, and loyalty within the University community. Demonstrating leadership in all decisions which impact the University, the Southeastern Conference, and the National Collegiate Athletics Association, the Department will conduct itself in an ethical and honest manner.

STUDENT-ATHLETE ACADEMIC SUPPORT

Ole Miss student-athletes not only have the opportunity to play in one of the best conferences in the nation, they also attend a university that is world-renowned for its academics.

Led by newly hired Senior Associate Athletics Director for Academic Support Derek Cowherd, the Office of Student-Athlete Academic Support is committed to helping all Ole Miss student-athletes achieve academic success. Cowherd is assisted by four assistant directors, five full-time academic counselors, three learning specialists, two interns and numerous tutors and academic mentors.

The mission of the Office of Student-Athlete Academic Support is to provide quality developmental and need-based programs to help student-athletes become independent and self-reliant learners. In an environment that promotes student development, the staff provides support for all student-athletes from the time they arrive on campus through graduation. The staff provides resources, experience and knowledge empowering each student-athlete to reach his/her academic, career and personal potential. The OSAAS staff pursues this mission by promoting academic success with integrity, strict adherence to university, SEC and NCAA rules, and a dedication to excellence.

The Ole Miss soccer program has a long history of academic success. The Rebels boast nine Academic All-America selections, including two-time first-team honoree Lindley Beckman (2003 and 2004) and 2009 NSCAA Scholar All-American Danielle Johnson. The Rebels have also been a staple of the NSCAA's Team Academic Award for their outstanding team GPAs over the years.

In addition to Johnson's Scholar All-America recognition in 2009, she was the Ole Miss nominee for the McWhorter Award and earned a postgraduate scholarship. In 2010, Dylan Jordan was named to the Academic All-District First Team and she was

named a third team Academic All-American in 2011. Four Rebels were named to the ESPN The Magazine/CoSIDA Academic All-District teams, including second-teamers Johnson and Kelsey Breathitt and third-team picks Alley Ronaldi and Meredith Snow.

The 2011 SEC Academic Honor Roll was filled with Rebels, including Abbie Curran, Erin Emerson, Chelsea Heimann, Alix Hildal, Dylan Jordan, Lacy Key, Mandy McCalla, Kelly McCromick, (Fr.), Kendyl Mygatt, Meghan O'Rourke, Alley Ronaldi, Virginia Seiler (Fr.) Meredith Snow and Jenna Strother.

Among all sports, Ole Miss had 133 student-athletes named to the SEC Academic Honor Rolls in 2011-12. With Ole Miss athletics taking its place amongst the best in the nation, the Student-Athlete Academic Support staff hopes that Rebel graduates of today have a great impact in the future of tomorrow.



Derek Cowherd
Senior Associate AD
for Academic Support



Abigail Drescher
Academic Counselor
(Soccer)

REBEL READY



Rebel Ready - CHAMPS Life Skills is a well-rounded program for student-athletes to develop individual skills necessary to lead successful lives and become leaders for our communities and nation.

The program consists of these five vital components:

- **The Commitment to Academic Excellence** is promoted through a full range of services that include orientation, advising, tutoring, academic skills training and the recognition of academic excellence.
- **The Commitment to Athletic Excellence** is developed by the department's 10 women's and eight men's intercollegiate sports teams. The sponsorship is based on equity and compliance to all University, NCAA and Southeastern Conference rules and regulations.

- **The Commitment to Career Development** is a joint effort of the Ole Miss Athletic Department and Career Center. The goal is to prepare student-athletes for their transition out of sports and into the career development process. Career development components of the program include special workshops and programs for student-athletes and a senior resume brochure.

- **The Commitment to Personal Development** is promoted through life skills and personal development seminars and sponsorship of the Student-Athlete Advisory Committee.

- **The Commitment to Service** is promoted—in conjunction with the University Counseling Center—through many community service projects throughout the year. The Ole Miss student-athletes are very involved in the community and the community service program continues to grow.

NCAA COMPLIANCE

BOOSTER

A representative of the institution's athletics interests (booster) is an individual, independent agency, corporate entity or other organization who is known to have been involved in promoting the institution's athletics programs, made financial contributions to the athletics department or booster organizations or provided benefits to enrolled student-athletes and/or their families. For example, you are a booster if you have donated to the QB Club, purchased season tickets or employed a student-athlete.

EXTRA BENEFIT?

An extra benefit is any special arrangement by an institutional employee or a booster to provide a student-athlete (or their family) a benefit that is not generally available to other University students or is not expressly authorized by the NCAA. Examples of extra benefits include tickets to sporting events/concerts, reduced cost housing, meals, discounts on services, use of a car, etc. Extra benefits will jeopardize a student-athlete's eligibility.

WHO IS A PROSPECT?

A prospect is a student who has started classes for the ninth grade or above (seventh grade for men's basketball), is attending prep school or junior college or who has withdrawn from a four-year college and plans to transfer. A prospect remains a prospect until they enroll and attend classes for a regular term (i.e. not summer) at the University. This means a prospect

remains a prospect even after verbally committing or signing a National Letter of Intent.

WHAT IS INSTITUTIONAL CONTROL?

Institutional control of athletics is a fundamental requirement of NCAA legislation. A University is required to educate boosters on NCAA rules and regulations and monitor the athletics program for adherence to those rules. The University is responsible for the actions of its alumni, boosters and fans. If you have any questions or concerns please contact our office at 662-915-1594.

For current NCAA news and rules follow us on Twitter @RebelCompliance or visit the Compliance web page at www.olemissports.com.

OLE MISS SOCCER STADIUM

The Ole Miss Soccer Stadium stands as a beacon for success on the Oxford campus. Since the complex was christened on Sept. 28, 1997, in a regionally televised game against Alabama, the Rebels have been victorious in nearly 70 percent of their home matches, posting an impressive 99-40-15 mark through 2011.

Prior to the 2011 season, a new playing surface was installed. A photo gallery and time-lapse video of the new sod installation can be found on the soccer facility page on OleMissSports.com. Helping to provide the perfect environment for collegiate soccer in 2006 was a brand new state-of-the-art scoreboard and color graphics message board. With seating for over 1,500 spectators, the stadium is located directly behind the Gillom Sports Center, which provides top-notch locker rooms for both teams, a team meeting area for the Rebels, a changing room for officials and the UM coaches' offices.

The 2002 season was a momentous one for Ole Miss Soccer Stadium, as it was not only the site of the SEC Tournament but also underwent a major facelift. A two-story brick building was constructed, supplying a three-room media area on the top floor and new concessions and restrooms on the bottom, facing the outside of the stadium. The new building, coupled with the bricking of the backside of the stands and landscaping all around the complex, give the Rebels one of the finest and most attractive soccer stadiums in the nation. The new construction concluded just prior to the SEC Tournament, which was also an overwhelming success. The Rebels' first-round match with Kentucky drew a crowd of 1,588 - the second largest in stadium history.



FACILITY RECORDS

SINGLE GAME - TEAM

Points:	35 - Ole Miss vs. Tenn.-Martin (9-6-98)
Goals:	12 - Ole Miss vs. Tenn.-Martin (9-6-98)
Assists:	11 - Ole Miss vs. Tenn.-Martin (9-6-98)
Shots:	46 - Ole Miss vs. Tenn. Tech (10-31-97)
Saves:	21 - SLU vs. Ole Miss (11-1-98)
Corner Kicks:	17 - Ole Miss vs. Tenn. Tech (10-31-97)
Fouls:	25 - Ole Miss vs. UTEP (9-28-01)

SINGLE GAME - INDIVIDUAL

Points:	7 - Five Players Tied
Goals:	3 - 10 Players Tied
Assists:	4 - Kendyl Mygatt vs. UALR (9-13-09)
	4 - Anna Sanders vs. Alabama A&M (9-26-01)
Shots:	16 - Jennifer Soileau vs. SLU (11-1-98)
Saves:	21 - Allison Holladay (SLU) (11-1-98)

TOP CROWDS

ATTEND.	OPPONENT	DATE
1,791	Mississippi State	Nov. 2, 2001
1,588	Kentucky (SEC Tourn.)	Nov. 7, 2002
1,421	Notre Dame	Aug. 27, 2006
1,212	Mississippi State	Oct. 28, 2011
1,141	Auburn	Oct. 19, 2003
1,133	LSU	Sept. 11, 1998
1,132	Florida	Oct. 14, 2011
1,089	Mississippi State	Oct. 28, 2005
1,060	Vanderbilt	Oct. 25, 2009
1,057	Auburn	Sept. 30, 2011
992	LSU	Oct. 4, 2002
971	Alabama	Oct. 12, 2001
968	Auburn	Sept. 27, 2009
965	Vanderbilt	Oct. 23, 2005
960	Florida	Oct. 16, 2005



GILLOM SPORTS CENTER AND COMPLEX

Since its opening in July 1997, the Gillom Sports Center has played a major role in the continued rise of Ole Miss women's athletics at regional and national levels of competition.

The building houses offices and locker rooms for the rifle, soccer, softball and volleyball programs, and contains three indoor tennis courts and a championship volleyball court.

Since 1997, the women's tennis program has made nine NCAA Tournament appearances, won the SEC Tournament once and claimed the SEC Western Division title twice. The Rebel soccer program has made four NCAA Tournament appearances and won three SEC West crowns. Volleyball has earned a pair of NCAA Tournament berths, and rifle finished sixth in the 2006 NCAA Championships.

On April 28, 2000, the complex was

dedicated as the Gillom Sports Center in honor of Lady Rebel basketball legends Peggie and Jennifer Gillom. The sisters Gillom are the top two scorers in the history of the program.

The facility, which was built on the University's intramural fields on Hathorn Road near Highway 6, is a metal structure with a brick front carrying the theme of several other campus edifices.

Other than the locker rooms and offices, the 54,142 square-foot building contains a training room, a laundry room, two visitors' locker rooms and equipment and team meeting rooms for soccer, softball and volleyball.

Recent upgrades to the soccer team meeting room have added stunning color photo displays, three flat-panel televisions and updated video editing equipment.

The volleyball championship court and

tennis courts have lower seating areas, and a mezzanine level that runs across the upper portion of the building for a higher perspective on matches. The volleyball court underwent major renovations for the 2010 season, arranging the space for an even better fan experience.

The 1,500-seat Ole Miss Soccer Stadium, which opened in 1997 and hosted the 2002 SEC Tournament, is located behind the multi-sport facility.

The recently renovated 1,000-seat softball complex is located across Hathorn Road from the facility. Featured at the complex is a state-of-the-art indoor hitting facility, one of the few such softball-only facilities in the nation. The softball complex hosted the 2011 SEC Softball Tournament.



FEDEX ACADEMIC SUPPORT CENTER

Since May 2007, Ole Miss student-athletes have benefitted tremendously from their first-class on-campus learning environment - the FedEx Student-Athlete Academic Support Center.

FedEx Corporation announced on April 14, 2005, a \$2.5 million gift over five years to the University of Mississippi to create such an elite academic support center for student-athletes.

The center provides state-of-the-art computer facilities and space for study halls and tutoring for men and women student-athletes, as well as additional classrooms for all students.

"FedEx has always been a strong supporter of educational initiatives at all levels," said Mike Glenn, executive vice president of marketing development and corporate communications. "This contribution to the University of Mississippi is an extension of our commitment to helping improve the academic resources available to students, and student-athletes in particular."

Glenn said FedEx and Ole Miss are committed to providing a strong academic foundation to enable students to reach their full potential.

"The FedEx Center is one of the best academic facilities in college athletics," said Athletics Director Ross Bjork. "It is the lifeblood of our student-athlete development and the chief recruiting tool for Ole Miss Athletics. Students come first in everything we do, and we cannot thank FedEx enough for their leadership and commitment."

The money was used to renovate a portion of the Starnes Athletic Center—which formerly housed football locker rooms, a weight room and training facilities—next to Vaught-Hemingway Stadium on All-American Drive. The 22,500-square-foot building now houses the Office of Student-Athlete Academic Support, including offices, conference rooms, 20 large and small group tutoring rooms, a large study area, a multi-media classroom, computer lab and 150-seat high-tech auditorium. The

project was completed in May 2007 with an approximate cost of \$5 million.

In accepting the FedEx gift, university officials said the new center provides an important link in the university's goal to compete at the highest level in every aspect of its intercollegiate programs.

"American public universities are the best in the world largely because of the generosity of American corporations," said then-UM Chancellor Robert Khayat. "FedEx sets the standard for philanthropy by which others are measured. In this case, Ole Miss student-athletes are the primary beneficiaries, but all our students will benefit and, as a result, our entire state benefits."

In addition to its latest gift to the University, FedEx supports several endowed scholarship programs, the Whitten Chair in Law, the Lott Leadership Institute, the William Winter Institute for Racial Reconciliation and William Faulkner's historic home, Rowan Oak.



STARNES ATHLETIC TRAINING CENTER

Every aspect of Ole Miss Athletics is geared toward the success of its student-athletes. The Michael S. Starnes Athletic Training Center provides a valuable role in the development and display of that success.

The multi-purpose Starnes Center has undergone many transformations through the years. It currently houses Ole Miss Sports Medicine, FCA and CHAMPS Life Skills headquarters and includes a 10,000-square-foot weight room and a sizeable memorabilia collection.

Formerly the Doc Knight Field House, the Training Center stands just north of Vaught-Hemingway Stadium and within walking distance of Tad Smith Coliseum, Swayze Field and the main athletics office complex.

The primary training room on the Ole Miss campus is used by several Rebel sports. The training area has four offices for the athletic training staff, room for at least 13 treatment tables, six taping stations and countless rehabilitation equipment. It also contains a wet room with a whirlpool that help make up an environment for top-notch care and injury prevention for Rebel athletes.

The facility extends to the east into a similar structure which holds a massive weight room, a lobby, a conference room and offices. Connected to the west end is the FedEx Academic Support Center, a state-of-the-art complex opened in May 2007.

Starnes, the building's benefactor, donated \$1 million toward the facility as part of an extensive \$2.5 million renovation in 1995. A 1968 Ole Miss graduate, Starnes is president of Tennessee California Express, Inc., a transportation company.

Much of the history and the many accolades of Rebel athletics are displayed in two rooms on the second floor of the Starnes Center that make up Hollingsworth-Manning Hall.

The larger room is divided into four zones, with the North Wing reserved to honor the nine Ole Miss Rebels in the College Football Hall of Fame. The East Wing spotlights the 46 Ole Miss first-team All-Americans as well as Hall of Fame Coach John Vaught and the legacy of Chucky Mullins. The West Wing is reserved for baseball, track,

tennis and golf All-Americans as well as Bruiser Kinard, the only player in Ole Miss history inducted into both the College and Professional Football Hall of Fame. The South Zone honors Ole Miss All-Americans in men's and women's basketball as well as C. M. "Tad" Smith, who played and coached at Ole Miss and also served as Athletics Director.

The smaller room of Hollingsworth-Manning Hall is devoted entirely to an impressive memorabilia collection from the family of Ole Miss legend Archie Manning, which includes items of all three sons, Cooper, Peyton and Eli. The focal points of the exhibit are Super Bowl MVP photos of both Peyton and Eli hoisting the Lombardi Trophy.

Dr. Jerry Hollingsworth, an Ole Miss alumnus and general practitioner in Ft. Walton Beach, Fla., joined forces with former Rebel quarterback Archie Manning to establish the recruitment/memorabilia center. It is faithfully maintained and updated by Langston Rogers, Special Assistant to the Athletics Director for History.



DR. DANIEL W. JONES | CHANCELLOR



From an early age, Dr. Daniel W. Jones knew his career aspirations revolved around medicine and leadership. And while a physician leading a comprehensive university isn't a common arrangement, Jones' appointment as the 16th chancellor of the University of Mississippi is no

surprise to anyone familiar with his record of leadership and achievements at the UM Medical Center in Jackson and the American Heart Association.

Jones became chancellor on July 1, 2009, and oversees the campuses in Oxford, Jackson, Southaven, Tupelo and Grenada.

Vice chancellor for health affairs and dean of the School of Medicine since 2003, Jones served as the Medical Center's chief executive officer, overseeing five schools and the health system. Under his leadership, UMMC restructured its clinical enterprise to create a more agile, market-responsive organization focused on quality, efficiency and clinical leadership. The work resulted in a turnaround in financial performance and selection as one

of the Thomson Top 100 Hospitals in America.

Jones' leadership team also expanded the Medical Center's commitment to minority scholarships, rural medicine and the elimination of health disparities. Enrollment of underrepresented medical students increased 80 percent in five years.

They also led a campaign that raised \$53 million, expanded the medical school's class size from 100 students to 120 students per class and reorganized the medical faculty clinical practice plan from 17 individual practice groups to a single, unified one, facilitating more efficient management and improved patient care.

Under his watch, the Medical Center's research enterprise has been reinvigorated with completion of the Arthur C. Guyton Research Center, acquisition of funding for a research park and increased research funding.

A native Mississippian, Jones graduated from Mississippi College in 1971, earned his M.D. in 1975 at UMMC and completed his residency in internal medicine there in 1978. He had a private practice in Laurel, then went to Korea as a medical missionary in 1985.

He returned to the UM Medical Center as a faculty member in 1992 and was named the school's Herbert G. Langford Professor of Medicine in 1998. He directed the

hypertension division and led many clinical studies funded by the National Heart, Lung and Blood Institute of the National Institutes of Health. He played a crucial role in the acquisition of funding from NHLBI to create the Jackson Heart Study and was its first principal investigator. As the only large scale study of cardiovascular risk factors in African-Americans, Jones had to overcome the understandable reluctance of African Americans to participate in research and to build consensus among the three participating institutions - Jackson State University, Tougaloo College and UMMC. Neither had ever collaborated in such a massive undertaking.

The chancellor began volunteering for the American Heart Association 20 years ago and became its national president in 2007-2008. He was one of the early voices in AHA leadership to call attention to the growing problem of childhood obesity and heart disease in women. He was AHA's national spokesperson on high blood pressure.

Jones is married to Lydia Channell Jones, also a Mississippi College graduate. They have two children, Jennifer Jones Flechas of Oxford and Jason Jones of Clinton.

ATHLETICS COMMITTEE



Dr. Ron Rychlak
Chairman



William Berry
University
Faculty



Larry H. Bryan
Alumni
President-Elect



Kimbrey Dandridge
ASB
President



Dr. J. David Duncan
Medical School



Tim Ellis
M-Club
Representative



Rose J. Flenorl
At-Large
Member



Mark Garneau
University
Staff



T. Michael Glenn
Alumni
Representative



Dr. Laurel Lambert
University
Faculty



Sam Lane
Alumni
Representative



Richard Noble
Alumni President



Dr. Brice Noonan
University
Faculty



Dr. Jason Ritchie
University
Faculty



Lee Tyner
University
Attorney



Dr. Ethel Young-Minor
University
Faculty

PAST ATHLETICS COMMITTEE CHAIRMEN



Judge William
Hemingway
1920s-37



Dr. T.A.
Bickerstaff
1937-72



Dr. Richard Keye
1972-77



Dr. Parham
Williams
1978-83



Dr. Max Williams
1983-97



Dr. Robert
Weems
1997-2007

ROSS BJORK | ATHLETICS DIRECTOR



Ross Bjork was announced on March 21, 2012 as the seventh full-time Director of Athletics at Ole Miss. Bjork, 39, arrives in Oxford as the youngest AD among BCS schools and comes off a successful stint in that post at Western Kentucky University.

Bjork has set the tone early in his Ole Miss tenure, hiring two of the country's top rising coaches in

their respective sports in Adrian Wiggins (women's basketball) and Brian O'Neal (track and field) in just the first two months on the job. He also appointed three executive level administrators for external relations, academic support and facilities/game operations.

The external relations post was a new umbrella position at the center of Bjork's reorganization of that area of Ole Miss Athletics, including the UMAA Foundation, ticket operations, marketing and communications and the relationship with Ole Miss Sports Properties. He also created the unit for Health and Sports Performance, which combined sports medicine, strength and conditioning, nutrition and counseling services and added a local orthopedic sports medicine component that will provide primary sports medicine care for all student-athletes.

Bjork's vision in facilities has resulted in a development plan for the Indoor Practice Facility. New projects will begin in the fall and include a full service dining facility, football team meeting room, player lounge and visuals throughout the complex.

Bjork's first full week at the post was spent on the Rebel Road Trip, a six-day, 16-stop tour of the region that served to unite the Rebel fanbase. He carried that momentum into the launch of a major sales campaign for football season tickets, which included television and radio advertising, billboards, internet marketing and a new outbound telemarketing call center.

At WKU, Bjork spent significant time with all head coaches to evaluate and understand the necessary ingredients it takes for each sport to reach their maximum potential athletically and academically. He oversaw an extensive search process that resulted in Matt Myers being named WKU's new head baseball coach in July of 2011, and groundbreaking is anticipated in the summer of 2012 for major facility upgrades for WKU's tennis and track and field programs.

After Bjork made a midseason coaching change, the Hilltopper men's basketball team went on to capture the 2012 Sun Belt Conference Tournament title and advanced to the second round of the NCAA Tournament. Women's Volleyball won the conference regular season and tournament in 2011 and reached the NCAA tournament each of the last two years, while men's and women's cross country each won conference team titles in 2011. Women's swimmer Claire Donahue finished second in the nation in the 100 yard butterfly, the highest finish in the program's history, and then won a pair of gold medals at the 2011 Pan American Games to become the only WKU athlete to ever claim Pan Am gold.

WKU's football program posted the greatest one-season improvement in conference wins in the history of the Sun Belt in posting a 7-1 league mark and second-place conference finish. WKU football also signed the conference's top recruiting class each of the last two seasons. WKU's soccer program also reached the Sun Belt Conference tournament championship game in 2011 before falling in overtime in their bid to achieve the program's first ever NCAA Tournament berth.

Operating at full speed immediately after being hired at WKU, Bjork immediately created full time coaching positions for both men's and women's golf, implemented a strategic budgeting process, started a master facility plan, restructured several key administrative units and created a new mission statement and core values to guide the athletics program. He also led the "Toppers on Tour" caravan each summer, in which coaches and administrators from the WKU athletic department visit six cities outside of the Bowling Green area in a 19-day span covering over 1,000 total miles. His

team also launched the Power of One membership campaign to accelerate growth for the Hilltopper Athletic Foundation and a new telemarketing program for ticket sales also saw immediate success in new customers for WKU Athletics.

Bjork placed a high priority on academic success at WKU and led the creation of a comprehensive academic retention plan for the athletics department, which is geared to proactively impact all incoming student-athletes. Each of WKU's men's and women's athletic teams exceeded the NCAA required 925 Academic Progress Report Rate (APR), and WKU had more individuals honored for their academic achievements by the Sun Belt Conference than any other institution in 2011-12. For the first time in program history, the overall cumulative average GPA was over 3.0 for all 391 student-athletes and 228 maintained a cumulative GPA of 3.0 or higher. Ten of the university's 15 athletic programs posted a cumulative team GPA of 3.0 or better.

The youngest athletics director of the 120 NCAA FBS programs when hired at WKU, Bjork has an extensive career in intercollegiate athletics with two decades of experience as an administrator and student-athlete, having worked on the senior staffs at UCLA, the University of Miami and the University of Missouri. He began his administrative career at WKU as an Assistant Development Coordinator in 1996-97.

Bjork has also served as Campus Recreation Graduate Assistant and Athletic Department Volunteer at Western Illinois University, Marketing Intern for the University of Tulsa, Front Office Intern for the Albuquerque Dukes and Student Volunteer for Athletics at Emporia State University.

Bjork is a native of Dodge City, Kan., and received his bachelor's degree in recreation administration from Emporia State University in 1995 where he was a two-year starter at fullback. He earned a master's degree in athletic administration from Western Illinois University in December 1996. Bjork is respected nationally by his peers and is Past-President of the National Association of Athletic Development Directors (NAADD). He and his wife, Sonya, have two boys: Payton (6) and Paxton (1).

ATHLETICS LEADERSHIP



John Hartwell
Senior Executive
Associate AD/
COO UMAA
Foundation



Stephen Ponder
Senior Executive
Associate AD for
External Relations



Lynnette Johnson
Executive
Associate AD/
Senior Woman
Administrator



Matt Ball
Senior Associate AD
for Compliance



Derek Cowherd
Senior Associate AD
for Academic Support



Shannon Singletary
Senior Associate AD
for Health & Sports
Performance



Michael Thompson
Senior Associate AD
for Communications
& Marketing



Keith Carter
Associate AD
for Development/
Executive Director
UMAA Foundation



Julie Owen
Associate AD
for Compliance



Joe Swingle
Associate AD
for Facilities &
Game Operations



Joey Brent
Assistant AD
for Information
Technology



Kyle Campbell
Assistant AD
for Media &
Public Relations



Jamil Northcutt
Assistant AD
for Internal
Operations



Wesley Owen
Assistant AD
for Ticket
Operations



Angela Robinson
Assistant AD
for Finance



Micah Ginn
Director of
Creative Services



FRESHMEN

#0 - EMILY WILBER, #2 - SAMANTHA SANDERS,
#5 - GEORGIA RUSSELL, #7 - BETHANY BUNKER,
#8 - MADDIE FRIEDMANN, #9 - SYDNEY EDDY,
#10 - BROOKE THEOBALD, #14 - SARA COLEMAN,
#15 - JESSICA HISKEY, #20 - OLIVIA HARRISON,
#22 - JENNIFER MILLER



SOPHOMORES

#1 - KELLY McCORMICK, #16 - MARY LOUISE CLAWSON,
#19 - VIRGINIA SEILER, #28 - MARGARET THOMAS



JUNIORS

#3 - ERIN EMERSON, #6 - RAFAELLE SOUZA,
#11 - EMILY REID, #17 - MADDIE CUNNINGHAM,
#21 - MANDY McCALLA, #26 - KIM DUFF,
#31 - BRIANNA SUPULSKI



SENIORS

#4 - ALIX HILDAL, #12 - MEGHAN O'ROURKE,
#13 - EMILY SINOVIK



RAFAELLE SOUZA
JR - F

MEGHAN O'ROURKE
SR - MF

KELLY McCORMICK
SO - GK

HOME SCHEDULE
AUG. 17 - SAINT LOUIS 7PM
AUG. 26 - LOUISIANA-LAFAYETTE 1PM
AUG. 31 - ARKANSAS-LITTLE ROCK 7PM

SEPT. 2 - TEXAS TECH 7PM
SEPT. 7 - UAB 7:30PM
SEPT. 14 - ARKANSAS 7PM
SEPT. 16 - TEXAS A&M 1PM

OCT. 5 - GEORGIA 7PM
OCT. 7 - KENTUCKY 1PM
OCT. 19 - LSU 7:30PM
OCT. 21 - TENNESSEE 1PM