

1927

Itinerary of American Institute of Accountants en route to and from annual meeting at Del Monte, California, September 19-22, 1927

American Institute of Accountants. Meeting (1927 : Del Monte, Ca.)

Follow this and additional works at: https://egrove.olemiss.edu/acct_inst

Recommended Citation

American Institute of Accountants. Meeting (1927 : Del Monte, Ca.), "Itinerary of American Institute of Accountants en route to and from annual meeting at Del Monte, California, September 19-22, 1927" (1927). *Publications of Accounting Associations, Societies, and Institutes*. 14.

https://egrove.olemiss.edu/acct_inst/14

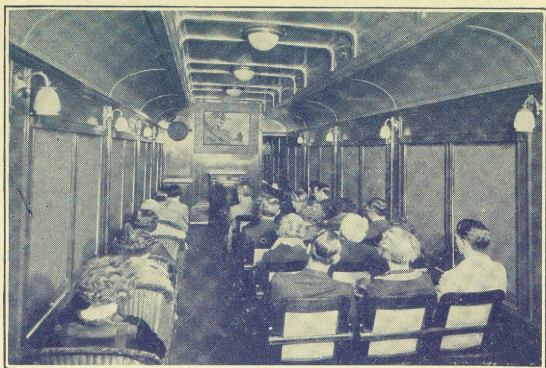
This Article is brought to you for free and open access by the Accounting Archive at eGrove. It has been accepted for inclusion in Publications of Accounting Associations, Societies, and Institutes by an authorized administrator of eGrove. For more information, please contact egrove@olemiss.edu.

ITINERARY
of
American Institute
of
Accountants



En route to and from
Annual Meeting
at
Del Monte, California
September 19-22
1927

Direction of
RAYMOND & WHITCOMB CO.



THE ENTERTAINMENT CAR—
RAYMOND-WHITCOMB LAND CRUISE TRAIN

This feature of the Liner has a diversity of uses.

THE ANNUAL MEETING of the AMERICAN INSTITUTE OF ACCOUNTANTS will be held at Del Monte, California, September 19-22, 1927, and it is expected that many members from all parts of the United States will take advantage of this opportunity to attend an Institute meeting and at the same time to see as much as possible of our western country.

There is a generally expressed wish that a special train should be chartered to enable members and their families to travel together from Chicago.

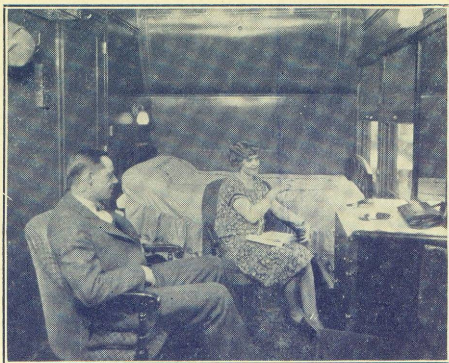
After careful inquiry it seems that the most desirable arrangements can be made through the Raymond & Whitcomb Company. The costs of the special facilities which this company can provide are practically the same as the costs of ordinary transportation. The experience of the company seems to assure a comprehensive attention to detail which should relieve members of many minor responsibilities and leave them free to make the most of the pleasures of the trip.

Accordingly, the Raymond & Whitcomb Company has been authorized to arrange a tour, if a sufficient number of participants can be obtained.

This little pamphlet is prepared by the Raymond & Whitcomb Company with the consent of officers of the Institute and we recommend that all who can attend the meeting take advantage of the plan proposed herein. It is hoped that all the available accommodations can be sold. Naturally, reservations will be made in order as received.

A. P. RICHARDSON,
Secretary.

WILLIAM H. WEST,
President.



THE BEDROOM CAR —
RAYMOND-WHITCOMB LAND CRUISE TRAIN

This car has rooms furnished with real beds, wardrobes, dressing tables, easy chairs, etc., with private bath attached.

SCHEDULE

Note: Times of arrival and departure in the following schedule are approximate. Slight revisions may be found necessary as arrangements are completed.

Trains suggested between eastern points and Chicago are those best serving the convenience of this particular party. Arrangements will be made for use of other trains for any who desire them.

Tuesday, Sept. 6—Leave New York via
New York Central 12.10 noon

Leave Boston via B. & A.	9.30 a.m.
Leave Worcester	10.40 a.m.
Leave Springfield	12.05 noon
New York and New England groups combine at Albany.	

Leave Albany	3.25 p.m.
Leave Buffalo	9.40 p.m.

Tuesday, Sept. 6—Leave Philadelphia via
B. & O. 11.38 a.m.

Leave Baltimore	1.47 p.m.
Leave Washington	3.00 p.m.
Leave Pittsburgh	9.30 p.m.



YELLOWSTONE NATIONAL PARK

Wednesday, Sept. 7—Leave Detroit 2.40 a.m.
Arrive Chicago via Michigan Central 8.00 a.m.

On arrival in Chicago special facilities will be provided to transfer the party to the Union Station.

Leave Chicago via Burlington Route 9.30 a.m.
The unique special train with facilities mentioned in this itinerary will start from Chicago and be at the service of members of the party until their arrival in Chicago on the return.

Thursday, Sept. 8—Arrive Winnipeg via Northern Pacific in the morning. For the balance of the day and evening the party will be guests of the Dominion Association of Chartered Accountants. Retire on board train which will be ready for occupancy after 10.00 p.m.

Friday, Sept. 9—Leave Winnipeg via Northern Pacific 1.00 a.m.

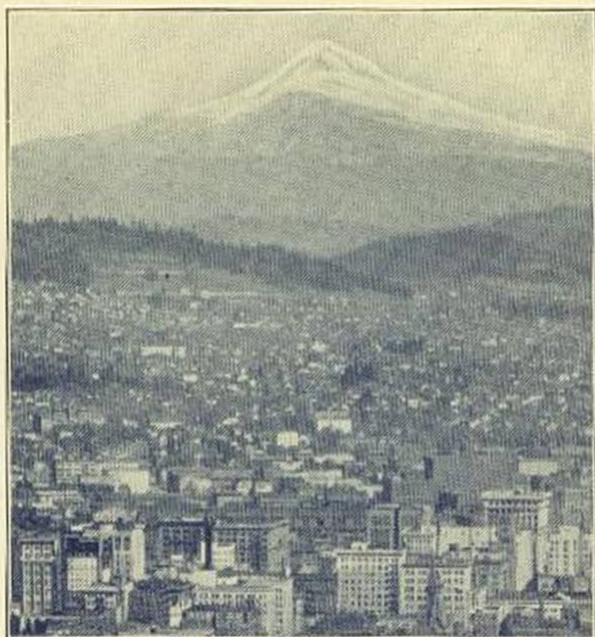
Saturday, Sept. 10—Arrive Cody 7.15 a.m.

From Cody members of the party will take complete tour of Yellowstone Park going in over the Cody road by way of Shoshone Canyon and Sylvan Pass, coming out by way of Gardiner Canyon, on the following schedule:

Leave Cody	9.20 a.m.
Luncheon at Sylvan Pass Lodge.	
Arrive Grand Canyon	5.22 p.m.
Accommodations at Canyon Hotel.	

Sunday, Sept. 11—Leave Grand Canyon 8.30 a.m.
By way of Norris Geyser Basin.

Arrive Old Faithful	12.12 noon
Accommodations at Old Faithful Inn.	



PORTLAND, OREGON

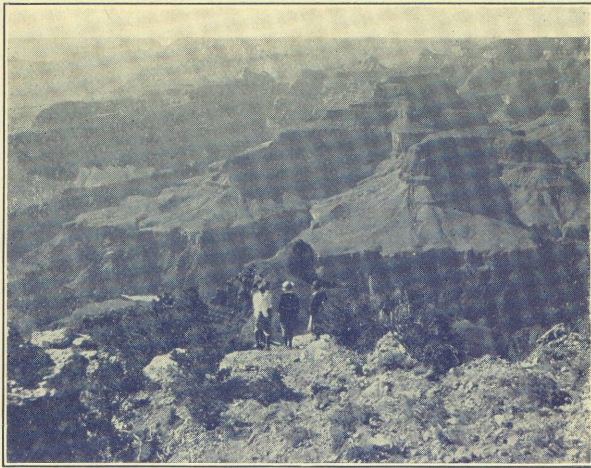
Guarded by stately and symmetrical Mt. Hood, Portland is one of the leading and most attractive cities of the Northwestern Empire.

Monday, Sept. 12 —Leave Old Faithful	9.00 a.m.
Arrive Yellowstone Lake	12.15 noon
Luncheon at Lake Hotel.	
Leave Yellowstone Lake	2.00 p.m.
Arrive Grand Canyon	4.00 p.m.
Accommodations at Canyon Hotel.	
Tuesday, Sept. 13 —Leave Grand Canyon	1.30 p.m.
By way of Dunraven Pass.	
Arriving Mammoth Hot Springs	4.48 p.m.
Dinner at Mammoth Hot Springs Hotel.	
Leave Mammoth Hot Springs about	7.30 p.m.
Wednesday, Sept. 14 —En route over Northern Pacific.	
In the afternoon a stop will be made at Spokane for several hours to allow time for drive around the city and possibly a dinner dance at the Davenport Hotel. Details to be announced on train.	
Thursday, Sept. 15 —Arrive Seattle via Northern Pacific.	9.00 a.m.
All day in Seattle.	
Leave Seattle via Northern Pacific	11.55 p.m.



ONE OF DEL MONTE'S 18-HOLE GOLF COURSES

Friday, Sept. 16 —Arrive Portland	7.00 a.m.
Train will be held at Portland two or three hours to allow members of the party who may wish to do so, time enough to drive around the city.	
Leave Portland via Southern Pacific	10.00 a.m.
Saturday, Sept. 17 —Arrive Oakland Pier	10.30 a.m.
Arrive San Francisco	11.00 a.m.
During the time the party is in San Francisco the train will be switched from Oakland Pier to the Third and Townsend Street Station, San Francisco.	
Sunday, Sept. 18 —Leave San Francisco via Southern Pacific from Third Street Station	8.00 p.m.
Arrive Del Monte	11.00 p.m.
Monday, Sept. 19	} In Del Monte.
Tuesday, Sept. 20	
Wednesday, Sept. 21	
Thursday, Sept. 22 —Leave Del Monte via Southern Pacific	9.00 p.m.
Friday, Sept. 23 —Arrive Los Angeles	7.00 a.m.
Balance of day in Los Angeles.	
Saturday, Sept. 24 —In Los Angeles.	
Sunday, Sept. 25 —In Los Angeles.	
Monday, Sept. 26 —Leave Los Angeles via Santa Fe	9.00 a.m.
Arrive Riverside	11.00 a.m.
Train will be held at Riverside long enough for members of party to take a drive around the city including Mount Rubidoux, and have lunch at Mission Inn.	
Leave Riverside via Santa Fe	2.00 p.m.



THE GRAND CANYON

Two hundred miles long, a mile in average depth and from 1000 feet wide at the bottom to 7-15 miles wide at the top, the Grand Canyon of the Colorado has no equal in the world as a natural spectacle.

Tuesday, Sept. 27—Arrive Grand Canyon 7.00 a.m.
All day at Grand Canyon.
Leave 8.15 p.m.

Wednesday, Sept. 28—En route. Brief stops in morning at a typical Indian pueblo and at Albuquerque, New Mexico.

Thursday, Sept. 29—Arrive Kansas City 4.00 p.m.
Leave via the Santa Fe. 6.00 p.m.

Friday, Sept. 30—Arrive Chicago 7.00 a.m.
On arrival at Chicago special train will be released. Members of party will be transferred to their respective stations. The New York and New England groups may leave on the following schedule:—

Friday, Sept. 30—Leave Chicago via Michigan Central from Central Station 10.00 a.m.
Arrive Detroit 4.14 p.m.
Arrive Buffalo 10.10 p.m.

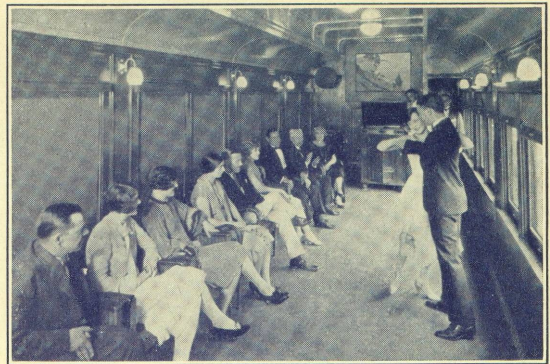
Saturday, Oct. 1—Arrive New York via New York Central 9.00 a.m.

Arrive Springfield 9.32 a.m.
Arrive Worcester 10.55 a.m.
Arrive Boston 12.00 noon

Those destined to points in Pennsylvania, Maryland, etc., may use the following:—

Friday, Sept. 30—Leave Chicago via the B. & O. from Grand Central Station at 1.00 p.m.

Saturday, Oct. 1—Arrive Washington 9.00 a.m.
Arrive Baltimore 10.00 a.m.
Arrive Philadelphia 12.08 noon



THE ENTERTAINMENT CAR— RAYMOND-WHITCOMB LAND CRUISE TRAIN

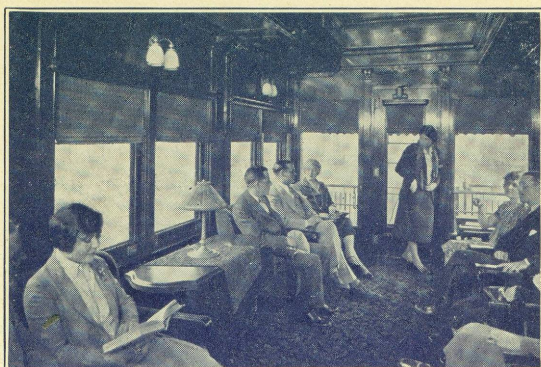
The Entertainment Car is perfectly adapted to dancing, among its many functions. After the "movie" show is over, the chairs may be moved aside to allow dancing to the strains of some famous jazz orchestra, heard on the new Orthophonic Victrola, or over the radio.

COST

Prices quoted are per person.

	Upper Berth	Lower Berth	Com-part-ment 2persons	Draw-ing Room 2persons	Draw-ing Room 3persons
Dist. of Columbia Washington	\$293.17	\$312.45	\$365.81	\$402.56	\$344.95
Illinois Chicago	239.82	255.80	302.41	332.41	284.80
Indiana Indianapolis	251.22	268.70	318.31	351.31	299.20
Maryland Baltimore	293.17	312.45	365.81	402.56	344.95
Massachusetts Boston	313.36	333.42	388.27	425.77	366.16
Michigan Detroit	257.22	274.70	324.31	357.31	305.20
New York Buffalo	274.62	292.86	343.96	379.21	324.60
New York City	317.84	337.42	391.53	427.53	369.42
Ohio Cincinnati	256.87	274.35	323.96	356.96	304.85
Cleveland	261.17	278.65	328.26	361.26	309.15
Pennsylvania Philadelphia	295.86	315.14	368.50	405.25	347.64
Pittsburgh	269.77	287.55	337.91	371.66	318.55

The additional cost of rooms with private bath on the train is \$55.00 per person if there are two in a room and \$39.00 per person if three are in a room.



THE OBSERVATION CAR —
 RAYMOND-WHITCOMB LAND CRUISE TRAIN

On the Land Cruise Train is a comfortable observation car, with easy chairs, writing table and sheltered open-air platform. The windows are broad and the view unobstructed.

Prices quoted above include all necessary railroad transportation and sleeping car accommodations for the entire round trip. Prices from points not shown and also for portions of the journey will be quoted on application.

Other items of expense are as follows:—

Meals	\$66.75
Yellowstone Park Tour	47.50
(Cost of Yellowstone Park Tour includes all transportation, meals and rooms without bath).	

Any who wish to do so may occupy the train at all stop-over points except Yellowstone Park and Del Monte without extra cost. Raymond & Whitcomb Company will be glad to reserve hotel accommodations at stop-over points for those who may wish them to do so.

The items of cost in addition to transportation and sleeping car space are not included in the prices named because of the probability of entertainment en route. Services of barber, valet, etc., are to be paid for by individuals availing themselves of such services. Prices do not include any hotel accommodations at Del Monte.

ROUTE

Those who prefer to make ticket arrangements with local agents should be sure that the tickets are routed from Chicago as follows:—

Chicago to St. Paul	Burlington Route
St. Paul via Winnipeg to Billings	Northern Pacific
Billings to Cody	Burlington Route
Gardiner to Seattle and Portland	Northern Pacific
Seattle to San Francisco	Southern Pacific
San Francisco to Los Angeles with side trip to Del Monte	Southern Pacific
Los Angeles via Grand Canyon to Chicago	Santa Fe