

ARTICLE

<https://doi.org/10.1038/s41467-019-12187-5>

OPEN

Alterations in ALK/ROS1/NTRK/MET drive a group of infantile hemispheric gliomas

Ana S. Guerreiro Stucklin  et al.[#]

Infant gliomas have paradoxical clinical behavior compared to those in children and adults: low-grade tumors have a higher mortality rate, while high-grade tumors have a better outcome. However, we have little understanding of their biology and therefore cannot explain this behavior nor what constitutes optimal clinical management. Here we report a comprehensive genetic analysis of an international cohort of clinically annotated infant gliomas, revealing 3 clinical subgroups. Group 1 tumors arise in the cerebral hemispheres and harbor alterations in the receptor tyrosine kinases *ALK*, *ROS1*, *NTRK* and *MET*. These are typically single-events and confer an intermediate outcome. Groups 2 and 3 gliomas harbor *RAS*/*MAPK* pathway mutations and arise in the hemispheres and midline, respectively. Group 2 tumors have excellent long-term survival, while group 3 tumors progress rapidly and do not respond well to chemoradiation. We conclude that infant gliomas comprise 3 subgroups, justifying the need for specialized therapeutic strategies.

Correspondence and requests for materials should be addressed to C.H. (email: cynthia.hawkins@sickkids.ca). [#]A full list of authors and their affiliations appears at the end of the paper.

Gliomas are the most common primary central nervous system (CNS) neoplasm and result in the highest tumor-associated morbidity and mortality in children and adults^{1,2}. Traditionally, gliomas are divided into low grade (LGG, WHO grades I–II) and high grade (HGG, WHO grades III–IV) based on their histological characteristics³. Molecularly, adult lower grade gliomas commonly harbor alterations in *IDH1/2* in association with *TP53* and *ATRX* mutations or *TERT* mutations and 1p/19q co-deletions⁴. In comparison, most childhood LGG are driven by *RAS/MAPK* activation—predominantly in the form of fusions or mutations involving the *BRAF* gene—and rarely undergo malignant transformation^{5–7}. In contrast, adult LGG rarely contain *RAS/MAPK* alterations⁸ and invariably transform to HGG over time⁹. Pediatric HGG are usually not the result of transformation from LGG and, in contrast to adult HGG, most commonly harbor recurrent mutations in the genes encoding histone H3.3 and H3.1^{10,11}.

In contrast to the abundance of genetic and clinical information now available for pediatric glioma, far less is known about the infant demographic (under 1 year of age), despite the incidence of CNS tumors being highest in this group¹. Although steady improvements in the overall outcome of childhood cancer have been observed globally, infants with brain tumors remain at high risk for early death after diagnosis, are less likely to be enrolled in clinical trials and are critically under-studied¹². Further, the association between tumor grade and outcome is less predictable in infants; infant LGG (iLGG) show a more aggressive course^{13–15}, while infant HGG (iHGG) have a better outcome^{16,17} when compared with older children and adolescents. As such, the classic treatment approaches for pediatric LGG (low dose chemotherapy) and HGG (surgery, radiation and alkylator-based chemotherapy) are often either ineffective or excessive, respectively. Therefore, clinicians caring for infants with gliomas are faced with the challenging task of treating an exceptionally vulnerable population of patients where the best treatment options remain ambiguous and data are scarce.

To address the lack of knowledge regarding the genetic underpinnings of infant gliomas, we assemble a multi-institutional, international collaborative taskforce to comprehensively characterize a large, clinically well-annotated cohort with follow-up data spanning three decades. We find that infant gliomas comprise three main subgroups: (1) hemispheric receptor tyrosine kinase (RTK)-driven tumors, including *ALK*, *ROS1*, *NTRK*, and *MET* fusions, which are enriched for HGG and have an intermediate clinical outcome, (2) hemispheric *RAS/MAPK*-driven tumors, which show excellent long-term survival with minimal clinical intervention post-surgery, and (3) midline *RAS/MAPK*-driven tumors, which are enriched for LGG with *BRAF* alterations and have a relatively poor outcome even after conventional chemotherapeutic approaches. Together the clinical and molecular features of each subgroup indicate age-specific mechanisms underlying tumor initiation. This suggests that updated clinical approaches are required to modernize treatment and improve the outcome of these infants.

Results

Infantile gliomas have paradoxical survival profiles. We assembled a multi-institutional infant cohort consisting of 171 samples from 150 patients diagnosed between 1986 and 2017. Histological review confirmed the diagnosis in 142/150 (94.7%) patients, of which 104 (73.2%) and 33 (23.2%) were LGG or HGG, respectively. Five cases (3.5%) displayed intermixed LGG and HGG features (Supplementary Fig. 1a, Supplementary Table 1). Young children with LGG have a worse survival when compared with older children^{13,18,19} and to clarify whether this

effect can be ascribed to the demographic <1 year of age, we compared the survival of our cohort with a cohort of older children (1–18 years, SickKids LGG cohort). iLGG had a significantly worse overall survival (OS) than pediatric LGG (pLGG) (10-year OS of 71.4% (60.8–83.3%) versus 91.6% (88.5–94.8) for iLGG vs pLGG, respectively; $p < 0.001$, log-rank test Supplementary Fig. 1b). In contrast, reports have suggested better survival of iHGG as compared with older children¹⁶. iHGG showed a significantly better overall survival as compared with children diagnosed between the ages of 1–18 years (SickKids HGG cohort, pHGG) with a 5-year OS of 54.5% (40.0–74.2%), vs 6.6% (2.4–18.5%), respectively ($p < 0.001$, log rank test, Supplementary Fig. 1c).

Molecular features of infantile glioma. For 118/142 (83.1%) patients, sufficient tumor tissue was available for molecular characterization. We utilized a tiered molecular profiling approach combining targeted single nucleotide variant (SNV) and fusion profiling, copy number arrays and transcriptome-wide discovery strategies suitable for archival samples (Fig. 1a). *RAS/MAPK* activating alterations were the most common events (56/118, 47.5%) and primarily consisted of *KIAA1549-BRAF* fusions (28/118, 23.7%) and *BRAFV600E* mutations (21/118, 17.8%) (Fig. 1b). Additional *RAS/MAPK* pathway alterations, such as *FGFR1* fusions (*FGFR1-TACCL1*, $n = 3$), *FGFR1*-tyrosine kinase duplications ((TKD), $n = 2$), *RAF1* fusion (*PML-RAF1*, $n = 1$), and *MYBL1* gain ($n = 1$) were also observed. Interestingly, *RAS/MAPK* activating events were exclusively seen in LGG and accounted for 73.6% (39/53) of alterations present in midline gliomas versus only 26.1% (17/65) of hemispheric gliomas (Fig. 1b, c). The second most common group of molecular events involved alterations in the RTK oncogenes *ALK*, *ROS1*, *NTRK*, or *MET* (30/118, 25.4%) (Fig. 1b). These events were almost exclusively observed in hemispheric tumors (29/30, 96.7%) and HGG (25/30, 83.3%) (Fig. 1b, c). *ALK*, *ROS1*, and *NTRK1/2/3* alterations led to the fusion of different 5' binding partners with the 3' end of the truncated RTK containing the tyrosine kinase domain (Fig. 2a). Interestingly, *PPP1CB-ALK* fusions were detected in a region of chromothripsis on chromosome 2p (Fig. 2b) and the two most common RTK fusions—*PPP1CB-ALK* and *CCDC88A-ALK*—were found in both LGG and HGG (Fig. 2c, d; Supplementary Fig. 2). In contrast, *NTRK1/2/3* and *MET* fusions were exclusively seen in HGG (Fig. 2e, f). No *IDH1R132H*, *H3K27M* or *H3G34R* mutations were detected in this cohort.

Activating *ALK* fusions are susceptible to targeted agents. Truncation of the extracellular ligand-binding domain with retention of the intracellular tyrosine kinase domain in the RTK-fusions identified suggests these are activating events (Fig. 2a). *CCDC88A-ALK* expressing immortalized normal human astrocytes (iNHA) (Supplementary Fig. 3a, b) showed increased proliferation in vitro ($p = 0.002$, student's t-test, Fig. 3a) and ERK1/2 activation (Fig. 3b). Cell viability was reduced in a dose-dependent manner when treated with *ALK*-inhibitors currently in pediatric clinical trials (Fig. 3c). iNHAs overexpressing *CCDC88A-ALK* or *PPP1CB-ALK* were tumorigenic in vivo with 100% penetrance (Fig. 3d, e), forming glial tumors with a high MIB-1 proliferative index, pseudopalisading necrosis, focal GFAP expression, lack of synaptophysin expression and *ALK* overexpression (Supplementary Fig. 3c, d).

Infantile gliomas comprise three subgroups. Analysis of the clinical features associated with each class of molecular alterations suggested that infant gliomas represent three distinct clinical/molecular groups: (1) Hemispheric, RTK-driven,

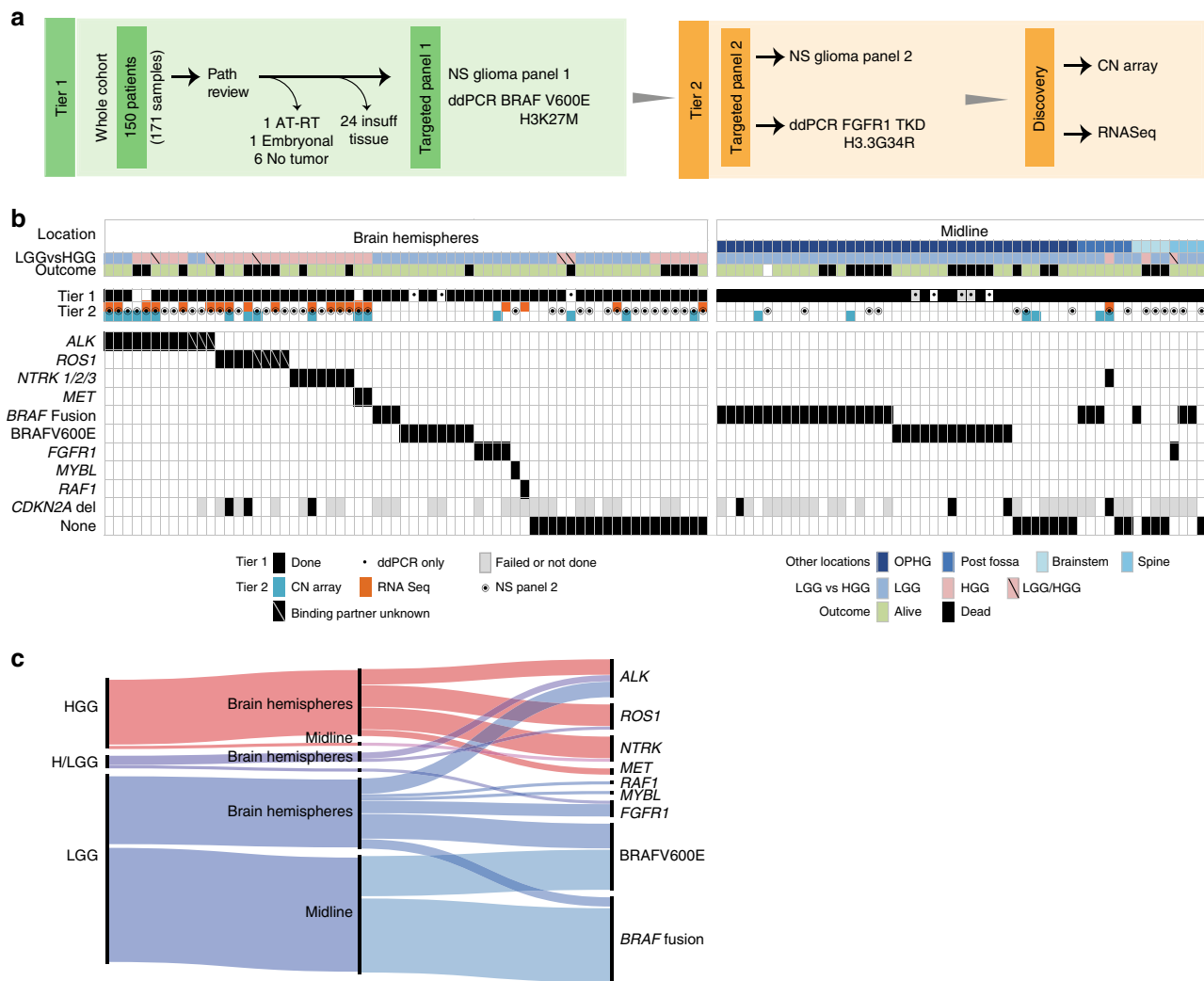


Fig. 1 Molecular characteristics of infant gliomas. **a** The testing strategy used to identify the molecular driver of the tumor. Samples testing positive in tier 1 did not proceed to tier 2. **b** Clinical and genomic features of the infant glioma cohort highlighting the molecular alterations and clinical features associated with them including tumor location, grade and outcome. **c** Alluvial plot (<https://rawgraphs.io/>) showing the distribution of molecular drivers according to tumor location and histology. Red: high-grade glioma, Purple: mixed high and low-grade glioma, Blue: low-grade glioma. AT/RT: Atypical Teratoid Rhabdoid Tumors, NS: NanoString, CN: copy number, ddPCR: droplet digital PCR, HGG: high-grade glioma, LGG: low-grade glioma, OPHG: optic pathway/hypothalamic glioma

(2) Hemispheric, *RAS/MAPK*-driven, and (3) Midline, *RAS/MAPK*-driven (Table 1).

Group 1: hemispheric RTK-driven. Group 1 tumors harbor *ALK/ROS1/NTRK/MET* alterations (Figs. 1b, c; 2a), and are enriched for HGG (82.8%, 24/29, $p < 0.0001$, Fisher exact test, Fig. 4a), specifically glioblastomas (15/29), and younger infants (Table 1, median age at diagnosis 2.8 months, range 0–12 months) (examples of congenital tumors in Fig. 2c–e). All LGG within this group harbored *ALK* alterations (17.2%, 5/29) while all *ROS1/NTRK/MET* alterations appeared exclusively in HGG (Figs. 2c–e, 4a). The survival of *ALK, ROS1*, and *NTRK* driven tumors was heterogeneous (Fig. 4b, c). Five-year OS was 53.8, 25.0, and 42.9% for *ALK, ROS1*, and *NTRK* fused tumors respectively, although the numbers in each group were small (12, 8, 7, respectively). Interestingly, when compared with *ALK*-driven HGG, low-grade *ALK* gliomas tended to be diagnosed at an older age (median = 5.0 versus 1.6 months) and showed a better clinical outcome; all patients with *ALK*-fused LGG ($n = 5$) were alive at a median follow-up of 5 years (range, 1.4–7.2 years), whereas

42.9% (3/7) patients with *ALK*-fused HGG were deceased at a median follow-up of 3 years (range 0.01–8.55 years). Interestingly, in two patients with *NTRK*-fused HGG that underwent a second resection post-chemotherapy, tumor from the second resection had lower grade histology, suggesting that Group 1 tumors may comprise an LGG/HGG continuum and/or have the potential to differentiate and slow their growth over time (Fig. 4d).

Group 2: hemispheric *RAS/MAPK*-driven. Group 2 tumors are comprised solely of hemispheric LGG and represent 26.1% (17/65) of hemispheric gliomas in infants. Group 2 tumors more frequently had non-*BRAF RAS/MAPK* activating events when compared with Group 3 tumors (35.3% vs 2.6%, respectively) (Figs. 4a, 5b). Group 2 tumors have the best outcome of the three subgroups with 10-year OS of 93.3% (81.5–100%) (Fig. 4b), were more readily resected (52.9%, 9/17 gross-total resection (GTR)) versus midline (7.7%, 3/39), and were less likely to require a second line of treatment (0% and 23.5% received radiation or chemotherapy, respectively) (Table 1).

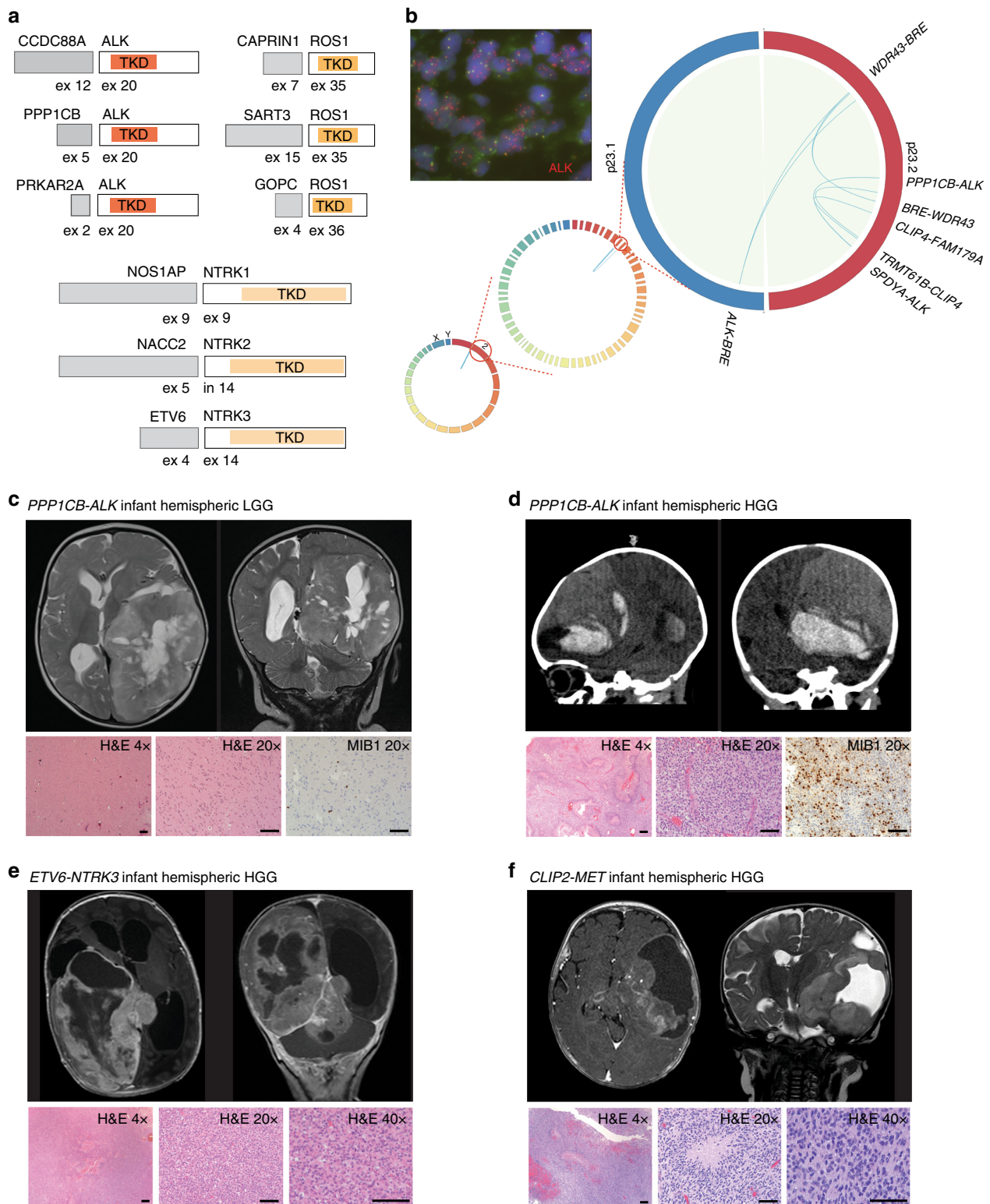


Fig. 2 *ALK/ROS1/NTRK/MET* fused hemispheric infantile glioma. **a** Graphical depiction of the newly identified *ALK/ROS1/NTRK* fusions in infantile glioma. **b** Circos plot depicting the chromothripsis events with > 10 split-read support from total RNAseq with progressive scaling from full chromosome set to chr 2 p23.1-p23.2 arms. FISH for *ALK* further showing evidence of *ALK* translocation and amplification in a tumor positive for *PPP1CB-ALK*. **c, d** Examples of *PPP1CB-ALK* positive tumors—an iLGG diagnosed at 10 months of age (**c**) and a congenital iHGG (**d**)—including imaging (MRI axial and coronal T2-weighted images, **c**; sagittal and coronal head CT, **d**), hematoxylin and eosin (H&E) staining, and proliferation index (MIB-1). Further examples of large hemispheric congenital iHGG harboring RTK fusions with *ETV6-NTRK3* (**e**) and *CLIP2-MET* (**f**). All images are taken at the stated magnification, scale bar = 100 μ m for x20 and x40, 200 μ m for \times 4. TKD: tyrosine kinase domain, LGG: low-grade glioma, HGG: high-grade glioma, H&E: Hematoxylin and eosin stain

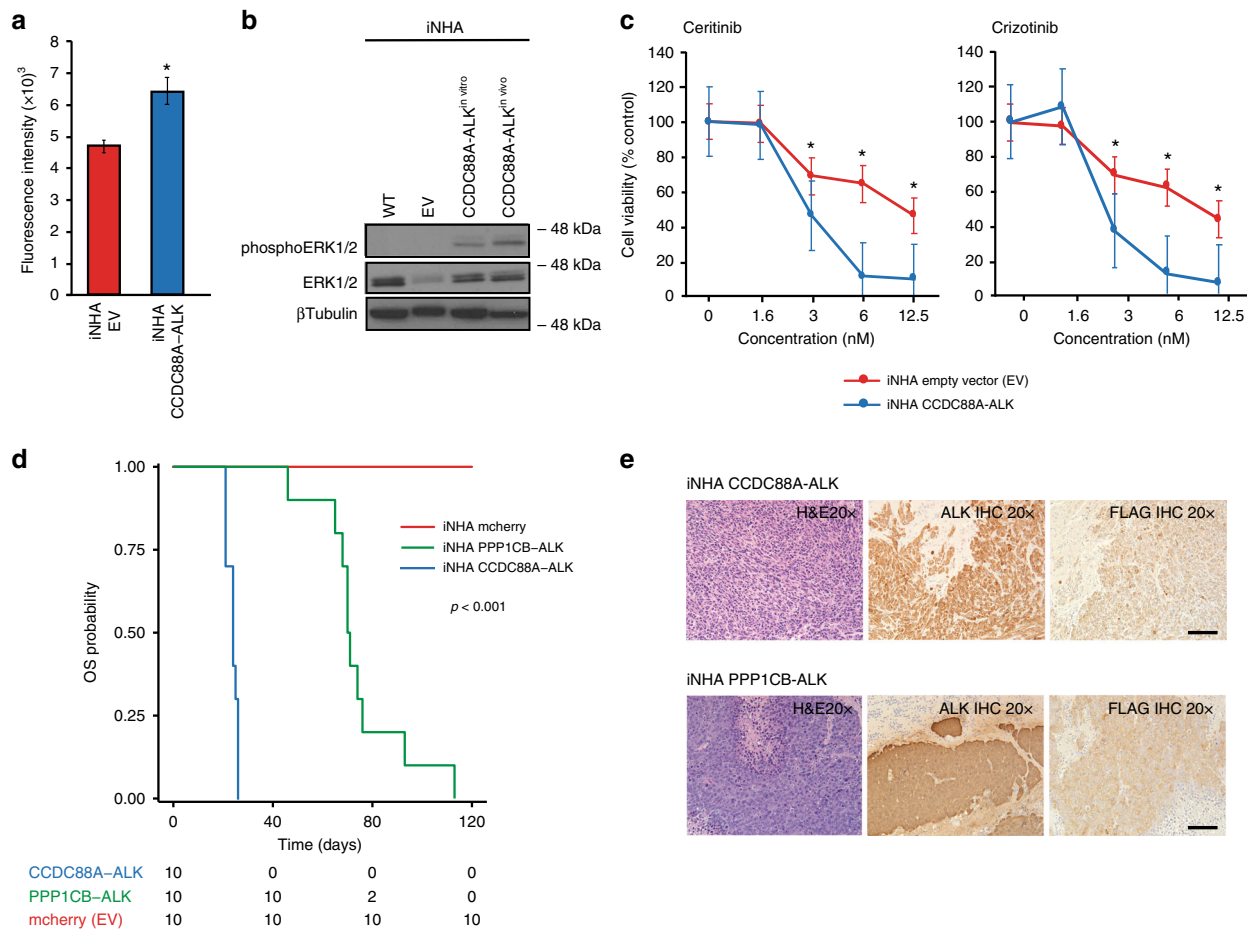


Fig. 3 ALK fusions are tumorigenic and susceptible to targeted agents. **a** Proliferation of iNHA cells overexpressing *CCDC88A-ALK* compared with iNHA with empty vector (EV). Experiments were conducted in triplicates in four biological replicates ($n = 12$). Data are represented as mean with SEM, $*p < 0.05$, paired t test. **b** Western blot for total and phosphorylated ERK1/2 indicative of *MAPK* pathway activation in iNHA cells overexpressing *CCDC88A-ALK* as compared with iNHA EV. **c** Dose-response curves of iNHA expressing *CCDC88A-ALK* versus EV upon treatment with ALK inhibitors Ceritinib and Crizotinib. Experiments were conducted in triplicates in two biological replicates ($n = 6$). Data are represented as mean with SEM, $*p < 0.05$, paired t test. **d** In vivo orthotopic xenografts of iNHAs overexpressing *CCDC88A-ALK* and *PPP1CB-ALK* resulted in tumor formation with 100% penetrance, p value calculated using the log-rank test. **e** Hematoxylin and eosin (H&E) and immunohistochemistry (IHC) showing overexpression of FLAG and ALK in the intracranial xenografts. Images are taken at 20x magnification, scale bar = 100 μm . iNHA: immortalized normal human astrocytes, nM: nanomolar, OS: overall survival

Group 3: midline *RAS/MAPK*-driven. Three quarters (39/53) of all midline infantile gliomas were *RAS/MAPK* driven, 97.4% of which (38/39) harbored canonical *BRAF* alterations. Group 3 infantile gliomas were histologically LGG, primarily consisting of pilocytic astrocytoma (69.2%, 27/39, Table 1). Survival of infant patients with Group 3 tumors was significantly worse with 5-year progression-free survival (PFS) of 23.4% (12.9–42.5%) compared with 55.6% (38.5–80.3%) for infants with other LGGs (non-midline) ($p = 0.01030$, log-rank test, Fig. 5a). Group 3 tumors consisted primarily of optic pathway hypothalamic glioma (OPHG) (31/39, 79.5%) and *RAS/MAPK*-activation was almost exclusively due to *BRAF* alterations (Fig. 5b). Importantly, despite half of all OPHGs in this study being driven by BRAFV600E, no non-OPHG group 3 tumors harbored this mutation (Fig. 5b). No difference in survival was observed between *BRAF* alterations in Group 3 tumors (Fig. 5c). When compared with OPHG in older patients, infants with OPHG had a poorer outcome with 10-year OS of 57.7% (42.8–77.9%) compared with 87.1% (76.8–98.7%) in infant vs SickKids OPHG 1–18 y cohort, respectively ($p < 0.001$, log-rank test, Fig. 5d). Age at diagnosis (infant vs. non-infant) was the only significant predictor of OS both on univariate (HR = 12.839, $p = 0.001$) and in a multivariate analysis that included

sex, extent of resection, *BRAF* fusion and BRAFV600E status, chemotherapy and radiation (HR = 27.084, $p = 0.001$, Supplementary Table 2). The 5-year OS was 75.1% (56.6–99.7%) for infant *BRAF*-fused OPHG and 72.5% (49.5–100%) for infant BRAFV600E OPHG (Fig. 5e, f). This is in stark contrast to older children where long-term survival of patients with *BRAF*-fused OPHG is excellent (5-year OS 100%, $p = 0.00114$, log-rank test, Fig. 5e). A similar trend was seen in BRAFV600E OPHG compared between infants and older children, albeit not statistically significant ($p = 0.1410$, log-rank test, Fig. 5f). Interestingly, despite the striking differences in outcome, infant and pediatric gliomas clustered more according to location rather than molecular alteration or outcome on methylation analysis (Supplementary Fig. 4).

Discussion

In this study we comprehensively characterize the landscape of genetic drivers and their clinical impact, revealing 3 subgroups of infant glioma (Fig. 6). Group 1 tumors are enriched for *ALK/ROS1/NTRK/MET* fusions, alterations analogous to those detected in adult carcinomas such as non-small cell lung cancer^{20,21}

Table 1 Summary of patient characteristics according to infant glioma subtype

Characteristic	Infant glioma subgroup		
	Group 1	Group 2	Group 3
Number	29	17	39
<i>Histology</i>			
Low Grade	5	17	39
High Grade	21	0	0
Mixed	3	0	0
<i>Pathology</i>			
Pilocytic/Pilomyxoid	0	4	27
Ganglioglioma	1	6	0
Diffuse Astrocytoma	2	1	3
Glioblastoma	15	0	0
Low-grade glioma, NOS	2	2	8
High-grade glioma, NOS	1	0	0
Other	4	4	1
<i>Sex</i>			
Male	14	11	21
Female	15	6	18
<i>Outcome</i>			
Alive	20	15	26
Deceased	9	1	12
Unknown	0	1	1
<i>Progression</i>			
Progressed	14	10	33
Stable	14	5	5
Lost to follow-up	0	1	1
Unknown	1	1	0
<i>Extent of surgery</i>			
None	1	0	1
Biopsy	5	3	13
Partial Resection	10	4	21
Gross Total Resection	12	9	3
Unknown	1	1	1
<i>Radiation</i>			
Yes	1	0	8
No	26	16	30
Unknown	2	1	1
<i>Chemotherapy</i>			
Yes	18	4	27
No	10	12	10
Unknown	1	1	2
<i>Age at diagnosis</i>			
Median (months)	2.8 (0.0-12.0)	8.3 (5.0-14.6)	7.5 (0.0-14.0)
Mean (months)	3.8 ± 3.7	9.0 ± 2.9	7.5 ± 3.4
<i>Progression-free survival</i>			
Median (years)	1.1 (0.0-17.6)	1.2 (0.1-14.2)	1.1 (0.0-17.3)
Mean (years)	2.9 ± 4.0	3.0 ± 3.8	2.8 ± 3.8
<i>Overall Survival</i>			
Median (years)	1.9 (0.0-17.7)	3.6 (0.1-16.0)	6.5 (0.1-28.5)
Mean (years)	4.4 ± 4.8	6.1 ± 5.5	7.7 ± 7.1

and colorectal cancer²². Despite similar conservation of the tyrosine kinase domain and region of breakpoints, for most cases the binding partners identified in infant gliomas differ from those in other malignancies. Interestingly, *ETV6-NTRK3* can also be detected in other congenital tumors (congenital mesoblastic nephroma and congenital fibrosarcoma), suggesting a common age-specific mechanism. With the exception of *NTRK* fusions, which were previously shown to be enriched in non-brainstem infant HGG²³, these alterations have been rarely reported in gliomas and this study provides a comprehensive explanation for the isolated case reports of *ALK*^{24,25} and *ROS1*²⁶ fusions in

pediatric glial tumors. Indeed, these alterations are recurrent and define, together with *NTRK*, Group 1 hemispheric infant gliomas. Examination of the clinical data in these cases reveals several interesting facts: (1) their overall survival is good compared with that of older children with HGG and if they survive past two years, almost none progress further; (2) cases where a second surgery was done post-chemotherapy show differentiation and decreased proliferation of the tumor; and (3) cases with LGG histology tend to occur in older infants. Taken together, these observations suggest the capacity for differentiation over time in Group 1 tumors, perhaps, as in other pediatric gliomas, through oncogene induced senescence^{27–30}. Alternatively, as seen in neuroblastoma, a common infant tumor that harbors *ALK* alterations, inherent maturation (also a part of normal development) may explain the morphological and clinical “maturation” of some iHGG into iLGG^{31–33}. This has important implications for our therapeutic approach as it suggests that if we can use non-morbid treatment options, which may include targeted kinase inhibitors, to get them through the rapid growth phase of their tumor, their long-term outlook may be positive. Since infantile gliomas are mostly single-driver tumors, unlike adult lung and colorectal cancers, they are particularly suitable for precision-medicine treatment approaches. Several *ALK* inhibitors have either already shown efficacy or are in clinical trials for *ALK*-driven tumors in children, including Crizotinib³⁴ and Ceritinib, and the newer generation inhibitors with enhanced blood-brain barrier penetration Lorlatinib and Ensartinib. The *NTRK* inhibitor Larotrectinib has also shown antitumor activity in pediatric patients with *NTRK*-fused tumors regardless of age or histology^{35–37}. For example, in the NAVIGATE Phase 2 trial, Larotrectinib treatment resulted in a significant decrease in tumor volume in a 35-year-old woman with glioblastoma³⁸. In the STARTRK1 trial, Drilon et al.³⁹ report a pontine astrocytoma harboring an *NTRK* fusion that showed tumor volume reduction upon treatment with Entrectinib, a tyrosine kinase inhibitor known to target *NTRK*, *ALK* and *ROS1*. These encouraging results have led to a current phase I/Ib study being conducted in pediatrics to evaluate Entrectinib in primary CNS tumors (NCT02650401), which includes *NTRK*, *ROS1*, and *ALK* fused tumors. Results thus far are promising⁴⁰.

Group 2 hemispheric *RAS/MAPK* tumors have an excellent long-term survival and often require only surgery, suggesting that a safe resection and a careful “watch and wait” postsurgical strategy is appropriate for these patients. Group 3 represents midline LGG enriched for *RAS/MAPK* alterations. The lack of HGG histology, such as that observed in the pons or thalami of older children, and the lack of histone mutations in this age group suggest distinct tumor- and/or host-related factors underlying tumor development. In older children, *BRAF* fused-tumors tend to have favorable outcome^{5,41,42} and a good response to conventional therapy. Strikingly, most Group 3 tumors, especially OPHG, progressed regardless of *BRAF* fusion or mutation status. The poor outcome of *BRAF*-fused midline tumors in infants is surprising and in stark contrast to the biological behavior of similar tumors in older children. This disparity may be related to age-specific genetic, tumor or microenvironment factors that are, at this point, poorly understood. As such, there is little or no room for “watch and wait” and a biopsy should be performed upfront to ascertain *BRAF* status and systemic therapy initiated readily thereafter. Given the multiple progressions typically observed with conventional chemotherapy and the encouraging results of targeted *BRAF/MEK* inhibitors in pLGG^{43,44}, these patients should be prioritized for targeted therapies early after initial diagnosis.

Whereas future studies will certainly further characterize infant gliomas, our study broadens our understanding of cancers early

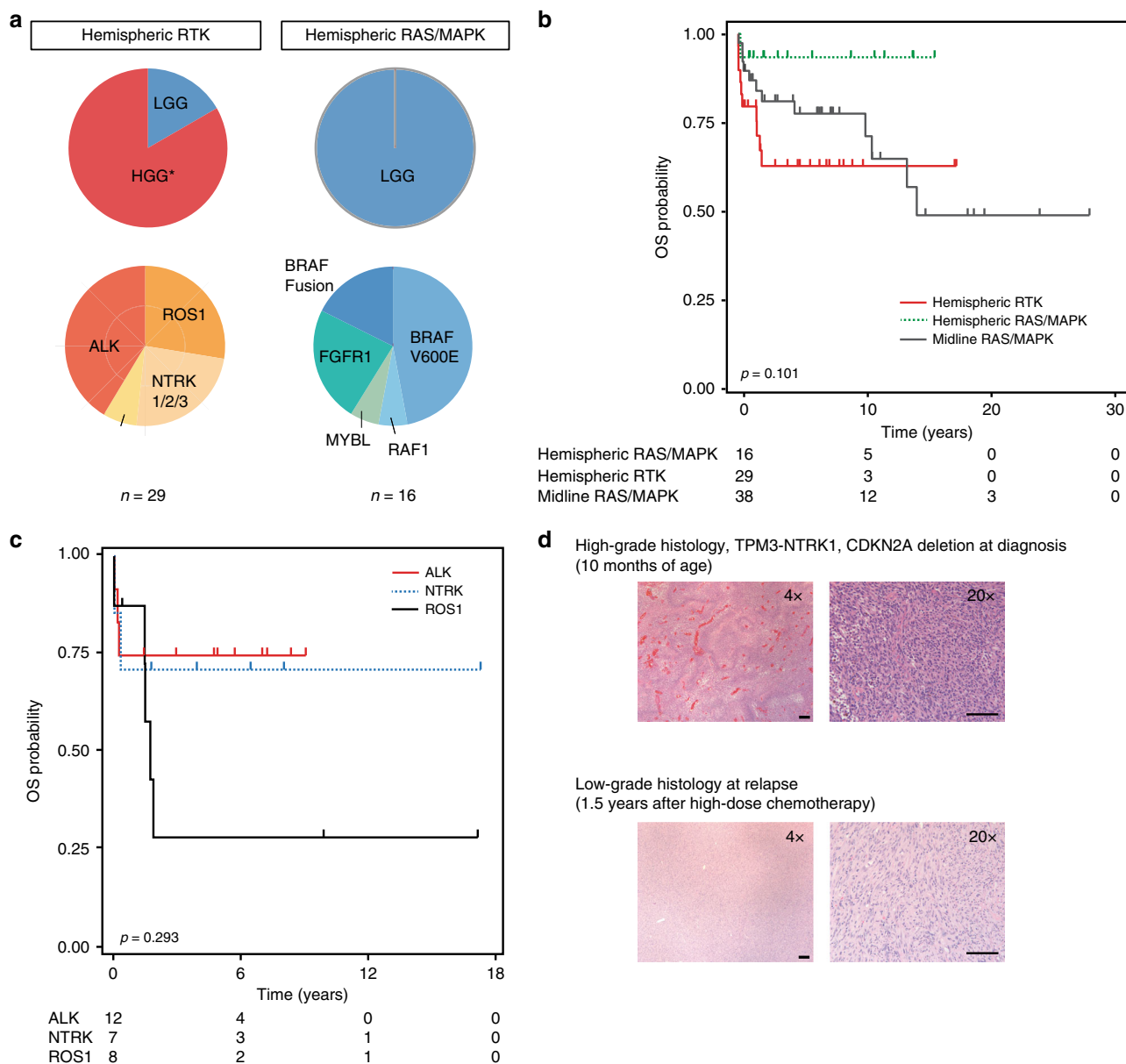


Fig. 4 Characteristics of hemispheric glioma in infants. **a** Histological grade and molecular alterations in Group 1 Hemispheric RTK and Group 2 Hemispheric RAS/MAPK infant gliomas. **b** Overall survival (OS) of infants according to glioma subgroups, p value calculated using the log-rank test. **c** Survival of infants with hemispheric gliomas with respect to patient *ALK*, *ROS1*, and *NTRK* status, p value calculated using the log-rank test. **d** Hematoxylin and eosin (H&E) staining of an infant high grade glioma at diagnosis and second surgery post-chemotherapy, showing a maturing phenotype characterized by lower grade histology. Images are taken at the stated magnification, scale bar = 100 μ m for x20, 200 μ m for x4. HGG: high-grade glioma, LGG: low-grade glioma

in life and emphasizes the need for age-specific diagnostic and treatment guidelines. Our data have immediate therapeutic implications and provide a rationale for early molecular pathology consultation, prospective collection of clinical information and inclusion of infants in upfront clinical trials with targeted inhibitors.

Methods

Patient samples. Tumor specimens and clinical information were collected with informed or waived consent in accordance to protocols approved by the Research Ethics Board at the Hospital for Sick Children (Toronto, ON.) and each of the respective participating institutions. For patients diagnosed at the Hospital for Sick Children (SickKids) and older than 18 years at the time of clinical data collection, survival information was extracted from the Pediatric Oncology Group of Ontario Network Information System (POGONIS)⁴⁵. A central pathology review was completed to ascertain tumor content and confirm the diagnosis of the specimen

where applicable. As only selected slides were available for central review from participating institutions, histological grading rendered at the original institution was used.

Nucleic acid extraction. DNA was extracted from 3–5 10 μ m thick scrolls obtained from formalin-fixed paraffin embedded (FFPE) tissue either shaved from the original block or scraped from unstained slides. The extraction was completed with the QIAamp DNA FFPE Tissue Kit (Qiagen, Valencia, CA). If available, 10–20 mg of fresh frozen tissue rather than FFPE was used for extraction with the DNeasy Blood and Tissue Kit (Qiagen, Valencia, CA). DNA was quantified with the Qubit Fluorometer V2.0 using the dsDNA Broad Range Assay Kit (Thermo Scientific, Waltham, MA). All assay kits and quantification methods were used according to the manufacturer’s guidelines.

RNA was extracted from 3 to 5 10 μ m thick scrolls obtained from FFPE either shaved from the original block or scraped from unstained slides. Extraction was completed using the ExpressArt FFPE Clear RNA extraction kit (Amsbio, Cambridge, MA). If available, 10–20 mg of fresh frozen tissue rather than FFPE was

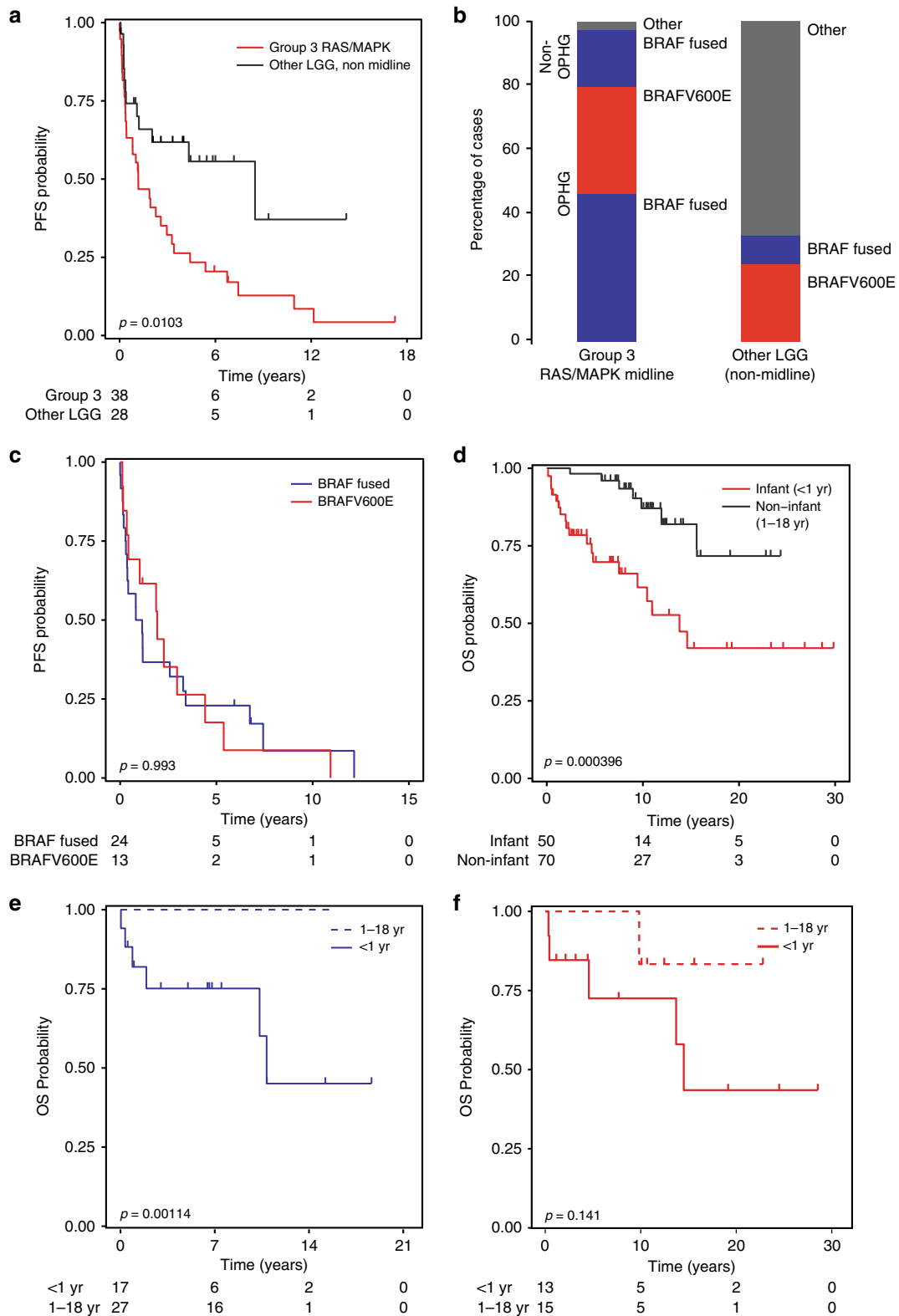


Fig. 5 Group 3 Midline RAS/MAPK tumors. **a** Progression-free survival (PFS) of infants with Group 3 tumors as compared with infants with other LGG (non-midline). **b** The molecular drivers of Group 3 as compared with other infant LGG, highlighting the enrichment for *BRAF* alterations in Group 3 tumors. **c** PFS of infant Group 3 according to *BRAF* status. **d** Overall survival (OS) of infant OPHG versus non-infant (>1-18 y) OPHG in SickKids cohort. Comparison of OS of *BRAF* Fused OPHG (**e**) and BRAFV600E mutated OPHG (**f**) in infants (Group 3 of infant cohort) vs children/adolescents aged 1-18 y (SickKids cohort). All *p*-values calculated using the log-rank test. LGG: low-grade glioma

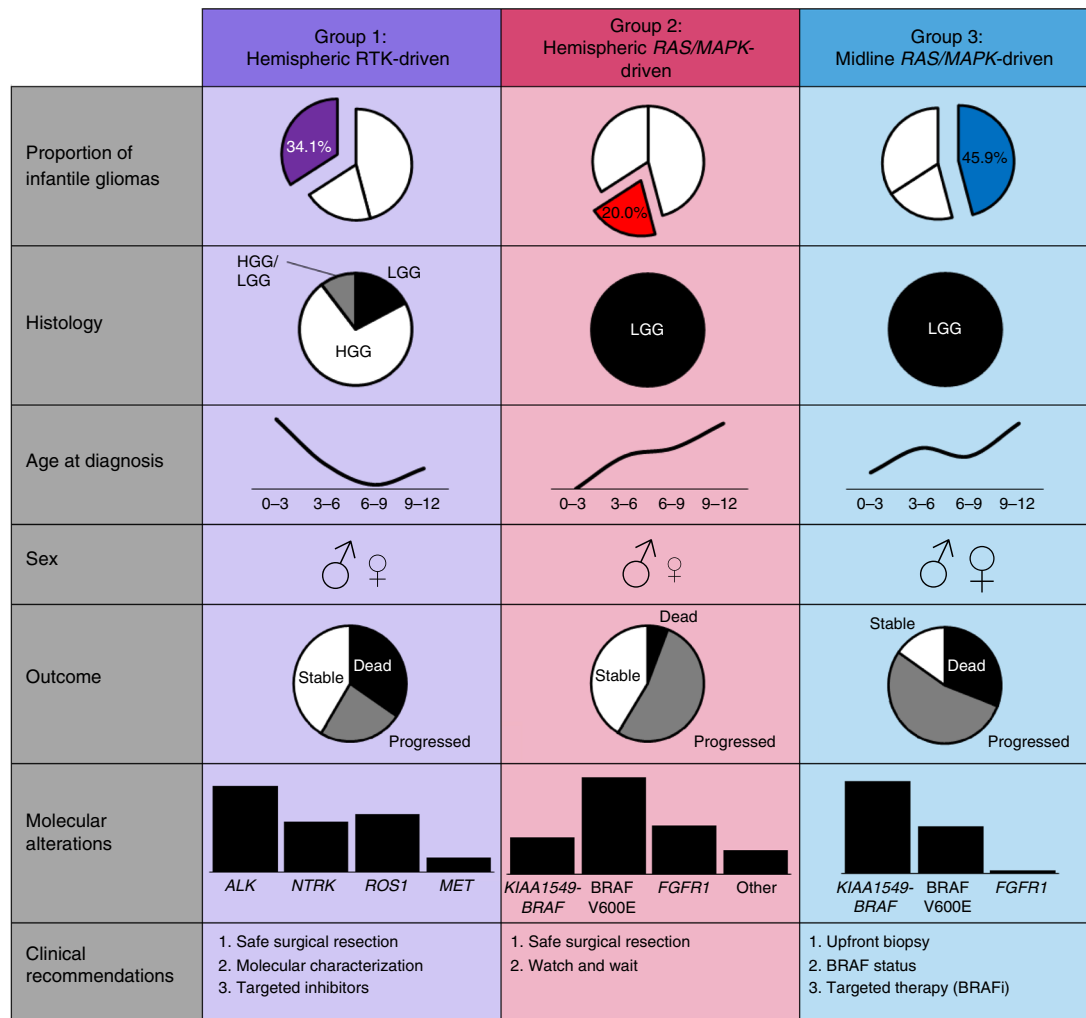


Fig. 6 Graphical summary of the three infant glioma subgroups. HGG: high-grade glioma, LGG: low-grade glioma

used for extraction using the RNeasy Mini Kit (Qiagen, Valencia, CA). RNA was quantified with the Qubit Fluorometer V2.0 using the RNA Broad Range Assay Kit (Thermo Scientific, Waltham, MA). All assay kits and quantification methods were used according to the manufacturer's guidelines.

Droplet digital PCR. Droplet digital PCR was conducted according to manufacturer guidelines. Samples consisted of 1X ddPCR Supermix for probes (no dUTP) (Bio-Rad, Hercules, CA), 900 nM of HPLC-purified forward and reverse primers, 250 nM of target-specific mutant and wild type locked-nucleic acid (LNA) probes, and 10–20 ng of genomic DNA in 20 µl of total volume. Each reaction was mixed with 70 µl of Droplet Generation Oil (Bio-Rad, Hercules, CA) and partitioned into a minimum of 10,000 droplets (range 10,000–15,000) on the QX200 droplet generator (Bio-Rad, Hercules, CA). 40 µl of the resultant droplets were transferred to a 96-well plate and sealed prior to polymerase chain reaction (PCR) amplification. PCRs were performed on a T1000 Thermal Cycler (Bio-Rad, Hercules, CA) and cycling conditions were as follows unless otherwise specified: 95 °C for 10 min, 39 cycles of 94 °C for 30 s and 55 °C for 60 s (with a 2 °C s⁻¹ ramp rate), 98 °C for 10 min, and held at 4 °C. Following amplification, fluorescent intensity was measured with the QX200 Droplet Reader (Bio-Rad, Hercules, CA) and data analysis performed with the QuantaSoft droplet reader software (Bio-Rad, Hercules, CA). Positive and negative droplet populations were detected on two-dimensional graphs and the absolute transcript levels were computed as a percent of the total gene copy. All samples were run in duplicate to ensure validity. Samples were considered positive if a minimum 1% mutant allele frequency was detected in both duplicate runs and a minimum threshold of 50 total droplets containing fluorescent signal were detected. The following assay IDs were used (Bio-Rad, Hercules, CA):

1. PrimePCR ddPCR mutation assay BRAF WT/V600E for p.V600E, Human (unique assay ID: dHsaCP2000027/28).
2. PrimePCR ddPCR mutation assay H3F3A WT/K28M for p.K28M, Human (unique assay ID: dHsaCP2500510/11).

3. PrimePCR ddPCR mutation assay H3F3A WT/G35R for p.G35R, Human (unique assay ID: dHsaMDS720957813).
4. Prime PCR ddPCR copy number assay *CDKN2A*, Human unique assay ID: dHsaCP1000581) and reference prime PCR ddPCR copy number assay *APB31* (unique assay ID: dHsaCP2500348). A known homozygous deleted cell line was used as a zero-copy control, whereas an Ontario Population Genomics Platform healthy control sample (ID: 85751) obtained from The Center of Applied Genomics at SickKids was used as a two-copy control. Samples that showed < 1.2 copy number value as calculated from the total target and reference event number were considered deleted.
5. *FGFR1* TKD is a custom assay design⁴⁶, primers were designed by Integrated DNA Technologies (IDT) as follows: *FGFR1* Exon 8 Forward: 5'-TTCCTTGTCTGCTGCTGCTCT-3', *FGFR1* Exon 8 Reverse: 5'-TCCATCTCTTTGTGCGGTGGTATT-3', *FGFR1* Exon 8 HEX-probe: 5' HEX-TT GCTTCGGTTGTCTCTTCTAGACTGCTGG-3', *FGFR1* Exon 16 Forward: 5'-CACTGCCCTGGGTAGAGGATT-3', *FGFR1* Exon 16 Reverse: 5'-ACAGGAGCACCCCGAAAGA-3', and *FGFR1* Exon 16 FAM-probe: 5' FAM-CTCTAACACCCCTGTGGCTCTCCGC-3'. PCR cycling conditions were as follows: 95 °C for 10 min, 39 cycles of 94 °C for 30 s and 55 °C for 60 s (with a 2 °C s⁻¹ ramp rate), 98 °C for 10 min, and a 15 °C hold. A ratio value of 1.125 for exon 16 relative to exon 8 were called duplicated.

NanoString nCounter. Panel 1: Samples were tested for fusion gene expression with the NanoString nCounter (NanoString, Seattle, WA) Low Grade Glioma Panel 1⁴⁷. In all, 200–500 ng of RNA was mixed with panel specific CodeSet (Low Grade Glioma Panel 1) and allowed to hybridize overnight for 20 h. CodeSet/RNA complexes were then purified and immobilized onto the nCounter cartridge system (NanoString, Seattle, WA). The nCounter cartridge was then scanned at 555 fields of view on the nCounter Digital Analyzer (NanoString, Seattle, WA) to identify the unique fluorescent signatures (barcode) associated with each CodeSet probe. The barcodes are counted and background adjusted with a Poisson correction based on

the negative control spikes included in each run. This was followed by a technical normalization using the four housekeeping transcripts included in each run (*ABCF1*, *ALAS1*, *CLTC*, and *HPRT1*). Data is viewed using a box plot and the extreme statistical outlier (3X the interquartile range (IQR)) method was used to detect the presence of an expressed fusion.

Panel 2: To account for an evolving knowledge of fusions described in gliomas, a second NanoString fusion panel was designed. The fusion targets included on this panel are listed in Supplementary Table 3. In addition to fusion targets, three reporter targeting systems were also included targeting *ALK*, *ROS1*, and *NTRK2*. These reporter systems work by adding multiple sequence tags prior to and after the exons of well-defined breakpoint hotspots. In the event of a breakpoint, the reads from the nCounter appear significantly different between adjacent sequence tags, allowing for the identification of a likely fusion event with an unknown partner. Samples were tested for fusion gene expression with the NanoString nCounter Low Grade Glioma Panel 2 as described above. CodeSet probe sequences for Panel 1 and 2 are proprietary, but available from NanoString Technologies (Seattle, WA) and the Hospital for Sick Children upon request.

Fluorescent in situ hybridization. Fluorescent in situ hybridization (FISH) analysis was performed on formalin fixed paraffin embedded 4- μ m tumor sections using a dual color breakapart probe for the *ALK* gene (Empire Genomics, Buffalo, NY). Slides were baked overnight to fix the section to the slide and were pretreated by using a paraffin pretreatment kit (Abbott, Chicago, IL). Sections were dehydrated before slide/probe co-denaturation on thermobrite (Intermedico, Markham, ON). Denaturation conditions used for paraffin-embedded slides/probes were as follows:

1. 83 °C for 7 min
2. 37 °C overnight

Slides were washed in 0.4x Saline-sodium citrate(SSC)/0.3% NP-40 at 65 °C for 30 s, followed by 2x SSC/0.1% NP-40 at room temperature for 30s. Slides were counterstained with DAPI. Nuclei were analyzed by using an Axioplan2 epifluorescence microscope (Zeiss, Jena, Germany). Images were captured by an Axiocam MRm Camera (Imaging Associates, Bicester, United Kingdom) and analyzed by using an imaging system with Isis Software (Version 5.1.110; MetaSystems, Boston, MA).

Copy number analysis. The OncoScan FFPE Assay Kit (Affymetrix, Santa Clara, CA, USA) was used to assess copy number and loss of heterozygosity events in selected samples that remained uncharacterized by the targeted methods described above. Samples for this assay were sent to the Genome Quebec Innovation Centre for completion of the analysis. The OncoScan FFPE Assay Kit (Affymetrix, Santa Clara, CA, USA) was used according to manufacturer's specifications and sample preparation, including digestion, labelling, quality checks, hybridization, and scanning was performed at the Genome Quebec Innovation Centre. Data was analyzed using the Chromosome Analysis Suite (ChAS) (ThermoFisher Scientific, CA, USA) and copy number calls based on normalized data.

Targeted RNA sequencing. TruSight Sequencing Panel: Samples with sufficient RNA for sequencing had their total RNA constructed into RNA-sequencing libraries using the Illumina TruSight RNA Pan-Cancer Panel Kit (Illumina, San Diego, CA), following the manufacturer's guidelines. cDNA generation was completed by random priming during first and second strand synthesis, followed by 3' end adenylation. Sequencing adapters were then ligated to the fragments to allow for amplification of the cDNA followed by a validation step to ensure proper adapter ligation. Samples were then hybridized to specific target probes used to enrich for cancer-associated genes outlined in the manufacturer's documentation. Paired-end RNA-sequencing was performed using the NextSeq 550 (Illumina, San Diego, CA), sequencing platform. Raw sequencing data was converted to fastq files and analyzed using the BaseSpace application (Illumina, San Diego, CA) with RNA-Seq Alignment V.1.0.0. Variant calling was completed in BaseSpace using the Isaac Variant Caller⁴⁸ while structural rearrangements were identified using Manta⁴⁹ and TopHat⁵⁰.

Whole-transcriptome sequencing. Samples with sufficient RNA quality and quantity were sent for whole transcriptome sequencing at The Center for Applied Genomics (Hospital for Sick Children, Toronto, ON). Library preparation was completed using the TruSeq RNA Library Prep Kit v2 (Illumina, San Diego, CA) using the rRNA depletion kit RiboZero Gold (Illumina, San Diego, CA) according to the manufacturer's specifications. Paired-end sequencing was performed on the Illumina HiSeq 2500 platform. STAR⁵¹ was used to align the raw sequencing data to genome reference "Homo sapiens UCSC hg19". Fusion events were called using four fusion callers: defuse⁵², tophat⁵⁰, ericscript⁵³, and fusionmap⁵⁴.

DNA methylation analysis. Methylation profiling was completed at the microarray centre at the Centre for Applied Genomics at the Hospital for Sick Children (Toronto, Canada). Bisulphite conversion was completed using the EZ DNA Methylation kit (Zymo Research) according to the manufacturer's guidelines. Genome-wide DNA methylation patterns were analyzed using the

HumanMethylation450 BeadChip platform according to manufacturer specifications (Illumina, San Diego, CA). Raw data underwent quality control and pre-processing using the R package "minifi"⁵⁵ and normalized using the R package "noob"⁵⁶. Probes with a SNP at or near the CpG, plus those on the X and Y chromosomes were removed. t-SNE plots were completed using the R package "t-SNE"⁵⁷. Raw.idat files are available at the GEO website under the accession code GSE135017.

Generation of preclinical models. In vitro: immortalized (TERT/E6/E7) normal human astrocytes (iNHA) were a gift from Dr. Pieper⁵⁸ and maintained in culture in DMEM supplemented with 10% Fetal Calf Serum and 1% Penicillin/Streptomycin. FLAG-tagged DNA sequences for the gene fusions *CCDC88A-ALK* and *PPP1CB-ALK* were cloned into pLVX-IRES-mcherry by GenScript USA. Stable lines were generated by lentiviral transduction and mcherry-positive cells selected by FACS sorting (Supplementary Fig. 3). Proper integration was confirmed via PCR analysis using the following primer sequences: *CCDC88A-ALK* forward: 5'-TTGGCTGGGAAGTGAACAG-3', *CCDC88A-ALK* reverse: 5'-CAGCAAA CGAGTAGTTGGGG-3', *PPP1CB-ALK* forward: 5'-GATTGTACCAGACCT GCA-3', *PPP1CB-ALK* reverse: 5'-CGGAGCTTGCTCAGCTTGTGA-3' mcherry forward: 5'-CGAGGAGGATAACATGGCCATC-3', mcherry reverse: 5'-CATCA CGCGTCCCACTTGAAG-3', *RPPH1* forward 5'-TGCTACTAGGCGGGAAC ACC-3', and *RPPH1* reverse: 5'-CTCCGCCCTATGGAAAAAG-3'. Cell lines are available upon request.

In vivo: all in vivo studies were reviewed and accepted by the Animal Care Committee at The Centre for Phenogenomics (Toronto, ON), an affiliate of the Hospital for Sick Children (Toronto, ON). For the intracranial orthotopic in vivo model, 200,000 iNHA mcherry EV, *CCDC88A-ALK* or *PPP1CB-ALK* cells were injected in the brain hemispheres of age (8–10 weeks) and sex-matched NOD/scid/gamma (NSG) mice randomly assigned to either a control or experimental group. Animals were independently monitored by a third party and euthanized at humane endpoints when physiological signs of a brain tumor (hunched posture, scruffy appearance, weight loss, etc.) were detected or at 6 months post injection for the control group. CNS samples were collected at endpoint and evaluated histologically for tumors by The Centre for Phenogenomics (Toronto, ON.) histology core.

In vitro proliferation assay. Cells were seeded at 10,000 cells/well in a 96-well plate and allowed to adhere for 48 h. 20 μ l of Alamar Blue (Thermo Fisher, CA, USA) was added to each well and the plates incubated at 37 °C and 5% CO₂ for 4 h. The fluorescence intensity was measured using a Spectramax Gemini plate reader (Molecular Devices, San Jose, CA, USA) using an excitation wavelength of 530 nm and an emission wavelength of 580 nm. Analysis was completed by normalizing intensity values against wells containing media alone. Data was represented as the mean of each condition. No detectable batch effect was observed.

In vitro drug dose assay. Ceritinib (LDK-378) and Crizotinib (PF-02341066) were purchased from Selleckchem.com and prepared according to the manufacturer's guidelines. Drugs were diluted in DMSO to the defined concentrations. Cells were seeded at 5,000 cells/well in a 96-well plate and allowed to adhere for 24 h. After 24 h, the appropriate drug concentration was added to each well and the plates incubated at 37 °C and 5% CO₂ for 48 h. The fluorescence intensity was measured using a Spectramax Gemini plate reader (Molecular Devices, San Jose, CA, USA) using an excitation wavelength of 530 nm and an emission wavelength of 580 nm. Analysis was completed by normalizing intensity values against wells containing media alone. Data was represented as mean of each condition. No detectable batch effect was observed.

Immunohistochemistry. ALK and FLAG immunostaining was performed using 10 μ m-thick sections of the tumor samples post de-paraffinization. Antigen retrieval was performed in a citrate buffer (pH 6.0) for 5 min prior to peroxidase quenching with 3% hydrogen peroxide (H₂O₂) in PBS for 10 min. The sections were then washed in water and pre-blocked with a normal goat or horse serum for 1 h. Next, the tissue sections were incubated overnight at 4 °C in primary antibody:

1:50 anti-ALK rabbit monoclonal primary antibody, Clone D5F3, Cell Signaling Technology (Danvers, MA, USA).

1:50 anti- FLAG (Monoclonal anti-FLAG M2 antibody, F1804, Sigma-Aldrich (St. Louis, MO, USA).

MIB-1, Synaptophysin and GFAP immunohistochemistry was performed on a Benchmark Ventana Machine (Tucson, AZ) using the Optiview detection kit (Tucson, AZ). CCI was used for heat retrieval for 40 min. Tissue sections were incubated with primary antibody for thirty-six minutes:

RTU anti-MIB-1 (mouse monoclonal primary antibody, GA626, ready-to-use, Dako Omnis, Santa Clara, CA, USA).

RTU anti-Synaptophysin (mouse monoclonal primary antibody, GC202, ready-to-use, Dako Omnis, Santa Clara, CA, USA).

RTU anti-GFAP (rabbit polyclonal primary antibody, GA524, ready-to-use, Dako Omnis, Santa Clara, CA, USA).

After washing the sections with PBS, they were incubated with secondary antibodies (1:100) for 1 h. The Mouse on Mouse Polymer IHC kit (Abcam, Cambridge, UK) was used via the manufacturer guidelines prior to image

acquisition to mitigate cross-reactivity and improve sensitivity for antibodies raised in mice. Finally, the sections were developed with diaminobenzidine tetrahydrochloride substrate for 10 min, and counterstained with hematoxylin. Pictures were obtained using a Nikon E600 microscope (Nikon, Canada).

Western blotting. Total cellular proteins were extracted with 2X SDS lysis buffer containing 1 M Tris (pH 7.4), 0.5 M EDTA, 10% SDS, and glycerol. The proteins were separated on a sodium dodecylsulfate-polyacrylamide gel (Novex WedgeWell 4–20% Tris-Glycine Gel, Invitrogen) electrophoresis (SDS-PAGE), which were then transferred onto nitrocellulose membranes. The nitrocellulose membranes were incubated with the appropriate primary antibodies suspended in 5% albumin blocking solution, followed by the secondary antibodies conjugated to horseradish peroxidase. Antibody binding was detected with Pierce enhanced chemiluminescence reagent western blotting substrate (Thermo Scientific Rockford, USA). Antibodies used were 1:5000 ALK (3633), 1:1000 p-ERK1/2 (9101), 1:5000 Total ERK 42/44 (9102), and 1:10,000 tubulin (2144) purchased from Cell Signaling Technology (Danvers, MA, USA). 1:5000 Anti-Flag (F1804) was purchased from Sigma-Aldrich (St. Louis, MO, USA).

Immunocytochemistry. iNHA cells plated on coverslips were fixed with 4% PFA for 10 min and permeabilized with 0.2% Triton-X for 15 min. Coverslips were blocked (1% BSA, 2.5% Donkey serum, 0.05% Tween-20) for 1 h and probed overnight for FLAG (Sigma, F1804, 1:100) and ALK (Cell Signaling Technology, 3633, 1:200). FLAG and ALK antibodies were subsequently labelled with FITC and TRITC labelled antibodies and mounted (Vector Laboratories, Vectashield, H-1200). Images were acquired using Di8 spinning disk confocal microscope (Leica Microsystems) (40x objective lens) and Volocity software (Quorum Technologies).

Statistics. Statistical analyses were performed using R version 3.5.0 and R Commander Version 2.4–4 with the plugins “Survival” (version 1.2–0), “KMggplot2” (version 0.2–5) and “Plot by Group” (version 0.1–0). PFS was defined as the time between diagnosis and tumor progression requiring a change in clinical management. OS was defined as the time from diagnosis until death or last follow up for the patients still alive. Estimations of survival were calculated using the Kaplan-Meier method and log rank test, p values below 0.05 were considered significant. 5 and 10 year survival is reported as a percentage with 95% confidence intervals. Univariate and multivariate analysis was performed using SPSS v25 (IBM Corporation). This was done using a univariate or multivariate Cox proportional hazards model and significance testing ($\alpha = 0.05$) based on the Wald test.

Source data. Uncropped and unedited gels and blots are contained within Supplementary File Source Data. Raw clinical features used for survival plots and prognostic analysis are also included in this file.

Reporting summary. Further information on research design is available in the Nature Research Reporting Summary linked to this article.

Data availability

The targeted and whole transcriptome sequencing data sets have been deposited in the European-Genome-phenome Archive under accession code EGAS00001003714. The methylation data is available from the GEO website under the accession code GSE135017. All the other data supporting the findings of this study are available within the article, its supplementary information files and from the corresponding author upon reasonable request. A reporting summary for this article is available as a Supplementary Information file.

Received: 18 January 2019 Accepted: 13 August 2019

Published online: 25 September 2019

References

- Ostrom, Q. T. et al. Alex’s lemonade stand foundation infant and childhood primary brain and central nervous system tumors diagnosed in the United States in 2007–2011. *Neuro-Oncology* **16**, x1–x36 (2015).
- Ostrom, Q. T. et al. CBTRUS statistical report: primary brain and other central nervous system tumors diagnosed in the United States in 2009–2013. *Neuro-Oncology* **18**, v1–v75 (2016).
- Louis, D. N. et al. The 2016 World Health Organization classification of tumors of the central nervous system: a summary. *Acta Neuropathol.* **131**, 803–820 (2016).
- Eckel-Passow, J. E. et al. Glioma groups based on 1p/19q, IDH, and TERT promoter mutations in tumors. *New Engl. J. Med.* **372**, 2499–2508 (2015).
- Lassaletta, A. et al. Therapeutic and prognostic implications of BRAF V600E in pediatric low-grade gliomas. *J. Clin. Oncol.* **35**, 2934–2941 (2017).
- Mistry, M. et al. BRAF mutation and CDKN2A deletion define a clinically distinct subgroup of childhood secondary high-grade glioma. *J. Clin. Oncol.* **33**, 1015–1022 (2015).
- Jones, D. T. et al. Tandem duplication producing a novel oncogenic BRAF fusion gene defines the majority of pilocytic astrocytomas. *Cancer Res.* **68**, 8673–8677 (2008).
- Jones, C. et al. Pediatric high-grade glioma: biologically and clinically in need of new thinking. *Neuro-Oncology* **19**, 153–161 (2017).
- Wessels, P. H. et al. Supratentorial grade II astrocytoma: biological features and clinical course. *Lancet Neurol.* **2**, 395–403 (2003).
- Schwartzentruber, J. et al. Driver mutations in histone H3.3 and chromatin remodelling genes in paediatric glioblastoma. *Nature* **482**, 226–231 (2012).
- Wu, G. et al. Somatic histone H3 alterations in pediatric diffuse intrinsic pontine gliomas and non-brainstem glioblastomas. *Nat. Genet.* **44**, 251–253 (2012).
- Green, A. L., Furutani, E., Ribeiro, K. B. & Rodriguez Galindo, C. Death within 1 month of diagnosis in childhood cancer: an analysis of risk factors and scope of the problem. *J. Clin. Oncol.* **35**, 1320–1327 (2017).
- Ater, J. L. et al. Randomized study of two chemotherapy regimens for treatment of low-grade glioma in young children: a report from the Children’s Oncology Group. *J. Clin. Oncol.* **30**, 2641–2647 (2012).
- Mirow, C. et al. Children <1 year show an inferior outcome when treated according to the traditional LGG treatment strategy: a report from the German multicenter trial HIT-LGG 1996 for children with low grade glioma (LGG). *Pediatr. Blood Cancer* **61**, 457–463 (2014).
- Gnekow, A. K. et al. A European randomised controlled trial of the addition of etoposide to standard vincristine and carboplatin induction as part of an 18-month treatment programme for childhood (<=16 years) low grade glioma - a final report. *Eur. J. Cancer* **81**, 206–225 (2017).
- Mackay, A. et al. Integrated molecular meta-analysis of 1,000 pediatric high-grade and diffuse intrinsic pontine glioma. *Cancer Cell* **32**, 520–537, e525 (2017).
- Duffner, P. K. et al. Treatment of infants with malignant gliomas: the Pediatric Oncology Group experience. *J. Neuro-Oncol.* **28**, 245–256 (1996).
- Krishnatry, R. et al. Clinical and treatment factors determining long-term outcomes for adult survivors of childhood low-grade glioma: a population-based study. *Cancer* **122**, 1261–1269 (2016).
- Bandopadhyay, P. et al. Long-term outcome of 4,040 children diagnosed with pediatric low-grade gliomas: an analysis of the Surveillance Epidemiology and End Results (SEER) database. *Pediatr. Blood Cancer* <https://doi.org/10.1002/pbc.24958> (2014).
- Takeuchi, K. et al. RET, ROS1 and ALK fusions in lung cancer. *Nat. Med.* **18**, 378–381 (2012).
- Vaishnavi, A. et al. Oncogenic and drug-sensitive NTRK1 rearrangements in lung cancer. *Nat. Med.* **19**, 1469–1472 (2013).
- Pietrantonio, F. et al. ALK, ROS1, and NTRK rearrangements in metastatic colorectal cancer. *J. Natl Cancer Inst.* **109**, <https://doi.org/10.1093/jnci/djx089> (2017).
- Wu, G. et al. The genomic landscape of diffuse intrinsic pontine glioma and pediatric non-brainstem high-grade glioma. *Nat. Genet.* **46**, 444–450 (2014).
- Olsen, T. K. et al. Fusion genes with ALK as recurrent partner in ependymoma-like gliomas: a new brain tumor entity? *Neuro-Oncology* **17**, 1365–1373 (2015).
- Aghajan, Y., Levy, M. L., Malicki, D. M. & Crawford, J. R. Novel PPP1CB-ALK fusion protein in a high-grade glioma of infancy. *BMJ Case Rep.* **2016**, <https://doi.org/10.1136/bcr-2016-217189> (2016).
- Kiehna, E. N. et al. Novel GOPC(FIG)-ROS1 fusion in a pediatric high-grade glioma survivor. *J. Neurosurg. Pediatr.* **20**, 51–55 (2017).
- Courtois-Cox, S. et al. A negative feedback signaling network underlies oncogene-induced senescence. *Cancer Cell* **10**, 459–472 (2006).
- Dankort, D. et al. A new mouse model to explore the initiation, progression, and therapy of BRAFV600E-induced lung tumors. *Genes Dev.* **21**, 379–384 (2007).
- Michaloglou, C. et al. BRAF600-associated senescence-like cell cycle arrest of human naevi. *Nature* **436**, 720–724 (2005).
- Sarkisian, C. J. et al. Dose-dependent oncogene-induced senescence in vivo and its evasion during mammary tumorigenesis. *Nat. Cell Biol.* **9**, 493–505 (2007).
- Cozzi, D. A. et al. Long-term follow-up of the “wait and see” approach to localized perinatal adrenal neuroblastoma. *World J. Surg.* **37**, 459–465 (2013).
- Tanaka, M. et al. A prospective study of a long-term follow-up of an observation program for neuroblastoma detected by mass screening. *Pediatr. Blood Cancer* **54**, 573–578 (2010).
- Ambros, I. M. et al. Role of ploidy, chromosome 1p, and Schwann cells in the maturation of neuroblastoma. *New Engl. J. Med.* **334**, 1505–1511 (1996).
- Mosse, Y. P. et al. Safety and activity of crizotinib for paediatric patients with refractory solid tumours or anaplastic large-cell lymphoma: a Children’s Oncology Group phase 1 consortium study. *Lancet Oncol.* **14**, 472–480 (2013).

35. Laetsch, T. W. et al. Larotrectinib for paediatric solid tumours harbouring NTRK gene fusions: phase 1 results from a multicentre, open-label, phase 1/2 study. *Lancet Oncol.* **19**, 705–714 (2018).
36. Drilon, A. et al. Efficacy of larotrectinib in TRK fusion-positive cancers in adults and children. *New Engl. J. Med.* **378**, 731–739 (2018).
37. Ziegler, D. S. et al. Brief Report: Potent clinical and radiological response to larotrectinib in TRK fusion-driven high-grade glioma. *Br. J. Cancer* **119**, 693–696 (2018).
38. Schram A. M. et al. AACR Annual Meeting 2017 Online Proceedings and 605 Itinerary Planner Home Section 34. 2017. LB-302/10 — potential role of 606 larotrectinib (LOXO-101), a selective pan-TRK inhibitor, in NTRK fusion-607 positive recurrent glioblastoma. <https://doi.org/10.1158/1538-7445.AM2017-LB-302>.
39. Drilon, A. et al. Safety and antitumor activity of the multitargeted pan-TRK, ROS1, and ALK inhibitor entrectinib: combined results from two phase I trials (ALKA-372-001 and STARTRK-1). *Cancer Discov.* **7**, 400–409 (2017).
40. Desai, A. V. et al. Phase 1 study of entrectinib (RXDX-101), a TRK, ROS1, 612 and ALK inhibitor, in children, adolescents, and young adults with recurrent or 613 refractory solid tumors. *J. Clin. Oncol.* **36**(suppl 15), 10536-614 10536 (2018).
41. Hawkins, C. et al. BRAF-KIAA1549 fusion predicts better clinical outcome in pediatric low-grade astrocytoma. *Clin. Cancer Res.* **17**, 4790–4798 (2011).
42. Horbinski, C., Nikiforova, M. N., Hagenkord, J. M., Hamilton, R. L. & Pollack, I. F. Interplay among BRAF, p16, p53, and MIB1 in pediatric low-grade gliomas. *Neuro-Oncology* **14**, 777–789 (2012).
43. Lassaletta, A. et al. Profound clinical and radiological response to BRAF inhibition in a 2-month-old diencephalic child with hypothalamic/chiasmatic glioma. *Pediatr. Blood Cancer* **63**, 2038–2041 (2016).
44. Banerjee, A. et al. A phase I trial of the MEK inhibitor selumetinib (AZD6244) in pediatric patients with recurrent or refractory low-grade glioma: a Pediatric Brain Tumor Consortium (PBTC) study. *Neuro-Oncology* **19**, 1135–1144 (2017).
45. Greenberg, M. L., Barr, R. D., DiMonte, B., McLaughlin, E. & Greenberg, C. Childhood cancer registries in Ontario, Canada: lessons learned from a comparison of two registries. *Int. J. Cancer* **105**, 88–91 (2003).
46. Fina, F. et al. Droplet digital PCR is a powerful technique to demonstrate frequent FGFR1 duplication in dysembryoplastic neuroepithelial tumors. *Oncotarget* **8**, 2104–2113 (2017).
47. Ryall, S. et al. Multiplex detection of pediatric low-grade glioma signature fusion transcripts and duplications using the NanoString nCounter System. *J. Neuropathol. Exp. Neurol.* **76**, 562–570 (2017).
48. Racz, C. et al. Isaac: ultra-fast whole-genome secondary analysis on Illumina sequencing platforms. *Bioinformatics* **29**, 2041–2043 (2013).
49. Chen, X. et al. Manta: rapid detection of structural variants and indels for germline and cancer sequencing applications. *Bioinformatics* **32**, 1220–1222 (2016).
50. Kim, D. & Salzberg, S. L. TopHat-Fusion: an algorithm for discovery of novel fusion transcripts. *Genome Biol.* **12**, R72 (2011).
51. Dobin, A. et al. STAR: ultrafast universal RNA-seq aligner. *Bioinformatics* **29**, 15–21 (2013).
52. McPherson, A. et al. deFuse: an algorithm for gene fusion discovery in tumor RNA-Seq data. *PLoS Comput. Biol.* **7**, e1001138 (2011).
53. Kumar, S., Vo, A. D., Qin, F. & Li, H. Comparative assessment of methods for the fusion transcripts detection from RNA-Seq data. *Sci. Rep.* **6**, 21597 (2016).
54. Ge, H. et al. FusionMap: detecting fusion genes from next-generation sequencing data at base-pair resolution. *Bioinformatics* **27**, 1922–1928 (2011).
55. Aryee, M. J. et al. Minfi: a flexible and comprehensive Bioconductor package for the analysis of Infinium DNA methylation microarrays. *Bioinformatics* **30**, 1363–1369 (2014).
56. Triche, T. J. Jr., Weisenberger, D. J., Van Den Berg, D., Laird, P. W. & Siegmund, K. D. Low-level processing of Illumina Infinium DNA Methylation BeadArrays. *Nucleic Acids Res.* **41**, e90 (2013).
57. Krijthe, J. H. Rtsne: T-Distributed Stochastic Neighbor Embedding using a Barnes-Hut Implementation <https://github.com/jkrijthe/Rtsne>. (2015).
58. Sonoda, Y. et al. Formation of intracranial tumors by genetically modified human astrocytes defines four pathways critical in the development of human anaplastic astrocytoma. *Cancer Res.* **61**, 4956–4960 (2001).

Acknowledgements

A.S.G.S. was supported by a Garron Family Cancer Center fellowship, Worldwide Cancer Research and Gertrud-Hagmann-Stiftung. S.R. was supported by RESTRACOMP of the Hospital for Sick Children, the Canadian Institute of Health Research (CIHR) CGS-M scholarship, and an Ontario Graduate Scholarship (OGS). M.Z. was supported by a Garron Family Cancer Center fellowship and RESTRACOMP of The Hospital for Sick Children. This research is funded by the Canadian Cancer Society (Grant # 702296), Canadian Institutes of Health Research (Grant #159805) and A Kids' Brain Tumor Cure Foundation, aka The PLGA foundation. We would like to acknowledge the Canadian Centre for Computational Genomics (C3G), part of the Genome Innovation Network (GIN), funded by Genome Canada through Genome Quebec and Ontario Genomics. For excellent technical support, advice and expertise, we thank: Paula Marrano, Famida Spatare, Monte Borden (Department of Pathology, the Hospital for Sick Children, Toronto); Cindy Zhang (Brain Tumor Research Center, The Hospital for Sick Children, Toronto); Dr. João Gonçalves (Mount Sinai Hospital, Toronto); Kelly Pairan (Department of Pathology and Laboratory Medicine, Nationwide Children's Hospital, Columbus).

Author contributions

A.S.G.S., S.R., U.T. and C.H. led the study and wrote the manuscript. A.S.G.S., S.R., C.L., P.K., Y.Z., M.J. and Cl. L., designed, supervised and performed sequencing experiments. S.R., C.L., A.A., P.K., A.R., R.Sid. and M.B. conducted and supervised the computational analysis of samples. A.S.G.S., S.R., T.B. and B.K. led the in vivo experimentation and managed the mouse colonies. A.S.G.S., S.R., K.F., M.Z., A.L., C.L., T.B., B.K., L.F.N. and P.A. conducted experiments and provided technical and bioinformatics support. C.D., S.C., D.R.B., J.L.F., S.L.C., I.D.P., M.P., C.C.F., M.A.G., E.R., D.S., J.Z., L.K., M.G.A., O.C., A.M.L.M., P.S., K.T., Y.N., K.I., M.N., H.S., M.J.G., R.Sil., D.L.J., J.M., B.W., F.K.H.L., A.O., D.M., B.C., I.F., N.Z., J.R.H., A.N. and L.G. provided patient samples and clinical details. L.G., M.S., M.B., M.S.L., U.B., V.R., E.B. and M.D.T. provided valuable input regarding study design, data analysis, and interpretation of results. U.T. and C.H. provided financial and technical infrastructure and oversaw the study as joint senior authors and project co-leaders.

Additional information

Supplementary Information accompanies this paper at <https://doi.org/10.1038/s41467-019-12187-5>.

Competing interests: The authors declare no competing interests.

Reprints and permission information is available online at <http://npg.nature.com/reprintsandpermissions/>

Peer review information *Nature Communications* thanks the anonymous reviewer(s) for their contribution to the peer review of this work.

Publisher's note Springer Nature remains neutral with regard to jurisdictional claims in published maps and institutional affiliations.



Open Access This article is licensed under a Creative Commons Attribution 4.0 International License, which permits use, sharing, adaptation, distribution and reproduction in any medium or format, as long as you give appropriate credit to the original author(s) and the source, provide a link to the Creative Commons license, and indicate if changes were made. The images or other third party material in this article are included in the article's Creative Commons license, unless indicated otherwise in a credit line to the material. If material is not included in the article's Creative Commons license and your intended use is not permitted by statutory regulation or exceeds the permitted use, you will need to obtain permission directly from the copyright holder. To view a copy of this license, visit <http://creativecommons.org/licenses/by/4.0/>.

© The Author(s) 2019

Ana S. Guerreiro Stucklin^{1,2,3,4,45}, Scott Ryall^{1,2,5,45}, Kohei Fukuoka^{2,3}, Michal Zapotocky^{2,3,6}, Alvaro Lassaletta^{3,7}, Christopher Li^{1,2,5}, Taylor Bridge^{1,2}, Byungjin Kim^{1,2,5}, Anthony Arnoldo⁸, Paul E. Kowalski⁸, Yvonne Zhong⁸, Monique Johnson⁸, Claire Li⁸, Arun K. Ramani⁹, Robert Siddaway^{1,2}, Liana Figueiredo Nobre^{2,3}, Pasqualino de Antonellis^{1,2}, Christopher Dunham^{10,11}, Sylvia Cheng^{12,13},

Daniel R. Boué^{14,15}, Jonathan L. Finlay¹⁶, Scott L. Coven¹⁶, Inmaculada de Prada¹⁷, Marta Perez-Somarrriba⁷, Claudia C. Faria^{18,19}, Michael A. Grotzer⁴, Elisabeth Rushing²⁰, David Sumerauer⁶, Josef Zamecnik⁶, Lenka Krskova⁶, Miguel Garcia Ariza²¹, Ofelia Cruz²², Andres Morales La Madrid²², Palma Solano²³, Keita Terashima²⁴, Yoshiko Nakano²⁵, Koichi Ichimura²⁵, Motoo Nagane²⁶, Hiroaki Sakamoto²⁷, Maria Joao Gil-da-Costa²⁸, Roberto Silva²⁹, Donna L. Johnston³⁰, Jean Michaud³¹, Bev Wilson³², Frank K.H. van Landeghem³³, Angelica Oviedo^{34,35}, P. Daniel McNeely³⁶, Bruce Crooks³⁷, Iris Fried³⁸, Nataliya Zhukova³⁹, Jordan R. Hansford^{39,40}, Amulya Nageswararao⁴¹, Livia Garzia⁴², Mary Shago^{5,8}, Michael Brudno⁹, Meredith S. Irwin³, Ute Bartels³, Vijay Ramaswamy^{2,3}, Eric Bouffet³, Michael D. Taylor^{1,2,5,43}, Uri Tabori^{1,2,3,44,46} & Cynthia Hawkins^{1,2,5,8,46}

¹Developmental and Stem Cell Biology Program, The Hospital for Sick Children, Toronto, ON, Canada. ²The Arthur and Sonia Labatt Brain Tumor Research Centre, The Hospital for Sick Children, Toronto, ON, Canada. ³Department of Hematology and Oncology, The Hospital for Sick Children, Toronto, ON, Canada. ⁴Department of Oncology and Children's Research Center, University Children's Hospital Zurich, Zurich, Switzerland. ⁵Department of Laboratory Medicine and Pathobiology, University of Toronto, Toronto, ON, Canada. ⁶Second Faculty of Medicine, Charles University and University Hospital Motol, Prague, Czech Republic. ⁷Department of Pediatric Hematology and Oncology, Hospital Universitario Niño Jesús, Madrid, Spain. ⁸Department of Pediatric Laboratory Medicine, The Hospital for Sick Children, Toronto, ON, Canada. ⁹Centre for Computational Medicine, The Hospital for Sick Children, Toronto, ON, Canada. ¹⁰Division of Anatomic Pathology, British Columbia Children's Hospital, Vancouver, BC, Canada. ¹¹Department of Pathology and Laboratory Medicine, The University of British Columbia, Vancouver, BC, Canada. ¹²Department of Pediatrics, The University of British Columbia, Vancouver, BC, Canada. ¹³Division of Hematology/Oncology/BMT, British Columbia Children's Hospital, Vancouver, BC, Canada. ¹⁴Department of Pathology and Laboratory Medicine, Nationwide Children's Hospital, Columbus, OH, USA. ¹⁵Department of Pathology, The Ohio State University College of Medicine, Columbus, OH, USA. ¹⁶Division of Hematology/Oncology/Bone Marrow Transplantation, Nationwide Children's Hospital, Columbus, OH, USA. ¹⁷Department of Pathology, Hospital Universitario Niño Jesús, Madrid, Spain. ¹⁸Division of Neurosurgery, Centro Hospitalar Lisboa Norte, Hospital de Santa Maria, Lisbon, Portugal. ¹⁹Instituto de Medicina Molecular João Lobo Antunes, Faculdade de Medicina, Universidade de Lisboa, Lisbon, Portugal. ²⁰Institute of Neuropathology, University Hospital Zurich, Zurich, Switzerland. ²¹Department of Pediatric Oncology, Hospital Cruces, Bilbao, Spain. ²²Department of Pediatric Oncology, Hospital Sant Joan de Déu, Barcelona, Spain. ²³Department of Pediatric Oncology, Hospital Infantil Virgen del Rocío, Sevilla, Spain. ²⁴Children's Cancer Center, National Center for Child Health and Development, Tokyo, Japan. ²⁵Division of Brain Tumor Translational Research, National Cancer Center Research Institute, Tokyo, Japan. ²⁶Department of Neurosurgery, Kyorin University Faculty of Medicine, Tokyo, Japan. ²⁷Department of Pediatric Neurosurgery, Osaka City General Hospital, Osaka, Japan. ²⁸Division of Pediatric Hematology, University Hospital de São João, Porto, Portugal. ²⁹Department of Pathology, University Hospital de São João, Porto, Portugal. ³⁰Division of Hematology/Oncology, Children's Hospital of Eastern Ontario, Ottawa, ON, Canada. ³¹Department of Pathology and Laboratory Medicine, University of Ottawa, Ottawa, ON, Canada. ³²Department of Pediatrics, University of Alberta, Edmonton, AB, Canada. ³³Department of Laboratory Medicine & Pathology, University of Alberta, Edmonton, AB, Canada. ³⁴Department of Anatomic Pathology, Dalhousie University, Halifax, NS, Canada. ³⁵Department of Pathology Laboratory Medicine, IWK Health Centre, Halifax, NS, Canada. ³⁶Division of Neurosurgery, IWK Health Centre, Halifax, NS, Canada. ³⁷Division of Hematology-Oncology, IWK Health Centre, Halifax, NS, Canada. ³⁸The Department of Pediatric Hematology Oncology, Hadassah Medical Center, Jerusalem, Israel. ³⁹Children's Cancer Centre, Royal Children's Hospital, Melbourne, Australia. ⁴⁰Murdoch Children's Research Institute, Department of Paediatrics, University of Melbourne, Melbourne, Australia. ⁴¹Division of Pediatric Hematology/Oncology, Mayo Clinic, Rochester, MN, USA. ⁴²Department of Medicine, McGill University, Montreal, QC, Canada. ⁴³Department of Neurosurgery, The Hospital for Sick Children, Toronto, ON, Canada. ⁴⁴Department of Medical Biophysics, University of Toronto, Toronto, ON, Canada. ⁴⁵These authors contributed equally: Ana S. Guerreiro Stucklin, Scott Ryall. ⁴⁶These authors jointly supervised this work: Uri Tabori, Cynthia Hawkins.

Minerva Access is the Institutional Repository of The University of Melbourne

Author/s:

Guerreiro Stucklin, AS; Ryall, S; Fukuoka, K; Zapotocky, M; Lassaletta, A; Li, C; Bridge, T; Kim, B; Arnoldo, A; Kowalski, PE; Zhong, Y; Johnson, M; Li, C; Ramani, AK; Siddaway, R; Nobre, LF; de Antonellis, P; Dunham, C; Cheng, S; Boué, DR; Finlay, JL; Coven, SL; de Prada, I; Perez-Somarriba, M; Faria, CC; Grotzer, MA; Rushing, E; Sumerauer, D; Zamecnik, J; Krskova, L; Garcia Ariza, M; Cruz, O; Morales La Madrid, A; Solano, P; Terashima, K; Nakano, Y; Ichimura, K; Nagane, M; Sakamoto, H; Gil-da-Costa, MJ; Silva, R; Johnston, DL; Michaud, J; Wilson, B; van Landeghem, FKH; Oviedo, A; McNeely, PD; Crooks, B; Fried, I; Zhukova, N; Hansford, JR; Nageswararao, A; Garzia, L; Shago, M; Brudno, M; Irwin, MS; Bartels, U; Ramaswamy, V; Bouffet, E; Taylor, MD; Tabori, U; Hawkins, C

Title:

Alterations in ALK/ROS1/NTRK/MET drive a group of infantile hemispheric gliomas.

Date:

2019-09-25

Citation:

Guerreiro Stucklin, AS; Ryall, S; Fukuoka, K; Zapotocky, M; Lassaletta, A; Li, C; Bridge, T; Kim, B; Arnoldo, A; Kowalski, PE; Zhong, Y; Johnson, M; Li, C; Ramani, AK; Siddaway, R; Nobre, LF; de Antonellis, P; Dunham, C; Cheng, S; Boué, DR; Finlay, JL; Coven, SL; de Prada, I; Perez-Somarriba, M; Faria, CC; Grotzer, MA; Rushing, E; Sumerauer, D; Zamecnik, J; Krskova, L; Garcia Ariza, M; Cruz, O; Morales La Madrid, A; Solano, P; Terashima, K; Nakano, Y; Ichimura, K; Nagane, M; Sakamoto, H; Gil-da-Costa, MJ; Silva, R; Johnston, DL; Michaud, J; Wilson, B; van Landeghem, FKH; Oviedo, A; McNeely, PD; Crooks, B; Fried, I; Zhukova, N; Hansford, JR; Nageswararao, A; Garzia, L; Shago, M; Brudno, M; Irwin, MS; Bartels, U; Ramaswamy, V; Bouffet, E; Taylor, MD; Tabori, U; Hawkins, C, Alterations in ALK/ROS1/NTRK/MET drive a group of infantile hemispheric gliomas., Nat Commun, 2019, 10 (1), pp. 4343 - ?

Persistent Link:

<http://hdl.handle.net/11343/233975>