



# Gini coefficients for measuring the distribution of sexually transmitted infections among individuals with different levels of sexual activity

Sandro Gsteiger<sup>1</sup>, Nicola Low<sup>1</sup>, Pam Sonnenberg<sup>2</sup>, Catherine H. Mercer<sup>2</sup> and Christian L. Althaus<sup>1</sup>

<sup>1</sup> Institute of Social and Preventive Medicine (ISPM), University of Bern, Bern, Switzerland

<sup>2</sup> Institute for Global Health, University College London, London, UK

## ABSTRACT

**Objectives:** Gini coefficients have been used to describe the distribution of *Chlamydia trachomatis* (CT) infections among individuals with different levels of sexual activity. The objectives of this study were to investigate Gini coefficients for different sexually transmitted infections (STIs), and to determine how STI control interventions might affect the Gini coefficient over time.

**Methods:** We used population-based data for sexually experienced women from two British National Surveys of Sexual Attitudes and Lifestyles (Natsal-2: 1999–2001; Natsal-3: 2010–2012) to calculate Gini coefficients for CT, *Mycoplasma genitalium* (MG), and human papillomavirus (HPV) types 6, 11, 16 and 18. We applied bootstrap methods to assess uncertainty and to compare Gini coefficients for different STIs. We then used a mathematical model of STI transmission to study how control interventions affect Gini coefficients.

**Results:** Gini coefficients for CT and MG were 0.33 (95% CI [0.18–0.49]) and 0.16 (95% CI [0.02–0.36]), respectively. The relatively small coefficient for MG suggests a longer infectious duration compared with CT. The coefficients for HPV types 6, 11, 16 and 18 ranged from 0.15 to 0.38. During the decade between Natsal-2 and Natsal-3, the Gini coefficient for CT did not change. The transmission model shows that higher STI treatment rates are expected to reduce prevalence and increase the Gini coefficient of STIs. In contrast, increased condom use reduces STI prevalence but does not affect the Gini coefficient.

**Conclusions:** Gini coefficients for STIs can help us to understand the distribution of STIs in the population, according to level of sexual activity, and could be used to inform STI prevention and treatment strategies.

**Subjects** Mathematical Biology, Epidemiology, Infectious Diseases, Public Health

**Keywords** *Chlamydia trachomatis*, *Mycoplasma genitalium*, HPV, Sexual behavior, Mathematical model, Transmission model, Gini coefficient, Lorenz curve

## INTRODUCTION

Understanding how sexually transmitted infections (STIs) are distributed among individuals is important both from a biological and from a public health perspective. Differences in STI prevalence within a population, between groups with varying levels of

Submitted 12 August 2019  
Accepted 19 December 2019  
Published 20 January 2020

Corresponding author  
Christian L. Althaus,  
[christian.althaus@alumni.ethz.ch](mailto:christian.althaus@alumni.ethz.ch)

Academic editor  
Charlie Zhang

Additional Information and  
Declarations can be found on  
page 10

DOI [10.7717/peerj.8434](https://doi.org/10.7717/peerj.8434)

© Copyright  
2020 Gsteiger et al.

Distributed under  
Creative Commons CC-BY 4.0

**OPEN ACCESS**

sexual activity, can provide information about biological and epidemiological characteristics of the infection. For example, an STI with a long infectious duration, such as human papillomavirus (HPV), will tend to be spread more evenly across a population than an STI with a short infectious duration, such as *Neisseria gonorrhoeae* (NG). This observation can be explained by the fact that STIs with short infectious durations require a higher rate of sexual partner change for sustained spread in the population. NG is thus more concentrated in a small subgroup of individuals with high sexual activity. Such ideas were initiated in the late 1970s and led to the concept of the “core group” ([Hethcote Herbert & Yorke, 1984](#)). In 1990, [Brunham & Plummer \(1990\)](#) inferred the size of core groups for various STIs from the biological parameters that describe transmissibility and infectious duration, and discussed the implications for selecting adequate STI control strategies.

The Gini coefficient can be used to quantify the degree of concentration of an STI in a population. Originally introduced for describing inequalities in income distributions ([Gini, 1912](#)), the Gini coefficient provides a general tool to measure the distribution or imbalance of a disease outcome in relation to an exposure variable or risk factor ([Lee, 1997](#)), such as the geographic location or sexual behavior. A Gini coefficient of zero denotes perfect equality where an infection is equally distributed across a population. For infections that are concentrated in specific subpopulations, the Gini coefficient can increase up to a maximal value of one. The Lorenz curve is a visual representation of the cumulative distribution of a disease when ordered according to the risk factor ([Lorenz, 1905](#)). The diagonal line on a Lorenz curve plot denotes perfect equality, for example, every subpopulation has the same prevalence of an STI.

Several groups have used Gini coefficients and Lorenz curves to describe how *Chlamydia trachomatis* (CT), NG, syphilis or herpes are distributed across different geographical regions in Canada ([Elliott et al., 2002](#)), the UK ([Monteiro, Lacey & Merrick, 2005](#)) and the US ([Kerani et al., 2005](#); [Chesson et al., 2010a, 2010b](#)). These findings have helped to summarize inequalities in STI distributions, assess the suitability of geographically targeted interventions, and provide insights into the epidemic phases of the STIs over time. [Chen, Ghani & Edmunds \(2009\)](#) were the first to apply the concept of Gini coefficients in mathematical transmission models. They proposed a metapopulation modeling framework that better captures the sociogeographic epidemiology of NG and compared the resulting Gini coefficients with empirical estimates.

The way in which modifiable factors, such as sexual activity and STI control interventions affect the Gini coefficient has been less-well studied. Previously, we described the distribution of CT infections among individuals with different sexual activity using Lorenz curves and Gini coefficients to calibrate dynamic transmission models ([Althaus et al., 2012b](#)). We used data from the second British Survey of Sexual Attitudes and Lifestyles (Natsal-2, 1999–2001) ([Fenton et al., 2001](#)), which included CT test results (samples were later tested for HPV [Johnson et al. \(2012\)](#)). The most recent survey (Natsal-3, 2010–2012) also provides information on HPV and *Mycoplasma genitalium* (MG) positivity and offers a unique opportunity to study relationships between sexual behavior and STI prevalence ([Sonnenberg et al., 2013, 2015](#); [Tanton et al., 2017](#)).

This study had two objectives. First, we wanted to estimate and compare the Gini coefficients for different STIs and over time using data from two Natsal surveys. Second, we used a mathematical transmission model to obtain general insights into how Gini coefficients are expected to change as a result of STI control interventions.

## METHODS

### Data

Natsal-3 is a population-based probability sample survey of sexual attitudes and lifestyles conducted in Britain (England, Scotland and Wales) and carried out from 2010 to 2012 (Erens *et al.*, 2013; Mercer *et al.*, 2013). The sample consists of 15,162 women and men aged 16–74 years. A subsample of participants aged 16–44 years who reported at least one sexual partner over their lifetime were asked to provide urine samples, resulting in laboratory confirmed STI test results from 2,665 women and 1,885 men (Sonnenberg *et al.*, 2013). Urine was tested for the presence of CT, MG, type-specific HPV, NG and HIV antibodies. To compare Gini coefficients for CT over time, we also used data from the Natsal-2 survey, which was carried out in 1999–2001 (Johnson *et al.*, 2001). This survey includes 11,161 women and men aged 16–44 years. Urine samples for ligase chain reaction testing for CT were available for a subset of 2,055 and 1,474 sexually active women and men aged 18–44 years (Fenton *et al.*, 2001). Unless otherwise stated, we used the subpopulations that provided urine samples for our analysis from both surveys. Sexual behavior and urine sample data were individually weighted to adjust for unequal selection probabilities and to correct for the age, gender and regional profiles in the survey sample. For simplicity, we did not include same-sex contacts for the sexual behavior variables because only 2.2% of the population reported a new same-sex partner during time period covered by Natsal-3. The full datasets of both surveys are available from the UK Data Archive at the University of Essex (<http://data-archive.ac.uk>).

### Statistical analysis

We used Lorenz curves to plot the cumulative proportion of specific STI infections ( $y_i$ ) as a function of the cumulative proportion of the population ( $x_i$ ), after population sub-groups  $i$  ( $i = 1, 2, \dots, n$ ) have been ranked according to their level of sexual activity. The Gini coefficient is defined as the area between the line of equality and the Lorenz curve over the total area below the line of equality:

$$G = 1 - \sum_{i=1}^n (x_i - x_{i-1})(y_i + y_{i-1}),$$

where  $x_0 = y_0 = 0$  and  $x_n = y_n = 1$ .

We derived Lorenz curves and estimated Gini coefficients for CT, MG and HPV types 6, 11, 16 and 18. We focused on these four HPV genotypes because they are present in the widely used quadrivalent vaccine and are frequently considered in dynamic transmission models (Brisson *et al.*, 2016). We did not include NG and HIV in our analysis because of the small numbers of positive tests. We used the number of new opposite-sex partners in the last year as the exposure variable summarizing sexual activity because of

its strong association with STI prevalence ([Althaus et al., 2012b](#)), and frequent use to parameterize dynamic transmission models ([Althaus et al., 2012a](#)). Owing to the larger sample size for female respondents and a potential bias resulting from lower test sensitivity to detect HPV infections in male urine ([Sonnenberg et al., 2013](#)), we focused our analysis on women and provide a separate analysis for men as [Supplemental Information](#). We constructed bootstrap confidence intervals (CIs) for the Gini coefficients and point-wise bootstrap confidence bands for the Lorenz curves by sampling with replacement ([Kerani et al., 2005](#); [Chesson et al., 2010a, 2010b](#); [Davison & Hinkley, 1997](#)). We calculated the 2.5th and 97.5th percentiles from 1,000 bootstrapped Gini coefficients and Lorenz curves.

### Transmission model

We adapted a previously described mathematical model of STI transmission ([Althaus et al., 2015](#)) to investigate how changes in infectious duration and transmissibility affect the prevalence and the Gini coefficient of an STI in a simulated population. We stratified the population according to sexual activity ([Hethcote Herbert & Yorke, 1984](#); [Garnett & Anderson, 1993](#)), that is, we assumed  $n$  different sexual activity classes with 0, 1, 2, ...,  $n-1$  new opposite-sex partners per year. For simplicity, we assumed that sexual activity and the natural history and transmission of the infection are the same in women and men. The susceptible-infected-susceptible transmission dynamics can be described by the following ordinary differential equation:

$$\frac{dy_i}{dt} = \mu \sum_{j=1}^n x_j y_j + \beta c_i (1 - y_i) \sum_{j=1}^n \rho_{ij} y_j - \gamma y_i - \mu y_i,$$

where  $y_i$  is the proportion of individuals in sexual activity class  $i$  who are infected, and  $x_i$  is the proportion of all individuals who belong to sexual activity class  $i$ . The first and last term of the equation describe how individuals can change their sexual activity class at rate  $\mu$  and be redistributed to either the same or another sexual activity class proportional to the size of sexual activity classes ([Althaus et al., 2015](#); [Fingerhuth et al., 2016](#)). The middle terms describe the process of transmission and the clearance of infection at rate  $\gamma$ . Susceptible individuals  $1 - y_i$  have an average of  $c_i$  new opposite-sex partners per year.  $\beta$  is the per partnership transmission probability and  $y_j$  is the probability that a partner in sexual activity class  $j$  is infected.  $\rho_{ij}$  represents the elements of the sexual mixing matrix ([Garnett et al., 1999](#))

$$\rho_{ij} = \epsilon \delta_{ij} + (1 - \epsilon) \frac{c_j x_j}{\sum_{l=1}^n c_l x_l},$$

where  $\delta_{ij}$  denotes the Kronecker delta (it is equal to 1 if  $i = j$  and to 0 otherwise).

The proportion of individuals in sexual activity classes  $x_i$  with  $c_i \in 0, 1, 2, \dots, n-1$  new opposite-sex partners per year were based on Natsal-2. All data for 18–44 year old women and men were pooled and weighted. Since the transmission model is primarily used for illustrative purposes, we did not include changes in sexual behavior, between Natsal-2 and

Natsal-3, which were small (Mercer *et al.*, 2013). We set  $\mu = 1$  per year as described previously (Althaus *et al.*, 2015; Fingerhuth *et al.*, 2016), and set  $\epsilon = 0$ , that is, we assumed random proportional mixing between different sexual activity classes (Garnett *et al.*, 1999). We then chose a particular combination of the infectious duration ( $1/\gamma$ ) and the per partnership transmission probability ( $\beta$ ) and ran the model into endemic equilibrium. We recorded the simulated STI prevalence and computed the Gini coefficient as described above, that is, by calculating the cumulative proportion of infections as a function of the cumulative proportion of the population, ranked by sexual activity  $i$ . We repeated this process for various combinations of the infectious duration and the per partnership transmission probability, which allowed us to map between the (unobservable) model parameters and the simulated (observable) summary measures prevalence and Gini coefficient.

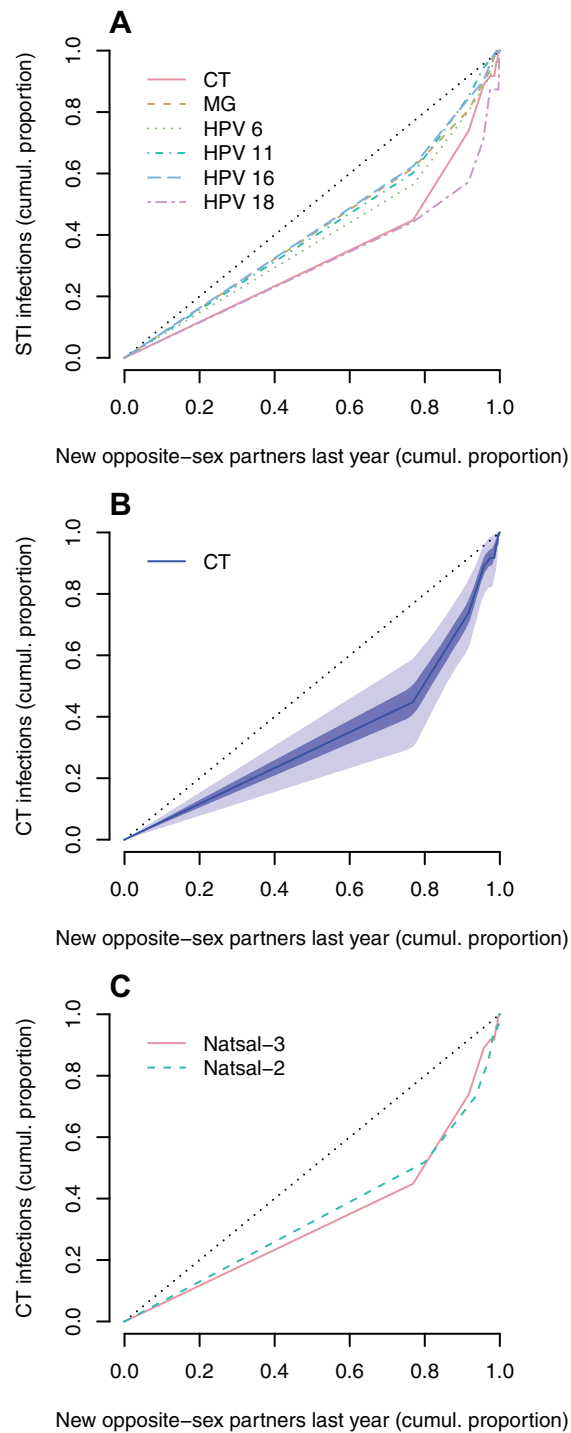
We further used the transmission model to investigate how two hypothetical CT control interventions affect infection prevalence and the Gini coefficient. First, we calibrated the infectious duration and the per partnership transmission probability such that the simulated CT prevalence and Gini coefficient correspond to the estimates from Natsal-2 ( $1/\gamma = 1.75$  years,  $\beta = 19\%$ ). Second, we simulated the expected changes in prevalence and the Gini coefficient as a result of (a) an increase in CT screening coverage aiming to detect asymptomatic CT cases, and (b) the effects of an educational campaign that leads to a change in sexual behavior and/or an increase in condom use. We assumed that the first intervention would reduce the overall infectious duration by 10%. For the second intervention, we assumed a 10% reduction in the product of the per partnership transmission probability ( $\beta$ ) and the number of opposite-sex partners ( $c_i$ ). Note that these hypothetical interventions do not necessarily predict the quantitative effects of real-world interventions; instead, they provide a qualitative picture of how prevalence and Gini coefficients are expected to change.

Data analyses and model simulations were performed in the R software environment for statistical computing (R Core Team, 2016). All code files are available on GitHub (<https://github.com/calthaus/gini>).

## RESULTS

### Lorenz curves and Gini coefficients

The Lorenz curves for MG and HPV types 6, 11 and 16 are closer to the diagonal line than the Lorenz curves for CT and HPV 18 (Fig. 1A). This indicates that CT and HPV-18 in women are more strongly associated with the number of new opposite-sex partners in the last year than MG and the other type-specific HPV. The Gini coefficients mirror this observation and are higher for CT (0.33) and HPV 18 (0.38) than for MG and the different HPV types ( $\leq 0.22$ ) (Table 1). However, the bootstrapped confidence intervals for the Lorenz curves are wide (Fig. 1B), resulting in considerable uncertainty in the estimated Gini coefficients. The Lorenz curves for CT for the two survey periods of Natsal-2 (1999–2001) and Natsal-3 (2010–2012) are similar (Fig. 1C) with a Gini coefficient in Natsal-2 of 0.30 (95% CI [0.12–0.50]) and in Natsal-3 of 0.33 (95% CI [0.18–0.49]).

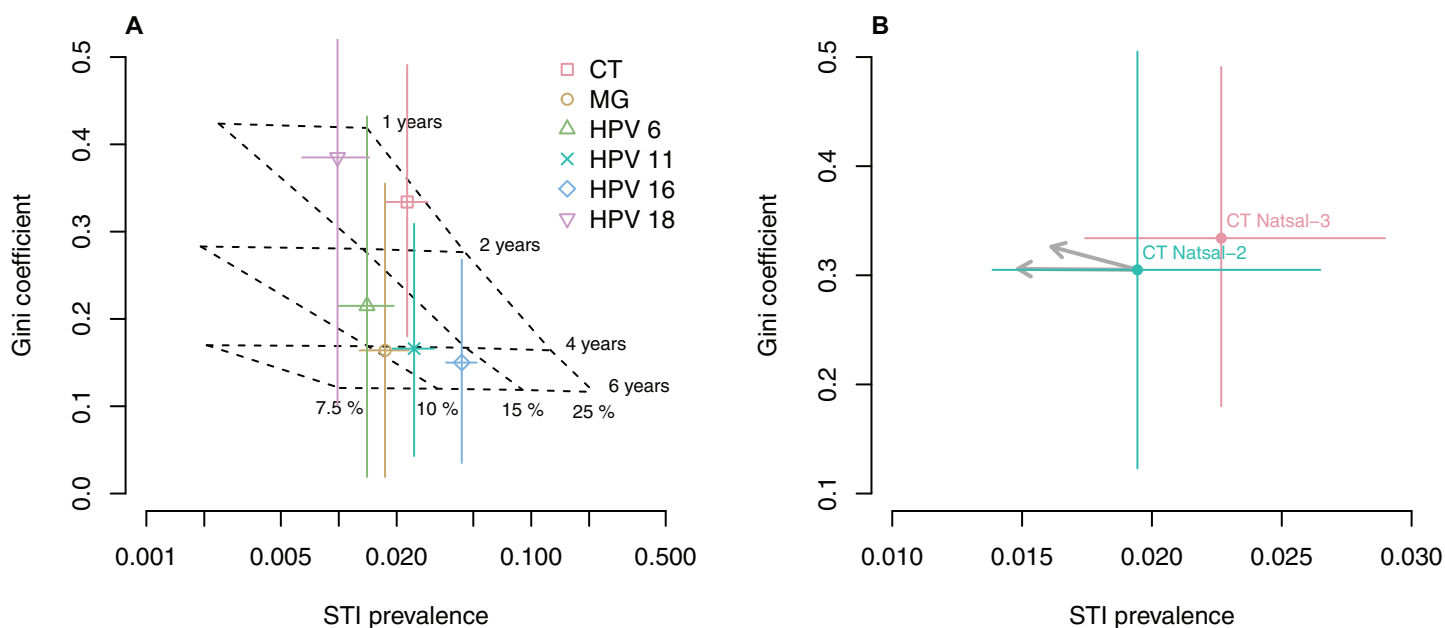


**Figure 1** Lorenz curves representing the cumulative proportion of STI infections in women as a function of the cumulative proportion of the population, after population sub-groups have been ranked by the number of new opposite-sex partners in the last year. (A) Lorenz curves for different STIs. Data: Natsal-3. (B) Uncertainty around Lorenz curve for CT. The blue areas represent point-wise 50% (dark blue) and 95% (light blue) confidence bands. Data: Natsal-3. (C) Comparison of Lorenz curves for CT between Natsal-2 (dashed line) and Natsal-3 (solid line). In all graphs, the diagonal line (black dotted line) denotes perfect equality, that is, an equal dispersion of the infection across population sub-groups.

Full-size DOI: [10.7717/peerj.8434/fig-1](https://doi.org/10.7717/peerj.8434/fig-1)

**Table 1** Estimated Gini coefficients for different sexually transmitted infections in women.

Infection	Gini coefficient	95% Confidence interval (CI)
<i>Chlamydia trachomatis</i>	0.33	0.18–0.49
<i>Mycoplasma genitalium</i>	0.16	0.02–0.36
HPV 6	0.22	0.02–0.43
HPV 11	0.17	0.04–0.31
HPV 16	0.15	0.04–0.27
HPV 18	0.38	0.10–0.64



**Figure 2** Relationship between Gini coefficient, STI prevalence, infectious duration and transmissibility. (A) Gini coefficients and STI prevalence for women in Natsal-3 (colored dots). Modelled values for different combinations of the infectious duration and the per partnership transmission probability are projected on the graph (dashed grid). (B) Expected impact of control measures on Gini coefficients and prevalence of female CT between Natsal-2 and Natsal-3. The black arrows denote a 10% reduction in the per partnership transmission probability (horizontal arrows) or the infectious duration (diagonal arrows). [Full-size !\[\]\(86257f54800c9844bc7e863bea396fba\_img.jpg\) DOI: 10.7717/peerj.8434/fig-2](https://doi.org/10.7717/peerj.8434/fig-2)

We used the transmission model to perform a mapping between model parameters and the simulated STI prevalence and Gini coefficient. Within the parameter ranges that are representative for the considered STIs, we found a close to linear relationship between the Gini coefficient, infection prevalence, infectious duration and per partnership transmissibility (Fig. 2A, dashed grid). STIs with a short infectious duration (e.g., 1 year) require frequent sexual partner changes (i.e., a high number of opposite-sex partners) and are therefore characterized by a high Gini coefficient. Longer infectious durations increase prevalence, facilitate STI transmission between individuals with a low number of opposite-sex partners, and consequently decrease the Gini coefficient. Interestingly, different values for the per partnership transmission probability only influence prevalence but do not affect the Gini coefficient. These insights from the transmission model potentially allow the inference of biological parameters for the different STIs in Natsal-3

(Fig. 2A, colored dots). Although the confidence intervals and the associated uncertainty are large, CT and HPV 18 seem to be consistent with an infectious duration between 1 and 2 years. MG and the other HPV types are consistent with longer infectious durations.

### STI control interventions

We used the transmission model to examine how two hypothetical control interventions for CT affect the Gini coefficient and infection prevalence. First, we assumed that the increase in CT screening between the two survey periods of Natsal-2 (1999–2001) and Natsal-3 (2010–2012) through the National Chlamydia Screening Program in England (*Chandra et al., 2017*) has resulted in a reduction in the overall infectious duration. The transmission model predicts that this would result in an increase of the Gini coefficient with a concurrent drop in prevalence (Fig. 2B). In contrast, the point estimates of the Gini coefficient and prevalence both show a slight, albeit no statistically significant increase between Natsal-2 and Natsal-3. The expected changes in prevalence and Gini coefficient might be relatively small, however, and may remain within the 95% CIs of the point estimates. Second, we simulated the effects of a decrease in the number of opposite-sex partners and/or an increase in condom. Such a behavior change would be expected to reduce the prevalence of CT without affecting the Gini coefficient.

### DISCUSSION

Building upon earlier work (*Althaus et al., 2012b*), we constructed Lorenz curves and estimated Gini coefficients in women to investigate how different STIs are distributed according to sexual activity. Gini coefficients for CT and HPV 18 appear to be higher than for MG and HPV 6, 11 and 16. We found no evidence that the Gini coefficient for CT changed between the two survey periods of Natsal-2 and Natsal-3. Using a mathematical model of STI transmission, we found that a CT screening intervention should reduce prevalence and increase the Gini coefficient, whilst condom use reduced prevalence but did not affect the Gini coefficient.

A main strength of this study was the availability of Natsal-2 and Natsal-3, two very large data sets that measure both STI positivity and self-reported sexual behavior in probability samples of the British general population. These comprehensive data sets allow comparison between different STIs and over time. Calculating infection prevalence and Gini coefficients is straightforward if suitable data are available. In contrast, obtaining biological parameters that determine the transmission dynamics, such as the infectious duration or the transmission probability, are notoriously difficult to obtain (*Althaus et al., 2010, Althaus, Heijne & Low, 2012*). In this study, we used a mathematical model of STI transmission with a detailed description of different sexual activity classes (*Althaus et al., 2015*) to explore the relationship between Gini coefficient, infection prevalence, infectious duration and transmissibility.

There are several limitations to this study. First, despite the large overall sizes of the two Natsal surveys, the relatively low prevalence of STIs in the general population (*Fenton et al., 2001; Johnson et al., 2012; Sonnenberg et al., 2013, 2015*) resulted in relatively large uncertainties in the Lorenz curves and the corresponding Gini coefficients, particularly for



males (see [Supplemental Information](#)). Owing to the small sample sizes, we pooled data over all age groups and restricted our analyses to the whole survey population. Investigating sex- or age-specific differences in Gini coefficients would certainly be interesting but is currently not feasible. Second, the limited sample size did not allow us to calculate Gini coefficients for NG and HIV, which have a very low prevalence, and arguably high Gini coefficient ([Sonnenberg et al., 2013](#)). Third, the comparison of prevalence and Gini coefficients of CT between Natsal-2 and Natsal-3 should also be treated with caution. The two surveys used different laboratory tests and were not powered to detect changes in CT prevalence ([Sonnenberg et al., 2013](#)). Fourth, we defined the exposure variable as the number of new opposite-sex partners in the last year. Using other exposure variables for our analysis would obviously affect the Lorenz curves and the Gini coefficients, but would not necessarily be applicable for the mapping between model parameters and the summary measures. Fifth, mathematical modeling necessarily involves several assumptions and simplifications. As in the data analysis, we did not stratify the population according to age, assumed the sexual behavior in women and men to be the same, and considered the general population of those reporting sex with opposite-sex partners as a whole. Changes in sexual behavior between Natsal-2 and Natsal-3 were minimal ([Mercer et al., 2013](#)), so we did not take these into account. We assumed fully proportional mixing which typically results in the best description of infection prevalence in different sexual activity classes in models with a constant per partnership transmission probability ([Althaus et al., 2012a, 2015](#); [Garnett et al., 1999](#)). We also did not consider sex-specific differences in the infectious duration and the transmissibility of the various STIs, which might limit the application of Gini coefficients for the inference of these parameters. Further, we assumed that individuals who clear an infection can become reinfected, although CT and type-specific HPV infections might confer temporal immunity ([Brunham & Rey-Ladino, 2005](#); [Bogaards et al., 2010](#)). Together, these modeling assumptions highlight that the insights from our conceptual transmission model are primarily qualitative and that quantitative results should be treated with caution.

The calculated Gini coefficients and prevalence of CT and HPV 18 in women in Natsal-3 suggest an infectious duration of 1–2 years, which is in good agreement with previous estimates ([Althaus et al., 2010](#); [Insinga et al., 2007](#); [Johnson, Elfström & Edmunds, 2012](#); [Price et al., 2013](#)). Our mapping indicates that the infectious durations for the other high-risk HPV type 16 and low-risk HPV types 6 and 11 could be longer than 2 years. This interpretation would contrast with previous studies that estimate similar infectious durations for HPV-16 and HPV-18 ([Insinga et al., 2007](#); [Johnson, Elfström & Edmunds, 2012](#)), and shorter infectious durations of less than a year for HPV 6 and 11 ([Insinga et al., 2007](#)). The discrepancy could be a result of ignoring the effects of temporal immunity to reinfection. The infectious duration for the other bacterial STI, MG, seems to be longer than for CT. There is considerable uncertainty regarding the infectious duration of MG. One analysis, which used data from a study of female students in London (UK), estimated the mean infectious duration at 15 months ([Smieszek & White, 2016](#)), which is in the same range as CT. The per partnership transmission probability is a highly model-dependent parameter and depends on the type of sexual partnerships that are

considered. It is maybe not surprising that our mapping, which suggests relatively low per partnership transmission probabilities of 10–25%, is not consistent with estimates from other modeling studies (*Althaus, Heijne & Low, 2012; Bogaards et al., 2010*).

Our findings allowed us to interpret differences in Gini coefficients and changes over time for different STIs, illustrating that Gini coefficients can serve beyond their original role as simple statistical measures of exposure-outcome associations. We found that changes in the transmission probability only influence infection prevalence. This means that while decreasing the transmission probability (e.g., through increased condom use) decreases the overall burden of an STI, it does not affect how an STI is distributed among individuals with different sexual activity. Hence, the target groups for future control interventions should remain the same. In contrast, we showed that changes in the infectious duration (e.g., through increased testing and treatment uptake) affects both the prevalence and Gini coefficient of an STI. A stronger concentration of the infections among individuals with increased sexual activity would require a change in the target groups for control interventions. A prerequisite for this newly proposed use of Gini coefficients for STIs will be the availability of large data sets with a sufficiently high infection prevalence. These could either be population-based surveys or smaller cohorts that focus on individuals with an increased risk of acquiring STIs, such as men who have sex with men.

## CONCLUSION

In summary, our study illustrates that the Gini coefficient for measuring the distribution of an STI among individuals with different sexual activity represents a simple proxy measure, which combines epidemiological and behavioral data. Estimating Gini coefficients for the general population or particular sub-populations, in combination with mathematical modeling, has the potential to make inference of biological parameters that determine STI transmission and to assess the impact of control measures.

## ACKNOWLEDGEMENTS

Natsal-3 is a collaboration between University College London (UCL), London School of Hygiene and Tropical Medicine (LSHTM), National Centre for Social Research (NatCen), Public Health England (PHE), and the University of Manchester. Natsal-2 was a collaboration between UCL, LSHTM, NatCen and the Health Protection Agency (now PHE). We thank the study participants, the team of interviewers from NatCen Social Research, and operations and computing staff from NatCen Social Research. Natsal-3 was approved by the Oxfordshire Research Ethics Committee A (Ref: 10/H0604/27); Natsal-2 was approved by the University College Hospital and North Thames Multi-Centre Research Ethics Committee and all the Local Research Ethics Committees in Britain.

## ADDITIONAL INFORMATION AND DECLARATIONS

### Funding

Natsal-3 was supported by grants from the Medical Research Council (G0701757); and the Wellcome Trust (084840); with contributions from the Economic and Social Research

Council and Department of Health. Sandro Gsteiger and Christian L. Althaus were funded by the Swiss National Science Foundation (Grants: 135654 and 136737, respectively). The funders had no role in study design, data collection and analysis, decision to publish, or preparation of the manuscript.

### Grant Disclosures

The following grant information was disclosed by the authors:

Medical Research Council: G0701757.

Wellcome Trust: 084840.

Economic and Social Research Council and Department of Health.

Swiss National Science Foundation: 135654 and 136737.

### Competing Interests

Christian L. Althaus is an Academic Editor for PeerJ. All other authors declare no competing interests.

### Author Contributions

- Sandro Gsteiger conceived and designed the experiments, performed the experiments, analyzed the data, prepared figures and/or tables, authored or reviewed drafts of the paper, and approved the final draft.
- Nicola Low conceived and designed the experiments, analyzed the data, authored or reviewed drafts of the paper, and approved the final draft.
- Pam Sonnenberg analyzed the data, authored or reviewed drafts of the paper, and approved the final draft.
- Catherine H. Mercer analyzed the data, authored or reviewed drafts of the paper, and approved the final draft.
- Christian L. Althaus conceived and designed the experiments, performed the experiments, analyzed the data, prepared figures and/or tables, authored or reviewed drafts of the paper, and approved the final draft.

### Data Availability

The following information was supplied regarding data availability:

All data and R code files are available on the following GitHub repository:  
<https://github.com/calthaus/gini>.

### Supplemental Information

Supplemental information for this article can be found online at <http://dx.doi.org/10.7717/peerj.8434#supplemental-information>.

## REFERENCES

- Althaus CL, Choisy M, Alizon S, The CSF Group. 2015. Number of sex acts matters for heterosexual transmission and control of *Chlamydia trachomatis*. *PeerJ Preprints* 3:e1164 DOI 10.7287/peerj.preprints.940v1.

- Althaus CL, Heijne JCM, Herzog SA, Roellin A, Low N, Goldstein E. 2012a.** Individual and population level effects of partner notification for *Chlamydia trachomatis*. *PLOS ONE* 7(12):e51438 DOI 10.1371/journal.pone.0051438.
- Althaus CL, Heijne JCM, Low N. 2012.** Towards more robust estimates of the transmissibility of *Chlamydia trachomatis*. *Sexually Transmitted Diseases* 39(5):402–404 DOI 10.1097/OLQ.0b013e318248a550.
- Althaus CL, Heijne JCM, Roellin A, Althaus CL. 2010.** Transmission dynamics of *Chlamydia trachomatis* affect the impact of screening programmes. *Epidemics* 2(3):123–131 DOI 10.1016/j.epidem.2010.04.002.
- Althaus CL, Turner KME, Schmid BV, Heijne JCM, Kretzschmar M, Low N. 2012b.** Transmission of *Chlamydia trachomatis* through sexual partnerships: a comparison between three individual-based models and empirical data. *Journal of the Royal Society Interface* 9(66):136–146 DOI 10.1098/rsif.2011.0131.
- Bogaards JA, Xiridou M, Coupe VMH, Meijer CJLM, Wallinga J, Berkhof J. 2010.** Model-based estimation of viral transmissibility and infection-induced resistance from the age-dependent prevalence of infection for 14 high-risk types of human papillomavirus. *American Journal of Epidemiology* 171(7):817–825 DOI 10.1093/aje/kwp466.
- Brisson M, Bénard É, Drolet M, Bogaards JA, Baussano I, Vänskä S, Jit M, Boily MC, Smith MA, Berkhof J, Canfell K, Chesson HW, Burger EA, Choi YH, Freiesleben De Blasio B, De Vlas SJ, Guzzetta G, Hontelez JAC, Horn J, Jepsen MR, Kim JJ, Lazzarato F, Matthijsse SM, Mikolajczyk R, Pavelyev A, Pillsbury M, Shafer LA, Tully SP, Turner HC, Usher C, Walsh C. 2016.** Population-level impact, herd immunity, and elimination after human papillomavirus vaccination: a systematic review and meta-analysis of predictions from transmission-dynamic models. *Lancet Public Health* 1(1):e8–e17 DOI 10.1016/S2468-2667(16)30001-9.
- Brunham RC, Plummer FA. 1990.** A general model of sexually transmitted disease epidemiology and its implications for control. *Medical Clinics of North America* 74(6):1339–1352 DOI 10.1016/S0025-7125(16)30484-9.
- Brunham RC, Rey-Ladino J. 2005.** Immunology of chlamydia infection: implications for a *Chlamydia trachomatis* vaccine. *Nature Reviews Immunology* 5(2):149–161 DOI 10.1038/nri1551.
- Chandra NL, Soldan K, Dangerfield C, Sile B, Duffell S, Talebi A, Choi YH, Hughes G, Woodhall SC. 2017.** Filling in the gaps: estimating numbers of chlamydia tests and diagnoses by age group and sex before and during the implementation of the English National Screening Programme, 2000 to 2012. *Eurosurveillance* 22(5):30453 DOI 10.2807/1560-7917.ES.2017.22.5.30453.
- Chen MI, Ghani AC, Edmunds WJ. 2009.** A metapopulation modelling framework for gonorrhoea and other sexually transmitted infections in heterosexual populations. *Journal of the Royal Society Interface* 6(38):775–791 DOI 10.1098/rsif.2008.0394.
- Chesson HW, Sternberg M, Leichliter JS, Aral SO. 2010a.** Changes in the state-level distribution of primary and secondary syphilis in the USA, 1985–2007. *Sexually Transmitted Infections* 86(Suppl. 3):iii58–iii62.
- Chesson HW, Sternberg M, Leichliter JS, Aral SO. 2010b.** The distribution of chlamydia, gonorrhoea and syphilis cases across states and counties in the USA, 2007. *Sexually Transmitted Infections* 86(Suppl. 3):iii52–iii57.
- Davison AC, Hinkley DV. 1997.** *Bootstrap methods and their application*. First Edition. New York: Cambridge University Press.

- Elliott LJ, Blanchard JF, Beaudoin CM, Green CG, Nowicki DL, Matusko P, Moses S. 2002.** Geographical variations in the epidemiology of bacterial sexually transmitted infections in Manitoba, Canada. *Sexually Transmitted Infections* **78**(Suppl. 1):i139–i144 DOI [10.1136/sti.78.suppl\\_1.i139](https://doi.org/10.1136/sti.78.suppl_1.i139).
- Erens B, Phelps A, Clifton S, Mercer CH, Tanton C, Hussey D, Sonnenberg P, Macdowall W, Field N, Datta J, Mitchell K, Copas AJ, Wellings K, Johnson AM. 2013.** Methodology of the third British National Survey of Sexual Attitudes and Lifestyles (Natsal-3). *Sexually Transmitted Infections* **90**(2):84–89 DOI [10.1136/sextrans-2013-051359](https://doi.org/10.1136/sextrans-2013-051359).
- Fenton KA, Korovessis C, Johnson AM, McCadden A, McManus S, Wellings K, Mercer CH, Carder C, Copas AJ, Nanchahal K, Macdowall W, Ridgway G, Field J, Erens B. 2001.** Sexual behaviour in Britain: reported sexually transmitted infections and prevalent genital *Chlamydia trachomatis* infection. *Lancet* **358**(9296):1851–1854 DOI [10.1016/S0140-6736\(01\)06886-6](https://doi.org/10.1016/S0140-6736(01)06886-6).
- Fingerhuth SM, Bonhoeffer S, Low N, Althaus CL. 2016.** Antibiotic-resistant neisseria gonorrhoeae spread faster with more treatment, not more sexual partners. *PLOS Pathogens* **12**(5):e1005611 DOI [10.1371/journal.ppat.1005611](https://doi.org/10.1371/journal.ppat.1005611).
- Garnett GP, Anderson RM. 1993.** Factors controlling the spread of HIV in heterosexual communities in developing countries: patterns of mixing between different age and sexual activity classes. *Philosophical Transactions of the Royal Society of London. Series B: Biological Sciences* **342**:137–159.
- Garnett GP, Mertz KJ, Finelli L, Levine WC, St. Louis ME. 1999.** The transmission dynamics of gonorrhoea: modelling the reported behaviour of infected patients from Newark, New Jersey. *Philosophical Transactions of the Royal Society of London. Series B: Biological Sciences* **354**(1384):787–797 DOI [10.1098/rstb.1999.0431](https://doi.org/10.1098/rstb.1999.0431).
- Gini CW. 1912.** *Variability and mutability, contribution to the study of statistical distributions and relations: studi economico-giuridici della R Universita de Cagliari*. Bologna: C. Cuppini.
- Hethcote Herbert W, Yorke JA. 1984.** *Gonorrhea transmission dynamics and control*. Berlin: Springer.
- Insinga RP, Dasbach EJ, Elbasha EH, Liaw K-L, Barr E. 2007.** Incidence and duration of cervical human papillomavirus 6, 11, 16 and 18 infections in young women: an evaluation from multiple analytic perspectives. *Cancer Epidemiology Biomarkers & Prevention* **16**(4):709–715 DOI [10.1158/1055-9965.EPI-06-0846](https://doi.org/10.1158/1055-9965.EPI-06-0846).
- Johnson HC, Elfström KM, Edmunds WJ. 2012.** Inference of type-specific HPV transmissibility, progression and clearance rates: a mathematical modeling approach. *PLOS ONE* **7**(11):e49614 DOI [10.1371/journal.pone.0049614](https://doi.org/10.1371/journal.pone.0049614).
- Johnson AM, Mercer CH, Beddows S, De Silva N, Desai S, Howell-Jones R, Carder C, Sonnenberg P, Fenton KA, Lowndes C, Soldan K. 2012.** Epidemiology of, and behavioural risk factors for, sexually transmitted human papillomavirus infection in men and women in Britain. *Sexually Transmitted Infections* **88**(3):212–217 DOI [10.1136/sextrans-2011-050306](https://doi.org/10.1136/sextrans-2011-050306).
- Johnson AM, Mercer CH, Erens B, Copas AJ, McManus S, Wellings K, Fenton KA, Korovessis C, Macdowall W, Nanchahal K, Purdon S, Field J. 2001.** Sexual behaviour in Britain: partnerships, practices, and HIV risk behaviours. *Lancet* **358**(9296):1835–1842 DOI [10.1016/S0140-6736\(01\)06883-0](https://doi.org/10.1016/S0140-6736(01)06883-0).
- Kerani RP, Handcock MS, Handsfield HH, Holmes KK. 2005.** Comparative geographic concentrations of 4 sexually transmitted infections. *American Journal of Public Health* **95**(2):324–330 DOI [10.2105/AJPH.2003.029413](https://doi.org/10.2105/AJPH.2003.029413).
- Lee WC. 1997.** Characterizing exposure-disease association in human populations using the Lorenz curve and Gini index. *Statistics in Medicine* **16**:729–739 DOI [10.1002/\(SICI\)1097-0258\(19970415\)16:7<729::AID-SIM491>3.0.CO;2-A](https://doi.org/10.1002/(SICI)1097-0258(19970415)16:7<729::AID-SIM491>3.0.CO;2-A).

- Lorenz MO. 1905.** Methods of measuring the concentration of wealth. *Publications of the American Statistical Association* **9(70)**:209–219 DOI [10.2307/2276207](https://doi.org/10.2307/2276207).
- Mercer CH, Tanton C, Prah P, Erens B, Sonnenberg P, Clifton S, Macdowall W, Lewis R, Field N, Datta J, Copas AJ, Phelps A, Wellings K, Johnson AM. 2013.** Changes in sexual attitudes and lifestyles in Britain through the life course and over time: findings from the National Surveys of Sexual Attitudes and Lifestyles (Natsal). *Lancet* **382(9907)**:1781–1794 DOI [10.1016/S0140-6736\(13\)62035-8](https://doi.org/10.1016/S0140-6736(13)62035-8).
- Monteiro EF, Lacey CJN, Merrick D. 2005.** The interrelation of demographic and geospatial risk factors between four common sexually transmitted diseases. *Sexually Transmitted Infections* **81(1)**:41–46 DOI [10.1136/sti.2004.009431](https://doi.org/10.1136/sti.2004.009431).
- Price MJ, Ades AE, Angelis DD, Welton NJ, Macleod J, Soldan K, Turner K, Simms I, Horner PJ. 2013.** Mixture-of-exponentials models to explain heterogeneity in studies of the duration of *Chlamydia trachomatis* infection. *Statistics in Medicine* **32(9)**:1547–1560 DOI [10.1002/sim.5603](https://doi.org/10.1002/sim.5603).
- R Core Team. 2016.** *R: a language and environment for statistical computing*. Vienna: The R Foundation for Statistical Computing. Available at <http://www.R-project.org/>.
- Smieszek T, White PJ. 2016.** Apparently-different clearance rates from cohort studies of *Mycoplasma genitalium* are consistent after accounting for incidence of infection, recurrent infection, and study design. *PLOS ONE* **11(2)**:e0149087 DOI [10.1371/journal.pone.0149087](https://doi.org/10.1371/journal.pone.0149087).
- Sonnenberg P, Clifton S, Beddows S, Field N, Soldan K, Tanton C, Mercer CH, Da Silva FC, Alexander S, Copas AJ, Phelps A, Erens B, Prah P, Macdowall W, Wellings K, Ison CA, Johnson AM. 2013.** Prevalence, risk factors, and uptake of interventions for sexually transmitted infections in Britain: findings from the National Surveys of Sexual Attitudes and Lifestyles (Natsal). *Lancet* **382(9907)**:1795–1806 DOI [10.1016/S0140-6736\(13\)61947-9](https://doi.org/10.1016/S0140-6736(13)61947-9).
- Sonnenberg P, Ison CA, Clifton S, Field N, Tanton C, Soldan K, Beddows S, Alexander S, Khanom R, Saunders P, Copas AJ, Wellings K, Mercer CH, Johnson AM. 2015.** Epidemiology of *Mycoplasma genitalium* in British men and women aged 16–44 years: evidence from the third National Survey of Sexual Attitudes and Lifestyles (Natsal-3). *International Journal of Epidemiology* **44(6)**:1982–1994 DOI [10.1093/ije/dyv194](https://doi.org/10.1093/ije/dyv194).
- Tanton C, Meshar D, Beddows S, Soldan K, Clifton S, Panwar K, Field N, Mercer CH, Johnson AM, Sonnenberg P. 2017.** Human papillomavirus (HPV) in young women in Britain: population-based evidence of the effectiveness of the bivalent immunisation programme and burden of quadrivalent and 9-valent vaccine types. *Papillomavirus Research* **3**:36–41 DOI [10.1016/j.pvr.2017.01.001](https://doi.org/10.1016/j.pvr.2017.01.001).