

## Bulletin of the Geological Society of Greece

Vol. 54, 2019



### The geology of Mount Orliakas and the Pindos Ophiolite, Greece.

Wong Kevin  
Department of Earth Sciences, University of Cambridge, Downing Street, Cambridge, CB2 3EQ, UK and School of Earth and Environment University of Leeds, LS2 9JT, UK

Draper Kathryn  
Feng Linshu  
Department of Earth Sciences, University of Cambridge, Downing Street, Cambridge, CB2 3EQ, UK

Hawkins Philip  
Oakley Samuel  
Zheng Xiao  
<https://doi.org/10.12681/bgsg.19376>

Copyright © 2019 Kevin Wong



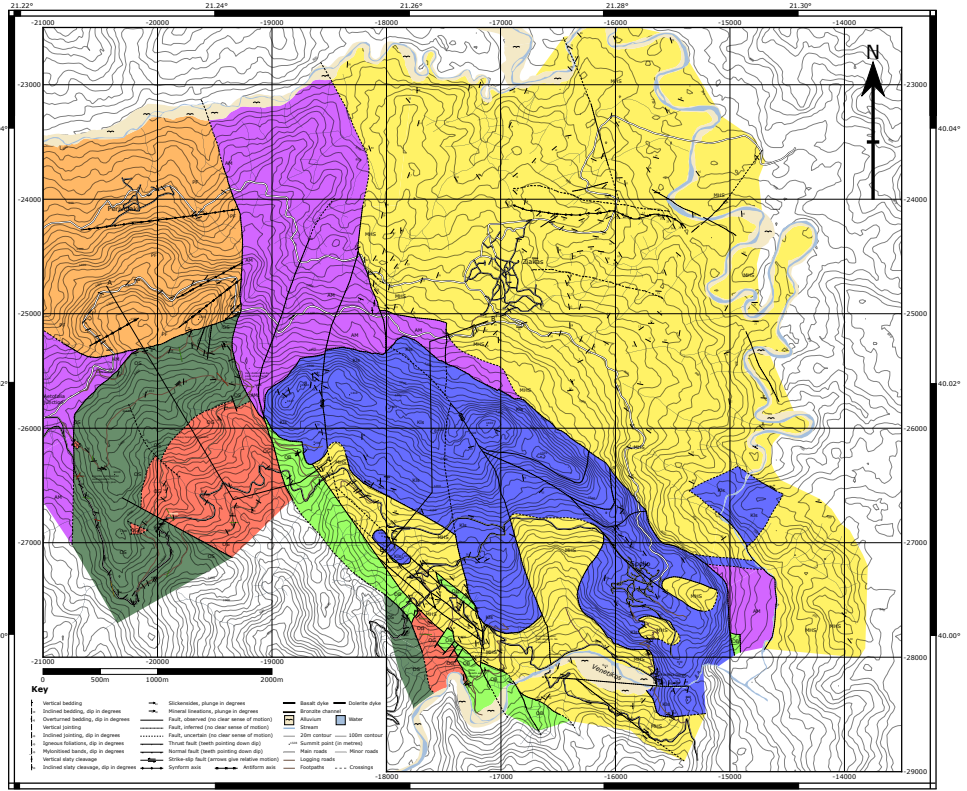
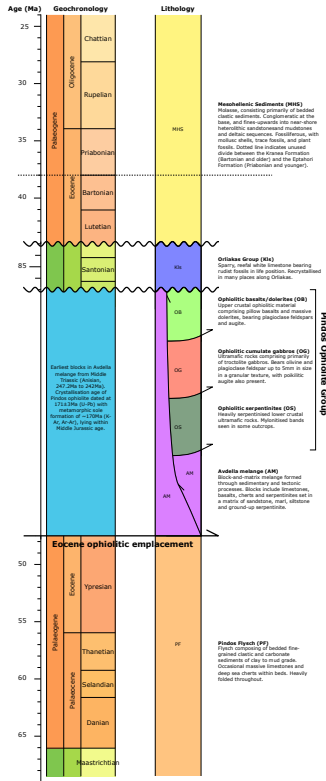
#### To cite this article:

Wong, K., Draper, K., Feng, L., Hawkins, P., Oakley, S., & Zheng, X. (2019). The geology of Mount Orliakas and the Pindos Ophiolite, Greece.. *Bulletin of the Geological Society of Greece*, 54(1), 144-177.  
doi:<https://doi.org/10.12681/bgsg.19376>

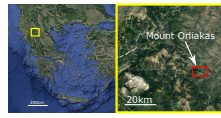
# Geological Map of Mount Oriakas and the Pindos Ophiolite, Greece

Kevin Wong, Kathryn Draper, Linshu Feng, Philip Hawkins, Samuel Oakley, Xiao Xu Zheng  
 Mapped between 10/08/16 and 23/09/16  
 Scale: 1:125,000 (Scale to 500m)  
 Topography based on ACTAR QZCPR V2 (October 2011)  
 Corresponds to Helios Military Geographical Service 1:5000 sheets 4240-5, -6, -7, -8, and 4250-1, -2.

## Stratigraphic column



## Location of mapped area



## Cross sections

