





## RESEARCH ARTICLE

# Parkinson's Disease Age at Onset Genome-Wide Association Study: Defining Heritability, Genetic Loci, and $\alpha$ -Synuclein Mechanisms

Cornelis Blauwendraat, PhD,<sup>1,2\*</sup> Karl Heilbron, PhD,<sup>3</sup> Costanza L. Vallergera, MSc,<sup>4</sup> Sara Bandres-Ciga, PhD,<sup>1</sup> Rainer von Coelln, MD,<sup>5</sup>  Lasse Pihlstrøm, MD, PhD,<sup>6</sup> Javier Simón-Sánchez, PhD,<sup>7,8</sup> Claudia Schulte, PhD,<sup>7,8</sup>  Manu Sharma, PhD,<sup>9</sup> Lynne Krohn, MSc,<sup>10,11</sup> Ari Siitonen, PhD,<sup>12,13</sup> Hirotaka Iwaki, MD, PhD,<sup>1,14</sup> Hampton Leonard, MSc,<sup>1</sup> Alastair J. Noyce, MD, PhD,<sup>15,16</sup> Manuela Tan, BA,<sup>16</sup> J. Raphael Gibbs, PhD,<sup>1</sup> Dena G. Hernandez, PhD,<sup>1</sup> Sonja W. Scholz, MD, PhD,<sup>2</sup>  Joseph Jankovic, MD,<sup>17</sup> Lisa M. Shulman, MD,<sup>5</sup> Suzanne Lesage, PhD,<sup>18</sup> Jean-Christophe Corvol, MD, PhD,<sup>18</sup> Alexis Brice, MD, PhD,<sup>18</sup> Jacobus J. van Hilten, MD, PhD,<sup>19</sup> Johan Marinus, MD, PhD,<sup>19</sup> The 23andMe Research Team, Johanna Eerola-Rautio, MD, PhD,<sup>20</sup> Pentti Tienari, MD, PhD,<sup>20</sup> Kari Majamaa, MD,<sup>12,13</sup> Mathias Toft, MD, PhD,<sup>6,21</sup> Donald G. Grosset, MD, PhD,<sup>22,23</sup> Thomas Gasser, MD, PhD,<sup>7,8</sup> Peter Heutink, PhD,<sup>7,8</sup> Joshua M. Shulman, MD, PhD,<sup>17,24,25</sup> Nicolas Wood, MD, PhD,<sup>16</sup> John Hardy, PhD,<sup>26</sup> Huw R. Morris, MD, PhD,<sup>16</sup> David A. Hinds, PhD,<sup>3</sup> Jacob Gratten, PhD,<sup>4,27</sup> Peter M. Visscher, PhD,<sup>4,28</sup> Ziv Gan-Or, MD, PhD,<sup>10,11,29</sup>  Mike A. Nalls, PhD,<sup>1,30</sup> and Andrew B. Singleton, PhD,<sup>1\*</sup> for the International Parkinson's Disease Genomics Consortium (IPDGC)

<sup>1</sup>Laboratory of Neurogenetics, National Institute on Aging, National Institutes of Health, Bethesda, Maryland, USA

<sup>2</sup>Neurodegenerative Diseases Research Unit, National Institute of Neurological Disorders and Stroke, National Institutes of Health, Bethesda, Maryland, USA

<sup>3</sup>23andMe, Inc., Mountain View, California, USA

<sup>4</sup>Institute for Molecular Bioscience, The University of Queensland, Brisbane, Australia

<sup>5</sup>Department of Neurology, University of Maryland School of Medicine, Baltimore, Maryland, USA

<sup>6</sup>Department of Neurology, Oslo University Hospital, Oslo, Norway

<sup>7</sup>Department for Neurodegenerative Diseases, Hertie Institute for Clinical Brain Research, University of Tübingen, Tübingen, Germany

<sup>8</sup>German Center for Neurodegenerative Diseases (DZNE), Tübingen, Germany

<sup>9</sup>Centre for Genetic Epidemiology, Institute for Clinical Epidemiology and Applied Biometry, University of Tübingen, Germany

<sup>10</sup>Department of Human Genetics, McGill University, Montreal, Quebec, Canada

<sup>11</sup>Montreal Neurological Institute, McGill University, Montreal, Quebec, Canada

<sup>12</sup>Institute of Clinical Medicine, Department of Neurology, University of Oulu, Oulu, Finland

<sup>13</sup>Department of Neurology and Medical Research Center, Oulu University Hospital, Oulu, Finland

<sup>14</sup>The Michael J Fox Foundation for Parkinson's Research, New York, New York, USA

<sup>15</sup>Preventive Neurology Unit, Wolfson Institute of Preventive Medicine, Queen Mary University of London, London, United Kingdom

<sup>16</sup>Department of Clinical and Movement Neurosciences, UCL Queen Square Institute of Neurology, London, United Kingdom

<sup>17</sup>Parkinson's Disease Center and Movement Disorders Clinic, Department of Neurology, Baylor College of Medicine, Houston, Texas, USA

<sup>18</sup>Inserm U1127, Sorbonne Universités, UPMC Univ Paris 06 UMR S1127, Institut du Cerveau et de la Moelle épinière, ICM, Paris, France

<sup>19</sup>Department of Neurology, Leiden University Medical Center, Leiden, The Netherlands

<sup>20</sup>Department of Neurology, Helsinki University Hospital, and Molecular Neurology, Research Programs Unit, Biomedicum, University of Helsinki, Helsinki, Finland

<sup>21</sup>Institute of Clinical Medicine, University of Oslo, Oslo, Norway

<sup>22</sup>Department of Neurology, Institute of Neurological Sciences, Queen Elizabeth University Hospital, Glasgow, United Kingdom

<sup>23</sup>Institute of Neuroscience & Psychology, University of Glasgow, Glasgow, United Kingdom

<sup>24</sup>Departments of Molecular & Human Genetics and Neuroscience, Baylor College of Medicine, Houston, Texas, USA

<sup>25</sup>Jan and Dan Duncan Neurological Research Institute, Texas Children's Hospital, Houston, Texas, USA

<sup>26</sup>Department of Neurodegenerative Diseases, UCL Queen Square Institute of Neurology, London, United Kingdom

<sup>27</sup>Mater Research, Translational Research Institute, Brisbane, Queensland, Australia

<sup>28</sup>Queensland Brain Institute, The University of Queensland, Brisbane, Australia

<sup>29</sup>Department of Neurology & Neurosurgery, McGill University, Montreal, Quebec, Canada

<sup>30</sup>Data Tecnica International, Glen Echo, Maryland, USA

\*Correspondence to: Dr. Cornelis Blauwendraat, Laboratory of Neurogenetics, NIA, NIH, Building 35, 35 Convent Drive, Bethesda, MD 20892, USA; E-mail: cornelis.blauwendraat@nih.gov; or Dr. Andrew B. Singleton, Laboratory of Neurogenetics, NIA, NIH, Building 35, 35 Convent Drive, Bethesda, MD 20892, USA; E-mail: singleton@mail.nih.gov

Received: 30 November 2018; Revised: 2 January 2019; Accepted: 21 January 2019

Authors C.B. and K.H. contributed equally to this work.

Relevant conflicts of interest/financial disclosures: Nothing to report.

Full financial disclosures and author roles may be found in the online version of this article.

Published online 00 Month 2019 in Wiley Online Library (wileyonlinelibrary.com). DOI: 10.1002/mds.27659

**ABSTRACT: Background:** Increasing evidence supports an extensive and complex genetic contribution to PD. Previous genome-wide association studies (GWAS) have shed light on the genetic basis of risk for this disease. However, the genetic determinants of PD age at onset are largely unknown.

**Objectives:** To identify the genetic determinants of PD age at onset.

**Methods:** Using genetic data of 28,568 PD cases, we performed a genome-wide association study based on PD age at onset.

**Results:** We estimated that the heritability of PD age at onset attributed to common genetic variation was  $\sim 0.11$ , lower than the overall heritability of risk for PD ( $\sim 0.27$ ), likely, in part, because of the subjective nature of this measure. We found two genome-wide significant association signals, one at *SNCA* and the other a protein-coding variant in *TMEM175*, both of which are known PD risk loci and a Bonferroni-corrected significant effect at other known PD risk loci, *GBA*,

*INPP5F/BAG3*, *FAM47E/SCARB2*, and *MCCC1*. Notably, *SNCA*, *TMEM175*, *SCARB2*, *BAG3*, and *GBA* have all been shown to be implicated in  $\alpha$ -synuclein aggregation pathways. Remarkably, other well-established PD risk loci, such as *GCH1* and *MAPT*, did not show a significant effect on age at onset of PD.

**Conclusions:** Overall, we have performed the largest age at onset of PD genome-wide association studies to date, and our results show that not all PD risk loci influence age at onset with significant differences between risk alleles for age at onset. This provides a compelling picture, both within the context of functional characterization of disease-linked genetic variability and in defining differences between risk alleles for age at onset, or frank risk for disease. © 2019 International Parkinson and Movement Disorder Society

**Key Words:** age at onset; *GBA*; Parkinson's disease; *SNCA*; *TMEM175*

Parkinson's disease (PD) is the most common neurodegenerative movement disorder. PD is pathologically characterized by the loss of dopaminergic neurons in the SN and  $\alpha$ -synuclein (encoded by *SNCA*) protein aggregates. Current estimates are that in 2015 there were 6.9 million PD patients worldwide, and this number is predicted to be 14.2 million in 2040.<sup>1</sup> PD has a strong age-dependent prevalence and male-female differences, where males are  $\sim 1.5$  times more likely to develop PD.<sup>2,3</sup>

The exact cause of PD is unknown; however, there is clear evidence that genetic variability plays a role in both disease development and progression. In the past two decades, mutations in several genes have been identified that cause monogenic forms of PD, accounting for around 1% to 5% of all PD cases.<sup>4</sup> The majority of PD cases are therefore referred to as sporadic PD. Genome-wide association studies (GWAS) have successfully identified over 40 loci robustly associated with PD. Interestingly, variability in several genes, including *SNCA*, *LRRK2*, *VPS13C*, *GCH1*, and *GBA*, appear to play a role in both monogenic and sporadic disease.<sup>5</sup>

Substantial evidence suggests that genetic variation plays a role in age at onset (AAO), where, for example, monogenic forms of PD often present as early-onset cases, but the identity of the exact genetic component in sporadic PD remains unclear.<sup>6,7</sup> Additionally, there is some evidence that AAO may be different between males and females.<sup>8,9</sup> Multiple studies have nominated variants and genes of interest, but replication and large cohort studies are lacking.<sup>7,10,11</sup> Additionally, rare coding variants in PD risk genes like *GBA* and *LRRK2* have been associated with an earlier

AAO.<sup>12-17</sup> Currently, the best predictor of PD AAO is a genetic risk score (GRS) based on cumulative genetic PD risk,<sup>7,18</sup> implying broad genetic overlap between PD susceptibility and PD AAO.

In this study, we performed the largest PD AAO GWAS to date including 28,568 PD cases. Using this large cohort, we have estimated the heritability of PD AAO and have identified several associated variants. Additionally, we have shown that the latest PD GRS remains highly correlated with of AAO.

## Materials and Methods

### Processing of International Parkinson's Disease Genomics Consortium Data Sets

Genotyping data (all Illumina platform based) were obtained from International Parkinson's Disease Genomics Consortium (IPDGC) members, collaborators, and public resources (Supporting Information Table S1). All data sets underwent quality control separately, both on individual-level data and variant-level data, before imputation. See Supporting Information Methods for a detailed description of data processing. Where possible, AAO was defined based on patient report of initial manifestation of parkinsonian motor signs (tremor, bradykinesia, rigidity, or gait impairment). Where this information was not available, age of diagnosis was used as a proxy for onset age. Note that the correlation was high between age of diagnosis and AAO.

The resulting quality-controlled and imputed data sets of PD cases (total  $n = 17,415$ ) were analyzed with the formula  $AGE\_AT\_ONSET \sim SNP + SEX + PC1-PC5$ . Analyses were performed per data set with *rvtests* linear regression using imputed dosages.<sup>19</sup> System Genomics of Parkinson's Disease (SGPD) data ( $n = 581$ ) was processed as above with the following minor changes: A linear regression model in PLINK was used to run a GWAS for AAO, and relatedness cutoff of 0.05 was used. The association analysis was adjusted for sex and the first 10 eigenvectors from principal component analysis.

### Processing of the 23andMe Data Set

As an independent second cohort, we used the 23andMe PD data set ( $n = 10,572$ ), which consisted of customers of the personal genetics company, 23andMe, Inc., who had consented to participate in research. PD patients were recruited through a targeted e-mail campaign in conjunction with the Michael J. Fox Foundation or other partners, patient groups, and clinics. PD cases were individuals who self-reported having been diagnosed with PD and who self-reported their age of PD diagnosis. We used age of diagnosis rather than age of symptom onset because symptom onset is often gradual and may be more difficult to self-report accurately. Note that the correlation was high between age of diagnosis and AAO ( $\rho = 0.917$ ;  $P < 1E-300$ ), and the average difference between age of diagnosis and AAO was 2.58 years. We have previously shown that self-reported PD case status is accurate with 50 of 50 cases confirmed by telemedicine interview.<sup>20</sup> See Supporting Information Methods for a detailed description of data processing. After quality control, which included  $R^2 > 0.5$  variant removal, we analyzed 11,956,580 single-nucleotide polymorphisms (SNPs). Remaining PD cases ( $n = 10,572$ ) were analyzed using the formula  $AGE\_AT\_DIAGNOSIS \sim SNP + SEX + PC1-PC5 +$  genotyping platform. The genomic inflation factor was  $\lambda = 1.015$ .

### Meta-Analyzing Data Set

The 17 IPDGC data sets were meta-analyzed using METAL (v.2011-03-25) fixed effects using default settings.<sup>21</sup> We excluded SNPs with an  $I^2$  statistic  $>50\%$  and variants that were present in fewer than 66.7% of the data sets. One genome-wide significant variant was excluded because of this filter criteria (rs2737029,  $I^2 = 58.1\%$ ). This resulted in a total of 6,850,647 variants and a genomic inflation factor of  $\lambda = 1.001$ . For the combined GWAS, we meta-analyzed all 17 IPDGC data sets with the 23andMe data set using the same quality-control steps.

### Additional Analyses and Figures

PD GWAS loci were obtained from using Table 1 and Table 2 of Chang et al 2017<sup>5</sup> and using P.META from the provided summary stats (see Supporting Information Table S3). Additionally, to assess the influence of a GRS for

PD case-control status on PD AAO, we obtained the GRS from the most recent PD GWAS Supplementary.<sup>5</sup> The GRS was calculated and processed using PLINK for each individual as described previously.<sup>7</sup> Associations were performed using the formula  $AGE\_AT\_ONSET \sim GRS + SEX + PC1-PC5$ . Quantile-quantile (QQ)-plots and Manhattan plots were generated using FUMA.<sup>22</sup> Forest plots were generated in R using the package *rmeta* (<https://cran.r-project.org/web/packages/rmeta/index.html>). Locus plots<sup>23</sup> were generated for the genome-wide significant loci and were compared to the latest published PD GWAS.<sup>5</sup> GCTA-cojo analyses were performed to identify whether there were multiple independent signals in loci of interest using all IPDGC data sets (excluding SGPD) described in Supporting Information Table S1 as a reference panel.<sup>24,25</sup> This reference panel was created using variants passing the following criteria:  $R^2 < 0.8$ , minor allele frequency  $>0.001$ , Hardy-Weinberg equilibrium  $P < 1E-6$ , and a maximum variant missingness of 5%. The genetic correlation between the PD AAO GWAS and the PD GWAS<sup>5</sup> was calculated using linkage disequilibrium score regression (LDSC)<sup>26</sup> using default settings for European populations. Heritability was estimated using LDSC and GCTA based on GWAS summary statistics and individual-level genotypes, respectively.

## Power Calculations

We performed power calculations using the method of Brion and colleagues:<sup>27</sup>

$$Power = 1 - P(\chi_{NCP}^2 > \chi_{0.95}^2)$$

where  $\chi_{NCP}^2$  is a random variable from a noncentral  $\chi^2$  with one degree of freedom, and  $\chi_{0.95}^2$  is the threshold of a central  $\chi^2$  distribution with one degree of freedom and a type 1 error rate of 0.05. The noncentrality parameter was calculated using the method of Sham and Purcell:<sup>28</sup>

$$\lambda = N \times \frac{2p(1-p) \times \beta^2}{\text{variance}(Y)}$$

where  $\lambda$  is the noncentrality parameter,  $p$  is the minor allele frequency,  $\beta$  is the effect size in years, and  $\text{variance}(Y)$  is the variance in PD AAO. We estimated  $\text{variance}(Y)$  by taking the mean variance across each cohort, weighted by their sample size. We assessed effect sizes between 0.01 and 1 years and reported the minimum effect size that yielded  $>80\%$  power.

## RESULTS

### Initial Data Overview

In total, we included 18 data sets: the IPDGC data contain 17 independent cohorts ( $n = 17,996$ ) and the 23andMe PD

cohort ( $n = 10,572$ ; see Supporting Information Table S1 for more details). The average AAO in the IPDGC data set was 62.14 (range, 20–96; standard deviation [SD] = 12.08), whereas in the 23andMe dataset the average age of diagnosis was 60.71 (range, 40–97; SD = 9.98). We found minor differences in AAO in females and males in both the IPDGC data set (females = 62.15, SD = 11.71; males = 62.03, SD = 11.95) and the 23andMe data set (females = 59.95, SD = 9.79; males = 61.20, SD = 10.07).

### Heritability of PD Age at Onset

Using LDSC, the heritability of PD AAO was  $h^2 = 0.076$  (standard error [SE] = 0.0277) in the IPDGC cohort,  $h^2 = 0.0805$  (SE = 0.0403) in the 23andMe cohort, and 0.109 (SE = 0.0255) in the complete meta-analysis. These heritability estimates for PD AAO were similar to estimates derived using GCTA in the largest IPDGC data set (IPDGC\_NeuroX,  $h^2 = 0.0798$ ; SE = 0.0391;  $P = 0.0184$ ;  $N = 5,428$ ) and in the 23andMe dataset ( $h^2 = 0.1235$ ; SE = 0.0341;  $P = 1.031E-4$ ;  $N = 10,697$ ). Heritability estimates in the other IPDGC data sets were considered less reliable because of the low number of included cases.

### SNCA as Top Associated Loci With PD Age at Onset

Two loci reached genome-wide significance, *SNCA* and *TMEM175*, both of which are established PD risk loci based on PD case/control GWASes (Fig. 1). Common variation at the *SNCA* locus has clearly been established as a risk factor PD, and both rare mutations and whole-gene duplications have been identified to cause monogenic PD.<sup>29,30</sup> Several independent signals have been reported in this locus, where initially a variant in intron 4 was identified in PD;<sup>31</sup> subsequently a second independent signal at the 5' end was identified,<sup>32</sup> which is also associated with dementia with Lewy bodies;<sup>33</sup> and currently at least three independent signals are present in this locus.<sup>34</sup> Here, we identified both signals to be associated with AAO (Fig. 2A). The 3' end signal is the strongest with rs356203 as the most associated SNP, resulting in a reduction of  $\sim 0.6$  year in AAO ( $P_{\text{meta}} = 1.90E-12$ ;  $\beta = -0.626$ ; SE = 0.0890). Using conditional analysis, we also identified the 5' end signal (Fig. 2B; rs983361,  $P_{\text{conditional}} = 6.82E-6$ ;  $\beta = -0.484$ ; SE = 0.108).

### A Coding Variant in *TMEM175* Is Associated With PD Age at Onset

The *TMEM175/GAK* locus is another known PD locus where two independent signals have been identified.<sup>32</sup> Whereas it is more parsimonious to assume that a single GWAS peak is the product of a single causal gene in the locus, there is evidence that both *TMEM175* and *GAK* may modulate PD risk.<sup>35,36</sup> *TMEM175* and *GAK* share a promoter, suggesting that they may be coregulated and

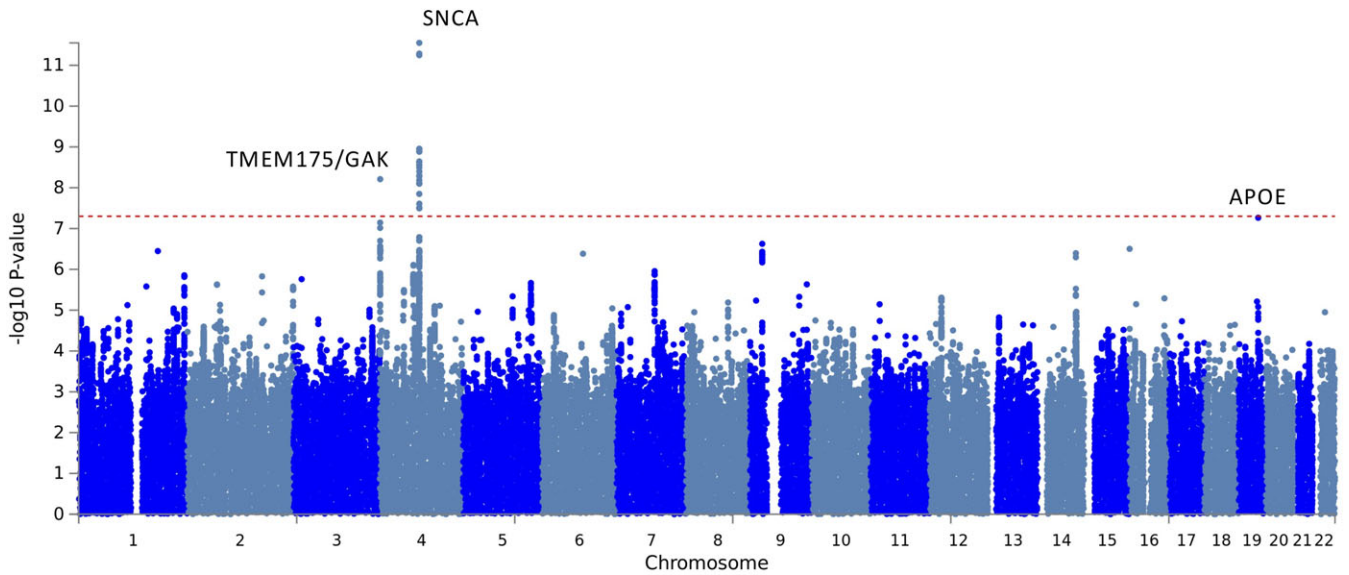
may perform related cellular functions. Interestingly, the *TMEM175/GAK* locus is one of the few PD GWAS loci where a coding variant (*TMEM175* p.M393 T, exon 11, rs34311866) is among the highest associated variants (Fig. 2A). This coding variant was also the most associated variant in this locus in our PD AAO analysis ( $P_{\text{meta}} = 9.62E-9$ ;  $\beta = -0.613$ ; SE = 0.107), resulting in an average reduction of  $\sim 0.6$  years (Figs. 3B and 5). Using conditional analysis based on rs34311866, we did not identify a second independent signal in this locus ( $P = 0.879$ ;  $\beta = -0.0240$ ; SE = 0.158; Supporting Information Fig. S9).

### PD High-Risk Variants in *GBA* and *LRRK2* and Age at Onset

*LRRK2* p.G2019S and *GBA* variants are the most commonly identified genetic risk factors for PD. *LRRK2* p.G2019S is identified in  $\sim 1\%$  of the general European PD population, but higher frequencies have been reported in other populations.<sup>37</sup> *GBA* variants are more commonly identified in Ashkenazi Jewish populations, but are also present in the European population.<sup>38</sup>

*LRRK2* p.G2019S (rs34637584) has already been described to have a large range of AAO and reduced penetrance.<sup>12,14</sup> Because of the low frequency and low imputation quality of this variant, it did not pass the variant-level quality control and was only tested in 9 of the 18 data sets. Similar to previous studies,<sup>37</sup> we identified 140 carriers in the IPDGC data sets ( $\sim 0.8\%$  of all PD cases). The average AAO for p.G2019S carriers was 66.58 (range = 36–95; SD = 11.66), which is  $\sim 4$  years later compared to the average AAO of noncarriers in the IPDGC data sets (62.14; range, 20–96; SD = 12.08). However, this is based on a relatively small amount of cases, and some cohorts excluded *LRRK2* p.G2019S carriers pregenotyping or excluded familial PD cases. Besides, the noncoding variant at the 5' end of *LRRK2* (rs76904798), which is also identified as a risk factor PD did not show an association with AAO ( $P = 0.1267$ ;  $\beta = -0.184$ ; SE = 0.121).

For *GBA*, there have been several reports that variants in *GBA* affect AAO in PD.<sup>39–41</sup> When solely looking at the *GBA* locus, we identified three significant hits for the *GBA* region including p.N370S variant (rs76763715,  $P = 2.628E-6$ ;  $\beta = -2.600$ ; SE = 0.553), p.E326K (rs2230288,  $P = 0.00123$ ;  $\beta = -0.929$ ; SE = 0.287) and p.T369M (rs75548401:  $P = 0.01153$ ;  $\beta = -1.281$ ; SE = 0.507). All resulted in relatively large reduction AAO ranging from 2.6 to 0.9 year. Note that the p.N370S variant was only tested in 13 of the 18 data sets because of the low frequency or low imputation quality. Using conditional analysis, we did not identify other clear significant signals in the *GBA* gene (Supporting Information Fig. S11).



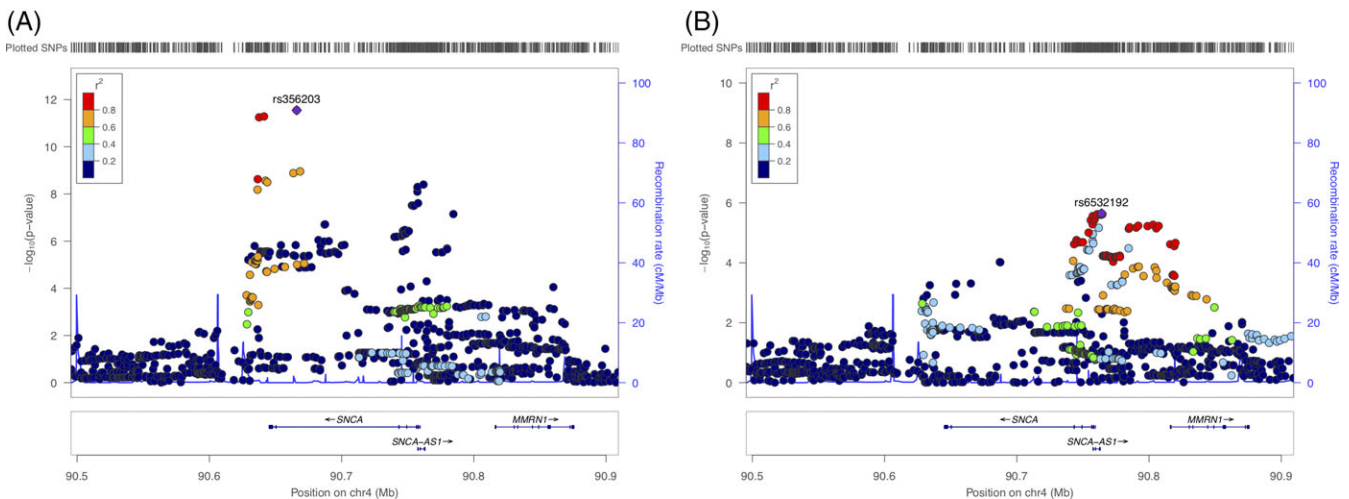
**FIG. 1.** Manhattan plot of Parkinson's disease age at onset GWAS. Based on meta-analyses of data sets ( $n = 28,568$ ) using 7,426,111 SNPs. Two genome-wide significant loci were identified: *SNCA* and the *TMEM175/GAK*. Additionally, one borderline significant locus was found, *APOE*. [Color figure can be viewed at [wileyonlinelibrary.com](http://wileyonlinelibrary.com)]

### PD Genetic Risk Loci Are Associated With Age at Onset

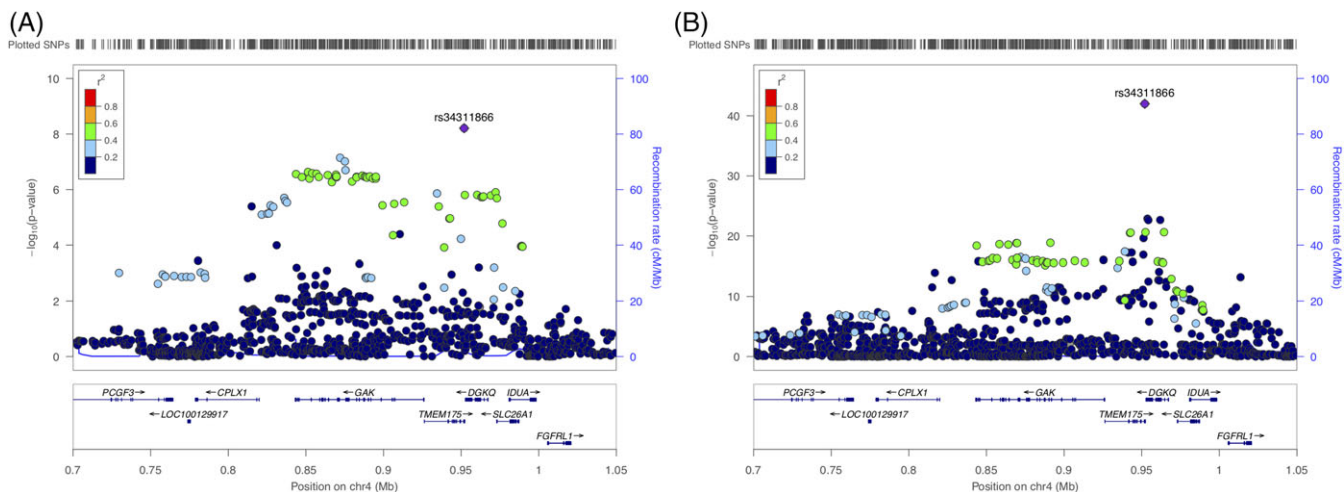
Previously, a GRS based on PD GWAS loci has been identified as the main genetic predictor for AAO.<sup>7</sup> Here, we tested the association between the updated 47-SNP GRS used in the latest PD GWAS study.<sup>5</sup> For each IPDGC data set, the GRS was calculated and we identified a consistent association between the Chang and colleagues GRS and PD AAO. After meta-analyzing results from the individual cohorts, we found that each 1-SD increase in GRS led to an earlier AAO by  $\sim 0.8$  years (summary effect =  $-0.801$ ; 95% confidence interval CI:  $-0.959, -0.643$ ;  $I^2 = 11.6\%$ ; Supporting Information Fig. S12). Although this effect was highly significant, the genetic proportion explained by the

GRS was  $\sim 0.56\%$ , and the *SNCA* and *TMEM175* loci combined explained  $\sim 0.3\%$ , most likely attributed to the lower heritability. Furthermore, there was a significantly negative genetic correlation between the AAO GWAS summary statistics and the most recent PD GWAS<sup>5</sup> using LDSC ( $rg = -0.5511$ ;  $se = 0.103$ ;  $P = 9.027E-8$ ).

When solely looking at the SNPs that were genome-wide significant in the most recent PD GWAS,<sup>5</sup> we identified a significant effect in six loci after Bonferroni correction: *SNCA*, *TMEM175*, *BST1*, *INPP5F/BAG3*, *FAM47E/SCARB2*, and *MCCC1* (Fig. 4; Supporting Information Table S3). Interestingly, for some well-established loci, no significant  $P$  values were identified in any of the data sets, including *GCH1* ( $P_{meta} = 0.9769$ ; 80% power to detect



**FIG. 2.** *SNCA* association with Parkinson's disease age at onset. (A) Locus zoom plot of the association signal of the *SNCA* locus. The age at onset association signal is primarily based at the 3' end of the *SNCA* gene, highly similar as the PD GWAS signal of Chang and colleagues<sup>5</sup> (Supporting Information Fig. S8). (B) Conditional analysis based on the most associated SNP (rs356203) shows that there is a secondary signal at the 5' end of the *SNCA* gene rs6532192, as well similar as previously reported for the PD GWAS.<sup>5</sup> [Color figure can be viewed at [wileyonlinelibrary.com](http://wileyonlinelibrary.com)]



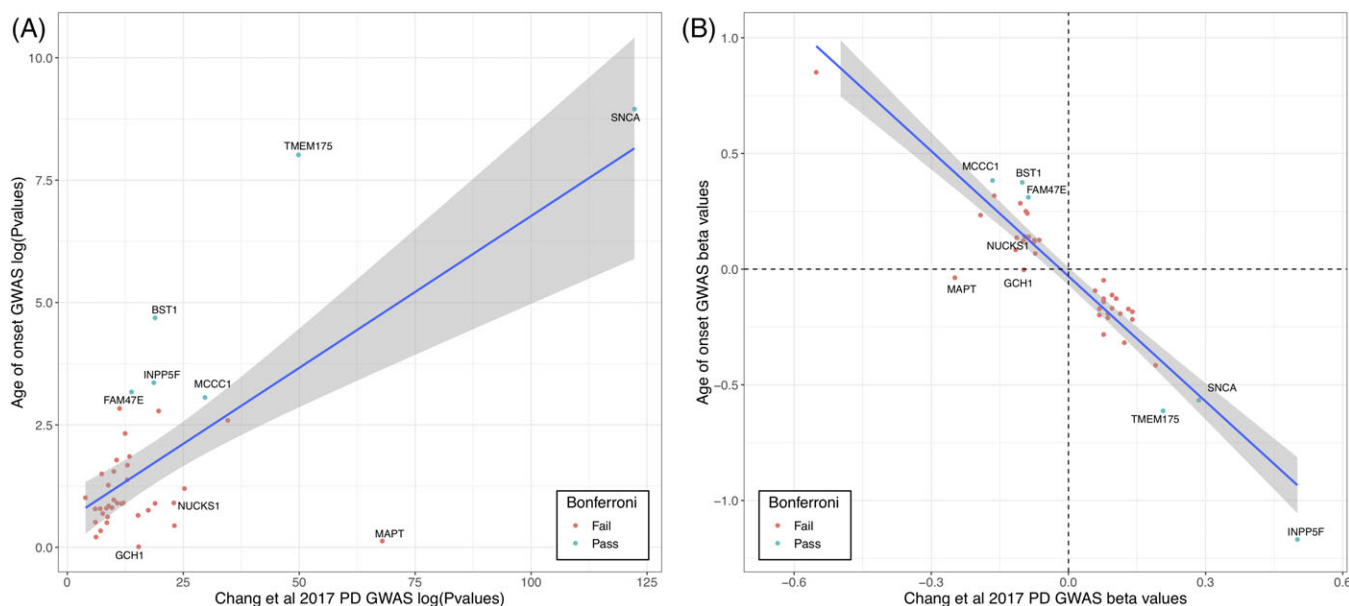
**FIG. 3.** *TMEM175/GAK* locus association with Parkinson's disease age at onset and Parkinson's disease. (A) Locus zoom plot of the association signal of the *TMEM175/GAK* locus with PD age at onset. The association signal is primarily based on the coding variant *TMEM175* p.M393T, rs34311866. (B) Locus zoom plot of the association signal of the *TMEM175/GAK* locus with PD versus controls.<sup>5</sup> Similarly, as in (A), the main signal is based on the coding variant *TMEM175* p.M393 T, rs34311866. [Color figure can be viewed at [wileyonlinelibrary.com](http://wileyonlinelibrary.com)]

a change in AOO >0.28 years), *RAB7L1/NUCKS1* (PARK16;  $P_{meta} = 0.124$ ; 80% power to detect a change in AOO >0.26 years), and *MAPT* ( $P_{meta} = 0.745$ ; 80% power to detect a change in AOO >0.32 years; Fig. 5; see Supporting Information Table S3 for all power calculations).

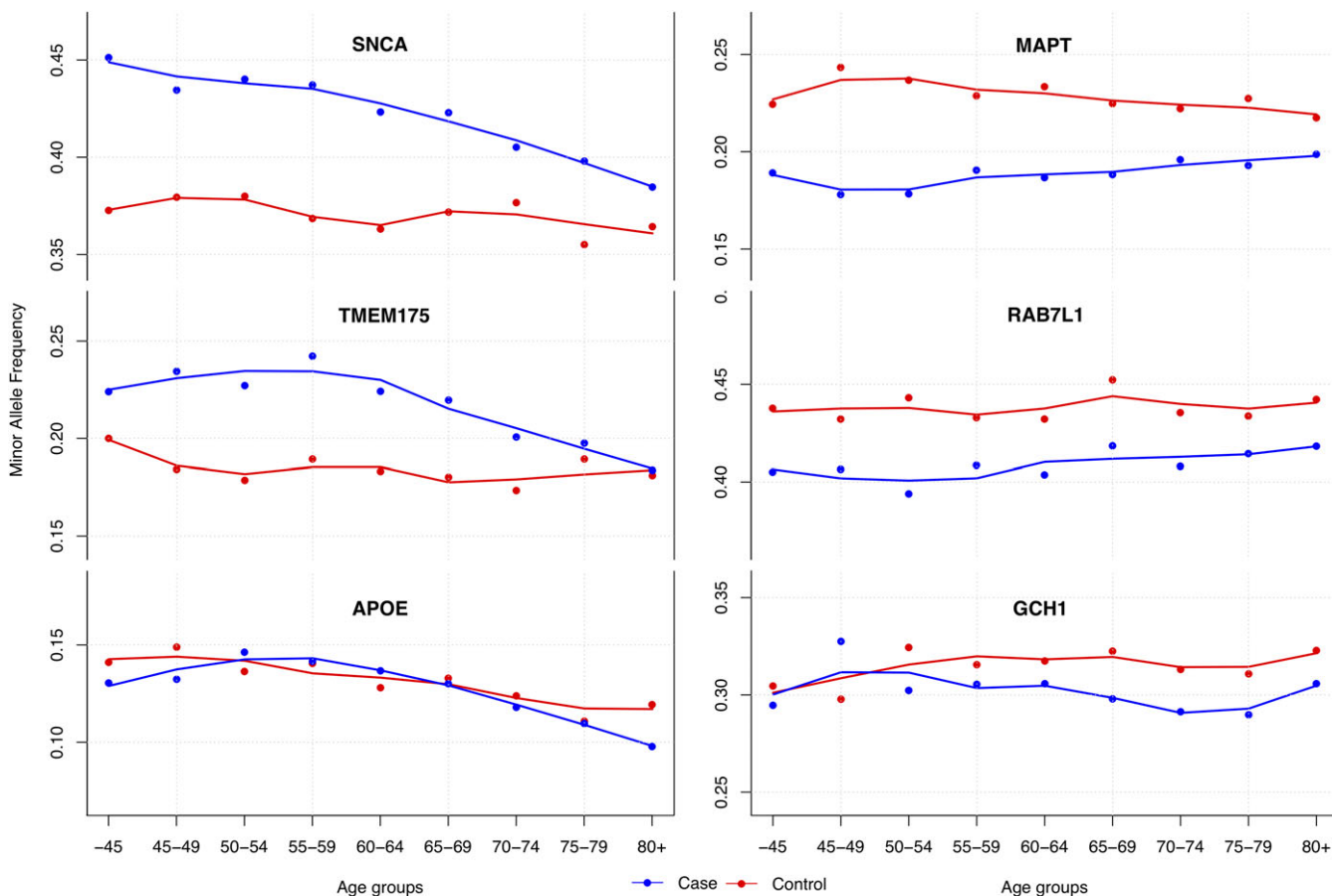
### *APOE E4* Allele as Positive Control Longevity Marker

Interestingly, the variant representing the *APOE E4* allele (rs429358) was among the borderline significant loci with a  $P_{meta}$  value of  $5.696E-8$  resulting in a 0.7 year earlier of AAO ( $\beta = -0.707$ ;  $SE = 0.130$ ). The *APOE E4* allele

is the most common genetic risk factor for Alzheimer's disease,<sup>42</sup> but has no effect on PD ( $P$  value in latest GWAS = 0.625).<sup>32,43</sup> Interestingly, it has already been previously identified as an aging marker.<sup>44,45</sup> To investigate this in our data, we performed a GWAS on the reported age of controls from the IPDGC data sets and this demonstrated a result consistent with that observed in the PD cases:  $P$  value of  $1.49E-5$  (effect =  $-0.644$ ;  $SE = 0.149$ ), suggesting that associations observed at this locus are general age-related effects (Fig. 5). Conditional tests based on rs429358 showed that the whole signal is coming from the *APOE E4* allele (Supporting Information Fig. S10).



**FIG. 4.**  $P$ -value and beta-value correlation plot between Parkinson's disease GWAS and age at onset GWAS. (A) Log-transformed  $P$  values were plotted of the Chang and colleagues<sup>5</sup> PD GWAS (x-axis) and the current age at onset GWAS (y-axis). SNPs are annotated by their closest gene. Green dots are loci that pass Bonferroni correction and red are loci that did not pass Bonferroni correction. (B) Beta values were plotted of the Chang and colleagues<sup>5</sup> PD GWAS (x-axis) and the current age at onset GWAS (y-axis). SNPs are annotated by their closest gene. Green dots are loci that pass Bonferroni correction, and red are loci that did not pass Bonferroni correction. [Color figure can be viewed at [wileyonlinelibrary.com](http://wileyonlinelibrary.com)]



**FIG. 5.** Minor allele frequency differences correlated with age groups separated by case-control status. Genotype data were merged and minor allele frequency was calculated per age group and separated by case-control status (IPDGC data only: N\_cases = 17,996 and N\_controls = 16,502; each age group contains >850 individuals). Lines were using LOESS regressions based on the minor allele frequency per age group. On the left, the three most significant loci associated with PD age at onset are shown; *SNCA* = rs356203, *TMEM175/GAK* = rs34311866, and *APOE* = rs429358. On the right, three significant PD case-control GWAS loci are shown to have no clear effect on PD age at onset; *MAPT* = rs17649553, *RAB7L1* = rs823118, and *GCH1* = rs11158026. Standard-error bars are not shown in the figure, but are neglectable ( $\sim 0.015$ ) for each age group. LOESS, locally estimated scatterplot smoothing. [Color figure can be viewed at wileyonlinelibrary.com]

Additionally, none of the PD loci in the control dataset had a significant *P* value after correction for multiple testing (Supporting Information Table S5).

### Replication of Previous Associated Loci and Potential Sex Effects

In the past decade, several studies have performed PD AAO analyses and nominated many genes and variants of interest (Supporting Information Table S2). Many of these variants and genes were identified in smaller data sets and were reported with nominal *P* values or could not be replicated in other data sets. In our current GWAS, we replicate the findings in *SNCA*, *GBA*, and *TMEM175* as described above (Supporting Information Table S2).

Additionally, some evidence exists there that there might be sex differences in AAO. To investigate this, we divided the IPDGC data sets (excluding the SGPD data set) into a males-only data set (N = 11,411) and a females-only data set (N = 6,621) and performed sex-specific AAO GWASes and meta-analyses. No genome wide-significant hits were identified in either the male or the female meta-analysis, and

the effect sizes for the most recent PD GWAS variants Chang and colleagues were similar (Pearson correlation = 0.532; *P* = 0.00034; Supporting Information Table S4). Interestingly, we did identify a similar sex-specific effect of the *COMT* coding variant rs4680 (p.V158M) as reported previously: *P* = 0.0133 in males (effect = 0.370; SE = 0.150) and *P* = 0.922 in females (effect =  $-0.0188$ ; SE = 0.193).<sup>46</sup>

## Discussion

Here, we performed a genome-wide AAO analysis using 28,568 PD cases and discovered several PD loci associated with AAO. We identified two genome-wide significantly associated loci—*SNCA* (*P*<sub>meta</sub> = 1.90E-12) and *TMEM175* (*P*<sub>meta</sub> = 9.62E-9)—as well as several subsignificant loci including *GBA*, *SCARB2*, and *BAG3*. Notably, this is the first study reporting genome-wide significance for PD GWAS loci for PD AAO. The heritability estimate of PD AAO was  $\sim 0.11$ , which is much less than the heritability of PD case-control status  $\sim 0.27$ .<sup>5,47</sup> Our heritability estimate was lower than an

estimate from a previous study in familial PD, although this was based on a relatively small data set ( $n = 504$  families).<sup>6</sup> This is likely, in large part, attributed to the subjective nature of this phenotype.

It has been shown that PD case-control GWAS loci are associated with PD AAO.<sup>7</sup> We found that a GRS based on the latest PD GWAS<sup>5</sup> was also highly associated with an earlier age of PD onset (Supplementary Figure 12). Furthermore, there was a significant negative genetic correlation between the PD case-control GWAS and the PD AAO GWAS. Six individual loci remained significant after Bonferroni correction, including two well-established PD loci—*SNCA* and *TMEM175*—and four less-studied PD loci—*BST1*, *INPP5F/BAG3*, *FAM47E/SCARB2*, and *MCCC1*. Interestingly, no effect was identified for several well-established loci, including *GCH1*, *RAB7L1* (*PARK16*), and *MAPT* (Supporting Information Table S3). For these three loci, our study had 80% power (at  $P = 0.05$ ) to detect changes greater than 0.28, 0.26, and 0.32 years, respectively. For comparison, the two genome-wide significant hits in *SNCA* and *TMEM175* modified AAO by  $\sim 0.6$  year. We believe this provides compelling evidence that only a subset of PD case-control risk SNPs also modulates PD AAO, and notably that variability at *MAPT*, a major GWAS identified risk factor for PD, does not influence AAO. We believe these data may suggest that different PD loci modulate risk through different pathways and that this likely has therapeutic consequences.

Interestingly, three of our top hits (*SNCA*, *TMEM175*, and *GBA*) are strongly implicated in  $\alpha$ -synuclein mechanisms of PD pathogenesis pathology. *SNCA* encodes for the  $\alpha$ -synuclein protein, which is the major constituent of Lewy bodies, the defining pathology of PD. Both common and rare variants at *SNCA* are associated with increased PD risk, including duplications or triplications of the genomic locus.<sup>29</sup> One of the distinguishing features of autosomal-dominant PD caused by *SNCA* gene multiplications is an early AAO.<sup>48,49</sup> The common variants at *SNCA* associated with PD risk and AAO have also been demonstrated to enhance *SNCA* gene expression.<sup>34,50</sup> Thus, based on the genetics of both Mendelian and sporadic PD, *SNCA* dosage appears to be a major driver of disease onset age. *TMEM175* has been shown to impair lysosomal and mitochondrial function and increases  $\alpha$ -synuclein aggregation.<sup>36</sup> *GBA* has been shown to be involved in several  $\alpha$ -synuclein aggregation mechanisms, including autophagy and enhancing  $\alpha$ -synuclein cell-to-cell transmission.<sup>51–53</sup> Other loci identified by our PD AAO analyses have also been linked to  $\alpha$ -synuclein clearance, for example for *SCARB2*, encoding the endoplasmic reticulum-to-lysosome transporter of *GBA*, and *BAG3*.<sup>54,55</sup> Taken together, it is tempting to speculate about the direct link between PD AAO loci influencing  $\alpha$ -synuclein accumulation and clearance pathways and the other nonsignificant PD loci acting in another pathway by a different mechanism, but more experiments are needed to confirm this.

Several previous studies have performed PD AAO analyses in smaller data sets. We were unable to replicate the majority of these previous reported variants, likely because of the lack of power to detect a true signal in the smaller studies ( $< 2,000$  samples; see Supporting Information Table S2). We may have been unable to replicate previous work by Hill-Burns and colleagues, given that much of their analysis was restricted to familial PD cases.<sup>11</sup> Their analysis of sporadic PD included almost 4,000 cases, but unlike our study and several others,<sup>7,40,56</sup> they did not find significant associations with *SNCA* ( $rs356203$ ,  $P = 0.355$ ) or *TMEM175* ( $rs34311866$ ,  $P = 0.525$ ).

Although we included a very large amount of data, there were still several limitations to our study. First, we had limited power to detect rare variants that modulate PD AAO because of the use of genotyping arrays and large number of cohorts with a relatively small size. Several reports have shown that rare variants may influence AAO of PD. For example, a recent report showed that rare variants in *LRRK2* lowered AAO.<sup>16</sup> This likely also explains the relatively moderate  $P$  values for rare coding variants in *GBA* and *LRRK2* on age onset.

Second, because of the lack of reliable genotype data, we excluded chromosomes X and Y from our analysis. Both of these limitations could be addressed by using genome sequencing data, and large genome sequencing projects are currently underway. Third, the heritability of PD AAO ( $\sim 0.11$ ) was much lower than the heritability of PD case-control status,<sup>47</sup> which, in part, explains the lack of genome-wide significantly associated loci in our study. Fourth, there was a reasonable amount of heterogeneity in the mean AAO our different cohorts. Age of PD diagnosis was self-reported in some of our cohorts and assessed by physicians in other cohorts. Some cohorts were specifically designed to include younger-onset cases. Other cohorts provided age of diagnosis whereas others used AAO, although these are likely to be highly correlated ( $r > 0.9$  in our data). By analyzing each cohort separately, we were able to mitigate many of these interstudy sources of variation. Indeed, there was relatively little heterogeneity of SNP effect-size estimates between studies (Supporting Information Table S3). However, future data collection and studies would probably benefit from more specific and more predefined structured and symptom-specific AAO diagnostic criteria. Implementation of such criteria in large studies and cohorts or even in health care systems could significantly improve the understanding of the genetics of PD AAO.

Overall, we have performed the largest AAO of PD GWAS to date, and our results reveal an interesting and significant genetic component. Our results show that not all PD risk loci influence AAO with significant differences between risk alleles for AAO, which implies different mechanisms for risk for developing PD and PD AAO. This provides a compelling picture, both within the context of functional characterization of disease-linked genetic variability and in defining differences between risk alleles for AAO, or frank risk for



disease. The significantly associated variability is centered on the gene encoding  $\alpha$ -synuclein and on variability in several other lysosomal proteins that have been shown to directly influence  $\alpha$ -synuclein aggregation or clearance. Thus, these data support the notion that  $\alpha$ -synuclein is an important target for future disease-modifying or -preventive therapies and that drugs targeting  $\alpha$ -synuclein production and clearance may be most valuable. ■

**Acknowledgments:** We thank all of the subjects who donated their time and biological samples to be a part of this study. We also would like to thank all members of the IPDGC. See for a complete overview of members, acknowledgements, and funding: <http://pdgenetics.org/partners>. We also thank the research participants and employees of 23andMe for making this work possible. This work was supported, in part, by the Intramural Research Programs of the National Institute of Neurological Disorders and Stroke (NINDS), the National Institute on Aging (NIA), and the National Institute of Environmental Health Sciences, both part of the National Institutes of Health, Department of Health and Human Services; project numbers 1ZIA-NS003154, Z01-AG000949-02, and Z01-ES101986. In addition, this work was supported by the Department of Defense (award W81XWH-09-2-0128) and The Michael J Fox Foundation for Parkinson's Research. This work was supported by National Institutes of Health grants R01NS037167, R01CA141668, and P50NS071674; American Parkinson Disease Association (APDA); Barnes Jewish Hospital Foundation; and Greater St Louis Chapter of the APDA. The KORA (Cooperative Research in the Region of Augsburg) research platform was started and financed by the Forschungszentrum für Umwelt und Gesundheit, which is funded by the German Federal Ministry of Education, Science, Research, and Technology and by the State of Bavaria. This study was also funded by the German Federal Ministry of Education and Research (BMBF) under the funding code 031A430A, the EU Joint Programme—Neurodegenerative Diseases Research (JPND) project under the aegis of JPND ([www.jpnd.eu](http://www.jpnd.eu)) through Germany, BMBF, funding code 01ED1406 and iMed (the Helmholtz Initiative on Personalized Medicine). This study is funded by the German National Foundation grant (DFG SH599/6-1; grant to M.S.), Michael J Fox Foundation, and MSA Coalition, USA (to M.S.). The McGill study was funded by the Michael J. Fox Foundation and the Canadian Consortium on Neurodegeneration in Aging (CCNA). This study utilized the high-performance computational capabilities of the Biowulf Linux cluster at the National Institutes of Health (Bethesda, MD; <http://biowulf.nih.gov>) and DNA panels, samples, and clinical data from the National Institute of Neurological Disorders and Stroke Human Genetics Resource Center DNA and Cell Line Repository. People who contributed samples are acknowledged in descriptions of every panel on the repository website. We thank P. Tienari (Molecular Neurology Programme, Biomedicum, University of Helsinki), T. Peuralinna (Department of Neurology, Helsinki University Central Hospital), L. Myllykangas (Folkhalsan Institute of Genetics and Department of Pathology, University of Helsinki), and R. Sulkava (Department of Public Health and General Practice Division of Geriatrics, University of Eastern Finland) for the Finnish controls (Vantaa85+ GWAS data). We used genome-wide association data generated by the Wellcome Trust Case-Control Consortium 2 (WTCCC2) from UK patients with Parkinson's disease and UK control individuals from the 1958 Birth Cohort and National Blood Service. Genotyping of UK replication cases on ImmunoChip was part of the WTCCC2 project, which was funded by the Wellcome Trust (083948/Z/07/Z). UK population control data were made available through WTCCC1. This study was supported by the Medical Research Council and Wellcome Trust disease centre (grant WT089698/Z/09/Z to N.W., J.H., and A.Sc.). As with previous IPDGC efforts, this study makes use of data generated by the Wellcome Trust Case-Control Consortium. A full list of the investigators who contributed to the generation of the data is available from [www.wtccc.org.uk](http://www.wtccc.org.uk). Funding for the project was provided by the Wellcome Trust under awards 076113, 085475, and 090355. This study was also supported by Parkinson's UK (grants 8047 and J-0804) and the Medical Research Council (G0700943 and G1100643). Sequencing and genotyping done in McGill University was supported by grants from the Michael J. Fox Foundation, the Canadian Consortium on Neurodegeneration in Aging (CCNA), and, in part, thanks to funding from the Canada First Research Excellence Fund (CFREF), awarded to McGill University for the Healthy Brains for Healthy Lives (HBHL) program. PRoBaND data were funded by Parkinson's UK (Grant ref J-1101) and supported by NHS Greater Glasgow & Clyde and University of Glasgow. DNA extraction work that was done in the UK was undertaken at University College London Hospitals, University College London, who received a proportion of funding from the Department of Health's National Institute for Health Research Biomedical Research Centres funding. This study was supported, in part, by the Wellcome Trust/Medical Research Council Joint Call in Neurodegeneration award (WT089698) to the Parkinson's Disease Consortium (UKPDC), whose members are from the UCL Institute of Neurology, University of Sheffield, and the Medical Research Council Protein Phosphorylation

Unit at the University of Dundee. We thank the Quebec Parkinson's Network (<http://ppq-qpn.org>) and its members. This work was supported by the Medical Research Council grant MR/N026004/1. Data used in the preparation of this article were obtained from the Parkinson's Progression Markers Initiative (PPMI) database ([www.ppmi-info.org/data](http://www.ppmi-info.org/data)). For up-to-date information on the study, visit [www.ppmi-info.org](http://www.ppmi-info.org).

PPMI, a public-private partnership, is funded by the Michael J. Fox Foundation for Parkinson's Research and funding partners, including AbbVie, Avid, Biogen, Bristol-Myers Squibb, Covance, GE Healthcare, Genentech, GlaxoSmithKline, Lilly, Lundbeck, Merck, Meso Scale Discovery, Pfizer, Piramal, Roche, Servier, Teva, UCB, and Golub Capital. Data and biospecimens used in preparation of this manuscript were obtained from the Parkinson's Disease Biomarkers Program (PDBP) Consortium, part of the National Institute of Neurological Disorders and Stroke at the National Institutes of Health. Investigators include: Roger Albin, Roy Alcalay, Alberto Ascherio, DuBois Bowman, Alice Chen-Plotkin, Ted Dawson, Richard Dewey, Dwight German, Xuemei Huang, Rachel Saunders-Pullman, Liana Rosenthal, Clemens Scherzer, David Vaillancourt, Vladislav Petyuk, Andy West, and Jing Zhang. The PDBP Investigators have not participated in reviewing the data analysis or content of the manuscript. A full acknowledgement is available in the Supporting Information data.

## Data Availability

IPDGC GWAS summary statistics are available on the IPDGC website (<http://pdgenetics.org/resources>), and 23andMe GWAS summary statistics will be made available to qualified researchers under an agreement with 23andMe that protects the privacy of the 23andMe participants. Please visit <http://research.23andme.com/collaborate/#publication> for more information and to apply to access the data.

## References

1. Dorsey ER, Bloem BR. The Parkinson pandemic—a call to action. *JAMA Neurol* 2018;75:9–10.
2. Reeve A, Simcox E, Turnbull D. Ageing and Parkinson's disease: why is advancing age the biggest risk factor? *Ageing Res Rev* 2014;14:19–30.
3. Moisan F, Kab S, Mohamed F, et al. Parkinson disease male-to-female ratios increase with age: French nationwide study and meta-analysis. *J Neurol Neurosurg Psychiatry* 2016;87:952–957.
4. Singleton A, Hardy J. The evolution of genetics: Alzheimer's and Parkinson's diseases. *Neuron* 2016;90:1154–1163.
5. Chang D, Nalls MA, Hallgrímsdóttir IB, et al. A meta-analysis of genome-wide association studies identifies 17 new Parkinson's disease risk loci. *Nat Genet* 2017;49:1511–1516.
6. Hamza TH, Payami H. The heritability of risk and age at onset of Parkinson's disease after accounting for known genetic risk factors. *J Hum Genet* 2010;55:241–243.
7. Nalls MA, Escott-Price V, Williams NM, et al. Genetic risk and age in Parkinson's disease: continuum not stratum. *Mov Disord* 2015;30:850–854.
8. Alves G, Müller B, Herlofson K, et al. Incidence of Parkinson's disease in Norway: the Norwegian ParkWest study. *J Neurol Neurosurg Psychiatry* 2009;80:851–857.
9. Haaxma CA, Bloem BR, Borm GF, et al. Gender differences in Parkinson's disease. *J Neurol Neurosurg Psychiatry* 2007;78:819–824.
10. Latourelle JC, Pankratz N, Dumitriu A, et al. Genomewide association study for onset age in Parkinson disease. *BMC Med Genet* 2009;10:98.
11. Hill-Burns EM, Ross OA, Wisemann WT, et al. Identification of genetic modifiers of age-at-onset for familial Parkinson's disease. *Hum Mol Genet* 2016;25:3849–3862.
12. Lee AJ, Wang Y, Alcalay RN, et al. Penetrance estimate of LRRK2 p.G2019S mutation in individuals of non-Ashkenazi Jewish ancestry. *Mov Disord* 2017;32:1432–1438.
13. Malek N, Weil RS, Bresner C, et al. Features of -associated Parkinson's disease at presentation in the UK study. *J Neurol Neurosurg Psychiatry* 2018;89:702–709.

14. Marder K, Wang Y, Alcalay RN, et al. Age-specific penetrance of LRRK2 G2019S in the Michael J. Fox Ashkenazi Jewish LRRK2 Consortium. *Neurology* 2015;85:89–95.
15. Nichols WC, Pankratz N, Marek DK, et al. Mutations in GBA are associated with familial Parkinson disease susceptibility and age at onset. *Neurology* 2009;72:310–316.
16. Xiao B, Deng X, Ng EY, et al. Association of LRRK2 haplotype with age at onset in Parkinson disease. *JAMA Neurol* 2018;75:127–128.
17. Gan-Or Z, Amshalom I, Kilarski LL, et al. Differential effects of severe vs mild GBA mutations on Parkinson disease. *Neurology* 2015;84:880–887.
18. Escott-Price V, International Parkinson's Disease Genomics Consortium, Nalls MA, et al. Polygenic risk of Parkinson disease is correlated with disease age at onset. *Ann Neurol* 2015;77:582–591.
19. Zhan X, Hu Y, Li B, Abecasis GR, Liu DJ. RVTESTS: an efficient and comprehensive tool for rare variant association analysis using sequence data. *Bioinformatics* 2016;32:1423–1426.
20. Dorsey ER, Ray Dorsey E, Darwin KC, et al. Virtual research visits and direct-to-consumer genetic testing in Parkinson's disease. *DIGITAL HEALTH* 2015;1:205520761559299.
21. Willer CJ, Li Y, Abecasis GR. METAL: fast and efficient meta-analysis of genomewide association scans. *Bioinformatics* 2010;26:2190–2191.
22. Watanabe K, Taskesen E, van Bochoven A, Posthuma D. Functional mapping and annotation of genetic associations with FUMA. *Nat Commun* 2017;8:1826.
23. Pruim RJ, Welch RP, Sanna S, et al. LocusZoom: regional visualization of genome-wide association scan results. *Bioinformatics* 2010;26:2336–2337.
24. Yang J, Ferreira T, Morris AP, et al. Conditional and joint multiple-SNP analysis of GWAS summary statistics identifies additional variants influencing complex traits. *Nat Genet* 2012;44:369–375, S1–S3.
25. Yang J, Lee SH, Goddard ME, Visscher PM. GCTA: a tool for genome-wide complex trait analysis. *Am J Hum Genet* 2011;88:76–82.
26. Bulik-Sullivan BK, Loh PR, Finucane HK, et al. LD Score regression distinguishes confounding from polygenicity in genome-wide association studies. *Nat Genet* 2015;47:291–295.
27. Brion MJ, Shakhbazov K, Visscher PM. Calculating statistical power in Mendelian randomization studies. *Int J Epidemiol* 2013;42:1497–1501.
28. Sham PC, Purcell SM. Statistical power and significance testing in large-scale genetic studies. *Nat Rev Genet* 2014;15:335–346.
29. Singleton AB, Farrer M, Johnson J, et al. alpha-Synuclein locus triplication causes Parkinson's disease. *Science* 2003;302:841.
30. Polymeropoulos MH, Lavedan C, Leroy E, et al. Mutation in the alpha-synuclein gene identified in families with Parkinson's disease. *Science* 1997;276:2045–2047.
31. Simón-Sánchez J, Schulte C, Bras JM, et al. Genome-wide association study reveals genetic risk underlying Parkinson's disease. *Nat Genet* 2009;41:1308–1312.
32. Nalls MA, Pankratz N, Lill CM, et al. Large-scale meta-analysis of genome-wide association data identifies six new risk loci for Parkinson's disease. *Nat Genet* 2014;46:989–993.
33. Guerreiro R, Ross OA, Kun-Rodrigues C, et al. Investigating the genetic architecture of dementia with Lewy bodies: a two-stage genome-wide association study. *Lancet Neurol* 2018;17:64–74.
34. Pihlstrom L, Blauwendraat C, Cappelletti C, et al. A comprehensive analysis of SNCA-related genetic risk in sporadic Parkinson disease. *Ann Neurol* 2018;84:117–129.
35. Dumitriu A, Pacheco CD, Wilk JB, et al. Cyclin-G-associated kinase modifies alpha-synuclein expression levels and toxicity in Parkinson's disease: results from the GenePD Study. *Hum Mol Genet* 2011;20:1478–1487.
36. Jinn S, Drolet RE, Cramer PE, et al. TMEM175 deficiency impairs lysosomal and mitochondrial function and increases alpha-synuclein aggregation. *Proc Natl Acad Sci U S A* 2017;114:2389–2394.
37. Correia Guedes L, Ferreira JJ, Rosa MM, Coelho M, Bonifati V, Sampaio C. Worldwide frequency of G2019S LRRK2 mutation in Parkinson's disease: a systematic review. *Parkinsonism Relat Disord* 2010;16:237–242.
38. Sidransky E, Nalls MA, Aasly JO, et al. Multicenter analysis of glucocerebrosidase mutations in Parkinson's disease. *N Engl J Med* 2009;361:1651–1661.
39. Gan-Or Z, Giladi N, Rozovski U, et al. Genotype-phenotype correlations between GBA mutations and Parkinson disease risk and onset. *Neurology* 2008;70:2277–2283.
40. Lill CM, Hansen J, Olsen JH, Binder H, Ritz B, Bertram L. Impact of Parkinson's disease risk loci on age at onset. *Mov Disord* 2015;30:847–850.
41. Davis AA, Andruska KM, Benitez BA, Racette BA, Perlmutter JS, Cruchaga C. Variants in GBA, SNCA, and MAPT influence Parkinson disease risk, age at onset, and progression. *Neurobiol Aging* 2016;37:209.e1–209.e7.
42. Liu CC, Liu CC, Kanekiyo T, Xu H, Bu G. Apolipoprotein E and Alzheimer disease: risk, mechanisms and therapy. *Nat Rev Neurol* 2013;9:106–118.
43. Federoff M, Jimenez-Rolando B, Nalls MA, Singleton AB. A large study reveals no association between APOE and Parkinson's disease. *Neurobiol Dis* 2012;46:389–392.
44. Garatachea N, Emanuele E, Calero M, et al. ApoE gene and exceptional longevity: Insights from three independent cohorts. *Exp Gerontol* 2014;53:16–23.
45. Broer L, Buchman AS, Deelen J, et al. GWAS of longevity in CHARGE consortium confirms APOE and FOXO3 candidacy. *J Gerontol A Biol Sci Med Sci* 2015;70:110–118.
46. Klebe S, Golmard JL, Nalls MA, et al. The Val158Met COMT polymorphism is a modifier of the age at onset in Parkinson's disease with a sexual dimorphism. *J Neurol Neurosurg Psychiatry* 2013;84:666–673.
47. Keller MF, Saad M, Bras J, et al. Using genome-wide complex trait analysis to quantify 'missing heritability' in Parkinson's disease. *Hum Mol Genet* 2012;21:4996–5009.
48. Konno T, Ross OA, Puschmann A, Dickson DW, Wszolek ZK. Autosomal dominant Parkinson's disease caused by SNCA duplications. *Parkinsonism Relat Disord* 2016;229(Suppl 1):S1–S6.
49. Ross OA, Braithwaite AT, Skipper LM, et al. Genomic investigation of alpha-synuclein multiplication and parkinsonism. *Ann Neurol* 2008;63:743–750.
50. Soldner F, Stelzer Y, Shivalila CS, et al. Parkinson-associated risk variant in distal enhancer of alpha-synuclein modulates target gene expression. *Nature* 2016;533:95–99.
51. Du TT, Wang L, Duan CL, et al. GBA deficiency promotes SNCA/alpha-synuclein accumulation through autophagic inhibition by inactivated PPP2A. *Autophagy* 2015;11:1803–1820.
52. Mazzulli JR, Xu YH, Sun Y, et al. Gaucher disease glucocerebrosidase and alpha-synuclein form a bidirectional pathogenic loop in synucleinopathies. *Cell* 2011;146:37–52.
53. Bae EJ, Yang NY, Song M, et al. Glucocerebrosidase depletion enhances cell-to-cell transmission of alpha-synuclein. *Nat Commun* 2014;5:4755.
54. Cao YL, Yang YP, Mao CJ, et al. A role of BAG3 in regulating SNCA/alpha-synuclein clearance via selective macroautophagy. *Neurobiol Aging* 2017;60:104–115.
55. Rothaug M, Zunke F, Mazzulli JR, et al. LIMP-2 expression is critical for beta-glucocerebrosidase activity and alpha-synuclein clearance. *Proc Natl Acad Sci U S A* 2014;111:15573–15578.
56. Brockmann K, Schulte C, Hauser AK, et al. SNCA: major genetic modifier of age at onset of Parkinson's disease. *Mov Disord* 2013;28:1217–1221.

## Supporting Data

Additional Supporting Information may be found in the online version of this article at the publisher's web-site.