



University of
Zurich^{UZH}

Zurich Open Repository and
Archive

University of Zurich
Main Library
Strickhofstrasse 39
CH-8057 Zurich
www.zora.uzh.ch

Year: 2019

Pulsatile arterial blood pressure mimicking aortic valve opening during continuous-flow LVAD support: a case report

Paprotny, Matthias ; Ruschitzka, Frank ; Lüders, Bernd ; Wilhelm, Markus J ; Aser, Raed ; Bettex, Dominique ; Flammer, Andreas J ; Rudiger, Alain ; Winnik, Stephan

Abstract: **BACKGROUND** Left ventricular assist devices (LVAD) have become a common treatment option in advanced heart failure. Lack of aortic valve opening during left ventricular unloading is a common complication and associated with a worse outcome. Maintaining a minimum pulse pressure is an important goal during the early postoperative period after LVAD implantation since it is commonly seen as secure sign of aortic valve opening. **AIMS/OBJECTIVE** We report a case of an LVAD-supported patient with early permanent closure of the aortic valve despite a pulse pressure > 15 mmHg at all times following LVAD implantation. We demonstrate how careful assessment of the invasive arterial blood pressure curve can indicate aortic valve closure irrespective of pulsatile blood flow. **METHOD** A 69-year old male patient with terminal ischemic cardiomyopathy was referred for long-term mechanical circulatory support. Due to mild aortic regurgitation both an aortic bioprosthesis and a continuous-flow left ventricular assist device were implanted. Postoperative echocardiography documented a patent aortic bioprosthesis and an acceptable residual systolic left ventricular contractility. During invasive arterial blood pressure monitoring repetitive transient slight blood pressure decreases followed by slight blood pressure increases coincided with programmed LVAD flushing cycles. Permanent pulsatile flow with a pulse pressure of 15 mmHg conveyed systolic opening of the aortic valve. Echocardiography, however, proved early permanent aortic valve closure. In retrospect, transformation of the automated LVAD flushing cycles into visible changes of the arterial blood pressure curve during invasive blood pressure monitoring is indicative of ejection of the complete cardiac output through LVAD itself, and therefore an early clinical sign of aortic valve closure. **DISCUSSION/CONCLUSION** We present this interesting didactic case to highlight caveats during the early postoperative period after LVAD implantation. Moreover, this case demonstrates that careful and differentiated observation of the arterial blood pressure waveform provides crucial information in this unique and growing patient population of continuous-flow LVAD support.

DOI: <https://doi.org/10.1186/s13019-019-1039-z>

Posted at the Zurich Open Repository and Archive, University of Zurich

ZORA URL: <https://doi.org/10.5167/uzh-183890>

Journal Article

Published Version



The following work is licensed under a Creative Commons: Attribution 4.0 International (CC BY 4.0) License.

Originally published at:

Paprotny, Matthias; Ruschitzka, Frank; Lüders, Bernd; Wilhelm, Markus J; Aser, Raed; Bettex, Dominique; Flammer, Andreas J; Rudiger, Alain; Winnik, Stephan (2019). Pulsatile arterial blood pressure mimicking aortic valve opening during continuous-flow LVAD support: a case report. *Journal of Cardiothoracic Surgery*, 14(1):1-4.


DOI: <https://doi.org/10.1186/s13019-019-1039-z>

CASE REPORT

Open Access



Pulsatile arterial blood pressure mimicking aortic valve opening during continuous-flow LVAD support: a case report

Matthias Paprotny¹, Frank Ruschitzka¹, Bernd Lüders¹, Markus J. Wilhelm¹, Raed Aser¹, Dominique Bettex², Andreas J. Flammer¹, Alain Rudiger² and Stephan Winnik^{1*} 

Abstract

Background: Left ventricular assist devices (LVAD) have become a common treatment option in advanced heart failure. Lack of aortic valve opening during left ventricular unloading is a common complication and associated with a worse outcome. Maintaining a minimum pulse pressure is an important goal during the early postoperative period after LVAD implantation since it is commonly seen as secure sign of aortic valve opening.

Aims/objective: We report a case of an LVAD-supported patient with early permanent closure of the aortic valve despite a pulse pressure > 15 mmHg at all times following LVAD implantation. We demonstrate how careful assessment of the invasive arterial blood pressure curve can indicate aortic valve closure irrespective of pulsatile blood flow.

Method: A 69-year old male patient with terminal ischemic cardiomyopathy was referred for long-term mechanical circulatory support. Due to mild aortic regurgitation both an aortic bioprosthesis and a continuous-flow left ventricular assist device were implanted. Postoperative echocardiography documented a patent aortic bioprosthesis and an acceptable residual systolic left ventricular contractility. During invasive arterial blood pressure monitoring repetitive transient slight blood pressure decreases followed by slight blood pressure increases coincided with programmed LVAD flushing cycles. Permanent pulsatile flow with a pulse pressure of ≥ 15 mmHg conveyed systolic opening of the aortic valve. Echocardiography, however, proved early permanent aortic valve closure. In retrospect, transformation of the automated LVAD flushing cycles into visible changes of the arterial blood pressure curve during invasive blood pressure monitoring is indicative of ejection of the complete cardiac output through LVAD itself, and therefore an early clinical sign of aortic valve closure.

Discussion/conclusion: We present this interesting didactic case to highlight caveats during the early postoperative period after LVAD implantation. Moreover, this case demonstrates that careful and differentiated observation of the arterial blood pressure waveform provides crucial information in this unique and growing patient population of continuous-flow LVAD support.

Keywords: Mechanical circulatory support, Left ventricular assist device, Invasive arterial blood pressure monitoring, Aortic valve

* Correspondence: stephan.winnik@usz.ch

¹University Heart Center Zurich, University Hospital Zurich, Raemistrasse 100, 8091 Zurich, Switzerland

Full list of author information is available at the end of the article



Background/introduction

Mechanical circulatory support has advanced considerably within the past two decades [1, 2]. As opposed to first-generation pulsatile left ventricular assist devices (LVAD) which mimicked a systole and diastole, similar to native cardiac physiology, current second and third generation continuous (non-pulsatile) flow devices are much smaller and are associated with increased durability [3]. Their impeller pumps generate continuous flow that serves to continuously unload the left ventricle (LV), from where blood flow is directed through an extra-cardiac graft to the ascending aorta. While LV pressure is reduced, there is an increase in pressure in the ascending aorta, creating a continuous transvalvular pressure gradient. Aortic valve (AV) opening occurs only when left ventricular pressure exceeds the pressure in the ascending aorta. Therefore, AV opening is thought to depend on a) residual left ventricular contractility and b) the amount of LVAD support (full vs. partial). Since LVADs are frequently set to full support, specifically when residual left ventricular contractility is poor, the AV often remains closed throughout the cardiac cycle. Over time, this may lead to valve thrombosis, commissural fusion, reduced AV opening area and, in the long run, to permanent AV closure or even aortic regurgitation (AR) [4, 5]. Systolic AV opening, even if intermittent, is associated with reduced thrombogenicity in the aortic root area [6], which in turn may reduce the risk for neurological events, which are among the most devastating complications of long-term LVAD therapy. The impact of AR in patients with continuous-flow LVAD support is controversial [5]. Yet, AR reduces effective cardiac output, thus elevating left ventricular filling pressures, which may lead to recurrent heart failure symptoms [5, 7–10]. Therefore, in the early postoperative phase, measures are taken to maintain systolic AV opening during continuous-flow LVAD support by carefully orchestrating medical inotropic support and the amount of mechanical left ventricular unloading. Routine invasive arterial blood pressure (BP) monitoring allows assessing pulse pressure (systolic – diastolic pressure) on a beat-to-beat basis [11]. A pulse pressure of > 10 mmHg is targeted, as this is supposed to indicate sufficient AV opening [12]. Here we present a case, highlighting the limitations of this monitoring in the early postoperative phase in the intensive care setting.

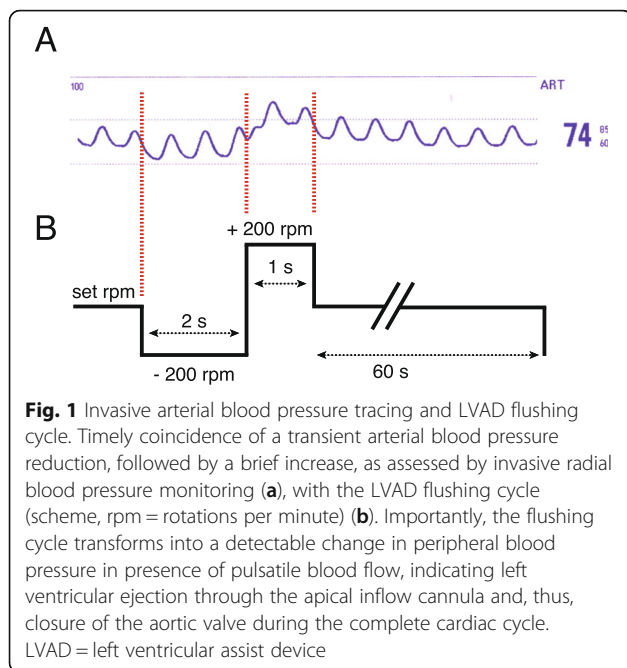
Case presentation

A 69-year old diabetic male with ischemic heart disease, severely reduced ejection fraction and surgical revascularization with quadruple coronary artery bypass grafting in 1997 presented to his family physician with nausea and dyspnea for 24 h in late August 2016. A subacute

non-ST segment elevation myocardial infarction was diagnosed and partial thrombotic occlusion of the internal mammary bypass graft to the distal left anterior descending coronary artery was identified as culprit lesion. However, the remaining flow was reported to be TIMI grade 3. The venous bypass graft to the first diagonal branch was patent, whereas the remaining venous grafts to the intermediate and the posterior descending artery proved chronically occluded, as did all native coronary vessels. LV enddiastolic pressure (LVEDP) was severely increased (40 mmHg) and LV ejection fraction was below 15%. In spite of increasing congestion of the spontaneously breathing patient the remaining coronary flow was judged sufficient, and a conservative medical management was adjudicated and therapeutic anticoagulation and dual antiplatelet therapy were initiated. After initial recompensation the patient experienced repetitive hemodynamically relevant ventricular tachycardia that could not be controlled with ICD- and medical therapy and was associated with the repetitive need for inotropic support (INTERMACS level 3) [13]. Consequently, the patient was referred to our center for evaluation of advanced heart failure therapy. Due to coexistent severe cerebrovascular disease, chronic renal impairment and his advanced age, the patient was deemed ineligible for transplantation. Decision for permanent mechanical circulatory support (destination therapy) using an LVAD was made. For pre-existent mild aortic regurgitation a bioprosthetic AV (Edwards Perimount Magna 3000) was implanted along with a third-generation, continuous-flow LVAD (HeartWare, Framingham, MA). Initial postoperative echocardiography documented a normally working aortic bioprosthesis. Pulse pressure, as assessed by invasive arterial BP monitoring, was constantly ≥ 15 mmHg. At postoperative day 7 hemodynamic monitoring showed a repetitive distinct pattern with a brief decrease followed by a transient increase in peripheral arterial BP (Fig. 1a). This pattern occurred every 60 s and coincided with the LVAD flushing cycle. On close observation of the arterial BP waveform, no diastolic notch was visible between systolic decline and diastolic runoff. Echocardiography testified permanent AV closure despite a residual LV ejection fraction of 15 to 20% (Fig. 2).

Discussion and conclusion

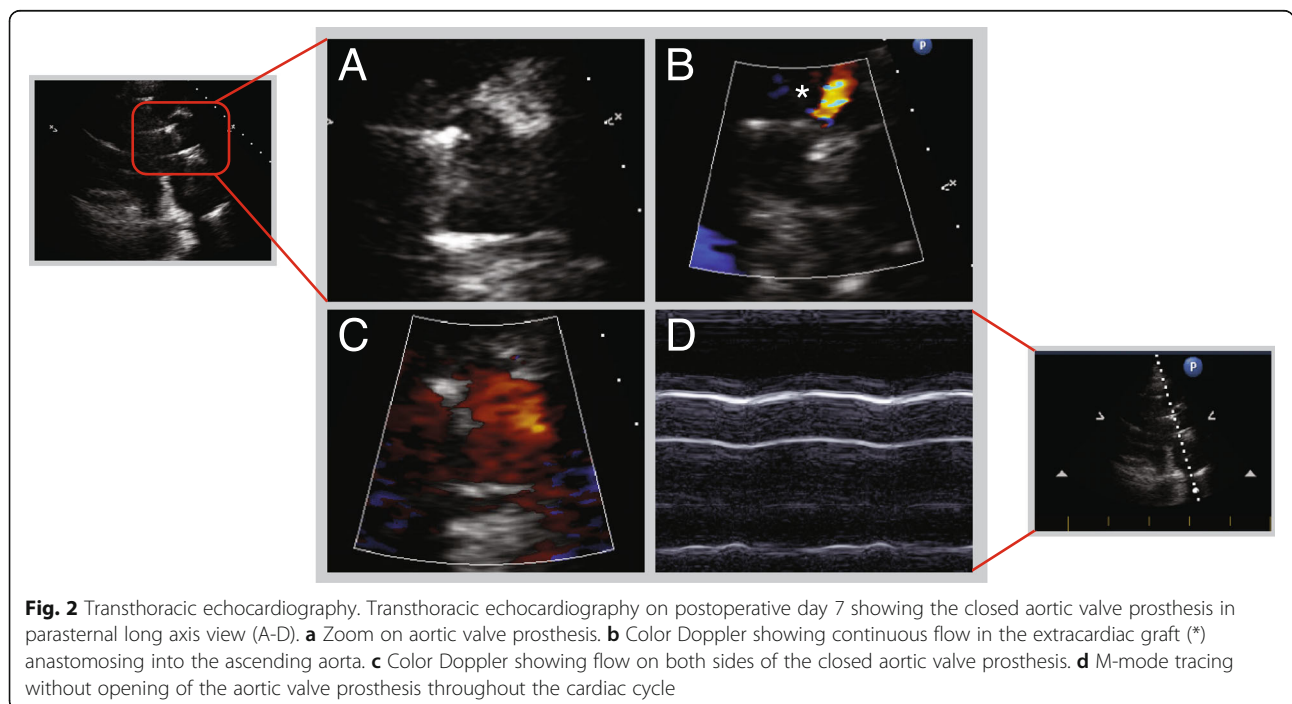
We present a case of continuous-flow LVAD support in a patient with ischemic cardiomyopathy. Even though systolic contractility of the unloaded LV was sufficient to generate pulsatile blood flow, 7 days after LVAD and bioprosthetic AV implantation, no more systolic AV opening could be documented. This



finding was evident by transformation of LVAD flushing cycles into systemic BP changes during preserved pulse pressure ≥ 15 mmHg as assessed by invasive arterial monitoring. The flushing cycle encompasses a reduction of the pump speed by 200 rpm below the set speed for 2 seconds, followed by an increased pump speed to 200 rpm above the set speed for 1 second before the pump returns to the programmed

speed (Fig. 1b). This maneuver is routinely applied in order to prevent clot formation and pump thrombosis. Under normal conditions, pulsatile blood flow, generated by residual systolic contraction of the unloaded left ventricle and consecutive ejection through a patent AV, masks these brief LVAD flushing cycles. In the absence of systolic AV opening, systolic ejection is possible through secondary and tertiary, passive LVAD blood flow paths, which are partially independent of impeller position and speed [14]. Thus, LVAD flushing cycles become apparent as visible transient decrease followed by a brief increase in BP on invasive BP monitoring. Transformation of the LVAD flushing cycle into a visible change in peripheral arterial BP in presence of pulsatile blood flow (preserved pulse pressure > 10 mmHg), therefore indicates systolic ejection from the LV exclusively through the apical LVAD while the AV remains closed.

In summary, the presence of pulsatile blood flow alone is insufficient proof of a patent aortic valve during continuous-flow LVAD support. Even in presence of remaining LV contractility, permanent AV closure may occur. However, transmission of LVAD flushing cycles and disappearance of the dicotic notch in the arterial blood pressure waveform may hint toward AV closure early after continuous-flow LVAD implantation. Careful observation of the arterial blood pressure waveform during the early postoperative phase may provide highly relevant information on both cardiac function and valvular mechanics.



Abbreviations

AR: Aortic regurgitation; AV: Aortic valve; BP: Blood pressure; LV: Left ventricle; LVAD: Left ventricular assist device; LVEDP: Left ventricular enddiastolic pressure

Acknowledgements

Everybody who contributed towards this case report meets authorship criteria. No professional writing services or materials were used.

Authors' contributions

MP, SW, and AR drafted the manuscript, FR, BL, MJW, DB, and AJF critically revised the manuscript for important intellectual content. All authors read and approved the final manuscript.

Funding

No specific funding sources were used for the preparation of this manuscript.

Availability of data and materials

Not applicable.

Ethics approval and consent to participate

We present an observation of a single clinical case without any diagnostic or therapeutic intervention; all information presented is anonymized. Therefore an ethics approval was waived by our local authorities (a committee's reference number is not applicable).

Consent for publication

Consent for publication from the patient described could not be obtained since the patient deceased before the case was drafted.

Competing interests

AJF received speaker honoraria from Medtronic. SW received consulting honoraria from Abbott. The remaining authors have nothing to disclose.

Author details

¹University Heart Center Zurich, University Hospital Zurich, Raemistrasse 100, 8091 Zurich, Switzerland. ²Institute of Anesthesiology, University Hospital Zurich, Zurich, Switzerland.

Received: 23 September 2019 Accepted: 3 December 2019

Published online: 18 December 2019

References

- Mallidi HR, Anand J, Cohn WE. State of the art of mechanical circulatory support. *Tex Heart Inst J*. 2014;41(2):115–20.
- Stewart GC, Givertz MM. Mechanical circulatory support for advanced heart failure: patients and technology in evolution. *Circulation*. 2012;125(10):1304–15.
- Slaughter MS, Rogers JG, Milano CA, Russell SD, Conte JV, Feldman D, Sun B, Tatooles AJ, Delgado RM 3rd, Long JW, Wozniak TC, Ghumman W, Farrar DJ, Frazier OH, HeartMate III. Advanced heart failure treated with continuous-flow left ventricular assist device. *N Engl J Med*. 2009 Dec 03;361(23):2241–51.
- John R, Mantz K, Eckman P, Rose A, May-Newman K. Aortic valve pathophysiology during left ventricular assist device support. *J Heart Lung Transplant*. 2010;29(12):1321–9.
- Cowger J. Aortic regurgitation during continuous-flow left ventricular assist device support: an insufficient understanding of an insufficient lesion. *J Heart Lung Transplant*. 2016 Aug;35(8):973–5.
- Mahr C, Chivukula VK, McGah P, Prisco AR, Beckman JA, Mokadam NA, Aliseda A. Intermittent Aortic Valve Opening and Risk of Thrombosis in Ventricular Assist Device Patients. *ASAIO J*. 2017;63(4):425–32.
- Deo SV, Sharma V, Cho YH, Shah IK, Park SJ. De novo aortic insufficiency during long-term support on a left ventricular assist device: a systematic review and meta-analysis. *ASAIO J*. 2014;60(2):183–8.
- Holtz J, Teuteberg J. Management of aortic insufficiency in the continuous flow left ventricular assist device population. *Curr Heart Fail Rep*. 2014;11(1):103–10.
- Imamura T, Kinugawa K, Fujino T, Inaba T, Maki H, Hatano M, Kinoshita O, Nawata K, Kyo S, Ono M. Aortic insufficiency in patients with sustained left ventricular systolic dysfunction after axial flow assist device implantation. *Circ J*. 2015;79(1):104–11.
- Toda K, Fujita T, Domae K, Shimahara Y, Kobayashi J, Nakatani T. Late aortic insufficiency related to poor prognosis during left ventricular assist device support. *Ann Thorac Surg*. 2011 Sep;92(3):929–34.
- Nirmalan MDP. Broader applications of arterial pressure wave form analysis. *Continn Educ Anaesth Crit Care Pain*. 2014;14(6):285–90.
- Myers TJ, Bolmers M, Gregoric ID, Kar B, Frazier OH. Assessment of arterial blood pressure during support with an axial flow left ventricular assist device. *J Heart Lung Transplant*. 2009 May;28(5):423–7.
- Stevenson LW, Pagani FD, Young JB, Jessup M, Miller L, Kormos RL, Naftel DC, Ullisney K, Desvigne-Nickens P, Kirklin JK. INTERMACS profiles of advanced heart failure: the current picture. *J Heart Lung Transplant*. 2009;28(6):535–41.
- GR HM, Bonnell M, Elahinia M. Rotary mechanical circulatory support systems. *J Rehabil Assist Technol Eng*. 2017;4:1–24.

Publisher's Note

Springer Nature remains neutral with regard to jurisdictional claims in published maps and institutional affiliations.

Ready to submit your research? Choose BMC and benefit from:

- fast, convenient online submission
- thorough peer review by experienced researchers in your field
- rapid publication on acceptance
- support for research data, including large and complex data types
- gold Open Access which fosters wider collaboration and increased citations
- maximum visibility for your research: over 100M website views per year

At BMC, research is always in progress.

Learn more biomedcentral.com/submissions

