

# Seafloor biodiversity of Canada's three oceans: Patterns, hotspots and potential drivers

Chih-Lin Wei<sup>1</sup>  | Mathieu Cusson<sup>2</sup>  | Philippe Archambault<sup>3</sup>  | Renald Belley<sup>4</sup>  |  
Tanya Brown<sup>5</sup> | Brenda J. Burd<sup>6</sup> | Evan Edinger<sup>5</sup> | Ellen Kenchington<sup>7</sup>  |  
Kent Gilkinson<sup>8</sup> | Peter Lawton<sup>9</sup> | Heike Link<sup>10</sup>  | Patricia A. Ramey-Balci<sup>11</sup>  |  
Ricardo A. Scrosati<sup>12</sup>  | Paul V. R. Snelgrove<sup>13</sup> 

<sup>1</sup>Institute of Oceanography, National Taiwan University, Taipei, Taiwan

<sup>2</sup>Département des sciences fondamentales & Québec-Océan, Université du Québec à Chicoutimi, Chicoutimi, QC, Canada

<sup>3</sup>Département de biologie & Québec-Océan/Takuvik, Université Laval, Québec, QC, Canada

<sup>4</sup>Fisheries and Oceans Canada, Maurice Lamontagne Institute, Mont-Joli, QC, Canada

<sup>5</sup>Department of Geography, Memorial University of Newfoundland, St. John's, NL, Canada

<sup>6</sup>Institute of Ocean Sciences, Fisheries and Ocean Canada, Sidney, BC, Canada

<sup>7</sup>Bedford Institute of Oceanography, Fisheries and Ocean Canada, Dartmouth, NS, Canada

<sup>8</sup>Northwest Atlantic Fisheries Centre, Fisheries and Ocean Canada, St. John's, NL, Canada

<sup>9</sup>Biological Station, Fisheries and Oceans Canada, St. Andrews, NB, Canada

<sup>10</sup>Department of Maritime Systems, Faculty of Interdisciplinary Research, University of Rostock, Rostock, Germany

<sup>11</sup>College of Sciences, Koç University, Istanbul, Turkey

<sup>12</sup>Department of Biology, St. Francis Xavier University, Antigonish, NS, Canada

<sup>13</sup>Department of Ocean Sciences and Biology, Memorial University of Newfoundland, St. John's, NL, Canada

## Correspondence

Mathieu Cusson, Département des sciences fondamentales & Québec-Océan, Université du Québec à Chicoutimi, Chicoutimi, QC

## Abstract

**Aim:** We examined the relationships between bathymetry, latitude and energy and the diversity of marine benthic invertebrates across wide environmental ranges of Canada's three oceans.

**Location:** Canadian Pacific, Arctic and Atlantic Oceans from the intertidal zone to upper bathyal depths, encompassing 13 marine ecoregions.

**Methods:** We compiled 35 benthic datasets that encompass 3,337 taxa (70% identified to species and 21% to genus) from 13,172 samples spanning 6,117 sites. Partitioning the analyses by different gear types, ecoregions or sites, we used Hill numbers to examine spatial patterns in  $\alpha$ -diversity. We used resampling and extrapolation to standardized sampling effort and examined the effects of depth, latitude, chemical energy (export particulate organic carbon [POC] flux), thermal energy (bottom temperature) and seasonality of primary production on the benthic biodiversity.

**Results:** The Canadian Arctic harboured the highest benthic diversity (e.g. epifauna and common and dominant infauna species), whereas the lowest diversity was found in the Atlantic. The Puget Trough (Pacific), Beaufort Sea, Arctic Archipelago, Hudson Bay, Northern Labrador and Southern Grand Bank (Atlantic) were the "hotspots" of diversity among the ecoregions. The infauna and epifauna both exhibited hump-shaped diversity–depth relationships, with peak diversity near shelf breaks; latitude (positively) predicted infaunal diversity, albeit weakly. Food supply, as inferred from primary production and depth, was more important than thermal energy in controlling diversity patterns. Limitations with respect to calculating POC flux in coastal (e.g. terrestrial runoff) and ice-covered regions or biological interactions may explain the negative POC flux–infaunal diversity relationship.

**Main Conclusions:** We show previously unreported diversity hotspots in the Canadian Arctic and in other ecoregions. Our analyses reveal potential controlling mechanisms of large-scale benthic biodiversity patterns in Canada's three oceans,

This is an open access article under the terms of the Creative Commons Attribution License, which permits use, distribution and reproduction in any medium, provided the original work is properly cited.

© 2019 The Authors. *Diversity and Distributions* published by John Wiley & Sons Ltd.

G7H 2B1, Canada.  
Email: mathieu.cusson@uqac.ca

#### Funding information

Natural Sciences and Engineering Research Council of Canada (NSERC); Ministry of Science and Technology of Taiwan, Grant/Award Number: MOST 108-2611-M-002-001

Editor: K. C. Burns

which are inconsistent with the prevailing view of seafloor energy–diversity relationships. These results provide insightful information for conservation that can help to implement further MPA networks.

#### KEYWORDS

alpha diversity, Arctic Ocean, Atlantic Ocean, benthic invertebrates, biodiversity conservation, energy–diversity relationship, marine protected area, Pacific Ocean, productivity–diversity relationship, seafloor biodiversity

## 1 | INTRODUCTION

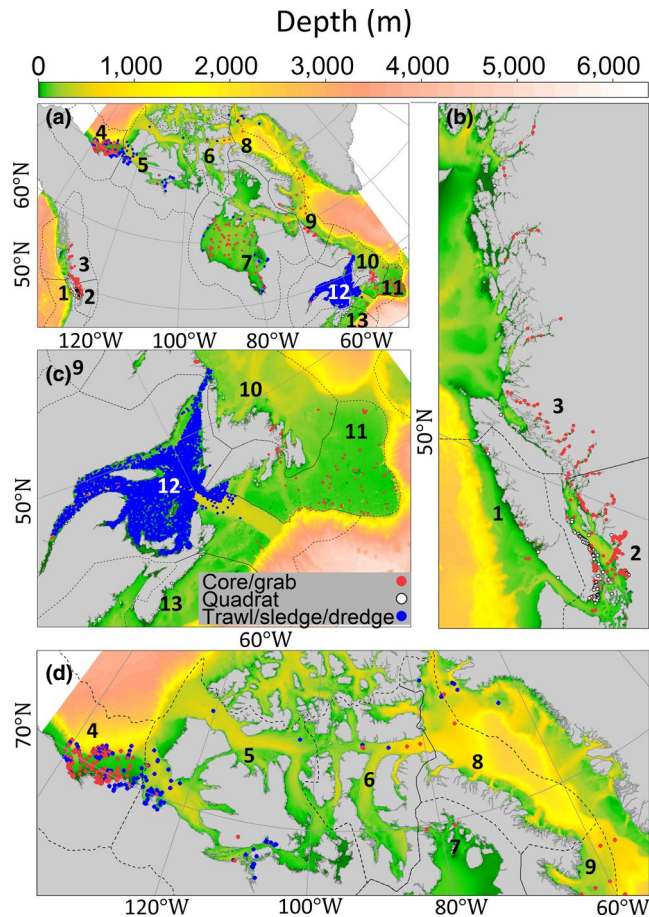
Canada has the longest coastline of any country in the world (243,791 km), encompassing more territorial waters (2,687,667 km<sup>2</sup> within 12 nautical miles) than all European countries and the United States of America combined. The vast Canadian waters span the northeast Pacific, Arctic and northwest Atlantic Oceans, and can be further divided into coastal and shelf marine ecoregions (Figure 1a, modified from Spalding et al., 2007), covering a surface area of approximately 2% of the total area of the world's oceans (DFO, 2008). We hereafter refer to the immense Canadian coastline and the expanse of the oceans as “Canada's Three Oceans” (Archambault et al., 2010). Moreover, as a signatory to the United Nations (UN) Convention on Biological Diversity (CBD) and under its own Oceans Act (1996), Canada is responsible for the “management of estuarine, coastal and marine ecosystems” including implementation of marine protected areas (MPAs) for “the conservation and protection of marine areas of high biodiversity or biological productivity.” The rapid advancement in Canada's marine protected areas (MPAs) network in several marine bioregions is partly motivated to fulfil the Aichi 2020 targets to conserve 10% of coastal and marine areas (Aichi Biodiversity Targets, 2010). Despite recent progress in the establishment of marine protected areas (on 1 August 2019, about 794 000 km<sup>2</sup> or 13.9%; DFO, 2019), about half of these areas, as marine refuges, will allow activities such as drilling and fishing and will require good management plans beyond 2020 targets (Gies, 2019) as well as a better understanding of the marine biodiversity for conservation purposes. Existing efforts to monitor macrobenthos within Canadian protected areas vary by ecoregion and specific geographic scope (e.g. within small coastal MPAs vs. across large deep-water MPAs). To our knowledge, there is no systematic, consistently applied methodology.

The lack of synthesis for existing biodiversity datasets across Canada has hindered the assessment of marine biodiversity, a critical step towards identifying ecologically important areas for MPA planning and ecosystem-based conservation and management (Archambault et al., 2010; DFO, 2010; Myers, Mittermeier, Mittermeier, Fonseca, & Kent, 2000). This gap results from limited spatial and temporal coverage in individual sampling efforts that cannot evaluate large-scale patterns or provide comprehensive information on the scale of problems or threats faced within Canada's three oceans. As is true elsewhere, these threats include, among

others, overfishing (Costello et al., 2016), invasive species (Goldsmith, Howland, & Archambault, 2014; Molnar, Gamboa, Revenga, & Spalding, 2008), climate change (Cheung et al., 2009), eutrophication and pollution (Diaz & Rosenberg, 2008), habitat destruction (Halpern et al., 2008) and sea-level rise (Rignot, Velicogna, Broeke, Monaghan, & Lenaerts, 2011). These threats punctuate the critical need to bring together existing datasets to establish a comprehensive assessment of biodiversity and form the basis to evaluate any concurrent or future impacts of climate-related changes and human activities on marine ecosystems. Such information can also inform efforts to identify ecologically important areas to aid effective conservation with MPA network design.

Benthic invertebrates are important bioindicators of ocean health and an essential component of monitoring and assessment programmes nationally and internationally (e.g. Borja & Dauer, 2008; Van Hoey et al., 2010). Their relatively low mobility as juveniles and adults generally integrates environmental conditions and perturbations over time (Bilyard, 1987), resulting in prolonged and maximum exposure to disturbances/stressors. Limited mobility also simplifies quantification, thus supporting broad ranges of indicators and diversity measures in developing strategies for ecosystem-based conservation. Moreover, they are trophically diverse and exhibit species-specific tolerances or sensitivity to organic enrichment and eutrophication, typically leading to changes in biodiversity patterns (Borja, Franco, & Pérez, 2000; Pearson & Rosenberg, 1978).

In many regions of the world's oceans, benthic diversity increases towards bathyal depths, with a continuum of species turnover (Carney, 2005; Rex & Etter, 2010; Wei et al., 2010). Past studies attribute this pattern to decreasing detrital carbon flux with depth (Rex et al., 1993) coupled with decreasing densities and thus relaxation of competitive exclusions (Huston, 1979; McClain & Schlacher, 2015; Rex & Etter, 2010). Diversity usually plateaus at mid-bathyal depths, but further food limitation results in declines towards abyssal depths (Smith, Leo, Bernardino, Sweetman, & Arbizu, 2008). In addition, multiple studies report declines in benthic diversity towards polar latitudes (Gage, Lamshead, Bishop, Stuart, & Jones, 2004; Hillebrand, 2004; Rex et al., 1993; Rivadeneira, Thiel, González, & Haye, 2011; Roy, Jablonski, Valentine, & Rosenberg, 1998; Woolley et al., 2016). Hypotheses to explain latitudinal diversity patterns in marine environments include lower speciation rate in colder climates (Tittensor et al., 2010), greater disturbances induced by seasonal pulses and instability of food supplies in higher latitudes (McClain



**FIGURE 1** (a) Distribution of the three oceans of benthic biodiversity (TOBB) database based on a Lambert conic conformal projection. Symbol colours indicate sampling gears. The zoom-in map shows the data distribution (b) in the Temperate Northern Pacific Ocean, (c) Temperate Northern Atlantic Ocean and (d) the Arctic. Numbers in bold indicate marine ecoregions (Spalding et al., 2007), including the Northern Temperate Pacific Ocean: (1) Oregon, Washington, Vancouver Coast and Shelf, (2) Puget Trough/Georgia Basin, (3) North American Pacific Fiordland; Arctic Ocean, (4) Beaufort Sea—continental coast and shelf, (5) Beaufort-Amundsen-Viscount Melville-Queen Maud, (6) Lancaster Sound, (7) Hudson Complex, (8) Baffin Bay—Davis Strait, (9) Northern Labrador, (10) Northern Grand Banks—Southern Labrador; and Northern Temperate Atlantic Ocean, (11) Southern Grand Banks—South Newfoundland, (12) Gulf of St. Lawrence—Eastern Scotian Shelf, (13) Scotian Shelf

& Schlacher, 2015; Rex et al., 1993) and ongoing migrations of species from lower to higher latitudes (Jablonski et al., 2013; Jablonski, Roy, & Valentine, 2006). Current evidence, however, suggests that thermal and chemical energy (i.e. temperature and food supply) are likely the main drivers of macro-ecological diversity patterns on the seafloor (Costello & Chaudhary, 2017; McClain, Allen, Tittensor, & Rex, 2012; Tittensor, Rex, Stuart, McClain, & Smith, 2011; Woolley et al., 2016). Whereas temperature appears to exert a dominant influence at long time-scales (Yasuhara & Danovaro, 2016), studies of contemporary environments suggest an overwhelming influence of

food supply on seafloor biodiversity (McClain et al., 2012; Tittensor et al., 2011; Wei & Rowe, 2019; Woolley et al., 2016).

To date, the best available syntheses of benthic macrofaunal ( $\geq 0.5$  or 1 mm in size) biodiversity for Canada's three oceans reported 2,127 species (Archambault et al., 2010; Cusson, Archambault, & Aitken, 2007). However, this number of reported species underestimates biodiversity given: (a) inconsistent taxonomic information across datasets, (b) estimates were not corrected for unequal sampling effort among regions, (c) omission of known published biodiversity datasets, (d) lack of information on key benthic habitats and (e) lack of abundance information. The willingness/capacity for individual project investigators to contribute their biodiversity data further constrained this estimate.

In this study, we examine energy–diversity relationships by modelling the effects of temperature (thermal energy), food supply and the seasonal pulses of food supply (both chemical energy) on diversity across the wide environmental gradients of the Canadian Pacific, Arctic and Atlantic Ocean environments. We extended the previous effort (Archambault et al., 2010) by using additional quantitative, taxonomically standardized and spatially/temporally referenced community data to infer the underlying mechanism(s) driving seafloor biodiversity patterns. This more comprehensive database for Canada's three oceans of benthic biodiversity (TOBB database) provides a more robust baseline from which to evaluate the effectiveness of ecosystem-based management approaches, including the establishment of conservation goals and monitoring programmes for MPA networks and in assessing concomitant impacts of economic development and climate changes on benthic biodiversity within Canada's territorial waters.

## 2 | METHODS

### 2.1 | Data compilation

We compiled thirty-five datasets collected between 1953 and 2012 encompassing 13,172 samples from 6,117 sites among 13 marine ecoregions (Spalding et al., 2007), extending from intertidal zones to 1,072-m depth across Canada's three oceans (see Table S1, metadata information of the TOBB database). Although Fisheries and Oceans Canada defines ecoregions somewhat differently than Spalding et al. (2007), we chose the latter approach because it is well-recognized internationally, thus facilitating comparison with ecoregions elsewhere globally. Here, we define “sites” as the records in a single  $2 \times 2$  km grid based on cylindrical equal-area projection. Various sampling gears were used in different datasets (Figure 1; Table S1). Approximately 46.5% of records were collected with trawl, sledge or dredge (epifauna) summing to 86.9% of all sites, 24.4% with core or grab (infauna) adding to 11.3% of sites, and 28.6% of records were collected with quadrat (intertidal epifauna) representing 1.5% of all sites (Table S2). Overall, about 39.1% of records include quantitative information (either count, density or biomass); 60.9% of records report only presence/absence (Figure S1). The taxonomic information from each

dataset was validated to the lowest possible taxonomic levels using the World Register of Marine Species (WoRMS), allowing comparison of taxonomic lists among the datasets. For incorrect original species names (from data providers) that are now assigned (by WoRMS) to more than one accepted species names, we selected the accepted species name with known records in or near Canada's three oceans. We then used the unique "AphiaID\_accepted" from WoRMS as an identifier to define taxonomic units across different datasets.

We downloaded decadal average (1955–2012) bottom temperature from the World Ocean Atlas (WOA) 2013 v2 (from 102 standard depth layers, Table S3; Figure S1) and calculated export POC flux (or food supplies) to the seafloor using Lutz et al.'s algorithm (2007) based on mean and seasonality (standard deviation/mean) of monthly surface net primary production (NPP, see below), as well as the export depth below the euphotic layer. We calculated euphotic layer depth from mean monthly chlorophyll-*a* (CHLA) concentrations using Morel and Berthon's (1989) case I model and obtained the monthly surface NPP (vertically generalized production model, VGPM) and CHLA concentrations (1998–2014) from the Ocean Productivity web portal (Table S3). We calculated export depth by subtracting the euphotic depth from water depth based on the ETOPO1 Global Relief Model (Table S3; Figure 1). All environmental layers were re-gridded by bilinear interpolation to 2 × 2 km grids based on cylindrical equal-area projection and extracted by the geographic coordinates of the sampling "sites." Appendix S1 provides greater detail on biotic and environmental data compilation (see also Figure S2). We did not extract environmental data for intertidal habitats and shallow shelf areas where calculated euphotic depth exceeds water depth.

## 2.2 | Data analysis

We measured benthic invertebrate biodiversity using Hill numbers (Hill, 1973), or the effective numbers of equally abundant species (Chao & Jost, 2010). The Hill number is defined as

$${}^qD = \left( \sum_{i=1}^S p_i^q \right)^{1/(1-q)}, \quad (1)$$

in which  $S$  is the number of species in a sample and  $p_i$  is the relative abundance of  $i$ th species. The order  $q$  controls the sensitivity of Hill numbers to species relative abundance, and thus, a larger  $q$  gives more weight to common species. For example,  $q = 0$  gives equal weights to all species, and thus, Equation 1 reduces to species richness. When  $q$  approximates 1, Equation 1 reduces to

$${}^qD = \exp \left( - \sum_{i=1}^S p_i^q \log \log (p_i) \right). \quad (2)$$

Equation 2 is thus the exponential of familiar Shannon entropy, measuring the effective numbers of common species. When  $q = 2$ , Equation 1 reduces to

$${}^qD = \left( \sum_{i=1}^S p_i^q \right)^{-1}. \quad (3)$$

This equation is equivalent to the inverse of the Gini Simpson index, measuring the effective numbers of dominant species. We considered the three most widely used Hill numbers, including  $q = 0$  (species richness),  $q = 1$  (exponential of Shannon index) and  $q = 2$  (inverse of Simpson index), allowing us to examine the diversity of total, common and dominant species based on the same unit (hypothetical numbers of species with equal abundance) in a unified framework (Chao & Jost, 2010; Magurran, 2004).

We analysed data separately by sampling gears and whether the data contain occurrence or abundance information. For example, we considered quadrat samples as occurrence data, because some of the quadrat data reported per cent cover and others reported occurrence of each species, whereas the core/grab and trawl/dredge/sledge samples contain either occurrence or abundance data. Only the data containing abundance information were used to estimate the sample-based Hill numbers. For ecoregion-level analysis, all data were first converted to presence/absence and then to incidence probability within each region before computing the Hill numbers in the same way as the abundance data. In order to standardize sampling efforts, we bootstrap-resampled (1,000 times) one to  $m$  numbers of samples (from the occurrence data) and one to  $m$  numbers of individuals (from the abundance data) to produce smooth mean sampling curves of the Hill numbers (Figures S3 and S4). We adapted a rarefaction and extrapolation method developed by Chao et al. (2013) to standardize the Hill numbers among ecoregions (Figure S3) or sites (Figure S4). That is, when  $m \leq$  observed numbers of the sample in an ecoregion/individual in a sample, we extracted the Hill numbers from the rarefaction part of the sampling curve; when  $m >$  observed numbers of the sample in an ecoregion/individual in a sample, we extracted the Hill numbers from the extrapolated part of the sampling curves. Given the heterogeneity in data distribution and varying sampling efforts (Figure 1; Table S2), we computed Hill numbers from  $m = 1$  to 1,000 randomly selected samples to construct sample-based accumulation curves across the three oceans. For simplicity, the Hill numbers based on  $m = 200$  randomly selected samples from each ecoregion (hundreds to thousands of kilometre scales) and  $m = 100$  randomly selected individuals from each site (kilometre scale) were used for further analysis. We also hereafter refer to the Hill numbers of  $q = 0$  to 2 from standardized sampling effort as "species richness," "exponential Shannon" and "inverse Simpson" indices, respectively. Appendix S1 provides details and rationales for using Hill's numbers and interpolation/extrapolation methods.

Only individual-based Hill numbers calculated from quantitative data (core/grab or trawl/sledge/dredge) were used for statistical modelling. Whereas core/grab data were available for all ecoregions, the quantitative trawl/sledge/dredge data were only available to us from the Arctic Ocean and mostly from Ecoregions 4 & 5 (i.e. the Beaufort Sea) with limited latitudinal variation (Table 1; Figure 1d). Despite dense sampling, the trawl/sledge/dredge in



the Gulf of St. Lawrence only contains occurrence information (Figure 1c). Therefore, we considered latitude and ecoregion in the analyses of core/grab data but not in the trawl/sledge/dredge data.

For the core/grab data, we used linear mixed-effects (LME) model to explore the relationship between Hill numbers (Table 1) and depth or latitudes. We used marine ecoregions as a random factor and set the intercept of each ecoregion to be normally distributed with independent variance structure to account for large-scale variations in diversity estimates. Because unimodal diversity patterns typically occur along a large depth gradient (Rex & Etter, 2010), we added a quadratic depth term to the LME as an additional independent variable. Dependent and independent variables were averaged by site (2-km grid) to reduce the influence of sites with numerous replicates or repeated sampling (in the very limited dataset). To prevent skewness and approximate normal distributions, we first transformed ( $\log_{10}$ ) and then normalized (subtracted by the mean and divided by the standard deviation) water depth and latitude before analysis.

To test for an energy–diversity relationship (McClain et al., 2012; Tittensor et al., 2011; Woolley et al., 2016; Yasuhara & Danovaro, 2016) and evaluate whether seasonality of food supplies may affect diversity (McClain & Schlacher, 2015; Rex et al., 1993), we used the same LME design (described above) but added bottom temperature, seafloor export POC flux and seasonality of primary production as additional independent variables to fit the dependent variable, the three diversity estimates from the Hill numbers. Given the limitation of the export flux algorithm, we retained only data sampled below the euphotic depth (approx. 14–56 m) and without missing environmental data (~44.5% of data). Because many benthic studies suggest unimodal productivity–diversity relationships (McClain et al., 2012; Tittensor et al., 2011; Witman, Cusson, Archambault, Pershing, & Mieszkowska, 2008), we added a quadratic term of food supply proxy (export POC flux) as an independent variable, acknowledging that interpretation of export POC flux in coastal environments requires great caution. All environmental data were normalized (subtracted by the mean and divided by the standard deviation) before analysis.

We estimated the parameter coefficients of LMEs by model averaging from all possible combinations of the models and selected the best model based on the lowest Akaike information criterion, corrected for small sample size (AICc) (Burnham & Anderson, 2002). The relative importance of the independent variable was estimated by summing their Akaike weights, which measures the likelihood of the presence of a particular factor in the average model. We assessed the model performance of the best LMEs (with lowest AICc) by 10-fold cross-validation, in which we validated the models re-fitted from every 9/10 of the data with the remaining 1/10 of data to calculate the total variance explained ( $R^2$ ). The mean, standard deviation and 95% confidence interval of the model fit were calculated by 1,000 bootstraps and plotted against the independent variables to evaluate model behaviour.

We used the same sets of independent variables except for latitude to fit multiple linear regressions (without a random factor) to the Hill numbers of the trawl/sledge/dredge data, assessing model

performance based on the adjusted  $R^2$  of the linear regression. Even though this analysis used no sledge and dredge data, we nonetheless refer to the terms “trawl/sledge/dredge data” for consistency with the previous analysis.

## 3 | RESULTS

### 3.1 | Diversity among oceans and ecoregions

Our database contains a total of 3,819 taxa: 2,670 identified to species, 794 to genus, 227 to family, 60 to order, 49 to class and 19 to phylum. Among these, 358 Gulf of St. Lawrence taxa (dataset 17, Table S1) are not spatially referenced (sampling coordinates not recorded). When considering the spatially referenced taxa across species, genus and family levels, we documented a total of 3,337 taxa, of which 2,829 taxa were benthic infauna (collected with core/grab). The epifaunal samples (collected with trawl/sledge/dredge, quadrat and camera) added another 508 taxa. We recorded a total of 1,898 taxa in the Pacific (Ecoregions 1–3), 1,552 taxa in the Arctic (Ecoregions 4–10) and 962 taxa in the Atlantic Oceans (Ecoregions 11–13, Figure 1; Table S2).

Pacific species richness accumulation curves in the core/grab analysis were most elevated, followed by the Arctic and Atlantic (Figure 2a). This trend reverses, however, when weighting the common species. That is, the Pacific diversity curves were lower than the Arctic for exponential Shannon (Figure 2b) and even lower than the Atlantic for inverse Simpson indices (Figure 2c). In other words, of the three oceans, Arctic samples yielded highest diversity for common and dominant species (Figure 2b,c). For the trawl/sledge/dredge data, we observed consistently elevated diversity in Arctic accumulation curves ( $q = 0$  to 2) relative to the Atlantic; however, we lack comparable data for the Pacific (Figure 2d–f). For the quadrat data, the Pacific mean diversity curves ( $q = 0$  to 2) were approximately 75%, 70% and 50% more elevated than those for the Atlantic, respectively (Figure 2g–i). Although differences were not dramatic, their 95% confidence intervals were distinctly separate (the 95% CI are too narrow to be visible on the figures).

We also constructed diversity accumulation curves for each gear type and marine ecoregion to compare the three oceans (Figure S3) and, for simplicity, extracted the results of 200 randomly selected samples (Figure 3). Among the core/grab data in the Pacific, highest species richness occurred in Ecoregion 2 (Figure 3a); however, differences among ecoregions dissipated with increased weighting on common and dominant species ( $q = 1$  to 2, Figure 3b,c). The highest diversities among the Arctic core/grab data ( $q = 0$  to 2, Figure 3a–c) were in Ecoregions 4, 7 and 9. We also observed high diversity in Ecoregion 5, especially for the exponential Shannon and inverse Simpson indices (Figure 3b,c). In the Atlantic, Ecoregion 11 had the highest species richness and exponential Shannon index (Figure 3a,b). For the trawl/dredge/sledge data, highest diversity occurred in Ecoregions 4, 5 and 7 ( $q = 0$  to 2) among the Arctic marine ecoregions (Figure 3d–f). These regional

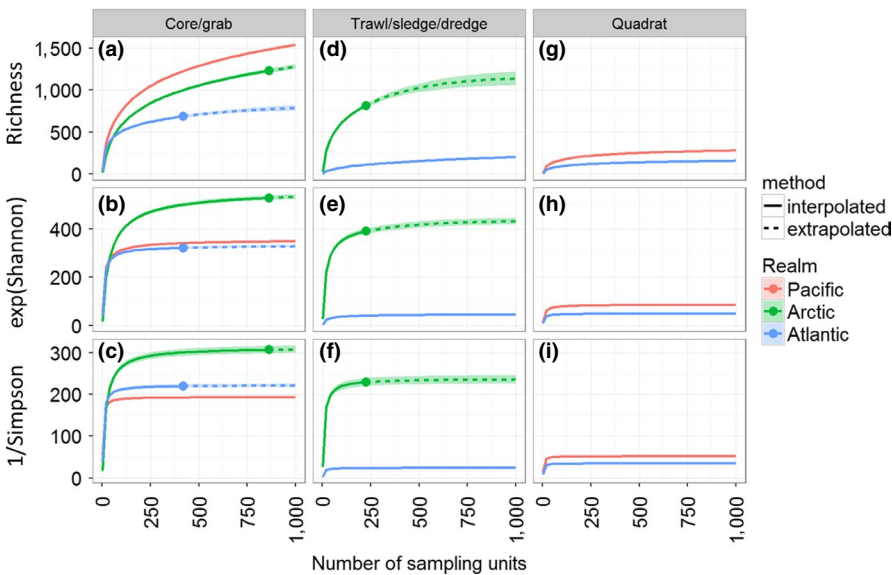
**TABLE 1** Top 3 best regression models (LME) for quantitative core/grab data and simple linear regression models (LM) for quantitative trawl/sledge/dredge data

Order	Intercept	Depth	Depth <sup>2</sup>	Latitude	AICc	AW	R <sup>2</sup> <sub>average</sub>	R <sup>2</sup> <sub>ecoregion</sub>	N
<b>(a) Core/grab</b>									
Richness ( <i>q</i> = 0)	<b>27.1***</b>	<b>7.1***</b>	<b>-10***</b>		3,648	0.70	0.22	0.38	501
	<b>26.9***</b>	<b>7.0***</b>	<b>-10***</b>	1.16	3,650	0.30	0.19	0.38	501
	<b>29.4***</b>		<b>-9***</b>	2.59	3,708	0.00	0.01	0.30	501
exp(Shannon) ( <i>q</i> = 1)	<b>14.9***</b>	<b>4.5***</b>	<b>-5***</b>		3,422	0.67	0.12	0.23	501
	<b>14.8***</b>	<b>4.4***</b>	<b>-6***</b>	0.95	3,423	0.33	0.09	0.23	501
	<b>12.7***</b>	<b>3.4***</b>			3,461	0.00	0.03	0.18	501
1/Simpson ( <i>q</i> = 2)	<b>9.2***</b>	<b>2.8***</b>	<b>-3***</b>		3,113	0.59	0.07	0.14	494
	<b>9.3***</b>	<b>2.7***</b>	<b>-3***</b>	0.83	3,114	0.41	0.04	0.14	494
	<b>8.1***</b>	<b>2.2***</b>			3,132	0.00	0.02	0.10	494
<b>(b) Trawl/sledge/dredge</b>									
Richness ( <i>q</i> = 0)	<b>18.5***</b>	<b>16.9**</b>	<b>-12*</b>				0.31		37
exp(Shannon) ( <i>q</i> = 1)	<b>8.8***</b>	2.9	-1				0.06		37
1/Simpson ( <i>q</i> = 2)	<b>5.9***</b>	-1.7	2				0.02		37

Note: Hill numbers of order *q* = 0 (species richness), *q* = 1 (exponential Shannon index) and *q* = 2 (inverse Simpson index) were based on *m* = 100 randomly selected individuals. Bold font indicates significant parameter coefficient at *p* < .05.

Significance codes: \**p* < .05, \*\**p* < .01, \*\*\**p* < .001.

Abbreviations: AIC<sub>c</sub>, Akaike information criterion corrected for small sample size; AW, Akaike weight; D, log<sub>10</sub> depth; D<sup>2</sup>, (log<sub>10</sub> depth)<sup>2</sup>; I, intercept; L, log<sub>10</sub> latitude; N, numbers of site in the model; R<sup>2</sup><sub>average</sub>, cross-validated R<sup>2</sup> (for core/grab) or adjusted R<sup>2</sup> (for trawl/sledge/dredge) at population level; R<sup>2</sup><sub>ecoregion</sub>, cross-validated R<sup>2</sup> (for core/grab) at ecoregion level.



**FIGURE 2** Species richness (*q* = 0), exponential Shannon index (*q* = 1) and inverse Simpson index (*q* = 2) accumulation curves across Canada's Pacific, Arctic and Atlantic Oceans for benthic samples collected with core/grab (a–c), trawl/sledge/dredge (d–f) and quadrat (g–i). The solid line indicates the interpolated (rarefied) curve, and the dashed line indicates extrapolated accumulation curve based on 1,000 permutations. The shaded area around the accumulation curve shows 95% confidence intervals. The dotted symbol indicates observed diversity

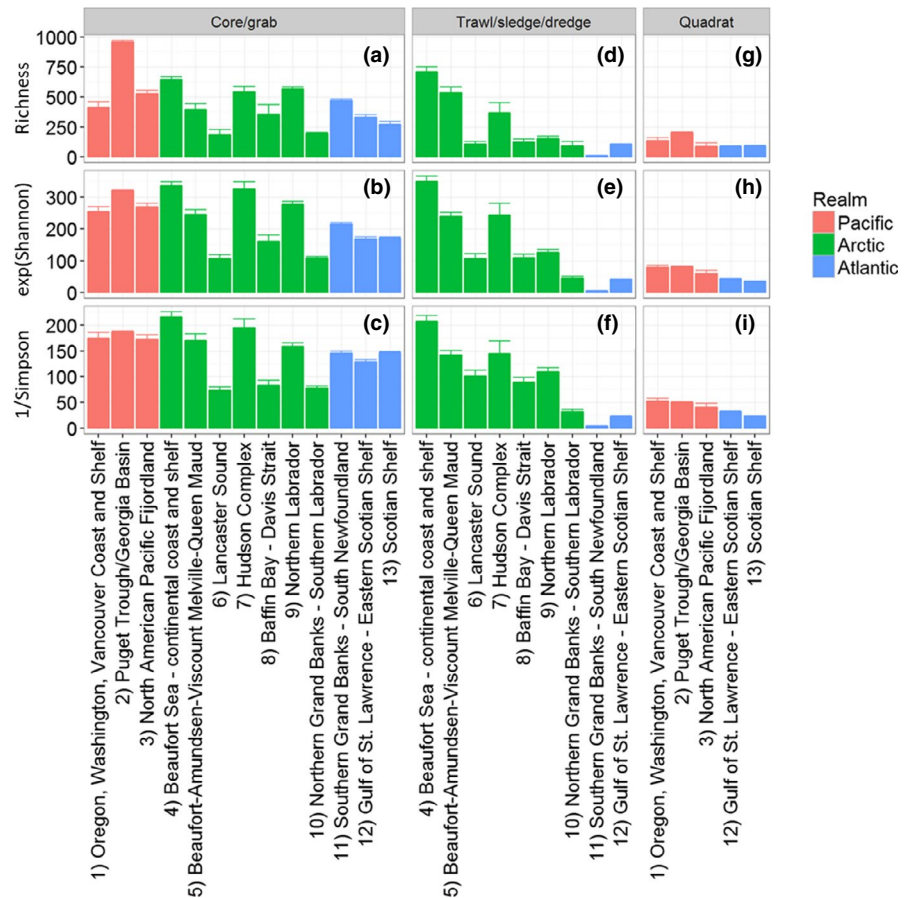
differences also dissipated with increased weighting on common and dominant species (*q* = 1 to 2, Figure 3e,f). Within the Atlantic (primarily the Gulf of St. Lawrence), we found consistently higher species diversity in Ecoregion 12 than Ecoregion 11 (Figure 3d–f). For the quadrat data, Ecoregion 2 had the highest Pacific species richness (Figure 3g); however, differences among ecoregions appeared insignificant for exponential Shannon (Figure 3h) and inverse Simpson indices (Figure 3i). For the Atlantic, the exponential

Shannon and inverse Simpson of the quadrat data (Figure 3h,i) were higher in Ecoregion 12 than in Ecoregion 13.

### 3.2 | Bathymetric and latitudinal variations

For core/grab diversity calculated from 100 randomly selected individuals (by an average of 1,000 bootstrap resampling), the best

**FIGURE 3** Mean species richness ( $q = 0$ ), exponential Shannon index ( $q = 1$ ) and inverse Simpson index ( $q = 2$ ) from 200 randomly selected samples (based on 1,000 permutations) across 13 marine ecoregions for benthic samples collected with core/grab (a–c), trawl/sledge/dredge (d–f) and quadrat (g–i). Error bar shows the 95% confidence intervals. The numbers of samples, sites and taxa in each category can be found in Table S2. The fill colours indicate temperate Pacific, Arctic and temperate Atlantic Oceans



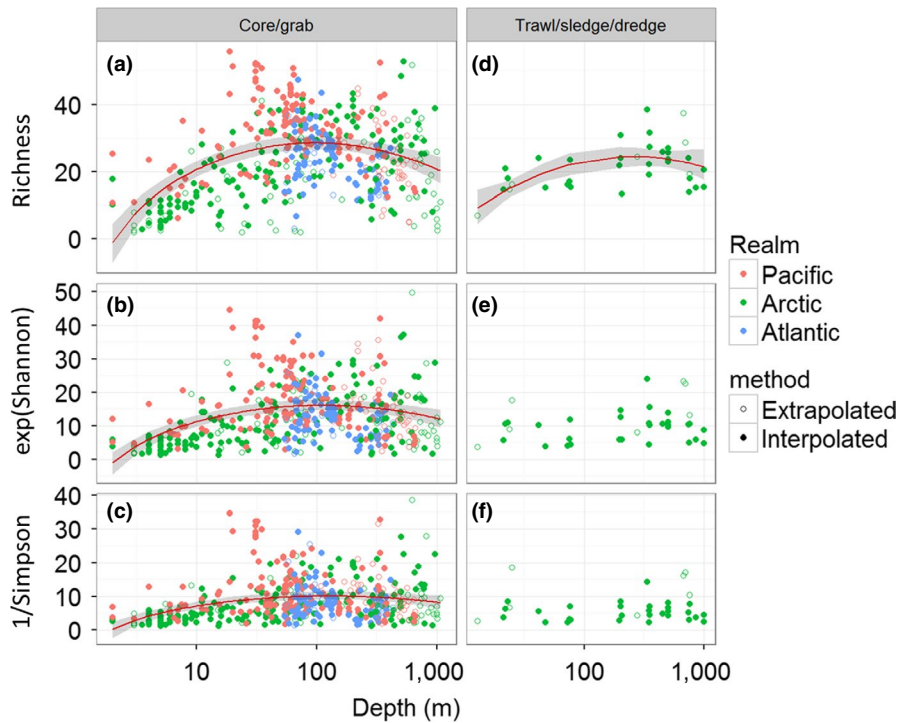
LME models (selected by AICc) retained only water depth and the quadratic depth term as explanatory variables. The best LME models explained 22%, 12% and 7% of the total variation in species richness, exponential Shannon and inverse Simpson indices, respectively ( $R^2_{\text{average}}$ , Table 1a). The best LME predicts that all three species diversity indices increased from intertidal to a maximum diversity at  $\sim 100$  m depth near the shelf break and then declined towards bathyal depths; however, the effects of depth on diversity decline with increasing weight on common and dominant species (i.e. from richness to inverse Simpson; Figure 4a–c). Among the ecoregions, the unimodal diversity–depth relationships were most apparent in Ecoregions 2, 4, 7, 9 and 11 (Figure S5), probably due to low data coverage in other ecoregions. The LME that explained the higher total variance when considering the random factor (or ecoregion) explained 38%, 23% and 14% of variance for species richness, exponential Shannon and inverse Simpson indices, respectively ( $R^2_{\text{ecoregion}}$ , Table 1a). The model averaging all possible LMEs also confirmed hump-shaped depth–diversity relationships with 100% likelihood of including depth in the average models (RI = 1, Table 2). We found no statistical relationship between latitude and any of the three species diversity indices for either of the top three best LME models (Table 1a) or the average model (Table 2).

For the limited trawl/dredge/sledge data from the Arctic, we found a significant unimodal relationship with depth only for species richness based on 100 randomly selected individuals

(Table 1b, Figure 4d). We also found no statistical relationship between depth and exponential Shannon or inverse Simpson indices (Figure 4e,f).

### 3.3 | Environmental correlates with diversity

Pearson correlation coefficients among water depth, latitude and the extracted environmental variables varied from  $-0.5$  to  $+0.5$ . For limited core/grab data (below the euphotic depth and with complementary environmental values), export POC flux was the only environmental variable (excluding depth and latitude) shared in the three best LME models in explaining species diversity indices from 100 randomly selected individuals (Table 3a). Predictive power was lower than for the bathymetric-latitude model (3%–14%, Table 3). Likewise, among all environmental variables, average LME models were most likely (87%–92%) to include export POC flux (Table 4a), which had a significantly negative effect on all three diversity indices (Figure 5). In addition, species richness in the average LME model decreased with increasing seasonal variability in primary production (SVI); however, with low relative importance (RI) compared with export POC flux, whereas the exponential Shannon index varied negatively but slightly concave-upward with export POC flux (Table 4a). The non-significant temperature effect in the average model (Table 4a) nonetheless



**FIGURE 4** Species richness ( $q = 0$ ), exponential Shannon index ( $q = 1$ ) and inverse Simpson index ( $q = 2$ ) as functions of depth from the quantitative core/grab (a–c) and trawl/sledge/dredge samples (d–f). The Hill numbers ( $q = 0, 1$  and  $2$ ) were calculated from 100 randomly selected individuals with 1,000 permutations. The solid circles indicate the rarefied Hill numbers, whereas the open circles indicate extrapolated Hill numbers. The solid line and shaded area indicate 1,000 bootstrap mean and 95% confidence intervals of the best linear mixed-effect (LME) model fit, respectively

positively affected the exponential Shannon index in two of the top three best LME models (Table 3a). Interestingly, latitude played a weak role in the analysis including the environmental parameters.

For the limited trawl/sledge/dredge data (below euphotic depth and with complementary environmental data), only the quadratic

term of export POC flux significantly affected the inverse Simpson index (Tables 3b and 4b).

**TABLE 2** Model average parameter estimate for all quantitative core/grab data

Order	Parameter	Estimate	SE	<i>p</i>	RI
Richness ( $q = 0$ )	I	<b>27.0</b>	<b>1.8</b>	<b>.000</b>	
	D	<b>7.1</b>	<b>0.8</b>	<b>.000</b>	<b>1.00</b>
	D <sup>2</sup>	<b>-10.1</b>	<b>1.1</b>	<b>.000</b>	<b>1.00</b>
	L	1.2	1.5	.434	0.30
exp(Shannon) ( $q = 1$ )	I	<b>14.9</b>	<b>1.2</b>	<b>.000</b>	
	D	<b>4.4</b>	<b>0.6</b>	<b>.000</b>	<b>1.00</b>
	D <sup>2</sup>	<b>-5.5</b>	<b>0.8</b>	<b>.000</b>	<b>1.00</b>
	L	0.9	1.0	.365	0.33
1/Simpson ( $q = 2$ )	I	<b>9.2</b>	<b>0.8</b>	<b>.000</b>	
	D	<b>2.7</b>	<b>0.5</b>	<b>.000</b>	<b>1.00</b>
	D <sup>2</sup>	<b>-3.0</b>	<b>0.6</b>	<b>.000</b>	<b>1.00</b>
	L	0.8	0.7	.223	0.41

Note: Hill numbers of order  $q = 0$  (species richness),  $q = 1$  (exponential Shannon index) and  $q = 2$  (inverse Simpson index) were calculated from 100 randomly selected individuals. Bold font indicates significant coefficient at  $p < .05$ .

Abbreviations: D,  $\log_{10}$  depth; D<sup>2</sup>,  $(\log_{10} \text{ depth})^2$ ; I, intercept; L,  $\log_{10}$  latitude; *p*, *p* value; RI, relative importance; SE, standard error of the model average coefficient.

### 3.4 | Benthic biodiversity predictions

We conducted predictive biodiversity mapping only with core/grab data, because other types of samples did not have sufficient coverage across the three oceans. We input ETOP1 global relief model (i.e. water depth >0) and 13 ecoregions into the best LME models (see parameter coefficients in Table 1a; i.e. only depth-related parameters) to estimate relative species richness, exponential Shannon and inverse Simpson indices (Figure 6). More complex models based on full environmental variables (Table 3a) performed no better than the simple model (based on  $R^2$ , cf. Tables 1a and 3a). In addition, our analyses did not predict intertidal soft-bottom benthic diversity because our input depth started below sea level. Despite the difficulty in mapping variation, average predictions (i.e. not considering the random factor ecoregion) for relative diversity increase away from shore to the continental shelf break (Figure 6a–c). The huge expanses of continental shelves in the Canadian Arctic and Atlantic support large areas of high predictive diversity. Beyond the shelf breaks (~100-m depth), predictive diversity decreases rapidly along the continental slope.

Considering the random factor (i.e. ecoregion) increased model prediction accuracy (higher  $R^2$ , Table 1a) but with discontinuous predictive diversity around ecoregion boundaries (Figure 6d–f). Nevertheless, ecoregion-level predictions demonstrate regional variability, identifying Ecoregions 5, 6, 8, 9 and 13 as potential hotspots of species diversity. Such variations apparently decreased



**TABLE 3** Three best regression models (LME) for selected quantitative core/grab data and simple linear regression models (LM) for selected quantitative trawl/sledge/dredge data

Order	Intercept	Depth	Depth <sup>2</sup>	Latitude	POC	POC <sup>2</sup>	SVI	Temp	AICc	AW	R <sup>2</sup> <sub>average</sub>	R <sup>2</sup> <sub>ecoregion</sub>	N
<b>(a) Core/grab</b>													
Richness ( $q = 0$ )	19.6***	21.8***	-20.3***	2.4*	-2.2		-2.1*		1,696	0.44	0.10	0.12	235
	18.8***	20.6***	-20.3***	2.8***	-2.8***	1.5	-1.4		1,696	0.34	0.13	0.13	235
	19.3***	20.0***	-21.2***	3.6**	-3.2*	1.9	-1.3	1.5	1,697	0.23	0.14	0.15	235
exp(Shan.) ( $q = 1$ )	10.6***	10.0**	-11.9***	2.8**	-2.4**	1.8*		1.6*	1,571	0.53	0.05	0.07	235
	10.2***	10.2*	-10.9**	2.0***	-2.0***	1.4*			1,573	0.26	0.05	0.05	235
	10.6***	10.6**	-11.9***	2.8**	-2.3*	1.5	-0.4	1.6*	1,573	0.20	0.06	0.07	235
1/Simpson ( $q = 2$ )	8.0***			0.6*	-1.1**				1,424	0.42	0.03	0.03	231
	7.3***	6.3*	-6.2*	0.9**	-0.9**				1,424	0.36	0.03	0.03	231
	8.1***			0.7*	-1.1**				1,425	0.23	0.04	0.03	231
<b>(b) Trawl/sledge/dredge</b>													
Richness ( $q = 0$ )	17.5***	18.9*	-12.4*				-1.7		223	0.46	0.28		34
	17.9***	18.3*	-12.5						224	0.31	0.20		34
	19.5***	26.0**	-18.7*					5.7	224	0.23	0.25		34
exp(Shan.) ( $q = 1$ )	10.6***								213	0.34	0.00		34
	12.8***							4.3	213	0.34	0.07		34
	9.3***					1.6			214	0.32	0.06		34
1/Simpson ( $q = 2$ )	4.5***	1.2				2.5**			192	0.56	0.24		34
	6.4**					1.8		2.6	193	0.23	0.25		34
	3.5*					2.7**			194	0.21	0.25		34

Note: Hill numbers of order  $q = 0$  (species richness),  $q = 1$  (exponential Shannon index) and  $q = 2$  (inverse Simpson index) were based on  $m = 100$  randomly selected individuals. Bold font indicates significant parameter coefficient at  $p < .05$ .

Significance codes: \* $p < .05$ , \*\* $p < .01$ , \*\*\* $p < .001$ .

Abbreviations: AIC<sub>c</sub>, Akaike information criterion-corrected for small sample size; AW, Akaike weight; D, log<sub>10</sub> depth; D<sup>2</sup>, (log<sub>10</sub> depth)<sup>2</sup>; I, intercept; L, log<sub>10</sub> latitude; N, numbers of site in the model; POC, export POC flux to seafloor; POC<sup>2</sup>, (export POC flux to seafloor)<sup>2</sup>; R<sup>2</sup><sub>average</sub>, cross-validated R<sup>2</sup> (for core/grab) or adjusted R<sup>2</sup> (for trawl/sledge/dredge); R<sup>2</sup><sub>ecoregion</sub>, cross-validated R<sup>2</sup> (for core/grab) at ecoregion level; SVI, seasonality of primary production; Temp, temperature.

Parameter	Estimate	SE	<i>p</i>	RI	Estimate	SE	<i>p</i>	RI
	(a) Core/grab				(b) Trawl/sledge/dredge			
Richness ( <i>q</i> = 0)								
Intercept	20.4	2.7	.000		19.6	3.5	.000	
D	20.8	6.4	.001	0.96	16.5	10.8	.134	0.74
D <sup>2</sup>	-20.6	5.7	.000	0.98	-12.4	9.0	.178	0.60
L	2.9	0.9	.002	0.85				
POC	-2.7	1.0	.008	0.87	-0.7	2.1	.742	0.26
POC <sup>2</sup>	2.0	1.3	.109	0.55	-1.3	2.2	.561	0.30
Temp	1.6	1.3	.218	0.41	3.7	5.0	.474	0.30
SVI	-1.6	0.8	.044	0.68	-1.8	1.1	.103	0.56
exp(Shannon) ( <i>q</i> = 1)								
Intercept	11.4	1.6	.000		10.2	2.7	.000	
D	10.4	5.5	.062	0.75	3.3	5.0	.519	0.32
D <sup>2</sup>	-10.2	5.2	.049	0.87	0.6	4.6	.895	0.28
L	2.1	0.8	.010	0.92				
POC	-2.0	0.7	.004	0.92	-0.7	1.5	.631	0.26
POC <sup>2</sup>	1.5	0.8	.049	0.69	1.5	1.4	.320	0.36
Temp	1.6	0.9	.095	0.59	4.5	3.4	.208	0.42
SVI	-0.6	0.6	.288	0.38	-1.1	0.9	.237	0.38
1/Simpson ( <i>q</i> = 2)								
Intercept	7.8	0.8	.000		5.8	2.7	.036	
D	4.5	4.1	.265	0.44	1.1	3.6	.769	0.24
D <sup>2</sup>	-4.3	3.7	.238	0.46	0.8	2.9	.789	0.24
L	0.9	0.4	.052	0.77				
POC	-1.1	0.4	.006	0.92	-0.1	1.1	.913	0.22
POC <sup>2</sup>	0.3	0.6	.687	0.32	2.3	1.0	.026	0.74
Temp	0.3	0.7	.692	0.30	4.4	3.1	.172	0.44
SVI	-0.3	0.4	.434	0.30	-0.4	0.7	.579	0.25

Note: Hill numbers of order *q* = 0 (species richness), *q* = 1 (exponential Shannon index) and *q* = 2 (inverse Simpson index) were calculated on *m* = 100 randomly selected individuals. Bold font indicates significant coefficient at *p* < .05.

Abbreviations: D, depth; D<sup>2</sup>, (log<sub>10</sub> depth)<sup>2</sup>; I, intercept; L, log<sub>10</sub> latitude; *p*, *p* value; POC, export POC flux to seafloor; POC<sup>2</sup>, (export POC flux to seafloor)<sup>2</sup>; RI, relative importance; SE, standard error of the model average coefficient; SVI, seasonality of primary production; Temp, temperature.

when weighing more on the common and dominant species and thus considering species evenness (Figure 6e,f).

## 4 | DISCUSSION

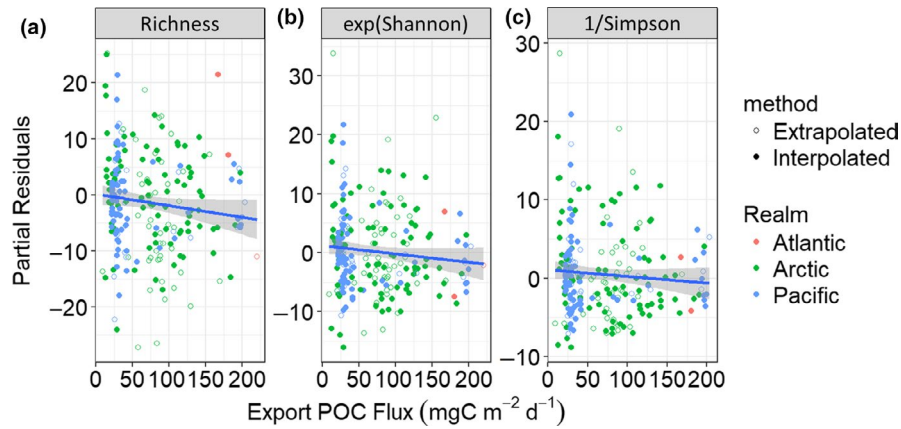
The TOBB database compilation increased the previous report of Canadian marine benthic infauna taxon lists from 2,127 (Archambault et al., 2010) to 2,829 taxa (core/grab data in this study). Adding the benthic epifauna (from trawl/sledge/dredge, quadrat and camera data) increases the total taxon list (3,337 taxa) more than 50% above the previous estimate. However, this number nonetheless clearly underestimates the total numbers of taxa present even within the existing database, because (a) only ~70% of taxa were identified

to species; (b) for consistency, we only considered species names reported by WORMS (with accepted AphiaID); and (c) huge depth ranges and geographic areas of the three oceans remain un-sampled. Therefore, our compilation represents a minimum and very conservative estimate. Further, ongoing efforts to sample and identify marine invertebrates in Canadian waters have already increased the total number of taxa reported here (e.g. Arctic sponges: Murillo et al., 2018).

### 4.1 | Latitudinal variation

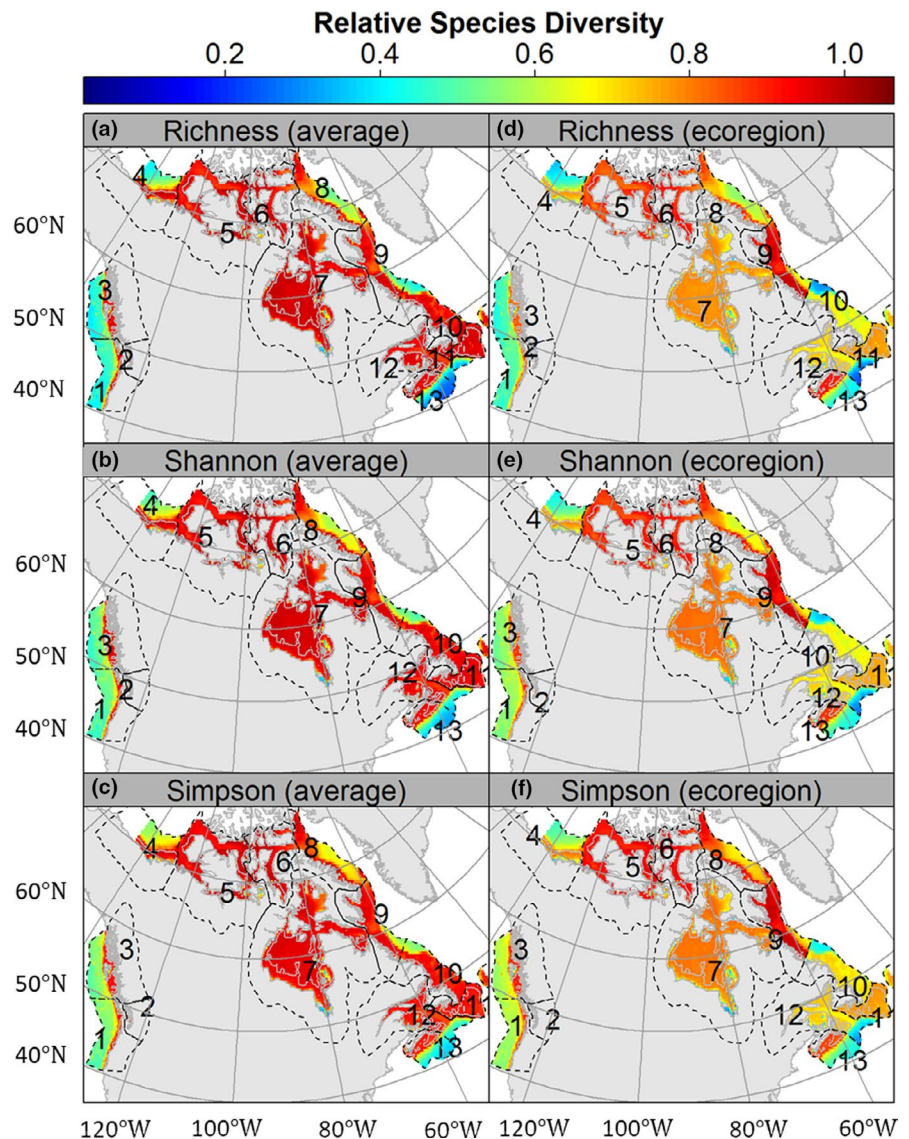
Although several hypotheses predict a decline in diversity with increasing latitude (Costello & Chaudhary, 2017; Hillebrand, 2004;

**TABLE 4** Model average parameter estimate for selected quantitative core/grab and trawl/sledge/dredge data



**FIGURE 5** Partial residual plots showing the relationship between food supply (i.e. export POC flux) and infaunal diversity after taking into account other environmental factors in the best linear mixed-effects (from Table 3a). Panels show the partial residuals of (a) species richness ( $q = 0$ ), (b) exponential Shannon ( $q = 1$ ) and (c) inverse Simpson ( $q = 2$ ) indices. The solid line and shaded area indicate the linear regression fit and its 95% confidence intervals between partial residuals and export POC flux, respectively

**FIGURE 6** (a–c) Average and (d–f) ecoregion-level prediction of relative species richness, exponential Shannon and inverse Simpson indices of quantitative core/grab data. The grey solid lines indicate 100-m isobath. We predicted the infaunal diversity by inserting depth (ETOPO1 global relief model) and 13 marine ecoregions (numbers within dash-line polygons) into the best linear mixed-effect model (Table 1). The predictions are then scaled to between zero and one



Jablonski et al., 2006; McClain & Schlacher, 2015; Rex et al., 1993; Tittensor et al., 2010), we did not find higher diversity accumulation curves in the Canadian Pacific or Atlantic than in the Arctic (Figure 2). In fact, weighting common and dominant species suggests highest benthic diversity in the Arctic. The sample-based Hill numbers further demonstrated highest diversity in the Beaufort Sea, Arctic Archipelago, Hudson Bay and Northern Labrador ecoregions in core/grab and trawl/sledge/dredge sampling (Figure 3). Predictive mapping of individual-based Hill numbers also showed high infaunal diversity (based on core/grab data) around the Canadian Arctic Archipelago (latitude  $>60^\circ$ , Figure 6d–f). Generally, we found positive relationships between diversity and latitude in core/grab sampling; however, statistical significance was much weaker than the hump-shaped diversity–depth relationships. Species diversity and latitude in the core/grab data were positively related only when considering all environmental variables (Tables 3a and 4a). The relatively weak latitudinal signal might reflect the relatively narrow latitudinal gradient in our database and the southward extension of the Arctic realm along the northwest Atlantic side (i.e. Ecoregion 10, Figure 1) associated with the strong influence of the Labrador Current (Archambault et al., 2010; Spalding et al., 2007). Nevertheless, evidence from sample-based and individual-based analyses suggests that we previously underestimated Canadian Arctic benthic diversity, because low sampling intensity may have biased the compilation of previous taxonomic lists (Archambault et al., 2010). The Arctic covers the greatest total area and the largest number of ecoregions among Canada's three oceans, encompassing high complexity in habitat type and physical oceanography (Archambault et al., 2010; Cusson et al., 2007). These characteristics are consistent with our assertion that, of Canada's three oceans, the Arctic harbours significantly greater benthic diversity. Nevertheless, we acknowledge such patterns may not apply to all taxa (e.g. cold-water corals, sponges) and can be affected by different delineations of Arctic marine bioregions.

## 4.2 | Bathymetric variation

Despite widespread recognition of a hump-shaped diversity–depth relationship in deep-sea communities (Levin et al., 2001; McClain & Schlacher, 2015; Rex & Etter, 2010), amplitudes and depths of peak diversity vary among oceanic basins depending on the productivity of the overlying water (Rex & Etter, 2010). In the productive North Atlantic, benthic diversities peaked between 2,000 and 3,000 m; in contrast, the diversity maximum in the oligotrophic Gulf of Mexico and the Mediterranean Sea appears shallower at around 1,000 to 2,000 m (Rex & Etter, 2010; Wei & Rowe, 2019). However, whether the diversity of Canadian slope communities exceeds that for shelf communities remains debatable, because few studies encompassed deep-sea and shelf or intertidal depths within a single sampling campaign. Gray and Elliott (2009) suggested a similar species accumulation rate on the continental shelf of Norway to those at mid-bathyal depths off the eastern United States. In a Europe-wide analysis, Renaud et al. (2009) reported peak benthic diversity near the shelf

break, declining on the upper slope. Our results suggest a similar pattern: peak diversity near the continental shelf break and a decline at greater depth. Bathymetric variation had stronger effect on the diversity of rare species (lower relative abundance) than on that of common and dominant species. However, our analysis lacked deep-water data and thus largely truncated the unimodal diversity–depth relationship above bathyal depths. The Canadian continental slope extends to more than 5,000 m depth, but the current database extends only to 1,100 m. Especially, the majority of the quantitative data were concentrated in the Puget Trough/Georgia Basin and Beaufort Sea and only the data from the Beaufort Sea and Northern Labrador cover a wide bathymetric range (Figure S5). We, therefore, set the ecoregions as a random factor in our modelling to account for regional variations and examine the average effect; however, it is still possible that our observed bathymetric diversity patterns are influenced by the ecoregions with higher data coverage. Availability of more deep-water data ( $>1,000$  m) in more ecoregions might well shift the shape and depth of peak diversity into deeper water. The vast unknown diversity in the deep-sea (Appeltans et al., 2012; Grassle & Maciolek, 1992; Mora, Tittensor, Adl, Simpson, & Worm, 2011) will also likely raise the amplitude of the diversity peak. Moreover, the shallower maximum depths of the Canadian Arctic relative to the Atlantic and Pacific likely affect the shape of the diversity–depth relationship through the boundary (or mid-domain) effect (Pineda & Caswell, 1998). Besides the global effect of bathymetry, benthic biodiversity prediction will be enhanced by regionalization of models.

## 4.3 | Diversity–energy relationship

Export POC flux, a proxy for food supply to the seafloor, appeared to be the dominant environmental factor controlling all species diversity measures in the core/grab data (Tables 3a and 4a) and the inverse Simpson index of the trawl/sledge/dredge data (Tables 3b and 4b), albeit without improving diversity predictions. This variable must be interpreted with caution given the challenges of inferring POC flux in nearshore waters (Behrenfeld & Falkowski, 1997; Lutz et al., 2007), ice-covered regions (Arrigo et al., 2012) and locations with high terrestrial POC inputs (e.g. Pacific west coast and Arctic shelf) (Arrigo, Matrai, & Dijken, 2011). In addition, Lutz's POC flux and bottom temperature represent a long-term ocean condition not synced with the specific timing of faunal data collection at various seasons and years. We, therefore, offer our interpretation below as a hypothesis for future testing rather than as a definitive conclusion. In contrast, the influence of temperature and seasonality of primary production were only evident for core/grab data, with reduced relative importance compared to export POC flux. The higher relative importance of chemical (i.e. food supply) versus thermal energy (i.e. temperature) on seafloor biodiversity confirms recent studies on seafloor diversity–energy relationships (McClain et al., 2012; Tittensor et al., 2011; Woolley et al., 2016). However, in contrast to these reports of a unimodal POC flux–diversity relationship, we found a negative relationship between food flux and seafloor



biodiversity. The key distinction is that our analysis covers a much shallower depth gradient on the continental shelf and upper slope, and thus likely reflects the negative portion of the unimodal relationship (McClain & Schlacher, 2015). The POC flux algorithm also removed intertidal and subtidal data from our analysis (see Methods). Several hypotheses could explain the negative relationship between food flux and diversity, including competitive exclusion under high food supply (Huston, 1979; Rex & Etter, 2010), increasing mega-faunal bioturbation (associated with increasing productivity) and suppressing infaunal species diversity (McClain & Barry, 2010), or high productivity leading to limitations in other resources such as oxygen or biogenic habitat (Tilman, 1982). Moreover, the negative relationship between seasonality of surface production and species richness in the core/grab data suggests that disturbance (induced by instability of food supply) may exert some role on diversity (McClain & Schlacher, 2015; Rex et al., 1993); however, inconsistency of the effect across different measures of the Hill numbers does not support a clear and prominent role. As with many macro-ecological analyses on seafloor ecosystems, we found little support for a temperature–diversity relationship in model averaging (McClain et al., 2012; Tittensor et al., 2011). The decadal average seafloor temperature across our database varied between  $-1$  and  $8^{\circ}\text{C}$ , a range much narrower than export POC flux variations; thus, the effect of food supply on species diversity may have overwhelmed the effect of thermal energy (Yasuhara & Danovaro, 2016). Though weak, we nonetheless observed a positive temperature effect on two of the three best models but only based on the exponential Shannon, a finding consistent with the general positive temperature–diversity relationship at the lower thermal range in the deep sea (Yasuhara & Danovaro, 2016).

#### 4.4 | Conservation implications

By piecing together quantitative benthic diversity datasets collected between 1953 and 2012 across Canada's three oceans for the first time (no abundance information available in Archambault et al., 2010; Piepenburg et al., 2011), we identified new marine biodiversity hotspots in the Canadian Arctic, and clarified potential controlling mechanisms of biodiversity patterns. These results have important conservation implications for MPA designs that prioritize “hotspots of biodiversity” (Myers et al., 2000). Accelerating rates of melting summer sea ice associated with global warming and resulting environmental changes (Comiso, Parkinson, Gersten, & Stock, 2008; Stroeve, Holland, Meier, Scambos, & Serreze, 2007) accentuate the Canadian Arctic Archipelago as a priority conservation area. Moreover, the creation of such a database also identifies key knowledge gaps, and significant challenges for building evidence-based assessments for conservation planning and ongoing monitoring of protected areas, for example, in continental slope and Arctic intertidal environments. The lack of quantitative epifaunal data anywhere in the Arctic except for sparse data in a few of its ecoregions points to a need for better coverage. State-of-the-art statistical approaches

can overcome uneven sampling and extrapolate diversity patterns to under-sampled regions; however, future research activities must fill these knowledge gaps in order to improve the accuracy and resolution of biodiversity pattern predictions. Having in mind the very large areas, the forecasted environmental changes across a vast array of latitudes (about 37 degrees of latitude differences in the presented data), providing new comparative biodiversity values from the Canadian seafloor with a mechanistic approach using chemical and thermal energy data, are valuable for the prediction of future diversity distribution. In that regard, our study marks the first steps in constructing the most comprehensive, quantitative seafloor biodiversity database in Canada to date and demonstrates its potential for benthic biodiversity predictions and substantial information for conservation management. More thorough assessment and understanding of Canada's three oceans of seafloor biodiversity will require continued efforts to acquire and synthesize existing or new benthic diversity datasets, including attention to develop integrated, and nationally consistent benthic survey approaches. Given the extent of Canada's territorial waters and potential extent of the national set of conservation networks, development and implementation of a coherent set of benthic monitoring approaches will require involvement from DFO (the principal regulatory authority), as well as from various stakeholders, including other federal departments, provincial/municipal government agencies, Indigenous groups, academia and community groups.

#### ACKNOWLEDGEMENTS

This study was supported by the Natural Sciences and Engineering Research Council of Canada (NSERC) Canadian Healthy Oceans Network. Additional support was provided by the Ministry of Science and Technology of Taiwan (MOST 108-2611-M-002-001) to CLW and NSERC Discovery Grants to MC and PS. Data sources were numerous and many organizations contributed information (see Table S1). We thank Kevin Conley, Mylène Bourque, Julie Lemieux, Mélanie Lévesque, Adeline Piot and Annie Séguin for contributing datasets (see Table S1). We thank the two anonymous referees for fruitful comments.

#### CITATIONS TO DATA SOURCES

- Arribas, L. P., Donnarumma, L., Palomo, M. G., & Scrosati, R. A. (2014). Intertidal mussels as ecosystem engineers: Their associated invertebrate biodiversity under contrasting wave exposures. *Marine Biodiversity*, 44(2), 203–211. [10.1007/s12526-014-0201-z](https://doi.org/10.1007/s12526-014-0201-z)
- Belley, R., Archambault, P., Sundby, B., Gilbert, F., & Gagnon, J.-M. (2010). Effects of hypoxia on benthic macrofauna and bioturbation in the Estuary and Gulf of St. Lawrence, Canada. *Continental Shelf Research*, 30, 1302–1313. [10.1016/j.csr.2010.04.010](https://doi.org/10.1016/j.csr.2010.04.010)
- Bourque, M. (2008). Influence de l'hypoxie sur la biodiversité benthique du chenal Laurentien. M.Sc. Thesis. Rimouski, Canada: Université du Québec à Rimouski.
- Burd, B. J., McGreer, E., Taekema, B., & Macdonald, T. A. (2009). Utility of large regional database for understanding abundance and diversity characteristics of natural marine soft substrate fauna.

Canadian Technical Report of Fisheries and Aquatic Sciences, 2859.

Cusson, M., Archambault, P., & Aitken, A. (2007). Biodiversity of benthic assemblages on the Arctic continental shelf: Historical data from Canada. *Marine Ecology Progress Series*, 331, 291–304. 10.3354/meps331291

Gilkinson, K. (2013). Recent DFO (Newfoundland & Labrador Region) studies of the Grand Banks benthos at small and large spatial scales. Fisheries and Oceans Canada. Canadian Science Advisory Secretariat Research Document. 114, 30.

Gilkinson, K. D., Gordon, D. C., MacIsaac, K. G., McKeown, D. L., Kenchington, E. L. R., Bourbonnais, C., & Vass, W. P. (2005). Immediate impacts and recovery trajectories of macrofaunal communities following hydraulic clam dredging on Banquereau, eastern Canada. *ICES Journal of Marine Science*, 62, 925–947. 10.1016/j.icesjms.2005.03.009

Heaven, C. S., & Scrosati, R. A. (2008). Benthic community composition across gradients of intertidal elevation, wave exposure, and ice scour in Atlantic Canada. *Marine Ecology Progress Series*, 369, 13–23. 10.3354/meps07655

Kenchington, E. L. R., Gilkinson, K. D., MacIsaac, K. G., Bourbonnais-Boyce, C., Kenchington, T. J., Smith, S. J., & Gordon, D. C. Jr (2006). Effects of experimental otter trawling on benthic assemblages on Western Bank, northwest Atlantic Ocean. *Journal of Sea Research*, 56, 249–270. 10.1016/j.seares.2006.03.010

Kenchington, E. L., Prena, J., Gilkinson, K. D., Gordon, D. C. Jr, MacIsaac, K., Bourbonnais, C., ... Vass, W. P. (2001). Effects of experimental otter trawling on the macrofauna of a sandy bottom ecosystem on the Grand Banks of Newfoundland. *Canadian Journal of Fisheries and Aquatic Sciences*, 58, 1043–1057. 10.1139/f01-053

Lemieux, J. (2015). Analyse du rôle des composantes de la diversité sur le fonctionnement des écosystèmes marins benthiques intertidaux. Ph.D. Thesis. Saguenay, Canada: Université du Québec à Chicoutimi.

Link, H., Piepenburg, D., & Archambault, P. (2013). Are hotspots always hotspots? The relationship between diversity, resource and ecosystem functions in the Arctic. *PLoS ONE*, 8, e74077. 10.1371/journal.pone.0074077

Macdonald, T. A., Burd, B. J., & van Roodselaar, A. (2012a). Facultative feeding and consistency of trophic structure in marine soft-bottom macrobenthic communities. *Marine Ecology Progress Series*, 445, 129–140. 10.3354/meps09478

Macdonald, T. A., Burd, B. J., & van Roodselaar, A. (2012b). Size structure of marine soft-bottom macrobenthic communities across natural habitat gradients: Implications for productivity and ecosystem function. *PLoS ONE*, 7, e40071. 10.1371/journal.pone.0040071

Moritz, C., Lévesque, M., Gravel, D., Vaz, S., Archambault, D., & Archambault, P. (2013). Modelling spatial distribution of epibenthic communities in the Gulf of St. Lawrence (Canada). *Journal of Sea Research*, 78, 75–84. 10.1016/j.seares.2012.10.009

Nephtin, J., Juniper, S. K., & Archambault, P. (2014). Diversity, abundance and community structure of benthic macro- and

megafauna on the Beaufort shelf and slope. *PLoS ONE*, 9, e101556. 10.1371/journal.pone.0101556

Piot, A. (2012). Impacts des changements de biodiversité sur le fonctionnement de l'écosystème benthique en zone intertidale. Ph.D. Thesis. Rimouski, Canada: Université du Québec à Rimouski.

Ramey, P. A., & Snelgrove, P. V. R. (2003). Spatial patterns in sedimentary macrofaunal communities on the south coast of Newfoundland in relation to surface oceanography and sediment characteristics. *Marine Ecology Progress Series*, 262, 215–227. 10.3354/meps262215

Scrosati, R., & Heaven, C. (2007). Spatial trends in community richness, diversity, and evenness across rocky intertidal environmental stress gradients in eastern Canada. *Marine Ecology Progress Series*, 342, 1–14. 10.3354/meps342001

Séguin, A. (2014). Rôle du régime de perturbations sur la biodiversité et le fonctionnement des écosystèmes marins. Ph.D. Thesis. Rimouski, Canada: Université du Québec à Rimouski.

Spalding, M. D., Fox, H. E., Allen, G. R., Davidson, N., Ferdaña, Z. A., Finlayson, M., ... Robertson, J. (2007). Marine ecoregions of the world: A bioregionalization of coastal and shelf areas. *BioScience*, 57, 573–583. 10.1641/B570707

Watt, C. A., & Scrosati, R. A. (2013). Regional consistency of intertidal elevation as a mediator of seaweed canopy effects on benthic species richness, diversity, and composition. *Marine Ecology Progress Series*, 491, 91–99. 10.3354/meps10521

Watt, C. A., & Scrosati, R. A. (2014). Experimental and mensurative data on the abundance of primary producers and consumers from intertidal habitats in Canada. *Ecology*, 95, 1429–1429. 10.1890/14-0071.1

## ORCID

Chih-Lin Wei  <https://orcid.org/0000-0001-9430-0060>


Mathieu Cusson  <https://orcid.org/0000-0002-2111-4803>

Philippe Archambault  <https://orcid.org/0000-0001-5986-6149>

Renald Belley  <https://orcid.org/0000-0002-1227-0177>

Ellen Kenchington  <https://orcid.org/0000-0003-3784-4533>

Heike Link  <https://orcid.org/0000-0002-8484-845X>

Patricia A. Ramey-Balci  <https://orcid.org/0000-0002-5224-8863>

<https://orcid.org/0000-0002-5224-8863>

Ricardo A. Scrosati  <https://orcid.org/0000-0002-3050-132X>

Paul V. R. Snelgrove  <https://orcid.org/0000-0002-6725-0472>

## DATA AVAILABILITY STATEMENT

The data that support the findings of this study are available from the corresponding author upon reasonable request.

## REFERENCES

- Aichi Biodiversity Targets. (2010). Targets 11: Protected areas increased and improved. <https://www.cbd.int/sp/targets/rationale/target-11/>
- Appeltans, W., Ah Yong, S. T., Anderson, G., Angel, M. V., Artois, T., Bailly, N., ... Costello, M. J. (2012). The magnitude of global marine species diversity. *Current Biology*, 22(23), 2189–2202. <https://doi.org/10.1016/j.cub.2012.09.036>

- Archambault, P., Snelgrove, P. V. R., Fisher, J. A. D., Gagnon, J.-M., Garbary, D. J., Harvey, M., ... Poulin, M. (2010). From sea to sea: Canada's three oceans of biodiversity. *PLoS ONE*, *5*, e12182. <https://doi.org/10.1371/journal.pone.0012182>
- Arrigo, K. R., Matrai, P. A., & van Dijken, G. L. (2011). Primary productivity in the Arctic Ocean: Impacts of complex optical properties and subsurface chlorophyll maxima on large-scale estimates. *Journal of Geophysical Research*, *116*(C11). <https://doi.org/10.1029/2011JC007273>
- Arrigo, K. R., Perovich, D. K., Pickart, R. S., Brown, Z. W., van Dijken, G. L., Lowry, K. E., ... Swift, J. H. (2012). Massive phytoplankton blooms under Arctic sea ice. *Science*, *336*, 1408–1408. <https://doi.org/10.1126/science.1215065>
- Behrenfeld, M. J., & Falkowski, P. G. (1997). Photosynthetic rates derived from satellite-based chlorophyll concentration. *Limnology and Oceanography*, *42*, 1–20. <https://doi.org/10.4319/lo.1997.42.1.0001>
- Bilyard, G. R. (1987). The value of benthic infauna in marine pollution monitoring studies. *Marine Pollution Bulletin*, *18*, 581–585. [https://doi.org/10.1016/0025-326X\(87\)90277-3](https://doi.org/10.1016/0025-326X(87)90277-3)
- Borja, A., & Dauer, D. M. (2008). Assessing the environmental quality status in estuarine and coastal systems: Comparing methodologies and indices. *Ecological Indicators*, *8*, 331–337. <https://doi.org/10.1016/j.ecolind.2007.05.004>
- Borja, A., Franco, J., & Pérez, V. (2000). A marine biotic index to establish the ecological quality of soft-bottom benthos within European estuarine and coastal environments. *Marine Pollution Bulletin*, *40*, 1100–1114. [https://doi.org/10.1016/S0025-326X\(00\)00061-8](https://doi.org/10.1016/S0025-326X(00)00061-8)
- Burnham, K. P., & Anderson, D. R. (2002). *Model selection and multimodel inference: A practical information-theoretic approach*, 2nd ed. New York, NY: Springer-Verlag.
- Carney, R. S. (2005). Zonation of deep-sea biota on continental margins. *Oceanography and Marine Biology: an Annual Review*, *43*, 211–279.
- Chao, A., Gotelli, N. J., Hsieh, T. C., Sander, E. L., Ma, K. H., Colwell, R. K., & Ellison, A. M. (2013). Rarefaction and extrapolation with Hill numbers: A framework for sampling and estimation in species diversity studies. *Ecological Monographs*, *84*, 45–67. <https://doi.org/10.1890/13-0133.1>
- Chao, A., & Jost, L. (2010) *Diversity analysis*. Boca Raton, FL; London, UK: CRC; Chapman & Hall.
- Cheung, W., Lam, V., Sarmiento, J. L., Kearney, K., Watson, R., & Pauly, D. (2009). Projecting global marine biodiversity impacts under climate change scenarios. *Fish and Fisheries*, *10*, 235–251. <https://doi.org/10.1111/j.1467-2979.2008.00315.x>
- Comiso, J. C., Parkinson, C. L., Gersten, R., & Stock, L. (2008). Accelerated decline in the Arctic sea ice cover. *Geophysical Research Letters*, *35*, L01703. <https://doi.org/10.1029/2007GL031972>
- Costello, C., Ovando, D., Clavelle, T., Strauss, C. K., Hilborn, R., Melnychuk, M. C., ... Leland, A. (2016). Global fishery prospects under contrasting management regimes. *Proceedings of the National Academy of Sciences USA*, *113*, 5125–5129. <https://doi.org/10.1073/pnas.1520420113>
- Costello, M. J., & Chaudhary, C. (2017). Marine biodiversity, biogeography, deep-sea gradients, and conservation. *Current Biology*, *27*, R511–R527.
- Cusson, M., Archambault, P., & Aitken, A. (2007). Biodiversity of benthic assemblages on the Arctic continental shelf: Historical data from Canada. *Marine Ecology Progress Series*, *331*, 291–304. <https://doi.org/10.3354/meps331291>
- DFO (2008). The role of the Canadian Government in the Oceans Sector. DFO 2008–1515. <https://waves-vagues.dfo-mpo.gc.ca/Library/337909.pdf>
- DFO. (2010). 2010 Canadian Marine Ecosystem Status and Trends Report. Canadian Science Advisory Secretariat Science Advisory 2010/030(Revised) 1–38. <https://waves-vagues.dfo-mpo.gc.ca/Library/341126.pdf>
- DFO (2019) Canada's marine protected and conserved areas. <http://www.dfo-mpo.gc.ca/oceans/conservation/areas-zones/index-eng.html>
- Diaz, R. J., & Rosenberg, R. (2008). Spreading dead zones and consequences for marine ecosystems. *Science*, *321*, 926–929. <https://doi.org/10.1126/science.1156401>
- Gage, J. D., Lamshead, P. J. D., Bishop, J. D. D., Stuart, C. T., & Jones, N. S. (2004). Large-scale biodiversity pattern of Cumacea (Peracarida: Crustacea) in the deep Atlantic. *Marine Ecology Progress Series*, *277*, 181–196. <https://doi.org/10.3354/meps277181>
- Gies, E. (2019). Canada has new rules governing its marine protected areas. Do they go far enough? Hakai Magazine. <https://www.hakai.com/news/canada-has-new-rules-governing-its-marine-protected-areas-do-they-go-far-enough/>
- Goldsmith, J., Howland, K. L., & Archambault, P. (2014). Establishing a baseline for early detection of non-indigenous species in ports of the Canadian Arctic. *Aquatic Invasions*, *9*, 327–342. <https://doi.org/10.3391/ai.2014.9.3.08>
- Grassle, J. F., & Maciolek, N. J. (1992). Deep-sea species richness: Regional and local diversity estimates from quantitative bottom samples. *The American Naturalist*, *139*, 313–341. <https://doi.org/10.1086/285329>
- Gray, J. S., & Elliott, M. M. (2009). *Ecology of marine sediments: From science to management*. Oxford, UK; Toronto, Canada: Oxford University Press.
- Halpern, B. S., Walbridge, S., Selkoe, K. A., Kappel, C. V., Micheli, F., D'Agrosa, C., ... Watson, R. (2008). A global map of human impact on marine ecosystems. *Science*, *319*, 948–952. <https://doi.org/10.1126/science.1149345>
- Hill, M. O. (1973). Diversity and evenness: A unifying notation and its consequences. *Ecology*, *54*, 427–432. <https://doi.org/10.2307/1934352>
- Hillebrand, H. (2004). On the generality of the latitudinal diversity gradient. *The American Naturalist*, *163*, 192–211. <https://doi.org/10.1086/381004>
- Huston, M. (1979). A general hypothesis of species diversity. *The American Naturalist*, *113*, 81–101. <https://doi.org/10.1086/283366>
- Jablonski, D., Belanger, C. L., Berke, S. K., Huang, S., Krug, A. Z., Roy, K., ... Valentine, J. W. (2013). Out of the tropics, but how? Fossils, bridge species, and thermal ranges in the dynamics of the marine latitudinal diversity gradient. *Proceedings of the National Academy of Sciences USA*, *110*, 10487–10494. <https://doi.org/10.1073/pnas.1308997110>
- Jablonski, D., Roy, K., & Valentine, J. W. (2006). Out of the tropics: Evolutionary dynamics of the latitudinal diversity gradient. *Science*, *314*, 102–106. <https://doi.org/10.1126/science.1130880>
- Levin, L. A., Etter, R. J., Rex, M. A., Gooday, A. J., Smith, C. R., Pineda, J., ... Pawson, D. (2001). Environmental influences on regional deep-sea species diversity. *Annual Review of Ecology and Systematics*, *32*, 51–93. <https://doi.org/10.1146/annurev.ecolsys.32.081501.114002>
- Lutz, M. J., Caldeira, K., Dunbar, R. B., & Behrenfeld, M. J. (2007). Seasonal rhythms of net primary production and particulate organic carbon flux to depth describe the efficiency of biological pump in the global ocean. *Journal of Geophysical Research: Oceans*, *112*, C10011. <https://doi.org/10.1029/2006JC003706>
- Magurran, A. E. (2004). *Measuring biological diversity*. Malden, MA: Blackwell Science Ltd.
- McClain, C. R., Allen, A. P., Tittensor, D. P., & Rex, M. A. (2012). Energetics of life on the deep seafloor. *Proceedings of the National Academy of Sciences USA*, *109*, 15366–15371. <https://doi.org/10.1073/pnas.1208976109>
- McClain, C. R., & Barry, J. P. (2010). Habitat heterogeneity, disturbance, and productivity work in concert to regulate biodiversity in deep submarine canyons. *Ecology*, *91*, 964–976. <https://doi.org/10.1890/09-0087.1>
- McClain, C. R., & Schlacher, T. A. (2015). On some hypotheses of diversity of animal life at great depths on the sea floor. *Marine Ecology*, *36*, 849–872. <https://doi.org/10.1111/maec.12288>
- Molnar, J. L., Gamboa, R. L., Revenga, C., & Spalding, M. D. (2008). Assessing the global threat of invasive species to marine biodiversity. *Frontiers in Ecology and the Environment*, *6*, 485–492. <https://doi.org/10.1890/070064>

- Mora, C., Tittensor, D. P., Adl, S., Simpson, A. G. B., & Worm, B. (2011). How many species are there on earth and in the ocean? *PLoS Biology*, 9(8), e1001127. <https://doi.org/10.1371/journal.pbio.1001127>
- Morel, A., & Berthon, J. F. (1989). Surface pigments, algal biomass profiles, and potential production of the euphotic layer: Relationships reinvestigated in view of remote-sensing applications. *Limnology and Oceanography*, 34, 1545–1562. <http://dx.doi.org/10.4319/lo.1989.34.8.1545>
- Murillo, F. J., Kenchington, E., Tompkins, G., Beazley, L., Baker, E., Knudby, A., & Walkusz, W. (2018). Sponge assemblages and predicted archetypes in the eastern Canadian Arctic. *Marine Ecology Progress Series*, 597, 115–135. <https://doi.org/10.3354/meps12589>
- Myers, N., Mittermeier, R. A., Mittermeier, C. G., da Fonseca, G. A. B., & Kent, J. (2000). Biodiversity hotspots for conservation priorities. *Nature*, 403, 853–858. <https://doi.org/10.1038/35002501>
- Ocean Act. (1996). An Act respecting the oceans of Canada. <http://laws-lois.justice.gc.ca/eng/acts/O-2.4/FullText.html>
- Pearson, T. H., & Rosenberg, R. (1978). Macrobenthic succession in relation to organic enrichment and pollution of the marine environment. *Oceanography and Marine Biology: an Annual Review*, 16, 229–311.
- Piepenburg, D., Archambault, P., Ambrose, W. G., Blanchard, A. L., Bluhm, B. A., Carroll, M. L., ... Włodarska-Kowalczyk, M. (2011). Towards a pan-Arctic inventory of the species diversity of the macro- and megabenthic fauna of the Arctic shelf seas. *Marine Biodiversity*, 41(1), 51–70. <https://doi.org/10.1007/s12526-010-0059-7>
- Pineda, J., & Caswell, H. (1998). Bathymetric species-diversity patterns and boundary constraints on vertical range distributions. *Deep Sea Research Part II: Topical Studies in Oceanography*, 45, 83–101. [https://doi.org/10.1016/S0967-0645\(97\)00090-8](https://doi.org/10.1016/S0967-0645(97)00090-8)
- Renaud, P. E., Webb, T. J., Bjørgesæter, A., Karakassis, I., Kedra, M., Kendall, M. A., ... Zettler, M. L. (2009). Continental-scale patterns in benthic invertebrate diversity: Insights from the MacroBen database. *Marine Ecology Progress Series*, 382, 239–252. <https://doi.org/10.3354/meps07963>
- Rex, M. A., & Etter, R. J. (2010). *Deep-sea biodiversity: Pattern and scale*. Cambridge, MA: Harvard University Press.
- Rex, M. A., Stuart, C. T., Hessler, R. R., Allen, J. A., Sanders, H. L., & Wilson, G. D. F. (1993). Global-scale latitudinal patterns of species diversity in the deep-sea benthos. *Nature*, 365, 636–639. <https://doi.org/10.1038/365636a0>
- Rignot, E., Velicogna, I., van den Broeke, M. R., Monaghan, A., & Lenaerts, J. T. M. (2011). Acceleration of the contribution of the Greenland and Antarctic ice sheets to sea level rise. *Geophysical Research Letters*, 38, L05503. <https://doi.org/10.1029/2011GL046583>
- Rivadeneira, M. M., Thiel, M., González, E. R., & Haye, P. A. (2011). An inverse latitudinal gradient of diversity of peracarid crustaceans along the Pacific Coast of South America: Out of the deep south. *Global Ecology and Biogeography*, 20, 437–448. <https://doi.org/10.1111/j.1466-8238.2010.00610.x>
- Roy, K., Jablonski, D., Valentine, J. W., & Rosenberg, G. (1998). Marine latitudinal diversity gradients: Tests of causal hypotheses. *Proceedings of the National Academy of Sciences*, 95, 3699–3702. <https://doi.org/10.1073/pnas.95.7.3699>
- Smith, C. R., De Leo, F. C., Bernardino, A. F., Sweetman, A. K., & Arbizu, P. M. (2008). Abyssal food limitation, ecosystem structure and climate change. *Trends in Ecology & Evolution*, 23, 518–528. <https://doi.org/10.1016/j.tree.2008.05.002>
- Spalding, M. D., Fox, H. E., Allen, G. R., Davidson, N., Ferdaña, Z. A., Finlayson, M., ... Robertson, J. (2007). Marine ecoregions of the world: A bioregionalization of coastal and shelf areas. *BioScience*, 57, 573–583. <https://doi.org/10.1641/B570707>
- Stroeve, J., Holland, M. M., Meier, W., Scambos, T., & Serreze, M. (2007). Arctic sea ice decline: Faster than forecast. *Geophysical Research Letters*, 34, L09501. <https://doi.org/10.1029/2007GL029703>
- Tilman, D. (1982). *Resource competition and community structure*. Princeton, NJ: Princeton University Press.
- Tittensor, D. P., Mora, C., Jetz, W., Lotze, H. K., Ricard, D., Berghe, E. V., & Worm, B. (2010). Global patterns and predictors of marine biodiversity across taxa. *Nature*, 466, 1098–1101. <https://doi.org/10.1038/nature09329>
- Tittensor, D. P., Rex, M. A., Stuart, C. T., McClain, C. R., & Smith, C. R. (2011). Species–energy relationships in deep-sea molluscs. *Biology Letters*, 7, 718–722. <https://doi.org/10.1098/rsbl.2010.1174>
- Van Hoey, G., Borja, A., Birchenough, S., Buhl-Mortensen, L., Degraer, S., Fleischer, D., ... Zettler, M. L. (2010). The use of benthic indicators in Europe: From the water framework directive to the marine strategy framework directive. *Marine Pollution Bulletin*, 60, 2187–2196. <https://doi.org/10.1016/j.marpolbul.2010.09.015>
- Wei, C.-L., & Rowe, G. T. (2019). Productivity controls macrofauna diversity in the deep northern Gulf of Mexico. *Deep Sea Research Part I: Oceanographic Research Papers*, 143, 17–27. <https://doi.org/10.1016/j.dsr.2018.12.005>
- Wei, C.-L., Rowe, G. T., Hubbard, G. F., Scheltema, A. H., Wilson, G. D. F., Petrescu, I., ... Wang, Y. (2010). Bathymetric zonation of deep-sea macrofauna in relation to export of surface phytoplankton production. *Marine Ecology Progress Series*, 399, 1–14. <https://doi.org/10.3354/meps08388>
- Witman, J. D., Cusson, M., Archambault, P., Pershing, A. J., & Mieszkowska, N. (2008). The relation between productivity and species diversity in temperate–arctic marine ecosystems. *Ecology*, 89, S66–S80. <https://doi.org/10.1890/07-1201.1>
- Woolley, S. N. C., Tittensor, D. P., Dunstan, P. K., Guillera-Aroita, G., Lahoz-Monfort, J. J., Wintle, B. A., ... O'Hara, T. D. (2016). Deep-sea diversity patterns are shaped by energy availability. *Nature*, 533, 393–396. <https://doi.org/10.1038/nature17937>
- Yasuhara, M., & Danovaro, R. (2016). Temperature impacts on deep-sea biodiversity. *Biological Reviews*, 91, 275–287. <https://doi.org/10.1111/brv.12169>

#### BIOSKETCH

**Chih-Lin Wei** is Associate Professor at the Institute of Oceanography, National Taiwan University. He is interested in how environments shape and control the distribution, diversity and ecosystem functioning of seabed communities and how human activities, climate changes or natural disturbance may affect these biological attributes.

Author contributions: MC coordinated the project and data acquisition. CLW lead the analyses, CLW and MC lead the manuscript writing. All authors contributed critically to the drafts and gave final approval for publication.

#### SUPPORTING INFORMATION

Additional supporting information may be found online in the Supporting Information section.

**How to cite this article:** Wei C-L, Cusson M, Archambault P, et al. Seafloor biodiversity of Canada's three oceans: Patterns, hotspots and potential drivers. *Divers Distrib*. 2019;00:1–16. <https://doi.org/10.1111/ddi.13013>