

## Original Article

**Cite this article:** Allison S, Hardy M, Hayward K, Cameron TC, Underwood GJC (2020). Strongholds of *Ostrea edulis* populations in estuaries in Essex, SE England and their association with traditional oyster aquaculture: evidence to support a MPA designation. *Journal of the Marine Biological Association of the United Kingdom* **100**, 27–36. <https://doi.org/10.1017/S0025315419001048>

Received: 26 June 2019

Revised: 15 October 2019

Accepted: 4 November 2019

First published online: 9 December 2019



### Key words:

Conservation objectives; Marine Protected Areas MPAs; native oysters; recruitment; restoration; settlement

### Author for correspondence:

Graham J. C. Underwood,  
E-mail: [gjcu@essex.ac.uk](mailto:gjcu@essex.ac.uk)

# Strongholds of *Ostrea edulis* populations in estuaries in Essex, SE England and their association with traditional oyster aquaculture: evidence to support a MPA designation

Sarah Allison<sup>1,2</sup>, Malcolm Hardy<sup>1</sup>, Kate Hayward<sup>2</sup>, Tom C. Cameron<sup>1</sup>   
and Graham J. C. Underwood<sup>1</sup> 

<sup>1</sup>School of Life Sciences, University of Essex, Colchester, Essex, UK and <sup>2</sup>Essex Wildlife Trust, Abbots Hall Farm, Great Wigborough, Colchester, Essex, UK

## Abstract

The flat oyster *Ostrea edulis* has declined significantly in European waters since the 1850s as a result of anthropogenic activity. *Ostrea edulis* was designated a UK Biodiversity Action Plan Species and Habitat in 1995, and as a Feature of Conservation Importance (FOCI) within the UK Marine & Coastal Access Act 2009. To promote the recovery of oyster beds, a greater understanding of its abundance and distribution is required. Distribution of *O. edulis* across the proposed Blackwater, Crouch, Roach and Colne MCZ in Essex was determined between 2008 and 2012. *Ostrea edulis* were present in four estuary zones; with highest sample abundance in the Blackwater and Ray Sand zones. Size structure of populations varied, with the Ray Sand and Colne zones showing a significant lack of individuals with shell height <39 mm. *Ostrea edulis* occurred in highest number on shell substratum, followed by silty sediments. There were no significant associations between *O. edulis* abundance or size structure with water column Chl *a*, suspended solids, oxygen, nitrate or ammonium concentrations, temperature or pH. Highest abundance and most equitable population shell-size distribution for *O. edulis* were located within, or adjacent to, actively managed aquaculture zones. This suggests that traditional seabed management contributed to the maintenance or recovery of the species of conservation concern. Demonstration that the Essex estuaries were a stronghold for *Ostrea edulis* in the southern North sea area led to the designation of the Blackwater, Crouch, Roach and Colne estuaries Marine Conservation Zone in 2013.

## Introduction

The European native oyster *Ostrea edulis* L. has seen a dramatic decline in abundance and distribution throughout its range (Beck *et al.*, 2009; Fariñas-Franco *et al.*, 2018; Pogoda, 2019). Historically *O. edulis* was found throughout European coastal regions, from the Norwegian Sea, around the British Isles, to northern Spain and the Mediterranean (Pogoda, 2019), with the geographic range influenced by factors such as temperature, water depth, shelter and tidal exchange (Laing & Spencer, 2006). Formerly widespread throughout the European and north African Atlantic seaboard, Mediterranean and Black Seas (Olsen, 1883), *Ostrea edulis* underwent major declines from the mid-1800s due to over-exploitation and the impact of reduced population sizes on recruitment and survival (Thurstan *et al.*, 2013; Fariñas-Franco *et al.*, 2018). *Ostrea edulis* is now only found in a fraction of its former geographic region (Thurstan *et al.*, 2013; Helmer *et al.*, 2019; Pogoda, 2019), and at much-reduced population densities. The long history of harvesting means it is difficult to determine the original extent and abundance of *Ostrea edulis*, with the species now extinct in estuaries and coastal regions where it was once common (Thurstan *et al.*, 2013). Current wild populations in Europe fall into three main geographic clusters with distinct regional genetic structure, separated by oceanic fronts (Vera *et al.*, 2016).

*Ostrea edulis* and *O. edulis* beds are listed by OSPAR as a threatened species or declining habitat (OSPAR, 2009), with their status within UK waters categorized as functionally extinct. The few remaining populations left in the UK can be found in the Essex Estuaries, Solent and River Fal (England), Strangford Lough (Northern Ireland) and Loch Ryan (Scotland), but due to low abundance, fragmentation of breeding populations, habitat loss and extraction for fisheries, these populations are considered vulnerable to loss (Thurstan *et al.*, 2013; Helmer *et al.*, 2019).

Native oyster and native oyster beds have been associated historically with Essex estuaries from the period of the Roman occupation of Britain (Laver, 1916). The value of the Colne estuary population was recognized in a charter of King Richard I in 1189 AD, granting the oyster fishery to the Borough of Colchester. While there is historical evidence for the presence of *O. edulis* within the Essex estuaries, there has not been any wide-scale assessment of populations since 1970 (Barnes & Coughlan, 1971). Stocks of *O. edulis* in the Essex estuaries were significantly reduced by the severe winter weather in 1962–1963 (Crisp, 1964), with conservative estimates of mortality being a 50–75% loss (Smyth *et al.*, 2009), leaving only remnant populations.

© Marine Biological Association of the United Kingdom 2019. This is an Open Access article, distributed under the terms of the Creative Commons Attribution licence (<http://creativecommons.org/licenses/by/4.0/>), which permits unrestricted re-use, distribution, and reproduction in any medium, provided the original work is properly cited.



**Table 1.** Current and recent fishing and aquaculture practices in the five zones of the Blackwater, Crouch, Roach and Colne (BCRC) Marine Conservation Zone

Zone	Name	Status	Date	Activity	Notes
A	<i>Blackwater Creeks</i>	Private grounds	1800	Privately owned seabed	<i>O. edulis</i> relayed in creeks over the summer from 1972 onwards, removed at the end of each summer.
	<i>Blackwater</i>	Several Order	1972	Owned and cultivated by Blackwater Oysterman's Association	<i>O. edulis</i> known to be present since 1876, numbers declined dramatically 1962/3. Harrowing and relaying of cultch on seabed since 1972, oyster spat settlement on cultivated grounds from <i>O. edulis</i> in privately owned creeks.
B	<i>Colne</i>	Tenanted	1952	Leasehold since 1952	<i>O. edulis</i> historically present in Colne. Populations declined significantly in 1962/3 and in 1982 due to the introduction of the parasite <i>Bonamia ostreae</i> . Minimal cultivation began again in 2010, but no active aquaculture interventions.
C	<i>Bench Head</i>	Public ground	–	Open fishing grounds	Historically fished by opportunistic fishing boats, no formal management, translocation or cultivation practices.
D	<i>Ray Sand</i>	Public Ground	–	Historically open fishing grounds	Wild population known to be present since 1980. Historically fished by opportunistic boats, no formal management or cultivation practices.
E	<i>Outer Estuary</i>	Public ground	–	Historically open fishing grounds	<i>O. edulis</i> marked as present in Olsen's (1883) Piscatorial Atlas but local knowledge indicates no <i>O. edulis</i> populations have populated this area since 1914.

Given the lack of any pre-1962–1963 quantitative baseline data on stock density and age profile, it is not possible to determine the level of recovery (or not) since then. Commercial oyster fisheries have existed in the Blackwater, Crouch, Roach and Colne estuaries for many years, but operating under different models of governance (Table 1). The Crouch and Roach native oyster fishery, active in the 1950s, and well-studied during that time (Knight-Jones, 1952; Shellbourne, 1957; Waugh, 1957) is now not active. In the Blackwater estuary, some side creeks have had 'oyster layings' in private ownership since the 1800s, while in 1972 the Blackwater Oysterman's Association (BOA), a limited-membership grouping of particular oyster fishers' family businesses, was granted exclusive fishing rights over the Blackwater oyster grounds in the form of a Several Order (Table 1). Between 1972 and 1997, the BOA translocated large numbers of *O. edulis*, predominantly from the Fal and the Solent in the UK, into the privately owned creeks adjoining the Blackwater Several Order. These *O. edulis* were maintained in the creeks over the summer period to provide an opportunity to spawn, before being removed and sold in the autumn/winter. The BOA have cultivated the oyster grounds by harrowing (a process of dredging sites in summer to disturb and redistribute bottom sediments and *Crepidula fornicata* colonies, and re-expose shell cultch; Bromley et al., 2016), and relaying shell cultch in large quantities within the area of the Several Order. The Colne Estuary oyster fishery owned by Colchester Borough Council is leased to a single tenant, Colchester Oyster Fishery Ltd (COF), who controls both the shellfish and finfish fishery in the Colne Estuary to a position offshore of Colne Point (Table 1, Figure 1). Local oystermen (A. Bird, R. Hayman, BOA; C. Kerrison, G. Larkin, COF) confirm that the fisheries have not recovered to pre-1962 levels, with subsequent challenges including TBT pollution in the 1970s (Rees et al., 1999, 2001), the accidental introduction of the protozoan parasite *Bonamia ostreae* (Laing et al., 2005) and losses of suitable settlement substratum. The Colne estuary fishery (zone A) has seen some minor attempts at restocking and minimal harvesting, and no sustained aquaculture practices since the 1970s. The public grounds (zones B, C and D) have not been subject to any recent management or sustained fishery activity (Table 1).

In 2009, the Marine and Coastal Access Act (Marine Act) was passed in England and Wales. One of the main aims of this legislation was to establish a new type of Marine Protected Area (MPA) called a Marine Conservation Zone (MCZ). MCZs were envisioned to

complement existing MPAs, filling some of the spatial gaps between existing MPAs to create the ecologically coherent network stipulated within the EU Habitats Regulations (European Commission, 2007). Designation of an area as an MCZ required the presence of qualifying species and habitats referred to as Features of Conservation Importance (FOCI) (JNCC, 2010). The status of *O. edulis* as rare or threatened under the OSPAR criteria (OSPAR, 2009) and the designation of *O. edulis* as a UK Biodiversity Action Plan Species and Habitat (UKBAP, 2009) resulted in *O. edulis* and *O. edulis* beds being designated as species and habitat FOCI respectively.

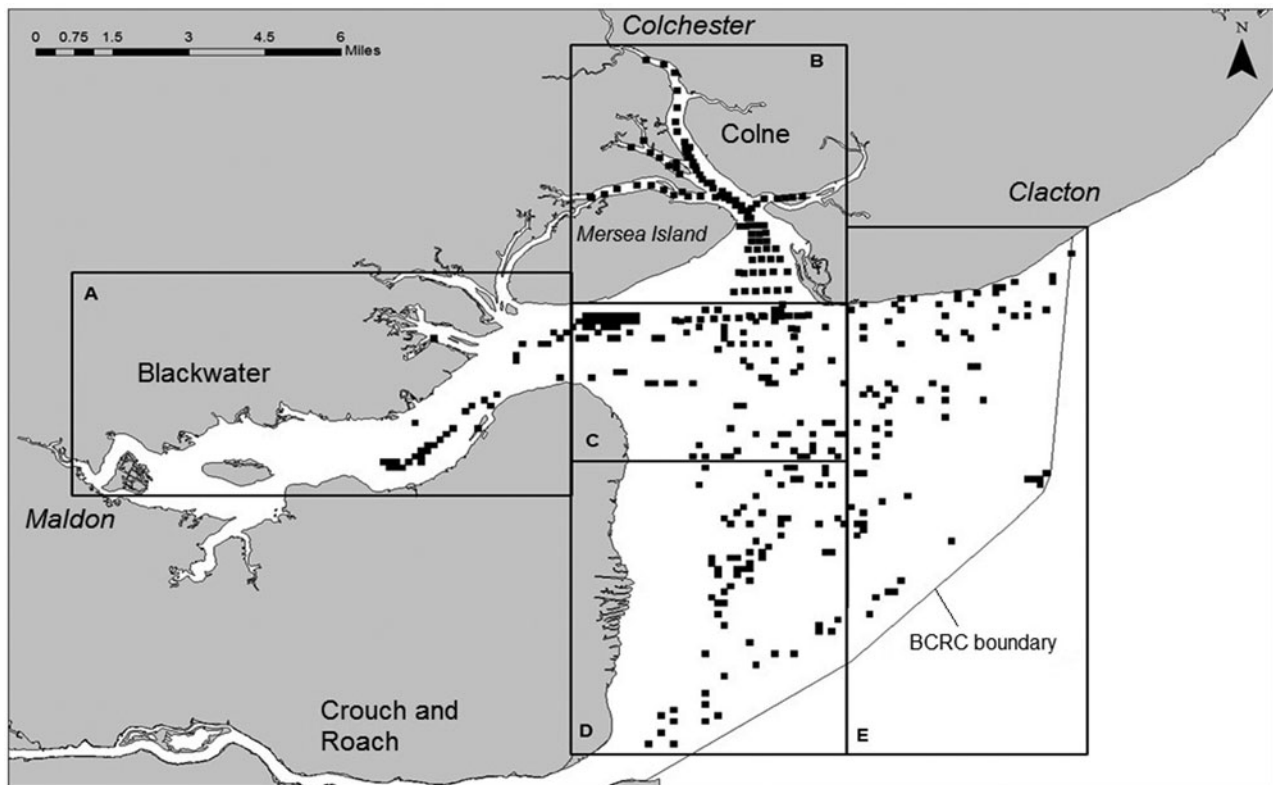
During the MCZ recommendation process the Blackwater, Crouch, Roach and Colne estuaries (BCRC) were proposed as a site for consideration for the protection of *Ostrea edulis* (Balanced Seas, 2012). The Ecological Network Guidance (JNCC, 2010) provided for areas to be considered for designation based on 'local or lay knowledge' but gave a higher weighting to up-to-date, scientifically robust data on presence and distribution of a FOCI. Extensive lay knowledge from local oystermen about distribution of native oysters (A. Bird, R. Hayman, BOA; C. Kerrison, COF), and reports of wild and cultivated populations of *O. edulis* in the Blackwater, Crouch and Roach estuaries and their creeks and tidal inlets (Hawkins et al., 2000; Rees et al., 2001) were not considered sufficient evidence of the presence of viable populations of *O. edulis* throughout the Essex estuary complex to support a decision on MCZ designation. For example, *O. edulis* was not included in species lists for the Colne estuary in a report on the Essex Estuaries Special Protection Area (Chesman et al., 2006), contradicting local lay knowledge.

Therefore the aim of this study was to (i) determine the presence, dredge abundance and distribution of *O. edulis* populations to support the proposed Essex BCRC MCZ application, and to relate the distribution of oysters to environmental abiotic factors; (ii) to determine the size structure of the populations to ensure appropriate conservation objectives for the site were set; and (iii) to set a clear baseline for future management and restoration practices within the BCRC MCZ.

## Materials and methods

### Study area

The Essex Estuaries complex lies on the east coast of Essex, in the south-east of England. The designation covers an area of



**Fig. 1.** Major estuaries of the Blackwater, Crouch, Roach and Colne (BCRC) Marine Conservation Zone (MCZ) in Essex, UK. Symbols indicate benthic dredge sampling locations in this study (Colne Estuary 2008, BCRC 2011–12). Estuary zones, Blackwater (A), Colne (B), Bench Head (C), Ray Sand (D) and Outer estuary (E) indicated.

~282 km<sup>2</sup>. It is made up of four estuaries; the Blackwater, Crouch, Roach and Colne, as well as open stretches of coast along the Dengie Peninsula (Figure 1). The Blackwater Estuary is the largest estuary in this complex, extending to a length of 21.2 km, from its tidal limit at Maldon to the mouth. The dominant upper intertidal habitats along the estuaries are characterized by extensive areas of salt marsh while the lower intertidal area is dominated by extensive intertidal mud and sand flats. The area benefits from international designations including the Essex Estuaries Special Area of Conservation (SAC) (Chesman *et al.*, 2006), the Blackwater Estuary, Colne Estuary, Crouch and Roach Estuary and Dengie Special Protection Area (SPA) (JNCC, 2016) and recently the Blackwater, Crouch, Roach and Colne Marine Conservation Zone (DEFRA, 2013).

The spatial distribution of *O. edulis* throughout the Essex Estuaries was obtained from a survey of the Blackwater and outer Colne estuaries undertaken from 2010 to 2012 (Allison, 2019), and from a survey of the Colne estuary undertaken in 2008 to 2009 (Hardy, 2014).

#### Study design – Blackwater and Outer estuary

Using ESRI ArcMap GIS software (ESRI, Aylesbury, Buckinghamshire, UK) a 200 m × 200 m grid was created and mapped to the proposed MCZ boundary. Using Seazone mapping software (Seazone, Wallingford, Oxfordshire, UK) TruDepth data points were imported into the database and depths of between 0 and ≤4 m below chart datum within the boundary were selected. The MCZ fishnet grid was clipped to incorporate only these depths. Every 200 m grid square within these selection criteria was allocated a value between 1 and 4000 in consecutive order. Numbers were input into a random number generator to identify random locations, with local expert knowledge (A. Bird, R. Hayman, BOA) adding some additional sample points in known areas of

oyster occurrence, resulting in 283 locations uploaded into the survey area geodatabase. This was the basis of the 2011–2012 survey (Figure 1).

#### Survey design – Colne Estuary

The study area located between Wivenhoe (51° 51.000'N) and the estuary mouth at Colne Point (51° 45.648'N), was conceptually divided into discrete sampling areas, comprising four sections of the main estuarine channel and three major tidal creeks; Geedons, Brightlingsea Creek and Pyefleet Channel (Hardy, 2014). A stratified sampling design was adopted in which sampling sites were assigned on the basis of known variations in salinity (euhaline and polyhaline regions), intertidal characteristics, composition of benthic substrata (Nedwell *et al.*, 2016), levels of disturbance through shipping and commercial activity, and positions and historical extent of *O. edulis* beds (C. Kerrison, COF) within each area. In total 118 locations were sampled (Figure 1).

#### *Ostrea edulis* sampling

Survey sites were located using GPS. Each sample location was surveyed using a 1.2 m wide standard oyster ladder dredge fitted with a 45 mm ring size. At each location a 100 m tow (determined by GPS linked sidescan sonar; Humminbird 698ci HD, Humminbird, Eufaula, Alabama) was taken at a speed of <1.5 m s<sup>-1</sup>. The contents of the dredge were discharged onto the sorting table and photographed. All *O. edulis* were removed, counted and shell heights (mm) of each oyster were measured from umbo to outer shell margin using callipers. Assessment of the dominant substratum characteristic in each dredge sample was recorded (noting that fine sediment may be underestimated), using eight broad substratum categories based on the Wentworth classification: (1) Clay, (2) Silt, (3) Fine Mud, (4) Muddy Sand, (5) Sand, (6) Gravel, (7) Shell,



**Table 2.** Water column environmental variables for five zones within the Blackwater, Crouch, Roach and Colne Marine Conservation Zone for 5-year period from January 2008–December 2012, from UK Environment Agency WIMS database. Mean values  $\pm$  standard error, *max* and *min* value, and sample size (N)

Zone	Variable (units)	Temp. (°C)	Salinity (ppt)	Sus. solids (mg l <sup>-1</sup> )	Chl <i>a</i> (µg l <sup>-1</sup> )	pH	Oxygen (mg O <sub>2</sub> l <sup>-1</sup> )	NO <sub>3</sub> <sup>-</sup> (mg N l <sup>-1</sup> )	NH <sub>4</sub> <sup>+</sup> (mg N l <sup>-1</sup> )
A <i>Blackwater</i>		10.5 $\pm$ 0.70	32.1 $\pm$ 0.26	30.5 $\pm$ 5.4	5.2 $\pm$ 1.55	8.09 $\pm$ 0.01	8.99 $\pm$ 0.16	0.61 $\pm$ 0.09	0.05 $\pm$ 0.004
		2.77, 20.94	22.2, 36.3	4.30, 154	0.58, 60.8	7.92, 8.15	6.74, 12.5	0.10, 2.03	0.02, 0.09
		N = 70	N = 82	N = 45	N = 38	N = 46	N = 70	N = 34	n = 27
B <i>Colne</i>		11.7 $\pm$ 0.51	32.7 $\pm$ 0.15	23.6 $\pm$ 3.3	4.0 $\pm$ 0.25	8.06 $\pm$ 0.01	8.72 $\pm$ 0.11	0.46 $\pm$ 0.04	0.07 $\pm$ 0.007
		0.75, 21.94	23.1, 36.3	5.4, 88	0.63, 12.4	7.90, 8.12	5.74, 11.2	0.05, 2.19	0.01, 0.56
		N = 136	N = 138	N = 36	N = 106	N = 28	N = 134	N = 92	n = 86
C <i>Bench Head</i>		12.1 $\pm$ 0.42	33.3 $\pm$ 0.10	51.4 $\pm$ 6.14	4.1 $\pm$ 0.35	8.09 $\pm$ 0.01	8.56 $\pm$ 0.09	0.34 $\pm$ 0.02	0.04 $\pm$ 0.004
		2.14, 22.6	28.4, 36.2	11.3, 106	0.68, 51.1	7.93, 8.14	6.13, 11.3	0.02, 1.37	0.01, 0.35
		N = 177	N = 180	N = 25	N = 161	N = 44	N = 175	N = 121	n = 113
D <i>Ray Sand</i>		8.97 $\pm$ 1.05	32.5 $\pm$ 0.31	35.2 $\pm$ 5.89	No data	8.07 $\pm$ 0.02	9.27 $\pm$ 0.24	No data	No data
		3.09, 20.7	29.5, 34.5	11.2, 54		7.91, 8.26	6.88, 12.0		
		N = 23	N = 24	N = 6		N = 15	N = 23		
E <i>Outer Estuary</i>		11.5 $\pm$ 0.82	33.8 $\pm$ 0.09	No data	5.1 $\pm$ 0.64	8.02 $\pm$ 0.01	No data	0.32 $\pm$ 0.02	0.03 $\pm$ 0.005
		4.45, 20.4	32.4, 34.9		1.84, 16.0	7.84, 8.10		0.07, 0.62	0.003, 0.15
		N = 40	N = 36		N = 26	N = 23		N = 41	n = 35
	Sig. diff.	NS	E > ABD***	C > AB**	NS	AB > E**	NS	AB > C*	AB > CE***

Significant differences between zones indicated, Kruskal–Wallis, \* $P < 0.05$ , \*\* $P < 0.01$ , \*\*\* $P < 0.001$ .

(8) Cobbles. All dredged material was returned to the same grid square. In total 401 locations throughout the Blackwater, Colne, Crouch and Roach MCZ were sampled (Figure 1).

### Data analysis

All survey data were imported into ArcMap 10.2.2, including presence, number and sizes of *O. edulis* within each sample, and substratum type. The survey area was divided into five zones: (A) Blackwater, (B) Colne, (C) Bench Head, (D) Ray Sand, (E) Outer Estuary, based on present and historical management regimes (Table 1). Shell height data were used to group the total numbers of individual oysters sampled in separate 10 mm size classes; 0–9, 10–19, 20–29 mm, etc. for each zone.

Water column environmental variables (temperature (°C), salinity (ppt), suspended solids (mg l<sup>-1</sup>), Chl *a* (µg l<sup>-1</sup>), pH, oxygen (mg O<sub>2</sub> l<sup>-1</sup>), NO<sub>3</sub><sup>-</sup> (mg l<sup>-1</sup> N) and NH<sub>4</sub><sup>+</sup> (mg l<sup>-1</sup> N)) for these five zones were obtained from publicly available data within the UK Environment Agency WIMS database. Mean values  $\pm$  standard error, max and min values for the 5-year period from Jan 2008–December 2012 were calculated (Table 2). Variation in Environment Agency sampling regimes over this period at the different sampling stations resulted in varying data set sample sizes (Table 2).

Statistical analysis of *O. edulis* distribution data used Kruskal–Wallis one way analysis of variance on ranks, comparing zones and substratum groups followed by multiple comparison procedure (Sigmaplot v.12, Systat. Hounslow, London, UK). Principal component analysis of population size structures and estuary zones was conducted using MVSP v3.1 (Kolvec Ltd, N Wales, UK). Significant differences in water column environmental variables between each zone were determined using Kruskal–Wallis, followed by multiple comparison testing using Dunn's method.

## Results

### Distribution and density of *O. edulis* at different sites

Live *O. edulis* were sampled at 101 of the 401 dredge locations, with counts ranging from 1 to 150 individuals per 100 m dredge sample (Figure 2). Oysters had a highly patchy distribution across

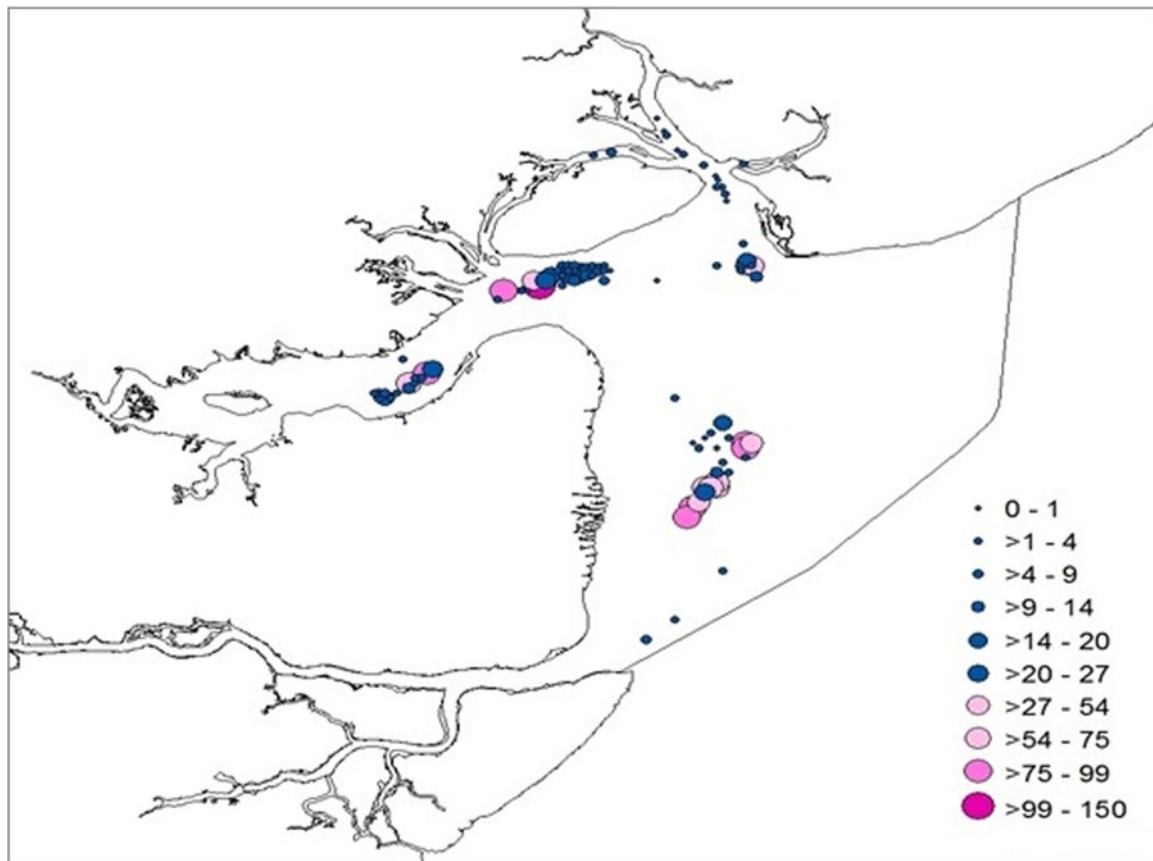
the sampling area, with highest numbers present in five spatially aggregated sub-populations; two located within the Blackwater (zone A), two in the Bench Head zone (zone C), and the fifth in the Ray Sand zone (zone D) (Figure 2). Highest numbers were recorded in the Blackwater and Ray Sand zones (Figures 2 and 3), while no live oysters were sampled in the Outer Estuary (zone E). There was significant spatial variability in sample point abundance of *O. edulis* between zones ( $H = 61.412$ , d.f. = 4,  $P < 0.001$ ). Sample abundance of *O. edulis* was significantly higher in the Blackwater (A) and Ray Sand (D) zones, compared with the Colne (B), Bench Head (C) and the Outer Estuary (E) zones (Figure 3). There were no significant differences in *O. edulis* sample abundance between the Blackwater and the Ray Sand zones, or between the mean sample abundance between the Bench Head and Colne zones (Figure 3).

### Population shell-height frequency distribution of *O. edulis*

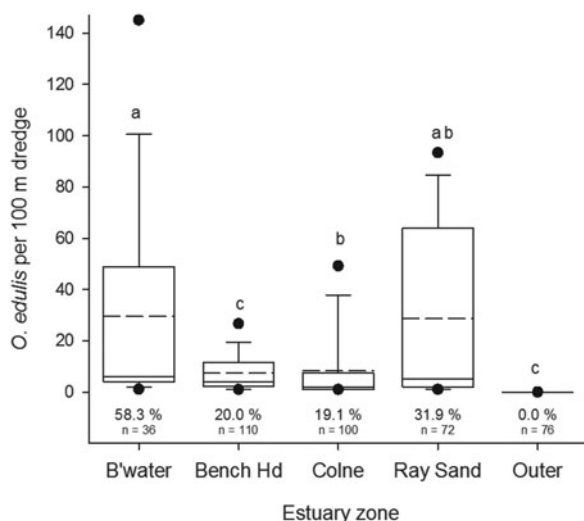
Size frequency data revealed differences in population structure between the four survey zones containing populations of *O. edulis* (Figure 4). Both the Blackwater (zone A) and Bench Head (zone C) samples contained a high frequency of oysters with shell heights less than 39 mm (Figure 4), but these size classes were not present (except at very low frequency) in the Ray Sand samples. Principal components analysis of the size distribution data of all samples containing oysters, clustered individual samples from the Blackwater and Bench Head zones together (Figure 5), characterized by the presence of a higher proportion of individuals in the smaller size classes. These clusters of samples were separate from samples from oysters in the Ray Sand and Colne estuary zones, which lack individuals of these smaller shell height size classes (Figure 4). The high dredge sample abundances of *O. edulis* in the Ray Sand (zone D), were characterized by a noticeable lack of any individuals below 39 mm shell height (Figure 4).

### Relationship between substratum type and *Ostrea edulis* abundance

Of the 401 survey locations sampled in the proposed BCRC, 104 were characterized by dominant substratum types of gravel, shell



**Fig. 2.** Dredge abundance of *Ostrea edulis* within the Blackwater, Crouch, Roach and Colne (BCRC) Marine Conservation Zone during 2008–2012. Abundance ranged from 1 to 150 *O. edulis* per 100 m dredge. Dredge locations (re. Figure 1) that returned zero oysters are omitted.



**Fig. 3.** Number of *O. edulis* per 100 m dredge sample within the five estuary zones in the BCRC between 2008 and 2012. Box and whisker plot (solid line = median value, 25–75 quartiles, bar = 95% and outliers, dotted line = mean value).  $n$  = total number of dredge samples taken in survey zone. % = number of 100 m dredge samples containing one or more *O. edulis*. Densities in zones marked with same letters (a, b, c) are not significantly different from each other ( $P > 0.05$ ).

or cobble (Figure 6). Gravel was uncommon in samples across the region, whereas cobbles were present in the east of the area, mainly in the outer estuary zone (Figure 6). Shell and sand were widely distributed, except in the Colne estuary, where fine mud was the dominant substratum. Only four from a possible 118 survey locations within the Colne contained substratum  $>2$  mm in size (shell). There were significant differences in

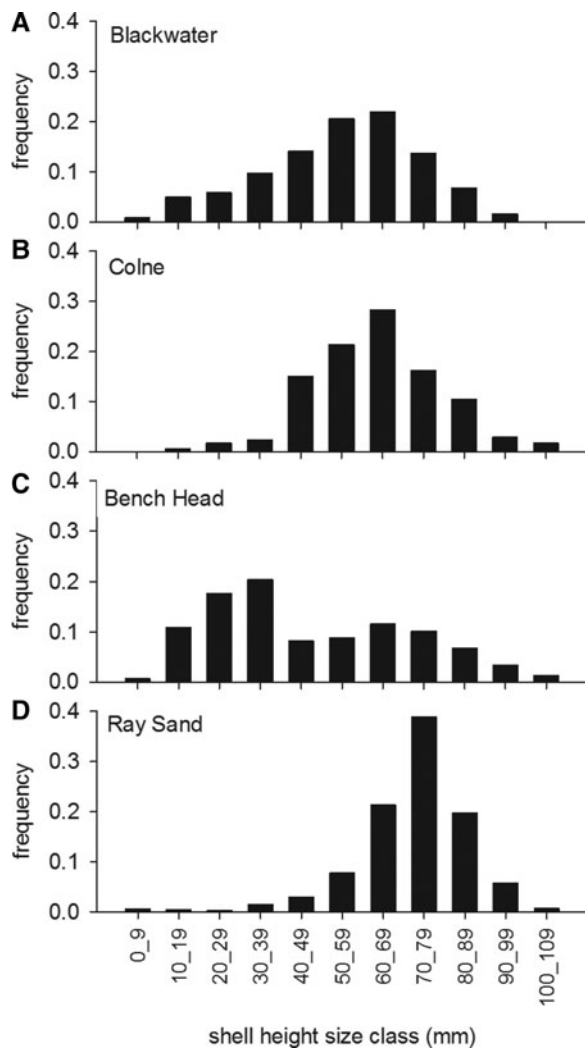
population density of *O. edulis* in relation to substratum type within the survey zones ( $H = 84.1$ , d.f. = 6,  $P < 0.001$ ), with shell associated with significantly higher numbers than any of the other substratum types. *Ostrea edulis* were also present on sand substrata, and, in the Colne Estuary, on fine muds (Figure 7).

#### Differences in water column environmental variables

There were no significant differences in mean water column temperature, Chl *a* and oxygen concentrations across the study region (Table 2) over the period January 2008 to December 2012. Salinity in the Outer Estuary (zone E) was significantly higher ( $P < 0.001$ ) than in zones A, B and D, though the differences in mean values were only between 33 and 32 ppt. Salinity values as low as 22 to 23 ppt were recorded on two occasions during winter months in the Blackwater (A) and Colne (B) zones, but this did not correspond with water temperature minima. The inner estuary zones A and B also had significantly higher mean nitrate and ammonium concentrations, with winter peaks in nitrate concentrations, and pH, whereas the highest suspended solid loads were found in the Bench Head zone (C) (Table 2). There were no significant associations between any of these water column environmental variables and the differences in density or population size structure of *O. edulis*.

#### Discussion

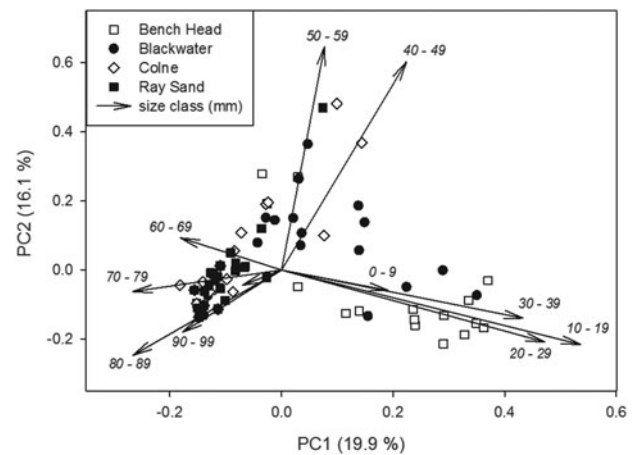
The spatial distribution of *O. edulis* across the study area was not uniform but centred around five distinct areas. The sub-populations of *O. edulis* located within the Blackwater Estuary were predominately contained within the BOA Several Order area. One cluster located within the Bench Head survey zone



**Fig. 4.** *Ostrea edulis* shell height size class distribution (frequency in each size class), in four estuary zones in the BCRC MCZ containing oysters between 2008 and 2012.

was contiguous with the sub-population within the Several Order area, while the other was located 5 km to the east, in the mouth of the Colne where substratum type is favourable for settlement. The fifth sub-population was geographically distinct, located 10 km to the South in the Ray Sand (Figure 2).

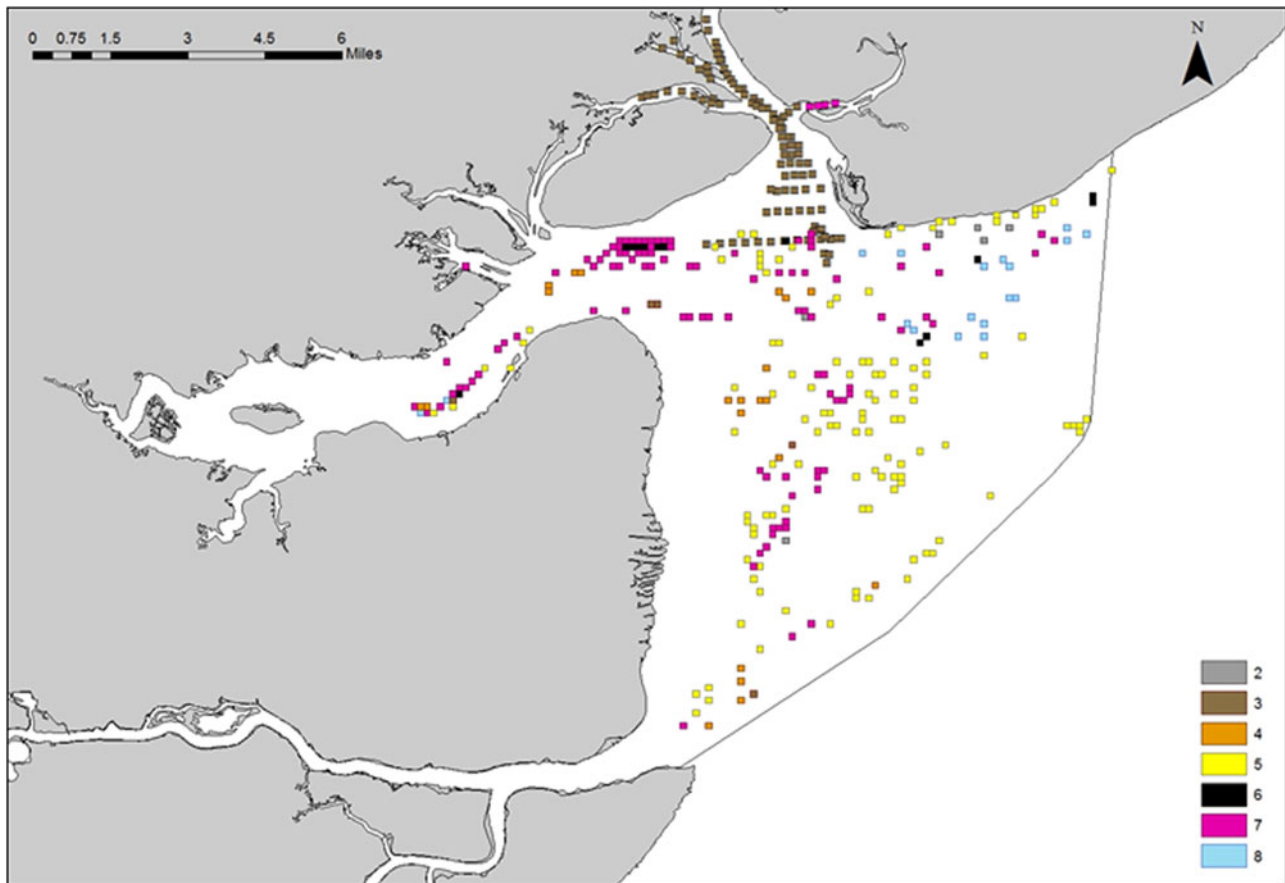
Two important factors in *O. edulis* recruitment are the presence of suitable substrata for settlement, and the presence of adult *O. edulis*, given the propensity of the species for gregarious settlement (Bayne, 1969; Laing *et al.*, 2006; Rodriguez-Perez *et al.*, 2019). Availability of suitable coarse sediment substratum is key to veliger settlement and recruitment (Rodriguez *et al.*, 1993; Smyth *et al.*, 2018). *Ostrea edulis* pediveligers show gregarious settlement behaviour, preferentially on shells of adult populations (Cole & Knight-Jones, 1949; Bayne, 1969) or on subtidal mixed sediments (Waugh, 1972), with varying preferences for different substratum properties and shell species types (Smyth *et al.*, 2018; Rodriguez-Perez *et al.*, 2019). We found higher abundance of *O. edulis* where bottom sediments were predominantly shell, but not exclusively so, in that *O. edulis* were also found on finer silty sediments in the Colne, when adults were present. It is likely that availability of suitable substrata in the BCRC MCZ will be a key element for successful settlement and further recovery of populations. However there were regions of suitable shell substrata that did not support *O. edulis* populations, indicating that successful recruitment and maintenance of *O. edulis* stocks at a site is not only dependent on substratum type. It should be noted



**Fig. 5.** Scatter plot of Principal Components 1 and 2 (explaining 36% of total variance) from PCA of *O. edulis* size frequency (shell height classes in mm) in four zones within the Blackwater, Crouch, Roach and Colne (BCRC) MCZ between 2008 and 2012. Each symbol is a single dredge sample containing oysters. Vectors indicate contribution of different size classes to the PC scores.

that our use of a 45 mm ring dredge sample for defining substratum types may underestimate the prevalence of finer muds, silts, sands and gravels but retaining larger shell and rocks from within extensive mud-based habitats. Grab surveys across the BCRC MCZ by Hardy (2014) and Allison (2019) confirm the general distribution of substrata reported here.

Highest dredge abundance of *O. edulis* were located in the Blackwater and Ray Sand zones. While the abundance was similar between these two sites, differences in size structure were observed. Size classes within the Blackwater had proportionally smaller size class individuals (10–39 mm shell height) when compared with the Ray Sand. Evidence of some recruitment was observed in the Ray Sand but the frequency of juveniles to the main adult size classes were lower than observed in the more highly managed Blackwater zone. Recent surveys of *O. edulis* in Portsmouth, Langstone and Chichester Harbours in the Solent, UK, also found narrowing age structures, and no evidence of recent recruitment in the last 5–6 years for Langstone and Chichester Harbours, and the last 8–10 years in Portsmouth Harbour (Helmer *et al.*, 2019). The mean and maximum shell height sizes reported in Helmer *et al.* (2019), with no oysters smaller than 45 mm found in their study, are similar to those in the Ray Sand (zone D), and to a lesser extent in the Colne (zone B), indicating a potential lack of significant recruitment in those zones in the years prior to our study. It is possible that this lack of recruitment is in part the result of low adult oyster densities throughout the BCRC MCZ (Richardson *et al.*, 1993), but also local density-dependent effects (Guy *et al.*, 2019). As male *O. edulis* broadcast spawn, low densities of adults can result in reduced fertilization of eggs within the females, reducing the reproductive viability as stock densities decline (Thurstan *et al.*, 2013; Guy *et al.*, 2019). *Ostrea edulis* is known to exhibit sporadic breeding success (Helmer *et al.*, 2019), and low spat falls were reported in the Solent, and in Ireland in the years 2010–2011 (Kamphausen, 2012; Tully & Clarke, 2012). However, the size profiles of oysters in the Blackwater and Bench Head zones indicate that there has been recent successful recruitment in those zones of the BCRC in the years before 2010–2012, but not uniformly across the MCZ. In particular, there has been almost no recruitment in the Ray Sand, despite high densities of large adult *O. edulis* present at that location. Estimations of the total and sub-population sizes and realized densities would be an appropriate next step to inform future management.



**Fig. 6.** Location and distribution of substratum types throughout the Blackwater, Crouch, Roach and Colne (BCRC) MCZ, recorded at each dredge site between 2008 and 2012. Substratum: (2) Silt, (3) Fine Mud, (4) Muddy Sand, (5) Sand, (6) Gravel, (7) Shell, (8) Cobble.

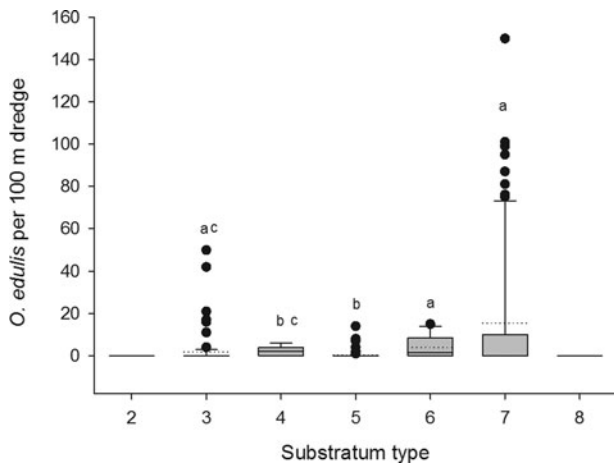
The presence of substratum suitable for settlement but low actual densities of *O. edulis*, for example in some areas such as the Colne and Bench Head zones, may also indicate a potential limitation in larval supply. *Ostrea edulis* are sequential hermaphrodites, with fertilization of eggs occurring within the mantle cavity by sperm brought into the shell by feeding currents (Guy *et al.*, 2019). *Ostrea edulis* shows a high physiological plasticity to ambient environmental conditions in its reproductive strategy (Joyce *et al.*, 2013), with temperature generally accepted to be the most important factor inducing reproductive activity (Laing *et al.*, 2005). Planktonic larval dispersal time ranges from 12–15 days depending on temperature and food availability (Hedgecock *et al.*, 2007; Marshall *et al.*, 2010; Filgueira *et al.*, 2015). Hardy (2014) and Allison (2019) conducted surveys of *O. edulis* veliger densities in the Colne, Bench Head and Blackwater zones during the breeding season (June–September) in 2009 and 2010, and during 2016, respectively. Average *O. edulis* veliger densities ranged from 55–135 individuals  $m^{-3}$  in 2009–2010 (Hardy, 2014) and 75–95 individuals  $m^{-3}$  in 2016 (Allison, 2019). These are comparable to densities between 18 and 54 individuals  $m^{-3}$  found in Strangford Lough in 1997 and 1998 (Kennedy & Roberts, 2006) and  $\sim 60$  individuals  $m^{-3}$  in Strangford Lough by Smyth *et al.* (2009). Such densities are, however, an order of magnitude lower than those reported from the Crouch and Roach Estuaries (between 900 and 1360 individuals  $m^{-3}$ ) during the spawning seasons of 1948 and 1949 (Knight-Jones, 1952), and between June to September 1950–1954 (between 10 and 10,000 individuals  $m^{-3}$ , mean 1448) (Waugh, 1957). In Kilkieran Bay, Ireland, *O. edulis* peak larval densities of 840 individuals  $m^{-3}$  were recorded during the summers of 1984 and 1985 (Wilson, 1987). Given the dependence on short planktonic phases within the life cycle, broodstock

density and hydrodynamics are important determinants of successful recruitment and maintenance of local populations of *O. edulis* (Kennedy & Roberts, 2006; Smyth *et al.*, 2018; Guy *et al.*, 2019). The shallow BCRC MCZ area is macrotidal (>5 m Spring tide range), with significant tidal flows and tidal volume exchanged across the region during tidal cycles, suggesting that hydrodynamic isolation of any particular location is unlikely. The low veliger densities, compared with earlier studies, would suggest a significant loss of breeding stock and hence veliger supply in the BCRC system since the 1950s, which would be a major contribution to lower spat fall and recruitment since then.

Siltation of the Colne and Ray Sand zones where *O. edulis* beds have been found historically may also be a contributing factor to the lack of recruitment in those areas. Higher silt loads have been negatively associated with larval settlement in the Solent (Barnes *et al.*, 1973) and Crouch (Shellbourne, 1957). Sidescan sonar surveys conducted by the Kent & Essex IFCA have shown that the substratum type is subtidal sand and subtidal mud and mixed sediments in these areas (KEIFCA, 2016). So even when shell was present in dredge samples, it may be buried or smothered *in situ* on the sea bed. Suspended solid loads are high in the southern North Sea, with highest suspended solid loads measured in the Bench Head zone of the BCCR during 2008–2012 (Table 2). However, there was no clear relationship between water column suspended solid loads and the presence of smaller shell height *O. edulis* in our survey; for example between the Blackwater and Ray Sand zones, which had similar water column suspended solid loads, but different *O. edulis* size and recruitment profiles.

There was no evidence of water quality (in terms of food availability, e.g. Chl *a* concentrations, oxygen levels, temperature or salinity; Table 2) being significantly associated with the observed





**Fig. 7.** Number of *O. edulis* found per 100 m dredge on each sediment substratum type in the Blackwater, Crouch, Roach and Colne MCZ area. Box and whisker plot (solid line = median value, 25–75 quartiles, bar = 95% and outliers, dotted line = mean value). Densities on substratum types marked with similar letters (a, b, c) are not significantly different from each other ( $P < 0.05$ ).

distribution of *O. edulis* in this study. *Ostrea edulis* is sensitive to low temperature in winter and low salinity during prolonged periods of freshwater inputs, and this can restrict distribution in the meso- and oligohaline portions of estuaries (Hutchinson & Hawkins, 1992; Gosling, 2003). Temperature and salinity differences between the five zones were not sufficient to be a cause of patterns of *O. edulis* distribution. For example, lower salinity and occasional low temperatures equally affected both the Blackwater (abundant and recruiting *O. edulis* populations) and Colne zones (low density, little recruitment of *O. edulis*). The BCRC receives high loads of nutrients, particularly nitrogen, from both agricultural run-off and treated waste water (Nedwell *et al.*, 2002), with declining loads in recent years (McMellor & Underwood, 2014), although high suspended sediment loads generally prevent the occurrence of deleterious phytoplankton blooms (Kocum *et al.*, 2002) and there is no water column de-oxygenation. Despite differences in water column environmental variables between the five zones (Table 2), none of these corresponds to, or explains, differences in recruitment to *O. edulis* populations observed across the Ray Sand, Colne, Bench Head or Blackwater zones.

Habitat loss has been cited as one of the major factors contributing to the decline of *O. edulis* stocks across its range (Laing & Spencer, 2006). Over longer time periods (decades to centuries), changes to the benthic community in coastal waters due to anthropogenic activity is associated with changes in bottom sediments to less favourable conditions for *O. edulis* (Thurstan *et al.*, 2013; Pogoda, 2019). Modelling indicates that stocks of oysters from pre-harvesting periods would have been able to filter whole estuary volumes within estuary water residence timescales in US estuaries (Zu Ermgassen *et al.*, 2013). The extensive beds of *O. edulis* in the North Sea reported in Olsen (1883) would have had a significant effect as ecosystem engineers, including in the Essex estuaries before the industrial-scale removal of stocks. The removal of biogenic reef structures and repeated benthic dredging for finfish and shellfish can result in a decline in sediment grain size (Tully & Clarke, 2012; Thurstan *et al.*, 2013; Pogoda, 2019) and loss of shelled macrofauna (Eggleton *et al.*, 2018). Coupled with these effects, the spread of the non-native *Crepidula fornicata*, which produces significant quantities of fine particulate pseudofaeces that lowers functional grain size, and competes for space, could reduce *O. edulis* recruitment and survival (Orton, 1912; Nehls *et al.*, 2006; Helmer *et al.*, 2019).

These factors may have a role to play in the long-term decline in *O. edulis* across the southern North Sea region and the Essex estuaries (Pogoda, 2019). The Essex estuary region is now in an anthropogenically altered condition, distant from its historical ecological baseline (Zu Ermgassen *et al.*, 2012; Thurstan *et al.*, 2013; Pogoda, 2019).

It is not yet clear whether closure of the open grounds (zones C, D, E, Figure 1) to commercial oyster fishing in 2012 (after our study was undertaken) will result in a recovery without other active interventions. Stocks in the Colne Estuary did not recover in the 40 years since the cessation of the commercial fishery after 1962–63, despite this being a private ground. Partial closures in the Solent area for periods of 5–10 years did not appear to increase *O. edulis* recruitment (Helmer *et al.*, 2019). Restocking of depleted fisheries has been a traditional approach to restore stocks (Table 1), often by taking stock from other, often geographically distant, locations, so not actually increasing stocks overall (Laver, 1916; Thurstan *et al.*, 2013; Fariñas-Franco *et al.*, 2018). In recent times commercial hatcheries have provided seed stock, and have been successful in re-establishing populations (Kennedy & Roberts, 2006; Smyth *et al.*, 2009) but such an approach raises concerns around pest and disease transfer, and loss of genetic diversity (Vera *et al.*, 2016; Fariñas-Franco *et al.*, 2018). High numbers of oysters remaining in the Blackwater Several Order area, managed by the Blackwater Oysterman's Association, may reduce the reliance on external sources of oyster stock for restoration in the wider BCRC MCZ.

*Ostrea edulis* populations face a range of associated challenges: sporadic recruitment, stock declines, invasive species, disease and altered benthic habitats. As such, active interventions are considered the most likely route to successful restoration of *O. edulis* with numerous initiatives in Europe (e.g. NORA; Pogoda *et al.*, 2018) and the USA (Zu Ermgassen *et al.*, 2012; Fariñas-Franco *et al.*, 2018; Pogoda, 2019). Most have focused on restoration either for the purpose of conservation, or for their value as a fisheries resource, with active management using traditional fisheries methods such as harrowing and dredging in conflict with some conservation values (Bromley *et al.*, 2016). In the BCRC MCZ, the long history of oyster cultivation, expertise in traditional management methods, and the exclusion of common fisheries to some areas through private lease, was closely associated with areas where *O. edulis* was present and recruiting. Oyster cultivation practices by the BOA including relaying of shell culch and harrowing of slipper limpet aggregations ('cleaning the ground') prior to the spawning period (Laing *et al.*, 2006). This traditional practice is under scrutiny as a means to promote *O. edulis* settlement due to the reliance on dredging of the seabed. The use of harrowing to clean ground in Lough Foyle found no significant difference in settlement rate between harrowed and unharrowed test plots (Bromley *et al.*, 2016), and harrowing could over long periods contribute to the deterioration of suitable substratum, by breaking shell into particles that are too small to receive veligers (Tully & Clarke, 2012). This, and other trials (KEIFCA, 2016), have been criticized by oyster fishermen as not fully replicating their overall management of oyster layings. A recent review looking at the effects of fishing on marine SACs concluded that interaction of fishing gear with certain subtidal biotopes can have a significant effect on the species present and community structure (DEFRA, 2014). Though there are concerns about the impact of harrowing, and of traditional dredge harvesting on the structure of the sea bed, and on biogenic reef formation in particular, harrowing is used by the BOA in the private lease areas of the Blackwater zone. It is important to note that these are areas where *O. edulis* sample abundance are highest and show evidence of sustained and relatively high recruitment, despite physical disturbance. While differences in opinion on the



role of fisheries in active restoration of the European native oyster remain (Pogoda, 2019), partnership working between local stakeholders, conversation bodies, government and academia was the required ethos of the UK Marine and Coastal Access Act 2009. In the BCRC MCZ, this has led to a conservation-led fisheries byelaw and management plan that acknowledges the role of private oyster aquaculture in securing stock and as a potential method for promoting initial recruitment of oyster spat in restoration zones (KEIFCA, 2018a, 2018b). If successful, this will support both the restoration of *O. edulis* as a species, and support the continuation of this important regional and traditional coastal heritage fishery.

The presence of recruiting aggregations of *O. edulis* in the period 2008 to 2012 provides evidence that the Essex estuaries are one of the last remaining strongholds of native flat oysters in the southern North Sea. Though further work is required to assess the densities of these oysters and the structure of the habitats they create, and to undertake an updated stock assessment, this clearly represents a significant population in comparison to other regional assessments (Helmer *et al.*, 2019; Pogoda, 2019). This justified the designation of this site as a MCZ to protect and restore *O. edulis* populations and habitats in 2013 (Defra, 2013).

**Acknowledgements.** We acknowledge the significant technical support of Russell Smart, John Green, Tania Cresswell-Maynard (University of Essex), and from Graham Larkin, Kevin Gooch, Daniel French and Alan Bird, for their extensive support for field sampling and expert knowledge of the Essex Oyster fisheries. We thank two anonymous reviewers for their constructive comments.

**Financial support.** Sarah Allison was funded in part by the Essex Wildlife Trust. Malcolm Hardy was partly funded by Colchester Oyster Fishery Ltd. This work was partly supported by the UK Natural Environment Research Council, Coastal Biodiversity and Ecosystem Services programme (Ref NE/J01561X/1) to GJCU.

## References

- Allison S (2019) *The Endangered European Native Oyster Ostrea edulis (L.) and Creation of Marine Conservation Zones: A Win-Win Scenario for Fisheries and Conservation?* (PhD thesis). University of Essex, Colchester, UK.
- Balanced Seas (2012) Regional MCZ project final report: Balanced Seas (MCZ002). Available at <http://publications.naturalengland.org.uk/publication/1463173> (Accessed 27 May 2019).
- Barnes RS and Coughlan J (1971) A survey of the bottom fauna of the Blackwater estuary. *Essex Naturalist* **32**, 263–276.
- Barnes RSK, Coughlan J and Holmes NJ (1973) A preliminary survey of the macroscopic bottom fauna of the Solent, with particular reference to *Crepidula fornicata* and *Ostrea edulis*. *Proceedings of the Malacological Society* **40**, 253–275.
- Bayne B (1969) The gregarious behaviour of the larvae of *Ostrea edulis* (L.) at settlement. *Journal of the Marine Biological Association of the United Kingdom* **49**, 327–356.
- Beck MW, Brumbaugh R, Airoldi L, Carranza A, Coen L, Crawford C, Defeo O, Edgar G, Hancock B and Kay M (2009) *Shellfish Reefs at Risk: A Global Analysis of Problems and Solutions*. Santa Cruz, CA: The Nature Conservancy, Institute of Marine Sciences, University of California.
- Bromley C, McGonigle C, Ashton EC and Roberts D (2016) Restoring degraded European native oyster, *Ostrea edulis*, habitat: is there a case for harrowing? *Hydrobiologia* **768**, 151–165.
- Chesman BS, Burt GR and Langston WJ (2006) Characterisation of European marine sites. Essex Estuaries European Marine Site. *Marine Biological Association of the United Kingdom Occasional publication no. 17*, 198 pp.
- Cole HA and Knight-Jones EW (1949) The settling behaviour of larvae of the European flat oyster, *Ostrea edulis* (L.) and its influence on methods of cultivation and spat collection. *Fishery Investigations, Series II* **17**, 1–39.
- Crisp D (1964) The effects of the severe winter of 1962–63 on marine life in Britain. *Journal of Animal Ecology* **33**, 165–210.
- Defra (2013) *Blackwater, Crouch, Roach & Colne Estuaries Designation Order*. Available at <http://www.legislation.gov.uk/ukmo/2013/3/created>.
- Defra (2014) *Management of Fisheries in European Marine Sites: Implementation Group*. Available at <https://www.gov.uk/government/publications/fisheries-in-european-marine-sites-matrix>.
- Eggleton JD, Depestele J, Kenny AJ, Bolam SG and Garcia C (2018) How benthic habitats and bottom trawling affect trait composition in the diet of seven demersal and benthivorous fish species in the North Sea. *Journal of Sea Research* **142**, 132–146.
- European Commission (2007) *Guidelines for the establishment of a Natura 2000 network in the Marine Environment: Application of the Habitats & Birds Directive*. Available at [http://ec.europa.eu/environment/nature/natura2000/marine/docs/marine\\_guidelines.pdf](http://ec.europa.eu/environment/nature/natura2000/marine/docs/marine_guidelines.pdf).
- Fariñas-Franco JM, Pearce B, Mair JM, Harries DB, MacPherson RC, Porter JS, Reimer PJ and Sanderson WG (2018) Missing native oyster (*Ostrea edulis* L.) beds in a European Marine Protected Area: should there be widespread restorative management? *Biological Conservation* **221**, 293–311.
- Filgueira R, Brown MS, Comeau LA and Grant J (2015) Predicting the timing of the pediveliger stage of *Mytilus edulis* based on ocean temperature. *Journal of Molluscan Studies* **81**, 269–273.
- Guy C, Smyth D and Roberts D (2019) The importance of population density and interindividual distance in conserving the European oyster *Ostrea edulis*. *Journal of the Marine Biological Association of the United Kingdom* **99**, 587–593.
- Gosling E (2003) *Bivalve Molluscs: Biology, Ecology and Culture*. Oxford: Fishing News Books, Blackwell Science, 443 pp.
- Hardy MJ (2014) *The Native European Oyster, Ostrea edulis (L.), in the Colne Estuary: Its Distribution, Density, Habitat Biodiversity Value and Prospects for Regeneration* (PhD thesis). University of Essex, Colchester, UK.
- Hawkins LE, Hutchinson S and Devall CA (2000) Flat oyster culture; an evaluation of traditional methods. *Shellfish News* **10**, 5–7.
- Hedgecock D, Launey S, Pudovkin A, Naciri Y, Lapegue S and Bonhomme F (2007) Small effective number of parents (N<sub>b</sub>) inferred for a naturally spawned cohort of juvenile European flat oysters *Ostrea edulis*. *Marine Biology* **150**, 1173–1182.
- Helmer L, Farrell P, Hendy I, Harding S, Robertson M and Preston J (2019) Active management is required to turn the tide for depleted *Ostrea edulis* stocks from the effects of overfishing, disease and invasive species. *PeerJ* **7**, e6431.
- Hutchinson S and Hawkins LE (1992) Quantification of the physiological responses of the European flat oyster, *Ostrea edulis* (L.) to temperature and salinity. *Journal of Molluscan Studies* **58**, 215–226.
- JNCC (2010) *Marine Conservation Zone Project: Ecological Network Guidance Joint Nature Conservation Committee*. Available at [http://jncc.defra.gov.uk/PDF/100705\\_ENG\\_v10.pdf](http://jncc.defra.gov.uk/PDF/100705_ENG_v10.pdf).
- JNCC (2016) *Special Protection Areas (SPAs): UK*. Available at <http://jncc.defra.gov.uk/page-162>.
- Joyce A, Holthuis TD, Charrier G and Lindgarth S (2013) Experimental effects of temperature and photoperiod on synchrony of gametogenesis and sex ratio in the European oyster *Ostrea edulis* (Linnaeus). *Journal of Shellfish Research* **32**, 447–458.
- Kamphausen L (2012) *The Reproductive Processes of a Wild Population of the European Flat Oyster Ostrea edulis in the Solent, UK* (PhD thesis). University of Southampton, Southampton, UK.
- Kennedy RJ and Roberts D (2006) Commercial oyster stocks as a potential source of larvae in the regeneration of *Ostrea edulis* in Strangford Lough, Northern Ireland. *Journal of the Marine Biological Association of the United Kingdom* **86**, 153–159.
- Kent and Essex Inshore Fisheries and Conservation Authority (KEIFCA) (2016) Committee papers May 2016 Agenda item B7. Available at <https://kentandessex.ifca.gov.uk>.
- Kent and Essex Inshore Fisheries and Conservation Authority (KEIFCA) (2018a) Blackwater, Crouch, Roach and Colne Estuaries Marine Conservation Zone native oyster fishery flexible permit byelaw. Available at <https://kentandessex.ifca.gov.uk>.
- Kent and Essex Inshore Fisheries and Conservation Authority (KEIFCA) (2018b) *Permitted BCRC Native Oyster Fishery Management Plan*. Available at <https://kentandessex.ifca.gov.uk>.
- Knight-Jones EW (1952) Reproduction of oysters in the rivers Crouch and Roach, Essex, during 1947, 1948 and 1949. *Fishery Investigations Series II* **17**, 1–48.
- Kocum E, Underwood GJC and Nedwell DB (2002) Simultaneous measurement of phytoplankton primary production, nutrient and light availability along a turbid, eutrophic UK east coast estuary (the Colne Estuary). *Marine Ecology Progress Series* **231**, 1–12.

- Laing I and Spencer B** (2006) Bivalve cultivation: criteria for selecting a site. *CEFAS Science Series Technical Report* **136**, 34 pp.
- Laing I, Walker P and Areal F** (2005) A feasibility study of native oyster (*Ostrea edulis*) stock regeneration in the UK. *CARD Project FC1016 Native Oyster Stock Regeneration – A Review of Biological, Technical and Economic Feasibility*. DEFRA and Seafish.
- Laing I, Walker P and Areal F** (2006) Return of the native – is European oyster (*Ostrea edulis*) stock restoration in the UK feasible? *Aquatic Living Resources* **19**, 283–287.
- Laver H** (1916) *The Colchester Oyster Fishery*. Colchester: The Authority of the Colne Fishery Board, pp. 1–254.
- Marshall R, McKinley S and Pearce CM** (2010) Effects of nutrition on larval growth and survival in bivalves. *Reviews in Aquaculture* **2**, 33–55.
- McMellor S and Underwood GJC** (2014) Water policy effectiveness: 30 years of change in the hypernutrified Colne estuary, England. *Marine Pollution Bulletin* **81**, 200–209.
- Nedwell DB, Dong LF, Sage AS and Underwood GJC** (2002) Variations of the nutrient loads to the mainland U.K. estuaries: correlation with catchment areas, urbanisation and coastal eutrophication. *Estuarine Coastal and Shelf Science* **54**, 951–970.
- Nedwell DB, Underwood GJC, McGenity TJ, Whitby C and Dumbrell AJ** (2016) The Colne Estuary: a long-term microbial ecology observatory. *Advances in Ecological Research* **55**, 227–281.
- Nehls G, Diederich S, Thielges DW and Strasser M** (2006) Wadden Sea mussel beds invaded by oysters and slipper limpets: competition or climate control? *Helgoland Marine Research* **60**, 135–143.
- NORA**. *Native Oyster Restoration Alliance*. Available at <https://nora-europe.eu/>.
- Olsen OT** (1883) *The Piscatorial Atlas of the North Sea, English and St. George's Channels*. London: Taylor and Francis.
- Orton JH** (1912) An account of the natural history of the slipper-limpet (*Crepidula fornicata*), with some remarks on its occurrence on the oyster grounds of the Essex coast. *Journal of the Marine Biological Association of the United Kingdom* **9**, 437–443.
- OSPAR** (2009) Background document for *Ostrea edulis* and *Ostrea edulis* beds. In Haelters J and Francis Kerckhof F (eds), *Biodiversity Series* 428. Paris: OSPAR Commission, pp. 1–22.
- Pogoda B** (2019) Current status of European oyster decline and restoration in Germany. *Humanities* **8**, 9.
- Pogoda B, Brown JH, Hancock B and von Nordheim H** (2018) *Berlin Oyster Recommendation on the Future of Native Oyster Restoration in Europe*. Berlin, Germany 1–3 November 2017. Available at <https://nora-europe.eu/wp-content/uploads/2018/Berlin-Oyster-Recommendation-Part-1.pdf>.
- Rees HL, Waldock R, Matthiessen P and Pendle MA** (1999) Surveys of the epibenthos of the Crouch estuary (United Kingdom) in relation to TBT concentration. *Journal of the Marine Biological Association of the United Kingdom* **79**, 209–223.
- Rees HL, Waldock R, Matthiessen P and Pendle MA** (2001) Improvements in the epifauna of the Crouch estuary (United Kingdom) following a decline in TBT concentrations. *Marine Pollution Bulletin* **42**, 137–144.
- Richardson CA, Collis SA, Ekaratne K, Dare P and Key D** (1993) Age determination and growth rate of the European flat oyster, *Ostrea edulis*, in British waters determined from acetate peels of umbo growth lines. *ICES Journal of Marine Science* **50**, 493–500.
- Rodriguez SR, Ojeda FP and Inestrosa NC** (1993) Settlement of benthic marine invertebrates. *Marine Ecology Progress Series* **97**, 193–207.
- Rodriguez Perez A, James M, Donnan DW, Henry TB, Møller LF and Sanderson WG** (2019) Conservation and restoration of a keystone species: understanding the settlement preferences of the European oyster (*Ostrea edulis*). *Marine Pollution Bulletin* **138**, 312–321.
- Shellbourne JE** (1957) The 1951 oyster stock in the rivers Crouch and Roach, Essex and the influence of water currents and scour on its distribution: with an account of comparative dredging experiments. *Fishery Investigations Series II* **21**, 1–27.
- Smyth D, Roberts D and Browne L** (2009) Impacts of unregulated harvesting on a recovering stock of native oysters (*Ostrea edulis*). *Marine Pollution Bulletin* **58**, 916–922.
- Smyth D, Mahon AM, Roberts D and Kregting L** (2018) Settlement of *Ostrea edulis* is determined by the availability of hard substrata rather than by its nature: implications for stock recovery and restoration of the European oyster. *Aquatic Conservation: Marine and Freshwater Ecosystems* **2018**, 1–10. <https://doi.org/10.1002/aqc.2876>.
- Thurstan RH, Hawkins JP, Rady L and Roberts CM** (2013) Oyster (*Ostrea edulis*) extirpation and ecosystem transformation in the Firth of Forth, Scotland. *Journal of Nature Conservation* **21**, 253–261.
- Tully O and Clarke S** (2012) The status and management of oyster (*Ostrea edulis*) in Ireland. *Irish Fisheries Investigations* **24**, 1–36.
- UK Biodiversity Plan (UKBAP)** (2009) *Native Oyster (Ostrea edulis) Species Action Plan*. UK Biodiversity Group Tranche 2 Action Plans – Volume V: Maritime species and habitats (October 1999, Tranche 2, Vol. V, p. 67). Available at [http://jncc.defra.gov.uk/PDF/UKBAP\\_Species-HabitatsReview-2007.pdf](http://jncc.defra.gov.uk/PDF/UKBAP_Species-HabitatsReview-2007.pdf).
- Vera M, Carlsson J, Carlsson JEL, Cross T, Lynch S, Kamermans P, Villalba A, Culloy S and Martinez P** (2016) Current genetic status, temporal stability and structure of the remnant wild European flat oyster populations: conservation and restoring implications. *Marine Biology* **163**, 239. <http://dx.doi.org/10.1007/s00227-016-3012-x>.
- Waugh GD** (1957) Oyster production in the river Crouch and Roach, Essex, from 1950 to 1954. *Fisheries Investigation Series II* **21**, 1–47.
- Waugh GD** (1972) *Settlement of Ostrea edulis (L.), in Relation to the Cultivation of Oyster Grounds*. Ministry of Agriculture, Fisheries and Food, UK.
- Wilson JH** (1987) Temporal and spatial distribution of *Ostrea edulis* larvae in Kilkieran Bay, Co. Galway. *Irish Fisheries Investigations Series B* **29**, 1–14.
- Zu Ermgassen PSE, Spalding MD, Blake B, Coen LD, Dumbauld B, Geiger S, Grabowski JH, Grizzle R, Luckenbach M and McGraw K** (2012) Historical ecology with real numbers: past and present extent and biomass of an imperilled estuarine habitat. *Proceedings of the Royal Society B: Biological Sciences* **279**, 3393–3400.
- Zu Ermgassen PSE, Spalding MD, Grizzle RE and Brumbaugh RD** (2013) Quantifying the loss of a marine ecosystem service: filtration by the Eastern Oyster in US estuaries. *Estuaries and Coasts* **36**, 36–43.