

University of Dundee

International consensus guideline for reporting transmission electron microscopy results in the diagnosis of Primary Ciliary Dyskinesia (BEAT PCD TEM Criteria)

Shoemark, Amelia; Boon, Mieke; Brochhausen, Christoph; Bukowy-Bieryllo, Zuzanna; Margherita De Santi, Maria; Goggin, Patricia

Published in:
European Respiratory Journal

DOI:
[10.1183/13993003.00725-2019](https://doi.org/10.1183/13993003.00725-2019)

Publication date:
2020

Document Version
Peer reviewed version

[Link to publication in Discovery Research Portal](#)

Citation for published version (APA):

Shoemark, A., Boon, M., Brochhausen, C., Bukowy-Bieryllo, Z., Margherita De Santi, M., Goggin, P., Griffin, P., Hegele, R. G., Hirst, R. A., Leigh, M. W., Lupton, A., MacKenney, K., Omran, H., Pache, J-C., Pinto, A., Reinholt, F. P., Schroeder, J., Yiallourous, P., & Escudier, E. (2020). International consensus guideline for reporting transmission electron microscopy results in the diagnosis of Primary Ciliary Dyskinesia (BEAT PCD TEM Criteria). *European Respiratory Journal*, 55, [1900725]. <https://doi.org/10.1183/13993003.00725-2019>

General rights

Copyright and moral rights for the publications made accessible in Discovery Research Portal are retained by the authors and/or other copyright owners and it is a condition of accessing publications that users recognise and abide by the legal requirements associated with these rights.

- Users may download and print one copy of any publication from Discovery Research Portal for the purpose of private study or research.
- You may not further distribute the material or use it for any profit-making activity or commercial gain.
- You may freely distribute the URL identifying the publication in the public portal.

Take down policy

If you believe that this document breaches copyright please contact us providing details, and we will remove access to the work immediately and investigate your claim.

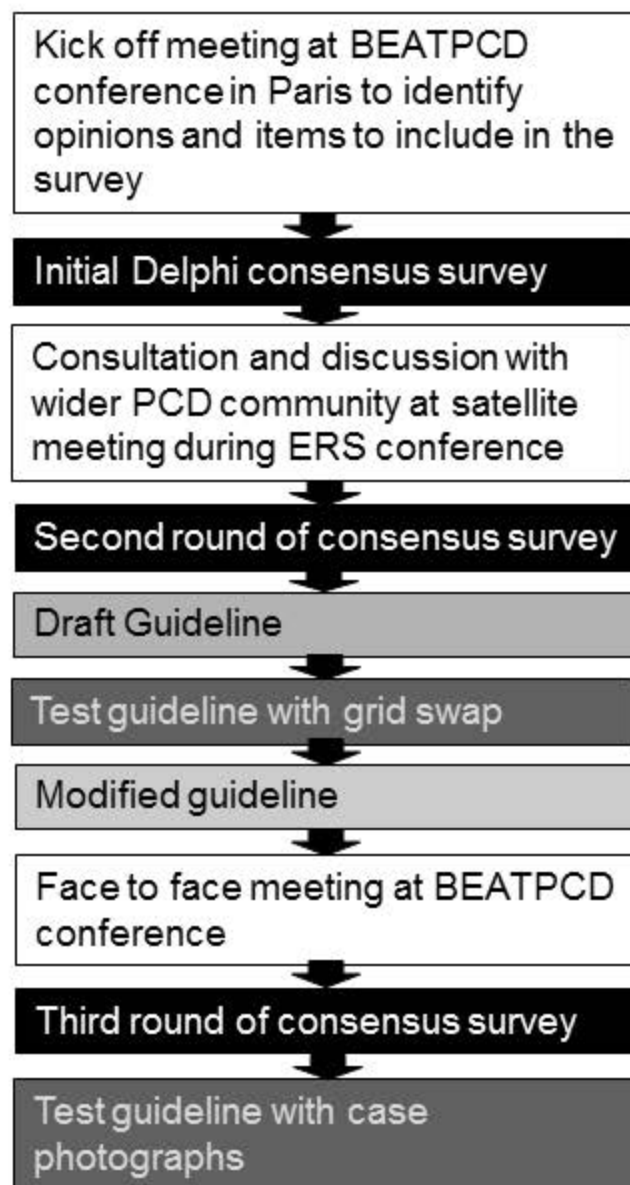


Figure1: Guideline development methodology

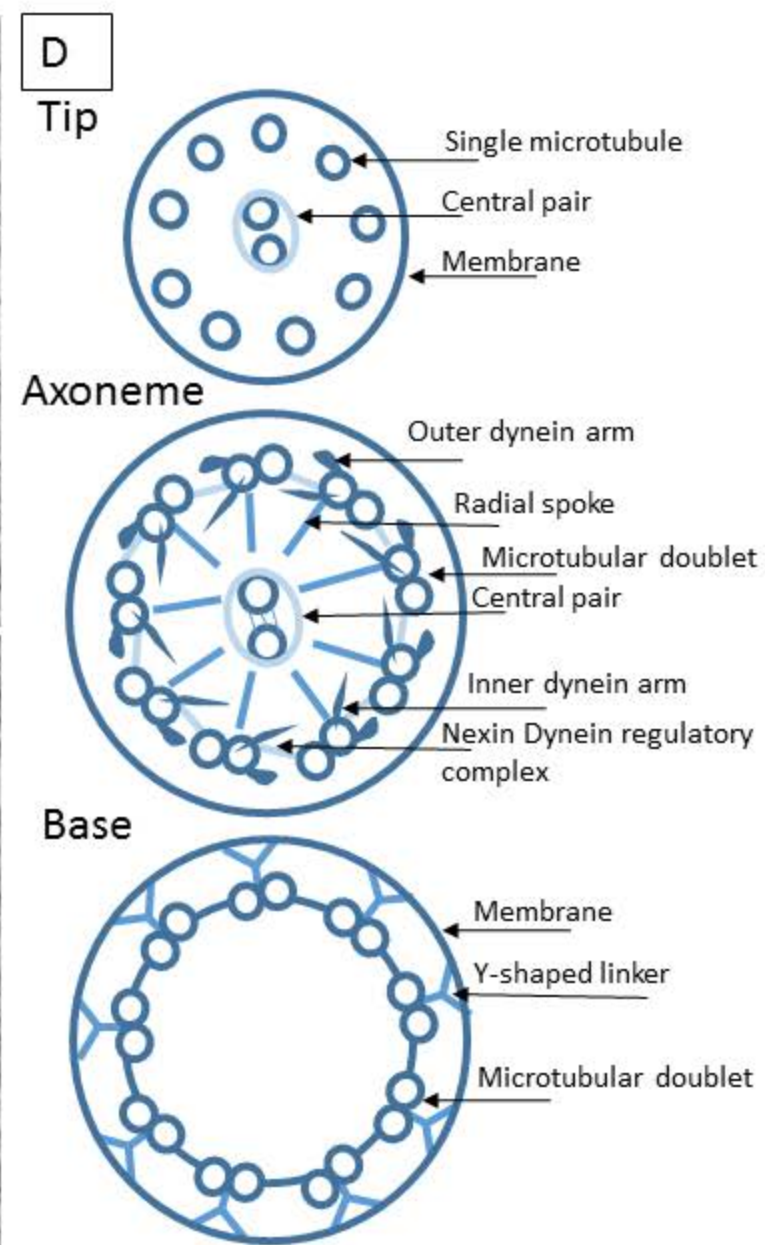
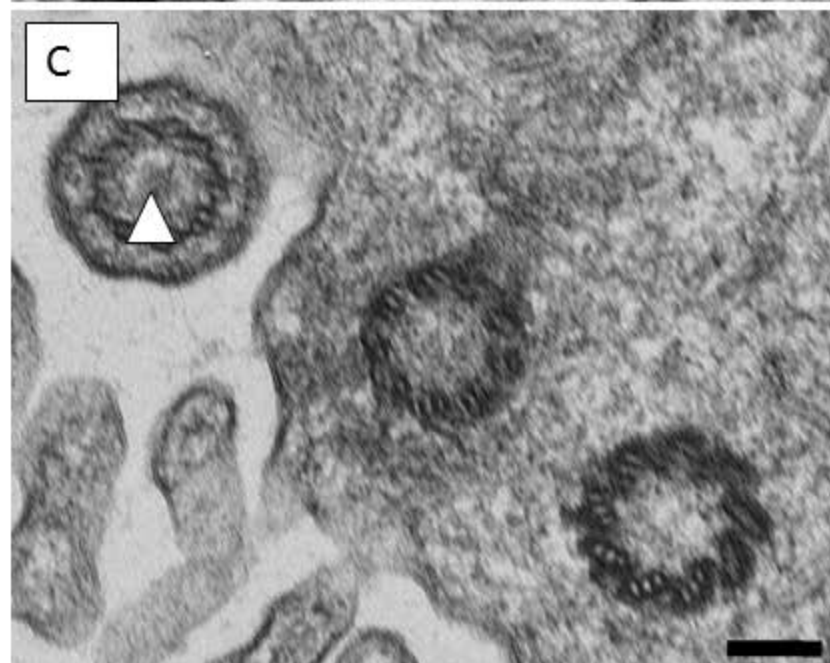
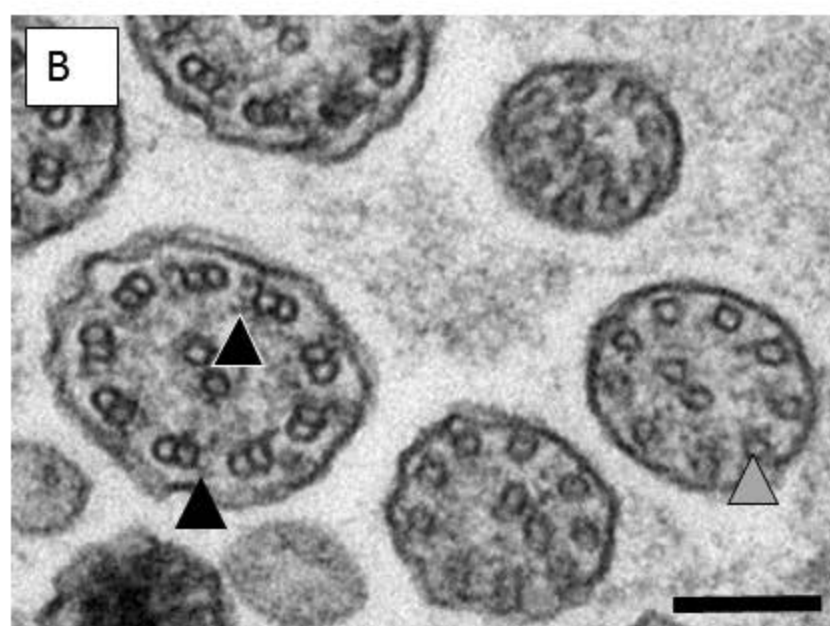
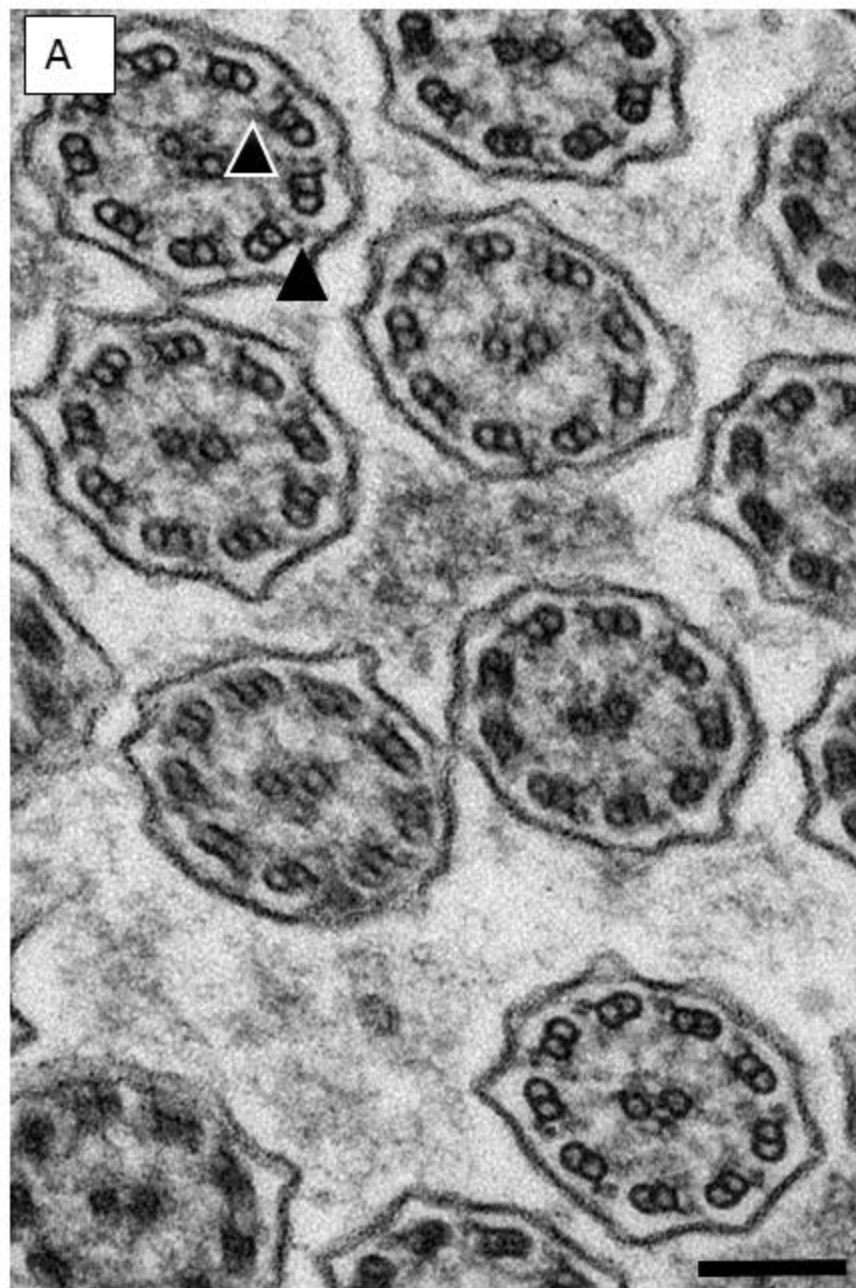
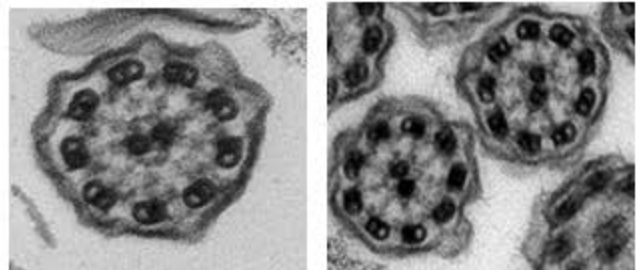
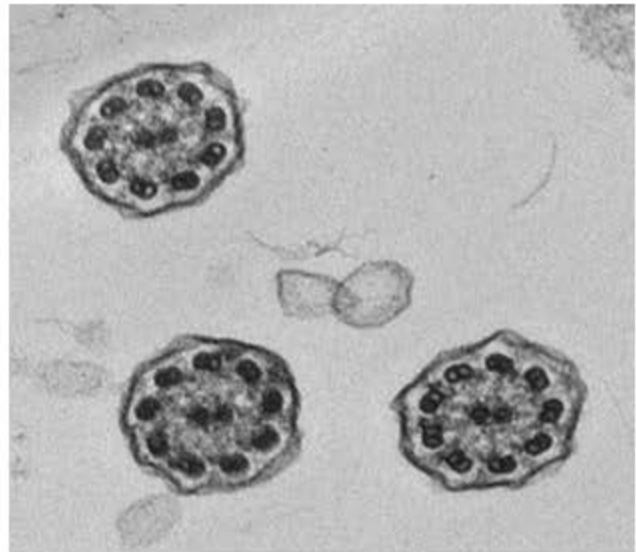
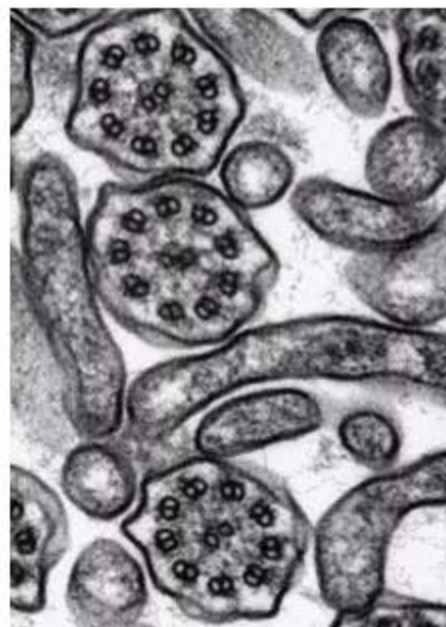


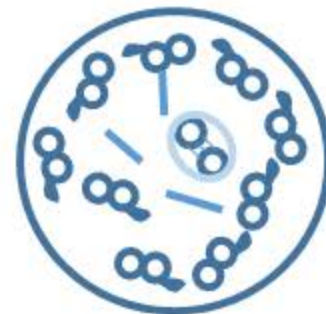
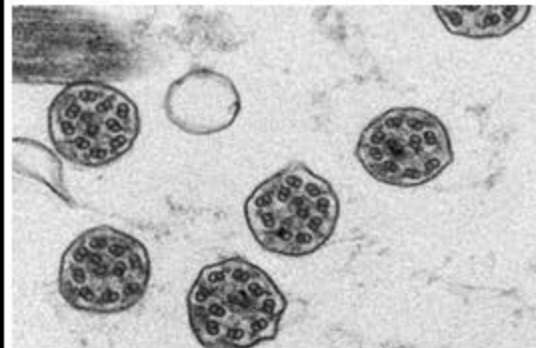
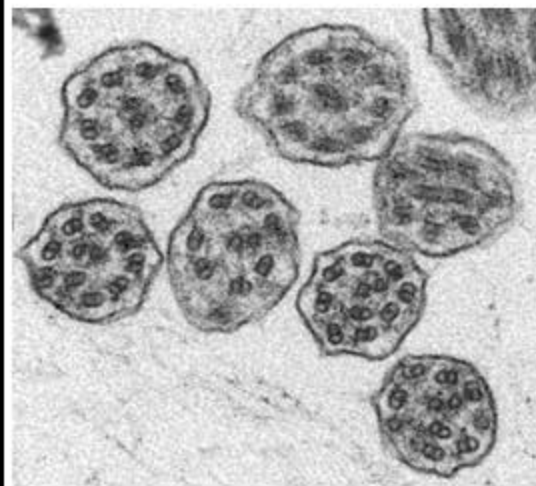
Figure 2: Normal ciliary ultrastructure



Outer dynein arm defect



Outer and inner
dynein arm defect



Microtubular
disorganisation and inner
dynein arm defect