

Open Research Online

The Open University's repository of research publications and other research outputs

Cross-kingdom signalling regulates spore germination in the moss *Physcomitrella patens*

Journal Item

How to cite:

Vesty, Eleanor F.; Whitbread, Amy L.; Needs, Sarah; Tanko, Wesal; Jones, Kirsty; Halliday, Nigel; Ghaderiardakani, Fatemeh; Liu, Xiaoguang; Cámara, Miguel and Coates, Juliet C. (2020). Cross-kingdom signalling regulates spore germination in the moss *Physcomitrella patens*. *Scientific Reports*, 10(1), article no. 2614.

For guidance on citations see [FAQs](#).

© 2020 The Authors

Version: Version of Record

Link(s) to article on publisher's website:

<http://dx.doi.org/doi:10.1038/s41598-020-59467-5>

Copyright and Moral Rights for the articles on this site are retained by the individual authors and/or other copyright owners. For more information on Open Research Online's data [policy](#) on reuse of materials please consult the policies page.

oro.open.ac.uk

OPEN

Cross-kingdom signalling regulates spore germination in the moss *Physcomitrella patens*

Eleanor F. Vesty^{1,2}, Amy L. Whitbread^{1,3,7}, Sarah Needs^{1,4,7}, Wesal Tanko^{1,7}, Kirsty Jones^{1,7}, Nigel Halliday⁵, Fatemeh Ghaderiardakani¹, Xiaoguang Liu^{5,6}, Miguel Cámara^{5*} & Juliet C. Coates^{1*}

Plants live in close association with microorganisms that can have beneficial or detrimental effects. The activity of bacteria in association with flowering plants has been extensively analysed. Bacteria use quorum-sensing as a way of monitoring their population density and interacting with their environment. A key group of quorum sensing molecules in Gram-negative bacteria are the *N*-acylhomoserine lactones (AHLs), which are known to affect the growth and development of both flowering plants, including crops, and marine algae. Thus, AHLs have potentially important roles in agriculture and aquaculture. Nothing is known about the effects of AHLs on the earliest-diverging land plants, thus the evolution of AHL-mediated bacterial-plant/algal interactions is unknown. In this paper, we show that AHLs can affect spore germination in a representative of the earliest plants on land, the Bryophyte moss *Physcomitrella patens*. Furthermore, we demonstrate that sporophytes of some wild isolates of *Physcomitrella patens* are associated with AHL-producing bacteria.

Plants do not exist in isolation in the environment, but interact with a wide array of organisms from all kingdoms including bacteria, fungi, animals and other plants. These interactions can have profound effects on plant fitness, growth and development. In addition to pathogenicity or parasitism, interactions between plants and other organisms can be beneficial. Examples include interactions between fungi and plants in the form of mycorrhizae and interactions between plants and bacteria^{1–3}.

Interactions between plants and microorganisms have become more elaborate during plant evolution. Mycorrhizal interactions are beneficial in liverworts, one of the earliest diverging groups of land plants, where the association between liverworts and fungi boosts plant photosynthesis, growth, fitness and nitrogen/phosphorus uptake^{4,5}. In later-diverging plants including flowering plants, interactions with microorganisms have increased in complexity. For example, in legumes (Fabaceae, including beans and pulses) plant root cells are surrounded by a group of proteobacteria (Rhizobia) and form a symbiotic root nodule⁶ while actinobacteria from the *Frankia* genus can form nodules with a wide range of plant families^{7,8}. The bacteria gain carbon from the plant, while the plant gains nitrogen from the bacteria. Not all plant-bacterial interactions are so highly specialised: many bacteria in the rhizosphere contribute to plant productivity and gain from plants in return⁹.

It has become clear that flowering plants can respond to bacterial signalling molecules that alter plant growth and development, representing inter-kingdom interaction^{10,11}. The perception of bacteria by plants is of significant importance in terms of monitoring their surroundings and thus being able to respond accordingly to enhance their chances of survival¹².

A key way in which bacteria communicate with one another is via diffusible quorum sensing (QS) molecules that are used to monitor and respond to population density within a colony or biofilm^{13–19}. One well-characterised subset of QS molecules that affect plants' behaviour are the *N*-acylhomoserine lactones (AHLs)^{11,12,20–24}. AHLs are

¹School of Biosciences, University of Birmingham, Edgbaston, Birmingham, UK. ²University Centre Shrewsbury, Guildhall, Frankwell Quay, Shrewsbury, Shropshire, UK. ³Karlsruhe Institute of Technology, Karlsruhe, Baden-Württemberg, Germany. ⁴School of Life, Health and Chemical Sciences, Open University, Walton Hall, Kents Hill, Milton Keynes, UK. ⁵National Biofilm Innovations Centre, University of Nottingham Biodiscovery Institute, School of Life Sciences, University of Nottingham, University Park, Nottingham, UK. ⁶Institute of Life Sciences, Jiangsu University, Zhenjiang, China. ⁷These authors contributed equally: Amy L. Whitbread, Sarah Needs, Wesal Tanko and Kirsty Jones. *email: Miguel.camara@nottingham.ac.uk; j.c.coates@bham.ac.uk

produced by Gram-negative bacteria²⁵ and are key for the control of multiple gene expression in a coordinated manner within a population^{25–27}.

AHLs vary in their structure in nature with a wide range of acyl chain lengths, from four to eighteen carbons, and level of saturation. Furthermore, substitutions can occur at the third carbon position (C3), enabling the molecule to either be unsubstituted, or to possess a ketone group (oxo, O) or a hydroxyl group (OH). These structural differences contribute to their specific impact on gene expression^{28,29}.

A wide range of Gram-negative plant-associated bacteria produce AHLs and some non-producers are still able to sense and respond to the presence of these molecules using *luxR*-solo AHL receptor proteins^{30,31}. The ability of plants to detect and respond to the presence of AHLs may be a result of their coevolution with AHL-producing bacteria. Perception of AHLs in microbial communities may allow plants to sense increasing bacterial density and then alter the bacterial QS accordingly - this will be evolutionarily advantageous to plants particularly during interactions with pathogenic bacteria³².

Plant responses to AHLs depend on the structure and concentration of the AHL and can promote or inhibit growth^{33,34}. Plant-bacterial interaction often occurs in the rhizosphere where roots in the soil come into contact with AHLs in varying concentrations dependent on local growth of bacteria^{21,35,36}. Flowering plants respond to these bacterial compounds and even absorb them from the surrounding environment³⁷. The role of QS in legume nodule formation seems to vary depending on the combination of plant and bacterium under investigation (reviewed in³⁴).

Certain plant species produce AHL mimics that induce a premature quorum-sensing response in bacteria that serves to protect the plant from pathogens, or aid establishment of symbiotic relationships^{38–42}. Conversely, plants can produce anti-QS molecules and use “quorum quenching” to interfere with bacterial QS signalling mechanisms preventing expression of genes encoding bacterial virulence factors^{43,44}. The exact mechanisms by which plants perceive AHLs is currently unknown, but these molecules can affect the activity of endogenous plant signalling, such as calcium signalling^{45,46}, G-protein signalling^{47,48}, stress signalling and metabolism^{23,49} and hormone signalling²² causing downstream effects on plant growth.

In plants, AHL perception induces a “primed” state, regulating plant immunity¹². Tomato plants (*Solanum lycopersicum*) acquired induced resistance to the pathogenic fungus *Alternaria alternata*, following co-culture with wild-type *Serratia liquefaciens* bacteria, but not in the presence of a mutant *Serratia* strain impaired in AHL production⁵⁰. In the model plant *Arabidopsis thaliana*, application of synthetic AHLs leads to resistance to bacterial and fungal pathogens¹².

AHLs also affect normal plant growth, development and physiology. Addition of AHL to plants causes changes in gene expression^{45,51}, root system development^{11,20–23}, and induction of adventitious rooting structures from stems²⁴. QS systems of plant-growth-promoting bacteria are advantageous for both the bacterium and the host plant as colonisation of the rhizosphere is improved^{52,53}. Diffusion of compounds through the rhizosphere can also affect the composition of bacterial populations at a distance in tomato (*S. lycopersicum*)^{14,54}. Moreover, by-products from AHL degradation can be beneficial: for example, application of homoserine or homoserine lactones (AHL degradation products) to the roots of bean plants increased leaf stomatal conductance, which in turn led to increased availability of mineral nutrients, benefiting both the host plant and rhizosphere-associated bacteria⁵⁵.

Plant-produced compounds, such as strigolactones and alkamides, share structural similarity to the bacteria-generated AHL molecules. Consequently, it is not surprising that QS molecules impose effects on the growth and development of plants, as both alkamides and strigolactones are known to induce a number of morphological responses, including changes in root architecture^{56–58}. An intact homoserine lactone ring structure is not always required for plants to detect AHLs³³.

All plants on land arose from aquatic ancestors: the appearance of plants on land was a key evolutionary transition. Relatively little is known about the effects bacteria have on development in ancient plant lineages⁵⁹. The earliest land plants were small and in close contact with their substrate (and associated microorganisms) over the whole of their anatomy rather than just via their roots. The earliest-diverging lineage of land plants, the spore-bearing mosses, liverworts and hornworts (Bryophytes) play a key role in ecology as carbon sinks in peat bogs and permafrosts⁶⁰ and have been used by humans for their absorptive and medicinal properties for thousands of years^{61–63}.

The microbiome of *Sphagnum* moss harbours diverse bacteria and is substantially different from that of flowering plants with the potential to enable plant- and ecosystem adaptation to climate change^{59,64–66}. The microbiomes of a co-occurring epiphytic moss (*Pterygandrum filiforme*) and its flowering plant host (*Acer pseudoplatanus*) show distinct characteristics⁶⁷. Moreover, different moss species from different habitats possess distinct microbiomes with some overlap in properties and function^{68,69}.

Whether bacterial signalling molecules can directly affect developmental processes in non-flowering plants is largely unknown. A symbiotic bacterium (*Methylobacterium*) from the moss *Funaria hygrometrica* exerted a cytokinin-like effect on moss development, enabling formation of buds, and promoted filament growth via cell division^{70,71}. Evidence from marine seaweeds (macroalgae), which share a common ancestor with land plants, demonstrates that AHLs from algal-associated bacteria can affect algal growth, development and cell behaviour^{72–75}. Motile, reproductive spores of the green seaweed *Ulva* sense and are attracted to AHLs produced by bacterial biofilms, which influence spore settlement and swimming rate^{74–76} and cause activation of calcium signaling in the spores⁷⁵. AHLs from *Shewanella* and *Sulfitobacter* inhibit early development of the green seaweed *Ulva* from spores and synthetic *N*-dodecanoyl-L-homoserine lactone (C12-HSL) inhibits early *Ulva* development at concentrations above 5 μ M⁷². AHLs (*N*-butanoyl-L-homoserine lactone (C4-HSL) and *N*-hexanoyl-L-homoserine lactone (C6-HSL)) from *Shewanella* promote reproductive carpospore release in the red seaweed *Gracilaria dura* at micromolar concentrations⁷³.

We therefore hypothesised that AHLs might affect development in early-diverging land plants. In this paper, we show that synthetic AHLs can promote spore germination in the model moss species *Physcomitrella patens*^{77,78} in a lab-based assay. Moreover, sporophytes from wild isolates of *Physcomitrella patens* are associated with AHL-producing bacteria, suggesting these bacteria may influence spore germination in the environment through the production of AHL signal molecules.

Results

AHLs promote *Physcomitrella* spore germination at sub-micromolar concentrations but inhibit spore germination at concentrations above 1 μM . Previous studies have shown that AHLs at concentrations of 1–10 μM can promote root growth in the model flowering plant *Arabidopsis*^{22,45,47,48}. In algae, AHLs at 2–10 μM can promote spore release⁷³ or reduce the progress of growth and development from spores⁷². We tested the effect of a range of AHLs with different carbon *N*-acyl chain lengths at 0.1 μM and 1 μM concentrations on the spore germination of the model moss *Physcomitrella patens*. All AHLs (C4-HSL to C12-HSL) induce a significantly faster spore germination rate compared to a solvent-only control (Fig. 1). C4-HSL and C6-HSL show a similar promotion of germination at both 0.1 μM and 1 μM concentrations (Fig. 1A,B). C8-HSL appears to have slightly more germination-promoting activity than the shorter chain AHLs and is more potent at 1 μM than 0.1 μM (Fig. 1C). C10-HSL and C12-HSL are the most potent germination-promoting AHLs, being more effective at 0.1 μM than at 1 μM concentration (Fig. 1D,E).

In *Arabidopsis*, 50–100 μM concentrations of AHLs inhibit root growth^{21,45,48} while in the seaweed *Ulva* spore germination and early development is reduced with just 5 μM AHLs⁷². We tested the effects of a range of AHLs at 5 μM on *Physcomitrella* spore germination and found that AHLs could inhibit spore germination (Fig. 2A). The effect appeared strongest with C10-HSL, which also inhibited germination at 10 μM , in a dose-dependent manner (Fig. 2B). Taken together, these data show that AHLs, particularly those with longer chain length, accelerate spore germination when at low ($\leq 1 \mu\text{M}$) concentrations and inhibit spore germination at higher (5–10 μM) concentrations.

Chain length and side group substitution affect the activity of AHLs against *Physcomitrella* spore germination.

To investigate whether changing the side group of the AHL had an effect on biological activity, we assayed the spore-germination-promoting activity of C4–C12 AHLs, namely the *N*-acyl version (as before) and also the 3-oxo (3-O) and 3-hydroxy (3-OH) substituted forms. Our “snapshot” data (Fig. 3A) indicated potential differences in potency between the different side chains, particularly for AHLs with longer carbon chain. To investigate these differences further, we assayed spore germination in the presence of 3-OH and 3-O substitutions of the C10 and C12 HSLs, which consistently through this study showed some of highest activity, over a range of concentrations from 2 nM to 1 μM (summarised in Fig. 3B; data in Supplemental Fig. 1 and 2). The *N*-acyl variants of C10- and C12-HSL showed the greatest spore germination-promoting activity at 2–10 nM (Fig. 3B; Supplemental Fig. 1A; Supplemental Fig. 2A). 3-OH-C10-HSL variant showed greatest spore germination promotion at 10 nM whereas the 3-OH-C12-HSL showed similar spore germination-promotion from 10 nM–1 μM , slightly higher at 1 μM (Fig. 3B; Supplemental Fig. 1B; Supplemental Fig. 2B). The 3-O variants of C10- and C12-HSL showed greatest spore germination-promoting activity at 0.1 μM concentration, indicating somewhat reduced potency compared to the other two types of AHLs (Fig. 3B; Supplemental Fig. 1C; Supplemental Fig. 2C). These data demonstrate that both chain length and side group substitution can affect the biological activity of exogenously-applied synthetic HSLs on *Physcomitrella* spore germination. As seen in⁷⁹ there is variability in control germination rate between different spore batches (e.g. Fig. 1 versus Fig. 3) but this does not affect the trends seen with different treatments.

Sporophytes from wild isolates of *Physcomitrella* are associated with multiple species of bacteria, some of which produce AHLs.

To determine whether the observed effects of synthetic AHLs on *Physcomitrella patens* spore germination in a lab-based assay might have relevance to wild populations found in the environment, sporulating *Physcomitrella* plants were firstly collected from 3 different locations in the UK with a view to determine the bacterial populations associated with them and the ability of these bacteria to produce AHLs. A total of 12 plants were selected from each sampled location and the sporophyte from each plant was isolated to enable isolation of its associated bacteria (a consortium from each sporophyte). Bacterial consortia were obtained from 30 out of 36 sporophytes. Each individual sporophyte’s (assumed mixed) bacterial populations were taken through multiple rounds of streaking to isolate individual strains associated with *Physcomitrella*. To identify each strain, a fragment of the 16S rRNA gene was amplified from genomic DNA and sequenced. Our sampling of bacteria associated with *Physcomitrella* sporophytes identified largely Proteobacteria from the class Gamma-proteobacteria. Bacteria of the genus *Pseudomonas* were found at all 3 sites (at least 5 different species), as was *Stenotrophomonas* (2 species). Serratia (2 species) were isolated from 2 sites and *Acinetobacter*, *Aeromonas* and *Rahnella* were each recovered from a single site. The gram-positive bacteria *Microbacterium* (Actinobacteria) and *Bacillus* (Firmicutes) were each found at a single site (Table 1).

For an initial survey of whether the isolated bacterial consortia from each sporophyte could produce AHLs, consortia were analysed by a mass-spectrometry (LC-MS/MS) approach, which demonstrated that consortia from all three locations could produce AHLs although these were detected to only a limited extent from the Lindley site (Table 2).

To determine whether the individual bacteria isolated from wild *Physcomitrella* could produce detectable AHLs, cultures of the Gram-negative bacterial isolates were subjected to AHL analysis by LC-MS/MS. Just under half of the bacterial isolates from each of Chew Valley and Stocks reservoir produced detectable AHLs, while no AHLs were detected from the bacteria from Lindley. Representatives of *N*-acyl, 3-O and 3-OH from C4 to C10 chain length were detected (Fig. 4). Overall, the most frequently detected AHLs were C6-HSL and 3-O-C8-HSL.

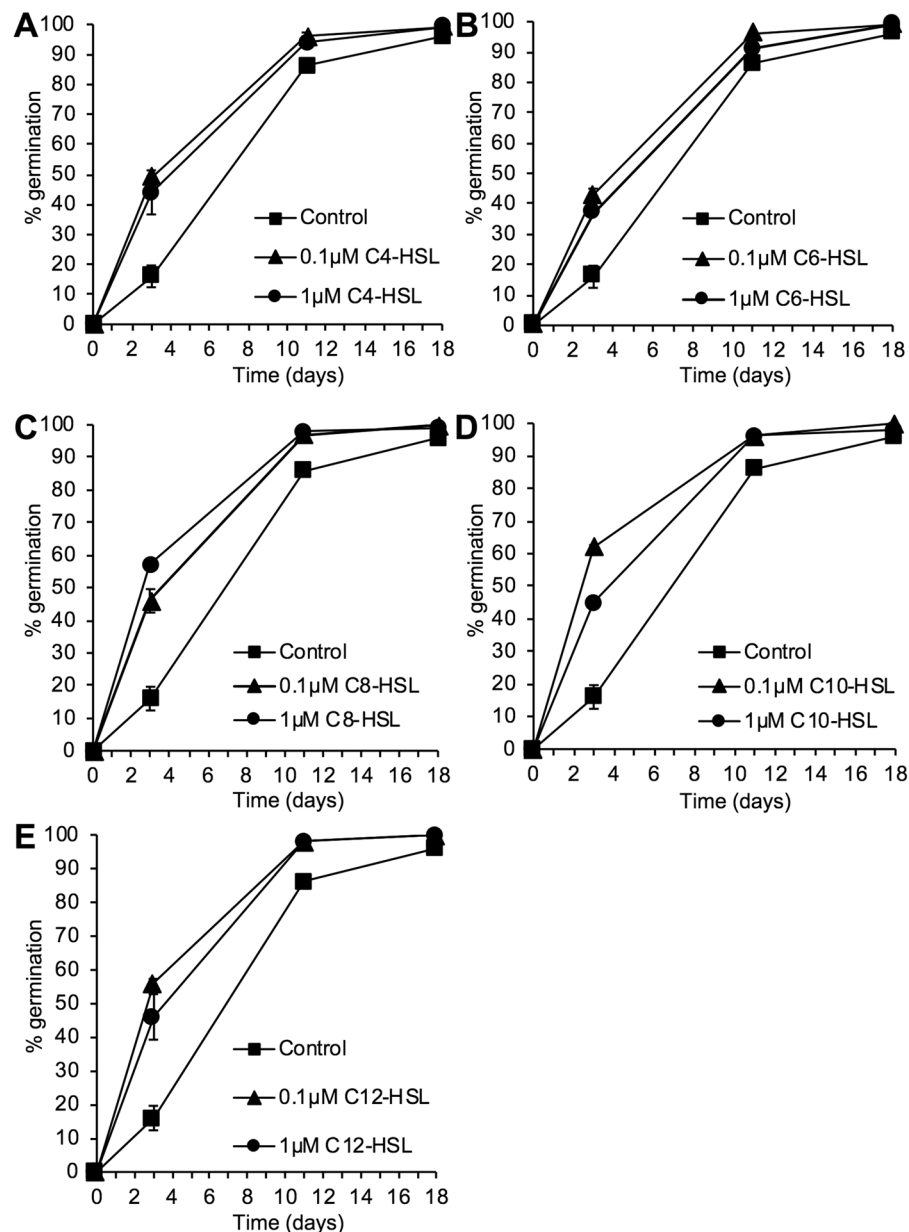


Figure 1. *N*-acyl HSLs can promote *Physcomitrella* spore germination. *P. patens* spores were germinated on media containing 0, 0.1 and 1 μM *N*-acyl HSLs of varying chain lengths (C4–C12). The number of spores germinated were counted as a percentage of total spores on the plate. Both concentrations of *N*-acyl HSLs resulted in a faster rate of germination compared to control spores. **(A)** C4-HSL promotes germination of *P. patens* spores. Z-tests indicated significant differences in germination between treated and untreated spores on days 3 and 11 ($P > |t|$ 0.0002). **(B)** C6-HSL promotes germination of *P. patens* spores. Z tests indicated significant differences in germination between treated and untreated spores on days 3 and 11 ($P > |t|$ 0.0002). Treatment with the lower concentration of 0.1 μM was more effective in promoting germination on days 3 and 11 when compared to 1 μM. **(C)** C8-HSL promotes germination of *P. patens* spores. Z tests indicated significant differences in germination % between treated and untreated spores on days 3, 7 and 11 ($P > |t|$ 0.0002). **(D)** C10-HSL promotes *P. patens* spore germination. Z tests indicated significant differences in germination % between treated and untreated spores on days 3, 7 and 11 ($P > |t|$ 0.0002). Treatment with the lower concentration of 0.1 μM was significantly more effective in promoting germination on days 3 and 7 when compared to 1 μM. **(E)** C12-HSL promotes *P. patens* spore germination. Z tests indicated significant differences in germination % between treated and untreated spores on days 3, 7 and 11 ($P > |t|$ 0.0002). Treatment with the lower concentration of 0.1 μM was significantly more effective in promoting germination on days 3 and 7 when compared to 1 μM. In all experiments, final germination efficiency was not affected with all treatments achieving a final germination of over 95%. Representative of more than 5 biological repeats. Error bars represent \pm SEM.

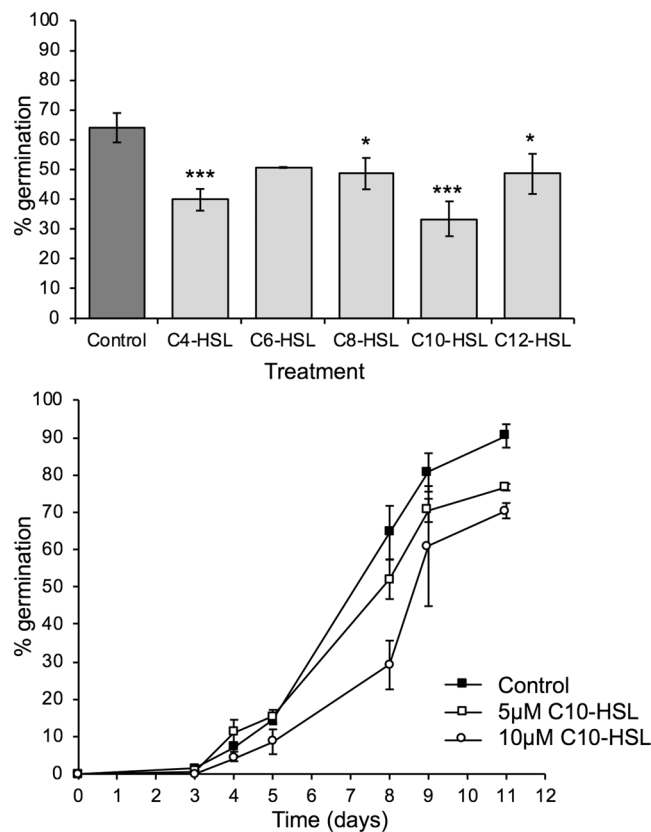


Figure 2. *N*-acyl HSLs inhibit *Physcomitrella* spore germination at concentrations above 1 μM . (A) C4–C12 *N*-acyl HSLs were tested on *P. patens* spores at a concentration of 5 μM (light grey bars) compared to a solvent-matched control (dark grey bar). A snapshot of data at day 4 is shown: all chain lengths reduce germination. Significant differences between control and treatment are seen with a Z-test for C4-HSL ($p = 0.0007$), C8-HSL ($p = 0.0324$), C10-HSL ($p < 0.0002$) and C12-HSL ($p = 0.0324$) but not C6-HSL ($p = 0.0629$). * $p < 0.05$, *** $p < 0.001$. Error bars represent \pm SEM. $n > 700$ spores for each data point. Representative of at least 3 biological repeats. (B) C10-HSL inhibits *P. patens* spore germination in a dose-dependent manner. C10-HSL was tested at 5 μM and 10 μM concentration against a solvent control. Significant differences are seen with a Z-test between control and both 5 μM and 10 μM C10-HSL on day 8, 9 and 11 ($p < 0.0002$); 5 μM and 10 μM C10-HSL are also significantly different from each other on day 8 ($p < 0.0002$), day 9 ($p < 0.0002$) and day 11 ($p = 0.0056$). Error bars represent \pm SEM. $n > 500$ spores for each data point. Representative of 3 biological repeats.

The most frequently detected AHL in bacteria from Chew Valley was 3-OH-C10-HSL, whereas that from Stocks was 3-O-C6-HSL.

Taken together, these data show that some of the bacteria associated with *Physcomitrella* sporophytes from different geographical locations can produce a range of AHLs.

Discussion

Our experiments show for the first time that synthetic AHLs can affect the spore germination of an early diverging land plant, the bryophyte *Physcomitrella patens*, in a lab-based assay. Low ($< 1 \mu\text{M}$) concentrations of AHLs promote spore germination whilst higher concentrations (5–10 μM) inhibit spore germination. In general, AHLs with longer chain length (C8–C12) have a more potent effect than C4–C6 AHLs and side-group substitutions change the potency of germination-promoting activity with 3-O and 3-OH substitutions generally showing a slight reduction in potency.

The inhibitory effect of higher concentrations of AHLs is reminiscent of their effect in the green seaweed *Ulva* where $> 5 \mu\text{M}$ AHLs can inhibit the early development and growth of new plants from zoospores⁷². Higher concentrations (25–125 μM) of long-chain AHLs can also inhibit *Ulva* spore swimming speed to promote settlement with 3-O substitutions showing the greatest inhibition⁷⁴. The effect of sub-micromolar concentrations AHLs was not investigated in these experiments.

In land plants, the effect of AHLs on germination of the desiccation-resistant dispersal units, namely spores (in Bryophytes, Lycophytes and ferns) or seeds (in Gymnosperms and Angiosperms) is not well studied. So far, a single study shows that priming of winter wheat (*Triticum aestivum* L.) seeds with C6-HSL ($\sim 9 \text{ ng AHL per seed}$) improves their germination and subsequent growth, development and biomass production⁸⁰. Thus, a potential role in germination control for AHLs is present across plant- and algal taxa, although whether this is as a result of convergent or divergent evolution is unknown.

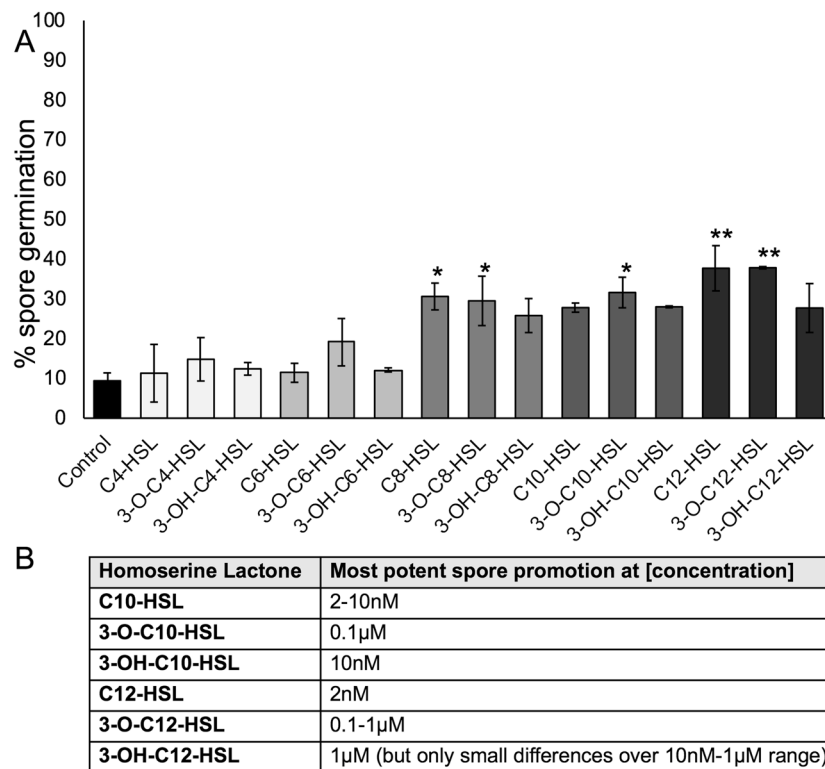


Figure 3. Side chain substitutions affect AHL activity during *Physcomitrella* spore germination. **(A)** 0.1 µM of each HSL (*N*-acyl, 3-O or 3-OH) for C4-C12 chain length was tested against solvent control for effects on spore germination. A “snapshot” of germination on day 3 is shown. Asterisks represent significant (* $p < 0.05$; ** $p < 0.01$) differences between a treatment and solvent control using a Kruskal-Wallis test and a Dunn’s post-hoc test. Generally, longer chain AHLs stimulate germination more, and AHLs without or with 3-O substitutions appear more potent than those with 3-OH substitutions at this concentration. **(B)** Summary of the optimal concentrations of AHLs for promoting *Physcomitrella* spore germination: full data is shown in Supplemental Fig. 1.

AHLs have a range of effects on post-germination development and growth in seed plants. For example, 1–10 µM of 3-O-C6-HSL and 3-O-C8-HSL, and 10 µM C4-HSL, C6-HSL, C8-HSL can increase *Arabidopsis* primary root elongation^{22,45,47,48,51} while > 10 µM of C10-C14 AHLs inhibit primary root growth in *Arabidopsis* seedlings^{21,48}. Moreover C10 and C12 AHLs promote root branching and increases root hair formation at 12–96 µM²¹. Inhibitory effects of AHLs on the *Arabidopsis* root involve changes in cell division and differentiation²¹. This biphasic pattern (growth stimulation of *Arabidopsis* primary root at low concentrations, growth inhibition at higher concentrations) is reminiscent of what we see with *Physcomitrella* spore germination (Figs. 1–3). In general, longer-chain AHLs (C10, C12) have more potent effects, as we saw with *Physcomitrella* spore germination in this paper, although the concentrations required for an effect in *Arabidopsis* are higher (≥ 1 µM) than in *Physcomitrella* (2nM–1 µM). In barley, 10 µM C6-HSL promotes seedling growth³⁵.

Several studies hint at the molecular mechanisms underlying the effects of AHLs on *Arabidopsis* root growth. Transcriptome- and qRT-PCR approaches coupled with mutant studies implicate several transcription factors in the response, including *AtMYB44*⁵¹, in addition to G-protein signalling^{47,48} and calmodulin/calcium signalling^{45,46}. Interestingly, a role for changes in intracellular calcium signalling has also been implicated in *Ulva* spore settlement, which is also affected by AHLs⁸¹.

There is considerable overlap between the bacteria we isolated from *Physcomitrella* sporophytes and the bacteria found in associated with the peat moss *Sphagnum*⁵⁹ in which *Pseudomonas*, *Rahnella*, *Serratia*, *Stenotrophomonas* and *Microbacterium* are all present but *Aeromonas* and *Acinetobacter* were not detected. No *Bacillus* was detected in *Sphagnum*, although *Paenibacillus* (Firmicutes) was, along with additional Beta-proteobacteria, Bacteroidetes, and Actinobacteria⁵⁹.

The bacteria isolated from mosses are generally different from those isolated from *Ulva*: predominantly Alpha-proteobacteria and Bacteroidetes, although *Microbacterium* has been isolated from all three species^{82–84}. Most of the genera of Gamma-proteobacteria isolated (*Pseudomonas*, *Serratia*, *Acinetobacter*, *Aeromonas*) are AHL producers^{26,85–88}. However, it is important to note that only a small fraction (<1%) of all bacteria that exist in a particular environment can be grown in the lab on standard growth media⁸⁹ so there may be many other AHL-producing bacteria associated with *Physcomitrella* in the wild.

Single-species AHL analysis showed that, as expected, many of the *Pseudomonas* isolates, most of the *Serratia* isolates and one of the *Aeromonas* isolates produced AHLs (Fig. 4). Moreover, an isolate of *Stenotrophomonas* from each of the Chew Valley and Stocks reservoir sites also produced AHLs: this genus has not previously been

Bacterial Isolate	GenBank accession(s) of closest hit(s)	% match	Identification	GenBank accession
Chew Valley Lake				
CV1.1.1	CP017964.1	100	<i>Pseudomonas protegens</i>	MH379708
CV2.1.2	CP013913.1	>99	<i>Serratia fonticola</i>	MH379709
CV2.2.1	MF872588.1; KX982223.1; AB859734.1; JF742664.1; AY800383.1	100	<i>Acinetobacter sp.</i>	MH379710
CV2.2.2W	CP013913.1	>99	<i>Serratia fonticola</i>	MH379711
CV2.2.2Y	CP025262.1	100	<i>Pseudomonas sp.</i>	MH379712
CV2.3.2	CP013913.1	>99	<i>Serratia fonticola</i>	MH379713
CV3.3.2Y	LT616972.1; FN678353.1	100	<i>Pseudomonas baetica</i>	MH379714
CV4.1B	KT825741.1; KT767824.1; KC139422.1	100	<i>Pseudomonas sp.</i>	MH379715
CV4.1.2AW	CP011354.1	>99	<i>Serratia fonticola</i>	MH379716
CV4.2.2B	CP013913.1	100	<i>Serratia fonticola</i>	MH379717
CV5.2.1	CP023956.1, CP013913.1, CP011254.1	100	<i>Serratia fonticola</i>	MH379718
CV6.3	CP013184.1; CP017964.1; CP022097.2	100	<i>Pseudomonas protegens</i>	MH379719
CV7.2	CP011254.1	100	<i>Serratia fonticola</i>	MH379720
CV8.1	JQ086574.1	>99	<i>Pseudomonas putida</i>	MH379721
CV8.2	JQ086574.1	>99	<i>Pseudomonas putida</i>	MH379722
CV8.4	CP031338.1; CP031422.1	100	<i>Microbacterium oxydans</i>	MN073508
CV9.1	FN678353.1	100	<i>Pseudomonas baetica</i>	MH379723
CV9.2	CP023272.1	100	<i>Pseudomonas lurida</i>	MH379724
CV10.1	KT932956.1	>99	<i>Stenotrophomonas maltophilia</i>	MH379725
CV10.2	CP022097.2; CP017964.1; AP014522.1; CP003190.1;	100	<i>Pseudomonas sp.</i>	MH379726
CV10.3	KT 932956.1; CP023271.1	100	<i>Stenotrophomonas maltophilia</i>	MH379727
CV10.4	CP013913.1, CP011254.1	>99	<i>Serratia fonticola</i>	MH379728
CV11.1	CP028568.1	100	<i>Aeromonas hydrophila</i>	MH379729
CV11.2	CP026228.1	>99	<i>Aeromonas sp.</i>	MH379730
CV11.3	KX871891.1	>99	<i>Acinetobacter guillouiae</i>	MH379731
CV12.1	CP022097.2; CP017964.1; AP014522.1; CP003190.1;	100	<i>Pseudomonas sp.</i>	MH379732
CV12.2	CP023271.1	100	<i>Stenotrophomonas sp.</i>	MH379733
Stocks Reservoir				
S2.1	KT695833.1; KJ601751.1; AM419154.2; AB680969.1	100	<i>Pseudomonas sp.</i>	MH379734
S3.1	MG269607.1; KY457749.1; KT695833.1; KT767690.1	199	<i>Pseudomonas sp.</i>	MH379735
S5.1	KJ601736.1	>99	<i>Pseudomonas sp.</i>	MH379736
S6.1.1	MG269607.1; KY457749.1; KT695833.1; KT767690.1	100	<i>Pseudomonas sp.</i>	MH379737
S8.1	KC951918.1	>99	<i>Serratia grimesii</i>	MH379738
S8.2	MG461471.1	100	<i>Pseudomonas fluorescens</i>	MH379739
S9.1	MG461471.1; HE603509.1; HE603507.1; GU784939.1; NR126220.1	>99	<i>Pseudomonas sp.</i>	MH379740
S9.2	KC951918.1	>99	<i>Serratia grimesii</i>	MH379741
S10.1	MG461471.1; NR126220.1	>99	<i>Pseudomonas sp.</i>	MH379742
S10.2	CP007597.1	>99	<i>Stenotrophomonas rhizophila</i>	MH379743
S11.1	LT907842.1	100	<i>Pseudomonas fluorescens</i>	MH379744
S11.2	MG461471.1; NR126220.1; HE603509.1; HE603507.1; GU784939.1;	>99	<i>Pseudomonas sp.</i>	MH379745
S12.1	KY606575.1	>99	<i>Rahnella aquatilis</i>	MH379746
S12.2	CP003403.1	>99	<i>Rahnella aquatilis</i>	MH379747
Lindley				
L1B	KP267838.1; NR041952.1	>99	<i>Pseudomonas abietaniphila</i>	MH379748
L3.1	MG269614.1; MG738244.1; MG571730.1	>99	<i>Pseudomonas sp.</i>	MH379749
L6.1	KX588595.1; KT767887.1; KT767804.1; KR085861.1; KR085860.1; KR085772.1; JQ995152.1; KF147119.1; JF312957.1	100	<i>Pseudomonas sp.</i>	MH379750
L6.2	KY800458.1; CP007597.1	>99	<i>Stenotrophomonas rhizophila</i>	MH379751
L6.3	KX588595.1; KT767887.1; KT767804.1; KR085861.1; KR085860.1; KR085772.1; JQ995152.1; KF147119.1; JF312957.1	100	<i>Pseudomonas sp.</i>	MH379752
L10.1	KY800458.1; CP007597.1	>99	<i>Stenotrophomonas rhizophila</i>	MH379753
L11.1	KP267838.1	>99	<i>Pseudomonas abietaniphila</i>	MH379754
Continued				

Bacterial Isolate	GenBank accession(s) of closest hit(s)	% match	Identification	GenBank accession
L11.2	CP020383.1	>99	<i>Bacillus cereus</i>	MH379755
L12.1	MG269607.1; KY457749.1; KT695833.1; KM221362.1; KT767690.1	100	<i>Pseudomonas sp.</i>	MH379756
L12.3	KR153186.1; JN392005.1; KT150204.1; KC876035.1; KC709812.1; JN411483.1; HQ197382.1; FJ946999.1	100	<i>Bacillus cereus</i>	MH379757

Table 1. Identification of bacterial isolates from Chew Valley, Stocks Reservoir and Lindley using 16S rDNA sequencing. Closest hits by BLAST, percentage identity and identification are shown for each isolate, along with the newly assigned GenBank accession number for each isolate.

	Chew Valley (11 sporophytes' consortia)	Stocks (11 sporophytes' consortia)	Lindley (8 sporophytes' consortia)
C4-HSL	2	0	0
C6-HSL	0	7	0
C8-HSL	8	1	0
C10-HSL	0	0	0
C12-HSL	0	0	0
C14-HSL	0	0	0
3-O-C4-HSL	0	0	0
3-O-C6-HSL	0	7	0
3-O-C8-HSL	1	1	0
3-O-C10-HSL	0	0	0
3-O-C12-HSL	0	0	0
3-O-C14-HSL	0	1	0
3-OH-C4-HSL	0	0	0
3-OH-C6-HSL	0	2	1
3-OH-C8-HSL	7	1	1
3-OH-C10-HSL	8	1	1
3-OH-C12-HSL	0	0	0
3-OH-C14-HSL	0	0	0

Table 2. Frequency of AHL detection in bacterial consortia. The number of times a particular AHL was detected in the consortium from a single isolated sporophyte (out of the total number of sporophytes from each location) is recorded.

found to make AHLs as it normally makes DSF-type quorum sensing molecules⁹⁰ which also induce growth promoting traits on plants⁹¹. Two *Pseudomonas fluorescens* isolates from the Stocks reservoir showed AHL production even though, to our knowledge, no strains from this species have been reported before to produce these QS molecules. Unexpectedly, none of the individual isolates from Lindley produced AHLs (Fig. 4) despite several attempts, suggesting that they have either lost the ability to produce these molecules or, under the *in vitro* growth conditions used, they only make AHLs below the lower limit of detection for the LC-MS/MS system used.

In summary, we have characterised for the first time the effect of bacterial quorum sensing molecules, AHLs, on the development of a non-flowering land plant, the moss *Physcomitrella patens*. AHLs promote *Physcomitrella* spore germination at sub-micromolar concentrations, but inhibit germination at higher concentrations, in a biphasic pattern reminiscent of the AHL effect on root growth in flowering plants. We have shown that a range of bacteria, some of which produce AHLs, are associated with *Physcomitrella* sporophytes isolated from the wild. Future research could include a metagenomic analysis to identify all bacteria (including those that are uncultivable) associated with *Physcomitrella*, work with mutant strains of bacteria deficient in AHL production, analysis of calcium signalling in moss spores upon AHL application, isolation of moss mutant strains that cannot respond to AHLs, or transcriptomic/proteomic analysis of moss spores treated with AHLs.

Materials and Methods

Moss spore germination assays. Germination assays were carried out as in⁹². Briefly, spores from at least 3 age-matched sporophytes were used within each assay with three sporophytes' worth of spores used for every 10 Petri dishes (9 cm diameter). Sporophytes were bleached in groups of two to three in 1 ml 25% Parozone™ (Jeyes Group, Thetford, UK) for 10 min and then washed three times in 1 ml sterile distilled water (10 min each) in a sterile flow cabinet. The sporophytes were then crushed in 100–200 µl of sterile water to release the spores. Spores were diluted down in sufficient sterile distilled water to allow plating of 500 µl of spore solution per Petri dish. Spores were plated on cellophane-overlaid BCD moss growth medium (1 mM MgSO₄, 1.84 mM KH₂PO₄, 10 mM KNO₃, 45 µM FeSO₄·7H₂O, plus 1:1000 Hoagland's A-Z Trace Element Solution, 0.8% agar), supplemented with 5 mM CaCl₂ and 5 mM ammonium tartrate. Relevant AHL (Supplemental Table 1) or solvent (DMSO) controls

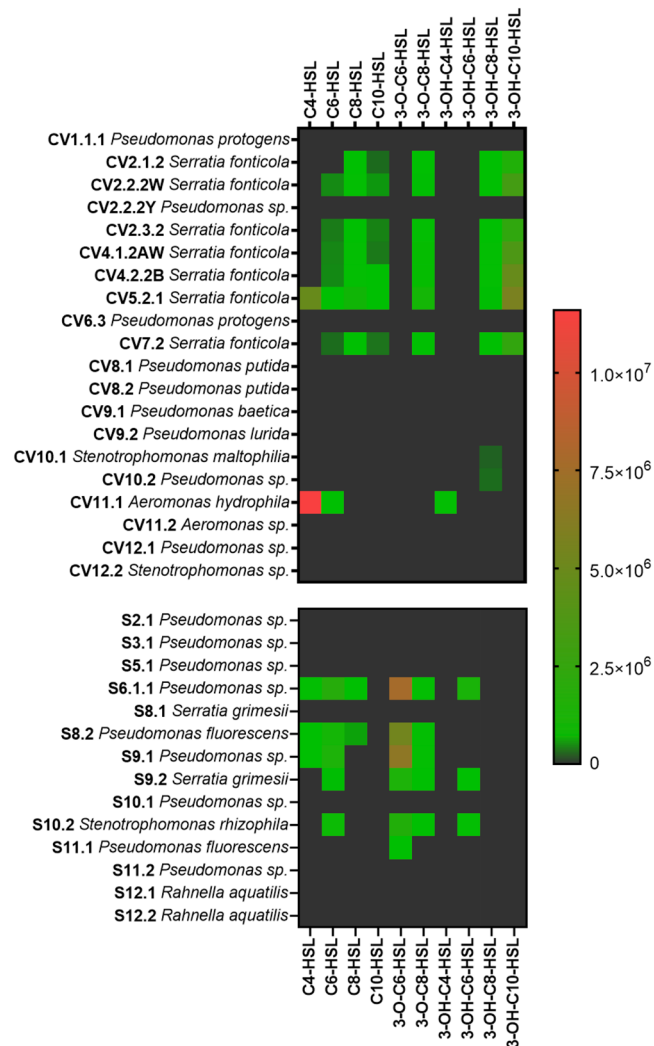


Figure 4. AHLs detected in bacterial isolates from Chew Valley and Stocks Reservoir. No AHLs were detected from individual Lindley isolates for which we obtained high quality sequence. Numerical values on the legend scale are of peak area for detected analytes. A positive detection of an AHL was considered as a chromatographic peak that has a signal to noise ratio of at least 5, displaying a peak retention time that matched that of authentic AHL synthetic standards.

were added to the molten agar medium at $\sim 50^\circ\text{C}$ just before pouring the plates. AHLs were synthesized at the University of Nottingham following standard methods^{93,94}. Cellophane discs (A.A. Packaging Ltd, Preston, UK) were autoclaved wet and individually between sheets of filter paper for 15 min at 121°C , before use. Each data point included data from more than one plate and a minimum of 500 spores.

Isolation of wild *Physcomitrella patens*. *Physcomitrella patens* growing wild in the UK was isolated from 3 sites: Chew Valley Lake (Somerset; ST5814 6053), Stocks Reservoir (Yorkshire; SD742562) and Lindley (Yorkshire; 44/217414). A small area of moss containing ~ 40 individual sporulating plants each harbouring a single sporophyte was collected, and kept moist during transport to the lab, where samples were refrigerated prior to sporophyte harvesting.

Isolation and purification of bacteria. Initially, 12 sporophytes from each location were placed on individual Luria broth (LB)-agar plates and bacteria were allowed to grow out from the sporophyte for 2 days at 28°C in the dark (lower temperatures favoured growth of fungal contamination). The majority of sporophytes were associated with bacteria that could be grown on LB-agar, giving rise to bacterial consortia. These consortia were further purified by taking them through 3–4 rounds of streaking (giving rise to multiple single colonies) as appropriate, growing on LB-agar at 28°C overnight to obtain multiple pure bacterial isolates (identifiable by morphology and colour) for gDNA isolation, sequence identification and AHL detection. Stock plates for each strain were generated from a single colony and colonies from these plates were inoculated into liquid culture to make permanent glycerol stocks in 25% glycerol, 75% LB.

Bacterial identification. Bacterial isolates were identified to genus-, or where possible species-level. Bacterial cultures were grown in LB from single colonies and genomic DNA was extracted using a Qiagen Blood and Tissue DNeasy kit (Qiagen, Hilden, Germany) following the manufacturer's instructions. Partial 16S rDNA fragments (~2 kb) were amplified from 10–30 ng of genomic DNA by PCR using the forward primer 27 F (AGA GTT TGA TCC TGG CTC AG) and reverse primer 1522 R (AAG GAG GTG ATC CAG CCG CA). PCR was carried out using Velocity proofreading DNA polymerase (Bioline) according to manufacturer's instructions. The PCR cycling conditions were a denaturation of 94 °C for 2 min followed by 30 cycles of 94 °C for 30 sec, 58 °C for 30 sec and 72 °C for 1 min, then a final extension of 72 °C for 5 min. PCR products were purified using a GeneJET PCR purification kit (Thermo Fisher) and were sequenced using both the forward and reverse primers via capillary sequencing on an ABI3730 machine (Applied BioSystems). Raw sequence reads viewed in SnapGene version 1.4 and were trimmed and refined by eye from the peak trace where necessary. Where possible, forward and reverse sequences were aligned and combined to generate a single consensus sequence. Sequences were analysed by BLASTN⁹⁵ and the closest matches recorded.

AHL analysis of bacteria. Bacterial cultures were grown in 5 ml of LB for 24 hr at 30 °C with shaking at 200 rpm. For each sample, 1 ml of filter sterilized supernatant was spiked with 5 µl of a 10 µM solution of a deuterated AHL internal standard (d9-C5-AHL in MeOH). After solvent extraction (x3) with 0.5 ml aliquots of acidified ethyl acetate (0.1% (v/v) AcOH in EtOAc), combined extracts were dried under vacuum and stored at –20 °C prior to analysis. Dried samples were re-dissolved in 50 µl of MeOH and 5.0 µl of each sample injected for analysis.

For the analysis by LC-MS/MS, chromatography was achieved using a Shimadzu series 10AD LC system. The LC column, maintained at 40 °C, was a Phenomenex Gemini C18 (3.0 µm, 100 × 3.0 mm). Mobile phases A and B were 0.1% (v/v) formic acid in water and methanol respectively. The flow rate throughout the chromatographic separation was 450 µL/min. The binary gradient initially began at 10% B for 1.0 min, increased linearly to 50% B over 0.5 min, then to 99% B over 4.0 min. This composition remained for 1.5 min, decreased to 10% B over 0.1 min, and stayed at this composition for a 2.9 min period of re-equilibration.

For the MS detection of eluting AHLs, an Applied Biosystems Qtrap 4000 hybrid triple-quadrupole linear ion trap mass spectrometer equipped with an electrospray ionisation (ESI) interface was used. Analysis was conducted with the MS operating in positive electrospray (+ES) multiple reaction monitoring (MRM) mode, screening the LC eluent for specific unsubstituted, 3-O and 3-OH AHLs with even numbered acyl chain length from 4–14 carbons long, and the deuterated internal standard, comparing the retention time of detected analytes with authentic synthetic standards.

Data availability

All sequence data generated in this study has been deposited at GenBank and the accession numbers are given in Table 1. The raw data supporting the conclusions of the germination assays and AHL quantification will be made available by the authors, without undue reservation, to any qualified researcher.

Received: 11 November 2019; Accepted: 17 January 2020;

Published online: 13 February 2020

References

- Oldroyd, G. E. D. Speak, friend, and enter: Signalling systems that promote beneficial symbiotic associations in plants. *Nat. Rev. Microbiol.* **11**, 252–263 (2013).
- Mendes, R., Garbeva, P. & Raaijmakers, J. M. The rhizosphere microbiome: Significance of plant beneficial, plant pathogenic, and human pathogenic microorganisms. *FEMS Microbiol. Rev.* **37**, 634–663 (2013).
- Ortiz-Castro, R., Contreras-Cornejo, H. A., Macías-Rodríguez, L. & López-Bucio, J. The role of microbial signals in plant growth and development. *Plant Signal. Behav.* **4**, 701–712 (2009).
- Humphreys, C. P. *et al.* Mutualistic mycorrhiza-like symbiosis in the most ancient group of land plants. *Nat. Commun.* **1**, 103 (2010).
- Field, K. J. *et al.* First evidence of mutualism between ancient plant lineages (Haplomitriopsida liverworts) and Mucoromycotina fungi and its response to simulated Palaeozoic changes in atmospheric CO₂. *New Phytol.* **205**, 743–756 (2015).
- Buhian, W. P. & Bensmihen, S. Mini-review: nod factor regulation of phytohormone signaling and homeostasis during rhizobia-legume symbiosis. *Front. Plant Sci.* **9** (2018).
- Svistoonoff, S., Hocher, V. & Gherbi, H. Actinorhizal root nodule symbioses: What is signalling telling on the origins of nodulation? *Curr. Opin. Plant Biol.* **20**, 11–18 (2014).
- Hocher, V. *et al.* Signalling in actinorhizal root nodule symbioses. *Antonie van Leeuwenhoek, Int. J. Gen. Mol. Microbiol.* **112**, 23–29 (2019).
- Backer, R. *et al.* Plant growth-promoting rhizobacteria: Context, mechanisms of action, and roadmap to commercialization of biostimulants for sustainable agriculture. *Front. Plant Sci.* **9**, 1–16 (2018).
- Hartmann, A. & Schikora, A. Quorum Sensing of Bacteria and Trans-Kingdom Interactions of N-Acyl Homoserine Lactones with Eukaryotes. *J. Chem. Ecol.* **38**, 704–713 (2012).
- Schikora, A., Schenk, S. T. & Hartmann, A. Beneficial effects of bacteria-plant communication based on quorum sensing molecules of the N-acyl homoserine lactone group. *Plant Mol. Biol.* **90**, 605–612 (2016).
- Schenk, S. T. *et al.* N-acyl-homoserine lactone primes plants for cell wall reinforcement and induces resistance to bacterial pathogens via the salicylic acid/oxylipin pathway. *Plant Cell* **26**, 2708–2723 (2014).
- Cha, C., Gao, P., Chen, Y. C., Shaw, P. D. & Farrand, S. K. Production of acyl-homoserine lactone quorum-sensing signals by gram-negative plant-associated bacteria. *Mol. Plant-Microbe Interact.* **11**, 1119–1129 (1998).
- Pierson, L., Wood, D. & Beck von Bodman, S. Quorum sensing in plant-associated bacteria. In *Cell-Cell Signalling* (eds. Dunney, G. & Winans, S.) 101–116 (American Society for Microbiology Press, 1999).
- Loh, J., Pierson, E. A., Pierson, L. S., Stacey, G. & Chatterjee, A. Quorum sensing in plant-associated bacteria. *Curr. Opin. Plant Biol.* **5**, 285–90 (2002).
- Whitehead, N. & Barnard, A. Quorum-sensing in Gram-negative bacteria. *FEMS Microbiol.* **25**, 365–404 (2001).
- Von Bodman, S. B., Bauer, W. D. & Coplin, D. L. Quorum sensing in plant-pathogenic bacteria. *Annu Rev Phytopathol* **41**, 455–82 (2003).

18. Ramey, B. E., Koutsoudis, M. & Bodman, S. B. Von & Fuqua, C. Biofilm formation in plant-microbe associations. *Curr. Opin. Microbiol.* **7**, 602–9 (2004).
19. Whiteley, M., Diggle, S. P. & Greenberg, E. P. Progress in and promise of bacterial quorum sensing research. *Nature* **551**, 313–20 (2017).
20. Mathesius, U. *et al.* Extensive and specific responses of a eukaryote to bacterial quorum-sensing signals. *Proc. Natl. Acad. Sci. USA* **100**, 1444–1449 (2003).
21. Ortiz-Castro, R., Martínez-Trujillo, M. & López-Bucio, J. N-acyl-L-homoserine lactones: A class of bacterial quorum-sensing signals alter post-embryonic root development in *Arabidopsis thaliana*. *Plant, Cell Environ.* **31**, 1497–1509 (2008).
22. Von Rad, U. *et al.* Response of *Arabidopsis thaliana* to N-hexanoyl-DL-homoserine-lactone, a bacterial quorum sensing molecule produced in the rhizosphere. *Planta* **229**, 73–85 (2008).
23. Schikora, A. *et al.* N-acyl-homoserine lactone confers resistance toward biotrophic and hemibiotrophic pathogens via altered activation of AtMPK6. *Plant Physiol.* **157**, 1407–18 (2011).
24. Bai, X., Todd, C. D., Desikan, R., Yang, Y. & Hu, X. N-3-oxo-decanoyl-l-homoserine-lactone activates auxin-induced adventitious root formation via hydrogen peroxide- and nitric oxide-dependent cyclic GMP signaling in mung bean. *Plant Physiol.* **158**, 725–736 (2012).
25. Williams, P., Winzer, K., Chan, W. C. & Cámara, M. Look who's talking: Communication and quorum sensing in the bacterial world. *Philos. Trans. R. Soc. B. Biol. Sci.* **362**, 1119–1134 (2007).
26. Williams, P. & Cámara, M. Quorum sensing and environmental adaptation in *Pseudomonas aeruginosa*: a tale of regulatory networks and multifunctional signal molecules. *Curr. Opin. Microbiol.* **12**, 182–191 (2009).
27. González, J. F. & Venturi, V. A novel widespread interkingdom signaling circuit. *Trends Plant Sci.* **18**, 167–174 (2013).
28. Scott, R. A. *et al.* Long- and short-chain plant-produced bacterial N-acyl-homoserine lactones become components of phyllosphere, rhizosphere, and soil. *Mol. Plant-Microbe Interact.* **19**, 227–39 (2006).
29. Churchill, M. E. A. & Chen, L. Structural basis of acyl-homoserine lactone-dependent signaling. *Chem. Rev.* **111**, 68–85 (2011).
30. Qian, G., Xu, F., Venturi, V., Du, L. & Liu, F. Roles of a solo LuxR in the biological control agent *Lysobacter enzymogenes* strain OH11. *Phytopathology* **104**, 224–31 (2014).
31. Hudaiberdiev, S. *et al.* Census of solo LuxR genes in prokaryotic genomes. *Front. Cell. Infect. Microbiol.* **5**, 20 (2015).
32. Rowe, S. L., Norman, J. S. & Friesen, M. L. Coercion in the evolution of plant-microbe communication: A perspective. *Mol. Plant-Microbe Interact.* **31**, 789–794 (2018).
33. Palmer, A. G., Senechal, A. C., Mukherjee, A., Ané, J. M. & Blackwell, H. E. Plant responses to bacterial N-acyl l-homoserine lactones are dependent on enzymatic degradation to l-homoserine. *ACS Chem. Biol.* **9**, 1834–1845 (2014).
34. Calatrava-Morales, N., McIntosh, M. & Soto, M. J. Regulation mediated by N-acyl homoserine lactone quorum sensing signals in the rhizobium-legume symbiosis. *Genes (Basel)* **9**, 263 (2018).
35. Klein, I., Von Rad, U. & Durner, J. Homoserine lactones: Do plants really listen to bacterial talk? *Plant Signal. Behav.* **4**, 50–51 (2009).
36. Zarkani, A. A. *et al.* Homoserine lactones influence the reaction of plants to rhizobia. *Int. J. Mol. Sci.* **14**, 17122–17146 (2013).
37. Sieper, T. *et al.* N-acyl-homoserine lactone uptake and systemic transport in barley rest upon active parts of the plant. *New Phytol.* **201**, 545–555 (2014).
38. Gao, M., Teplitski, M., Robinson, J. B. & Bauer, W. D. Production of substances by *Medicago truncatula* that affect bacterial quorum sensing. *Mol. Plant-Microbe Interact.* **16**, 827–834 (2003).
39. Bauer, W. D. & Mathesius, U. Plant responses to bacterial quorum sensing signals. *Curr. Opin. Plant Biol.* **7**, 429–433 (2004).
40. Pérez-Montaño, F. *et al.* Rice and bean AHL-mimic quorum-sensing signals specifically interfere with the capacity to form biofilms by plant-associated bacteria. *Res. Microbiol.* **164**, 749–760 (2013).
41. Corral-Lugo, A., Daddaoua, A., Ortega, A., Espinosa-Urgel, M. & Krell, T. Rosmarinic acid is a homoserine lactone mimic produced by plants that activates a bacterial quorum-sensing regulator. *Sci. Signal.* **9**, ra1 (2016).
42. Nievas, F., Vilchez, L., Giordano, W. & Bogino, P. *Arachis hypogaea* L. produces mimic and inhibitory quorum sensing like molecules. *Antonie van Leeuwenhoek, Int. J. Gen. Mol. Microbiol.* **110**, 891–902 (2017).
43. Manefield, M. *et al.* Halogenated furanones inhibit quorum sensing through accelerated LuxR turnover. *Microbiology* **148**, 1119–27 (2002).
44. Koh, C. L. *et al.* Plant-derived natural products as sources of anti-quorum sensing compounds. *Sensors (Switzerland)* **13**, 6217–6228 (2013).
45. Zhao, Q. *et al.* Involvement of calmodulin in regulation of primary root elongation by N-3-oxo-octanoyl homoserine lactone in *Arabidopsis thaliana*. *Front. Plant Sci.* **5**, 807 (2015).
46. Song, S., Jia, Z., Xu, J., Zhang, Z. & Bian, Z. N-butyl-L-homoserine lactone, a bacterial quorum-sensing signaling molecule, induces intracellular calcium elevation in *Arabidopsis* root cells. *Biochem. Biophys. Res. Commun.* **414**, 355–360 (2011).
47. Jin, G. *et al.* Two G-protein-coupled-receptor candidates, Cand2 and Cand7, are involved in *Arabidopsis* root growth mediated by the bacterial quorum-sensing signals N-acyl-homoserine lactones. *Biochem. Biophys. Res. Commun.* **417**, 991–995 (2012).
48. Liu, F., Bian, Z., Jia, Z., Zhao, Q. & Song, S. The GCR1 and GPA1 participate in promotion of *Arabidopsis* primary root elongation induced by N-Acyl-homoserine lactones, the bacterial quorum-sensing signals. *Mol. Plant-Microbe Interact.* **25**, 677–683 (2012).
49. Miao, C., Liu, F., Zhao, Q., Jia, Z. & Song, S. A proteomic analysis of *Arabidopsis thaliana* seedling responses to 3-oxo-octanoyl-homoserine lactone, a bacterial quorum-sensing signal. *Biochem. Biophys. Res. Commun.* **427**, 293–298 (2012).
50. Schuhegger, R. *et al.* Induction of systemic resistance in tomato by N-acyl-L-homoserine lactone-producing rhizosphere bacteria. *Plant, Cell Environ.* **29**, 909–918 (2006).
51. Zhao, Q. *et al.* AtMYB44 positively regulates the enhanced elongation of primary roots Induced by N-3-Oxo-Hexanoyl-homoserine lactone in *Arabidopsis thaliana*. *Mol. Plant-Microbe Interact.* **29**, 774–785 (2016).
52. Lugtenberg, B. J. J., Dekkers, L. & Bloemberg, G. V. Molecular determinants of rhizosphere colonization by *Pseudomonas*. *Annu. Rev. Phytopathol.* **39**, 461–90 (2001).
53. Savka, M. A., Dessaux, Y., Oger, P. & Rossbach, S. Engineering bacterial competitiveness and persistence in the phytosphere. *Mol. Plant-Microbe Interact.* **15**, 866–74 (2002).
54. Steidle, A. *et al.* Visualization of N-Acylhomoserine Lactone-Mediated Cell-Cell Communication between Bacteria Colonizing the Tomato Rhizosphere. *Appl. Environ. Microbiol.* **67**, 5761–5770 (2001).
55. Joseph, C. M. & Phillips, D. A. Metabolites from soil bacteria affect plant water relations. *Plant Physiol. Biochem.* **41**, 189–192 (2003).
56. López-Bucio, J., Acevedo-Hernández, G., Ramírez-Chávez, E., Molina-Torres, J. & Herrera-Estrella, L. Novel signals for plant development. *Curr. Opin. Plant Biol.* **9**, 523–529 (2006).
57. Koltai, H. & Kapulnik, Y. Unveiling signaling events in root responses to strigolactone. *Mol. Plant.* <https://doi.org/10.1093/mp/sst057> (2013).
58. Ruyter-Spira, C. & Bouwmeester, H. Strigolactones affect development in primitive plants. The missing link between plants and arbuscular mycorrhizal fungi? *New Phytologist*, <https://doi.org/10.1111/j.1469-8137.2012.04261.x> (2012).
59. Kostka, J. E. *et al.* The Sphagnum microbiome: New insights from an ancient plant lineage. *New Phytol.* **211**, 57–64 (2016).
60. Glime, J. Nutrient Relations: CO₂. In *Bryophyte Ecology: Volume 1, Physiological Ecology* (Ebook sponsored by Michigan Technological University and the International Association of Bryologists., 2017).
61. Glime, J. Household and Personal Uses. In *Bryophyte Ecology: Volume 5, Uses* (Ebook sponsored by Michigan Technological University and the International Association of Bryologists., 2017).

62. Glime, J. Medical Uses: Medical Conditions. In *Bryophyte Ecology: Volume 5, Uses* (Ebook sponsored by Michigan Technological University and the International Association of Bryologists., 2017).
63. Glime, J. Medical Uses: Biologically Active Substances. In *Bryophyte Ecology: Volume 5, Uses* (Ebook sponsored by Michigan Technological University and the International Association of Bryologists, 2017).
64. Bragina, A. *et al.* The Sphagnum microbiome supports bog ecosystem functioning under extreme conditions. *Mol. Ecol.* **23**, 4498–4510 (2014).
65. Weston, D. J. *et al.* The Sphagnum Project: enabling ecological and evolutionary insights through a genus-level sequencing project. *New Phytol.* **217**, 16–25 (2018).
66. Weston, D. J. *et al.* Sphagnum physiology in the context of changing climate: Emergent influences of genomics, modelling and host-microbiome interactions on understanding ecosystem function. *Plant, Cell Environ.* **38**, 1737–1751 (2015).
67. Aschenbrenner, I. A., Cernava, T., Erlacher, A., Berg, G. & Grube, M. Differential sharing and distinct co-occurrence networks among spatially close bacterial microbiota of bark, mosses and lichens. *Mol. Ecol.* **26**, 2826–2838 (2017).
68. Opelt, K. & Berg, G. Diversity and antagonistic potential of bacteria associated with bryophytes from nutrient-poor habitats of the Baltic sea coast. *Appl. Environ. Microbiol.* **70**, 6569–6579 (2004).
69. Tian, Y. & Li, Y. H. Comparative analysis of bacteria associated with different mosses by 16S rRNA and 16S rDNA sequencing. *J. Basic Microbiol.* **57**, 57–67 (2017).
70. Hornschuh, M., Grotha, R. & Kutschera, U. Epiphytic bacteria associated with the bryophyte *Funaria hygrometrica*: Effects of *Methylobacterium* strains on protonema development. *Plant Biol.* **4**, 682–687 (2002).
71. Kutschera, U. Plant-associated methylobacteria as co-evolved phytosymbionts: A hypothesis. *Plant Signal. Behav.* **2**, 74–78 (2007).
72. Twigg, M. S., Tait, K., Williams, P., Atkinson, S. & Cámara, M. Interference with the germination and growth of *Ulva* zoospores by quorum-sensing molecules from *Ulva*-associated epiphytic bacteria. *Environ. Microbiol.* **16**, 445–453 (2014).
73. Singh, R. P., Baghel, R. S., Reddy, C. R. K. & Jha, B. Effect of quorum sensing signals produced by seaweed-associated bacteria on carpaspore liberation from *Gracilaria dura*. *Front. Plant Sci.* **6**, 117 (2015).
74. Wheeler, G. L., Tait, K., Taylor, A., Brownlee, C. & Joint, I. Acyl-homoserine lactones modulate the settlement rate of zoospores of the marine alga *Ulva intestinalis* via a novel chemokinetic mechanism. *Plant, Cell Environ.* **29**, 608–618 (2006).
75. Joint, I., Tait, K. & Wheeler, G. Cross-kingdom signalling: Exploitation of bacterial quorum sensing molecules by the green seaweed *Ulva*. *Philos. Trans. R. Soc. B. Biol. Sci.* **362**, 1223–1233 (2007).
76. Tait, K. *et al.* Disruption of quorum sensing in seawater abolishes attraction of zoospores of the green alga *Ulva* to bacterial biofilms. *Environ. Microbiol.* **7**, 229–240 (2005).
77. Cove, D. The Moss *Physcomitrella patens*. *Annu. Rev. Genet.* **39**, 339–358 (2005).
78. Prigge, M. J. & Bezanilla, M. Evolutionary crossroads in developmental biology: *Physcomitrella patens*. *Development* **137**, 3535–3543 (2010).
79. Vesty, E. F. *et al.* The decision to germinate is regulated by divergent molecular networks in spores and seeds. *New Phytol.* **211**, 952–966 (2016).
80. Moshynets, O. V. *et al.* Priming winter wheat seeds with the bacterial quorum sensing signal N-hexanoyl-L-homoserine lactone (C6-HSL) shows potential to improve plant growth and seed yield. *PLoS One* **14**, e0209460 (2019).
81. Thompson, S. E. M. *et al.* Membrane recycling and calcium dynamics during settlement and adhesion of zoospores of the green alga *Ulva linza*. *Plant, Cell Environ.* **30**, 733–744 (2007).
82. Tait, K. *et al.* Turnover of quorum sensing signal molecules modulates cross-kingdom signalling. *Environ. Microbiol.* **11**, 1792–802 (2009).
83. Burke, C., Thomas, T., Lewis, M., Steinberg, P. & Kjelleberg, S. Composition, uniqueness and variability of the epiphytic bacterial community of the green alga *Ulva australis*. *ISME J.* **5**, 590–600 (2011).
84. Ghaderiardakani, F., Coates, J. C. & Wichard, T. Bacteria-induced morphogenesis of *Ulva intestinalis* and *Ulva mutabilis* (Chlorophyta): a contribution to the lottery theory. *FEMS Microbiol. Ecol.* **93**, fix094 (2017).
85. Jung, B. K. *et al.* Genomic and phenotypic analyses of *Serratia fonticola* strain GS2: a rhizobacterium isolated from sesame rhizosphere that promotes plant growth and produces N-acyl homoserine lactone. *J. Biotechnol.* **241**, 158–162 (2017).
86. Buddrus-Schiemann, K. *et al.* Analysis of N-acylhomoserine lactone dynamics in continuous cultures of *Pseudomonas putida* IsoF by use of ELISA and UHPLC/qTOF-MS-derived measurements and mathematical models. *Anal. Bioanal. Chem.* **406**, 6373–6383 (2014).
87. Erdönmez, D., Rad, A. Y. & Aksöz, N. Quorum sensing molecules production by nosocomial and soil isolates *Acinetobacter baumannii*. *Arch. Microbiol.* **199**, 1325–1334 (2017).
88. Swift, S. *et al.* Quorum sensing in *Aeromonas hydrophila* and *Aeromonas salmonicida*: Identification of the LuxR homologs AhyRi and AsaRi and their cognate N-acylhomoserine lactone signal molecules. *J. Bacteriol.* **179**, 5271–81 (1997).
89. Yamamoto, H. Viable but nonculturable state as a general phenomenon of non-sporeforming bacteria, and its modeling. *J. Infect. Chemother.* **6**, 112–114 (2000).
90. Huedo, P. *et al.* Two different rpf clusters distributed among a population of *Stenotrophomonas maltophilia* clinical strains display differential diffusible signal factor production and virulence regulation. *J. Bacteriol.* **196**, 2431–2442 (2014).
91. Alavi, P. *et al.* The DSF Quorum Sensing System Controls the Positive Influence of *Stenotrophomonas maltophilia* on Plants. *PLoS One* **8**, e67103 (2013).
92. Vesty, E. F. *et al.* The decision to germinate is regulated by divergent molecular networks in spores and seeds. *New Phytol.* **211**, 952–966 (2016).
93. Chhabra, S. *et al.* Autoregulation of carbapenem biosynthesis in *Erwinia carotovora* by analogs of N-3-oxohexanoyl-L-homoserine lactone. *J. Antibiot.* **46**, 441–454 (1993).
94. Chhabra, S. *et al.* Synthetic analogues of the bacterial signal (quorum sensing) molecule N-(3-oxododecanoyl)-L-homoserine lactone as immune modulators. *J. Med. Chem.* **46**, 97–104 (2003).
95. Johnson, M. *et al.* NCBI BLAST: a better web interface. *Nucleic Acids Res.* **36**, W5–W9 (2008).

Acknowledgements

We thank Jeff Duckett and Sharon Pilkington for wild *Physcomitrella patens* samples; Zaynub Chaudhry and Xulyu Cao for lab assistance. We thank the University of Birmingham Genomics Facility for their sequencing service. The work was funded by a UK-Natural Environment Research Council (NERC) PhD Studentship for EFV (NE/I528218/1), a grant from the Birmingham-Nottingham Strategic Collaboration fund (BNSCF002) to JC/MG and University of Birmingham funding for ALW, SN, KJ and WT to carry out Masters projects. This work was also supported by funding from the Biotechnology and Biological Sciences Research Council (BBSRC; Award Number BB/R012415/1). MC is partly funded by the National Biofilms Innovation Centre (NBIC) which is an Innovation and Knowledge Centre funded by the Biotechnology and Biological Sciences Research Council, Innovate UK and Hartree Centre.

Author contributions

E.F.V., M.C., X.L. and J.C.C. conceived and designed the study; E.F.V., A.L.W., S.N., W.T., K.J., N.H., F.G., X.L. and J.C.C. performed experiments in the lab; E.F.V., A.L.W., S.N., W.T., K.J., N.H. and F.G. analysed data; E.F.V., S.N., A.L.W., N.H., F.G., M.C. and J.C.C. wrote sections of the manuscript. N.H., M.C. and J.C.C. revised and finalised the manuscript. All authors read and approved the submitted version.

Competing interests

The authors declare that the research was conducted in the absence of any commercial or financial relationships that could be construed as a potential conflict of interest.

Additional information

Supplementary information is available for this paper at <https://doi.org/10.1038/s41598-020-59467-5>.

Correspondence and requests for materials should be addressed to M.C. or J.C.C.

Reprints and permissions information is available at www.nature.com/reprints.

Publisher's note Springer Nature remains neutral with regard to jurisdictional claims in published maps and institutional affiliations.



Open Access This article is licensed under a Creative Commons Attribution 4.0 International License, which permits use, sharing, adaptation, distribution and reproduction in any medium or format, as long as you give appropriate credit to the original author(s) and the source, provide a link to the Creative Commons license, and indicate if changes were made. The images or other third party material in this article are included in the article's Creative Commons license, unless indicated otherwise in a credit line to the material. If material is not included in the article's Creative Commons license and your intended use is not permitted by statutory regulation or exceeds the permitted use, you will need to obtain permission directly from the copyright holder. To view a copy of this license, visit <http://creativecommons.org/licenses/by/4.0/>.

© The Author(s) 2020