



# Refuting the challenges of the developmental shift of polarity of GABA actions: GABA more exciting than ever!

Yehezkel Ben-Ari<sup>1\*</sup>, Melanie A. Woodin<sup>2</sup>, Evelyne Sernagor<sup>3</sup>, Laura Cancedda<sup>4</sup>, Laurent Vinay<sup>5</sup>, Claudio Rivera<sup>1</sup>, Pascal Legendre<sup>6</sup>, Heiko J. Luhmann<sup>7</sup>, Angelique Bordey<sup>8</sup>, Peter Wenner<sup>9</sup>, Atsuo Fukuda<sup>10</sup>, Anthony N. van den Pol<sup>11</sup>, Jean-Luc Gaiarsa<sup>1</sup> and Enrico Cherubini<sup>12</sup>

<sup>1</sup> INSERM Unité 901, Université de la Méditerranée, UMR S901 Aix-Marseille 2 and INMED, Marseille, France

<sup>2</sup> Department of Cell and Systems Biology, University of Toronto, Toronto, ON, Canada

<sup>3</sup> Institute of Neuroscience, Medical School, Newcastle University, Newcastle upon Tyne, UK

<sup>4</sup> Department of Neuroscience and Brain Technologies, The Italian Institute of Technology, Genova, Italy

<sup>5</sup> Centre National de la Recherche Scientifique, Institut de Neurosciences de la Timone, UMR 7289, Aix Marseille Université, Marseille, France

<sup>6</sup> INSERM U 952, Centre National de la Recherche Scientifique, UMR 7224, Université Pierre et Marie Curie, Paris, France

<sup>7</sup> Institute of Physiology and Pathophysiology, University Medical Center of the Johannes Gutenberg-University of Mainz, Mainz, Germany

<sup>8</sup> Department of Neurosurgery and Cellular and Molecular Physiology, Yale University School of Medicine, New Haven, CT, USA

<sup>9</sup> Department of Physiology, Emory University School of Medicine, Atlanta, GA, USA

<sup>10</sup> Department of Neurophysiology, Hamamatsu University School of Medicine, Hamamatsu, Japan

<sup>11</sup> Department of Neurosurgery, Yale University School of Medicine, New Haven, CT, USA

<sup>12</sup> Department of Neurobiology and Italian Institute of Technology Unit, International School for Advanced Studies, Trieste, Italy

## Edited by:

Arianna Maffei, State University of New York at Stony Brook, USA

## Reviewed by:

Nicholas C. Spitzer, UC San Diego, USA

Pablo E. Castillo, Albert Einstein College of Medicine, USA

## \*Correspondence:

Yehezkel Ben-Ari, INMED, Parc scientifique de Luminy, BP 13, 13273 Marseille Cedex 09, France.  
e-mail: ben-ari@inmed.univ-mrs.fr

During brain development, there is a progressive reduction of intracellular chloride associated with a shift in GABA polarity: GABA depolarizes and occasionally excites immature neurons, subsequently hyperpolarizing them at later stages of development. This sequence, which has been observed in a wide range of animal species, brain structures and preparations, is thought to play an important role in activity-dependent formation and modulation of functional circuits. This sequence has also been considerably reinforced recently with new data pointing to an evolutionary preserved rule. In a recent "Hypothesis and Theory Article," the excitatory action of GABA in early brain development is suggested to be "an experimental artefact" (Bregestovski and Bernard, 2012). The authors suggest that the excitatory action of GABA is due to an inadequate/insufficient energy supply in glucose-perfused slices and/or to the damage produced by the slicing procedure. However, these observations have been repeatedly contradicted by many groups and are inconsistent with a large body of evidence including the fact that the developmental shift is neither restricted to slices nor to rodents. We summarize the overwhelming evidence in support of both excitatory GABA during development, and the implications this has in developmental neurobiology.

**Keywords:** GABA, giant depolarizing potentials, energy substrates, brain slices, chloride homeostasis, development

During brain development there is a progressive shift in the pattern of network activity toward an adult form that is sustained by a sequence of gradual changes in voltage- and transmitter-gated currents. Immature currents are sluggish with a long time course that enables very heterogeneous neurons to fire and connect together. To the best of our knowledge, there is not a single current or pattern that is identical in immature and adult networks: an immature brain is clearly not a small adult brain. One of the best-documented developmental sequences in physiology is the progressive reduction of intracellular chloride in neurons and the associated switch in GABA polarity (Obata et al., 1978; Mueller et al., 1984; Ben-Ari et al., 1989, 2007; Owens et al., 1996; Ben-Ari, 2002; Owens and Kriegstein, 2002; Tyzio et al., 2008; Blaesse et al., 2009). This has been confirmed in a wide range of animal species from worms to higher mammals, brain structures and preparations from neuronal cultures to slices, intact organs *in vitro* and *in vivo* [see the large table with

the papers showing the developmental sequence in Ben-Ari et al. Physiological reviews (Ben-Ari et al., 2007)]. The activation of GABA<sub>A</sub> and glycine receptors during early postnatal development routinely produces membrane depolarization, which, in some occasion, reach spike threshold to generate sodium action potentials (Chen et al., 1996; Khazipov et al., 1997; Leinekugel et al., 1997; Mienville, 1998; Dzhala and Staley, 2003), the activation of the non-inactivating sodium currents (Valeeva et al., 2010), the activation of voltage gated calcium currents (Leinekugel et al., 1997) and the removal of the voltage dependent Mg<sup>++</sup> block of NMDA channels also leading to large calcium influx (McLean et al., 1996; Leinekugel et al., 1997; Caillard et al., 1999). The GABA/NMDA links (Ben-Ari et al., 1997) has been reinforced recently with immuno-cytochemical observations (Cserep et al., 2012). Depolarizing GABA during development and the subsequent shift to inhibitory transmission are widely accepted as key events in the proper development of neuronal networks and

brain structures (Ben-Ari, 2002; Owens and Kriegstein, 2002). Brain development is also associated with the generation by depolarizing GABA of immature network patterns like the Giant Depolarizing Potentials (GDPs) in the hippocampus (Ben-Ari et al., 1989) and other brain structures (Ben-Ari, 2001, 2002). GDPs also parallel long lasting brain patterns that are present in the developing but not the adult brain (Ben-Ari, 2001, 2002).

During the last two decades, this sequence of events has been strongly reinforced by several complementary observations including: (1) the developmental sequence of the chloride cotransporters NKCC1 and KCC2 expression that has provided a mechanistic substrate to the progressive reduction of intracellular chloride (Rivera et al., 1999; Payne et al., 2003; Yamada et al., 2004; Blaesse et al., 2009); (2) the demonstration that GABAergic currents mature before glutamatergic ones providing the first and sole source of activity in various brain structures (Chen et al., 1996; van den Pol et al., 1998; Tyzio et al., 1999; Gao and van den Pol, 2001; Hennou et al., 2002; Gozlan and Ben-Ari, 2003; Johnson et al., 2003; Wang and Kriegstein, 2008); (3) the demonstration that GABAergic hub interneurons orchestrate the generation of GDPs that represent the first synapse-driven patterns of activity in the hippocampus (Bonifazi et al., 2009; Picardo et al., 2011); (4) the findings that early in development, before the establishment of synapses, growth cones contain and release GABA and respond to GABA with calcium elevations (Obrietan and van den Pol, 1996; van den Pol, 1997; Gao and van den Pol, 2000) and; (5) the demonstration of an oxytocin mediated abrupt shift during delivery that exerts a neuroprotective and analgesic action on the newborn's brain (Tyzio et al., 2006). Collectively, these observations have provided a general concept for the development of cellular and network activities and how they modulate the construction of neuronal ensembles. The GABA developmental shift of polarity has been accepted by a wide range of researchers and considered as a fundamental property of developing networks (Ben-Ari et al., 2007).

In a recent review article, Bernard and Bregestovski challenge this ensemble of observations claiming that excitatory GABA is a "correct observation but an experimental artifact" (Bregestovski and Bernard, 2012). This paper relies on two sets of observations:

1. The observations made by Zilberter et al. that the depolarizing/excitatory actions of GABA in glucose perfused slices shift to hyperpolarizing/inhibitory in the presence of additional Energy Substrates (ESs) including ketone bodies metabolites lactate or pyruvate (Holmgren et al., 2010; Zilberter et al., 2010; Mukhtarov et al., 2011). The authors suggest that neurons are energy deficient in glucose-perfused slices resulting in the depolarizing action of GABA. ESs are also suggested to better mimic maternal milk than glucose and therefore to be physiologically relevant.
2. The observations by Staley et al. (Dzhala et al., 2012) that the slicing procedure damages surface, but not deep, neurons in neonatal slices leading to an accumulation of intracellular  $\text{Cl}^-$ . Bregestovski and Bernard (2012) extend this observation to their model suggesting that injured (surface) neurons have high-energy requirement that are not met by glucose,

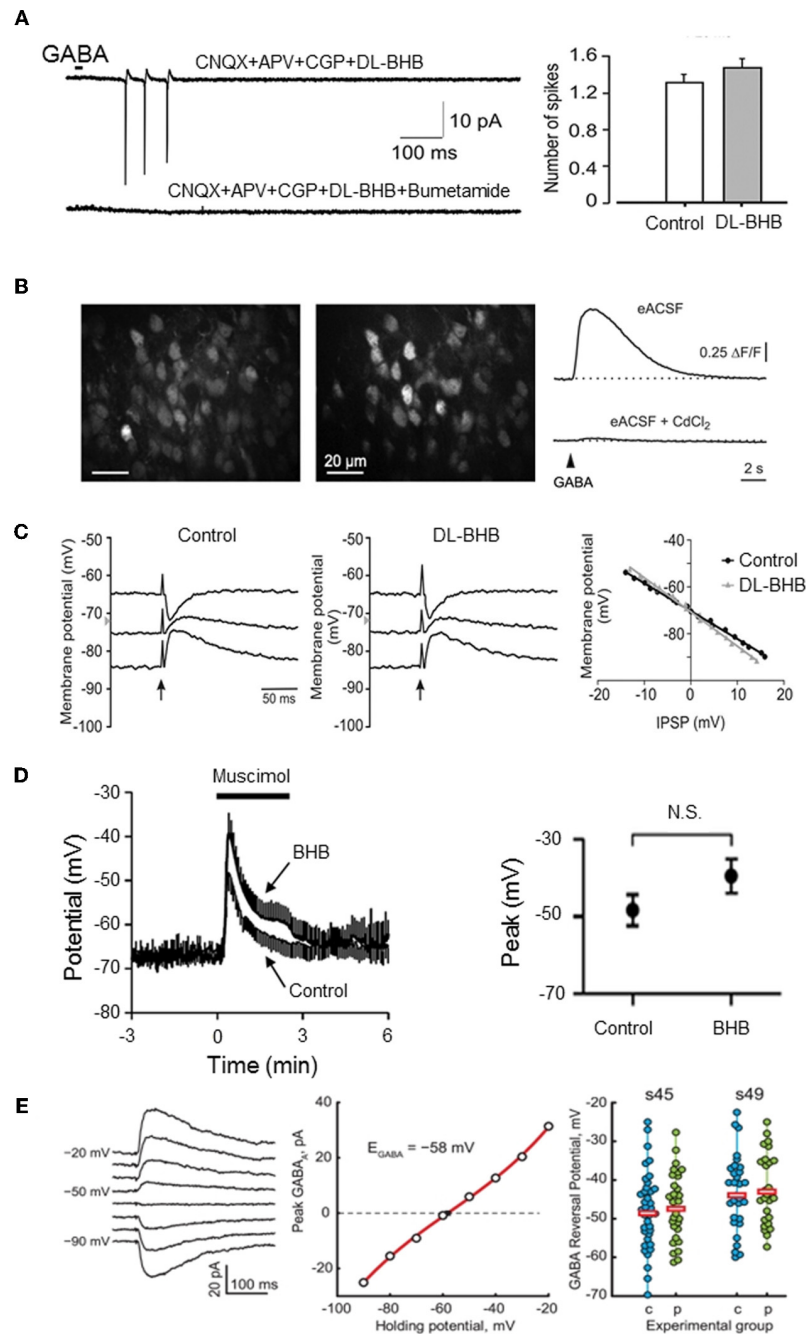
resulting in the excitatory actions of GABA and the associated generation of GDPs.

Challenging an established concept is always good news in science as it stimulates discussion and the elaboration of novel concepts. However, this review and the underlying observations fall short of challenging the developmental sequence of the polarity of GABA actions as they are based on a small set of studies that have been repeatedly invalidated by many groups. This review has also overlooked extensive investigations that directly contradict the studies that are cited in addition to important contradictions. We shall first examine the validity of the ESs results and the damage explanation, before analysing more general aspects of the proposed model.

### THE ROLE OF ENERGY SUBSTRATES IN GABA POLARITY

The Zilberter group published a set of papers suggesting that the availability of ESs determines GABA polarity in neonatal brain slices (Holmgren et al., 2010; Zilberter et al., 2010; Mukhtarov et al., 2011). According to these authors, GABA is hyperpolarizing and inhibitory, and GDPs are not detected in neonatal slices exposed to oxidative or complementary ESs, consisting of adding to glucose the ketone body metabolite dl- $\beta$ -hydroxybutyric acid (BHB; 4 mM), lactate (4–5 mM), or pyruvate (4–5 mM) to artificial cerebrospinal fluid (ACSF). These ESs are suggested to modulate GABA polarity by improving metabolic needs. The authors also reported that the modulation of GABA polarity does not depend on an acidification expected to occur with these weak intracellular acids (Mukhtarov et al., 2011). However, these observations have been contradicted by many groups relying on a wide-range of preparations and techniques (**Figure 1**):

1. Using the same preparation, experimental apparatus, and concentrations (Tyzio et al., 2011), BHB like physiological concentrations of lactate or pyruvate do not alter the depolarizing and excitatory actions of GABA in immature slices (**Figure 1A**). These results were verified using multiple recording techniques including dual single channel recordings of NMDA and GABA receptors, perforated- and whole-cell patch clamp recordings, and field recordings. Also, non-invasive recording using dynamic two-photon imaging of hundreds of neurons revealed that the generation of GDPs is unaltered by BHB, but fully blocked by an antagonist of the chloride importer NKCC1 confirming that neurons in immature slices have high intracellular  $\text{Cl}^-$ . Also physiological levels of pyruvate and lactate had no effects on the excitatory actions of GABA or on the generation of GDPs (see below). It is worth noting to stress that immature neurons are extremely resistant to anoxia or aglycemia (Cherubini et al., 1989; Krnjevic et al., 1989) and reliable evidence that neurons lack energy in glucose 10 mM remains to be shown.
2. Using minimally invasive optical and electrophysiological techniques (calcium imaging, cell-attached single  $\text{K}^+$  channel and loose patch recordings), Kirmse and collaborators reported that BHB does not affect GABA depolarization in cortical plate neurons from immature slices (Kirmse et al., 2010) (**Figure 1B**). It is important to note that the perfusion



**FIGURE 1 | Energy substrates do not affect  $E_{GABA}$  or GABA actions in the immature neurons.** (A) Energy substrates (DL-BHB, 4 mM) do not alter the excitation produced by focal application of GABA in the neonatal rat hippocampus (cell-attached patch-clamp recording). Bumetanide (10  $\mu$ M) fully blocked the GABA response. [Modified from Tyzio et al. (2011)]. (B) Energy substrates (DL-BHB, 4 mM) do not affect GABA-mediated  $Ca^{2+}$  in neonatal cortical mice. Raw fluorescence image displaying OGB1-stained cells in the upper cortical plate (left) and  $\Delta F$  image illustrating GABA-responsive cells (middle). GABA-mediated somatic  $[Ca^{2+}]$  transients persisted in BHB-conditions (right, upper trace) but was sensitive to CdCl<sub>2</sub> (lower trace, 100  $\mu$ m). [Modified from Kirmse et al. (2010)]. (C) Energy substrate (DL-BHB, 4 mM) do not affect  $E_{GABA/Gly}$  in lumbar spinal cord motoneurons (P0–P5 rats). IPSPs evoked by electrical stimulation of ventral funiculus (vertical arrows) at different holding potentials in MNs from P4 rat in control

and DL-BHB (4 mM) conditions. Right panel demonstrates the amplitude of IPSPs as a function of holding potential in both control and DL-BHB conditions, respectively. [Modified from Bos and Vinay (2012)]. (D) Energy substrates (DL-BHB, 4 mM) do not affect GABA-mediated depolarization in cultured hippocampal neurons. Average muscimol (10 mM)-mediated responses in control and BHB (4 mM) conditions (left). The peak response of the muscimol-mediated depolarization was not affected by BHB. [Modified from Waddell et al. (2011)]. (E) Energy substrates (pyruvate, 5 mM) do not affect  $E_{GABA}$  in Xenopus tadpole optic tectum. Example of Evoked GABA response recorded in gramicidin-perforated patch clamp configuration at different holding potentials (left traces) and corresponding I/V relationship (middle graph).  $E_{GABA}$  observed in cells recorded at two different developmental stage in control and pyruvate (5 mM) conditions. Horizontal bars show the average  $E_{GABA}$  values (right). [Modified from Khakhhalin and Aizenman (2012)].

- rate used in this study was identical to that used by Zilberter and colleagues (Holmgren et al., 2010), challenging the suggestion that the discrepancy is due to a slowing of the perfusion rate that weakens spontaneous activity through a lack of energy (Bregestovski and Bernard, 2012). Moreover, reducing the perfusion flow rate inhibits spontaneous activity independently of energy deprivation in the embryonic hindbrain-spinal cord and in the postnatal cortex *in vitro* (Yvert et al., 2011).
- Bos and Vinay showed that in the neonatal rat lumbar spinal cord *in vitro* supplementing the ACSF with physiological concentrations of ESs does not alter the reversal potentials of synaptic currents mediated by GABA and glycine, known to be depolarizing at early developmental stages (Bos and Vinay, 2012) (**Figure 1C**). Moreover, ESs did not affect the depolarizing action of GABA on primary afferent terminals.
  - Using an electrophysiological and imaging approach Waddell and collaborators showed that the addition of BHB to cultured hippocampal neurons does not affect neuronal  $\text{Ca}^{2+}$  nor  $\text{GABA}_A$ -mediated membrane depolarization (Waddell et al., 2011) (**Figure 1D**). These observations confirm extensive observations by Poo, Woodin and many other laboratories (Ganguly et al., 2001; Chudotvorova et al., 2005; Fiumelli et al., 2005; Khirug et al., 2005; Balena and Woodin, 2008; Yeo et al., 2009; Succol et al., 2012), showing that the developmental shift of GABA actions occur in cultures where abundant energy is supplied.
  - Using isolated brains of developing wild-type *Xenopus* tadpoles, Khakhhalin and Aizenman demonstrated that glucose-based ACSF is an appropriate extracellular media for *in vitro* studies and that pyruvate does not alter GABA polarity (Khakhhalin and Aizenman, 2012) (**Figure 1E**). They also showed that the more immature neurons found in the vicinity of the central are more likely to show depolarizing responses to GABA than mature ones.
  - Kaila and colleagues have invalidated the metabolic interpretation of the actions of lactate on immature slices (Ivanov et al., 2011; Mukhtarov et al., 2011). Using extracellular recordings of GDPs, while monitoring the mitochondrial membrane potential and intracellular pH, they demonstrated that standard glucose concentrations do not alter mitochondrial energy metabolism, and are thus an adequate energy supply for neonatal neurons in acute slices (Ruusuvaori et al., 2010). Supplementing the standard physiological solution with l-lactate did not produce a change in mitochondrial membrane potential, whereas withdrawal of glucose, in the presence or absence of l-lactate produced a pronounced depolarization. Furthermore, d-lactate (a poor substrate of mitochondrial metabolism) caused a prompt inhibition in GDP frequency similar to l-lactate, excluding a metabolic explanation of the shifts. The suppression of GDPs was strictly proportional to the fall in  $\text{pH}_i$  caused by weak carboxylic acids (l-lactate, d-lactate, or propionate) or by an elevated  $\text{CO}_2$ . These observations clearly indicate that when the effects of ESs are observed, they are due to a change in intracellular pH, and not to a decrease in mitochondrial energy metabolism.
  - In acutely isolated retinas, Barkis and collaborators demonstrated that the percentage of retinal ganglion cells in which the GABA agonist muscimol increased somatic  $\text{Ca}^{2+}$  was not altered by pyruvate (Barkis et al., 2010).
- Therefore, seven different studies have refuted the results of the Zilberter and colleagues and to the best of our knowledge there is not a single study confirming their findings. In addition, the effect of modifying the metabolic supply of the ACSF has been tested in human epileptic slices (G Huberfeld, personal data). The neocortex surrounding gliomas and the subiculum deafferented by the hippocampal sclerosis generate spontaneous interictal discharges *in vitro*. These activities are sustained by depolarizing effects of GABA related to abnormally high  $\text{Cl}^-$  concentration in some pyramidal cells, so that re equilibrating intracellular  $\text{Cl}^-$  by low amounts of the diuretic bumetanide controls the epileptic discharges. Replacing 5 mM of glucose by 5 mM pyruvate ( $n = 2$ ) or 5 mM lactate ( $n = 2$ ) in the ACSF did not affect interictal-like discharges both in the cortex and the subiculum. Therefore, the depolarizing actions of GABA are valid in different preparations extending from tadpoles to humans.
- Interestingly, the criticism of the developmental shift is quite restricted to the post-natal period. Indeed, referring to the study of Wang and Kriegstein (2008). Bernard and Bregestovski state “*Treatment of mice with bumetanide during the period of embryonic cortical developmental results in disruption of excitatory synapse formation (Wang and Kriegstein, 2008). As bumetanide antagonizes the  $\text{Na}^+ - \text{K}^+ - 2\text{Cl}^-$  cotransporter (NKCC1), which accumulates intracellular chloride, these observations suggest that  $\text{Cl}^-$  in embryonic neurons is elevated and plays an important signaling role in developmental processes.*” Therefore, the authors agree that GABA must depolarize embryonic neurons confirming the developmental sequence but challenge only its time course with a suggested shift around delivery (see below). Yet, in the same study, Wang and Kriegstein showed that bumetanide exerts its most dramatic effects when “*administered between E17 and P7*” but not when it is only administered *in utero* indicating that GABA must depolarize neurons during the first postnatal week and not only in the embryo. Therefore, the studies these authors rely upon to develop their arguments invalidate their conclusions confirming both the sequence and the timing reported previously.
- There are three other concerns with the model proposed:
- The concentrations of pyruvate (4–5 mM) used by these authors are several orders of magnitude higher than those observed in physiological conditions (20–40 fold) and never observed in the brain except under severe metabolic disorders. There are thousands of publications (2449 citations in PubMed under “pyruvate and brain disorders” as of June 2012) addressing questions related to high pyruvate as an indication of suffering of central neurons and an invitation to intervene in emergency to avoid brain complications. Collectively, these studies contradict the physiological relevance of such high doses of ESs and the suggestion that the use of pyruvate or lactate may be “therapeutically useful to treat the cause and not the consequences of neurological disorders” (Zilberter et al., 2010). Clearly, the effects of high pyruvate or

lactate are due to pH shifts that directly impact intracellular chloride and not to metabolic improvements.

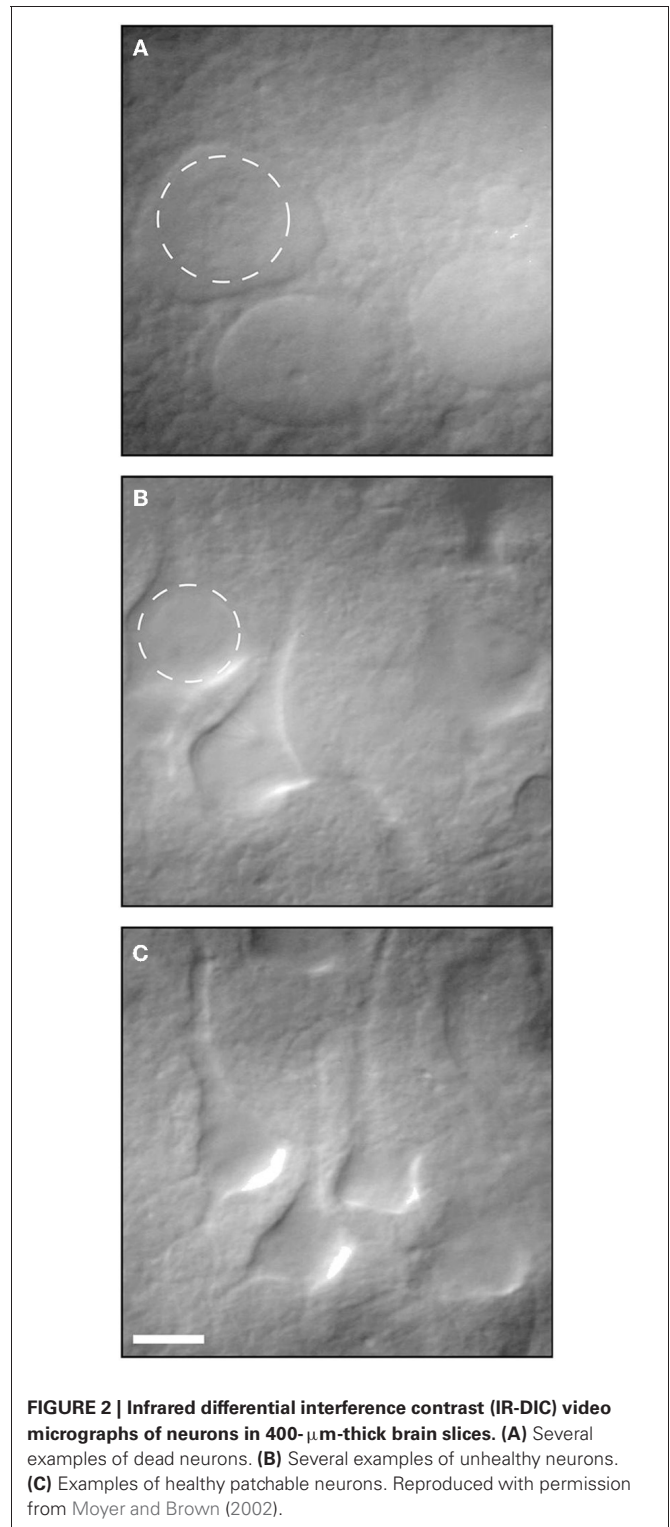
2. The argument that ketone bodies metabolites mimic maternal milk and are therefore more physiological than glucose cannot be reconciled with the observation that the depolarizing shift occurs in non-mammalian species including zebrafish, turtles, chicken or tadpoles (Sernagor et al., 2003; Leitch et al., 2005; Akerman and Cline, 2006; Gonzalez-Islas et al., 2009, 2010; Zhang et al., 2010). It is also incompatible with the observation that during delivery under the peak of oxytocin actions, GABA hyperpolarizes neurons in glucose perfused slices (Tyzio et al., 2006).
3. The anticonvulsive action of the Ketogenic diet is not mediated by GABAergic signals. Indeed, comparing the actions of functional and blocked ketogenesis on seizures produced by fluothryl, Minlebaev and Khazipov reported that diazepam exerted its usual anticonvulsive actions in both conditions whereas bumetanide had no significant anticonvulsive effects in both conditions (Minlebaev and Khazipov, 2011).

### THE ART OF SLICING

In spite of obvious limitations (i.e., neurons with damaged axons and dendrites, lack of long-range connexions, artificial conditions etc.) acute brain slices have provided essential information on the basic mechanisms of neuronal activity, synaptic function, network synchronization, and neuronal plasticity in both physiological and pathological conditions. While it is important to acknowledge the limitations of *in vitro* preparations, and use *in vivo* options where possible, there is still no other preparation that has enabled us to gain as much information, notably when coupled with genetic and labeling techniques to identify the operation of specific neuronal types and their roles in brain networks.

There is little doubt that during the slicing procedure, some neurons are damaged and slices are occasionally not fit. This has been known for decades and well-trained electrophysiologists can readily identify damaged neurons relying on their morphology and resting membrane potential. As Moyer and Brown state in the highly cited chapter on preparing brain slices for patch clamp recordings (Moyer and Brown, 2002) “*Dead neurons are always present within the first 25  $\mu\text{m}$  below the surface of a brain slice.*” They recommend recording from neurons between 70–140  $\mu\text{m}$  below the slice surface. Moreover, they explain in detail how visually healthy and patchable neurons are easy to distinguish from dead or unhealthy neurons using IR-DIC optic (**Figure 2**) and relying on their resting membrane potential. This chapter, which is highly cited, suggests that the claim that most electrophysiological studies are performed on surface layers (30–80  $\mu\text{m}$ ) with large amount of damaged cells is unfounded.

To challenge the physiological relevance of the excitatory actions of GABA in immature neurons, the authors of the “hypothesis and theory article” rely extensively on a recent study by Staley et al. (Dzhala et al., 2012) that used Clomeleon genetic mice to measure chloride, and extracellular multi-unit activity to measure the effects of GABA analogs. The authors of this study show that in P5–P7 slices, but not in the intact hippocampal preparations developed by Ben-Ari and colleagues (Khalilov et al.,



**FIGURE 2 | Infrared differential interference contrast (IR-DIC) video micrographs of neurons in 400- $\mu\text{m}$ -thick brain slices. (A)** Several examples of dead neurons. **(B)** Several examples of unhealthy neurons. **(C)** Examples of healthy patchable neurons. Reproduced with permission from Moyer and Brown (2002).

1997), the slice surface is damaged and neurons are silent, with high intracellular chloride and no response to GABA analogs. The resting membrane potential of these “damaged neurons” was not determined and the neurons neither identified nor reconstructed. This “silent zone” shifts from 30–60  $\mu\text{m}$  at P5–7 to 70–90  $\mu\text{m}$  by

the end of the fourth week, and this is suggested to underlie the generation of GDPs by the immature but not the adult network. However, in a follow up to this work, using the same techniques, the same group has shown that before the P5–P7 period “GABA excites immature hippocampal neurons during the early postnatal period both in the preparations of the intact hippocampus and slices and these excitatory actions are not due to the neuronal injury during slice preparation” (Valeeva et al., 2012). Therefore, again the developmental shift of the polarity of GABA actions is confirmed in rats and mice but Staley et al. suggest that the shift may take place around P5–P7. This timing is identical to that proposed already in 1989 for hippocampal pyramidal neurons (Ben-Ari et al., 1989) and repeatedly confirmed since then with a wide range of invasive and non-invasive recordings techniques (Ben-Ari et al., 2007). Therefore, it seems unreasonable to rely on the observations of Dzhala et al. (2012) to challenge the developmental sequence and its timing.

There is little doubt that neuronal damage can be associated with an accumulation of intracellular chloride and a shift of polarity of the actions of GABA, as reported in a wide range of insults (see below). This however neither implies that the observations made in slices are due to damage nor does it explain why the damage would be translated to depolarizing GABA at the end of the first postnatal week but neither before nor after. By measuring the resting membrane potential and other intrinsic parameters trained, electrophysiologists can readily dissociate healthy from damaged neurons. Interestingly, the original demonstration of depolarizing actions of GABA (Ben-Ari et al., 1989) relied on intracellular, not patch-clamp, recordings excluding *de facto* recording from surface neurons. Since slices are extensively used to dissect neuronal mechanisms, we would like to add the following additional points concerning the studies by Dzhala et al. (2012):

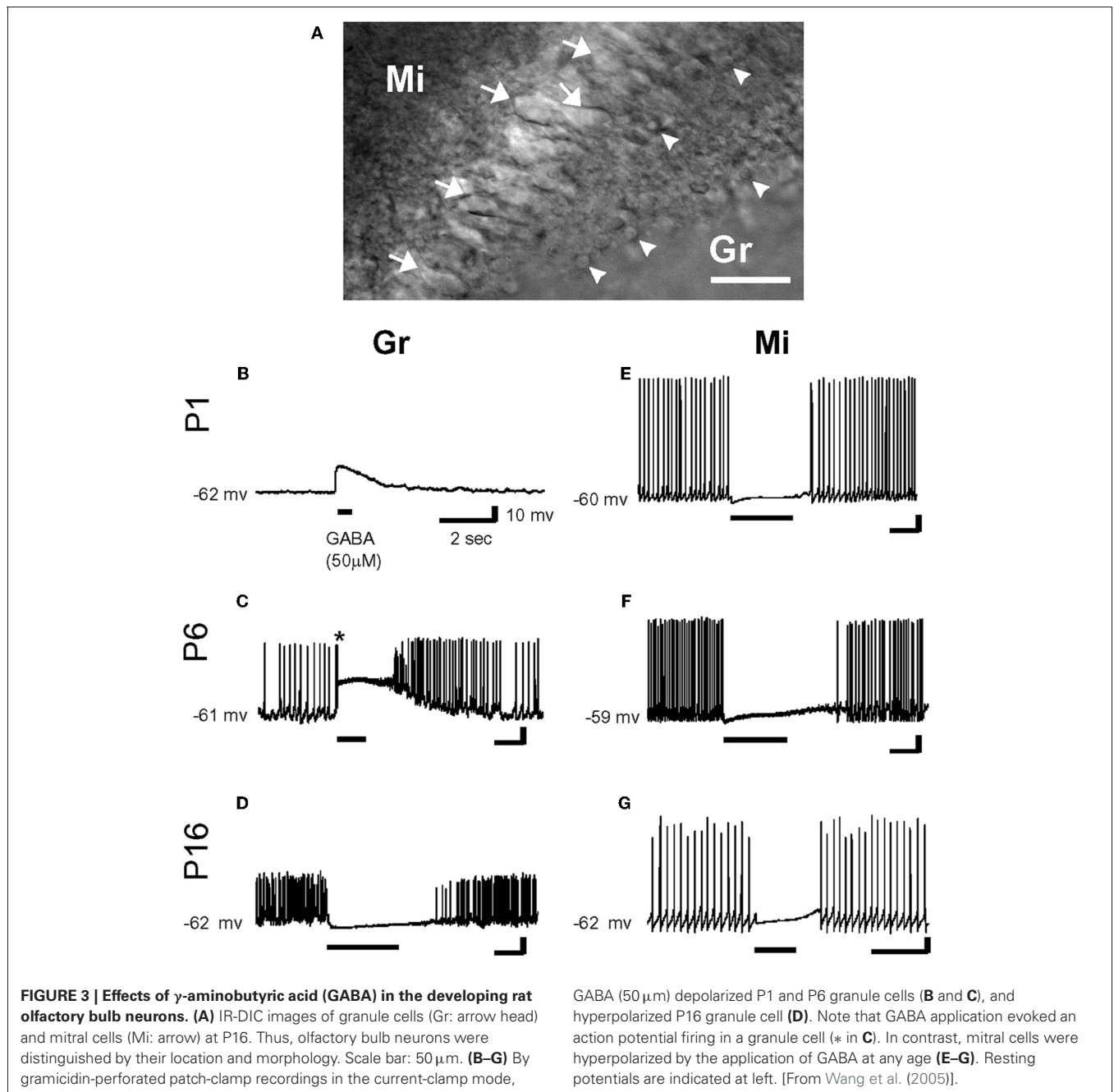
1. The authors pooled data from CA3 and CA1 hippocampal regions, pyramidal neurons and interneurons and male and female mice and male rats in spite of the well-known differences in developmental sequences that are age and neuronal type and sex dependent (Ben-Ari et al., 2007). In addition, when single neurons are functionally determined in terms of their synaptic currents and reconstructed after dye injections, they have normal features without the varicosities observed by Dzhala et al. (Tyzio et al., 1999; Khazipov et al., 2001; Hennou et al., 2002; Gozlan and Ben-Ari, 2003). The use of long lasting laser excitation can damage neurons possibly adding to the slicing paradigm (see Quilichini et al., 2012).
2. These authors used the ratiometric and genetically-encoded  $\text{Cl}^-$  indicator Clomeleon (Kuner and Augustine, 2000). In addition to the strong pH sensitivity of this sensor, Clomeleon has a very low sensitivity to  $\text{Cl}^-$  with an  $\text{EC}_{50}$  of more than 160 mM (Kuner and Augustine, 2000; Bregestovski et al., 2009). With an average  $K_D$  of 91 mM,  $R_{\text{max}}$  of 1.026 and  $R_{\text{min}}$  of 0.268 the intracellular  $[\text{Cl}^-]$  measurements given by Dzhala et al. (2012) should be taken with caution; this is reflected by the extreme heterogeneity of reported chloride levels (from 1 to 120 mM between P5 and P7). It does not come as a surprise that neurons at the slice surface, in particular pyramidal

neurons with long apical dendrites, may be damaged in their dendritic compartment.

However, from a three dimensional perspective, neurons deep in the slice also maintain extensions above and below the slice. In fact numerous studies from acute slices have provided an excellent preservation of the dendritic tree [e.g., (Staiger et al., 2004)] when slices are prepared and cut in a manner, which leaves even long apical dendrites of layer 5 neocortical pyramidal neurons intact (Frick et al., 2008). Contrary to their interpretation, Nabekura and collaborators recorded from acutely dissociated neurons, which are more severed than in slices, yet GABA produced a hyperpolarization in most contralateral side neurons (Nabekura et al., 2002). In contrast, neurons from the ipsilateral side that were axotomized 1–3 days earlier showed GABA-induced depolarization and neurons freshly axotomized before recording were healthy enough to be hyperpolarized by GABA suggesting chronic not acute effects of lesions on  $\text{Cl}^-$ . Interestingly, in coronal olfactory bulb slices, using gramicidin-perforated patch-clamp recordings, Wang and collaborators found that mitral cells (acutely axotomized but expressing KCC2) were hyperpolarized and inhibited by GABA, while granule cells (not axotomized but lacking KCC2) were depolarized and/or excited by GABA (Wang et al., 2005) (**Figure 3**) [also see Toyoda et al. (2003)]. Both types of cells were located at similar depth in the slices, illustrating the cell type dependence of the polarity of GABA and contradicting the suggestion that damage underlies the depolarizing actions of GABA (Bregestovski and Bernard, 2012; Dzhala et al., 2012). Similarly, many studies in which immature surface and deep neurons were recorded and reconstructed were found to have healthy resting membrane potentials with neuronal arbors without signs of varicosities or swelling (review in Ben-Ari et al., 2007).

Furthermore, Cajal-Retzus cells in the marginal zone/layer I of the cerebral cortex of immature mammals project their dendrites exclusively in this upper cortical layer where most of the axonal projections are located making this cell type an ideal candidate to study GABA actions in tangential neocortical slices. Experimental studies and a mathematical model provide strong evidence that the steady-state  $[\text{Cl}^-]_i$  of these cells is approximately 30 mM and that activation of GABA-A and glycine receptors in this cell type has an excitatory action under experimental conditions which mimic the *in vivo* situation (Kilb et al., 2002; Achilles et al., 2007; Kolbaev et al., 2011a,b). Indeed, similar prominent on-going spontaneous network activity is observed in the somatosensory cortex of newborn rats *in vivo* (Yang et al., 2009, 2012).

3. Dzhala et al. (2012) suggest that superficial neurons are functionally disconnected from the network in mature but not immature slices because in the former, neurons are completely dead whereas in the latter, superficial neurons are damaged but can still contribute to network activity. This argument is speculative and lacks experimental evidence. Moreover, the distribution of the damaged neurons with respect to slice depth differs from the depth distribution of neurons excited by GABA, as only neurons of the core of the slice were hyperpolarized by GABA (see Figure 6F of



Dzhala et al., 2012) casting some doubt on the relationship between damage and GABA responses. It is quite difficult to understand why surface neurons would exhibit depolarizing GABAergic responses and alter spontaneous network activity between P5–P14 and not earlier or later. This is also inconsistent with the observation that during the 2nd postnatal week, GABA exerts hyperpolarizing actions and the GDPs are replaced by Large Hyperpolarizing Potentials at that stage (Ben-Ari et al., 1989).

4. The damaged tissue hypothesis is difficult to reconcile with the transient and abrupt shift of GABA from the depolarizing to the hyperpolarizing direction triggered by maternal

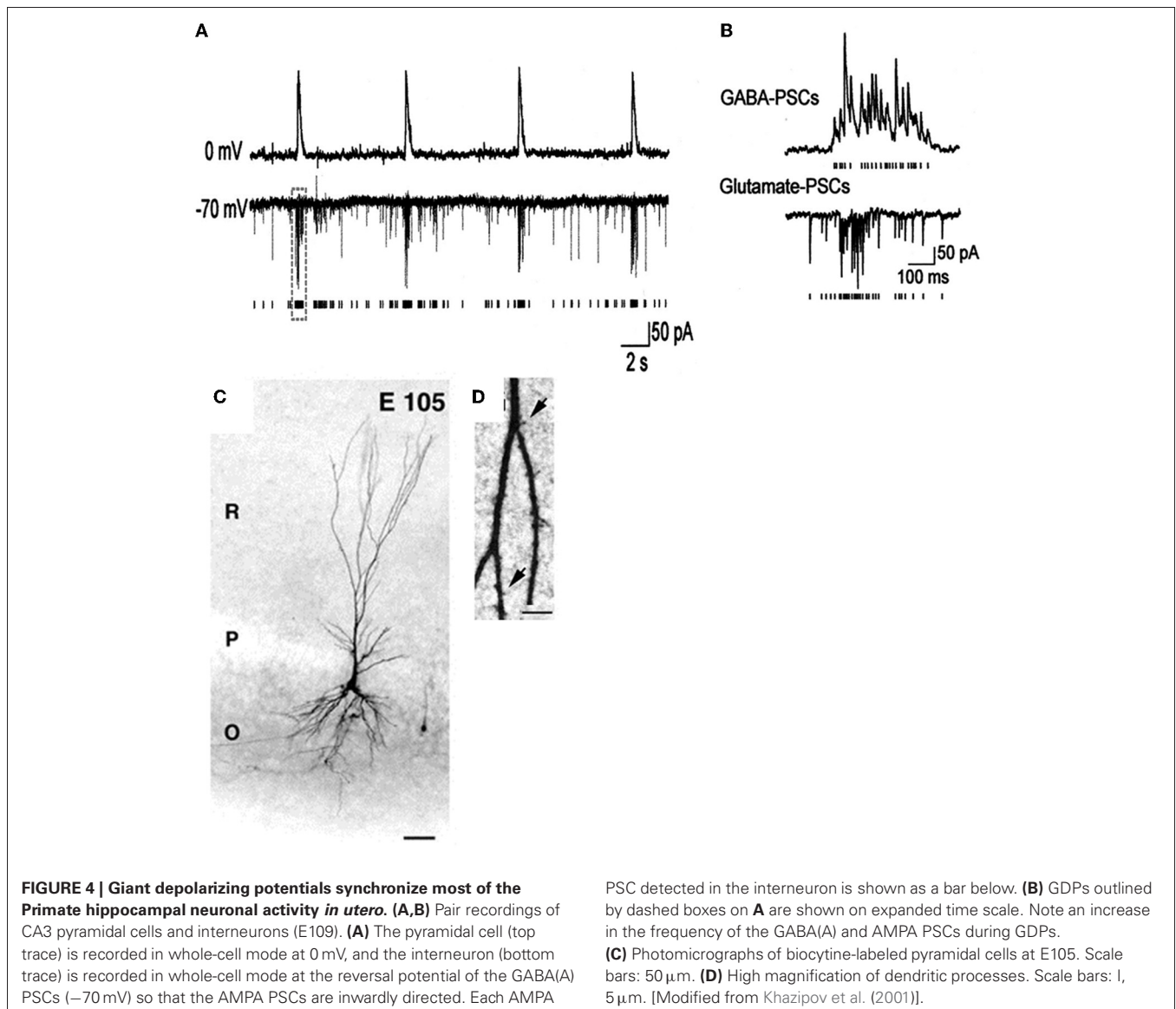
oxytocin just before parturition that exerts a protective and analgesic action (Tyzio et al., 2006; Mazzuca et al., 2011). It is also difficult to reconcile with the accelerated transition of GABA action from excitation to inhibition, observed in hippocampal slices from mice reared during the first two postnatal weeks in an enriched environment (He et al., 2010), the negative shift in  $E_{\text{GABA}}$  caused by maternal separation-stress (Galanopoulou, 2008a,b), the sex dependence of the timing of the shift (Galanopoulou et al., 2003; Galanopoulou, 2008a,b) or the neuronal type specific effects of GABA (Banke and McBain, 2006; Rheims et al., 2008). It is also difficult to reconcile with the delayed shift of GABA action observed in

neuronal cultures (Ganguly et al., 2001; Barkis et al., 2010) and in the retina from dark-reared turtles (Sernagor et al., 2003). If immature brain slices are severely damaged, it is difficult to understand why adult slices that are more susceptible to energy deprivation would not generate GDPs. Similarly, it is quite unlikely that all the studies reporting depolarizing actions of GABA were made from surface damaged neurons.

- Bregestovski and Bernard (2012) consider GDPs to be a pattern generated by the energy insufficiency of glucose perfused slices, reminiscent of inter-ictal activities observed in epileptic or damaged preparations. However, GDPs have been recorded in embryonic macaques (Khazipov et al., 2001) (Figure 4) at times when Bernard and Bregestovski agree that GABA is genuinely depolarizing (see below) and cannot be due to damage. Moreover, GDP-like activity has been recorded *in vivo* in freely moving rats (Leinekugel et al., 2002) and organotypic

slice cultures (Mohajerani and Cherubini, 2005). In contrast to interictal events, GDPs that are restricted to interneurons at an early stage (Ben-Ari et al., 2007), propagate from the septal to the caudal poles of the hippocampus (Leinekugel et al., 1998), have a intracellular chloride dependent reversal potential (Khazipov et al., 1997) and are blocked *in vivo* and *in vitro* by pharmacological or genetic invalidation of the chloride importer NKCC1 (Sipila et al., 2006; Nardou et al., 2011; Takano et al., 2012).

The depolarizing actions of GABA and the presence of correlated network activity have been observed in a wide range of spinal cord and brain tissue preparations that are not subject to neuronal damage or energy deprivation. These include: brain slabs (Owens et al., 1996), the relatively intact chick, mouse, and rat embryonic spinal cord preparations (Landmesser and O'Donovan, 1984; Chub and O'Donovan, 2001; Hanson and Landmesser, 2003; Ren and Greer, 2003; Yvert et al., 2004;





Delpy et al., 2008; Gonzalez-Islas et al., 2009) and the intact retina (Fischer et al., 1998). Even if neuronal cultures have some limitations and re-establish a neuronal network that differs from the *in vivo* one, they are not damaged and show a complete axonal and dendritic arborization. Nonetheless, the developmental shift in GABAergic responses and KCC2 expression has been observed in neuronal cultures (Obrietan and van den Pol, 1995; Chudotvorova et al., 2005; Khirug et al., 2005; Mohajerani and Cherubini, 2005; Balena and Woodin, 2008; Yeo et al., 2009; Succol et al., 2012) where GDPs have been recorded with similar features to slice GDPs (Voigt et al., 2001). To test whether the depolarizing actions of GABA in developing neurons *in vitro* might be due to the damage induced by culturing the cells, rat neurons from embryonic day 15 and from postnatal day 5 were compared after 1 day *in vitro*. As determined with gramicidin-perforated patch recording, the chloride reversal potential ( $E_{Cl}$ ) was  $-38.6$  mV for the embryonic neurons, whereas the 12-day older postnatal cells showed an  $E_{Cl}$  of  $-57.4$  mV (Chen et al., 1996), a difference of almost 20 mV. If a positive  $E_{Cl}$  was due primarily to neuronal damage, then one would expect the older cells in which axon and dendrite injury would be more severe, to show the more depolarized  $E_{Cl}$ , but this was not seen. In addition, transfection of the outward  $Cl^-$  transporter KCC2 gene into developing neurons that normally have depolarizing GABA responses shifts  $E_{GABA}$  in a negative direction and causes GABA hyperpolarization, in keeping with the developmental sequence of chloride co-transporters (Chudotvorova et al., 2005; Bortone and Polleux, 2009). All these studies indicate that the depolarizing action of GABA is not simply due to injury from slicing.

In addition, *in vitro* studies on the retina use the whole mount preparation. In this preparation, the whole retina is isolated from the eye by sectioning the optic nerve (which consists of the axons of all ganglion cells) and flattened for recording. Hence, although one could argue that these cells are indeed axotomized, the rest of the network is virtually intact, except for a few radial incisions made to flatten the tissue. Despite these radical differences with brain slices, GABA<sub>A</sub> responses are depolarizing/excitatory when the retina is immature, and they switch to their mature hyperpolarizing/inhibitory action very abruptly, especially in mammals. Indeed, pressure applying GABA<sub>A</sub> agonists on the mouse ganglion cell layer depolarizes these cells until P6, and this effect disappears virtually overnight (Zhang et al., 2006). By P7, the same experimental procedure does not depolarize ganglion cells anymore. Hence, it is difficult to reconcile these observations with the argument that depolarizing GABA is an artefact due to tissue slicing and/or metabolic stress.

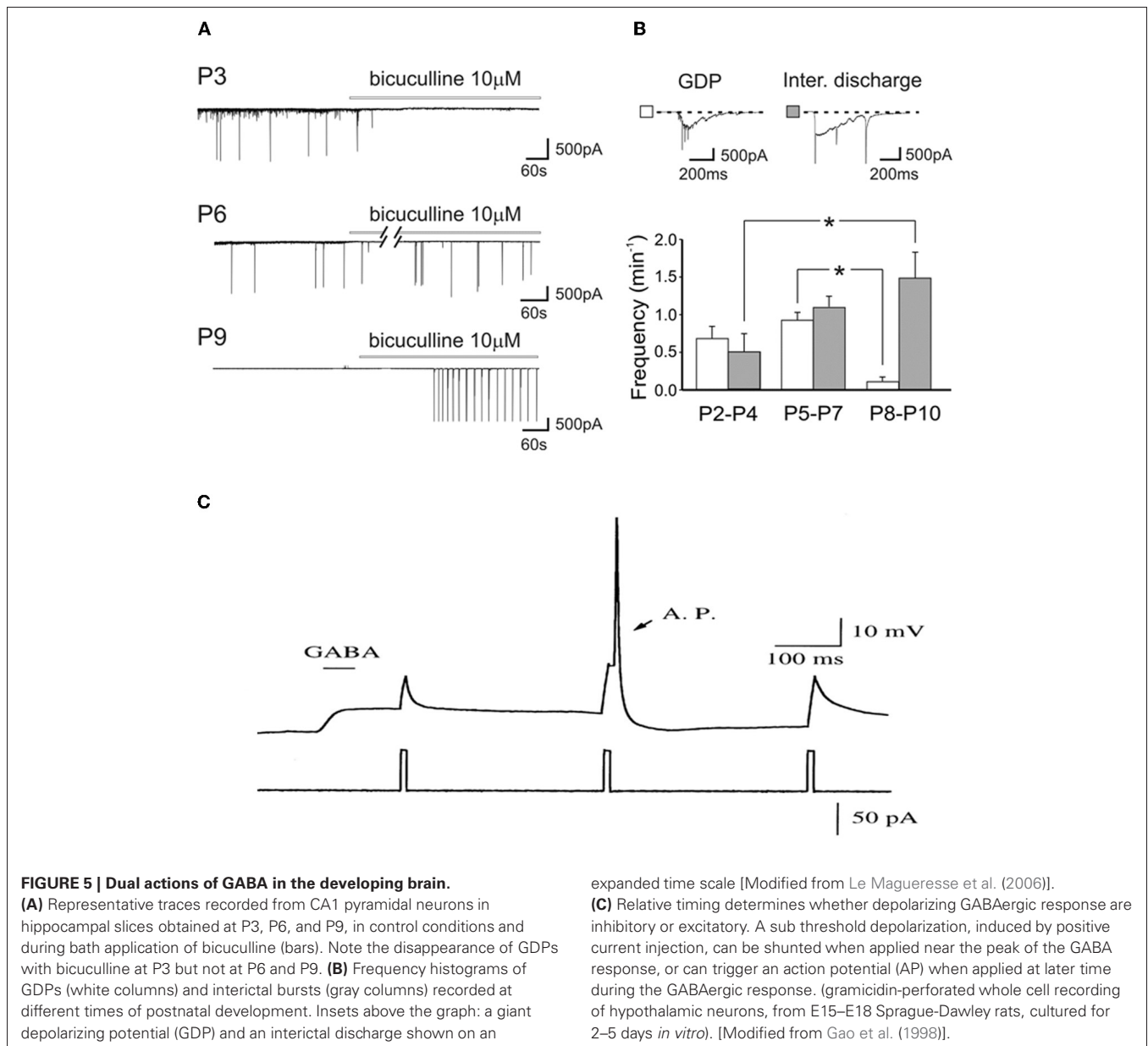
6. If surface damaged neurons require more energy than deeper healthier ones, GABA should depolarize surface neurons in glucose media and hyperpolarize them when ESs are added. It is not reasonable to base a theory on two studies that are incompatible. Indeed, in the study of Zilberter and colleagues (Holmgren et al., 2010), GABA excites all neurons in a slice because they are energy deprived in glucose-perfused conditions; whereas in the study of Dzhala et al. (2012) performed in

glucose-perfused slices, only surface neurons that are damaged are depolarized by GABA: yet deeper ones should be energy deprived as they are perfused with glucose! If Zilberter and colleagues show in the future that surface neurons can be rescued by adding ESs, this would invalidate the conclusions of Dzhala et al. (2012) according to which the damage produced by the slicing procedure, but not the lack of energy substrate, is the cause of depolarizing GABA. One cannot base a model on two incompatible observations: this contradiction precludes a unifying concept.

7. Using *in vitro* hypothalamic slices, Yarom and collaborators have shown that GABA acts in the supra-chiasmatic nucleus as an inhibitory neurotransmitter at night and an excitatory one during in daytime (Wagner et al., 1997). It is difficult to reconcile these features with an energy deprivation and/or surface damage explanation.
8. Depolarizing GABA action persists in newborn neurons in the adult neurogenic zones. In the subventricular zone of neonatal and young adult mice, GABA depolarizing action exerts an important role in the migration and maturation of newborn neurons (Gascon et al., 2006), and the proliferation of neural progenitor cells, a different cell type where GABA is also depolarizing (Bolteus and Bordey, 2004; Young et al., 2010; Taylor et al., 2011). In the young SVZ-olfactory bulb, GABA action shifts from depolarizing to hyperpolarizing between week 2 and 3 after cell birth. This shift is important for cell dendritogenesis during a critical period of cell synaptic integration and plasticity (Taylor et al., 2011). In the adult hippocampal neurogenic zone, GABAergic excitation promotes neuronal differentiation, synaptogenesis, and integration of progenitors into the existing network following a scheme similar to that observed early in postnatal developmental (Ge et al., 2006). Thus, in neonatal as well as adult glucose-perfused slices, newborn olfactory bulb and hippocampal granule cells have depolarizing GABA. How does this fit with an energy supply explanation? Why would the lack of energy supply by glucose affect newborn but not adult neurons in the same slice? In addition, why would newborn olfactory neurons develop GABA before glutamate responses and synapses and rely upon excitatory GABA during their maturation (Carleton et al., 2003; Platel et al., 2008).

## SYNCHRONIZED ACTIVITIES IN IMMATURE NEURONS AND ACTIONS OF GABA RECEPTOR ANTAGONISTS

As GABA<sub>A</sub> receptor antagonists generate inter-ictal discharges in neonatal slices, and trigger seizures in pup rats (Baram and Snead, 1990), Bregestovski and Bernard (2012) conclude that GABA must be inhibitory at that age. However, already in the pivotal 1989 paper, Ben-Ari et al. showed that GABA receptor antagonists first block ongoing activity and then generate seizures (Ben-Ari et al., 1989). It is a common observation that, in pups, bicuculline-induced inter-ictal discharges develop very slowly (often in min) and in comparison with juvenile animals occur at very low frequency and their frequency increases with age (Le Magueresse et al., 2006) (Figures 5A,B). The increase of inter-ictal discharges with age is associated with a concomitant



decrease in frequency of GDPs an effect that cannot be explained by tissue damage. The *in vivo* actions are not surprising since intracellular chloride gradients are different between different cells and different brain structures. In the spinal cord, the shift of GABA from the depolarizing to the hyperpolarizing direction occurs well before the forebrain. In some interneurons synaptic GABA may already be inhibitory at birth (Banke and McBain, 2006) in keeping with their earlier development in comparison to pyramidal neurons (Tyzio et al., 1999; Hennou et al., 2002; Gozlan and Ben-Ari, 2003). As repeatedly stressed, GABA exerts dual actions on immature neurons exciting and inhibiting neurons at the same time even when GABA is strongly depolarizing because of the well known shunting actions of GABA (Andersen et al., 1980; Staley and Mody, 1992; Gao et al., 1998; Gullledge and Stuart, 2003) (Figure 5C).

Using isolated spinal cord preparations from chick or mouse embryos many authors have described an excitatory effect of GABA and glycine at early embryonic developmental stages. Delpy and colleagues have recently demonstrated that embryonic mouse spinal motoneurons *ex vivo* also exhibit a switch of reversal potential of the GABA-induced and glycine-induced currents from excitatory to inhibitory, this switch occurring after E15.5 (Jean-Xavier et al., 2006; Delpy et al., 2008; Stil et al., 2009). Interestingly, this maturation parallels the appearance of left and right alternated locomotor activities in mouse (Branchereau et al., 2000) and rat (Kudo et al., 2004). It is now established that chloride-mediated excitation play a crucial role in the genesis of the spinal cord spontaneous activity both in the chick and in the mouse embryo (O'Donovan, 1999; Branchereau et al., 2000; Hanson and Landmesser, 2003; Ren and Greer, 2003) and in

promoting neurogenesis from the earliest stages of spinal cord embryonic development in the zebrafish (Reynolds et al., 2008).

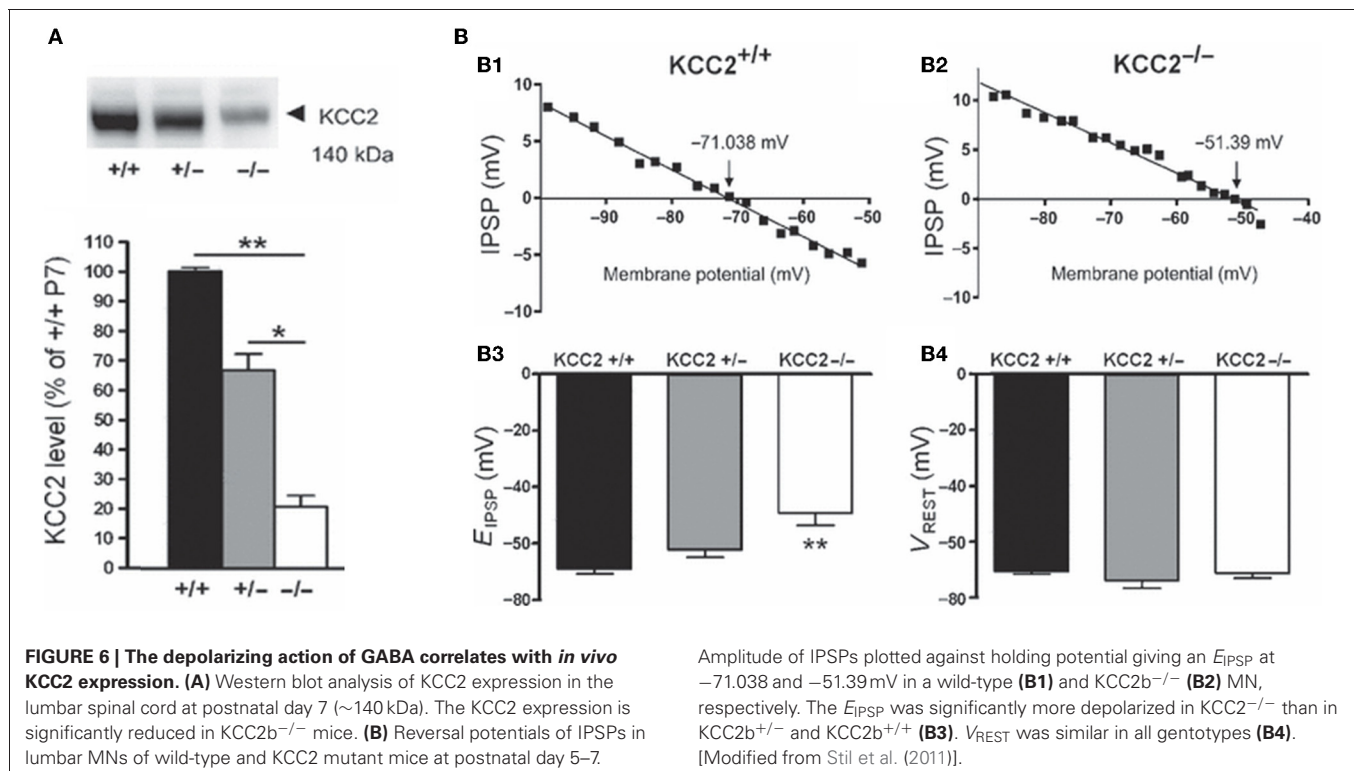
GABA affects the behavior of retinal networks in an age-dependent manner during development. Indeed, the GABA antagonist bicuculline has completely different effects on the dynamics of global spontaneous network activity (retinal waves) before and after P7 (Hennig et al., 2011), which is precisely when GABA switches polarity. Moreover, stable recordings of network activity are readily performed from the neonatal mouse retina continuously for 2–3 days, at relatively slow perfusion rate (about 1 ml/min; Hennig et al., 2011) invalidating the suggestion that these differences are due to perfusion rates (Bregestovski and Bernard, 2012).

### THE KCC2/NKCC1 EXPRESSION PROVIDES A MECHANISTIC SUBSTRATE TO THE ACTION OF GABA

Several lines of evidence suggest that changes in chloride homeostasis are instrumental in setting the direction of GABAergic signaling (Blaesse et al., 2006). In particular, the developmentally-regulated expression of the cation-chloride importer NKCC1 and exporter KCC2 is determinant for the depolarizing action of GABA in immature neurons. KCC2 is the only member of the  $K^+$ - $Cl^-$  co-transporter gene family that is active under physiological conditions, in the absence of osmotic stress (Mercado et al., 2006; Acton et al., 2012). By extruding  $Cl^-$  from the neuron under isotonic conditions, KCC2 maintains a low concentration of neuronal  $Cl^-$ , which is essential for GABA to be inhibitory. However, in many systems, KCC2-mediated  $Cl^-$ -extrusion develops progressively during postnatal life underlying the delayed maturation of hyperpolarizing actions of GABA. During early

developmental stages, KCC2 labeling is largely intracellular on the membranes of transport vesicles (Gulyas et al., 2001) and when present, its actions on spines are not mediated by alteration of chloride gradient (Li et al., 2007). Moreover, the KCC2 that is expressed in the neuronal membrane is mainly monomeric (Blaesse et al., 2006). Efficient KCC2-mediated  $Cl^-$ -extrusion occurs when KCC2 exists in the oligomerized state (Blaesse et al., 2006; Uvarov et al., 2009; Watanabe et al., 2009). Thus, given that KCC2 expression in the neuronal membrane is low during the first postnatal week, coupled with the fact that its expression is largely monomeric, suggests that there is no mechanism for  $Cl^-$  extrusion at this developmental stage, and thus that GABA cannot be hyperpolarizing/inhibitory. That an up-regulation of KCC2 plays a major role in the developmental switch in GABA/glycine signaling has been repeatedly demonstrated by the use of knock-out mice. For instance,  $E_{GABA/glycine}$  is  $\sim 20$  mV more positive in mice lacking the KCC2b isoform than in wild-types, at the same neonatal stage and in identical *in vitro* conditions [glucose as the sole energy substrate (Stil et al., 2011)] (Figure 6). This is confirmed in direct measures of how fast immature and adult neurons remove large chloride influxes generated by applications of pulses of GABA (Nardou et al., 2011).

In pathological conditions, including epilepsy (Cohen et al., 2002; Huberfeld et al., 2007), axonal injury (van den Pol et al., 1996; Nabekura et al., 2002), trauma and osmotic shock (van den Pol et al., 1996), neuropathic pain (Coull et al., 2005), inflammatory hyperalgesia, allodynia (Funk et al., 2008), and neurodegeneration (Lagostena et al., 2010) GABA becomes depolarizing and excitatory in adulthood as well via a change in  $Cl^-$  homeostasis.



The injury-mediated shift to GABA depolarization is due to two independent factors; one is the immediate influx of  $\text{Cl}^-$  and the other may be due to a shift in gene expression that recapitulates the ontogeny of neuronal  $\text{Cl}^-$  homeostasis and consequently, GABA actions (van den Pol et al., 1996). How can these observations be reconciled with an energy insufficiency of glucose or a slice damage of surface neurons? In addition, several observations also indicate that a low KCC2 membrane expression contributes to the development of epileptiform discharges in adult hippocampal slices from epileptic patients (Cohen et al., 2002; Huberfeld et al., 2007). Using the triple chamber with the two interconnected hippocampi placed in their independent chambers, the formation by recurrent seizures of an epileptogenic mirror focus in the naïve contralateral hippocampus is associated with a persistent loss of KCC2 and reduced capacity of epileptic neurons to expel chloride (Nardou et al., 2011). In addition, age matched slices prepared from naïve intact hippocampi and epileptic ones generate, respectively, GDPs and interictal activities invalidating a damage explanation. Clearly, enhanced episodes of activity or seizures, acting on KCC2 (or NKCC1), alter the polarity of GABA actions via tyrosine phosphorylation mediated internalization of KCC2. This results in profound *in vivo* and *in vitro* consequences on epileptogenicity (Lee et al., 2010, 2011).

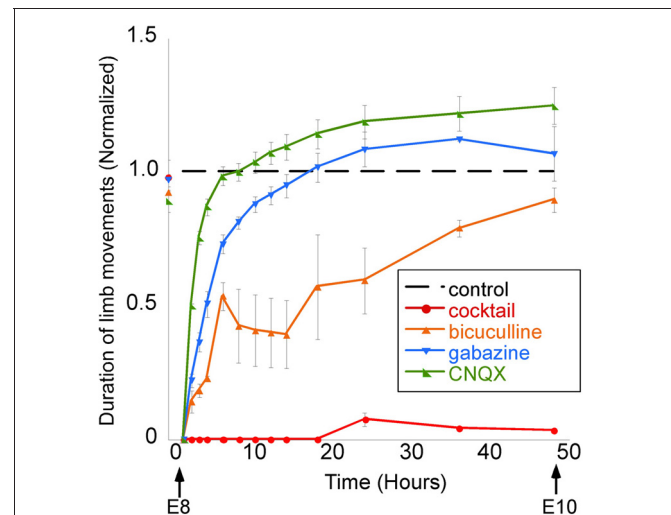
In addition, hippocampal slices obtained from adult (6 months old) mice chronically deprived of NGF, in comparison to age-matched controls, exhibit depolarizing and excitatory responses to GABA (Lagostena et al., 2010). Interestingly, these effects were found to be associated with a reduced expression of the mRNA encoding for *Kcc2* and for  $\alpha 7$  nicotinic acetylcholine receptors (thought to control the expression of KCC2) and to play an instrumental role in the shift of GABA from the depolarizing to the hyperpolarizing direction (Liu et al., 2006; Lozada et al., 2012). Transgenic mice with decreased expression of KCC2 are more susceptible to pentylenetetrazole-induced seizures (Törnberg et al., 2005) and full KCC2 KO mice die at birth with seizures (Khalilov et al., 2011). Mice with targeted deletion of the KCCb isoform exhibit spontaneous generalized seizures and die before the third postnatal week (Woo et al., 2002). Collectively, these observations reflect the importance of early chloride regulation.

The low expression of KCC2 accounts also for synapse driven  $\text{GABA}_A$ -mediated membrane depolarization and the burst firing observed in reticular nucleus neurons in thalamic slices from P13–P35 old mice (Sun et al., 2012). A high expression of NKCC1 accounts for the depolarizing effect of GABA in dorsal root ganglion cells in culture (isolated from 6–12 weeks-old mice; i.e., not immature) as shown by the  $\sim 20$  mV negative shift of  $E_{\text{GABA}}$  in cells isolated from NKCC1 knock-out mice (Sung et al., 2000). Furthermore, the imbalance between NKCC1 and KCC2 may affect GABA action in some cell compartments but not in others as for instance in the initial axon segment where the lack of KCC2 is responsible for GABA-induced membrane depolarization in adult cortical principal neurons (Khirug et al., 2008). It is worth noting that in adult dentate granule cells, the depolarizing action of GABA is independent of the KCC2/NKCC1 unbalance but is set by the unusual

hyperpolarized value of  $V_{\text{rest}}$ , well below  $E_{\text{GABA}}$  (Staley and Mody, 1992; Kraushaar and Jonas, 2000; Chiang et al., 2012; Sauer et al., 2012). Nevertheless, knocking out NKCC1 in newborn hippocampal granule cells in adult, in newborn olfactory bulb neurons in neonate, and in newborn embryonic neurons led to a premature shift in GABA depolarizing action (Ge et al., 2006; Wang and Kriegstein, 2008; Taylor et al., 2011). All these observations provide compelling evidence that the depolarizing action of GABA is a fundamental property of developing systems and not due to cell injury following the slicing procedure in neonates.

### THE POLARITY OF GABA ACTIONS SHIFTS DURING DEVELOPMENT IN NON-MAMMALIAN SPECIES *In vivo* AND *In vitro*

The proposal that GABA may not be depolarizing in developing neurons *in vivo* is further disputed by the results of studies showing that the *in vivo* application of GABA antagonists inhibits the spinally generated limb movements (Wilhelm and Wenner, 2008). In the mid-gestation embryonic chick, injecting GABA antagonists (bicuculline or gabazine) into the egg blocked or reduced the duration of spinally generated embryonic movements for several hours, which was an even more effective block than *in ovo* application of an AMPA receptor antagonist (Wilhelm and Wenner, 2008) (Figure 7). On the other hand, in the late-gestation embryonic chick, injection of bicuculline had the opposite effect (increased movements), suggesting GABA had become inhibitory at later stages (Sedlacek, 1985).



**FIGURE 7 | GABAergic or glutamatergic receptors can be chronically blocked without a prolonged reduction of spontaneous network activity.** Graph of the average amount of time chick embryos moved during a 5-min period of observation, obtained once every 0.5–12 h. Data are normalized to control values at each observation time point/stage, thus producing the dotted line for comparison. Treatment with a single receptor antagonist transiently reduces embryonic movements; however, movements return to control levels within 12 h. A mixture of gabazine, CNQX, strychnine, and APV nearly abolished limb movements for 48 h. [Modified from Wilhelm and Wenner (2008)].

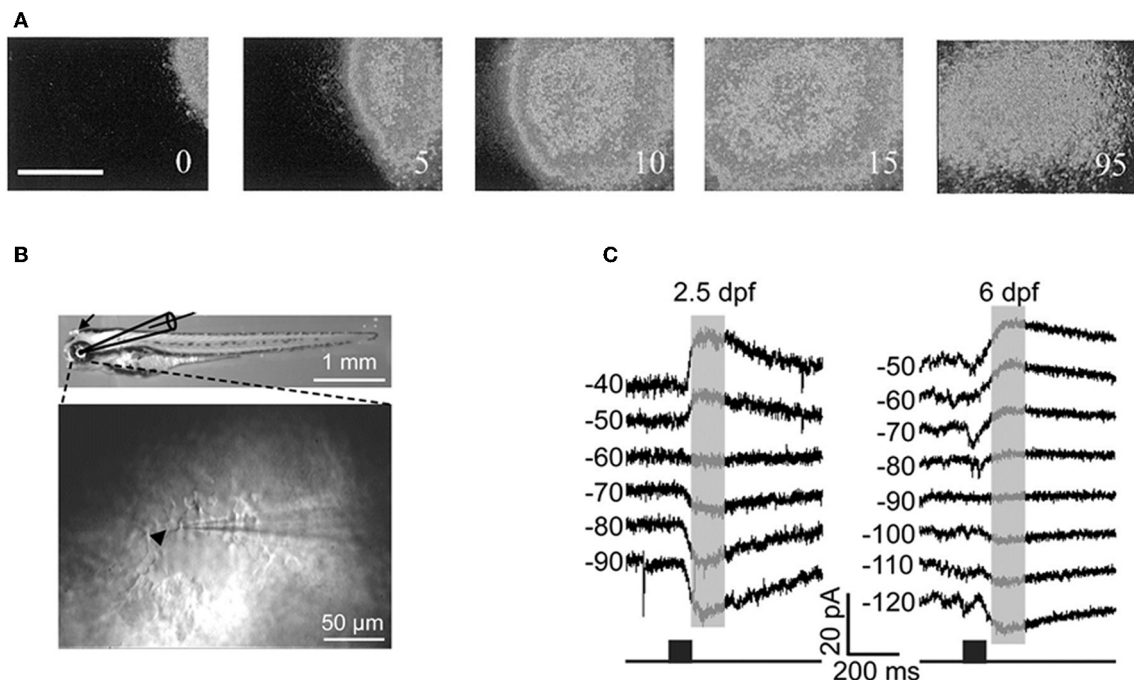
Cold-blooded vertebrates are far more resistant to anoxia and metabolic stress than mammals. Yet, in the developing turtle retina, GABA depolarizes ganglion cells in the embryo and becomes involved in controlling the dynamics of retinal waves at embryonic stage 25, one week before hatching (S26) (Sernagor et al., 2003) (Figure 8A). Interestingly, bath application of low doses of bicuculline at S25 completely blocks the occurrence of the waves, suggesting that GABA provides a baseline level of excitation that is necessary to trigger the waves. GABA gradually switches to become inhibitory by hatching time, as reflected by a change in wave dynamics: waves gradually slow down and shrink, eventually becoming stationary patches. Bath application of bicuculline at hatching reverts the activity to propagating waves, as in earlier embryonic networks. GABA keeps slowly shifting to its full inhibitory power during the first few weeks post-hatching, hence the process is much slower than in mammals.

More recently, Zhang and collaborators performed *in vivo* gramicidin perforated patch clamp recording in intact zebrafish larvae to characterize the developmental change of GABA actions in retinal ganglion cells (RGCs) (Zhang et al., 2010). They reported that zebrafish RGCs exhibited a depolarizing-hyperpolarizing (D-H) shift in GABA action at 2.5 days post-fertilization and D-H switch is delayed following down-regulation of KCC2 (Figures 8B,C). These observations are consistent with the developmental profile of KCC2 expression in

zebrafish and with the neurogenic roles of depolarizing chloride revealed by global early over-expression of KCC2 (Reynolds et al., 2008). These observations further invalidate the suggestions of Bregestovski and Bernard.

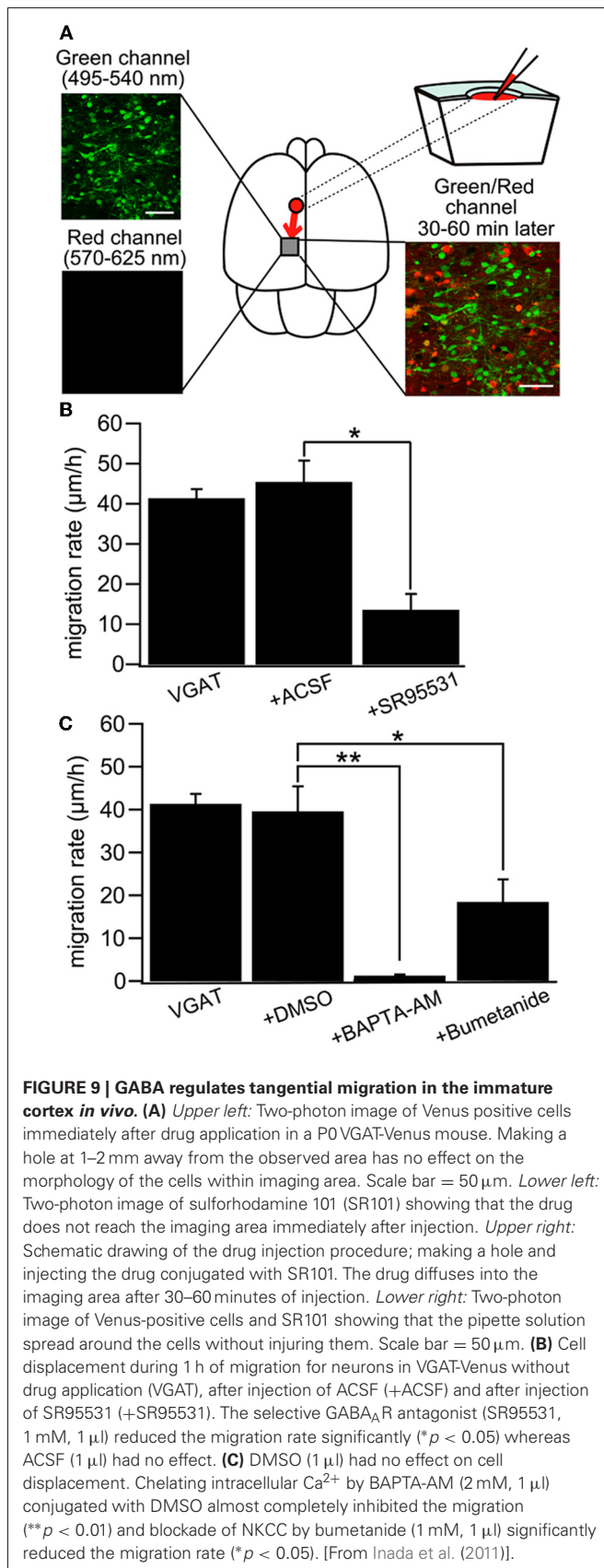
### THE ISSUE OF *In vivo* STUDIES IN RODENTS

Intuitively, *in vivo* studies are needed to confirm or reject the depolarizing/excitatory actions of GABA. Yet, things are more complex and *in vivo* studies particularly in rodent pups suffer from substantive severe potential handicaps. It is not possible to perform chronic recordings during the first postnatal days because of brain and bone growth. Many anaesthetic agents shift the polarity of GABA and augment inhibition rendering the interpretation of results obtained in these conditions difficult (Desfeux et al., 2010; Ando et al., 2011; McNally et al., 2011). Acute un-anaesthetized recordings generate even more complications both because of pain and ethical issues but also due to the release of adrenaline and other stress agents that may shift the polarity of GABA actions. Comparing *in vitro* experiments where  $E_{GABA}$  was determined in adequately controlled conditions to the excitation/inhibition produced by GABA agonists on extracellular recording of firing is of limited value since two different parameters are being measured. The difficulty of recordings from identified neuronal populations is yet another severe handicap. Yet, in spite of these limitations, several *in vivo* studies confirm the developmental shift. Tangential migration



**FIGURE 8 | GABA is excitatory in non-mammals retina both *in vivo* and *in vitro*.** (A) Time-lapse images of a GABA-induced wave in a S25 turtle retina. [Modified from Sernagor et al. (2003)]. (B) Diagram of *in vitro* whole-cell recording in intact zebrafish larvae. Top: bright-field image of whole-body morphology of a 3 dpf larva with removal of the lens (arrow). (C) GABA-induced currents recorded from two Retinal

ganglion cells by using gramicidin perforated-patch whole-cell recording [left: 2.5 days post-fertilization (dpf); right: 6 dpf] at different membrane potentials (in mV). The currents were evoked by focal application of GABA (black squares) near RGC soma. Note the developmental shift in the reversal potential of GABA-induced currents. [B and C modified from Zhang et al. (2010)].



of GABA neurons is dependent on depolarizing GABA<sub>A</sub> receptor activation and a reduction in intracellular Cl<sup>-</sup> by KCC2 expression is sufficient for reducing interneuron motility by decreasing GABA depolarization (Bortone and Polleux, 2009). This study was carried out by using slice culture, but the results are quite compatible to that of a recent study with newborn mice *in vivo* that indicated NKCC1-dependent ambient GABA-mediated depolarization facilitates multidirectional tangential migration of GABAergic interneurons lacking KCC2 expression (Inada et al., 2011). In this model, applications of GABA antagonists, the NKCC1 antagonist bumetanide or the calcium chelator BAPTA delayed tangential migration (Figure 9) [also see (Wang and Kriegstein, 2008)]. Interestingly, radial migration also requires high intracellular Cl<sup>-</sup> as applications of GABA receptor antagonists to slice cultures or subdural to neonatal rats accelerated radial migration (Heck et al., 2007; Manent and Represa, 2007).

## CONCLUSIONS

The observations of the Zilberters and colleagues have been repeatedly contradicted and suffer from severe drawbacks. Perhaps most importantly, there are intrinsic contradictions between the references they put forward to substantiate their hypothesis and the conclusions drawn from these studies.

In conclusion, the overwhelming convergence of observations made in a wide range of animal species and preparations confirm the developmental sequence of the polarity of GABA as a genuine fundamental feature of developmental neurobiology. This is another illustration of the developmental sequences that occur with all voltage and transmitter gated currents reflecting the major differences between the developing and adult brain: the developing brain is not a small adult brain. The most compelling evidence in favor of this sequence is simply that it is present. The alternative concept—that GABA exerts the same hyperpolarizing action across the entire developmental stage—is not even suggested by Zilberter and colleagues as they consider the excitatory GABA actions on embryonic neurons non refutable. Challenging the shift would be incongruent with the developmental sequences of all voltage and transmitter gated currents and with the well demonstrated trophic roles of GABA at an early stage that relies on excitatory GABA. GABAergic currents are like others long lasting because of a different subunit composition and directly involved in fundamental developmental mechanisms including cell division, migration and synapse and network formation. These elements cannot be refuted on the basis of damage and/or metabolism. Good healthy neurons like the patterns they generate are readily identified by trained scientists relying on criteria that remain as good today as they were decades ago. The available preparations offer a wide range of resources to better understand the roles of depolarizing GABA and the modulation of the timing in different systems, there is no need to alter their composition.

## ACKNOWLEDGMENTS

We are grateful to A. Kriegstein for his suggestions and to G. Huberfeld for providing his unpublished observations.

## REFERENCES

- Achilles, K., Okabe, A., Ikeda, M., Shimizu-Okabe, C., Yamada, J., Fukuda, A., Luhmann, H. J., and Kilb, W. (2007). Kinetic properties of Cl uptake mediated by Na<sup>+</sup>-dependent K<sup>+</sup>-2Cl cotransport in immature rat neocortical neurons. *J. Neurosci.* 27, 8616–8627.
- Acton, B. A., Mahadevan, V., Mercado, A., Uvarov, P., Ding, Y., Pressey, J., Airaksinen, M. S., Mount, D. B., and Woodin, M. A. (2012). Hyperolparzing GABAergic transmission requires the KCC2 C-terminal ISO domain. *J. Neurosci.* 32, 8746–8751.
- Akerman, C. J., and Cline, H. T. (2006). Depolarizing GABAergic conductances regulate the balance of excitation to inhibition in the developing retinotectal circuit *in vivo*. *J. Neurosci.* 26, 5117–5130.
- Andersen, P., Dingleline, R., Gjerstad, L., Langmoen, I. A., and Laursen, A. M. (1980). Two different responses of hippocampal pyramidal cells to application of gamma-amino butyric acid. *J. Physiol.* 305, 279–296.
- Ando, Y., Hojo, M., Kanaide, M., Takada, M., Sudo, Y., Shiraishi, S., Sumikawa, K., and Uezono, Y. (2011). S(+)-ketamine suppresses desensitization of gamma-aminobutyric acid type B receptor-mediated signaling by inhibition of the interaction of gamma-aminobutyric acid type B receptors with G protein-coupled receptor kinase 4 or 5. *Anesthesiology* 114, 401–411.
- Balena, T., and Woodin, M. A. (2008). Coincident pre- and postsynaptic activity downregulates NKCC1 to hyperpolarize E(Cl) during development. *Eur. J. Neurosci.* 27, 2402–2412.
- Banke, T. G., and McBain, C. J. (2006). GABAergic input onto CA3 hippocampal interneurons remains shunting throughout development. *J. Neurosci.* 26, 11720–11725.
- Baram, T. Z., and Snead, O. C. (1990). Bicuculline induced seizures in infant rats: ontogeny of behavioral and electrocortical phenomena. *Brain Res. Dev. Brain Res.* 57, 291–295.
- Barkis, W. B., Ford, K. J., and Feller, M. B. (2010). Non-cell-autonomous factor induces the transition from excitatory to inhibitory GABA signaling in retina independent of activity. *Proc. Natl. Acad. Sci. U.S.A.* 107, 22302–22307.
- Ben-Ari, Y. (2001). Developing networks play a similar melody. *Trends Neurosci.* 24, 353–360.
- Ben-Ari, Y. (2002). Excitatory actions of gaba during development: the nature of the nurture. *Nat. Rev. Neurosci.* 3, 728–739.
- Ben-Ari, Y., Cherubini, E., Corradetti, R., and Gaiarsa, J. L. (1989). Giant synaptic potentials in immature rat CA3 hippocampal neurones. *J. Physiol.* 416, 303–325.
- Ben-Ari, Y., Gaiarsa, J. L., Tyzio, R., and Khazipov, R. (2007). GABA: a pioneer transmitter that excites immature neurons and generates primitive oscillations. *Physiol. Rev.* 87, 1215–1284.
- Ben-Ari, Y., Khazipov, R., Leinekugel, X., Caillard, O., and Gaiarsa, J. L. (1997). GABAA, NMDA and AMPA receptors: a developmentally regulated 'menage a trois'. *Trends Neurosci.* 20, 523–529.
- Blaesse, P., Airaksinen, M. S., Rivera, C., and Kaila, K. (2009). Cation-chloride cotransporters and neuronal function. *Neuron* 61, 820–838.
- Blaesse, P., Guillemin, I., Schindler, J., Schweizer, M., Delpire, E., Khiroug, L., Friauf, E., and Nothwang, H. G. (2006). Oligomerization of KCC2 correlates with development of inhibitory neurotransmission. *J. Neurosci.* 26, 10407–10419.
- Bolteus, A. J., and Bordey, A. (2004). GABA release and uptake regulate neuronal precursor migration in the postnatal subventricular zone. *J. Neurosci.* 24, 7623–7631.
- Bonifazi, P., Goldin, M., Picardo, M. A., Jorquera, I., Cattani, A., Bianconi, G., Represa, A., Ben-Ari, Y., and Cossart, R. (2009). GABAergic hub neurons orchestrate synchrony in developing hippocampal networks. *Science* 326, 1419–1424.
- Bortone, D., and Polleux, F. (2009). KCC2 expression promotes the termination of cortical interneuron migration in a voltage-sensitive calcium-dependent manner. *Neuron* 62, 53–71.
- Bos, R., and Vinay, L. (2012). Glucose is an adequate energy substrate for the depolarizing action of GABA and glycine in the neonatal rat spinal cord *in vitro*. *J. Neurophysiol.* 107, 3107–3115.
- Branchereau, P., Morin, D., Bonnot, A., Ballion, B., Chapron, J., and Viala, D. (2000). Development of lumbar rhythmic networks: from embryonic to neonate locomotor-like patterns in the mouse. *Brain Res. Bull.* 53, 711–718.
- Bregestovski, P., and Bernard, C. (2012). Excitatory GABA: how a correct observation may turn out to be an experimental artifact. *Front. Pharmacol.* 3:65. doi: 10.3389/fphar.2012.00065
- Bregestovski, P., Waseem, T., and Mukhtarov, M. (2009). Genetically encoded optical sensors for monitoring of intracellular chloride and chloride-selective channel activity. *Front. Mol. Neurosci.* 2:15. doi: 10.3389/neuro.02.015.2009
- Caillard, O., Ben-Ari, Y., and Gaiarsa, J. L. (1999). Mechanisms of induction and expression of long-term depression at GABAergic synapses in the neonatal rat hippocampus. *J. Neurosci.* 19, 7568–7577.
- Carleton, A., Petreanu, L. T., Lansford, R., Alvarez-Buylla, A., and Lledo, P. M. (2003). Becoming a new neuron in the adult olfactory bulb. *Nat. Neurosci.* 6, 507–518.
- Chen, G., Trombley, P. Q., and van den Pol, A. N. (1996). Excitatory actions of GABA in developing rat hypothalamic neurones. *J. Physiol.* 494(Pt 2), 451–464.
- Cherubini, E., Ben-Ari, Y., and Krnjevic, K. (1989). Anoxia produces smaller changes in synaptic transmission, membrane potential, and input resistance in immature rat hippocampus. *J. Neurophysiol.* 62, 882–895.
- Chiang, P. H., Wu, P. Y., Kuo, T. W., Liu, Y. C., Chan, C. F., Chien, T. C., Cheng, J. K., Huang, Y. Y., Chiu, C. D., and Lien, C. C. (2012). GABA is depolarizing in hippocampal dentate granule cells of the adolescent and adult rats. *J. Neurosci.* 32, 62–67.
- Chub, N., and O'Donovan, M. J. (2001). Post-episode depression of GABAergic transmission in spinal neurons of the chick embryo. *J. Neurophysiol.* 85, 2166–2176.
- Chudotvorova, I., Ivanov, A., Rama, S., Hubner, C. A., Pellegrino, C., Ben-Ari, Y., and Medina, I. (2005). Early expression of KCC2 in rat hippocampal cultures augments expression of functional GABA synapses. *J. Physiol.* 566, 671–679.
- Cohen, I., Navarro, V., Clemenceau, S., Baulac, M., and Miles, R. (2002). On the origin of interictal activity in human temporal lobe epilepsy *in vitro*. *Science* 298, 1418–1421.
- Coull, J. A., Beggs, S., Boudreau, D., Boivin, D., Tsuda, M., Inoue, K., Gravel, C., Salter, M. W., and De, K. Y. (2005). BDNF from microglia causes the shift in neuronal anion gradient underlying neuropathic pain. *Nature* 438, 1017–1021.
- Cserep, C., Szabadits, E., Szonyi, A., Watanabe, M., Freund, T. F., and Nyiri, G. (2012). NMDA receptors in GABAergic synapses during postnatal development. *PLoS ONE* 7:e37753. doi: 10.1371/journal.pone.0037753
- Delpy, A., Allain, A. E., Meyrand, P., and Branchereau, P. (2008). NKCC1 cotransporter inactivation underlies embryonic development of chloride-mediated inhibition in mouse spinal motoneuron. *J. Physiol.* 586, 1059–1075.
- Desfeux, A., El, G. F., Jegou, S., Legros, H., Marret, S., Laudenbach, V., and Gonzalez, B. J. (2010). Dual effect of glutamate on GABAergic interneuron survival during cerebellar cortex development in mice neonates. *Cereb. Cortex* 20, 1092–1108.
- Dzhala, V., Valeeva, G., Glykys, J., Khazipov, R., and Staley, K. (2012). Traumatic alterations in GABA signaling disrupt hippocampal network activity in the developing brain. *J. Neurosci.* 32, 4017–4031.
- Dzhala, V. L., and Staley, K. J. (2003). Excitatory actions of endogenously released GABA contribute to initiation of ictal epileptiform activity in the developing hippocampus. *J. Neurosci.* 23, 1840–1846.
- Fischer, K. F., Lukasiewicz, P. D., and Wong, R. O. (1998). Age-dependent and cell class-specific modulation of retinal ganglion cell bursting activity by GABA. *J. Neurosci.* 18, 3767–3778.
- Fiumelli, H., Cancedda, L., and Poo, M. M. (2005). Modulation of GABAergic transmission by activity via postsynaptic Ca<sup>2+</sup>-dependent regulation of KCC2 function. *Neuron* 48, 773–786.
- Frick, A., Feldmeyer, D., Helmstaedter, M., and Sakmann, B. (2008). Monosynaptic connections between pairs of L5A pyramidal neurons in columns of juvenile rat somatosensory cortex. *Cereb. Cortex* 18, 397–406.
- Funk, K., Woitecki, A., Franjic-Wurtz, C., Gensch, T., Mohrlen, F., and Frings, S. (2008). Modulation of chloride homeostasis by inflammatory mediators in dorsal root ganglion neurons. *Mol. Pain* 4, 32.
- Galanopoulou, A. S. (2008a). Dissociated gender-specific effects of recurrent seizures on GABA signaling in CA1 pyramidal neurons: role of GABA(A) receptors. *J. Neurosci.* 28, 1557–1567.
- Galanopoulou, A. S. (2008b). Sexually dimorphic expression of KCC2 and GABA function. *Epilepsy Res.* 80, 99–113.
- Galanopoulou, A. S., Kyrozis, A., Claudio, O. I., Stanton, P. K., and Moshe, S. L. (2003). Sex-specific KCC2 expression and GABA(A) receptor function in rat substantia nigra. *Exp. Neurol.* 183, 628–637.
- Ganguly, K., Schinder, A. F., Wong, S. T., and Poo, M. (2001). GABA itself

- promotes the developmental switch of neuronal GABAergic responses from excitation to inhibition. *Cell* 105, 521–532.
- Gao, X. B., Chen, G., van den Pol, A. N. (1998). GABA-dependent firing of glutamate-evoked action potentials at AMPA/kainate receptors in developing hypothalamic neurons. *J. Neurophysiol.* 79, 716–726.
- Gao, X. B., van den Pol, A. N. (2000). GABA release from mouse axonal growth cones. *J. Physiol.* 523(Pt 3), 629–637.
- Gao, X. B., van den Pol, A. N. (2001). GABA, not glutamate, a primary transmitter driving action potentials in developing hypothalamic neurons. *J. Neurophysiol.* 85, 425–434.
- Gascon, E., Dayer, A. G., Sauvain, M. O., Potter, G., Jenny, B., De, R. M., Zraggen, E., Demareux, N., Muller, D., and Kiss, J. Z. (2006). GABA regulates dendritic growth by stabilizing lamellipodia in newly generated interneurons of the olfactory bulb. *J. Neurosci.* 26, 12956–12966.
- Ge, S., Goh, E. L., Sailor, K. A., Kitabatake, Y., Ming, G. L., and Song, H. (2006). GABA regulates synaptic integration of newly generated neurons in the adult brain. *Nature* 439, 589–593.
- Gonzalez-Islas, C., Chub, N., Garcia-Bereguiani, M. A., and Wenner, P. (2010). GABAergic synaptic scaling in embryonic motoneurons is mediated by a shift in the chloride reversal potential. *J. Neurosci.* 30, 13016–13020.
- Gonzalez-Islas, C., Chub, N., and Wenner, P. (2009). NKCC1 and AE3 appear to accumulate chloride in embryonic motoneurons. *J. Neurophysiol.* 101, 507–518.
- Gozlan, H., and Ben-Ari, Y. (2003). Interneurons are the source and the targets of the first synapses formed in the rat developing hippocampal circuit. *Cereb. Cortex* 13, 684–692.
- Gulledge, A. T., and Stuart, G. J. (2003). Excitatory actions of GABA in the cortex. *Neuron* 37, 299–309.
- Gulyas, A. I., Sik, A., Payne, J. A., Kaila, K., and Freund, T. F. (2001). The KCl cotransporter, KCC2, is highly expressed in the vicinity of excitatory synapses in the rat hippocampus. *Eur. J. Neurosci.* 13, 2205–2217.
- Hanson, M. G., and Landmesser, L. T. (2003). Characterization of the circuits that generate spontaneous episodes of activity in the early embryonic mouse spinal cord. *J. Neurosci.* 23, 587–600.
- He, S., Ma, J., Liu, N., and Yu, X. (2010). Early enriched environment promotes neonatal GABAergic neurotransmission and accelerates synapse maturation. *J. Neurosci.* 30, 7910–7916.
- Heck, N., Kilb, W., Reiprich, P., Kubota, H., Furukawa, T., Fukuda, A., and Luhmann, H. J. (2007). GABA-A receptors regulate neocortical neuronal migration *in vitro* and *in vivo*. *Cereb. Cortex* 17, 138–148.
- Hennig, M. H., Grady, J., van, C. J., and Sernagor, E. (2011). Age-dependent homeostatic plasticity of GABAergic signaling in developing retinal networks. *J. Neurosci.* 31, 12159–12164.
- Hennou, S., Khalilov, I., Diabira, D., Ben-Ari, Y., and Gozlan, H. (2002). Early sequential formation of functional GABA(A) and glutamatergic synapses on CA1 interneurons of the rat foetal hippocampus. *Eur. J. Neurosci.* 16, 197–208.
- Holmgren, C. D., Mukhtarov, M., Malkov, A. E., Popova, I. Y., Bregestovski, P., and Zilberter, Y. (2010). Energy substrate availability as a determinant of neuronal resting potential, GABA signaling and spontaneous network activity in the neonatal cortex *in vitro*. *J. Neurochem.* 112, 900–912.
- Huberfeld, G., Wittner, L., Clemenceau, S., Baulac, M., Kaila, K., Miles, R., and Rivera, C. (2007). Perturbed chloride homeostasis and GABAergic signaling in human temporal lobe epilepsy. *J. Neurosci.* 27, 9866–9873.
- Inada, H., Watanabe, M., Uchida, T., Ishibashi, H., Wake, H., Nemoto, T., Yanagawa, Y., Fukuda, A., and Nabekura, J. (2011). GABA regulates the multidirectional tangential migration of GABAergic interneurons in living neonatal mice. *PLoS ONE* 6:e27048. doi: 10.1371/journal.pone.0027048
- Ivanov, A., Mukhtarov, M., Bregestovski, P., and Zilberter, Y. (2011). Lactate effectively covers energy demands during neuronal network activity in neonatal hippocampal slices. *Front. Neuroenergetics* 3:2. doi: 10.3389/fnene.2011.00002
- Jean-Xavier, C., Pflieger, J. F., Liabeuf, S., and Vinay, L. (2006). Inhibitory postsynaptic potentials in lumbar motoneurons remain depolarizing after neonatal spinal cord transection in the rat. *J. Neurophysiol.* 96, 2274–2281.
- Johnson, J., Tian, N., Caywood, M. S., Reimer, R. J., Edwards, R. H., and Copenhagen, D. R. (2003). Vesicular neurotransmitter transporter expression in developing postnatal rodent retina: GABA and glycine precede glutamate. *J. Neurosci.* 23, 518–529.
- Khakhalin, A. S., and Aizenman, C. D. (2012). GABAergic transmission and chloride equilibrium potential are not modulated by pyruvate in the developing optic tectum of *Xenopus laevis* tadpoles. *PLoS ONE* 7:e34446. doi: 10.1371/journal.pone.0034446
- Khalilov, I., Chazal, G., Chudotvorova, I., Pellegrino, C., Corby, S., Ferrand, N., Gubkina, O., Nardou, R., Tyzio, R., Yamamoto, S., Jentsch, T. J., Hubner, C. A., Gaiarsa, J. L., Ben-Ari, Y., and Medina, I. (2011). Enhanced synaptic activity and epileptiform events in the embryonic KCC2 deficient hippocampus. *Front. Cell Neurosci.* 5:23. doi: 10.3389/fncel.2011.00023
- Khalilov, I., Esclapez, M., Medina, I., Aggoun, D., Lamsa, K., Leinekugel, X., Khazipov, R., and Ben-Ari, Y. (1997). A novel *in vitro* preparation: the intact hippocampal formation. *Neuron* 19, 743–749.
- Khazipov, R., Esclapez, M., Caillard, O., Bernard, C., Khalilov, I., Tyzio, R., Hirsch, J., Dzhal, V., Berger, B., and Ben-Ari, Y. (2001). Early development of neuronal activity in the primate hippocampus in utero. *J. Neurosci.* 21, 9770–9781.
- Khazipov, R., Leinekugel, X., Khalilov, I., Gaiarsa, J. L., and Ben-Ari, Y. (1997). Synchronization of GABAergic interneuronal network in CA3 subfield of neonatal rat hippocampal slices. *J. Physiol.* 498(Pt 3), 763–772.
- Khirug, S., Huttu, K., Ludwig, A., Smirnov, S., Voipio, J., Rivera, C., Kaila, K., and Khiroug, L. (2005). Distinct properties of functional KCC2 expression in immature mouse hippocampal neurons in culture and in acute slices. *Eur. J. Neurosci.* 21, 899–904.
- Khirug, S., Yamada, J., Afzalov, R., Voipio, J., Khiroug, L., and Kaila, K. (2008). GABAergic depolarization of the axon initial segment in cortical principal neurons is caused by the Na-K-2Cl cotransporter NKCC1. *J. Neurosci.* 28, 4635–4639.
- Kilb, W., Ikeda, M., Uchida, K., Okabe, A., Fukuda, A., and Luhmann, H. J. (2002). Depolarizing glycine responses in Cajal-Retzius cells of neonatal rat cerebral cortex. *Neuroscience* 112, 299–307.
- Kirmse, K., Witte, O. W., and Holthoff, K. (2010). GABA depolarizes immature neocortical neurons in the presence of the ketone body  $\beta$ -hydroxybutyrate. *J. Neurosci.* 30, 16002–16007.
- Kolbaev, S. N., Achilles, K., Luhmann, H. J., and Kilb, W. (2011a). Effect of depolarizing GABA(A)-mediated membrane responses on excitability of Cajal-Retzius cells in the immature rat neocortex. *J. Neurophysiol.* 106, 2034–2044.
- Kolbaev, S. N., Luhmann, H. J., and Kilb, W. (2011b). Activity-dependent scaling of GABAergic excitation by dynamic Cl<sup>-</sup> changes in Cajal-Retzius cells. *Pflugers Arch.* 461, 557–565.
- Kraushaar, U., and Jonas, P. (2000). Efficacy and stability of quantal GABA release at a hippocampal interneuron-principal neuron synapse. *J. Neurosci.* 20, 5594–5607.
- Krnjevic, K., Cherubini, E., and Ben-Ari, Y. (1989). Anoxia on slow inward currents of immature hippocampal neurons. *J. Neurophysiol.* 62, 896–906.
- Kudo, N., Nishimaru, H., and Nakayama, K. (2004). Developmental changes in rhythmic spinal neuronal activity in the rat fetus. *Prog. Brain Res.* 143, 49–55.
- Kuner, T., and Augustine, G. J. (2000). A genetically encoded ratiometric indicator for chloride: capturing chloride transients in cultured hippocampal neurons. *Neuron* 27, 447–459.
- Lagostena, L., Rosato-Siri, M., D'Onofrio, M., Brandi, R., Arisi, I., Capsoni, S., Franzot, J., Cattaneo, A., and Cherubini, E. (2010). In the adult hippocampus, chronic nerve growth factor deprivation shifts GABAergic signaling from the hyperpolarizing to the depolarizing direction. *J. Neurosci.* 30, 885–893.
- Landmesser, L. T., and O'Donovan, M. J. (1984). Activation patterns of embryonic chick hind limb muscles recorded *in ovo* and in an isolated spinal cord preparation. *J. Physiol.* 347, 189–204.
- Le Magueresse, C., Safiulina, V., Changeux, J. P., and Cherubini, E. (2006). Nicotinic modulation of network and synaptic transmission in the immature hippocampus investigated with genetically modified mice. *J. Physiol.* 576, 533–546.
- Lee, H. H., Deeb, T. Z., Walker, J. A., Davies, P. A., and Moss, S. J. (2011). NMDA receptor activity downregulates KCC2 resulting in depolarizing GABA(A) receptor-mediated currents. *Nat. Neurosci.* 14, 736–743.
- Lee, H. H., Jurd, R., and Moss, S. J. (2010). Tyrosine phosphorylation regulates the membrane trafficking of the potassium chloride co-transporter KCC2. *Mol. Cell Neurosci.* 45, 173–179.
- Leinekugel, X., Khalilov, I., Ben-Ari, Y., and Khazipov, R. (1998). Giant depolarizing potentials: the septal



- pole of the hippocampus paces the activity of the developing intact septohippocampal complex *in vitro*. *J. Neurosci.* 18, 6349–6357.
- Leinekugel, X., Khazipov, R., Cannon, R., Hirase, H., Ben-Ari, Y., and Buzsáki, G. (2002). Correlated bursts of activity in the neonatal hippocampus *in vivo*. *Science* 296, 2049–2052.
- Leinekugel, X., Medina, I., Khalilov, I., Ben-Ari, Y., and Khazipov, R. (1997). Ca<sup>2+</sup> oscillations mediated by the synergistic excitatory actions of GABA(A) and NMDA receptors in the neonatal hippocampus. *Neuron* 18, 243–255.
- Leitch, E., Coaker, J., Young, C., Mehta, V., and Sernagor, E. (2005). GABA type-A activity controls its own developmental polarity switch in the maturing retina. *J. Neurosci.* 25, 4801–4805.
- Li, H., Khirug, S., Cai, C., Ludwig, A., Blaesse, P., Kolikova, J., Afzalov, R., Coleman, S. K., Lauri, S., Airaksinen, M. S., Keinanen, K., Khiroug, L., Saarma, M., Kaila, K., and Rivera, C. (2007). KCC2 interacts with the dendritic cytoskeleton to promote spine development. *Neuron* 56, 1019–1033.
- Liu, Z., Neff, R. A., and Berg, D. K. (2006). Sequential interplay of nicotinic and GABAergic signaling guides neuronal development. *Science* 314, 1610–1613.
- Lozada, A. F., Wang, X., Gounko, N. V., Massey, K. A., Duan, J., Liu, Z., and Berg, D. K. (2012). Glutamatergic synapse formation is promoted by alpha7-containing nicotinic acetylcholine receptors. *J. Neurosci.* 32, 7651–7661.
- Manent, J. B., and Represa, A. (2007). Neurotransmitters and brain maturation: early paracrine actions of GABA and glutamate modulate neuronal migration. *Neuroscientist* 13, 268–279.
- Mazzuca, M., Minlebaev, M., Shakirzyanova, A., Tyzio, R., Taccola, G., Janackova, S., Gataullina, S., Ben-Ari, Y., Giniatullin, R., and Khazipov, R. (2011). Newborn analgesia mediated by oxytocin during delivery. *Front. Cell Neurosci.* 5:3. doi: 10.3389/fncel.2011.00003
- McLean, H. A., Caillard, O., Ben-Ari, Y., and Gaiarsa, J. L. (1996). Bidirectional plasticity expressed by GABAergic synapses in the neonatal rat hippocampus. *J. Physiol.* 496(Pt 2), 471–477.
- McNally, J. M., McCarley, R. W., McKenna, J. T., Yanagawa, Y., and Brown, R. E. (2011). Complex receptor mediation of acute ketamine application on *in vitro* gamma oscillations in mouse prefrontal cortex: modeling gamma band oscillation abnormalities in schizophrenia. *Neuroscience* 199, 51–63.
- Mercado, A., Broumand, V., Zandi-Nejad, K., Enck, A. H., and Mount, D. B. (2006). A C-terminal domain in KCC2 confers constitutive K<sup>+</sup>-Cl<sup>-</sup> cotransport. *J. Biol. Chem.* 281, 1016–1026.
- Mienville, J. M. (1998). Persistent depolarizing action of GABA in rat Cajal-Retzius cells. *J. Physiol.* 512(Pt 3), 809–817.
- Minlebaev, M., and Khazipov, R. (2011). Antiepileptic effects of endogenous beta-hydroxybutyrate in suckling infant rats. *Epilepsy Res.* 95, 100–109.
- Mohajerani, M. H., and Cherubini, E. (2005). Spontaneous recurrent network activity in organotypic rat hippocampal slices. *Eur. J. Neurosci.* 22, 107–118.
- Moyer, J. R., and Brown, T. H. (2002). “Patch clamp techniques applied to brain slices,” in *Patch-Clamp Analysis: Advanced Techniques*, eds W. Walz, A. A. Boulton, and G. B. Baker (Boston, USA: Harvard Press), 135–193.
- Mueller, A. L., Taube, J. S., and Schwartzkroin, P. A. (1984). Development of hyperpolarizing inhibitory postsynaptic potentials and hyperpolarizing response to gamma-aminobutyric acid in rabbit hippocampus studied *in vitro*. *J. Neurosci.* 4, 860–867.
- Mukhtarov, M., Ivanov, A., Zilberter, Y., and Bregestovski, P. (2011). Inhibition of spontaneous network activity in neonatal hippocampal slices by energy substrates is not correlated with intracellular acidification. *J. Neurochem.* 116, 316–321.
- Nabekura, J., Ueno, T., Okabe, A., Furuta, A., Iwaki, T., Shimizu-Okabe, C., Fukuda, A., and Akaike, N. (2002). Reduction of KCC2 expression and GABA<sub>A</sub> receptor-mediated excitation after *in vivo* axonal injury. *J. Neurosci.* 22, 4412–4417.
- Nardou, R., Yamamoto, S., Chazal, G., Bhar, A., Ferrand, N., Dulac, O., Ben-Ari, Y., and Khalilov, I. (2011). Neuronal chloride accumulation and excitatory GABA underlie aggravation of neonatal epileptiform activities by phenobarbital. *Brain* 134, 987–1002.
- O'Donovan, M. J. (1999). The origin of spontaneous activity in developing networks of the vertebrate nervous system. *Curr. Opin. Neurobiol.* 9, 94–104.
- Obata, K., Oide, M., and Tanaka, H. (1978). Excitatory and inhibitory actions of GABA and glycine on embryonic chick spinal neurons in culture. *Brain Res.* 144, 179–184.
- Obrietan, K., van den Pol, A. N. (1995). GABA neurotransmission in the hypothalamus: developmental reversal from Ca<sup>2+</sup> elevating to depressing. *J. Neurosci.* 15, 5065–5077.
- Obrietan, K., van den Pol, A. N. (1996). Growth cone calcium elevation by GABA. *J. Comp. Neurol.* 372, 167–175.
- Owens, D. F., Boyce, L. H., Davis, M. B., and Kriegstein, A. R. (1996). Excitatory GABA responses in embryonic and neonatal cortical slices demonstrated by gramicidin perforated-patch recordings and calcium imaging. *J. Neurosci.* 16, 6414–6423.
- Owens, D. F., and Kriegstein, A. R. (2002). Is there more to GABA than synaptic inhibition? *Nat. Rev. Neurosci.* 3, 715–727.
- Payne, J. A., Rivera, C., Voipio, J., and Kaila, K. (2003). Cation-chloride cotransporters in neuronal communication, development and trauma. *Trends Neurosci.* 26, 199–206.
- Picardo, M. A., Guigue, P., Bonifazi, P., Batista-Brito, R., Allene, C., Ribas, A., Fishell, G., Baude, A., and Cossart, R. (2011). Pioneer GABA cells comprise a subpopulation of hub neurons in the developing hippocampus. *Neuron* 71, 695–709.
- Platel, J. C., Dave, K. A., and Bordey, A. (2008). Control of neuroblast production and migration by converging GABA and glutamate signals in the postnatal forebrain. *J. Physiol.* 586, 3739–3743.
- Ren, J., and Greer, J. J. (2003). Ontogeny of rhythmic motor patterns generated in the embryonic rat spinal cord. *J. Neurophysiol.* 89, 1187–1195.
- Quilichini, P. P., Le Van Quyen, M., Ivanov, A., Turner, D. A., Carabalona, A., Gozlan, H., Esclapez, M., and Bernard, C. (2012). Hub GABA neurons mediate gamma-frequency oscillations at ictal-like event onset in the immature hippocampus. *Neuron* 74, 57–64.
- Reynolds, A., Brustein, E., Liao, M., Mercado, A., Babilonia, E., Mount, D. B., and Drapeau, P. (2008). Neurogenic role of the depolarizing chloride gradient revealed by global overexpression of KCC2 from the onset of development. *J. Neurosci.* 28, 1588–1597.
- Rheims, S., Minlebaev, M., Ivanov, A., Represa, A., Khazipov, R., Holmes, G. L., Ben-Ari, Y., and Zilberter, Y. (2008). Excitatory GABA in rodent developing neocortex *in vitro*. *J. Neurophysiol.* 100, 609–619.
- Rivera, C., Voipio, J., Payne, J. A., Ruusuvaari, E., Lahtinen, H., Lamsa, K., Pirvola, U., Saarma, M., and Kaila, K. (1999). The K<sup>+</sup>/Cl<sup>-</sup> co-transporter KCC2 renders GABA hyperpolarizing during neuronal maturation. *Nature* 397, 251–255.
- Ruusuvaari, E., Kirilkin, I., Pandya, N., and Kaila, K. (2010). Spontaneous network events driven by depolarizing GABA action in neonatal hippocampal slices are not attributable to deficient mitochondrial energy metabolism. *J. Neurosci.* 30, 15638–15642.
- Sauer, J. F., Struber, M., and Bartos, M. (2012). Interneurons provide circuit-specific depolarization and hyperpolarization. *J. Neurosci.* 32, 4224–4229.
- Sedlacek, J. (1985). Bicuculline activation of embryonic spontaneous motility. *Physiol. Bohemoslov.* 34, 33–39.
- Sernagor, E., Young, C., and Eglen, S. J. (2003). Developmental modulation of retinal wave dynamics: shedding light on the GABA saga. *J. Neurosci.* 23, 7621–7629.
- Sipila, S. T., Schuchmann, S., Voipio, J., Yamada, J., and Kaila, K. (2006). The cation-chloride cotransporter NKCC1 promotes sharp waves in the neonatal rat hippocampus. *J. Physiol.* 573, 765–773.
- Staiger, J. F., Flaggmeyer, I., Schubert, D., Zilles, K., Kötter, R., and Luhmann, H. J. (2004). Functional diversity of layer IV spiny neurons in rat somatosensory cortex: quantitative morphology of electrophysiologically characterized and biocytin labeled cells. *Cereb. Cortex* 14, 690–701.
- Staley, K. J., and Mody, I. (1992). Shunting of excitatory input to dentate gyrus granule cells by a depolarizing GABA<sub>A</sub> receptor-mediated postsynaptic conductance. *J. Neurophysiol.* 68, 197–212.
- Stil, A., Jean-Xavier, C., Liabeuf, S., Brocard, C., Delpire, E., Vinay, L., and Viemari, J. C. (2011). Contribution of the potassium-chloride co-transporter KCC2 to the modulation of lumbar spinal networks in mice. *Eur. J. Neurosci.* 33, 1212–1222.
- Stil, A., Liabeuf, S., Jean-Xavier, C., Brocard, C., Viemari, J. C., and Vinay, L. (2009). Developmental up-regulation of the potassium-chloride cotransporter type 2 in the rat lumbar spinal cord. *Neuroscience* 164, 809–821.

- Succol, F., Fiumelli, H., Benfenati, F., Cancedda, L., and Barberis, A. (2012). Intracellular chloride concentration influences the GABA<sub>A</sub> receptor subunit composition. *Nat. Commun.* 3, 738.
- Sun, Y. G., Wu, C. S., Renger, J. J., Uebele, V. N., Lu, H. C., and Beierlein, M. (2012). GABAergic synaptic transmission triggers action potentials in thalamic reticular nucleus neurons. *J. Neurosci.* 32, 7782–7790.
- Sung, K. W., Kirby, M., McDonald, M. P., Lovinger, D. M., and Delpire, E. (2000). Abnormal GABA<sub>A</sub> receptor-mediated currents in dorsal root ganglion neurons isolated from Na-K-2Cl cotransporter null mice. *J. Neurosci.* 20, 7531–7538.
- Takano, H., McCartney, M., Ortinski, P. I., Yue, C., Putt, M. E., and Coulter, D. A. (2012). Deterministic and stochastic neuronal contributions to distinct synchronous CA3 network bursts. *J. Neurosci.* 32, 4743–4754.
- Taylor, M., Young, S. Z., Wu, S., Bordey, A. (2011). Dampening GABA-A excitation in subventricular zone neural progenitor cell decreases neonatal neurogenesis. *Soc. Neurosci.* 31–16. Ref Type: Abstract.
- Tornberg, J., Voikar, V., Savilahti, H., Rauvala, H., and Airaksinen, M. S. (2005). Behavioural phenotypes of hypomorphic KCC2-deficient mice. *Eur. J. Neurosci.* 21, 1327–1337.
- Toyoda, H., Ohno, K., Yamada, J., Ikeda, M., Okabe, A., Sato, K., Hashimoto, K., and Fukuda, A. (2003). Induction of NMDA and GABA<sub>A</sub> receptor-mediated Ca<sup>2+</sup> oscillations with KCC2 mRNA downregulation in injured facial motoneurons. *J. Neurophysiol.* 89, 1353–1362.
- Tyzio, R., Allene, C., Nardou, R., Picardo, M. A., Yamamoto, S., Sivakumaran, S., Caiati, M. D., Rheims, S., Minlebaev, M., Milh, M., Ferre, P., Khazipov, R., Romette, J. L., Lorquin, J., Cossart, R., Khalilov, I., Nehlig, A., Cherubini, E., and Ben-Ari, Y. (2011). Depolarizing actions of GABA in immature neurons depend neither on ketone bodies nor on pyruvate. *J. Neurosci.* 31, 34–45.
- Tyzio, R., Cossart, R., Khalilov, I., Minlebaev, M., Hubner, C. A., Represa, A., Ben-Ari, Y., and Khazipov, R. (2006). Maternal oxytocin triggers a transient inhibitory switch in GABA signaling in the fetal brain during delivery. *Science* 314, 1788–1792.
- Tyzio, R., Minlebaev, M., Rheims, S., Ivanov, A., Jorquera, I., Holmes, G. L., Zilberter, Y., Ben-Ari, Y., and Khazipov, R. (2008). Postnatal changes in somatic gamma-aminobutyric acid signalling in the rat hippocampus. *Eur. J. Neurosci.* 27, 2515–2528.
- Tyzio, R., Represa, A., Jorquera, I., Ben-Ari, Y., Gozlan, H., and Aniksztejn, L. (1999). The establishment of GABAergic and glutamatergic synapses on CA1 pyramidal neurons is sequential and correlates with the development of the apical dendrite. *J. Neurosci.* 19, 10372–10382.
- Uvarov, P., Ludwig, A., Markkanen, M., Soni, S., Hubner, C. A., Rivera, C., and Airaksinen, M. S. (2009). Coexpression and heteromerization of two neuronal K-Cl cotransporter isoforms in neonatal brain. *J. Biol. Chem.* 284, 13696–13704.
- Valeeva, G., Abdullin, A., Tyzio, R., Skorinkin, A., Nikolski, E., Ben-Ari, Y., and Khazipov, R. (2010). Temporal coding at the immature depolarizing GABAergic synapse. *Front. Cell Neurosci.* 4:17. doi: 10.3389/fncel.2010.00017
- Valeeva, G., Valiullina, F., and Khazipov, R. (2012). “Excitatory actions of GABA in the intact neonatal rodent hippocampus *in vitro*,” in *FENS Meeting*, (Barcelona, Spain), abstract 1116.
- van den Pol, A. N. (1997). GABA immunoreactivity in hypothalamic neurons and growth cones in early development *in vitro* before synapse formation. *J. Comp. Neurol.* 383, 178–188.
- van den Pol, A. N., Gao, X. B., Patrylo, P. R., Ghosh, P. K., and Obrietan, K. (1998). Glutamate inhibits GABA excitatory activity in developing neurons. *J. Neurosci.* 18, 10749–10761.
- van den Pol, A. N., Obrietan, K., and Chen, G. (1996). Excitatory actions of GABA after neuronal trauma. *J. Neurosci.* 16, 4283–4292.
- Voigt, T., Opitz, T., and de Lima, A. D. (2001). Synchronous oscillatory activity in immature cortical network is driven by GABAergic preplate neurons. *J. Neurosci.* 21, 8895–8905.
- Waddell, J., Kim, J., Alger, B. E., and McCarthy, M. M. (2011). The depolarizing action of GABA in cultured hippocampal neurons is not due to the absence of ketone bodies. *PLoS ONE* 6:e23020. doi: 10.1371/journal.pone.0023020
- Wagner, S., Castel, M., Gainer, H., and Yarom, Y. (1997). GABA in the mammalian suprachiasmatic nucleus and its role in diurnal rhythmicity. *Nature* 387, 598–603.
- Wang, C., Ohno, K., Furukawa, T., Ueki, T., Ikeda, M., Fukuda, A., and Sato, K. (2005). Differential expression of KCC2 accounts for the differential GABA responses between relay and intrinsic neurons in the early postnatal rat olfactory bulb. *Eur. J. Neurosci.* 21, 1449–1455.
- Wang, D. D., and Kriegstein, A. R. (2008). GABA regulates excitatory synapse formation in the neocortex via NMDA receptor activation. *J. Neurosci.* 28, 5547–5558.
- Watanabe, M., Wake, H., Moorhouse, A. J., and Nabekura, J. (2009). Clustering of neuronal K<sup>+</sup>-Cl<sup>-</sup> cotransporters in lipid rafts by tyrosine phosphorylation. *J. Biol. Chem.* 284, 27980–27988.
- Wilhelm, J. C., and Wenner, P. (2008). GABA transmission is a critical step in the process of triggering homeostatic increases in quantal amplitude. *Proc. Natl. Acad. Sci. U.S.A.* 105, 11412–11417.
- Woo, N. S., Lu, J., England, R., McClellan, R., Dufour, S., Mount, D. B., Deutch, A. Y., Lovinger, D. M., and Delpire, E. (2002). Hyperexcitability and epilepsy associated with disruption of the mouse neuronal-specific K-Cl cotransporter gene. *Hippocampus* 12, 258–268.
- Yamada, J., Okabe, A., Toyoda, H., Kilb, W., Luhmann, H. J., and Fukuda, A. (2004). Cl<sup>-</sup> uptake promoting depolarizing GABA actions in immature rat neocortical neurones is mediated by NKCC1. *J. Physiol.* 557, 829–841.
- Yang, H., Shew, W. L., Roy, R., and Plenz, D. (2012). Maximal variability of phase synchrony in cortical networks with neuronal avalanches. *J. Neurosci.* 32, 1061–1072.
- Yang, J. W., Hanganu-Opatz, I. L., Sun, J. J., and Luhmann, H. J. (2009). Three patterns of oscillatory activity differentially synchronize developing neocortical networks *in vivo*. *J. Neurosci.* 29, 9011–9025.
- Yeo, M., Berglund, K., Augustine, G., and Liedtke, W. (2009). Novel repression of Kcc2 transcription by REST-RE-1 controls developmental switch in neuronal chloride. *J. Neurosci.* 29, 14652–14662.
- Young, S. Z., Platel, J. C., Nielsen, J. V., Jensen, N. A., and Bordey, A. (2010). GABA(A) Increases calcium in subventricular zone astrocyte-like cells through L- and T-type voltage-gated calcium channels. *Front. Cell Neurosci.* 4:8. doi: 10.3389/fncel.2010.00008
- Yvert, B., Branchereau, P., and Meyrand, P. (2004). Multiple spontaneous rhythmic activity patterns generated by the embryonic mouse spinal cord occur within a specific developmental time window. *J. Neurophysiol.* 91, 2101–2109.
- Yvert, B., Mazzocco, C., Joucla, S., Langla, A., and Meyrand, P. (2011). Artificial CSF motion ensures rhythmic activity in the developing CNS *ex vivo*: a mechanical source of rhythmogenesis? *J. Neurosci.* 31, 8832–8840.
- Zhang, L. L., Pathak, H. R., Coulter, D. A., Freed, M. A., and Vardi, N. (2006). Shift of intracellular chloride concentration in ganglion and amacrine cells of developing mouse retina. *J. Neurophysiol.* 95, 2404–2416.
- Zhang, R. W., Wei, H. P., Xia, Y. M., and Du, J. L. (2010). Development of light response and GABAergic excitation-to-inhibition switch in zebrafish retinal ganglion cells. *J. Physiol.* 588, 2557–2569.
- Zilberter, Y., Zilberter, T., and Bregestovski, P. (2010). Neuronal activity *in vitro* and the *in vivo* reality: the role of energy homeostasis. *Trends Pharmacol. Sci.* 31, 394–401.

**Conflict of Interest Statement:** The authors declare that the research was conducted in the absence of any commercial or financial relationships that could be construed as a potential conflict of interest.

Received: 03 July 2012; accepted: 29 July 2012; published online: 28 August 2012.  
 Citation: Ben-Ari Y, Woodin MA, Sernagor E, Cancedda L, Vinay L, Rivera C, Legendre P, Luhmann HJ, Bordey A, Wenner P, Fukuda A, van den Pol AN, Gaiarsa J-L and Cherubini E (2012) Refuting the challenges of the developmental shift of polarity of GABA actions: GABA more exciting than ever! *Front. Cell. Neurosci.* 6:35. doi: 10.3389/fncel.2012.00035

Copyright © 2012 Ben-Ari, Woodin, Sernagor, Cancedda, Vinay, Rivera, Legendre, Luhmann, Bordey, Wenner, Fukuda, van den Pol, Gaiarsa and Cherubini. This is an open-access article distributed under the terms of the Creative Commons Attribution License, which permits use, distribution and reproduction in other forums, provided the original authors and source are credited and subject to any copyright notices concerning any third-party graphics etc.