

## FIGURES

FIGURE 1. a) B1 pH over time; b) B1pH modelled vs KOH; c) B2 pH over time; d) B2 pH modelled vs KOH; e) B3pH studies over time; f) B3 pH modelled vs KOH.

FIGURE 2. a) Mineral and solid phases in B1; b) Mineral and solid phases in B2; c) Mineral and solid phases in B3.

FIGURE 3. Kinetic oxidation of Fe aqueous complexes over 8 days of simulation

FIGURE 4. Kinetic variation of the B2 pH over 8 days of simulation

FIGURE 5.  $\text{Mg}(\text{OH})_2$  SI variation vs KOH

FIGURE 1

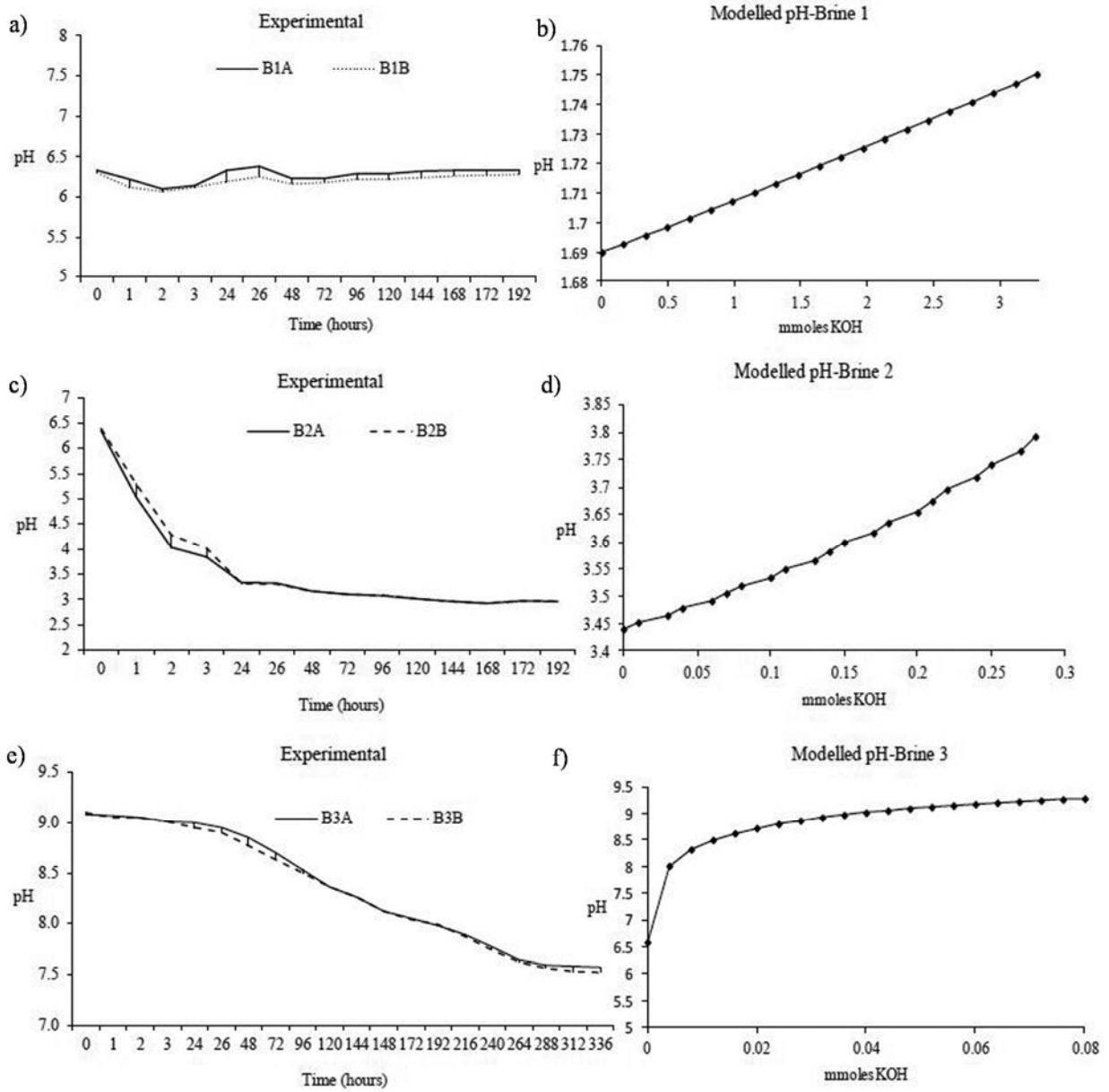


FIGURE 2

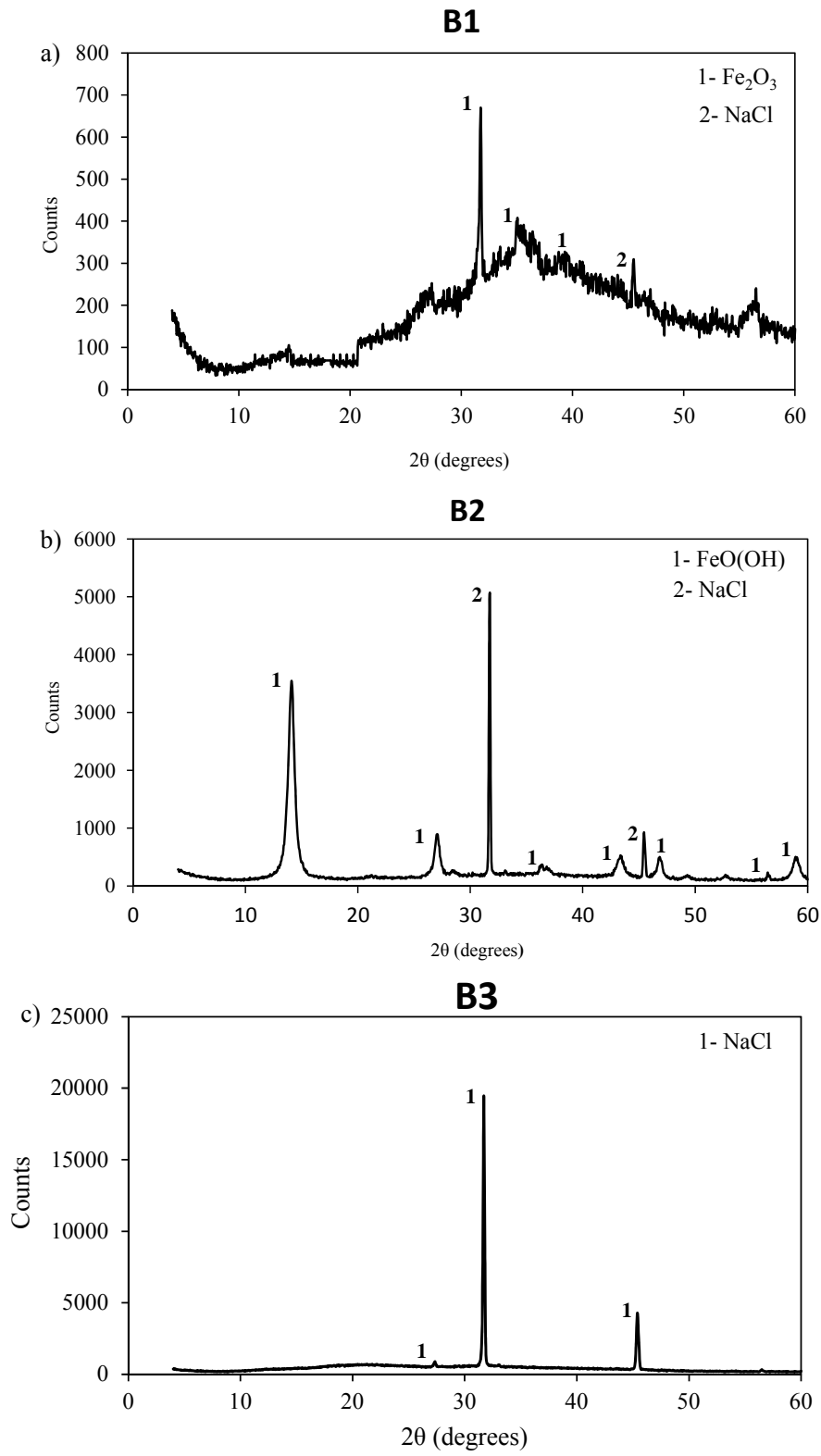


FIGURE 3

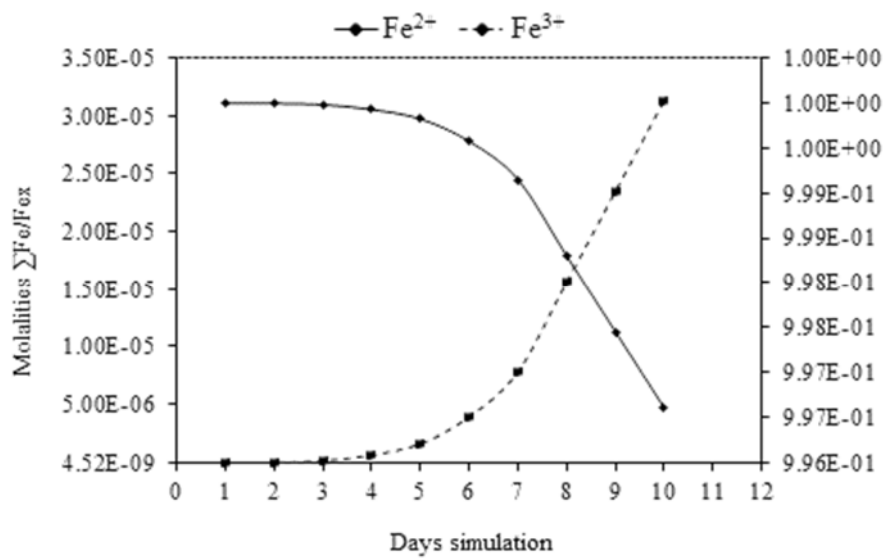


FIGURE 4

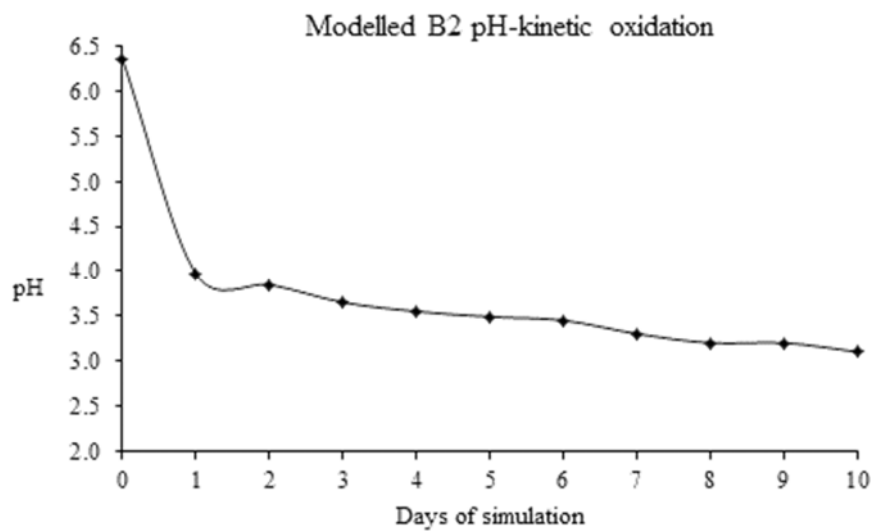


FIGURE 5

