

1 **Testing the relative sensitivity of 102 ecological variables as indicators of woodland condition in**
2 **the New Forest, UK**

3
4 Paul M. Evans^{a*}, Adrian C. Newton^a, Elena Cantarello^a, Neil Sanderson^b, Davey L. Jones^c, Nadia
5 Barsoum^d, Joan E. Cottrell^d, Stuart W. A'Hara^d, & Lauren Fuller^e

6
7 ^aCentre for Ecology, Environment and Sustainability, Faculty of Science and Technology,
8 Bournemouth University, Poole, BH12 5BB, UK.

9 ^bBotanical Survey and Assessment, 3 Green Close, Woodlands, Southampton, Hampshire, SO40
10 7HU, UK.

11 ^cSchool of Environment, Natural Resources and Geography, Bangor University, Gwynedd, LL57
12 2UW, UK.

13 ^dForest Research, Alice Holt Lodge, Farnham, Surrey, GU10 4LH, UK.

14 ^eLife Smart Waste Project & Dataflows, SEPA, Strathallan House, Castle Business Park, Stirling,
15 FK9 4TZ.

16 Corresponding author: *paul_m_evans@outlook.com; Tel +44 (0) 1202 961831; Present address: Flat
17 1, 26b High Street, Hanham, BS15 3DW.

18
19 **Abstract**

20 Forests globally are facing an increasing number of threats from modified disturbance regimes, novel
21 stressors and changing environmental conditions. This has ultimately resulted in declines in the
22 ecological condition of many forest and woodland ecosystems, leading to widespread tree mortality
23 and stand dieback. Effective indicators of overall woodland ecological condition are therefore needed
24 for environmental monitoring and to support management responses. To test the effectiveness of
25 different variables that could potentially be used as indicators of woodland condition, 102 variables
26 that describe woodland structure, composition, functioning, edaphic conditions and disturbance
27 regimes were assessed along 12 replicate gradients of beech stand dieback. Results indicated that 35
28 variables differed significantly between at least two stages of the dieback gradient, indicating their
29 sensitivity to stand dieback. Seven of these indicators related to woodland species composition, two to
30 functional processes, 20 to structural features, four to edaphic conditions, and two to disturbance
31 regimes. These results demonstrate that effective indicators can potentially be identified for each of
32 the ecological categories. Effective composition indicators included species richness of
33 ectomycorrhizal fungi, ground flora and epiphytic lichens; functional indicators were soil respiration
34 rate and net nitrification rate; edaphic conditions included soil Na:Ca ratio, sodium cation exchange
35 capacity, total carbon, Ca:Al ratio, structural indicators included canopy openness, litter cover, sward
36 height, and volume of deadwood, and for disturbance was *Equus* dung density. Other measures, such
37 as shrub cover and species richness of carabid beetles and spiders, were not found to vary

38 significantly along the dieback gradients, and were therefore not identified as effective indicators.
39 These results demonstrate the value of gradient analysis for evaluating indicators of woodland
40 condition, but also highlight the need for multi-site studies to identify indicators with wide
41 applicability.

42

43 **Keywords**

44 Indicators; temperate forest; effectiveness; forest ecological condition

45

46 **1. Introduction**

47 Forests globally are facing multiple threats related to changing climatic conditions, and to the
48 intensification, interaction and proliferation of disturbance regimes and actors (Allen et al., 2015;
49 Flower and Gonzalez-Meler, 2015; Trumbore et al., 2015; Jung et al., 2018; Ramirez et al., 2018).
50 There is an increasing incidence of large-scale dieback of trees occurring in both tropical and
51 temperate forests as a result of interacting factors such as drought (Allen, 2009; Breshears et al., 2009;
52 Allen et al., 2015; Clark et al., 2016), storms (Csilléry et al., 2017), and the spread of invasive species
53 and novel pests and diseases (van Mantgem and Stephenson, 2007; Sallé et al., 2014; Flower and
54 Gonzalez-Meler, 2015). Such trends have been associated with declines in ecological condition
55 (Gibbons and Freudenberger, 2006), which is defined as an overall product of forest structure,
56 composition and functional processes. Loss of ecological condition is therefore associated with a
57 simplification of forest structure (Noss, 1999), major losses in biodiversity, including native
58 biodiversity (Gao et al., 2015) and/or rapid, detrimental changes in forest dynamic processes such as
59 reduced nutrient cycling rates (Trumbore, 2015). These, in turn, lead to declines in the provision of
60 ecosystem services to human society (MEA, 2005; Foley et al., 2007; Isbell et al., 2015; Trumbore et
61 al., 2015). As a result of interacting pressures, many forest ecosystems are currently considered to be
62 at risk of ecological collapse, which could lead to rapid and long-lasting changes in the state and
63 dynamics of forest ecosystems (Lindenmayer et al., 2016). However, our understanding of the
64 ecological processes occurring during the degradation and collapse of forest ecosystems is still
65 limited, which limits our ability to detect change, recognise tipping points and develop appropriate
66 management and policy responses as counter measures (Breshears et al., 2005; Woodall et al., 2009;
67 Allen et al., 2010; Newton and Echeverría 2014; Lindenmayer et al., 2016).

68

69 To be able to maintain or improve forest condition by adopting appropriate management and
70 conservation measures, it is important to determine the ecological condition of forests and how this
71 might be altered as a result of environmental change or human interventions. However, measuring all
72 dimensions of forest or woodland ecological condition is rarely possible owing to the cost and
73 difficulty of collecting data for a large number of different metrics. For this reason, surrogate

74 measures are often used (Hyman and Leibowitz, 2001; Chirici et al., 2012). Rather than measuring
75 ecosystems directly, surrogates can be used as proxies for different ecosystem components such as
76 ecological processes and functions, environmental conditions, and the abundance or diversity of
77 particular groups of species (Lindenmayer et al., 2014). Numerous different measures have been
78 proposed in this context, including single keystone or umbrella species (e.g. Ozaki et al., 2006), taxa-
79 based surrogates (Sabatini et al., 2015; Larrieu et al., 2018) and habitat-based surrogates including
80 vegetation structure, environmental conditions and landscape patterns (Ludwig et al., 2004; Rodrigues
81 and Brooks, 2007). Surrogate measures can relate to a single indicator or a set of multiple indicators
82 derived from different broad categories, each of which can potentially be used to indicate different
83 aspects of ecosystem condition (Noss, 1990; Gao et al., 2015).

84

85 A large number of indicators of forest and woodland condition have been developed in association
86 with various national and international initiatives striving to develop criteria and indicators that reflect
87 progress towards sustainable forest management (SFM) goals and implementing the Convention on
88 Biological Diversity, as well as other intergovernmental policy initiatives (Higman et al., 2005; Gao et
89 al., 2015). For example, a set of Pan-European Indicators for SFM was developed based on set of 34
90 quantitative and 11 qualitative indicators (Forest Europe, 2015). Some of these indicators are relevant
91 for assessing forest condition, such as soil condition, species diversity, dead wood and regeneration,
92 and many of which have been integrated into National Forest Inventories (Chirici et al., 2012). A
93 recent evaluation of the implementation of these indicators showed that they have made a positive
94 contribution to standardising international reporting in the region, and in communicating what SFM
95 comprises. However, their impact has been limited to date by a number of constraints, including a
96 lack of evidence regarding their links with forest management activities, and a failure to define
97 appropriate thresholds or trade-offs among individual indicators (Baycheva-Merger and Wolfslehner,
98 2016). Other sets of indicators of forest condition variables are also widely used with varying degrees
99 of success to support monitoring of forest biodiversity conservation initiatives, in managed and
100 unmanaged woodlands (Gao et al., 2015; Dieler et al., 2017). For example in Europe, the NATURA
101 2000 network of protected areas requires ecological monitoring to ensure that a favourable
102 conservation status of the sites is maintained and this is pursued using specific forest condition
103 indicators (Cantarello and Newton, 2008).

104

105 Although large numbers of indicators of forest and woodland ecological condition have been
106 developed, many have proved to be impractical for implementation at the scale at which individual
107 woodlands are managed (Franc et al., 2001; Angelstam and Dönz-Breuss, 2004). This is especially the
108 case for those indicators developed to monitor forest biodiversity as an important component
109 underpinning habitat condition (Newton et al., 2007; Chirici et al., 2012). In addition, the scientific
110 validity of many woodland condition indicators is open to question, as they have not been adequately

111 tested or rigorously validated (Noss, 1999; Lindenmayer et al., 2006, 2014; Gao et al., 2015).
112 According to Noss (1990), indicators of biodiversity should ideally be sufficiently sensitive to provide
113 an early warning of change; capable of providing a continuous assessment over a wide range of
114 disturbances; and relevant to ecologically significant phenomena (such as key ecological processes).
115 Information is also needed specifically on how indicators respond to disturbance (Lindenmayer et al.,
116 2000). Further, Simberloff (1997) noted the importance of being able to relate variation in a
117 biodiversity indicator to chemical/physical changes in the environment. However, few indicators of
118 woodland ecological condition have been assessed against these criteria, particularly at local scales.
119 As a result, evidence is lacking on the relative effectiveness and workability of the different indicators
120 that have been proposed (Mahanty et al., 2007; Alexander, 2013; Neupane et al., 2016), leading to a
121 lack of robust guidance regarding how an appropriate group of indicators might best be selected
122 (Niemi and McDonald, 2004; Lawley et al., 2016).

123

124 How might the suitability or effectiveness of a set of woodland ecological condition indicators
125 therefore be tested? One potential approach is to compare woodland stands along gradients of
126 disturbance (Angelstam and Dönz-Breuss, 2004). This would allow the criteria identified by Noss
127 (1990) to be rigorously applied, for example by enabling the sensitivity of indicators to disturbance to
128 be examined. Despite its potential promise, this approach has been relatively little used by
129 researchers. Examples include studies by Liow et al. (2001) who examined bee diversity along a
130 disturbance gradient in tropical lowland forests in South-east Asia; Jones et al. (2003) in South-East
131 Asia who described the collapse of termite assemblages along a land-use intensification gradient in
132 lowland central Sumatra, Indonesia; and Newton et al. (2007), who examined floristic diversity along
133 anthropogenic disturbance gradients in fragmented forests of Latin America. However, we are not
134 aware of any previous study that has evaluated the effectiveness of indicators along gradients of stand
135 dieback. Such gradients enable some of the criteria identified by Noss (1990) to be directly addressed,
136 by providing an opportunity to examine the performance of indicators in relation to a form of
137 disturbance that is ecologically and societally very significant. Dieback gradients also provide a wide
138 range of disturbance intensities over which to evaluate indicator performance. For example, any
139 indicator that is insensitive to complete dieback of a forest stand clearly has little value for monitoring
140 woodland ecological condition.

141

142 The aim of this research was therefore to test whether commonly- and easily-measured ecological
143 variables of woodland ecosystem condition are a sensitive reflection of dieback at a stand scale, and
144 could therefore potentially be used as indicators of shifts in ecological condition. To achieve this, we
145 examined a range of potential indicators along a gradient of beech woodland dieback. 102 ecological
146 variables were selected describing forest ecosystem composition, structure and functioning as well as
147 edaphic conditions and primarily herbivore-related levels of disturbance (Noss, 1990; Gao et al.,

148 2015; Lawley et al., 2016). Examples of structural variables included canopy structure and cover;
149 functional variables included measures of ecological processes, such as the rate of soil nutrient
150 cycling; compositional variables related to the species richness and abundance of different taxonomic
151 groups (Noss, 1990); edaphic conditions included soil structural and chemical properties; and levels
152 of disturbance were assessed, for example, by browsing intensity and dung density. Therefore, our
153 study was undertaken to test the hypothesis that compositional, functional, edaphic, structural, and
154 disturbance variables could be used effectively at the stand scale as indicators for differentiating
155 between the stages of woodland stand dieback. Our objective was also to identify which ecological
156 variable(s) are most effective at highlighting declines in beech woodland condition.

157

158 **2. Methods**

159 2.1. Study area

160 We conducted this study in the New Forest National Park (NFNP), which covers an area of 57,100 ha
161 in southern England (longitude: 1°17'59'' to 1°48'8'' W, Latitude: 50°42'19'' to 51°0'17'' N),
162 and has annual means of 14.8°C (maximum temperature) and 835.2 mm (rainfall) (Met
163 Office, 2015). The NFNP lies upon sedimentary clay and sandy soils, which form a mixture
164 of base-poor acidic, and well-drained clay and loam soils. Continuously-waterlogged marshy
165 bogs and mires are also present (Tubbs, 2001). All survey plots were located within the ancient
166 native woodlands of the NFNP (Fig. 1). The canopies of these ancient woodlands are generally
167 dominated by beech (*Fagus sylvatica*) and pedunculate oak (*Quercus robur*) interspersed with birch
168 (*Betula pendula*), with yew (*Taxus baccata*) and holly (*Ilex aquifolium*) frequently present in the
169 understorey (Tubbs, 2001). Collectively, these woodlands represent one of the most extensive areas of
170 native, semi-natural woodland in England, and are characterised by a diverse structure with many
171 ancient trees and large volumes of deadwood, providing habitat for a high diversity of invertebrates,
172 ectomycorrhizal fungi (ECM) and lichens (Tubbs, 2001; Newton, 2010). The area is also
173 characterised by high densities of large herbivores, including both livestock and deer, owing to its
174 designation as a Royal Hunting Forest and as common land over which livestock are free to roam
175 (Tubbs, 2001; Newton et al., 2013). We selected study areas that were all beech-dominated. These
176 areas of beech woodland are currently undergoing moderate to significant stand dieback. The dieback
177 appears to be related to a combination of changing climate conditions (specifically an increased
178 incidence of summer droughts and winter waterlogging) and the action of fungal pathogens (Martin et
179 al., 2015, 2017; Evans et al., 2017). The variation in levels of beech dieback throughout the NFNP
180 provides a gradient of woodland dieback along which the relative sensitivity of 102 woodland
181 ecological variables as indicators of beech woodland condition could be tested.

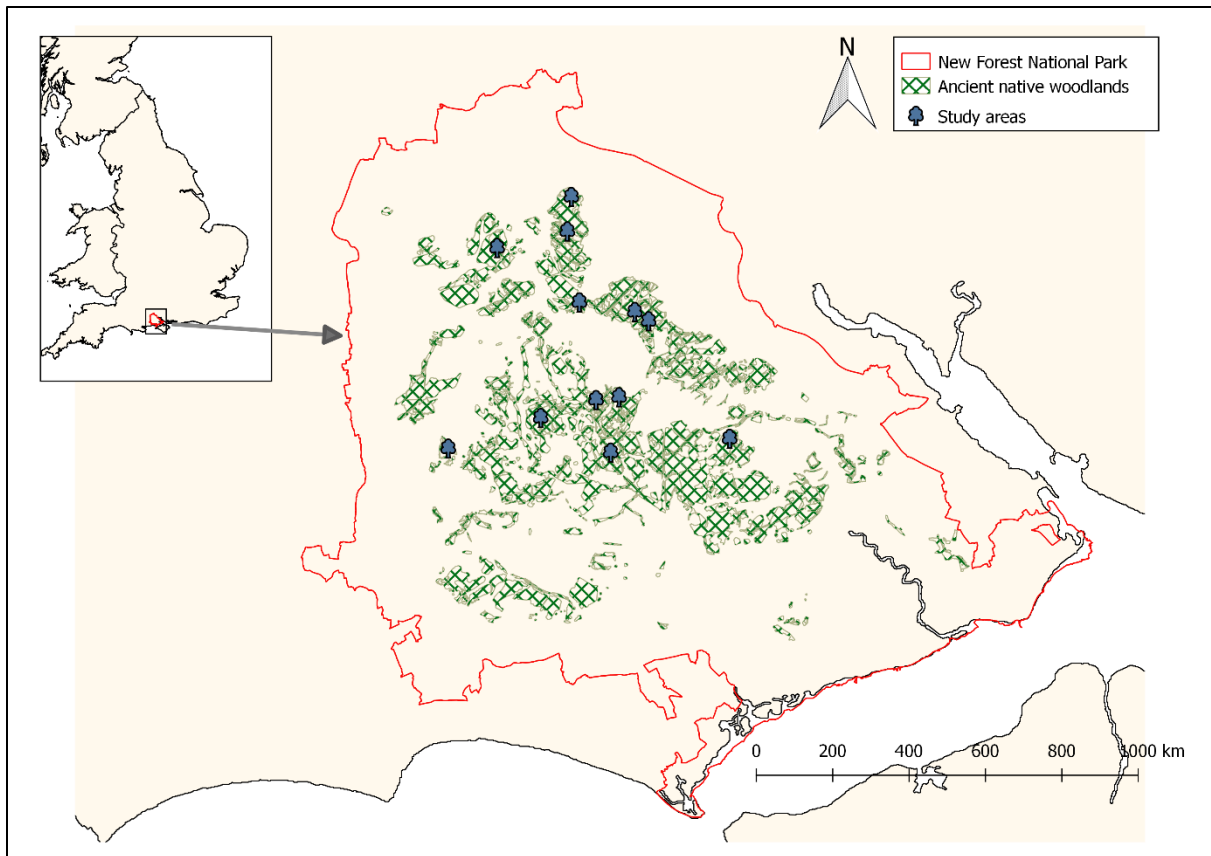
182
183
184
185
186
187
188
189
190
191
192
193
194
195
196
197
198
199
200
201
202
203
204
205
206
207
208
209
210
211
212
213
214
215
216
217
218

2.2. Experimental design

We established survey plots along a gradient of beech woodland condition in twelve replicate woodland blocks. The gradient of beech woodland condition covered five stages of stand dieback ranging from Intact (i.e. a closed canopy beech stand) to Total dieback (where no living beech remained). All survey plots were assumed to have had a similar starting (i.e. closed canopy) density as they were all in ancient native woodlands. The stages of dieback were determined primarily by the basal area (BA) of living trees. However, essential secondary criteria for site selection included the presence of standing or lying dead wood, beech snag presence in the Total dieback stage, increased canopy openness associated with tree mortality, and degradation of the remaining beech crowns, following (Roloff, 1989). Any prospective survey plots, other than the Intact plot, which did not meet the secondary criteria as well as the primary criterion were not used. Survey plots were positioned to provide linear gradients of BA of the canopy dominant species (beech), as calculated by Cantarello and Newton (2008). The mean BA of 12 Intact beech stands was first calculated, then used to define the BA of four other stages along each gradient, namely Slight dieback (defined as 75% of the mean BA of Intact stands); Moderate dieback (50%), Major dieback (25%), and Total dieback (0%). For ease of reference, 1-5 represent the individual dieback stages in numeric form, with 1 indicating Intact stands and 5 indicating Total dieback. This provided 12 replicates of each gradient stage, totalling 60 survey plots overall, each of which was 20 x 20 m (0.04 ha) in area.

2.3. Ecological variables measured

We recorded 102 ecological variables in each of the 60 survey plots (Table 1). The variables included condition measures that have been found to be useful at multiple woodland locations and woodland types. For example, due to their utility, metrics relating to dead wood (e.g. Angelstam and Dönz-Breuss, 2004; JNCC, 2004; Rondeux and Sanchez, 2010), tree canopy health (Zarnoch et al., 2004; Gao et al. 2015), soil productivity (Amacher et al., 2007; Thiffault et al., 2011; Forest Europe, 2015), and browsing disturbance and regeneration (Angelstam and Dönz-Breuss, 2004; Forest Europe, 2015) have frequently been used in woodland condition assessments. Overall, the variables used in this study included 35 of stand composition, 4 of functional processes, 29 of edaphic (physical and chemical) conditions of the forest floor to a mineral layer depth of 15 cm, 22 measures of woodland stand structure, and 12 of environmental disturbances (e.g. herbivory). For the methods used, see the Methodology section in the Supplementary Material. The selection of ecological variables was based on variables that had been previously applied as indicators to describe an element of forest condition (see Noss, 1999; Angelstam and Dönz-Breuss, 2004; Cantarello and Newton, 2008; Thiffault et al., 2011; Forest Europe, 2015; Gao et al., 2015).



219

220 Fig. 1: Map of the New Forest National Park (red outline) the ancient native woodlands (green), in
 221 Hampshire, UK, and the central location of each study area (blue trees). Map was produced using
 222 QGIS 2.18.19.

223

224 2.4. Statistical analysis

225 One-way ANOVAs were used to analyse each variable to identify significant differences between
 226 mean values associated with the different stages of dieback. To test whether the data matched the
 227 assumptions of ANOVA, Shapiro-Wilk tests were conducted to test the normality of each variable at
 228 each stage over the gradient, and Levene's test was used to test for homogeneity of variance (Fox and
 229 Weisberg, 2011; R 'car' package). Where the ANOVA assumptions were met, one-way factorial
 230 ANOVAs were performed with the indicator as the response variable and the dieback stages as the
 231 independent variable. When the homogeneity of variances assumption was not met, or the variables
 232 had unequal sample sizes, Welch's one-way ANOVA was used. For variables that did not exhibit
 233 normality, even after transformations, the non-parametric Kruskal-Wallis test was used. If ANOVA
 234 results calculated significant differences at a 0.05 level, Tukey's, Games-Howell (Games and Howell,
 235 1976) or Dunn's (Dunn, 1964) post-hoc pairwise comparison tests were carried out for ANOVA,
 236 Welch's ANOVA and Kruskal-Wallis tests, respectively. To reduce the chance of a false positive (a
 237 Type I error), Bonferroni-corrected p-values were calculated in addition to the standard p-values. All

238 statistical analyses were carried out using R (version 3.2.3; R Development Core Team, 2015,
239 <http://www.r-project.org/>).
240

Species composition	Functional process	Edaphic conditions	Stand structure	Disturbance intensity
• Ant species richness	• Net ammonification per month	• Ammonium concentration (mineral layer)	• Aboveground woody tree biomass	• Bare ground and moss cover
• Beech sapling density	• Net N mineralisation	• Ammonium concentration (organic layer)	• Average height of beech trees	• Cervus dung density (proportional)
• Beech seedling density	• Net nitrification	• Ca/Al ratio	• Beech biomass	• Cervus dung density (total)
• Beech tree density	• Soil respiration rate	• Clay percentage of soil	• Beech tree canopy discolouration	• Debarking of trees
• Bracken cover		• Electrical conductivity	• Beech tree leaf loss	• Dung density (proportional)
• Carabid beetle species richness		• Loss on ignition (mineral layer)	• Beech tree structural canopy loss	• Dung density (total)
• Click beetle species richness		• Loss on ignition (organic layer)	• Canopy openness	• Equus dung density (proportional)
• ECM species richness		• Moisture content (mineral layer)	• Live wood to dead wood ratio	• Equus dung density (total)
• Grass cover		• Moisture content (organic layer)	• Living biomass of holly	• Holly shrubs browsed
• Ground flora species richness		• Nitrate concentration (mineral layer)	• Lying dead wood volume (all species)	• Palatable tree browseline
• Ground-dwelling invertebrates species richness		• Nitrate concentration (organic layer)	• Lying dead wood volume of beech	• Rubus sp. eaten by herbivores
• Holly sapling density		• Organic soil depth	• Mean (quadratic) diameter at breast height of beech	• Unpalatable tree browseline
• Holly seedling density		• Potentially mineralisable N (mineral layer)	• Sward height	
• Holly shrub cover		• Potentially mineralisable N (organic layer)	• Total C in stand	
• Holly tree density		• Sand percentage of soil	• Understorey openness	
• Large beech trees (68.32 cm < DBH < 74.97 cm) density		• Silt percentage of soil	• Unhealthiness of beech trees	

- Lichen richness on holly
- Lichen richness on non-holly and non-beech trees
- Lichen species richness on beech
- Litter cover
- Oak seedling density
- Palatable seedling density
- Rove beetle species richness
- *Rubus* sp. ground cover
- Seedling and ground flora species richness
- Small beech trees (10 cm < DBH < 59.59 cm) density
- Spider species richness
- Total lichen species richness
- Total sapling density
- Total tree seedling density
- Tree seedling species richness
- Tree species richness
- Very large beech trees (74.97 cm < DBH < 103 cm) density
- Weevil species richness
- Woodlouse species richness

- Soil exchangeable aluminium
- Soil available phosphorus
- Soil bulk density
- Soil C/N ratio
- Soil exchangeable calcium
- Soil exchangeable iron
- Soil exchangeable magnesium
- Soil exchangeable manganese
- Soil Na/Ca ratio
- Soil pH
- Soil exchangeable potassium
- Soil exchangeable sodium
- Total N in soil
- Volume of lying holly dead wood
- Volume of lying oak dead wood
- Volume of standing beech dead wood
- Volume of standing dead wood
- Volume of standing holly dead wood
- Volume of standing oak dead wood

242 Table 1: Ecological variables measured split into five different categories. DBH is the diameter at breast height.

243

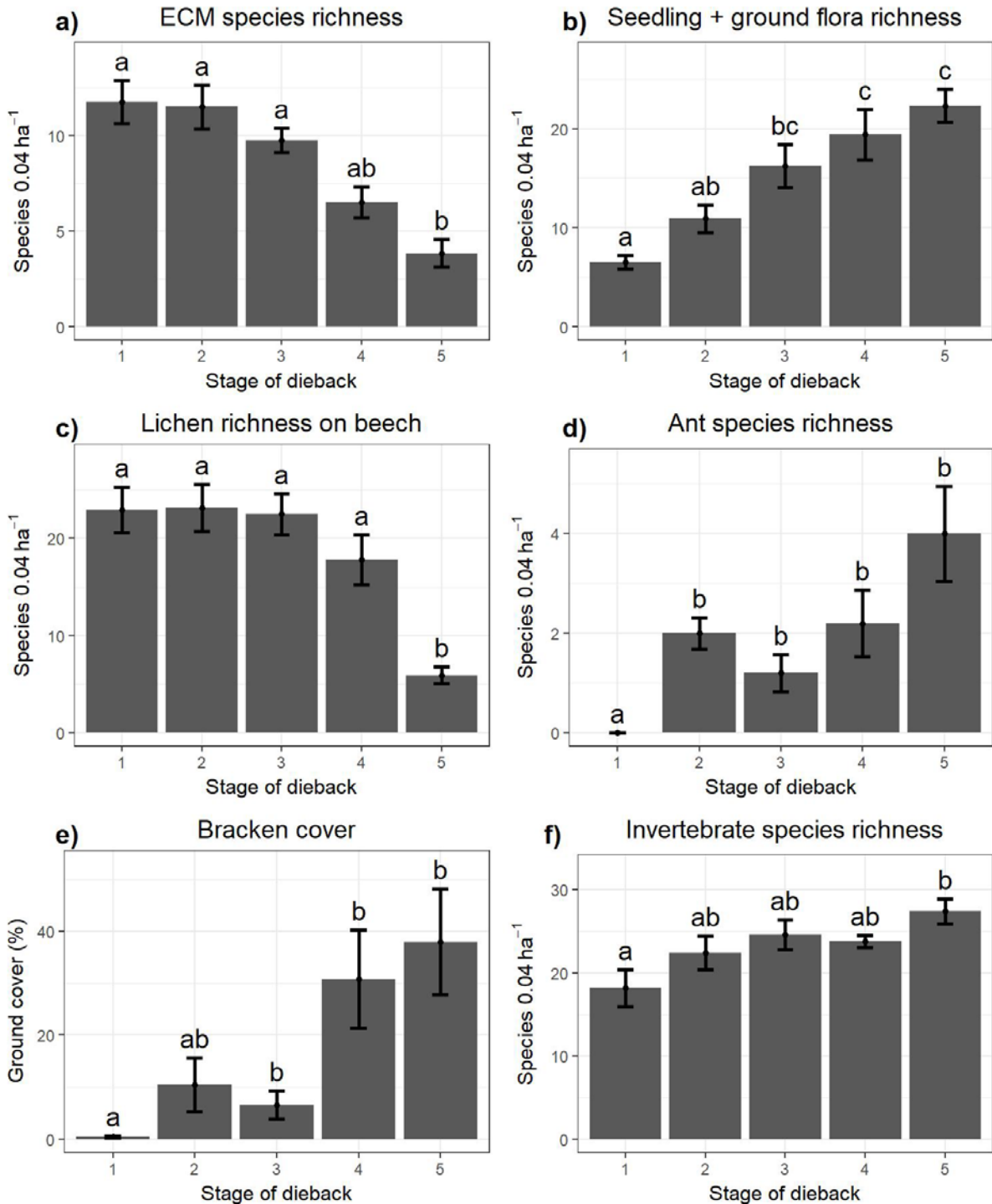
244 3. Results

245 35 of the 102 measured ecological variables differed significantly between at least two stages of the
246 beech dieback gradient. All five categories of ecological variables tested (i.e. compositional, structural
247 etc) had at least two variables that showed a significant response to beech decline (Table 2).

248

249 3.1. Composition variables

250 Seventeen out of 35 composition indicators differed significantly across the dieback gradients (Table
251 2). The density of beech trees ($X^2(4) = 47.846, p < 0.001$) differed significantly in seven out of 10
252 pairwise stages comparisons. ECM species richness ($F(4,55) = 13.974, p < 0.001$) (Fig. 2a), total
253 ground flora species richness ($F(4,55) = 13.059, p < 0.001$) (Fig. 2b) and ground flora species
254 richness excluding woody plants ($F(4,55) = 14.542, p < 0.001$) differed significantly in five pairwise
255 stages comparisons. Lichen species richness on beech ($F(4,55) = 17.429, p < 0.001$) (Fig. 2c), grass
256 cover ($F(4,55) = 11.981, p < 0.001$), ant species richness ($X^2(4) = 14.554, p = 0.006$) (Fig. 2d) and
257 the density of palatable seedlings ($X^2(4) = 14.322, p = 0.006$) differed significantly in four pairwise
258 stages comparisons. Two indicators differed significantly in three pairwise stages comparisons,
259 namely total lichen species richness ($F(4,55) = 4.207, p = 0.005$) and density of beech seedlings (X^2
260 (4) = 10.046, $p = 0.040$). Bracken cover ($X^2(4) = 14.290, p = 0.006$) (Fig. 2e) differed significantly in
261 two pairwise stages comparisons, while seedling species richness ($F(4,55) = 4.003, p = 0.006$) and
262 ground-dwelling invertebrate species richness ($F(4,55) = 3.782, p = 0.019$) (Fig. 2f) differed
263 significantly in one of the pairwise stages comparisons. Litter cover ($X^2(4) = 40.496, p < 0.001$) (Fig.
264 3a) differed significantly in six pairwise stages comparisons, as did the percent of bramble cover (X^2
265 (4) = 33.230, $p < 0.001$).



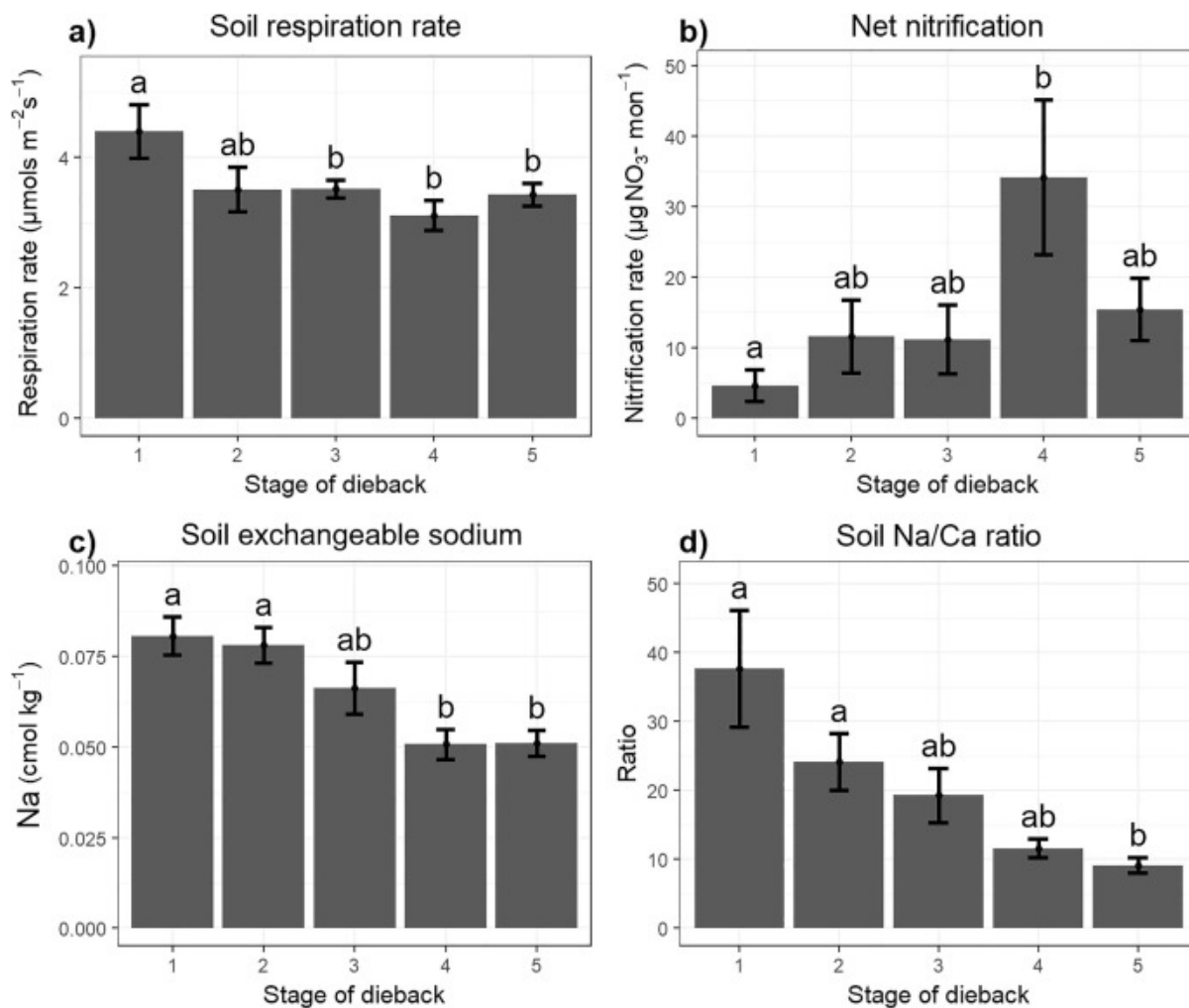
266
 267 Fig. 2: Mean values of composition variables measured across the stages of dieback (1=Intact;
 268 5=Total dieback). The black bars indicate the standard error of the mean. Means grouped by the same
 269 letter are not significantly different ($p < 0.05$, Tukey HSD test or Dunn's test).

270

271 3.2. Functional process variables

272 Two out of four functional processes variables differed significantly over the dieback gradient. These
 273 were the soil respiration rate ($X^2(4) = 12.875, p = 0.012$) (Fig. 3a), which differed significantly in
 274 three pairwise stages comparisons, and net nitrification ($X^2(4) = 2.616, p = 0.046$) (Fig. 3b), which

275 differed significantly in one pairwise stages comparison. The net ammonification rate and net N
 276 mineralisation rate did not differ significantly.
 277



278
 279 Fig. 3: Mean values of functional processes and edaphic variables measured across the stages of
 280 dieback. The black bars indicate the standard error of the mean. Means grouped by the same letter are
 281 not significantly different ($p < 0.05$, Tukey HSD test or Dunn's test).
 282

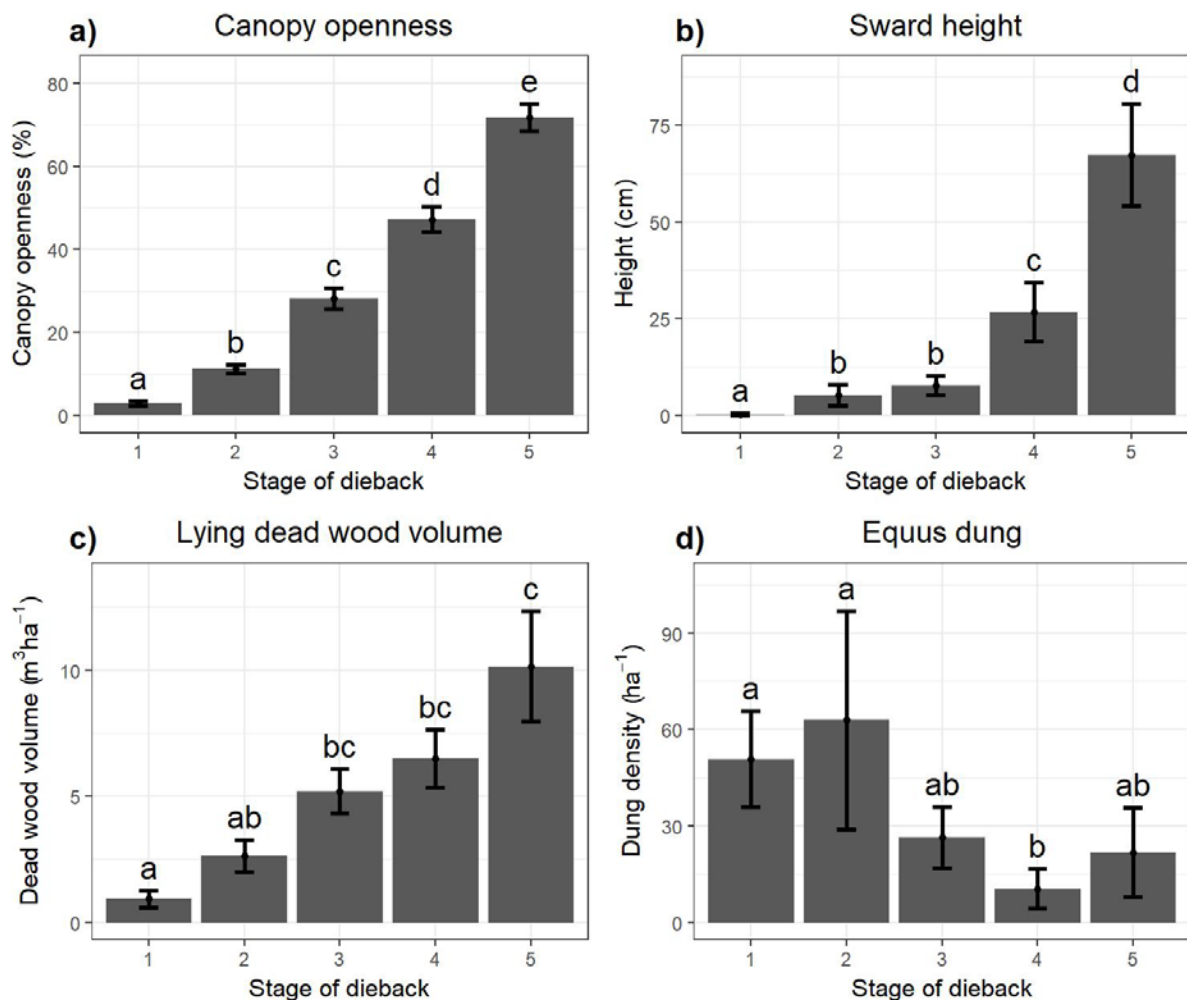
283 3.3. Edaphic variables

284 Three out of 29 woodland edaphic condition variables differed significantly across the dieback
 285 gradient (Table 2). Soil exchangeable sodium ($F(4,55) = 8.307, p < 0.001$) (Fig. 3c) differed
 286 significantly in four pairwise stages comparisons, and the sodium/calcium ratio ($F(4,55) = 8.787, p <$
 287 0.001) (Fig. 3d) and calcium/aluminium ratio each differed significantly in two pairwise stages
 288 comparisons.
 289

290 3.4. Structure variables

291 Ten out of 22 of the woodland structure variables differed significantly across the dieback gradients.
 292 Aboveground woody tree biomass ($F(4,55) = 11.748, p < 0.001$) and beech biomass ($X^2(4) = 53.528,$
 293 $p < 0.001$) differed significantly in all stages, as did canopy openness ($F(4,55) = 193.434, p < 0.001$
 294 (Fig. 4a). Sward height ($X^2(4) = 37.566, p < 0.001$) (Fig. 4b), differed significantly in seven pairwise
 295 stages comparisons. Understorey openness ($X^2(4) = 19.516, p = 0.001$) differed significantly in five
 296 pairwise stages comparisons. Total lying dead wood ($F(4,55) = 11.755, p < 0.001$) (Fig. 4c) and
 297 beech dead wood volume ($F(4,55) = 9.602, p < 0.001$) differed among four pairwise stage
 298 comparisons. The other woodland structure indicators that varied significantly over the dieback
 299 gradient were the density of large and small beech trees, and the amount of leaf loss from beech
 300 (Table 2).

301



302
 303 Fig. 4: Mean values of structure variables measured across the stages of dieback. The black bars
 304 indicate the standard error of the mean. Means grouped by the same letter are not significantly
 305 different ($p < 0.05$, Tukey HSD test or Dunn's test).

306

Variable	F-value	p-value		Variable	F-value	p-value
Ground flora species richness	14.542	< 0.001		Canopy openness	193.434	< 0.001
ECM species richness	13.974	< 0.001		Beech biomass	53.528	< 0.001
Seedling and ground flora species richness	13.059	< 0.001		Sward height	37.566	< 0.001
Beech tree density	47.846	< 0.001		Lying dead wood volume (all species)	11.755	< 0.001
<i>Rubus</i> sp. ground cover	33.23	< 0.001		Lying dead wood volume of beech	9.602	< 0.001
Grass cover	11.981	< 0.001		Aboveground woody tree biomass	11.748	< 0.001
Litter cover	40.496	< 0.001		Total C in stand	32.912	< 0.001
Lichen species richness on beech	17.429	< 0.001		Understorey openness	19.516	0.001
Total lichen species richness	4.207	0.005		Beech tree leaf loss	10.889	0.012

Large beech trees (68.32 cm < DBH < 74.97 cm) density	12.916	0.005		Unhealthiness of beech trees*	4.023	0.019
Ant species richness	14.554	0.006		Bare ground and moss cover	7.276	0.001
Tree seedling species richness	4.003	0.006		<i>Equus</i> dung density (proportional)	12.63	0.013
Palatable seedling density	14.322	0.006		Soil Na/Ca ratio	8.787	< 0.001
Bracken cover	14.29	0.006		Soil exchangeable sodium	8.307	< 0.001
Ground-dwelling invertebrates species richness	3.782	0.019		Ca/Al ratio	3.815	0.022
Beech seedling density	10.046	0.04		Soil respiration rate	12.875	0.012
Small beech trees (10 cm < DBH < 59.59 cm) density	8.072	0.045		Net nitrification	2.616	0.046

307 Table 2: Significant ANOVA results of the ecological variables tested as indicators across the stages
308 of woodland stand dieback, sorted by ecological category. Bold values indicate significant results.

309 D.f. = 4 in each case, except where indicated (*), where d.f. = 3 owing to there being no beech
310 individuals present in the Total dieback survey plots. All ANOVA results are found in Table S3.
311

312 3.5. Disturbance variables

313 Three of the 12 disturbance variables measured changed significantly over the gradient of dieback.
314 These were the bare ground and moss cover ($F(4,25) = 7.276, p = 0.001$), which differed significantly
315 in three pairwise stages comparisons, and the related measures of total ($X^2(4) = 11.614, p = 0.020$)
316 (Fig. 3d) and proportional *Equus* dung density ($X^2(4) = 12.630, p = 0.013$).

318 4. Discussion

319 The results presented here support our initial hypothesis that a selection of ecological variables,
320 representing a diversity of components of the woodland ecosystem (i.e. from edaphic conditions to
321 species composition), can be used at the stand scale as indicators of woodland ecological condition
322 (Noss, 1990; Gao et al., 2015; Lawley et al., 2016). We were able to show this based on their
323 sensitivity to a gradient of stand dieback. We observed some ecological variables that changed
324 systematically (either positively or negatively) across most of the sequential stages of dieback. In
325 addition, some variables changed significantly between two or more stages, but not in a systemic way
326 over the dieback gradient.

327
328 Variables describing forest composition are often considered a key indicator of woodland condition.
329 While they are included in the monitoring schemes of numerous national and international forest
330 health monitoring programmes (e.g. EEA, 2012; the ICP framework (Michel and Seidling, 2016);
331 National Forest Inventories (Chirici et al., 2012)), this is typically restricted to assessments of tree
332 species composition due to the need for taxonomic expertise for other taxonomic groups. In this study,
333 ecological variables demonstrating the strongest potential as condition indicators included the species
334 richness of ECM fungi and epiphytic lichens, which both declined over the gradient of dieback,
335 decreasing by 67% and 32%, respectively, by the final stage of the dieback gradient. Additionally, the
336 species richness of vascular ground flora and ground-dwelling arthropods demonstrate potential as
337 indicators as they increased with dieback, increasing by over 14 (420%) and nine (50%) species,
338 respectively, by the Total dieback stage as canopy cover decreased (see Supplementary Material).
339 Changes in ECM fungal species richness over spatial and temporal gradients of forest condition have
340 also been explored by other authors. For example, Treu et al. (2014) found that ECM species richness
341 declined as the BA of lodgepole pine (*Pinus contorta* var. *latifolia*) declined in Canadian forests,
342 following a stand-destroying beetle attack. Other studies have highlighted a decline in ECM diversity
343 over certain gradients, including temperature, nitrogen deposition and the health of individual trees
344 (Power and Ashmore, 1996; Kovács et al., 2000; Lilleskov et al., 2002; Cox et al., 2010; Suz et al
345 2014; van der Linde et al., 2018).

346
347 Similarly, the occurrence of epiphytic lichen have been found to decline significantly along gradients
348 of increasing forest disturbance in the form of management level, from 'natural' to 'very altered'

349 (Angelstam and Dönz-Breuss, 2004). In Romania, Ardelean et al. (2015) also found that management-
350 induced disturbance significantly decreased lichen species richness in forest landscapes with long
351 stand continuity. While the two aforementioned studies focused largely on management intensity
352 gradients, the results from our study indicate that stand dieback has a similar effect. Thus, our results
353 further support the suggestion made by Keddy and Drummond (1996) that epiphytic lichen
354 communities can provide a useful indicator of the condition of temperate forest ecosystems.

355

356 Floristic diversity studies that examined light gradients in European and North American forests show
357 similar trends to the findings in this study (Tinya et al., 2009; van Couwenberghe et al., 2011; Neufeld
358 and Young, 2014; Sabatini et al., 2014); that is, observed increases in plant species richness are
359 positively related to an increase in light availability.

360

361 Although some of ecological variables assessed in this study are potentially useful indicators of beech
362 woodland dieback, none of these measures differed systematically between every dieback stage.

363 Therefore, there may be a need to use a suite of indicators, rather than a single indicator in isolation
364 (e.g. Ferris and Humphrey 1999; Aubin et al., 2013; Sabatini et al., 2016), a finding that has been
365 found in other ecosystems subject to disturbance (Fournier et al., 2015). However, as recorded here,
366 ECM and ground flora species richness exhibited negative and positive trends with dieback,
367 respectively. These contrasting trends suggest that using combination measures of the two taxa in
368 assessments may be of value in detecting changing woodland condition.

369

370 We show that some soil functional processes and edaphic condition variables properties are relatively
371 sensitive to stand dieback and therefore could be used as indicators of condition. For example, the soil
372 exchangeable sodium varied significantly across the dieback gradient, decreasing by 37% when
373 comparing the Total dieback stage to the Intact stage. Similarly, the sodium/calcium ratio decreased
374 by > 75% from Intact to Total dieback stages. Soil respiration rate was another variable that showed
375 significant variation, decreasing by approximately a third between the Intact and Major dieback
376 stages. However, while the soil variables measured here could potentially be used as indicators of
377 woodland ecosystem condition, further research is required to verify the extent to which they are
378 generally applicable. Previous research has demonstrated that soil respiration in temperate forest
379 stands can be very variable (Priwitzer et al., 2013) and rates are influenced by a wide range of factors
380 including soil moisture and temperature, as well as the species present (Smith and Johnson, 2004).

381

382 Effective structural woodland condition indicators identified in this study included stand biomass,
383 sward height, canopy openness and the volume of lying dead wood. The biomass of beech was very
384 sensitive to dieback and declined sequentially at each stage over the gradient, while lying dead wood
385 increased positively with dieback. However, owing to the spatial variability in dead wood volume,

386 only the Total dieback stage was found to be associated with significantly higher values when
387 compared to the other stages. Increases in dead wood volume and canopy openness have obvious
388 links to mortality of canopy dominant tree species, and are therefore closely associated with dieback
389 (Anderegg et al., 2013). It is therefore unsurprising that these variables increased with stand dieback
390 and were therefore found to be effective indicators of condition. It has previously been observed that
391 both dead wood volume and canopy openness often correlate with biodiversity measures (Gao et al.,
392 2014, 2015), making them consistently important aspects of forest and woodland condition
393 assessments (Noss, 1999; Hagan and Whitman, 2006; Rondeux and Sanchez, 2010). This is especially
394 true for dead wood, which provides habitats for many forest-dwelling species, including invertebrates
395 (Jabin et al., 2004), lichens (Humphrey et al., 2002) and wood-inhabiting fungi (Nordén and Paltto,
396 2001; Penttilä et al., 2004). However, as pointed out by Rondeux and Sanchez (2010) in their review
397 of commonly-used biodiversity indicators, while dead wood volume is a useful measurement, it often
398 displays greater variability than other structural forest metrics. Site-specific information may therefore
399 be required to support its effective use as an indicator.

400

401 It is also pertinent to consider those variables that did not vary significantly across the dieback
402 gradient. These included a number of composition variables, including total density of tree seedlings,
403 species richness of invertebrate groups such as spiders and carabid beetles, and density of oak or
404 beech saplings. The lack of any significant impact on carabids and spiders is particularly surprising, as
405 previous research in conifer plantations in the UK and Canada identified a significant negative
406 relationship between carabid diversity and canopy cover (Spake et al., 2016), and spider diversity and
407 harvesting amount (Aubin et al., 2013). However, both these studies used a trait-based approach,
408 which is different to the approach taken here. Furthermore, the reason for carabid beetle trends
409 observed in this study is possibly due to different carabid species favouring different levels of canopy
410 cover (e.g. Taboada et al., 2006), which cannot be analysed using species richness measures.

411

412 Interpretation of these results should consider the particular characteristics of the field site examined
413 here; as a Royal Hunting Forest that is also used for livestock 'commoning' (the right to release
414 animals into the forest), herbivore pressure is universally high (Newton et al., 2013), and
415 consequently both seedling and sapling densities were very low throughout the dieback gradients.
416 Interestingly, based on dung counts, woodland dieback was associated with an increase in browsing
417 by horses (*Equus* sp.) but not by deer (*Cervus* sp.); *Equus* dung decreased by almost 80% by the
418 Major dieback stage. However, the dramatic decrease may be due to increased decomposition rates in
419 areas with less canopy cover; to determine how much of an effect decay rates have, studies are needed
420 to be carried out in the specific ecosystem first (Zabek et al., 2016). Many functional measures also
421 did not vary significantly along the gradients, including net N mineralisation, soil C/N ratio, nitrate
422 concentration, soil pH or electrical conductivity. Examples of structural variables that did not vary

423 significantly included understorey cover, soil bulk density, soil organic matter content, and mean tree
424 height. This indicates that some of those variables that are standard measures of woodland
425 ecosystems, such as canopy height and shrub cover (Angelstam and Dönz-Breuss 2004), are not
426 necessarily effective as indicators. Again, however, the particular characteristics of this field site need
427 to be borne in mind when interpreting the results; for example soil bulk density values were relatively
428 high throughout the dieback gradients, reflecting the pervasive influence of trampling by large
429 herbivores.

430

431 While this investigation has demonstrated that degradation of woodland condition can be identified
432 using a number of ecological variables that are sensitive indicators of dieback, and the potential value
433 of using gradients of forest and woodland condition to test the effectiveness of different indicators, the
434 results should clearly be interpreted with caution. Limitations of the study included the choice of
435 measurement variables; although a large number of variables were included, additional potentially
436 highly sensitive ecological variables along a woodland dieback gradient could potentially have been
437 selected. Comparison with lists of indicators proposed by Angelstam and Dönz-Breuss (2004) and
438 Keddy and Drummond (1996) show a close correspondence with those measured in this study, but
439 these lists included populations of specialised vertebrates (e.g. bat and woodpecker species) and
440 epiphytic bryophytes, which were not considered here. A further limitation relates to replication.
441 While twelve replicate beech dieback gradients were surveyed in the current study, these were all
442 located within a single protected area; application of the results obtained here to other geographical
443 areas would require additional verification. Previous multi-site comparison of indicator performance
444 has highlighted pronounced variation between areas. For example, in their evaluation of forest
445 biodiversity indicators across a range of European sites, Angelstam and Dönz-Breuss (2004) found
446 that only two indicators gave consistent results across all sites, namely the amount of dead wood and
447 the frequency of occurrence of uprooted trees. Similarly, in an examination of forest disturbance
448 gradients in four study areas in Latin America, Newton et al. (2007) found contrasting responses in
449 different areas. For example, in the Highlands of Chiapas in Mexico, highly significant correlations
450 were obtained between BA and both soil organic matter content and bulk density, but no such
451 correlations were found in two of the other study areas, supporting the results of the current
452 investigation. With respect to floristic species richness, a significant correlation with BA was found in
453 only one of the four areas. Such variation implies that individual indicator sets may need to be
454 adapted and tested for each individual forest area of interest.

455

456 **5. Conclusion**

457 This original work indicates which ecological variables changed significantly over a specific gradient
458 of declining woodland condition, enabling the detection of important changes at and between different
459 stages of degradation. The major findings suggest that several different structural, functional and

460 compositional variables could all be used as indicators of woodland condition. However, focusing on
461 variables which are not typically closely associated with dieback and therefore the primary criterion
462 of BA change (e.g. beech biomass), it is the composition variables, most notably ECM fungi and
463 ground flora species richness, which could be used as condition indicators, as these variables
464 demonstrated large significant declines over the dieback gradient. Functional variables including the
465 soil respiration rate, Na/Ca soil ratio and net nitrification also all changed significantly over the
466 dieback gradient and therefore could also be used as indicators of condition.

467

468 When developing monitoring plans in order to achieve effective woodland management and
469 conservation strategies, results here suggest that at least ECM fungi and ground flora species richness
470 should be recorded, together with a few cheap-to-measure structural indicators that changed
471 significantly over the gradient, such as canopy openness. With additional resources, measuring soil
472 function and content as well could yield a fuller evaluation of condition. Other things which are
473 important to note for inclusion in future plans are that the results here detail changes in the ecological
474 condition of the forest without any management interventions, and that the cost and time requirements
475 and difficulty of continued measurement need to be considered (see sections 2 and 3 in
476 Supplementary Material for more detail). This research could be further enhanced in future by using
477 complementary studies or a greater range of indicators, such as additional measures of faunal diversity
478 (Gao et al. 2015).

479

480 **Acknowledgements**

481 We would like to thank the laboratory team at Bangor University, Lisa Malter, Michael Sears, Martin
482 Dymond, Chris Moody and Arjan Gosal for all their help in the field and laboratory, and the Centre
483 for Ecology and Hydrology for loan of equipment. We also gratefully acknowledge the support of
484 Mark Ferryman and Forest Research's Technical Support Unit including, Mark Oram and Steve
485 Coventry at Alice Holt, Farnham for help with field equipment and field work.

486

487 **Funding**

488 This research was funded by the UK Natural Environment Research Council under the BESS
489 programme [grant ref. NE/K01322X/1]. The opinions and views expressed here do not necessarily
490 represent those of the main BESS programme and its directorate. This work also benefited from the
491 Forest Management Adaptation (AdaFor) Project co-financed by the Forestry Commission and the
492 European Union ERDF Fund within the framework of the European INTERREG IVA France
493 (Channel) England Cross-border Cooperation Programme 2007-2015, under the priority to: 'Ensure a
494 sustainable environmental development of the common space'.

495

496 **Declarations of interest**

497 None

498

499 **References**

500 Alexander, M., 2012. Management planning for nature conservation: a theoretical basis and practical
501 guide. Springer, Dordrecht, Netherlands.

502 Allen, C.D., 2009. Climate-induced forest dieback: an escalating global phenomenon? *Unasylva*
503 231/232, 43–49.

504 Allen, C.D., Breshears, D.D., McDowell, N.G., 2015. On underestimation of global vulnerability to
505 tree mortality and forest die-off from hotter drought in the Anthropocene. *Ecosphere* 6.
506 <http://dx.doi.org/10.1890/ES15-00203.1>

507 Amacher, M.C., O'Neil, K.P., Perry, C.H., 2007. Soil vital signs: a new Soil Quality Index (SQI) for
508 assessing forest soil health, Fort Collins, CO, USDA, Forest Service, Rocky Mountain
509 Research Station. available at: http://www.fs.fed.us/rm/pubs/rmrs_rp065.pdf (Accessed 20
510 June 2015).

511 Anderegg, W.R.L., Plavcová, L., Anderegg, L.D.L., Hacke, U.G., Berry, J.A., Field, C.B., 2013.
512 Drought's legacy: multiyear hydraulic deterioration underlies widespread aspen forest die-off
513 and portends increased future risk. *Glob. Change Biol.* 19, 1188-1196.
514 <http://dx.doi.org/10.1111/gcb.12100>

515 Angelstam, P., Dönn-Breuss, M., 2004. Measuring forest biodiversity at the stand scale: an evaluation
516 of indicators in European forest history gradients. *Ecol. Bulletins* 51, 305-332.

517 Ardelean, I.V., Keller C., Scheidegger C., 2015. Effects of management on lichen species richness,
518 ecological traits and community structure in the Rodnei Mountains National Park (Romania).
519 *PLoS ONE* 10, e0145808. <https://doi.org/10.1371/journal.pone.0145808>

520 Aubin, I., Venier, L., Pearce, J., Moretti, M., 2013. Can a trait-based multi-taxa approach improve our
521 assessment of forest management impact on biodiversity? *Biodivers. Conserv.* 22 (12), 2957–
522 2975. <https://doi.org/10.1007/s10531-013-0565-6>.

523 Baycheva-Merger, T., Wolfslehner, B., 2016. Evaluating the implementation of the pan-European
524 criteria and indicators for sustainable forest management – A SWOT analysis. *Ecol. Indic.* 60,
525 1192–1199. <http://dx.doi.org/10.1016/j.ecolind.2015.09.009>

526 Breshears, D.D., Cobb, N.S., Rich, P.M., Price, K.P., Allen, C.D., Balice, R.G., Romme, W.H.,
527 Kastens, J.H., Floyd, M.L., Belnap, J., Anderson, J.J., Myers, O.B., Meyer, C.W., 2005.
528 Regional vegetation die-off in response to global-change-type drought. *P. Natl. Acad. Sci.*
529 *USA* 102, 15144-15148. <http://dx.doi.org/10.1073/pnas.0505734102>.

530 Breshears, D.D., Myers, O.B., Meyer, C.W., Barnes, F.J., Zou, C.B., Allen, C.D., McDowell, N.G.,
531 Pockman, W.T., 2009. Tree die-off in response to global change-type drought: mortality

532 insights from a decade of plant water potential measurements. *Front. Ecol. Environ.* 7, 185-
533 189. <http://dx.doi.org/10.1890/080016>

534 Brunialti, G., Frati, L., Aleffi, M., Marignani, M., Rosati, L., Burrascano, S., Ravera, S., 2010.
535 Lichens and bryophytes as indicators of old-growth features in Mediterranean forests. *Plant*
536 *Biosystems*, 144, 221-233. <http://dx.doi.org/10.1080/11263500903560959>

537 Cantarello, E., Newton, A.C., 2008. Identifying cost-effective indicators to assess the conservation
538 status of forested Natura 2000 sites. *Forest Ecol. Manage.* 256, 815-826.
539 <http://dx.doi.org/10.1016/j.foreco.2008.05.031>

540 Chirici, G., McRoberts, R.E., Winter, S., Bertini, R., Brändli, U.-B., Asensio, I.A., Bastrup-Birk, A.,
541 Rondeux, J., Barsoum, N., Marchetti, M., 2012. National forest inventory contributions to
542 forest biodiversity monitoring. *For. Sci.* 58 (3), 257–268. [http://dx.doi.org/10.5849/forsci.12-](http://dx.doi.org/10.5849/forsci.12-003)
543 [003](http://dx.doi.org/10.5849/forsci.12-003).

544 Cox, F., Barsoum, N., Lilleskov, E.A., Bidartondo, M.I., 2010. Nitrogen availability is a primary
545 determinant of conifer mycorrhizas across complex environmental gradients. *Ecol. Lett.* 13
546 (9), 1103–1113. <https://doi.org/10.1111/j.1461-0248.2010.01494.x>.

547 Csilléry, K., Kunstler, G., Courbaud, B., Allard, D., Lassègues, P., Haslinger, K., Gardiner, B., 2017.
548 Coupled effects of wind-storms and drought on tree mortality across 115 forest stands from
549 the Western Alps and the Jura mountains. *Glob. Change Biol.* 23 (12), 5092–5107.
550 <https://doi.org/10.1111/gcb.13773>

551 Dieler, J., Uhl, E., Biber, P., Müller, J., Rötzer, T., Pretzsch, H., 2017. Effect of forest stand
552 management on species composition, structural diversity, and productivity in the temperate
553 zone of Europe. *Eur. J. For. Res.* 136 (4), 739–766. [https://doi.org/10.1007/s10342-017-1056-](https://doi.org/10.1007/s10342-017-1056-1)
554 [1](https://doi.org/10.1007/s10342-017-1056-1).

555 Dunn, O.J., 1964. Multiple comparisons using rank sums. *Technometrics*, 6, 241–252.

556 EEA, 2012. Streamlining European Biodiversity Indicators 2020: building a future on lessons learnt
557 from the SEBI 2010 process. The European Environment Agency, Luxembourg. EEA
558 Technical report No. 11/2012. [https://www.eea.europa.eu/publications/streamlining-european-](https://www.eea.europa.eu/publications/streamlining-european-biodiversity-indicators-2020)
559 [biodiversity-indicators-2020](https://www.eea.europa.eu/publications/streamlining-european-biodiversity-indicators-2020) (Accessed 20 June 2016).

560 Evans, P.M., Newton, A.C., Cantarello, E., Martin, P., Sanderson, N., Jones, D.L., Barsoum, N.,
561 Cottrell, J.E., A'Hara, S.W., Fuller, L., 2017. Thresholds of biodiversity and ecosystem
562 function in a forest ecosystem undergoing dieback. *Scientific Reports*, 7, 6775
563 <http://dx.doi.org/10.1038/s41598-017-06082-6>

564 Failing, L., Gregory, R., 2003. Ten common mistakes in designing biodiversity indicators for forest
565 policy. *J. Environ. Manage.* 68, 121-132. [http://dx.doi.org/10.1016/S0301-4797\(03\)00014-8](http://dx.doi.org/10.1016/S0301-4797(03)00014-8)

566 Ferris, R., Humphrey, J.W., 1999. A review of potential biodiversity indicators for application in
567 British forests. *Forestry* 72, 313-328. <http://dx.doi.org/10.1093/forestry/72.4.313>

568 Flower, C.E., Gonzalez-Meler, M.A., 2015. Responses of temperate forest productivity to insect and
569 pathogen disturbances. *Annu. Rev. Plant Biol.* 66, 547-569.

570 Foley, J.A., Asner, G.P., Costa, M.H., Coe, M.T., DeFries, R., Gibbs, H.K., Howard, E.A., Olson, S.,
571 Patz, J., Ramankutty, N., Snyder, P., 2007. Amazonia revealed: forest degradation and loss of
572 ecosystem goods and services in the Amazon Basin. *Front. Ecol. Environ.* 5, 25-32.
573 [http://dx.doi.org/10.1890/1540-9295\(2007\)5%5B25:ARFDAL%5D2.0.CO;2](http://dx.doi.org/10.1890/1540-9295(2007)5%5B25:ARFDAL%5D2.0.CO;2)

574 Forest Europe, 2015. Madrid Ministerial Declaration. Extraordinary Ministerial Conference, Madrid,
575 21 October 2015.

576 Fournier, B., Gillet, F., Le Bayon, R.-C., Mitchell, E.A.D., Moretti, M., 2015. Functional responses of
577 multitaxa communities to disturbance and stress gradients in a restored floodplain. *J. Appl.*
578 *Ecol.* 52 (5), 1364–1373. <https://doi.org/10.1111/1365-2664.12493>.

579 Fox, J., Weisberg, S., 2011. *An R companion to applied regression*. Sage, Thousand Oaks CA.

580 Franc, A., Laroussinie, O., Karjalainen, T., 2001. Criteria and indicators for sustainable forest
581 management at the forest management unit level. European Forest Institute, Saarjärvi,
582 Finland.

583 Frost, T.M., Carpenter, S.R., Kratz, T.K., 1992. Choosing ecological indicators: effects of taxonomic
584 aggregation on sensitivity to stress and natural variability, in: *Ecological indicators*. Springer,
585 Boston, MA, pp. 215-227.

586 Gao, T., Hedblom, M., Emilsson, T., Nielsen, A. B., 2014. The role of forest stand structure as
587 biodiversity indicator. *Forest Ecol. Manage.* 330, 82-93.
588 <http://dx.doi.org/10.1016/j.foreco.2014.07.007>

589 Gao T., Nielsen, A.B., Hedblom, M., 2015. Reviewing the strength of evidence of biodiversity
590 indicators for forest ecosystems in Europe. *Ecol. Indic.* 57, 420–434.
591 <http://dx.doi.org/10.1016/j.ecolind.2015.05.028>

592 Gibbons, P., Freudenberger, D., 2006. An overview of methods used to assess vegetation condition at
593 the scale of the site. *Ecol. Manage. Restor.* 7, S10-S17. [http://dx.doi.org/10.1111/j.1442-](http://dx.doi.org/10.1111/j.1442-8903.2006.00286.x)
594 [8903.2006.00286.x](http://dx.doi.org/10.1111/j.1442-8903.2006.00286.x)

595 Games, P.A., Howell, J.F., 1976. Pairwise multiple comparison procedures with unequal N's and/or
596 variances: a Monte Carlo study. *J. Educ. Stat.* 1, 113-125.
597 <http://dx.doi.org/10.3102/10769986001002113>.

598 Hagan, J.M., Whitman, A.A., 2006. Biodiversity indicators for sustainable forestry: simplifying
599 complexity. *J. Forest.* 104, 203-210.

600 Higman, S., Mayers, J., Bass, S., Judd, N., Nussbaum, R., 2005. *Sustainable forestry handbook*.
601 Earthscan, London, UK.

602 Hill, S.L.L., Harfoot, M., Purvis, A., Purves, D.W., Collen, B., Newbold, T., Burgess, N. D., Mace,
603 G.M., 2016. Reconciling biodiversity indicators to guide understanding and action. *Conserv.*
604 *Lett.* 9, 405-412. <http://dx.doi.org/10.1111/conl.12291>

605 Humphrey, J.W., Davey, S., Peace, A.J., Ferris, R., Harding, K., 2002. Lichens and bryophyte
606 communities of planted and semi-natural forests in Britain: the influence of site type, stand
607 structure and dead wood. *Biol. Conserv.* 107, 165-180. [http://dx.doi.org/10.1016/S0006-](http://dx.doi.org/10.1016/S0006-3207(02)00057-5)
608 [3207\(02\)00057-5](http://dx.doi.org/10.1016/S0006-3207(02)00057-5)

609 Hyman, J.B., Leibowitz, S.G., 2001. JSEM: a framework for identifying and evaluating indicators.
610 *Environ. Monitor. Assess.* 66, 207-232.

611 Isbell, F., Craven, D., Connolly, J., Loreau, M., Schmid, B., Beierkuhnlein, C., Bezemer, T.M., Bonin,
612 C., Bruelheide, H., de Luca, E., Ebeling, A., Griffin, J.N., Guo, Q., Hautier, Y., Hector, A.,
613 Jentsch, A., Kreyling, J., Lanta, V., Manning, P., Meyer, S.T., Mori, A.S., Naeem, S.,
614 Niklaus, P.A., Polley, H.W., Reich, P.B., Roscher, C., Seabloom, E.W., Smith, M.D., Thakur,
615 M.P., Tilman, D., Tracy, B.F., van der Putten, W.H., van Ruijven, J., Weigelt, A., Weisser,
616 W.W., Wilsey, B., Eisenhauer, N., 2015. Biodiversity increases the resistance of ecosystem
617 productivity to climate extremes. *Nature.* 526, 574. <http://dx.doi.org/10.1038/nature15374>.

618 Jabin, M., Mohr, D., Kappes, H., Topp, W., 2004. Influence of dead wood on density of soil macro-
619 arthropods in a managed oak–beech forest. *Forest Ecol. Manage.* 194, 61-69.

620 Jones, D.T., Susilo, F.X., Bignell, D.E., Hardiwinoto, S., Gillison, A.N., Eggleton, P., 2003. Termite
621 assemblage collapse along a land-use intensification gradient in lowland central Sumatra,
622 Indonesia. *J. Appl. Ecol.* 40, 380–391. <http://dx.doi.org/10.1046/j.1365-2664.2003.00794.x>

623 Jung, T., Pérez-Sierra, A., Durán, A., Jung, M.H., Balci, Y., Scanu, B., 2018. Canker and decline
624 diseases caused by soil-and airborne *Phytophthora* species in forests and
625 woodlands. *Persoonia* 40, 82-220.

626 JNCC, 2004. Common Standard Monitoring guidance for woodland habitats. Joint Nature
627 Conservation Committee, Peterborough. http://jncc.defra.gov.uk/pdf/CSM_woodland.pdf
628 (Accessed 18 June 2016).

629 Keddy, P.A., Drummond, C.G., 1996. Ecological properties for the evaluation, management, and
630 restoration of temperate deciduous forest ecosystems. *Ecol. Appl.* 6, 748-762.
631 <http://dx.doi.org/10.2307/2269480>

632 Kovács, G., Pausch, M., Urban, A., 2000. Diversity of ectomycorrhizal morphotypes and oak decline.
633 *Phyton.* 40, 109–116.

634 Larrieu, L., Gosselin, F., Archaux, F., Chevalier, R., Corriol, G., Dauffy-Richard, E., Deconchat, M.,
635 Gosselin, M., Ladet, S., Savoie, J.-M., Tillon, L., Bouget, C., 2018. Cost-efficiency of cross-
636 taxon surrogates in temperate forests. *Ecol. Indic.* 87, 56–65.
637 <http://www.sciencedirect.com/science/article/pii/S1470160X17308348>.

638 Lawley, V., Lewis, M., Clarke, K., Ostendorf, B., 2016. Site-based and remote sensing methods for
639 monitoring indicators of vegetation condition: an Australian review. *Ecol. Indic.* 60, 1273-
640 1283. <http://dx.doi.org/10.1016/j.ecolind.2015.03.021>

641 Lewandowski, A.S., Noss, R.F., Parsons, D.R., 2010. The effectiveness of surrogate taxa for the
642 representation of biodiversity. *Conserv. Biol.* 24, 1367-1377.
643 <http://dx.doi.org/10.1111/j.1523-1739.2010.01513.x>

644 Lilleskov, E.A., Fahey, T.J., Horton, T.R., Lovett, G.M., 2002. Belowground ectomycorrhizal fungal
645 community change over a nitrogen deposition gradient in Alaska. *Ecol.* 83, 104-115.
646 [http://dx.doi.org/10.1890/0012-9658\(2002\)083%5B0104:BEFCCO%5D2.0.CO;2](http://dx.doi.org/10.1890/0012-9658(2002)083%5B0104:BEFCCO%5D2.0.CO;2)

647 Lindenmayer, D.B., Margules, C.R., Botkin, D., 2000. Indicators of forest sustainability biodiversity:
648 the selection of forest indicator species. *Conserv. Biol.* 14, 941–950.

649 Lindenmayer D.B., Franklin J.F., Fischer J., 2006. General management principles and a checklist of
650 strategies to guide forest biodiversity conservation. *Biol. Conserv.* 131, 433 –445.
651 <http://dx.doi.org/10.1016/j.biocon.2006.02.019>

652 Lindenmayer, D.B., Barton, P.S., Lane, P.W., Westgate, M.J., Mcburney, L., Blair, D., Gibbons, P.,
653 Likens, G.E., 2014. An empirical assessment and comparison of species-based and habitat-
654 based surrogates: a case study of forest vertebrates and large old trees. *PLoS ONE* 9 (2),
655 e9807. <http://dx.doi.org/10.1371/journal.pone.0089807>

656 Lindenmayer, D.B., Messier C., Sato C., 2016. Avoiding ecosystem collapse in managed forest
657 ecosystems. *Front. Ecol. Environ.* 14, 561–568. <http://dx.doi.org/10.1002/fee.1434>

658 Liow, L.H., Sodhi, N.S., Elmqvist, T.H., 2001. Bee diversity along a disturbance gradient in tropical
659 lowland forests of south-east Asia. *J. Appl. Ecol.* 38, 180–192.
660 <http://dx.doi.org/10.1046/j.1365-2664.2001.00582.x>

661 Ludwig, J.A., Tongway, D.J., Bastin, G.N., James, C.D., 2004. Monitoring ecological indicators of
662 rangeland functional integrity and their relation to biodiversity at local to regional scales.
663 *Austral Ecol.* 29 (1), 108-120. <http://dx.doi.org/10.1111/j.1442-9993.2004.01349.x>

664 Mahanty, S., Stacey, N., Holland, P., Wright, A., Menzies, S., 2007. Learning to learn: designing
665 monitoring plans in the pacific islands international waters project. *Ocean Coast. Manage* 50,
666 392-410. <http://dx.doi.org/10.1016/j.ocecoaman.2006.09.004>

667 Martin, P., Newton, A.C., Cantarello, E., Evans, P.M., 2017. Analysis of ecological thresholds in a
668 temperate forest undergoing dieback. *PLoS ONE* 12, e0189578.
669 <http://dx.doi.org/10.1371/journal.pone.0189578>

670 Martin, P., Newton, A.C., Evans, P.M., Cantarello, E., 2015. Stand collapse in a temperate forest and
671 its impact on forest structure and biodiversity. *Forest Ecol. Manage.* 358, 130-138.
672 <http://dx.doi.org/10.1016/j.foreco.2015.08.033>

673 MEA, 2005. Millennium Ecosystem Assessment: ecosystems and human well-being. Island Press:
674 Washington, D.C., USA. URL: <http://millenniumassessment.org/en/Global.html> (Accessed 20
675 June 2016).

676 Met Office, 2015. Lyndhurst climate. <http://www.metoffice.gov.uk/public/weather/climate/gcnckhuz6>
677 (Accessed March 2019).

678 Michel A.K., Seidling W., 2016. Forest condition in Europe: 2016 technical report of ICP Forests.
679 Report under the UNECE convention on long-range transboundary air pollution (CLRTAP).
680 BFW Austrian Research Centre for Forests: Vienna. BFW Dokumentation 23/2016.
681 <http://dx.doi.org/10.13140/RG.2.2.35983.38566>

682 Millar, C.I., Stephenson, N.L., 2015. Temperate forest health in an era of emerging megadisturbance.
683 *Science* 349 (6250), 823-826. <http://dx.doi.org/10.1126/science.aaa9933>

684 Neufeld, H.S., Young, D. R., 2014. Ecophysiology of the herbaceous layer in temperate deciduous
685 forests, in: *The herbaceous layer in forests of eastern North America*. Oxford University
686 Press, New York, USA, pp. 38-90.

687 Neupane, P.R., Gauli, A., Mundhenk, P., Hack, C., Köhl, M., 2016. Development of forest
688 biodiversity indicators for a participatory forest biodiversity monitoring system in south
689 Sumatra.
690 [https://www.researchgate.net/profile/Prem_Neupane/publication/317932287_Development_o](https://www.researchgate.net/profile/Prem_Neupane/publication/317932287_Development_of_forest_biodiversity_Indicators_for_a_participatory_forest_biodiversity_monitoring_system_in_South_Sumatra_A_methodological_guideline/links/5951f08f0f7e9b329234e034/Development-of-forest-biodiversity-Indicators-for-a-participatory-forest-biodiversity-monitoring-system-in-South-Sumatra-A-methodological-guideline.pdf)
691 [f_forest_biodiversity_Indicators_for_a_participatory_forest_biodiversity_monitoring_system](https://www.researchgate.net/profile/Prem_Neupane/publication/317932287_Development_of_forest_biodiversity_Indicators_for_a_participatory_forest_biodiversity_monitoring_system_in_South_Sumatra_A_methodological_guideline/links/5951f08f0f7e9b329234e034/Development-of-forest-biodiversity-Indicators-for-a-participatory-forest-biodiversity-monitoring-system-in-South-Sumatra-A-methodological-guideline.pdf)
692 [_in_South_Sumatra_A_methodological_guideline/links/5951f08f0f7e9b329234e034/Develop](https://www.researchgate.net/profile/Prem_Neupane/publication/317932287_Development_of_forest_biodiversity_Indicators_for_a_participatory_forest_biodiversity_monitoring_system_in_South_Sumatra_A_methodological_guideline/links/5951f08f0f7e9b329234e034/Development-of-forest-biodiversity-Indicators-for-a-participatory-forest-biodiversity-monitoring-system-in-South-Sumatra-A-methodological-guideline.pdf)
693 [ment-of-forest-biodiversity-Indicators-for-a-participatory-forest-biodiversity-monitoring-](https://www.researchgate.net/profile/Prem_Neupane/publication/317932287_Development_of_forest_biodiversity_Indicators_for_a_participatory_forest_biodiversity_monitoring_system_in_South_Sumatra_A_methodological_guideline/links/5951f08f0f7e9b329234e034/Development-of-forest-biodiversity-Indicators-for-a-participatory-forest-biodiversity-monitoring-system-in-South-Sumatra-A-methodological-guideline.pdf)
694 [system-in-South-Sumatra-A-methodological-guideline.pdf](https://www.researchgate.net/profile/Prem_Neupane/publication/317932287_Development_of_forest_biodiversity_Indicators_for_a_participatory_forest_biodiversity_monitoring_system_in_South_Sumatra_A_methodological_guideline/links/5951f08f0f7e9b329234e034/Development-of-forest-biodiversity-Indicators-for-a-participatory-forest-biodiversity-monitoring-system-in-South-Sumatra-A-methodological-guideline.pdf) (Accessed 20 June 2016).

695 Newton, A.C., 2010. *Biodiversity in the New Forest*. Pisces Publications, Newbury, UK.

696 Newton, A.C., Cantarello, E., Tejedor, N., Myers, G., 2013. Dynamics and conservation management
697 of a wooded landscape under high herbivore pressure. *Intern. J. Biod.* 15.
698 <http://dx.doi.org/10.1155/2013/273948>

699 Newton, A.C., Echeverría, C., 2014. Analysis of anthropogenic impacts on forest biodiversity as a
700 contribution to empirical theory, in: *Forests and global change*. Cambridge University Press,
701 Cambridge, UK, pp. 417-446.

702 Newton, A.C., Echeverría, C., González-Espinosa, M., Williams-Linera, G., Ramírez-Marcial, N.,
703 Thiers, O., Armesto, J.J., Aravena, J.C., Lara, A., 2007. Testing forest biodiversity indicators
704 by assessing anthropogenic impacts along disturbance gradients, in: *Biodiversity loss and*
705 *conservation in fragmented forest landscapes. The forests of montane Mexico and temperate*
706 *South America*. CABI Publishing, Wallingford, UK, pp. 276-290.

707 Nordén, B., Paltto, H., 2001. Wood-decay fungi in hazel wood: species richness correlated to stand
708 age and dead wood features. *Biol. Conserv.* 101, 1-8. [http://dx.doi.org/10.1016/S0006-](http://dx.doi.org/10.1016/S0006-3207(01)00049-0)
709 [3207\(01\)00049-0](http://dx.doi.org/10.1016/S0006-3207(01)00049-0)

710 Noss, R.F., 1990. Indicators for monitoring biodiversity: a hierarchical approach. *Conserv. Biol.* 4 (4),
711 355-364. <http://dx.doi.org/10.1111/j.1523-1739.1990.tb00309.x>

712 Noss, R.F., 1999. Assessing and monitoring forest biodiversity: a suggested framework and
713 indicators. *Forest Ecol. Manage.* 115, 135-146. [http://dx.doi.org/10.1016/S0378-](http://dx.doi.org/10.1016/S0378-1127(98)00394-6)
714 [1127\(98\)00394-6](http://dx.doi.org/10.1016/S0378-1127(98)00394-6)

715 Ozaki, K., Isono, M., Kawahara, T., Iida, S., Kudo, T., Fukuyama, K., 2006. A mechanistic approach
716 to evaluation of umbrella species as conservation surrogates. *Conserv. Biol.* 20, 1507-1515.

717 Penttilä, R., Siitonen, J., Kuusinen, M., 2004. Polypore diversity in managed and old-growth boreal
718 *Picea abies* forests in southern Finland. *Biol. Conserv.* 117, 271-283.
719 <http://dx.doi.org/10.1016/j.biocon.2003.12.007>

720 Power, S.A., Ashmore, M.R., 1996. Nutrient relations and root mycorrhizal status of healthy and
721 declining beech *Fagus sylvatica* L. in southern Britain. *Water Air Soil Pollut.* 86, 317-333.

722 Priwitzer, T., Capuliak, J., Bošela, M., Schwarz, M. 2013. Preliminary results of soil respiration in
723 beech, spruce and grassy stands. *Forest. J.* 59, 189-196. [http://dx.doi.org/10.2478/v10114-](http://dx.doi.org/10.2478/v10114-011-0026-7)
724 [011-0026-7](http://dx.doi.org/10.2478/v10114-011-0026-7)

725 Rodrigues, A.S.L., Brooks, T.M., 2007. Shortcuts for biodiversity conservation planning: the
726 effectiveness of surrogates. *Annu. Rev. Ecol. Evol. S.* 38, 713-737.
727 <http://dx.doi.org/10.1146/annurev.ecolsys.38.091206.095737>

728 Roloff, A., 1989. Morphological changes in the crowns of European beech (*Fagus sylvatica* L.) and
729 other deciduous tree species, in B. Ulrich (ed.), *International congress on forest decline*
730 *research: state of knowledge and perspectives*, October 2–6, 1, pp. 81–107.

731 Rondeux, J., Sanchez, C., 2010. Review of indicators and field methods for monitoring biodiversity
732 within national forest inventories. *Core variable: dead wood. Environ. Monitor. Assess.* 164,
733 617-630.

734 Sabatini, F.M., Burrascano, S., Tuomisto, H., Blasi, C., 2014. Ground layer plant species turnover and
735 beta diversity in southern-European old-growth forests. *PLoS ONE* 9, e95244.
736 <http://dx.doi.org/10.1371/journal.pone.0095244>

737 Sabatini, F.M., Burrascano, S., Azzella, M.M., Barbatì, A., De Paulis, S., Di Santo, D., Facioni, L.,
738 Giuliarelli, D., Lombardi, F., Maggi, O., Mattioli, W., Parisi, F., Persiani, A., Ravera, S.,
739 Blasi, C., 2016. One taxon does not fit all: herb-layer diversity and stand structural
740 complexity are weak predictors of biodiversity in *Fagus sylvatica* forests. *Ecol. Indic.* 69,
741 126–137. <http://www.sciencedirect.com/science/article/pii/S1470160X16301820>.

742 Sallé, A., Nageleisen, L.-M., Lieutier, F., 2014. Bark and wood boring insects involved in oak
743 declines in Europe: Current knowledge and future prospects in a context of climate change.
744 *For. Ecol. Manage.* 328, 79–93.
745 <http://www.sciencedirect.com/science/article/pii/S037811271400317X>.

746 Simberloff, D., 1997. Flagships, umbrellas, and keystones: is single-species management passe in the
747 landscape era? *Biol. Conserv.* 83, 247–257. [http://dx.doi.org/10.1016/S0006-3207\(97\)00081-](http://dx.doi.org/10.1016/S0006-3207(97)00081-5)
748 [5](http://dx.doi.org/10.1016/S0006-3207(97)00081-5)

749 Smith, D.L., Johnson, L., 2004. Vegetation-mediated changes in microclimate reduce soil respiration
750 as woodlands expand into grasslands. *Ecol.* 85, 3348-3361. <http://dx.doi.org/10.1890/03-0576>

751 Spake, R., Barsoum, N., Newton, A.C., Doncaster, C.P., 2016. Drivers of the composition and
752 diversity of carabid functional traits in UK coniferous plantations. *Forest Ecol. Manage.* 359,
753 300-308. <http://dx.doi.org/10.1016/j.foreco.2015.10.008>

754 Spies, T.A., 1998. Forest structure: a key to the ecosystem. *Northwest Sci.* 72, 34–39.

755 Suz, L.M., Barsoum, N., Benham, S., Dietrich, H.-P., Fetzer, K.D., Fischer, R., García, P., Gehrman,
756 J., Kristöfel, F., Manninger, M., Neagu, S., Nicolas, M., Oldenburger, J., Raspe, S., Sánchez,
757 G., Schröck, H.W., Schubert, A., Verheyen, K., Verstraeten, A., Bidartondo, M.I., 2014.
758 Environmental drivers of ectomycorrhizal communities in Europe's temperate oak forests.
759 *Mol. Ecol.* 23 (22), 5628–5644. <https://doi.org/10.1111/mec.12947>.

760 Taboada, A., Kotze, D.J., Tárrega, R., Salgado, J.M., 2006. Traditional forest management: Do
761 carabid beetles respond to human-created vegetation structures in an oak mosaic landscape?
762 *For. Ecol. Manage.* 237 (1), 436–449.
763 <http://www.sciencedirect.com/science/article/pii/S0378112706009881>.

764 Thiffault, E., Hannam, K.D., Paré, D., Titus, B.D., Hazlett, P.W., Maynard, D.G., Brais, S., 2011.
765 Effects of forest biomass harvesting on soil productivity in boreal and temperate forests — A
766 review. *Environ. Rev.* 19, 278–309. <https://doi.org/10.1139/a11-009>.

767 Tinya, F., Márialigeti, S., Király, I., Németh, B., Ódor, P., 2009. The effect of light conditions on
768 herbs, bryophytes and seedlings of temperate mixed forests in Órség, western Hungary. *Plant*
769 *Ecol.* 204, 69-81.

770 Treu, R., Karst, J., Randall, M., Pec, G.J., Cigan, P.W., Simard, S.W., Cooke, J.E.K., Erbilgin, N.,
771 Cahill, J.F., 2014. Decline of ectomycorrhizal fungi following a mountain pine beetle
772 epidemic. *Ecol.* 95, 1096-1103. <http://dx.doi.org/10.1890/13-1233.1>

773 Trumbore, S., Brando, P., Hartmann, H., 2015. Forest health and global change. *Science* 349, 814-
774 818. <http://dx.doi.org/10.1126/science.aac6759>

775 Tubbs, C.R., 2001. *The New Forest: history, ecology and conservation*. New Forest Ninth Centenary
776 Trust, Hampshire, UK.

777 van Couwenberghe, R., Collet, C., Lacombe, E., Gégout, J.-C., 2011. Abundance response of western
778 European forest species along canopy openness and soil pH gradients. *Forest Ecol. Manage.*
779 262, 1483-1490. <http://dx.doi.org/10.1016/j.foreco.2011.06.049>

780 van der Linde, S., Suz, L.M., Orme, C.D.L., Cox, F., Andreae, H., Asi, E., Atkinson, B., Benham, S.,
781 Carroll, C., Cools, N., De Vos, B., Dietrich, H.-P., Eichhorn, J., Gehrman, J., Grebenc, T.,
782 Gweon, H.S., Hansen, K., Jacob, F., Kristöfel, F., Lech, P., Manninger, M., Martin, J.,
783 Meesenburg, H., Merilä, P., Nicolas, M., Pavlenda, P., Rautio, P., Schaub, M., Schröck, H.-
784 W., Seidling, W., Šrámek, V., Thimonier, A., Thomsen, I.M., Titeux, H., Vanguelova, E.,
785 Verstraeten, A., Vesterdal, L., Waldner, P., Wijk, S., Zhang, Y., Žlindra, D., Bidartondo, M.I.,
786 2018. Environment and host as large-scale controls of ectomycorrhizal fungi. *Nature* 558
787 (7709), 243–248. <https://doi.org/10.1038/s41586-018-0189-9>.

- 788 van Mantgem, P.J., Stephenson, N.L., 2007. Apparent climatically induced increase of tree mortality
789 rates in a temperate forest. *Ecol. Lett.* 10, 909-916. [http://dx.doi.org/10.1111/j.1461-](http://dx.doi.org/10.1111/j.1461-0248.2007.01080.x)
790 [0248.2007.01080.x](http://dx.doi.org/10.1111/j.1461-0248.2007.01080.x)
- 791 Woodall, C.W., Oswalt, C.M., Westfall, J.A., Perry, C.H., Nelson, M.D., Finley, A.O., 2009. An
792 indicator of tree migration in forests of the eastern United States. *Forest Ecol. Manage.* 257,
793 1434-1444. <http://dx.doi.org/10.1016/j.foreco.2008.12.013>
- 794 Zabek, M.A., Berman, D.M., Blomberg, S., Wright, J., 2016. Estimating distribution and abundance
795 of feral horses (*Equus caballus*) in a coniferous plantation in Australia, using line-transect
796 surveys of dung. *Wildl. Res.* 43 (7), 604–614. <https://doi.org/10.1071/WR16015>.
- 797 Zarnoch, S.J., Bechtold, W.A., Stolte, K.W., 2004. Using crown condition variables as indicators of
798 forest health. *Can. J. For. Res.* 34 (5), 1057–1070. <https://doi.org/10.1139/x03-277>.