

## MR histology of advanced atherosclerotic lesions of ApoE- knockout mice

This content has been downloaded from IOPscience. Please scroll down to see the full text.

2016 J. Phys.: Conf. Ser. 677 012008

(<http://iopscience.iop.org/1742-6596/677/1/012008>)

View [the table of contents for this issue](#), or go to the [journal homepage](#) for more

Download details:

IP Address: 92.63.65.142

This content was downloaded on 01/12/2016 at 13:09

Please note that [terms and conditions apply](#).

You may also be interested in:

[Computer aided detection of oral lesions on CT images](#)

S. Galib, F. Islam, M. Abir et al.

[Label-free imaging of goblet cells](#)

S M Zhuo, G Z Wu, J X Chen et al.

[Opto-acoustic diagnostics of the thermal action of high-intensity focused ultrasound on biological tissues: the possibility of its applications and model experiments](#)

Tanya D Khokhlova, Ivan M Pelivanov, Oleg A Sapozhnikov et al.

[Characterization of female breast lesions from optical mammography](#)

Lorenzo Spinelli, Alessandro Torricelli, Antonio Pifferi et al.

[Prediction and Measurement of the Size of Thermal Lesion Induced by High Intensity Focused Ultrasound in a Tissue-Mimicking Phantom](#)

Kang Il Lee and Min Joo Choi

[High intensity focused ultrasound-a surgical technique for the treatment of discrete liver tumours](#)

G ter Haar, D Sinnett and I Rivens

[Acute skin lesions following psoralen plus ultraviolet A radiation investigated by optical coherence tomography](#)

Z M Liu, H Q Zhong, J Zhai et al.

[Imaging colon cancer development in mice: IL-6 deficiency prevents adenoma in azoxymethane-treated Smad3 knockouts](#)

Kaitlin Harpel, Sarah Leung, Photini Faith Rice et al.

## MR histology of advanced atherosclerotic lesions of ApoE-knockout mice

A Naumova<sup>1,2</sup>, V Yarnykh<sup>1,2</sup>, M Ferguson<sup>1</sup>, M Rosenfeld<sup>3</sup>, C Yuan<sup>4</sup>

<sup>1</sup> Vascular Imaging Lab, Department of Radiology, University of Washington, Seattle, WA, USA

<sup>2</sup> Neurobiology Lab, Research Institute of Biology and Biophysics, Tomsk State University, Tomsk, Russian Federation

<sup>3</sup> Department of Pathobiology, University of Washington, Seattle, USA

<sup>4</sup> Departments of Radiology and Bioengineering, Center for Cardiovascular Biology, Institute for Stem Cell and Regenerative Medicine, University of Washington, Seattle, WA, USA

E-mail: nav@uw.edu

### Abstract

The purposes of this study were to examine the feasibility of determining the composition of advanced atherosclerotic plaques in fixed ApoE-knockout mice and to develop a time-efficient microimaging protocol for MR histological imaging on mice. Five formalin-fixed transgenic ApoE-knockout mice were imaged at the 9.4T Bruker BioSpec MR scanner using 3D spoiled gradient-echo sequence with an isotropic field of view of 24 mm<sup>3</sup>; TR 20.8 ms; TE 2.6 ms; flip angle 20°, resulted voxel size 47 x 63 x 94 μm<sup>3</sup>. MRI examination has shown that advanced atherosclerotic lesions of aorta, innominate and carotid arteries in ApoE-knockout mice are characterized by high calcification and presence of the large fibrofatty nodules. MRI quantification of atherosclerotic lesion components corresponded to histological assessment of plaque composition with a correlation coefficient of 0.98.

### 1. Introduction

Transgenic mice are widely used as animal models for the study of atherosclerosis. Apolipoprotein E-knockout (ApoE<sup>-/-</sup>) mice produced by gene-targeting technologies spontaneously develop atherosclerotic lesions similar in morphology to those observed in humans [1, 2]. The major challenges for histological MR imaging of atherosclerotic lesions in mice are the very high-resolution requirement, the need to image long vessel segments, and prohibitively long scan time. Several attempts were made to develop MRI protocols for imaging of atherosclerotic plaques in ApoE<sup>-/-</sup> mice [3-6]. None of these studies have demonstrated the ability of histological MR to characterize the clinically significant advanced atherosclerotic lesions. The purposes of this study were to examine the feasibility of determining the composition of advanced atherosclerotic plaques in fixed ApoE<sup>-/-</sup> mice and to develop a time-efficient microimaging protocol for MR histological imaging on mice.



## 2. Methods

### 2.1. Specimen preparation:

Five transgenic ApoE<sup>-/-</sup> mice (75 weeks old) were perfusion-fixed at physiologic pressure via the left ventricle (24-g  $\frac{3}{4}$ -in Becton Dickinson Angiocath intravenous catheter). The animals were initially perfused with 10mL PBS for 20 seconds followed by a 4-minute perfusion of 10% buffered formalin (Fisher Scientific, Fairlawn, NJ) along with Omniscan (gadodiamide; Amersham Health Inc, NJ), a conventional clinical contrast agent at a volume ratio of 20:1.

### 2.2. MRI:

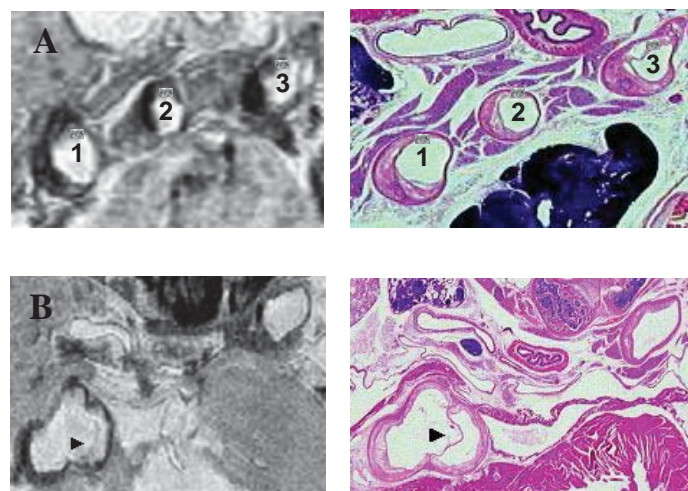
Experiments were performed using a 9.4T Bruker BioSpec MR scanner. 3D spoiled gradient-echo sequence was used with an isotropic FOV of 24 mm<sup>3</sup>; 3D matrix of 512x384x256; TR=20.8ms; TE=2.6ms; flip angle=20°. All MR images had a voxel size of 47x63x94 $\mu$ m<sup>3</sup>. The total scan time was 1 hour 8 min. These scan parameters allowed coverage of major vasculature spanning from the innominate artery bifurcation to the upper margin of the liver.

### 2.3. Histology:

After imaging, the mouse was decalcified in 10% formic acid and then routinely processed en block through graded alcohols, xylene and paraffin. The specimen was embedded in paraffin and 10 micron serial section was collected every 50 microns throughout the whole mouse thorax and stained with Hematoxylin-Eosin. Images obtained with magnetic resonance technique were compared to matched corresponding histology. Anatomic structures such as the aorta, common carotid arteries, spinal cord, myocardium, aortic valve were all used as external fiducial references for alignment of the MR images with the corresponding histology sections. Tissue components in atherosclerotic lesions were identified by histology and then their MR signal properties were characterized.

## 3. Results

Advanced atherosclerotic lesions were found by MR examination in the aorta, aortic arch, innominate and carotid arteries of the mice. Atherosclerotic plaque characteristics, such as plaque area, volume, thickness, and major plaque components, such as necrotic core, calcification, and fibrous tissue were determined. Morphologically, the lesions found in the MR images corresponded closely to the histopathological cross-sections taken from the same location (figure 1). Preliminary results of a pilot study quantifying atherosclerotic lesion components produced a correlation coefficient of 0.98. MR histology, in agreement with prior studies [7, 8], has shown that advanced atherosclerotic lesions of aorta, innominate and carotid arteries in ApoE<sup>-/-</sup> mice are characterized by high calcification and presence of the large fibrofatty nodules.



**Figure 1.** Cross-sectional  $^1\text{H}$  MR images and corresponding histological slices through the mouse thorax at the (A) level of ascending from the aortic arch arteries (1 - innominate artery; 2 - left common carotid artery; 3 - left subclavian artery) and (B) at the level of the aortic root showing a clearly defined aortic valve (arrowhead).

#### 4. Conclusion

This study has shown an ability of advanced atherosclerotic lesions characterization by MR histology on the murine model of atherosclerosis. High-field MRI allows non-invasively determination of atherosclerotic plaque composition and precise quantification of the major plaque components in the different vascular beds. A time efficient MRI protocol, based on a single contrast weighting, was developed using fixed ApoE<sup>-/-</sup> mice and can be used for in vivo studies.

#### Acknowledgements

NIH T32 BCTG and Amgen Inc for MRI scans and histological analysis, Russian Science Foundation (project № 14-45-00040) for data analysis, and Tomsk State University Competitiveness Improvement Program for manuscript preparation. We thank Jerry Ricks for performing of ApoE<sup>-/-</sup> mice perfusion/fixation.

#### References:

- [1] Plump A S, Smith J D, Hayek T, et al 1992 *Cell* **71** 343–353
- [2] Zhang S H, Reddick R L, Piedrahita J A, Maeda N 1992 *Science* **258** 468–471
- [3] Chaabane L, Soulas E C, Contard F, et al 2003 *Invest Radiol* **38(8)** 532-538
- [4] Wiesmann F, Szimtenings M, Frydrychowicz A, et al 2003 *Magn Reson Med* **50(1)** 69-74
- [5] Itskovich V V, Choudhury R P, Aguinaldo J G, et al 2003 *Magn Reson Med* **49(2)** 381-385
- [6] Schneider J E, McAteer M A, Tyler D J, et al 2004 *J Magn Reson Imaging* **20(6)** 981-989
- [7] Rattazzi M, Bennett B J, Bea F, et al 2005 *Arterioscler Thromb Vasc Biol* **25(7)** 1420-1425
- [8] Rosenfeld M E, Polinsky P, Virmani R, et al 2000 *Arterioscler Thromb Vasc Biol* **20(12)** 2587-2592