

Georgia Southern University

Digital Commons@Georgia Southern

The George-Anne

Student Media

1-23-2020

The George-Anne

Follow this and additional works at: <https://digitalcommons.georgiasouthern.edu/george-anne>

Recommended Citation

"The George-Anne" (2020). *The George-Anne*. 3288.

<https://digitalcommons.georgiasouthern.edu/george-anne/3288>

This newspaper is brought to you for free and open access by the Student Media at Digital Commons@Georgia Southern. It has been accepted for inclusion in The George-Anne by an authorized administrator of Digital Commons@Georgia Southern. For more information, please contact digitalcommons@georgiasouthern.edu.

MLK PARADE

Georgia Southern took part in the MLK parade alongside other groups.

Page 6

SGA PRESIDENT RESIGNS

Elections to be held between two executive vice presidents.

Page 5

MUSIC PROGRAM

Georgia Southern announces plans to add a new music industry degree.

Page 6



thegeorgeanne



gamedia group

thegeorgeanne.com

THURSDAY, JANUARY 23, 2020

GEORGIA SOUTHERN UNIVERSITY

VOLUME 94 , ISSUE 16



EVENTS AROUND CAMPUS

THURSDAY
23RD

Spring 2020 Org Fair
11 am - 1 pm
Russell Union Rotunda

Looking to get involved in a student organization? Join us for Student Org Fair on the Statesboro Campus at the Russell Union Rotunda! #GetInvolved!

FRIDAY
24TH

Mistress of Evil
6 pm & 8 pm
Russell Union Theatre

This event is free and open to the public; students, please bring your Eagle ID. Concessions will be available for purchase. Cash only!

WEDNESDAY
29TH

UPB: Skate Party
Starts @7 pm
Williams Center Multipurpose Room

Break out your best gear and skate the night away with us! There will be 3, 45-minute waves in which people can skate: 7 - 7:45 pm; 8 - 8:45 pm; 9 - 9:45 pm. Get there early; sizes are limited. Students, you must bring your Eagle IDs and socks to participate.

THURSDAY
30TH

UPB & OLCs: Vision 2020
5 pm
Williams Center Multipurpose Room

Create a vision board for yourself and/or your student organization for the goals you have for 2020! This event is free to Georgia Southern students. Students, please bring your Eagle ID.



#PETSBORO

Oscar'
Senior biology and psychology double major
He's a laser tag enthusiast.

Want you and your pet to be featured next time? Post your photo on Twitter with the name of your pet and a little bit about you (name, year, and major). Make sure you include #petsboro and tag @GA_Visuals!



M I S C E L L A N Y

Do you have art or creative writing that you would love to share?

Submit your art and/or creative writing to Miscellany at miscellany@georgiasouthern.edu

Make sure you use your Georgia Southern email!



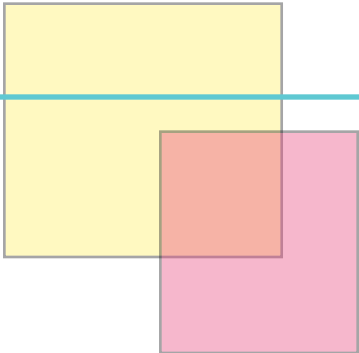
#SeenAtSouthern

Our photographers went out on campus and snapped some photos depicting life at Georgia Southern. Come back every week or follow our Twitter, @GA_Visuals, to see if you have been spotted!



LAUREN SABIA /staff

The Uncivilized Society: a Fashion Extravaganza is coming up on Jan. 24th at the Williams Center: featuring unique, custom pieces from different designers in a show/expo, as well as music and dance performances.



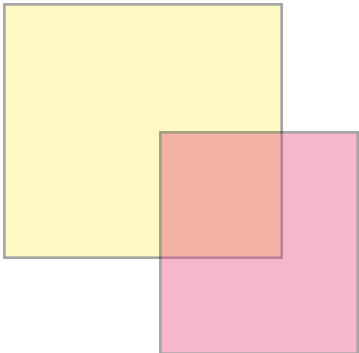
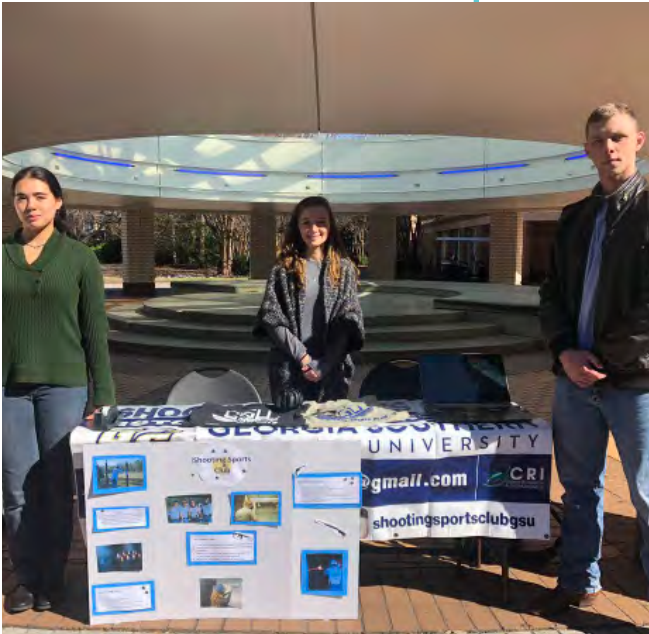
KRISTEN BALLARD/staff

Looking for ways to decorate your room without breaking the bank? Check out the Poster Sale this week, located next to the Tech Corner, from 8 a.m.- 5 p.m. to find reasonably priced posters that will add personality to your dorm room or apartment!



SHAUN BOYCE/staff

The Shooting Sports Club here at Georgia Southern searched for potential new members for their club, with members (from left to right) Rebecca Bracken, Anna Bodolosky and Samuel Lowder - at Rotunda.



STATEMENT OF OPERATIONS

The George-Anne Statesboro Edition is the official student newspaper of the Statesboro campus of Georgia Southern University, operated by GS students using facilities provided by the university. The newspaper is the oldest continuously published newspaper in Bulloch County.

The newspaper is published once weekly, on Thursdays, during most of the academic year. Any questions regarding content should be directed to the student editor email at gaeditor@georgiasouthern.edu.

ADVERTISING: Any advertising inquiries should be directed to ads1@georgiasouthern.edu. The George-Anne receives additional report in part from the Student Activities Budget Committee. For more information, rate cards, or sample publications, contact the advertising manager, ads1@georgiasouthern.edu, or student media director David Simpson. The advertiser is responsible for any errors in advertisements and its liability for adjustments is limited to the amount of space the error occupied in the ad. Further, the newspaper is not responsible for any damages caused due to an ad's omission from a particular edition and its responsibility solely is to reschedule the ad in the next regular edition at the regular advertising rates.

PUBLICATION INFORMATION: The newspaper is printed by The Statesboro Herald in Statesboro, Ga.

NOTICE: One copy of The George-Anne is free to each person. Multiple copies may be purchased for \$1 each by contacting ads1@georgiasouthern.edu. Unauthorized removal of multiple copies from a distribution site constitutes theft under Georgia law, a misdemeanor offense punishable by a fine and/or jail time.

CORRECTIONS: Contact the editor at gaeditor@georgiasouthern.edu for corrections and errors.

THE GEORGE-ANNE MEDIA GROUP: The George-Anne Media Group is made up of print and digital publications within the Office of Student Media. These publications have been designated a public forum for student expression by Georgia Southern University. Student executives in charge of each outlet are authorized to publish or decline to publish in any medium content of all kinds without prior review by any employee of Georgia Southern University. The publisher of all George-Anne Media Group outlets is the Student Media Executive Board, comprised of the editors-in-chief and division managers listed below.

The George-Anne Statesboro Edition weekly newspaper is assembled by The George-Anne Creative Division from content provided by all digital outlets listed below, with additional content and writing by The George-Anne Division.

All George-Anne Media Group outlets are headquartered in the Williams Center. The Office of Student Media administrative office is located in Room 2016.

STAFF LIST

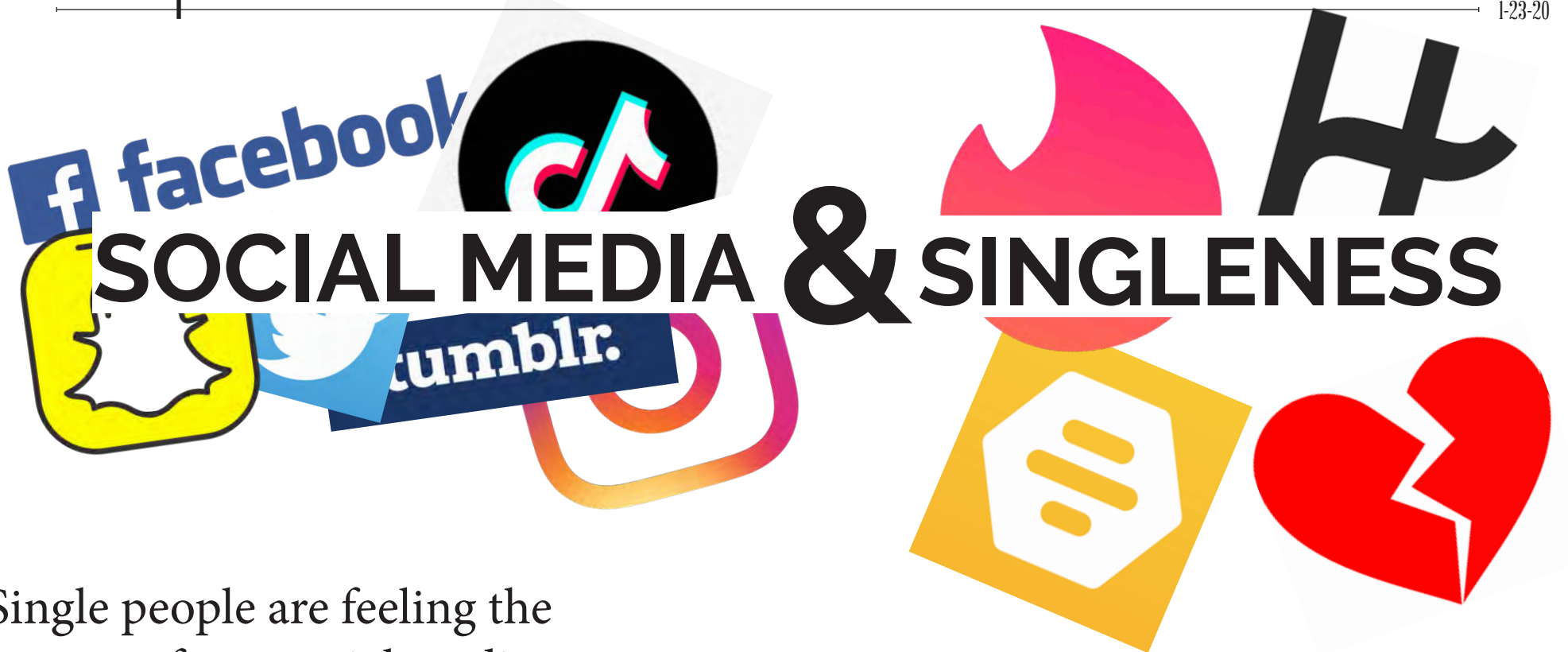
THE GEORGE-ANNE DIVISION

Editor-in-Chief Blakeley Bartee
News Managing Editor Sarah Smith
News Editor Alexis Hampton
Sports Managing Editor Amanda Arnold
Sports Editor Elijah Jackson

THE CREATIVE DIVISION

Creative Editor-in-Chief Rebecca Hooper
Creative Managing Editor Morgan Carr
Project Design Editor Kayla Hill
Photo Editor Isis Mayfield
G-A Designers Lauryn Terry, Emilie Powell, Madison Terry, Daniel Castro

Marketing Manager Alexis Daye Freeman
Business Manager Coy Kirkland
The Studio Editor-in-Chief Lawrence Algee
The Reflector Editor-in-Chief Noelle Walker



Single people are feeling the pressure from social media



ANTHONY BELINFANTE

Anthony is a senior journalism major from Queens, NY.

Social media has put an immense amount of pressure on young people when it comes to dating. It seems like every time we log onto Instagram or Facebook, someone we went to high school with is engaged, already married or starting a family.

Then there's people like you

and me who are single and either feeling relieved that we're not in that situation, or feeling envious and alone. When we post on social media, we often only show the best moments of our lives, or the lives that we want our followers to believe we're living. But when someone who is single sees a friend in a happy and loving relationship that can only be confirmed through hashtags and emojis, that's not what they're thinking about. They're thinking about how single they are, and how they wish that would change.

It's okay to be single, even if everyone you're following is not.

We live in a world where validation comes from likes on Instagram and how many followers you have. The more interesting your life appears through the lens of your

followers, the more likes you receive. Whether we like to admit it or not, we all strive for attention and validation online.

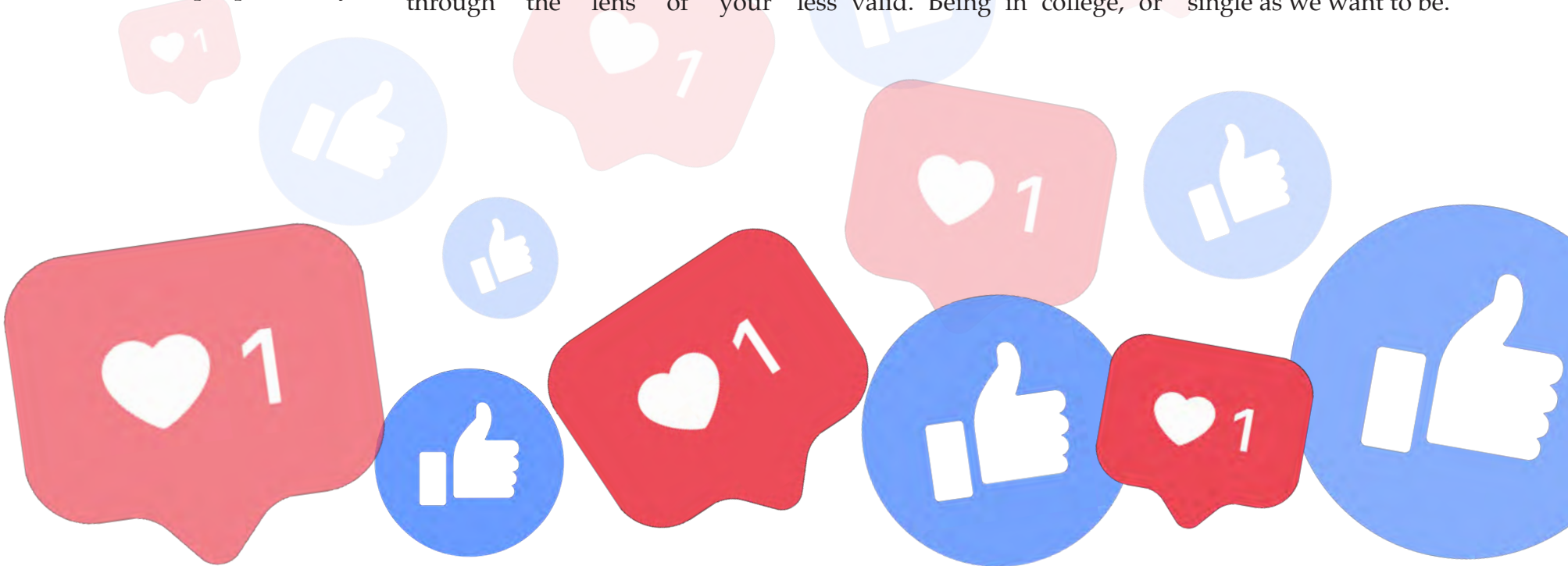
We want our friends to like our pictures, and for strangers to think we're cool. In order to receive the attention we're all subconsciously striving for, oversharing tends to take place. With this being the case for people our age and younger, we are usually exposed to couples who are seemingly living better lives than we do, or at least we think they are because we're single and they're not.

While we sit back and watch as our friends and acquaintances give us unwarranted updates on their love lives, we must remember that being single does not make our own lives, or our Instagram feeds, any less valid. Being in college, or

just being young in general, is all about finding yourself and experiencing life for the first time. Some may choose to do so alone, while others choose to bring a significant other along for the ride.

For the people choosing to walk alone, there is nothing wrong with doing just that, no matter what your Instagram might say. There is absolutely nothing wrong with spending some quality time with yourself. You don't have to be part of a couple to feel fulfilled, both personally and online.

Social media continues to put pressure on the younger generation to find love, and to show our followers that we've found it. It's time to stop letting social media determine when we should be in love. Instead, we should be living our lives as single as we want to be.



Do you have an opinion that needs to be heard?

The George-Anne welcomes letters to the editor and appropriate guest columns. All copy submitted should be 350 words or fewer, typed, and sent via e-mail in Microsoft Word format to gaeditor@georgiasouthern.edu. All submissions must be signed and include phone number for verification. GS students should include their academic major, year and hometown. The editors reserve the right to reject any submission and edit submissions for length.

Opinions expressed herein are those of the Board of Opinions or columnists themselves and DO NOT necessarily reflect those of the faculty, staff or administration of GS, the Student Media Advisory Board, The George-Anne Media Group or the University System of Georgia.

JUWAN SMITH RESIGNS AS SGA PRESIDENT

BY ASHTON CHRISTIANSON
The George-Anne staff

STATESBORO — Georgia Southern University's Student Government Association's President Juwan Smith resigned.

SGA had their first meeting of the semester Wednesday, announcing big changes in the administration. With Smith resigning, a new vote will be cast among the Senate body for president, the candidates being the two executive vice presidents of the Statesboro and Armstrong campuses.

Kahria Hadley, junior marketing and economics major, and Spencer DeMink, junior political science major, are the executive vice presidents of the Statesboro and Armstrong campuses respectively.

The candidates will need to have a two-thirds majority vote to win the election from the Senate body from each campus. It has yet to be announced when the votes will be held.

The George-Anne has reached out to Smith for comment.

OTHER BUSINESS

Hadley proposed to hold an open forum with lawyers to explain legal reasons behind the actions taken by the university after recent events like the book burning incident.

"About our book burning and racial situation on campus and all the blame and

problems we've been having ... I really wanted to run [it] by you guys about bringing in other people from the outside," Hadley said.

Hadley wants to bring in Maura Copeland, GS associate vice president for legal affairs, and lawyer Laura Marsh. Her intention is to hold an open forum for all to attend with other student organizations.

"Change the atmosphere on campus instead of just blaming one person would be a good idea," Hadley said.

Graduate Student Organization President Marklem Hernandez, a graduate student in the Master of Education in Higher Education Administration program, proposed that SGAmakes an official position for the GSO president in their administration.



LAUREN SABIA /staff

GA BRIEFS

WOMEN IN TECHNOLOGY TO HOST FIRST GS HACKATHON

BY ALEXIS HAMPTON

The George-Anne staff

STATESBORO — Women in Technology is hosting Georgia Southern's first Hackathon, Southern Hacks, in February.

The event will be 24 hours from Feb. 28 to 29, allowing students who register to tackle challenging problems using technology, such as creating websites, hardware and more.

"The goal is to form a team with a solution in mind and to solve a problem with that solution," said Shelby Cuaron, SouthernHacks' Lead Organizer.

Lead Organizer.

Sponsored by State Farm, Republic National Distributing Company and more, this event will be open to all Georgia students, but GS students will receive special privileges.

"At the end of the event and creating a solution all night long, students will then present on their solution and be judged by professionals in the field." Cuaron said. "Registered students can win prizes based upon their submitted creations."

SEARCH FOR ASSOCIATE VP FOR INCLUSIVE EXCELLENCE NARROWED DOWN TO THREE

BY ASHTON CHRISTIANSON

The George-Anne staff

STATESBORO — Georgia Southern University's search for an associate vice president for inclusive excellence has been narrowed down to three final candidates who have been holding open forums on the Statesboro and Armstrong campuses.

Forums for TuJuan Wilson, whose resume includes a special assistant, external relations and associate vice president of diversity, equity and inclusion at the University of Iowa, have already passed. Here are the remaining forums:

Jan. 23: Jobi Martinez

Candidate Jobi Martinez's Statesboro visit was Jan. 22. She will be at the Armstrong campus on Jan. 23 in the Armstrong

Center Auditorium from 2:30 p.m. to 3:30 p.m, according to GS Communications and Marketing.

According to Martinez's resume, she is a visiting special assistant to the president at the University of Houston - Downtown. She has consulted on diversity and inclusion in higher education since 2015.

Jan. 23 and 24: Karen Jones

Candidate Karen Jones will be at the Statesboro campus on Jan. 23 in the Russell Union theater from 4 p.m. to 5 p.m. Jones will be at the Armstrong campus on Jan. 24 in the Armstrong Center Auditorium from 3 p.m. to 4 p.m, according to GS Communications and Marketing.

According to Jones' resume, she has been the chief diversity officer at Buffalo State College since 2012.

The Widow Maker Collective brings a dream to Georgia Southern

BY DAVIS COBB

The George-Anne staff

STATESBORO — Georgia Southern University's Center for Art and Theatre is currently holding an exhibition for multimedia art group The Widow Maker Collective.

"Bedtime Stories" has been on display since Jan. 13 and is the latest collection of the group's unique art style. An artist talk and reception was held on Jan. 16 to celebrate the exhibit.

A Savannah-based studio, the Collective consists of artists Will Penny, Michael Porten and Britt Spencer, who collaborate on a variety of works that merges traditional art with modern media technology to examine the value of material objects in a world steadily becoming more and more virtual, according to a press release.

The artists have made a name for themselves both as a group and on their own, with their individual works being featured at the Mercedes-Benz Stadium

and being used as cover art for the Saturday Evening Post and Newsweek.

As a group, they are famous for their installation "Pollinate" at Boston's Art and Technology Festival Hubweek in Oct. 2017 and brought over 50 thousand visitors to the event.

"The Widow Maker Collective is among the most dynamic and exciting groups of artists not only in the southeast, but along the east coast," Jason Hoelscher, gallery director of the Betty Foy Sanders

Department of Art, said in a press release. "I've worked with all three artists individually and as a group on-and-off for years now, and their ability to transform any idea or material, from the unusual to the mundane, never ceases to amaze me. Their show, 'Bedtime Stories', is sure to be one of the state's must-see exhibitions for 2020."

"Bedtime Stories" will be on display at the GS Center for Art and Theatre on the Statesboro campus until Feb. 7.



LAUREN SABIA /staff

SPOTTED AT THE MLK DAY PARADE

Bulloch County holds annual parade honoring Martin Luther King Jr.



BY BLAKELEY BARTEE
The George-Anne staff

STATESBORO — Several groups from Bulloch County took part in the annual Martin Luther King, Jr. Observance Day Parade in Downtown Statesboro Monday afternoon.

Representatives from Georgia Southern University, local schools and churches, the Bulloch Blues Marching Band and more gathered for the procession through North Main Street and ending at Luetta Moore Park.

A group from Georgia Southern University marched in the parade.

BLAKELEY BARTEE/staff



One parade float showed photographs of historical and current leaders.

BLAKELEY BARTEE/staff



The Bulloch Blues Marching Band performed at the parade.

BLAKELEY BARTEE/staff



These parade participants held signs with inspirational quotes.

BLAKELEY BARTEE/staff



One float portrayed a boxing ring with "Justice" and "Equality" on its posts.

BLAKELEY BARTEE/staff

Music program gets down to business at Georgia Southern



A new music industry degree is awaiting approval.

DAVIS COBB/staff

BY DAVIS COBB
The George-Anne staff

SAVANNAH — Georgia Southern University has announced plans to add a new music industry degree under the College of Arts and Humanities. The program will put more focus on music technology and business, with the hope that it will appeal to more students and open a wider path of careers.

"The new program will allow us to connect with a whole new group of potential students," Steven Harper, chair of the department of music, said. "We have been getting inquiries about a music industry degree for years, but have never before had the resources to make it happen."

Accompanying this new field will be several new courses to

help develop this path, including Introduction to Music Industry, Live Sound Reinforcement and Commercial Music Theory.

Harper has stated that the program is not vocational; it is still being proposed under the Bachelor of Arts in Music and only improves on what current music technology and management courses have already built.

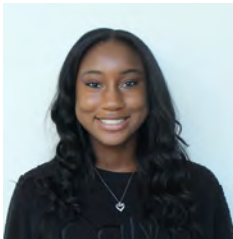
Though the degree is open to students of every GS campus, it is only fully available on the Armstrong Campus. Many of its required courses are also available on any campus, though some will be exclusive to Armstrong.

The program is currently awaiting approval from GS and the National Association of Schools of Music. News on the approval status is expected to be released in June.

MEET THE STAFF



SARAH SMITH
News Managing Editor



AMANDA ARNOLD
Sports Managing Editor



ALEXIS HAMPTON
News Editor



ELIJAH JACKSON
Sports Editor



NOELLE WALKER
The George-Anne Reflector Editor-in-Chief | magseditor@georgiasouthern.edu



AUBREY BRUMBLOW
Reflector Managing Editor



SAVANNAH SAVAGE-JOHNSON
Culture Editor



BLAKELEY BARTEE
The George-Anne Editor-in-Chief | gaeditor@georgiasouthern.edu



ANTHONY BELINFANTE
G-A Reporter



GABRIELLE DIETERICH
G-A Reporter

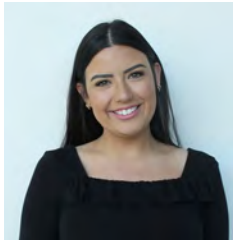
THE GEORGE-ANNE REFLECTOR



ABBY FULLER
G-A Reporter



NATHAN LUFT
Miscellany Editor



SAVANNAH KING
Events/Engagement Editor



JENNA WILEY
Campus Editor



KAYLA WINSTON-BASS
Reflector Reporter



TYLER MILLER
G-A Reporter



MITCH SMITH
G-A Reporter



ASHTON CHRISTIANSON
G-A Reporter



DAVIS COBB
G-A Reporter



OLIVIA CRAFT
Reflector Reporter



TATIANA JOSEPH
Reflector Reporter



REBECCA HOOPER
The George-Anne Creative Editor-in-Chief | prodmgr@georgiasouthern.edu



CLAYTON FRANKLIN
Studio Reporter



BRANDON SCHULTZ
Studio Reporter



TAVION BONNER
Russell Union Host



BEN BARKS
Studio Managing Editor

THE GEORGE-ANNE CREATIVE



JARED PULS
Studio Reporter



REIGN MOUNT
Studio Reporter



LAWRENCE ALGEE
The George-Anne Studio Editor-in-Chief | thecircle@georgiasouthern.edu



MORGAN CARR
Creative Managing Editor



AMINATTA MBOW
Magazine Design Editor



KAYLA HILL
Project Design Editor



ISIS MAYFIELD
Photo Editor

THE GEORGE-ANNE STUDIO



CHRISTAJE ROACH
Senior Project/Digital Designer



DALIS WORRELL
Senior Project/Digital Designer



DANIEL CASTRO
G-A Section Designer



EMILIE POWELL
G-A Section Designer



COY KIRKLAND
The GAMG Business Manager | ads1@georgiasouthern.edu



FAITH BOOKER
Alumni/Staff Relations Coordinator



JASMINE COYE
Events Coordinator



LAURYN TERRY
G-A Section Designer



MADISON TERRY
G-A Section Designer



PARDISS MOAZZAM
Project/Digital Designer



AUSTIN WILLIAMS
Project/Digital Designer



MIKAH GILLESPIE
Recruitment/Faculty



ALEXIS DAYE FREEMAN
The GAMG PR/Marketing Manager | smmarketing@georgiasouthern.edu



CIERRA HORTON
Project/Digital Designer



KRISTEN BALLARD
Photojournalist



LAUREN SABIA
Photojournalist



AMIRA BRUN
Outreach/RU Coordinator

THE GEORGE-ANNE BUSINESS



TAMARA TANKSLEY
Photojournalist



SHAUN BOYCE
Photojournalist



DOREEN FOSCO
Photojournalist



PLAYERS TO WATCH

GEORGIA SOUTHERN UNIVERSITY



ISAIAH CRAWLEY #53



ALEXIS BROWN #4



IKE SMITH #3



AMIRA ATWATER #15



QUAN JACKSON #13



TATUM BARBER #23

PLAYERS TO WATCH

GEORGIA STATE UNIVERSITY



BY AMANDA ARNOLD AND
ELIJAH JACKSON
The George-Anne staff

The Georgia Southern V.S. Georgia State game is always a game to watch but this year is a little different as both teams are at the bottom of the Sun Belt conference. It

will likely be a gritty, tough-nosed matchup, as both teams come in looking for their . The rivalry between the two teams is personal this season, as the Eagles haven’t beaten the Panthers in over four years. Here are the three Panthers to watch for the upcoming matchup.

TAYLOR HOSENDOVE, #11

Sophomore guard Taylor Hosendove has been an offensive force and a monster on the glass for the Panthers all season long. She leads the team in scoring with 11.8 points per game and 9.3 rebounds per game. She ranks 16th in the conference in scoring and second in the conference in rebounding. She is also ranked 10th in the conference in field goal percentage.



PHOTO: RICH VON RIBERSTEIN

Rank 16th in the conference in scoring



PHOTO: DANIEL WILSON

15 points per game average

COREY ALLEN (11)

Redshirt-junior guard Corey Allen has started all twenty games and leads the team with about 15 points per game. He ranks ninth in the conference in scoring, ninth in field goal percentage and fourth in three-pointers made.

TAYLOR HENDERSON, #32

Freshman guard Taylor Henderson has really been a key player for the Panthers this year as she has started 12 out of 17 of the games this season. She is second on the team in scoring and 21st in the conference with 10.6 points per game.



PHOTO: DALE ZANINE

21st in the conference, 10.6 points per game



PHOTO: MANDELA JONES

13 points per game average.

KANE WILLIAMS (12)

Starting junior guard Kane Williams averages 13 points per game and has been a solid force on offense. He ranks fifteenth in the conference in scoring, second in assists and ninth in steals. In last season’s regular season finale against the Eagles, Williams led the team with 23 points and three steals.

JADA LEWIS, #13

Redshirt junior guard Jada Lewis has started every game for the Panthers, having scored double digits points in eight of the 17 games that have been played so far this season. She is the third leading scorer for the Panthers with 10.3 points per game. In the last game against the Eagles she scored 20 points while shooting 4-8 from three.



PHOTO: JASON GETZ

Third leading scorer for the Panthers



PHOTO: MANDELA JONES

Only missed eight free throws the entire season

JUSTIN ROBERTS (2)

Redshirt-sophomore guard Justin Roberts averages about 13.6 points per game and leads the team with 36 steals on the season. He has only missed eight free throws the entire season and ranks thirteenth in the conference in scoring.

SOUTHERN VS. STATE

Women’s basketball hopes to break four year drought to rival at home



ISIS MAYFIELD/staff

The Georgia Southern women's basketball team is preparing to take on Georgia State at home.

BY ELIJAH JACKSON
The George-Anne staff

The Georgia Southern women’s basketball team will take on the Georgia State Panthers in a highly anticipated conference game Saturday afternoon.

The Eagles are currently 5-12 overall and 2-4 in conference play, while the Panthers are 4-13 and 1-5 in conference play.

The Eagles have gone 0-4 in the last four games with losses at home to Troy and South Alabama and losses away from Hanner against Little Rock and Arkansas State.

Similarly, the Panthers in their last four games have gone 0-4 with losses at home to Troy and South Alabama and losses away from home against Little Rock and Arkansas State.

This game is crucial for the Eagles as they had lost both matchups to the Panthers last season and haven’t beaten them since January 19, 2016, when they won 61-50.

The Eagles are led by senior guard Alexis Brown, who averages 11.2 points per game and grabs 4.2 rebounds per game while shooting 36 percent from the 3-point range. Brown has been in and out of the starting lineup since she became a part of the GS 1,000 points club back in December in a 70-57 win over Wofford.

The Panthers are led by sophomore guard Taylor Hosendove who averages 11.8 points per game and grabs 9.3 rebounds per game while shooting 46 percent from the field.

The Eagles come into the game struggling as a team from 3-point range as they’ve shot about 26 percent from beyond the arc.

The Panthers also come into the game with the same 3-point struggles as they’ve shot about 23% as a team.

The Eagles will also look to stop their turnover problems that have plagued them most of the season where they’ve had over 15 turnovers in 13 out of 17 games.

Tip off is set for 2 p.m. Saturday in Hanner Fieldhouse.



ISIS MAYFIELD/staff

Men’s basketball fights through injury woes as they prepare to take on Georgia State



ISIS MAYFIELD/staff

The Georgia Southern men's basketball team is tied with Georgia State for second place in the conference.

BY AMANDA ARNOLD
The George-Anne staff

For the Georgia Southern men’s basketball team, Saturday’s home game against rival Georgia State is more than just the biggest home game of the year. It’s about getting revenge on the team that won the conference last season who would go on to the NCAA Tournament. It’s about beating the team that defeated them twice last season.

The game is crucial to both teams, as both sides hold a 6-3 conference record. They are tied for second place in the East behind Little Rock.

“I feel like we’re still a work in progress and we’re not where we need to be,” Head Coach Mark Byington said. “Hopefully we’re one of those teams that has a great last week in January and pushes through February and I think we have the potential to do that.”

The last time redshirt-guard Ike Smith played the Panthers was in 2018. He scored 16 points in the game and the loss was heartbreaking. It was the conference semi-final game in New Orleans and the Eagles were fighting for a title. They fell short and it was surely a fight to remember.

Both GS and GSU went 1-1 in last weekend’s pair of conference

games in Alabama and hope to break this streak and earn a victory point in the rivalry series.

GS has been averaging around 76 points a game and are led by Smith and sophomore guard Elijah McCadden. The lineup has seen frequent changes this season due to injury and consistency has been an ongoing issue.

“We’ve had a number of guys get hurt and miss games,” Byington said. “Isaiah Crawley, I think, is one of the best players in this league and he missed four games. We’ve had three games this year where we’ve only seven scholarship players available... As soon as we start getting some momentum, some different things happen.”

Georgia State holds a 13-6 record against GS in the past 19 meetings, but GS has a 27-6 record at home.

The game is expected to be packed and students are advised to arrive early for the 2 p.m. women’s game prior to men’s tip-off around approximately 5 p.m. Doors will open at 1 p.m. and the arena will not be cleared out before the men’s game.

Morris Bank is sponsoring the “white out” and once capacity is reached, the fire marshal will close the doors for good. No re-entry will be allowed.

V	B	E	F	O	R	E	U	S	E	D	H	O	U	R	R	S	E
P	I	A	R	L	O	U	D	T	H	A	T	A	T	C	E	A	C
M	O	E	O	P	O	N	W	I	T	H	E	A	T	S	L	Q	R
L	E	I	W	D	E	W	E	R	E	O	A	N	L	H	A	U	A
B	U	R	N	S	O	A	E	J	U	L	Y	P	T	I	Y	I	B
I	D	L	E	T	N	R	K	R	U	N	S	S	P	E	K	T	D
G	A	O	D	A	E	M	E	S	S	D	N	X	A	Y	R	E	A
G	T	Y	O	Y	O	R	F	L	O	O	D	U	G	U	E	S	T
E	E	V	E	N	P	C	P	R	I	N	T	S	E	V	P	H	K
R	S	R	I	E	E	O	O	T	S	K	O	E	S	E	R	I	N
M	A	A	E	F	R	N	A	P	H	E	R	S	N	T	O	R	E
M	G	P	S	C	A	R	D	T	Y	Y	A	A	E	O	D	I	L
D	I	R	T	R	T	N	I	I	M	P	O	S	T	S	U	N	T
P	U	O	R	S	I	P	C	D	N	E	V	E	R	S	C	G	H
O	F	N	U	V	O	B	E	Y	G	G	E	Y	E	S	T	S	H
L	I	L	C	A	N	G	S	L	L	E	R	T	A	S	I	T	E
E	L	I	K	S	D	U	C	K	S	A	S	E	F	R	O	M	L
I	M	A	G	E	B	C	O	N	V	E	N	T	I	O	N	A	L

- ALIKE

APRON

BEER

BEFORE

BIGGER

BURNS

BUSY

CLUB

CONVENTIONAL

COPY

CRAB

CROP

DATES

DIRT

DONKEY

DUCKS

EDGE

ELSE

ENDING

ENDS

ENOUGH

ENTERS

EVEN

EYES

FANCY

FILM

FLOOD

FLOWERS

FROM

FROWNED

GAIN

GUEST

HAPPY
- HATH

HEATS

HELL

HERS

HIRING

HOOR

HYMN

ICES

IDLE

ILLUSTRATIONS

IMAGE

IRISH

JULY

KNELT

LOAF

LOUD

MARE

MEET

MERE

NEVER

NOSES

OBEY

ODOR

OPERATION

OURS

PAGES

PASS

PEAKS

PEEP

PIPE

POINTER

POLE

POSTS
- PRINTS

QUITE

RATS

RELAY

REPRODUCTION

RIBS

RIDGES

RODS

RAMS

SAID

SCAR

SEAS

SEND

SITE

STAY

STIR

STRUCK

THAT

TIDY

TOES

TORE

TOYS

USED

USES

VARY

VASE

VETO

VIEWS

WARM

WEEK

WERE

YARN

YO-YO

Across

- 1

Leer at
- 5

Baby doll word
- 9

Took a chair
- 12

Perch
- 14

Poetic nightfalls
- 15

Bantu language
- 16

Borneo locale
- 18

Black
- 19

Scream and shout
- 20

Clavicle, e.g.
- 21

Macaw
- 23

Wager
- 24

Feathered’s pal
- 26

Bergen’s dummy, Mortimer ____
- 28

Conifer
- 30

Father
- 31

Sanctioned
- 33

Aria
- 35

Author Fleming
- 38

Then (Ger.)
- 39

Dry, as wine
- 41

Triumphed
- 42

Gun org.
- 43

Human foot
- 44

Trudge
- 46

Spousal no-no
- 48

Japanese capital
- 50

Social drink
- 52

Repletes
- 53

ET items
- 56

Duffers’ org.
- 58

Conducted
- 59

Eyeballs
- 60

Chewy candy
- 63

Stride
- 64

Mountains, e.g.
- 68

Fr. seasons
- 69

Snout
- 70

coast range
- 71

Thing, in law

1	2	3	4		5	6	7	8		9	10	11	
12				13		14				15			
16					17					18			
			19							20			
	21	22			23				24	25			
26				27		28		29		30			
31					32		33		34		35	36	37
38				39		40		41			42		
43				44		45		46		47			
		48	49			50		51		52			
53	54				55		56		57		58		
59					60	61			62				
63					64					65	66	67	
68					69				70				
71					72					73			

Copyright ©2020 PuzzleJunction.com

- 72

Tender Mercies

actress Harper
- 73

Turnstile
- 11

Adjusted, like a radio
- 13

Sesame
- 15

Zoo denizen
- 17

Kernel
- 21

Leg joint
- 22

Puts together again
- 25

Demigod
- 26

Cleanser
- 27

Tyrant
- 29

Word of admiration
- 32

Eastern state (Abbr.)
- 34

Tennis shot
- 36

ed
- 37

Some votes
- 40

Small bed
- 45

Dismay
- 47

Nettlesome
- 49

Secretaries
- 51

Desert plants
- 53

Grovel
- 54

Bloviate
- 55

Fragrance
- 57

Doc bloc (Abbr.)
- 61

Burn plant
- 62

Greek letter
- 65

Harem quarters
- 66

After hair or gill
- 67

Compass pt.

Down

- 1

Pay dirt
- 2

State of south-western India
- 3

____ Gatos, CA
- 4

River inlet
- 5

Potpourri
- 6

Takes to the sky
- 7

Encounter
- 8

Strong point
- 9

Underling
- 10

Solitary

Level: Medium

8								2
4			7	8	5			
6			9		1		4	
	5	9				7	3	
3								5
	6	2				9	8	
	4		5		9			8
			4	1	8			6
9								7

Level: Difficult

					2			
8	2	5					4	
7			5	8	3			
	8	2	6			5		1
6		1			4	9	8	
			1	9	6			4
	7					6	2	9
			8					

JOIN OUR CAST AT

G • A • M • G

THE GEORGE-ANNE MEDIA GROUP



We have journalism, marketing, photography,
design, videography, and advertising opportunities.

Apply online at
thegeorgeanne.com



Scan here to apply!

JOIN OUR CAST AT

the george-anne
media group



We have journalism, marketing, photography,
design, videography, and advertising opportunities.

Apply online at
thegeorgeanne.com