

Bulgarian Scientific and  
Technical Union of Civil Engineering

Federation of the Bulgarian Technical Unions

Bulgarian Building and  
Construction Chamber

Chamber of Engineers in  
the Investment Design

Varna Free University "Chernorizets Hrabar"

Foundation "Evrika"

# International Conference

on Civil  
Engineering  
Design  
and Construction  
(Theory and Practice  
for a Sustainable Future)

Official media partner "Stroitel" newspaper

With the support of



GLAVBOLGARSTROY  
HOLDING AD

20 – 22 September 2018

Varna Free University  
"Chernorizets Hrabar",

Varna, Bulgaria



Научно-технически съюз по строителство в България

Международна научна конференция  
Проектиране и строителство на сгради и съоръжения

Сборник с доклади на X Юбилейна международна научна конференция  
„Теория и практика за устойчиво бъдеще“

Редактори: Ячко П. Иванов, Венцеслав Ал. Стоянов

Предпечатна подготовка: Венцеслав Ал. Стоянов

ISSN: 2603-4255

Българска, първо издание

София, 2018

**СЪДЪРЖАНИЕ / CONTENTS****ПЛЕНАРНИ ДОКЛАДИ / PLENARY LECTURES**

<i>Иди Р., Малколмсон Р.</i> ПОЛИТИКИ И УСТОЙЧИВОСТ НА ДОБИВА НА ГРАУВАКИ ОТ КАРИЕРИ В СЕВЕРНА ИРЛАНДИЯ <i>Eadie R., Malkolmson R.</i> POLICIES AND SUSTAINABILITY IN GREYWACKE QUARRIES IN NORTHERN IRELAND	19
<i>19Иванов Я., Ангелиева В.</i> УСТОЙЧИВО СТРОИТЕЛСТВО - ИЗИСКВАНИЯ И ПРИНОС ЗА ОПАЗВАНЕ НА ОКОЛНАТА СРЕДА И ЗА УСТОЙЧИВОТО РАЗВИТИЕ <i>Ivanov Y., Angelieva V.</i> SUSTAINABLE CONSTRUCTION - REQUIREMENTS AND CONTRIBUTION FOR THE PROTECTION OF NATURE AND FOR THE SUSTAINABLE DEVELOPMENT	29
<i>Радонянин В., Ковачевич Д., Малешев М., Ладинович Дж.</i> ПРОБНО НАТОВАРВАНЕ И МОНИТОРИНГ НА ЖЕЛЕЗОПЪТНИЯ МОСТ НАД РЕКА ДУНАВ В НОВИ САД <i>Radonjanin V., Kovačević D., Malešev M., Lađinović Đ.</i> LOAD TEST AND MONITORING OF RAILWAY-ROAD BRIDGE OVER DANUBE IN NOVI SAD	39
<i>Сердар Н., Фолич Р.</i> СЕИЗМИЧЕН ВЕРОЯТНОСТЕН АНАЛИЗ НА ХОРИЗОНТАЛНО ИЗВИТИ И НАКЛОНЕНИ СТОМАНОБЕТОННИ МОСТОВЕ <i>Serdar N., Folić R.</i> SEISMIC PROBABILITY ANALYSIS OF CURVED AND SKEWED REINFORCED CONCRETE BRIDGES	50
<i>Сурампали Р.</i> УСТОЙЧИВО УПРАВЛЕНИЕ НА ИНФРАСТРУКТУРАТА: ВЪЗСТАНОВЯВАНЕ НА РЕСУРСИТЕ И ПОВТОРНО ИЗПОЛЗВАНЕ В ДЕПАТА <i>Surampalli R.</i> SUSTAINABLE INFRASTRUCTURE MANAGEMENT: RESOURCE RECOVERY AND REUSE IN LANDFILLS	65

**СЕКЦИЯ 1: НОВИ МАТЕРИАЛИ И ТЕХНОЛОГИИ В СТРОИТЕЛСТВОТО ЗА УСТОЙЧИВО БЪДЕЩЕ. ЗАКОНОДАТЕЛСТВО И НОРМАТИВНА БАЗА В ОБЛАСТТА НА СТРОИТЕЛСТВОТО. УПРАВЛЕНИЕ НА РИСКА И УСТОЙЧИВО РАЗВИТИЕ. ТЕХНИКА НА БЕЗОПАСНОСТТА НА ТРУДА И ПРОТИВОПОЖАРНА ТЕХНИКА.**

**SECTION 1: NEW BUILDING MATERIALS AND TECHNOLOGIES FOR SUSTAINABLE FUTURE. LEGISLATION AND REGULATIONS IN CONSTRUCTION SECTOR. RISK MANAGEMENT AND SUSTAINABLE DEVELOPMENT. LABOUR SAFETY TECHNIQUES AND FIRE-FIGHTING EQUIPMENT.**

*Абиона О., Омокунгбе О., Агбеде О.*

ЕФЕКТ НА ПЛАСТМАСОВИТЕ МАТЕРИАЛИ ВЪРХУ ГЕОТЕХНИЧЕСКИТЕ СВОЙСТВА НА ПОЧВА ЗА ИНЖЕНЕРНИ СЪОРЪЖЕНИЯ

67

*Abiona O., Otokungbe O., Agbede O.*

EFFECT OF PLASTIC MATERIALS ON GEO-TECHNICAL PROPERTIES OF SOIL FOR ENGINEERING CONSTRUCTION

*Адем Н., Кичекова М., Димитров Д.*

БЕЗОПАСНОСТ ПРИ РАБОТА НА СОЛАРНИ КОЛЕКТОРИ ЗА ОТОПЛИТЕЛНИ СИСТЕМИ ЗА ТОПЛА ВОДА

68

*Adem N., Kichekova M., Dimitrov D.*

OPERATIONAL SAFETY OF SOLAR COLLECTORS FOR HEATING SYSTEMS FOR HOT WATER

*Атич М.*

УПРАВЛЕНИЕТО НА БЪЛГАРСКИТЕ ДИПЛОМАТИЧЕСКИ ИМОТИ ИЗВЪН НАШАТА СТРАНА – В СЪОТВЕТСТВИЕ С ПРИНЦИПИТЕ ЗА УПРАВЛЕНИЕ НА ПОРТФЕЙЛ ОТ НЕДВИЖИМОСТИ

76

*Atich M.*

THE MANAGEMENT OF BULGARIAN DIPLOMATIC REAL ESTATE OUTSIDE OUR COUNTRY – IN ACCORDANCE WITH THE PRINCIPLES OF MANAGING A REAL ESTATE PORTFOLIO

*Бонев Б., Стойнова А., Шопов А.*

ИЗПОЛЗВАНЕ НА ТЕРМОГРАФИЯТА ЗА ОПРЕДЕЛЯНЕ НА КОРОЗИЯТА В АРМИРОВКАТА

86

*Bonev B., Stoynova A., Shopov A.*

USING THE THERMOGRAPHY FOR DETERMINING CORROSION IN REINFORCEMENT STEEL

*Даковски Ц., Каменова И.*

ПЕРСПЕКТИВИ ЗА РАЗВИТИЕТО НА СЕГМЕНТА НА ОФИС-СГРАДИТЕ, КАТО ЕДНА БЪРЗО РАЗВИВАЩА СЕ СЪСТАВНА ЧАСТ НА СТРОИТЕЛНИЯ СЕКТОР ОТ НАЦИОНАЛНОТО СТОПАНСТВО НА РЕПУБЛИКА БЪЛГАРИЯ

87

*Dakovski T., Kamenova I.*

PROSPECTS FOR THE DEVELOPMENT OF THE OFFICE BUILDING SEGMENT AS A FAST-DEVELOPING COMPONENT OF THE CONSTRUCTION SECTOR OF THE NATIONAL ECONOMY OF THE REPUBLIC OF BULGARIA

*Димитрова С.*

КЛАСИФИКАЦИЯ НА ВИДОВЕТЕ ОЛЕКОТЕНИ СТОМАНОБЕТОННИ ПОДОВИ КОНСТРУКЦИИ

95

*Dimitrova S.*

CLASSIFICATION THE TYPES OF LIGHTWEIGHT REINFORCED CONCRETE SLAB STRUCTURES

<i>Димитрова С., Белева К.</i> ТЕХНОЛОГИЯ НА ИЗПЪЛНЕНИЕ НА СЪВРЕМЕННИ ОЛЕКОТЕНИ СТОМАНОБЕТОННИ ПОДОВИ КОНСТРУКЦИИ	101
<i>Dimitrova S., Beleva K.</i> CONSTRUCTION TECHNOLOGY FOR CONTEMPORARY LIGHTWEIGHT REINFORCED CONCRETE SLAB STRUCTURES	
<i>Френкева-Белчева В.</i> ПРЕВЕНЦИЯ НА РИСКА ОТ ПОЖАР В ПТИЦЕВЪДНИ ФЕРМИ	111
<i>Frenkeva-Belcheva V.</i> PREVENTING THE RISK OF FIRE POULTRY FARMS	
<i>Георгиева Г., Паничаров Г.</i> ОПТИМИЗИРАНЕ СТРУКТУРАТА НА СТРОИТЕЛЕН МАТЕРИАЛ, ПРОИЗВЕДЕН ОТ МИНЕРАЛИ НА ЧЕРНОМОРСКИЯ БАСЕЙН	116
<i>Georgieva G., Panicharov G.</i> OPTIMIZATION THE STRUCTURE OF BUILDING MATERIAL, PRODUCED FROM MINERALS OF THE BLACK SEA BASIN	
<i>Гюлеметова М.</i> МОДЕЛ ЗА ОБРАЗОВАНИЕ В ЕКОЛОГИЧНА СИГУРНОСТ И УСТОЙЧИВО РАЗВИТИЕ НА ПРИМЕРА НА РОЛЕВИ СИТУАЦИИ	119
<i>Gyulemetova M.</i> A MODEL FOR EDUCATION IN ENVIRONMENTAL SECURITY AND SUSTAINABLE DEVELOPMENT OF THE ROLE MODEL	
<i>Хаджийски Б.</i> КОНТРОЛНАТА ДЕЙНОСТ НА ДИРЕКЦИЯ ЗА НАЦИОНАЛЕН СТРОИТЕЛЕН КОНТРОЛ ПО ОТНОШЕНИЕ НА ИЗПЪЛНЕНИЕТО НА ПЛАНА ЗА БЕЗОПАСНОСТ И ЗДРАВЕ – ВАЖНА ПРЕДПОСТАВКА ЗА НАМАЛЯВАНЕ НА ТРАВМАТИЗМА НА РАБОТНАТА СИЛА В СТРОИТЕЛСТВОТО	126
<i>Hadghiyski B.</i> THE CONTROL WORK OF THE NATIONAL CONSTRUCTION CONTROL DEPARTMENT REGARDING THE IMPLEMENTATION OF THE SAFETY AND HEALTH PLAN – AN IMPORTANT PREREQUISITE FOR THE REDUCTION OF WORKFORCE TRAM IN CONSTRUCTION	
<i>Хрисчев Л., Динев Д., Тепелиев В.</i> ТИПИЧНИ КОНФИГУРАЦИИ И КОМПОЗИЦИОННИ СХЕМИ ПРИ ИЗПЪЛНЕНИЕТО НА ФАСАДНИ СКЕЛЕТА	136
<i>Hrishev L., Dinev D., Tepeliev V.</i> TYPICAL CONFIGURATIONS AND COMPOSITION SCHEMES FOR FAÇADE SCAFFOLDING	
<i>Икпонтваса Е., Адетукаси О.</i> ВЛИЯНИЕ НА РАЗЛИЧНИТЕ ТЕМПЕРАТУРНИ РЕЖИМИ ВЪРХУ ЯКОСТНИТЕ ХАРАКТЕРИСТИКИ НА БЕТОНИ С ЧЕРУПКИ НА ПАЛМОВИ ЯДКИ	146
<i>Ikponmwosa E., Adetukasi O.</i> EFFECT OF VARIABLE TEMPERATURE REGIMES ON STRENGTH CHARACTERISTICS OF PALM KERNEL SHELL CONCRETE	
<i>Икпонтваса Е., Мансарай С., Они О.</i> ВЛИЯНИЕ НА ИЗТОЧНИКА НА ВОДА ВЪРХУ НЯКОИ ТЕХНИЧЕСКИ СВОЙСТВА НА БЕТОН (НА ПРИМЕРА НА ГР. ЛАГОС)	156
<i>Ikponmwosa E., Mansaray S., Oni O.</i> EFFECT OF WATER SOURCE ON SOME ENGINEERING PROPERTIES OF CONCRETE (CASE STUDY OF LAGOS METROPOLIS)	

<p><i>Икпонмваса Е., Адетукаси О., Онасаня К.</i>                  СРЯЗВАНЕ ЧРЕЗ ТРИЕНЕ НА БЕТОН, СЪДЪРЖАЩ ШЛАКОВИ ДОБАВЪЧНИ МАТЕРИАЛИ                  КАТО ЕДЪР ДОБАВЪЧЕН МАТЕРИАЛ В УСИЛЕНИ БЕТОНИ</p>	165
<p><i>Икпонмваса Е., Адетукаси О., Онасаня К.</i>                  SHEAR FRICTION OF CONCRETE CONTAINING STEEL SLAG AGGREGATE                  AS COARSE AGGREGATE IN REINFORCED CONCRETE</p>	
<p><i>Иванов Д.</i>                  УЧЕНИ И ЕКСПЕРТИ ЗА НАСЪРЧАВАНЕ НА УСТОЙЧИВОТО РАЗВИТИЕ</p>	175
<p><i>Ivanov D.</i>                  SCIENTISTS AND EXPERTS FOR PROMOTING SUSTAINABLE DEVELOPMENT</p>	
<p><i>Иванов Д.</i>                  ХОЛИСТИЧЕН ПОДХОД НА ГРУПАТА НА ВИСОКО РАВНИЩЕ НА ООН                  ЗА ГЛОБАЛНА УСТОЙЧИВОСТ</p>	181
<p><i>Ivanov D.</i>                  HOLISTIC APPROACH TO THE UN HIGH LEVEL FOR GLOBAL SUSTAINABILITY</p>	
<p><i>Живков В., Натараджан В., Филипов Ф., Мандиев П., Донева С., Танковски Й., Панева А.</i>                  МОДЕРНИ САТЕЛИТНИ СИСТЕМИ                  И УПРАВЛЕНИЕ НА СТРОИТЕЛНИ КОНСТРУКЦИИ</p>	189
<p><i>Jivkov V., Natarajan V., Philipoff P., Mandiev P., Doneva S., Tankovsky J., Paneva A.</i>                  MODERN SATELLITE SYSTEMS                  AND BUILDING STRUCTURES CONTROL</p>	
<p><i>Манолова Е.</i>                  ЗЕЛЕН ЦИМЕНТ И БЕТОН ЗА УСТОЙЧИВИ КОНСТРУКЦИИ</p>	197
<p><i>Manolova E.</i>                  GREEN CEMENT AND CONCRETE FOR SUSTAINABLE STRUCTURES</p>	
<p><i>Миронова М., Господинов П.</i>                  ПУКНАТИНОУСТОЙЧИВОСТ НА ЕЛЕМЕНТИ ОТ ЛЕКИ БЕТОНИ</p>	205
<p><i>Mironova M., Gospodinov P.</i>                  THE CRACK RESISTANCE OF LIGHTWEIGHT CONCRETE ELEMENTS</p>	
<p><i>Найденев В., Ростовски И.</i>                  СРАВНИТЕЛНИ ИЗПИТВАНЯ НА ТОРКРЕТБЕТОНИ, ПРЕДНАЗНАЧЕНИ                  ЗА РЕМОНТНО-ВЪЗСТАНОВИТЕЛНИ РАБОТИ ЧРЕЗ СУХО И МОКРО ПОЛАГАНЕ.                  ЧАСТ I: ФИЗИКО-МЕХАНИЧНИ ХАРАКТЕРИСТИКИ</p>	211
<p><i>Naidenov V., Rostovsky I.</i>                  COMPARATIVE TESTS OF SPRAYED CONCRETE,                  INTENDED FOR REPAIR AND RESTORATION WORKS BY DRY AND WET SPRAYING.                  PART I: PHYSICAL AND MECHANICAL CHARACTERISTICS</p>	
<p><i>Найденев В., Ростовски И.</i>                  СРАВНИТЕЛНИ ИЗПИТВАНЯ НА ТОРКРЕТБЕТОНИ, ПРЕДНАЗНАЧЕНИ                  ЗА РЕМОНТНО-ВЪЗСТАНОВИТЕЛНИ РАБОТИ ЧРЕЗ СУХО И МОКРО ПОЛАГАНЕ.                  ЧАСТ II: СТРУКТУРА И ФАЗОВ СЪСТАВ</p>	221
<p><i>Naidenov V., Rostovsky I.</i>                  COMPARATIVE TESTS OF SPRAYED CONCRETE,                  INTENDED FOR REPAIR AND RESTORATION WORKS BY DRY AND WET SPRAYING.                  PART II: STRUCTURE AND PHASE COMPOSITION</p>	

<p><i>Назърски Д.</i>          ХИДРОИЗОЛАЦИОННИ СИСТЕМИ НА ГРАДСКИ ПЛОЩАДИ,          С НАМИРАЩИ СЕ ПОД ТЯХ ИЗПОЛЗВАЕМИ ПЛОЩИ  <i>Nazarski D.</i>          WATERPROOFING SYSTEMS IN EXISTING CITY SQUARES,          HAVING USABLE AREAS UNDER THEM</p>	230
<p><i>Николов Б.</i>          РАЗХОДИ ЗА ТРУД И МЕХАНИЗАЦИЯ ПРИ ИЗПЪЛНЕНИЕ НА ТРЪБОПРОВОДИ          С УПРАВЛЯЕМО ХОРИЗОНТАЛНО СОНДИРАНЕ  <i>Nikolov B.</i>          STUDY OF LABOUR AND EQUIPMENT COSTS FOR HORIZONTAL DIRECTIONAL DRILLING</p>	235
<p><i>Николов Б.</i>          МЕТОДИ ЗА УСТАНОВЯВАНЕ НА МЕСТОПОЛОЖЕНИЕТО          И ОРИЕНТАЦИЯТА НА СОНДАЖНАТА ГЛАВА  <i>Nikolov B.</i>          HORIZONTAL DIRECTIONAL DRILLING HEAD LOCATING METHODS</p>	244
<p><i>Николова И.</i>          МАРКЕТИНГОВИ ПОДХОДИ ПРИЛОЖИМИ В СТРОИТЕЛНОТО ПРЕДПРИЯТИЕ          ЗА ПОДОБРЯВАНЕ НА НЕГОВАТА КОНКУРЕНТОСПОСОБНОСТ  <i>Nikolova I.</i>          MARKETING STEPS APPLICABLE IN CONSTRUCTION COMPANY          FOR IMPROVING THEIR COMPETITIVENESS</p>	254
<p><i>Николова Г., Янакиева А.</i>          КОЕФИЦИЕНТ НА ИНТЕНЗИВНОСТ НА НАПРЕЖЕНИЯТА И СКОРОСТ          НА ОСВОБОДЕНАТА ЕНЕРГИЯ ПРИ КОМПОЗИТИ ОТ РЕЦИКЛИРАНИ МАТЕРИАЛИ  <i>Nikolova G., Yanakieva A.</i>          STRESS INTENSITY FACTORS AND ENERGY RELEASE RATE          IN COMPOSITES FROM RECYCLED MATERIALS</p>	261
<p><i>Осифала К., Акею Т.</i>          ЕФЕКТ ОТ ПРИЛАГАНЕ НА СМЕС ОТ МАТЕРИАЛИ ЗА ПОКРИТАНЕ          НА АРМИРОВКАТА ВЪРХУ ЕФЕКТИВНОСТТА НА НЕЙНОТО СЦЕПЛЕНИЕ  <i>Osifala K., Akeju T.</i>          EFFECT OF COATING MATERIALS MIXTURE ON BOND EFFICIENCY          OF EPOXY COATED LAPPED SPLICES</p>	262
<p><i>Осифала К., Омокунгбе О., Кутелу О.</i>          СЦЕПЛЕНИЕ МЕЖДУ АРМИРОВКА И БЕТОН, В КОЙТО Е ВЛОЖЕН ЛАТЕРИТ  <i>Osifala K., Omokungbe O., Kutelu O.</i>          BOND CHARACTERISTICS OF LATERIZED CONCRETE</p>	272
<p><i>Пашов Н.</i>          НЯКОИ АСПЕКТИ НА БЕЗОПАСНОСТТА ПРИ ЕКСПЛОАТАЦИЯ НА ПЪТНИ ТУНЕЛИ  <i>Pashov N.</i>          SOME ASPECTS OF SAFETY IN THE EXPLOITATION OF ROAD TUNNELS</p>	282
<p><i>Петкова-Слипец Р., Терзи С.</i>          АВТОКЛАВНИЯТ ГАЗОБЕТОН БЕТОН И ПРИЛОЖЕНИЕТО МУ          КАТО ЗВУКОИЗОЛАЦИОНЕН МАТЕРИАЛ  <i>Petkova-Slipets R., Terzi S.</i>          AUTOCALVED CONCRETE AND ITS APPLICATION          AS SOUND INSULATION MATERIAL</p>	291

*Петров П.*

ПРИЛОЖЕНИЕ НА ПРЕСОВАНИ ЗЕМНИ БЛОКОВЕ В СТРОИТЕЛСТВОТО НА СГРАДИ –  
ПРОУЧВАНЕ НА ПРИМЕРИ ОТ АФРИКА И БЪЛГАРИЯ 297

*Petrov P.*

APPLICATION OF PRESSED EARTH MODULAR BLOCKS IN BUILDING CONSTRUCTION –  
STUDY OF EXAMPLES FROM AFRICA AND BULGARIA

*Севме Й., Кичекова М., Димитров Д.*

БЕЗОПАСНОСТ ПРИ АВТОМАТИЗИРАНО УПРАВЛЕНИЕ НА ПРОЦЕСИТЕ  
ЗА ЕНЕРГИЙНА ЕФЕКТИВНОСТ В УНИВЕРСИТЕТСКА СГРАДА 298

*Sevme Y., Kichekova M., Dimitrov D.*

SAFETY IN THE AUTOMATED MANAGEMENT  
OF THE ENERGY EFFICENCY PROCESSES IN THE UNIVERSITY BUILDING

*Стоянов В., Петкова В. Андонова В.*

АНАЛИЗ НА НОРМАТИВНИТЕ ДОКУМЕНТИ И ПРОГРАМИТЕ  
ЗА ПРЕДОТВРАТЯВАНЕ ОБРАЗУВАНЕТО НА СТРОИТЕЛНИ ОТПАДЪЦИ В БЪЛГАРИЯ 305

*Stoyanov V., Petkova V., Andonova V.*

ANALYSIS OF NORMATIVE DOCUMENTS AND PROGRAMS  
FOR CONSTRUCTION WASTES PREVENTION IN BULGARIA

*Талйосеф О.*

ШИРОКОМАЩАБНО ПРИНТИРАНЕ В АРХИТЕКТУРАТА:  
МОТИВАЦИЯ И ПРЕДИЗВИКАТЕЛСТВА 316

*Talyosef O.*

LARGE SCALE PRINTING IN ARCHITECTURE:  
MOTIVATION VS CHALLENGES

*Ушев А.*

КОНЦЕПЦИЯ ЗА МОНИТОРИНГ НА ПРОТИВОПОЖАРНИ ВОДОСНАБДИТЕЛНИ СИСТЕМИ 326

*Ushev A.*

CONCEPT FOR MONITORING OF FIRE WATER SUPPLY SYSTEMS

*Владимиров В., Стоянов В.*

ОСОБЕНОСТИ НА ФИЗИКО-МЕХАНИЧНИТЕ СВОЙСТВА НА КОМПОЗИТНИТЕ МАТЕРИАЛИ  
С ПОЛИМЕРНА МАТРИЦА И МЕТОДИ ЗА ТЯХНОТО ПОДОБРЯВАНЕ 333

*Vladimirov V., Stoyanov V.*

FEATURES OF THE PHYSICO-MECHANICAL PROPERTIES OF COMPOSITE MATERIALS  
WITH POLYMER MATRIX AND METHODS FOR THEIR IMPROVEMENT

*Йорданов В.*

ВЪЗМОЖНОСТИ ЗА РИТЕЙЛИНГ НА ТЕРМАЛНИ МИНЕРАЛНИ ВОДНИ КОЛИЧЕСТВА  
ОТ ОТДЕЛЕН ИЗТОЧНИК В ЗАВИСИМОСТ ОТ ВИДА И ХАРАКТЕРА  
НА ПОТРЕБЯВАЩИТЕ ГИ СУБЕКТИ И ТЕХНИТЕ ЦЕЛИ 344

*Yordanov V.*

OPPORTUNITIES FOR RETAILING THERMAL MINERAL WATER QUANTITIES  
FROM AN INDIVIDUAL SOURCE DEPENDING ON THE TYPE AND NATURE  
OF THEIR USER ENTITIES AND THEIR PURPOSE

*Захариева Р., Кънчева Я.*

ОЦЕНКАТА НА ЖИЗНЕНИЯ ЦИКЪЛ НА СТРОИТЕЛНИТЕ ПРОДУКТИ  
КАТО КРИТЕРИЙ ЗА ПРИЛОЖЕНИЕТО ИМ В СТРОИТЕЛСТВОТО 345

*Zaharieva R., Kancheva Y.*

LIFE CYCLE ASSESSMENT – BASED SELECTION OF CONSTRUCTION MATERIALS



**СЕКЦИЯ 2: ПОСТИЖЕНИЯ В КОНСТРУКТИВНОТО ПРОЕКТИРАНЕ И СТРОИТЕЛСТВОТО. ТЕОРЕТИЧНИ И ЕКСПЕРИМЕНТАЛНИ ИЗСЛЕДВАНИЯ В ОБЛАСТТА НА КОНСТРУКЦИИТЕ. ФУНДИРАНЕ НА СГРАДИ И СЪОРЪЖЕНИЯ. ПЪТНО, ЖЕЛЕЗОПЪТНО И МЕТРОСТРОИТЕЛСТВО.**

**SECTION 2: ADVANCES IN STRUCTURAL DESIGN AND CONSTRUCTIONS. THEORETICAL AND EXPERIMENTAL RESEARCHES OF STRUCTURES. FOUNDATIONS OF BUILDINGS AND FACILITIES. CONSTRUCTION OF ROAD, RAIL AND METRO INFRASTRUCTURE.**

*Димитров Й., Михалева Д.*

ГЕОТЕХНИЧЕСКО ЗАЗДРАВЯВАНЕ НА ЗЕМНАТА ОСНОВА НА МЕТРОСТАНЦИЯ 9 НА ТРЕТАТА МЕТРОЛИНИЯ В ГРАД СОФИЯ ПО МЕТОДА „СТРУЙНА ЦИМЕНТАЦИЯ“

354

*Dimitrov Y., Mihaleva D.*

GEOTECHNICAL SOIL STABILIZATION OF METRO STATION 9 OF THE THIRD METRO LINE IN SOFIA BY “JET GROUTING” METHOD

*Димов Д.*

ВЪЗСТАНОВЯВАНЕ НА НАДЕЖДНОСТТА И ДЪЛГОТРАЙНОСТТА НА СТОМАНОБЕТОННИ МОСТОВИ ОПОРИ

362

*Dimov D.*

RECOVERING THE RELIABILITY AND DURABILITY OF REINFORCED CONCRETE BRIDGE’S SUPPORTS

*Дулевски Е.*

ЕФЕКТИВНА ШИРОЧИНА ЗА КЛАСОВЕ СЕЧЕНИЯ 1 И 2 НА КОМБИНИРАНИ ГРЕДИ

371

*Dulevski E.*

EFFECTIVE WIDTH FOR SECTION CLASSES 1 AND 2 FOR COMBINED GIRDERS

*Дулевски Е., Жипонов А.*

ПРОЕКТ НА СТОМАНЕНА ЕСТАКАДА, ЧАСТ ОТ ТРАСЕТО НА ЖЕЛЕЗОПЪТНА МАГИСТРАЛА И АМ “СТРУМА” В УЧАСТЪКА БЛАГОЕВГРАД – КРЕСНА

379

*Dulevski E., Jiponov A.*

DESIGN PROJECT OF STEEL VIADUCT, PART OF THE RAILWAY LINE AND MOTROWAY STRUMA IN THE SECTION BLAGOEVGRAD – KRESNA

*Георгиев А.*

НОВАТА ВЕРСИЯ НА ЕВРОКОД 2 ЗА ПРОЕКТИРАНЕ НА СТОМАНОБЕТОННИ КОНСТРУКЦИИ – ПРИЛОЖНИ АНАЛИЗИ И СРАВНЕНИЯ

385

*Georgiev A.*

THE NEW VERSION OF EUROCODE 2: DESIGN OF CONCRETE STRUCTURES – APPLIED ANALYSES AND COMPARISONS

*Георгиев Л., Иванов С.*

КОНЦЕПЦИИ ЗА УСИЛВАНЕ НА СТОМАНЕНИ ОРТОТРОПНИ ПЪТНИ ПЛОЧИ ЗА МОСТОВЕ

394

*Georgiev L., Ivanov S.*

STRENGTHENING CONCEPTS FOR ORTHOTROPIC STEEL DECKS IN BRIDGES

*Георгиев Л., Иванов С.*

НАДЛЪЖНА ОСИГУРЕНОСТ НА НЕПРЕКЪСНАТИ КОМБИНИРАНИ СТОМАНО-СТОМАНОБЕТОННИ ВРЪХНИ КОНСТРУКЦИИ ЗА ЖП ВИАДУКТИ

404

*Georgiev L., Ivanov S.*

LONGITUDINAL STABILITY OF CONTINUOUS COMPOSITE STEEL-CONCRETE SUPERSTRUCTURES FOR RAILWAY VIADUCTS

<p><i>Хрисчев Л., Матуски В., Хандрулева А.</i>          ТЕХНИЧЕСКИ И ТЕХНОЛОГИЧНИ РЕШЕНИЯ ЗА ИЗПЪЛНЕНИЕ          НА ФАСАДНО СКЕЛЕ С ГОЛЯМА ВИСОЧИНА  <i>Hrischev L., Matuski V., Handruleva A.</i>          TECHNICAL AND TECHNOLOGICAL SOLUTIONS FOR THE EXECUTION          OF HIGH-RISE FACADE SCAFFOLDING</p>	412
<p><i>Иванов Г., Павлов И. Хр.</i>          ТЕХНОЛОГИЧНИ ОСОБЕНОСТИ ПРИ УСИЛВАНЕ НА СТОМАНОБЕТОННИ ПЛОЧИ          ЧРЕЗ ВЪНШНО ПРЕДВАРИТЕЛНО НАПРЯГАНЕ  <i>Ivanov G., Pavlov I. Hr.</i>          TECHNOLOGICAL FEATURES IN STRENGTHENING OF REINFORCED CONCRETE SLABS          BY EXTERNAL PRESRESSING</p>	422
<p><i>Иванов Г., Радлов К., Хрисчев Л.</i>          НЯКОИ ОСОБЕНОСТИ ПРИ ИЗЧИСЛЯВАНЕ НА НАТОВАРВАНИЯТА          СЪЗДАВАНИ ОТ КУЛОКРАН ВЪРХУ ОПОРНАТА КОНСТРУКЦИЯ ПОД НЕГО  <i>Ivanov G., Radlov K., Hrischev L.</i>          SOME FEATURES IN CALCULATING THE LOADING          CREATED BY TOWER CRANE ON THE SUPPORT STRUCTURE BELOW IT</p>	430
<p><i>Иванов Г., Трайкова М.</i>          ЕКСПЕРИМЕНТАЛНА ПОСТАНОВКА ЗА ИЗСЛЕДВАНЕ НА ПОВЕДЕНИЕТО          НА СТОМАНОБЕТОННИ ПЛОЧИ, УСИЛЕНИ С ВЪНШНО НАПРЕГНАТА АРМИРОВКА  <i>Ivanov G., Traykova M.</i>          EXPERIMENTAL SETUP FOR INVESTIGATION OF THE BEHAVIOR OF REINFORCED CONCRETE          SLABS STRENGTHENED WITH EXTERNALLY PRESTRESSED TENDONS</p>	440
<p><i>Жипонов А., Георгиев Л.</i>          ШПУНТОВИ СТЕНИ КАТО ЧАСТ ОТ ДОЛНОТО НА МОСТОВЕ.          ПРАКТИЧЕСКО ПРИЛОЖЕНИЕ В ДАНИЯ  <i>Jiponov A., Georgiev L.</i>          SHEET PILE WALLS AS A PART OF THE SUBSTRUCTURE OF BRIDGES.          PRACTICAL APPLICATION IN DENMARK</p>	449
<p><i>Омокунгбе О., Абиона О., Агбеде О.</i>          ОЦЕНЯВАНЕ НА ЯКОСТНИТЕ СВОЙСТВА НА СРЯЗВАНЕ НА ГЛИНЕСТИ ПОЧВИ В ГР. ЛАГОС          С ИЗПОЛЗВАНЕ НА КОЕФИЦИЕНТА НА КОНСИСТЕНЦИЯ  <i>Otokungbe O., Abiona O., Agbede O.</i>          EVALUATION OF THE SHEAR STRENGTH PROPERTIES OF CLAY SOILS IN LAGOS STATE          USING THEIR LIQUIDITY INDEX</p>	459
<p><i>Партов Д., Пастернак Х., Греков П., Николов Р., Димитрова А.</i>          ОТНОСНО ТЕОРИЯТА НА ОРТОТРОПНАТА СТОМАНЕНА ПЛОЧА,          СЪЗДАДЕНА ОТ ВИЛХЕЛМ КОРНЕЛИУС И НЕЙНОТО ПРИЛОЖЕНИЕ ПРИ АНАЛИЗА          НА ДВА СТОМАНЕНИ МОСТА С ОРТОТРОПНИ ПЪТНИ ПЛАТНА ВЪВ ВАРНА  <i>Partov D., Pasternak H., Grekov P., Nikolov R., Dimitrova A.</i>          ABOUT THE THEORY OF ORTHOTROPIC STEEL PLATE,          ESTABLISHED BY WILHELM CORNELIUS AND ITS APPLICATION          FOR ANALYSIS OF TWO STEEL BRIDGES WITH ORTHOTROPIC DECKS IN VARNA</p>	469

<i>Партов Д., Кънчев В.</i> ИЗСЛЕДВАНЕ ФЕНОМЕНА НА ПЪЛЗЕНЕТО НА БЕТОНА В КОМБИНИРАНА СТОМАНО-СТОМА-НОБЕТОННА ГРЕДА В ПЕРИОД ОТ 100 ГОДИНИ – СРАВНИТЕЛЕН АНАЛИЗ МЕЖДУ ЧИСЛЕНО РЕШЕНИЕ, БАЗИРАНО НА ИНТЕГРАЛНИ УРАВНЕНИЯ НА ВОЛТЕРА И (ААЕМ) МЕТОД НА БАЖАНТ	482
<i>Partov D., Kantchev V.,</i> 100 YEARS CREEP PHENOMENA IN COMPOSITE STEEL-CONCRETE BEAM – OMPARATIVE ANALYSIS BETWEEN NUMERICAL SOLUTION WITH VOLTERRA INTEGRAL EQUATIONS AND (AAEM) METHOD of BAŽANT	
<i>Павлов И.</i> АНАЛИЗ НА ВЕРОЯТНИТЕ ПРИЧИНИ ЗА АВАРИЯТА НА ПЕШЕХОДЕН МОСТ ВЪВ ФЛОРИДА	
<i>Pavlov I.</i> ANALYSIS ON THE PROBABLE CAUSES OF THE FAILURE OF A PEDESTRIAN BRIDGE IN FLORIDA	493
<i>Павлов И., Михалева Д.</i> ИЗСЛЕДВАНЕ НА ЕФЕКТА НА НАПРЕЧНО ОГРАНИЧЕНИЕ НА БЕТОНА В НАТИСКОВАТА ЗОНА НА СТОМАНОБЕТОННИ ГРЕДИ	
<i>Pavlov I., Mihaleva D.</i> STUDY ON THE EFFECT OF TRANSVERSE CONFINEMENT IN THE COMPRESSION ZONE OF REINFORCED CONCRETE BEAMS	501
<i>Шушулов П., Иванов Г., Радлов К., Хрисчев Л.</i> СЪВРЕМЕНЕН ПОДХОД ЗА ОСЪЩЕСТВЯВАНЕ НА ЕФЕКТИВЕН КОНТРОЛ И ИНЖЕНЕРНА ПОДДРЪЖКА НА СЪСТОЯНИЕТО НА МАШИННИЯ ПАРК НА СТРОИТЕЛНА ФИРМА	
<i>Shushulov P., Ivanov G., Radlov K., Hrischev L.</i> MODERN APPROACH FOR EFFECTIVE CONTROL AND ENGINEERING SUPPORT OF THE STATE OF THE MACHINE PARK OF CONSTRUCTION COMPANY	502
<i>Соколова Г.</i> ОСИГУРЯВАНЕ НА СТОМАНОБЕТОННИ КОНСТРУКЦИИ НА СГРАДИ СРЕЩУ ПРОГРЕСИВЕН КОЛАПС	
<i>Sokolova G.</i> PROVISION OF REINFORCED CONCRETE STRUCTURES OF BUILDINGS AGAINST PROGRESSIVE COLLAPSE	512
<i>Велковски С.</i> НЯКОИ АСПЕКТИ НА ВЗАИМОДЕЙСТВИЕТО МЕЖДУ ГЕОПАТОЛОГИЯТА И СТРОИТЕЛСТВОТО НА СГРАДИТЕ	
<i>Velkovski S.</i> SOME ASPECTS OF INTERACTION BETWEEN GEOPATHOLOGY AND THE CONSTRUCTION OF BUILDINGS	522
<i>Витанова М., Джорджиев И.</i> ОЦЕНЯВАНЕ НА МОСТОВЕТЕ НА МАГИСТРАЛИТЕ ЧРЕЗ СТАТИЧНИ И ДИНАМИЧНИ ИЗПИТВАНИЯ .	
<i>Vitanova M., Gjorgjiev I.</i> ASSESSMENT OF HIGHWAY BRIDGES BY STATIC AND DYNAMIC TESTING	529
<i>Здравков Л.</i> МЯСТО НА ПРИЛАГАНЕ НА ТОВАРИТЕ ВЪРХУ ЦИЛИНДРИЧНО ТЯЛО – ВЛИЯЕ ЛИ ТО НА РАЗПРЕДЕЛЕНИЕТО НА НОРМАЛНИТЕ НАПРЕЖЕНИЯ В НЕГО?	
<i>Zdravkov L.</i> PLACE OF LOAD’S APPLICATION ON THE CILYNDRICAL BODY – DOES IT HAVE AN INFLUENCE ON DISTRIBUTION OF NORMAL STRESSES WITHIN IT?	537

**СЕКЦИЯ 3: АРХИТЕКТУРА НА СГРАДИ И СЪОРЪЖЕНИЯ. СЕИЗМИЧНА МЕХАНИКА И СЕИЗМИЧНО ИНЖЕНЕРСТВО. СОФТУЕР ЗА ПРОЕКТИРАНЕ В СТРОИТЕЛСТВОТО. СТРОИТЕЛСТВО НА ХИДРОТЕХНИЧЕСКИ СЪОРЪЖЕНИЯ И ТУНЕЛИ.**

**SECTION 3: ARCHITECTURE OF BUILDINGS AND FACILITIES. SEISMIC MECHANICS AND SEISMIC ENGINEERING. CONSTRUCTION DESIGN SOFTWARE. CONSTRUCTION OF HYDRAULIC STRUCTURES AND TUNNELS.**

<i>Бояджиев Й., Апостолска Р., Нечевска-Цветановска Г., Бояджиева Ю.</i> СЕИЗМИЧНА ОЦЕНКА НА СТОМАНОБЕТОННИ КОНСТРУКЦИИ НА СГРАДИ СЪС ЗИДАНИ ПЪЛНЕЖНИ СТЕНИ	545
<i>Bojadjiev J., Apostolska R., Necevska-Cvetanovska G., Bojadjieva J.</i> SEISMIC ASSESSMENT OF RC BUILDING STRUCTURES WITH MASONRY INFILL WALLS	
<i>Бонева Т.</i> ТРАНСФОРМИРУЕМАТА АРХИТЕКТУРА И НЕЙНОТО ЗНАЧЕНИЕ ПРИ ИЗГРАЖДАНЕТО НА СЪВРЕМЕННИ СПОРТНИ ЗАЛИ И СЪОРЪЖЕНИЯ	555
<i>Boneva T.</i> TRANSFORMABLE ARCHITECTURE AND ITS IMPORTANCE IN BUILDING MODERN SPORTS HALLS AND FACILITIES	
<i>Ениманев И.</i> МОДЕЛИ ЗА ПРЕУСТРОЙСТВО И САНИРАНЕ НА АГРОИНДУСТРИАЛНИ СГРАДИ	565
<i>Enimanev I.</i> MODELS FOR REFRIGERATION AND SANITARY AGROINDUSTRIAL BUILDINGS	
<i>Ениманев И., Ениманев К.</i> УНИФИЦИРАНЕ НА АРХИТЕКТУРНО-КОНСТРУКТИВНИ ЕЛЕМЕНТИ НА МОДУЛНИ АГРОСГРАДИ	570
<i>Enimanev I., Enimanev K.</i> UNIFICATION OF ARCHITECTURAL-CONSTRUCTION ELEMENTS OF MODULAR AGRO BUILDINGS	
<i>Джорджиев И., Петрески Б., Мицов В.</i> КВАЗИ-СТАТИЧНО ИЗПИТВАНЕ НА ВРЪЗКАТА „КОЛОНА-ФУНДАМЕНТ“ НА СЛОБЯЕМА СТОМАНОБЕТОННА ЗАЛА	574
<i>Gjorgjiev I., Petreski B., Micov V.</i> QUASI-STATIC TESTING OF COLUMN-TO-FOUNDATION CONNECTION FOR PREFABRICATED RC HALL	
<i>Джорджиев И., Йекики Г., Журовски А.</i> АНАЛИТИЧНА ПРОВЕРКА НА РЕЗУЛТАТИТЕ ОТ ИЗПИТВАНИЯТА НА ВИБРАЦИОННИТЕ СИЛИ ЧРЕЗ ПОДОБРЕН МЕТОД НА РАЗЛАГАНЕ НА ЧЕСТОТНАТА ОБЛАСТ	582
<i>Gjorgjiev I., Jekikj G., Zhurovski A.</i> ANALYTICAL VERIFICATION OF RESULTS FROM FORCE VIBRATION TESTS BY ENHANCED FREQUENCY DOMAIN DECOMPOSITION METHOD	
<i>Хандрулева А., Шопов А., Ганев Р.</i> ИЗСЛЕДВАНЕ НА ВЛИЯНИЕТО НА КОРОЗИЯТА ВРЪХУ ДЕФОРМАЦИОННОТО И НАПРЕГНАТО СЪСТОЯНИЕ НА ФЕРМА	592
<i>Handruleva A., Shopov A., Ganey R.</i> SURVEY OF THE INFLUENCE OF CORROSION ON DEFORMATION AND STRAIN SHAPE IN TRUSS STRUCTURES	

<p><i>Христова Д.</i> СЪВРЕМЕННИ ПРОСТРАНСТВА ЗА КУЛТУРА <i>Hristova D.</i> MODERN SPACES FOR CULTURE</p>	593
<p><i>Христовски В., Дужич Б.</i> ИЗСЛЕДВАНЕ НА РАЗЛИЧНИ СИСТЕМИ ЗА ВЪЗСТАНОВЯВАНЕ НА СЪЩЕСТВУВАЩИ СТОМАНОБЕТОННИ КОНСТРУКЦИИ – ИЗПИТВАНИЯ ТИП „SHAKING TABLE“ И АНАЛИЗИ <i>Hristovski V., Dujic B.</i> INVESTIGATION OF THE VARIOUS UPGRADE SYSTEMS ON EXISTING RC STRUCTURES – SHAKING TABLE TESTS AND ANALYSIS</p>	594
<p><i>Канева А., Паскалева И., Иванов Р., Иванчев И., Гороломов А.</i> ПОВЕДЕНИЕ НА ВИК ТРЪБОПРОВОДИТЕ В ПЕРНИК ПРИ ЗЕМЕТРЕСЕНИЕТО 22 МАЙ 2012 <i>Kaneva A., Paskaleva I., Ivanov R., Ivanchev I., Gorolomov A.</i> BEHAVIOR OF THE WATER PIPELINES IN PERNIK DURING THE MAY, 2012 EARTHQUAKE</p>	595
<p><i>Ковачева Д.</i> ОПАЗВАНЕ И УСТОЙЧИВО РАЗВИТИЕ НА КУЛТУРНОТО НАСЛЕДСТВО В СЪВРЕМЕННИЯ ИСТОРИЧЕСКИ ГРАД <i>Kovacheva D.</i> CONSERVATION AND SUSTAINABLE DEVELOPMENT OF CULTURAL HERITAGE IN THE CONTEMPORARY HISTORICAL TOWN</p>	605
<p><i>Куртович-Фолич Н., Жвалиевич-Луксор Н.</i> ОВТОРНО ОЦЕНЯВАНЕ НА КУЛТУРНОТО НАСЛЕДСТВО СЛЕД ЗНАЧИТЕЛНИ ВМЕШАТЕЛСТВА С НОВИ МАТЕРИАЛИ И ТЕХНОЛОГИИ <i>Kurtović-Folić N., Živaljević-Luxor N.</i> RE-EVALUATION OF BUILT HERITAGE AFTER MAJOR INTERVENTIONS WITH NEW MATERIALS AND TECHNOLOGIES</p>	613
<p><i>Лиолиос А., Макариос Т., Лиолиос К., Георгиев К., Георгиев И.</i> ВЕРОЯТНОСТЕН СЕИЗМИЧЕН АНАЛИЗ ЧРЕЗ МОНТЕ КАРЛО СИМУЛАЦИИ НА МОСТОВЕ НА МАГИСТРАЛА „ЕГНАТИЯ“ В СЕВЕРНА ГЪРЦИЯ <i>Liolios A., Makarios T., Liolios K., Georgiev K., Georgiev I.</i> PROBABILISTIC SEISMIC ANALYSIS BY MONTE CARLO SIMULATION FOR EGNATIA HIGHWAY BRIDGES IN NORTHERN GREECE</p>	614
<p><i>Махмуд Е., Абдулахад Е., Бонев З.</i> ВЛИЯНИЕ НА ПЪЛНЕЖНАТА ЗИДАРИЯ ВЪРХУ СЕИЗМИЧНОТО ПОВЕДЕНИЕТО НА СТОМАНОБЕТОННИ РАМКОВИ КОНСТРУКЦИИ <i>Mahmud E., Abdulahad E., Bonev Z.</i> INFLUENCE OF MASONRY INFILL ON THE SEISMIC BEHAVIOUR OF REINFORCED CONCRETE FRAME STRUCTURES</p>	622
<p><i>Махмуд Е., Абдулахад Е.</i> ЕФЕКТИВНА КОРАВИНА НА СТОМАНОБЕТОННИ ЕЛЕМЕНТИ ПРИ СЕИЗМИЧЕН АНАЛИЗ <i>Mahmud E., Abdulahad E.</i> EFFECTIVE STIFFNESS OF REINFORCED CONCRETE ELEMENTS IN A SEISMIC ANALYSIS</p>	633
<p><i>Манчева-Велкова Б.</i> ПРЕДПРИЯТИЯ ЗА СЪХРАНЕНИЕ И ПЕРЕРАБОТКА НА ЗЪРНО ЗА ФУРАЖ <i>Mancheva-Velkova B.</i> ENTERPRISES FOR THE STORAGE AND PROCESSING OF GRAIN FOR FEED</p>	644

<p><i>Манчева-Велкова Б.</i> КОМПОЗИЦИОННИ И ФУНКЦИОНАЛНИ РЕШЕНИЯ НА ПРЕДПРИЯТИЯ ЗА ШОКОЛАДОВИ ИЗДЕЛИЯ, ПРИНЦИПИ НА ПРОЕКТИРАНЕ <i>Mancheva-Velkova B.</i> COMPOSITIONAL AND FUNCTIONAL SOLUTIONS OF CHOCOLATE FACTORIES, PRINCIPLES OF DESIGN</p>	654
<p><i>Манчева-Велкова Б., Цветков С.</i> СЪВРЕМЕННИ ФАРМАЦЕВТИЧНИ ПРЕДПРИЯТИЯ <i>Mancheva-Velkova B., Tsvetkov S.</i> MODERN PHARMACEUTICAL ENTERPRISES</p>	664
<p><i>Манчева-Велкова Б., Цветков С.</i> ПРОЕКТИРАНЕ НА ПЛОДОХРАНИЛИЩА <i>Mancheva-Velkova B., Tsvetkov S.</i> DESIGN OF FRUIT STORAGE FACILITIES</p>	675
<p><i>Мазников А.</i> ПОКРИВНОТО ОСТЪКЛЯВАНЕ ПРИ УСТОЙЧИВОТО РАЗВИТИЕ НА ПРОМИШЛЕНИТЕ СГРАДИ <i>Maznikov A.</i> SUSTAINABLE DESIGN OF SKYLIGHTS FOR INDUSTRIAL BUILDINGS</p>	688
<p><i>Митев М.</i> ВИЗУАЛЕН КОНТАКТ С МОРСКИЯ ПЕЙЗАЖ. ТЕОРИЯ И ПРАКТИКА (НА ПРИМЕРА НА РЕАЛИЗАЦИИ ОТ ЧУЖДЕСТРАННИЯ ОПИТ) <i>Mitev M.</i> VISUAL CONTACT WITH THE MARINE LANDSCAPE. THEORY AND PRACTICE (ON THE EXAMPLE OF FOREIGN EXPERIENCE)</p>	700
<p><i>Нечевска-Цветановска Г., Апостолска Р., Бояджиев Й.</i> ЕКСПЕРИМЕНТАЛНИ ИЗСЛЕДВАНИЯ НА ТРИЕТАЖНА СТОМАНОБЕТОННА СГРАДА С ПЪЛНЕЖНА ЗИДАРИЯ ОТ КУХИ И ПЛЪТНИ ГЛИНЕНИ БЛОКОВЕ <i>Neshevska-Cvetanovska G., Apostolska R., Bojadjiev J.</i> EXPERIMENTAL INVESTIGATIONS OF THREE-STOREY RC BUILDING WITH HOLLOW AND SOLID MASONRY INFILL</p>	710
<p><i>Райновска Р.</i> РАЗВИТИЕ В ТИПОЛОГИЧНАТА СТРУКТУРА НА МУЗЕЙНИТЕ СГРАДИ <i>Raynovska R.</i> DEVELOPMENT IN THE TYPOLOGICAL STRUCTURE OF MUSEUM BUILDINGS</p>	716
<p><i>Ристик Й., Ристич Д., Голубович Н., Митич Л., Миленович Д.</i> СЕИЗМОУСТОЙЧИВА СГЛОБЯЕМА СИСТЕМА ОТ ИНДУСТРИАЛНИ ЗАЛИ, РАЗРАБОТЕНА ВЪЗ ОСНОВА НА ЕКСПЕРИМЕНТАЛНИ ТЕСТОВЕ <i>Ristik J., Ristic D., Golubovic N., Mitic L., Milenovic D.</i> SEISMO-RESISTANT PREFABRICATED SYSTEM OF INDUSTRIAL HALLS DEVELOPED BASED ON EXPERIMENTAL TESTS</p>	717
<p><i>Сариев М.</i> РАЗВИТИЕ НА ФУНКЦИОНАЛНО - ПЛАНОВАТА СТРУКТУРА НА УЛИЧНАТА МРЕЖА ВЪВ ВИСОКОПЛАНИНСКИТЕ РАЙОНИ НА РОДОПИТЕ <i>Sariev M.</i> DEVELOPMENT OF THE FUNCTIONAL STRUCTURE OF THE STREET NETWORK IN THE HIGH-MOUNTAIN AREAS OF THE RHODOPE MOUNTAINS</p>	730

<p><i>Стефанов Д., Васева Е.</i>          МЕТОДИКА ЗА ОЦЕНКА НА СЕИЗМИЧНИЯ РИСК ЗА СГРАДИ.  <i>Stefanov D., Vaseva E.</i>          METHODOLOGY FOR SEISMIC RISK EVALUATION FOR BUILDINGS</p>	740
<p><i>Стоилов Г., Пашкулева Д., Кавърджиков В.</i>          МОНИТОРИНГ НА СТРОИТЕЛНИ КОНСТРУКЦИИ          ЧРЕЗ ЦИФРОВ КОРЕЛАЦИОНЕН АНАЛИЗ НА ИЗОБРАЖЕНИЯ.  <i>Stoilov G., Pashkouleva D., Kavardzhikov V.</i>          A STRAIN SENSITIVE PATTERN FOR STRUCTURAL          HEALTH MONITORING OF CIVIL ENGINEERING STRUCTURES</p>	749
<p><i>Топчиев Х.</i>          РАЗВИТИЕ НА ДИГИТАЛНОТО ПРОИЗВОДСТВО В АРХИТЕКТУРНИЯ ДИЗАЙН          ОТ КРАЯ НА 20 И НАЧАЛОТО НА 21 ВЕК  <i>Topchiev H.</i>          THE EVOLUTION OF DIGITAL FABRICATION IN ARCHITECTURAL DESIGN          AT THE END OF 20th AND THE BEGINNING OF 21st CENTURY</p>	755
<p><i>Власарев Д.</i>          ФУНКЦИОНАЛНО-ЕСТЕТИЧЕСКАТА РОЛЯ НА ЗЕЛЕНАТА СИСТЕМА          В ПРОИЗВОДСТВЕНИТЕ ТЕРИТОРИИ  <i>Vlasarev D.</i>          FUNCTIONAL-AESTHETIC ROLE OF THE GREEN SYSTEM IN MANUFACTURING AREAS</p>	768
<p><i>Власарев Д.</i>          КОМПОЗИЦИОННИ УСТРОЙСТВЕНИ ПРИНЦИПИ ПРИ ПЛАНИРАНЕТО          НА ПРОИЗВОДСТВЕНИЯ МИКРОРАЙОН  <i>Vlasarev D.</i>          COMPOSITIONAL PLANNING PRINCIPLES IN THE PLANNING OF THE PRODUCTION MICRO-          REGION</p>	781

**СЕКЦИЯ 4: СТУДЕНТСКА**

**SECTION 4: STUDENT'S**

<i>Хрисчев Л., Тодоров Д., Спасов К.</i> ДОПУСТИМИ ОТКЛОНЕНИЯ ПРИ ИЗПЪЛНЕНИЕТО НА СТОМАНОБЕТОННИ КОНСТРУКЦИИ	792
<i>Hrischev L., Todorov D., Spasov K.</i> GEOMETRIC TOLERANCES IN EXECUTION OF CONCRETE STRUCTURES	
<i>Неделчева П., Михалева Д.</i> ДЪРВЕНИ КОНСТРУКЦИИ В НЕБЕСАТА	802
<i>Nedelcheva P., Mihaleva D.</i> TIMBER CONSTRUCTIONS IN THE SKY	
<i>Трайкова Марг., Богданова Е.</i> ТЕХНОЛОГИЧНИ РЕШЕНИЯ ПРИ ИЗПОЛЗВАНЕ НА СКЕЛЕТА ОТ БАМБУК В ИНДИЯ	813
<i>Traikova Marg., Bogdanova E.</i> TECHNOLOGICAL SOLUTIONS USING BAMBOO SCAFFOLDING IN INDIA	
<i>Цветков С., Димитров Дес.</i> ПРОЕКТИРАНЕ НА СТОМАНЕНИ ДЪГОВИДНИ ПОКРИВИ	814
<i>Tsvetkov S., Dimitrov Des.</i> DESIGN OF STEEL ARCHED ROOFS	
<i>Цветков С., Рафаилов Р.</i> ПРОЕКТИРАНЕ НА ВИСОКА СТОМАНОБЕТОННА СГРАДА – ПРОБЛЕМИ И РЕШЕНИЯ	815
<i>Tsvetkov S., Rafailov R.</i> DESIGN OF A HIGH R.C. BUILDING – PROBLEMS AND SOLUTIONS	
<i>Вълкова Я.</i> ПРОЕКТИРАНЕ НА ВОДОСНАБДИТЕЛНА И КАНАЛИЗАЦИОННА СИСТЕМА НА ХОТЕЛСКИ КОМПЛЕКС	816
<i>Valkova Y.</i> DESIGN OF WATER SUPPLY AND SEWERAGE SYSTEM IN HOTEL COMPLEX	
<b>ИНДЕКС НА АВТОРИТЕ / AUTHORS' INDEX</b>	<b>817</b>
<b>ГЛАВНИ ОРГАНИЗАТОРИ / MOST ACTIVE ORGANIZERS</b>	<b>819</b>
<b>ИЗВЕСТНИ УЧАСТНИЦИ / WELL KNOWN PARTICIPANTS</b>	<b>822</b>



## ПОЛИТИКИ И УСТОЙЧИВОСТ НА ДОБИВА НА ГРАУВАКИ ОТ КАРИЕРИ В СЕВЕРНА ИРЛАНДИЯ

Робърт Иди<sup>1</sup>, Ричард Малкълмсън

## POLICIES AND SUSTAINABILITY IN GREYWACKE QUARRIES IN NORTHERN IRELAND

Robert Eadie<sup>1</sup>, Richard Malcolmson

### Abstract:

*Northern Ireland has a substantial resource of High Polished Stone Value PSV aggregate. Exports take place to the rest of the UK and Europe. QPANI (2010) identified 183 Quarries and Sand pits within its boundaries. Fifteen of these supply greywacke. The Geological Survey of Northern Ireland (GSNI) consider the total turnover from the quarrying industry to be around £630 million per year: approximately 3% of Gross Domestic Product (GDP) (Belfast City Council, 2017). With substantial demand and a finite resource, the sustainability of greywacke demand strategies for Northern Ireland is examined. With the formation of Local Development Plans (LDP) by the council areas, this research informs on the supply and demand of Greywacke. The current LDP drafts are based mainly on environmental considerations rather than statistical information. The paper identifies that the quarries believe BREXIT will not have a detrimental effect on their trade internally but will have a negative effect on their trade with the rest of Europe. The Geological map of Northern Ireland determines the location of quarries but efficiency of vehicles can be shown to provide a 16.9% reduction in pollution through purchase of more efficient vehicles. This can be achieved through a combined single source policy document as the majority of the quarries shortly will either replace their vehicles or invest in additional ones. In relation to greywacke, reserves are robust in County Down but need examined for Mineral Extraction plans in other counties.*

### Keywords:

*Government Procurement, Civil Engineering Procurement, Sustainability, Aggregates.*

### 1. INTRODUCTION

Northern Ireland Land Matters Taskforce (NILMT) (2015) states that Northern Ireland (NI) is one of the *most varied and complex areas of geology in the world* resulting in a *diverse mineral heritage*. Northern Ireland has an area of around 14 000 km<sup>2</sup> containing three major terranes (Anderson *et al.*, 2004). The first is the Dalradian Supergroup containing the Tyrone Igneous Area and some Ordovician and Silurian sedimentary rocks (Cooper *et. al.*, 2011; Cooper

---

<sup>1</sup> Robert Eadie, Dr., BEng, (Hons) MSc (DIS) PhD, School of the Built Environment, Ulster University, Jordanstown Campus, Newtownabbey, Northern Ireland; e-mail: r.eadie@ulster.ac.uk.

and Johnston, 2004a). The second is in the Northeast where the Antrim Plateau is composed of Palaeogene basaltic lava with underlying Carboniferous, Permian, Triassic, Jurassic, and Cretaceous rocks (Mitchell, 2004). The final one is the Southern Uplands-Down-Longford terrane and is the one that is of interest to this study. It is formed from Ordovician and Silurian rocks (Anderson, 2004) but includes the Lower Devonian Newry Igneous Complex (Cooper and Johnston, 2004b) and Palaeogene Slieve Gullion and Mourne complexes (Cooper and Johnston, 2004c) with the greywacke (a form of sandstone) shown in Figure 1.

A Geological map of Northern Ireland (QPANI, 2010) indicates the mineral deposits are not evenly distributed across NI (Figure 1). As a result, demand often occurs at locations a distance from the quarry. QPANI (2010) identified 183 Quarries and Sand pits within NI. However, according to QPANI (2010) only sixteen of these supply Greywacke. However, one of these no longer produces aggregates. This study examined Greywacke use as it has the lowest number of quarries for any individual mineral excavated within NI. In addition, the research was limited to greywacke because of its high Polished Stone value (PSV) and therefore its use in road surfaces. Demand for greywacke from Northern Ireland is high in the UK, Europe and further, and includes the A15 extension, which connects to the Port of Rotterdam and is Europe's busiest motorway (McKeown, 2017). As a result, it is a scarce resource as there are few quarries to produce the adequate tonnage of the mineral to meet the demand in NI, the Republic of Ireland, Europe and the UK. Due to the geology, the main source of greywacke comes from County Down with eleven quarries, followed by County Armagh with two and then County Antrim and County Tyrone with one each (QPANI, 2010).

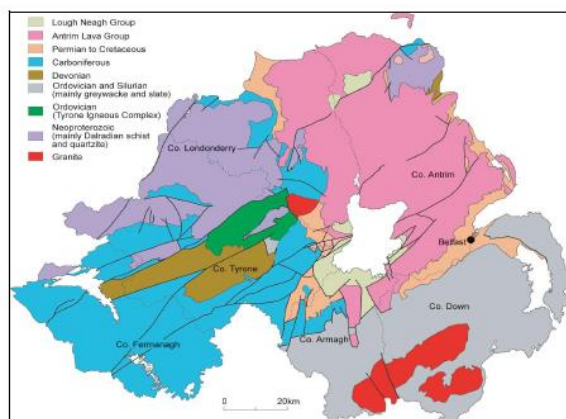


Figure 1 Mineral Deposits and quarry locations across Northern Ireland (QPANI,2010).

While the geographical locations of the current quarries are known, information on the flow of minerals in NI is not, therefore, it is difficult to accurately determine a planning policy for the Quarry industry. Currently each new planning application for a quarry does not have specific planning advice but is considered on a case-by-case basis in relation to constraints on the amount of excavation against environmental and local habitat damage. Furthermore, as a result this research needs to look at current capacities.

### 1.1. Brexit, Capacity and Transport

Production output of aggregates from NI were last measured prior to the economic crisis in 2008 (QPANI, 2010). QPANI (2010) showed that between Since then the recession had a major impact on the quarry sector starting in 2007, with a drop in personnel from over 5000 to 3750 in 2010. There is concern in NI that BREXIT will mean a smaller amount of major capital projects in NI and thus lower demand for aggregates (NICG, 2016). Dhingra *et.al.* (2016) states that

leaving the EU, “would lower trade between the UK and the EU because of higher tariff and non-tariff barriers to trade”. Rafal *et.al.* (2016) further state, “Real exports would initially drop by 8% if the UK were to lose its preferential access to the EU market”. There are concerns on the impact on the aggregates sector should BREXIT have the same effect on greywacke exports. This may be mitigated though its highly regarded PSV values. This paper seeks to examine perceptions of quarry staff of the impact of BREXIT as this has not previously been examined.

Capacity through lower demand due to BREXIT and the economic downturn is a concern in Ireland. Lower levels of construction within Northern Ireland have weakened demand. Accordingly, as previously mentioned quarries have reduced their workforce to remain lean. However, QPANI (2015) have raised anecdotal concerns from within the industry that lower demand has weakened the construction industry to the extent that if demand increased for aggregates, quarries would not be able to meet the increase in demand or have the adequate reserves in place. This piece of research is therefore important in planning and safeguarding future sites so there are adequate reserves of greywacke if the demand rises.

Transport considerations also need to be taken into consideration as the mineral sector has a high impact on congestion of roads and therefore the environment. Hill *et.al.* (2014) further identify high-energy use and carbon footprint as a by-product of the aggregates industry. Zuoa *et.al.* (2013) identify mitigation measures in order to increase sustainability and lower CO2 emissions from quarries in England and Wales.

1. Move the Quarry closer to the demand. This firstly requires a new source and planning approval to mine aggregates. Existing quarries cannot be moved and it can be seen from Figure 1 that the geology does not support this.
2. Deliver by train. The rail network in NI contains only 210KM of track and would need large financial investment to provide the suggested service.
3. Improve the vehicles so they are more environmentally friendly and efficient. This is really the only viable option in NI.

Quarry rolling stock within NI has not been previously examined in depth. For each quarry in NI the haulage miles covered will vary in order to deliver the aggregate to where the demand arises. The average distances travelled per year will be examined within this paper.

## 1.2. Policies and Documents

With the need to reduce CO2, Mineral planning policies need to be put into place to engender a sustainable quarry sector in Europe and Northern Ireland. While the Geological Survey of Northern Ireland (GSNI) provides information through maps, boreholes and site investigation reports, it does not provide information on the supply and demand of minerals or predict the future demand of minerals in NI. This has been identified as a knowledge gap by NIMLT (2015) who state, “it is essential that they assess the supply and demand requirements for aggregates not only within their own council area, but also that of other council areas”. Furthermore McCabe *et. al.* (2008) indicates that the policies used for the preparation of policy such as the SEA Directive, the Planning Strategy for Rural Northern Ireland (PSRNI) and the Regional Development Strategy NI 2025 used information that did not show the demand for aggregates and relied upon information that was “inadequately researched” by using for example average excavation tonnage figures from the nineties.

Comparing the policies used by NI to England and Wales where policies are updated and consider issues such as production, movement and consumption (Ike and Van Der Molen, 2005), the planning policies and processes in NI need to be updated. Production, supply, demand, and the capacities and reserves of the quarries need to be examined in order to determine future requirements. Nickless *et.al.* (2014) indicate that NI is not the only place where this is the case, showing that “Many (most) jurisdictions lack a policy framework which requires consistent

*mineral resource reporting standards*”. To put this into place will result in the Quarry Industry future proofing and therefore safeguarding sites where mineral access is available. To do this however, NIMLT (2015) show that future demand needs to be analysed and predicted so future reserves are adequate. QPANI (2010) shows that Policy 19 on mineral supply and demand is to be created in the future and this will cover all factors affecting the Quarry industry.

### 1.3. Reserves, Mineral Mapping and Greywacke Supply and Demand

In terms of minerals, Scholz *et.al* (2013) define reserves as, “*the total resources that can be economically extracted with available technology and energy under environmentally and socio-economically acceptable conditions*”. They split the overall amount of a mineral into three categories: (i) reserves, (ii) resources, and (iii) geopotential, with the reserves being a subset of the other two. Resources are minerals that are currently uneconomic to extract and geopotential are resources and reserves of the future unknown at present. This paper examines expansion of the quarry sector, but is only concerned with the reserve element of mineral extraction.

As population increases within NI and as a result demand for minerals increase, it is important that new mineral reserves are discovered. Mineral mapping can help discover and safeguard sites for future excavation (NIMLT, 2015). As far back as McKelvey (1972), it was suggested that even if only provisional estimates are made this will help to aid policy decisions in relation to reserves and where there is the need to reserve certain sites for future excavation. McKelvey (1972) further suggested that when carrying out the mineral mapping, groups of resources by size, grade, accessibility of workable deposits and costs of mineral should be used to determine the best sites to safeguard. As this paper examines High PSV Greywacke quarries only, hence these are previously determined, it is only seeking to determine reserves and ability to expand at each of the quarry locations.

QPANI (2010) reported that despite the recession that demand for Greywacke was constant until the recession. Highley *et. al.* (2013) showed that Greywacke has high PSV values and the demand of such minerals for the use on roads in the UK and Europe is substantial. QPANI (2010) stated that “*approximately 600,000 tonnes of High PSV Gritstone is exported annually*”. This needs to be examined more fully and incorporated into the overall needs assessment for the material. The Environmental Protection Agency (2006) used three scenarios to predict the future demand of aggregates in the Republic of Ireland by using the previous demand each year and correlating it to construction output as a percentage of the GDP. Aggregates were subdivided into two types: Primary and Secondary aggregates. Primary aggregates are directly extracted from the ground whereas secondary ones are recycled. Any assessment of future needs has to examine the percentage of each type of aggregate. This paper seeks to fill the knowledge gap in relation to aggregate supply in NI Quarries for Greywacke and relate this to the policies.

## 2. RESEARCH METHOD

QPANI (2010) list 16 greywacke quarries in Northern Ireland. All of the greywacke quarries were contacted as part of this research. Twelve out of the sixteen responded with nine fully completing the questionnaire (75% total response, 56.25% complete response rate). One of the incomplete responses was from a quarry designated as producing greywacke but stated it no longer produces the material and responded it had no reserve capacity of greywacke. Taking this into account the figures for response rate rise to 80% total and 60% respectively and analysis was on the 15 working quarries. Two of these quarries considered capacity was commercially sensitive information and did not complete that section of the questionnaire. Five others opted out of the study as they did not want to place information in the public domain. It should be noted that the major exporter of aggregates to Europe from Northern Ireland did not complete the survey. The findings show those who completed the survey do not export to Europe apart from

the Republic of Ireland. Rubin and Babbie (2009) state a minimum response rate of 50%. With 9 out of 16 complete responses received and 3 partially complete, this met the minimum response rate for validity. Limesurvey™, an on-line PHP and MYSQL package was used to disseminate the survey. The software allows the received surveys to be analysed.

### 3. FINDINGS

#### 3.1 Findings on BREXIT

Responses were received for 12 of the 15 working quarries for these questions. The results are presented in Table 1. The results in Table 1 indicate that the majority of quarries consider that there will be a negative impact on trade with Europe including the Republic of Ireland (ROi) (66%). This confirms the negative impact predicted by models such as OECD’s METRO model (Rafal *et.al.*, 2016) and the E model (Swati *et.al.*, 2016) which both predicted that BREXIT would have a negative effect on trade with Europe. However, most (77%) predicted little change and some even predicted an increase in demand within the internal market (8.33%). One quarry stated that was because “As BREXIT is established demand for aggregates in South East England may rise as imports from Europe may fall. However capacity and efficiency to market will be crucial if Northern Ireland is to fill the market gap”. This could benefit NI quarries in partially filling the predicted gap in the future as exports to Europe are predicted to fall.

Table 1 Impact of BREXIT on the Quarrying Industry

Impact of BREXIT	Northern Ireland			England, Scotland, Wales			Rest of Europe (Including ROI)		
	No	%	+/-	No	%	+/-	No	%	+/- %
1= Large Negative Effect	0	0.00	16.67	0	0.00	16.67	2	16.67	66.67
2 = Small Negative Effect	5	16.67		2	16.67		6	50.00	
3 = No change	6	75.00	75	9	75.00	75	4	33.33	33
4 = Small Positive Effect	1	8.33		1	8.33		0	0.00	
5 = Large Positive Effect	0	0.00	8.33	0	0.00	8.33	0	0.00	0.00

Statistics provided on output in the past 5 years to these regions are provided in Table 2. What these statistics show is that the amount of gritstone sent to England, Scotland and Wales over doubles that sent to the Republic of Ireland (ROI). Therefore, the two regions where most (75%) consider that there is no change are the regions where most of the aggregate is being used in. The values in this response were received from 9 quarries and then factored up to provide a figure for all 15 quarries in Northern Ireland.

Table 2 Northern Ireland Quarry Markets

	Northern Ireland	England, Scotland, Wales	Rest of Europe (Including ROI)
Amount in Tonnes (Ave per year last 5 Years)	1293785.8	208236.2	93479.6
Factored for 15 Quarries	2156309.7	347060.3	155799.3
Total (Ave per year last 5 years)	2659169.3		

The possibility of an increase in the England Scotland and Wales market even by a small amount may therefore negate the negative impacts of cross border trade. The impact of BREXIT on the aggregates industry therefore may not be as dramatic as in other industries. However, as

the QPANI (2010) identified a 2008 value of 2,696,712 tonnes per year taking into account the economic downturn. The figures in Table 2 show that this value has remained constant since at the slightly lower value of 2,659,169.3 tonnes per year. These values confirm the QPANI (2015) statement that output has remained static since the downturn. They further confirm the QPANI (2015) and NICG (2016) concerns that owing to the reduction in staff at the quarries that should the demand increase, there will be issues with meeting it.

### 3.2 Findings on Capacity

Table 3 indicates the capacities and life expectancy for quarries in Northern Ireland. This indicates that County Down and County Armagh have enough reserves of Greywacke for many years. However, due to the geographical constraints in Northern Ireland the other counties are not as well off. Care needs to be taken in the Antrim Lava area shown on Figure 1 as supplies will need to be supplemented from other regions in the near future.

Table 3 Future Capacity in Northern Ireland Quarries

Quarry	Life expectancy	Amount of Greywacke in Tonnes
1	10-20 years	3000000
2	More than 20 years	500000
3	More than 20 years	20000000
4	More than 20 years	20000000
5		4000000
6	10-20 years	4100000
7	2-5 years	1500000

### 3.3 Findings on Transport Issues

Transport issues and fleet usage were examined during the study in order to see if the aggregates industry could minimise its CO2 emissions. Figure 2 indicates that no vehicles travel more in the Urban environment than the Rural and 41% of vehicles have an even split between Rural and Urban environments. Figure 2 results showed that the majority of the time the remaining 59% were travelling the majority of their time on rural networks: Rural 60% Urban 40% (17%), Rural 80% Urban 20% (25%) and Rural 90% Urban 10% (17%). This is determined by location and demand needs. However, on examination of fuel efficiency the impact is seen.

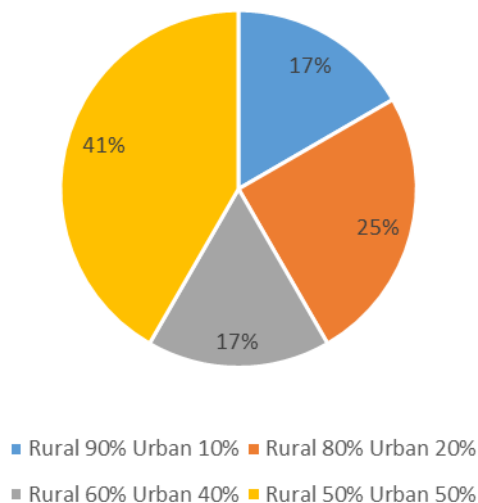


Figure 2 Split between Rural and Urban Travel

Vehicle efficiency is important when considering the environment. The findings show that Miles per Gallon (MPG) can substantially vary depending on the type of vehicle used. The lowest MPG was 6 and the highest was 10. Thus, Table 4 indicates that newer vehicles can achieve 40% more miles per gallon than older ones. It is important to recognise the effect this has on the environment. Table 4 indicates that the quarries using the most polluting vehicles can reduce pollution by as much as 16.9% when taken as a percentage of the miles travelled per year. Comparing like with like, there was 3 tonnes more CO<sub>2</sub> produced from a vehicle with a MPG of 6 compared to a vehicle that had a MPG of 7. This shows the importance of upgrading vehicles to more efficient ones as it has a significant impact on the environment. This supports the findings of Zuo *et al.* (2013), who examined the effect of lowering emissions through the efficiency of the vehicles.

The survey did show that some quarries were covering up to 140 miles per trip on the island of Ireland while others were only delivering within 15 miles with a 30 mile round trip. This shows the different locations of demand. The more quarries in a certain area the further they appear to deliver. This may be due to competition and saturation nearer the location. Geological constraints impact on quarry locations but the effect of transport should be taken into account in the planning process. The Planning Strategy for Rural Northern Ireland (PSRNI) does have policies that deal with transportation but it does not take into consideration the effects of mileage and the importance of updating vehicles to make them more environmentally friendly.

Table 4 CO<sub>2</sub> produced per year (tonnes) per quarry calculated through average mileage & MPG

Survey ID	Miles	MPG	CO <sub>2</sub> Tonnes / year	CO <sub>2</sub> Tonnes / quarry / mile	% above lowest
10	50	7	18.12748	0.363	+10.9
13	200	9	56.39661	0.282	+2.8
2	50	6	21.14873	0.423	+16.9
25	100	6	42.29745	0.423	+16.9
20	50	7	18.12748	0.363	+10.9
28	50	6.4	19.82693	0.396	+14.2
14	75	10	19.03385	0.254	0
22	200	7	72.50992	0.362	+10.8

Additionally all quarries stated they were not aware of Government planning Documents which deal with the effect of Lorries on the environment. Information about regulation and content of these documents needs to be made more accessible for quarries so that they can stay up-to-date with information and receive reminders of the importance of and changes to the planning documents in relation to the environment. The time to disseminate this information and put into place regulation is now as 66% of quarries intend to renew their current fleet of lorries, and 44% intend to expand their fleet. So in order to maximise the impact on CO<sub>2</sub> regulation as to the type of vehicle they are buying new or replacing existing stock with should be adopted. Comments from the quarries prove that when purchasing a new vehicle MPG is the most important factor. Therefore it is important to support this with regulation. This indicates that quarries consider fuel efficiency very important and this will help lower the effects on the environment.

### 3.4 Findings on Planning Policy and supply

Recycling is an important part of being sustainable and in calculating the overall capacity of aggregate production. Only four quarries of the twelve quarries who responded stated that they practiced recycling. There needs to be an increase in recycling as the future reserves of

aggregate will become exhausted, and the access to these resources will become more difficult as construction of roads and housing continues to increase.

Plans for extension of existing quarries were then examined. Five out of the twelve quarries responded. Four of the quarries who responded (80%) stipulated that planning was a major concern in relation to expansion. Issues raised in relation to planning included “*planning cost associated with overburden removal*” and “*Ribbon Development*”. There is one quarry that will close in the next 5 years so planning needs to examine if another needs to be opened to meet the demand.

Only three quarries responded in relation to identifying planning documents in relation to mineral policies. While current policies in relation to *restoration of sites* and to *deal with noise, dust and pollution* were identified the background planning policies were not. One quarry also identified the need for a mineral policy for the aggregates sector. It would be good if the planning documents in relation to this could collate all the information on mineral extraction and planning into a single location in order to increase access to the required information. This would support the quarry sector allowing it to become more efficient and sustainable as well as environmentally friendly.

#### 4. CONCLUSIONS

This study examined the quarry industry in Northern Ireland from four perspectives: BREXIT, capacity, transport and planning. Responses were received from 12 of the 15 working greywacke quarries in the province.

The findings indicate that as the majority of greywacke excavated is for the home and remainder of the UK market that BREXIT may even increase the requirements internally due to a restriction of imports. However, this is balanced by an expected drop in exports to the Republic of Ireland on the negative side. The production output of greywacke has remained static since the economic crisis in 2007. With this in mind, current demand indicates County Down has sufficient reserves for over 20 years. However, other areas of NI require materials transport, as County Antrim does not have much by way of reserves due to its geology. Planning policies need to take into consideration the geological locations of greywacke and plan accordingly.

The time to produce a standard for vehicle efficiency for quarries has arrived to support those quarries in reinvestment in vehicles. Some of the newer vehicles are achieving 40% more miles per gallon than the older ones and the findings show that this could lead to a 16.9% reduction in pollution. Currently, 66% of quarries intend to renew their current fleet of lorries and 44% intend to expand their fleet so if they could be encouraged to choose on the basis of increased MPG through legislation or guidance this could be an easy win for the environment.

Finally, the findings show that not all quarries are aware of the policy around their work and extra visibility could be attained if all the planning and mineral extraction documentation relating to procedures, planning and use could be collated into a single source document. Further work needs to be carried out to determine the full contents of this but it would support the industry in becoming more efficient and sustainable as well as environmentally friendly.

#### 4. ACKNOWLEDGEMENTS

The authors would like to thank Gordon Best of the Quarry Products Association Northern Ireland and those who completed the survey for their assistance and support.



## REFERENCES

- [1] Anderson T., (2004) Southern Uplands-Down-Longford Terrane. The Geology of Northern Ireland - Our Natural Foundation. 2nd Edition. Mitchell, W. (ed.). Geological Survey of Northern Ireland, Belfast. pp. 41-60.
- [2] Anderson T., Johnston, T., and Mitchell, W. (2004) Basement structure and the terrane model. The Geology of Northern Ireland - Our Natural Foundation. 2nd Edition. Mitchell, W. (ed.). Geological Survey of Northern Ireland, Belfast. pp.1-8.
- [3] Belfast City Council (2017), Local Development Plan 2010-2035, Available at <http://www.belfastcity.gov.uk/nmsruntime/saveasdialog.aspx?IID=20503&sID=18628> (Accessed 26/03/18)
- [4] Cooper M., Crowley, Q., Hollis, S., Noble, S., Roberts, S., Chew, D., Earls, G., Herrington, R. and Merriman, R. (2011). Age constraints and geochemistry of the Ordovician Tyrone Igneous Complex, Northern Ireland: implications for the Grampian orogeny. *Journal of the Geological Society, London*, 168, pp. 837-850.
- [5] Cooper M., and Johnston, T.P. (2004a) Chapter 2, Central Highlands (Grampian) Terrane - Metamorphic Basement. In: *The Geology of Northern Ireland - Our Natural Foundation*. Mitchell, W. (Ed.). (2nd Edition), Geological Survey of Northern Ireland, Belfast. pp. 9-24.
- [6] Cooper M. and Johnston, T. (2004b) Chapter 15, Palaeogene Intrusive Igneous Rocks. In: *The Geology of Northern Ireland – Our Natural Foundation*. Mitchell, W. (Ed.). (Second Edition), Geological Survey of Northern Ireland, Belfast. pp.179-198.
- [7] Cooper M. and Johnston, T. (2004c) Chapter 5, Late Palaeozoic Intrusives. In: *The Geology of Northern Ireland – Our Natural Foundation*. Mitchell, W. (Ed.). (Second Edition), Geological Survey of Northern Ireland, Belfast. pp. 61-68
- [8] Dhingra S., Ottaviano, G., Sampson, T. and Van Reenen, J. (2016) The consequences of Brexit for UK trade and living standards. CEP BREXIT Analysis No.2, CEPBREXIT02. London School of Economics and Political Science, CEP, London, UK.
- [9] Highley D., Harrison, D., Cameron, D. and Lusty, P. and Cowley, J. (2013) Construction aggregates, British Geological Survey: Department for Communities and Local Government.
- [10] Hill R., and Bowen, P. (2010) 'Sustainable construction: principles and a framework for attainment', *Construction Management and Economics*, 15(3), pp. 223-239.
- [11] Ike P. and Van Der Molen, S. (2005), *Minerals Planning Policies and Supply Practices in Great Britain*. RUG - Faculty of Spatial Sciences, Groningen.
- [12] McCabe M., Beggs, A., and McShane, D. (2008) Public Examination into Objections to the Draft Banbridge / Newry and Mourne Area Plan 2015, Planning Appeals Commission: The Planning (Northern Ireland) Order 1991. Available at [https://www.planningni.gov.uk/downloads/combined\\_bnm\\_report.pdf](https://www.planningni.gov.uk/downloads/combined_bnm_report.pdf) (Accessed 26/03/18)
- [13] McKelvey V. (1972) Mineral Resource Estimates and Public Policy: Better methods for estimating the magnitude of potential mineral resources are needed to provide the knowledge that should guide the design of many key public policies, *American Scientist*, 60 (1) (January-February 1972), pp. 32-40
- [14] McKeown G. (2017), Co Down stone paving Europe's busiest roads, Available at <http://www.irishnews.com/business/2017/05/15/news/co-down-stone-paving-europe-s-busiest-roads-1024824/> (Accessed 26/03/18)
- [15] Nickless E., Bloodworth, A., Meinert, L., Giurco, D., Mohr, S., Littleboy, A. (2014) Resourcing Future Generations, *Mineral Resources and Future Supply*, 1(1), pp. 1-44.
- [16] Northern Ireland Construction Group (2016) Implications for the construction industry in Northern Ireland of the UK's decision to leave the EU and next steps, Available at: <https://www.ice.org.uk/ICEDevelopmentWebPortal/media/Documents/News/ICE%20News/NI-Construction-Group-Brexit-Paper.pdf> (Accessed: 26/03/18).

- 
- [17] Northern Ireland Land Matters Taskforce (NILMT) (2015), Towards a Land Strategy for Northern Ireland, Available at [https://www.nienvironmentlink.org/cmsfiles/Towards-a-Land-Strategy-for-NI\\_2015-Main-Report.pdf](https://www.nienvironmentlink.org/cmsfiles/Towards-a-Land-Strategy-for-NI_2015-Main-Report.pdf) (Accessed 27/03/18)
- [18] Environmental Protection Agency (2006) Environmental Management in the Extractive Industry, Ireland: Environmental Protection Agency. Available at [https://www.epa.ie/pubs/advice/general/EPA\\_management\\_extractive\\_industry.pdf](https://www.epa.ie/pubs/advice/general/EPA_management_extractive_industry.pdf) (Accessed 26/03/18)
- [19] OECD (2016) 'The Economic Consequences of Brexit: A Taxing Decision', OECD Economic, pp. 1-35. Available at <http://www.oecd.org/eco/the-economic-consequences-of-brexit-a-taxing-decision.htm> (Accessed 27/03/18)
- [20] Prentice J.(1990) *Geology of Construction Materials*, 1 edn., London: Chapman and Hall
- [21] Quarry Products Association Northern Ireland (QPANI) (2015) *Competitive Analysis of the Construction Materials Sector on the Island Of Ireland- an Update*, 2nd Edition, Northern Ireland: Irida Constructing Limited.
- [22] Quarry Products Association Northern Ireland (QPANI) (2010) *OFT Market Study into the UK Aggregates Sector: A Northern Ireland perspective into the local aggregates sector*, 1st Edition, Nutts Corner County Antrim: Quarry Products Association Northern Ireland.
- [23] Rubin, A. and Babbie, E. (2009) *Essential Research Methods for Social Work*, USA:Cengage Learning.
- [24] Scholz R., and Wellmer, F. (2013), Approaching a dynamic view on the availability of mineral resources: What we may learn from the case of phosphorus? *Global Environmental Change*, 23(1), pp. 11-27
- [25] Zuoa C., Birkina, M., Clarke, G., McEvoy, F., and Bloodworth, A. (2013) 'Modelling the transportation of primary aggregates in England and Wales', *Exploring initiatives to reduce CO2 Emissions*, 34(1), pp. 112-224.