



Experimental characterisation of a flat panel integrated collector-storage solar water heater featuring a photovoltaic absorber and a planar liquid-vapour thermal diode

Adrian Pugsley¹, Mervyn Smyth¹, Jayanta Deb Mondol¹,
Aggelos Zacharopoulos¹, Luigi Di Mattia²

¹ Ulster University, Faculty of Art, Design and the Built Environment,
Centre for Sustainable Technologies, Belfast (UK)

² University of Naples "Federico II", Dept. Energy Applied Thermal Fluid Dynamics &
Environmental Influences, Naples (Italy)

Abstract

A flat panel Integrated Collector-Storage Solar Water Heater (ICSSWH) incorporating a photovoltaic-thermal (PVT) absorber and a Planar Liquid-Vapour Thermal Diode (PLVTD) was fabricated. Tests indicate zero temperature rise instantaneous thermal and electrical efficiencies of 60% and 9% respectively, dropping to 40% and 6% under nominal intended operating conditions (600 Wm⁻² irradiance, 50°C storage tank, 20°C ambient temperature). Measured overall heat loss coefficient was 0.85 Wm⁻²K⁻¹ and thermal diode conductances were typically 45 Wm⁻²K⁻¹ during solar collection periods and 1.7 Wm⁻²K⁻¹ during heat retention periods. The work demonstrates that ICSSWH, PVT and PLVTD concepts can be successfully combined to create a scalable flat panel solar collector suitable for integration within a multifunction building facade.

Keywords: *Integrated-Collector-Storage Solar Water Heater (ICSSWH), Photovoltaic-Thermal (PV/T), Building Integrated Solar Thermal (BIST), Building Integrated Photovoltaic (BIPV), Thermal Diode*

1. Introduction

This paper presents key findings of experimental investigations undertaken to characterise behaviour of a flat panel Integrated Collector-Storage Solar Water Heater (ICSSWH) incorporating a photovoltaic-thermal (PVT) absorber and a Planar Liquid-Vapour Thermal Diode (PLVTD). This new hybrid solar collector type is intended for integration within multifunction building façades to provide low temperature hot water and electrical power to buildings. The paper briefly introduces the concept and cites influential prior work. The theoretical basis for the concept is outlined and modelling results are presented which demonstrate how collection, retention and diurnal thermal efficiencies are influenced by diode thermal conductances. Methodology and results of the experimental investigation are presented. Measurement results are compared to those typically achieved by comparable collector types and recommendations are made for future work.

1.1. Thermal and photovoltaic solar collectors

The Renewable Energy Directive (EU, 2009) sets a target of 20% of EU gross final energy consumption to be supplied from renewables by 2020. Increasing solar energy utilization plays a key role in meeting the target. Solar Thermal (ST) systems are expected to make a significant contribution to renewable heat targets in addition to renewable electricity supplied by already popular PhotoVoltaic (PV) systems. Traditionally, building mounted ST competes with PV for suitable roof or façade space. Combining technologies gives rise to PhotoVoltaic-Thermal (PVT) solutions which deliver low to medium temperature solar heat at efficiencies marginally lower than conventional ST collectors and generate electricity similar to standard PV modules.

Careful design is necessary as most building thermal demands require heat to be delivered at temperatures significantly above ambient which reduces both thermal and electrical efficiencies. Domestic hot water, space heating and cooling systems which combine, ST, PV or PVT collectors with heat pumps appear to be a promising development area and a popular subject for current applied research (Good et al., 2015; Aguilar et al., 2016; Calise et al., 2016; Poppi et al., 2016; Qu et al. 2016).

Zondag (2008) gives a comprehensive review of PVT collector development, covering both air and water heating variants. More recent reviews are given by Michael et al. 2015 and Besheer et al. 2016. Santbergen et al. (2010) and Dupeyrat et al. (2011) specifically examine module design, construction, and heat transfer aspects of PVT-water collectors for domestic hot water production. Most PVT-water collectors take the form of photovoltaic cell laminates glued or bonded to sheet-and-tube, flow channel, or roll-bond type solar thermal absorbers. Packing Factor (PF) is the ratio of PV cell area to total absorber area. Thermal efficiency is maximized by ensuring absorber substrates are matt black or selectively coated to maximize solar thermal input. Bonding layers between PV cells and absorber substrates should be thin and thermally conductive. Convective heat transfer within the working fluid should be promoted. Zondag (2008) cites PVT-water collector examples featuring overall cell-to-fluid conductances in the range 40 to 250 Wm²K⁻¹. Low conductances increase PV cell temperatures which reduce both electrical and thermal efficiencies. Thermal efficiencies of PVT collectors are typically lower than those of dedicated ST collectors due to lower absorption coefficients of encapsulated PV cells ($0.7 \leq \alpha \leq 0.9$ as opposed to $\alpha = 0.95$ for matt black surfaces) and also because some of the available energy ($15 < \eta_{E(0, mpp)} < 20\%$ typically for crystalline silicon cells) is extracted as electricity. Silicon cells produce a nominal voltage of 0.55V per cell but this reduces significantly with increasing temperature ($\sim 0.45\%/^{\circ}\text{C}$) and falls markedly under low irradiance conditions (below about 200 Wm²). Photovoltaic current is directly proportional to irradiance and only slightly temperature dependent. Temperature nonuniformities across PVT absorber surfaces can significantly reduce electrical efficiency if cells are connected in parallel but generally have minimal effect on series connected cells.

Smyth et al. (2006) present a thorough review of Integrated Collector-Storage Solar Water Heaters (ICSSWH). These collectors can be significantly more cost effective than conventional ST systems because they have fewer components and require less floor space for water storage tanks. However, inherent exposure of the thermal storage to the outdoor environment (via the absorber surface) means that ICSSWH collectors suffer from heat loss at night and during periods of low insolation, particularly if installed in cold and windy climates. Most ICSSWH designs utilize one or more transparent covers to reduce heat loss. Various researchers have examined the use of novel techniques to improve heat storage effectiveness in ICSSWH collectors, including use of reflectors, concentrators, inlet diffusers, baffles, sleeves, phase change materials and thermal diodes. A recent review by Singh et al. (2016) attempts to categorise ICSSWH designs according to whether they are non-concentrating (eg flat plate or tank box systems), concentrating (eg compound parabolic) or employing phase change materials. Performance comparisons between different ICSSWH collectors are commonly made by considering collection efficiencies (typically $15 < \eta_{col} < 50\%$), overall heat loss coefficients (typically $2 < U_{sys} < 7 \text{ Wm}^{-2}\text{K}^{-1}$), and maximum daily stored water temperatures (typically $30 < T_{max} < 60^{\circ}\text{C}$).

Façade mounted Building Integrated (BI) solar collectors (BIST, BIPV and BIPVT) offer viable alternatives to bolt-on roof mounted collectors if structural, functional, aesthetic and cost considerations are addressed holistically to achieve high quality architecturally integrated solutions. Combining façade integrated BIPVT with improved ICSSWH technology potentially offers attractive and cost effect solutions for new buildings and refurbishments, particularly in multi-tenanted dwellings, hotels, and hospitals which have significant demands for low temperature heat and typically have limited roof-space available for solar collectors.

1.2. Thermal diodes and development of the PVT-PLVTD-ICS concept

A thermal diode is a unidirectional heat flow device analogous to an electrical semiconductor diode which offers low resistance to heat flow in one direction and higher resistance in reverse. Most studies involving thermal diodes focus on liquid convective devices (Kolodziej et al., 1997; Mohamad, 1997; Chen et al., 1998; Smyth et al., 1999; Faiman et al., 2001; Sopian et al., 2004; Fang & Xia, 2010; Rhee et al., 2010) but few consider phase change diode concepts. De Beijer (1998) proposed a horizontal cylindrical building integrated roof-ridge ICSSWH employing a liquid-vapour-liquid phase change thermal diode. Studies from Ulster

University (Quinlan et al., 2008; Quinlan, 2010; Souliotis et al., 2011) fabricated and tested similar devices in both horizontal and vertical orientations. The best of several $\sim 25 \text{ L/m}^2$ prototypes investigated by Quinlan (2010) was DVICS Mark VI which achieved $\eta_{\text{col}}=38\%$, $T_{\text{max}}=44^\circ\text{C}$ and $U_{\text{sys}}=1.3 \text{ Wm}^{-2}\text{K}^{-1}$ during solar simulator tests. These performances (particularly heat loss coefficients) compare favourably with values reported in Section 1.1. Calculations based on Quinlan's results suggest that the $x\approx 25\text{mm}$ wide thermal diode in DVICS Mark IV offered $U_{12f}\approx 20 \text{ Wm}^{-2}\text{K}^{-1}$ during collection periods and $U_{12r}\approx 2 \text{ Wm}^{-2}\text{K}^{-1}$ during retention periods. Boreyko et al. (2011) and Boreyko & Chen (2013) investigated planar jumping-drop liquid-vapour-liquid thermal diodes primarily aimed at microelectronics cooling applications, but recognised their potential use in solar collectors. High conductances of $U_{12f}=40500 \text{ Wm}^{-2}\text{K}^{-1}$ and $U_{12r}\approx 165 \text{ Wm}^{-2}\text{K}^{-1}$ were reported, seemingly enabled by highly effective evaporator wetting, thorough removal of non-condensable gases, and small diode cavities ($x\approx 2.5\text{mm}$). Thermal diode behavior is eminently suited to ICSSWH applications which inherently require rapid heat transfer from absorber to storage tank during sunny daytime periods (collection/forward mode) and thermal insulation to minimise tank heat losses during cloudy and overnight periods (retention/reverse mode). Unfortunately, the reverse mode conductances achieved by Boreyko et al. are unlikely to be beneficial in reducing tank heat losses. Recent work at Ulster University has progressed the patented vertical cylindrical liquid-vapour-liquid phase change thermal diode ICSSWH concept (Smyth, 2015) and evaluated commercial feasibility (Solaform, nd). Several design variants are currently evolving, aimed at cost reduction, improved evaporator wetting, and flattened forms compatible with PVT and building façade integration (Smyth et al., 2015 & 2016; Pugsley, 2017). The present paper details results of tests undertaken on the first truly flat panel prototype, the design of which is shown in Figure 1. Unlike previous design variants, the prototype examined in this study features resin-bonded PV cells and the liquid-vapour thermal diode has a much wider cavity ($x=70\text{mm}$) than any others encountered in the literature with the aim of reducing overnight heat losses. The diode is planar in form to facilitate building façade integration and features a novel internal support structure similar to that employed in vacuum glazing (Fang et al., 2004).

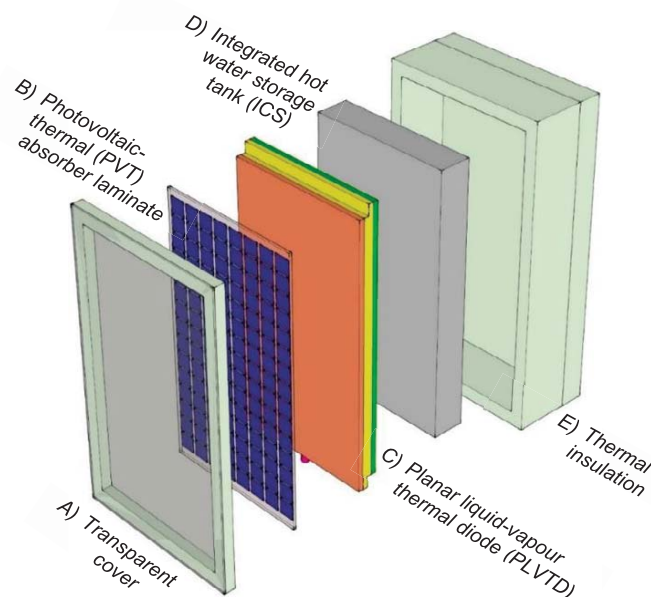


Figure 1 – General arrangement of a PVT-PLVTD-ICS solar collector

2. Theory

Heat collection (η_{col}) and retention (η_{ret}) efficiencies and system heat loss coefficients (U_{sys}) for ICSSWH collectors can be defined (after Smyth et al., 1999 and Faiman et al. 2001) using Equations 1 to 3 based on total heat capacity (C_{tot}), water storage tank temperatures ($T_{3(t)}$) at dawn ($t=t_0$), dusk ($t=t_0+t_{\text{col}}$) and the subsequent dawn ($t=t_0+t_{\text{col}}+t_{\text{ret}}$), retention period average ambient temperatures (\bar{T}_a), collection period average

incident irradiance (\tilde{G}), and collector area (A). The overall diurnal efficiency ($\eta_{T+E,24}$) of a PVT-ICSSWH can be expressed in terms of the product of the collection and retention efficiencies plus the electrical efficiency, as per Equation 4, where instantaneous electrical power is determined from the product of current (I) and voltage (V) supplied to an electrical load. Diurnal thermal efficiency is a relative performance measure where $\eta_{T24}=1$ indicates perfect solar thermal collection and retention without losses and $\eta_{T24}=0$ implies either no heat collection, total overnight heat loss, or both. Values of $0 < \eta_{T24} < 1$ indicate potential for useful net heat gain provided that Equation 5 is satisfied.

$$\eta_{col} = \frac{C_{tot}(T_3[t=t_0+t_{col}] - T_3[t=t_0])}{\tilde{G}A} \quad (\text{eq. 1})$$

$$\eta_{ret} = \frac{T_3[t=t_0+t_{col}+t_{ret}] - \bar{T}_a}{T_3[t=t_0+t_{col}] - \bar{T}_a[t=t_0+t_{col}]} \quad (\text{eq. 2})$$

$$U_L = \frac{C_{tot}}{A \cdot t_{ret}} \ln \frac{1}{\eta_{ret}} \quad (\text{eq. 3})$$

$$\eta_{T+E,24} = \eta_{T24} + \eta_{E24} = \eta_{col}\eta_{ret} + \frac{\int_{t_0}^{t_0+t_{col}+t_{ret}} IV}{\tilde{G}A} \quad (\text{eq. 4})$$

$$\eta_{T24}\tilde{G}A + C_{tot}(\overline{T_3[t=t_0]} - \bar{T}_a)(\eta_{ret} - 1) > 0 \quad (\text{eq. 5})$$

Equations 6, 7 & 8 describe how ICSSWH collector instantaneous thermal efficiencies ($\eta_{T,col}$ during collection and $\eta_{T,ret}$ during retention periods) are determined by the solar power input (GA); transmission-absorption product ($\tau\alpha$); and the absorber (T_1), tank (T_3), and ambient (T_a) temperatures. These equations were derived by Pugsley (2017) based on a lumped parameter model which considers the thermal resistances associated with absorber-to-tank heat transfer ($R_{123}=R_{12}+R_{23}$), absorber-to-ambient heat loss (R_{1a}) and insulated tank envelope heat losses (R_{3ia}). Conductance $U_{12}=1/(A \cdot R_{12})$ describes diode behaviour and conductance $U_{23}=1/(A \cdot R_{23})$ represents water storage tank natural convection. Conductance $U_{1a}=1/(A \cdot R_{1a})$ represents combined radiative heat transfer and air mass natural convection effects occurring between the absorber and its transparent insulating cover, and also between the transparent cover and the external environment.

$$\eta_{T(col)} = \frac{(T_1 - T_3)/R_{123} - (T_3 - T_a)/R_{3ia}}{GA} \quad (\text{eq. 6})$$

$$\eta_{T(ret)} = \frac{C_{tot}(T_3 - T_a) + t_{ret}[(T_3 - T_a)/R_{123} - (T_3 - T_a)/R_{3ia}]}{C_{tot}(T_3 - T_a)} \quad (\text{eq. 7})$$

$$T_1 = \frac{R_{123}T_a + R_{1a}T_3}{R_{1a} + R_{123}} = \frac{R_{123}R_{1a}\tau\alpha GA + T_a R_{123} + T_3 R_{1a}}{R_{123} + R_{1a}} \quad (\text{eq. 8})$$

The theoretical relationship between diurnal thermal efficiency and water storage tank temperature is shown on Figure 2 for various diode performance scenarios. The analysis was undertaken by calculating the product of Equations 6 & 7 for nominal $G=500 \text{ Wm}^{-2}$, $t_{ret}=64800\text{s}$, $A=1\text{m}^2$, $\tau\alpha=0.81$, and $U_{3ia}=0.3 \text{ Wm}^{-2}\text{K}^{-1}$ using temperature dependent values of $3 < U_{1a} < 5 \text{ Wm}^{-2}\text{K}^{-1}$ and $100 < U_{23} < 1000 \text{ Wm}^{-2}\text{K}^{-1}$ which were evaluated using well known Rayleigh-Nusselt convection and Stefan-Boltzmann radiation heat transfer equations (Cengel, 2006). Equilibrium absorber temperatures (T_1) during collection periods were found by iteration to satisfy Equation 8. Temperature dependent collection/forward mode (U_{12f}) and retention/reverse mode (U_{12r}) diode conductances (see legend of Figure 1) were determined from experimental and theoretical work on PLVTDs by Pugsley (2017). Figure 2 indicates that the benchmark single glazed collector with no thermal diode (A) achieves $\eta_{T24}=37\%$ when the tank temperature is low (close to a zero daytime heat loss operating condition $[T_3 - T_a]/G=0$) and a nominal mild-climate night-time heat loss condition $[T_3 - T_a]=15^\circ\text{C}$ occurs. Performance decreases with increasing tank temperature such that $\eta_{T24}=9\%$ occurs for a hypothetical daytime condition of $[T_3 - T_a]/G=0.1\text{m}^2\text{KW}^{-1}$ followed by a cold night-time period where $[T_3 - T_a]=70^\circ\text{C}$. Addition of a basic thermal diode (B) yields a 1.5 times improvement in low temperature performance ($\eta_{T24}=56\%$) and doubles the high

temperature performance ($\eta_{T24}=18\%$). Use of a high performance diode (E) yield a 1.7 times improvement in low temperature performance ($\eta_{T24}=61\%$) and a 2.3 times improvement in high temperature performance ($\eta_{T24}=21\%$). These improvements in diurnal thermal efficiency are primarily due to improved (reduced) reverse mode conductance (D) which improves heat retention efficiency, rather than increased forward mode conductance (C) which has only a limited effect on collection efficiency.

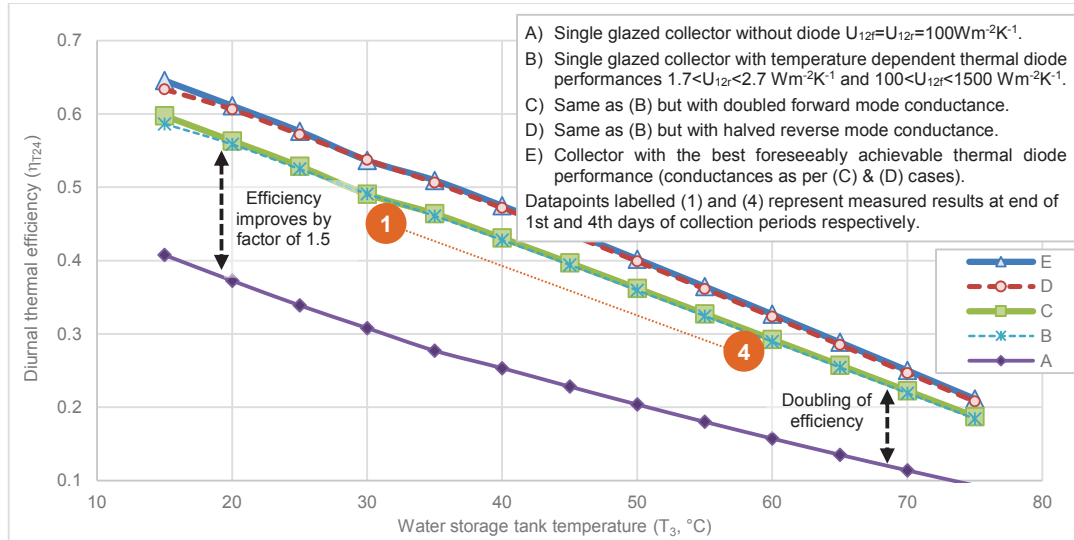


Figure 2 – Effect of diode thermal conductance upon diurnal thermal efficiency of an ICS collector

3. Experimental methodology

A prototype taking the form shown in Figure 1 was fabricated. The thermal diode and water storage tank (see Figures 3, 5a and Table 1) were formed of folded and welded stainless steel sheet supported internally by an array of stainless steel tubular struts. A welded vacuum flange was added to enable working fluid addition and chamber evacuation through the top of the unit. A stainless steel manifold plate was welded to the bottom to enable connection of the evaporator wetting mechanism (Intellectual Property considerations prevent us from describing this in detail). The completed steelwork was tested for storage tank water leaks and diode vacuum leaks (Figure 5c). The PVT absorber was then formed on the diode's absorber-evaporator plate (see Figure 4, 5b and Table 1) using matt black paint, double-sided adhesive foam tape, quartered mono-crystalline silicon cells, transparent silicone resin, and transparent Perspex cover plates. The series-parallel interconnected PV cells were connected to a 5.2Ω resistive load bank. Prior to resin casting, T-Type Thermocouples (TTC) producing measurement results with standard uncertainty $\pm 0.3^\circ\text{C}$ in the range 0 to 100°C were attached to the rear of four PV cells (T_0) and to the absorber-evaporator plate surface at twelve locations (T_1). Fourteen TTCs were bonded to the condenser-tank plate surface (T_2) within the tank, along with five TTCs mounted along a thin vertical wire suspended in the water (T_3). Thirteen TTCs were bonded to outer surfaces of diode sidewalls (T_4) and sump (T_5) and three were placed in shaded and sheltered locations to measure ambient temperatures (T_a). All TTCs were connected to a Delta-T Devices DL2e datalogger sampling continuously and recording average temperatures at 5 minute intervals. Thermally insulating polystyrene foam was applied to the rear and sides of the prototype along with a transparent Perspex sheet to cover the absorber.

The diode was filled with 1 kg of working fluid and evacuated to ~ 2.5 kPa (close to saturated vapour pressure of water at 20°C) using an Edwards XDS5 scroll vacuum pump and a Druck DPI-104 vacuum pressure gauge. The completed prototype was initially tested for heat retention performance by filling the tank with hot water at $T_3=70^\circ\text{C}$ and measuring the rate of temperature reduction overnight. The test was repeated with additional polystyrene insulation over the absorber which enabled tank back and sides heat loss to be quantified as $U_{3ia}=1.1$ $\text{Wm}^{-2}\text{K}^{-1}$ at 70°C and $U_{3ia}=0.6$ $\text{Wm}^{-2}\text{K}^{-1}$ at 40°C (estimated standard uncertainty ± 0.2 $\text{Wm}^{-2}\text{K}^{-1}$). The tank was then drained and the prototype moved to Ulster University's solar simulator facility (Zacharopoulos et al., 2009). The main tests under the simulator followed similar methodologies and procedures to those used

by Quinlan (2010) and Smyth et al. (2015) although the test duration was significantly extended to account for the relatively high volume-to-absorber area ratio (100 L/m²) of the prototype:

1. Adjust solar simulator for irradiance of $G \approx 600 \text{ Wm}^{-2}$ by taking readings at locations across the entire absorber surface with a Kipp and Zonen CMP6 pyrometer.
2. Fill tank with cold mains water. Activate evaporator wetting mechanism and remove temporary shading from absorber.
3. Disconnect resistive load bank from PV terminals. Measure characteristic IV performance curve of PV module using Daystar DS1000 tracer. Reconnect resistive load bank.
4. Repeat Step 3 after 2, 4 & 6 hours of illumination then immediately switch off the solar simulator and leave to cool overnight.
5. Repeat Steps 1 to 5 on subsequent days until no significant day-to-day change in daily minimum and maximum tank temperature occurs.

The procedure featured 6 hour collection periods ($t_{\text{col}}=21600\text{s}$) and 18 hour retention periods ($t_{\text{ret}}=64800\text{s}$) repeated over four consecutive 24 hour periods. Recorded temperature time history results were error-checked and spatially averaged to determine overall average values of T_0 , T_1 , T_2 , T_3 , T_4 , T_S and T_a . These results were then used to determine heat transfer rates, corresponding thermal conductances and subsequently to determine thermal efficiencies according to Equations 1, 2 & 3. Photovoltaic performance results (V_{oc} , I_{sc} , V_{mpp} , I_{mpp} , Q_{Empp} and FF) were produced directly by the Daystar DS1000 along with characteristics IV curves.

Table 1 – Specifications of the prototype

Parameter	Value		Basis / Reason
Tank and diode envelope and structure construction material	Stainless steel		High strength, low vacuum outgassing, relatively low thermal conductivity and emittance.
Diode cavity depth	$x = x_w = x_s$	mm 70	Optimum value for compromise between forward and reverse mode performance.
Absorber-evaporator & condenser-tank plates height and width	z	mm 1400	Slender cavity aspect ratio ($z/x=20$) and modest plate aspect ratio ($y/z=0.5$) to minimise reverse mode vapour convection and optimise high temperature liquid-vapour-liquid conductance.
	y	mm 700	
Plate thickness	x_1	mm 1.2	Chosen for compromise between structural integrity, cost and weight, whilst minimising number of struts.
Sidewall thickness	z_w	mm 0.9	Chosen for compromise ($z_w \approx 0.1x_w$) between structural integrity and minimal sidewall thermal conductance, rounded up to nearest available gauge.
Centre-centre spacing of struts	d_{ss}	mm 70	Chosen to be similar to cavity depth and strut length
Strut tube diameter	d_s	mm 8	Compromise between structural integrity and minimising structure thermal conductance.
Strut tube wall thickness	d_{sw}	mm 0.9	
Mass of diode and tank	m_{1234s}	kg 8.1	Construction material and liquid masses determined from dimensions given above together with densities for stainless steel and liquid water (7900 and 1000 kg·m ⁻³ respectively).
Mass of diode working fluid	m_{Lv}	kg 1.0	
Mass of water stored in tank	m_{3L}	kg 100	
Total mass	m_{tot}	kg 131	
Photovoltaic cells	Monocrystalline silicon		Bosch M-2BB high efficiency pseudo-square cells.
Number of cells	N	8 x 15 = 120	Formed of 30 whole cells cut into quarters.
Cell size	A_0	m ² 78 x 78	Quarter of a standard 6x6 inch whole cell.
Wiring scheme & voltage	V_{oc}	V 23	Series-parallel configuration of 8 cells per string with 3 strings connected in parallel to form each bus ($V_{\text{oc}} \approx 4.5\text{V}$). Module consists 5 buses in series.
Cell packing factor	PF	% 72%	Thermo-electrical efficiency compromise. Absorber surface behind PV cells was painted matt black.
Encapsulation	Silicone resin PlatSil® 71-20		Low cost, highly transparent, pourable resin, resists UV degradation and high temperatures.
Bonded cover (on top of encapsulation)	Clear Perspex		Low cost, robust, resistant to UV degradation.
Thermal cover (for air gap)			
Thickness of encapsulation and bonded cover ($x_{15}=x_{01}+x_{05}$)	x_{15}	mm 5	Perspex sheet minimum 2mm available thickness. Resin thickness determined by pour viscosity and adhesive foam tape spacer thickness.
	x_{01}	mm 1.5	
	x_{05}	mm 3.5	
Thickness of thermal cover	x_6	mm 2	
Thickness of air gap	x_{56}	mm 35	

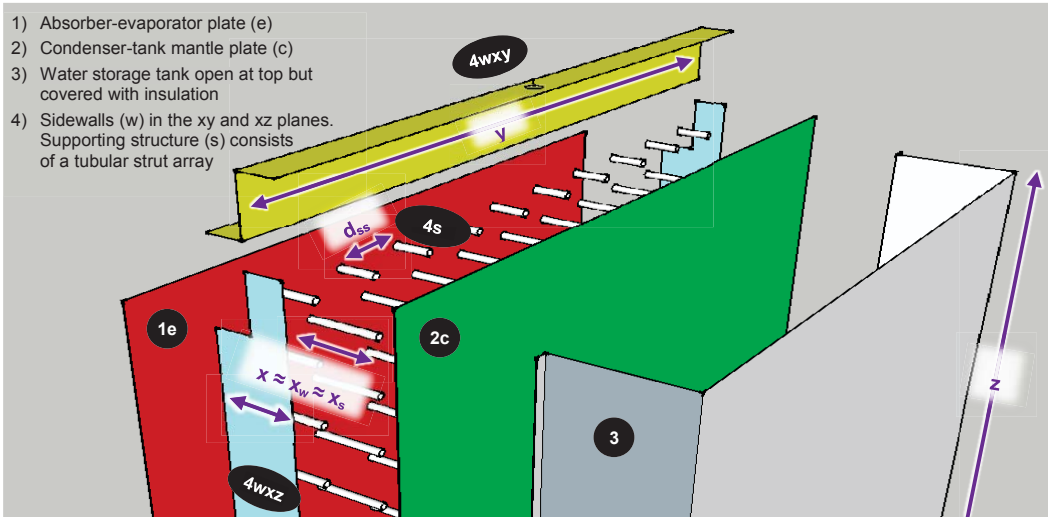


Figure 3 – Construction of the thermal diode and tank

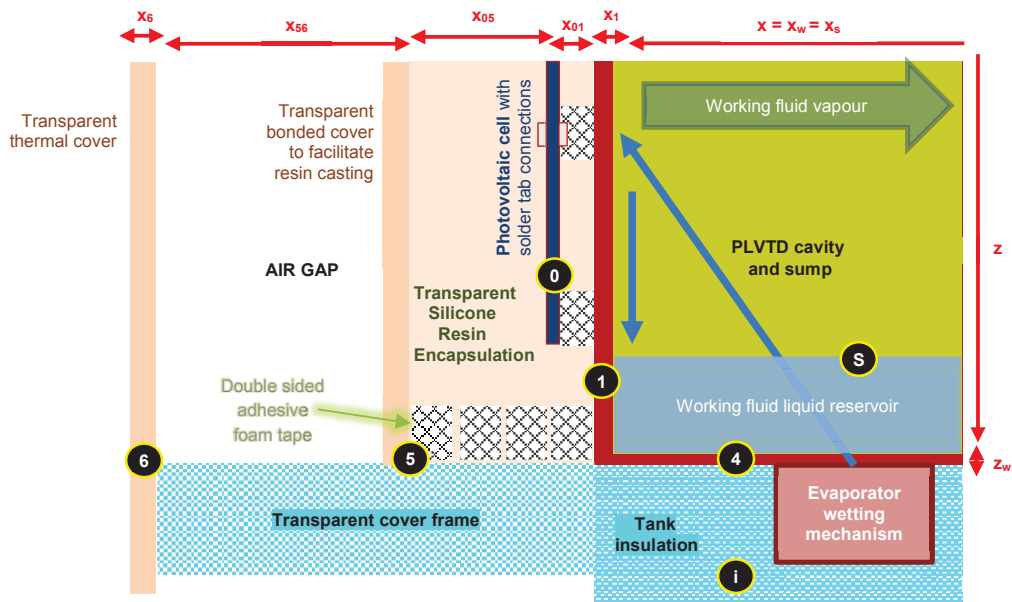


Figure 4 – Cross section through absorber laminate and transparent covers (scale exaggerated)

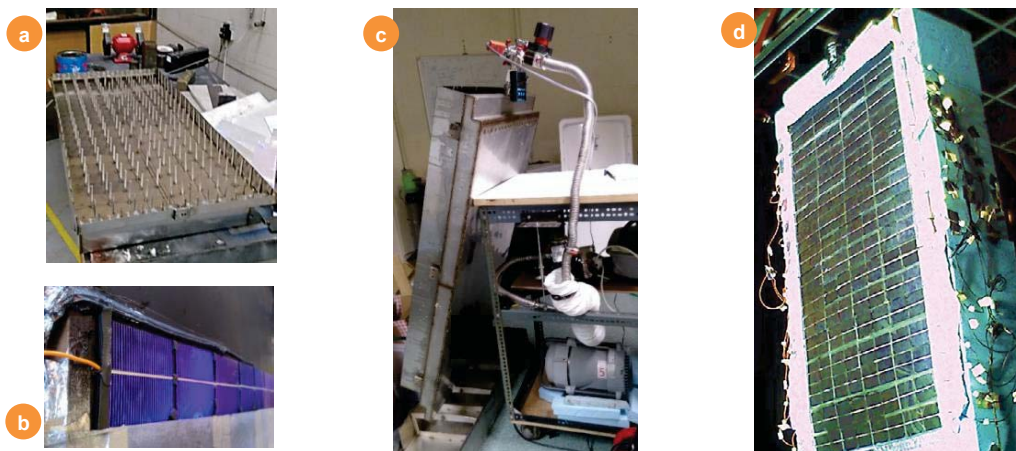


Figure 5 – Photographs showing steelwork & PVT absorber fabrication (a & b), leak testing (c), solar simulator testing (d)

4. Results and discussion

Recorded temperature time histories are shown on Figure 6. Tests began with $T_3=17^\circ\text{C}$ tank temperature which rose by 21°C during the first collection period and fell by only 5°C during the first overnight retention period. The final (fourth) day of collection saw only 11°C gain before reaching $T_3=57^\circ\text{C}$. This gain was almost entirely lost during the fourth overnight retention period. Ambient temperatures were $T_a\approx 25\pm 5^\circ\text{C}$ during collection and $T_a\approx 20\pm 3^\circ\text{C}$ during retention periods. Instantaneous thermal and electrical efficiencies were 60% and 9% respectively at zero increased temperature ($T_3-T_a=0$), dropping to 40% and 6% respectively at a nominal intended operating condition $\sim 0.05\text{ m}^2\text{KW}^{-1}$ corresponding to $T_3\approx 50^\circ\text{C}$, $T_a\approx 20^\circ\text{C}$ and $G\approx 600\text{ Wm}^{-2}$.

Dependence of the instantaneous thermal and electrical efficiencies upon the water storage tank temperature are shown on Figure 7 to be reasonably linear. Scatter in the data is primarily a manifestation of absorber heat-up and cool-down transients which occurred at the beginning and end of each collection period due to the diode's significant thermal mass (sensible and latent). These transients were observed to affect PV module efficiency as well as absorber heat loss and diode thermal conductance. Electrical efficiencies recorded at the start of each day of testing, immediately after illumination whilst the absorber was cool ($T_1\leq T_a+15^\circ\text{C}$), were consistently higher than values recorded at other times when the absorber was warmer (typically $T_1\approx T_3+8^\circ\text{C}$). Recorded collection efficiencies each day were $\eta_{\text{col}}=65, 46, 44$ and 40% . Overnight retention efficiency was $\eta_{\text{ret}}=71\%$ with corresponding overall loss coefficient $U_{\text{sys}}=0.85\text{ Wm}^{-2}\text{K}^{-1}$ (estimated standard uncertainty $\pm 0.1\text{ Wm}^{-2}\text{K}^{-1}$). With reference back to Figure 2, diurnal thermal efficiencies recorded for Days 1 and 4 were slightly lower than predicted because of poorer than expected forward mode diode thermal conductances, but as predicted, were significantly higher than for the benchmark ICSSWH without thermal diode.

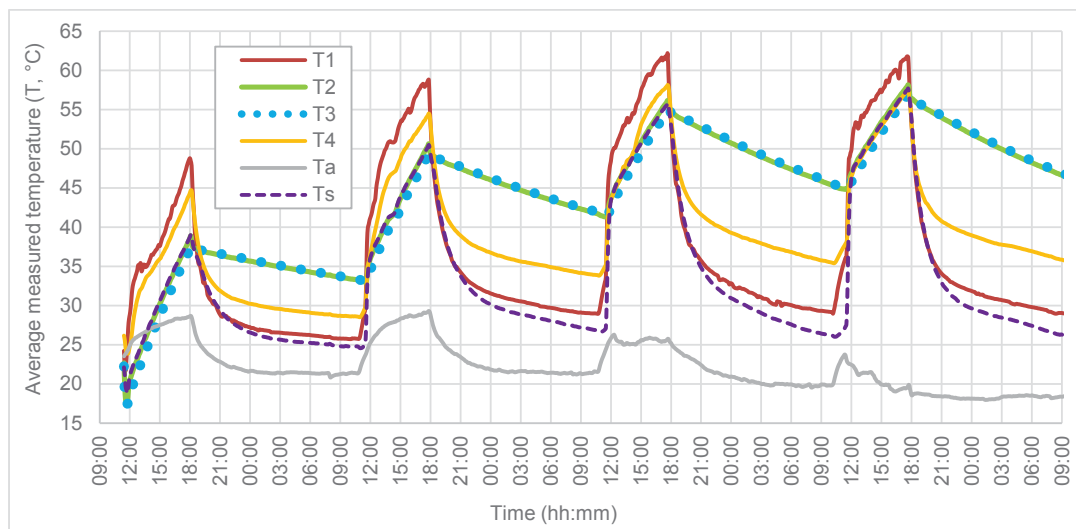


Figure 6 – Recorded temperature time history

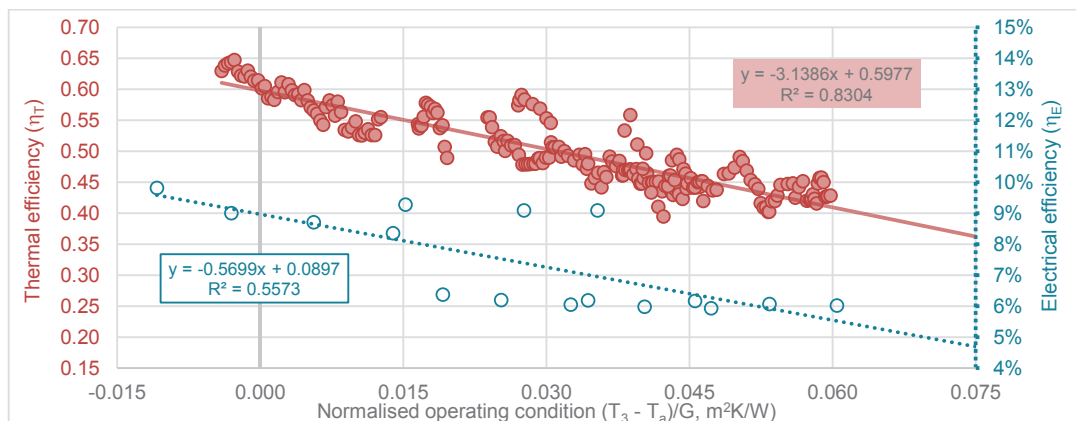


Figure 7 – Instantaneous thermal and electrical efficiencies

Table 2 – Comparison of measured photovoltaic characteristics against manufacturers data

Characteristic	Manufacturer's data for single cell	Expected module performance	Actual module performance (with encapsulation and bonded cover*)
Maximum Power at STC (Q_{Empp} , W)	4.24	127	83*
Cell efficiency at STC ($\eta_{E(0.mpp)}$, %)	17.6%	17.6%	11.4%*
Module efficiency at STC ($\eta_{E(ec.mpp)}$, %)	-	13.7%	8.9%*
Open Circuit Voltage at STC (V_{oc} , V)	0.616	24.6	24.1*
Short Circuit Current at STC (I_{sc} , A)	8.9	6.7	4.8*
Fill Factor (FF, %)	78% ($G=1000 \text{ Wm}^{-2}$)		74% ($G=610$)
Voltage temperature coefficient ($\%V_{oc}/K$)	-0.37%		-0.37%
Current temperature coefficient ($\%I_{sc}/K$)	+0.03%		-0.19%
Maximum power temperature coefficient ($\%Q_{Empp}/K$)	-0.49%		-0.55%

* Photovoltaic performance was measured under a variety of irradiances ($G=350, 610$ and 870 Wm^{-2}) and a variety of temperatures, with the transparent thermally insulating cover removed. No measurements were made under strict Standard Test Conditions (STC) of $G=1000 \text{ Wm}^{-2}$ and $T_0=25^\circ\text{C}$ but the data obtained enabled STC open circuit voltage, short circuit current, maximum power, and efficiency values to be determined by extrapolation.

Forward mode diode thermal conductances were typically an order of magnitude lower (worse) than expected, but the predicted temperature dependence was clearly apparent with $U_{12f}=30 \text{ Wm}^{-2}\text{K}^{-1}$ occurring when the water storage tank was cold, rising to $U_{12f}=70 \text{ Wm}^{-2}\text{K}^{-1}$ when it was hot. Considerable spatial variation in absorber surface temperature was observed during collection periods. Detailed investigations (Pugsley, 2017) found that the relatively poor forward mode diode performances were primarily caused by poor evaporator wetting. Wetted parts of the absorber-evaporator plate were typically observed to be $T_1 \approx T_3 + 3^\circ\text{C}$ (as expected) whereas “dry spots” were markedly hotter (typically $T_1 \approx T_3 + 30^\circ\text{C}$) due to the lack of evaporative cooling.

Reverse mode diode thermal conductances were generally slightly lower (better) than predicted being typically $U_{12r}=1.7 \text{ Wm}^{-2}\text{K}^{-1}$. Other measured forward and reverse mode conductances were broadly as expected, being typically $U_{23f}=250 \text{ Wm}^{-2}\text{K}^{-1}$ and $U_{23r}=100 \text{ Wm}^{-2}\text{K}^{-1}$ within the water storage tank; $U_{1af}=3.5 \text{ Wm}^{-2}\text{K}^{-1}$ and $U_{1ar}=2.5 \text{ Wm}^{-2}\text{K}^{-1}$ between the absorber and ambient; and $U_{01} \approx 100 \text{ Wm}^{-2}\text{K}^{-1}$ through the silicone resin encapsulation bonding the PV cells to the absorber. Water storage tank thermal conductances (U_{23}) and absorber heat loss thermal conductances (U_{1a}) were higher during forward mode than during reverse mode because heat fluxes and plate temperatures were inherently higher during solar collection periods than they were during retention periods. The estimated combined standard uncertainty of the aforementioned thermal conductance results is about $\pm 30\%$.

Measured PVT absorber electrical performance is summarised in Table 2. Short circuit current (I_{sc}), maximum electrical power yield (Q_{Empp}), and efficiency (η_E) were all 30-35% lower than expected, despite results of pilot tests on individual cells being broadly consistent with manufacturer's data. Measured temperature coefficients for whole-module power ($\%Q_{Empp}/K$) and short circuit current ($\%I_{sc}/K$) were also notably worse than manufacturers single-cell values. Analysis described in detail by Pugsley (2017) identifies several potential causes for the poor current yield, of which the most significant is accidental cell damage (to approximately a quarter of all cells) which occurred during absorber laminate fabrication. Cell fractures function as electrical resistances which limit (or completely eliminate) the flow of current between broken cell fragments and the main body of each cell. Detailed inspection of the test data indicated an abrupt worsening of current loss above $T_1 \approx 45^\circ\text{C}$ which is thought to be due to absorber thermal expansion widening fractures and increasing associated electrical resistances. In addition to cell fractures, the following effects are also likely to have contributed to current and power loss:

- Uneven distribution of light emitted by the solar simulator ($\pm 10\%$ for high irradiance tests) causing some cells to produce less current than others, thereby limiting overall string currents.
- Optical losses associated with delamination of the encapsulation material, which was particularly notable in locations where the aforementioned hot “dry spots” occurred.

- Non-uniform absorber surface temperatures which caused voltage mismatches between parallel connected cell strings. The hot “dry-spots” on the absorber-evaporator plate were observed to be most pronounced when the absorber and/or the tank were cool and irradiance levels were high.

Despite the lower than expected diode forward mode thermal conductance and underperforming PV cell array, the solar thermal collection and retention performances of the prototype are amongst the highest reported anywhere in the ICSSWH literature (see Sections 1.1 & 1.2) providing strong evidence that incorporation of a planar liquid-vapour thermal diode yields a significant performance benefit. This finding is echoed in the comparative study reported by Smyth et al. (2016).

5. Supporting analyses

In addition to the work presented above, a considerable amount of additional experimental and theoretical work and supporting analyses have been undertaken as part of this study (Pugsley, 2017) and will be the subject of several anticipated future papers:

- **Theoretical behavior of PLVTDs:** A lumped parameter thermal resistance model enabling prediction of PLVTD heat transfer was developed and experimentally validated. The model was used to undertake a parametric study examining PLVTD behaviour under different heat flux, temperature, and tilt angle conditions. The model was also used to optimize the PLVTD design in respect of material choices; working fluid types and flow rates; dimensions and aspect ratios.
- **Economics:** Materials for the prototype cost £600/m². This cost is comparable to typical retail prices of flat plate and evacuated tube solar thermal collectors and is considerably less than most commercially available packaged solar water heaters. Estimated labour costs were very high (£2000/m²) due to reliance on labour intensive processes required to fabricate a one-off prototype. Significant value engineering and manufacturing process optimization would be required to make the device commercially viable and mass-manufacturable.
- **Building integration:** Feasibility studies were undertaken to examine how the PVT-PLVTD-ICSSWH concept might be integrated into different building façade constructions, allowing for key considerations such as structural loading and aesthetic/dimensional compatibility with building structural grids. The compatibility of the device in respect of integration into building electrical and heating services systems was also examined.

6. Conclusions

A flat panel Integrated Collector-Storage Solar Water Heater (ICSSWH) incorporating a photovoltaic-thermal (PVT) absorber and a Planar Liquid-Vapour Thermal Diode (PLVTD) was fabricated and tested under Ulster University’s solar simulator. The collector primarily consisted of a sealed evacuated thermal diode and a vented water storage tank, both constructed of welded and folded stainless steel sheet. The absorber-evaporator plate was painted black and 120 quartered monocrystalline photovoltaic cells were encapsulated and bonded to it using clear silicone resin. Cells were interconnected in a series-parallel configuration to produce an open circuit voltage of ~24V. The absorber was insulated by a transparent Perspex cover and air gap. Collector rear and sides were insulated by polystyrene foam.

Test results indicate instantaneous thermal and electrical efficiencies of 60% and 9% respectively under zero temperature rise conditions (when stored water temperature equals ambient temperature), dropping to 40% and 6% at the nominal intended operating condition (~0.05 m²KW⁻¹ at 20°C ambient). Water temperature of 57°C was achieved in the 100 Litre tank after four days of consecutive 6-hour collection periods (G=610Wm⁻² irradiance on ~0.95m² absorber) and 18 hour retention periods (T_a≈20±3°C). Daily solar thermal collection and overnight heat retention efficiencies of η_{col}=65% and η_{ret}=71% were achieved, corresponding to diurnal thermal efficiency of up to η_{T+E,24}=46% and an overall heat loss coefficient of U_{sys}=0.85 Wm⁻²K⁻¹. Measured thermal diode conductances were typically U_{12f}=45 Wm⁻²K⁻¹ in forward mode (during collection periods) and U_{12r}=1.7 Wm⁻²K⁻¹ in reverse mode (during retention periods). These thermal performances are comparable to

the best ICSSWH collector designs encountered in the literature. Photovoltaic performance was lower than expected, primarily owing to accidental damage to PV cells during fabrication, together with temperature and irradiance non-uniformities, and optical losses associated with delaminated encapsulation.

Overall, the work demonstrates that ICSSWH, PVT and PLVTD concepts can be successfully combined to create a scalable flat panel solar collector suitable for integration within a multifunction building facade. Changes to fabrication procedures could reduce or eliminate breakage of PV cells. Improved evaporator wetting, reduced PV cell encapsulation thickness, and better bonding of PV cells to the absorber plate would all increase conductance during collection periods yielding improvements to both thermal and electrical efficiencies. It is recommended that further work focusses on implementing the aforementioned improvements and undertaking further studies to optimize the design for building façade and services systems integration.

7. Nomenclature

Meanings of symbols:

A	Area
α	Solar absorption coefficient
C	Heat capacity
d	Distance or dimension
FF	Fill Factor of current-voltage characteristic curve
G	Irradiance or solar power flux
η	Efficiency with subscripts E, T, col, ret, 24, 0, ec, mpp
I	Current (subscript _{sc} for “short circuit”)
m	Mass with subscripts L _v , 3L, 1234s, tot
N	Number of PV cells
PF	Packing Factor of PV cells
Q	Power (Q_{Empp} = electrical at maximum power point)
R	Thermal resistance with subscripts 12, 123, 1a, 23, 3ia
t	Time or duration with subscripts 0, col, ret
T	Temperature with subscripts 0, 1, 2, 3, 4, a, s
τ	Optical transmittance
U	Thermal conductance with subscripts 12f, U12r, 23f, 23r, 1af, 1ar, 3ia, sys
V	Voltage (subscript _{oc} for “open circuit”)
x	Distance parallel to collector depth with subscripts 01, 05, 1, 15, 56, 6, s, w
y	Distance parallel to collector width
z	Distance parallel to collector height (subscript _w for “sidewall thickness”)

Meanings of subscripts:

a	Ambient
col	Collection
E	Electrical
f	Forward mode / collection periods
L _v	Diode working fluid at liquid-vapour saturation
r	Reverse mode / retention periods
ret	Retention period
s	Strut
S	Sump
sys	System heat loss coefficient
tot	Total
T	Thermal
0	Photovoltaic cells (T_0 , A_0) or Start of period (t_0)
1	Absorber-evaporator plate
2	Condenser-tank mantle plate
3	Water in storage tank
4	Diode sidewalls
5	Absorber laminate bonded cover plate surface
6	Transparent thermally insulating cover
12	Between Plates 1 and 2
123	Between absorber and bulk of stored water
1a	Between absorber and ambient
23	Between Plate 2 and bulk of stored water
24	Diurnal value over a 24 hour period
3ia	Between “3” and “a” via foam insulation
56	Air gap between absorber & transparent cover

8. References

- Aguilar, F., Aledo, S. Quiles, P., 2016. Experimental study of the solar photovoltaic contribution for the domestic hot water production with heat pumps in dwellings. *App. Therm. Eng.* 101, 379–89
- Besheer, A., Smyth, M., Zacharopoulos, A., Mondol, J., Pugsley, A. 2016. Review on recent approaches for hybrid PV/T solar technology. *Int. J. Energy Res.* DOI: 10.1002/er.3567
- Boreyko, J., Zhao, Y., Chen, C., 2011. Planar jumping-drop thermal diodes. *Appl. Phys. Lett.* 99, 234105
- Boreyko, J. and Chen, C., 2013. Vapor chambers with jumping-drop liquid return from superhydrophobic condensers. *Int. J. Heat & Mass Trans.* 61, 409–18
- Calise, F., d'Accadia, M., Figaj, R., Vanoli, L., 2016. A novel solar-assisted heat pump driven by photovoltaic/thermal collectors: Dynamic simulation and thermoeconomic optimization. *Energy* 95, 346-66
- Cengel, Y., Boles, M., 2006. *Thermodynamics an Engineering Approach*, 5th Edition. McGraw-Hill, New York.
- Chen, K., Chailapo, P., Chun, W., Kim, S., Lee, K., 1998. Dynamic behavior of a bayonet-type thermal diode. *Sol. Energy* 64, 257–63
- De Beijer, H., 1998. Product development in solar water heating. *Ren. Energy* 5, 201-4
- Dupeyrat, P., Menezo, C., Rommel, M., Henning, H., 2011. Efficient single glazed flat plate photovoltaic-thermal hybrid collector for domestic hot water systems. *Sol. Energy* 85, 1457-68
- Faiman, D., Hazan, H., Laufer, I., 2001. Reducing the Heat Loss at Night from Solar Water Heaters of the Integrated Collector-Storage Variety. *Sol. Energy*, 71, 87-93

- Fang, Y., Hyde, T., Arya, F., Hewitt, N., Eames, P., Norton, B., Miller, S., 2014. Indium alloy-sealed vacuum glazing development and context. *Renewable and Sustainable Energy Reviews* 37 (2014) 480–501.
- Fang, X., Xia, L., 2010. Heating performance investigation of a bidirectional partition fluid thermal diode. *Ren. Energy* 35, 679–84
- Good, C., Andresen, I., Hestnes, A., 2015. Solar energy for net zero energy buildings – A comparison between solar thermal, PV and photovoltaic–thermal (PV/T) systems. *Sol. Energy* 122, 986–96
- Kolodziej, A., Jaroszynski, M., 1997. Performance of liquid convective diodes. *Sol. Energy* 61, 321–6
- Michael, J., Iniyani, S., Goic, R., 2015. Flat plate solar photovoltaic–thermal (PV/T) systems. *Ren. & Sus. Energy Rev.* 51, 62–88
- Mohamad, A., 1997. Integrated Solar Collector-Storage Tank System with Thermal Diode. *Sol. Energy*, 61, 211–8.
- Pugsley, A., 2017. Theoretical and experimental analysis of a novel flat photovoltaic-thermal solar water heater with integrated energy storage via a Planar Liquid-Vapour Thermal Diode. Ulster University PhD Thesis. Available at: <<http://ethos.bl.uk/SearchResults.do>>
- Poppi, S., Bales, C., Haller, M., Heinz, A., 2016. Influence of boundary conditions and component size on electricity demand in solar thermal and heat pump combisystems. *App. Energy* 162, 1062–73
- Qu, M., Chen, J., Nie, L., Li, F., Yu, Q., Wang, T., 2016. Experimental study on the operating characteristics of a novel photovoltaic/thermal integrated dual-source heat pump water heating system. *App. Therm. Eng.* 94, 819–26.
- Quinlan, P., 2010. The Development of a Novel Integrated Collector Storage Solar Water Heater (ICSSWH) Using Phase Change Materials and Partial Evacuation. PhD Thesis, University of Ulster.
- Quinlan, P., Smyth, M., Griffiths, P., Conway, S. and Filippi, A., 2008. Novel Integrated Collector Storage Solar Water Heater Utilising Phase Change Materials. *Proceedings World Renewable Energy Conference*, 19-25 July 2008, Glasgow, UK.
- European Union (EU) Directive 2009/28/EC on the promotion of the use of energy from renewable sources and amending and subsequently repealing Directives 2001/77/EC and 2003/30/EC (Text with EEA relevance). *Official Journal of the European Union*.
- Rhee, J., Campbell, A., Mariadass, A., Morhous, B., 2010. Temperature stratification from thermal diodes in solar hot water storage tank. *Sol. Energy* 84, 507–511.
- Santbergen, R., Rindt, C., Zondag, H., Van Zolingen, R., 2010. Detailed analysis of the energy yield of systems with covered sheet-and-tube PVT collectors. *Sol. Energy* 84, 867–78.
- Singh, R., Lazarus, I., Souliotis, M., 2016. Recent developments in integrated collector storage (ICS) solar water heaters: A review. *Ren. & Sus. Energy Rev.* 54, 270–98.
- Smyth, M., 2015. A solar water heater. Patent WO2010052010.
- Smyth, M., Eames, P., Norton, B., 1999. A comparative performance rating for an integrated solar collector/storage vessel with inner sleeves to increase heat retention. *Sol. Energy* 66, 291–303.
- Smyth, M., Eames, P., Norton, B., 2006. Integrated Collector Storage Solar Water Heaters. *Ren. & Sus. Energy Rev.* 10(6), 503–38.
- Smyth, M., Besheer, A., Zacharopoulos, A., Mondol, J., Pugsley, A., Novaes, M., 2015. Experimental evaluation of a Hybrid Photovoltaic/Solar Thermal (HyPV/T) Façade Module. *Proceedings EURO ELECS Conference 21-23 July 2015, Guimarães, Portugal*.
- Smyth, M., Pugsley, A., Hanna, G., Zacharopoulos, A., Mondol, J., Besheer, A., 2016. Experimental performance comparison of a Hybrid Photovoltaic/Solar Thermal (HyPV/T) Façade Module with a flat ICSSWH module. *Proceedings BIREs 2017 Conference 6-10 March 2016, Dublin, Ireland*.
- Solaform, nd. SolaCatcher Innovative, cost effective solar water heating system. <http://solaform.com/> [accessed 2016-19-09].
- Sopian, K., Syahri, M., Abdullah, S., Othman, M., Yatim, B., 2004. Performance of a non-metallic unglazed solar water heater with integrated storage system. *Ren. Energy* 29, 1421–30.
- Souliotis, M., Quinlan, P., Smyth, M., Tripanagnostopoulos, Y., Zacharopoulos, A., Ramirez, M., Yianoulis, P., 2011. Heat retaining integrated collector storage solar water heater with asymmetric CPC reflector. *Sol. Energy* 85, 2474–87.
- Zacharopoulos, A., Mondol, J., Smyth, M., Hyde, T., O'Brien, V., 2009. State of the Art Solar Simulator with Flexible Mounting. *Proceedings ISES Solar World Congress*, 11-14 October 2009, Johannesburg, South Africa, pp 854–863.
- Zondag, H., 2008. Flat-plate PV–thermal collectors and systems: a review. *Ren. & Sus. Energy Rev.* 12, 891–959.