

Premetazoan Origin of the Hippo Signaling Pathway

Arnau Sebé-Pedrós,^{1,5} Yonggang Zheng,^{2,5} Iñaki Ruiz-Trillo,^{1,3,*} and Duoqia Pan^{2,4,*}

¹Institut de Biologia Evolutiva (UPF-CSIC), Passeig Marítim de la Barceloneta 37-49, 08003 Barcelona, Spain

²Department of Molecular Biology and Genetics, Johns Hopkins University School of Medicine, Baltimore, MD 21205, USA

³Institució Catalana per a la Recerca i Estudis Avançats (ICREA) and Universitat de Barcelona, Barcelona, Spain

⁴Howard Hughes Medical Institute

⁵These authors contributed equally to this work

*Correspondence: inaki.ruiz@icrea.es (I.R.-T.), djpan@jhmi.edu (D.P.)

DOI 10.1016/j.celrep.2011.11.004

SUMMARY

Nonaggregative multicellularity requires strict control of cell number. The Hippo signaling pathway coordinates cell proliferation and apoptosis and is a central regulator of organ size in animals. Recent studies have shown the presence of key members of the Hippo pathway in nonbilaterian animals, but failed to identify this pathway outside Metazoa. Through comparative analyses of recently sequenced holozoan genomes, we show that Hippo pathway components, such as the kinases Hippo and Warts, the coactivator Yorkie, and the transcription factor Scalloped, were already present in the unicellular ancestors of animals. Remarkably, functional analysis of Hippo components of the amoeboid holozoan *Capsaspora owczarzaki*, performed in *Drosophila melanogaster*, demonstrate that the growth-regulatory activity of the Hippo pathway is conserved in this unicellular lineage. Our findings show that the Hippo pathway evolved well before the origin of Metazoa and highlight the importance of Hippo signaling as a key developmental mechanism predating the origin of Metazoa.

INTRODUCTION

The emergence of multicellularity represents one of the most important transitions in animal evolution. Nonaggregative multicellularity requires strict control over cell differentiation, proliferation and survival and this is attained by sophisticated cell-cell communication systems. A startling revelation from decades of developmental genetic studies is that these cell communications are largely mediated by just a handful of signaling pathways in metazoans such as Notch, Wnt, TGF- β , Hedgehog, and receptor tyrosine kinase (RTK) (Pires-daSilva and Sommer, 2003). A long-standing question in evolutionary developmental biology concerns the genetic mechanisms underlying the transition from unicellular eukaryotes to metazoa, in particular the relationship between multicellularity and the evolutionary origin of the major metazoan signaling pathways (King et al., 2003; Adamska et al., 2007; King et al., 2008; Srivastava et al., 2010; Sebé-Pedrós et al., 2010). Comparative genomic analyses have so

far confirmed the absence of Notch, Wnt, TGF- β , and Hedgehog signaling in any unicellular organisms, supporting the view that these signaling pathways are metazoan synapomorphies (Pires-daSilva and Sommer, 2003). In contrast, the discovery of RTKs in the closest unicellular relatives of animals (choanoflagellates) suggests that RTKs may serve as preadaptations in the metazoans' unicellular ancestors for co-option into the multicellular lifestyle (King et al., 2003; Manning et al., 2008).

The most recent addition to the metazoan signaling "toolkit" is the Hippo signaling pathway. The Hippo pathway was first discovered in *Drosophila melanogaster* as a critical regulator of imaginal disc growth, and more recent studies have implicated a conserved function of this pathway in organ-size control in mammals (Zhao et al., 2010; Pan, 2010; Halder and Johnson, 2011; Zeng and Hong, 2008; Harvey and Tapon, 2007; Reddy and Irvine, 2008; Badouel et al., 2009). The core of the Hippo pathway is a functionally conserved kinase cascade leading from the Ste20-like kinase Hippo (Hpo) (Mst1/Mst2 in mammals) and the NDR family kinase Warts (Wts) (Lats1/Lats2 in mammals) to the transcription factor complex formed by the coactivator Yorkie (Yki) (YAP/TAZ in mammals) and its major DNA-binding partner Scalloped (Sd) (TEAD1/TEAD2/TEAD3/TEAD4 in mammals) (Figure 1A). The Sd-Yki transcription factor complex, in turn, regulates an array of target genes involved in cell proliferation and cell survival, such as the cell-death inhibitor *diap1*. Diverse upstream inputs into the core kinase cascade have been identified in *Drosophila*. These include an apical protein complex composed of the WW- and C2-domain-containing protein Kibra, and two FERM-domain containing proteins, Expanded (Ex) and Merlin (Mer); the Fat signaling module composed of the atypical cadherins Fat and its effectors, such as Four-jointed and Dachs; the apical-basal polarity regulators Crumbs (Crb), atypical Protein Kinase C (aPKC) and the WD40 scaffold protein Lethal giant larvae (Lg) (Figure 1A). With the exception of Kibra and Mer, these upstream inputs have not been functionally linked to Hippo signaling in mammals (Zhao et al., 2010; Pan, 2010; Halder and Johnson, 2011; Zeng and Hong, 2008; Harvey and Tapon, 2007; Reddy and Irvine, 2008; Badouel et al., 2009).

Despite its essential role in animal development, the evolutionary history of the Hippo signaling pathway has been unresolved. Two recent comparative analyses reported key components of the pathway in nonbilaterian animals, but failed to identify any of these components outside Metazoa (Srivastava et al., 2010; Hilman and Gat, 2011). These two analyses

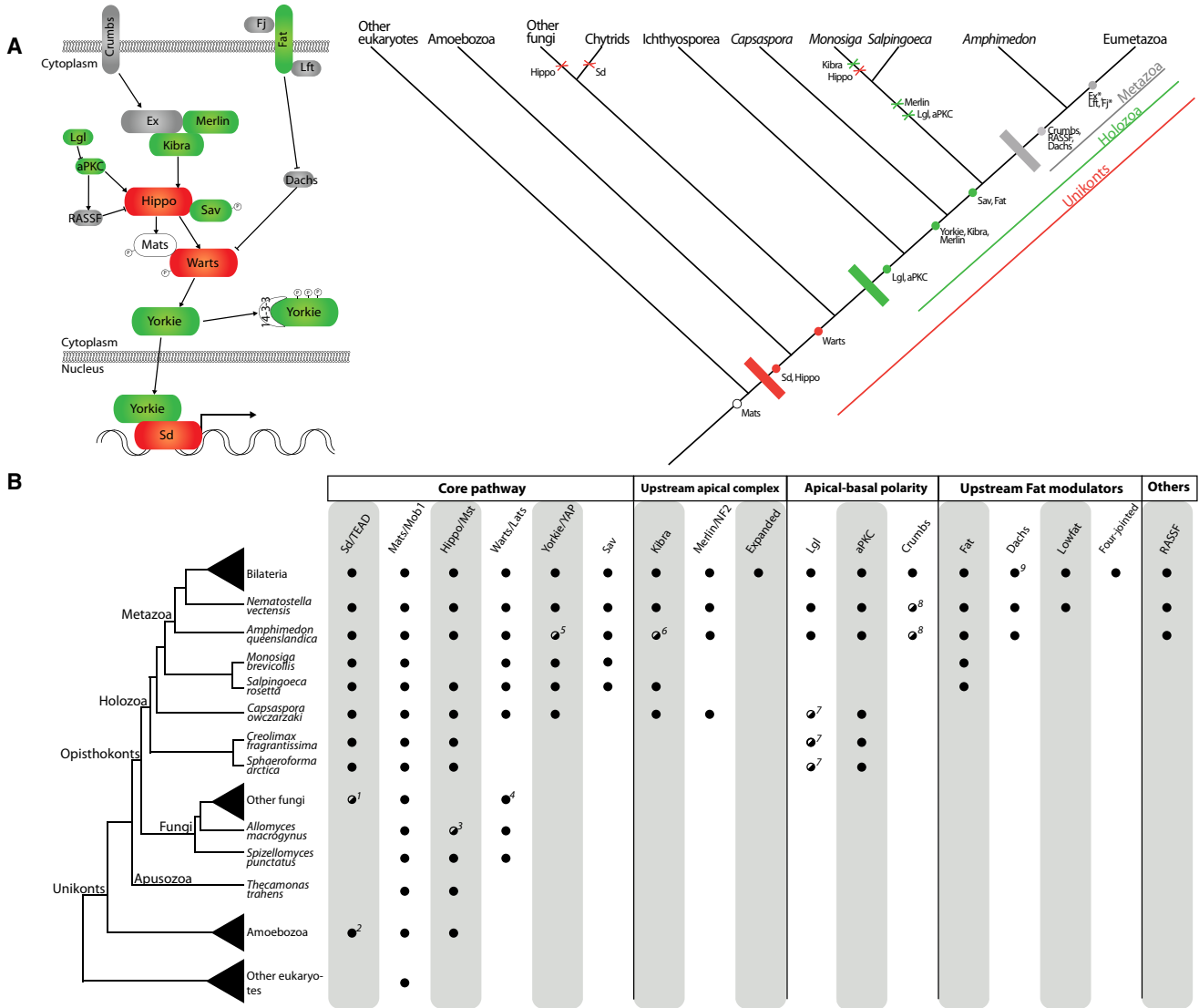


Figure 1. Evolution of the Hippo Signaling Pathway

(A) Schematic representation of the Hippo pathway evolution. The canonical metazoan Hippo pathway is shown on the left. The colors correspond to the three main steps in the evolution of the pathway, as shown in the cladogram (white, eukaryotes; red, unikonts; green, Holozoa; gray, Metazoa). Dots indicate origin and crosses indicate losses. Asterisks in Expanded (Ex) and Four-jointed (Fj) indicate that these proteins are exclusive to Bilateria.

(B) Schematic representation of the eukaryotic tree of life showing the distribution of the different components of the Hippo pathway. A black dot indicates the presence of clear orthologs, while a striped white-black dot indicates the presence of putative or degenerate orthologs. Absence of a dot indicates that an ortholog is lacking in that taxon. The taxon sampling for Bilateria includes *Homo sapiens*, *Drosophila melanogaster*, *Daphnia pulex* and *Capitella teleta*; other fungi includes the Ascomycota *Neurospora crassa* and the Basidiomycota *Ustilago maydis*; Amoebzoa includes *Acanthamoeba castellanii* and *Dictyostelium discoideum*; other eukaryotes includes *Arabidopsis thaliana*, *Chlamydomonas reinhardtii*, *Naegleria gruberi*, *Trichomonas vaginalis*, *Thalassiosira pseudonana*, and *Tetrahymena thermophila*. Footnotes are as follows: ¹ Fungi Sd orthologs do not have the C-terminal Y460 residue. ² Sd/TEAD is present in the amoebzoan *A. castellanii* (whose ortholog includes the C-terminal Y460 residue), but not in *D. discoideum*. ³ *A. macrognus* Hippo ortholog does not contain the SARAH domain. ⁴ *N. crassa* does not encode any ortholog of Warts/Lats, although other Ascomycota such as *Schizosaccharomyces pombe* and *Aspogillus niger* do encode this gene. ⁵ Putative *A. queenslandica* Yorkie ortholog contains just one, instead of two, WW protein domains. ⁶ Putative *A. queenslandica* Kibra ortholog contains an extra N-terminal PDZ domain. ⁷ *C. owczarzaki*, *C. fragrantissima* and *S. arctica* have proteins with the LLGL protein domain that in phylogenetic analysis appear as sister-group to a clade of the LLGL-containing Tomosyn and Lgl proteins. ⁸ Protein domain architecture is aberrant compared to bilaterian orthologs. ⁹ Absent in *H. sapiens*.

concluded that key components of the pathway were metazoan innovations and that the Hippo pathway originated in the last common ancestor of cnidarians and bilaterians (Hilman and Gat, 2011) or sometime within the early metazoan

(Srivastava et al., 2010). Through comparative genomic analysis of several recently sequenced holozoan genomes coupled with functional genetic characterization, we provide compelling evidence that an active Hippo signaling pathway was already

present in the unicellular ancestors of Metazoa, thus significantly pushing back the origin of this important cell-signaling mechanism.

RESULTS

Comparative Genomic Analysis Reveals a Premetazoan Origin of the Hippo Signaling Pathway

To trace the evolutionary origin of Hippo signaling, we performed an extensive search of pathway components in several recently sequenced holozoan genomes (Ruiz-Trillo et al., 2007), including ichthyosporeans, filastereans, and choanoflagellates, the closest unicellular relatives of Metazoa (Torruella et al., 2011), as well as in other eukaryotes. Our comparative genomic analysis reconstructed with unprecedented detail the evolutionary history of the Hippo signaling pathway and allowed us to trace the birth of Hippo signaling well before the origin of Metazoa (Figure 1A).

We have identified clear Yki orthologs in two independent nonmetazoan lineages, the filastereans (*Capsaspora owczarzaki*, hereafter called “*Capsaspora*”) and the choanoflagellates (*Monosiga brevicollis* and *Salpingoeca rosetta*) (Figure 1B). Phylogenetic analysis clusters them unequivocally with metazoan Yki orthologs with high nodal support and well differentiated from the WWP1 and other ubiquitin ligases that also contain WW domains (Figure S1 available online). Importantly, all of these nonmetazoan Yki orthologs contain highly conserved functional sites such as the Hippo-pathway-responsive phosphorylation site S168/127 and the N-terminal homology region that is critical for interaction with the Sd/TEAD transcription factor (Figure 2A). Indeed, these holozoan species contain orthologs of Sd/TEAD with the C-terminal Y460 residue known to be important for YAP-TEAD interaction (Li et al., 2010; Chen et al., 2010).

Our searches further identified orthologs of Hpo, defined by the presence of a Ste20-like kinase domain and a SARA domain (Scheel and Hofmann, 2003), in amoebozoans, apusozoans, and most opisthokonts, with the exception of *M. brevicollis* and nonchytrid fungi, most likely because of secondary losses (Figures 1A and 1B). Likewise, Wts orthologs are present along all opisthokonts, with the possible exception of the ichthyosporeans, for which the incompleteness of genome data makes it difficult to ensure its absence. The adaptor protein Mats is present in all eukaryotes, whereas the other adaptor of the core pathway, Salvador, is present only in choanoflagellates and Metazoa. Besides these critical components of the core Hippo kinase cascade, the amoeboid *Capsaspora* encodes several upstream regulators of Hpo, such as Kibra, Mer, aPKC, and Lgl but not Ex, Crb, or the Fat signaling module (Figures 1A and 1B).

Thus, our data have pinpointed with unprecedented detail the evolutionary history of all members of the Hippo pathway and show that a well-constituted Hippo pathway was present well before the origin of Metazoa, acting in a unicellular context. Moreover, given that *Capsaspora* encodes both Kibra and Mer and the apical-basal polarity proteins Lgl and aPKC, the level of upstream regulatory complexity of the Hippo/YAP pathway in *Capsaspora* is potentially very high. Although little is known

about the receptors that lead to activation of the Hippo pathway in Metazoa, Hippo signaling is known to be activated in a cell-density-dependent manner (Zhao et al., 2010). In this regard, Mer has indeed been shown to directly mediate contact inhibition of proliferation in cell cultures (Okada et al., 2007; McClatchey and Giovannini, 2005), where Mer is known to engage reciprocal signaling with key effectors of the integrin signaling and adhesion machinery (Pugacheva et al., 2006). Interestingly, *Capsaspora* is so far the only analyzed nonmetazoan organism known to harbor all of the components of the integrin-mediated adhesion and signaling system present in metazoans (Sebé-Pedrós et al., 2010). Moreover, *Capsaspora* also encodes some genes known to be downstream of the Hippo pathway, such as Myc (Sebé-Pedrós et al., 2011) and cyclin E (data not shown). This suggests that the regulatory complexity of cell-proliferation control in the closest unicellular relatives of animals is remarkably high. Thus, a possible function of the Hippo pathway in this unicellular context could be the control of cell proliferation in a cell-density- and/or cell-adhesion-dependent manner.

The Sd-Yki Transcription Factor Complex from the Unicellular Amoeboid *Capsaspora Owczarzaki* Promotes Tissue Growth and Hippo Target Gene Expression in *Drosophila*

To test the functional relevance of our evolutionary analysis, we assayed the activities of *Capsaspora owczarzaki* (Co) Hippo pathway components in *Drosophila* (see Figures S2, S3, and S4 for sequence alignment of Yki, Sd, Hpo, Mats and Wts orthologs among *Capsaspora*, *Drosophila*, and humans). Given their critical roles in *Drosophila* and mammalian Hippo signaling, we first examined the *Capsaspora* orthologs of Sd and Yki (Figure 2A). We have shown previously that overexpression of *Drosophila melanogaster* (Dm) Yki by the GMR-Gal4 driver (GMR > Dm-Yki) leads to increased eye size (Huang et al., 2005) (Figure 2C), whereas overexpression of DmSd by the same Gal4 driver (GMR > Dm-Sd) results in smaller eye size (Figure 2D), most likely because of a dominant-negative effect whereby overexpressed Dm-Sd titrates (or squelches) certain endogenous Sd cofactor(s) (Wu et al., 2008). We found that overexpression of Co-Sd (GMR > Co-Sd) in *Drosophila* did not result in an appreciable change in eye size (Figure 2G), suggesting a reduced ability of Co-Sd to squelch endogenous Dm-Sd cofactors. Surprisingly, we found that unlike its *Drosophila* counterpart, overexpression of Co-Yki (GMR > Co-Yki) did not result in any tissue overgrowth, but rather caused a small and rough eye phenotype (Figure 2F). While the exact reason for this rough eye phenotype is unclear, the failure of Co-Yki overexpression to promote *Drosophila* eye growth suggests that Co-Yki has greatly diminished ability to interact productively with endogenous Dm-Sd to drive tissue overgrowth. Alternatively, Co-Yki may not possess intrinsic ability to drive tissue overgrowth (for example, due to its lack of general or specific coactivator activity to turn on growth-promoting genes), even if Co-Yki can form a transcription factor complex with Sd.

To distinguish between these models, we examined pairwise combinatorial overexpression between Co-Sd/Co-Yki and Dm-Sd/Dm-Yki. As shown previously, coexpression of Dm-Sd

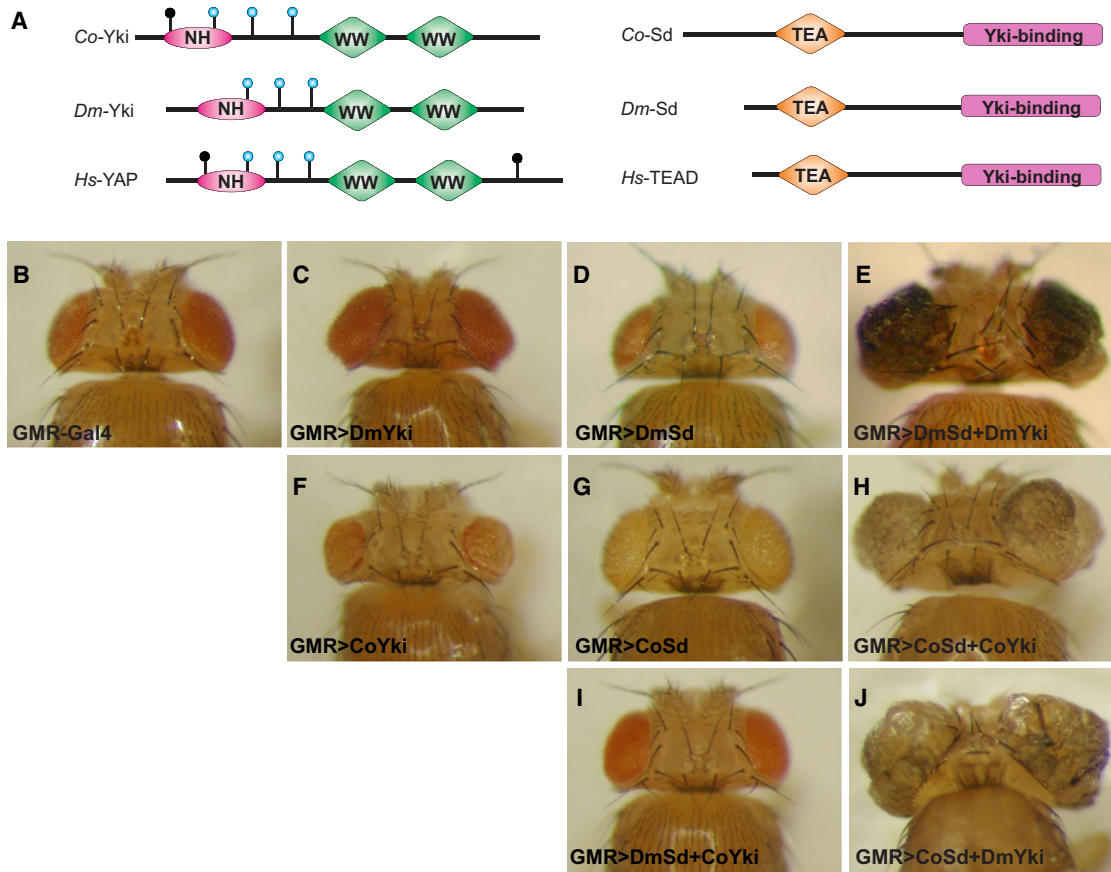


Figure 2. The Sd-Yki Transcription Factor Complex from *Capsaspora* Promotes Tissue Growth in *Drosophila*

(A) Schematic structures of Yki (left) and Sd (right) orthologs from *Capsaspora owczarzaki* (Co), *Drosophila melanogaster* (Dm), and *Homo sapiens* (Hs). Wts phosphorylation motifs (HxRxxS/T) in each Yki ortholog are indicated by vertical lines ending with circles, with the blue circles indicating the three conserved Wts phosphorylation motifs. “NH” refers to Yki’s N-terminal Homology domain that binds to Sd/TEAD. “TEA” refers to the DNA-binding domain of the Sd orthologs. (B–J) Dorsal view of adult heads from the indicated genotypes. All images were taken under the same magnification.

- (B) GMR-Gal4/+. Wild-type control.
 (C) GMR-Gal4 UAS-DmYki/+. Overexpression of DmYki resulted in an increase in eye size (compare C to B).
 (D) GMR-Gal4/UAS-DmSd. Overexpression of DmSd caused a decrease in eye size (compare D to B).
 (E) GMR-Gal4 UAS-DmYki/UAS-DmSd. The eye tissue was massively overgrown and folded.
 (F) GMR-Gal4/UAS-CoYki. Overexpression of CoYki resulted in small and rough eyes (compare F to B).
 (G) GMR-Gal4 UAS-CoSd/+. The eye size was similar to that of the wild-type control (compare G to B).
 (H) GMR-Gal4 UAS-CoSd/UAS-CoYki. The eye tissue was massively overgrown and folded.
 (I) GMR-Gal4 UAS-DmSd/UAS-CoYki. The eye size was similar to that of the wild-type control (compare I to B).
 (J) GMR-Gal4 UAS-CoSd/UAS-DmYki. The eye tissue was massively overgrown and folded.

and Dm-Yki (GMR > Dm-Sd+Dm-Yki) resulted in tremendous overgrowth of eye tissue (Figure 2E), consistent with the well-established role of the Sd-Yki complex in promoting tissue growth. In agreement with the inability of Co-Yki alone to drive tissue overgrowth, coexpression of Co-Yki and Dm-Sd (GMR > Dm-Sd+Co-Yki) failed to drive eye overgrowth (Figure 2I). We noted that the GMR > Dm-Sd+Co-Yki eyes were larger than GMR > Dm-Sd or GMR > Co-Yki eyes, suggesting that when both proteins were overexpressed at high levels, they may interact with each other, albeit in a greatly attenuated manner. Most strikingly, despite the inability of Co-Yki or Co-Yki+Dm-Sd to induce tissue overgrowth, coexpression of Co-Yki and Co-Sd (GMR > Co-Sd+Co-Yki) resulted in massive tissue overgrowth

resembling that caused by coexpression of their *Drosophila* counterparts (compare Figures 2H and 2E). A similar and massive tissue overgrowth was also observed when Co-Sd was co-expressed with Dm-Yki (GMR > Co-Sd+Dm-Yki) (Figure 2J). Thus, despite the greatly attenuated cross-species interactions between Co-Yki and Dm-Sd, the Sd-Yki complex evolves as a functional entity—it is the function of the Sd-Yki complex rather than the individual subunit that is pivotal to growth control.

To understand the molecular mechanism by which coexpression of Co-Sd and Co-Yki induces tissue overgrowth, we examined the expression of *diap1* and *ex*, two well-characterized Hippo/Yki target genes. Third instar eye imaginal discs of

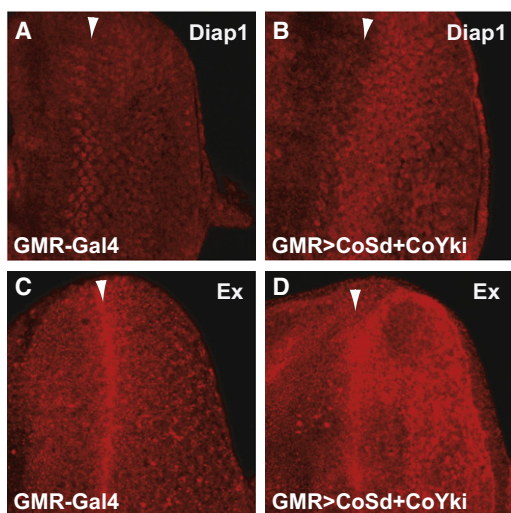


Figure 3. The Sd-Yki Transcription Factor Complex from *Capsaspora* Activates Hippo Target Genes in *Drosophila*

Confocal images of third instar eye imaginal discs from wild-type control (GMR-Gal4) (A and C) and animals with GMR-Gal4-mediated co-overexpression of Co-Sd and Co-Yki (GMR > CoSd+CoYki) (B and D). Arrowheads mark the position of the morphogenetic furrow (MF), and all eye discs are oriented anterior to the left.

(A and B) Eye imaginal discs showing Diap1 immunostaining (red). Note the elevated Diap1 expression posterior to the MF in GMR > CoSd+CoYki eye discs (compare B to A).

(C and D) Eye imaginal discs showing Ex immunostaining (red). Note the elevated Ex expression posterior to the MF in GMR > CoSd+CoYki eye discs (compare D to C).

GMR > Co-Sd+Co-Yki animals showed a marked upregulation of Diap1 and Ex staining posterior to the morphogenetic furrow (where the GMR-Gal4 driver is active) (Figure 3). Thus, despite their enormous evolutionary distance from each other, the Sd-Yki complex from a unicellular holozoan still retains the ability to promote tissue growth and to activate transcriptional targets similar to those of its *Drosophila* counterpart.

The Unicellular Amoeboid *Capsaspora Owczarzakii* Contains an Active Hippo Kinase Cascade Leading from Hpo to the Sd-Yki Complex

Our transgenic experiment predicted that Co-Sd and Co-Yki should physically interact with each other. Indeed, epitope-tagged Co-Sd and Co-Yki immunoprecipitated with each other in *Drosophila* S2R+ cells (Figure 4A), demonstrating their ability to form a protein complex. Using a well-characterized luciferase reporter driven by the minimal Hippo-Responsive Element (HRE) derived from the Hippo target gene *diap1* (Wu et al., 2008), we found that coexpression of Co-Sd and Co-Yki stimulated the transcription of the HRE-luciferase reporter in *Drosophila* S2R+ cells (Figure 4B). Together with the synergistic effect of Co-Sd and Co-Yki in inducing tissue overgrowth (Figure 2H) and Diap1 expression (Figures 3A and 3B) in vivo, these data demonstrate the ability of Co-Sd and Co-Yki to form a functional transcription factor complex with striking specificity to activate target genes similar to those of its *Drosophila* counterpart.

Next, we tested the functionality of Co-Hpo in inducing the phosphorylation of Co-Yki or Dm-Yki by coexpression of the respective constructs in *Drosophila* S2R+ cells. We found that Co-Hpo significantly inhibited Co-Sd/Co-Yki-mediated activation of the *diap1* HRE-luciferase reporter in S2R+ cells (Figure 4B), suggesting that Co-Hpo can negatively regulate the transcriptional activity of the Co-Yki/Co-Sd complex. Consistent with this finding, expression of Co-Hpo induced phosphorylation of Co-Yki in S2R+ cells, and this phosphorylation was further enhanced by coexpression of Dm-Wts (Figure 4C). Interestingly, Co-Hpo also stimulated the phosphorylation of Dm-Wts and Dm-Yki, as revealed by phospho-specific antibodies against P-Dm-Wts-T1077 and P-Dm-Yki-S168, respectively (Figure 4D). Thus, Co-Hpo can engage a canonical kinase cascade through the phosphorylation of the intermediary kinase Wts and the ultimate phosphorylation target Yki.

To corroborate the cell-based assays described above in a more physiological setting, we used a transgenic overexpression assay to examine the activity of Co-Hpo in vivo. Overexpression of Co-Hpo by the GMR-Gal4 driver (GMR > Co-Hpo) resulted in a small eye phenotype (Figures 4E and 4F) reminiscent of that caused by overexpression of its *Drosophila* counterpart, suggesting that the growth-inhibitory activity of Hpo is conserved in the unicellular *Capsaspora*. The GMR > Co-Hpo animals also allowed us to examine the influence of Co-Hpo on endogenous Yki phosphorylation in vivo. Using a phospho-specific antibody against the critical Hippo-responsive Ser168 phosphorylation site (Dong et al., 2007), we found that protein extracts from GMR > Co-Hpo fly heads showed increased Yki-S168 phosphorylation in comparison to control extracts (Figure 4G). Thus, Co-Hpo not only possesses growth-suppressing activity but also functionally activates a signaling cascade leading to the phosphorylation of endogenous Yki in *Drosophila*.

DISCUSSION

In conclusion, our study demonstrates that key components of the Hippo pathway are encoded in the genomes of unicellular relatives of metazoans. We provide compelling evidence that the amoeboid *Capsaspora* contains functional orthologs of the core Hippo kinase cascade leading from the tumor-suppressor protein Hpo to the transcriptional coactivator Yki, suggesting the existence of an active Hippo kinase cascade well before the origin of Metazoa. In particular, our data show that a well-constituted Hippo pathway originated within the Holozoa, before the divergence of filastereans, choanoflagellates, and Metazoa. Most remarkably, we demonstrate that despite the enormous evolutionary divergence, the growth-promoting and gene-regulatory activity and specificity of the Sd-Yki complex, as well as the growth-inhibitory activity of Hpo, are still retained in the unicellular *Capsaspora*. Our findings further pinpoint the Sd-Yki complex, rather than each subunit of this transcription factor complex, as a critical functional entity in the evolution of growth-control mechanisms.

The surprising conservation of biochemical functionality for different Hippo pathway elements in such phylogenetically divergent species (bilaterian metazoan versus amoeba) could probably be explained by strong functional constraints because of

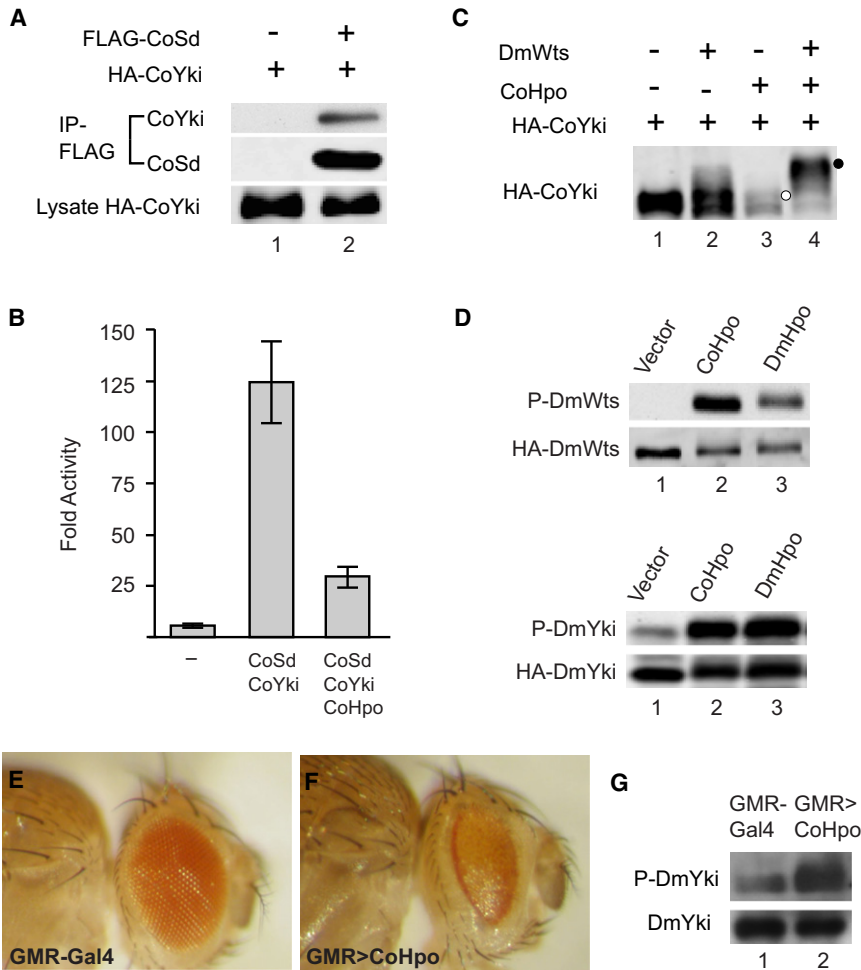


Figure 4. The Unicellular Amoeboid *Capsaspora owczarzaki* Contains an Active Hippo Kinase Cascade Leading from Hpo to Yki Phosphorylation

(A) Physical association between Co-Sd and Co-Yki. S2R+ cell lysates expressing the indicated constructs were immunoprecipitated (IP) and probed with the indicated antibodies. HA-CoYki was detected in FLAG-IP in the presence (lane 2), but not the absence (lane 1), of FLAG-CoSd.

(B) Co-Hpo antagonized Co-Sd/Co-Yki-mediated activation of an HRE-luciferase reporter in S2R+ cells. S2R+ cells were transfected with HRE-luciferase reporter along with the indicated expression constructs for Co-Sd, Co-Yki, and Co-Hpo. Luciferase activity was quantified in triplicates and plotted. Note the activation of the HRE-luciferase reporter by Co-Sd/Co-Yki, and the inhibition of Co-Sd/Co-Yki-stimulated HRE-luciferase activity by Co-Hpo.

(C) Co-Hpo induced Co-Yki phosphorylation in cultured *Drosophila* cells. S2R+ cell lysates expressing HA-CoYki together with the indicated constructs were probed with HA antibody. Note the mobility shift of HA-CoYki induced by Co-Hpo (retarded band indicated by white circle) and the supershift induced by Co-Hpo plus DmWts (supershifted band indicated by black circle).

(D) Co-Hpo stimulated Dm-Wts and Dm-Yki phosphorylation in cultured *Drosophila* cells. S2R+ cells expressing HA-DmWts (top two gels) or HA-DmYki (lower two gels) in combination with Co-Hpo or Dm-Hpo were probed with P-Wts-T1077 or P-Yki-S168, respectively. Note that both Co-Hpo and Dm-Hpo resulted in increased levels of P-DmWts-T1077 or P-DmYki-S168 (compare lanes 2 and 3 with lane 1 in both gels).

(E and F) Growth-suppressing activity of Co-Hpo in *Drosophila*. Side views of adult heads of control (GMR-Gal4/+) (E) and flies that overexpressed Co-Hpo in the eye (GMR-Gal4/UAS-CoHpo) (F). Note the reduced eye size of GMR > CoHpo flies (compare F to E).

(G) Overexpression of Co-Hpo stimulated phosphorylation of endogenous Yki in *Drosophila*. Protein extracts from control (GMR-Gal4) or GMR > CoHpo adult heads were probed with antibodies against endogenous DmYki and P-DmYki-S168. Note the increase in P-DmYki signal in GMR > CoHpo adult head extracts (compare lane 2 to lane 1).

the varied network of interactions of these components. In theory, these different network elements could have independently coevolved and, therefore, not be functional within another species context. The fact that the different Hippo pathway elements of *Capsaspora* are indeed functional within the multicellular *Drosophila* background strongly supports a functional homology between the unicellular and multicellular Hippo pathway. This suggests that the current function of the Hippo signaling pathway might be somehow similar within these two biological contexts.

How the ancestral Hippo kinase cascade is used in a unicellular organism such as *Capsaspora* remains a mystery at present. We speculate that this pathway might be used to coordinate cell proliferation in response to cell density or cell polarity (e.g., upon substrate adhesion), given the established roles of Merlin, Kibra, aPKC, and Lgl (all of which are encoded in *Capsaspora* genome) in these biological processes. The absence of other developmental signaling pathways, such as Notch,

Hedgehog, Wnt, or BMP, in *Capsaspora* or any other analyzed unicellular holozoan emphasizes the relevance of Hippo signaling as a key developmental mechanism predating the origin of Metazoa. The exaptation of this pathway may have easily provided a mechanism for strict control of cell proliferation in early metazoans, an essential property for any integrated multicellular entity. The presence of a functional and highly conserved Hippo pathway in *Capsaspora* accentuates not only the importance of analyzing the unicellular prehistory of animals to understand their origin, but also the role that gene co-option may have played in the unicellular-to-multicellular transition.

EXPERIMENTAL PROCEDURES

Gene Searches and Phylogenetic Analysis

Genes were searched by with the use of BLAST (blastp, blastn, and tblastn) and BLAST reverse, with several sequences used as queries, as described

previously (Sebé-Pedrós et al., 2010). Some genes could be identified only through phylogenetic analyses. A full list of the genes and sequences used, including the newly annotated ones, is shown in Table S1. The taxon sampling used is shown in Figure 1B and includes new genome sequences obtained by the UNICORN genome project (see http://www.broadinstitute.org/annotation/genome/multicellularity_project/MultiHome.html) (Ruiz-Trillo et al., 2007). Domain arrangements were confirmed by Pfam and SMART. Alignments were constructed with the MAFFT online server (<http://mafft.cbrc.jp/alignment/server/>) (Kato et al., 2002) and then manually inspected and edited in Geneious. Only those species and those positions that were unambiguously aligned were included in the final analysis. Maximum likelihood (ML) phylogenetic trees were estimated by Raxml (Stamatakis, 2006) through the use of the PROTGAMMAIWAG+ Γ +I model of evolution. Nodal supports were assessed by the performance of 100-bootstrap replicates with the same evolutionary model. Bayesian analysis was performed with MrBayes 3.1 (Ronquist and Huelsenbeck, 2003) through the use of the WAG+ Γ +I model of evolution, four chains, and two parallel runs. Runs were stopped when the average SD of split frequencies of the two parallel runs was < 0.01, usually around 1,000,000 generations, and burn-in length was established by checking of the two LnL graphs; stationarity of the chain typically occurred after ~15% of the generations.

The annotation of *Capsaspora* Yorkie (Co-Yki) was further checked by the use of 5' and 3' rapid amplification of cDNA ends (RACE) PCR under standard conditions. An Excel file with all the sequences of the genes used in this study can be downloaded from <http://www.multicellgenome.com>.

Drosophila Genetics and Cell Culture

Capsaspora Hpo, Yki, and Sd cDNAs were amplified by PCR and inserted into pUAST vector to generate pUAST-CoHpo, pUAST-CoYki, and pUAST-CoSd constructs, respectively. Transgenic flies were made by P-element-mediated germline transformation pUAST constructs. Flies were raised on standard cornmeal medium at 25°C. Eye imaginal discs of wandering third instar larvae were fixed and stained as previously described (Yu et al., 2010) with the use of α -Ex (1:5000) (gift of R.G. Fehon) (Maitra et al., 2006) and α -Diap1 (1:600) (gift of B. A. Hay) (Yoo et al., 2002). For analysis of endogenous Yki phosphorylation in fly tissues, 20 fly heads from control (GMR-Gal4) or Co-Hpo-transgenic (GMR > CoHpo) animals were smashed in 50 μ l 2 \times SDS loading buffer and then boiled for 5 min. After centrifugation at 12,000 rpm for 5 min, 10 μ l supernatants were separated on 8% SDS-PAGE and transferred to an Immobilon-P PVDF membrane. The Western blots were probed with rabbit α -P-S168-Yki and rabbit α -Yki antibodies (Dong et al., 2007).

Drosophila S2R+ cells were propagated in Schneider's medium (GIBCO) supplemented with 10% FBS and antibiotics. Luciferase assay was carried out with the use of the HRE-luciferase reporter as described previously (Wu et al., 2008), with the use of pUAST-CoHpo, pUAST-CoYki, and pUAST-CoSd constructs in combination with pAc-Gal4 construct. Expression constructs for HA-DmWts and HA-DmYki have been described previously (Ling et al., 2010; Huang et al., 2005). Yki and Wts phosphorylation was probed with the use of rabbit α -P-S168-Yki (Dong et al., 2007) and rabbit α -P-Wts-T1077 (Yu et al., 2010).

For immunoprecipitation, HA-CoYki and FLAG-CoSd were constructed in the pAc5.1/V5-HisB vector by the addition of the respective epitope at the N terminus of each protein. S2R+ cells transiently transfected with these constructs were lysed in lysis buffer (50 mM Tris [pH7.4], 150 mM NaCl, 1 mM EDTA, 0.5% Triton X-100) supplemented with protease inhibitor cocktail (Roche) and phosphatase inhibitor cocktail (20 μ M sodium fluoride, 4 mM sodium orthovanadate, 4 mM sodium pyrophosphate, 12 mM β -glycerophosphate). Lysate was cleared by centrifugation at 14,000 rpm for 5 min. Supernatant was incubated with ANTI-FLAG M2 Affinity Gel (Sigma-Aldrich) at 4°C for 2 hr, followed by centrifugation and washing as described previously (Yu et al., 2010).

ACCESSION NUMBERS

The GenBank accession number for the *Capsaspora* Yorkie sequence reported in this paper is JN202490.

SUPPLEMENTAL INFORMATION

Supplemental Information includes four figures and one table and can be found with this article online at doi:10.1016/j.celrep.2011.11.004.

LICENSING INFORMATION

This is an open-access article distributed under the terms of the Creative Commons Attribution 3.0 Unported License (CC-BY; <http://creativecommons.org/licenses/by/3.0/legalcode>).

ACKNOWLEDGMENTS

The genome sequences of *C. owczaraki*, *S. rosetta*, *A. macrogynus*, *S. punctatus*, and *T. trahens* are being determined by the Broad Institute of MIT/Harvard University under the auspices of the National Human Genome Research Institute (NHGRI) and within the UNICORN initiative. We thank Joint Genome Institute, Broad Institute, and Baylor College of Medicine for making data publicly available. We also thank Dr. Kim Worley and her colleagues in the Human Genome Sequencing Center of Baylor College of Medicine for allowing us to use the *A. castellanii* genome sequence. We are grateful to Drs. Rick Fehon and Bruce Hay for providing antibodies used in this study. This work was supported by an Institució Catalana per a la Recerca i Estudis Avançats contract, a European Research Council Starting Grant (ERC-2007-StG-206883), a grant (BFU2008-02839/BMC) from Ministerio de Ciencia e Innovación (MICINN) to I. R.-T., and a National Institutes of Health grant (R01 EY015708) to D.P. A.S.-P. was supported by a pregraduate Formacion Profesorado Universitario grant from MICINN. D.P. is an investigator of the Howard Hughes Medical Institute.

Received: September 23, 2011

Revised: November 7, 2011

Accepted: November 18, 2011

Published online: December 15, 2011

REFERENCES

- Adamska, M., Matus, D.Q., Adamski, M., Green, K., Rokhsar, D.S., Martindale, M.Q., and Degnan, B.M. (2007). The evolutionary origin of hedgehog proteins. *Curr. Biol.* 17, R836–R837.
- Badouel, C., Garg, A., and McNeill, H. (2009). Herding Hippos: regulating growth in flies and man. *Curr. Opin. Cell Biol.* 21, 837–843.
- Chen, L., Chan, S.W., Zhang, X., Walsh, M., Lim, C.J., Hong, W., and Song, H. (2010). Structural basis of YAP recognition by TEAD4 in the hippo pathway. *Genes Dev.* 24, 290–300.
- Dong, J., Feldmann, G., Huang, J., Wu, S., Zhang, N., Comerford, S.A., Gayyed, M.F., Anders, R.A., Maitra, A., and Pan, D. (2007). Elucidation of a universal size-control mechanism in *Drosophila* and mammals. *Cell* 130, 1120–1133.
- Halder, G., and Johnson, R.L. (2011). Hippo signaling: growth control and beyond. *Development* 138, 9–22.
- Harvey, K., and Tapon, N. (2007). The Salvador-Warts-Hippo pathway - an emerging tumour-suppressor network. *Nat. Rev. Cancer* 7, 182–191.
- Hilman, D., and Gat, U. (2011). The evolutionary history of YAP and the hippo/YAP pathway. *Mol. Biol. Evol.* 28, 2403–2417.
- Huang, J., Wu, S., Barrera, J., Matthews, K., and Pan, D. (2005). The Hippo signaling pathway coordinately regulates cell proliferation and apoptosis by inactivating Yorkie, the *Drosophila* Homolog of YAP. *Cell* 122, 421–434.
- Kato, K., Misawa, K., Kuma, K., and Miyata, T. (2002). MAFFT: a novel method for rapid multiple sequence alignment based on fast Fourier transform. *Nucleic Acids Res.* 30, 3059–3066.
- King, N., Hittinger, C.T., and Carroll, S.B. (2003). Evolution of key cell signaling and adhesion protein families predates animal origins. *Science* 301, 361–363.

- King, N., Westbrook, M.J., Young, S.L., Kuo, A., Abedin, M., Chapman, J., Fairclough, S., Hellsten, U., Isogai, Y., Letunic, I., et al. (2008). The genome of the choanoflagellate *Monosiga brevicollis* and the origin of metazoans. *Nature* *451*, 783–788.
- Li, Z., Zhao, B., Wang, P., Chen, F., Dong, Z., Yang, H., Guan, K.L., and Xu, Y. (2010). Structural insights into the YAP and TEAD complex. *Genes Dev.* *24*, 235–240.
- Ling, C., Zheng, Y., Yin, F., Yu, J., Huang, J., Hong, Y., Wu, S., and Pan, D. (2010). The apical transmembrane protein *Crumbs* functions as a tumor suppressor that regulates Hippo signaling by binding to *Expanded*. *Proc. Natl. Acad. Sci. USA* *107*, 10532–10537.
- Maitra, S., Kulikauskas, R.M., Gavilan, H., and Fehon, R.G. (2006). The tumor suppressors *Merlin* and *Expanded* function cooperatively to modulate receptor endocytosis and signaling. *Curr. Biol.* *16*, 702–709.
- Manning, G., Young, S.L., Miller, W.T., and Zhai, Y. (2008). The protist, *Monosiga brevicollis*, has a tyrosine kinase signaling network more elaborate and diverse than found in any known metazoan. *Proc. Natl. Acad. Sci. USA* *105*, 9674–9679.
- McClatchey, A.I., and Giovannini, M. (2005). Membrane organization and tumorigenesis—the NF2 tumor suppressor, *Merlin*. *Genes Dev.* *19*, 2265–2277.
- Okada, T., You, L., and Giancotti, F.G. (2007). Shedding light on *Merlin*'s wizardry. *Trends Cell Biol.* *17*, 222–229.
- Pan, D. (2010). The hippo signaling pathway in development and cancer. *Dev. Cell* *19*, 491–505.
- Pires-daSilva, A., and Sommer, R.J. (2003). The evolution of signalling pathways in animal development. *Nat. Rev. Genet.* *4*, 39–49.
- Pugacheva, E.N., Roegiers, F., and Golemis, E.A. (2006). Interdependence of cell attachment and cell cycle signaling. *Curr. Opin. Cell Biol.* *18*, 507–515.
- Reddy, B.V., and Irvine, K.D. (2008). The Fat and Warts signaling pathways: new insights into their regulation, mechanism and conservation. *Development* *135*, 2827–2838.
- Ronquist, F., and Huelsenbeck, J.P. (2003). MrBayes 3: Bayesian phylogenetic inference under mixed models. *Bioinformatics* *19*, 1572–1574.
- Ruiz-Trillo, I., Burger, G., Holland, P.W., King, N., Lang, B.F., Roger, A.J., and Gray, M.W. (2007). The origins of multicellularity: a multi-taxon genome initiative. *Trends Genet.* *23*, 113–118.
- Scheel, H., and Hofmann, K. (2003). A novel interaction motif, SARAH, connects three classes of tumor suppressor. *Curr. Biol.* *13*, R899–R900.
- Sebé-Pedrós, A., Roger, A.J., Lang, B.F., King, N., and Ruiz-Trillo, I. (2010). Ancient origin of the integrin-mediated adhesion and signaling machinery. *Proc. Natl. Acad. Sci. USA* *107*, 10142–10147.
- Sebé-Pedrós, A., de Mendoza, A., Lang, B.F., Degnan, B.M., and Ruiz-Trillo, I. (2011). Unexpected repertoire of metazoan transcription factors in the unicellular holozoan *Capsaspora owczarzaki*. *Mol. Biol. Evol.* *28*, 1241–1254.
- Srivastava, M., Simakov, O., Chapman, J., Fahey, B., Gauthier, M.E., Mitros, T., Richards, G.S., Conaco, C., Dacre, M., Hellsten, U., et al. (2010). The Amphimedon queenslandica genome and the evolution of animal complexity. *Nature* *466*, 720–726.
- Stamatakis, A. (2006). RAxML-VI-HPC: maximum likelihood-based phylogenetic analyses with thousands of taxa and mixed models. *Bioinformatics* *22*, 2688–2690.
- Torruella, G., Derelle, R., Paps, J., Lang, B.F., Roger, A.J., Shalchian-Tabrizi, K., and Ruiz-Trillo, I. (2011). Phylogenetic relationships within the Opisthokonta based on phylogenomic analyses of conserved single copy protein domains. *Mol. Biol. Evol.* Published online July 28, 2011.
- Wu, S., Liu, Y., Zheng, Y., Dong, J., and Pan, D. (2008). The TEAD/TEF family protein *Scalloped* mediates transcriptional output of the Hippo growth-regulatory pathway. *Dev. Cell* *14*, 388–398.
- Yoo, S.J., Huh, J.R., Muro, I., Yu, H., Wang, L., Wang, S.L., Feldman, R.M., Clem, R.J., Müller, H.A., and Hay, B.A. (2002). *Hid*, *Rpr* and *Grim* negatively regulate *DIAP1* levels through distinct mechanisms. *Nat. Cell Biol.* *4*, 416–424.
- Yu, J., Zheng, Y., Dong, J., Klusza, S., Deng, W.M., and Pan, D. (2010). *Kibra* functions as a tumor suppressor protein that regulates Hippo signaling in conjunction with *Merlin* and *Expanded*. *Dev. Cell* *18*, 288–299.
- Zeng, Q., and Hong, W. (2008). The emerging role of the hippo pathway in cell contact inhibition, organ size control, and cancer development in mammals. *Cancer Cell* *13*, 188–192.
- Zhao, B., Li, L., Lei, Q., and Guan, K.L. (2010). The Hippo-YAP pathway in organ size control and tumorigenesis: an updated version. *Genes Dev.* *24*, 862–874.