

Pupils on the move: School catchment area segregation and residential mobility of urban families

Abstract

Socio-spatial segregation has been recognised as an important factor affecting school segregation and educational attainment in urban schools. As urban populations grow and socio-spatial segregation has become a pressing issue in many contexts, a more sophisticated understanding of the interconnections between spatial and school segregation is needed, including the role of school catchment areas as a possible mediating factor. In our article, we focus on the two-way relationship between urban residential mobility and catchment area segregation in Helsinki, Finland. Using fine-grain statistical data we analyse, how the long-term changes in spatial segregation have changed catchment area populations, and how residential mobility of families with children is in turn related to catchment area composition. The analysis focuses on the majority population whose residential choices typically have the strongest impact on segregation patterns in cities. Our main finding is that there is a systematic relationship between socio-spatial segregation and catchment area differentiation, where the disadvantaged areas are consistently left behind in the general socio-economic

development. Even though the institutional school quality is high throughout the city, the residential choices of families with children feed into the self-perpetuating cycles of segregation, as the most disadvantaged areas are rejected and privileged areas favoured in mobility patterns. The results highlight the need for urban educational policies with a high sensitivity to the persistent socio-spatial inequalities shaping educational opportunities.

Keywords: Urban segregation, school segregation, school catchment areas, residential mobility, families with children

Introduction

Throughout Western cities, families with children frequently report schools as a major consideration in residential decisions (e.g. Owens, 2017; Boterman, 2013; Butler and Hamnett, 2007). The residential flows of educationally motivated families make access to particular schools one of the factors shaping the social landscape of urban areas.

Butler and Hamnett (2007: 1167) describe the British middle-class families' drive to ensure their children's safety and educational success by stating that their strategies "will range from residential moves towards areas with 'better' schools or 'better' social composition, to attempts to get the child into a 'good' state school." While the parental

preferences on school quality, reputation and social composition have received plenty of attention, the complex spatial links between schools, catchment areas and residential decisions are not yet thoroughly understood (see Owens, 2017).

The role of school catchment areas as geographical boundaries mediating the effects of urban segregation on school segregation has lately received particular interest. This has prompted efforts to identify how the boundary-setting of the catchment areas affect the social mix within the area and the school, as well as analyses in the ways in which these boundaries can influence the residential decisions of families (Monarrez, 2018; Owens, 2017; Richards, 2014). School and catchment area related residential decisions feed into growing socio-spatial segregation through either attracting families in or prompting out-mobility and residential avoidance.

In this paper, we follow residential moves between school catchment areas for the first time in the Finnish context, linking the institutional boundaries to the mobility flows and residential patterns. We aim to contribute to the understanding of the interconnected dynamics between urban segregation, school catchment area segregation and residential mobility of families with children, using empirical data from the capital city Helsinki. The analysis is focused on the residential mobility decisions of the families with a Finnish background, as it has been demonstrated both in international and previous Finnish studies that it is particularly the majority population's choices for housing and

schools that shape the patterns of segregation in cities (e.g. Andersson, 2013; Kauppinen and van Ham, 2018; Kosunen, 2016; Vilkama, 2011). The majority population tends to be better able to choose their residential locations than most minority groups, and they are also more likely to show “flight” or “avoidance” behaviour in their search for a ‘good’ school and neighbourhood.

Our main focus is to analyse how socio-economic segregation of the school catchment areas is linked to residential decisions. In a wider perspective, we track down elements of the “two-way relationship” between schooling and geography, as described by Gordon and Monastiriotis (2007: 1225). In this case: how urban socio-economic segregation affects the social composition in school catchment areas, and how this, in turn, is linked to the residential decisions of families, potentially further exacerbating segregation. Block-level GIS-data and neighbourhood-level residential mobility data are used to track down, how changes in residential segregation have affected the differentiation of primary school catchment areas in Helsinki in long-term, and how urban segregation is further affected by the residential mobility of families with different-aged children in different socio-economic neighbourhood contexts.

As both segregation and educational inequalities are becoming increasingly pressing issues in most Western cities (Tammaru et al., 2016), there is a growing need for the analysis of residential decisions, social and ethnic diversity and school networks in a

shared spatial framework to understand the interlinked dynamics of urban and school segregation. Although residential choices are complex and reflect changes in family situations and housing needs, as well as the quality and availability of different types of housing and neighbourhoods, families' mobility patterns also reflect the parents' interests in choosing or rejecting particular schools (e.g. Boterman, 2013; Bridge, 2006; Butler and Hamnett, 2007; Vilkama et al., 2016). More importantly, the residential choices of families – made for whatever reason – further shape the social landscape of the catchment areas, potentially exacerbating the processes of segregation. If we can observe residential mobility patterns which consistently relate to the local socio-economic privilege or disadvantage at the school catchment area level, we are better equipped to understand the dynamic links between urban segregation, school segregation and neighbourhood development — and the role of catchment areas as mediators between spatial and school segregation. Understanding these drivers is crucial for developing policy solutions to target the growing challenges of urban and educational inequalities.

Findings in an egalitarian Nordic context have been argued to be relevant for understanding the drivers of change also across more segregated systems, as the educational and welfare systems are geared at reducing inequalities (see Bernelius & Vaattovaara 2016). Helsinki is a particularly interesting setting for school-related research, as the egalitarian national and local welfare state policies are strong even in

the Nordic context, targeting both schools and neighbourhoods. The Finnish schools are renowned for their quality and relatively equal outcomes, and with the strong public control and financing that acknowledges differences in pupil compositions in schools, school quality is generally assumed to be fairly constant (Bernelius, 2013; OECD, 2018).

In this context, most of the observed differentiation of outcomes between schools has been demonstrated to stem from socio-spatial and pupil segregation rather than pedagogical or resource differentiation (Bernelius, 2013; Kosunen, 2016). These local features have been argued to reduce the effects of “shopping” for school quality through residential moves. As there is no need to avoid certain schools in the fear of poor pedagogical quality, the local social mix has been observed to be the dominating feature in school choices and school-related housing choices (Bernelius, 2013; Harjunen et al., 2018). On the other hand, the school network is based on strong catchment area system where school allocation is tied to home address. This kind of strong spatial linkage has been demonstrated to highlight the interlinked dynamics between residential decisions and schools through catchment area borders (Cheshire and Sheppard, 2004; Harjunen et al., 2018; Owens, 2017). This yields the Helsinki context a relevant case laboratory for research on the effects of segregation.

Segregation, schools and parental strategies of social reproduction

The theoretical foundation of our analysis is built on one hand on the observed spatial links between urban and school segregation (Andersson et al., 2010a; Gordon and Monastiriotis, 2007) and on the other hand on the theoretical framework of the middle-class social reproduction as a driver of selective school and residential choice (Ball, 2003; Kosunen, 2016; Maloutas and Ramos Lobato, 2015; Owens, 2017; Raveaud and Van Zanten, 2007).

In general terms, the socio-spatial differentiation of cities is reflected in the schools' social environment and pupil base. However, local variations in the socio-spatial and policy context produce strongly differentiated environments for school networks and the choices available for families (see e.g. André-Bechely, 2007; Boterman, 2013; Butler and Hamnett, 2007; Gordon and Monastiriotis, 2007; Hamnett and Butler, 2013). The association between residential and school segregation is especially strong when school allocation is regulated through catchment areas, but it is also visible in choice-based systems (e.g. Boterman in this journal; Cheshire and Sheppard, 2004). Spatial differences in educational background, employment and other dimensions of social disadvantage affect the social fabric and reputation of neighbourhoods, which is further reflected in the schools' pupil base and the interaction between the school and the neighbourhood (Hamnett and Butler, 2013).

A growing body of research has described ways in which segregation may affect educational outcomes (Andersson et al., 2010; Bernelius, 2013; Gordon and Monastiriotis, 2007; Nieuwenhuis and Hooimeijer, 2015). As the family background is linked to educational outcomes at the individual level, the composition of the pupil base in a certain school affects the school's capacity for educational attainment. The statistical links between socio-economic background and educational outcomes are similar throughout all Western countries: despite local variation in effect size, higher parental status tends to translate to better pupil outcomes (OECD, 2013). The effect of ethnic background, on the other hand, varies greatly between ethnic groups and national contexts from positive to negative associations between minority status and educational outcomes (OECD, 2013). In Finland, immigrant background is generally correlated to significantly lower educational outcomes than having a Finnish background, and in Helsinki the socio-economic and ethnic differentiation of the pupil base has together been demonstrated to account for over 60 percent of the variation in the educational outcomes of primary schools (Bernelius, 2013; OECD, 2013: 75).

School segregation and the differentiation of educational outcomes are further reflected in school choices, as the parents who apply active choices tend to favour the schools with less observable social disadvantages. The most active group in the school market are middle-class parents, whose decision-making surrounding their children's education involves numerous considerations of the schools' supposed qualities and opportunities

offered to children both through the institutional structures as well as the peer group (Ball et al., 1996; Butler and Robson, 2003; Byrne, 2006; Noreisch, 2007; Raveaud and van Zanten, 2007; Vincent et al., 2010). Parental views on desirable schools tend to be strongly associated to the social and ethnic composition to access certain type of social capital and to avoid “problematic” socialisation (Boterman, 2013; Butler and Hamnett, 2007; Byrne, 2006; Karsten et al., 2003).

The motivations for school choices have been researched in the Finnish context in different qualitative and quantitative settings (e.g. Bernelius, 2013; Kosunen, 2016; Kosunen et al., 2016; Seppänen, 2006). These studies have pointed out that as the institutional qualities vary relatively little between schools, there are no official school ranking lists available to parents, and the curriculum, funding and teacher qualifications are relatively constant, school choice appears to be particularly linked to the observed and presumed social aspects of the schools. In parental interviews, school qualities, such as the available selective classes like music education, are frequently mentioned, but school reputation, perceived social problems and the socio-economic and ethnic backgrounds of the pupils are also considered remarkably often (Kosunen, 2016; Seppänen, 2006). It is especially notable that parents very rarely mention distrust in pedagogical aspects as a reason for rejecting certain schools (Kosunen, 2016).

Quantitative studies have confirmed that choice decisions are linked to the social mix in the schools and the socio-spatial characteristics of the catchment areas, rather than

institutional qualities, especially in rejecting disadvantaged neighbourhood schools (Bernelius, 2013; Bernelius and Vaattovaara, 2016; Kosunen et al., 2016).

School network and residential mobility

The identified drivers of school choice may also motivate the residential mobility of families with children. Although it is well-known that families' residential mobility is by foremost triggered by changing family and work situations, and hence affected by changes in housing needs (e.g. Rossi, 1955), the crucial question is where new housing is looked for. Residential mobility decisions can be conceptualised as a two-step process, where the first step includes the actual decision to change housing, while the second step involves the decision on where to move (Brown & Moore, 1970).

Neighbourhood- and school-related reasons may become relevant particularly in the second stage of the decision making, when families start looking for a new dwelling that suits their housing needs. Both the built environment and the socio-economic and ethnic composition of neighbourhoods and schools are carefully scrutinized when decisions to move are made (Musterd et al., 2016; Vilkama et al., 2016).

Factors affecting residential decisions are thus multiple, and with schools it is challenging to separate the effects of pedagogical qualities from the effects of the social mix. However, previous studies clearly demonstrate that schools in general can be considered central to research on urban segregation and neighbourhood development

when families with children are concerned (see e.g. Bridge, 2006; Musterd et al., 2016). In qualitative housing preference studies, parents typically report that finding a neighbourhood that is good for children is one of the most important considerations when choosing where to live, and schools are viewed as integral to that package also in Helsinki context (Dhalmann et al., 2013). It has also been demonstrated that schools appear to influence housing prices. This indicates that families may be willing to pay a premium for access to certain schools or social networks within those schools (Cheshire & Sheppard, 2004; Harjunen et al., 2018).

Boterman (in this journal), demonstrates how the physical proximity to certain schools may play an important role for families even though access to schools is not limited by institutional catchment area policies. When the school network is organised around physical catchment areas, geography becomes even more relevant for education. In this case, the catchment area borders represent direct institutional access to certain schools, as well as mediate the effects of urban segregation to the pupil mix within the neighbourhood school (Monarrez, 2018; Owens, 2017; Richards, 2014). The lines dividing institutional access thus become a factual spatial consideration for parents motivated to either avoid or favour a certain school. This may affect the development of the catchment area composition, especially if the choices manifest in avoidance of poorer areas.

The relationship between residential location and school allocation is strong in Helsinki, as the city is divided into 85 primary school catchment areas, in which pupils are allocated to based on their home address. Since the mid-1990s families have had a right to choose a school outside their own catchment area, but admission depends on the available places or specific entrance criteria. The role of public schools in Finland is strong by international standards, as the number of private schools is low and they are highly controlled by the national curriculum. None of the schools are entitled to charge a fee, and many of the existing private schools have their own catchment areas, making them effectively public schools managed by private bodies. Opting out of the public school network is thus not a valid option for most families, and currently well over 80 percent of primary school children attend the school within their own catchment area.

Despite the recent research evidence on the possible association between schools and residential decisions in Helsinki, there have thus far been no research tackling the relationship between school catchment area composition and residential mobility in the city. Furthermore, all urban and educational policies in the city are formulated on the assumption that there is no association between these factors. As there is very little qualitative differentiation between the schools in Helsinki, and the level of urban segregation is still relatively moderate, the urban and educational policies have assumed that the residential decisions are not systematically linked to socio-economic differentiation of the school catchment areas in the way hypothesized in more

segregated contexts. However, based on previous research, our key hypothesis is that the middle-class preferences may act as a driver for residential choices also in the Finnish context. If the results show consistent selectivity in residential flows, the observations would be relevant to local policies as well as the academic understanding of the dynamics between the school qualities versus social composition as drivers for residential mobility of the educationally motivated families.

Research design

In this paper, we explore the connections between urban and school segregation by analysing the longitudinal effects of urban segregation on the school catchment areas, and by assessing the possibility of further differentiating effects of residential decisions by examining mobility flows into and out of privileged and disadvantaged school catchment areas. The research questions are: 1) How has the socio-economic and ethnic differentiation in Helsinki affected the segregation of school catchment areas from 1995 onwards?; and 2) How are residential decisions related to catchment area segregation, and can they further exacerbate segregation? To specify: Are residential mobility flows of families with children between school catchment areas random, or can we observe patterns which are consistent with patterns of segregation?

We concentrate on the municipality of Helsinki. Although Helsinki is part of the wider urban region, local differences in municipal school policies complicate inter-municipal

comparisons. However, the variance in the urban structure is similar across the metropolitan municipalities, and Helsinki houses very urban neighbourhoods, as well as large suburban areas. The results can thus be relatively well generalized to the whole metropolitan region.

The mobility pattern analysis is focused on the residential mobility choices of the majority population, i.e. families with a Finnish background, operationalised in the data as families with Finnish as their mother tongue. This includes all residents, regardless of their nationality, who are registered to speak Finnish as their first language. The mobility flows of families with a foreign background (unless registered as Finnish-speakers) are excluded from the analysis. The Swedish-speaking minority (6 % of the population) is also excluded as the Swedish schools form their own spatial network and catchment areas.

Our datasets consist of fine-grain spatial data on the socio-economic and housing characteristics, and data on residential mobility flows to and from Helsinki neighbourhoods. The mobility data is constructed by Statistics Finland and it can be broken down by age in one-year intervals. The socio-economic and housing data is drawn from the Municipal Building and Population Registers as well as from the Statistics Finland Grid Database, which covers the city in a 250-meter-grid. These datasets have been aggregated to primary school catchment areas (one school per area)

using GIS and statistical software on multiple years from 1995 to 2011/2015. Urban segregation over time is also analysed via dissimilarity indexes (see e.g. Tammaru et al., 2016).

The mobility data includes yearly inwards and outwards residential moves of children in the neighbourhoods of Helsinki from 2005 to 2014. Both inter-municipal and intra-municipal residential mobility flows are included in the dataset. However, within-neighbourhood moves have been omitted. The data does not include socio-economic or household information of the movers, and therefore the residential mobility of primary-school-aged (7–12) and younger children is used as an instrument to illustrate mobility patterns of families with children. By comparing mobility patterns and net-mobility flows to and from school catchment areas, we can determine how attractive different catchment areas appear as living environments for families with children. Mobility rates are measured as a percentage of in- and out-movers from a total (annual average) population in a given age-group and school catchment area. Net-mobility rates illustrate the balance between in- and out-movers. If net-migration is positive, there are more in-movers than out-movers, and vice versa.

We have grouped the school catchment areas into three categories based on their average income and the share of adults without secondary education in 2012. These two socio-economic characteristics are known to correlate strongly with educational

attainment in schools (Bernelius, 2013). Areas falling to the lowest or highest quartiles according to both indicators were selected in the “disadvantaged” and “well-off” categories. There were exactly 13 areas in both of these groups. The remaining areas were grouped as an “in-between” category, which forms the third group of catchment areas. There is some overlap in income and educational level between the areas belonging to the disadvantaged and the middle category, and to well-off and the middle category, as can be seen in Table 1 (and in Figure 3 in the Results). However, as our aim is to focus the analysis on the areas with *multiple disadvantage and privilege*, the catchment areas belonging to the low (or high) end of the distribution in only one of the indicators – not both – fall in the middle group. Our hypothesis is that if the schools and their catchment areas have some effect on the mobility choices of families with children – in other words, if some areas are avoided and some found attractive – it should be most visible in the migration flows of the most clearly disadvantaged and privileged areas.

There are some limitations in this approach: static catchment area categorisation does not allow areas to move from one category to another, despite possible changes in socio-economic status. However, this does not pose a major problem, as neighbourhood-level socio-economic compositions change rather slowly (see e.g. Vilkama and Lönnqvist, 2014). Such categorisation is needed for us to be able to follow

and compare migration flows between different catchment area types over a 10-year period.

In addition to socio-economic categorisation, the catchment areas have been grouped into three categories in relation to their time-distance location in the urban structure: downtown, inner-urban ring and outer-urban ring.

Table 1 depicts the average socio-economic and housing characteristics of the disadvantaged, well-off and other catchment area categories, and the map (Figure 1) shows their locations. The most disadvantaged areas consist predominantly of multifamily-housing and rental units. All but one of these areas are located in the outer suburbs in the north-eastern part of the city where housing is less expensive. The most privileged, well-off areas are more varied in their housing structure and location. Six of these areas are located in the dense, affluent downtown area consisting solely of multifamily-housing, while the other half is situated in the inner and outer urban ring with larger shares of family-sized dwellings and detached and row houses. The other areas, the third category, are situated in both the inner and outer urban ring of the suburbs, with four areas in downtown. While there are some clear differences in housing and tenure types between the catchment area types, these differences are more pronounced between the three locational categories: downtown, inner-urban and outer urban areas. This suggests that families seeking to proceed in their housing career may

have to relocate in urban structure, but they do not necessarily have to move out of their neighbourhood type – in terms of its' socio-economic status – in order to find family-sized housing.

Table 1. Descriptive statistics on socio-economic and housing characteristics of the school catchment areas in Helsinki 2012/2015 (Data: Statistics Finland Grid Database; Municipal Building and Population Register).

[Table 1 here]

Figure 1. The location of school catchment areas in Helsinki.

[Figure 1 here]

Results

Increasing segregation of neighbourhoods and school catchment areas

Urban socio-spatial segregation has traditionally been moderate in Helsinki, compared to many other European cities (see e.g. Tammaru et al., 2016). However, during the last three decades socio-economic and ethnic differences have increased between urban neighbourhoods. The most notable change can be traced back to the 1990s and early 2000s (Figure 2) when the recession of the early 1990s and the following ICT-led boom changed the economic and labour-market structures: high-education has become an

important asset at the labour market, whilst the amount of low-skilled manual work has decreased. This has resulted in increases in structural long-term unemployment.

Increasing levels of immigration have further strengthened the socio-spatial segregation patterns, as most immigrants, particularly those coming from non-Western countries, have settled in neighbourhoods where socio-economic deprivation has been most visible (Kortteinen and Vaattovaara, 2015; Vilkama et al., 2014). Currently, 16 percent of the population, and 20 percent of children aged 0–15 years, have a foreign-background.

Figure 2 depicts the changes in urban segregation levels in Helsinki neighbourhoods in 1995–2015. The dissimilarity indices show a clear rise in both ethnic and income segregation especially between 1995–2005. Segregation by income and education are both notably higher than the level of ethnic segregation. This indicates that although spatial patterns of ethnic and socio-economic segregation are strongly overlapping (see also Saikkonen et al., 2018), it is foremost the socio-economic differentiation of neighbourhoods that characterises urban segregation in Helsinki.

The analysis also reveals high segregation amongst children compared to the population overall (see also Saikkonen et al., 2018). This resonates with former findings on families with children as the population group most concerned about socio-economic and ethnic characteristics when choosing a new place to live (Dhalmann et al., 2013;

Vilkama et al., 2016). Levels of segregation amongst children are pronounced both by family income and ethnicity.

Figure 2. Dissimilarity indexes in Helsinki, by income, education and ethnicity, in 1995–2015.

[Figure 2 here]

The longitudinal analysis shows that increasing urban segregation in neighbourhoods has had a direct impact on schools' socio-spatial context. Schools in Helsinki operate in a very different urban setting compared to early 1990s, and differences between school catchment areas have increased significantly. Figure 3 illustrates this by showing changes in value-adjusted average incomes (a), proportions of highly-educated (b), and proportions of residents with a foreign background (c) in school catchment areas from 1995–2011. Spatial disparities between the areas have grown noticeably despite generally increasing income and educational levels. At the same time, the rank order of the areas has remained fairly stable. In other words, those areas that were at the high-end or low-end of the income distribution or education level in 1995 have retained their position. There are a few exceptions to this rule due to new housing schemes and gentrification of some areas, but overall the upward or downward changes between areas have been scarce.

Figure 3. Spatial differences between the school catchment areas in 1995–2011: a) average income; b) proportions of highly-educated, and c) proportions of residents speaking other languages than Finnish or Swedish as mother tongue.

[Figure 3 here]

Similar processes of growing differences between catchment areas can be seen in the shares of residents with a foreign-background. However, due to the recent immigration history starting in the mid-1990s, patterns of ethnic spatial differentiation have begun to stabilise only in the latter part of the 2000s. The dissimilarity index shows a slight increase in ethnic segregation between neighbourhoods since 2005 (Figure 2). However, in absolute terms, the increase in spatial differentiation has been more notable, as shown in Figure 3c. The percentage of residents with a foreign background has increased rapidly particularly in many disadvantaged school catchment areas, and in some other areas, while at the other end of the spectrum there has been hardly any change.

Mobility patterns and mechanisms for increasing segregation

The analysis of mobility flows reveals patterns, which are clearly connected to the catchment area segregation. First of all, the data indicates that families with children are most mobile when children are very young. Moving propensity is at its highest among children under 2 years and quickly declines afterwards (Figure 4). The most notable

drop in mobility happens when children reach the school starting age of seven years. It thus seems that families try to optimise their housing choices before their children start school, and then prefer to stabilise.

Figure 4. The average annual percentage of children who moved house in 2005–2014 (i.e. moved out of their neighbourhood), by age group. The data includes Finnish-speaking children only.

[Figure 4 here]

This finding is not completely new; it has been indicated previously that families with school-aged children generally move less frequently than other households. It has also been demonstrated that when they do move, they prefer to move shorter distances to maintain the children's social and institutional networks (see e.g. Vilkkama et al., 2016). However, our data is the first to document the moving patterns *between* school catchment areas. The dataset excludes the moves which happen within the same neighbourhood, thus eliminating the effect of moves which may be chosen to maintain the same school and peer group for children. We are thus able to examine the decisions which may be tied to school choices, among other reasons for mobility, and document only the decisions which later affect school segregation through the changes in population composition of the catchment areas.

Further analysis of residential mobility flows show notable differences in the flow dynamics into and out of catchment areas. Although the overall pattern of higher mobility for families with small children is similar in most of the catchment areas, there are significant differences in net-mobility. Some school catchment areas lose Finnish-speaking children, while others attract significant numbers of newcomers. There is a clear difference in the migration flows of the most disadvantaged and the most well-to-do areas.

Figure 5 illustrates these differences by depicting the average net-mobility rates (%) separately for the under-school-aged children (Figures 5a and 5c) and school-aged children (Figures 5b and 5d) in the disadvantaged and the well-off areas respectively. Figures 5a–b show a clear loss of families with children in the most disadvantaged school catchment areas. These areas have systematically lost Finnish-speaking children in all age groups. Although the net-loss has been strongest among younger children, it is striking that most of these areas have also lost school-aged children in a way and at a scale not observed in the well-off areas. There are only three disadvantaged areas, which contrast this finding. Two of these areas are characterised by recent construction of new family housing and renewal of old housing estates, while the third, inner-urban area, has recently been going through a process of gentrification.

In the most well-off catchment areas, residential flows appear very different to the disadvantaged areas (Figures 5c–d). The mobility patterns of families with small children are more divided, which seems connected to the housing structure and market situation. Affluent catchment areas in downtown Helsinki, where large family housing is more rare and very expensive, have lost families with small children, apparently as families flow to neighbourhoods with larger units. At the same time, well-off neighbourhoods in the outer suburbs, characterised by large units, have gained substantial net-mobility of families with small children (Figure 5c). Secondly, in all but a few, the net-mobility of school-aged children has been positive, or close to neutral (Figure 5d). In other words, these areas have either gained more school-aged children than what has moved out, or the amount of in- and out-movers has been balanced. The well-off areas have housing and schools that are highly sought after, and they are able to attract a constant flow of newcomers to replace those that move elsewhere. It thus seems that in the most well-off school catchment areas, socio-economic and housing characteristics are both part of the explanation influencing the residential choices of families. The disadvantaged school catchment areas on the other hand have not succeeded in attracting sufficient numbers of Finnish-speaking families to replace those that have moved out, despite the availability of large and affordable family-sized housing.

The observed patterns of consistently rejecting or favouring certain types of school catchment areas are most significant at the extreme ends of the scale. In the “in-between” catchment areas the mobility flows of families with children are less systematic, showing both negative and positive net-mobility flows.

Figure 5. Average net-mobility (%) of 0–6-year-old children (a) and school-aged children (b) in the disadvantaged school catchment areas, and 0–6-year-old children (c) and school-aged children (d) in the well-off school catchment areas, in 2005–2014. Mobility flows of school-aged children are presented in the same spatial order as the flows of small children to enable catchment area comparisons.

[Figure 5 here]

A closer look into the mobility flows reveals that the patterns described above have been fairly stable from 2005–2014 (Figure 6). Although there have been clear annual fluctuations in net-mobility in some areas, the overall patterns have remained relatively unchanged. In the disadvantaged areas the net-mobility flows have been predominantly negative throughout the ten-year period, with the few aforementioned exceptions. Although there are no signs of accelerating mobility out of these areas, the loss of Finnish-speaking families with children has been systematic (Figures 6a and 6b).

In the most well-off catchment areas the annual mobility flows have been slightly more stable (Figures 6c and 6d): the areas with net-gains or net-losses have kept their relative position, and no big changes in mobility trends can be noticed.

Figure 6 a–d. Annual net-mobility rates (%) of 0–6-year-old children (a) and school-aged children (b) in the disadvantaged school catchment areas, and 0–6-year-old children (c) and school-aged children (d) in the well-off school catchment areas, in 2005–2014. Each line represents one school catchment area and its' average net-mobility rate among small and school-aged children.

[Figure 6 here]

The uneven spatial patterns in the residential mobility of families with children, and the relative stability of these flows, suggest that school catchment area development and residential choices are closely interconnected. Families with children choose between areas in their search for suitable housing and a good place to raise children. Their choices have the capacity to both reproduce and exacerbate segregation patterns between schools and catchment areas, yet at the same time these very patterns also influence the choices they make. Although there are no signs of accelerating differences in the mobility flows, the stability of the net-losses in some areas and the net-gains in others keeps shaping the socio-spatial landscape of the city and increases the social differences between the areas year by year.

Previous studies on urban segregation in Helsinki have indicated that there is an association between segregation, schools and residential mobility. Although housing-related reasons are, by far, the most important reasons for moving, it has been demonstrated that increasing levels of neighbourhood segregation are connected to processes of selective mobility also in the Helsinki context (e.g. Kauppinen and van Ham, 2018; Vilkama, 2011; Vilkama et al., 2016). Our results confirm these findings and highlight the importance of school catchment area boundaries for the processes of urban segregation.

Discussion and conclusions

Our findings elaborate the closely weaved links in a “two-way relationship between schooling and geography” (Gordon and Monastiriotis, 2007) in the Nordic context. The results emphasize the role of school catchment areas as geographical boundaries mediating this relationship, even when the institutional differences between schools are themselves small. Owens (2017: 77) describes the shaping of the relationship in the U.S. context by stating: “Neighborhood residence is often pointed to as an explanation for school segregation, but concerns about schooling also contribute to neighborhood segregation. Parents consider trade-offs across school districts, neighborhoods, schools, and housing units when making residential decisions.” Our findings appear constant in the nature of these dynamics also in the case of a stronger welfare state, universalist

educational policies and relatively moderate segregation, although the magnitude of effect varies.

In the case of Helsinki, increasing socio-spatial segregation impacts the catchment area characteristics, affecting the level of school segregation through student allocation.

School and catchment area segregation, in turn, are linked to the residential decisions of families with children. This finding is consistent with former studies on school choice, and the same drivers appear to influence residential choices (e.g. Bernelius, 2013; Kosunen, 2016). It is notable that in our results, the patterns emerge relatively strong even though the analysis is concentrated only on residential mobility of the native Finnish families as such, without further information on their socio-economic status. More detailed information might show even more polarized patterns of mobility, as suggested by the findings on the middle-class motivations in social reproduction (see e.g. Ball, 2003; Maloutas and Ramos Lobato, 2015; Raveaud and Van Zanten, 2007).

The analysis of the growth in socio-spatial segregation in both the city and its school catchment areas in the recent decades documents the consistent nature of effects of urban development on schools. The neighbourhood development directly affects the environment where the schools operate, connecting educational outcomes to local processes of social change and the accumulation of disadvantage. The central observation in this analysis is that the development pathways appear to be fairly stable,

with a strong path dependency on the rank order of the catchment areas. This tendency is something, with which urban and school policies targeted at underprivileged schools should be very sensitive.

The relevance of socio-spatial segregation analysis for neighbourhood and school policies is further emphasised by the observed segregation patterns of children. As the segregation indices are higher for children than for the general population, the overall segregation level is amplified in the school-aged population and in schools. Compared to other demographic groups, families with children are more sensitive to neighbourhood composition when selecting a new neighbourhood (Owens, 2017). This means that cities should be extremely diligent in schools and catchment areas not only in educational policies, but also urban policies. The way in which these institutions and institutional boundaries are organised, may have a profound effect in shaping the segregation of children and their social and educational environment. For example, U.S. studies have suggested to desegregate the catchment areas through analytical redrawing of the boundaries as one way to reduce school segregation (Monarrez, 2018; Richards, 2014). So far European studies have not modeled the possibilities of these strategies at a larger scale, but this policy tool might be a valuable addition to other anti-segregation policies.

The observed dynamics of mobility patterns consistently reproduce the inequalities between catchment areas. Although choices in residential mobility reflect multiple factors, such as changes in family situations, housing needs and the desire for certain neighbourhood qualities, school catchment areas are linked to the residential mobility patterns of the native Finnish families with children in several systematic ways.

Firstly, between-catchment area mobility depends on the age of children, as moving house is most common when the children are small. When children reach school age, there is a quick and permanent drop in moves between catchment areas. This appears to confirm the suggestion that families attempt to stabilise their children's social environment and educational paths well before children start school. Later mobility is more likely within the same catchment area. This observation carries significant policy relevance, as families who do not yet have school-aged children actually appear to be central for school-related residential segregation. Their mobility decisions are shaping the geography of the socio-economic spatial and school segregation, which becomes visible later when children start school. Reflecting on the title of our paper, this, in fact, means that *pupils are on the move before they even become pupils*.

Secondly, residential decisions are linked to school segregation through systematic favouring or rejection of the catchment areas depending on their socio-economic and housing characteristics, which carries significance both for the nature of school and

neighbourhood segregation. The most well-off catchment areas are mostly favoured in the residential choices. The exclusive inner-city neighbourhoods with predominantly smaller apartments appear to be an exception to this, probably as many growing families are unable to find or afford a larger home in these neighbourhoods. However, the prestigious, socio-economically well-off catchment areas in the suburban parts of the city, which are characterised with larger houses and apartments, are systematically winners in the net-mobility flows. While the geographical location of the prestigious neighbourhoods within the urban network varies between cities, the pattern where mobility is directed towards areas with higher status seems transferable between contexts also in the Nordic welfare city characterized with policies of strong social mixing, resonating to a description by Atkinson (2006: 820): "These forces appear to reveal deep inclinations towards segregation based on desires for social homogeneity and the predictability and safety that this is perceived to engender."

Preferences on the privileged catchment areas become especially evident when contrasting them to the most disadvantaged areas. While the mobility rates stabilize particularly strongly in the well-off areas after children start school, the same pattern is absent in most of the disadvantaged areas. Here the outwards mobility of the Finnish families remains higher than the inwards mobility for all age groups of children. The pattern results in a dual disadvantage for these catchment areas: while they have the poorest socio-economic characteristics to start with, they also lose majority population

throughout the years the children are in school. Combined with the previous results concerning school choices outside childrens' own catchment areas, where schools in disadvantaged neighbourhoods are systematically rejected (Bernelius, 2013; Bernelius and Vaattovaara, 2016), we can see a strong pattern of self-perpetuating segregation plaguing the most disadvantaged neighbourhoods and their schools.

To conclude, the results draw a picture of dynamics of segregation through school-related residential mobility and the role of catchment areas as mediators in the process. As Helsinki offers a case where the institutional quality differences as drivers of segregation are minimised, the findings reveal some persistent socio-economic drivers of self-perpetuating segregation potentially relevant for multiple contexts. The observations also raise several considerations for comprehensive urban and educational policies. The observed path dependency, or stability in the rank order of areas, highlights the need for policies which are sensitive to local challenges and to the long-term forces shaping the local situation. These observations are further emphasized by the fact that children appear to be more segregated than adults also in this context. In the urban policies targeting neighbourhood and school segregation, our results imply a need to focus on the effects that catchment area segregation may have on shaping the patterns throughout the whole city, as the process of sorting through residential mobility spans across all neighbourhoods.

A practical implication may be to consider the way the boundaries of school catchment areas are drawn within the city, as this may affect the initial socio-economic structure within the area, as well as the future mobility patterns to and from the catchment areas. Furthermore, school and neighbourhood policies should be sensitive to the finding that families whose children are not yet at school are the most active group seeking neighbourhoods to raise their children in, shaping the future catchment area and school segregation. If families are considered only when children become older, the patterns of socio-economic segregation in the catchment areas have already more or less stabilized through prior sorting.

Finally, at the neighbourhood level, the most pressing questions are related to the disadvantaged neighbourhoods, where the outflow of families with children of all ages highlights the urgency for supporting both neighbourhoods and the local schools. The documented self-perpetuating nature of segregation and loss of school-aged Finnish children in disadvantaged neighbourhoods suggests that having a universally high quality of institutions and support for individual families is not enough for combating the complex processes of segregation. As the local development trajectories appear “sticky” in their path dependency and self-perpetuating social dynamics, the welfare measures aiming to combat segregation have to be able to overthrow the effects in both the school and neighbourhood to change their course.

Acknowledgments

We would like to sincerely thank the two anonymous reviewers for their insightful comments, the city of Helsinki for providing the data for the mobility analyses, and Heini Kekki and Hertta Sydänlammi for their valuable assistance in data management.

Literature

Andersson R (2013) Reproducing and reshaping ethnic residential segregation in Stockholm: the role of selective migration moves. *Geografiska Annaler B* 95(2): 163–187.

Andersson E, Östh J and Malmberg B (2010) Ethnic segregation and performance inequality in the Swedish school system: A regional perspective. *Environment and Planning A* 42(11): 2674–2686.

Atkinson, R. (2006). Padding the Bunker: Strategies of Middle-class Disaffiliation and Colonisation in the City. *Urban Studies*, 43(4), 819–832.

Ball SJ, Bowe R and Gewirtz S (1996) School choice, social class and distinction: the realization of social advantage in education. *Journal of Education Policy* 12(1): 89–112.

Bernelius V (2013) Eriytyvät kaupunkikoulut. Helsingin peruskoulujen oppilaspohjan erot, perheiden kouluvalinnat ja oppimistuloksiin liittyvät aluevaikutukset osana

kaupungin eriytymiskehitystä. *Tutkimuksia* 2013:1. Helsinki: Helsingin kaupungin tietokeskus.

Bernelius V and Vaattovaara M (2016) Choice and segregation in the ‘most egalitarian’ schools: Cumulative decline in urban schools and neighbourhoods of Helsinki, Finland. *Urban Studies* 53(15): 3155–3171.

Boterman, WR (XXXX) REFERENCE TO THIS JOURNAL TO BE ADDED

Boterman, WR (2013) Dealing with diversity. Middle-class family households and the issue of ‘black’ and ‘white’ schools in Amsterdam. *Urban Studies* 50(5): 1130–1147.

Bridge, G (2006) It’s not just a question of taste: Gentrification, the neighbourhood and cultural capital. *Environment and Planning A* 38(10): 1965–1978.

Brown L & Moore E (1970) The intra-urban migration process: A perspective. *Geografiska Annaler B* 52(1): 1–13.

Butler T and Hamnett C (2007) The Geography of education: Introduction. *Urban Studies* 44(7): 1161–1174.

Butler T and Robson G (2003) Plotting the middle classes: Gentrification and circuits of education in London. *Housing Studies* 18(1): 5–28.

- Byrne B (2006) In search of a 'good mix': 'Race', class, gender and practices of mothering. *Sociology* 40(6): 1001–1017.
- Cheshire PC and Sheppard SC (2004) Capitalising the value of free schools: the impact of supply characteristics and uncertainty. *Economic Journal* 114(499): 397–424.
- Dhalmann H, Vaattovaara M and Vilkama K (2013) Hyvää kasvuympäristöä etsimässä. Asuinalueen ja koulun merkitys lapsiperheiden muuttopäätöksille pääkaupunkiseudulla. *Yhdyskuntasuunnittelu* 51(4): 11–29.
- Gordon, I., & Monastiriotis, V. (2007). Education, Location, Education: A Spatial Analysis of English Secondary School Public Examination Results. *Urban Studies*, 44(7), 1203–1228.
- Hamnett C and Butler T (2013) Distance, education and inequality. *Comparative Education* 49(3): 317–330.
- Harjunen O, Kortelainen M and Saarimaa T (2018) Best education money can buy? Capitalization of school quality in Finland. *CESifo Economic Studies* (Working papers). Published 23 January 2018.
- Karsten S, Ledoux G, Roeleveld J, Felix C and Elshof D (2003) School choice and ethnic segregation. *Educational Policy* 17(4): 452–477.

Kauppinen TM and van Ham M (forthcoming) Unravelling the demographic dynamics of ethnic residential segregation.

Kortteinen M and Vaattovaara M (2015) Segregation aika. *Yhteiskuntapolitiikka* 80(6): 562–574.

Kosunen, S (2016) *Families and the social space of school choice in urban Finland*. PhD Thesis. University of Helsinki, Finland.

Kosunen S, Bernelius V, Seppänen P and Porkka M (2016) School choice to lower secondary schools and mechanisms of segregation in urban Finland. *Urban Education*. Epub ahead of print 21 October 2016. DOI: [10.1177/0042085916666933](https://doi.org/10.1177/0042085916666933).

Maloutas, T., & Lobato, I. R. (2015). Education and social reproduction: Educational mechanisms and residential segregation in Athens and Dortmund. *Local Economy*, 30(7), 800–817.

Monarrez, T. (2018) Attendance Boundary Policy and the Segregation of Public Schools in the United States

Musterd S, van Gent W, Das M and Latten J (2016) Adaptive behaviour in urban space: Residential mobility in response to social distance. *Urban Studies* 53(2): 227–246.

Nieuwenhuis J and Hooimeijer P (2015) The association between neighbourhoods and educational achievement, a systematic review and meta-analysis. *Journal of Housing and the Built Environment* 31(2): 321–347.

Noreisch K (2007) Choice as rule, exception and coincidence: Parents' understandings of catchment areas in Berlin. *Urban Studies* 44(7): 1307–1328.

OECD (2013) PISA 2012 Results: Excellence Through Equity: Giving Every Student the Chance to Succeed (Volume II), PISA, OECD Publishing.

Owens A (2017) “Racial Residential Segregation of School-Age Children and Adults: The Role of Schooling as a Segregating Force“, *RSF: The Russell Sage Foundation Journal of the Social Sciences*, 3(2), 63–80.

Raveaud M and van Zanten A (2007) Choosing the local school: middle class parents' values and social and ethnic mix in London and Paris. *Journal of Education Policy* 22(1): 107–124.

Richards, M. P. (2014). The Gerrymandering of School Attendance Zones and the Segregation of Public Schools: A Geospatial Analysis. *American Educational Research Journal*, 51(6), 1119–1157.

Rossi P H (1955) Why families move. Beverly Hills: Sage Publications.

Saikkonen P, Hannikainen K, Kauppinen TM, Rasinkangas J and Vaalavuo M (2018) Sosiaalinen kestävyys: asuminen, segregatio ja tuloerot kolmella kaupunkiseudulla. *Raportteja 2/2018*. Helsinki: Terveyden ja hyvinvoinnin laitos.

Seppänen P (2006) Kouluvalintapolitiikka perusopetuksessa – suomalaiskaupunkien koulumarkkinat kansainvälisessä valossa [School Choice Policy in Basic Education – The School Markets in Finnish Cities in International Perspective]. *Kasvatusalan tutkimuksia*. Turku: Suomen kasvatustieteellinen seura.

Tammaru T, Marcinczak S, van Ham M and Musterd S (2016) *Socio-Economic Segregation in European Capital Cities: East Meets West*. London: Routledge.

Vaattovaara M and Kortteinen M (2003) Beyond polarization versus professionalisation? A case study of the development of the Helsinki region, Finland. *Urban Studies* 40(11): 2127–2145.

Vilkama K (2011) Yhteinen kaupunki, eriytyvät kaupunginosat? Kantaväestön ja maahanmuuttajataustaisten asukkaiden alueellinen eriytyminen ja muuttoliike pääkaupunkiseudulla. *Tutkimuksia* 2011:2. Helsinki: Helsingin kaupungin tietokeskus.

Vilkama K, Ahola S and Vaattovaara M (2016) Välttelyä vai vetovoimaa? Asuinympäristön vaikutus asuinalueilla viihtymiseen ja muuttopäätöksiin pääkaupunkiseudulla. *Tutkimuksia* 2016:4. Helsinki: Helsingin kaupungin tietokeskus.

Vilkama K and Lönnqvist H (2014) Are sociospatial differences cast in concrete? Quarterly 2014(4): 44–53.

Vilkama K, Lönnqvist H, Väliniemi-Laurson J and Tuominen M (2014) Erilaistuva pääkaupunkiseutu. Sosioekonomiset erot alueittain 2002–2012. *Tutkimuksia* 2014:1. Helsinki: Helsingin kaupungin tietokeskus.

Vincent, C, Braun A and Ball S (2010) Local links, local knowledge: Choosing care settings and schools. *British Educational Research Journal* 36(2): 279–298.

Figures

Figure 1. The location of school catchment areas in Helsinki.

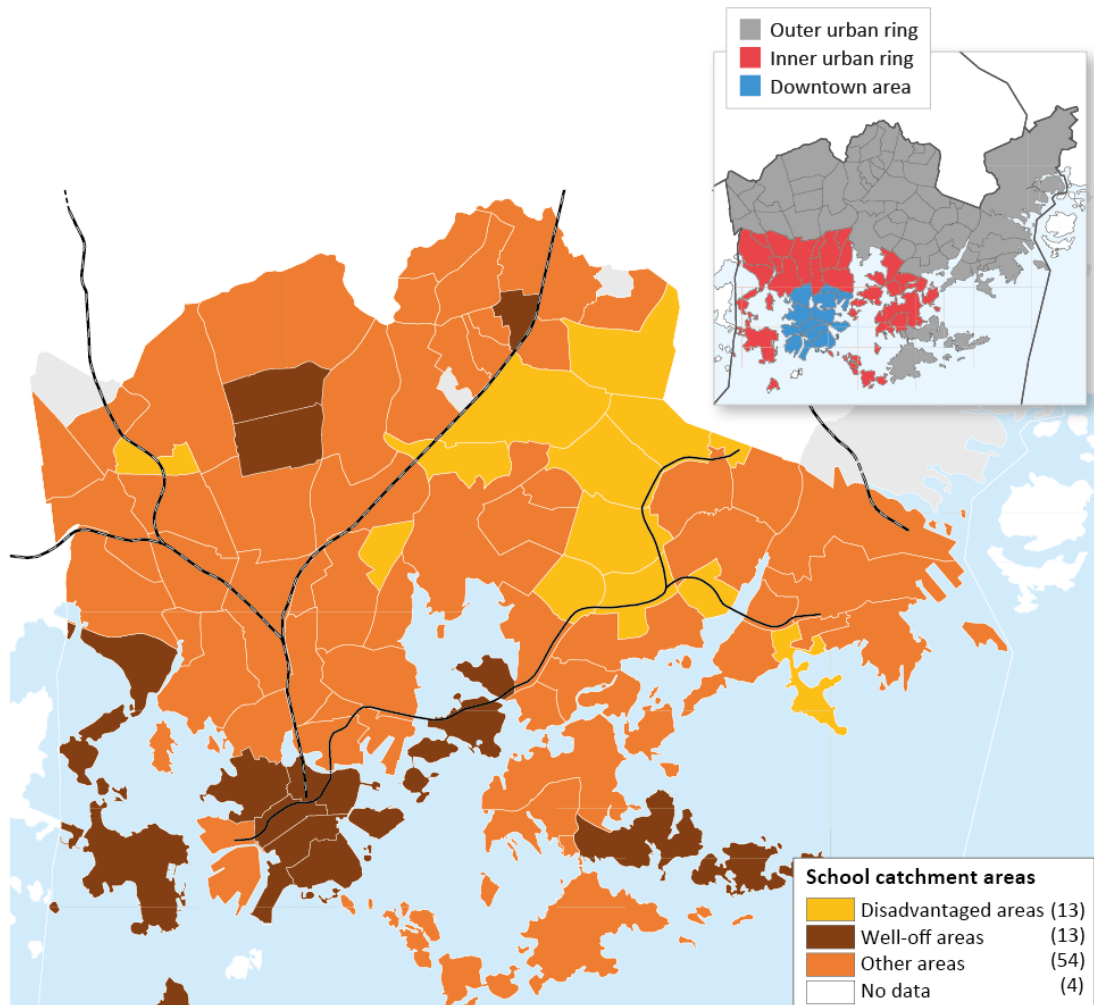


Figure 2. Dissimilarity indexes in Helsinki, by income, education and ethnicity, in 1995–2015.

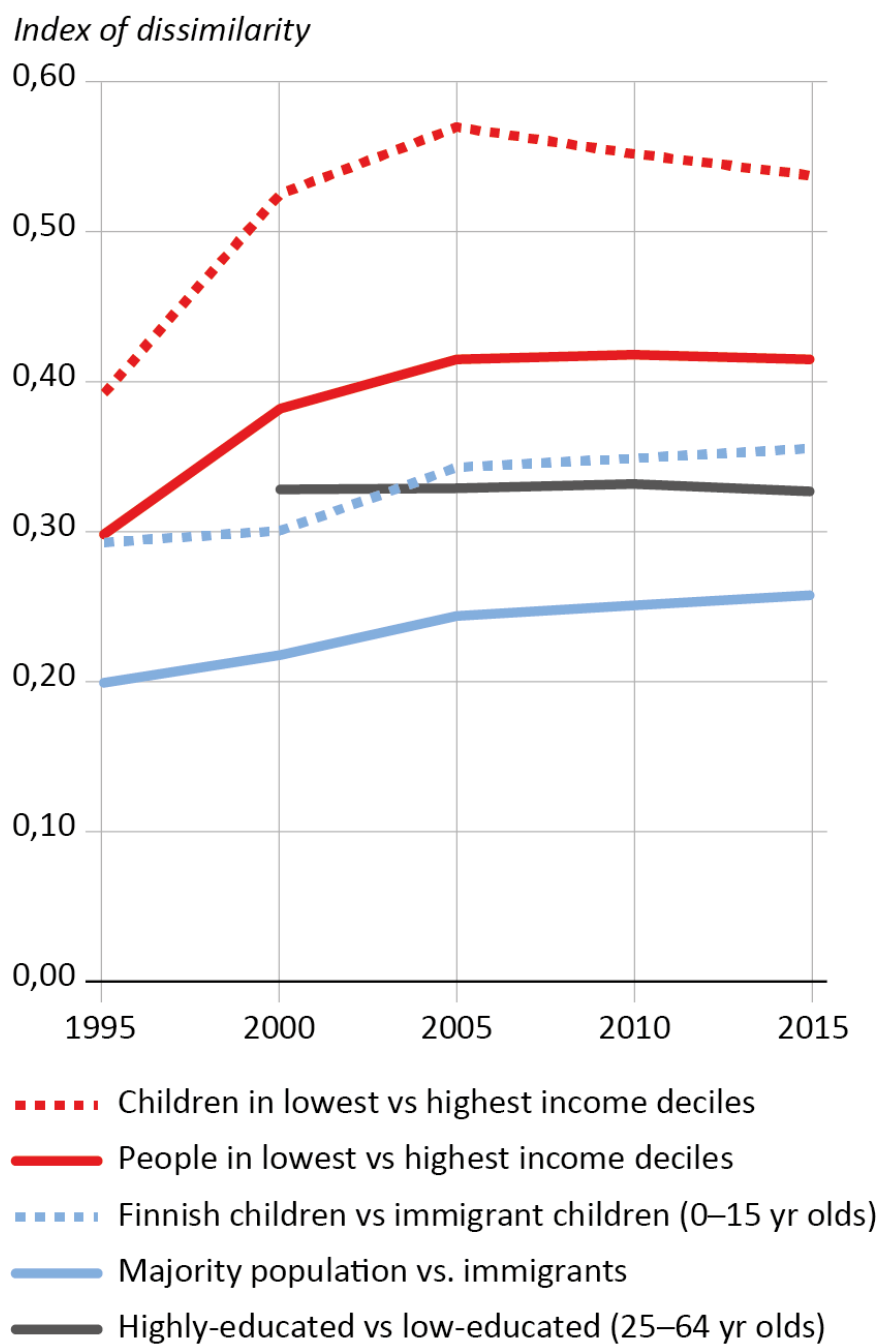


Figure 3. Spatial differences between the school catchment areas in 1995–2011: a) average income; b) proportions of highly-educated, and c) proportions of residents speaking other languages than Finnish or Swedish as mother tongue.

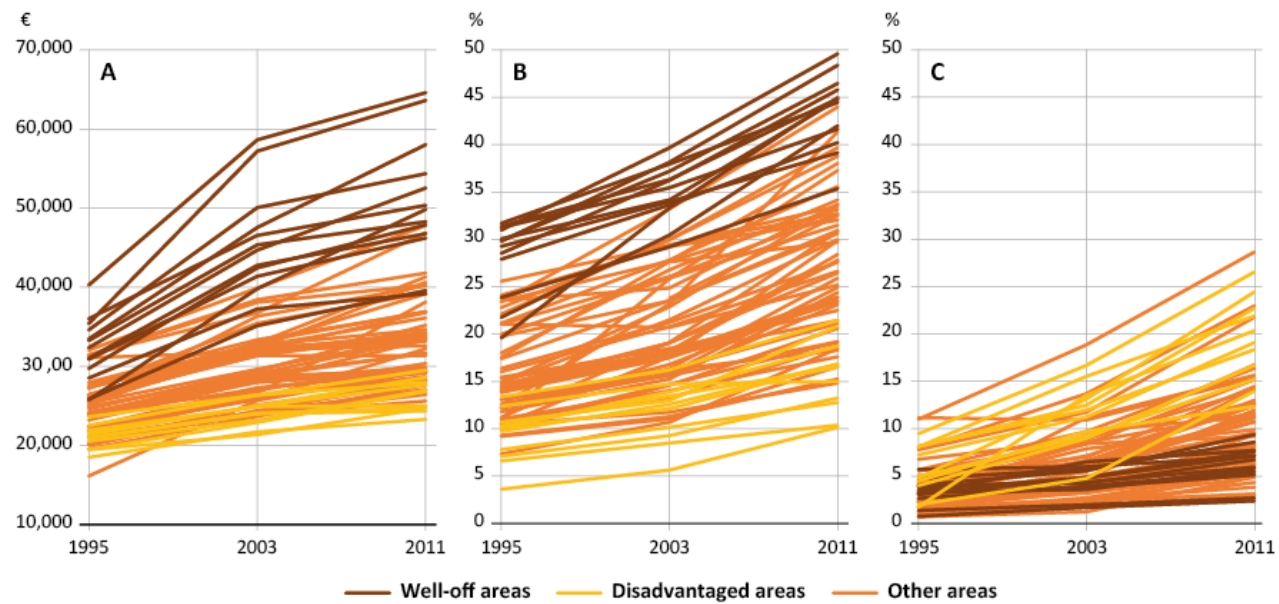


Figure 4. The average annual percentage of children who moved house in 2005–2014 (i.e. moved out of their neighbourhood), by age group. The data includes Finnish-speaking children only.

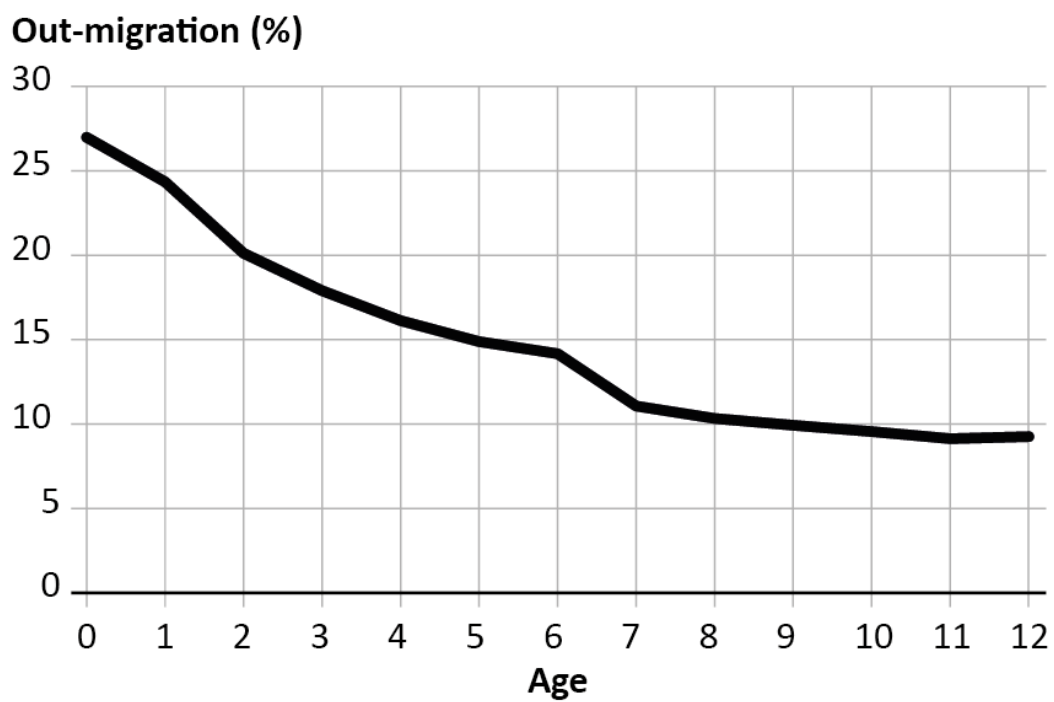


Figure 5. Average net-mobility (%) of 0–6-year-old children (a) and school-aged children (b) in the disadvantaged school catchment areas, and 0–6-year-old children (c) and school-aged children (d) in the well-off school catchment areas, in 2005–2014. Mobility flows of school-aged children are presented in the same spatial order as the flows of small children to enable catchment area comparisons.

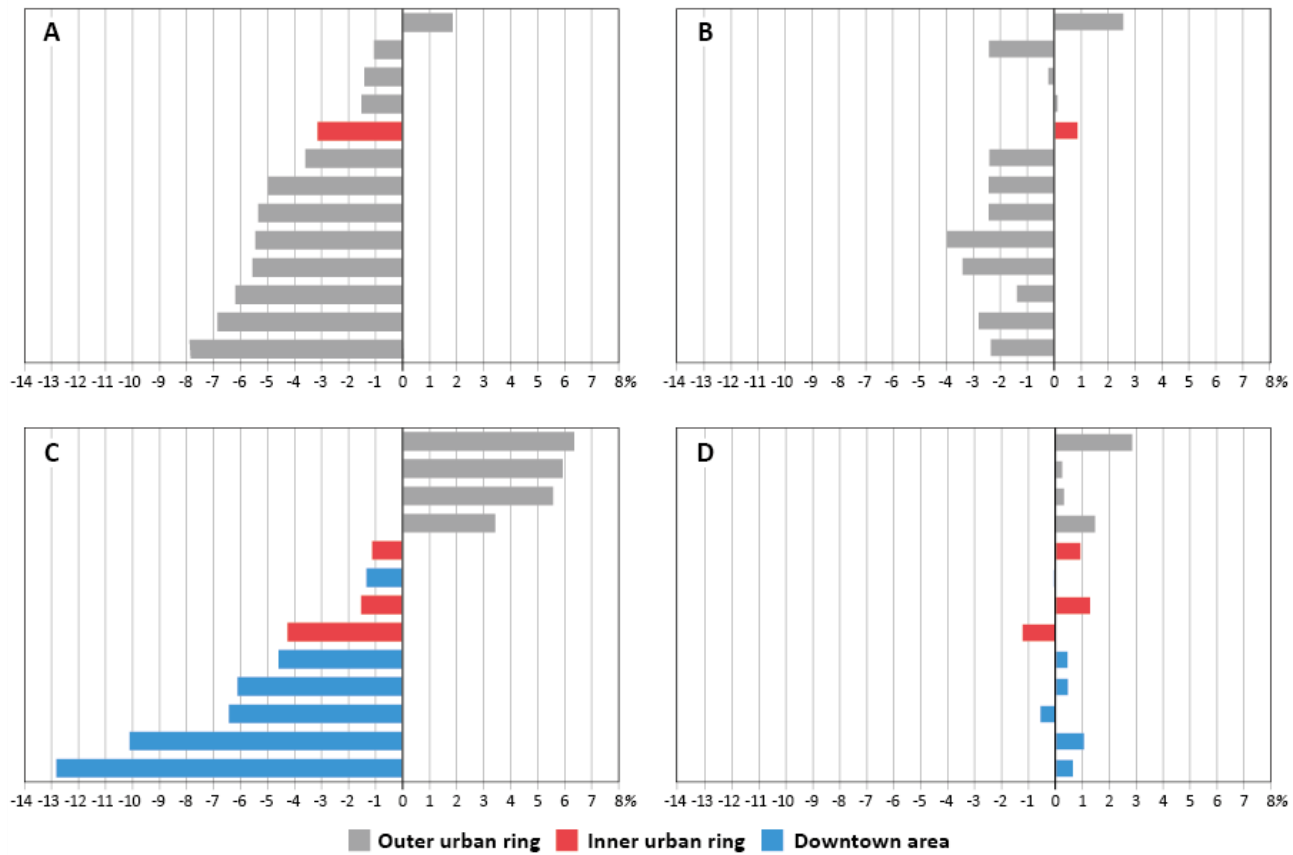


Figure 6 a–d. Annual net-mobility rates (%) of 0–6-year-old children (a) and school-aged children (b) in the disadvantaged school catchment areas, and 0–6-year-old children (c) and school-aged children (d) in the well-off school catchment areas, in 2005–2014. Each line represents one school catchment area and its’ average net-mobility rate among small and under-school-aged children.

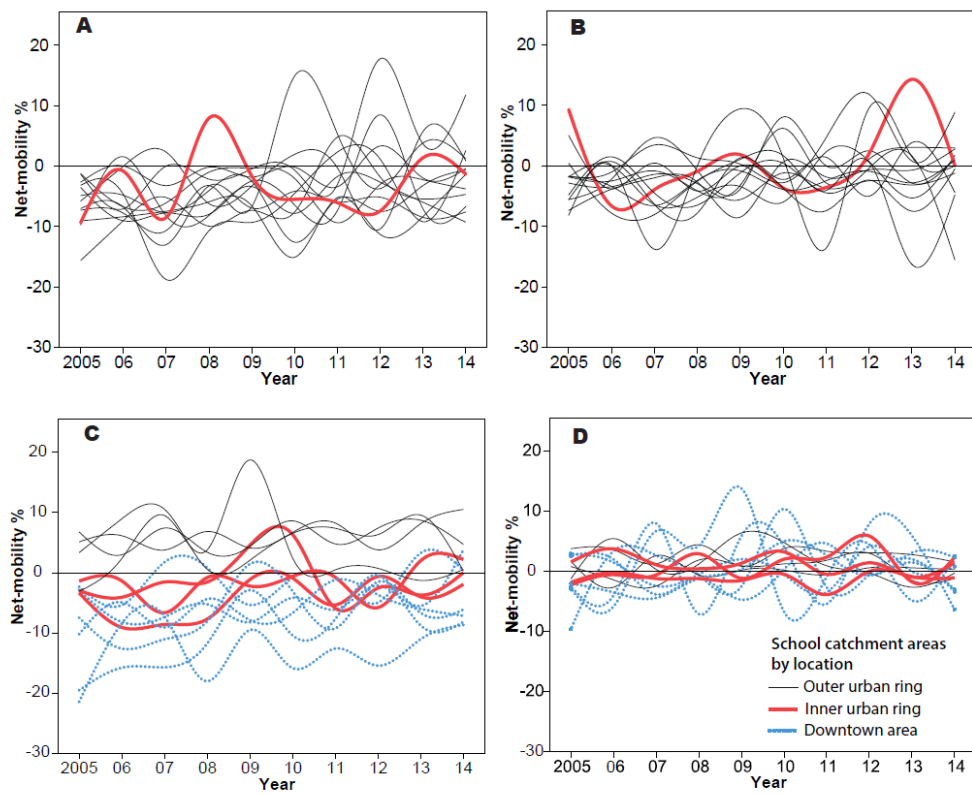


Table 1. Descriptive statistics on socio-economic and housing characteristics of the school catchment areas in Helsinki 2012/2015. (Data: Statistics Finland Grid Database; Municipal Building and Population Register).

Catchment areas	Data type	Indicators	Areas				Std. Deviation
			(N)	Mean	Minimum	Maximum	
Disadvantaged areas	Demographic data	Population (N)	13	5 974	2 646	11 637	2 670
		Low-educated adults (%)	13	41	35	51	4
		Average income (€)	13	22 367	19 770	24 523	1 479
	Housing data	Share of immigrants (%)	13	28	16	43	8
		Dwellings (N)	13	3 359	1 486	5 681	1 446
		Share of multifamily housing (%)	13	92	76	98	7
		Share of detached housing (%)	13	8	2	24	7
		Share of family-sized housing units (%) (3 bedrooms or more)	13	16	11	23	4
		Share of owner-occupying households (%)	13	35	13	50	12
		Share of renting households (%)	13	63	47	86	12
Share of housing units built after year 2000 (%)	13	11	0	26	9		
Other areas	Demographic data	Population (N)	54	6 657	483	21 474	3 888
		Low-educated adults (%)	54	28	15	40	6
		Average income (€)	54	29 295	21 813	52 030	5 697
		Share of immigrants (%)	53	16	0	49	12
	Housing data	Dwellings (N)	54	4 096	301	16 458	2 944
		Share of multifamily housing (%)	54	79	14	100	23
		Share of detached housing (%)	54	21	0	86	23
		Share of family-sized housing units (%) (3 bedrooms or more)	54	21	3	53	12
		Share of owner-occupying households (%)	54	49	30	79	14
		Share of renting households (%)	54	49	18	70	14

		Share of housing units built after year 2000 (%)	54	20	0	100	23
Well-off areas	Demographic data	Population (N)	13 8 584	2 041	19 668	5 253	
		Low-educated adults (%)	13 18	15	22	2	
		Average income (€)	13 47 687	34 162	67 034	9 859	
	Housing data	Share of immigrants (%)	13 7	1	31	8	
		Dwellings (N)	13 5 607	1 107	13 443	4 002	
		Share of multifamily housing (%)	13 70	2	100	41	
		Share of detached housing (%)	13 30	0	98	41	
		Share of family-sized housing units (%) (3 bedrooms or more)	13 31	8	68	20	
		Share of owner-occupying households (%)	13 61	43	89	15	
		Share of renting households (%)	13 35	6	54	15	
	Share of housing units built after year 2000 (%)	13 8	1	18	6		

