



THE UNIVERSITY *of* EDINBURGH

Edinburgh Research Explorer

Impact of Maternal HIV Infection and Placental Malaria on the Transplacental Transfer of Influenza Antibodies in Mother-Infant Pairs in Malawi, 2013-2014

Citation for published version:

Ho, A, Mapurisa, G, Madanitsa, M, Kalilani-Phiri, L, Kamiza, S, Makanani, B, Ter Kuile, FO, Buys, A, Treurnicht, F, Everett, D, Mwapasa, V, Widdowson, M-A, Mcmorrow, M & Heyderman, RS 2019, 'Impact of Maternal HIV Infection and Placental Malaria on the Transplacental Transfer of Influenza Antibodies in Mother-Infant Pairs in Malawi, 2013-2014', *Open forum infectious diseases*, vol. 6, no. 10, pp. ofz383. <https://doi.org/10.1093/ofid/ofz383>

Digital Object Identifier (DOI):

[10.1093/ofid/ofz383](https://doi.org/10.1093/ofid/ofz383)

Link:

[Link to publication record in Edinburgh Research Explorer](#)

Document Version:

Publisher's PDF, also known as Version of record

Published In:

Open forum infectious diseases

Publisher Rights Statement:

This is an open access article distributed under the terms of the Creative Commons CC BY license, which permits unrestricted use, distribution, and reproduction in any medium, provided the original work is properly cited.

You are not required to obtain permission to reuse this article.

General rights

Copyright for the publications made accessible via the Edinburgh Research Explorer is retained by the author(s) and / or other copyright owners and it is a condition of accessing these publications that users recognise and abide by the legal requirements associated with these rights.

Take down policy

The University of Edinburgh has made every reasonable effort to ensure that Edinburgh Research Explorer content complies with UK legislation. If you believe that the public display of this file breaches copyright please contact openaccess@ed.ac.uk providing details, and we will remove access to the work immediately and investigate your claim.



Impact of Maternal HIV Infection and Placental Malaria on the Transplacental Transfer of Influenza Antibodies in Mother–Infant Pairs in Malawi, 2013–2014

Antonia Ho,^{1,2,3,*} Gugulethu Mapurisa,^{2,*} Mwayiwawo Madanitsa,^{4,*} Linda Kalilani-Phiri,⁴ Steve Kamiza,⁴ B Makanani,⁵ Feiko O. Ter Kuile,⁶ Amelia Buys,⁷ Florette Treurnicht,^{7,8} Dean Everett,^{2,9} Victor Mwapasa,³ Marc-Alain Widdowson,¹⁰ Meredith McMorrow,¹¹ and Robert S. Heyderman^{2,12}

¹MRC-University of Glasgow Centre for Virus Research, Glasgow, UK; ²Malawi-Liverpool-Wellcome Trust Clinical Research Programme, Blantyre, Malawi; ³Institute of Infection and Global Health, University of Liverpool, Liverpool, UK; ⁴University of Malawi College of Medicine, Blantyre, Malawi; ⁵Department of Obstetrics, Queen Elizabeth Central Hospital, Blantyre, Malawi; ⁶Liverpool School of Tropical Medicine, Pembroke Place, Liverpool, UK; ⁷Centre for Respiratory Diseases and Meningitis, National Institute for Communicable Diseases of the National Health Laboratory Service, Sandringham, South Africa; ⁸Department of Medical Virology, School of Pathology, Faculty of Health Sciences, University of the Witwatersrand, Johannesburg, South Africa; ⁹MRC Centre for Inflammation Research, University of Edinburgh, Edinburgh, UK; ¹⁰Division of Global Health Protection, CDC Kenya, Kenya; ¹¹Influenza Division, US Centers for Disease Control and Prevention, Atlanta, Georgia; ¹²Division of Infection and Immunity, University College London, London, UK

Background. Maternal influenza vaccination protects infants against influenza virus infection. Impaired transplacental transfer of influenza antibodies may reduce this protection.

Methods. We conducted a cross-sectional study of influenza vaccine-naïve pregnant women recruited at delivery from Blantyre (urban, low malaria transmission) and Chikwawa (rural, high malaria transmission) in Southern Malawi. HIV-infected mothers were excluded in Chikwawa. Maternal and cord blood antibodies against circulating influenza strains A/California/7/2009, A/Victoria/361/2011, B/Brisbane/60/2008, and B/Wisconsin/1/2010 were measured by hemagglutination inhibition (HAI). We studied the impact of maternal HIV infection and placental malaria on influenza antibody levels in mother–infant pairs in Blantyre and Chikwawa, respectively.

Results. We included 454 mother–infant pairs (Blantyre, n = 253; Chikwawa, n = 201). HIV-infected mothers and their infants had lower seropositivity (HAI titer $\geq 1:40$) against influenza A(H1N1)pdm09 (mothers, 24.3 vs 45.4%; $P = .02$; infants, 24.3 vs 50.5%; $P = .003$) and A(H3N2) (mothers, 37.8% vs 63.9%; $P = .003$; infants, 43.2 vs 64.8%; $P = .01$), whereas placental malaria had an inconsistent effect on maternal and infant seropositivity. In multivariable analyses, maternal HIV infection was associated with reduced infant seropositivity (A(H1N1)pdm09: adjusted odds ratio [aOR], 0.34; 95% confidence interval [CI], 0.15–0.79; A(H3N2): aOR, 0.43; 95% CI, 0.21–0.89). Transplacental transfer was not impaired by maternal HIV or placental malaria.

Conclusions. Maternal HIV infection influenced maternal antibody response to influenza A virus infection, and thereby antibody levels in newborns, but did not affect transplacental antibody transfer.

Keywords. influenza; HIV; malaria; antibodies; transplacental transfer.

Pregnant women and infants under 6 months are at increased risk of severe influenza complications [1]. During the 2009 influenza A(H1N1) pandemic, pregnant women had higher rates of hospital and intensive care admissions [2, 3], as well as a 5-fold higher risk of death [4], compared with nongravid women. Some studies of pregnancy outcomes have suggested increased an risk of pregnancy complications attributable to maternal influenza illness; others have not [5]. The World Health Organization (WHO)

designated pregnant women as the highest priority for influenza vaccination [6], though few low- and middle-income countries have vaccination programs targeted at pregnant women [7].

Recent randomized trials have shown that influenza vaccination in pregnancy not only protects the mother but also protects young infants against influenza and its complications [8, 9]. This is partly due to the reduced risk of maternal infection and transmission to the infant and partly due to active transplacental transfer of maternal antibodies generated from immunization [10]. The latter is crucial for infants <6 months, who have higher rates of influenza-associated hospitalization [11] but are ineligible to receive influenza vaccines [12].

HIV infection and malaria are prevalent in sub-Saharan Africa; maternal HIV infection and placental malaria have been associated with impaired transplacental transfer of maternal antibodies against a number of vaccine-preventable diseases including tetanus, measles, and *Streptococcus pneumoniae* [13–16]. HIV-infected pregnant women are an important target

Received 10 June 2019; editorial decision 21 August 2019; accepted 26 August 2019.

*Equal contribution

Correspondence: A. Ho, MBChB, PhD, MRC-University of Glasgow Centre for Virus Research, Sir Henry Wellcome Building, 464 Bearsden Road, Glasgow G61 1QE, United Kingdom (antonia.ho@glasgow.ac.uk).

Open Forum Infectious Diseases®

© The Author(s) 2019. Published by Oxford University Press on behalf of Infectious Diseases Society of America. This is an Open Access article distributed under the terms of the Creative Commons Attribution License (<http://creativecommons.org/licenses/by/4.0/>), which permits unrestricted reuse, distribution, and reproduction in any medium, provided the original work is properly cited. DOI: 10.1093/ofid/ofz383

group for influenza vaccination, as HIV-infected adults [17] and pregnant women [18] have greater risk of severe influenza, whereas the impact of malaria co-infection is poorly studied [19]. Before implementing maternal influenza vaccination in this region, the effects of maternal HIV and placental malaria on maternal and newborn humoral immunity against influenza, as well as their potential impact on the efficacy of antenatal influenza vaccination, require evaluation. A randomized trial of inactivated influenza vaccine in pregnant women found lower seroconversion to all vaccine strains in HIV-infected mothers, compared with HIV-uninfected mothers, but the efficiency of transplacental antibody transfer was similar [20]. No studies to date have evaluated the effect of placental malaria on maternal-fetal transfer of influenza antibodies.

We investigated the effect of maternal HIV infection and placental malaria on influenza antibody levels in unvaccinated pregnant women and their newborns in Malawi, a high-HIV and -malaria prevalence setting.

METHODS

Study Design and Setting

Between January 2013 and February 2014, we undertook a cross-sectional study of mother-newborn pairs at 2 sites in southern Malawi: (i) Queen Elizabeth Central Hospital (QECH), a tertiary referral government hospital in Blantyre covering an urban and peri-urban population of 1.3 million with a high HIV prevalence (17.8% among adults) [21] and low malaria transmission; (ii) Chikwawa District Hospital, covering a rural district with high year-round transmission of *Plasmodium falciparum* [22] and a 13.4% HIV prevalence [21]. Antiretroviral treatment (ART) coverage among known HIV-infected adults and pregnant women in Malawi was around 80% [23]. Sentinel severe acute respiratory illness (SARI) surveillance was undertaken in Blantyre [24] but not in Chikwawa during the study period. There is no national influenza vaccination program.

Study Participants

Pregnant women aged ≥ 18 years presenting for delivery were enrolled in the labor ward at the 2 hospitals (see [Supplementary Figure 1](#) for eligibility criteria). Recruitment in Chikwawa was conducted as part of a randomized controlled trial (ISTp) that compared the effectiveness of scheduled intermittent screening with rapid diagnostic tests (RDT) and treatment with dihydroartemisinin-pyrimethamine and intermittent preventative therapy with sulfadoxine-pyrimethamine to prevent malaria during pregnancy in HIV-negative mothers (ISRCTN Registry ISRCTN69800930) [25]. HIV-infected mothers were excluded from the trial.

Study Procedures

Sample Collection and Processing

Maternal venous blood was collected within 12 hours of delivery. Cord blood was collected at delivery. Sera (Blantyre) and

heparinized plasma (Chikwawa) were separated and stored at -80°C until analysis.

HIV status was assessed using sequential rapid tests (Alere Determine HIV-1/2 and Trinity Biotech Uni-Gold HIV) [26]. RDT for malaria (Paracheck Pf, Orchid Biomedical Systems, Goa, India) was performed as per the manufacturer's instructions.

HAI assay was undertaken at the National Institute for Communicable Diseases (NICD) in Johannesburg, South Africa. Patient sera and plasma were treated with receptor-destroying enzyme (Denka Seiken RDE II), then heat-inactivated and diluted. Serial dilutions of sera and plasma were incubated with equal volumes of reference antigens A/California/7/2009 (A(H1N1)pdm09), A/Victoria/361/2011 (A(H3N2)), B/Brisbane/60/2008 (B/Victoria-lineage), and B/Wisconsin/1/2010 (B/Yamagata-lineage; vaccine strains for Southern and Northern Hemispheres during study period; 2012 VIDRL-WHO influenza virus typing kit: www.influenzacentre.org) at 4 hemagglutinating units each. After 1-hour incubation, an equal volume of 0.5% turkey red blood cells was added and left to settle for 45 minutes. Plates were visually inspected to determine HAI titers. Control reagents were included to monitor for nonspecific agglutination. HAI titer was expressed as the reciprocal of the highest serum dilution where hemagglutination was inhibited. HAI titers in sera and plasma were compared in a random subset of Blantyre mother-infant pairs.

After delivery, a standard questionnaire was administered to mothers to collect demographic data, pregnancy and childbirth history, and socioeconomic indicators (including maternal education, asset ownership, access to sanitation and water facilities, and housing materials). Newborn infants were weighed on digital scales; infants weighing < 2500 grams were classified as low birth weight. Due to poor recall of last menstrual period at the time of delivery and limited access to prenatal ultrasound, the gestational age of the newborn was assessed using the modified Ballard score [27]. Those with a gestational age < 37 weeks were classified as preterm. A socioeconomic index, divided into tertiles, was generated using principal components analysis [28].

Placental biopsies were collected and fixed in 10% neutral buffered formalin, then processed and embedded in paraffin wax. Four-micron-thin sections were stained with hematoxylin and eosin. The slides were read for presence of parasitized erythrocytes and hemozoin pigment and categorized as "active infection" if parasitized erythrocytes were present, "chronic infection" if both parasitized erythrocytes and pigmented macrophages were present, "past infection" if only pigment was present in fibrin, and "no infection" if no parasites or pigment was present [29]. Active and chronic infection was classified as "placental malaria-positive," whereas past and no infection was classified as "placental malaria-negative."

Statistical Analysis

Analysis was stratified by site due to distinct recruitment periods at the 2 sites (Supplementary Figure 2), recruitment of HIV-infected mothers from Blantyre only, and HAI measurement from different blood components (serum in Blantyre and plasma in Chikwawa). Thus, the impact of maternal HIV infection on maternal–fetal influenza antibody transfer was studied within Blantyre mother–infant pairs, whereas the effect of placental malaria was evaluated among Chikwawa mother–infant pairs.

A previous study in Malawi found a 21% and 18% reduction in placental transfer of IgG antibodies to *Streptococcus pneumoniae* by maternal HIV infection and placental malaria, respectively [14]. Assuming that transplacental transfer of influenza antibodies would be attenuated by a similar magnitude as that observed in pneumococcal antibodies, a sample size of 225 mother–infant pairs per site would provide 80% power to detect a $\geq 20\%$ difference in the proportion of newborns with an HAI titer $\geq 1:40$ to the 4 circulating influenza strains.

Statistical analyses were performed using Stata, version 14.1 (StataCorp LLC, College Station, TX). Baseline characteristics of enrolled mothers and newborns were compared using the χ^2 test for categorical data and the Wilcoxon rank-sum test for continuous data. Maternal and cord HAI titers against the influenza A(H1N1)pdm09, A(H3N2), B/Victoria, and B/Yamagata viruses were logarithmically transformed to calculate geometric mean titers (GMTs) and 95% confidence intervals (CIs). HAI titers $< 1:10$ were assigned a value of 1:5, and those with titers $> 1:1280$ were assigned a titer of 1:2560. The primary end point was the proportion of infants with HAI titers of $\geq 1:40$ (considered seropositive), which is associated with a $\geq 50\%$ reduction in symptomatic influenza in young healthy adults [30, 31].

Logistic regression was used to estimate the association of maternal HIV infection and placental malaria with infant influenza seropositivity, as well as the role of possible confounding covariates, including maternal age, parity, gestational age (< 37 or ≥ 37 weeks), infant birth weight (< 2500 or ≥ 2500 grams), socioeconomic status, and season of recruitment. Multivariable models were built using stepwise backward elimination of covariates with P values $> .20$. Significant variables were included in the multivariable models for all 4 strains. Maternal HAI titers were considered to be on the causal pathway in the analyses of infant HAI seropositivity; hence they were excluded from the regression models. A 2-sided P value of $< .05$ was considered significant.

Linear regression models were used to investigate the impact of HIV and placental malaria infection on the association between log maternal and cord titers, adjusted for any identified risk factors for infant seropositivity. The slope of the linear regression line (b_1) represents the ratio between log cord and maternal HAI titers (cord-maternal ratio), providing an estimate of the efficiency of transplacental maternal antibody transfer.

Ethics Statement

The study was approved by the University of Malawi College of Medicine Research Ethics Committee, Blantyre, Malawi. The US Centers for Disease Control and Prevention (CDC) reviewed the protocol and relied on the University of Malawi Ethics Committee (CDC IRB#6507). Written informed consent was obtained from all participating women.

RESULTS

Recruitment took place between January and August 2013 in Chikwawa and between September 2013 and February 2014 in Blantyre (Supplementary Figure 2). Overall, 454 mother–newborn pairs (Blantyre, $n = 253$; Chikwawa, $n = 201$) were included in the analysis (Table 1; Supplementary Figure 3). The median maternal age (interquartile range [IQR]) was 22 (19–28) years. Forty percent of women were primigravid. Thirty-seven of 253 (14.6%) Blantyre mothers were HIV positive. Placental malaria was identified in 10 of 214 (4.7%) Blantyre women and 63 of 201 (31.3%) Chikwawa women. Only 1 enrolled mother in Blantyre had HIV and placental malaria co-infection. Three of 243 (1.2%) Blantyre mothers and 38 of 200 (19.1%) Chikwawa mothers had a positive malaria RDT. None of the mothers had received influenza vaccination.

Among the newborns, 224 (49.4%) were males. The median gestational age of the babies (range) was 39 (30–42) weeks. Thirty-five of 448 (7.8%) newborns with an available Ballard score were preterm. Low birth weight was observed in 36 (7.9%) infants, of whom 17 (48.6%) were preterm.

Influenza Antibody Titers in Mothers and Infants, by Maternal HIV and Placental Malaria Status

The proportion of mothers and newborns with HAI titers $\geq 1:40$ against the circulating influenza strains and the corresponding GMT by maternal HIV and placental malaria status are shown in Supplementary Tables 1 and 2. Among Blantyre mother–infant pairs, both HIV-infected mothers and their newborns had a lower proportion of seropositivity for influenza A(H1N1)pdm09 and A(H3N2), compared with HIV-uninfected mother–infant pairs (influenza A(H1N1)pdm09: mothers, 24.3% vs 45.4%; $P = .02$; infants, 24.3% vs 50.5%; $P = .003$; influenza A(H3N2): mothers, 37.8% vs 63.9%; $P = .003$; infants, 43.2% vs 64.8%; $P = .01$) (Supplementary Table 1). HIV-infected mothers and their infants also had significantly lower GMTs for HAI antibodies for both influenza A strains (GM ratio for influenza A(H1N1)2009, 0.59; 95% CI, 0.35–0.99; A(H3N2), 0.45, 95% CI, 0.29–0.71). Percent seropositivity among mother–infant pairs was lower for B/Victoria (8.3%–13.5%) and B/Yamagata (11.1%–19.9%), with no difference by HIV status.

Among Chikwawa mother–infant pairs, seropositivity to the 4 different influenza strains varied from 66.7% to 100% among mothers and 66.7% to 98.6% among infants (Supplementary Table 2). Placental malaria was associated with lower maternal

Table 1. Demographic and Clinical Characteristics of Enrolled Mothers and Infants

Characteristic	All, No. (%)	Blantyre, No. (%)	Chikhwawa, No. (%)
	n = 454	n = 253	n = 201
Maternal			
Demographics			
Age, median (IQR), y	22 (19–28)	25 (19–31)	20 (17–23)
Area of residence	n = 448	n = 249	n = 199
Urban	142 (31.7)	141 (56.6)	0 (0)
Peri-urban	67 (15.0)	67 (26.9)	0 (0)
Rural	239 (53.3)	41 (16.5)	199 (100)
SES index score (tertiles)	n = 429	n = 229	n = 200
Low	150 (35.0)	17 (7.4)	133 (66.5)
Medium	137 (31.9)	73 (31.9)	64 (32.0)
High	142 (33.1)	139 (60.7)	3 (1.5)
Highest level of schooling	n = 452	n = 252	n = 202
None	33 (7.3)	6 (2.4)	27 (13.5)
Primary	269 (59.5)	119 (47.2)	150 (75.0)
Secondary	131 (29.0)	108 (42.9)	23 (11.5)
Tertiary	19 (4.2)	19 (7.5)	0 (0)
Primigravidae	183 (40.3)	84 (33.2)	99 (49.3)
Laboratory findings			
HIV-infected	37 (8.2)	37 (14.6)	0 (0) ^a
Placental malaria	73/415 (17.6)	10/214 (4.7)	63 (31.3)
Positive malaria RDT	41/442 (9.3)	3/243 (1.2)	38/200 (19.1)
Newborn			
Male sex	222/440 (49.4)	123/250 (49.2)	99/200 (49.8)
Gestational age ^b	n = 453	n = 251	n = 197
≥37 wk	413 (92.2)	224 (89.2)	189 (95.9)
<37 wk	35 (7.8)	27 (10.6)	8 (4.1)
Birth weight, median (IQR), g	3000 (2740–3200)	3000 (2800–3240)	3000 (2700–3200)
Low birth weight	36/452 (8.0)	23/257 (9.0)	13/200 (6.5)
Head circumference, mean ± SD, cm	33.3 ± 2.1	33.0 ± 2.6	33.7 ± 1.3

Abbreviations: IQR, interquartile range; RDT, rapid diagnostic test; SES socioeconomic status.

^aHIV-positive women were excluded in the Chikhwawa study.

^bBased on Ballard score.

seropositivity (78.7 vs 91.1%; $P = .02$) and GMT (121.7 vs 239.2; GM ratio, 0.51; 95% CI, 0.32–0.80) for influenza A(H1N1)pdm09, but this difference was not observed in the infants. Placental malaria status had no impact on maternal and infant seropositivity for the other influenza strains, though mothers with placental malaria and their newborns had lower GMT for B/Victoria compared with those without placental malaria (GMT in mothers, 418.7 vs 663.9; GM ratio, 0.63; 95% CI, 0.37–1.06; GMT in infants, 96.0 vs 150.2; GM ratio, 0.64; 95% CI, 0.41–1.01).

In the 34 Blantyre mother–infant pairs that had HAI assay performed on both sera and plasma, HAI GMT from plasma were generally higher than the corresponding serum values for all 4 viruses tested, but the difference by blood component was significant for B/Victoria (GMT, 46.6 vs 9.3; GM ratio, 5.01; 95% CI, 2.73–9.18) and B/Yamagata (GMT, 233.3 vs 15.2; GM ratio, 15.36; 95% CI, 8.43–27.98) (Supplementary Table 3).

Factors Associated With Infant Seropositivity

Among Blantyre mother–infant pairs, maternal HIV was associated with a significantly lower proportion of infants with an HAI titer $\geq 1:40$ for influenza A(H1N1)pdm09 (24.3% vs 50.5%; adjusted odds ratio [aOR], 0.34; 95% CI, 0.15–0.79) and A(H3N2) (43.2% vs 64.8%; OR, 0.43; 95% CI, 0.21–0.89) (Table 2). There was no association between maternal HIV and infant seropositivity for the influenza B strains. Younger maternal age (<25 years) was associated with infant seropositivity for influenza A(H1N1)pdm09 (aOR, 2.61; 95% CI, 1.54–4.45) and influenza B/Yamagata (aOR, 1.83; 95% CI, 0.97–3.79). Additionally, January to April recruitment was associated with infant seropositivity for influenza A(H1N1)pdm09 (aOR, 2.3; 95% CI, 1.34–4.20) and influenza B/Victoria (aOR, 2.40; 95% CI, 1.13–5.10).

Placental malaria had no association with infant seropositivity for any of the influenza strains in Chikhwawa (Table 3). Younger maternal age was associated with infant seropositivity against influenza A(H3N2) (71.3 vs 51.4%; aOR, 2.50; 95% CI,

Table 2. Association of Maternal HIV Status and Other Factors With Infant HAI Titers $\geq 1:40$ in Blantyre

	HAI Titer $\geq 1:40$, No. (%)	Univariable ^a		Multivariable ^b	
		OR (95% CI)	P Value	aOR (95% CI)	P Value
A(H1N1)pdm09					
Maternal age, y					
18–24	71/121 (58.7)	2.57 (1.55–4.27)	<.001	2.61 (1.54–4.45)	<.001
≥ 25	47/132 (35.6)	1		1	
Maternal HIV status					
Negative	109/216 (50.5)	1		1	
Positive	9/37 (24.3)	0.32 (0.14–0.70)	.005	0.34 (0.15–0.79)	.01
Season of recruitment					
Sep–Dec	70/171 (40.9)	1		1	
Jan–Apr	48/81 (59.3)	2.10 (1.23–3.59)	.007	2.38 (1.35–4.20)	.003
A(H3N2)					
Maternal age, y					
18–24	80/121 (66.1)	1.44 (0.86–2.40)	.16	1.36 (0.81–2.30)	.25
≥ 25	76/132 (57.6)	1		1	
Maternal HIV status					
Negative	140/216 (64.8)	1		1	
Positive	16/37 (43.2)	0.41 (0.20–0.84)	.02	0.43 (0.21–0.89)	.02
Season of recruitment					
Sep–Dec	104/171 (60.8)	1		1	
Jan–Apr	52/81 (64.2)	1.16 (0.67–2.00)	.61	1.18 (0.67–2.06)	.56
B/Victoria					
Maternal age, y					
18–24	16/121 (13.2)	1.10 (0.53–2.32)	.79	1.17 (0.55–2.50)	.68
≥ 25	15/132 (12.1)	1		1	
Maternal HIV status					
Negative	27/216 (12.5)	1		1	
Positive	5/37 (13.5)	1.09 (0.39–3.05)	.86	1.12 (0.39–3.18)	.84
Season of recruitment					
Sep–Dec	16/171 (9.4)	1		1	
Jan–Apr	16/81 (19.8)	2.38 (1.13–5.05)	.02	2.40 (1.13–5.10)	.02
B/Yamagata					
Maternal age, y					
18–24	30/121 (24.8)	1.85 (0.98–3.47)		1.84 (0.97–3.49)	.06
≥ 25	20/132 (15.2)	1		1	
Maternal HIV status					
Negative	43/216 (19.9)	1		1	
Positive	7/37 (18.9)	0.94 (0.39–2.28)	.89	1.08 (0.44–2.69)	.86
Season of recruitment					
Sep–Dec	30/171 (17.5)	1		1	
Jan–Apr	19/81 (23.5)	1.44 (0.75–2.75)	.27	1.49 (0.77–2.86)	.23

Abbreviations: aOR, adjusted odds ratio; CI, confidence interval; HAI, hemagglutination inhibition.

^aPotential confounders assessed: Maternal: age, socioeconomic status index, parity. Infant: sex, gestational age, birth weight. Other: season of recruitment.

^bMultivariable logistic regression: Maternal age, maternal HIV status, and season of recruitment.

1.18–5.27). Conversely, older maternal age was associated with infant seropositivity for influenza B/Victoria (82.2 vs 94.7%; aOR, 4.29; 95% CI, 0.96–19.16). Recruitment between May and August was associated with increased odds of infant seropositivity for influenza B/Victoria.

Transplacental Transfer of Maternal Influenza Antibodies

Figures 1 and 2 illustrate the relationship between maternal and cord blood HAI titers by maternal HIV and placental malaria

status, respectively. Among Blantyre mother–infant pairs, a strong positive linear relationship between maternal and cord HAI titers was observed for influenza A(H1N1)pdm09 (HIV-uninfected mothers: $b_1 = .825$; $R^2 = .695$; HIV-infected mothers: $b_1 = .810$; $R^2 = .670$) and A(H3N2) (HIV-uninfected mothers: $b_1 = .841$; $R^2 = .719$; HIV-infected mothers: $b_1 = .834$; $R^2 = .672$), suggesting efficient transplacental transfer (Figure 1; Supplementary Table 4). In contrast, poor linear association between maternal and infant titers was observed for B/Victoria

Table 3. Association of Placental Malaria and Other Factors With Infant HAI Titers $\geq 1:40$ in Chikwawa

	HAI Titer $\geq 1:40$, No. (%)	Univariable ^a		Multivariable ^b	
		OR (95% CI)	P Value	aOR (95% CI)	P Value
A(H1N1)pdm09					
Maternal age, y					
18–24	135/158 (85.4)	0.50 (0.14–1.77)	.29	0.53 (0.15–1.92)	.34
≥ 25	35/38 (92.1)	1		1	
Placental malaria					
Negative	119/135 (88.2)	1		1	
Positive	51/61 (83.6)	0.69 (0.29–1.61)	.39	0.73 (0.31–1.75)	.48
Season of recruitment					
Jan–Apr	126/145 (86.9)	1.05 (0.42–2.68)	.91	1.06 (0.41–2.72)	.90
May–Aug	44 (86.3)	1		1	
A(H3N2)					
Maternal age, y					
18–24	114/160 (71.3)	2.35 (1.13–4.87)	.02	2.50 (1.18–5.27)	.02
≥ 25	19/37 (51.4)	1		1	
Placental malaria					
Negative	91/134 (67.9)	1		1	
Positive	42/63 (66.7)	0.95 (0.50–1.78)	.86	0.80 (0.41–1.55)	.51
Season of recruitment					
Jan–Apr	101/147 (68.7)	1.24 (0.63–2.42)	.61	1.32 (0.66–2.64)	.43
May–Aug	32/50 (64.0)	1		1	
B/Victoria					
Maternal age, y					
18–24	134/163 (82.2)	1		1	
≥ 25	36/38 (94.7)	3.90 (0.89–17.10)	.07	4.29 (0.96–19.16)	.06
Placental malaria					
Negative	118/138 (85.5)	1		1	
Positive	52/63 (82.5)	0.80 (0.36–1.79)	.59	1.01 (0.44–2.33)	.98
Season of recruitment					
Jan–Apr	121/150 (80.7)	1		1	
May–Aug	49/51 (96.1)	5.87 (1.35–25.56)	.02	6.27 (1.43–27.48)	.02
B/Yamagata					
Maternal age, y					
18–24	161/163 (98.8)	2.18 (0.19–24.6)	.53	2.39 (0.19–29.40)	.50
≥ 25	37/38 (97.4)	1		1	
Placental malaria					
Negative	136/138 (98.6)	1		1	
Positive	62/63 (98.4)	0.93 (0.08–10.40)	.95	0.74 (0.06–9.16)	.81
Season of recruitment					
Jan–Apr	148/150 (98.7)	1.38 (0.13–16.67)	.75	1.61 (0.14–18.89)	.70
May–Aug	50/51 (98.0)	1		1	

Abbreviations: aOR, adjusted odds ratio; CI, confidence interval; HAI, hemagglutination inhibition.

^aPotential confounders assessed: Maternal: age, socioeconomic status index, parity. Infant: sex, gestational age, birth weight. Other: season of recruitment.

^bMultivariable logistic regression. Maternal age, placental malaria, and season of recruitment were included in all multivariable models.

and B/Yamagata. The slopes of the regression lines between HIV-infected and HIV-uninfected mother–infant pairs were not significantly different for all 4 strains, suggesting that maternal HIV had no impact on transplacental transfer (Supplementary Table 4).

Among Chikwawa mother–infant pairs, some linear association between maternal and cord HAI titers against influenza A(H1N1)pdm09 was observed (placental malaria-positive mothers, $R^2 = .456$; placental malaria-negative mothers, $R^2 = .609$) and against A(H3N2) (placental malaria-positive

mothers, $R^2 = .867$; placental malaria-negative mothers, $R^2 = .691$), but not for B/Victoria and B/Yamagata (Figure 2). The slope of the regression line differed by placental malaria status for influenza A(H1N1)pdm09 (placental malaria-positive vs placental malaria-negative: $b_1 = .604$ vs $.796$; $P = .05$) and A(H3N2) (placental malaria-positive vs placental malaria-negative: $b_1 = .970$ vs $.823$; $P = .06$) (Supplementary Table 4). There was no difference in the slopes of the regression lines for B/Victoria and B/Yamagata by placental malaria status.

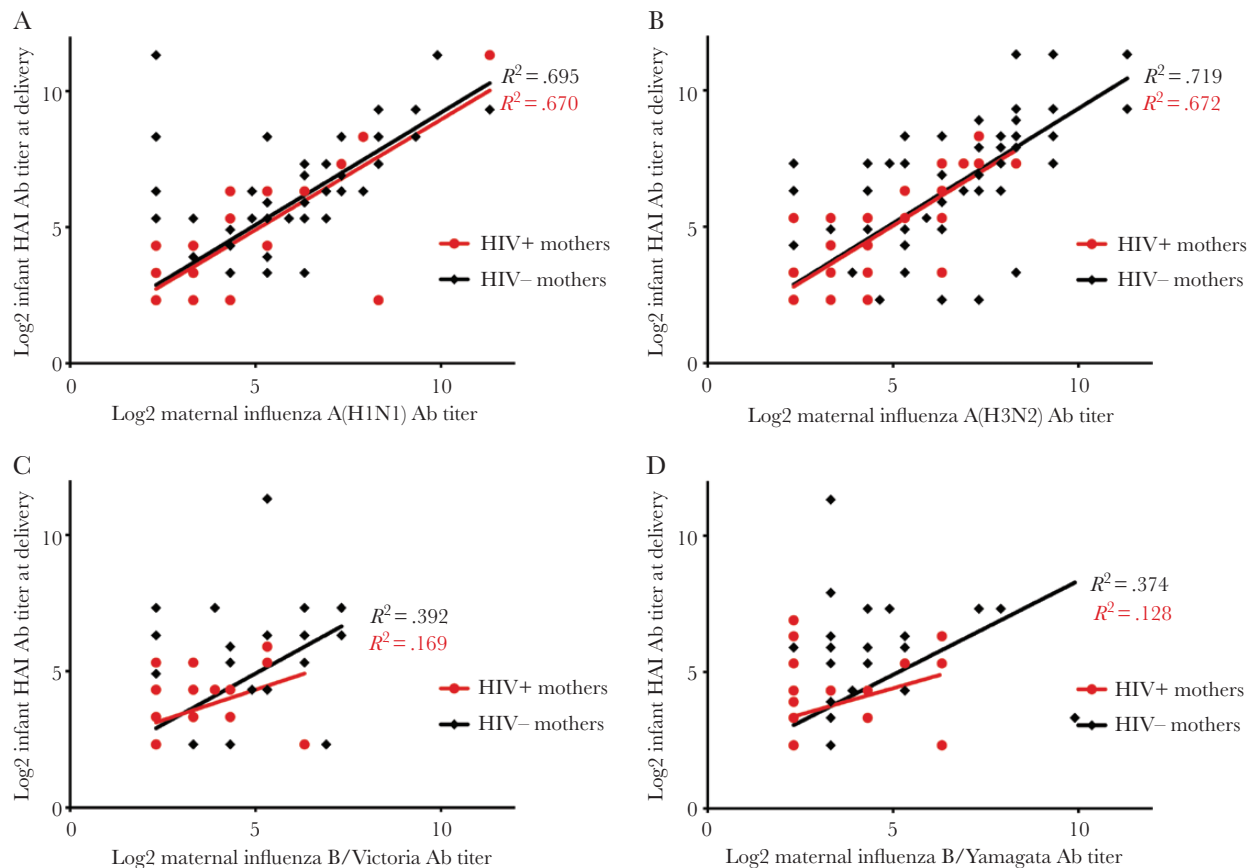


Figure 1. Relationship between maternal and newborn HAI titers among Blantyre mother–infant pairs by maternal HIV status. Abbreviations: Ab, antibody; HAI, hemagglutination inhibition.

DISCUSSION

HIV-infected mothers and their newborns had lower percent seropositivity and HAI titers to influenza A, but not B viruses, compared with HIV-negative mother–infant pairs. Maternal HIV infection did not affect transplacental antibody transfer. In contrast, placental malaria had no consistent impact on maternal and newborn influenza antibody levels or transplacental transfer. Season of recruitment and young maternal age were also independently associated with infant seropositivity.

There are 2 possible explanations for the lower antibody responses observed in HIV-infected mothers: (i) HIV-infected mothers generate weaker humoral responses to influenza virus infection than mothers without HIV, and (ii) HIV-infected pregnant women avoid crowded areas to mitigate infection exposure and therefore have a lower probability of influenza infection. Existing evidence supports the former; an influenza vaccine trial in pregnant women found lower antibody responses to all 3 vaccine strains in HIV-infected mothers, compared with HIV-uninfected women [20]. Interestingly, lower HAI titers did not translate to poorer clinical efficacy [9]. Infants of HIV-infected mothers also had lower titers, but insufficient power precluded evaluation of vaccine efficacy [20]. Second, studies have

reported a greater burden of symptomatic influenza in adults [17] and pregnant women [18] with HIV infection than those without HIV. Therefore, it seems unlikely that HIV-infected mothers in our study would have experienced fewer influenza infections than HIV-uninfected women. Furthermore, a study exploring the community perceptions of influenza in Malawi did not identify avoidance of crowded places as a known strategy to prevent the spread of influenza [32]. We found no difference in influenza B/Victoria and B/Yamagata seropositivity by maternal HIV status, which we speculate may be due to the comparatively low prevalence of influenza B seropositivity among Blantyre mother–infant pairs.

Malaria infection during pregnancy can affect antibody receptors on the placental surface [33]. Several studies have reported reduced transfer of antibodies against measles [14, 33] and tetanus [13, 16] in the presence of placental malaria, whereas others have not [15]. To our knowledge, the effect of placental malaria on the transplacental transfer of influenza antibodies has not been evaluated. We found no association between placental malaria and infant influenza seropositivity. Additionally, placental malaria had no consistent impact on transplacental transfer of influenza antibodies; it was associated

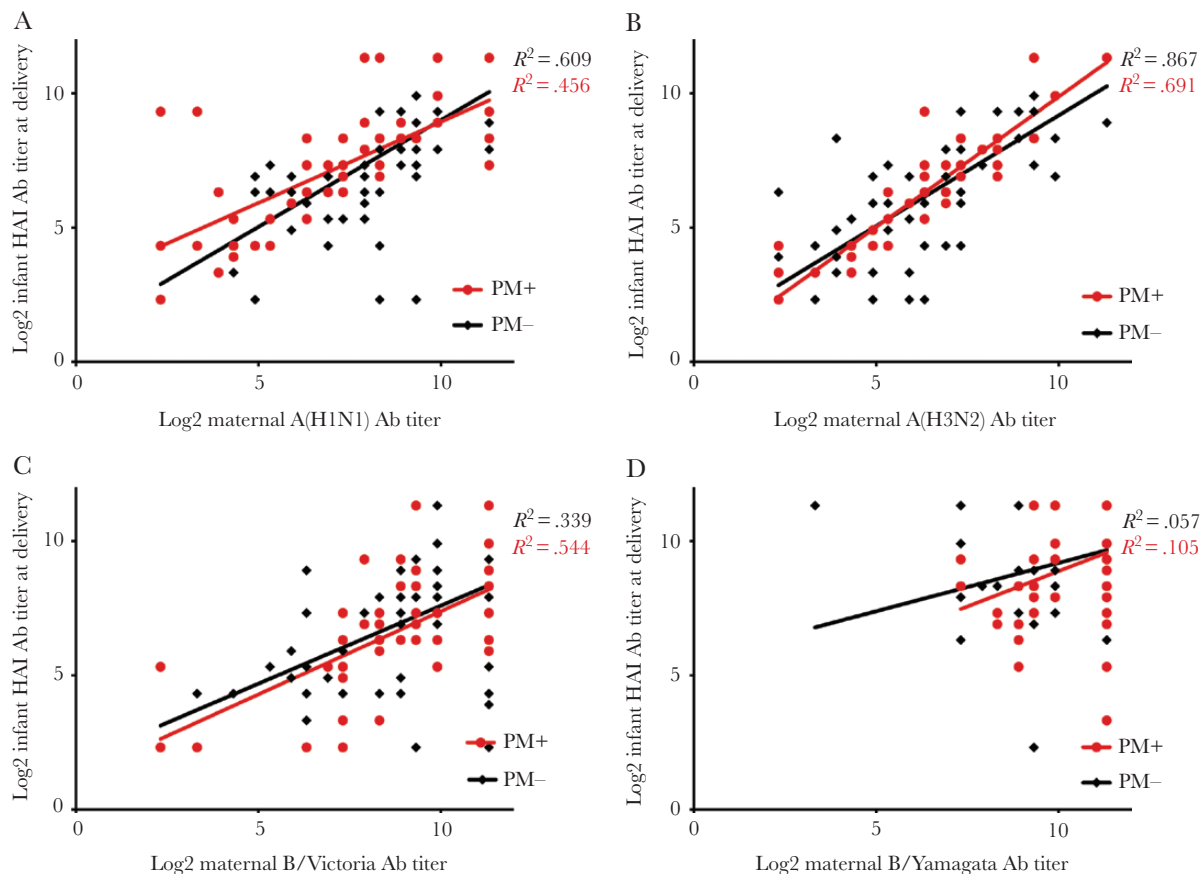


Figure 2. Relationship between maternal and newborn HAI titers among Chikwawa mother–infant pairs by placental malaria status. Abbreviations: Ab, antibody; HAI, hemagglutination inhibition; PM, placental malaria.

with less efficient transfer of influenza A(H1N1)pdm09 antibodies, but more efficient antibody transfer to A(H3N2). Scott et al. found reduced transplacental transfer of measles antibodies only in mothers with active chronic placental malaria infection [15]. We classified acute and chronic placental malaria as “positive” and those with past placental malaria infection as “negative.” A sensitivity analysis demonstrated no difference in transplacental transfer when placental malaria status was stratified as acute, chronic, past, or no infection, except for those with acute infection for influenza A/California/7/2009 (Supplementary Figure 4). The observed difference in the slope of the regression line is not significant as there was no linear relationship between log maternal and infant titer ($R^2 = .033$).

Infants with mothers aged <25 years had an approximately 2-fold increased odds of seropositivity against influenza A(H1N1)pdm09 and B/Yamagata in Blantyre, as well as A(H3N2) in Chikwawa, compared with infants of older mothers. Young age was also a predictor of antibody response in several influenza vaccine studies in HIV-infected and HIV-uninfected adults [20, 34]. In HIV-uninfected young individuals, this may be due to better thymic function [20]. In HIV-infected adults, poorer antibody response with increasing

age may be associated with longer duration of HIV infection or, with the former national HIV treatment guidelines that recommended commencement of ART at a lower CD4+ threshold, a longer duration of HIV-mediated immune dysregulation before ART initiation.

Influenza seropositivity was high among mothers and their newborns to the influenza A viruses in Blantyre and to all 4 circulating influenza viruses in Chikwawa. In the context of no influenza vaccination coupled with evidence of influenza virus circulation, it is reasonable to assume that detected antibodies reflect exposure to natural influenza infection. Seropositivity and GMTs varied substantially between Blantyre and Chikwawa mother–infant pairs, particularly for influenza B viruses. Although information on circulating influenza strains was only available in Blantyre, we postulate that this variability is partly due to exposure to different circulating strains from distinct recruitment periods. Moreover, the different blood components on which HAI assays were performed is likely a contributory factor. Analysis of paired plasma and sera in our subset of Blantyre samples demonstrated significantly higher HAI titers from plasma compared with sera for the influenza B viruses, which has been previously reported [35].

Our study had several limitations. First, because pregnant women were recruited at the time of delivery, we were unable to determine the maternal history of influenza infection and could not definitively conclude whether low maternal antibody levels were due to poor response to natural infection or absence of exposure. Second, CD4+ cell count and ART status of HIV-infected mothers were not captured. Thus we were unable to assess the effect of varying degrees of immunosuppression on antibody responses in HIV-infected mothers and infants. Third, analysis was stratified by site as a result of the differences in recruitment time periods, blood components used for HAI titer, and eligibility criteria (HIV-infected women excluded in Chikwawa), thus precluding evaluation of the effect of maternal HIV and placental malaria co-infection and their potential interaction on transplacental influenza antibody transfer, as only 1 mother from Blantyre had dual infection. Misclassification of prematurity is possible, as the modified Ballard score is prone to inter-rater variability [36] and tends to overestimate gestational age [37]. Lastly, we chose a cord HAI titer of $\geq 1:40$ as a correlate for protection [30, 31]. Some have argued that higher HAI titers (eg, 1:110) may be required to provide protection against influenza in children due to an immature cellular immune system and a lack of immunological memory [38]. Furthermore, a recent study suggested that microneutralization (MN) titers may be better predictors of protection compared with HAI [39].

In summary, infants of HIV-infected mothers were more likely to be seronegative and have lower antibody titers to influenza A viruses, which we postulate is due to an attenuated maternal antibody response to natural influenza infection rather than reduced efficiency of placental transfer. In contrast, placental malaria had no consistent impact with infant influenza seropositivity or transplacental transfer. These findings suggest that influenza vaccines targeting pregnant women may have variable efficacy in sub-Saharan Africa, where up to 35% of women of childbearing age may be HIV infected [40]. Adjuvanted preparations or higher doses to boost maternal antibodies may be required to optimize protection for HIV-infected pregnant women and their infants, which will impact the cost-effectiveness of maternal influenza immunization interventions. Further studies are needed to define the best correlate of protection against influenza disease in HIV-infected persons and clarify whether the attenuated antibody response observed in infants of HIV-infected women results in reduced clinical protection, if it is compounded by dual maternal HIV and placental malaria infection, and whether ART improves influenza antibody responses in HIV-infected mothers and infants.

Supplementary Data

Supplementary materials are available at *Open Forum Infectious Diseases* online. Consisting of data provided by the authors to benefit the reader, the posted materials are not copyedited and are the sole responsibility of the authors, so questions or comments should be addressed to the corresponding author.

Acknowledgments

We would like to thank the study participants and the study teams at the Queen Elizabeth Central Hospital and Chikwawa District Hospital for their valued contribution.

Author contributions. G.M., M.M., L.K.P., F.T.K., D.E., M.A., M.Mc., and R.S.H. conceived of and designed the study; G.M. and M.M. oversaw patient recruitment and acquired and evaluated clinical data with support from B.M., V.M., A.H., and R.S.H.; A.B. and F.T. performed the HAI assay; S.K. oversaw the preparation and interpretation of placental biopsies; A.H. devised and completed the data analysis; A.H. drafted the initial manuscript. All authors read and approved the final version of the manuscript.

Financial support. This study was supported by the Centers for Disease Control and Prevention (Cooperative Agreement 5U01IP000848) and the Malawi Liverpool Wellcome Trust Programme Core Award (101113/Z/13/Z).

Disclaimer. The findings and conclusions in this report are those of the authors and do not necessarily represent the official position of the Centers for Disease Control and Prevention.

Potential conflicts of interest. All authors: no reported conflicts of interest. All authors have submitted the ICMJE Form for Disclosure of Potential Conflicts of Interest. Conflicts that the editors consider relevant to the content of the manuscript have been disclosed.

Prior presentation. Presented in part at the 6th meeting of the African Network of Influenza Surveillance and Epidemiology; March 19–21, 2018.

References

- Rasmussen SA, Jamieson DJ, Uyeki TM. Effects of influenza on pregnant women and infants. *Am J Obstet Gynecol* **2012**; 207:S3–8.
- Louie JK, Acosta M, Jamieson DJ, Honein MA; California Pandemic (H1N1) Working Group. Severe 2009 H1N1 influenza in pregnant and postpartum women in California. *N Engl J Med* **2010**; 362:27–35.
- Siston AM, Rasmussen SA, Honein MA, et al. Pandemic 2009 influenza A(H1N1) virus illness among pregnant women in the United States. *JAMA* **2010**; 303:1517–25.
- Goldstein E, Lipsitch M. H1N1 vaccination and adults with underlying health conditions in the US. *PLoS Currents* **2009**; 1:RRN1132.
- Fell DB, Savitz DA, Kramer MS, et al. Maternal influenza and birth outcomes: systematic review of comparative studies. *BJOG* **2017**; 124:48–59.
- World Health Organization. Vaccines against influenza WHO position paper - November 2012. *Wkly Epidemiol Rec* **2012**; 87:461–76.
- Ortiz JR, Perut M, Dumolard L, et al. A global review of national influenza immunization policies: analysis of the 2014 WHO/UNICEF Joint Reporting Form on immunization. *Vaccine* **2016**; 34:5400–5.
- Zaman K, Roy E, Arifeen SE, et al. Effectiveness of maternal influenza immunization in mothers and infants. *N Engl J Med* **2008**; 359:1555–64.
- Madhi SA, Cutland CL, Kuwanda L, et al. Influenza vaccination of pregnant women and protection of their infants. *N Engl J Med* **2014**; 371:918–31.
- Reuman PD, Ayoub EM, Small PA. Effect of passive maternal antibody on influenza illness in children: a prospective study of influenza A in mother–infant pairs. *Pediatr Infect Dis J* **1987**; 6:398–403.
- Poehling KA, Edwards KM, Weinberg GA, et al. The underrecognized burden of influenza in young children. *N Engl J Med* **2006**; 355:31–40.
- Gruber WC, Darden PM, Still JG, et al. Evaluation of bivalent live attenuated influenza A vaccines in children 2 months to 3 years of age: safety, immunogenicity and dose-response. *Vaccine* **1997**; 15:1379–84.
- Brair ME, Brabin BJ, Milligan P, et al. Reduced transfer of tetanus antibodies with placental malaria. *Lancet* **1994**; 343:208–9.
- de Moraes-Pinto MI, Verhoeff F, Chimsuku L, et al. Placental antibody transfer: influence of maternal HIV infection and placental malaria. *Arch Dis Child Fetal Neonatal Ed* **1998**; 79:F202–5.
- Scott S, Cumberland P, Shulman CE, et al. Neonatal measles immunity in rural Kenya: the influence of HIV and placental malaria infections on placental transfer of antibodies and levels of antibody in maternal and cord serum samples. *J Infect Dis* **2005**; 191:1854–60.
- Cumberland P, Shulman CE, Maple PA, et al. Maternal HIV infection and placental malaria reduce transplacental antibody transfer and tetanus antibody levels in newborns in Kenya. *J Infect Dis* **2007**; 196:550–7.
- Ho A, Aston SJ, Jary H, et al. Impact of HIV on the burden and severity of influenza illness in Malawian adults: a prospective cohort and parallel case-control study. *Clin Infect Dis* **2018**; 66:865–76.

18. Tempia S, Walaza S, Moyes J, et al. Risk factors for influenza-associated severe acute respiratory illness hospitalization in South Africa, 2012–2015. *Open Forum Infect Dis* **2017**; 4:1–10.
19. Cohen AL, McMorrow M, Walaza S, et al. Potential impact of co-infections and co-morbidities prevalent in Africa on influenza severity and frequency: a systematic review. *PLoS One* **2015**; 10:e0128580.
20. Nunes MC, Cutland CL, Dighero B, et al. Kinetics of hemagglutination-inhibiting antibodies following maternal influenza vaccination among mothers with and those without HIV infection and their infants. *J Infect Dis* **2015**; 212:1976–87.
21. Joint United Nations Programme on HIV/AIDS (UNAIDS). *Malawi Developing Subnational Estimates of HIV Prevalence and the Number of People Living With HIV*. Geneva: UNAIDS; **2014**.
22. Dzinjalimala F. *Epidemiology of Malaria in Malawi*. Blantyre, Malawi: Epidemiology of Malawi University of Malawi College of Medicine; **2009**.
23. National AIDS Commission Malawi. *Malawi National Strategic Plan for HIV and AIDS 2015–2020*. Lilongwe, Malawi: National AIDS Commission, Malawi; **2014**.
24. Ho A, Mallewa J, Peterson I, et al. Epidemiology of severe acute respiratory illness and risk factors for influenza infection and clinical severity among adults in Malawi, 2011–2013. *Am J Trop Med Hyg* **2018**; 99:772–9.
25. Madanitsa M, Kalilani L, Mwapasa V, et al. Scheduled intermittent screening with rapid diagnostic tests and treatment with dihydroartemisinin-piperaquine versus intermittent preventive therapy with sulfadoxine-pyrimethamine for malaria in pregnancy in Malawi: an open-label randomized controlled trial. *PLoS Med* **2016**; 13:e1002124.
26. World Health Organization. *Rapid HIV Tests: Guidelines for Use in HIV Testing and Counselling Services in Resource-constrained Settings*. Geneva: World Health Organization; **2004**.
27. Ballard JL, Khoury JC, Wedig K, et al. New Ballard score, expanded to include extremely premature infants. *J Pediatr* **1991**; 119:417–23.
28. Vyas S, Kumaranayake L. Constructing socio-economic status indices: how to use principal components analysis. *Health Policy Plan* **2006**; 21:459–68.
29. Ismail MR, Ordi J, Menendez C, et al. Placental pathology in malaria: a histological, immunohistochemical, and quantitative study. *Hum Pathol* **2000**; 31:85–93.
30. Hobson D, Curry RL, Beare AS, et al. The role of serum haemagglutination-inhibiting antibody in protection against challenge infection with influenza A2 and B viruses. *J Hyg (Lond)* **1972**; 70:767–77.
31. Coudeville L, Bailleux F, Riche B, et al. Relationship between haemagglutination-inhibiting antibody titres and clinical protection against influenza: development and application of a Bayesian random-effects model. *BMC Med Res Methodol* **2010**; 10:18.
32. Fleming JA, Munthali A, Ngwira B, et al. Maternal immunization in Malawi: a mixed methods study of community perceptions, programmatic considerations, and recommendations for future planning. *Vaccine* **2019**; 37:4568–75.
33. Okoko BJ, Wesuperuma LH, Ota MO, et al. Influence of placental malaria infection and maternal hypergammaglobulinaemia on materno-foetal transfer of measles and tetanus antibodies in a rural west African population. *J Health Popul Nutr* **2001**; 19:59–65.
34. Crum-Cianflone NF, Eberly LE, Duplessis C, et al. Immunogenicity of a monovalent 2009 influenza A (H1N1) vaccine in an immunocompromised population: a prospective study comparing HIV-infected adults with HIV-uninfected adults. *Clin Infect Dis* **2011**; 52:138–46.
35. Morrison BJ, Martin NJ, Rehman T, et al. Influence of sample collection tube method, anticoagulant-containing plasma versus serum, on influenza virus hemagglutination inhibition titer and microneutralization titer serological assays. *BMC Health Serv Res* **2018**; 18:651.
36. Lee AC, Mullany LC, Ladhani K, et al. Validity of newborn clinical assessment to determine gestational age in Bangladesh. *Pediatrics* **2016**; 138.
37. Lee AC, Panchal P, Folger L, et al. Diagnostic accuracy of neonatal assessment for gestational age determination: a systematic review. *Pediatrics*. **2017**; 140:e20171423.
38. Black S, Nicolay U, Vesikari T, et al. Hemagglutination inhibition antibody titers as a correlate of protection for inactivated influenza vaccines in children. *Pediatr Infect Dis J* **2011**; 30:1081–5.
39. Nunes MC, Weinberg A, Cutland CL, et al. Neutralization and hemagglutination-inhibition antibodies following influenza vaccination of HIV-infected and HIV-uninfected pregnant women. *PLoS One* **2018**; 13:e0210124.
40. World Health Organization. Global Health Observatory (GHO) data: HIV/AIDS prevalence in sub-Saharan Africa. Available at: http://www.who.int/gho/urban_health/outcomes/hiv_prevalence/en/. Accessed 28 September 2018.