



PUBLISHED FOR SISSA BY SPRINGER

RECEIVED: July 21, 2018
REVISED: September 27, 2018
ACCEPTED: October 1, 2018
PUBLISHED: October 10, 2018

Low-temperature enhancement of semi-annihilation and the AMS-02 positron anomaly

Yi Cai^a and Andrew Spray^b

^a*School of Physics, Sun Yat-sen University, Guangzhou, 510275, China*

^b*Center for Theoretical Physics of the Universe, Institute for Basic Science (IBS), Daejeon, 34126, South Korea*

E-mail: caiyi.pku@gmail.com, a.spray.work@gmail.com

ABSTRACT: Semi-annihilation is a generic feature of particle dark matter that is most easily probed by cosmic ray experiments. We explore models where the semi-annihilation cross section is enhanced at late times and low temperatures by the presence of an s -channel resonance near threshold. The relic density is then sensitive to the evolution of the dark matter temperature, and we compute expressions for the associated Boltzmann equation valid in general semi-annihilating models. At late times, a *self-heating* effect warms the dark matter, allowing number-changing processes to remain effective long after kinetic decoupling of the dark and visible sectors. This allows the semi-annihilation signal today to be enhanced by up to five orders of magnitude over the thermal relic cross section. As a case study, we apply this to a dark matter explanation of the positron excess seen by AMS-02. We see that unlike annihilating dark matter, our model has no difficulty fitting the data while also giving the correct relic density. However, constraints from the CMB and γ -rays from the galactic centre do restrict the preferred regions of parameter space.

KEYWORDS: Beyond Standard Model, Global Symmetries

ARXIV EPRINT: [1807.00832](https://arxiv.org/abs/1807.00832)

Contents

1	Introduction	1
2	Semi-annihilation and dark partners	4
2.1	General form: long-lived dark partners	5
2.2	Asymptotic solution	5
2.3	Approximations for prompt decays	6
3	Temperature evolution of semi-annihilating dark matter	7
3.1	Review	8
3.2	Semi-annihilation and kinetic decoupling	9
3.3	Asymptotic dark matter temperature	12
4	Late-time resonantly enhanced semi-annihilation	13
5	UV-complete simplified model	15
6	Fitting the AMS-02 positron excess	18
7	Thermal relic density and late-time cross section enhancement	21
8	Conclusions	27
A	Boltzmann equations with kinetic decoupling	28
B	Lepton-number model	32

1 Introduction

The dark matter problem remains perhaps the most compelling single piece of evidence for the existence of new particles. Thermal freeze-out further provides a simple mechanism to explain the observed relic density with only one or a few states, and can be easily motivated on particle physics grounds. However, substantial experimental progress in recent years has covered much of the parameter space of traditional frameworks such as supersymmetry. In such an environment, it is important to check that the assumptions in conventional approaches are not too severe; and any generic weakening of the present bounds would motivate closer study.

One such exception is given by semi-annihilation [1] (SA), non-decay processes with an odd number of external dark states. Models of particle dark matter (DM) almost always require a symmetry, either exact or (for decaying DM) very weakly broken, under

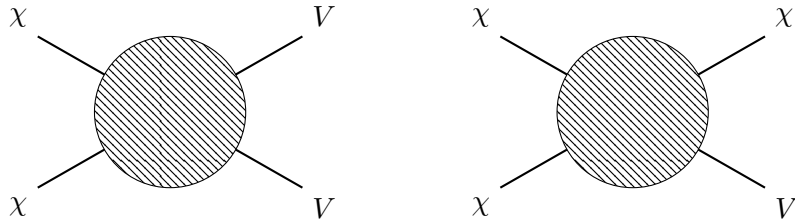


Figure 1. Two types of dark sector-visible sector interactions, where χ (V) is any dark (visible) field. (Left): DM annihilation to/from, or scattering off, the SM; this is the only possibility when the DM is stabilised by a \mathbb{Z}_2 symmetry. (Right): semi-annihilation, a non-decay process with an odd number of external dark fields, generically possible when the stabilising symmetry is not a \mathbb{Z}_2 . We show $2 \rightarrow 2$ processes for illustrative purposes (and because they typically dominate), but any number of final states are possible.

which the dark sector is charged and the Standard Model (SM) is neutral. In the most commonly-studied scenarios, that global symmetry is a single \mathbb{Z}_2 . The immediate implication is that all processes must have an even number of external dark sector particles, and the dominant number-changing processes are $2 \rightarrow 2$ (co)-annihilation, see the left side of figure 1. Crossing symmetry then relates the relic density to signal rates at colliders or direct detection experiments, and it is the combination of all these searches that makes bounds so severe. However, *any other* global symmetry may allow SA, illustrated in the right side of figure 1, which can be important for the determination of the thermal relic density while irrelevant at colliders and direct detection experiments. We show $2 \rightarrow 2$ SA in figure 1 since this usually has the highest rate. This is not the only possibility, and in particular $2 \rightarrow n$ processes with final states consisting of one DM and $n - 1$ visible sector particles are also common. Semi-annihilating dark matter (SADM) is then both generic *and* less constrained than conventional models.

Though constraints are weakened in SADM, they are not absent. The diagram in the left of figure 1 can not be forbidden by any symmetry, so will always be present; and SA itself can lead to indirect signals in cosmic ray experiments [2]. It is therefore important to explore the model space and discover to what extent current constraints do apply. Ref. [3] made an initial step in this direction by systematically constructing effective field theories describing all possible $2 \rightarrow 2$ SA with SM final states. However, that approach implicitly assumed that the low-energy interactions between the dark and visible sectors are non-perturbative with simple velocity dependence. Exceptions to this behaviour are well-known, and include the Sommerfeld effect [4, 5], bound state formation [6–9], and the presence of an s -channel resonance near threshold [10]. All of these have been studied in the context of DM both for how they affect the relic density, and also for the possibility that they can lead to enhanced cross sections today. As indirect detection is the most robust search channel for SADM, it is worth considering the interplay of these two aspects of phenomenology. For previous work in this direction see [11, 12].

In ref. [13] it was emphasised that when annihilation is enhanced at low temperature, the final relic density depends sensitively on the DM temperature T_χ . It is usually assumed

that the DM remains in kinetic equilibrium, $T_\chi = T_{\text{SM}} \equiv T$, till all number changing processes cease to be important. While a safe assumption in conventional scenarios where freeze-out occurs at relatively high temperatures, $m_\chi/T_\chi \sim 25$, enhanced cross sections can continue to be relevant till much later, $m_\chi/T_\chi \gtrsim 10^3$. This is especially important in the case of an s -channel resonance; the DM-SM scattering process related by crossing symmetry will be much smaller, leading to earlier kinetic decoupling of the dark and visible sectors.

The temperature evolution of DM has attracted recent attention in a number of contexts [13–21]. The temperature of SADM specifically was previously studied in refs. [22, 23]; however, those works focused on a specific type of single-component SA, and provided expressions valid only for Maxwellian phase space distributions. We extend their work to SADM phenomenology of the type discussed in ref. [3], provide expressions valid for arbitrary phase space distributions, and derive new approximations useful in the Maxwellian non-relativistic case. Doing so illustrates the generality of the earlier result that post-kinetic decoupling, SADM redshifts as *radiation*, $T_\chi \propto T$, and not matter, $T_\chi \propto T^2$. This is despite the DM remaining strongly non-relativistic, and is instead due to a *self-heating* effect where SA converts mass energy to dark sector kinetic energy. For sufficiently large SA cross sections, the DM can even be *hotter* than the visible sector prior to matter-radiation equality. The implications are obvious: if kinetic decoupling occurs before freeze-out of low-temperature enhanced cross sections, since SADM is *warmer* than conventional DM it will have *smaller* number changing rates. The observed relic density can be obtained for larger DM-SM couplings, leading to larger potential signals today.

To illustrate this effect, we consider a concrete example: a SADM model for the positron excess seen by PAMELA [24] and AMS-02 [25–27]. These experiments measure the cosmic ray positron flux for $10 \text{ GeV} \lesssim E \lesssim 1 \text{ TeV}$ to be orders of magnitude larger than the expected secondary backgrounds [28, 29]. While astrophysical explanations exist, most notably millisecond Pulsars [30–32], this observation has also proved fertile ground for DM model building, e.g. [33–38] and references therein (see ref. [12] for an earlier model involving SADM).¹ These models require (semi)-annihilation cross sections approximately three orders of magnitude larger than the thermal relic cross section. However, it was shown in ref. [40] that the *theoretical* maximum enhancement possible with a Breit-Wigner resonance is only $\lesssim 10^2$. This limit arises precisely because the temperature drop after kinetic decoupling leads to a suppression in the relic density, bounding the annihilation cross sections from above. The higher post-decoupling temperature of SADM is then a natural avenue to circumvent this obstacle.

The outline of this paper is as follows. We first review some details on semi-annihilation, and in particular the concept of dark partners, in section 2. In section 3 we review how the dark matter temperature T_χ is defined and evolves, expand on previous results for SADM, and derive its asymptotic behaviour. In section 4, we discuss cross sections enhanced by an s -channel resonance, how they depend on the dark matter temperature evolution, and the role that SA can play. We then perform the positron excess case study, first constructing

¹See also ref. [39] for a model of SADM that attempts to fit the AMS-02 anti-proton and anti-Helium data.

an explicit model in section 5, then fitting the putative signal in section 6, and finally demonstrating that our model can simultaneously fit the signal cross section and thermal relic density in section 7. We end with our conclusions in section 8. Some additional aspects are deferred to the appendices; appendix A contains more technical details on the Boltzmann equations and thermally averaged cross sections, and appendix B outlines a lepton-number motivation for our simplified model.

2 Semi-annihilation and dark partners

We assume the existence of an unbroken global symmetry group $\mathcal{D} \neq \mathbb{Z}_2$, under which all SM fields are neutral. We refer to the states (un)charged under \mathcal{D} as the dark (visible) sector, which include at least the dark matter χ (SM). Conservation of \mathcal{D} means that SA has at least three external dark sector particles, with the minimal possibility being $\chi\chi \rightarrow \chi^\dagger + SM$. The DM must be neutral under the unbroken SM gauge group; the same must then hold for the set of SM particles in the final state. For $2 \rightarrow 2$ processes, the only possible SM final states are then the photon, Z , Higgs and neutrinos. However, as discussed in ref. [3], only the Higgs is possible in renormalisable minimal models, with the other states demanding multi-component dark sectors.

If we want to allow other SM final states, we must expand our interest to at least $2 \rightarrow 3$ processes. In general, these processes will be phase-space suppressed, making it harder for them to be relevant for thermal freeze out. However, we can circumvent that suppression by introducing additional unstable states, such that the SA is a $2 \rightarrow 2$ process followed by one or more decays. One commonly studied option uses additional *visible sector* states ϕ ; the relevant channel is then $\chi\chi \rightarrow \chi^\dagger\phi$, followed by ϕ decay to the SM. For examples, see refs. [1, 12, 22, 23, 41].

In this work, we will follow an alternative option introduced in ref. [3], where we add further *dark sector* particles Ψ , charged under both \mathcal{D} and the SM gauge group. Such states are common in DM models stabilised by a \mathbb{Z}_2 symmetry, e.g. superpartners in supersymmetry or top partners in composite Higgs models that include dark matter. These particles must be cosmologically unstable to avoid constraints on charged and coloured relics. In these models, SA is $\chi\chi \rightarrow \Psi^\dagger V$, where V is an SM state, followed by Ψ decay. In order for SA to be relevant during freeze-out, $m_\Psi < 2m_\chi$. The only possible decay channel for Ψ is $\Psi \rightarrow \chi + SM$, which requires $m_\Psi > m_\chi$ and that \mathcal{D} is (equivalent to) \mathbb{Z}_3 . Finally, in order for SA to be a $2 \rightarrow 2$ process, Ψ must have the same SM quantum numbers as V , for which reason we call these states *dark partners*.

One important complication in models which contain dark partners is that the Boltzmann equation for the dark matter contains an explicit dependence on the number density of Ψ . Both the SA term itself as well as the Ψ decay term depend on n_Ψ and are relevant to dark matter freeze-out. This means that in general it is necessary to integrate the coupled equations for both $Y_{\chi,\Psi} = n_{\chi,\Psi}/s$, with s the entropy density, when determining the relic abundance of χ . We discuss these expressions more fully in section 3.2 and appendix A. Here we outline the general evolution of Y_Ψ , its asymptotic behaviour and approximate solution after Ψ annihilations freeze out, and a useful simplification when Ψ decays promptly.

2.1 General form: long-lived dark partners

We first consider the full general expression for the Boltzmann equations for SADM with dark partners.² These expressions strictly apply to all such models, but from a practical point are most relevant when the dark partners decay after DM freeze-out is completed. The Boltzmann equation for the dark partner is

$$\begin{aligned} \frac{dY_\Psi}{dx} = & -\frac{\Gamma_\Psi}{xHZ} \left(Y_\Psi - Y_\chi \frac{Y_\Psi^{\text{eq}}}{Y_\chi^{\text{eq}}} \right) + \frac{1}{2} \frac{s}{xHZ} \langle \sigma v(\chi\chi \rightarrow \Psi^\dagger V) \rangle \left(Y_\chi^2 - Y_\Psi \frac{(Y_\chi^{\text{eq}})^2}{Y_\Psi^{\text{eq}}} \right) \\ & - \frac{s}{xHZ} \langle \sigma v(\Psi^\dagger \Psi \rightarrow SM) \rangle (Y_\Psi^2 - (Y_\Psi^{\text{eq}})^2) + \dots, \end{aligned} \quad (2.1)$$

and for the dark matter

$$\begin{aligned} \frac{dY_\chi}{dx} = & \frac{\Gamma_\Psi}{xHZ} \left(Y_\Psi - Y_\chi \frac{Y_\Psi^{\text{eq}}}{Y_\chi^{\text{eq}}} \right) - \frac{s}{xHZ} \langle \sigma v(\chi\chi \rightarrow \Psi^\dagger V) \rangle \left(Y_\chi^2 - Y_\Psi \frac{(Y_\chi^{\text{eq}})^2}{Y_\Psi^{\text{eq}}} \right) \\ & - \frac{s}{xHZ} \langle \sigma v(\chi^\dagger \chi \rightarrow SM) \rangle (Y_\chi^2 - (Y_\chi^{\text{eq}})^2) + \dots \end{aligned} \quad (2.2)$$

The factor of one-half in the SA term in eq. (2.1) is a symmetry factor associated with identical particles. It does not appear in the equivalent term in eq. (2.2) as this term changes χ number by 2. We have introduced the usual inverse temperature $x = m_\chi/T$ and

$$Z = \left(1 - \frac{x}{3g_{*S}} \frac{dg_{*S}}{dx} \right)^{-1}, \quad (2.3)$$

where g_{*S} is the effective number of relativistic degrees of freedom, such that the entropy density $s = 2\pi^2 g_{*S} T^3/45$. The dots in eqs. (2.1) and (2.2) denote contributions from co-annihilation $\Psi\chi^\dagger \rightarrow SM$ and semi-co-annihilation $\Psi\chi \rightarrow \chi^\dagger V$; these are qualitatively similar to annihilation, in that the reverse channels are exponentially Maxwell-suppressed at low temperatures. These three processes all enforce $Y_{\chi,\Psi} = Y_{\chi,\Psi}^{\text{eq}}$ at early times but freeze out in the usual manner; they are also typically subdominant to the processes we explicitly included.

2.2 Asymptotic solution

The asymptotic solution for the dark matter number density is $Y_\chi \rightarrow$ a constant. This is true for both annihilating and SADM models. The physical reason is straightforward: as the Universe expands, the rate for processes initiated by two (or more) particles is suppressed due to the dilution of matter. The total number, and hence Y_χ , become approximately constant. It can also be easily seen from eq. (2.2): all $2 \rightarrow n$ processes involve a factor of $s/xHZ \sim T^2$. They become negligible at sufficiently late times, so that dY_χ/dx vanishes.

In contrast, (inverse) decay processes become *more* relevant at late times. Decays are unsuppressed by expansion, and the Hubble time increases while the lifetime remains the same. We can also examine the temperature dependence of the decay terms in eqs. (2.1)

²We assume that χ -SM and Ψ -SM scattering remain efficient, and relax the former assumption later.

and (2.2): $1/xHZ \sim 1/T$ grows with time. (Inverse) decays will dominate expansion for $x > x^{\text{dec}}$ where

$$x^{\text{dec}} H(x^{\text{dec}}) = \Gamma_{\Psi}, \quad x^{\text{dec}} \sim \frac{10^{-15}}{\Gamma_{\Psi}/m_{\Psi}} \left(\frac{m_{\chi}}{1 \text{ TeV}} \right). \quad (2.4)$$

For annihilating dark matter models, the asymptotic number density for unstable states decaying to dark matter is then given by setting the decay term in eq. (2.1) to zero: $Y_{\Psi} \approx Y_{\chi} (Y_{\Psi}^{\text{eq}}/Y_{\chi}^{\text{eq}})$.

The presence of SA modifies this result. DM annihilation to heavier states vanishes at threshold, so the thermally averaged cross sections are exponentially suppressed. In contrast, SA production of a dark partner can have non-vanishing s -wave piece and in general must be included. After χ freeze out, we can approximate eq. (2.1) by neglecting all terms proportional to at least one power of Y_i^{eq} . We can also usually neglect terms quadratic in $Y_{\Psi} \ll 1$; in particular, the decay term will also dominate over the annihilation term provided that

$$\frac{\Gamma_{\Psi}}{m_{\Psi}} > \langle \sigma v(\bar{\Psi}\Psi \rightarrow SM) \rangle \frac{n_{\Psi}}{m_{\Psi}} \sim 10^{-17} \left(\frac{\langle \sigma v(\bar{\Psi}\Psi \rightarrow SM) \rangle}{3 \times 10^{-26} \text{ cm}^3 \text{ s}^{-1}} \right) \left(\frac{n_{\Psi}}{n_{\Psi}^{\text{eq}}(T = m_{\Psi}/25)} \right), \quad (2.5)$$

which is typically a weaker condition than eq. (2.4). We then have the approximate Boltzmann equation

$$\frac{dY_{\Psi}}{dx} \approx -\frac{\Gamma_{\Psi}}{xHZ} \left(Y_{\Psi} - Y_{\chi} \frac{Y_{\Psi}^{\text{eq}}}{Y_{\chi}^{\text{eq}}} \right) + \frac{1}{2} \frac{s}{xHZ} \langle \sigma v(\chi\chi \rightarrow \Psi^{\dagger}V) \rangle Y_{\chi}^2. \quad (2.6)$$

We estimate the solution by setting the left-hand side to zero:

$$Y_{\Psi} \approx Y_{\chi} \frac{Y_{\Psi}^{\text{eq}}}{Y_{\chi}^{\text{eq}}} + \frac{s \langle \sigma v(\chi\chi \rightarrow \Psi^{\dagger}V) \rangle}{2\Gamma_{\Psi}} Y_{\chi}^2, \quad (2.7)$$

which is a slowly-varying function consistent with our approximation. When the first term dominates, the dark partner number density is set by inverse decay; it is larger than the equilibrium density and proportional to Y_{χ} . However, at sufficiently low temperatures the SA term will always come to dominate. The true asymptotic solution for Y_{Ψ} is

$$\lim_{x \rightarrow \infty} Y_{\Psi} \approx \frac{s \langle \sigma v(\chi\chi \rightarrow \Psi^{\dagger}V) \rangle_{T=0}}{2\Gamma_{\Psi}} Y_{\chi}^2. \quad (2.8)$$

Physically, since SA production of Ψ is unique in not being Maxwell-suppressed and Y_{χ} asymptotes to a constant, it is the only relevant production method of dark partners at late times. The number density of Ψ is then set by balancing this process with the decay rate.

2.3 Approximations for prompt decays

The dark partner number density initially (at high temperatures) takes its equilibrium value, and at late times is given by eq. (2.7). In the general case, the intermediate values require solving the coupled equations of eqs. (2.1) and (2.2). However, in a large fraction of model space the dark partner decay is sufficiently rapid to simplify our problem. A typical

tree-level decay rate is $\Gamma_\Psi/m_\Psi \sim y^{2(n-1)}/(4\pi)^{2n-3}$, with y a decay coupling and n the number of final state particles. It follows from eq. (2.4) that generically $x^{\text{dec}} \lesssim 1$, unless y is small, n is large or there is additional phase space suppression. By definition, this means that (inverse) decays become important before dark partner annihilations freeze out. Prior to χ freeze out,³ $Y_\chi \approx Y_\chi^{\text{eq}}$ and the decay term drives Y_Ψ towards equilibrium; afterwards it enforces eq. (2.7). This gives us an approximate solution at all times.

If the decay width is sufficiently large, we can simplify this solution further. If the first term of eq. (2.7) dominates prior to χ freeze-out, it gives $Y_\Psi = Y_\Psi^{\text{eq}}$, allowing us to describe our solution with a single expression. This will break down at sufficiently early times, as s increases without bound; but holding for all non-relativistic temperatures is sufficient for most purposes. The condition for the first term to dominate is

$$\frac{\Gamma_\Psi}{m_\Psi} > 10^{-3} x^{-3/2} e^{-(2-m_\Psi/m_\chi)x} \left(\frac{m_\chi}{m_\Psi}\right)^{5/2} \left(\frac{\langle\sigma v(\chi\chi \rightarrow \Psi^\dagger V)\rangle}{3 \times 10^{-26} \text{ cm}^3 \text{ s}^{-1}}\right) \left(\frac{m_\chi}{1 \text{ TeV}}\right)^2. \quad (2.9)$$

Thanks to the exponential suppression, this will generally hold for any unsuppressed two-body decay for $x \gtrsim 1$.

We can use our approximate solution for Y_Ψ to simplify the calculation of the relic density. In particular, if the decay term of eq. (2.7) is dominant, then we can rewrite the contribution of SA and Ψ decay to the Y_χ Boltzmann equation as

$$\begin{aligned} \frac{dY_\chi}{dx} &= \frac{\Gamma_\Psi}{xHZ} \left(Y_\Psi - Y_\chi \frac{Y_\Psi^{\text{eq}}}{Y_\chi^{\text{eq}}}\right) - \frac{s}{xHZ} \langle\sigma v(\chi\chi \rightarrow \Psi^\dagger V)\rangle \left(Y_\chi^2 - Y_\Psi \frac{(Y_\chi^{\text{eq}})^2}{Y_\Psi^{\text{eq}}}\right) + \dots \\ &\approx -\frac{1}{2} \frac{s}{xHZ} \langle\sigma v(\chi\chi \rightarrow \Psi^\dagger V)\rangle Y_\chi (Y_\chi - Y_\chi^{\text{eq}}) + \dots \end{aligned} \quad (2.10)$$

In the second line, we used eq. (2.1) to eliminate the decay term, substituted the first term in eq. (2.7) for Y_Ψ , and neglected dY_Ψ/dx since $Y_\Psi \ll Y_\chi$. More generally, we could use both terms in eq. (2.7), but the relevance of eq. (2.10) is that it has the usual semi-annihilation form for theories *without* dark partners. Physically, if the dark partner decays promptly during χ freeze-out, we can approximate the combined SA plus decay process as a single SA event, $\chi\chi \rightarrow \chi^\dagger + SM$. The factor of one-half means that the cross section required for a thermal relic through SA alone is enhanced over the usual canonical value. There is an additional factor of 2 due to SADM always being complex, so the canonical thermal SA cross section is $\langle\sigma v\rangle_0 = 1.2 \times 10^{-25} \text{ cm}^3 \text{ s}^{-1}$.

3 Temperature evolution of semi-annihilating dark matter

The details of the temperature evolution of dark matter, and of kinetic decoupling from the SM, have recently been discussed in a number of contexts [13–23, 42]. How this behaviour changes in the presence of semi-annihilation was first explored in refs. [22, 23]; we expand on and provide alternative forms for their results. In this section, we first review the definition of the dark matter temperature, the consequences of it differing from the SM plasma

³We assume that since $m_\Psi > m_\chi$, dark partner annihilations freeze out first. If Ψ has SM gauge interactions, its annihilation cross section can be larger than for DM and this might not hold.

temperature, and its Boltzmann equation. We then give expressions that correspond to the contributions of SA and dark partner decay. In both cases we assume CP is conserved. Finally, we discuss the distinct asymptotic behaviour of the temperature in the presence of SA, first described in ref. [22], where the temperature redshifts like radiation due to a self-heating effect. We clarify how this behaviour is generic, and under what circumstances it can lead to dark matter which is asymptotically hotter or colder than the SM.

3.1 Review

We follow ref. [14] in defining the dark matter temperature T_χ and a dimensionless variable y_χ as

$$T_\chi = \frac{g_\chi}{3n_\chi} \int \frac{d^3 p_\chi}{(2\pi)^3} \frac{\vec{p}_\chi^2}{E_\chi} f_\chi(p_\chi), \quad y_\chi = \frac{m_\chi T_\chi}{s^{2/3}}, \quad (3.1)$$

where $f_\chi(p_\chi)$ is the dark matter phase space distribution, g_χ the number of internal degrees of freedom, and s the entropy density. The former expression is defined for any distribution function, but produces the expected result if the phase space function is Maxwellian, $f_\chi \propto e^{-E_\chi/T_\chi}$. The dimensionless parameter is so defined as, for normal dark matter, it is approximately constant after kinetic decoupling. As discussed below this is no longer true for SADM, but we retain the same definition to maintain consistency with and make use of the literature.

The first impact of allowing $T_\chi \neq T_{\text{SM}}$ is that the thermal averages in the number density Boltzmann equation are modified. Specifically, forward annihilation must be evaluated using the actual functions f_χ , while the inverse rates use the equilibrium distributions f_χ^{eq} :

$$\frac{dY_\chi}{dx} \supset -\frac{s}{xHZ} \left(Y_\chi^2 \langle \sigma v(\chi\chi^\dagger \rightarrow SM) \rangle_{\text{neq}} - (Y_\chi^{\text{eq}})^2 \langle \sigma v(\chi\chi^\dagger \rightarrow SM) \rangle_{\text{eq}} \right). \quad (3.2)$$

The thermally averaged cross sections are defined in the usual way, see eq. (A.10) in appendix A for more details. More importantly, we must include an additional Boltzmann equation for y_χ that describes the evolution of the DM temperature. The general form is [14]

$$\frac{1}{y_\chi} \frac{dy_\chi}{dx} = -\frac{1}{Y_\chi} \frac{dY_\chi}{dx} + \frac{1}{xZ} \frac{1}{3T} \left\langle \frac{p^4}{E^3} \right\rangle_{T_\chi} + \frac{m_\chi}{xHZ} \sum_i C_2^{(i)} \quad (3.3)$$

where the $C_2^{(i)}$ are moments of collision operators, and the sum includes all terms that contribute to the Y_χ Boltzmann equation plus scattering processes between DM and the SM. For annihilation-like terms, they are given by a simple extension of eq. (3.2),

$$C_2^{(\text{ann})} = -\frac{s}{m_\chi} \left(Y_\chi \langle \sigma v(\chi\chi^\dagger \rightarrow SM) \rangle_{2,\text{neq}} - \frac{(Y_\chi^{\text{eq}})^2}{Y_\chi} \langle \sigma v(\chi\chi^\dagger \rightarrow SM) \rangle_{2,\text{eq}} \right) \quad (3.4)$$

where the modified thermal averages are

$$\langle \sigma v(\chi\chi^\dagger \rightarrow SM) \rangle_{2,\text{neq}} = \frac{g_\chi^2}{3n_\chi^2 T_\chi} \int \frac{d^3 p_\chi}{(2\pi)^3} \frac{d^3 p_{\chi^\dagger}}{(2\pi)^3} \frac{\vec{p}_\chi^2}{E_\chi} f_\chi(p_\chi) f_\chi(p_{\chi^\dagger}) \sigma \frac{\sqrt{(p_\chi \cdot p_{\chi^\dagger})^2 - m_\chi^4}}{E_\chi E_{\chi^\dagger}}. \quad (3.5)$$

The equilibrium terms have the obvious replacement $f_\chi \rightarrow f_\chi^{\text{eq}}$. For pure s -wave cross sections, $\langle \sigma v \rangle_2 = \langle \sigma v \rangle$, but the two functions differ when higher partial waves are relevant. For the scattering terms, we have instead

$$C_2^{(\text{sca})} = \frac{\gamma(T)}{m_\chi} \left(\frac{y_{\text{eq}}}{y_\chi} - 1 \right) \quad (3.6)$$

where y_{eq} is y_χ when $T_\chi = T$ and the γ -function is [42]

$$\gamma(T) = \frac{g_{\text{SM}}}{3\pi^2 m_\chi^2 T} \int d\omega f_{\text{SM}}(\omega) (1 \pm f_{\text{SM}}(\omega)) k^4 \int d\Omega (1 - \cos\theta) \frac{d\sigma}{d\Omega}, \quad (3.7)$$

with the scattering cross section σ evaluated at centre of mass energy $E_{\text{cm}}^2 = m_\chi^2 + 2m_\chi \omega$.

3.2 Semi-annihilation and kinetic decoupling

In light of our discussion in section 2, SADM models can be divided into two classes: those with and without dark partners. The latter case was previously discussed in refs. [22, 23], but we expand on their discussion. The contribution of the forward process to both the number density and temperature Boltzmann equations have the same form as in eqs. (3.2) and (3.4), replacing the annihilation cross section with the SA one. The inverse process is more complicated; the temperature difference prevents us from being able to factor the collision operator integrals in terms of the forward cross section as usual. The best exact expression uses the inverse cross section directly, so that

$$\frac{dY_\chi}{dx} \supset -\frac{1}{2} \frac{s}{xHZ} Y_\chi \left(Y_\chi \langle \sigma v(\chi\chi \rightarrow \chi^\dagger + SM) \rangle_{\text{neq}} - Y_{\text{SM}}^{\text{eq}} \langle \sigma v(\chi^\dagger + SM \rightarrow \chi\chi) \rangle_{T_\chi, T} \right), \quad (3.8)$$

where the factor of one-half is the usual result of SA changing χ number by one instead of two, and the thermal average of the inverse process is

$$\begin{aligned} \langle \sigma v(\chi^\dagger + SM \rightarrow \chi\chi) \rangle_{T_\chi, T} &= \frac{g_\chi g_{\text{SM}}}{n_\chi n_{\text{SM}}^{\text{eq}}} \int \frac{d^3 p_{\chi^\dagger}}{(2\pi)^3} \frac{d^3 p_{\text{SM}}}{(2\pi)^3} f_\chi(p_{\chi^\dagger}) f_{\text{SM}}(p_{\text{SM}}) \\ &\times \sigma(\chi^\dagger + SM \rightarrow \chi\chi) \frac{\sqrt{(p_{\chi^\dagger} \cdot p_{\text{SM}})^2 - m_\chi^2 m_{\text{SM}}^2}}{E_{\chi^\dagger} E_{\text{SM}}}. \end{aligned} \quad (3.9)$$

We have written this assuming a single SM particle, but the generalisation to more is conceptually simple. Even in a $2 \rightarrow 2$ process, however, eq. (3.9) is awkward to compute, being a function of two inputs (T and T_χ) that requires at least a two-dimensional numerical integration. To this end, we note a useful simplification that occurs in the non-relativistic limit. First we rewrite the phase space functions as

$$f_\chi(p_{\chi^\dagger}) f_{\text{SM}}(p_{\text{SM}}) = \frac{n_\chi}{n_\chi^{\text{eq}}(T_\chi)} e^{-E_{\chi^\dagger}/T_\chi} e^{-E_{\text{SM}}/T} = \frac{n_\chi}{n_\chi^{\text{eq}}(T_\chi)} e^{-(E_{\chi_1} + E_{\chi_2})/T} e^{-E_{\chi^\dagger} \Delta_\chi / m_\chi}, \quad (3.10)$$

where we have defined the difference of inverse temperatures,

$$\Delta_\chi = \frac{m_\chi}{T_\chi} - \frac{m_\chi}{T}. \quad (3.11)$$

Next, we note that the typical momentum of the SA final state χ^\dagger is large compared to the χ thermal momentum $p_{\chi,th} \sim T$. For a $2 \rightarrow 2$ process and neglecting the SM mass, $|\vec{p}_{\chi^\dagger}| = 3m_\chi/4$; including visible sector masses or extra final state particles will result in lower momenta but still typically $\mathcal{O}(m_\chi)$. It follows that the boost from the cosmological frame to the collision centre of mass frame will be a correction of $\mathcal{O}(x^{-1})$. In many cases, including those studied in this paper, scattering is more important till $x \gtrsim 100$ so this is a negligible sub-percent effect. Then we may define a more easily-computable function

$$\mathcal{S}(T, T_\chi) = \frac{n_\chi^{\text{eq}}(T)}{n_\chi^{\text{eq}}(T_\chi)} \frac{1}{\sigma(\chi\chi \rightarrow \chi^\dagger SM)} \frac{1}{2E_{cm}^2(1 - 4m_\chi^2/E_{cm}^2)^{1/2}} \int d\Pi_n \sum |\mathcal{M}|^2 e^{-E_{\chi^\dagger} \Delta_\chi / m_\chi}, \quad (3.12)$$

with $d\Pi_n$ the n -body Lorentz-invariant phase space (including momentum-conserving delta function) and E_{cm} the total centre-of-mass frame energy, such that $\mathcal{S}(T, T) = 1$ and

$$\frac{dY_\chi}{dx} \supset -\frac{1}{2} \frac{s}{xHZ} Y_\chi \left(Y_\chi \langle \sigma v(\chi\chi \rightarrow \chi^\dagger + SM) \rangle_{\text{neq}} - Y_\chi^{\text{eq}} \langle \sigma v(\chi\chi \rightarrow \chi^\dagger + SM) \rangle_{\text{eq}} \mathcal{S}(T, T_\chi) \right). \quad (3.13)$$

Physically, \mathcal{S} is the mean value of the exponential over all energies the χ^\dagger has (multiplied by the ratio of equilibrium densities). It follows that the integral in eq. (3.12) is trivial for $2 \rightarrow 2$ processes, and more generally can be reduced to a one-dimensional integral as a function of one parameter, Δ_χ . In the non-relativistic limit, $n_\chi^{\text{eq}}(T)/n_\chi^{\text{eq}}(T_\chi) = (T/T_\chi)^{3/2} e^{\Delta_\chi}$, which reduces the exponential dependence of \mathcal{S} on Δ_χ . For the usual case $T_\chi \leq T$, $\mathcal{S} \leq 1$ is a suppression factor.

The contribution of this type of SA to the y_χ Boltzmann equation follows a similar pattern. We focus on the non-relativistic approximation for Maxwellian phase space distributions. We define an analogous function to eq. (3.12),

$$\mathcal{S}_\mathcal{T}(T, T_\chi) = \frac{n_\chi^{\text{eq}}(T)}{n_\chi^{\text{eq}}(T_\chi)} \frac{1}{\sigma} \frac{1}{\mathcal{U}_\chi^S} \frac{1}{2E_{cm}^2(1 - 4m_\chi^2/E_{cm}^2)^{1/2}} \int d\Pi_n \sum |\mathcal{M}|^2 \frac{\vec{p}_{\chi^\dagger}^2}{m_\chi E_{\chi^\dagger}} e^{-E_{\chi^\dagger} \Delta_\chi / m_\chi}, \quad (3.14)$$

where the normalisation constant \mathcal{U}_χ^S is chosen to ensure $\mathcal{S}_\mathcal{T}(T, T) = 1$, and is the expected value of $\gamma_{\chi^\dagger} v_{\chi^\dagger}$ in the collision centre of mass frame. Using these we can write

$$\begin{aligned} \frac{m_\chi}{s} C_2^{SA} &\approx -Y_\chi \langle \sigma v(\chi\chi \rightarrow \chi^\dagger \phi) \rangle_{2,\text{neq}} + Y_\chi^{\text{eq}} \mathcal{S}(T, T_\chi) \langle \sigma v(\chi\chi \rightarrow \chi^\dagger \phi) \rangle_{2,\text{eq}} \\ &\quad + \frac{1}{6} \mathcal{U}_\chi^S x_\chi \left(Y_\chi \langle \sigma v(\chi\chi \rightarrow \chi^\dagger \phi) \rangle_{\text{neq}} - Y_\chi^{\text{eq}} \mathcal{S}_\mathcal{T}(T, T_\chi) \langle \sigma v(\chi\chi \rightarrow \chi^\dagger \phi) \rangle_{\text{eq}} \right). \end{aligned} \quad (3.15)$$

We have introduced $x_\chi = m_\chi/T_\chi$. See appendix A for details, and more general expressions. Note that the terms in the second line involve the usual thermally averaged cross sections of eq. (A.10), not those of eq. (3.5).

When dark partners are included, we must consider the possibility that Ψ will also have a temperature that deviates from the SM. Since Ψ is normally charged under the unbroken SM gauge group, it will have unsuppressed scattering with the SM plasma that remain effective till after χ has decoupled. However, the unstable nature of Ψ implies

that the relevant question is not whether Ψ -SM scattering dominates over expansion, but whether the dark partners thermalise before decaying. This will be true if

$$n_{\text{sc}} \langle \sigma v \rangle_{\text{sc}} \frac{T}{m_{\Psi}} > \Gamma_{\Psi}, \quad \text{or} \quad g_{\text{sc}} x_{\Psi}^{-4} (m_{\Psi}^2 \langle \sigma v \rangle_{\text{sc}}) > \frac{\Gamma_{\Psi}}{m_{\Psi}}, \quad (3.16)$$

where n_{sc} is the number density of the species that Ψ scatters with, $g_{\text{sc}} = n_{\text{sc}}/T^3$, the factor of T/m represents the typical fractional momentum transfer in collisions, and $x_{\Psi} = m_{\Psi}/T$. We see that for this to be true out to even moderate values of $x_{\Psi} \sim 10^3$, we need a highly suppressed decay width, of order $\Gamma_{\Psi} < 10^{-15} m_{\Psi}$ for electroweak scattering. However, this will be precisely the case we consider later. When eq. (3.16) is true, then we can take $T_{\Psi} = T$, but we must still include Y_{Ψ} as a separate integration parameter; we give the relevant formulae below. Alternatively, if the decay rate is large and eq. (2.9) holds, we can treat the decay as always prompt and consider the SA followed by decay as a single process. We need only study the evolution of Y_{χ} and y_{χ} . For the former, we use the results below but with the approximation of eq. (2.7) to replace for Y_{Ψ} wherever it appears; for the latter, we use eq. (3.15) with

$$\mathcal{S}\mathcal{T}(T, T_{\chi}) = \frac{n_{\chi}^{\text{eq}}(T)}{n_{\chi}^{\text{eq}}(T_{\chi})} \int dE_{\chi} \frac{dN_{\chi}}{dE_{\chi}} \frac{\vec{p}_{\chi}^2}{m_{\chi} E_{\chi}} e^{-E_{\chi} \Delta_{\chi}/m_{\chi}}, \quad (3.17)$$

where dN/dE is the spectrum of DM produced in Ψ decay, including a boost corresponding to the dark partner's momentum when produced in SA. Finally, for intermediate widths, the dark matter temperature must be included as an additional parameter that varies with the cosmological evolution and has its own Boltzmann equation. We defer this case to future work.

The contribution of SA and decay to the Boltzmann equations for $Y_{\chi, \Psi}$ are then simple extensions of the appropriate terms in eqs. (2.1) and (2.10) to include the effects of T_{χ} . For SA, this is very easy since $T_{\Psi} = T$, and so

$$\frac{dY_{\chi}}{dx} \supset -\frac{s}{xHZ} \left(Y_{\chi}^2 \langle \sigma v(\chi\chi \rightarrow \Psi^{\dagger} + SM) \rangle_{\text{neq}} - Y_{\Psi} \frac{(Y_{\chi}^{\text{eq}})^2}{Y_{\Psi}^{\text{eq}}} \langle \sigma v(\chi\chi \rightarrow \Psi^{\dagger} + SM) \rangle_{\text{eq}} \right), \quad (3.18)$$

with the contribution to the Y_{Ψ} evolution equation being -2 times this. The complications due to DM kinetic decoupling appear in the contribution of the decay operator, which in the usual Maxwellian and non-relativistic limit is given by

$$\frac{dY_{\chi}}{dx} \supset \frac{\Gamma_{\Psi}}{xHZ} \left(Y_{\Psi} - Y_{\chi} \frac{Y_{\Psi}^{\text{eq}}}{Y_{\chi}^{\text{eq}}} \mathcal{D}(T, T_{\chi}) \right), \quad (3.19)$$

where \mathcal{D} is analogous to eq. (3.12) except for the decay operator, see appendix A and in particular eq. (A.17) for details. The contribution to dY_{Ψ}/dx is exactly equal and opposite. The SA effect on the evolution of T_{χ} is also a natural extension of eq. (3.4):

$$\frac{m_{\chi}}{s} C_2^{SA} = -Y_{\chi} \langle \sigma v(\chi\chi \rightarrow \Psi^{\dagger} + SM) \rangle_{2, \text{neq}} + \frac{Y_{\Psi}}{Y_{\chi}} \frac{(Y_{\chi}^{\text{eq}})^2}{Y_{\Psi}^{\text{eq}}} \langle \sigma v(\chi\chi \rightarrow \Psi^{\dagger} + SM) \rangle_{2, \text{eq}}. \quad (3.20)$$

Finally, the contribution of Ψ decay is given by

$$C_2^{\text{dec}} = \mathcal{U}_\chi^D \frac{\Gamma_\Psi}{3T_\chi} \left(\frac{Y_\Psi}{Y_\chi} - \frac{Y_\Psi^{\text{eq}}}{Y_\chi^{\text{eq}}} \mathcal{D}_\mathcal{T}(T, T_\chi) \right), \quad (3.21)$$

where \mathcal{U}_χ^D is the decay equivalent of \mathcal{U}_χ^S , the mean of $p_\chi^2/(E_\chi m_\chi)$ produced in Ψ decay; and $\mathcal{D}_\mathcal{T}$ is analogous to $\mathcal{S}_\mathcal{T}$, an integral over the decay matrix element including an exponential factor depending on Δ_χ . Precise definitions are given in eqs. (A.18) and (A.19) respectively in appendix A.

3.3 Asymptotic dark matter temperature

In ref. [22] it was observed that SA causes a *self-heating* effect that results in a different asymptotic temperature behaviour compared to ordinary cold DM. Specifically, once DM-SM scattering decouples, ordinary DM redshifts as matter with $T_\chi \sim p_\chi \sim a^{-2} \sim T^2$, where a is the expansion scale factor. This is the reason for defining y_χ as in eq. (3.1): after kinetic decoupling, $y_\chi \sim T_\chi/T^2$ is constant. In contrast, SA converts DM mass into kinetic energy, resulting in $T_\chi \sim a^{-1} \sim T$. Note, however, that although this is the redshift behaviour of radiation, the dark matter remains highly non-relativistic, $T_\chi \ll m_\chi$.

To understand the origin of this behaviour, let us first consider the general case. The interaction rate for $2 \rightarrow n$ SA is $n_\chi^2 \langle \sigma v(SA) \rangle_{\text{neq}}$, and each such event will convert an average fraction q_χ of the mass to kinetic energy. This fraction is process-dependent, but importantly a temperature-*independent* constant. The temperature is parametrically $T_\chi \sim E_\chi/N_\chi$, where N_χ is the total number of DM particles, and so

$$\frac{dT_\chi}{dt} \sim \frac{1}{N_\chi} \int dV q_\chi m_\chi n_\chi^2 \langle \sigma v(SA) \rangle_{\text{neq}} \sim q_\chi m_\chi n_\chi \langle \sigma v(SA) \rangle_{\text{neq}}.$$

Converting this to dimensionless form (and neglecting entropy production) gives

$$\frac{dy_\chi}{dx} = \frac{y_\chi}{T_\chi} \frac{1}{xHZ} \frac{dT_\chi}{dt} = \frac{s^{1/3}}{xHZ} q_\chi m_\chi^2 Y_\chi \langle \sigma v(SA) \rangle_{\text{neq}}. \quad (3.22)$$

The right hand side has no explicit dependence on T_χ , and indeed is asymptotically constant: the cross section at late times is given by the s -wave piece, Y_χ approaches the constant relic value, and during radiation-domination the combination $s^{1/3}/(xH)$ is also constant. Unless SA has no s -wave piece, at late times $y_\chi \propto x$ or, equivalently, $T_\chi \propto T$:

$$\lim_{x \rightarrow \infty} T_\chi \approx 18 q_\chi T \left(\frac{g_{*S}}{80} \right)^{1/2} \left(\frac{\Omega_\chi h^2}{0.12} \right) \left(\frac{\langle \sigma v(\chi\chi \rightarrow \chi^\dagger SM) \rangle_{T=0}}{3 \times 10^{-26} \text{ cm}^3 \text{ s}^{-1}} \right). \quad (3.23)$$

We will shortly see that in practice, q_χ is at most a few percent in $2 \rightarrow 2$ SA, so typically $T_\chi \approx T$, depending on the relative importance of SA versus annihilation in determining the relic density. When the low-temperature SA cross section is enhanced, we can expect the DM to be much hotter. For $2 \rightarrow n$ SA with $n \geq 3$, q_χ will be smaller resulting in lower temperatures, but the radiation-like redshift behaviour will remain.

The derivation of eq. (3.23) was based on general arguments, but it is also instructive to connect it to the results presented above. In the absence of dark partners and neglecting terms that are exponentially suppressed at late times, the contribution of SA is

$$\begin{aligned} \frac{dy_\chi}{dx} &\supset \frac{s}{xHZ} y_\chi Y_\chi \left[\frac{1}{2} \left(1 + \frac{1}{3} x_\chi \mathcal{U}_\chi^S \right) \langle \sigma v(\chi\chi \rightarrow \chi^\dagger SM) \rangle_{\text{neq}} - \langle \sigma v(\chi\chi \rightarrow \chi^\dagger SM) \rangle_{2,\text{neq}} \right] \\ &\approx \frac{1}{6} \frac{s^{1/3} m_\chi^2}{xHZ} Y_\chi \mathcal{U}_\chi^S \langle \sigma v(\chi\chi \rightarrow \chi^\dagger SM) \rangle_{\text{neq}}. \end{aligned} \quad (3.24)$$

In the second line, we focused on the most enhanced term at low temperatures. We see that eq. (3.24) has the same form as eq. (3.23), with $q_\chi \rightarrow \mathcal{U}_\chi^S/6$. For $2 \rightarrow 2$ SA with a massless visible final state, $\mathcal{U}_\chi^S = 9/20$ and so $q_\chi = 7.5\%$. For dark partner models, if they decay before thermalising the above holds with the modification that \mathcal{U}_χ^S is defined from eq. (3.17). As discussed above, this is always true at sufficiently late times and hence gives the asymptotic behaviour. However, even if Ψ -SM scattering remains efficient, we can still have this behaviour thanks to the Ψ decay still converting mass to kinetic energy. In particular, combining eq. (3.21) with the late-time approximation (2.8) for Y_Ψ gives

$$\frac{dy_\chi}{dx} \supset \frac{m_\chi y_\chi}{xHZ} \mathcal{U}_\chi^D \frac{\Gamma_\Psi}{3T_\chi Y_\chi} \frac{1}{\left(\frac{s \langle \sigma v(\chi\chi \rightarrow \Psi^\dagger V) \rangle_{T=0}}{2\Gamma_\Psi} Y_\chi^2 \right)} = \frac{1}{6} \frac{s}{xHZ} y_\chi Y_\chi x_\chi \mathcal{U}_\chi^D \langle \sigma v \rangle_{T=0}, \quad (3.25)$$

which again reproduces eq. (3.23) with $q_\chi \rightarrow \mathcal{U}_\chi^D/6$.

4 Late-time resonantly enhanced semi-annihilation

In the previous section we outlined how the presence of SA modifies the thermal evolution of dark matter. Most important is the general feature of eq. (3.23), that at late times T_χ is proportional to, and potentially larger than, the SM temperature. However, in most models we expect kinetic decoupling to occur *after* chemical decoupling, making this feature less important. One possible signal was discussed in ref. [23], where for light DM the different kinetic behaviour can modify small scale structure. Here we instead consider scenarios where the cross section is modified at low temperatures, such that number-changing processes continue to be important during epochs when $T_\chi \neq T$.

Specifically we consider weak- or TeV-scale DM where the (semi)-annihilation cross section features a narrow s -channel resonance, which we can model as a Breit-Wigner peak,

$$\sigma v \propto \frac{1}{(E^2 - M^2)^2 + M^2 \Gamma^2}. \quad (4.1)$$

Here, E is the centre of mass energy, and M and Γ are the mass and width of the intermediate resonance. At relatively high temperatures $x \sim 25$, the thermal kinetic energy is large compared to the width, $E - M \gg \Gamma$, and the first term in the numerator dominates. As the temperature drops, $E - M$ becomes comparable to the width and the total rate is enhanced. Such models have been considered as possible ways to enhance signals in indirect detection experiments while retaining thermal freeze-out [10, 12, 13, 33, 34, 43], and in particular as ways to explain the positron excess seen by AMS-02 and earlier experiments.

Naively one can obtain arbitrarily large cross sections by taking the width sufficiently small, at the cost of fine-tuning the model parameters. However, it was shown in ref. [40] that the possible enhancement available through this mechanism is bounded from above by $\mathcal{O}(10^2)$ for TeV DM. This is due to a period of enhanced annihilation during kinetic decoupling, when the DM temperature decreases rapidly and the typical kinetic energy becomes closer to the resonance. To see this more clearly, let us briefly review their argument. We define $E^2 = 4m^2(1+z)$, $M = 2m\sqrt{1-\delta}$, and $M\Gamma = 4m^2\gamma$, where m is the mass of the initial state particles; then the cross section (4.1) takes the form

$$\sigma v = \sigma_0 \frac{\delta^2 + \gamma^2}{(\delta + z)^2 + \gamma^2}, \quad (4.2)$$

where $\sigma_0 = \sigma v|_{z=0}$. For $\delta > 0$ and in the non-relativistic limit, this has thermal average [10]

$$\langle \sigma v \rangle \approx \sigma_0 \frac{\delta^2 + \gamma^2}{(\delta + \xi x^{-1})^2 + \gamma^2}, \quad (4.3)$$

where $\xi \approx 1/\sqrt{2}$ is a constant. Note that this will continue to increase with temperature till $x = x_b \approx \max[\delta, \gamma]^{-1}$. A simple estimate for the relic density is to integrate the Boltzmann equation only over the epoch where both the equilibrium density can be neglected and the cross section is constant. This tells us that the correct relic abundance is obtained for

$$\frac{\sigma_0}{\sigma_c} \approx \frac{x_b}{x_f} \approx \frac{\max[\delta, \gamma]^{-1}}{25}, \quad (4.4)$$

where $\sigma_c \approx 3 \times 10^{-26} \text{ cm}^3 \text{ s}^{-1}$ is the usual thermal cross section. Eq. (4.4) assumes equality of the temperatures of the two sectors; if the dark and visible sectors kinetically decouple at some temperature $x_{kd} \in (x_f, x_b)$, then we must replace x_b with the SM temperature when $T_\chi = m_\chi/x_b$. For conventional DM that redshifts as matter, $x_\chi = x^2/x_{kd}$, this temperature is $x'_b \approx \sqrt{x_{kd}} \max[\delta, \gamma]^{-1/2} < x_b$, resulting in a smaller value of σ_0 . To get the maximum possible cross section today we must evaluate eq. (4.2) for $z \sim 10^{-6}$,

$$\sigma_G \approx \sigma_0 \frac{\max[\delta, \gamma]^2}{\max[\gamma^2, \delta^2, 2\delta z]} \sim \sigma_0 \min[1, 10^6 \max[\delta, \gamma]]. \quad (4.5)$$

This suggests that the maximum possible boost occurs for $\delta \sim \gamma \sim 10^{-6}$, which is supported by more careful numerical calculations of ref. [40]. Finally, that work made the additional assumption that thermal contact between the SM and DM is maintained by the same couplings responsible for annihilation. That implies the upper limit $\sigma_G \lesssim 10^2 \sigma_c$; and the maximum enhancement is only obtained when x_{kd} is comparable to the usual temperature of freeze-out, $x_f \sim 25$.

The last assumption is key. It is well-motivated both on the grounds of minimality, and that any coupling which allows the DM to scatter off the SM will also contribute to DM annihilation. But there are two obvious loopholes, both of which we will exploit. First, for any DM model, interactions that lead to p -wave annihilation will be suppressed compared to s -wave processes that determine the relic density and indirect detection signals, but can still dominate the scattering rate. This requires multiple mediators between the dark

and visible sectors, but this is not rare in top-down models and can even be required for UV-completeness [44–47]. In models where SA (dominantly) determines the relic density, any scattering *must* involve different (combinations of) interactions, and so they naturally fall into this category.

The second loophole is precisely the point discussed in section 3.3: after kinetic decoupling, the temperature of SADM *does not* redshift as matter. Additionally, for cross sections which are enhanced at low temperatures, eq. (3.23) demonstrates that the temperature after decoupling is typically higher than the SM. This could potentially allow $x'_b > x_b$, increasing the enhancement over what would be expected from eq. (4.4). It also raises the possibility of models where scattering is absent, and the DM temperature is maintained only by SA; however, we defer this more exotic possibility to future work.

There is one additional extension we make. It was shown in ref. [13] that eq. (4.1) is an inadequate approximation when the resonance is nearly on-shell. The Breit-Wigner propagator is an approximation that neglects some of the energy dependence. Specifically, the Green’s function is

$$D_F^{-1}(E) = E^2 - M_0^2 - \mathcal{M}_2^2(E) = E^2 - M_0^2 - \Re\mathcal{M}_2(E) - i\Im\mathcal{M}_2(E), \quad (4.6)$$

where M_0 is the bare (unrenormalised) mass and \mathcal{M}_2 encodes loop corrections. Ordinarily it is satisfactory to take the loop correction as a constant evaluated at the physical mass M , where the Cutkosky rules give $\Im\mathcal{M}_2(M) = M\Gamma$. However, this breaks down in the presence of a threshold for a new decay, where the imaginary part changes rapidly. Small δ by definition means that non-relativistic processes are taking place near such a threshold, and is especially prominent from taking $z \sim \delta$ in eq. (4.5). To correct for this effect we make the replacement $M\Gamma \rightarrow E\Gamma(E)$, where $\Gamma(E)$ is the width the resonance *would* have, if it had mass E (and all other model parameters were unchanged). We also make the natural definition $4m^2\tilde{\gamma}(z) = E\Gamma(E)$. For $\delta > 0$, the on-shell resonance cannot decay to DM, but that process *will* contribute to $\Gamma(E)$ for all $E \geq 2m$. Large enhancements require small resonance-DM couplings, so that $\Gamma(E) \sim \Gamma$ near threshold. Since we need $\Gamma(E) \sim 10^{-6}M$ to maximise eq. (4.5), the *actual* width that maximises the enhancement will be slightly smaller. However, since $\Gamma(E)$ is a monotonically increasing function, the width at low temperatures is less than at high, and so this represents a modest increase in the overall enhancement.

5 UV-complete simplified model

We now construct a simplified model to serve as a case study of the phenomenology discussed so far. Our intention is to fit the AMS-02 positron excess using the process $\chi\chi \rightarrow \Psi^\dagger\mu_R$, so our theory must contain a minimum of three states charged under the dark sector symmetry: the dark matter χ , a fermion dark partner Ψ , and a bosonic resonance Φ . We take the minimal case for Φ (a SM-singlet complex scalar) and Ψ (a Dirac fermion). We consider fermion dark matter to avoid a tree-level Higgs portal annihilation channel. As discussed in section 2, the symmetry that stabilises χ must be equivalent to a global \mathbb{Z}_3 , so for simplicity we make that choice.

Particle	Spin	$\mathcal{D} = \mathbb{Z}_3$	$SU(2)_L \times U(1)_Y$
χ	1/2	$\exp 2\pi i/3$	1_0
Ψ	1/2	$\exp 2\pi i/3$	1_{-1}
Φ	0	$\exp 2\pi i/3$	1_0
Σ	0	$\exp 2\pi i/3$	$2_{1/2}$

Table 1. New particle content in our simplified model.

A model with this dark matter and dark partner was among those catalogued using effective field theories in ref. [3], which also discussed the possible choices for the dark partner decay. The minimal possibility involving muon final states is the three-body decay $\Psi \rightarrow \chi\mu\bar{\nu}$, which can be derived from the dimension-7 operator

$$\mathcal{L}_{\text{decay}} = \frac{1}{\Lambda^3} (\bar{\Psi}\mu_R) ((\bar{L}\tilde{H})\chi), \quad (5.1)$$

where $\tilde{H} = i\sigma^2 H^*$ and L is the (left-handed) lepton doublet. Constructing a UV-complete theory requires opening this operator into renormalisable terms. There are eight possible ways to do this at tree-level. We choose the unique option which introduces only one additional degree of freedom: a complex scalar doublet Σ , charged under \mathcal{D} and coupling χ and L . This Yukawa coupling will also lead to $\chi L \rightarrow \chi L$ scattering that maintains thermal contact to $x \sim 10^3$, provided that Σ is not too heavy.

The sum total of new particles is listed in table 1. The Lagrangian is

$$\mathcal{L} = \mathcal{L}_{\text{SM}/V(H)} + \mathcal{L}_{\text{kin}} + \mathcal{L}_Y - V(H, \Phi, \Sigma), \quad (5.2)$$

with kinetic terms

$$\mathcal{L}_{\text{kin}} = \bar{\chi}(i\not{\partial} - m_\chi)\chi + \bar{\Psi}(i\not{\mathcal{D}} - m_\Psi)\Psi + |\partial_\mu\Phi|^2 + |D_\mu\Sigma|^2, \quad (5.3)$$

Yukawa interactions

$$\mathcal{L}_Y = g_\chi \Phi \bar{\chi}^c \gamma^5 \chi + g_\Psi \Phi \bar{\Psi} \mu_R + g_\Sigma \Sigma \bar{\chi} L + h.c., \quad (5.4)$$

and scalar potential

$$\begin{aligned} V(H, \Phi, \Sigma) = & \frac{1}{2} \lambda_h \left(H^\dagger H - \frac{1}{2} v_h^2 \right)^2 + m_\Phi^2 \Phi^\dagger \Phi + m_\Sigma^2 \Sigma^\dagger \Sigma + \frac{1}{2} \lambda_\Phi (\Phi^\dagger \Phi)^2 + \frac{1}{2} \lambda_\Sigma (\Sigma^\dagger \Sigma)^2 \\ & + \lambda_{h\Phi} \left(H^\dagger H - \frac{1}{2} v_h^2 \right) \Phi^\dagger \Phi + \lambda_{h\Sigma} \left(H^\dagger H - \frac{1}{2} v_h^2 \right) \Sigma^\dagger \Sigma + \lambda_{\Phi\Sigma} \Phi^\dagger \Phi \Sigma^\dagger \Sigma \\ & + \left(\mu_\Sigma \Phi \Sigma^\dagger H + \frac{1}{6} \mu_\Phi e^{i\alpha_\Phi} \Phi^3 + \frac{1}{2} \lambda_3 e^{i\alpha_3} (\Phi^\dagger)^2 \Sigma^\dagger H + h.c. \right). \end{aligned} \quad (5.5)$$

We have used phase rotations to set the Yukawa couplings and μ_Σ to be real and positive without loss of generality. All other couplings are automatically real except the last two on the last line of eq. (5.5), where we have written the phases explicitly. We chose the Φ -dark matter Yukawa to be a pseudoscalar-like coupling in order to have s -wave semi-annihilation.

Note that if we did not include the Σ field, there would be an additional accidental \mathbb{Z}_4 symmetry under which $\chi \rightarrow i\chi$, $\Psi \rightarrow -\Psi$ and $\Phi \rightarrow -\Phi$. This would enforce dark partner stability for the mass range of interest, $m_\Psi < 2m_\chi, m_\Phi$. Further, this symmetry is restored in the limit $\mu_\Sigma, \mu_\Phi, \lambda_3 \rightarrow 0$, which means it is technically natural for all three couplings to be simultaneously small. In appendix B, we outline a theory where \mathcal{D} is a residual subgroup of $U(1)_{L_\mu-L_\tau}$, where $\mu_\Phi = \lambda_3 = 0$ and μ_Σ is technically natural by itself. This alternate theory can also explain the particular flavour structure of the Yukawa couplings, by forbidding interactions with the tau or electron prior to the breaking of the flavour symmetry.

The scalar cubic coupling μ_Σ introduces a mass mixing between the resonance Φ and the neutral component Σ^0 of the extra doublet. This mixing is necessary to allow the dark partner to decay, but the coupling introduces an additional decay mode for the resonance, $\Phi \rightarrow \Sigma H^\dagger$. This must be subdominant to the decay to the dark partner, since it will produce a large number of soft photons from Higgs and gauge boson decay and is subject to stringent constraints from CMB observations and galactic centre observations. For $\Gamma_\Phi \sim 10^{-6} m_\Phi$, the relevant region of parameter space is

$$g_\Psi \lesssim 10^{-2}, \quad \mu_\Sigma \lesssim 5 \times 10^{-3} m_\Phi. \quad (5.6)$$

For TeV-scale DM, this corresponds to GeV-scale μ_Σ .

We introduced the coupling g_Σ as a UV completion of eq. (5.1) to allow Ψ to decay. However, it also leads to two other phenomenologically important processes: DM-SM scattering and DM annihilation to the visible sector. In particular, we want the former to be important while keeping the latter small. This can be achieved as the scattering process is also resonantly enhanced (though much less so than our main processes of interest). We can estimate the kinetic decoupling temperature T_{kd} by equating the expansion rate to the scattering momentum transfer rate,

$$H(T_{kd}) \approx n_L \langle \sigma v \rangle_s \frac{T_{kd}}{m_\chi}, \quad (5.7)$$

where n_L is the number density of L , and the factor of T_{kd}/m_χ represents the approximate momentum transfer per collision. This gives us a relation between y_Σ and $x_{kd} = m_\chi/T_{kd}$, which we can then insert in the annihilation cross section:

$$\sigma_{an} v = 0.77 \text{ pb} \left(\frac{x_{kd}}{10^3} \right)^4 \left(\frac{1 \text{ TeV}}{m_\chi} \right)^2 \left(\frac{m_\Sigma^2 - m_\chi^2}{m_\Sigma^2 + m_\chi^2} \right)^2. \quad (5.8)$$

Compared to the thermal relic cross section, this is already suppressed by over an order of magnitude for $m_\Sigma \approx 1.4 m_\chi$, with greater suppression for lighter Σ . Annihilation will be a subleading correction to the thermal relic density, and negligible compared to SA for indirect detection today.

There are two important qualitatively different phases in this model, according to whether the dark partner decays through the direct three-body (3B, $\Psi \rightarrow \chi \mu \nu$) or sequential two-body (S2B, $\Psi \rightarrow \Sigma \mu$, $\Sigma \rightarrow \chi \nu$) channel. This will lead to different spectra of the

muon decay product, and ultimately of the positrons produced in muon decay. In particular, the latter process produces a harder spectrum, where the muon is monochromatic in the dark partner rest frame. In the following section, we will see how this qualitative difference affects the ability to explain the positron excess.

6 Fitting the AMS-02 positron excess

In this section we investigate how well the DM model described above can explain the AMS-02 positron excess. We do not consider factors such as the relic density or other experimental constraints, but simply focus on what masses and cross sections provide the optimal fit to the data. Rather than attempt a full parameter scan, we consider two ansatzes for the ratios of dark sector masses $\rho_\Psi \equiv \frac{m_\Psi}{m_\chi}$ and $\rho_\Sigma \equiv \frac{m_\Sigma}{m_\chi}$, namely

$$\{\rho_\Sigma, \rho_\Psi\} = \begin{cases} \{1.2, 1.3\} & \text{S2B,} \\ \{1.4, 1.3\} & \text{3B.} \end{cases} \quad (6.1)$$

This reduces the relevant parameter space to the DM mass m_χ and SA cross section $\langle\sigma v(\chi\chi \rightarrow \bar{\Psi}\mu)\rangle$. Other processes can be neglected as they are either not resonantly enhanced (e.g. annihilation $\chi\bar{\chi} \rightarrow \mu\bar{\mu}$), or suppressed by small μ_Σ as discussed around eq. (5.6).

To study DM (semi)-annihilation, we implement this model in `FeynRules` [48]. Since DM in the galaxy today has a velocity $v \sim 10^{-6}$, we can efficiently simulate the kinematics of the final states using only the decay of the resonance Φ . We generate parton-level events for the resonance decay in `MadGraph` [49]. Showering and hadronisation are later performed with `PYTHIA 8.2` [50]. We cross-checked the positron spectra per annihilation derived this way by using the same tools to analyse DM annihilation to muon pairs, and comparing with `PPPC 4 DM ID` [51]. There are minor discrepancies for positron energies above a few hundred GeV, due to the absence of electroweak (EW) corrections in our spectra. However, experimental uncertainties at high positron energies are relatively large, such that including EW corrections would hardly change the results of the analysis. We show the positron spectrum generated this way in figure 2 for our two choices of $\rho_{\Psi,\Sigma}$ and a fixed DM mass $m_\chi = 1.5$ TeV. The two spectra are very similar, though we see that the S2B decay mode leads to slightly harder positrons, as expected based on our qualitative arguments of the previous section.

The propagation of the positron spectra from their point of origin to detection can be performed using the diffusion-loss equation [52],

$$\frac{\partial f}{\partial t} - \nabla(\mathcal{K}(E, \vec{x})\nabla f) + \vec{V}_c \cdot \vec{\nabla} f - \frac{\partial}{\partial E}(b(E, \vec{x})f) = Q(E, \vec{x}), \quad (6.2)$$

where $f(t, \vec{x}, E)$ is the positron number density, \mathcal{K} the diffusion coefficient, V_c the galactic wind, b the energy loss coefficient function and Q the source term. This last object contains the particle physics input:

$$Q = \frac{1}{2} n_\chi^2 \sum_f \langle\sigma v\rangle_f \frac{dN_{e^+}^f}{dE} \approx \frac{1}{4} n_\chi^2 \langle\sigma v(\chi\chi \rightarrow \bar{\Psi}\mu)\rangle \frac{dN_{e^+}^{SA}}{dE}, \quad (6.3)$$

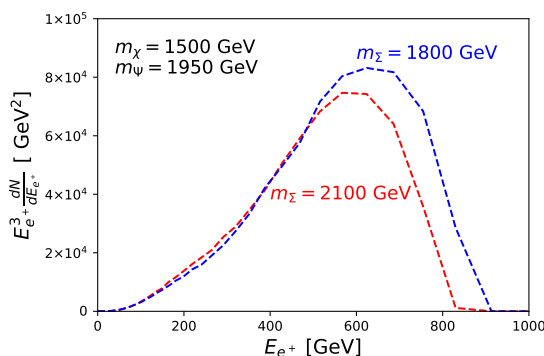


Figure 2. Positron spectrum at production for the two dark partner decays modes, with S2B (3B) in blue (red). The specific parameters are as labelled.

Model	δ	K_0 [kpc ² /Myr]	L [kpc]	V_c [km/s]
MIN	0.85	0.0016	1	13.5
MED	0.70	0.0112	4	12
MAX	0.46	0.0765	15	5

Table 2. Parameters for propagation models MIN, MED and MAX. L is the height of the galactic disc, V_c the magnitude of the galactic wind, and K_0 and δ are the parameters of eq. (6.4).

where we assume that SA dominates due to the resonant enhancement. The additional factor of one-half is due to a difference in how the cross sections are normalised; $\langle\sigma v\rangle_f$ averages over both particle and anti-particle, while $\langle\sigma v(\chi\chi \rightarrow \bar{\Psi}\mu)\rangle$ does not. The remaining terms in eq. (6.2) describe the propagation itself, and different choices of these parameters allow us to explore the astrophysical uncertainties. As the goal of this work is to explain the positron spectrum with dark matter physics, we restrict ourself to the choice of several benchmark scenarios. For the diffusion coefficient and galactic wind, we consider the MIN, MED and MAX models defined in refs. [53, 54] as illustrative of the range of possibilities. These model the galaxy as a disc of varying height L and parameterise the diffusion coefficient as

$$\mathcal{K}(E) = K_0 (E/\text{GeV})^\delta, \tag{6.4}$$

with the specific model parameters given in table 2. The energy loss function depends on the galactic magnetic field, for which we use the parameterisation of ref. [55],

$$B_{\text{tot}} = B_0 \exp\left(-\frac{r - r_\odot}{r_D} - \frac{|z|}{z_D}\right), \tag{6.5}$$

where (r, z) are the Galactic coordinates, r_\odot the location of the Sun, and the different choices of B_0 , r_D and z_D are given in table 3. Other possible uncertainties come from the choice of DM density profile. As detailed in the following section, cuspy profiles such as NFW or Einasto are heavily constrained by the absence of a γ -ray signal from the galactic centre, so we use an isothermal profile (Iso) as representative of a cored distribution. With

Magnetic Field	B_0 [μG]	r_D [kpc]	z_D [kpc]
MF1	4.78	10	2
MF2	5.1	8.5	1
MF3	9.5	30	4

Table 3. Parameters for the magnetic field parameterisation of eq. (6.5).

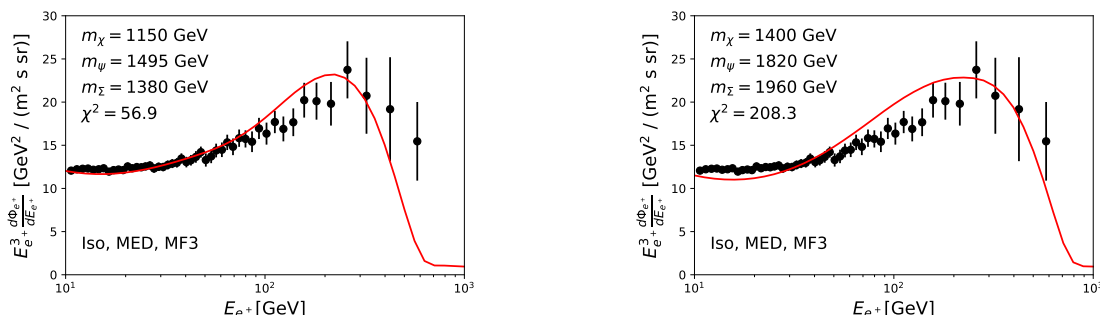


Figure 3. The best fit spectra for the S2B (left) and 3B (right) cases. The points mark the AMS data with error bars.

these choices, we can integrate the diffusion equation using the numerical Green’s functions provided by PPC 4 DM ID [55].

In addition to the primary positrons from SA, we must include the astrophysical contribution to the positron flux. Pulsars are a potential source of primary positrons, and have been used as an alternative explanation for the excess [30–32]. As we are focusing on DM explanations, we do not include any such contribution. Secondary cosmic positrons are produced by spallation reactions of cosmic nuclei with interstellar medium. The predicted spectra vary with the choice of modelings of nuclear cross sections and the propagation parameters [56]. We adopt the secondary positron flux proposed in the model from ref. [29] and parameterised in ref. [57] as

$$\frac{d\Phi_{e^+}^{\text{sec}}}{dE_{e^+}} = \frac{4.5 E_{e^+}^{0.7}}{1 + 650 E_{e^+}^{2.3} + 1500 E_{e^+}^{4.2}} \text{ GeV}^{-1} \text{ cm}^{-2} \text{ s}^{-1} \text{ sr}^{-1}, \quad (6.6)$$

where E_{e^+} is the positron energy in GeV.

With these choices, we vary our parameters in the DM model space and over our discrete set of astrophysical ansatzes. We add the positron spectra generated this way to the secondary flux of eq. (6.6). We restrict our attention to energies $E_{e^+} > 10$ GeV; below this point, the contribution to the flux from DM is negligible compared to the secondary background, while the experimental uncertainties are very small, and the quality of our fit would be driven by astrophysics rather than the particle physics we focus on. We show the best fit spectra for each decay mode in figure 3; the associated SA cross sections are $\langle\sigma v\rangle = 3.5 \times 10^{-23} \text{ cm}^3 \text{ s}^{-1}$ and $2.6 \times 10^{-23} \text{ cm}^3 \text{ s}^{-1}$ respectively, with a statistical uncertainty of 1–2%. For positron spectrum with energy larger than 10 GeV, the best fits have $\chi^2 = 56.9$ and 208.3 for 49 degrees of freedom.

7 Thermal relic density and late-time cross section enhancement

In the previous section, we showed that SA can provide a good fit to the AMS positron excess for TeV-scale DM and a cross sections $\sigma(\chi\chi \rightarrow \Psi^\dagger\mu) \approx 3 \times 10^{-23} \text{ cm}^3 \text{ s}^{-1}$. As expected, this cross section is several orders of magnitude larger than the thermal relic cross section. In this section we show that the model of section 5 can simultaneously explain this signal cross section and provide the correct relic density due to the s -channel resonance. We also discuss other experimental bounds, most notably from the CMB but also other indirect channels such as gamma rays.

The majority of the technical details for χ freeze out have already been discussed in a general context in sections 3 and 4, but there are some specific points in this model that need explanation. Most important is the presence of the additional scalar Σ , which can be produced by $\chi\chi$ SA and dark partner decay, and has two-body decay to DM. All our Boltzmann equations will explicitly depend on f_Σ , which in general requires its own set of evolution equations. However, we exploit the relatively large width for the two-body decay, $\Gamma_\Sigma/m_\Sigma \sim g_\Sigma^2/8\pi \sim 10^{-3}$. As discussed below eq. (2.9), this decay dominates over both expansion and production prior to χ freeze-out, especially given that SA production is somewhat suppressed. We can use a variant of eq. (2.7) to approximate for Y_Σ at all times:

$$Y_\Sigma \approx Y_\chi \frac{Y_\Sigma^{\text{eq}}}{Y_\chi^{\text{eq}}} \mathcal{S}^{(\Sigma)}(T, T_\chi) + \frac{1}{2} \Theta(m_\Psi - m_\Sigma) \frac{\Gamma_\Psi}{\Gamma_\Sigma} Y_\Psi + \frac{s \langle \sigma v(\chi\chi \rightarrow \Sigma^\dagger H) \rangle_{\text{neq}}}{4\Gamma_\Sigma} Y_\chi^2, \quad (7.1)$$

where Θ is the Heaviside-Lorentz function. We included an additional term for the contribution of dark partner decay. This is relevant despite the small ratio of widths, $\Gamma_\Psi/\Gamma_\Sigma \lesssim 10^{-10}$, because $Y_\Psi \propto \Gamma_\Psi^{-1}$ at late times as can be seen from eq. (2.8). We also corrected the contribution from inverse decay due to $T_\chi \neq T$ using a variation of eq. (3.12),

$$\mathcal{S}^{(\Sigma)}(T, T_\chi) = \frac{n_\chi^{\text{eq}}(T)}{n_\chi^{\text{eq}}(T_\chi)} \int dE_\chi \frac{dN_\chi}{dE_\chi} \approx \exp\left(-\frac{(m_\Sigma - m_\chi)^2}{2m_\Sigma m_\chi} \Delta_\chi\right), \quad (7.2)$$

with dN_χ/dE_χ the spectrum of DM produced in Σ decay. The second equality assumes the non-relativistic limit and that Σ is at rest; this will be a good approximation if inverse decay dominates production, which is when this correction is most important. Accordingly, we use eq. (7.1) to replace for Y_Σ whenever it appears in our Boltzmann equations. For computing the contributions of inverse processes, we assume Σ is in kinetic equilibrium with the SM; this is true whenever they are relevant, as inverse decay processes dominate Σ production during these early epochs. However, when computing the effect of SA on T_χ , we follow the discussion on prompt decays in section 3.2 and approximate production and decay as a single process.

The dark partner lifetime is highly suppressed by our demand that Σ - Φ mixing be small. Even for the more rapid two-body decay, the lifetime is parametrically

$$\frac{\Gamma_\Psi}{m_\Psi} \sim \frac{g_\Psi^2}{32\pi} \sin^2 \theta \left(1 - \frac{m_\Sigma^2}{m_\Psi^2}\right)^2 \sim 10^{-15}, \quad (7.3)$$

where θ is the appropriate mixing angle. The three-body decay is naturally even smaller. Note that as discuss in section 3.2, this is a slow enough decay that the DP thermalises

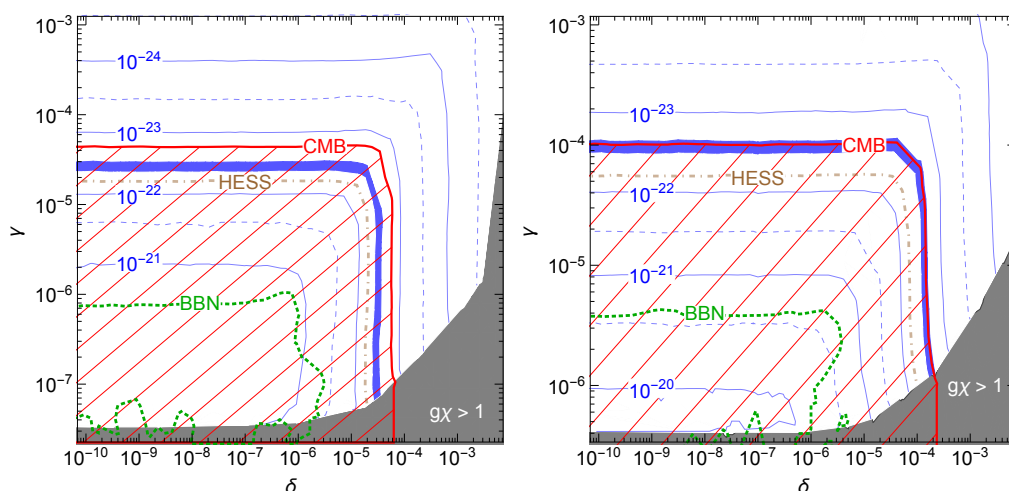


Figure 4. SA cross-sections in the galaxy today after imposing the relic density constraint, in the $(\delta-\gamma)$ plane, for the sequential two-body (left) and three-body (right) decay modes. The blue contours are labelled in cm^3s^{-1} ; the shaded blue regions explain the results of section 6. The red hatched area is excluded by CMB measurements; we also show sub-leading constraints from H.E.S.S. observations of the galactic centre (brown dot-dashed line) and BBN (green dotted line). The grey shaded area is where the relic density can not be obtained with SA coupling $g_\chi < 1$. The CMB constraints fully (partially) exclude the S2B (3B) preferred region, but these bounds can be weakened in the presence of a small $\mathcal{O}(1)$ substructure enhancement. See the text for more details.

before decay till at least $x \gtrsim 10^3$. We therefore make the approximation that Ψ has the same temperature as the SM in evaluating processes that involve it.

We are left with three Boltzmann equations, for $Y_{\chi,\Psi}$ and y_χ . We numerically integrate these till Y_χ and y_χ/x are approximately constant, and Y_Ψ is given by eq. (2.8). We cross-check our numerical code by comparing to micrOMEGAs 4.1 [11, 58] for semi-annihilating non-resonant models with $T_\chi = T$, from which we include a 15% theoretical uncertainty in the relic density. Our model contains a large number of parameters; at a minimum, the relic density depends on four masses, three Yukawas, and the cubic coupling μ_Σ . Rather than attempt a detailed scan of the whole model space, we focus on the values of m_χ , m_Ψ and m_Σ corresponding to our two best-fit points in the previous section. We fix the Σ - Φ mixing angle θ to discrete values, which determines the cubic coupling; set $g_\Sigma = 1$, to maximise the scattering cross section while remaining perturbative; use the relic density to fix g_χ ; and convert the remaining parameters $\{m_\Phi, g_\Psi\} \rightarrow \{\delta, \gamma\}$. We also apply the conservative constraint that $g_\chi \leq 1$ to ensure numerical stability; as discussed in section 4, we expect large enhancements to require small DM-resonance coupling, so this should not significantly effect the preferred parameter space.

The results are plotted in figure 4 for $\sin\theta = 10^{-4}$, or $\mu_\Sigma \sim 2\text{ GeV}$. We found little qualitative difference for other values of $\sin\theta < 10^{-3}$, beyond two restrictions on the parameter space. There is a lower bound on γ coming from the decay $\Phi \rightarrow \Sigma H^\dagger$,

$$\gamma \gtrsim \frac{\mu_\Sigma^2}{8\pi m_\Phi^2} \sim \frac{m_\Phi^2 - m_\Sigma^2}{4\pi v_h^2} \sin^2\theta \sim 5 \sin^2\theta. \quad (7.4)$$

This explains the region plotted in figure 4, and reduces the parameter space for smaller mixing angles. For larger mixing angles, the parameter space does not increase as values of $\gamma \lesssim 10^{-8}$ require $g_\chi > 1$ to reproduce the correct relic density. Our choice of mixing angle then is roughly maximal in the $\{\delta, \gamma\}$ plane. Aside from these effects, $\sin\theta$ only changes the rate for $\chi\chi \rightarrow \Sigma^\dagger H$, which for $\sin\theta \lesssim 10^{-3}$ is always subdominant; and so the signal cross section is independent of θ and the relic density only weakly dependent on it.

The most important conclusion from figure 4 is that the annihilation today can reach values as large as $10^{-20} \text{ cm}^3 \text{ s}^{-1}$ while still reproducing the observed relic density. This represents an enhancement of five orders of magnitude over the thermal relic cross section for SADM, significantly larger than was found in ref. [40] for annihilating DM. The cross sections of section 6 are easily obtainable, and are shown in the blue shaded bands. As expected from eq. (4.5), the SA cross section is approximately set by $\max(\delta, \gamma)$ and hits its maximal value for $\delta \lesssim 10^{-6}$. The contribution of off-shell $\Phi \rightarrow \chi\chi$ to the imaginary part of the two-point function leads to the optimal width $\gamma \sim 10^{-7}$ and $g_\chi \lesssim 0.1$. Our condition $g_\chi < 1$ is not significantly affecting the preferred parameter space, with $g_\chi \sim 0.02$ (0.04) in most of the S2B (3B) best fit regions.

To help understand the effects of SA and kinetic decoupling, we show the evolution of T_χ , Y_χ , and Y_Ψ in figure 5. In these plots we fix $\delta = 10^{-7}$ and vary γ as labelled; all other parameters are as described above. The DM temperature relative to the SM is shown in the top row of that figure, and its behaviour is simple: $T_\chi = T$ till scattering ceases to be efficient around $x \lesssim 10^3$, after which the self-heating effect of SA increases the temperature ratio (T_χ continues to decrease, just more slowly than T). Smaller values of γ correspond to larger SA cross sections and so more warming, but also a higher asymptotic temperature ratio: models with smaller SA cross sections also reach their final value sooner. The obvious features at $x \sim 10^4$ and 10^7 in each line are SM physics: the QCD phase transition and e^+e^- annihilation at $T \approx 511 \text{ keV}$, both of which warm the SM and so lower T_χ/T .

The effect this has on Y_χ , shown in the middle row of figure 5, is relatively simple. Since T_χ does not undergo the rapid decrease discussed in section 4 for conventional DM after kinetic decoupling, SA remains effective till $x \sim \min(\gamma^{-1}, \delta^{-1})$. The relatively high DM temperature means semi-annihilation is efficient for a long time, but the enhancement is not *too* great and we obtain the correct relic density for larger y_χ than would be true without self-heating. The only notable feature occurs for $\gamma = 10^{-6}$ and the 3B decay mode, where Y_χ is approximately constant for $100 \lesssim x \lesssim 300$. This feature can be understood by examining the evolution of Y_Ψ , shown in the bottom row of figure 5. We see that in all cases, the dark partner number density rapidly approaches the approximate value of eq. (2.7) after Y_χ departs from its equilibrium value. Small values of γ correspond to small dark partner widths, increasing this asymptotic value, while the width is also larger in the 3B decay mode. In some cases, Ψ must actually be replenished above its equilibrium value by SA. For the specific case of $\gamma = 10^{-6}$ and the 3B decay mode, this increases Y_Ψ to a sufficiently large value that the reverse process, $\bar{\Psi}\mu \rightarrow \chi\chi$, becomes important again and slows the depletion of DM. This effect reduces the time available for SA to deplete the DM number density, requiring larger values of y_χ to compensate, and explains the pseudo-lower bound on γ discussed above.

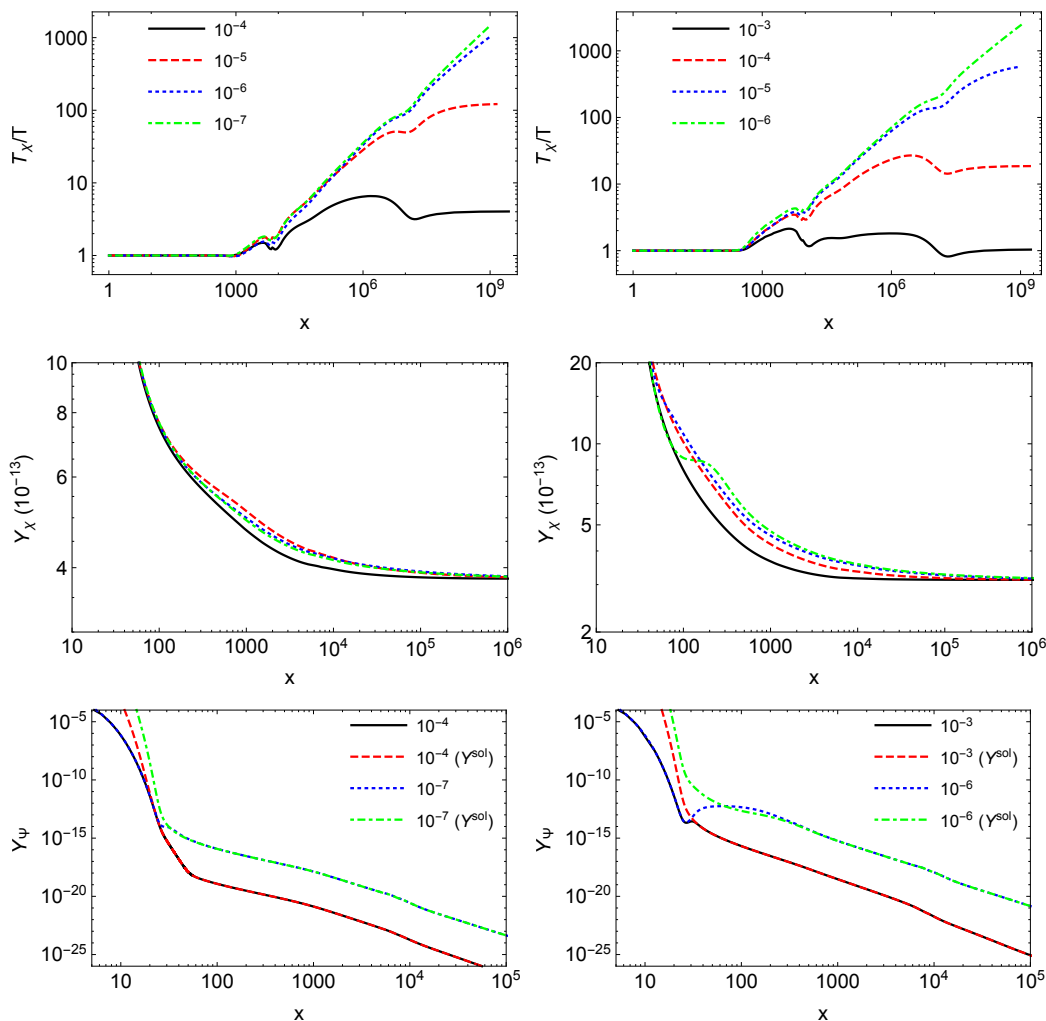


Figure 5. DM temperature T_χ (top), DM number density Y_χ (middle), and dark partner number density Y_Ψ (bottom) as a function of the SM inverse temperature x for the S2B (left) and 3B (right) decay modes and $\delta = 10^{-7}$. The top two rows plot four different values of the resonance width parameter γ as labelled in the top line. The bottom row shows both the results of our numerical integration and the approximation of eq. (2.7) for two values of γ .

The fact that Y_Ψ is well-approximated by eq. (2.7) for nearly all its evolution supports our use of eq. (7.1) for Y_Σ , rather than including an additional Boltzmann equation. As discussed in section 2, we expect our approximations to be better for states which decay more rapidly. One possible concern is that since SA remains valid till $x \sim 10^6$, we can no longer assume the dark partner will be in kinetic equilibrium with the SM, despite the very narrow widths we consider. Since Ψ -SM scattering transfers energy from the dark sector, it has the effect of *lowering* T_χ and thus *decreasing* the SA cross section. Therefore if Ψ also kinetically decouples from the SM before χ freeze out, we would need even larger values of y_χ to match the relic density. Our approach is in this sense a conservative estimate of the possible enhancement.

We also consider a number of possible constraints, of which the most robust are from the cosmic microwave background (CMB). Annihilation to electromagnetically charged states before or during recombination increases the ionisation fraction of the universe, suppressing the power spectrum at small angular scales and enhancing the polarisation power spectrum [59, 60]. The observations of these quantities then place bounds on SA at that epoch. The cross section then need not equal its present value; specifically, DM was colder then resulting in smaller $\tilde{\gamma}$ and larger cross sections. We include this effect, though the small values of g_χ in our best-fit regions make this a minor effect. We use the results of ref. [61] based on the Planck 2015 data [62], which exclude complex DM annihilating to muons at 95% if $\sigma v/m_\chi > 5.8 \times 10^{-27} \text{ cm}^3 \text{ s}^{-1} \text{ GeV}^{-1}$. The limit is weaker for our model as only 39% (35%) of the collision energy is transmitted to the muons for the S2B (3B) case. This still excludes all the preferred S2B parameter region; this can be reopened with a small additional substructure enhancement, at the cost of model elegance. The 3B case is not completely excluded, due to the smaller preferred cross section and that less of the collision energy being mediated to muons. There are also CMB bounds from the other SA channel, $\chi\chi \rightarrow \Sigma H$, as well as direct annihilation. The former are suppressed by the smaller cross section and that even less energy is deposited into the visible sector, and for $\sin\theta = 10^{-4}$ are an order of magnitude smaller. The annihilation bounds are negligible as the cross section is orders of magnitude weaker than for SA.

An additional early-Universe constraint comes from big-bang nucleosynthesis (BBN). DM (semi)-annihilations can modify the predictions for the primordial elemental abundances; in particular, leptonic final states can induce photo-dissociation of ${}^4\text{He}$ [63], leading to stronger bounds than the CMB constraints in some models. Ref. [64] studied the effect of DM with Breit-Wigner-enhanced cross sections, and found an approximate bound of $\sigma v \lesssim 5 \times 10^{-22} \text{ cm}^3 \text{ s}^{-1}$ for real DM annihilating at $T_{\text{SM}} \approx 10^{-4} \text{ MeV}$. Including a factor of 2 for complex DM, the fraction of the collision energy transmitted to the muons, and the post-decoupling evolution of T_χ , we get the constraints shown by the green dotted line in figure 5.

The next most important constraints are those from galactic centre annihilation. In particular, cuspy DM profiles lead to bounds on TeV-scale DM from the H.E.S.S. telescope that are only slightly weaker than the thermal relic cross section [65]. These exclude all the parameter space plotted in figure 4, hence our focus on cored density profiles in section 6. The bounds on complex DM annihilating to light quarks for a cored NFW profile are $6 \times 10^{-23} \text{ cm}^3 \text{ s}^{-1} \text{ GeV}^{-1}$ [66], which we use as a conservative estimate for the bounds on annihilation to muons. The resultant limits are weaker than those from the CMB, and also do not reach the best-fit regions. Future bounds from CTA are likely to improve constraints by up to an order of magnitude [67].

Finally, we briefly comment on direct and collider searches. These are to a good approximation independent of δ and γ . DM-nucleon scattering arises at one loop through Higgs, Z , and photon penguins. We follow ref. [68] and find that the photon-mediated

interaction dominates, leading to a differential cross section [69]

$$\frac{d\sigma}{dE_R} \approx \frac{\alpha^2}{4\pi} \mu_\chi^2 Z^2 \left(\frac{1}{E_R} - \frac{m_A}{2\mu_{\chi A}^2 v^2} \right) F_{SI}^2(E_R) + \frac{m_A}{2\pi v^2} A_{\text{eff}}^2 F_{SI}^2(E_R). \quad (7.5)$$

Here, E_R is the recoil energy, v the DM incident velocity, m_A the nucleon mass, $\mu_{\chi A}$ the DM-nucleon reduced mass, F_{SI} the nuclear form factor, and we have neglected the spin-dependent term. The DM magnetic moment μ_χ and charge radius coupling A_{eff} are approximately

$$\mu_\chi \approx \frac{g_\Sigma^2}{8m_\chi} \left(1 - \frac{m_\Sigma^2}{m_\chi^2} \log \left[1 - \frac{m_\chi^2}{m_\Sigma^2} \right] \right) \sim 10^{-4} \text{ GeV}^{-1}, \quad (7.6)$$

$$A_{\text{eff}} \approx \frac{\alpha g_\Sigma^2 Z}{12\pi (m_\Sigma^2 - m_\chi^2)} \log \left[\frac{m_\Sigma}{m_\mu} \right] \sim Z 10^{-9} \text{ GeV}^{-2}. \quad (7.7)$$

The two contributions to eq. (7.5) are similar in magnitude, though the second term is always larger. We can make a simple estimate of the constraints by integrating the differential cross section using the Helm form factor [70] and averaging over a Maxwell-Boltzmann DM velocity distribution [71]. This gives a per-nucleon cross section for Xenon of $\Sigma_N \approx 1.6(1.8) \times 10^{-49} \text{ cm}^2$ in the S2B (3B) case, three orders of magnitude below the current Xenon 1T limit of $2 \times 10^{-46} \text{ cm}^2$ [72]. The analysis of ref. [69] that includes the full effect of the photon-mediated recoil spectrum suggests that there might be sensitivity for the full data set of Xenon 1T; otherwise we must wait for next-generation experiments such as DARWIN [73].

Since all our dark sector particles are at the TeV-scale, only the LHC has reach for direct production. The absence of any new coloured particles results in no sensitivity. The scalar Σ^+ behaves very similarly to a smuon, being produced through electroweak processes and decaying to a muon plus missing energy. The current bounds from CMS and ATLAS are $m_\Sigma \gtrsim 450 \text{ GeV}$ [74] and 350 GeV [75], respectively. The bounds on the dark partner are weaker, due to its visible decay products being softer. Precision observables in the lepton sector can also be highly constraining; in particular, flavour-changing neutral currents essentially force us to consider a χ - Σ Yukawa coupling only to muons, with zero tau or electron component. The next most interesting observable is the muon anomalous magnetic moment, where the one-loop contribution is [68, 76]

$$a_\mu = -\frac{g_\Sigma^2}{32\pi^2} \frac{m_\mu^2}{m_\Sigma^2} f\left(\frac{m_\chi^2}{m_\Sigma^2}\right) \approx \begin{cases} -1.75 \times 10^{-12} & \text{S2B,} \\ -9.57 \times 10^{-13} & \text{3B,} \end{cases} \quad (7.8)$$

where

$$f(x) = \frac{1 - 6x + 3x^2 + 2x^3 - 6x^2 \log(x)}{6(1-x)^4}. \quad (7.9)$$

This has the wrong sign to explain the discrepancy [77] $\Delta a_\mu = a_\mu^{\text{exp}} - a_\mu^{\text{SM}} = 288 \pm 63 \pm 49 \times 10^{-11}$. However, the additional term is smaller than the uncertainty on Δa_μ and so our model is no less compatible than the SM.

8 Conclusions

Semi-annihilation is a generic feature of particle dark matter phenomenology that is resistant to searches at colliders and direct detection experiments. With cosmic ray searches being the primary tool to explore SADM phenomenology today, it is important to study the range of potential signals that can exist. In this work, we have considered models where SA is enhanced at low temperatures, allowing for greater cross sections today than during thermal freeze-out. Such models are of obvious interest, as they are likely to be the easiest to test and thus the first to be discovered or excluded.

This paper may be divided into two parts. The first consists of sections 2, 3 and 4, where we discussed general features of SADM phenomenology. We began in section 2 by reviewing the concept of *dark partners*, first introduced in ref. [3]. These are states charged under both dark and visible sector symmetries, that are not DM but can appear as final states in DM-initiated SA processes. This allows $2 \rightarrow 2$ SA with arbitrary SM final states. In addition to presenting the relevant Boltzmann equations for dark partners for the first time, we derived useful analytic approximations and asymptotic solutions given in eqs. (2.7) and (2.8).

However, our most important general results are found in section 3 (with additional details in appendix A), where we discuss the thermal evolution of SADM. We generalise earlier results from ref. [22] to include models with dark partners, and discuss the asymptotic evolution of the DM temperature, T_χ . SA converts mass into DM kinetic energy, *self-heating* the dark sector. Consequently, after DM-SM scattering ceases to be efficient, T_χ redshifts as *radiation*, not matter, despite remaining highly non-relativistic. We clarified the generality of this result, particularly how it applies to dark sectors with dark partners. Most interestingly, when the SA cross section is enhanced at late times, it is possible to have the dark sector *hotter* than the SM, at least during the radiation-dominated epoch, as shown in eq. (3.23).

In section 4 we consider the implications of this temperature evolution on one specific type of enhanced cross section, where there is an *s*-channel resonance nearly on-threshold. Annihilating DM has a *theoretical* bound on the possible enhancement of $\mathcal{O}(10^2)$ that arises from early kinetic decoupling. This does not apply to SADM due to this self-heating effect, potentially expanding the available model space.

The second part of this paper applied these general results to a case study, a specific model using a Breit-Wigner resonance to explain the positron excess seen by AMS-02 and earlier experiments. We first describe this model in section 5, with a possible UV motivation given in appendix B. This model has two important phases, according to the different decay modes of the dark partner, either a direct three-body or sequential two-body decay. In section 6 we fit the model to the AMS-02 positron data. As expected, the required cross sections are orders of magnitude larger than the thermal relic cross section. The role of the different decay modes is also clearly seen in figure 4. Finally, we solve the Boltzmann equations and compare the best-fit regions to other experimental constraints in section 7. We see that the self-heating effect allows SA to continue to deplete the DM number density till late times, $x \sim 10^6$. This in turn allows the correct relic density to

be obtained for small widths and large enhancements; SA cross sections today at least five orders of magnitude larger than the thermal relic cross section are achievable. We see that there are stringent constraints from CMB observations and, for cuspy DM profiles, γ -rays from the galactic centre; though these are generic constraints on any putative DM explanation of the positron excess. We also see that, as expected, direct and collider bounds on the SADM model are currently quite weak.

In this work, we restricted our attention to a fairly narrow possibility among the model space of SADM with interactions with a non-trivial temperature dependence. One obvious future extension is to consider other processes than an s -channel resonance. Non-perturbative interactions such as the Sommerfeld effect or bound state formation are an alternative possibility where the cross section can be enhanced at low temperatures. SA and the subsequent modification to the DM temperature could be interesting for its effect on the relic density and signals. Another line of inquiry would be to consider a more general interplay of SA, annihilation, and scattering. Our specific model included DM-SM scattering to maintain kinetic equilibrium, but the case where T_χ is determined by SA alone is potentially interesting. This could also include theories where *annihilation* is enhanced, and dominates the determination of the relic density, but SA is important as it governs the late-time temperature evolution. These ideas demonstrate that the theory space for SADM remains rich and open to investigation.

Acknowledgments

We thank Yu Gao for the discussion of positron propagation in the galaxy. This work was supported by IBS under the project code, IBS-R018-D1. AS thanks Sun Yat-sen University for its hospitality while this work was being completed.

A Boltzmann equations with kinetic decoupling

The general Boltzmann equation for the evolution of the phase space density of a particle species is

$$\hat{L}[f_i] = \hat{C}[f_i], \tag{A.1}$$

where \hat{L} is the Liouville operator encapsulating the effects of the metric (or in a cosmological sense, the expansion) and \hat{C} the collision operator describing interactions. In a FRW cosmology and taking $f_i \equiv f(E, t)$,

$$\hat{L}[f_i] = E \frac{\partial f_i}{\partial t} - H \vec{p}^2 \frac{\partial f_i}{\partial E}, \tag{A.2}$$

with H the Hubble rate. Rather than deal with eq. (A.1) directly, we deal with its moments, converting an evolution equation for a function of momentum into one for scalar functions of time (only). In particular, we note that

$$n_i = g_i \int \frac{d^3 p}{(2\pi)^3} f_i(E), \quad T_i = \frac{P_i}{n_i} = \frac{g}{3} \int \frac{d^3 p}{(2\pi)^3} \frac{\vec{p}^2}{E} f_i(E), \tag{A.3}$$

where g is the number of internal degrees of freedom, P is the pressure, and in the second relation we used the ideal gas law. Let us define the dimensionless parameters

$$Y_i = \frac{n_i}{s}, \quad y_i = \frac{m_i T_i}{s^{2/3}}, \quad x = \frac{m_0}{T}, \quad Z = \left(1 - \frac{x g'_{*S}(x)}{3 g_{*S}(x)}\right)^{-1}, \quad (\text{A.4})$$

where s is the entropy density, T the SM temperature, m_0 any reference mass, and $g_{*S}(x)$ the effective number of relativistic degrees of freedom. Then we derive the standard results

$$x s H Z \frac{dY_i}{dx} = g_i \int \frac{d^3 p}{(2\pi)^3} \frac{1}{E} \hat{L}[f_i] = g_i \int \frac{d^3 p}{(2\pi)^3} \frac{1}{E} \hat{C}[f_i], \quad (\text{A.5})$$

$$\frac{3 s^{5/3} x H Z}{m_i} \left(y_i \frac{dY_i}{dx} + Y_i \frac{dy_i}{dx} \right) - s H Y_i \left\langle \frac{p^4}{E^3} \right\rangle = g_i \int \frac{d^3 p}{(2\pi)^3} \frac{\vec{p}^2}{E^2} \hat{L}[f_i] = g_i \int \frac{d^3 p}{(2\pi)^3} \frac{\vec{p}^2}{E^2} \hat{C}[f_i], \quad (\text{A.6})$$

where the first equality in each line follows from the FRW Liouville operator, eq. (A.2), and the second trivially by eq. (A.1). Comparing eq. (A.6) to eq. (3.3), we see that the operators C_2 introduced in the latter are given by

$$C_2 = \frac{g_i}{3 m_i T_i n_i} \int \frac{d^3 p}{(2\pi)^3} \frac{\vec{p}^2}{E^2} \hat{C}[f_i]. \quad (\text{A.7})$$

The collision operator includes terms for all possible processes. However, only number changing processes have non-zero contribution to eq. (A.5) (so DM-SM and DM-DM scattering vanish), and only processes that change the total DM kinetic energy contribute to eq. (A.6) (so DM-DM scattering is zero). The general form for the integral in eq. (A.5) is [78]

$$g_i \int \frac{d^3 p}{(2\pi)^3} \frac{1}{E} \hat{C}[f_i] = - \int \left(\prod_{\alpha=i,j,k,\dots} d\Pi_\alpha \right) (2\pi)^4 \delta^{(4)} \left(\sum p \right) \sum |\mathcal{M}(ij\dots \rightarrow k\dots)|^2 \\ \times (f_i(p_i) f_j(p_j) \dots (1 \pm f_k(p_k)) \dots - f_k(p_k) \dots (1 \pm f_i(p_i))(1 \pm f_j(p_j)) \dots). \quad (\text{A.8})$$

We have introduced the Lorentz-invariant momentum integral including a factor of the internal degrees of freedom, $d\Pi_\alpha = g_\alpha d^3 p_\alpha / ((2\pi)^3 2E_\alpha)$. The integral in eq. (A.6) contains an additional factor of \vec{p}^2/E , as is clear from the definition. Making the assumptions that CP is conserved, the phase space functions can be approximated as Maxwellian, and that $f_\alpha \ll 1$ for all species leads to the usual results for the Boltzmann equation for Y_i in terms of thermally averaged (co)-annihilation cross sections. Specifically, with these assumptions the first combination of phase space factors in the second line of eq. (A.8) depends only on the the initial (dark sector) momenta. The second depends only on the total centre-of-mass frame energy, and can be rewritten using conservation of energy in terms of the equilibrium phase space factors for the initial state particles. All these terms factor out, so that

$$g_i \int \frac{d^3 p}{(2\pi)^3} \frac{1}{E} \hat{C}[f_i] = - \int d\Pi_i d\Pi_j \dots (f_i(p_i) f_j(p_j) \dots - f_i^{\text{eq}}(p_i) f_j^{\text{eq}}(p_j) \dots) \\ \times \int d\Pi_k d\Pi_l \dots (2\pi)^4 \delta^{(4)} \left(\sum p \right) \sum |\mathcal{M}(ij\dots \rightarrow k\dots)|^2. \quad (\text{A.9})$$

The second line is proportional to the cross section or decay rate multiplied by some kinetic factors. The overall expression then takes the usual form; for example, for $2 \rightarrow n$ processes defining

$$\langle \sigma v(\chi\chi^\dagger \rightarrow SM) \rangle_{\text{neq}} = \frac{g_\chi^2}{n_\chi^2} \int \frac{d^3 p_\chi}{(2\pi)^3} \frac{d^3 p_{\chi^\dagger}}{(2\pi)^3} f_\chi(p_\chi) f_\chi(p_{\chi^\dagger}) \sigma(\chi\chi^\dagger \rightarrow SM) \frac{\sqrt{(p_\chi \cdot p_{\chi^\dagger})^2 - m_\chi^4}}{E_\chi E_{\chi^\dagger}}, \quad (\text{A.10})$$

and $\langle \sigma v \rangle_{\text{eq}}$ using the equilibrium functions f_χ^{eq} , obviously implies eq. (3.2) even in the presence of kinetic decoupling, $T_\chi \neq T$. In practice we usually compute eq. (A.10) assuming that f_χ has a Maxwellian form, or physically that χ self-scattering remains efficient till after kinetic decoupling. The contribution to eq. (A.6) from annihilation can be done in the same way, giving eqs. (3.4) and (3.5). The scattering term is more complicated, since these assumptions do not apply; see ref. [42], but the final result is given by eqs. (3.6) and (3.7).

For semi-annihilation, the only relevant difference is that both the initial and final states contain a dark sector particle. However, when $T_\chi \neq T$ this prevents us from factoring the integral as in eq. (A.9). Let us first consider the case where the only external dark sector particles are dark matter. The contribution to eq. (A.5) instead takes the form

$$\begin{aligned} g_i \int \frac{d^3 p}{(2\pi)^3} \frac{1}{E} \hat{C}[f_i] = \\ - \int d\Pi_i d\Pi_j \dots f_i(p_i) f_j(p_j) \dots \int d\Pi_k d\Pi_l \dots (2\pi)^4 \delta^{(4)}(\sum p) \sum |\mathcal{M}(ij \dots \rightarrow kl \dots)|^2 \\ + \int d\Pi_k d\Pi_l \dots f_k(p_k) f_l(p_l) \dots \int d\Pi_i d\Pi_j \dots (2\pi)^4 \delta^{(4)}(\sum p) \sum |\mathcal{M}(kl \dots \rightarrow ij \dots)|^2. \end{aligned} \quad (\text{A.11})$$

The second (third) line is a thermally averaged cross sections of the forward (reverse) process. In particular, if we consider the $2 \rightarrow 2$ case $\chi\chi \rightarrow \chi^\dagger\phi$, with ϕ a visible-sector particle, then this reproduces eqs. (3.8) and (3.9).

When computing the effect of this type of SA on the DM temperature, we must include the contribution on the kinetic energy of both the initial and final states. To be concrete, let us focus on precisely the process $\chi\chi \rightarrow \chi^\dagger\phi$; then

$$\begin{aligned} C_2 = - \frac{1}{6m_\chi T_\chi n_\chi} \int d\Pi_i d\Pi_j f_i f_j \int d\Pi_k d\Pi_l (2\pi)^4 \delta^{(4)}(\sum p) \sum |\mathcal{M}(ij \rightarrow kl)|^2 \left(\frac{\vec{p}_i^2}{E_i} + \frac{\vec{p}_j^2}{E_j} - \frac{\vec{p}_k^2}{E_k} \right) \\ + \frac{1}{6m_\chi T_\chi n_\chi} \int d\Pi_k d\Pi_l f_k f_l \int d\Pi_i d\Pi_j (2\pi)^4 \delta^{(4)}(\sum p) \sum |\mathcal{M}(kl \rightarrow ij)|^2 \left(\frac{\vec{p}_i^2}{E_i} + \frac{\vec{p}_j^2}{E_j} - \frac{\vec{p}_k^2}{E_k} \right). \end{aligned}$$

Though we have written the $\vec{p}_{i,j}$ terms separately, their contribution is equal by symmetry. If we define

$$\mathcal{U}_{ij \rightarrow kl}(p_i, p_j) = \frac{1}{\sigma(ij \rightarrow kl)} \frac{1}{4\sqrt{(p_i \cdot p_j)^2 - m_i^2 m_j^2}} \int d\Pi_2 \sum |\mathcal{M}(ij \rightarrow kl)|^2 \frac{\vec{p}_k^2}{m_k E_k}, \quad (\text{A.12})$$

then we can write

$$C_2 = -\frac{n_\chi}{m_\chi} \left(\langle \sigma v(\chi\chi \rightarrow \chi^\dagger\phi) \rangle_{2,\text{neq}} + \frac{m_\chi}{6T_\chi} \langle \sigma v(\chi\chi \rightarrow \chi^\dagger\phi) \mathcal{U}_{\chi\chi \rightarrow \chi^\dagger\phi} \rangle_{\text{neq}} \right) - \frac{n_\phi^{\text{eq}}}{m_\chi} \left(\frac{m_\chi}{3T_\chi} \langle \sigma v(\chi^\dagger\phi \rightarrow \chi\chi) \mathcal{U}_{\chi^\dagger\phi \rightarrow \chi\chi} \rangle_{\text{neq}} - \langle \sigma v(\chi^\dagger\phi \rightarrow \chi\chi) \rangle_{2,\text{neq}} \right). \quad (\text{A.13})$$

This expression is exact and (unlike those in refs. [22, 23]) defined for any phase space distribution. It can also be extended to $2 \rightarrow n$ processes with an appropriate change to eq. (A.12).

Before discussing some simplifications of eq. (A.13), let us comment on the two terms with factors of m_χ/T_χ that become large at low temperatures. For the third term in eq. (A.13), this enhancement is not realised. The reverse process $\chi\phi^\dagger \rightarrow \chi\chi$ requires the initial states to have a minimum kinetic energy to proceed, and as such will be exponentially suppressed by the phase space factors at late times. In contrast, the second term in eq. (A.13) can proceed at threshold and has no such suppression. Indeed, in the non-relativistic limit $\mathcal{U}_{\chi\chi \rightarrow \chi^\dagger\phi}$ asymptotes to a constant,

$$\mathcal{U}_\chi^S \equiv \mathcal{U}_{\chi\chi \rightarrow \chi^\dagger\phi}(0,0) = \frac{(9m_\chi^2 - m_\phi^2)(m_\chi^2 - m_\phi^2)}{4m_\chi^2(5m_\chi^2 - m_\phi^2)}. \quad (\text{A.14})$$

Physically, this is the effect discussed in section 3.3, namely that SA provides a roughly fixed kinetic energy to the final state particle which becomes large compared to the thermal kinetic energy at late times.

While eq. (A.13) is exact, it is not the most convenient form for calculation or interpretation. In practice, we usually assume that the dark matter phase space distribution is Maxwellian, i.e. that DM self-scattering remains efficient, even after DM-SM scattering decouples. In that case, we can use eqs. (3.10) and (3.11) to convert the reverse cross sections into forward ones:

$$\begin{aligned} & \frac{1}{n_\chi} \int d\Pi_k d\Pi_l f_k f_l \int d\Pi_i d\Pi_j (2\pi)^4 \delta^{(4)} \left(\sum p \right) \sum |\mathcal{M}(kl \rightarrow ij)|^2 \left(\frac{2\vec{p}_i^2}{E_i} - \frac{\vec{p}_k^2}{E_k} \right) \\ &= \frac{1}{n_\chi^{\text{eq}}(T_\chi)} \int d\Pi_i d\Pi_j f_i^{\text{eq}} f_j^{\text{eq}} \\ & \quad \times \int d\Pi_k d\Pi_l (2\pi)^4 \delta^{(4)} \left(\sum p \right) \sum |\mathcal{M}(ij \rightarrow kl)|^2 \left(\frac{2\vec{p}_i^2}{E_i} - \frac{\vec{p}_k^2}{E_k} \right) e^{-E_k \Delta_\chi / m_\chi}. \end{aligned} \quad (\text{A.15})$$

If we further make the non-relativistic approximation that the χ^\dagger energy and momenta in the centre-of-mass frame and cosmological frames are equal, then we can use the functions \mathcal{S} and $\mathcal{S}_\mathcal{T}$ defined in eqs. (3.12) and (3.14) to straightforwardly derive eq. (3.15).

For models that include dark partners, as discussed in section 3.2 we restrict ourselves to models where we can assume $T_\Psi = T$ during relevant eras. The contribution of SA to the various Boltzmann equations is then simple, as the reverse process can be written in terms of the forward process at equilibrium in the usual manner:

$$f_\Psi(p_\Psi) f_l(p_{\text{SM}}) \dots = \frac{n_\Psi}{n_\Psi^{\text{eq}}} f_i^{\text{eq}} f_j^{\text{eq}}, \quad (\text{A.16})$$

which implies eqs. (3.18) and (3.20). The dark partner decay contribution in general requires using the inverse process again,

$$\begin{aligned} \frac{dY_\chi}{dx} &\supset \frac{\Gamma_\Psi}{xHZ} Y_\Psi \left\langle \frac{m_\Psi}{E} \right\rangle_\Psi - \frac{1}{xsHZ} \int d\Pi_i d\Pi_j \dots f_i f_j \dots \frac{\pi}{2} \delta(E_{cm}^2 - m_\Psi^2) \sum |\mathcal{M}(ij \dots \rightarrow \Psi)|^2 \\ &= \frac{\Gamma_\Psi}{xHZ} Y_\Psi \left\langle \frac{m_\Psi}{E} \right\rangle_\Psi - \frac{s}{xHZ} Y_\chi Y_{SM} \langle \sigma v(\chi + SM \rightarrow \Psi) \rangle_{T_\chi, T}. \end{aligned}$$

where the average in the first term is over the Ψ phase space function and is the effect of time dilation. The thermal average of the $n \rightarrow 1$ inverse decay cross section is, for two-body decays, directly proportional to the width. Taking Ψ to be non-relativistic implies $\langle m_\Psi/E \rangle \approx 1$, while taking f_χ to be Maxwellian allows us to define the function

$$\mathcal{D}(T, T_\chi) = \frac{n_\chi^{\text{eq}}(T)}{n_\chi^{\text{eq}}(T_\chi)} \frac{1}{2m_\Psi \Gamma_\Psi} \int d\Pi_i d\Pi_j \dots \sum |\mathcal{M}(ij \dots \rightarrow \Psi)|^2 e^{-E_\chi \Delta_\chi / m_\chi}, \quad (\text{A.17})$$

from which eq. (3.19) follows.

To describe the effect of Ψ decay on y_χ we introduce the dimensionless parameter

$$\mathcal{U}_\chi^D = \frac{1}{2m_\Psi \Gamma_\Psi} \int d\Pi_i d\Pi_j \dots \sum |\mathcal{M}(ij \dots \rightarrow \Psi)|^2 \frac{p_\chi^2}{m_\chi E_\chi}, \quad (\text{A.18})$$

which is the mean value of the DM Lorentz boost times velocity, in the parent rest frame. Additionally we define the function

$$\mathcal{D}_\mathcal{T}(T, T_\chi) = \frac{n_\chi^{\text{eq}}(T)}{n_\chi^{\text{eq}}(T_\chi)} \frac{1}{\gamma \bar{v}_\chi} \frac{1}{2m_\Psi \Gamma_\Psi} \int d\Pi_i d\Pi_j \dots \sum |\mathcal{M}(ij \dots \rightarrow \Psi)|^2 \frac{p_\chi^2}{m_\chi E_\chi} e^{-E_\chi \Delta_\chi / m_\chi}. \quad (\text{A.19})$$

Together with our usual assumptions, these allow us to write the forward decay contribution as

$$C_2^{\text{dec}} \supset \frac{1}{3n_\chi T_\chi} \int d\Pi_\Psi f_\Psi \int d\Pi_i d\Pi_j \dots \sum |\mathcal{M}(ij \dots \rightarrow \Psi)|^2 \frac{p_\chi^2}{m_\chi E_\chi} \approx \mathcal{U}_\chi^D \frac{\Gamma_\Psi}{3T_\chi} \frac{n_\Psi}{n_\chi}, \quad (\text{A.20})$$

and the reverse as

$$\begin{aligned} C_2^{\text{dec}} &\supset -\frac{1}{3n_\chi T_\chi} \int d\Pi_\Psi \int d\Pi_i d\Pi_j \dots f_i f_j \dots \sum |\mathcal{M}(ij \dots \rightarrow \Psi)|^2 \frac{p_\chi^2}{m_\chi E_\chi} \\ &= -\frac{1}{3n_\chi^{\text{eq}}(T_\chi) T_\chi} \int d\Pi_\Psi f_\Psi^{\text{eq}} \int d\Pi_i d\Pi_j \dots \sum |\mathcal{M}(ij \dots \rightarrow \Psi)|^2 \frac{p_\chi^2}{m_\chi E_\chi} e^{-E_\chi \Delta_\chi / m_\chi} \\ &\approx -\mathcal{U}_\chi^D \mathcal{D}_\mathcal{T}(T, T_\chi) \frac{\Gamma_\Psi}{3T_\chi} \frac{n_\Psi^{\text{eq}}}{n_\chi^{\text{eq}}}, \end{aligned} \quad (\text{A.21})$$

from which eq. (3.21) follows.

B Lepton-number model

In section 5 we defined our model, based on an *ad hoc* global \mathbb{Z}_3 symmetry and a particular flavour structure for the Yukawa couplings. While not required, there is a theoretical

Particle	Spin	$U(1)_{L_\mu-L_\tau}$	$SU(2)_L \times U(1)_Y$
χ	1/2	1/3	1_0
Ψ	1/2	1/3	1_{-1}
Φ	0	-2/3	1_0
Σ	0	-2/3	$2_{1/2}$
H	0	0	$2_{1/2}$
μ_R	1/2	1	1_{-1}
τ_R	1/2	-1	1_{-1}
L_μ	1/2	1	$2_{-1/2}$
L_τ	1/2	-1	$2_{-1/2}$
\mathcal{H}	0	1	1_0

Table 4. Particle content of the lepton number dark matter model. The top section contains the same matter as the theory of section 5; the middle section contains SM particles; and the last is (a possible choice for) the additional Higgs that breaks the new gauge symmetry.

preference that global symmetries derive either from the breaking of a gauge symmetry, or as accidental symmetries. The latter possibility is not possible in our model, as the gauge content and charges given in table 1 would allow a Yukawa coupling $\Phi \bar{\chi} \chi$, which breaks the global \mathbb{Z}_3 . Additionally, there is nothing in the model as constructed that would prevent couplings to the electron and/or tau. Couplings to the first generation would lead to a much harder positron spectrum from DM SA, while a generic flavour structure of the couplings would lead to tightly constrained contributions to FCNC operators involving electrons.

In this section we show that both these problems can be explained using a $U(1)_{L_\mu-L_\tau}$ symmetry. Additionally, certain unnecessary terms in the scalar potential (5.5) can be forbidden, and the cubic μ_Σ rendered technically natural. This symmetry is anomaly-free within the SM, and all of our new fermions are Dirac, so it can be gauged. A gauge symmetry of this form has been used to explain the structure of neutrino masses and mixings [79–83] and also has been invoked in other attempts to explain the positron excess [33, 79, 84].

The charges under the new gauge symmetry are given in table 4. In addition to the four dark sector fields considered previously, we include the charges of the relevant SM fields. We must also introduce at least one new scalar field \mathcal{H} to break the new gauge symmetry. The details of the breaking are only relevant to the DM phenomenology in two respects. First, we need \mathcal{H} to break $U(1)_{L_\mu-L_\tau} \rightarrow \mathbb{Z}_3$, which requires that \mathcal{H} have integer charge. Second, we also require $\langle \mathcal{H} \rangle \sim m_\chi$, so that the annihilation $\chi \bar{\chi} \rightarrow Z' Z'$, where Z' is the new gauge boson, is kinematically suppressed. This in turn points to breaking by SM singlets. We note that while table 4 lists only a single new Higgs, it is possible that there could be additional scalars that contribute to the breaking, as in ref. [79], provided that they all have integer charge.

The dark sector charge assignment given in table 4 is the unique one which allows the Yukawa couplings of eq. (5.4), as well as the scalar cubic $\Phi \Sigma^\dagger H$ necessary for dark partner decay. It is thus the only possibility without adding further new particles. However, it has the convenient feature that no further couplings are generated; in particular, the fact the tau multiplets have the same hypercharge but opposite $U(1)_{L_\mu-L_\tau}$ quantum numbers means the dark sector fields couple at tree-level *only* to the second generation. The scalar potential couplings μ_Φ and λ_3 are likewise generated radiatively.⁴ The accidental \mathbb{Z}_4 symmetry discussed in section 5 still exists if $\mu_\Sigma \rightarrow 0$, ensuring that radiative corrections to that coupling are proportional to it, i.e. it is technically natural.

Open Access. This article is distributed under the terms of the Creative Commons Attribution License ([CC-BY 4.0](https://creativecommons.org/licenses/by/4.0/)), which permits any use, distribution and reproduction in any medium, provided the original author(s) and source are credited.

References

- [1] F. D’Eramo and J. Thaler, *Semi-annihilation of Dark Matter*, *JHEP* **06** (2010) 109 [[arXiv:1003.5912](https://arxiv.org/abs/1003.5912)] [[INSPIRE](#)].
- [2] Ya. B. Zeldovich, A.A. Klypin, M. Yu. Khlopov and V.M. Chechetkin, *Astrophysical constraints on the mass of heavy stable neutral leptons*, *Sov. J. Nucl. Phys.* **31** (1980) 664 [[INSPIRE](#)].
- [3] Y. Cai and A. Spray, *A Systematic Effective Operator Analysis of Semi-Annihilating Dark Matter*, *JHEP* **02** (2017) 120 [[arXiv:1611.09360](https://arxiv.org/abs/1611.09360)] [[INSPIRE](#)].
- [4] J. Hisano, S. Matsumoto and M.M. Nojiri, *Explosive dark matter annihilation*, *Phys. Rev. Lett.* **92** (2004) 031303 [[hep-ph/0307216](https://arxiv.org/abs/hep-ph/0307216)] [[INSPIRE](#)].
- [5] J.L. Feng, M. Kaplinghat and H.-B. Yu, *Sommerfeld Enhancements for Thermal Relic Dark Matter*, *Phys. Rev. D* **82** (2010) 083525 [[arXiv:1005.4678](https://arxiv.org/abs/1005.4678)] [[INSPIRE](#)].
- [6] J.D. March-Russell and S.M. West, *WIMPonium and Boost Factors for Indirect Dark Matter Detection*, *Phys. Lett. B* **676** (2009) 133 [[arXiv:0812.0559](https://arxiv.org/abs/0812.0559)] [[INSPIRE](#)].
- [7] B. von Harling and K. Petraki, *Bound-state formation for thermal relic dark matter and unitarity*, *JCAP* **12** (2014) 033 [[arXiv:1407.7874](https://arxiv.org/abs/1407.7874)] [[INSPIRE](#)].
- [8] S. Biondini and M. Laine, *Re-derived overclosure bound for the inert doublet model*, *JHEP* **08** (2017) 047 [[arXiv:1706.01894](https://arxiv.org/abs/1706.01894)] [[INSPIRE](#)].
- [9] S. Biondini and M. Laine, *Thermal dark matter co-annihilating with a strongly interacting scalar*, *JHEP* **04** (2018) 072 [[arXiv:1801.05821](https://arxiv.org/abs/1801.05821)] [[INSPIRE](#)].
- [10] M. Ibe, H. Murayama and T.T. Yanagida, *Breit-Wigner Enhancement of Dark Matter Annihilation*, *Phys. Rev. D* **79** (2009) 095009 [[arXiv:0812.0072](https://arxiv.org/abs/0812.0072)] [[INSPIRE](#)].
- [11] Y. Cai and A.P. Spray, *Fermionic Semi-Annihilating Dark Matter*, *JHEP* **01** (2016) 087 [[arXiv:1509.08481](https://arxiv.org/abs/1509.08481)] [[INSPIRE](#)].
- [12] Y. Bai, J. Berger and S. Lu, *Supersymmetric Resonant Dark Matter: a Thermal Model for the AMS-02 Positron Excess*, *Phys. Rev. D* **97** (2018) 115012 [[arXiv:1706.09974](https://arxiv.org/abs/1706.09974)] [[INSPIRE](#)].

⁴ ρ_Φ can be generated from a dimension-4 operator if there is a Higgs with $U(1)_{L_\mu-L_\tau}$ charge 2.

- [13] M. Duch and B. Grzadkowski, *Resonance enhancement of dark matter interactions: the case for early kinetic decoupling and velocity dependent resonance width*, *JHEP* **09** (2017) 159 [[arXiv:1705.10777](#)] [[INSPIRE](#)].
- [14] T. Binder, T. Bringmann, M. Gustafsson and A. Hryczuk, *Early kinetic decoupling of dark matter: when the standard way of calculating the thermal relic density fails*, *Phys. Rev. D* **96** (2017) 115010 [[arXiv:1706.07433](#)] [[INSPIRE](#)].
- [15] T. Bringmann and S. Hofmann, *Thermal decoupling of WIMPs from first principles*, *JCAP* **04** (2007) 016 [*Erratum ibid.* **1603** (2016) E02] [[hep-ph/0612238](#)] [[INSPIRE](#)].
- [16] T. Bringmann, H.T. Ihle, J. Kersten and P. Walia, *Suppressing structure formation at dwarf galaxy scales and below: late kinetic decoupling as a compelling alternative to warm dark matter*, *Phys. Rev. D* **94** (2016) 103529 [[arXiv:1603.04884](#)] [[INSPIRE](#)].
- [17] M.A. Buen-Abad, R. Emami and M. Schmaltz, *Cannibal Dark Matter and Large Scale Structure*, [arXiv:1803.08062](#) [[INSPIRE](#)].
- [18] M. Heikinheimo, K. Tuominen and K. Langæble, *Hidden strongly interacting massive particles*, *Phys. Rev. D* **97** (2018) 095040 [[arXiv:1803.07518](#)] [[INSPIRE](#)].
- [19] B. Chauhan, *Sub-MeV Self Interacting Dark Matter*, *Phys. Rev. D* **97** (2018) 123017 [[arXiv:1711.02970](#)] [[INSPIRE](#)].
- [20] L. Forestell, D.E. Morrissey and K. Sigurdson, *Cosmological Bounds on Non-Abelian Dark Forces*, *Phys. Rev. D* **97** (2018) 075029 [[arXiv:1710.06447](#)] [[INSPIRE](#)].
- [21] R. Huo, M. Kaplinghat, Z. Pan and H.-B. Yu, *Signatures of Self-Interacting Dark Matter in the Matter Power Spectrum and the CMB*, *Phys. Lett. B* **783** (2018) 76 [[arXiv:1709.09717](#)] [[INSPIRE](#)].
- [22] A. Kamada, H.J. Kim, H. Kim and T. Sekiguchi, *Self-Heating Dark Matter via Semiannihilation*, *Phys. Rev. Lett.* **120** (2018) 131802 [[arXiv:1707.09238](#)] [[INSPIRE](#)].
- [23] A. Kamada, H.J. Kim and H. Kim, *Self-heating of Strongly Interacting Massive Particles*, *Phys. Rev. D* **98** (2018) 023509 [[arXiv:1805.05648](#)] [[INSPIRE](#)].
- [24] PAMELA collaboration, O. Adriani et al., *An anomalous positron abundance in cosmic rays with energies 1.5–100 GeV*, *Nature* **458** (2009) 607 [[arXiv:0810.4995](#)] [[INSPIRE](#)].
- [25] AMS collaboration, M. Aguilar et al., *First Result from the Alpha Magnetic Spectrometer on the International Space Station: Precision Measurement of the Positron Fraction in Primary Cosmic Rays of 0.5–350 GeV*, *Phys. Rev. Lett.* **110** (2013) 141102 [[INSPIRE](#)].
- [26] AMS collaboration, M. Aguilar et al., *Electron and Positron Fluxes in Primary Cosmic Rays Measured with the Alpha Magnetic Spectrometer on the International Space Station*, *Phys. Rev. Lett.* **113** (2014) 121102 [[INSPIRE](#)].
- [27] AMS collaboration, N. Zimmermann, *Dark Matter signal from $e^+/e^-/\bar{p}$ with the AMS-02 Detector on the International Space Station*, [PoS\(EPS-HEP2017\)090](#).
- [28] I.V. Moskalenko and A.W. Strong, *Production and propagation of cosmic ray positrons and electrons*, *Astrophys. J.* **493** (1998) 694 [[astro-ph/9710124](#)] [[INSPIRE](#)].
- [29] E.A. Baltz and J. Edsjo, *Positron propagation and fluxes from neutralino annihilation in the halo*, *Phys. Rev. D* **59** (1998) 023511 [[astro-ph/9808243](#)] [[INSPIRE](#)].
- [30] D. Hooper, P. Blasi and P.D. Serpico, *Pulsars as the Sources of High Energy Cosmic Ray Positrons*, *JCAP* **01** (2009) 025 [[arXiv:0810.1527](#)] [[INSPIRE](#)].
- [31] D. Malyshev, I. Cholis and J. Gelfand, *Pulsars versus Dark Matter Interpretation of ATIC/PAMELA*, *Phys. Rev. D* **80** (2009) 063005 [[arXiv:0903.1310](#)] [[INSPIRE](#)].

- [32] P.D. Serpico, *Astrophysical models for the origin of the positron ‘excess’*, *Astropart. Phys.* **39-40** (2012) 2 [[arXiv:1108.4827](#)] [[INSPIRE](#)].
- [33] X.-J. Bi, X.-G. He and Q. Yuan, *Parameters in a class of leptophilic models from PAMELA, ATIC and FERMI*, *Phys. Lett. B* **678** (2009) 168 [[arXiv:0903.0122](#)] [[INSPIRE](#)].
- [34] Q.-F. Xiang, X.-J. Bi, S.-J. Lin and P.-F. Yin, *A dark matter model that reconciles tensions between the cosmic-ray e^\pm excess and the gamma-ray and CMB constraints*, *Phys. Lett. B* **773** (2017) 448 [[arXiv:1707.09313](#)] [[INSPIRE](#)].
- [35] K.R. Dienes, J. Kumar and B. Thomas, *Dynamical Dark Matter and the positron excess in light of AMS results*, *Phys. Rev. D* **88** (2013) 103509 [[arXiv:1306.2959](#)] [[INSPIRE](#)].
- [36] X.-J. Bi, P.-F. Yin and Q. Yuan, *Status of Dark Matter Detection*, *Front. Phys. (Beijing)* **8** (2013) 794 [[arXiv:1409.4590](#)] [[INSPIRE](#)].
- [37] K. Belotsky, M. Khlopov, C. Kouvaris and M. Laletin, *Decaying Dark Atom constituents and cosmic positron excess*, *Adv. High Energy Phys.* **2014** (2014) 214258 [[arXiv:1403.1212](#)] [[INSPIRE](#)].
- [38] K. Belotsky, M. Khlopov, C. Kouvaris and M. Laletin, *High Energy Positrons and Gamma Radiation from Decaying Constituents of a two-component Dark Atom Model*, *Int. J. Mod. Phys. D* **24** (2015) 1545004 [[arXiv:1508.02881](#)] [[INSPIRE](#)].
- [39] G. Arcadi, F.S. Queiroz and C. Siqueira, *The Semi-Hooperon: Gamma-ray and anti-proton excesses in the Galactic Center*, *Phys. Lett. B* **775** (2017) 196 [[arXiv:1706.02336](#)] [[INSPIRE](#)].
- [40] X.-J. Bi, P.-F. Yin and Q. Yuan, *Breit-Wigner Enhancement Considering the Dark Matter Kinetic Decoupling*, *Phys. Rev. D* **85** (2012) 043526 [[arXiv:1106.6027](#)] [[INSPIRE](#)].
- [41] P. Ko and Y. Tang, *Galactic center γ -ray excess in hidden sector DM models with dark gauge symmetries: local Z_3 symmetry as an example*, *JCAP* **01** (2015) 023 [[arXiv:1407.5492](#)] [[INSPIRE](#)].
- [42] J. Kasahara, *Neutralino dark matter: the mass of the smallest halo and the golden region*, Ph.D. Thesis, University of Utah, Salt Lake City U.S.A. (2009).
- [43] W.-L. Guo and Y.-L. Wu, *Enhancement of Dark Matter Annihilation via Breit-Wigner Resonance*, *Phys. Rev. D* **79** (2009) 055012 [[arXiv:0901.1450](#)] [[INSPIRE](#)].
- [44] F. Kahlhoefer, K. Schmidt-Hoberg, T. Schwetz and S. Vogl, *Implications of unitarity and gauge invariance for simplified dark matter models*, *JHEP* **02** (2016) 016 [[arXiv:1510.02110](#)] [[INSPIRE](#)].
- [45] N.F. Bell, G. Busoni and I.W. Sanderson, *Self-consistent Dark Matter Simplified Models with an s -channel scalar mediator*, *JCAP* **03** (2017) 015 [[arXiv:1612.03475](#)] [[INSPIRE](#)].
- [46] N.F. Bell, Y. Cai and R.K. Leane, *Impact of mass generation for spin-1 mediator simplified models*, *JCAP* **01** (2017) 039 [[arXiv:1610.03063](#)] [[INSPIRE](#)].
- [47] D. Goncalves, P.A.N. Machado and J.M. No, *Simplified Models for Dark Matter Face their Consistent Completions*, *Phys. Rev. D* **95** (2017) 055027 [[arXiv:1611.04593](#)] [[INSPIRE](#)].
- [48] A. Alloul, N.D. Christensen, C. Degrande, C. Duhr and B. Fuks, *FeynRules 2.0 — A complete toolbox for tree-level phenomenology*, *Comput. Phys. Commun.* **185** (2014) 2250 [[arXiv:1310.1921](#)] [[INSPIRE](#)].
- [49] J. Alwall et al., *The automated computation of tree-level and next-to-leading order differential cross sections and their matching to parton shower simulations*, *JHEP* **07** (2014) 079 [[arXiv:1405.0301](#)] [[INSPIRE](#)].

- [50] T. Sjöstrand et al., *An Introduction to PYTHIA 8.2*, *Comput. Phys. Commun.* **191** (2015) 159 [[arXiv:1410.3012](#)] [[INSPIRE](#)].
- [51] P. Ciafaloni, D. Comelli, A. Riotto, F. Sala, A. Strumia and A. Urbano, *Weak Corrections are Relevant for Dark Matter Indirect Detection*, *JCAP* **03** (2011) 019 [[arXiv:1009.0224](#)] [[INSPIRE](#)].
- [52] M. Cirelli et al., *PPPC 4 DM ID: A Poor Particle Physicist Cookbook for Dark Matter Indirect Detection*, *JCAP* **03** (2011) 051 [Erratum *ibid.* **1210** (2012) E01] [[arXiv:1012.4515](#)] [[INSPIRE](#)].
- [53] T. Delahaye, R. Lineros, F. Donato, N. Fornengo and P. Salati, *Positrons from dark matter annihilation in the galactic halo: Theoretical uncertainties*, *Phys. Rev. D* **77** (2008) 063527 [[arXiv:0712.2312](#)] [[INSPIRE](#)].
- [54] F. Donato, N. Fornengo, D. Maurin and P. Salati, *Antiprotons in cosmic rays from neutralino annihilation*, *Phys. Rev. D* **69** (2004) 063501 [[astro-ph/0306207](#)] [[INSPIRE](#)].
- [55] J. Buch, M. Cirelli, G. Giesen and M. Taoso, *PPPC 4 DM secondary: A Poor Particle Physicist Cookbook for secondary radiation from Dark Matter*, *JCAP* **09** (2015) 037 [[arXiv:1505.01049](#)] [[INSPIRE](#)].
- [56] T. Delahaye et al., *Galactic secondary positron flux at the Earth*, *Astron. Astrophys.* **501** (2009) 821 [[arXiv:0809.5268](#)] [[INSPIRE](#)].
- [57] M. Cirelli, R. Franceschini and A. Strumia, *Minimal Dark Matter predictions for galactic positrons, anti-protons, photons*, *Nucl. Phys. B* **800** (2008) 204 [[arXiv:0802.3378](#)] [[INSPIRE](#)].
- [58] G. Bélanger, F. Boudjema, A. Pukhov and A. Semenov, *MicrOMEGAs4.1: two dark matter candidates*, *Comput. Phys. Commun.* **192** (2015) 322 [[arXiv:1407.6129](#)] [[INSPIRE](#)].
- [59] A. Natarajan, *A closer look at CMB constraints on WIMP dark matter*, *Phys. Rev. D* **85** (2012) 083517 [[arXiv:1201.3939](#)] [[INSPIRE](#)].
- [60] N. Padmanabhan and D.P. Finkbeiner, *Detecting dark matter annihilation with CMB polarization: Signatures and experimental prospects*, *Phys. Rev. D* **72** (2005) 023508 [[astro-ph/0503486](#)] [[INSPIRE](#)].
- [61] M. Kawasaki, K. Nakayama and T. Sekiguchi, *CMB Constraint on Dark Matter Annihilation after Planck 2015*, *Phys. Lett. B* **756** (2016) 212 [[arXiv:1512.08015](#)] [[INSPIRE](#)].
- [62] PLANCK collaboration, N. Aghanim et al., *Planck 2015 results. XI. CMB power spectra, likelihoods and robustness of parameters*, *Astron. Astrophys.* **594** (2016) A11 [[arXiv:1507.02704](#)] [[INSPIRE](#)].
- [63] M. Kawasaki, K. Kohri and T. Moroi, *Big-Bang nucleosynthesis and hadronic decay of long-lived massive particles*, *Phys. Rev. D* **71** (2005) 083502 [[astro-ph/0408426](#)] [[INSPIRE](#)].
- [64] J. Hisano, M. Kawasaki, K. Kohri, T. Moroi, K. Nakayama and T. Sekiguchi, *Cosmological constraints on dark matter models with velocity-dependent annihilation cross section*, *Phys. Rev. D* **83** (2011) 123511 [[arXiv:1102.4658](#)] [[INSPIRE](#)].
- [65] H.E.S.S. collaboration, H. Abdallah et al., *Search for dark matter annihilations towards the inner Galactic halo from 10 years of observations with H.E.S.S.*, *Phys. Rev. Lett.* **117** (2016) 111301 [[arXiv:1607.08142](#)] [[INSPIRE](#)].
- [66] H.E.S.S. collaboration, A. Abramowski et al., *Constraints on an Annihilation Signal from a Core of Constant Dark Matter Density around the Milky Way Center with H.E.S.S.*, *Phys. Rev. Lett.* **114** (2015) 081301 [[arXiv:1502.03244](#)] [[INSPIRE](#)].

- [67] H. Silverwood, C. Weniger, P. Scott and G. Bertone, *A realistic assessment of the CTA sensitivity to dark matter annihilation*, *JCAP* **03** (2015) 055 [[arXiv:1408.4131](#)] [[INSPIRE](#)].
- [68] J. Herrero-Garcia, E. Molinaro and M.A. Schmidt, *Dark matter direct detection of a fermionic singlet at one loop*, *Eur. Phys. J. C* **78** (2018) 471 [[arXiv:1803.05660](#)] [[INSPIRE](#)].
- [69] A. Ibarra and S. Wild, *Dirac dark matter with a charged mediator: a comprehensive one-loop analysis of the direct detection phenomenology*, *JCAP* **05** (2015) 047 [[arXiv:1503.03382](#)] [[INSPIRE](#)].
- [70] R.H. Helm, *Inelastic and Elastic Scattering of 187-Mev Electrons from Selected Even-Even Nuclei*, *Phys. Rev.* **104** (1956) 1466 [[INSPIRE](#)].
- [71] Z. Liu, Y. Su, Y.-L. Sming Tsai, B. Yu and Q. Yuan, *A combined analysis of PandaX, LUX and XENON1T experiments within the framework of dark matter effective theory*, *JHEP* **11** (2017) 024 [[arXiv:1708.04630](#)] [[INSPIRE](#)].
- [72] XENON collaboration, E. Aprile et al., *First Dark Matter Search Results from the XENON1T Experiment*, *Phys. Rev. Lett.* **119** (2017) 181301 [[arXiv:1705.06655](#)] [[INSPIRE](#)].
- [73] DARWIN collaboration, J. Aalbers et al., *DARWIN: towards the ultimate dark matter detector*, *JCAP* **11** (2016) 017 [[arXiv:1606.07001](#)] [[INSPIRE](#)].
- [74] CMS collaboration, *Search for selectrons and smuons at $\sqrt{s} = 13$ TeV*, [CMS-PAS-SUS-17-009](#) (2017).
- [75] ATLAS collaboration, *Search for direct production of charginos, neutralinos and sleptons in final states with two leptons and missing transverse momentum in pp collisions at $\sqrt{s} = 8$ TeV with the ATLAS detector*, *JHEP* **05** (2014) 071 [[arXiv:1403.5294](#)] [[INSPIRE](#)].
- [76] M. Raidal et al., *Flavour physics of leptons and dipole moments*, *Eur. Phys. J. C* **57** (2008) 13 [[arXiv:0801.1826](#)] [[INSPIRE](#)].
- [77] PARTICLE DATA GROUP collaboration, C. Patrignani et al., *Review of Particle Physics*, *Chin. Phys. C* **40** (2016) 100001 [[INSPIRE](#)].
- [78] E.W. Kolb and M.S. Turner, *The Early Universe*, *Front. Phys.* **69** (1990) 1 [[INSPIRE](#)].
- [79] S. Patra, S. Rao, N. Sahoo and N. Sahu, *Gauged $U(1)_{L_\mu-L_\tau}$ model in light of muon $g - 2$ anomaly, neutrino mass and dark matter phenomenology*, *Nucl. Phys. B* **917** (2017) 317 [[arXiv:1607.04046](#)] [[INSPIRE](#)].
- [80] H. Banerjee, P. Byakti and S. Roy, *Supersymmetric Gauged $U(1)_{L_\mu-L_\tau}$ Model for Neutrinos and Muon ($g - 2$) Anomaly*, [arXiv:1805.04415](#) [[INSPIRE](#)].
- [81] T. Nomura and H. Okada, *Neutrino mass generation with large $SU(2)_L$ multiplets under local $U(1)_{L_\mu-L_\tau}$ symmetry*, *Phys. Lett. B* **783** (2018) 381 [[arXiv:1805.03942](#)] [[INSPIRE](#)].
- [82] Z.-z. Xing and Z.-h. Zhao, *A review of $\mu - \tau$ flavor symmetry in neutrino physics*, *Rept. Prog. Phys.* **79** (2016) 076201 [[arXiv:1512.04207](#)] [[INSPIRE](#)].
- [83] S. Baek, N.G. Deshpande, X.G. He and P. Ko, *Muon anomalous $g-2$ and gauged $L(\text{muon})-L(\text{tau})$ models*, *Phys. Rev. D* **64** (2001) 055006 [[hep-ph/0104141](#)] [[INSPIRE](#)].
- [84] S. Baek and P. Ko, *Phenomenology of $U(1)_{L_\mu-L_\tau}$ charged dark matter at PAMELA and colliders*, *JCAP* **10** (2009) 011 [[arXiv:0811.1646](#)] [[INSPIRE](#)].