

University of Nebraska - Lincoln

DigitalCommons@University of Nebraska - Lincoln

Conservation and Survey Division

Natural Resources, School of

1985

Concentration of Nitrate-Nitrogen in Groundwater Central Platte Region, Nebraska 1984

M. E. Exner

Follow this and additional works at: <https://digitalcommons.unl.edu/conservationsurvey>



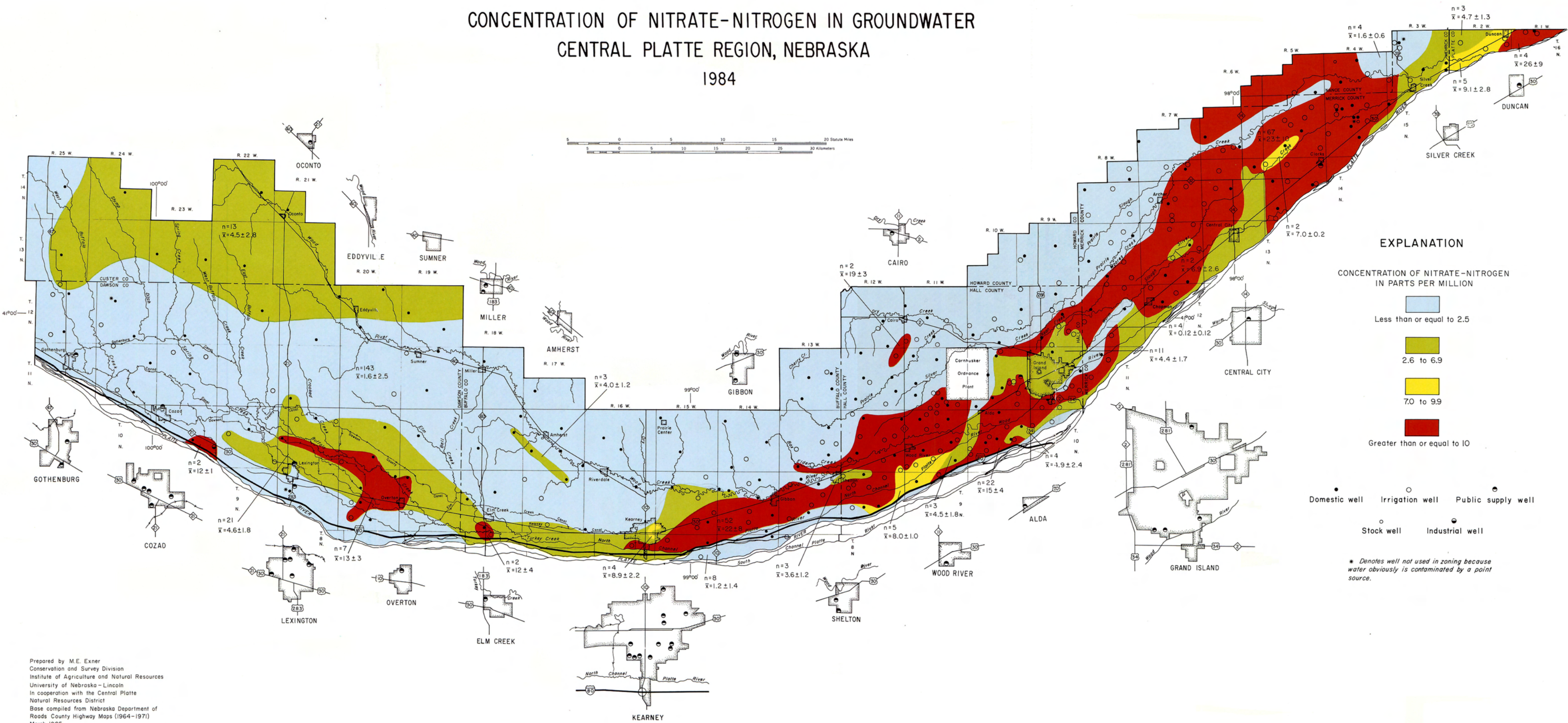
Part of the [Geology Commons](#), [Geomorphology Commons](#), [Hydrology Commons](#), [Paleontology Commons](#), [Sedimentology Commons](#), [Soil Science Commons](#), and the [Stratigraphy Commons](#)

Exner, M. E., "Concentration of Nitrate-Nitrogen in Groundwater Central Platte Region, Nebraska 1984" (1985). *Conservation and Survey Division*. 716.

<https://digitalcommons.unl.edu/conservationsurvey/716>

This Article is brought to you for free and open access by the Natural Resources, School of at DigitalCommons@University of Nebraska - Lincoln. It has been accepted for inclusion in Conservation and Survey Division by an authorized administrator of DigitalCommons@University of Nebraska - Lincoln.

CONCENTRATION OF NITRATE-NITROGEN IN GROUNDWATER CENTRAL PLATTE REGION, NEBRASKA 1984



Prepared by M.E. Exner
Conservation and Survey Division
Institute of Agriculture and Natural Resources
University of Nebraska - Lincoln
In cooperation with the Central Platte
Natural Resources District
Base compiled from Nebraska Department of
Roads County Highway Maps (1964-1971)
March 1985