

RESEARCH ARTICLE

# *Anisakis* sensitization in different population groups and public health impact: A systematic review

Walter Mazzucco<sup>1</sup>, Daniele Domenico Raia<sup>1</sup>, Claudia Marotta<sup>1\*</sup>, Antonella Costa<sup>2</sup>, Vincenzo Ferrantelli<sup>2</sup>, Francesco Vitale<sup>1</sup>, Alessandra Casuccio<sup>1</sup>

**1** Department of Science for Health Promotion and Mother to Child Care "G. D'Alessandro", University of Palermo, Palermo, Italy, **2** National Reference Center for Anisakiasis (C.Re.N.A.), Istituto Zooprofilattico Sperimentale della Sicilia "A. Mirri", Palermo, Italy

\* [claudia.marotta@unipa.it](mailto:claudia.marotta@unipa.it)



## Abstract

*Anisakis simplex* spp. sensitization rates have increased worldwide, with a significant impact on health-care systems. To date, no clear-cut diagnostic criteria and laboratory algorithm have been established, so anisakiasis still represents an under-reported health problem whose clinical manifestations, when present, mimic the much more common allergic and digestive disorders. Aim of the study was to systematically review the available literature on the prevalence of sensitization against *Anisakis* in the general population and in specific population groups, taking into account the impact of the different available diagnostic techniques on the epidemiological data. Following the Preferred Reporting Items for Systematic Reviews and Meta-Analyses (PRISMA) statement, relevant papers reporting *Anisakis* sensitization epidemiological data were found covering a period ranging from 1996 to February 2017. Overall, 41 studies comprising 31,701 participants from eleven countries were included in the qualitative synthesis. General asymptomatic population resulted sensitized to *Anisakis* in 0.4 to 27.4% of cases detected by means of indirect ELISA or ImmunoCAP specific IgE detection, and between 6.6% and 19.6% of the samples by Skin prick test (SPT). Occupationally exposed workers (fishermen, fishmongers and workers of fish-processing industries) documented specific IgE between 11.7% and 50% of cases, whereas SPT positivity ranged between 8% and 46.4%. Symptomatic allergic patients to any kind of allergen were found to be positive to *Anisakis* specific IgE detection between 0.0% (in children with mastocytosis) to 81.3% (among adults with shellfish allergy). Results highlighted that hypersensitivity prevalence estimates varied widely according to geographical area, characteristics of the population studied, diagnostic criteria and laboratory assays. Further studies are needed to overcome the documented misdiagnosis by improving the diagnostic approach and, consequently, providing more affordable estimates in order to address public health interventions on populations at high risk of exposure to *Anisakis* and to tailor health services related to specific groups.

## OPEN ACCESS

**Citation:** Mazzucco W, Raia DD, Marotta C, Costa A, Ferrantelli V, Vitale F, et al. (2018) *Anisakis* sensitization in different population groups and public health impact: A systematic review. PLoS ONE 13(9): e0203671. <https://doi.org/10.1371/journal.pone.0203671>

**Editor:** Arianna Di Napoli, Università degli Studi di Roma La Sapienza, ITALY

**Received:** November 29, 2017

**Accepted:** August 25, 2018

**Published:** September 20, 2018

**Copyright:** © 2018 Mazzucco et al. This is an open access article distributed under the terms of the [Creative Commons Attribution License](https://creativecommons.org/licenses/by/4.0/), which permits unrestricted use, distribution, and reproduction in any medium, provided the original author and source are credited.

**Data Availability Statement:** Since the study reported in the manuscript is a Systematic Review (SR), only data already published, without any ethical or legal restriction, have been presented. The final database with the results of the SR is available in the Supporting Information files.

**Funding:** No funding received.

**Competing interests:** The authors have declared that no competing interests exist.

**Abbreviations:** PRISMA, Preferred Reporting Items for Systematic Reviews and Meta-Analyses; AS, *Anisakis*; ELISA, enzyme-linked immunosorbant assay; MeSH, Medical Subject Headings; SPT, Skin prick test; RAST, Radio-Allergo-Sorbent Test; OD, optical density; BAT, Basophil activation test; EG, eosinophilic gastroenteritis; CE, crude extracts; ES, excretory-secretory; GALT, Gut Associated Lymphoid Tissue.

## Introduction

During the last decades, progress in the food industry and globalization have markedly increased the exposure to new allergenic sources that not always are adequately pointed out [1]. Coupled with changes in eating habits, including widespread consumption of raw, marinated or smoked fish, a quota of food allergies of unknown origin in the general population may be due to sensitization to *Anisakis* spp., representing a public health issue of growing importance [2,3]. Moreover, occupational contact was associated with *Anisakis* sensitization and allergic symptoms among fish-processing workers and fishmongers [4,5].

Humans can become accidental non-permissive hosts of the *Anisakis* parasite by eating parasitized raw or undercooked fish containing larvae in stage 3 [6,7]. Within hours after being ingested, *Anisakis* larvae penetrate the mucosal layers of the gastrointestinal tract, causing direct tissue damage that may lead to the zoonotic disease known as anisakiasis. This acute gastrointestinal form of *Anisakis* infection is usually transient, with the worm dying within a few weeks. It is manifested by clinical symptoms ranging from nausea, vomiting, diarrhoea, mild to severe abdominal pain and intestinal obstruction [8], mimicking other much more common gastrointestinal disturbances, such as acute appendicitis, gastric ulcer, or tumours, thus making diagnosis of anisakiasis extremely difficult.

Moreover, *Anisakis* is implicated in allergic IgE-mediated reactions, occurring after secondary exposure to the parasite, such as urticaria, angioedema, asthma and, rarely, anaphylaxis in highly sensitized people [2, 9–12]. Not by chance, in the past, allergic reactions to *Anisakis* have been mistaken for other entities such as acute urticaria or fish allergy [13]. Of interest, high levels of specific IgE for *Anisakis* allergens were also detected in healthy individuals without any clinical symptom.

The current diagnostic algorithm of *Anisakis*-related allergy has been based upon suggestive anamnesis (appearance of symptoms few hours after raw fish intake) along with positive skin prick testing, enzyme-linked immunosorbant assay (ELISA), ImmunoCAP or immunoblotting determination of antigen-specific IgE and exclusion of fish allergy, but the high number of false positives due to cross-reactivities with numerous panallergens has underlined the need to improve the diagnostic approach [14–17].

Often, these misdiagnosis lead to a domino cascade of useless diagnostic tests with significant healthcare costs [18].

The significant impact of *Anisakis* sensitization in the general population and in specific occupational settings (mainly allergic patients and fishing industry workers) has been stressed by several studies, particularly the ones with the largest sample size, held in Japan, Spain and Italy, documenting how *Anisakis* was a leading cause of food allergies more frequently than seafood itself [4,19–21]. Furthermore, sensitization to *Anisakis* was correlated not only with ingestion of contaminated fish, but also among workers whose occupation consisted of frequent handling of raw fish or fishmeal [4], also including cooks and restaurant workers [22–25].

The accurate assessment of *Anisakis* hypersensitivity prevalence plays a pivotal role to tailor health services and public initiatives according to the needs of the population, particularly in order to plan disease surveillance, ensure sufficient resources to cope with the burden of disease and evaluate trends over time [6]. Also, differences in diagnostic techniques and characteristics of populations enrolled led to conflicting reports among various geographical areas [8].

We performed a systematic review of the available literature on *Anisakis* sensitization prevalence in general population and other population strata, including occupationally exposed

workers, taking into account the impact of the different available diagnostic techniques on the epidemiological data.

## Material and methods

### Search strategy

The Preferred Reporting Items for Systematic Reviews and Meta-Analyses (PRISMA)

Guidelines [26] were followed to conduct the systematic review of the literature (S1 Table). Ethics board review was not sought because this review used only publically available information.

**Database search.** A systematic review of peer-reviewed English-language literature for *Anisakis* spp. sensitization prevalence data was conducted through a search of Medline and Scopus databases. Initially, free text words representing broad concept of “*Anisakis* allergy” were used to identify the keywords (for example, Medical Subject Headings, MeSH) for subject searching. Then, a combination of MeSH terms and free text words were arranged in the following research string with OR and AND logical operators: *Anisakis* AND (prevalence OR epidemiology) AND (allergy OR hypersensitivity OR immunization OR sensitivity OR sensitization OR ELISA OR skin prick test OR ImmunoCAP OR Immunoblot OR diagnostic techniques). Reference lists of the articles included in the analysis and of others relevant to the topic were hand-searched to identify additional potentially relevant publications, until no new information was found.

**Other sources.** Grey literature was identified by searching for conference or meeting abstracts and proceedings. The literature was last searched on February the 6<sup>th</sup> 2017.

**Inclusion and exclusion criteria.** All articles meeting the following criteria were screened and then assessed for eligibility: peer reviewed manuscripts, published from 1996 to February 2017, reporting *Anisakis* sensitization prevalence estimates, a description of the population involved, the techniques used to test for immunization and the number of people tested.

Reports of analytical studies (cross-sectional studies, prospective or retrospective) were included, with no restriction on age or type of population. Review articles, conference abstracts, editorials and case reports were excluded.

**Screening.** After removal of duplicates, the records were screened by two reviewers (CM and DDR) in three levels. The first level included title screening, the second level included abstract screening and the third level included full text screening. For each level, the reviewers separately screened the records. Any disagreement was resolved by consensus with a third author (WM). After screening, studies were assessed for eligibility and final selection.

### Study quality assessment process

Quality assessment of thirty-seven studies included was performed by using an adapted version of the Joanna Briggs Institute Prevalence Critical Appraisal Tool [27], which was tailored to the objective and primary outcome measures of this review by modifying in order to account for specific *Anisakis* sensitization test criteria. Each study was assessed for ten criteria (Table 1): sample representativeness; participants recruitment; sample size; description of participants and setting; response rate; objective, reliable measurement of *Anisakis* sensitization; reliability of diagnostic techniques; appropriateness of statistical analysis, confounding factors/subgroups/differences identified and accounted for; identification of subpopulations using objective criteria (S2 Table). Being the maximum score obtainable equal to 14, a score of 7 was considered as cut off between middle-low and middle-high study quality.

When only the abstract was available, quality assessment could not be performed.

**Table 1. Criteria for the quality assessment of the studies (adapted from Joanna Briggs Institute Prevalence Critical Appraisal Tool).**

Criteria	Score (Maximum score = 14)
1. Sample representativeness	Adequate = 1, Not Adequate = 0, NA
2. Participants recruitment	Random = 1, all other methods = 0, NA
3. Sample size	≥200 = 1, <200 = 0, NA
4. Description of participants and setting	Adequate = 1, Not Adequate = 0, NA
5. Response rate, %	<50% = 0, 50–80% = 1, >80% = 2
6. Objective, reliable measurement of <i>Anisakis</i> sensitization	3 diagnostic criteria (anamnestic, clinical, laboratoristic) = 3; only 2 up to 3 criteria = 2; only one criteria = 1
7. Reliability of diagnostic techniques	Antigens used specified in the text = 2; only anamnesis = 0, all the other measurement = 1
8. Appropriateness of statistical analysis	Adequate = 1, Not Adequate = 0, NA
9. Confounding factors/subgroups/differences identified and accounted for	Adequate = 1, Not Adequate = 0, NA
10. Identification of subpopulations using objective criteria	Adequate = 1, Not Adequate = 0, NA

<https://doi.org/10.1371/journal.pone.0203671.t001>

### Data extraction

Data were extracted using a data extraction MS Excel sheet. Data extraction included authors, year of publication, year of study, study location, study design, statistical measures, study settings, samples size, the characteristics of the studies’ participants, as age and females/males ratio, as well as diagnostic techniques and criteria employed to define *Anisakis* sensitization and allergy and relative prevalence estimates. DDR conducted data extraction, while CM performed the analysis of the studies’ quality.

### Study protocol

The study protocol has been registered with PROSPERO, number CRD42017057316.

A total of 248 records were identified searching in Medline and Scopus databases.

After title screening, 217 records were excluded. Of the remaining 31 manuscripts, 8 were removed subsequently to abstract evaluation. In the latest phase, full text assessment led to inclusion of all the remaining 23 manuscripts, and 18 more articles fulfilling the inclusion criteria found in the reference lists were added (**Fig 1**) (**S1 Database**).

### Diagnostic techniques employed

**Skin prick test (SPT).** Sensitization to *Anisakis* is ruled out by the appearance of a >3 mm diameter wheal on the volar aspect of each subject’s forearm after scratching the skin in the presence of a dilution of *Anisakis* extract (obtained by the centrifugation of total larvae in phosphate-buffered saline for 15 minutes at 1500 g) [28, 29].

**ImmunoCAP, UniCAP-100, Radio-Allergo-Sorbent Test (RAST).** Total immunoglobulins (Igs), IgE, IgM, IgA1, IgG1, IgG4, antibodies against *Anisakis* crude extract, excretory-secretory antigens and recombinant antigens Ani s1, Ani s3, Ani s5, Ani s9, and Ani s10 are first detected by incubation with subjects’ serum samples and then revealed using an anti-human Igs labelled with radioactive or fluorescent marker [11, 30–33].

**Indirect ELISA.** Specific anti-Ani s1 and Ani s7 IgE antibodies are detected in patients’ sera after adding diluted *Anisakis* antigens to ELISA plates, and then incubating with secondary antibodies coupled to an enzyme. After washing, so that excess of unbound antibodies can

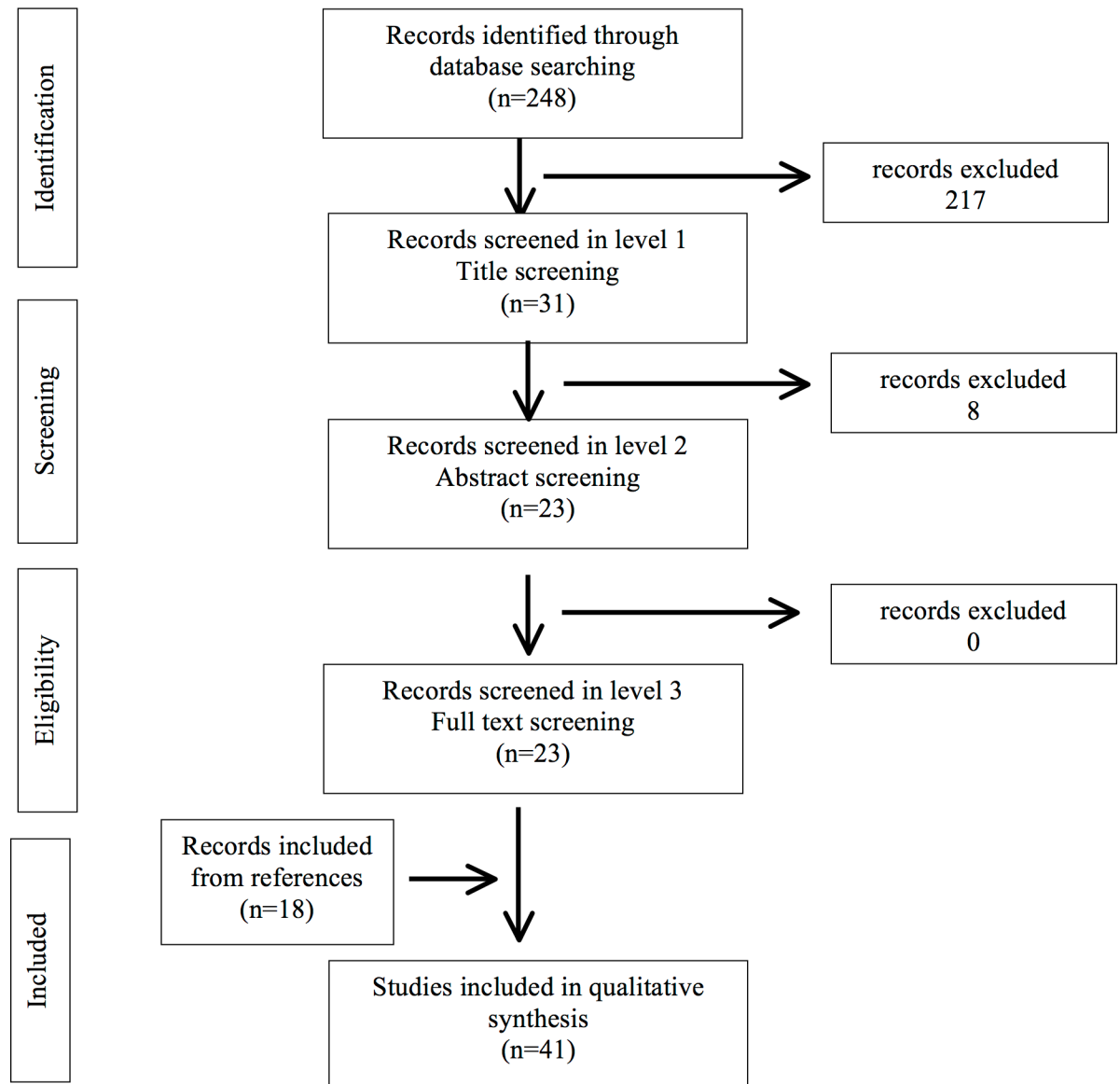


Fig 1. Flow diagram for selection of studies on *Anisakis* sensitization prevalence.

<https://doi.org/10.1371/journal.pone.0203671.g001>

be removed, a substrate is added, and remaining enzymes elicit a chromogenic or fluorescent signal, which is proportional to the antibody-antigen complexes and can be measured as optical density (OD) [34].

**Antigen capture ELISA.** It is a variation of indirect ELISA in which the serum to be tested is added to wells containing O-deglycosylated *A. simplex* antigen bound by the immobilized monoclonal antibody UA3, in order to detect specific IgG1 and IgE [35].

**rAni s1, rAni s7 ELISA.** Specific anti-*Anisakis* IgE antibodies are detected by indirect ELISA, with rAni s 7 or rAni s 1 as the target. After incubation of the plates and blocking of nonreactive sites, undiluted serum is added to each well and the specific IgE detected [36].

**Immunoblotting.** *Anisakis* specific IgE detection is performed by means of sodium dodecylsulfate-polyacrylamide gel electrophoresis with a dilution of *Anisakis* extract or recombinant Ani s1, Ani s3, Ani s5, Ani s9 and Ani s10. Proteins are afterwards transferred to

nitrocellulose membranes and incubated overnight with diluted sera from patients in incubation buffer. After washing, the membranes are incubated with appropriate dilution of monoclonal labelled antihuman immunoglobulins [19, 37].

**Basophil activation test (BAT).** Flow-cytometry expression of CD63 on activated basophils is measured on whole blood sample after incubation in a water bath with *Anisakis* crude extract. Samples are lysed, washed and re-suspended to be measured in a flow cytometer after staining cells with 20  $\mu$ L of CD63-FITC/CD123-PE/anti-HLA-DR-PerCP reagent mixture cocktail. Activated basophils were finally identified using anti-CD123, anti-HLA-DR and anti-CD63 monoclonal antibodies [38].

## Results

The characteristics of the 41 studies reviewed in the qualitative analysis are summarized in [Table 2](#).

Thirty-four studies followed a cross-sectional design, while the remaining ones ( $n = 7$ ) were designed as case-control study. Twenty-two studies were made on symptomatic allergic population and among them only one specifically enrolled children (Bernardini, 2000) [39]. Three studies included only occupationally exposed population working in the fishing industry (Purello-D'Ambrosio 2000 [40], Nieuwenhuizen N 2006 [5], Mazzucco 2012 [4]), while Abatouy 2013 [41] included both inhabitants and fish workers from two coastal cities in Morocco.

Quality scores ranged from a minimum of 5 (Kimura, 1999) [20] to a maximum of 13 (Anadon 2010 [36], Mladineo, 2014 [42]) up to 14 points scale. Thirty-eight studies were considered of medium-high quality being rated 7 or more, including five studies scoring 10 and three studies scoring 11. Four studies were excluded from quality assessment since only respective abstracts were available (Estrada Rodriguez 1997 [43], Pascual 1996 [44], Rodriguez 2000 [45], Uga 1996 [46]). Extended evaluations on each items analysed for the critical appraisal are in [S2 Table](#).

Data on prevalence, according to different study samples and the diagnostic tests applied, are shown in [Table 3](#).

Indirect ELISA, ImmunoCAP or RAST were employed in 14 studies on general asymptomatic population; 2 studies among fishing sector workers; 18 studies including symptomatic allergic patients; 5 studies on patients admitted to hospital for any reason; 6 studies on patients with digestive disorders; and 1 study on post-partum women. Two variations of indirect ELISA, that are antigen capture ELISA [47, 35] and rAni s 1, rAni s 7 ELISA [30, 36, 42], were used, respectively, in 5 studies in the general population and in allergic patients.

Immunoblotting technique was performed along with IgE detection by means of previously cited tests in 4 studies on general asymptomatic population [30, 14, 48, 49]; 4 studies on symptomatic population with allergies to any kind of allergen [14, 30, 31, 50]; 1 study on patients presenting to hospital for controls [51] and 2 studies on patients with digestive system disorders [32, 49].

General asymptomatic population was investigated for *Anisakis* sensitization through SPTs assessment in 4 studies (in 1 case it was the only diagnostic criterion employed [52]; in the remaining 3 studies, SPTs were performed along with other IgE detection techniques or CD63 BAT) [14, 38, 40].

Occupationally exposed workers were assessed for *Anisakis* sensitization by SPTs alone in 1 study [5], and by both SPTs and RAST in another one [40].

Cutaneous reactivity to *Anisakis* extract among allergic patients was also evaluated in 15 studies, including 10 studies which performed both SPTs and IgE detection through indirect ELISA, ImmunoCAP or radioimmunoassays; SPTs and Immunoblot were present in 3 studies



Table 2. Characteristics of the n. 41 studies included in the systematic review.

Author, year	Country	Study design	Study period	Study setting	Study participants	N° of participants	Age mean (SD) or median (IQR), range	Female n/N (%)
Abattouy, 2013	Morocco	Cross sectional	Not provided	Public clinical analysis laboratories and general practitioner	Inhabitants and fishing industry workers from 2 coastal cities	333	38.4 22–70	156/333 (46.8)
Anadon, 2010	Spain	Cross sectional	1995–2001	Allergy service of Madrid hospital	Serum samples of Madrid allergic inhabitants	495	44.3 5–81	322/495 (65)
Andreu-Ballester, 2008	Spain	Case-control	Not provided	1 hospital	Appendectomized patients and non appendectomized patients who presented to the emergency department	160 (80 appendectomized patients and 80 non appendectomized patients)	39.2 (14) 20–75	76/180 (47.5)
Añibarro, 2007	Spain	Cross-sectional	Not provided	1 allergy unit covering 400.000 inhabitants public health area	Food allergic patients	436	46 (13.8) (mean age onset of symptoms)	Not provided
Asero, 2009	Italy	Cross-sectional	2007	19 allergy outpatient clinics	Food allergic patients	1,110	31 12–79	719/1,110 (64.7)
Bernardini, 2000	Italy	Cross-sectional	Not provided	1 allergy unit	Children with allergic symptoms	805	7.9 (3.8) 0.52±17.61	324/805 (40.2)
Caballero, 2012	Spain	Cross-sectional	Not provided	1 allergy unit	Tolerant patients with suspected not-fish-related allergy and patients with allergy to <i>A. simplex</i> .	99 (tolerant patients with suspected not-fish-related allergy) 35 (patients with allergy to <i>A. simplex</i> )	36.2 (tolerant patients with suspected not-fish-related allergy) 52.5 (patients with allergy to <i>A. simplex</i> ).	Not provided
Consortium AAITO-IFIACI <i>Anisakis</i> , 2010	Italy	Cross-sectional	2010	34 allergy units	Suspected allergy patients	10,570	Not provided	Not provided
Daschner, 2005	Spain	Cross-sectional	Not provided	1 allergy unit	Chronic urticaria patients	135	41.5 (15.4)	91/135 (67.4)
del Pozo, 1997	Spain	Cross-sectional	Not provided	1 allergy unit	Urticaria/angioedema patients	100	37.4 18–75	63/100 (63.0)
Del Rey Moreno, 2006	Spain	Cross-sectional	2000	1 hospital laboratory	Random healthy blood donors	77	Not provided	Not provided
Estrada Rodriguez, 1997	Spain	Cross-sectional	Not provided	1 hospital laboratory	Not provided	66	Not provided	Not provided
Falcao, 2008	Portugal	Case-control	Not provided	Immuno-allergology and surgery units of the largest paediatric hospital in Porto	Cases with of acute urticaria Controls among programmed surgery patients	200 (cases with of acute urticarial). 200 (controls among programmed surgery patients). 400 overall	6–18	66/200 (33.0) for cases. 92/200 (46.0) for controls. Overall 158/400 (39.5)
Figueiredo, 2013	Brazil	Cross-sectional	2010	1 military facility	Healthy adult affiliated with a military facility	67	40 ± 8.4 years (median)	Not provided

(Continued)

Table 2. (Continued)

Author, year	Country	Study design	Study period	Study setting	Study participants	N° of participants	Age mean (SD) or median (IQR), range	Female n/N (%)
<b>Figueiredo, 2015</b>	Brazil	Cross-sectional	2009–2010	2 perinatal centers (1 high-risk birth unit and 1 low-risk birth unit)	Mother-newborn pairs	139 from LRBU 170 from HRBU 309 overall	24.80 (LRBU) 26.19 (HRBU) overall range 15–42	309/309 (100)
<b>Frezzolini, 2010</b>	Italy	Case-control	Not provided	Laboratory of immunology and allergology unit	Chronic urticaria patients, atopic patients, healthy controls	57 chronic urticaria patients, 22 atopic patients, 20 healthy controls	Chronic urticaria patients: 42 (11) 24–54 Not provided for controls	Chronic urticaria patients: 49/57 (86.0) Not provided for controls
<b>Garcia, 1997</b>	Spain	Case-control	Not provided	1 hospital	Cases: patients with urticaria, angioedema, or anaphylaxis; controls: healthy blood donors	61 cases, 51 controls	47 21–72 for cases, 41 18–65 for controls	39/61 (63.9) for cases, 22/47 (46.8) for controls
<b>García-Palacios, 1996</b>	Spain	Cross-Sectional	Not provided	1 hospital laboratory	Randomly selected adults showing no clinical suspicion of anisakidosis	1,008	Not provided	Not provided
<b>Garcia-Perez, 2015</b>	Spain	Case-control	2010–2013	1 hospital	gastric cancer patients, healthy controls	47 cases, 47 controls	70 (48–92) for cases, 65 (46–83) for controls	24/47 (51.1) for cases, 21/47 (44.7) for controls
<b>Gomez, 1998</b>	Spain	Case-control	1989–1996	1 allergy unit	Cases with eosinophilic gastroenteritis, controls without digestive disorder, controls with digestive disorder different from eosinophilic gastroenteritis	10 cases, 149 controls without digestive disorder, 10 controls with digestive disorder different from eosinophilic gastroenteritis	50 for cases, not provided for controls	4/10 (40.0) for cases, not provided for controls
<b>González de Olano, 2007</b>	Spain	Cross-sectional	2003–2005	1 Allergy unit	adults with mastocytosis, children with mastocytosis, controls	163 adults with mastocytosis, 47 children with mastocytosis, 50 controls	43 (median) (18–75) for adults with mastocytosis, 8 (median) (0.6–14) for children with mastocytosis, Range 2–70 for controls	88/163 (54.0) for adults with mastocytosis 17/47 (36.2) for children with mastocytosis, not provided for controls
<b>Gonzalez Munoz, 2005</b>	Spain	Cross-sectional	Not provided	1 Department of Immunology	consecutive patients divided into <i>Anisakis</i> sensitized (symptoms + IgE+), chronic urticaria/abdominal pain unrelated to fish ingestion	88 overall (37 <i>Anisakis</i> sensitized, 51 with chronic urticaria/abdominal pain unrelated to fish ingestion)	median 34 (IQR = 28–48)	60/88 (68.2)

(Continued)



Table 2. (Continued)

Author, year	Country	Study design	Study period	Study setting	Study participants	N° of participants	Age mean (SD) or median (IQR), range	Female n/N (%)
Guillén-Bueno, 1999	Spain	Cross-sectional	Not provided	1 hospital (gastroenterology Service)	Crohn's disease patients, random controls	73 cases, 251 controls	35.1 (12.2) 15–73	42/73 (57.5)
Gutierrez, 2002	Spain	Cross-sectional	1996–1997	1 hospital (gastroenterology Service)	Gastrointestinal diseases patients, patients with digestive haemorrhaging, patients with Crohn's disease, patients with digestive cancer, patients with appendicitis.	57 gastrointestinal diseases patients, 19 patients with digestive haemorrhaging, 30 patients with Crohn's disease, 4 patients with digestive cancer 5 patients with appendicitis.	42.4 (17.6) gastrointestinal diseases patients, 54.3 (15.9) patients with digestive haemorrhaging, 37.2 (11.5) patients with Crohn's disease, 71.3 (5.7) patients with digestive cancer, 24.8 (4.7) patients with appendicitis.	Not provided
Heffler, 2016	Italy	Cross-sectional	2010–2012	1 Allergy unit	Consecutive allergic patients	3,419	34.3 3–88	2,114/3,419 (61.8)
Kim, 2011	South Korea	Cross-sectional	Not provided	3 hospitals laboratories	Non allergic patients admitted for health examinations	498	from teens to 98	269/498 (54.0)
Kimura, 1999	Japan	Cross-sectional	1994–1997	Various laboratories throughout Japan	Allergic patients	2,108	Not provided	Not provided
Lin, 2012	Norway	Cross-sectional	Not provided	1 university hospital, allergy laboratory	blood donors, suspected allergy patients	100 blood donors, 798 suspected allergy patients	Not provided	Not provided
Lin, 2014		Cross-sectional	Not provided	1 university hospital, allergy laboratory	Blood donors, patient with total IgE levels $\geq 1000$ kU/L	993 blood donors, 414 patient with total IgE levels $\geq 1000$ kU/l	Not provided	Not provided
Mazzucco, 2012	Italy	Cross-sectional	2009	1 hospital laboratory	Fishing industry workers	94	42.1 (12)	16/94 (17.0)
Mladineo, 2014	Croatia	Cross-sectional	2010–2011	1 county secondary healthcare provider Medicine-biochemical Laboratory	Unpaid randomly selected volunteer healthy subjects	500	58.1	242 (48.4)
Montoro, 1997	Spain	Cross-sectional	1995	1 hospital immunology and allergy service	Acute recidivous urticaria patients who usually eat fish or other seafood	25	39.3 (19.8) 11–77	16/25 (64.0)
Nieuwenhuizen, 2006	South Africa	Cross-sectional	Not provided	1 laboratory	Fishing industry workers	578	Not provided	Not provided
Pascual, 1996	Spain	Cross-sectional	Not provided	1 laboratory	Patients with increased levels of serum total IgE	73	Not provided	Not provided

(Continued)

Table 2. (Continued)

Author, year	Country	Study design	Study period	Study setting	Study participants	N° of participants	Age mean (SD) or median (IQR), range	Female n/N (%)
Puente, 2008	Spain	Cross-sectional	Not provided	1 laboratory	Allergic residents of Madrid, non-allergic subjects divided in patients with non-digestive non-allergic pathologies unrelated to anisakiosis and healthy residents of Madrid	86 allergic residents of Madrid, 314 non-allergic subjects divided in 50 patients with non-digestive non-allergic pathologies unrelated to anisakiosis, and 264 healthy residents of Madrid	Not provided for allergic residents of Madrid; 57.6 (20–85) for patients with non-digestive non-allergic pathologies unrelated to anisakiosis, 32.9 (18–65) for healthy residents of Madrid	Not provided
Purello-D'Ambrosio, 2000	Italy	Cross-sectional	Not provided	1 Laboratory	males in daily contact with fish, non atopic healthy males	28 males in daily contact with fish, 15 non atopic healthy males	30.6 (18–48) for males in daily contact with fish, 32.5 (20–44) for non atopic healthy males	0 (0.0%)
Rodriguez, 2000	Spain	Cross-sectional	Not provided	1 allergology clinic	Drug allergy patients	53	48.0 (16.7) 17–75	36/53 (67.9)
Toro, 2004	Spain	Cross-sectional	1998	1 hospital	Dyspeptic patients	174	49.3 (15.1) 21–80	83/173 (48.0)
Uga, 1996	Indonesia	Cross-sectional	1992–1993	1 hospital	Hospital visitors for diarrhea or routine check-ups	244	35 1–80	120/244 (49.2)
Valinas, 2001	Spain	Cross-sectional	Not provided	1 laboratory	Normal unpaid volunteer healthy blood donors	2,801	Not provided	Not provided
Ventura, 2013	Italy	Cross-sectional	Not provided	1 allergology unit	Adult allergic patients	919	17–83	622/919 (67.7)

<https://doi.org/10.1371/journal.pone.0203671.t002>

protocols; anamnesis of allergic symptoms correlated to fish consumption was considered along with SPTs in 4 studies; finally, Frezzolini et al. [38] added CD63 BAT to SPTs assessment.

Basophil activation test (BAT) was introduced by Gonzalez-Munoz et al. in 2005 [53] and later used by Frezzolini et al. [38] among allergic patients and healthy controls.

Falcao et al. assessed *Anisakis* sensitization considering the combination of both SPTs and ImmunoCAP positivity in allergic patients and in controls selected for surgery procedures [54]. Similarly, a combination of SPTs and IgE detection was performed by Gomez et al. among digestive disorders patients [55].

General asymptomatic population resulted sensitized to *Anisakis* in 0.4 to 27.4% of cases by means of indirect ELISA or ImmunoCAP specific IgE detection [14, 35], and between 6.6% and 19.6% of the samples by means of SPTs [14, 38, 40, 52]. *Anisakis* antigens recognition patterns were obtained by Immunoblotting assays in 25% [14] to 67.5% of sera from asymptomatic general population samples [48].

Occupationally exposed workers (fishermen, fishmongers and workers of fish-processing industries) had specific IgE between 11.7% [4] and 50% of cases [40], whereas SPTs positivity ranged between 8% and 46.4% [5, 40].

**Table 3. Prevalence of *Anisakis* sensitization according to different study samples and diagnostic tests.**

Author, year, (reference)	Sample characteristics	Sample size (n) age range (mean, SD)	Skin Prick Tests % (n), >3 mm threshold	ELISA/ImmunoCAP % (n), threshold	Other tests / criteria
<b>General asymptomatic population (15 studies)</b>					
Abattouy, 2013	Random samples	333	-	5.1%	-
Del Rey Moreno, 2006	Healthy blood donors	77	-	22.1% (n = 17)	Immunoblot 67.5% recognized antigens of <i>A. simplex</i>
Figueiredo, 2013	Healthy military	67	-	20.9% (n = 14)	-
Frezzolini, 2010	Healthy subjects	20	10.0%	10.0%	0.0% CD63 BAT
Garcia, 1997	Healthy blood donors	51	19.6% (n = 10)	27.4%	Immunoblot <sup>1</sup> 75.0% type 4 1.9% (n = 1) type 1 15.0% type 3
García-Palacios, 1996	Random sera	1,008	-	6.0% (n = 61)	-
Garcia-Perez, 2015	Healthy controls	47	-	6.4% IgA1, rAni s 1; 10.6% IgA1, rAni s 5	-
Guillén-Bueno, 1999	Asymptomatic adults	251	-	18.3%	Immunoblot E17, 50-70-250 kDa eosinophilia, leukocytosis
Lin, 2012	Blood donors	100	-	2.0% ImmunoCAP > 0.35 kU/L	-
Lin, 2014	Blood donors	993	-	0.4% ImmunoCAP (0.0% ELISA with rAni s 1 and rAni s 7)	Immunoblot 40–100 kDa (weaker bands)
Mladineo, 2014	Random healthy	500	-	2.0% indirect ELISA Ani s 1 s 7	-
Puente, 2008	Healthy residents	264 (18–65 years)	-	11.7% UA3 Ani s 7	-
Purello-D'Ambrosio, 2000	Healthy donors not occupationally exposed	15	6.6% (n = 1)	0.0% (n = 0) RAST	-
Valinas, 2001	Healthy blood donors	2,801	-	0.4% UA3	-
Ventura, 2013	Healthy controls	187	16.0%	-	-
<b>Occupationally exposed population, symptomatic and asymptomatic (3 studies)</b>					
Mazzucco, 2012	94 workers in fisheries sector: fishmongers (n = 21), fish industry employees (n = 35), Fishermen/sailors (n = 38)	94	-	11.7% (n = 11) UniCAP-100	-
Nieuwenhuizen, 2006	workers employed in 2 large fish-processing workplaces in the Western Cape province of South Africa	578	8.0% (n = 46)	-	-
Purello-D'Ambrosio, 2000	Fishermen/fishmongers occupationally exposed group	28	46.4% (n = 13)	RAST 50.0% (n = 14)	-
<b>Symptomatic population with allergies to any kind of allergen (24 studies)</b>					
Anadon, 2010	Food allergic; controls non food-related allergic	493 food allergic; 25 controls non food-related allergic.	-	CAP-FEIA: 52.7% (n = 195 true positive + 65 false positive) 3 false negative; ELISA rAni s 1 s 7: 40.2% (n = 198) 0 false positive 0 false negative	-
Añibarro, 2007	Food allergic	436	12.4% <sup>2</sup>	12.4% <sup>2</sup>	-

(Continued)

Table 3. (Continued)

Author, year, (reference)	Sample characteristics	Sample size (n) age range (mean, SD)	Skin Prick Tests % (n), >3 mm threshold	ELISA/ImmunoCAP % (n), threshold	Other tests / criteria
Asero, 2009	Food allergic	1,110 (12–79 years)	-	-	0.3% prevalence of systemic reactions/ anaphylaxis
Bernardini, 2000	Suspect allergy	805 (0.5–17.6 years)	6.1% (n = 49)	-	-
Caballero, 2012	<b>Sample A:</b> suspect allergy other than fish related; <b>sample B:</b> <i>Anisakis</i> allergic patients (anaphylaxis, angioedema, urticaria or gastrointestinal symptoms few hours after eating undercooked fish)	Sample A: 99; sample B: 35	Sample A: 18.0%; sample B: 100%	ImmunoCAP: sample A: 17.0%; sample B: 100%	Immunoblot rAni s 1,3,5,9,10: sample A: 15.0%; sample B: 100%
Consortium AAITO-IFIACI <i>Anisakis</i> , 2011	Suspect allergy	10,570	4.5% (n = 474)	-	Anamnesis + exclusion fish allergy: 0.6% overall; 14.0% of sensitized
Daschner, 2005	Chronic urticaria	135	48.1% (combined SPT + and IgE+)	52.6% (only IgE+) 31.8% (only IgG4)	-
Del Pozo, 1997	Urticaria/angioedema (AE) or anaphylaxis	100	14.0%	22.0% (>0.7 kU/L)	+ symptoms < 6 h after fish ingestion + exclusion other causes: 8.0% real allergy to <i>Anisakis</i>
Estrada Rodriguez, 1997	Asthmatic/urticaria	66	-	19.7% (n = 13)	-
Falcao, 2008	Relapsing acute urticaria	200	16.5%	6.0% (>0.7 kU/L IgE); 9.0% (>0.35 kU/L IgE)	Combinations SPT IgE: 2.5% (SPT and >0.7 IgE); 3.0% (SPT and >0.35 IgE); 20.0% (SPT or > 0.7 IgE); 22.5% (SPT or >0.35 IgE)
Frezzolini, 2010	Chronic urticarial, atopic patients	57 chronic urticarial; 22 atopic patients	63.0% chronic urticarial; 14.0% atopic patients	61.0% (> 0.35 kU/L) chronic urticarial; 18.0% atopic patients	CD63 BAT 67.0% combined 75% chronic urticarial; 0.0% atopic patients
Garcia, 1997	Subjects with IgE against <i>Anisakis</i> divided into: <b>allergic</b> (anamnesis, the time interval <4 hours between the ingestion of fish and the onset of the reaction, and the exclusion of other causes of allergy); <b>non allergic</b> (had not eaten any fish 12 hours before the onset of the symptoms); <b>doubtful</b> (who did not remember the previous ingestion of fish or for whom the interval between ingestion and onset of symptoms was between 4 and 12 hours)	61 overall (25 allergic; 16 non allergic; 20 doubtful)	92.0% allergic; 50.0% non allergic; 70.0% doubtful	CAP-radioimmunoassay 100% <sup>3</sup> overall; 100% <sup>3</sup> allergic; 100% <sup>3</sup> non allergic; 100% <sup>3</sup> doubtful	Immunoblot <sup>1</sup> : allergic: 80.0% type 1 pattern, 8.0% type 3; non allergic: 12.5% (n = 2) type 1, 56.3% (n = 9) type 4, 19.0% type 3; doubtful: 40.0% type 1, 35.0% type 3
Gomez, 1998	Suspected allergy	147	10.0% <sup>2</sup>	10.0% <sup>2</sup>	-
González de Olano, 2007	Mastocytosis: adults (18–65 years); children (7 months-14 years)	163 adults; 47 children	-	26.9% (n = 44) adults; 0.0% (n = 0) children	symptoms referred 13.6% (n = 6) adults; 0.0% (n = 0) children
Gonzalez Munoz, 2005	Suspect allergy subdivided into: <i>Anisakis</i> allergy; chronic urticaria or abdominal pain unrelated to fish ingestion; healthy controls	88 overall; 37 <i>Anisakis</i> allergy; 51 chronic urticaria or abdominal pain unrelated to fish ingestion; 12 healthy controls	-	42.0% (n = 37) had a clinical history of <i>A. simplex</i> allergy confirmed by IgE+	CD63 BAT <i>Anisakis</i> + vs <i>Anisakis</i> - and <i>Anisakis</i> + vs healthy controls, the cutoff for a positive basophil activation test was 21% (specificity = 96%, sensitivity = 100%), and 16% (sensitivity and specificity of 100%) respectively

(Continued)

Table 3. (Continued)

Author, year, (reference)	Sample characteristics	Sample size (n) age range (mean, SD)	Skin Prick Tests % (n), >3 mm threshold	ELISA/ImmunoCAP % (n), threshold	Other tests / criteria
Heffler, 2016	Allergic clinic outpatients	3,419	15.0%	-	0.8% + allergic symptoms after raw fish
Kimura, 1999	Urticaria or food allergy	2,108	-	29.8% (n = 629) (>0.7 kU/L IgE)	-
Lin, 2012	Serum samples from Allergy laboratory: <b>sample A</b> without any additional information on analytical results; <b>sample B</b> Phadiatop + subjects	600 sample A; 198 sample B	-	ImmunoCAP (> 0.35 kU/L); 2.2% sample A; 6.6% sample B	-
Lin, 2014	Subjects with total IgE levels $\geq 1000$ kU/L	414	-	16.2% (0.2% ELISA with rAni s 1 and rAni s 7)	Immunoblot five bands ranging between 40 and 100 kDa to <i>A. simplex</i> CE
Montoro, 1997	Patients with acute recidivous urticaria who usually eat fish or other seafood.	25	64.0% (n = 16)	76.0% (n = 19)	Immunoblot 56.0% (14 of the 25) tested sera showed the characteristic band at 49.8–80 kDa compared to the E17 reference serum. Most of the sera showed a common immunorecognition pattern with a group of bands at 200–80 kDa
Pascual, 1996	Patients with increased levels of serum total IgE divided into: shellfish allergy; fish allergy; probable parasitic disease; respiratory allergy	73 overall; 16 shellfish allergy; 20 fish allergy; 17 probable parasitic disease; 20 respiratory allergy	-	56.2% (n = 41) overall; 81.3% shellfish allergy; 40.0% fish allergy; 58.8% probable parasitic disease; 50.0% respiratory allergy	-
Puente, 2008	Allergic residents with negative skin prick test to <i>Anisakis</i>	86	0.0% <sup>3</sup>	3.5% UA3 Ani s 7	-
Rodriguez, 2000	Drug allergic patients	53	54.7% (n = 29)	-	-
Ventura, 2013	Chronic urticaria	213	49.7%	-	-
<b>Hospital presenting patients for any reason (5 studies)</b>					
Andreu-Ballester, 2008	Non appendectomized controls presenting at emergency department	80	-	1.3% IgG+; 7.5% IgM+; 3.8% IgA+; 5.0% IgE+	-
Falcao, 2008	Controls selected for programmed orthopaedic, maxillofacial, or general surgery	200 (6–18 years)	5.5%	1.5% (>0.7 kU/L IgE); 3.0% (>0.35 kU/L IgE)	Combinations SPT $\pm$ IgE: 0.5% (SPT + and >0.7 kU/L IgE); 1.5% (SPT + and >0.35 kU/L IgE); 6.5% (SPT + or >0.7 kU/L IgE); 7.0% (SPT or >0.35 kU/L IgE)
Kim 2011	Subjects presenting at hospital for routine controls	498	-	5.0% larval <i>Anisakis</i> crude extract; 6.6% excretory-secretory proteins	Immunoblot A specific protein band of 130 kDa was detected from 10 patients with western blot analysis against crude extract and excretory-secretory proteins among those who showed positive results by ELISA
Puente, 2008	Non-digestive nonallergic pathologies unrelated to anisakiosis	50	-	16.0% UA3 Ani s 7	-
Uga, 1996	Diarrhea /routine check-up without symptoms	244	-	11.0%	-
<b>Patients with digestive system disorders (6 studies)</b>					

(Continued)

Table 3. (Continued)

Author, year, (reference)	Sample characteristics	Sample size (n) age range (mean, SD)	Skin Prick Tests % (n), >3 mm threshold	ELISA/ImmunoCAP % (n), threshold	Other tests / criteria
Andreu-Ballester, 2008	Cases appendectomized	80	-	2.5% IgG+; 2.5% IgM+; 1.3% IgA+; 2.5% IgE+;	-
Garcia-Perez, 2015	Cases gastrointestinal cancer	47	-	38.3% IgA1+, rAni s 1, 42.6% IgA1+, rAni s 5	-
Gomez, 1998	Sample A: eosinophilic gastroenteritis; sample B: digestive disorder different from eosinophilic gastroenteritis	Sample A: 10; Sample B: 10	Sample A: 80.0% <sup>3</sup> Sample B: 10.0% <sup>3</sup>	Sample A: 80.0% <sup>3</sup> ; Sample B: 10.0% <sup>3</sup>	-
Guillen Bueno, 1999	Crohn disease	73	-	29.0% specific total Ig (G +M+A) 44.0% IgG+; 18.0% IgM+; 53.0% IgA+	Immunoblot: human anisakidosis reference serum (E17); 50 and 250 kDa, with a band of about 70 kDa
Gutierrez, 2002	19 digestive Haemorrhaging; 30 Crohn's disease; 4 digestive cancer; 5 appendicitis	57 (42.38 ± 17.60 years)	-	<b>Crude Extract:</b> Igs-CE 89.4%; IgG-CE 75.4%; IgM- CE 26.3%; IgA- CE 63.1%; IgE- CE 14.0%; <b>Excretory- Secretory antigens:</b> Igs- ES 49.1%; IgG- ES 57.8%; IgM- ES 22.8%; IgA- ES 57.8%	Immunoblot 24.0% and 48.0% of sera from patients with symptoms of Crohn's disease and digestive haemorrhaging, respectively, showed a positive immunorecognition pattern of CE antigen.
Toro, 2004	Dyspeptic symptoms	174	-	13.8% (n = 24) IgE anti Ani s 1	-
<b>Post-partum women (1 study)</b>					
Figueiredo, 2015	170 from high-risk birth unit and 139 from a low-risk birth unit	309	-	19.4% (n = 60) IgG+	-

<sup>1</sup> Pattern types: type 1: group of several bands of medium molecular weight (MW) (30 to 50 kd) and others of low MW (14 to 30 kd); type 2: two or more bands of medium MW; type 3: only one band of medium MW (about 40 kd); type 4: negative blot without any band.

<sup>2</sup> It is not specified whether each subject was tested with both IgE detection and SPT or only one diagnostic technique.

<sup>3</sup> The prevalence rate is the result of an inclusion criterion of the study.

<https://doi.org/10.1371/journal.pone.0203671.t003>

Symptomatic allergic patients to any kind of allergen were found to be positive to *Anisakis* specific IgE detection between 0.0% in children with mastocytosis (González de Olano 2007) [56] to 81.3% among adults with shellfish allergy (Pascual 1996) [44]; diagnostic bands at Immunoblot were visualized in 15–56% of cases (Caballero 2012)[31] (Montoro 1997)[50]. SPT positivity among allergic individuals (14 studies) ranged from 4.5% out of 10570 suspected allergy patients (Consortium 2011) [21] to 64% among 16 patients with acute recidivous urticaria, usually eating fish or other seafood (Montoro 1997) [50]. In particular, chronic urticaria patients reacted to skin tests between 14% and 63% (del Pozo 1997) [57] (Frezzolini A 2010)[38]. The SPT detected also a 14% prevalence of *Anisakis* positivity among atopic subjects (Frezzolini A 2010) [38], while it estimated a positivity ranging from 4.5% to 15% in patients presenting to allergological clinics to deal with suspected allergy (Consortium 2011) [21] (Heffler E 2016) [58]. When considering also anamnestic criteria (symptoms after fish eating), allergy to *Anisakis* was found between in 0.0–14.0% of patients [21, 56–58].



Sensitization rates in 5 study-samples selected from hospital-admitted subjects varied according to different criteria to define AS allergy, from 0.5% with a combination of both positive SPTs and >0.7 kU/L IgE (Falcão H 2008) [54] to 20% when IgE >0.35 kU/L were sufficient to be considered positive (Daschner A 1998) [59].

Six other studies investigated the seroprevalence of specific antibodies against *Anisakis* in patients with digestive system disorders (dyspepsia, appendicitis/appendectomized, digestive haemorrhage, gastric neoplasms), ranging from 1.3% positive to IgA (Andreu-Ballester JC 2008) [60] to 75.4% for IgG (Gutiérrez R 2002) [32]. Gomez et al. detected 80% of eosinophilic gastroenteritis (EG) patients positive to *Anisakis* SPTs, but only 10% among subjects who suffered from digestive disorders other than EG [55].

Positive immunorecognition pattern of *Anisakis* crude extracts (CE) antigens were found in 24% of sera from patients with symptoms of Crohn's disease and 48% of those with digestive haemorrhaging [32].

Finally, IgG positivity was detected in 19.6% of a sample of postpartum women in Brazil (Figueiredo 2015) [61].

## Discussion

We identified 248 research articles and abstracts after searching various bibliographic databases and grey literature. Forty-one studies comprising 31,701 participants from eleven countries overall were included for qualitative synthesis. Most of the studies were set in high raw fish consuming countries, including Spain (n = 22, 6,734 participants) and Italy, where the largest study samples came from (8 studies comprising 17,059 participants). Also, 2 studies took place in Brazil and Norway, respectively, while 1 study was performed in each one of the following countries: Croatia, Indonesia, Japan, Morocco, Portugal, South Africa and South Korea. All the previous evidences support for a global spread of the investigated health subject.

Indirect ELISA and ImmunoCAP methods resulted the most common techniques used to assess *Anisakis* sensitization by far, measuring the presence of different classes of antibodies against various *Anisakis* allergens. As expected, higher hypersensitivity rates were obtained from selected samples of symptomatic, allergic subjects usually eating raw or undercooked seafood, coherently with the well-known association between *Anisakis* sensitization, urticaria/allergic symptoms and undercooked fish intake [44, 50], while prevalence rates tended to be lower if the study sample size was larger [30,62], and when diagnostic techniques were targeting fewer but more specific *Anisakis* antigens, or when setting higher positivity threshold for specific antibodies detection.

The results of the studies investigating *Anisakis* sensitization among the general asymptomatic population clearly highlighted the association between fish consumption and *Anisakis* sensitization. Particularly, the two studies with the largest sample size of random healthy subjects, investigated by SPTs and IgE detection, measured *Anisakis* responsiveness in 16% out of 187 individuals [52] and 6% out of 1,008, respectively [19]. Prevalence rates were greatly affected by *Anisakis* antigens chosen as target of diagnostic tests, with large differences between crude extracts of entire *Anisakis* larvae versus specific recombinant excretory-secretory proteins. More deeply, *Anisakis* larvae crude extracts (CE) might contain several cross-reactive allergens with other nematodes [63–65], crustaceans, insects or mites [44, 66, 67], and their use as target antigens in commercial assays, both serological (ImmunoCAP) and clinical ones (SPT), may lead to less specificity and consequent overestimation of seroprevalence.

Antigen capture ELISA, a variation of indirect ELISA developed to use recombinant antigens Ani s1 and Ani s7, has been applied by two Spanish studies, showing prevalence ranging from 0.4% out of 2,801 individuals [35] to 11.7% out of 264 adults [47]. Successively, another

variation of rAni s1 and rAni s7 indirect ELISA was introduced by Anadon et al. [36] representing the most specific serum test to diagnose anisakiasis, revealing IgE in 40.2% out of 493 allergic subjects in Madrid, with respect to 52.7% positivity prevalence measured by ImmunoCAP from the same serum samples. Antigen capture ELISA with rAni s1 and rAni s7 was latter employed in a Croatian setting, determining 2% out of 500 random healthy subjects sampled from different areas with decreasing prevalence from a maximum of 3.5% among individuals living in islands (assumed as high fish consumers) to 1.5% in urban coastal areas, while a 0.0% prevalence was documented in a rural part of the country (declared to be an area of low or absent seafood intake), stressing the association between *Anisakis* sensitization and fish intake [42]. Recombinant Ani s1 and rAni s7 indirect ELISA was also used as second-step test to analyse ImmunoCAP positive sera obtained from Norwegian healthy blood donors and selected subjects with >1000 kU/L total IgE, resulting in prevalence rates of 0.0% and 0.2%, respectively, in comparison with 0.4% and 16.2% ImmunoCAP positivity rates from the same samples. It is not clear whether these findings confirm that significant part of the ImmunoCAP positive sera are false-positive due to cross-sensitization, or due to the unspecific binding of very high total IgE levels, or due to minor presence of *Anisakis* antigens other than rAni s1 and s7 [30]. Similar considerations regarding cross-reactivity issues and not univocal diagnostic criteria apply to the 24 studies performed in subjects with immune disorders or presenting to allergology units to rule out suspected allergy. Findings of these studies associated *Anisakis* sensitization to both relapsing acute [54] and chronic urticaria [47, 11]; furthermore, allergic manifestation after ingestion of contaminated raw or marinated fish were more frequent when patients were co-sensitized to house dust mites or molds according to SPTs, suggesting possible cross-reactive but clinically relevant allergens between these allergenic sources [58].

Generally, SPTs against *Anisakis* crude extracts resulted in wide ranges of positivity prevalence: the two largest studies measured 4.5% SPT+ out of 10570 suspected allergy subjects [21] and 15% SPT+ out of 3,410 allergy clinic outpatients [58], both percentages decreased to 0.6% and 0.8%, respectively, when allergic symptoms after raw fish intake was added as diagnostic criterion, suggesting how anamnesis plays an important role in pointing out real allergy versus possible cross-reactivity. SPT positivity without clinical manifestation can still be considered an alarm for future allergic reactions after contact with responsible antigens.

As for IgE detection, the largest Japanese study among 2,108 sera of urticaria or food allergy patients revealed 29.8% seroprevalence with a positivity threshold set at >0.7 kU/L, showing that patients suffering from type I allergic symptoms following ingestion of *Anisakis* parasitized fishes are more often sensitized to *Anisakis* specific allergen than to allergens of the seafood per se [20].

Detection of *Anisakis*-induced basophil activation (BAT) by flow cytometry was introduced by Gonzalez-Munoz et al. in 2005 [53]. Frezzolini et al. [38] latter on compared BAT with SPT and ImmunoCAP in diagnosing *Anisakis* sensitization among chronic urticaria patients, atopic subjects and healthy controls. All three tests had good similar sensitivity, but highest specificity of 100% was reached only by BAT supporting BAT as reliable diagnostic tool for anisakiasis, resulting in sensitization prevalence of 67% among chronic urticaria patients and 0% among healthy subjects.

Prevalence of detectable antibodies against *Anisakis* in six studies on patients with anamnesis of digestive disorders (dyspepsia, appendicitis, digestive haemorrhaging, Crohn's disease, digestive cancer) ranged between 1.3% and 89.4% [32, 60]. However, most studies were of limited sample-size, therefore, no conclusive statement could be drawn in relation of *Anisakis* sensitization and the reported conditions. Largest sample included 174 dyspeptic patients showing IgE anti Ani s1 in 13.8% of cases. This finding suggests that *Anisakis* infection might be more frequent than expected, since only the most severe cases that require urgent upper

endoscopy examination are being diagnosed at present, and because of confounding clinical manifestations with other conditions. Furthermore, uncooked-fish ingestion and previous gastric surgery were confirmed to be significantly associated with seropositivity for specific IgE against Ani s1 antigen by means of immunoblotting [68].

Although case-control studies alone are not sufficient to assess causality relationships, the significant higher ratio of positivity to secretory IgA1, rAni s1, or rAni s5 found by Garcia-Perez et al. in 47 gastric cancer patients as compared to 47 healthy controls (38.3% vs 6.4%,  $p$ -value  $<0.001$  and 42.6% vs 10.6%,  $p$ -value  $<0.001$ , respectively), together with the evidence that some parasites inducing chronic inflammation may trigger cancer, and that *Anisakis* larvae have been co-localised incidentally in cases of gastro-intestinal tumours, could suggest that *Anisakis* infection might be a risk factor for the development of digestive tract cancer [33]. Parasites gastrointestinal lesions often mimic ulcers, so that patients diagnosed with digestive bleeding may suffer from unrecognized anisakiasis, explaining the high prevalence of specific antibodies and immunoblot bands of *Anisakis* reference serum [32]. By contrast, the transitory lower prevalence of anti-*Anisakis* specific immunoglobulins documented in 80 appendectomized patients was explained by a diminution of immune responses against pathogens caused by the resection of an area of the Gut Associated Lymphoid Tissue (GALT) [60], even if these results are questionable.

There are no definitive and clear patterns of bands obtained by immunoblotting assays testing for the presence of specific anti-*Anisakis* IgE. One possible explanation of large differences in molecular weights of the bands detected by immunoblotting may be the lack of unanimous preparation of *Anisakis* antigenic extracts and the different blotting conditions, which may vary the number of obtained proteins.

Immunoblotting assays were also used as second-step analysis to rule out cross-reactivity among selected sera which resulted in an already positive to *Anisakis* at ImmunoCAP or ELISA, with miscellaneous results [30, 31, 52]. Most of tested sera were positive to *Anisakis* crude extracts at Immunoblot, but recognized patterns of bands were not univocal and not always concordant with the human anisakiasis reference serum (E1) [30, 52].

We have further analysed the studies dealing with occupationally exposed groups of fishermen, fishmongers and fishing industry workers who are in frequent contact with raw fish and consequently with *Anisakis* larvae [4, 5, 40]. Larger study samples resulted in lower sensitization prevalence: SPTs were positive in 8% out of 578 fish industry workers according to Nieuwenhuizen et al. [5] versus 46.4% out of only 28 fishermen/fishmongers in Purello-D'Ambrosio study [40]. *Anisakis* specific IgE were detected in 11.7% out of 94 fish sector workers by means of UniCAP-100 [4] and 50% out of 28 subjects by means of RAST [40], with antibody levels increasing with duration of occupational exposure. Being at higher risk for sensitization, fishing sector workers can represent ideal candidate for screening and development of better diagnostic tools with ameliorated sensitivity and specificity, to be successively extended in the general population.

Even if we did not perform a quantitative meta-analysis, all studies which compared prevalence rates between random healthy subjects and suspected allergic or digestive disorders patients or occupationally exposed workers tended to show lower responsiveness in the former group. The wide heterogeneity in study samples characteristics, design, settings, diagnostic techniques and criteria to define *Anisakis* sensitization or allergy along with the lack of important information in a large number of studies prevented us to summarize data in order to perform a meta-analysis of prevalence results.

Also, from our systematic review important weaknesses emerged referring to the quality of studies available from literature. In fact, most of the studies were not conducted on samples representative of the general population, as the sample size was not calculated a priori to

accurately infer sensitization prevalence among the population of origin. A random sampling was never performed, being most of the studies conducted on a convenience sample and the response rate almost never reported. Moreover, in the few studies providing complete details on study population, especially random sera samples were often missing any information about subjects' gender and age.

Importantly, not all studies specified target antigens of ELISA and UniCAP methods, giving only general information about specific anti-*Anisakis* IgE detection.

For the previous reasons, comparisons to rule out cross-reactivity influence or differences in specificity and sensitivity were not possible.

Furthermore, correlation between anisakiasis prevalence among different countries with fish parasitism rates of surrounding waters is not straightforward, as nowadays global trading makes seafood from very distant areas easily available. However, high fish consuming habits and genetic susceptibility linked to the presence of DRB1\*1502-DQB1\*0601 haplotype [69] could partially explain the widespread geographical variety observed [21,42,68].

Low sensitization prevalence among Norwegian blood donors and subjects with >1,000 kU/L total IgE despite frequent seafood intake can be explained by the absence of genetical susceptibility haplotype and by the consumption of mainly processed, canned, frozen and farmed Atlantic salmon (which was demonstrated not to be infected from anisakid nematodes) [30,70].

Lastly, as confirmed by several authors, *Anisakis* sensitization can be induced by ingestion of well-cooked contaminated fish due to thermo- and pepsin-resistant allergens [54, 59,71, 72], showing a residual allergenic activity also after specific heat treatment [73].

## Conclusion

This systematic review has highlighted the epidemiological impact of *Anisakis* as hypersensitivity aetiologic factor in the general population from several countries worldwide, also with regard to specific groups of patients and occupationally exposed subjects. We observed that hypersensitivity prevalence estimates varied widely according to geographical area, characteristics of the population studied, diagnostic criteria and laboratory assays with varying sensitivity and specificity. Our findings made us conclude that, if, on one hand, *Anisakis* represents a hidden cause of many adverse reactions after eating undercooked seafood, which are often claimed to be “fish allergy”, including chronic idiopathic urticaria, on the other hand, further studies are needed to overcome the documented misdiagnosis by improving the diagnostic approach and, consequently, to provide more affordable estimates in order to address public health interventions on populations at high risk of exposure to *Anisakis* and to tailor health services related to specific groups.

## Supporting information

**S1 Database. Final database of all included studies.**

(ZIP)

**S1 Table. PRISMA checklist.**

(DOC)

**S2 Table. Quality assessment of the studies included.**

(DOCX)

## Author Contributions

**Conceptualization:** Walter Mazzucco, Daniele Domenico Raia, Claudia Marotta, Vincenzo Ferrantelli, Alessandra Casuccio.

**Data curation:** Daniele Domenico Raia, Claudia Marotta.

**Formal analysis:** Walter Mazzucco, Daniele Domenico Raia.

**Investigation:** Walter Mazzucco, Daniele Domenico Raia.

**Methodology:** Walter Mazzucco, Claudia Marotta, Antonella Costa, Francesco Vitale, Alessandra Casuccio.

**Project administration:** Walter Mazzucco.

**Resources:** Vincenzo Ferrantelli.

**Supervision:** Walter Mazzucco, Francesco Vitale, Alessandra Casuccio.

**Validation:** Walter Mazzucco, Vincenzo Ferrantelli.

**Visualization:** Walter Mazzucco.

**Writing – original draft:** Walter Mazzucco, Daniele Domenico Raia, Claudia Marotta.

**Writing – review & editing:** Walter Mazzucco, Daniele Domenico Raia, Claudia Marotta, Antonella Costa, Vincenzo Ferrantelli, Francesco Vitale, Alessandra Casuccio.

## References

1. Anibarro B, Seoane FJ, Mugica MV. Involvement of hidden allergens in food allergic reactions. *J Investig Allergol Clin Immunol*. 2007 Jan 1; 17(3):168. PMID: [17583104](https://pubmed.ncbi.nlm.nih.gov/17583104/)
2. EFSA Panel on Biological Hazards (BIOHAZ); Scientific Opinion on risk assessment of parasites in fishery products. *EFSA Journal* 2010; 8(4):1543. [91 pp.]. <https://doi.org/10.2903/j.efsa.2010.1543> Available online: [www.efsa.europa.eu](http://www.efsa.europa.eu).
3. Polimeno L, Loiacono M, Pesetti B, Mallamaci R, Mastrodonato M, Azzarone A et al. Anisakiasis, an Underestimated Infection: Effect on Intestinal Permeability of *Anisakis simplex*–Sensitized Patients. *Foodborne Pathog Dis*. 2010 Jul 1; 7(7):809–14. <https://doi.org/10.1089/fpd.2009.0484> PMID: [20367330](https://pubmed.ncbi.nlm.nih.gov/20367330/)
4. Mazzucco W, Lacca G, Cusimano R, Provenzani A, Costa A, Di Noto AM et al. Prevalence of sensitization to *Anisakis simplex* among professionally exposed populations in Sicily. *Arch Environ Occup Health*. 2012 Apr 1; 67(2):91–7. <https://doi.org/10.1080/19338244.2011.578683> PMID: [22524649](https://pubmed.ncbi.nlm.nih.gov/22524649/)
5. Nieuwenhuizen N, Lopata AL, Jeebhay MF, De'Broski RH, Robins TG, Brombacher F. Exposure to the fish parasite *Anisakis* causes allergic airway hyperreactivity and dermatitis. *J Allergy Clin Immunol*. 2006 May 31; 117(5):1098–105. <https://doi.org/10.1016/j.jaci.2005.12.1357> PMID: [16675338](https://pubmed.ncbi.nlm.nih.gov/16675338/)
6. Nieuwenhuizen NE, Lopata AL. Allergic reactions to *Anisakis* found in fish. *Curr Allergy Asthma Rep*. 2014 Aug; 14(8):455. <https://doi.org/10.1007/s11882-014-0455-3> PMID: [25039016](https://pubmed.ncbi.nlm.nih.gov/25039016/)
7. Nieuwenhuizen NE. *Anisakis*—immunology of a foodborne parasitosis. *Parasite immunol*. 2016 Sep 1; 38(9):548–57. <https://doi.org/10.1111/pim.12349> PMID: [27428817](https://pubmed.ncbi.nlm.nih.gov/27428817/)
8. Hochberg NS, Hamer DH, Hughes JM, Wilson ME. Anisakidosis: perils of the deep. *Clin Infect Dis*. 2010 Oct 1; 51(7):806–12. <https://doi.org/10.1086/656238> PMID: [20804423](https://pubmed.ncbi.nlm.nih.gov/20804423/)
9. Daschner A, Alonso-Gómez A, Cabañas R, Suarez-de-Parga JM, López-Serrano MC. Gastroallergic anisakiasis: borderline between food allergy and parasitic disease—clinical and allergologic evaluation of 20 patients with confirmed acute parasitism by *Anisakis simplex*. *J Allergy Clin Immunol*. 2000 Jan 31; 105(1):176–81.
10. Audicana MT, Kennedy MW. *Anisakis simplex*: from obscure infectious worm to inducer of immune hypersensitivity. *Clin microbiol rev*. 2008 Apr 1; 21(2):360–79. <https://doi.org/10.1128/CMR.00012-07> PMID: [18400801](https://pubmed.ncbi.nlm.nih.gov/18400801/)
11. Daschner A, Pascual CY. *Anisakis simplex*: sensitization and clinical allergy. *Curr Opin Allergy Clin Immunol*. 2005 Jun; 5(3):281–5. Review. PMID: [15864089](https://pubmed.ncbi.nlm.nih.gov/15864089/)



12. Choi SJ, Lee JC, Kim MJ, Hur GY, Shin SY, Park HS. The clinical characteristics of *Anisakis* allergy in Korea. *Korean J Intern Med*. 2009 Jun; 24(2):160–3. <https://doi.org/10.3904/kjim.2009.24.2.160> PMID: [19543498](https://pubmed.ncbi.nlm.nih.gov/19543498/)
13. Kasuya S, Hamano H, Izumi S. Mackerel-induced urticaria and *Anisakis*. *Lancet*. 1990 Mar 17; 335(8690):665. PMID: [1969043](https://pubmed.ncbi.nlm.nih.gov/1969043/)
14. García M, Moneo I, Audicana MT, del Pozo MD, Muñoz D, Fernández E et al. The use of IgE immunoblotting as a diagnostic tool in *Anisakis* simplex allergy. *J Allergy Clin Immunol*. 1997 Apr 30; 99(4):497–501. [https://doi.org/10.1016/S0091-6749\(97\)70076-9](https://doi.org/10.1016/S0091-6749(97)70076-9). PMID: [9111494](https://pubmed.ncbi.nlm.nih.gov/9111494/)
15. Lorenzo S, Iglesias R, Leiro J, Ubeira FM, Ansotegui I, García M et al. Usefulness of currently available methods for the diagnosis of *Anisakis* simplex allergy. *Allergy*. 2000; 55(7):627–33. PMID: [10921461](https://pubmed.ncbi.nlm.nih.gov/10921461/)
16. Sastre J, Lluch-Bernal M, Quirce S, Arrieta I, Lahoz C, Del Amo A, et al. A double blind, placebo-controlled oral challenge study with lyophilized larvae and antigen of the fish parasite, *Anisakis* simplex. *Allergy*. 55:560–564. PMID: [10858988](https://pubmed.ncbi.nlm.nih.gov/10858988/)
17. Lluch-Bernal M, Sastre J, Fernández-Caldas E, Marañón F, Cuesta-Herranz J, De las Heras M et al. Conjunctival provocation tests in the diagnosis of *Anisakis* simplex hypersensitivity. *J Investig Allergol Clin Immunol*. 2002; 12(1):21–4. PMID: [12109527](https://pubmed.ncbi.nlm.nih.gov/12109527/)
18. Miles S, Fordham R, Mills C, Valovirta E, Mugford M. A framework for measuring costs to society of IgE-mediated food allergy. *Allergy*. 2005; 60:996–1003. <https://doi.org/10.1111/j.1398-9995.2005.00868.x> PMID: [15969679](https://pubmed.ncbi.nlm.nih.gov/15969679/)
19. García-Palacios L, González ML, Esteban MI, Mirabent E, Perteguer MJ, Cuéllar C. Enzyme-linked immunosorbent assay, immunoblot analysis and RAST fluoroimmunoassay analysis of serum responses against crude larval antigens of *Anisakis* simplex in a Spanish random population. *J Helminthol*. 1996 Dec; 70(4):281–9. PMID: [8960225](https://pubmed.ncbi.nlm.nih.gov/8960225/)
20. Kimura S, Takagi Y, Gomi K. IgE response to *Anisakis* compared to seafood. *Allergy*. 1999 Nov 1; 54(11):1225–6. PMID: [10604562](https://pubmed.ncbi.nlm.nih.gov/10604562/)
21. AAITO-IFIACI *Anisakis* Consortium. *Anisakis* hypersensitivity in Italy: prevalence and clinical features: a multicenter study. *Allergy*. 2011 Dec 1; 66(12):1563–9. <https://doi.org/10.1111/j.1398-9995.2011.02691.x> PMID: [21851362](https://pubmed.ncbi.nlm.nih.gov/21851362/)
22. Armentia A, Lombardero M, Callejo A, Martin Santos JM, Gil FJ, Vega J, et al. Occupational asthma by *Anisakis* simplex. *J Allergy Clin Immunol*. 1998; 102:831–4. PMID: [9819301](https://pubmed.ncbi.nlm.nih.gov/9819301/)
23. Scala E, Giani M, Pirrotta L, Guerra EC, Cadoni S, Girardelli CR, et al. Occupational generalised urticaria and allergic airborne asthma due to *Anisakis* simplex. *Eur J Dermatol*. 2001; 11:249–50. PMID: [11358735](https://pubmed.ncbi.nlm.nih.gov/11358735/)
24. Barbuzza O, Guarneri F, Galtieri G, Gangemi S, Vaccaro M. Protein contact dermatitis and allergic asthma caused by *Anisakis* simplex. *Contact Dermatitis*. 2009; 60: 239–240. <https://doi.org/10.1111/j.1600-0536.2009.01519.x> PMID: [19338604](https://pubmed.ncbi.nlm.nih.gov/19338604/)
25. Conde-Salazar L, Gonzalez MA, Guimaraens D. Type I and Type IV sensitization to *Anisakis* simplex in 2 patients with hand eczema. *Contact Dermatitis*. 2002; 46:36.
26. Moher D, Liberati A, Tetzlaff J, Altman DG, PRISMA Group. Preferred reporting items for systematic reviews and meta-analyses: the PRISMA statement. *J Clin Epidemiol*. 2009 Oct; 62(10):1006–12. <https://doi.org/10.1016/j.jclinepi.2009.06.005> Epub 2009 Jul 23. PMID: [19631508](https://pubmed.ncbi.nlm.nih.gov/19631508/)
27. Munn Z, Moola S, Riitano D, Lisy K. The development of a critical appraisal tool for use in systematic reviews addressing questions of prevalence. *Int J Health Policy Manag*. 2014; 3(3):123–8. <https://doi.org/10.15171/ijhpm.2014.71> PMID: [25197676](https://pubmed.ncbi.nlm.nih.gov/25197676/).
28. Gómez B, Tabar AI, Tuñón T, Larrínaga B, Alvarez MJ, García BE, et al. Eosinophilic gastroenteritis and *Anisakis*. *Allergy*. 1998 Dec; 53(12):1148–54. PMID: [9930590](https://pubmed.ncbi.nlm.nih.gov/9930590/)
29. Desowitz RS, Raybourne RB, Ishikura H, Kliks MM. The radioallergosorbent test (RAST) for the serologic diagnosis of human anisakiasis. *Trans R Soc Trop Med Hyg*. 1985; 79:256–9. PMID: [4039859](https://pubmed.ncbi.nlm.nih.gov/4039859/)
30. Lin AH, Nepstad I, Florvaag E, Egaas E, Van Do T. An extended study of seroprevalence of anti-*Anisakis* simplex IgE antibodies in Norwegian blood donors. *Scand J Immunol*. 2014 Jan; 79(1):61–7. <https://doi.org/10.1111/sji.12130> PMID: [24219706](https://pubmed.ncbi.nlm.nih.gov/24219706/)
31. Caballero ML, Umpierrez A, Perez-Piñar T, Moneo I, de Burgos C, Asturias JA, et al. *Anisakis* simplex recombinant allergens increase diagnosis specificity preserving high sensitivity. *Int Arch Allergy Immunol*. 2012; 158(3):232–40. <https://doi.org/10.1159/000331581> Epub 2012 Mar 2. PMID: [22398334](https://pubmed.ncbi.nlm.nih.gov/22398334/)
32. Gutiérrez R, Cuéllar C. Immunoglobulins anti-*Anisakis* simplex in patients with gastrointestinal diseases. *J Helminthol*. 2002 Jun; 76(2):131–6. <https://doi.org/10.1079/JOH2001104> PMID: [12015825](https://pubmed.ncbi.nlm.nih.gov/12015825/)
33. Garcia-Perez JC, Rodríguez-Perez R, Ballesteros A, Zuloaga J, Fernandez-Punero B, Arias-Díaz J, et al. Previous Exposure to the Fish Parasite *Anisakis* as a Potential Risk Factor for Gastric or Colon



- Adenocarcinoma. *Medicine (Baltimore)*. 2015 Oct; 94(40):e1699. <https://doi.org/10.1097/MD.0000000000001699> PMID: 26448021
34. Figueiredo Junior I, Vericimo MA, Cardoso LR, São Clemente SC, do Nascimento ER, Teixeira GA. Cross-sectional study of serum reactivity to *Anisakis simplex* in healthy adults in Niterói, Brazil. *Acta Parasitol*. 2013 Sep; 58(3):399–404. <https://doi.org/10.2478/s11686-013-0157-3> Epub 2013 Aug 29. PMID: 23990439
  35. Valiñas B, Lorenzo S, Eiras A, Figueiras A, Sanmartín ML, Ubeira FM. Prevalence of and risk factors for IgE sensitization to *Anisakis simplex* in a Spanish population. *Allergy*. 2001 Jul; 56(7):667–71. PMID: 11421926
  36. Anadón AM, Rodríguez E, Gárate MT, Cuéllar C, Romarís F, Chivato T, et al. Diagnosing human anisakiasis: recombinant *Ani s 1* and *Ani s 7* allergens versus the UniCAP 100 fluorescence enzyme immunoassay. *Clin Vaccine Immunol*. 2010 Apr; 17(4):496–502. <https://doi.org/10.1128/CVI.00443-09> Epub 2010 Jan 27. PMID: 20107002
  37. Del Rey Moreno A, Valero A, Mayorga C, Gómez B, Torres MJ, Hernández J, et al. Sensitization to *Anisakis simplex* s.l. in a healthy population. *Acta Trop*. 2006 Mar; 97(3):265–9. Epub 2006 Jan 24. <https://doi.org/10.1016/j.actatropica.2005.11.007> PMID: 16438926
  38. Frezzolini A, Cadoni S, De Pità O. Usefulness of the CD63 basophil activation test in detecting *Anisakis* hypersensitivity in patients with chronic urticaria: diagnosis and follow-up. *Clin Exp Dermatol*. 2010 Oct; 35(7):765–70. <https://doi.org/10.1111/j.1365-2230.2009.03694.x> PMID: 19874355
  39. Bernardini R, Lombardi E, Novembre E, Ingargiola A, Pucci N, Favilli T, et al. Predictors of *Anisakis simplex* symptoms. *Allergy*. 2000 Oct 1; 55(10):979–80. PMID: 11030385
  40. Purello-D'Ambrosio F, Pastorello E, Gangemi S, Lombardo G, Ricciardi L, Fogliani O, et al. Incidence of sensitivity to *Anisakis simplex* in a risk population of fishermen/fishmongers. *Ann Allergy Asthma Immunol*. 2000 Apr; 84(4):439–44. [https://doi.org/10.1016/S1081-1206\(10\)62278-8](https://doi.org/10.1016/S1081-1206(10)62278-8) PMID: 10795653
  41. Abattouy N, Valero A, Martín-Sánchez J, Peñalver MC, Lozano J. Sensitization to *Anisakis simplex* species in the population of northern Morocco. *J Investig Allergol Clin Immunol*. 2012; 22(7):514–9. PMID: 23397674
  42. Mladineo I, Poljak V, Martínez-Sernández V, Ubeira FM. Anti-*Anisakis* IgE seroprevalence in the healthy Croatian coastal population and associated risk factors. *PLoS Negl Trop Dis*. 2014 Feb 6; 8(2):e2673. <https://doi.org/10.1371/journal.pntd.0002673> PMID: 24516680
  43. Estrada Rodríguez JL, Gozalo Reques F. Sensitization to *Anisakis simplex*: an unusual presentation. *Allergol Immunopathol (Madr)*. 1997 Mar-Apr; 25(2):95–7.
  44. Pascual C, Crespo JF, Ortega N, Ornia N, San-Martin MS, Martin-Esteban M. High prevalence of sensitization to *Anisakis simplex* (AK) in patients with increased levels of total IgE. *J Allergy Clin Immunol*. 1996 Jan 1; 97(1):233.
  45. Rodríguez A, Trujillo MJ, Tornero P, Baeza ML, Herrero T, Pérez A, et al. 1042 Prevalence of *Anisakis simplex* sensitization in patients with suspicion of drug allergy. *J Allergy Clin Immunol*. 2000 Jan 1; 105(1):S354.
  46. Uga S, Ono K, Kataoka N, Hasan H. Seroepidemiology of five major zoonotic parasite infections in inhabitants of Sidoarjo, East Java, Indonesia. *Southeast Asian J Trop Med Public Health*. 1996 Sep 1; 27:556–61. PMID: 9185269
  47. Puente P, Anadón AM, Rodero M, Romarís F, Ubeira FM, Cuéllar C. *Anisakis simplex*: the high prevalence in Madrid (Spain) and its relation with fish consumption. *Exp Parasitol*. 2008 Feb; 118(2):271–4. Epub 2007 Aug 3. <https://doi.org/10.1016/j.exppara.2007.07.002> PMID: 17825294
  48. Del Rey Moreno A, Valero A, Mayorga C, Gómez B, Torres MJ, Hernández J, et al. Sensitization to *Anisakis simplex* s.l. in a healthy population. *Acta Trop*. 2006 Mar; 97(3):265–9. <https://doi.org/10.1016/j.actatropica.2005.11.007> PMID: 16438926
  49. Guillén-Bueno R, Gutiérrez-Ramos R, Perteguer-Prieto MJ, Oliveira-Martin A, Fernandez-Blanco I, Pozuelo-García A, et al. Anti-*Anisakis* antibodies in the clinical course of Crohn's disease. *Digestion*. 1999; 60(3):268–73. <https://doi.org/10.1159/000007668> PMID: 10343141
  50. Montoro A, Perteguer MJ, Chivato T, Laguna R, Cuéllar C. Recidivous acute urticaria caused by *Anisakis simplex*. *Allergy*. 1997 Oct; 52(10):985–91. PMID: 9360749
  51. Kim J, Jo JO, Choi SH, Cho MK, Yu HS, Cha HJ, et al. Seroprevalence of antibodies against *Anisakis simplex* larvae among health-examined residents in three hospitals of southern parts of Korea. *Korean J Parasitol*. 2011 Jun; 49(2):139–44. <https://doi.org/10.3347/kjp.2011.49.2.139> PMID: 21738269
  52. Ventura MT, Napolitano S, Menga R, Cecere R, Asero R. *Anisakis simplex* hypersensitivity is associated with chronic urticaria in endemic areas. *Int Arch Allergy Immunol*. 2013; 160(3):297–300. <https://doi.org/10.1159/000339869> PMID: 23095317

53. Gonzalez-Muñoz M, Luque R, Nauwelaers F, Moneo I. Detection of *Anisakis simplex*-induced basophil activation by flow cytometry. *Cytometry B Clin Cytom*. 2005 Nov; 68(1):31–6. <https://doi.org/10.1002/cyto.b.20070> PMID: 16184614
54. Falcão H, Lunet N, Neves E, Iglésias I, Barros H. *Anisakis simplex* as a risk factor for relapsing acute urticaria: a case-control study. *J Epidemiol Community Health*. 2008 Jul; 62(7):634–7. <https://doi.org/10.1136/jech.2007.061572> PMID: 18559447
55. Gómez B, Tabar AI, Tuñón T, Larrínaga B, Alvarez MJ, Garcia BE, et al. Eosinophilic gastroenteritis and *Anisakis*. *Allergy*. 1998 Dec; 53(12):1148–5 PMID: 9930590
56. Gonzalez de Olano D, De La Hoz Caballer B, Nunez Lopez R, Sanchez Munoz L, Cuevas Agustin M, Dieguez MC, et al. Prevalence of allergy and anaphylactic symptoms in 210 adult and pediatric patients with mastocytosis in Spain: a study of the Spanish network on mastocytosis (REMA). *Clin Exp Allergy*. 2007 Oct; 37(10):1547–55. <https://doi.org/10.1111/j.1365-2222.2007.02804.x> PMID: 17883734
57. Del Pozo MD, Audicana M, Diez JM, Munoz D, Ansotegui IJ, Fernández E, et al. *Anisakis simplex*, a relevant etiologic factor in acute urticaria. *Allergy*. 1997 May; 52(5):576–9. PMID: 9201371
58. Heffler E, Sberna ME, Sichili S, Intravaia R, Nicolosi G, Porto M, et al. High prevalence of *Anisakis simplex* hypersensitivity and allergy in Sicily, Italy. *Ann Allergy Asthma Immunol*. 2016 Feb; 116(2):146–50. <https://doi.org/10.1016/j.anaai.2015.12.014> PMID: 26815707
59. Daschner A, Alonso-Gómez A, Caballero T, Barranco P, Suarez-De-Parga JM, López-Serrano MC. Gastric anisakiasis: an underestimated cause of acute urticaria and angio-oedema? *Br J Dermatol*. 1998 Nov; 139(5):822–8. PMID: 9892948
60. Andreu-Ballester JC, Pérez-Griera J, Ballester F, Colomer-Rubio E, Ortiz-Tarín I, Pelayo V, et al. *Anisakis simplex* and *Kudoa* sp.: evaluation of specific antibodies in appendectomized patients. *Exp Parasitol*. 2008 Jul; 119(3):433–6. <https://doi.org/10.1016/j.exppara.2008.03.014> PMID: 18456263
61. Figueiredo I, Vericimo M, Terra L, Ferreira T, São Clemente SC, Teixeira G. Association between immunoreactivity to *Anisakis* spp. antigens and high-risk pregnancy. *Acta Parasitol*. 2015 Dec; 60(4):609–13. <https://doi.org/10.1515/ap-2015-0085> PMID: 26408579
62. Lin AH, Florvaag E, Van Do T, Johansson SG, Levsen A, Vaali K. IgE sensitization to the fish parasite *Anisakis simplex* in a Norwegian population: a pilot study. *Scand J Immunol*. 2012 Apr; 75(4):431–5. <https://doi.org/10.1111/j.1365-3083.2012.02670.x> PMID: 22420531
63. Kennedy MW, Tierney J, Ye P, McMonagle FA, McIntosh A, McLaughlin D, et al. The secreted and somatic antigens of the third stage larva of *Anisakis simplex*, and antigenic relationship with *Ascaris suum*, *Ascaris lumbricoides*, and *Toxocara canis*. *Mol Biochem Parasitol*. 1988 Oct; 31(1):35–46. PMID: 3054540
64. Iglesias R, Leiro J, Ubeira FM, Santamarina MT, Navarrete I, Sanmartín ML. Antigenic cross-reactivity in mice between third-stage larvae of *Anisakis simplex* and other nematodes. *Parasitol Res*. 1996; 82(4):378–81. PMID: 8740558
65. Lorenzo S, Iglesias R, Audicana MT, García-Villaescusa R, Pardo F, Sanmartín ML, et al. Human immunoglobulin isotype profiles produced in response to antigens recognized by monoclonal antibodies specific to *Anisakis simplex*. *Clin Exp Allergy*. 1999 Aug; 29(8):1095–101. PMID: 10457114
66. Johansson E, Aponno M, Lundberg M, van Hage-Hamsten M. Allergenic cross-reactivity between the nematode *Anisakis simplex* and the dust mites *Acarus siro*, *Lepidoglyphus destructor*, *Tyrophagus putrescentiae*, and *Dermatophagoides pteronyssinus*. *Allergy*. 2001 Jul; 56(7):660–6. PMID: 11421925
67. Guarneri F, Guarneri C, Benvenga S. Cross-reactivity of *Anisakis simplex*: possible role of Ani s 2 and Ani s 3. *Int J Dermatol*. 2007 Feb; 46(2):146–50. <https://doi.org/10.1111/j.1365-4632.2006.03091.x> PMID: 17269964
68. Toro C, Caballero ML, Baquero M, García-Samaniego J, Casado I, Rubio M, et al. High prevalence of seropositivity to a major allergen of *Anisakis simplex*, Ani s 1, in dyspeptic patients. *Clin Diagn Lab Immunol*. 2004 Jan; 11(1):115–8. <https://doi.org/10.1128/CDLI.11.1.115-118.2004> PMID: 14715556
69. Sanchez-Velasco P, Mendizabal L, Anton EM, Oejo-Vinyals G, Jerez J, Leyva-Cobian F. Association of hypersensitivity to the nematode *Anisakis simplex* with HLA class II DRB1\*1502-DQB1\*0601 haplotype. *Hum Immunol*. 2000; 61:314–9. PMID: 10689122
70. Alexander J, Frøyland L, Hemre GI. Fish and Seafood Consumption in Norway—Benefits and Risks. Norway: Norwegian Scientific Committee for Food Safety, 2006.
71. Caballero ML, Moneo I. Several allergens from *Anisakis simplex* are highly resistant to heat and pepsin treatments. *Parasitol Res*. 2004; 93:248–51. <https://doi.org/10.1007/s00436-004-1099-3> PMID: 15138891
72. Vidaček S, de las Heras C, Solas MT, Mendizabal A, Rodríguez-Mahillo AI, González-Muñoz M, et al. *Anisakis simplex* allergens remain active after conventional or microwave heating and pepsin treatments of chilled and frozen L3 larvae. *J Sci Food Agric*. 2009; 89:1997–2002.

73. Tejada M, Olivares F, de las Heras C, Careche M, Solas MT, García ML, et al. Antigenicity of *Anisakis simplex* s.s. L3 in parasitized fish after heating conditions used in the canning processing. *J Sci Food Agric*. 2015 Mar 30; 95(5):922–7. <https://doi.org/10.1002/jsfa.6763> PMID: 24888867