



THE UNIVERSITY *of* EDINBURGH

Edinburgh Research Explorer

Grounding line migration from 1992 to 2011 on Petermann Glacier, North-West Greenland

Citation for published version:

Hogg, A, Shepherd, A, Gourmelen, N & Engdahl, M 2016, 'Grounding line migration from 1992 to 2011 on Petermann Glacier, North-West Greenland', *Journal of Glaciology*. <https://doi.org/10.1017/jog.2016.83>

Digital Object Identifier (DOI):

[10.1017/jog.2016.83](https://doi.org/10.1017/jog.2016.83)

Link:

[Link to publication record in Edinburgh Research Explorer](#)

Document Version:

Publisher's PDF, also known as Version of record

Published In:

Journal of Glaciology

Publisher Rights Statement:

© The Author(s) 2016. This is an Open Access article, distributed under the terms of the Creative Commons Attribution licence (<http://creativecommons.org/licenses/by/4.0/>), which permits unrestricted re-use, distribution, and reproduction in any medium, provided the original work is properly cited.

General rights

Copyright for the publications made accessible via the Edinburgh Research Explorer is retained by the author(s) and / or other copyright owners and it is a condition of accessing these publications that users recognise and abide by the legal requirements associated with these rights.

Take down policy

The University of Edinburgh has made every reasonable effort to ensure that Edinburgh Research Explorer content complies with UK legislation. If you believe that the public display of this file breaches copyright please contact openaccess@ed.ac.uk providing details, and we will remove access to the work immediately and investigate your claim.



Grounding line migration from 1992 to 2011 on Petermann Glacier, North-West Greenland

ANNA E. HOGG,¹ ANDREW SHEPHERD,¹ NOEL GOURMELEN,²
MARCUS ENGDAHL³

¹Centre for Polar Observation and Modelling, School of Earth and Environment, University of Leeds, Leeds, LS2 9JT, UK

²Institute of Geography, School of GeoSciences, University of Edinburgh, Drummond Street, Edinburgh EH8 9XP, UK

³Directorate of Earth Observation Programmes, ESA-ESRIN, Via Galileo Galilei, 00044 Frascati, Italy

Correspondence: Anna E. Hogg <a.e.hogg@leeds.ac.uk>

ABSTRACT. We use satellite radar interferometry to investigate changes in the location of the Petermann Glacier grounding line between 1992 and 2011. The grounding line location was identified in 17 quadruple-difference interferograms produced from European Remote Sensing (ERS)-1/2 data – the most extensive time series assembled at any ice stream to date. There is close agreement (20.6 cm) between vertical displacement of the floating ice shelf and relative tide amplitudes simulated by the Arctic Ocean Dynamics-based Tide Model 5 (AODTM-5) Arctic tide model. Over the 19 a period, the grounding line position varied by 470 m, on average, with a maximum range of 7.0 km observed on the north-east margin of the ice stream. Although the mean range (2.8 km) and variability (320 m) of the grounding line position is considerably lower if the unusually variable north-east sector is not considered, our observations demonstrate that large, isolated movements cannot be precluded, thus sparse temporal records should be analysed with care. The grounding line migration observed on Petermann Glacier is not significantly correlated with time ($R^2 = 0.22$) despite reported ice shelf thinning and episodes of large iceberg calving, which suggests that unlike other ice streams, on the south-west margin of the Greenland ice sheet, Petermann Glacier is dynamically stable.

KEYWORDS: ERS, grounding line, InSAR, interferometry

1. INTRODUCTION

Ice losses from Greenland and Antarctica have increased rapidly over recent decades – by 278 and 148%, respectively, since 1992 – and the most pronounced changes have occurred in places where the ice sheets are grounded well below sea level (Shepherd and others, 2012). Such marine-based and marine-terminating ice-sheet sectors are particularly vulnerable to environmental change, because they are in contact with atmospheric and oceanic masses that are relatively warm, where modest changes in temperature can melt and destabilise the ice. In the most rapidly changing regions, such as the Amundsen Sea sector of West Antarctica and Jakobshavn Glacier in west Greenland, warm ocean currents have triggered glacier retreat (Park and others, 2013), leading to increased rates of ice flow (Joughin and others, 2014) and ice thinning (McMillan and others, 2014) far inland. Elsewhere, at the Antarctic Peninsula for example, changes in air temperature are believed to be a driver (Scambos and others, 2000) of ice shelf collapse (Rott and others, 1996), which in turn, has also triggered drawdown of inland ice (Rignot and others, 2004). Ice-sheet grounding lines are therefore a sensitive indicator of dynamic instability, and modelling the rate and spatial pattern of future change remains one of the most significant challenges limiting the accuracy of sea-level rise projections (Church and others, 2013).

An ice-sheet grounding line is the junction between an ice shelf, which floats on the ocean surface, and the ice sheet which is grounded on bedrock (Fig. 1). In reality grounding lines are transitory features with a location that can fluctuate on short (sub-daily) timescales, for example due to the effects

of ocean tides, which alter the proportion of ice that floats. The grounding line is located at the base of the ice sheet whereas the hinge line is the manifestation of this feature at the ice surface. Although there may be a small lateral variation in the position of the hinge and grounding lines we can infer from elastic beam theory that their migration rates are directly correlated therefore tracking either is an accurate measure of grounding line motion or stasis (Rignot, 1996). Both junctions lie within a region called the grounding zone, which can be up to a few kilometres wide in the direction of ice flow depending on factors such as bedrock topography and tidal amplitude. The grounding zone is of critical importance for ice-sheet stability, because it determines the rate at which ice is discharged into the oceans from inland (Schoof, 2007). In the absence of pinning points, grounding line retreat leads to a reduction in the resistive force acting to restrain the grounded ice, and consequently an increase in the rate of ice discharge. These effects have been observed and simulated (Joughin and others, 2010) to rapidly propagate ice drawdown from further inland. Relatively modest changes at the termini of outlet glaciers can therefore have a marked impact on the wider ice-sheet mass imbalance. Although ice-sheet grounding lines can be detected using ground based techniques, such as kinematic GPS measurements of tidal flexure (Vaughan, 1995), they can be logistically difficult or impossible to access, and the high cost of repeated surveys limits the practicality of this approach on large scales. Because of this, techniques based upon satellite observations have emerged as an alternative solution, enabling relatively large quantities of data to be regularly acquired. Three independent Earth observation techniques

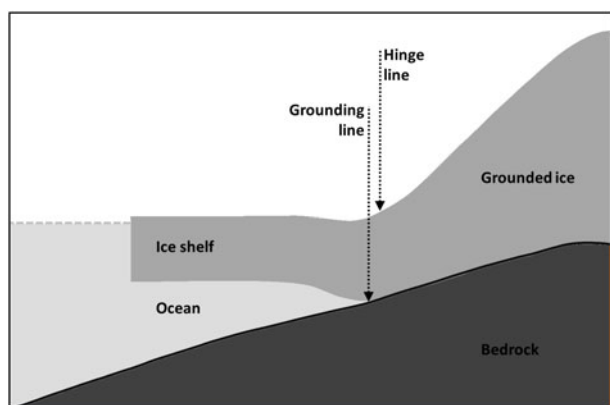


Fig. 1. Illustration showing the position of the ice-sheet grounding line at the ice, bedrock, ocean interface and the hinge line visible at the ice surface.

have been employed to date: (1) the detection of change in surface shading caused by the break in ice-sheet surface slope in optical imagery (Scambos and others, 2007; Bindschadler and others, 2011), (2) the detection of tidal motion in quadruple difference interferometric synthetic aperture radar (QDInSAR) observations (Goldstein and others, 1993) and (3) repeat satellite altimeter measurements (Fricker and Padman, 2006). It has been shown (Rignot, 1998a) that the technique of QDInSAR is capable of detecting grounding lines with fine (30 m) spatial resolution and with high precision. However, the temporal sampling frequency of the technique is limited, because of the relative infrequency with which suitable SAR image triplets are acquired; typically, at least three SAR images acquired within a few days are needed. The most useful QDInSAR data were acquired during periods when the two European Remote Sensing (ERS) satellites were orbiting in a 3 d repeat cycle between 1991/92, 1993/94 and in 2011; and in a 1 d repeat cycle between 1995/96.

2. PETERMANN GLACIER STUDY AREA

Petermann Glacier is a large marine terminating ice stream located on the north-west coast of the Greenland ice sheet at 81°N and 62°W (Fig. 2). It drains ~4% of the total ice-sheet area (Munchow and others, 2014) and is one of only seven ice streams in Greenland with a permanently floating section (Moon and others, 2012). Inland, Petermann Glacier is grounded on bedrock more than 300 m below present day sea level and its 1280 km² floating ice tongue flows through a steep sided, 20 km wide fjord into the Hall Basin in the Nares Strait. Satellite observations of surface elevation change inland of the Petermann Glacier grounding line show a moderate rate of thinning (0.3 m a⁻¹) for the period 2003–07, of which 50% is directly attributed to a negative surface mass-balance anomaly (Pritchard and others, 2009). Episodic calving events in 1992, 2010 and 2012 have decreased the area of the floating ice shelf by ~40% (Nick and others, 2012; Munchow and others, 2014). However, there is no evidence to suggest that these calving events are occurring with greater frequency, or that they have affected the glacier speed, which has remained steady at ~1 km a⁻¹ in the fastest regions (Nick and others, 2012). This is in part because, at Petermann Glacier, high rates of channelised basal melting remove the vast majority (80%)

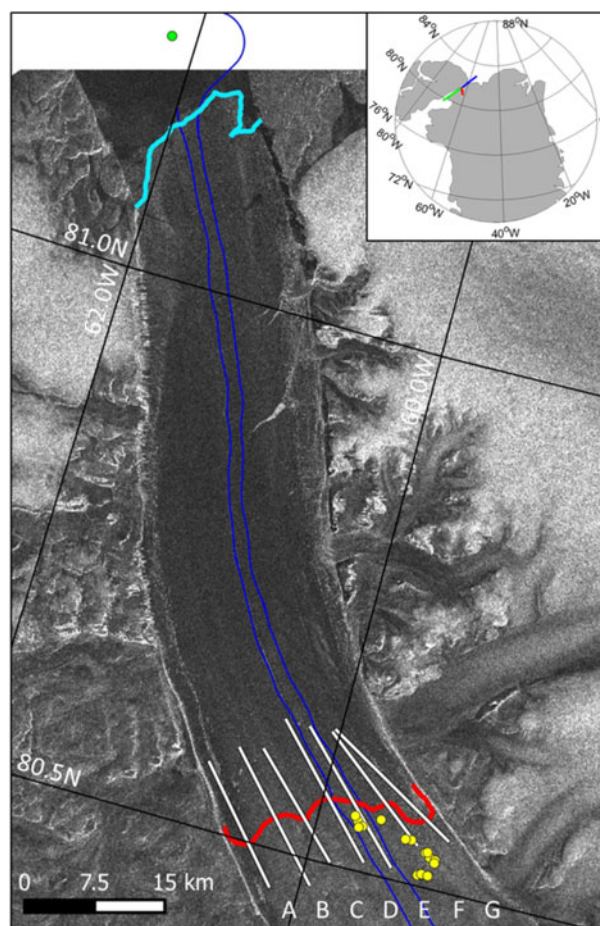


Fig. 2. Map of Petermann Glacier, a marine terminating ice stream in north-west Greenland. The ice stream is shown by an ERS-1 synthetic aperture radar image, and flows from the bottom to top of the image. The 1995/96 grounding line is shown in red, along-flow transects are marked in white (A–G), the calving front is shown in cyan, and ICEBridge flight-line 1 (west) and 2 (east) separated by 2.9 km is shown in blue. Also shown are the seed locations chosen for interferometric phase unwrapping (yellow), and for tide model heights (green). The inset shows the location of Petermann Glacier in Greenland and the location of the start and end points of the fjord (red) and Nares Strait (blue (north) and green (south)) tide model transects.

of floating ice before calving can occur, making ice/ocean interactions the dominant control on ice mass imbalance (Rignot and Steffen, 2008). Although ship-based studies confirm that there is sufficient heat available within the fjord waters to drive the rapid rates of basal melting inferred from satellite observations (Johnson and others, 2011) it is not certain whether potential changes in ocean temperature, mixing, or sea ice cover might lead to additional melting potential, fuelling speculation that a warming ocean could trigger future grounding line retreat on Petermann Glacier (Johnson and others, 2011; Nick and others, 2013).

3. DATA AND METHODS

Maintaining interferometric phase coherence in repeat pass SAR acquisitions is challenging over ice-covered terrain, because the surface rapidly deforms due to flow and in response to changing meteorological events such as snow deposition and redistribution and melting. The nominal 35 d orbit repeat period of the European Space Agency's (ESA)

ERS 1 and 2 satellites is typically too long to acquire viable (i.e. coherent) repeat-pass interferometric data over ice, so both platforms were moved into shorter repeat orbits during campaigns dedicated to this purpose. Between 28 December 1991 and 30 March 1992, ERS-1 was placed in a 3 d orbit repeat cycle (termed the first ice phase) and, after the success of this campaign, it was repeated in 1993/94 and in 2011 with ERS-2 in order to acquire repeat measurements over Greenland and Antarctica. SAR data acquired by ERS-1 and 2 between 21 March 1995 and 05 June 1996, when both satellites orbited in tandem 35 d repeats, separated by 1 d, is also suitable for interferometry over ice-covered regions as the short temporal baseline allows phase coherence to be maintained between SAR images acquired from both sensors. Here, we used ERS-1 and 2 data acquired on track 12, frame 1953 over Petermann Glacier during all 3 d ice campaigns and the 1 d tandem campaign, between 1992 and 2011 (Table 1), to produce measurements of the grounding line.

We processed ERS-1 and ERS-2 data from raw to Single Look Complex (SLC) images using precise Department of Earth Observation and Space Systems (DEOS) orbit ephemerides (Scharroo and Visser, 1998) when available. Temporally sequential SLC master and slave image pairs were formed from ERS-1 and 2 data acquired prior to 1997 (Table 1). However, failure of the ERS-2 gyroscope in 2001 (Rosich and others, 2001) resulted in larger and less stable Doppler centroid frequencies, and so it is not always possible to pair temporally sequential images in data acquired during the latter period. To achieve high-interferometric coherence low Doppler centroid differences are required to ensure sufficient spectral overlap, therefore in 2011 SLC image pairs were formed when the Doppler centroid difference was <800 Hz and when temporal baselines were <9 d. Each SAR image pair was co-registered using common features in the backscatter intensity images, with the aid of initial co-registration offsets determined from the orbital state vectors. Assuming the influence of atmospheric delay on the phase signal is negligible, the interferograms computed

from each SAR image pair contain signal contributions from the Earth's curvature, topography and surface displacement, as well as noise. We simulated the Earth curvature and topographic phase signals using the orbital geometry of each SAR image pair and using a DEM generated from the ASTER GDEM data, and we assume that no significant ice-surface elevation change has occurred in the time interval between the DEM and SAR data acquisition. These signals were then subtracted from the smoothed interferograms to reduce noise and then isolate the surface displacement phase signal. At the Petermann Glacier, displacement is caused by ice flow and, in floating sections, by ocean tides.

We then combine terrain-corrected interferograms to form quadruple difference interferograms (Rignot, 1998a), a process that removes common signals due to constant ice flow. Over short-time periods, this approach is usually effective because ice flow is relatively stable in comparison with tidal motion; however, short-term changes in ice velocity such as the tidally induced motion observed on Rutford Ice Stream (Rosier and others, 2015), would not be removed using this technique. The remaining phase signal, which is manifest as a dense band of interference fringes at the boundary between grounded and floating ice (Fig. 3a), can then be attributed to vertical surface displacement caused by ocean tides. We unwrapped the quadruple difference interferogram phase across the glacier grounding zone using the branch cut method (Goldstein and others, 1988) to calculate the absolute differential displacement in the satellite line of sight (Fig. 3b). It was not possible to initiate phase unwrapping in the same location in all instances (Fig. 2) due to temporal decorrelation of the SAR imagery inland of the glacier grounding zone. This decorrelation also limited the extent of interferometric data, necessitating the use of manual bridges to link areas of disconnected phase in some places. The bridge locations were selected by identifying the successfully unwrapped regions in each interferogram, and then visually pairing neighbouring unwrapped and wrapped pixels in the same interferometric fringe. The unwrapped phase value was assigned from the reference to

Table 1. Details of all SAR data used in this study, including sensor, track number, acquisition dates and temporal baseline

Grounding line ID	Sensor	Date (yyyymmdd)				Temporal baselines <i>d</i>
		Image 1	Image 2	Image 3	Image 4	
92a	ERS-1	19920207	19920210	19920210	19920213	3, 3
92b	ERS-1	19920210	19920213	19920213	19920216	3, 3
92c	ERS-1	19920213	19920216	19920216	19920219	3, 3
92d	ERS-1	19920216	19920219	19920219	19920222	3, 3
92e	ERS-1	19920219	19920222	19920222	19920225	3, 3
92f	ERS-1	19920222	19920225	19920225	19920228	3, 3
92g	ERS-1	19920225	19920228	19920228	19920302	3, 3
92h	ERS-1	19920228	19920302	19920302	19920305	3, 3
92i	ERS-1	19920302	19920305	19920305	19920308	3, 3
92j	ERS-1	19920308	19920311	19920311	19920314	3, 3
92k	ERS-1	19920311	19920314	19920314	19920317	3, 3
92l	ERS-1	19920314	19920317	19920317	19920320	3, 3
95a	ERS-1/2	19951028	19951029	19960229	19960301	1, 1
11a	ERS-2	20110516	20110522	20110519	20110525	6, 6
11b	ERS-2	20110531	20110603	20110603	20110606	3, 3
11c	ERS-2	20110531	20110603	20110606	20110609	3, 3
11d	ERS-2	20110603	20110606	20110606	20110609	3, 3

The data are listed in rows identifying each SAR frame element of the 17 quadruple difference interferograms used to detect the grounding line (identifiable as 92a through 11d).

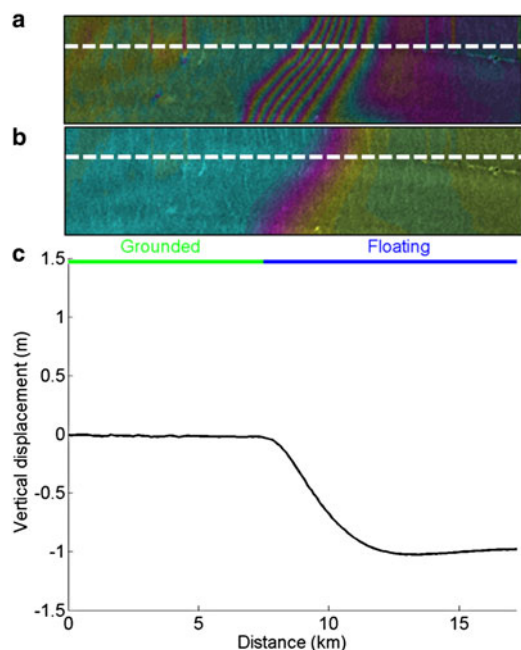


Fig. 3. Wrapped (a) and unwrapped (b) quadruple difference interferometric fringe pattern across the grounding zone of Petermann Glacier, from QDInSAR pair 95a. The grounded (green) and floating (blue) sections of the transect are identified above a profile of the differential vertical displacement (black) extracted along a transect F (white dashed) (c).

the wrapped pixel, and then the unwrapping procedure was recomputed. Finally we calculated differential vertical displacement from the unwrapped phase using the satellite geometry (Fig. 3c).

We identified the Petermann Glacier grounding line by manually delineating the inland limit of tidal flexure, following the method of Rignot and others (2014). In longitudinal profiles (Fig. 3c) grounded ice shows no significant vertical displacement, in contrast to the floating ice shelf, which shows a relative displacement ranging from -124 to $+143$ cm at times of extreme tidal difference (Fig. 4). In all 17 quadruple difference interferograms the grounding zone is identifiable as a ramp between 7 and 47 interference fringe cycles across the full width of the ice stream, oriented perpendicular to the direction of flow. There is a strong ($R^2 = 0.94$) positive correlation between the fringe density and the magnitude of the ice-shelf vertical displacement. The inland limit of tidal flexure is more difficult to identify in differential interferograms with a lower fringe density because the magnitude of the vertical displacement signal is smaller; however, the fringes that are present are spread over approximately the same grounding zone width. To investigate the influence of fringe density on the position of the grounding line, we scaled the wrapped phase signal in each differential interferogram by factors of two, three and four. Although this process increased the density of fringes in the grounding zone, it also scaled the phase noise, and when higher scaling factors were employed the phase signal in the differential interferogram became saturated, rendering the grounding zone undetectable. We mapped the grounding line position in the original and phase scaled differential interferograms and examined the difference in position of the inland limit of tidal flexure. Although the fringe density was much higher in the phase scaled images, there was no visible change in the grounding line location measured, and so we

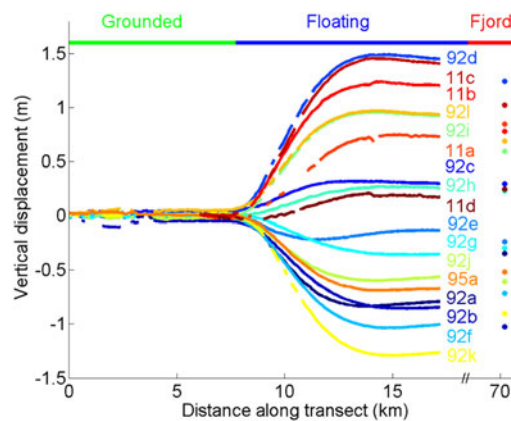


Fig. 4. Relative vertical displacement along the transect E flow-line profile of the Petermann Glacier grounding zone, measured using 17 quadruple difference interferometry (Table 1). Also shown (coloured dots) are relative tidal amplitudes at the same epoch as determined from the AODTM-5 model Arctic Ocean tide model. Between 0 and 8 km, there is no significant vertical displacement, indicating that this section of the glacier is grounded on bedrock. However, from 8 km and farther seaward, up to 1.5 m of relative displacement are recorded, indicating this section of the glacier is influenced by the ocean tide and therefore floating.

used the unscaled differential interferograms to identify the grounding line position throughout the rest of this study.

We estimated the uncertainty of each QDInSAR grounding line measurement by translating noise in the vertical deformation profiles into a lateral error in the grounding line position. A running mean of the vertical deformation was measured from all 17 quadruple difference interferogram profiles extracted along transect D (Fig. 2), with the residuals computed as the difference of each point from the local mean. All 17 profiles exhibited low variability with a mean absolute difference of 0.4 ± 0.2 cm, and a larger total range of 6.5 cm. The range of the residuals measured along each profile is comparable on both grounded and floating ice, indicating that the uncertainty is independent of tide amplitude. This suggests that the uncertainty is systematic rather than geophysical in origin, and that it may reasonably be used as a formal error budget associated with QDInSAR grounding line measurements made in other areas. We retrieved the standard deviation of the residuals from the mean at the grounding line of each displacement profile, and then translated this into the lateral error in grounding line position by measuring the distance seaward of the grounding line over which the mean vertical displacement was within the range of error. The mean lateral precision of a QDInSAR grounding line position is 30 m with a total range up to 100 m.

4. RESULTS

4.1. Tidal displacement of floating ice

We compared modelled tidal differences with the relative displacement of the Petermann Glacier Ice Shelf, as recorded in each quadruple difference interferogram, along seven stream-wise transects bisecting the grounding zone (Fig. 4). Although the transects are not regularly orientated, they were selected to optimise the data density while also sampling both the most and least variable regions of the Petermann Glacier grounding zone. On the inland

(grounded) ice there is very little vertical displacement, and the mean range of relative heights is 3.7 ± 2.0 cm, which is attributed to error in the QDInSAR vertical displacement measurement. In contrast, relative displacement of the floating ice shelf is much larger due to the effects of the ocean tide, and spans a range of 2.8 m over the study period. Overall, there is close agreement between the magnitude of the ice-shelf relative displacement and the size of differential tides predicted by the AODTM-5 model, with positive or negative displacements recorded at times of high and low differential tides respectively. Across the boundary between grounded and freely-floating ice, there is a rapid change in vertical displacement in all 17 interferometric displacement profiles (Fig. 4). The zone of tidal flexure is on average 4.4 ± 0.8 km wide; however, the relatively large range of 2.8 km is caused by three outliers that correspond to low (<0.5 m) observed tide amplitudes, and these are likely to be least certain. Although the change in slope is most abrupt at times of high relative displacement, the transition between grounded and floating ice remains distinct in all profiles, allowing the grounding line to be located as the landward break in surface slope across the zone of ice-shelf flexure (Rignot and others, 1996).

4.2. Comparison of observed and modelled tidal displacement

To verify the AODTM-5 Arctic tide model, we compared the magnitude of the vertical displacement measured in the differential interferograms with differential tides calculated from the tide model (Padman and Erofeeva, 2004). For this comparison, we assume that vertical displacement is solely caused by ocean tides, and is therefore directly comparable. The landward extent of the AODTM-5 tide model domain ends 71 km from the Petermann Glacier grounding line (Fig. 5) which, for the majority of our survey period, is seaward of the ice-shelf calving front (Fig. 2). Consequently, it is not possible to obtain tidal predictions at locations present in the interferometric data. To assess the impact of this mismatch, we examined the spatial variability of modelled tides at the time of each SAR image

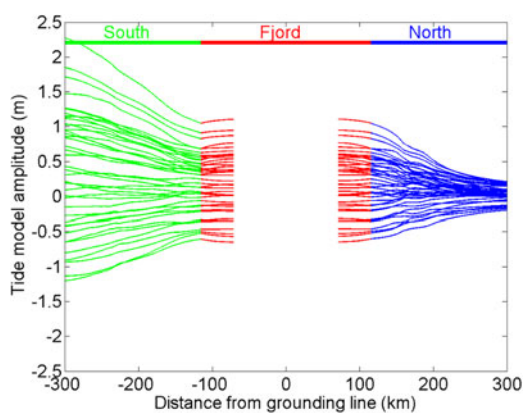


Fig. 5. Ocean tide amplitude in the Petermann Glacier fjord (red), and to the north (blue) and south (green) of the fjord in Nares Strait, as predicted by the AODTM-5 Arctic tide model. Each line shows tidal amplitude at the time of the ERS SAR acquisitions used in this study along longitudinal transects in the three different regions (Fig. 2). The AODTM-5 tide model domain begins 71 km from the grounding line.

acquisition in the Petermann Glacier fjord and the open ocean, from the Hall Basin towards the Kennedy (south) and Robeson (north) Channels in the Nares Strait (Fig. 1). In the open ocean, the AODTM-5 model predicts a tidal range of 1.7 m to the North of the Nares Strait, and a considerably larger range of over 3.6 m to the south (Fig. 5). The range of predicted tide amplitudes is relatively large in the open ocean, with 10 and 15 cm of dispersion in the north and south, respectively. North of the fjord the tidal range decreases with distance, whereas to the south it increases. Within the fjord, the predicted tide amplitudes range from -0.6 to $+1.1$ m, with a low spatial variability of 0.9 cm along each transect, which is measured as the mean standard deviation of the modelled tide amplitude at the time of each SAR acquisition (Fig. 5). Consequently, although the closest available model grid cell in the Petermann Glacier fjord is >70 km away from the floating ice shelf, the spatial separation of the two locations should only account for <1 cm of difference between the modelled and observed vertical displacement.

We compared tidal amplitudes at the AODTM-5 model grid cell closest to the front of the Petermann Glacier; 81.2° N, -62.2° W (Fig. 2) with vertical displacements recorded in the interferometric data (Table 2). Differential tides were computed using

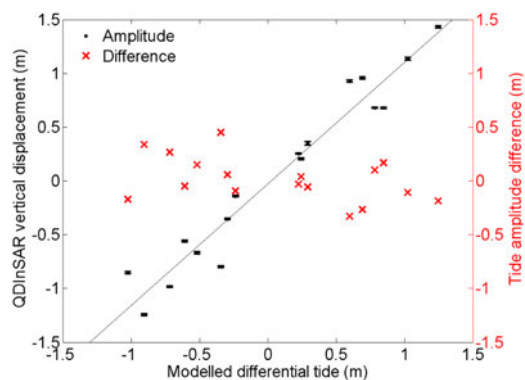
$$\Delta T = (T_2 - T_1) - (T_4 - T_3) \quad (1)$$

as the difference of model tides on the dates and times (Table 1) of each individual SAR acquisition used to produce each quadruple differential interferogram (Table 2). The modelled tide amplitude extracted at the time of each SAR acquisition spans a 1.5 m range from -0.5 to $+1.0$ m; however, at 2.2 m, the range of modelled differential tides is considerably higher (Table 2). This shows that as a result of the differencing technique, the displacement of floating ice recorded in differential interferograms is large relative to the range of absolute tide amplitudes. When the displacement profiles were examined across the width of the grounding zone we did not observe a 'tilt', or across flow bias, in the amplitude of the vertical displacement, although this effect may occur in unexamined regions of the Petermann Glacier floating ice shelf.

We compared the modelled differential tide amplitude with the QDInSAR vertical displacement to assess the degree to which the datasets agree. For this comparison, we used estimates of relative vertical displacement, determined from the interferometric data on the freely floating ice-shelf seaward of the grounding line (Fig. 2). There is a strong ($R^2 = 0.95$) positive correlation between the modelled tidal difference and the relative vertical displacement of the floating ice, with a mean difference of only 16.8 cm and a standard deviation of 20.6 cm (Fig. 6). We estimate that 0.9 cm of this difference is caused by spatial variability of the tide in the 71 km section of the fjord separating the locations of the tidal prediction and the interferometric data, and that 3.7 cm of the difference is caused by error on the interferometric measurement. The remaining difference could arise through errors in the tidal predictions, or through other factors affecting the vertical displacement of the ice shelf – for example atmospheric pressure variations or non-tidal changes in local sea-level height. It is also possible that the Petermann Glacier Ice Shelf is not freely floating in hydrostatic equilibrium with the ocean; however, the

Table 2. Ocean tides predicted by the AODTM-5 Arctic tide model at the time of each SAR image acquisition, the differential tide between the four epochs used to form each quadruple difference interferogram, and the vertical displacement measured in each quadruple difference interferogram

Grounding line ID	Modelled tide 1 (T_1) m	Modelled tide 2 (T_2) m	Modelled tide 3 (T_3) m	Modelled tide 4 (T_4) m	Modelled differential tide (ΔT) m	Observed differential tide (ΔT_{obs}) m
92a	0.59	0.02	0.02	-0.21	-0.34	-0.80
92b	0.02	-0.21	-0.21	0.59	-1.02	-0.86
92c	-0.21	0.59	0.59	1.10	0.29	0.35
92d	0.59	1.10	1.10	0.36	1.25	1.43
92e	1.10	0.36	0.36	-0.14	-0.24	-0.14
92f	0.36	-0.14	-0.14	0.07	-0.72	-0.98
92g	-0.14	0.07	0.07	0.58	-0.30	-0.35
92h	0.07	0.58	0.58	0.87	0.22	0.25
92i	0.58	0.87	0.87	0.56	0.60	0.93
92j	0.56	-0.08	-0.08	-0.11	-0.61	-0.56
92k	-0.08	-0.11	-0.11	0.76	-0.91	-1.24
92l	-0.11	0.76	0.76	0.94	0.69	0.96
95a	0.03	0.38	0.17	0.01	-0.52	-0.67
11a	0.53	0.70	0.70	0.02	0.85	0.68
11b	0.35	0.65	0.65	0.17	0.78	0.68
11c	0.65	0.35	-0.56	0.17	1.02	1.13
11d	0.17	0.65	-0.56	0.17	0.24	0.20

**Fig. 6.** Comparison between ocean tidal amplitude differences determined from the AODTM-5 Arctic tide model (Padman and Erofeeva, 2004), and relative vertical displacement of the Petermann Glacier Ice Shelf determined from quadruple difference interferometry (black points). Error on the QDInSAR vertical displacement measurement is quantified as the maximum range of vertical motion measured on the stable grounded portion of the ice stream. Also shown is the difference (anomaly) between the two measurements (red crosses).

strong correlation between modelled and observed tides suggests that this is the case.

Accurate estimates of ocean tides are required for many glaciological applications, including analysis of ice-shelf thickness changes using satellite altimetry (Shepherd and others, 2003), assessments of ice-sheet mass change using satellite gravimetry (Velicogna and Wahr, 2013), and characterising patterns of ice-shelf basal melting derived from satellite radar interferometry (Joughin and Padman, 2003). Direct observations of ocean tides are, however, sparse, and the certainty of ocean tidal predictions is limited by the paucity of bathymetric data (Padman and others, 2002). These problems are especially pronounced at the ice-sheet margins, which are relatively inaccessible, and which often exhibit rugged and steep bathymetric slopes. Satellite observations have been used to evaluate ocean tide model predictions in such remote and inaccessible regions. For example, in

the Weddell and Amundsen Seas, modelled ocean tidal differences have been shown to deviate from observations of ice-shelf relative displacement by 9 cm, on average (Fricker and Padman, 2002; McMillan and others, 2011). Because there are few floating ice shelves in the northern Hemisphere, an assessment of the utility of Arctic ocean tide models for glaciological applications in this region has been lacking. Our assessment that tides predicted by the AODTM-5 model differ from the observed displacement of the Petermann Glacier floating ice shelf by 16.8 cm, on average, confirms, therefore, that ocean tide models perform comparably well for glaciological applications in the northern Hemisphere as they do in the southern Hemisphere.

4.3. Grounding line migration

We mapped the location of the Petermann Glacier grounding line in all 17 quadruple-difference interferograms (Table 1), producing the most extensive time series assembled at any ice stream to date (Fig. 7). Our results show that between 1991 and 2011 there has been clear movement of the grounding line; however, over the 19 a survey period its relative shape has remained broadly constant, with prominent meanders present in each set of interferometric data. The most distinctive features are the inland-pointing notches on the north-east and south-west margins of the ice stream (Fig. 7), which is in line with observations showing that the ice is thicker towards the centre of the glacier (Joughin and others, 1999), as is the case on other fast flowing ice streams. Although we present a more complete time series of grounding line positions on Petermann Glacier, when the same SAR dataset is used our results are consistent with those from previous studies (Rignot, 1996, 1998a). The furthest inland grounding line positions were measured in February 1992 (92d in Fig. 7) and May 2011 (11b). Relative to these positions, grounding lines recorded at other times are located up to several kilometres downstream, with no obvious progression through time (Fig. 7). The furthest seaward grounding line location was measured in

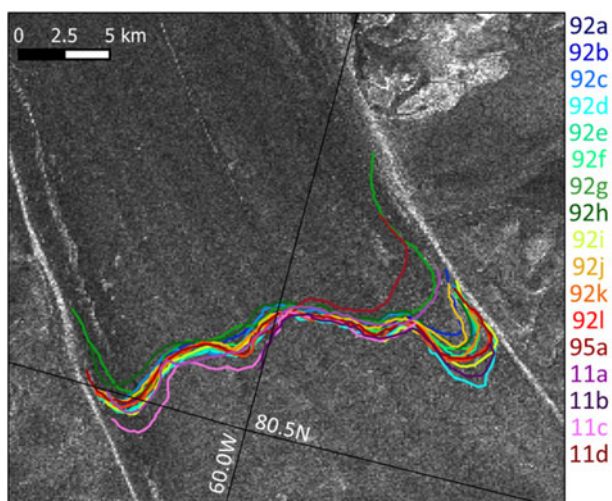


Fig. 7. Petermann Glacier grounding line measured between 1992 (92a) and 2011 (11d). Each coloured curve represents a grounding line produced from quadruple difference interferometry at distinct time periods (Table 1). The background image is an ERS-1 synthetic aperture radar amplitude image acquired in May 2008.

February 1992 (92g, 92h) and June 2011 (11d). The range between the inland and seaward grounding line limit varies across the width of the ice stream, indicating that the grounding lines sensitivity to motion may be influenced by smaller scale, localised processes.

To characterise the spatial variability of the Petermann Glacier grounding line, we measured the relative grounding line position along seven transects (A–G) perpendicular to the grounding zone (Fig. 8). Over the 19 a study period, the mean absolute variability of the grounding line position was 470 m. The range of grounding line motion is smallest in the central sector of the ice stream on transects B–F at <2.3 km, with a much larger range of motion observed on both transects bisecting the south-west (A) and north-east (G) shear margins, of 2.8 and 7.0 km, respectively (Table 3). Of the 7.0 km maximum range, the most inland and seaward positions are measured at -2.1 km and $+4.9$ km respectively, from the mean grounding line position on each transect. Both extremes occurred at the northern edge of the glacier, along transect G, which bisects the broadest section of the grounding zone. Elsewhere, the range (2.8 km) and variability (320 m) of

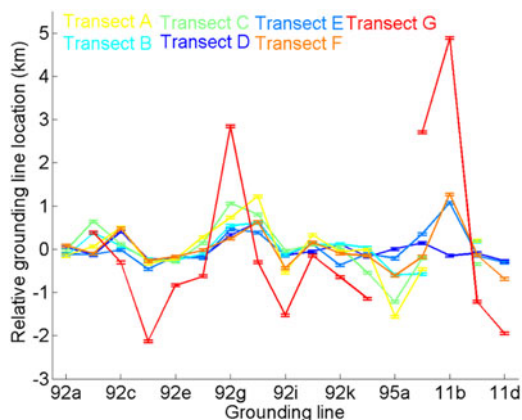


Fig. 8. Distance of grounding line relative to the start of 7 stream-wise transects straddling the Petermann Glacier grounding zone (A–G; Fig. 2) between February 1992 (92a) and June 2011 (11d).

Table 3. Mean absolute variability and range of the grounding line position along all seven transects across the Petermann Glacier grounding zone (Fig. 2)

Transect	Mean absolute variability km	Range km	Migration rate (dx/dt) m a^{-1}	Grounding line position vs time R^2
A	0.4	2.8	23.3	0.4
B	0.3	1.2	14.4	0.4
C	0.4	2.3	20.5	0.3
D	0.2	0.9	10.2	0.03
E	0.3	1.5	14.8	0.1
F	0.3	2.0	17.7	0.005
G	1.4	7.0	75.9	0.2
Total	0.5	2.5	25.2	0.2

The migration rate is calculated for the full 19 a epoch if all of the observed variability is attributed to grounding line retreat, and R^2 shows the statistical significance of the relationship between grounding line position and time.

grounding line positions are considerably lower. This demonstrates that, while the mean grounding line variability is relatively low, this does not preclude large, isolated movements (Fig. 8), thus sparse temporal records should be analysed with care.

We investigated the temporal variability of the Petermann Glacier grounding line position by measuring the mean variability and range of motion along each transect. Transects A–F all exhibit a low mean absolute variability of <470 m in comparison with the anomalously variable north-east shear margin (G), which experiences one order of magnitude larger variability (<1.5 km) (Table 3). However, as the error on the QDInSAR grounding line measurement is just 6% of the mean absolute variability, this suggests that the observed migration is too large to be accounted for by measurement error alone. The results show that there was no lateral shift in the vertical displacement profile across all seven transects (Fig. 4), or an obvious progression of the grounding line location through time (Fig. 7). When we examined the correlation between time and grounding line position the relationship was statistically insignificant on all seven transects (Table 3; Fig. 9), with the highest correlation ($R^2 = 0.4$)

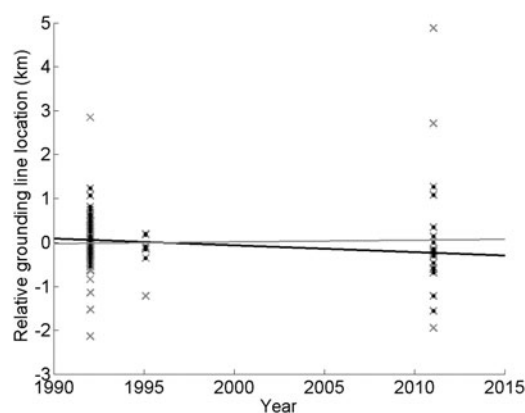


Fig. 9. Change in grounding line position over time between February 1992 (92a) and June 2011 (11d), shown across all seven stream-wise transects (A–G). The correlation between grounding line migration and time is calculated for all transects combined (grey crosses and line), and for all transects excluding transect G, which falls in a particularly variable sector of the Petermann Glacier grounding zone (black crosses and line).

found along transects A and B, and the lowest correlation found on transect F ($R^2 = 0.005$), which lies adjacent to the particularly variable north-east margin. Excluding the highly variable north-east margin (transect G), the mean R^2 correlation between grounding line position and time is 0.22. The statistical significance of the relationship is further reduced when transect G is included in the calculation (Fig. 9), indicating that even large shifts in grounding line position are not temporally dependent. These results suggest that the Petermann Glacier grounding line has remained relatively stable over the past 19 a, despite the occurrence of large calving events (Nick and others, 2012) during the same period.

When the mean absolute grounding line variability across all seven transects is converted to a retreat rate over the full 19 a study period, $<25.2 \text{ m a}^{-1}$ of migration can be said to have occurred. The largest retreat rate of 75 m a^{-1} was recorded along transect G in the variable north-east shear margin, whereas the smallest retreat rate of 10.2 m a^{-1} was recorded along transect D in the central trunk of Petermann Glacier. Although the maximum rate of grounding line retreat observed on Petermann Glacier is in line with Holocene retreat rates of 120 m a^{-1} inferred from the geological record (Conway and others, 1999), it is two orders of magnitude lower than the highest rates observed in regions of contemporary imbalance, such as Pine Island Glacier in West Antarctica (Park and others, 2013). Grounding line retreat rates of a similar magnitude to those observed on Petermann Glacier would be too small to detect in an annual snapshot of data given the lateral precision (30 m) of the QDInSAR technique, reinforcing the importance of long-term data archives for monitoring change.

5. ANALYSIS OF FACTORS AFFECTING GROUNDING LINE MIGRATION

Although a modest secular retreat of the Petermann Glacier grounding line cannot be ruled out, the high variability suggests that other factors are responsible for the majority of its motion. The position of an ice-sheet grounding line is influenced by changes in the ice thickness, in atmospheric pressure, and in ocean tides, and the pattern of any retreat is in turn governed by the bedrock and ice geometry (Thomas, 1984). However, the influence of these factors will vary in space and time. Progressive grounding line retreat has been observed over annual to decadal timescales at the Antarctic Peninsula following ice-shelf collapse (Rack and Rott, 2004), and in West Antarctica through sustained ocean-driven melting (Park and others, 2013). Fluctuations in ocean tides and atmospheric pressure will cause grounding line positions to move over much shorter timescales. For example, at the Filchner-Ronne Ice Shelf, ocean tides are estimated to cause over 130 m change in grounding line position between high and low tide (Smith, 1991). In areas where grounding line migration has been recorded, irregular patterns of movement have occurred. For example, although the Pine Island Glacier grounding line retreated by over 28.4 km between 1992 and 2011, the retreat has been asymmetric and episodic in time due to the presence of a prominent, subglacial bedrock pinning point (Park and others, 2013). Likewise, although the Totten Glacier grounding line retreated by 1–3 km along the south and north lobes between 1996 and 2013, advance was observed in the

central trunk of the ice stream over the same time period (Li and others, 2015).

Because the Petermann Glacier grounding line has migrated forwards and backwards on numerous occasions during our survey period (Fig. 7), it seems likely that a short-term forcing mechanism is responsible. Ignoring the effects of atmospheric pressure changes, which are very small, the main controlling factors on grounding line position are ocean tides and localised changes in ice thickness. We use a simple geometrical relationship (Rignot, 1998b) to simulate these effects on the position of the Petermann Glacier grounding line. In this formulation Eqn (2) grounding line positions (\dot{x}) migrate back and forth with time by following changes in ocean tide (\dot{z}) and ice thickness (\dot{h}), where (\dot{h}) > 0 for thickening, (\dot{x}) > 0 for hinge-line retreat, alpha and beta are the surface and basal slopes respectively, counted positive upward, and ρ_w and ρ_i are the densities of sea water (1027.5 kg m^{-3}) and ice (900 kg m^{-3}), respectively. Migration rates are asymmetrical, with larger migration upstream than downstream (Li and others, 2015; Tsai and Gudmundsson, 2015) and further details can be found in Tsai and Gudmundsson (2015). Using this relationship, changes in grounding line position associated with changes in tide and ice thickness can be simulated.

$$\dot{h} - \left(\frac{\rho_w}{\rho_i}\right)\dot{z} = \begin{cases} \left[\alpha - \beta\left(1 - \frac{\rho_w}{\rho_i}\right)\right]\dot{x}, & \text{if } \dot{x} < 0, \\ \left[\left(\frac{\rho_i}{\rho_w - \rho_i}\right)\alpha - \beta\right]\dot{x}, & \text{if } \dot{x} > 0. \end{cases} \quad (2)$$

To estimate the surface and bedrock slopes, and the potential size of short-term fluctuations in glacier thickness, we used geometry data acquired along two stream-wise profiles of the Petermann Glacier in 2010 by the NASA Operation Ice Bridge Airborne Topographic Mapper (ATM) lidar and Multichannel Coherent Radar Depth Sounder (MCoRDS) (Allen, 2013) (Fig. 10). Although the ice-surface elevation is similar along both flight lines, there are large differences in the elevation of the ice base (Fig. 10). Along the western flight-line, there is an abrupt 420 m change in the elevation of the glacier base over a 2.6 km distance, in sharp contrast to the eastern flight-line where the step is only 75 m over a similar distance (Fig. 10a, b). The MCoRDS instrument detects the ice/bedrock interface on the grounded portion of the ice stream and the ice/ocean interface on the ice shelf, assuming re-frozen marine ice is not present, therefore the ice base only represents the bedrock topography inland of the grounding line. We calculated ice surface and bedrock slopes along a 4.4 km section (the mean width of the flexure zone) of each flight-line centred on the most inland grounding line position measured from the interferometric data (Fig. 10). Using these data, the estimated ice surface (α) and bedrock (β) slopes from the western flight-line are 0.83 and -0.11% respectively, and from the eastern flight-line they are 0.94 and 0.42%, respectively.

Given that such a strong relationship exists between ice-shelf vertical displacement and ocean tides at Petermann Glacier (Fig. 6), we conclude that the floating tongue is in hydrostatic equilibrium with the surrounding ocean, meaning that the grounding line position ought to be sensitive to short-term changes in the ocean tides. We simulated the degree of tidally induced grounding line migration by scaling estimates of the differential tide (\dot{z}) derived from

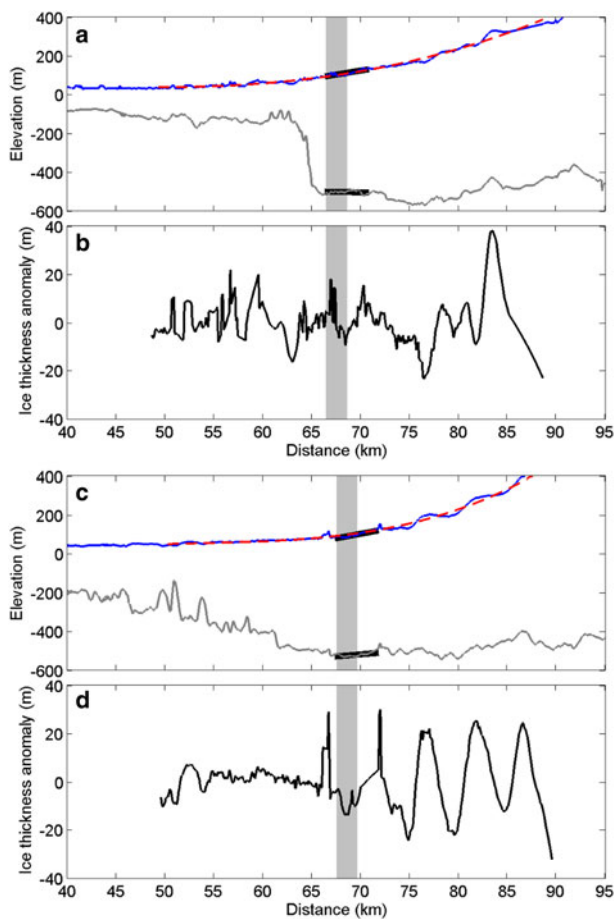


Fig. 10. Ice surface (blue curve) and ice bottom (grey curve) elevation measured along adjacent western (a) and eastern (c) stream-wise profiles of the Petermann Glacier (Fig. 2). The spread of grounding line positions measured in this study are highlighted (grey shaded area). We also show regions over which the surface and bedrock slopes are computed (thick black curve), and a polynomial fit (red dashed curve) to the ice-surface elevation from which ice thickness anomalies (b) and (d) in the vicinity of the grounding zone are calculated.

the AODTM-5 Arctic tide model (Table 2) by the tidal migration factors for each flight line. Based on the maximum simulated differential tide (4.4 m), we estimate that the Petermann Glacier experiences up to 560 m of tidally-induced grounding line motion. For comparison, this range of tidally-induced grounding line motion is approximately three times smaller than at the Pine Island Glacier in West Antarctica (Rignot, 1998b), where the bedrock slope, in particular, is more pronounced. The average simulated tidally-induced relative grounding line motion of the Petermann Glacier at the epochs of our QDInSAR survey was 45 and 38 m along the western and eastern flight-lines, respectively. By comparison, the mean actual grounding line variability measured along transects D and E adjacent to each flight-line (Fig. 2) was 193 and 281 m, respectively. We conclude, therefore, that ocean tides are responsible for only a small fraction (18% on average) of the observed grounding line movement.

Because the Petermann Glacier grounding line movement has been irregular in space (Fig. 7), it is possible that it has arisen through temporal changes in ice thickness. Such changes can be due to localised variations in the thickness of ice that is advected downstream, or temporal variations

in the rate of basal melting. In the absence of detailed information on rates of basal ice melting, we examined the evidence for changes in inland ice thickness over time. Although there is some evidence for modest long-term change in dynamic ice thickness (0.15 m a^{-1}) on Petermann Glacier (Pritchard and others, 2009), given the geometrical configuration, these changes would not induce substantial grounding line motion. However, previous studies (Rignot and Steffen, 2008) have shown that there are large ($\pm 25 \text{ m}$) stream-wise fluctuations in the thickness of the floating section (Fig. 10), which could potentially influence the location of the grounding line if they are advected downstream. To assess their potential impact, we characterised the ice thickness variations on Petermann Glacier by computing the ice thickness anomaly from the difference between the mean polynomial fit to the ice-surface elevation profiles within a 40 km region centred on the 2011 grounding line (Fig. 10). The mean absolute variability was 7.1 and 8.1 m along the western and eastern flight-lines respectively, with a combined range of 61.7 m. Ice thickness changes of this magnitude would lead to 490 m of grounding line motion – 2 to 3 times the observed variability – if they were to affect the glaciers hydrostatic balance.

Tidally-induced motion is too small to account for the range of grounding line migration observed on Petermann Glacier (Fig. 8). Moreover, when applied as a correction to the grounding line position, the simulated tidal motion does not reduce the variance in the observed grounding line position, suggesting that ocean tides are not the dominant cause of grounding line variability on Petermann Glacier. While localised ice thickness change may not fully translate into change in grounding line position due to the effect of lateral support from surrounding ice, the motion attributed to the range of ice thickness anomalies is greater than the observed mean grounding line variability and therefore may be sufficiently large to account for all the observed motion. Other factors, such as a change, or spatial variability in the basal boundary conditions, may have also modulated the grounding line position; however, new observations or a dedicated modelling study would be required to investigate this further. It is unclear what process has driven the relatively large shifts in grounding line position that have occurred at the glaciers north-east shear margin. Alternative causal mechanisms, such as adverse snow loading on the floating section or atmospheric pressure variations, are unlikely to exhibit spatial variability over scales small enough to induce such changes. In consequence, short-term changes in ice thickness remain the most likely cause of the observed grounding line motion.

6. CONCLUSIONS

We have used interferometric synthetic aperture radar data to create map the Petermann Glacier grounding line position on 17 occasions between 1992 and 2011. This dataset is the most comprehensive record of grounding line position for an ice stream to date. Using these data, we have been able to assess the ability of the AODTM-5 Arctic ocean tide model to simulate differential tides, despite the landward extent of the model domain ending 71 km from the grounding line. The RMS difference between the observed and modelled differential tides is 20.6 cm, $\sim 5\%$ of the tidal range in the Nares Strait, indicating that AODTM-5 provides reliable predictions in this region. Between 1992 and 2011, the

Petermann Glacier grounding line advanced and retreated on numerous occasions and, while the average movement was just 470 m over the 19 a period, the range of grounding line positions spanned a 7.0 km distance. We conclude, therefore, that the Petermann Glacier is dynamically stable, consistent with observations of only modest changes in the thickness of the grounded ice inland (Pritchard and others, 2009), though in contrast to several ice streams on the south-west coast of Greenland (Moon and others, 2012; Joughin and others, 2014).

Assuming that the Petermann Glacier is in a state of hydrostatic balance, only a small proportion (18%) of the observed variation in grounding line position can be attributed to the influence of ocean tides. We conclude, therefore, that short-term changes in ice thickness are the likely source of grounding line motion. Although the glacier thickness is sufficiently variable to drive these changes, there is insufficient data to determine whether these changes are advected downstream and whether they affect the glaciers hydrostatic balance. Further work is required to characterise the range of short term grounding line motion exhibited on different ice streams, which should enable a more robust understanding of the physical mechanisms driving change to be achieved.

Although the technique of QDInSAR provides a precise estimate of ice-shelf tidal motion (to within 3.7 cm, on average) and of grounding line position (to within 30 m, on average), our analysis suggests that short-term fluctuations in grounding line position can be large (470 m on average). The impact of such changes should be taken into account when assessing grounding line migration over time; for example, had our survey consisted of measurements acquired in 1992 and 2011 only, the change in grounding line position could have been misinterpreted as a 2.3 km retreat across the main trunk of Petermann Glacier – 4.8 times larger than the mean variability (470 m) based on the entire 19 a dataset. Moreover, at Petermann Glacier the degree of grounding line motion associated with ocean tides and changes in ice thickness is relatively small when compared with other locations (Padman and others, 2002; McMillan and others, 2014), and so the impact of short-term variations may be even larger elsewhere. To overcome this problem, grounding line positions should be monitored on multiple occasions when attempting to quantify rates of migration over time.

ACKNOWLEDGEMENTS

This work was jointly funded by a NERC studentship, a European Space Agency (ESA) Young Graduate Trainee (YGT) position, and by the ESA ice sheets Climate Change Initiative (CCI) project. We thank ESA for acquiring and supplying the satellite dataset, which formed the basis of this study. ERS data was provided by the C1P.9925 project. We acknowledge the use of data and/or data products from CReSIS generated with support from NSF grant ANT-0424589 and NASA grant NNX10AT68G.

REFERENCES

Allen C (2013) *IceBridge MCoRDS L3 gridded ice thickness, Surface, and Bottom, Version 2, Petermann_2010_2012_Composite*. NASA DAAC at the National Snow and Ice Data Center, Boulder, Colorado, USA.

- Bindschadler R and 17 others (2011) Getting around Antarctica: new high-resolution mappings of the grounded and freely-floating boundaries of the Antarctic ice sheet created for the International Polar Year. *Cryosphere*, **5**, 569–588 (doi: 10.5194/tc-5-569-2011)
- Church JA and 13 others (2013) Sea Level Change, In: *Climate change 2013: the physical science basis. Contribution of working group I to the fifth assessment report of the intergovernmental panel on climate change*. Stocker TF and 9 others eds. Cambridge University Press, Cambridge, United Kingdom and New York, NY, USA
- Conway H, Hall BL, Denton GH, Gades AM and Waddington ED (1999) Past and future grounding line retreat of the West Antarctic ice sheet. *Science*, **286**, 280–283 (doi: 10.1126/science.286.5438.280)
- Fricker HA and Padman L (2002) Tides on Filchner-Ronne ice shelf from ERS radar altimetry. *Geophys. Res. Lett.*, **29**, 12 (doi: 10.1029/2001GL014175)
- Fricker HA and Padman L (2006) Ice shelf grounding zone structure from ICES at laser altimetry. *Geophys. Res. Lett.*, **33**, L15502 (doi: 10.1029/2006GL026907)
- Goldstein RM, Zebker HA and Werner CL (1988) Satellite radar interferometry: two-dimensional phase unwrapping. *Radio Sci.*, **23**(4), 713–720 (doi: 10.1029/RS023i004p00713)
- Goldstein RM, Engelhardt H, Kamb B and Frolich RM (1993) Satellite radar interferometry for monitoring ice sheet motion: application to an Antarctic ice stream. *Science*, **262**, 1525–1530 (doi: 10.1126/science.262.5139.1525)
- Johnson HL, Münchow A, Falkner KK and Melling H (2011) Ocean circulation and properties in Petermann Fjord, Greenland. *J. Geophys. Res.*, **116**, C01003 (doi: 10.1029/2010JC006519)
- Joughin I and Padman L (2003) Melting and freezing beneath Filchner-Ronne ice shelf, Antarctica. *Geophys. Res. Lett.*, **30**(9), 1477 (doi: 10.1029/2003GL016941)
- Joughin I, Fahnestock M, Kwock R, Gogineni P and Allen C (1999) Ice flow of Humboldt, Petermann and Ryder Gletscher, northern Greenland. *J. Glaciol.*, **45**(150), 231–241 (doi: 10.3189/002214399793377284)
- Joughin I, Smith BE and Holland DM (2010) Sensitivity of 21st century sea level to ocean-induced thinning of Pine Island Glacier, Antarctica. *Geophys. Res. Lett.*, **37**, L20502 (doi: 10.1029/2010GL044819)
- Joughin I, Smith BE, Shean DE and Floricioiu D (2014) Brief communication: further speedup of Jakobshavn Isbrae. *Cryosphere*, **8**, 209–214 (doi: 10.5194/tc-8-209-2014)
- Li X, Rignot E, Morlighem M, Mouginot J and Scheuchl B (2015) Grounding line retreat of Totten Glacier, East Antarctica, 1996 to 2013. *Geophys. Res. Lett.*, **42**, 8049–8056 (doi: 10.1002/2015GL065701)
- McMillan M, Shepherd A, Nienow P and Leeson A (2011) Tide model accuracy in the Amundsen Sea, Antarctica, from radar interferometry observations of ice shelf motion. *J. Geophys. Res.*, **116** (doi: 10.1029/2011JC007294)
- McMillan M and 7 others (2014) Increased ice losses from Antarctica detected by CryoSat-2. *Geophys. Res. Lett.*, **41**, 3899–3905 (doi: 10.1002/2014GL060111)
- Moon T, Joughin I, Smith B and Howat I (2012) 21st – Century evolution of Greenland outlet glacier velocities. *Science*, **336**, 576 (doi: 10.1126/science.1219985)
- Munchow A, Padman L and Fricker HA (2014) Interannual changes of the floating ice shelf of Petermann Gletscher, North Greenland, from 2000 to 2012. *J. Glaciol.*, **60**, 221 (doi: 10.3189/2014JoG13J135)
- Nick FM and 8 others (2012) The response of Petermann Glacier, Greenland, to large calving events, and its future stability in the context of atmospheric and oceanic warming. *J. Glaciol.*, **58**, 208 (doi: 10.3189/2012JoG11J242)
- Nick FM and 6 others (2013) Future sea-level rise from Greenland's main outlet glaciers in a warming climate. *Nature*, **497**, 235–238 (doi: 10.1038/nature12068)

- Padman L and Erofeeva S (2004) A barotropic inverse tidal model for the Arctic Ocean. *Geophys. Res. Lett.*, **31**, L02303 (doi: 10.1029/2003GL019003)
- Padman L, Fricker HA, Coleman R, Howard S and Erofeeva L (2002) A new tide model for the Antarctic ice shelves and seas. *Ann. Glaciol.*, **34**, 247–254 (doi: 10.3189/172756402781817752)
- Park JW and 5 others (2013) Sustained retreat of the Pine Island Glacier. *Geophys. Res. Lett.*, **40**, 2137–2142 (doi: 10.1002/grl.50379)
- Pritchard HD, Arthern RJ, Vaughan DG and Edwards LA (2009) Extensive dynamic thinning on the margins of the Greenland and Antarctic Ice sheets. *Nature*, **461**, 971–975 (doi: 10.1038/nature08471)
- Rack W and Rott H (2004) Pattern of retreat and disintegration of the Larsen B ice shelf, Antarctic Peninsula. *Ann. Glaciol.*, **39**, 505–510 (doi: 10.3189/172756404781814005)
- Rignot E (1996) Tidal motion, ice velocity and melt rate of Petermann Gletscher, Greenland, measured from radar interferometry. *J. Glaciol.*, **42**(142), 476–485 (doi: 10.3198/1996JG42-142-476-485)
- Rignot E (1998a) Hinge-line migration of Petermann Gletscher, North Greenland, detected using satellite-radar interferometry. *J. Glaciol.*, **44**(148), 469–476 (doi: 10.3198/1998JG44-148-469-476)
- Rignot E (1998b) Fast Recession of a West Antarctic Glacier. *Science*, **281**, 549–551 (doi: 10.1126/science.281.5376.549)
- Rignot E and Steffen K (2008) Channelized bottom melting and stability of floating ice shelves. *Geophys. Res. Lett.*, **35**, L02503 (doi: 10.1029/2077GL031765)
- Rignot E and 5 others (2004) Accelerated ice discharge from the Antarctic Peninsula following the collapse of Larsen B ice shelf. *Geophys. Res. Lett.*, **31**, L18401 (doi: 10.1029/2004GL020697)
- Rignot E, Mouginot J, Morlighem M, Seroussi H and Scheuchl B (2014) Widespread, rapid grounding line retreat of Pine Island, Thwaites, Smith and Kohler glaciers, West Antarctica. *Geophys. Res. Lett.*, **41**, 3502–3509 (doi: 10.1002/2014GL060140)
- Rosich B, Meadows PJ, Schättler B, Grion M and Emiliani G (2001) The ERS-2 mono-gyro and extra backup piloting modes: Impact on SAR performance, presented at the CEOS Workshop, Tokyo, Japan, April 2–5, 2001.
- Rott H, Skvarca P and Nagler T (1996) Rapid collapse of Northern Larsen Ice Shelf, Antarctica. *Science*, **271**(5250), 788–792 (doi: 10.1126/science.271.5250.788)
- Rosier SHR, Gudmundsson GH and Green JA (2015) Temporal variations in the flow of a large Antarctic ice stream controlled by tidally induced changes in the subglacial water system. *Cryosphere*, **9**, 1649–1661 (doi: 10.5194/tc-9-1649-2015)
- Scambos TA, Hulbe C, Fahnestock M and Bohlander J (2000) The link between climate warming and break-up of ice shelves in the Antarctic Peninsula. *J. Glaciol.*, **46**(154), 516–530 (doi: 10.3189/172756500781833043)
- Scambos TA, Haran TM, Fahnestock MA, Painter TH and Bohlander J (2007) MODIS-based Mosaic of Antarctica (MOA) data sets: continent-wide surface morphology and snow grain size. *Remote Sens. Environ.*, **111**, 242–257 (doi: 10.1016/j.rse.2006.12.020)
- Scharroo R and Visser P (1998) Precise orbit determination and gravity field improvement for the ERS satellites. *J. Geophys. Res.*, **103**(C4), 8113–8127 (doi: 10.1029/97JC03179)
- Schoof C (2007) Ice sheet grounding line dynamics: steady states, stability and hysteresis. *J. Geophys. Res.*, **112** (doi: 10.1029/2006JF000664)
- Shepherd A, Wingham D, Payne T and Skvarca P (2003) Larsen ice shelf has progressively thinned. *Science*, **302**(5646), 856–859 (doi: 10.1126/science.1089768)
- Shepherd A and 45 others (2012) A reconciled estimate of ice-sheet mass balance. *Science*, **338**, 1183–1189 (doi: 10.1126/science.1228102)
- Smith AM (1991) The use of tilt meters to study the dynamics of Antarctic ice-shelf grounding lines. *J. Glaciol.*, **37**(125), 51–58 (doi: 10.3198/1991JG37-125-51-59)
- Thomas RH (1984) Ice sheet margins and ice shelves. *AGU Geophys. Monograph Ser.: Clim. Process. Clim. Sensitivity*, **29**, 265–274 (doi: 19850042373)
- Tsai V and Gudmundsson GH (2015) An improved model for tidally modulated grounding-line migration. *J. Glaciol.*, **61**(226), 216–222 (doi: 10.3189/2015JG14J152)
- Vaughan DG (1995) Tidal flexure at ice shelf margins. *J. Geophys. Res.*, **100**(B4), 6213–6224 (doi: 10.1029/94JB02467)
- Velicogna I and Wahr J (2013) Time-variable gravity observations of ice sheet mass balance: precision and limitations of the GRACE satellite data. *Geophys. Res. Lett.*, **40**, 3055–3063 (doi: 10.1002/grl.50527)

MS received 16 February 2016 and accepted in revised form 8 June 2016; first published online 9 September 2016