

Singapore Management University

Institutional Knowledge at Singapore Management University

Research Collection School Of Information
Systems

School of Information Systems

8-2017

GraphH: High performance big graph analytics in small clusters

Peng SUN

Yonggang WEN

Nguyen Binh Duong TA
Singapore Management University, donta@smu.edu.sg

Xiaokui XIAO

Follow this and additional works at: https://ink.library.smu.edu.sg/sis_research



Part of the [Numerical Analysis and Scientific Computing Commons](#), and the [Software Engineering Commons](#)

Citation

SUN, Peng; WEN, Yonggang; TA, Nguyen Binh Duong; and XIAO, Xiaokui. GraphH: High performance big graph analytics in small clusters. (2017). *Proceedings of the 2017 IEEE International Conference on Cluster Computing (CLUSTER), Honolulu, USA, September 5-8*. 1-11. Research Collection School Of Information Systems.

Available at: https://ink.library.smu.edu.sg/sis_research/4765

This Conference Proceeding Article is brought to you for free and open access by the School of Information Systems at Institutional Knowledge at Singapore Management University. It has been accepted for inclusion in Research Collection School Of Information Systems by an authorized administrator of Institutional Knowledge at Singapore Management University. For more information, please email liblR@smu.edu.sg.

GraphH: High Performance Big Graph Analytics in Small Clusters

Peng Sun, Yonggang Wen, Ta Nguyen Binh Duong and Xiaokui Xiao
School of Computer Science and Engineering, Nanyang Technological University, Singapore
 {sunp0003, ygwen, donta, xkxiao}@ntu.edu.sg

Abstract—It is common for real-world applications to analyze big graphs using distributed graph processing systems. Popular in-memory systems require an enormous amount of resources to handle big graphs. While several out-of-core approaches have been proposed for processing big graphs on disk, the high disk I/O overhead could significantly reduce performance. In this paper, we propose GraphH to enable high-performance big graph analytics in small clusters. Specifically, we design a two-stage graph partition scheme to evenly divide the input graph into partitions, and propose a GAB (Gather-Apply-Broadcast) computation model to make each worker process a partition in memory at a time. We use an edge cache mechanism to reduce the disk I/O overhead, and design a hybrid strategy to improve the communication performance. GraphH can efficiently process big graphs in small clusters or even a single commodity server. Extensive evaluations have shown that GraphH could be up to 7.8x faster compared to popular in-memory systems, such as Pregel+ and PowerGraph when processing generic graphs, and more than 100x faster than recently proposed out-of-core systems, such as GraphD and Chaos when processing big graphs.

Keywords-Graph Processing, Distributed Computing System, Network

I. INTRODUCTION

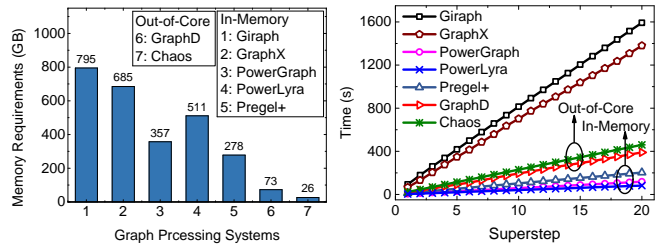
Many distributed graph processing systems have been proposed to tackle general graph analytics in memory. They usually follow the “think like a vertex” philosophy, and abstract graph computation as vertex-centric programs. More specifically, Pregel [1], Giraph [2], Pregel+ [3], GPS [4], MOCGraph [5] and HuSky [6] adopt the Pregel computation model: they assign the input graph’s vertices to multiple machines, and provide interaction between vertices by message passing along out-edges. PowerGraph [7], PowerLyra [8], GraphX [9] and LFGGraph [10] use the GAS (Gather-Apply-Scatter) model: they split a vertex into multiple replicas, and parallelize the computation for a single vertex in different machines. Many benchmarking results have shown that these systems could offer better performance than general-purpose systems like Hadoop and Spark [11], [12], [13].

Aforementioned in-memory approaches require powerful computation resources to process and analyze big graphs¹, neglecting the need of average users who cannot afford a large cluster. During the computation, these systems need to

¹A big graph usually contains billions of vertices or hundreds of billions of edges.

Table I: Benchmark Graph Datasets.

Graphs	Vertex Num	Edge Num	Avg Deg	Max Indeg	Max Outdeg	Size (CSV)
Twitter-2010	42M	1.5B	35.3	0.7M	770K	25GB
UK-2007	134M	5.5B	41.2	6.3M	22.4K	93GB
UK-2014	788M	47.6B	60.4	8.6M	16.3K	0.9TB
EU-2015	1.1B	91.8B	85.7	20M	35.3K	1.7TB



(a) Memory Requirements (UK-2007)

(b) Execution Time (UK-2007)

Figure 1: Memory requirements and execution time for running PageRank on UK-2007 with various distributed graph processing systems. The testbed has 9 servers, and each server contains 12x2.0GHz cores (two Intel Xeon E5-2620 CPUs), 128GB memory, 4x4TB HDDs (RAID5) and 10Gbps Ethernet. We use Giraph-1.1, GraphX-2.0, PowerGraph-2.2 and the newest version of PowerLyra (hybrid-ginger mode), Pregel+, GraphD and Chaos.

store the entire input graph and all network-transmitted messages in memory. This strategy is appropriate when processing generic graphs with a few billion edges, such as Twitter-2010 and UK-2007 as shown in Table I. Unfortunately, it is common for real-world applications to process and analyze big graphs like UK-2014 and EU-2015, which are orders of magnitude larger than Twitter-2010 for example. In this case, the input graph and intermediate messages can easily exceed the memory limit of a small-scale cluster, leading to significant performance degradation or even program crashes. We evaluated the memory requirement for running PageRank on UK-2007 with five in-memory graph processing systems in a 9-node cluster. As shown in Figure 1 (a), Giraph, GraphX, PowerGraph, PowerLyra and Pregel+ need 795GB, 685GB, 357GB, 511GB and 281GB memory, indicating 8.5x, 7.3x, 3.8x, 5.5x and 2.9x memory explosions with respect to the input graph’s size. To process big graphs like EU-2015, these in-memory approaches require a large cluster with at least 5TB memory, approximately.

Researchers have proposed several out-of-core systems to enable big graph analytics with limited memory. Specifically, single-node systems, such as GraphChi [14], VENUS [15],

Table II: A Comparison of Different Distributed Graph Processing Systems.

	In-Memory	Out-of-Core	Hybrid
Distributed Graph Processing System	Pregel, Pregel+, Giraph, GPS, MOCGraph, HuSky GraphX, LFGraph, PowerGraph, PowerLyra	GraphD, Chaos	GraphH (<i>Our Approach</i>)
In Memory Data	All Vertex States, Edges & Messages	(Part) Vertex States	All Vertex States & Messages, Cached Edges
Required Platform	Large-Scale Clusters or Supercomputers	Small Commodity Clusters	Small Commodity Clusters
Performance	High (no disk I/O during computation)	Low (frequent disk I/O)	High (reduce disk I/O by cache)

X-Stream [16] and GridGraph [17], can process big graphs from secondary storage on a single server. GraphD [18] and Chaos [19] could scale out-of-core graph processing to multiple servers in a cluster. These out-of-core systems typically maintain vertices in memory, and manage edges/messages on disks to reduce memory footprint. As shown in Figure 1 (a), GraphD and Chaos use 73GB and 26GB memory to run PageRank on UK-2007, respectively. Both systems can process UK-2014 and EU-2015 in a 9-node cluster.

However, existing out-of-core systems could incur a huge amount of disk accesses, resulting in significant performance reduction. As shown in Figure 1 (a), while each server has 128GB memory, GraphD and Chaos only use 8GB and 3GB memory per server respectively, and cannot efficiently leverage idle memory to reduce disk I/O overhead. Thus, out-core systems usually have much lower performance than most in-memory systems. As shown in Figure 1 (b), PowerGraph, PowerLyra and Pregel+ outperform GraphD by 3.3x, 4.8x, and 1.9x, and outperform Chaos by 3.8x, 5.6x and 2.2x, when running PageRank on UK-2007. Giraph and GraphX have lower performance than GraphD and Chaos, since they are implemented based on general-purpose Hadoop and Spark, which lack some graph specific optimizations.

We propose a new distributed graph processing system named GraphH to enable high-performance big graph analytics in small clusters. GraphH is a memory-disk hybrid approach, which does not require storing all data in memory, but maximizes the amount of in-memory data. To achieve this goal, GraphH employs three techniques: 1) **Two-Stage Graph Partitioning**. GraphH performs graph partitioning in two stages. In the first stage, GraphH evenly divides the graph into a set of tiles, each of which uses a compact data structure to organize assigned edges. In the second stage, GraphH uniformly assigns tiles to computation servers for running vertex-centric programs. 2) **GAB (Gather-Apply-Broadcast) Computation Model**. GraphH uses GAB to represent distributed out-of-core graph computation. During the computation, each vertex maintains a replica on all servers², and each computation worker loads a tile into memory for processing at a time. GraphH uses three functions to update a vertex: *Gather* data along in-edges from local memory to

² A typical commodity server can easily fit all vertices in memory. Take PageRank as an example, EU-2015 needs 21GB memory to store all rank values, out-degrees and intermediate messages in a single node. Meanwhile, each server has 128GB memory in our testbed, and has 256GB memory in [20],[21]. A single EC2 M4 instance can have up to 256GB memory.

compute an accumulator, *Apply* the accumulator to the target vertex, and *Broadcast* new vertex values to other servers. 3) **Edge Cache Mechanism**. We build an edge cache system to leverage idle memory to reduce disk I/O overhead.

We implement GraphH using C++, MPI, OpenMP, and ZMQ. MPI is used to parallelize vertex-centric computation across multiple servers. OpenMP parallelizes the computation across multiple CPU cores of a single server. To improve the communication performance, we use ZMQ to implement a broadcast interface instead of using MPI_Bcast. Extensive valuations showed that GraphH performs better than existing distributed in-memory and out-of-core systems: 1) When processing generic graphs like Twitter-2010, GraphH outperforms Giraph, GraphX, PowerGraph, PowerLyra and Pregel+ by up to 7.8x. 2) When processing big graphs like EU-2015, GraphH outperforms GraphD and Chaos by at least 100x. 3) GraphH’s memory management strategy is efficient, it can process big graphs like EU-2015 even on a single commodity server without disk I/O accesses. GraphH is available at <https://github.com/cap-ntu/GraphH>.

The rest of the paper is structured as follows. In section II, we present the background of distributed graph processing. Section III describes GraphH system design and implementation details. Section IV shows three performance optimization techniques. The evaluation results are detailed in Section V. Section VI concludes the paper.

II. BACKGROUND: DISTRIBUTED GRAPH PROCESSING

Pregel and GAS are two widely-used vertex-centric models to represent distributed graph processing. In this section, we review 2 in-memory systems (Pregel+ and PowerGraph) and 2 out-of-core systems (GraphD and Chaos). Pregel+ and GraphD are designed based on the Pregel model. PowerGraph and Chaos adopt the GAS model.

A. Notations

The input graph $G = (V, E)$ has $|V|$ vertices and $|E|$ edges. All graphs are directed graphs in this paper, and it is easy to map an undirected graph to a directed graph. Each vertex $v \in V$ has a unique ID $id(v)$, an incoming adjacency list $\Gamma_{in}(v)$ and an outgoing adjacency list $\Gamma_{out}(v)$. Vertex v maintains a value $val(v)$, which may be updated during the computation, and a boolean field $active(v)$ indicating whether v is active or halted. The in-degree and out-degree of v are denoted by $d_{in}(v)$ and $d_{out}(v)$, where $d_{in}(v) = |\Gamma_{in}(v)|$ and $d_{out}(v) = |\Gamma_{out}(v)|$. If a vertex $u \in \Gamma_{in}(v)$,

there is an edge $(u, v) \in E$. In this case, (u, v) is an in-edge of v , and u is an incoming neighbor of v . Similarly, if $u \in \Gamma_{out}(v)$, (v, u) is an out-edge of v , and u is an outgoing neighbor of v . Let $val(u, v)$ denote the edge value of (u, v) . If G is a unweighted graph, $val(u, v) = 1, \forall (u, v) \in E$. The vertex state of v , denoted by $state(v)$, contains different components in various systems. To be consistent, we define $state(v)$ as follows:

$$state(v) = (id(v), val(v), d_{out}(v), d_{in}(v), active(v)). \quad (1)$$

B. Graph Partitioning

Before the vertex-centric computation, a distributed graph processing system first divides the input graph into partitions, and assigns them to N servers. Figure 2 shows the graph partitioning strategies used in Pregel+, PowerGraph, GraphD and Chaos.

1) **Hash-based Edge-Cut Graph Partitioning:** Pregel+ and GraphD use a hash function to assign vertex v and its outgoing adjacency list $\Gamma_{out}(v)$ to a server, and provide interaction between vertices along out-edges. Each server approximately maintains $|V|/N$ vertex states in memory. To enable in-memory computation, Pregel+ maintains $\Gamma_{out}(v)$ in memory, so it requires additional memory to store $|E|$ edges during the computation. As a comparison, GraphD stores $\Gamma_{out}(v)$ on disks to reduce memory footprint during the computation. This hash-based edge-cut graph partitioning strategy can evenly distribute vertices among servers, but cannot balance workloads when processing skewed graphs, since high-degree vertices need more execution time [7], [8].

2) **Intelligent Vertex-Cut Graph Partitioning:** PowerGraph could evenly assign $|E|$ edges to N servers to improve workload balance. Specifically, if a server has edge (u, v) , it also maintains $state(u)$ and $state(v)$ in memory. A single vertex may have multiple replicas on different servers. For example, both server-A and server-B in Figure 2 (b) maintain a replica of vertex-1. Since PowerGraph requires each vertex v to be aware of $\Gamma_{in}(v)$ and $\Gamma_{out}(v)$, it needs double spaces to store an edge, which is indexed by its source and target vertex separately. Therefore, PowerGraph maintains $M|V|$ vertex states and $2|E|$ edges in memory, where M is the average vertex replication factor. To reduce the storage and communication overhead, many intelligent vertex-cut methods have been proposed to reduce the value of M in PowerGraph and other GAS-based systems [7], [8].

3) **Streaming Partitioning:** Chaos divides the input graph into P streaming partitions, and store them on disks. Each partition consists of a set of vertices along with their out-edges and received messages. All edges with the same source vertex appear in a single partition, and they are not required to be sorted or grouped. During the computation, each server processes a streaming partition at a time: it loads the vertices into memory and streams other data from disks. Therefore, each server only needs to maintain $|V|/P$ vertex states in

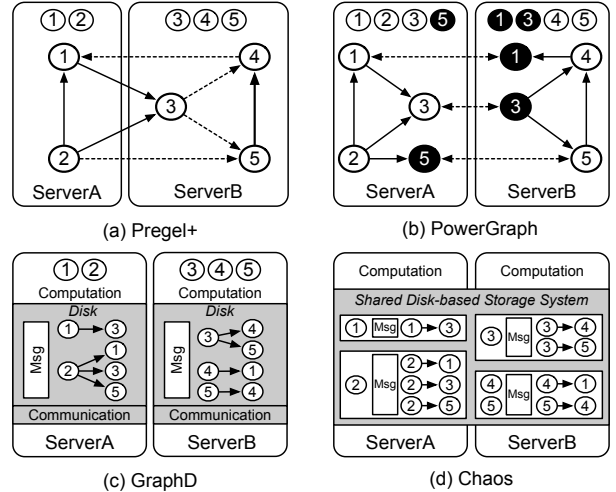


Figure 2: Graph partitioning strategies used in Pregel+, PowerGraph, GraphD and Chaos. In (a)(c), vertices are distributed to different servers based on a hash function. In (b), the black cycle denotes a vertex replica.

memory. Chaos does not manage a streaming partition on a single server. Instead, it spreads all data of a single partition over all servers in the cluster uniformly and randomly.

C. Computation Engine & Programming Abstraction

Pregel+ and GraphD follow the Pregel computation model to process input graphs. PowerGraph uses the GAS model to optimize the processing of skewed graphs. Chaos designs an edge-centric GAS model to represent distributed out-of-core graph processing.

1) **Pregel:** A Pregel program processes the input graph in supersteps. In each superstep, all active vertices execute a user-defined function $compute(msgs)$ to update their values, then send messages along its out-edges, and vote to halt. A halted vertex will be reactivated if it receives messages from other vertices. The program terminates when there are no active vertices. To reduce the communication overhead, Pregel+ and GraphD can combine messages with the same target vertex into a single one. Take PageRank as an example, after message combining, Pregel+ stores $\eta|E|$ and $|V|$ messages in memory at sender and receiver side respectively, where $0 < \eta \leq 1$ is the combining ratio³. GraphD stores $|E|$ messages on disk at sender side, sends $\eta|E|$ messages over network after message combining, and digests all incoming messages in a small memory buffer.

2) **GAS:** GAS represents vertex-centric computation with three phases: *gather*, *apply* and *scatter*. During the *gather* phase, each active vertex collects information along its in-edges to compute an accumulator. Since a single vertex may

³Pregel+ and GraphD only combine messages managed by the same worker. According to [1], [22], $\eta \approx (1 - \exp(-\frac{d_{avg}}{TN})) \frac{TN}{d_{avg}}$, where T is the number of workers in a server, d_{avg} is the input graph's average degree. For example, when running PageRank on EU-2015 ($d_{avg} = 85.7$) in a 9-node cluster with 216 workers, η is expected to be 0.82.

Algorithm 1: Pregel Abstraction

```
1 super_step ← 0
2 while active_vertices ≠ ∅ do
3   for v ∈ active_vertices do
4     v.value ← v.compute(msgs)
5     v.send_message(Γout(v)), v.halt()
6   super_step ← super_step + 1
```

Algorithm 2: GAS Abstraction

```
1 super_step ← 0
2 while active_vertices ≠ ∅ do
3   for v ∈ active_vertices do
4     /* pull data from replicas via network */
4     accumulator ← sum(v.gather(Γin(v))
5     /* sync update to replicas via network */
5     v.value ← v.apply(accumulator, val(v))
6     v.scatter(Γout(v))
7   super_step ← super_step + 1
```

have multiple replicas, the *gather* function runs locally on each replica, and generates a partial result. Each mirror sends its partial result to the master, which would compute the final accumulator. In the *apply* phase, the master vertex updates its values, and sends its new value to all mirrors. In the *scatter* phase, each vertex activates its outgoing neighbors. Take PageRank as an example, PowerGraph sends $2M|V|$ messages via network in each superstep, where M is the average vertex replication factor, and keeps $M|V|$ messages in memory during the *gather* and *apply* phases.

Algorithm 3: Edge-Centric GAS Abstraction

```
1 super_step ← 0
2 while not done do
3   for p ∈ streaming_partitions do
4     load_to_memory(p.vertices)
5     for e ∈ p.out_edges do
6       scatter(e.src.value, e.target)
7   for p ∈ streaming_partitions do
8     load_to_memory(p.vertices)
9     for m ∈ p.messages do
10      m.target.accum ← gather(m.target, m.value)
11     for v ∈ p.vertices do
12      v.value ← apply(v.accum, v.value)
13   super_step ← super_step + 1
```

3) *Edge-Centric GAS*: Chaos leverages an edge-centric GAS model to represent out-of-core graph processing with three phases: *scatter*, *gather* and *apply*. During the *scatter*

Table III: Distributed Graph Processing System Comparison.

		In-Memory		Out-of-Core		Hybrid
System		Pregel+	PowerG.	GraphD	Chaos	GraphH
RAM	Vertex	$O(V)$	$O(M V)^{\#}$	$O(V)$	$O(N V /P)^{\dagger}$	$O(N V)$
	Edge	$O(E)$	$O(2 E)$	$O(1)$	$O(1)$	$O(N E /P)$
	Msg	$O(\eta E + V)^{*}$	$O(M V)$	$O(1)$	$O(1)$	$O(N V)$
Network		$O(\eta E)$	$O(2M V)$	$O(\eta E)$	$O(3 E +3 V)$	$O(N V)$
Disk Read		–	–	$O(2 E)$	$O(2 E +2 V)$	$O(\beta E)^{\ddagger}$
Disk Write		–	–	$O(E)$	$O(E + V)$	–

* η is the message combination ratio in Pregel+ and GraphD, $0 < \eta \leq 1$.

M denotes the number of vertex replicas in PowerGraph.

† N is the server number, P is the graph partition number, and $N \leq P$.

‡ β represents the cache miss ratio in GraphH's edge cache system, $0 \leq \beta \leq 1$.

phase, the *Scatter* function scans all edges from streaming partitions. When dealing with a streaming partition, Chaos first loads its vertex states into memory, and process its edges sequentially. For each edge, the *Scatter* function computes and sends a message to the target vertex. Each message is written into the associate streaming partition on disks. In the *gather* phase, the *Gather* function scans all messages in sequence, which are generated in the *scatter* phase. For each message, the *Gather* function updates the accumulator of its target vertex. Finally, in the *apply* phase, the *Apply* function scans all vertices and update their values sequentially. For each vertex, the *Apply* function uses the corresponding accumulator to its vertex value. Take PageRank as an example, in a single superstep, Chaos reads $2|V|$ vertex states, $|E|$ edges and $|E|$ messages from disks, and writes $|E|$ messages and $|V|$ vertex states into disks. All I/O operations need network communication, since Chaos distributes a single streaming partition across the cluster uniformly and randomly.

D. Comparison

Take PageRank as an example, Table III shows memory usage, network traffic and disk I/Os of Pregel+, PowerGraph, GraphD and Chaos. We should note that $|E|$ is typically much large than $|V|$ [18]. For example, a user could easily have tens of friends in a social network. For this reason, to reduce memory footprint, GraphD and Chaos leave all or a part of vertex states in memory, and stream edges from disks. Moreover, GraphD and Chaos need to store network-transmitted messages on disks at sender or receiver side.

Our proposed system, GraphH, does not require to store all data in memory, but tries to maximize the amount of in-memory data. First, we design a GAB model, which allows a server to process a small partition of edges in memory at a time. Therefore, the memory space required by edges is $O(N|E|/P)$, where N is the server number and P denotes the graph partition number. While the GAB model stores $|V|$ vertex states and $|V|$ messages in memory on each server, we note that current commodity servers easily fit these data in memory. We then design an edge cache system to reduce the amount of disk I/O operations for edges to $O(\beta|E|)$, where β is the cache miss ratio.

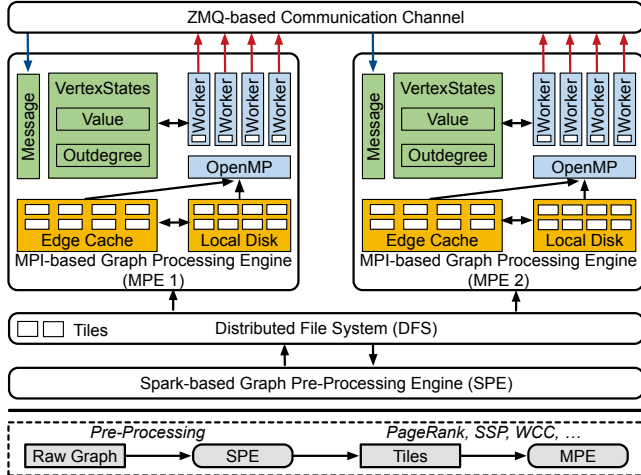


Figure 3: GraphH system architecture.

III. GRAPHH: SYSTEM DESIGN

In this section, we introduce GraphH system architecture. Then, we present the graph partitioning strategy. Next, we introduce the GAB computation model and a set of system optimizations. Finally, we analyze the cost of GraphH.

A. System Architecture

Figure 3 shows GraphH architecture. GraphH consists of a distributed file system (DFS), a Spark-based graph pre-processing engine (SPE), and an MPI-based graph processing engine (MPE). Tile is the basic graph processing unit.

1) **DFS**: DFS centrally manages all raw input graphs (e.g., edge lists), partitioned graphs (i.e., tiles), and processing results. GraphH can work in conjunction with several widely used DFSs, including HDFS and Lustre.

2) **SPE**: SPE leverages Spark to split a raw graph into disjoint sets of edges, called tiles, and writes them to DFS.

3) **MPE**: MPE takes tiles as input, and runs user-defined functions on them in supersteps (or iterations). Specifically, MPE uses MPI to parallelize the computation across multiple servers in a cluster, and leverages OpenMP to parallelize the computation across multiple workers in a server. Each vertex has a replica on all servers. Each worker loads a tile into memory for processing at a time. In this way, MPE can handle big graphs in a small cluster with limited memory. To reduce disk I/O overhead, we build an edge cache system on each server. To reduce communication overhead, we design a hybrid communication channel.

GraphH performs graph partitioning in two stages. In the first stage, SPE evenly splits the input graph’s edges into P tiles. In the second stage, MPE uniformly assigns P tiles to N servers before running specific vertex-centric programs. SPE can be called one time for each input graph, since the pre-processing results (i.e., tiles) are persisted into DFS, and can be reused by MPE to run many vertex-centric programs.

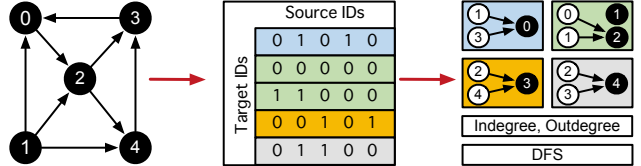


Figure 4: SPE splits the input graph into tiles, each of which contains a similar number of edges in CSR format. Edges appear in the same tile as their target vertex. SPE also stores $d_{in}(v)$ and $d_{out}(v)$ for each vertex v .

B. Spark-based Graph Pre-Processing

The data pre-processing stage presents following three challenges: 1) how to evenly assign the input graph’s $|E|$ edges to P tiles; 2) how to organize assigned edges in a tile; and 3) how to pre-process big graphs with hundreds of millions of edges. To tackle with these challenges, we design a Spark-based graph pre-processing engine in GraphH.

1) **Data Pre-Processing Overview**: SPE uses three steps to split the input graph G into P tiles. As shown in Figure 4, in the first step, we use a $|V| \times |V|$ sparse matrix to represent G , where the entry in column i and row j is the value of edge (i, j) in G . If G is an unweighted graph, then $val(i, j) = 1$. In the second step, SPE splits the sparse matrix into P tiles in a 1D fashion, each of which roughly holds $S = |E|/P$ nonzero entries. In Figure 4, $S = 2, P = 4$. In the third step, we organize the edges of each *tile* in the Compressed Sparse Row (CSR) format, and persist them into DFS in binary mode. After these three steps, each tile has following properties: 1) Each tile approximately contains $|E|/P$ edges; 2) Edges appear in the same tile as their target vertex; 3) The target vertices in the same tile have consecutive ids. Moreover, SPE also computes each vertex’s in-degree and out-degree, and store them as two arrays in DFS.

2) **Data Structure**: Each tile organizes its assigned edges in an enhanced CSR format. Given a sparse matrix, its basic CSR format consists of three arrays: `val`, `col` and `row`. More specifically, `val` and `col` store all nonzero entries and their column indices in row-major order, respectively. The array `row` records each vertex’s edge distribution: `row[i]` and `row[i+1]` indicate the beginning and ending offsets of vertex i ’s column indices and edge values. If the input graph is unweighted, all its edge values are 1, and its tiles would not manage the array `val` to save storage spaces.

3) **Tile Size**: GraphH allows users to manually configure the average tile size S (i.e., number of edges in a tile), where $S = |E|/P$. Since tile is the basic processing unit on MPE, S has high impact on performance. If S is too large, GraphH may have the memory overflow problem. For example, if $S = 256M$, each tile consumes more than 1GB memory. Given a server with 24 workers, GraphH must reserve at least 24GB memory for tiles. Since the power-law distribution of vertex degrees can be observed in most real-world graphs [7], if S is too small, the size of a tile would be bounded by high-degree vertices. As a result, GraphH cannot

Algorithm 4: Spark-based Data Pre-Processing

```
1 outdegree = edges.map(e => (e.src, 1)).reduce(SUM)
2 indegree = edges.map(e => (e.target, 1)).reduce(SUM)
3 tile_id = 0, size = 0, splitter = empty
4 while vertex_id < vertex_number do
5   size += indegree[vertex_id], splitter[tile_id+1] =
   vertex_id
6   if size ≥ S then           // S is avg tile size
7     tile_id += 1, size = 0
8   vertex_id = vertex_id + 1
9 kv = edges.map(e => (get_tile_id(e.target, splitter), e))
10 tiles = kv.group_by_key().to_CSR()
11 save_to_dfs(outdegree, indegree, tiles)
```

evenly split the input graph into tiles, leading to storage and computation imbalance. In this paper, we configure S to be a value between 15M and 25M to balance the storage and computation requirements.

4) **Splitting Big Graphs on Spark:** SPE replies on Spark to pre-process big graphs using three map-reduce jobs, as shown in Algorithm 4. The first two map-reduce jobs (line 1-2) return each vertex’s in-degree and out-degree. Then, we traverse the in-degree array, assign all encountered vertex’s in-edges to a tile until it has more than $S = |E|/P$ edges, and store the split information in a *splitter* array. Given a vertex v , all its in-edges are assigned to $\text{tile}[t_id]$, if $\text{splitter}[t_id] \leq v < \text{splitter}[t_id+1]$. We run the third map-reduce job (line 9-10) to group edges by their tile ids, and organize them in CSR.

Table IV: Input data size (GB) for different graph processing systems.

Graphs	Edge List (CSV)	Pregel+ GraphD	Giraph	Chaos	GraphH [#]
Twitter-2010	24	12	18	11	7
UK-2007	94	48	69	38	25
UK-2014	874	445	624	351	204
EU-2015	1700	862	1220	684	378

[#] Including all tiles, vertex in-degree array and vertex out-degree array.

5) **SPE Output:** SPE converts the input graph into tiles along with an in-degree array and an out-degree array, and use them as the input of specific applications on MPE. We show the input data size of MPE and other graph processing systems in Table IV. GraphX, PowerGraph and PowerLyr use edge list as input. Pregel+, GraphD, Giraph and Chaos require users to manually convert the input graph to a given format. We observe that SPE also reduces the storage space significantly, other than evenly splitting the input graph. For example, GraphH needs 378GB disk to store EU-2015 in tiles, while its raw edge list needs 1.7TB. The corresponding values of Pregel+, Giraph and Chaos are 862GB, 1.22TB, and 684GB, respectively. Vertex-centric programs can benefit a lot from this compact graph representation: 1) reduced disk I/O overhead when accessing on-disk edges; 2) improved

the amount of edges that can be cached in memory.

C. GAB-based Vertex-Centric Computation

We design an MPI-based graph processing engine (MPE) to perform vertex-centric computation. We first describe the data layout in MPE. Next, we present the GAB computation model and the parallel computation strategy. The complete pseudo-code description of MPE is shown in Algorithm 5.

1) **Data Layout:** When running a vertex-centric program on MPE, each server maintains three types of data: tiles (partitioned edges), vertex states and messages. MPE uses following strategies to manage these data.

- **Tiles.** Each server stores all assigned tiles on local disk, and uses an edge cache system to store a portion of tiles in memory. MPE uniformly assigns P tiles across N servers as following: i th tile is assigned to j th server if $i \pmod{N} = j$, and make each server fetch assigned tiles from DFS to local disk.
- **Vertices.** Each vertex has a replica on all servers. Thus, each server stores $|V|$ vertex states in memory. GraphH leverages a list of dense arrays to represent vertex states, and allow users to decide which array to include. For example, each server maintains a rank value array and an out-degree array to run PageRank.
- **Messages.** GraphH stores all messages in memory. As shown in Algorithm 5 (line 13), a server only transmits updated vertex values to other servers. Therefore, each server uses a $|V|$ -dimensional dense array to manage all received messages.

2) **GAB Model:** GraphH abstracts vertex-centric programs into the GAB (Gather, Apply, Broadcast) computation model. GAB is designed based on the GAS (Gather, Apply, Scatter) model, but differs significantly. With GAB, each vertex executes three functions to update its value in supersteps: the *gather* function collects information along its in-edges and compute an accumulator; the *apply* function uses the accumulator to produce an updated vertex value; the *broadcast* function copies the updated vertex value to other replicas. The vertex-centric program terminates when there are no updated vertices. GAB only requires users to implement the *gather* and *apply* functions.

In Algorithm 6 and 7, we use GAB to implement PageRank and single source shortest path (SSSP). In PageRank, for each vertex, the *gather* function collects information along its in-edges and sums them to be an accumulator. The *apply* function then produces a new rank value. In SSSP, the *gather* function computes the shortest path through each of the in-edges, and the *apply* function returns the new distance. Both PageRank and SSSP require users to implement an additional function to initiate all vertex values and specificity required vertex state components. For example, PageRank needs to load the vertex out-degree array into memory.

Algorithm 5: MPE Computation Engine

```
1 for tile ∈ all_tiles do
2   if tile.id (mode N) = server_id then
3     assigned_tiles.append(tile)
4 load_tiles_from_dfs_to_disk(assigned_tiles), initial_vertices()
5 while updated_vertex_num > 0 do
6   updated_vertex_num = 0;
7   /* Parallelized computation on T workers */
8   # pragma omp parallel for num_threads(T)
9   for tile ∈ assigned_tiles do
10    if tile.bloom_filter_contains(updated_vertices) then
11      load_to_memory(tile)
12      for v ∈ tile.target_vertices do
13        accum = Gather(v.in_edges, vertex_states)
14        updated_value = Apply(v.accum, v.value)
15        if updated_value ≠ v.value then
16          Broadcast(v.vertex_id, updated_value)
17      free_memory(tile)
18 wait_other_servers()
19 for v ∈ all_vertices do
20   if v.has_updated_value() then
21     v.value = v.updated_value
22     updated_vertex_num += 1
23 super_step = super_step + 1
```

3) **Parallelized Out-of-Core GAB Computation on MPE:** MPE performs parallelized out-of-core GAB computation at the level of tiles. As shown in Algorithm 5 (line 6 - 22), each server processes assigned tiles with T workers in supersteps. During the computation, each worker is scheduled to process a tile at a time. More specifically, a worker firstly loads a tile into memory, and then traverses it from the first target vertex. For each target vertex, user-defined *gather* and *apply* functions are called sequentially to produce an update value. The *gather* function would not incur any network communications, since each vertex has a replica on all servers. Finally, MPE calls the *broadcast* function to copy the updated vertex value to all other replicas. In addition, MPE follows the Bulk Synchronous Parallel (BSP) synchronization model. As shown in Algorithm 5 (line 15 - 22), after all servers have completed tile preprocessing, each server updates its vertex replicas.

4) **Avoid Loading Inactive Tiles:** For many algorithms, GraphH may just update a few vertices in a superstep. If a tile does not contain any source vertices with updated values, GraphH would not update any target vertices, wasting time to load and process it. To solve this problem, GraphH makes each tile leave a bloom filter in memory to record its source vertex information. When processing a tile, GraphH would first check whether its source vertex list contains any update vertices. If yes, GraphH would continue to load the tile into memory for processing. Otherwise, GraphH skips this tile.

Algorithm 6: PageRank implemented with GAB

```
1 Function PageRank_initial_vertex_states()
2   load_to_memory(vertices.out_degree)
3   for v ∈ vertices do v.value = 1 / num_vertex
4 Function PageRank_Gather(v.in_edges, vertices)
5   for e ∈ v.in_edges do
6     accum += e.source.value / vertices.out_degree[u.id]
7   return accum
8 Function PageRank_Apply(v.accum, v.value)
9   updated_value = 0.15 / num_vertex + 0.85 * v.accum
10  return updated_value
```

Algorithm 7: SSSP implemented with GAB

```
1 Function SSSP_initial_vertex_states()
2   for v ∈ vertices do v.value = ∞
3   all_vertices[source_vertex_id] = 0
4 Function SSSP_Gather(v.in_edges, vertices)
5   accum = ∞
6   for e ∈ v.in_edges do
7     accum = min(e.source.value + e.value, accum)
8   return accum
9 Function SSSP_Apply(v.accum, v.value)
10  return min(v.accum, v.value)
```

5) **GAS vs. GAB:** GAB is designed based on GAS, but differs significantly, as shown in Figure 5. First, GAS needs five operations to update a single vertex, and GAB requires a computation and a communication operation. Second, GAS tries to reduce the vertex replication factor by placing edges intelligently [7], while GAB requires each vertex to have a replica on all servers. However, GAB does not maintain all edges in memory, thus it uses much less memory than GAS. Third, given an updated vertex, GAS would activate its neighbors along out-edges. Only active vertices can join the computation of next superstep. As a comparison, GAB does not contain this step to save the memory used to store out-edges. At each superstep, GAB make each vertex checks whether its in-coming neighbors have new values and run the *gather*, *apply* functions accordingly.

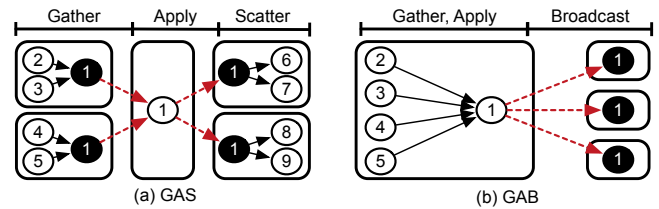


Figure 5: GAS vs. GAB. GAS requires three computation operations (local sum in the *gather* phase, update vertex in the *apply* phase, and active neighbors in the *scatter* phase) and two communication operations to update a vertex. GAB needs one computation operation (*gather* and *apply*), and one communication operation (broadcast updated vertex values).

IV. SYSTEM OPTIMIZATIONS

To improve system performance, GraphH involves a set of optimizations on system storage and communication.

A. All-in-All Vertex Replication

GraphH uses an *All-in-All* (AA) vertex replication policy to manage vertex states across N servers. Specifically, the AA policy requires each vertex has a replica on all servers. Therefore, each server maintains all $|V|$ vertex replicas in memory, even if some of them are used. While the AA policy wastes some memory to store unused vertices, it can manage each vertex state component in a dense array without indexing overhead. For example, when running PageRank, each server maintains a value array and an out-degree array. Given a vertex v , its position in the array is equal to $id(v)$. Moreover, with the AA policy, GraphH also manages all network-transmitted messages in a dense array, which is used to update vertex values at the end of a superstep. Let $M_{i,aa}$ denote the amount of memory required by GraphH for vertex-centric computation on i th server with the AA policy:

$$M_{i,AA} = Size(Vertex, Msg) \times |V| + Size(Tile) \times T, \quad (2)$$

where $Size(Vertex, Msg)$ is the size of a vertex state and a message, and T denotes the number of workers in a server, each of which processes a tile in memory at a time.

The *On-Demand* (OD) replication policy can avoid storing unused vertex states, but incurs additional indexing overhead. Let $V_{i,OD}$ be the set of vertices managed in i th server with the OD policy. More specifically, $|V_{i,OD}|$ only contains the source and target vertices that appear in assigned tiles of i th server. Each vertex state and its updated value are indexed and positioned by the vertex id. With the OD policy, the amount of required memory in i th server is:

$$M_{i,OD} = Size(ID, Vertex, Msg) \times |V_{i,OD}| + Size(Tile) \times T. \quad (3)$$

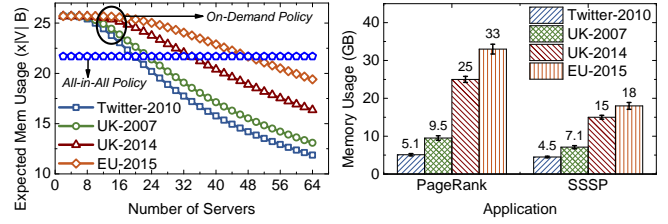
Assume the input graph G is a random graph: the neighbors of a vertex in G are randomly chosen among V . In this case, $|V|$ vertices and $|E|$ edges are evenly assigned to N servers. The expected number of vertices maintained by i th server is:

$$E[|V_{i,od}|] \leq (1 - (1 - d_{avg}/|V|)^{|V|/N})|V| + |V|/N, \quad (4)$$

where $(1 - (1 - d_{avg}/|V|)^{|V|/N})|V|$ is the number of source vertices, $|V|/N$ is the amount of target vertex number, and some target vertices may appear in the source vertex list. For big graphs, due to $\lim_{n \rightarrow \infty} (1 - 1/n)^n = e^{-1}$, we have

$$E[|V_{i,od}|] \leq (1 - e^{-d_{avg}/N})|V| + |V|/N. \quad (5)$$

We take PageRank as an example to show that the AA policy is more memory efficient than the OD policy in small clusters, since it eliminates the indexing overhead at the cost of storing unused vertices and messages. Specifically, with the AA policy, $Size(Vertex, Msg) = 20$ bytes, since each vertex value and message is represent by a



(a) Expected memory usage per server. (b) Memory usage per server in testbed.

Figure 6: GraphH memory usage analytics. (a) shows the expected amount of used memory per server, when running PageRank with the All-in-All policy and On-Demand policy. (b) shows the GraphH (using the AA policy without edge cache) memory usage per server in a 9-node cluster to run PageRank and SSSP. Each server in the cluster has 128GB memory.

double-precision number (8 bytes), and each vertex out-degree is an integer (4 bytes). When using the OD policy, $Size(ID, Vertex, Msg) = 24$ bytes, since each vertex id is represented by an unsigned integer (4 bytes). Assume that Twitter-2010, UK-2007, UK-2014 and EU-2015 are random graphs⁴, Figure 6 (a) shows the expected memory usage per server. We can observe that the AA policy consumes less memory than the OD policy for all graphs in a small cluster with less than 16 servers. In a big cluster with more than 48 servers, the OD policy consumes less memory than the AA policy to run PageRank on EU-2015. Since GraphH is designed for big graph analytics in small clusters, we use the AA policy in GraphH for memory-efficiency purpose.

Figure 6 (b) shows the memory usage of GraphH (using the AA policy without edge cache) per server to run PageRank and SSSP in a 9-node cluster. We see that the AA policy would not be a bottleneck, since current single commodity server can easily fit all vertex states and messages in the main memory. For example, to run PageRank on EU-2015, each server roughly consumes 33GB memory (including HDFS). The corresponding value of SSSP is 18GB.

B. Edge Cache Mechanism

We design an edge cache system to further reduce the disk I/O overhead of GraphH. As shown is Figure 6 (b), when running PageRank on EU-2015 in a 9-node cluster, each server only uses 33GB memory, leaving other 95GB memory idle. To reduce the amount of costly disk accesses, we build a tile cache system on these idle memory. During the vertex-centric computation, when a worker needs to load a tile, it firstly searches the cache system. If hit, the worker can get the target tile without disk I/O operations. Otherwise, the worker reads the target tile from local disks, and leaves it in the cache system if the cache system is not full.

To further reduce disk I/O overhead, GraphH can compress tiles in the edge cache system. Table V shows that popular compressors, such as snappy and zlib, can efficiently

⁴This assumption may not be accurate for a real graph. We use experiments to show that expected memory usage is effective on real graphs.

Table V: Compression ratio and processing throughput per CPU core.

	Compression Ratio			Throughput (MB/s)		
	snappy	zlib-1	zlib-3	snappy	zlib-1	zlib-3
Twitter-2010	1.75	2.78	3.22	870	55	46
UK-2007	1.89	3.71	4.54	947	58	53
UK-2014	1.96	4.34	5.26	903	65	50
EU-2015	1.96	4.35	5.88	890	62	56

	Edge List (CSV)	Tile (raw)	Tile (snappy)	Tile (zlib-1)	Tile (zlib-3)
Twitter-2010	24GB	6.5GB	3.7GB	2.3GB	2GB
UK-2007	94GB	23GB	12GB	6.2GB	5GB
UK-2014	874GB	196GB	100GB	45GB	37GB
EU-2015	1700GB	362GB	185GB	80GB	62GB

reduce the data size of real-world graphs. For example, zlib-3 (N denotes the compression level of zlib in zlib- N) can compress EU-2015 tiles by a factor of 5.88, and reduce its data size to 62GB. While workers need additional decompression time, GraphH’s edge cache system still provides much higher performance than hard disks. Table V shows that snappy can decompress tiles at a rate of up to 903MB/s per CPU core. The corresponding value of zlib-3 is 56MB/s. If a server has 22 workers, its overall tile loading rate of zlib-3 is about 1.2GB/s. In contrast, we can only achieve up to 310MB/s sequential disk read speed with RAID5, and the available disk bandwidth is shared by all workers of a server.

GraphH’s edge cache system can automatically switch to the most suitable mode, considering disk I/O and decompression overhead. In this work, we consider 4 cache modes:

- Mode-1: Cache uncompressed tiles.
- Mode-2: Cache compressed tiles processed by snappy.
- Mode-3: Cache compressed tiles processed by zlib-1.
- Mode-4: Cache compressed tiles processed by zlib-3.

When having limited memory, it is crucial to reduce the disk I/O overhead by selecting compressors or libraries with high compression rate. As shown in Figure 7, when running PageRank on EU-2015 using three servers, compared to mode-1, mode-3 could improve the system performance by a factor of 17.6 by caching all tiles in memory. With the same cache hit ratio, the decompression overhead can reduce the system performance. For example, Figure 7 shows that mode-4 increases the execution time by a factor of 2 with 9 servers, compared to mode-1. To minimize disk I/O overhead as well as decompression overhead, GraphH automatically selects the most suitable cache mode at the beginning a vertex-centric program. Let C denote GraphH’s edge cache capability, S is the input graph’s tile size, and γ_i is the estimated compression ratio of cache mode- i . GraphH would minimize i constrained by $S/\gamma_i \leq C$. If no mode can satisfy this constraint, GraphH would use mode-3. In this work, $\gamma_0 = 1, \gamma_1 = 2, \gamma_2 = 4, \gamma_3 = 5$, according to Table V.

C. Hybrid Communication Mode

We observe that a single communication mode cannot perform well all the time for vertex-centric programs. More

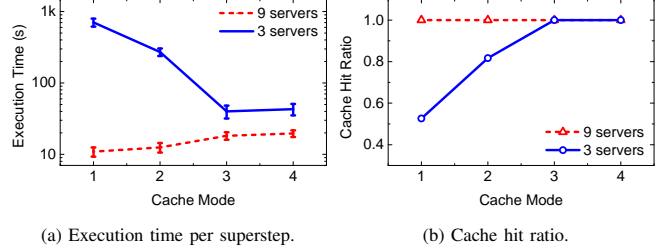


Figure 7: Execution time and cache hit ratio comparison with different cache modes. These experiments are done using PageRank on EU-2015.

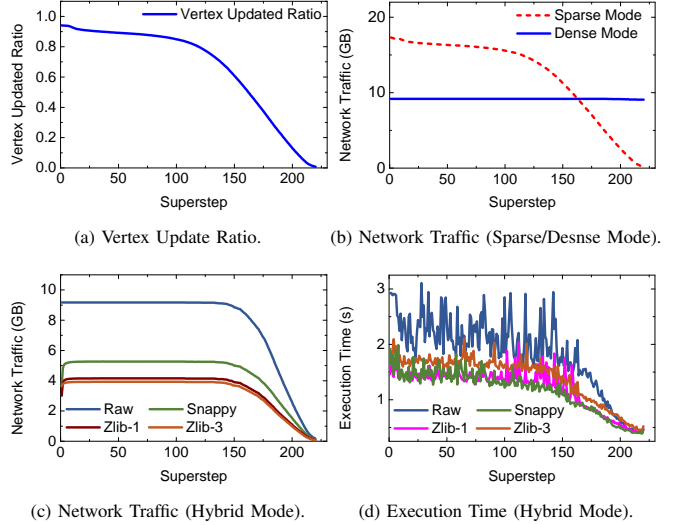


Figure 8: Network traffic of PageRank on UK-2007 in a 9-node cluster.

specifically, each worker generates a set of updated vertex values when processing a tile. GraphH makes each worker buffer updated vertex values, and broadcast them to other servers in a single message after processing the whole tile. It is advantageous to use a dense array representation for updated vertex values along with a bitvector to record updated vertex id. However, this dense communication mode may waste a lot of network bandwidth when a few of vertices are updated, because it needs to send many zeros. For example, Figure 8 (a) shows that less than 50% vertices are updated after the 160th superstep when running PageRank on UK-2007 in a 9-node cluster. The sparse array representation, which converts a dense array into a list of indices and values, can solve this problem, since it only sends updated vertex values. However, sparse communication mode would waste a huge amount of network resources to send indices, if the vertex updated ratio is high. As shown in Figure 8 (b), only after the 160th superstep, the sparse mode has lower network traffic than the dense mode.

We design a hybrid communication mode to save network bandwidth. Specifically, GraphH firstly uses a dense array to store all updated vertex values. Before the broadcasting

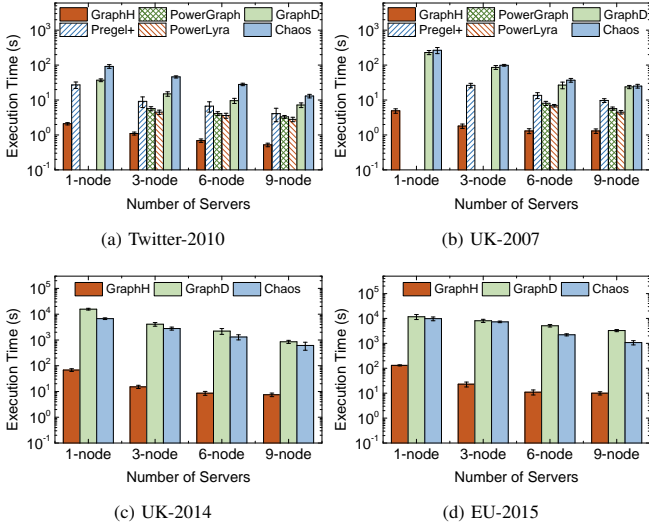


Figure 9: The average execution time per superstep to run PageRank.

phase, GraphH checks its sparsity ratio⁵. If the sparsity ratio is higher than a given threshold (in this paper, this threshold is set to 0.8), GraphH converts it into a sparse array, which only stores non-zero values and their indices. Take PageRank as an example, as shown in Figure 8 (c), at the beginning of the program, GraphH broadcasts messages under the dense node. At the end of the program, GraphH would switch to the sparse communication mode to avoid sending zeros.

Message compressing can further improve communication performance as in [23]. Figure 8 (c) shows that snappy, zlib-1 and zlib-3 could reduce network traffic by a factor of 1.7, 2.3 and 2.3, respectively. Figure 8 (d) shows that reduced network traffic can lead to improved graph processing performance. In the first 50 supersteps, GraphH roughly takes 2.32s per superstep without compression. When using snappy, zlib-1 and zlib-3, GraphH averagely takes 1.73s, 1.56s and 1.5s per superstep. While zlib could save more network traffic, the additional decompressing overhead makes it consume more execution time than snappy. The default network traffic compressor of GraphH is snappy.

V. EVALUATION RESULTS

In this section, we evaluate GraphH’s performance using a testbed with two applications (PageRank, SSSP) and four graphs (Twitter-2010, UK-2007, UK-2014 and EU-2015). The hardware and software configurations are same with the testbed shown in Figure 1. We use the average execution time per superstep as the performance metric. For each experiment, we run 21 supersteps, and calculate the average execution time without the first superstep, since distributed graph processing systems usually load the input graph to

⁵Sparsity ratio is measured by the unchanged vertex number over the total vertex number of a tile.

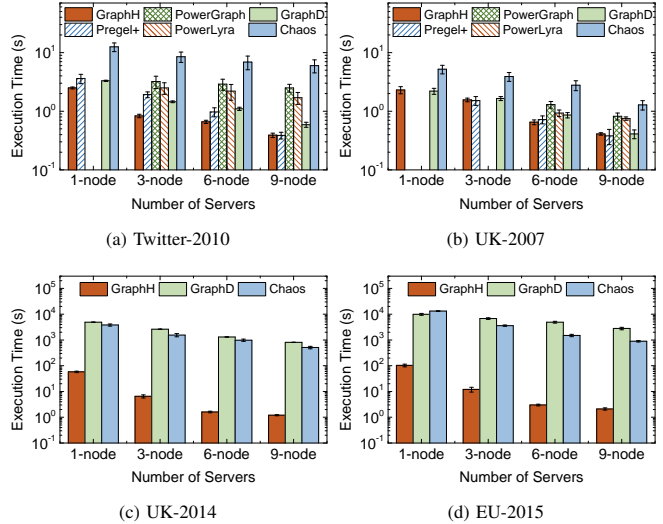


Figure 10: The average execution time per superstep to run SSSP.

memory during this superstep. We do not compare the graph loading time, since existing graph processing systems do not have unique storage system requirements. For example, Pregel+ and GraphD only support HDFS. In Chaos, we must manually distributed the graph partitions to multiple servers.

A. Performance of PageRank

Figure 9 shows that GraphH can achieve much higher performance than Pregel+, PowerGraph, PowerLyra, GraphD and Chaos when running PageRank on all four input graphs. Moreover, we observe that GraphH’s memory management strategy is efficient, since it can even process big graphs like UK-2014 and EU-2015 in a single node.

When running PageRank on Twitter-2010 with 9 servers, GraphH could outperform Pregel+, PowerGraph, PowerLyra, GraphD and Chaos by 7.8x, 6.3x, 5.3x, 13x and 25x, respectively. The corresponding speedup ratios for UK-2007 are 7.5, 4.3, 3.5, 18 and 19. The performance gain comes from GraphH’s reduced communication overhead.

As shown in Figure 9 (c) (d), GraphH can efficiently run PageRank on big graphs like UK-2014 and EU-2015 in a small cluster or even a single machine with limited memory. More specifically, on a single node, GraphH only takes 68s and 131s to run a superstep of PageRank on UK-2014 and EU-2015, respectively. When having a cluster with 9 server, GraphH only needs 7.5s and 10s on average per superstep, and could roughly outperforms GraphD and Chaps by 320 and 110, respectively. The performance gain comes from the reduced disk I/O overhead of GraphH.

B. Performance of SSSP

Figure 10 shows that GraphH also works well with SSSP. When running SSSP on Twitter-2010 and UK-2007 with 9 servers, GraphH has a similar performance with Pregel+,

and both of them roughly takes 0.4s to run a superstep. The reason is that the communication overhead is not significant for SSSP, since only a small partition of vertices may update their values. In addition, GraphH outperforms PowerGraph and PowerLyra by up to 2 for running SSSP on Twitter-2010 and UK-2007. From Figure 10 (c) (d), we can see that GraphH’s memory management is efficient when running SSSP on big graphs. Specifically, GraphH roughly takes 1.3s and 2.1s to run a superstep of SSSP on UK-2014 and EU-2015 with 9 servers. Since GraphD and Chaos have high disk I/O overhead, GraphH could outperform them by at least 350x.

VI. CONCLUSION

In this paper, we tackle the challenge of big graph analytics in small clusters. Existing in-memory systems need a huge amount of resources to handle big graphs, and out-of-core systems have poor performance due to high disk I/O overhead. We propose a new distributed graph processing system named GraphH, which does not require to store all data in memory, but it maximizes the amount of in-memory data. GraphH partitions the input graph into tiles, and makes each worker process a tile in memory at a time to reduce memory footprint. We design an edge cache system to reduce disk I/O overhead, and propose a hybrid approach to reduce communication overhead. As a result, GraphH can efficiently process big graphs with limited memory. Extensive evaluations show that GraphH could outperform existing in-memory systems by up to 7.8x when processing generic graphs, and outperform existing out-of-core systems by more than 100x when processing big graphs.

ACKNOWLEDGMENT

This work is supported by the Data Science and AI Research Center of the Nanyang Technological University, Singapore.

REFERENCES

- [1] G. Malewicz, M. H. Austern, A. J. Bik, J. C. Dehnert, I. Horn, N. Leiser, and G. Czajkowski, “Pregel: a system for large-scale graph processing,” in *SIGMOD*. ACM, 2010, pp. 135–146.
- [2] A. Ching, S. Edunov, M. Kabiljo, D. Logothetis, and S. Muthukrishnan, “One trillion edges: Graph processing at facebook-scale,” *Proceedings of the VLDB Endowment*, vol. 8, no. 12, pp. 1804–1815, 2015.
- [3] D. Yan, J. Cheng, K. Xing, Y. Lu, W. Ng, and Y. Bu, “Pregel algorithms for graph connectivity problems with performance guarantees,” *Proceedings of the VLDB Endowment*, vol. 7, no. 14, pp. 1821–1832, 2014.
- [4] S. Salihoglu and J. Widom, “Gps: A graph processing system,” in *Proceedings of the 25th International Conference on Scientific and Statistical Database Management*. ACM, 2013, p. 22.
- [5] C. Zhou, J. Gao, B. Sun, and J. X. Yu, “Mocgraph: Scalable distributed graph processing using message online computing,” *Proceedings of the VLDB Endowment*, vol. 8, no. 4, pp. 377–388, 2014.
- [6] F. Yang, J. Li, and J. Cheng, “Husky: Towards a more efficient and expressive distributed computing framework,” *Proceedings of the VLDB Endowment*, vol. 9, no. 5, pp. 420–431, 2016.
- [7] J. E. Gonzalez, Y. Low, H. Gu, D. Bickson, and C. Guestrin, “Powergraph: Distributed graph-parallel computation on natural graphs,” in *OSDI*, vol. 12, no. 1, 2012, p. 2.
- [8] R. Chen, J. Shi, Y. Chen, and H. Chen, “Powerlyra: Differentiated graph computation and partitioning on skewed graphs,” in *EuroSys*. ACM, 2015, p. 1.
- [9] J. E. Gonzalez, R. S. Xin, A. Dave, D. Crankshaw, M. J. Franklin, and I. Stoica, “Graphx: Graph processing in a distributed dataflow framework,” in *OSDI*, vol. 14, 2014, pp. 599–613.
- [10] I. Hoque and I. Gupta, “Lfgraph: Simple and fast distributed graph analytics,” in *Proceedings of the First ACM SIGOPS Conference on Timely Results in Operating Systems*. ACM, 2013, p. 9.
- [11] A. Iosup, T. Hegeman, W. L. Ngai, S. Heldens, A. Prat-Pérez, T. Manhardt, H. Chafío, M. Capotă, N. Sundaram, M. Anderson *et al.*, “Ldbc graphalytics: A benchmark for large-scale graph analysis on parallel and distributed platforms,” *Proceedings of the VLDB Endowment*, vol. 9, no. 13, pp. 1317–1328, 2016.
- [12] Y. Lu, J. Cheng, D. Yan, and H. Wu, “Large-scale distributed graph computing systems: An experimental evaluation,” *Proceedings of the VLDB Endowment*, vol. 8, no. 3, pp. 281–292, 2014.
- [13] H. Hu, Y. Wen, T.-S. Chua, and X. Li, “Toward scalable systems for big data analytics: A technology tutorial,” *IEEE Access*, vol. 2, pp. 652–687, 2014.
- [14] A. Kyrola, G. E. Blelloch, C. Guestrin *et al.*, “Graphchi: Large-scale graph computation on just a pc,” in *OSDI*, vol. 12, 2012, pp. 31–46.
- [15] J. Cheng, Q. Liu, Z. Li, W. Fan, J. C. Lui, and C. He, “Venus: Vertex-centric streamlined graph computation on a single pc,” in *ICDE*. IEEE, 2015, pp. 1131–1142.
- [16] A. Roy, I. Mihailovic, and W. Zwaenepoel, “X-stream: edge-centric graph processing using streaming partitions,” in *SOSP*. ACM, 2013, pp. 472–488.
- [17] X. Zhu, W. Han, and W. Chen, “Gridgraph: Large-scale graph processing on a single machine using 2-level hierarchical partitioning,” in *USENIX ATC*, 2015, pp. 375–386.
- [18] D. Yan, Y. Huang, J. Cheng, and H. Wu, “Efficient processing of very large graphs in a small cluster,” *arXiv preprint arXiv:1601.05590*, 2016.
- [19] A. Roy, L. Bindschaedler, J. Malicevic, and W. Zwaenepoel, “Chaos: Scale-out graph processing from secondary storage,” in *SOSP*. ACM, 2015, pp. 410–424.
- [20] J. Shun and G. E. Blelloch, “Ligra: a lightweight graph processing framework for shared memory,” in *ACM Sigplan Notices*, vol. 48, no. 8. ACM, 2013, pp. 135–146.
- [21] M. Wu, F. Yang, J. Xue, W. Xiao, Y. Miao, L. Wei, H. Lin, Y. Dai, and L. Zhou, “Gram: scaling graph computation to the trillions,” in *Proceedings of the Sixth ACM Symposium on Cloud Computing*. ACM, 2015, pp. 408–421.
- [22] D. Yan, J. Cheng, Y. Lu, and W. Ng, “Effective techniques for message reduction and load balancing in distributed graph computation,” in *WWW*. ACM, 2015, pp. 1307–1317.
- [23] P. Sun, Y. Wen, T. N. B. Duong, and S. Yan, “Timed dataflow: Reducing communication overhead for distributed machine learning systems,” in *ICPADS 2016*. IEEE, 2016, pp. 1110–1117.