



CrossMark

Original

# Integrated Taguchi-simulated annealing (SA) approach for analyzing wear behaviour of silicon nitride

Sachin Ghalme<sup>a,b,\*</sup>, Ankush Mankar<sup>c</sup>, Yogesh Bhalerao<sup>d</sup><sup>a</sup> Research Scholar, Mechanical Engineering Department, Manoharbhay Patel Institute of Engineering and Technology, Gondia, India<sup>b</sup> Mechanical Engineering Department, Sandip Institute of Technology and Research Center, Nashik, India<sup>c</sup> Mechanical Engineering Department, VM Institute of Engineering and Technology, Nagpur, India<sup>d</sup> Mechanical Engineering Department, MIT Academy of Engineering, Alandi, Pune, India

Received 9 March 2017; accepted 3 August 2017

Available online 8 December 2017

## Abstract

In this study, the integrated Taguchi-simulated annealing (SA) approach is applied to examine the wear behaviour of silicon nitride ( $\text{Si}_3\text{N}_4$ )-hexagonal boron nitride (hBN). Wear tests for  $\text{Si}_3\text{N}_4$ -hBN composite versus steel (ASTM 316L) disc were carried out for a dry sliding conditions in a so-called pin-on-disc arrangement. The tests were realized at % volume of hBN 0, 4, 8, 12, 16 in  $\text{Si}_3\text{N}_4$  under the loads of 5, 10, 15, 20, 25 N. The wear rate (WR) was analyzed using Taguchi –signal to noise ratio approach with the aim of finding optimal combination of load and % volume of hBN in  $\text{Si}_3\text{N}_4$ . By applying the analysis of variance, it was also found that the greatest impact on wear rate has interaction of load and % volume of hBN with percentage effect of 51.89%, then % volume of hBN with 35.04% and load with 13.06%. The experimental results are further utilized to develop the second-order, linear mathematical model. Further, this model is processed with simulated annealing (SA) to find the optimal combination of load and % volume of hBN to minimize wear rate. Combined Taguchi-SA approach was successfully used to predict the optimal combination of load and % volume of hBN in  $\text{Si}_3\text{N}_4$  to minimize wear rate of  $\text{Si}_3\text{N}_4$ . The dominant wear mechanism is adhesive wear as confirmed by scanning electron microscopy with energy dispersive spectroscopy (SEM-EDS).

© 2017 Universidad Nacional Autónoma de México, Centro de Ciencias Aplicadas y Desarrollo Tecnológico. This is an open access article under the CC BY-NC-ND license (<http://creativecommons.org/licenses/by-nc-nd/4.0/>).

**Keywords:** Silicon nitride ( $\text{Si}_3\text{N}_4$ ); Hexagonal boron nitride (hBN); Steel (ASTM 316L); Design of experiments (DoE); Taguchi method; Simulated annealing (SA)

## 1. Introduction

Materials, which can replace a body part or function of the body part in a safe and reliable manner are called biomaterials. Biomaterials need to be inert and mechanically stable enough to bear the load of the human body. Every year approximately 250,000 knee replacements and 1 million hip replacements are carried out (Sculco, 1995). It is estimated that this number will double up to 2025 as a result of ageing populations and growing demand for a higher quality of life (Kurtz, Ong, Lau, Mowat, & Halpern, 2007; Rakhorst & Ploeg, 2008). Biomaterials are expected to work satisfactorily in body environment,

where the pH value of body fluid varies from 1 to 9. Titanium alloys and stainless steel are frequently used in total hip replacement (THR), but the main risk with metal alloy implants is the release of metal ions due to wear and creating a negative effect like aseptic loosening caused by adverse biological reactions due to wear products. Therefore metal-on-UHMWPE bearing became advantages or preferable to the metal-on-metal system (McKellop, Shen, Lu, Cambell, & Salovey, 1999; Muratoglu et al., 1999).

Biocompatibility of  $\text{Si}_3\text{N}_4$  has presented it an attractive alternative in the area of biomaterials (Howlett, McCartney, & Ching, 1989). Bearings made of ceramics have low wear properties that make them suitable for total hip arthroplasty (THA) and total knee arthroplasty (TKA). When compared to cobalt chrome (CoCr)-on-polyethylene (PE) articulations, ceramics offer drastic reductions in bearing wear rates. As the search for the ideal total joint bearing material continues,  $\text{Si}_3\text{N}_4$  is applicable in the

\* Corresponding author.

E-mail address: [sachinghalme@hotmail.com](mailto:sachinghalme@hotmail.com) (S. Ghalme).

Peer Review under the responsibility of Universidad Nacional Autónoma de México.

Table 1  
Properties of sintered sample.<sup>a</sup>

Sample	1 (4% vol. of hBN)	2 (8% vol. of hBN)	3 (12% vol. of hBN)	4 (16% vol. of hBN)	5 (0% vol. of hBN)
Density (gm/cc)	1.96	1.96	1.93	1.84	2.04
Vickers hardness (MPa)	2775.88	2318.17	1741.07	907.96	7484.51

<sup>a</sup> Testing at Central Glass and Ceramic Research Institute, Kolkata (India).

Table 2  
Typical properties of steel disc.

Designation	Density (gm/cc)	Modulus of elasticity in tension (Gpa)	Mean coeff. of thermal expansion from 293 to 873 °K (10 <sup>-6</sup> /K)	Thermal conductivity at 373 °K (W/m K)	Avg. surface roughness Ra (µm)
ASTM 316L	7.95	186.4	18.5	16	0.242

biomedical field for various applications like bearing for spine disc surgery and prosthetic hip and knee joints also been developed with Si<sub>3</sub>N<sub>4</sub> (Bal et al., 2008; Neumann et al., 2006). Bal and Rahaman (2012) covered scientific rationale for the use of Si<sub>3</sub>N<sub>4</sub> in the orthopaedic application. Biomaterials with minimum wear rate are needed in the orthopaedic field; research in this area is trying to evaluate biomaterials with minimum wear rate and consequently extending the life of the body part replaced. Si<sub>3</sub>N<sub>4</sub> shows excellent wear resistance and Si<sub>3</sub>N<sub>4</sub> bearing for arthroplasty applications are investigated by Amedica Corporation (Salt Lake City, UT). Mode of failure in THR is related to the area of tribology, i.e., wear of cup and head. It is desirable to reduce the generation of wear particle in the implant to avoid aseptic loosening and failure of THR. Olofsson et al. (2012) did a sliding contact wear test using a pin-on-disc tribometer with Si<sub>3</sub>N<sub>4</sub> and a CoCr disc against Si<sub>3</sub>N<sub>4</sub> and Al<sub>2</sub>O<sub>3</sub> ball in the presence of phosphate buffered saline (PBS) and bovine serum. Si<sub>3</sub>N<sub>4</sub> sliding against Si<sub>3</sub>N<sub>4</sub> showed the formation of tribofilm on Si<sub>3</sub>N<sub>4</sub> controlling friction and wear in both PBS and bovine serum comparable to other pairs. Low wear rate and biocompatibility of Si<sub>3</sub>N<sub>4</sub> presented it as a good candidate for hip joint replacement. Hexagonal boron nitride (hBN) is well known, biocompatible solid lubricating material (Gangopadhyay, Jahanmir, & Peterson, 1997; Saito, Imada, & Honda, 1999; Shah, Glavatskih, & Antzutkin, 2013). Incorporation solid lubricant in Si<sub>3</sub>N<sub>4</sub> can be considered to improve the tribological performance of Si<sub>3</sub>N<sub>4</sub>. Carrapichano, Gomes, and Silva (2002) conducted sliding wear test on a pin-on-disc tribometer for Si<sub>3</sub>N<sub>4</sub>-BN composite in a self-mated pair, with 10, 18 and 25% vol. of BN in Si<sub>3</sub>N<sub>4</sub>. They concluded that the addition of boron up to 10% improved tribological properties of Si<sub>3</sub>N<sub>4</sub> but further addition affects the mechanical properties of Si<sub>3</sub>N<sub>4</sub>. Chen, Gao, Wang, and Li (2010) investigated the sliding wear behaviour of the Si<sub>3</sub>N<sub>4</sub>-hBN composite with 0, 5, 10, 20 and 30% vol. of hBN in Si<sub>3</sub>N<sub>4</sub> against Si<sub>3</sub>N<sub>4</sub> using a pin-on-disc (PoD) tribometer. They reported that the friction coefficient reduces up to 0.19 for 20% vol. of hBN in Si<sub>3</sub>N<sub>4</sub>.

To understand and evaluate the performance of any process, experimentation is necessary. In the field of testing, the design of experiment (DoE) – Taguchi method is efficient to plan and analyze the results of the experiment (Antony, 2008). Patnaik, Satapathy, Mahapatra, and Dash (2009) implemented

DoE-Taguchi design technique to study the tribo-performance of polyester hybrid composites. The result presented that glass-polyester composite without any filler suffers greater erosion loss than the hybrid composite with alumina filling. Lastly, the results were optimized using a genetic algorithm. Asiltürk and Neşeli (2012) optimized the turning parameters in a CNC turning using the Taguchi method, and the response surface analysis showed the applicability and effectiveness of the Taguchi method in the field of optimization. Sait, Oughali, and Al-Asli (2016) utilized Tabu search, and simulated annealing algorithm to tackle the problem of design 3D integrated circuits; comparison of results showed that both these techniques produce high-quality results. Rambabu, Balaji Naik, Venkata Rao, Srinivasa Rao, and Madhusudan Reddy (2015) implemented RSM for developing a mathematical model for corrosion resistance of friction stir welding as a function in terms of welding parameters and this mathematical model optimized using simulated annealing algorithm to maximize the corrosion resistance.

The aim of this study is to evaluate the wear behaviour of the Si<sub>3</sub>N<sub>4</sub>-hBN composite against steel under different loading conditions considering the application in the field of orthopaedics. In this work, we implemented the DoE-Taguchi method to plan and analyze results to find the optimal combination of load and proportion of % volume of hBN in Si<sub>3</sub>N<sub>4</sub> for minimization of wear rate. Using experimental results the mathematical model proposed and processed with simulated annealing to find the optimum combination of load and % volume of hBN in Si<sub>3</sub>N<sub>4</sub> for minimization of wear rate.

## 2. Materials and methods

### 2.1. Preparation of samples

Si<sub>3</sub>N<sub>4</sub>-hBN composites prepared with 0, 4, 8, 12 and 16% vol. of hBN mixed in Si<sub>3</sub>N<sub>4</sub>. The mixing of Si<sub>3</sub>N<sub>4</sub> and hBN is performed with a ball mill. The pin samples were prepared at uniaxial hot-pressing at 30 MPa, 1600 °C and 60 min dwell time with polyvinyl alcohol as an additive. The pin dimensions were 10 mm diameter and 15 mm long. Tables 1 and 2 shows the properties of sintered specimens and a steel disc, respectively.

## 2.2. DoE-Taguchi methodology

The Taguchi method was developed by Genichi Taguchi for planning experiments and to investigate how different factors affect the mean and variance of a process characteristic. Orthogonal arrays, the experimental design proposed by Taguchi, helps to organize the factors influencing the process and the levels at which they should be varied; it contributes to collect the necessary data to determine which factors most affect product quality with a minimum amount of experimentation, thus saving time and resources. The proper orthogonal array can be selected with knowledge of the number of factors and their levels. The experiments were carried out to analyze the influence of testing parameters on the wear rate of composite made of  $\text{Si}_3\text{N}_4$  and hBN. The factors and corresponding levels are illustrated in Table 3.

Load and % volume hBN are two factors selected at five levels as shown in Table 3. Therefore  $L_{25}$  orthogonal array selected, in total 25 experiments were carried out; each experiment repeated twice to maintain consistency, with the aim of relating the influence of load and % volume of hBN on wear rate.

## 2.3. Wear test procedure

The wear tests were conducted on a Ducom TRLE-PMH400 pin-on-disc tribometer having a maximum normal load capacity of 200 N. Figure 1(a) shows a schematic arrangement of loading used for testing and Figure 1(b) shows the experimental setup used for testing. Tests were performed according to ASTM F732 standards (ASTM F732-00, 2011). During test composite used as pin specimen loaded through a vertical specimen holder against a flat steel disc as counterface rotating at a speed of 200 rpm for a 20-min duration. Before tests, the flat surface of the pin was abraded with grit paper. Tests were conducted in a dry environment without lubricant and at atmospheric condition. Table 4 shows the average value of wear rate for all 25 experiments.

## 2.4. Taguchi-SA approach for modelling and analysis of wear behaviour

Integrated Taguchi-SA approach used for modelling, analysis, and optimization of wear behaviour of the  $\text{Si}_3\text{N}_4$ -hBN composite. Figure 2 presents the steps of the integrated Taguchi-SA approach applied for optimization.

Table 3  
Designed experimental factors and levels.

Factors	Level 1	Level 2	Level 3	Level 4	Level 5
Load (N)	5	10	15	20	25
% vol. of hBN	4	8	12	16	0

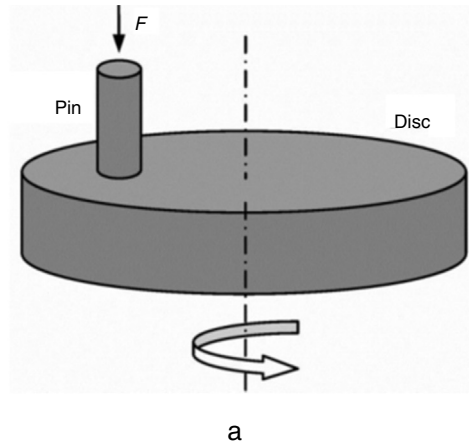


Fig. 1. (a) Schematic arrangement of loading and (b) experimental setup.

## 3. Results and discussion

### 3.1. Signal-to-noise (S/N) ratio analysis

Experiments were performed on a pin-on-disc tribometer with two input parameters and wear rate of a specimen as output. Wear rate calculated for sliding distance covered by pin during 20 min duration and speed of disc 200 rpm at corresponding wear track diameter. Taguchi recommended the use of signal-to-noise (S/N) ratio measured by the deviations of characteristics from the target value. The experimental results are further transformed into signal-to-noise (S/N) ratio. The significance of the controllable factor is investigated using S/N ratio approach. A smaller of wear rate is expected to extend joint life. Therefore,

Table 4  
Results for wear rate (WR) and S/N ratio.

Expt. No.	Load (N)	% vol. of hBN	Avg. Vol. wear rate (mm <sup>3</sup> /m)	S/N ratio (dB)
1	5	4	0.667	3.51659
2	5	8	0.065	23.71267
3	5	12	0.038	28.39201
4	5	16	0.421	7.51621
5	5	0	0.498	6.05037
6	10	4	0.221	13.09447
7	10	8	0.148	16.59237
8	10	12	0.065	23.67333
9	10	16	0.859	1.31969
10	10	0	1.529	-3.69063
11	15	4	0.062	24.13223
12	15	8	0.187	14.56408
<b>13</b>	<b>15</b>	<b>12</b>	<b>0.013</b>	<b>37.98933</b>
14	15	16	0.484	6.31125
15	15	0	0.262	11.64904
16	20	4	0.549	5.19476
17	20	8	0.356	8.98075
18	20	12	0.212	13.48807
19	20	16	0.944	0.49931
20	20	0	0.206	13.71968
21	25	4	0.115	18.76422
22	25	8	0.519	5.68877
23	25	12	0.476	6.45051
24	25	16	0.787	2.08272
25	25	0	0.467	6.60922

in this study a S/N ratio with a smaller-the-better methodology was used for wear rate and calculated as follows:

$$\left(\frac{S}{N}\right)_{SB} = -10 \log_{10} \left( \frac{y_1^2 + y_2^2 + y_3^2 + \dots}{n} \right) \quad (1)$$

where  $y_1, y_2$  and so on = experimental results/observation,  $n$  = number of experiments ( $i \dots n$ ).

Irrespective of the category of the performance characteristic, the higher value of S/N ratio corresponds to a better performance (Kamaruddin, Khan, & Foong, 2010). The maximization of S/N ratio signifies maximization of the desired effect (minimization of wear rate) against noise factor. Observation of the response table of the S/N ratio gives an optimal combination of input parameters for the required output characteristic. From Table 4, expt. 13 offers an optimal combination of 15 N load and 12% vol. of hBN for a minimum wear rate of 0.013 mm<sup>3</sup>/m with a maximum S/N ratio of 37.98933 dB.

### 3.2. Response plot

The interaction plot represents the interaction effect of control factors on performance characteristics, showing the minimum value of wear rate at the interaction of 15 N load and 12% vol. of hBN in Figure 3 and the maximum value of S/N ratio at the same combination in Figure 4 prepared with Minitab 17.

From the interaction plot, for wear rate and S/N ratio, it is clear that wear is affected by the interaction of load and % volume of hBN. The interaction plot also presents an optimal combination

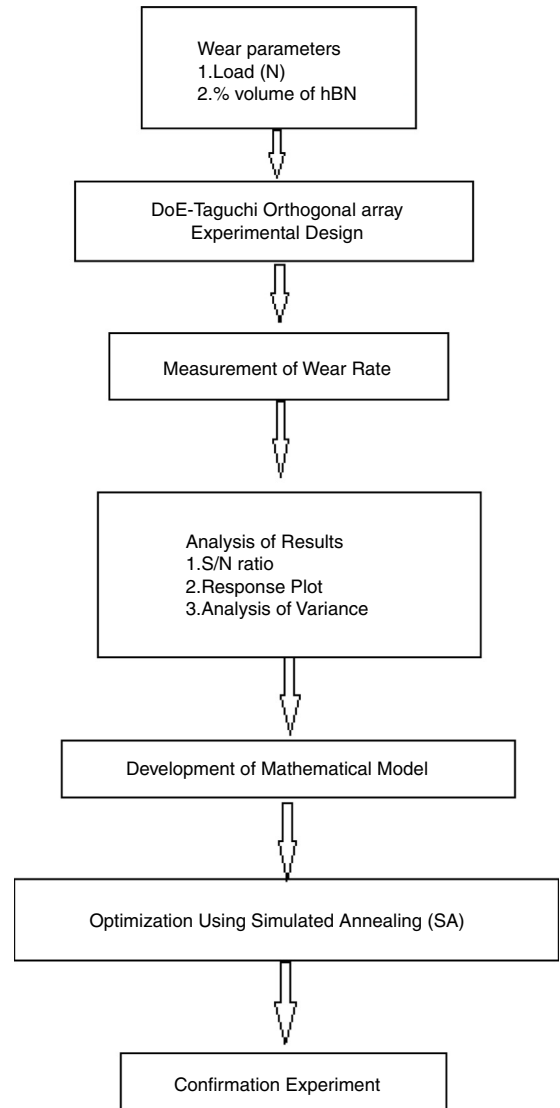


Fig. 2. Integrated Taguchi-SA approach.

of 15 N load and 12% vol. of hBN for minimum wear rate of 0.013 mm<sup>3</sup>/m.

### 3.3. Analysis of variance (ANOVA)

ANOVA standard statistical technique used to interpret experimental results. The analysis of variance is used to study the parameter combinations which significantly influence the output response, i.e., wear rate. The study was conducted at 90% of confidence level. The results of the variance analysis are given in Table 5.

In the ANOVA table (Ghalme, Mankar, & Bhalerao, 2016):

- The degree of freedom (DF) is a measure of amount independent information available from the given set of data. DF for concerning factor is less than the number of levels.
- The sequential sum of squares (Seq SS) of factor measures the variability in data contributed by that factor. Total SS is the sum of SS of an individual factor and SS of error.

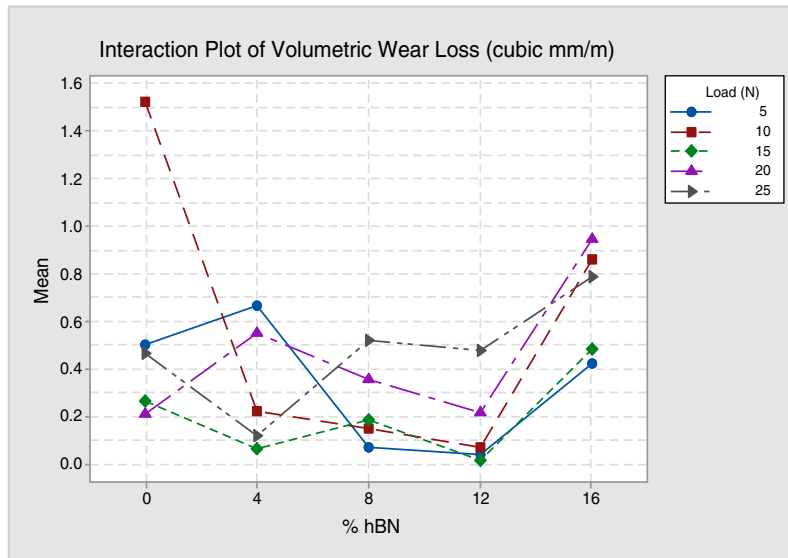


Fig. 3. Interaction plot for wear rate (mm<sup>3</sup>/m).

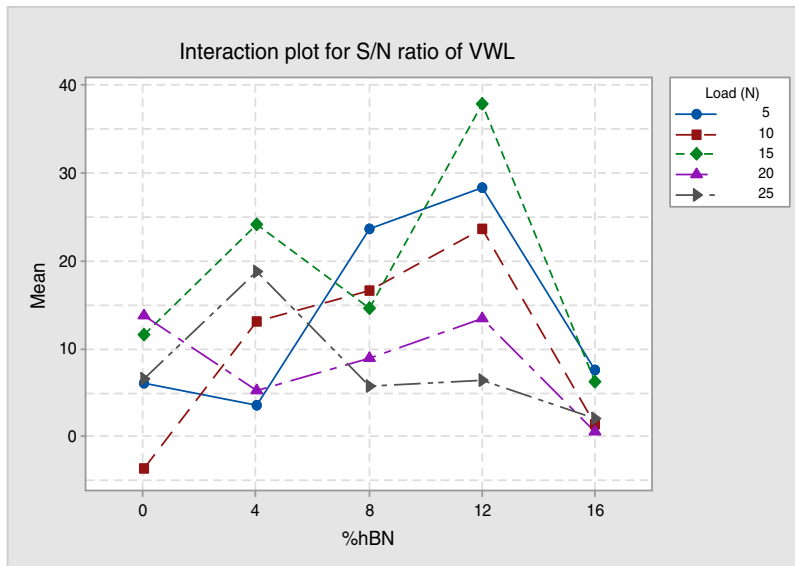


Fig. 4. Interaction plot of S/N ratio for wear rate.

Table 5  
Analysis of variance for wear rate.

Source	DF	Seq. SS	Contribution	Adj. SS	Adj. MS	F value	P value
Load (N)	4	0.3921	13.06%	0.3921	0.09804	–	–
% vol. of hBN	4	1.0519	35.04%	1.0519	0.26296	–	–
Load * %Vol. of hBN	16	1.5578	51.89%	1.5578	0.09736	–	–
Error	0	–	–	–	–	–	–
Total	24	3.0018	100%	–	–	–	–

$$\text{Seq SS}_{\text{total}} = \sum_i \sum_j (y_{ij} - \bar{y})^2 \tag{4}$$

where  $\bar{y}_i$  – is the mean of observation at  $i$ th factor level,  $\bar{y}$  – mean of all observation,  $y_{ij}$  – value of  $j$ th observation at the  $i$ th factor level,  $n_i$  – number of observation for  $i$ th factor level.

- Adjusted mean square (AdjMS) or variance is given by:

$$\frac{\text{Adj MS}}{\text{Variance}_{\text{factor}}} = \frac{\text{Adj SS}_{\text{factor}}}{\text{DF}} \tag{5}$$

- Percentage contribution signifies individual contribution of a factor on the mean response. It is calculated by:

$$\% \text{ Contribution} = \frac{\text{Seq SS}_{\text{factor}}}{\text{Seq SS}_{\text{total}}} * 100 \tag{6}$$

$$\text{Seq SS}_{\text{factor}} = \sum n_i (\bar{y}_i - \bar{y})^2 \tag{2}$$

$$\text{Seq SS}_{\text{error}} = \sum_i \sum_j (y_{ij} - \bar{y}_i)^2 \tag{3}$$

From the analysis of variance, it can be concluded that the interaction of load and % volume of hBN has the greatest contribution of 51.89% followed by 35.04% of % volume of hBN and 13.06% of the load on the wear rate of silicon nitride.

### 3.4. Morphology of worn surface

Worn surface of the composite material was examined using scanning electron microscope and energy dispersive spectroscopy (SEM-EDS) so as to understand the mechanism of wear. These micrographs were obtained after the tribological test at 200 rpm and a normal load of 15 N. SEM micrographs along with EDS are given in Figure 4. The mechanism of wear of the examined composite material is adhesive wear. In Figure 5, a consequence of adhesive wear can be observed because there was a pulling material from the contact area of the composite material. It was concluded by the visible traces in the form of cavities of irregular shapes and depth on the surface.

## 4. Optimization

### 4.1. Mathematical modelling

A second-order polynomial equation used to fit the experimental data using Minitab 17 statistical software. A quadratic model which includes the linear model can be described as:

$$y = \beta_0 + \beta_1x_1 + \beta_2x_2 + \beta_3x_1x_2 + \beta_4x_1^2 + \beta_5x_2^2 + \varepsilon \quad (7)$$

where  $y$  is the response modelled as a function of constant, linear, interaction and quadratic terms formed from two predictor variables  $x_1$  and  $x_2$ ,  $\beta_0$  is the model intercept coefficient,  $\beta_i$  ( $i = 1 \dots 5$ ) are the coefficients of linear, interaction and quadratic terms, respectively, and  $\varepsilon$  is random error (MATLAB Stat Guide, 2010). From the experimental data obtained from Taguchi orthogonal array experimentation the final equations obtained in terms of coded factors-load and % volume of hBN for wear rate (WR) as follows:

$$\begin{aligned} \text{WR (mm}^3/\text{m)} &= 1.048 - 0.0388 * \text{load (N)} - 0.1587 * \\ &\% \text{hBN} + 0.00057 * \text{load (N)} * \text{load (N)} + 0.0709 * \\ &\% \text{hBN} * \% \text{hBN} - 0.00210 * \text{load (N)} * \% \text{hBN} \end{aligned} \quad (8)$$

ANOVA is used to evaluate the variability between predicted data by model and experimental data.

In ANOVA table:

- Variance ratio ( $F$  value): commonly called as  $F$ -statistics, is the ratio of variance due to the individual factor and variance due to the error term.

$$F \text{ value}_{\text{model}} = \frac{\text{Adj MS}_{\text{model}}}{\text{Adj MS}_{\text{error}}} \quad (9)$$

Table 6 presents ANOVA for model calculated at 90% confidence level.

From  $F$  statistic table (Table 7) it is clear that the  $F$ -value calculated for the model is more than the  $F$ -value obtained from

Table 6  
Analysis of variance for model.

Source	DF	Seq. sum of square	Adj. mean sum of squares	$F$ -Value
Model	2	1.3927	0.6964	6.5582
Error	22	2.3360	0.1062	
Total	24	3.0017	0.1251	

Table 7  
 $F$  statistic table.

$F$ -value calculated for model	6.5582
$F$ -value from table, $F_{(0.1;2;22)}$	2.56

the design and analysis table (Ross, 2005) indicating that the model is significant.

### 4.2. Optimization using simulated annealing

Simulated annealing (SA), name and inspiration come from the annealing process in metallurgy, a technique involving heating and controlled cooling of the material to increase the size of its crystal and reduce their defects. Simulated annealing is a technique for finding an optimal (not necessarily perfect) solution to an optimization problem. If you are in a condition to find the maximum or minimum of something, your problem can likely be tackled with simulated annealing. The first use or idea of SA is derived from a paper by Metropolis, Rosenbluth, Rosenbluth, Teller, and Teller (1953) in 1953. The Metropolis algorithm simulates the cooling process for a system by gradually lowering the temperature of the system until the system converges to a steady, frozen state.

The algorithm for SA as follows (Kirkpatrick, Gellat, & Vecchi, 1983; Rao, 2009):

1. Start with an initial guess ( $X_i$ ) and high temperature.
2. Generate a new design point ( $X_{i+1}$ ) in the vicinity of the current point randomly and find the difference in function values.

$$\Delta E = \Delta f = f_{i+1} - f_i = f(X_{i+1}) - f(X_i)$$

If  $\Delta f$  is negative accept  $X_{i+1}$  as the next design point.

3. If  $\Delta f$  is positive, accept  $X_{i+1}$  as the next design point only with a probability  $e^{-\Delta E/kT}$ . Otherwise reject point  $X_{i+1}$ . where  $k$  is a scaling factor, called Boltzmann's constant.
4. When  $X_{i+1}$  is rejected, then repeat steps 2 and 3. To simulate the attainment of thermal equilibrium at every temperature, a predetermined number ( $n$ ) of new points  $X_{i+1}$  are tested for any specific value of temperature  $T$ . If 'Metropolis equilibrium' is reached, go to step 5, else go to step 2.
5. If the current value of  $T$  is sufficiently small or even when the change in the function values ( $\Delta f$ ) is to be sufficiently small, the solution has converged.

Using this algorithm code developed and simulated with MATLAB for Eq. (8), objective function wear rate to be mini-

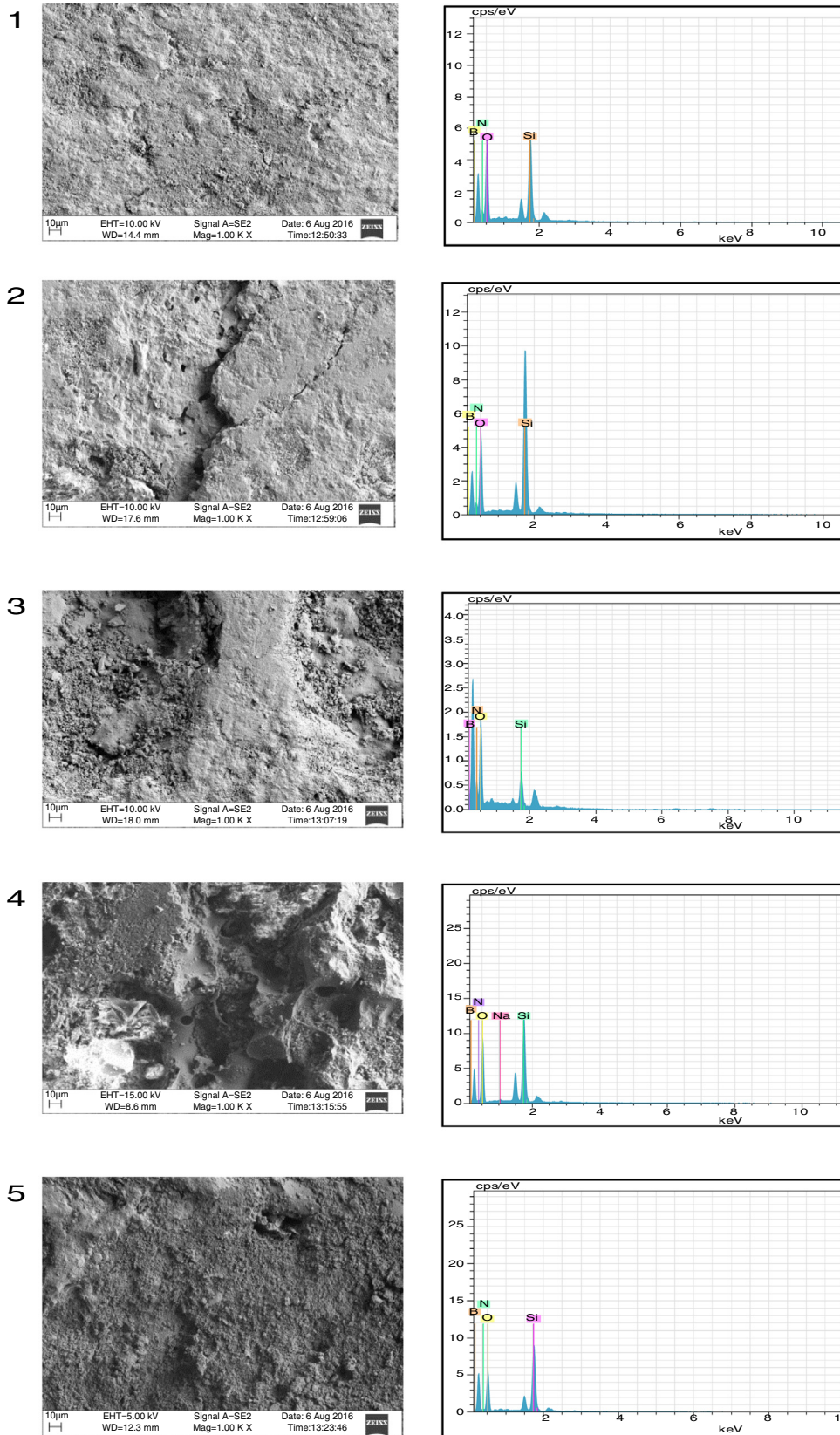


Fig. 5. SEM micrograph and EDS analysis of sample 1–5.

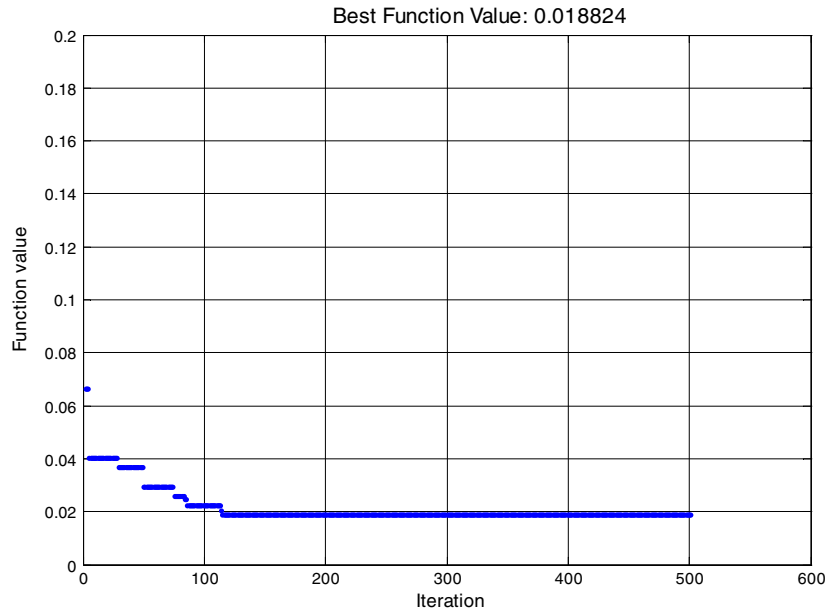


Fig. 6. Best fitness plot.

Table 8  
Optimum factor value and objective function value.

Load (N)	% vol. of hBN	Objective function value – WR (mm <sup>3</sup> /m)
18.177	8.495	0.01882

Table 9  
Experimental factors and results.

Expt. No.	Load (N)	% vol. of hBN	Expt. result – WR (mm <sup>3</sup> /m)
1	50	12	9.7745
2	100	12	9.9641
3	150	12	9.2272

mized. The upper and lower bound of control factors are given in Eqs. (10) and (11). Results of the optimum value of the individual factors are shown in Table 8 with the best fitness plot illustrated in Figure 6.

$$5 \leq \text{Load (N)} \leq 25 \quad (10)$$

$$0 \leq \% \text{ Volume of hBN} \leq 16 \quad (11)$$

## 5. Confirmation experiment

The optimal combination of control factors has been presented in the *S/N* ratio, response plot, and simulated annealing indicating that the interaction effect is significant for wear rate. The final step in any design of the experiment approach is to predict and verify improvements in the characteristic performance values through the use of the optimal combination level of control factors (Asiltürk and Neşeli, 2012). Table 9 shows the experimental conditions and results for the confirmation experiments conducted as per earlier conditions.

Table 10  
Results of Taguchi method and simulated annealing.

Methodology	Load (N)	% vol. of hBN	Wear rate (mm <sup>3</sup> /m)
DoE-Taguchi method	15	12	0.013
Simulated annealing	18.177	8.495	0.01882

Confirmation experiments were conducted for 12% vol. of hBN sample for 50 N, 100 N, and 150 N load. The average value of wear rate found to be 9.6552 mm<sup>3</sup>/m.

## 6. Conclusions

The application of Taguchi-SA optimization for wear rate minimization of the Si<sub>3</sub>N<sub>4</sub>-hBN composite is presented in this paper. Experiments were conducted using the DoE-Taguchi method at five levels of load and % volume of hBN in Si<sub>3</sub>N<sub>4</sub>. The objective function was to minimize wear rate. Table 10 shows optimum values for load and % volume of hBN obtained by Taguchi analysis and SA optimization for minimization of wear rate in Si<sub>3</sub>N<sub>4</sub> against steel counterface.

Key findings drawn from the present investigations are:

1. Interaction of load and % volume of hBN has a significant contribution to the wear rate of Si<sub>3</sub>N<sub>4</sub>, about 51.89%.
2. Both methods present different combination of load and % volume of hBN in Si<sub>3</sub>N<sub>4</sub>, to minimize wear rate, which signifies that wear rate is a function of both control factors.
3. Silicon nitride-hexagonal boron nitride composite against steel is proposed combination for hip/knee joint replacement. Wear rate is a function of load and % volume of hBN, so while selecting the optimum proportion of hBN in Si<sub>3</sub>N<sub>4</sub> for minimizing the wear loss corresponding load value must be considered.



## Conflict of interest

The authors have no conflicts of interest to declare.

## References

- Antony, J. (2008). *Design of experiments* (1st ed.). Elsevier Ltd.
- Asiltürk, I., & Neşeli, S. (2012). Multi response optimisation of CNC turning parameters via Taguchi method-based response surface analysis. *Measurement*, 45(4), 785–794.
- ASTM F732-00. (2011). *Standard test method for wear testing of polymeric materials used in total joint prostheses. Annual book of ASTM standards*. pp. 212–217.
- Bal, B. S., & Rahaman, M. N. (2012). Orthopedic applications of silicon nitride ceramics. *Acta Biomaterialia*, 8(8), 2889–2898.
- Bal, B. S., Khandkar, A., Lakshminarayanan, R., Clarke, I., Hoffman, A. A., & Rahaman, M. N. (2008). Testing of silicon nitride ceramic bearings for total hip arthroplasty. *Journal of Biomedical Materials Research Part B: Applied Biomaterials*, 87(2), 447–454.
- Carrapichano, J. M., Gomes, J. R., & Silva, R. F. (2002). Tribological behavior of Si<sub>3</sub>N<sub>4</sub>-BN ceramic material for dry sliding applications. *Wear*, 1070–1076.
- Chen, W., Gao, Y., Wang, Y., & Li, H. (2010). Tribological behavior of Si<sub>3</sub>N<sub>4</sub>-hBN ceramic materials without lubrication under different test modes. *Tribology Transactions*, 53(6), 787–798.
- Gangopadhyay, A., Jahanmir, S., & Peterson, M. B. (1997). Self-lubricating ceramic matrix composites. In S. Jahanmir (Ed.), *Friction and wear of ceramics* (pp. 163–197). New York: Marcel Dekker.
- Ghalme, S., Mankar, A., & Bhalerao, Y. J. (2016). Optimization of wear loss in silicon nitride (Si<sub>3</sub>N<sub>4</sub>)-hexagonal boron nitride (hBN) composite using DoE-Taguchi method. *SpringerPlus*, 5(1), 1671. <http://dx.doi.org/10.1186/s40064-016-3379-7>
- Howlett, C. R., McCartney, E., & Ching, W. (1989). The effect of silicon nitride ceramic on rabbit skeletal cells and tissue: An in vitro and in vivo investigation. *Clinical Orthopaedics and Related Research*, 244, 293–304.
- Kamaruddin, S., Khan, Z. A., & Foong, S. H. (2010). Application of Taguchi method in the optimization of injection moulding parameters for manufacturing products from plastic blend. *IACSIT International Journal of Engineering and Technology*, 2(6), 574–580.
- Kirkpatrick, S., Gelatt, C. D., & Vecchi, M. P. (1983). Optimization by simulated annealing. *Science*, 220(4598), 671–680.
- Kurtz, S., Ong, K., Lau, E., Mowat, F., & Halpern, M. (2007). Projections of primary and revision hip and knee arthroplasty in the United States from 2005 to 2030. *Journal of Bone and Joint Surgery – Series A*, 89(4), 780–785.
- MATLAB Stat Guide. (2010). *MATLAB Release 2101a*. The MathWorks Inc.
- McKellop, H., Shen, F. W., Lu, B., Cambell, P., & Salovey, R. (1999). Development of an extremely wear-resistant ultra-high molecular weight polyethylene for total hip replacement. *Journal of Orthopaedic Research*, 17(2), 157–167.
- Metropolis, N., Rosenbluth, A. W., Rosenbluth, M. N., Teller, A. H., & Teller, E. (1953). Equation of state calculations by fast computing machines. *The Journal of Chemical Physics*, 21(6), 1087–1092.
- Muratoglu, O. K., Bragdon, C. R., O'Connor, D. O., Jasty, M., Harris, W. H., Gul, R., et al. (1999). Unified wear model for highly crosslinked ultra-high molecular weight polyethylenes (UHMWPE). *Biomaterials*, 20(16), 1463–1470.
- Neumann, A., Unkel, C., Werry, C., Herborn, C. U., Maier, H. R., Ragoß, C., et al. (2006). Prototype of a silicon nitride ceramic-based miniplate osteofixation system for the midface. *Otolaryngology—Head and Neck Surgery*, 134(6), 923–930.
- Olofsson, J., Grehk, T. M., Berling, T., Persson, C., Jacobson, S., & Engqvist, H. (2012). Evaluation of silicon nitride as a wear resistant and resorbable alternative for total hip joint replacement. *Biomatter*, 2(2), 94–102.
- Patnaik, A., Satapathy, A., Mahapatra, S. S., & Dash, R. R. (2009). Tribop-performance of polyester hybrid composites: Damage assessment and parameter optimization using Taguchi design. *Materials & Design*, 30(1), 57–67.
- Rakhorst, G., & Ploeg, R. J. (2008). *Biomaterials in modern medicine: The groningen perspective*. World Scientific Publishing Company.
- Rambabu, G., Balaji Naik, D., Venkata Rao, C. H., Srinivasa Rao, K., & Madhusudan Reddy, G. (2015). Optimization of friction stir welding parameters for improved corrosion resistance of AA2219 aluminum alloy joints. *Defence Technology*, 11(4), 330–337.
- Rao Singiresu, S. (2009). *Engineering optimization: Theory and practice*. John Wiley & Sons Inc.
- Ross Philip, J. (2005). *Taguchi technique for quality engineering* (2nd ed.). Tata McGraw-Hill.
- Sait, S. M., Oughali, F. C., & Al-Asli, M. (2016). Design partitioning and layer assignment for 3D integrated circuits using tabu search and simulated annealing. *Journal of Applied Research and Technology*, 14(1), 67–76.
- Saito, T., Imada, Y., & Honda, F. (1999). Chemical influence on wear of Si<sub>3</sub>N<sub>4</sub> and hBN in water. *Wear*, 236(1), 153–158.
- Sculco, T. P. (1995). The economic impact of infected Joint Arthroplasty. *Orthopaedics*, 18(9), 871–873.
- Shah, F. U., Glavatskih, S., & Antzutkin, O. N. (2013). Boron in tribology: From borates to ionic liquids. *Tribology Letters*, 51(3), 281–301.